

Chess Puzzles

1201-1254

Mate in Two

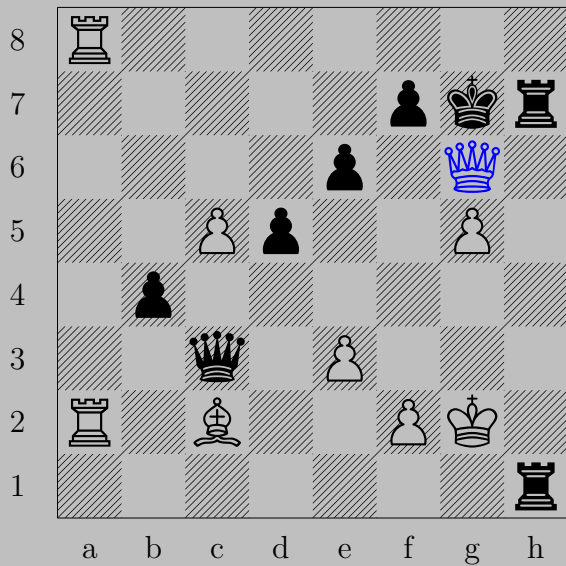
White to Move




László Polgár

Links

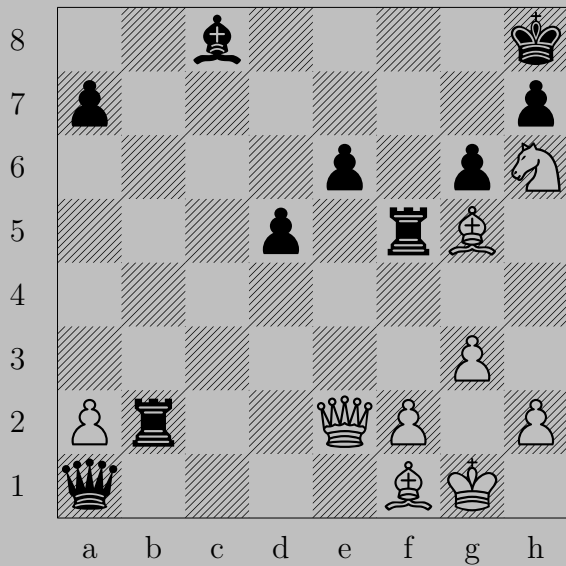
1201	1202	1203	1204	1205	1206	1207	1208	1209	1210
1211	1212	1213	1214	1215	1216	1217	1218	1219	1220
1221	1222	1223	1224	1225	1226	1227	1228	1229	1230
1231	1232	1233	1234	1235	1236	1237	1238	1239	1240
1241	1242	1243	1244	1245	1246	1247	1248	1249	1250
1251	1252	1253	1254						

1201

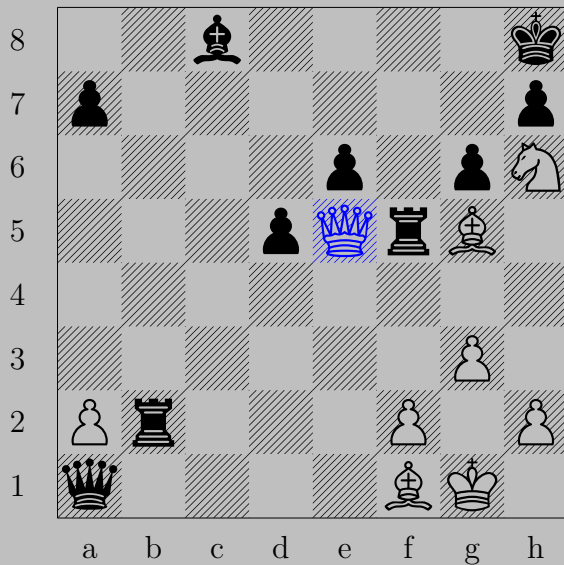


xg6+, xg6
(a2)a7

1202



1202



♚e5+

If ♜xe5, ♙f6. If ♜f6, ♚xf6.

1203

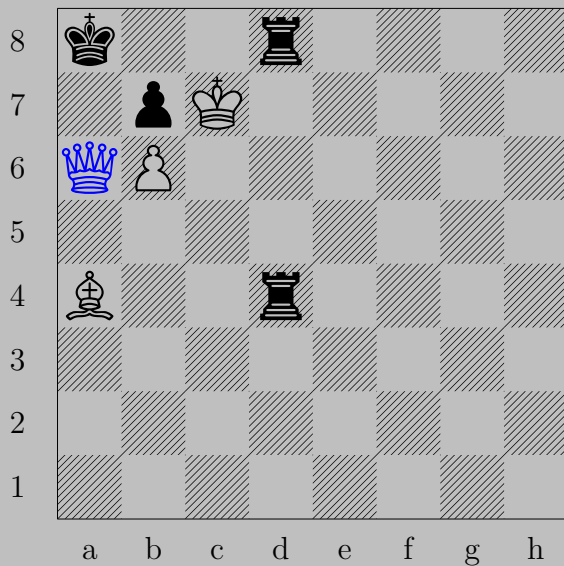


1203



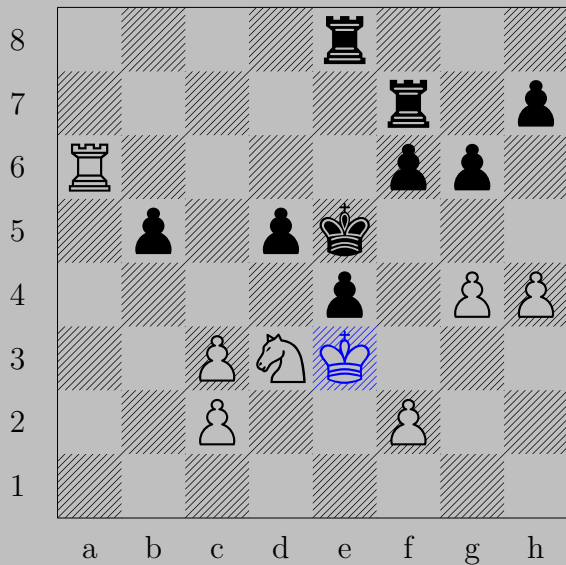
Rxf7+, Bxf7
Nf5

1204



♙×a6+, ♖×a6
♗c6

1205



♞d3+, ♠×d3

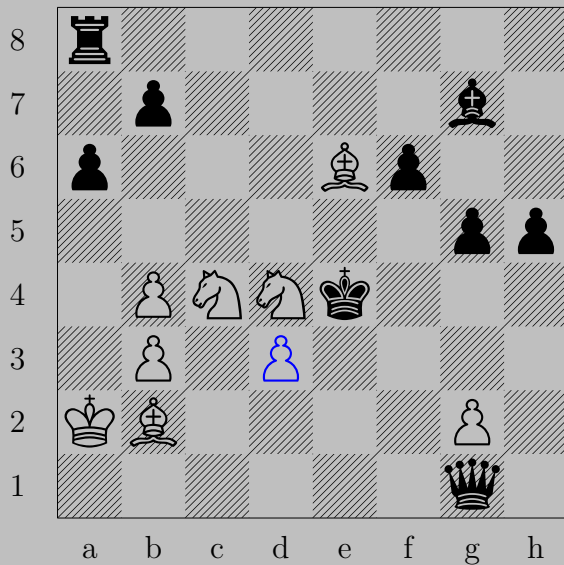
♠f4



♞e5+, ♞xe5 or ♔g6 or ♔f5

♔g5

1207



$\triangleleft d3+$

If $\text{♙} \times d3$, $\text{♜} f5$. If $\text{♙} f4$, $\text{♞} e2$.





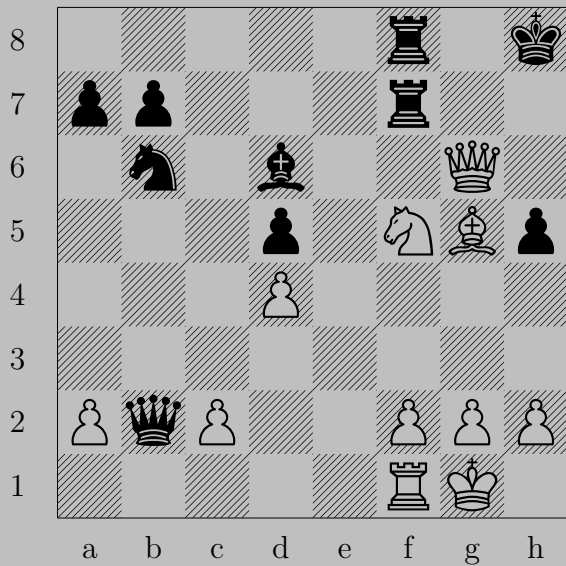
♔e5+, ♖xe5
♗(f4)xe5

1209



♔xa7+, ♖xa7
♘b5

1210

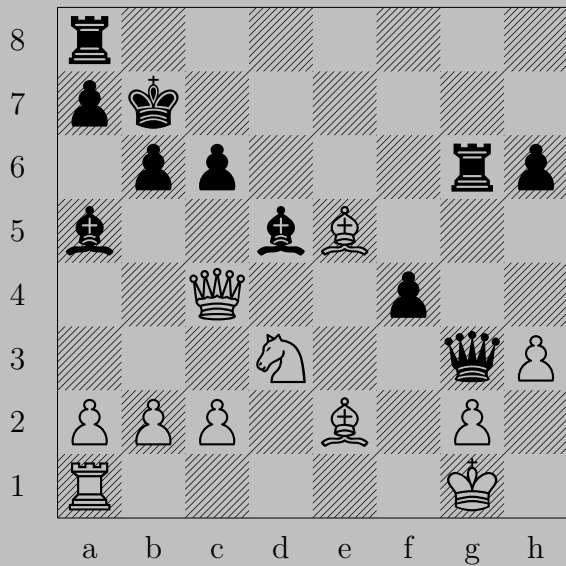


1210



$\text{♗f6+}, \text{♖x6}$
 ♕g7

1211

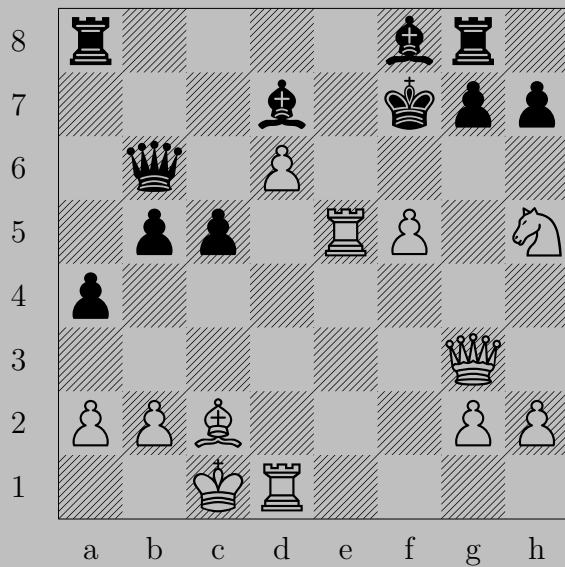


1211



♙a6+, ♚xa6
♞c5

1212

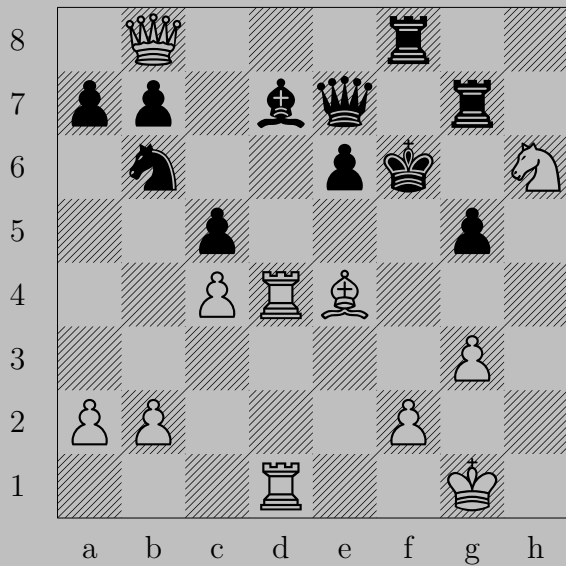


1212



♙g6+, ♖xg6
♗xg6

1213

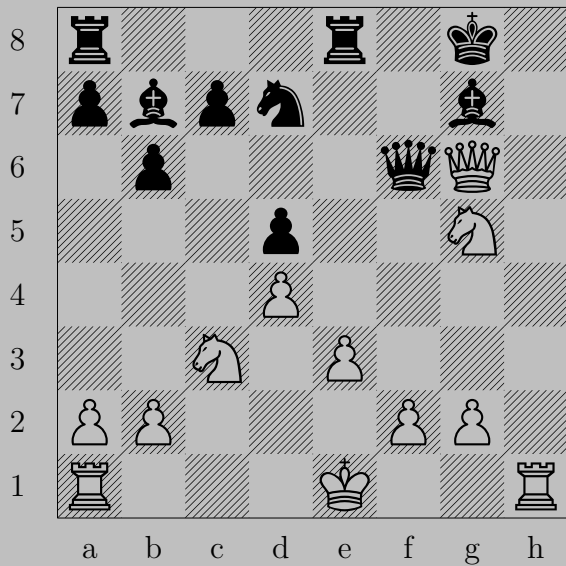


1213

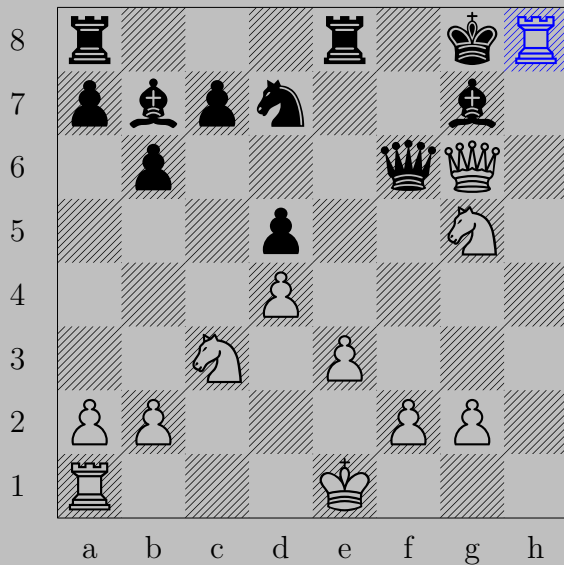


♙e5+, ♚xe5
♞g4

1214

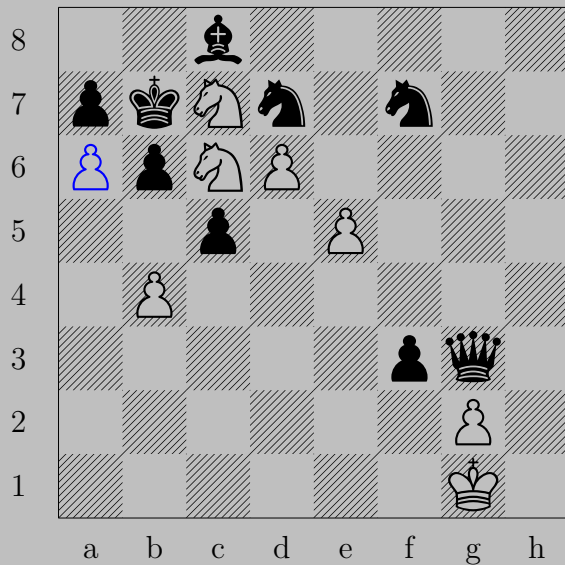


1214



Rh8+, Kh8
Kh7

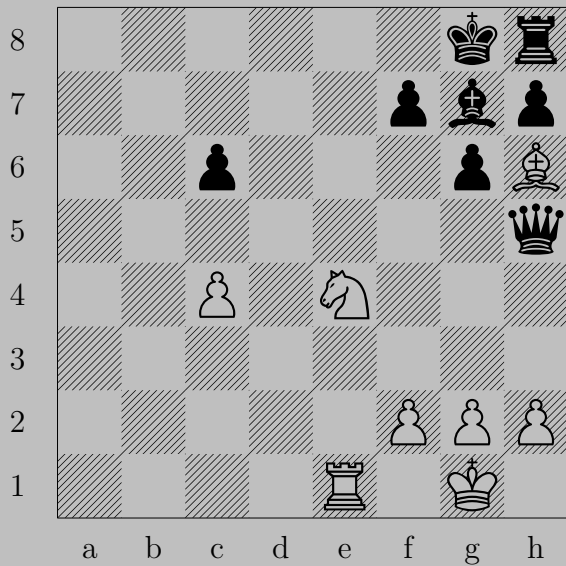
1215



♙d6+, ♔xc6

♙b5

1216

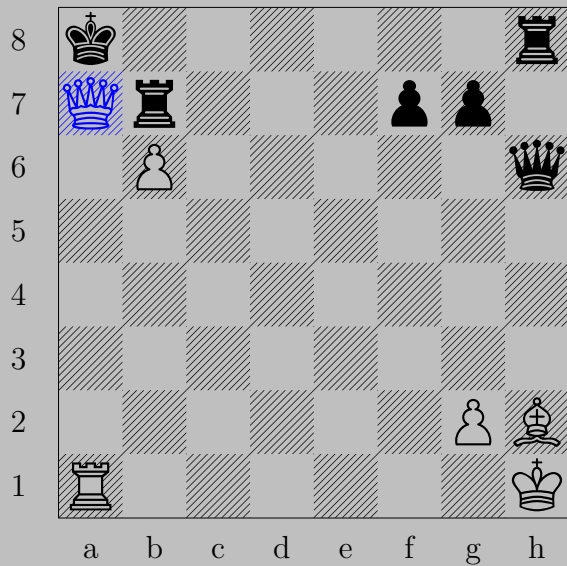


1216



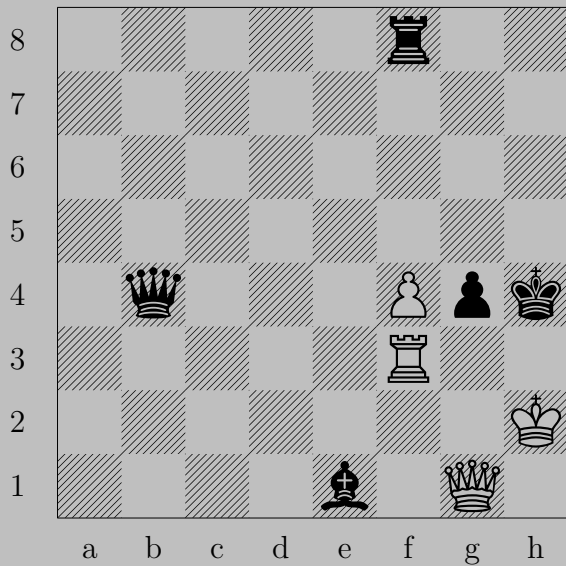
♞f6+, ♟x6 or ♚f8
♖e8

1217

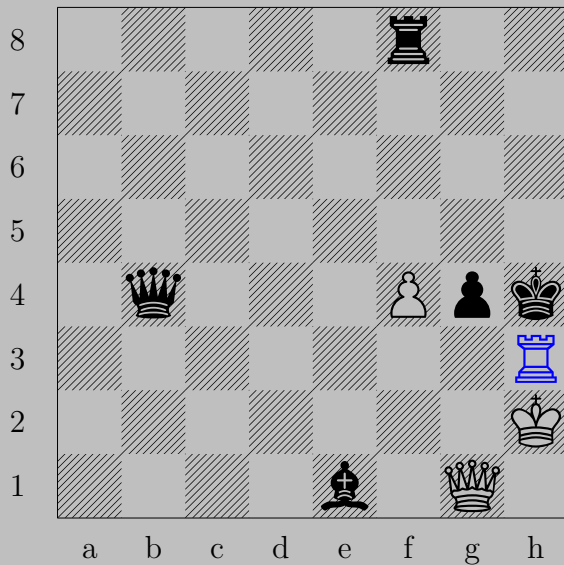


♔xa7+, ♖xa7
♖xa7

1218



1218



$\text{♖h3+}, \text{♔xh3}$

♕g5

1219



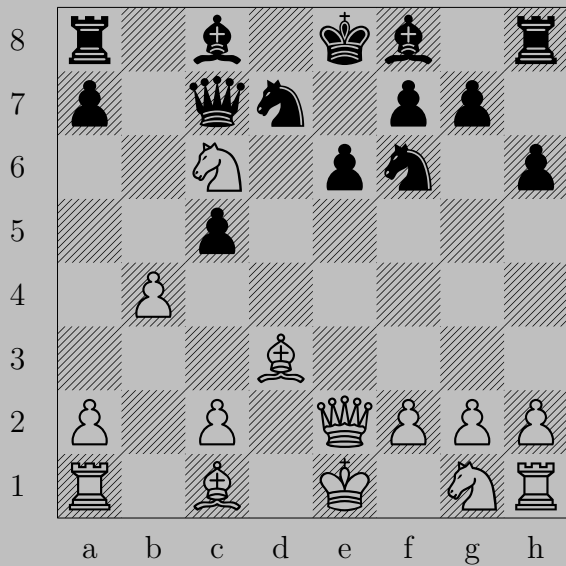
♞h4+, ♔xh4
♞f3

1220

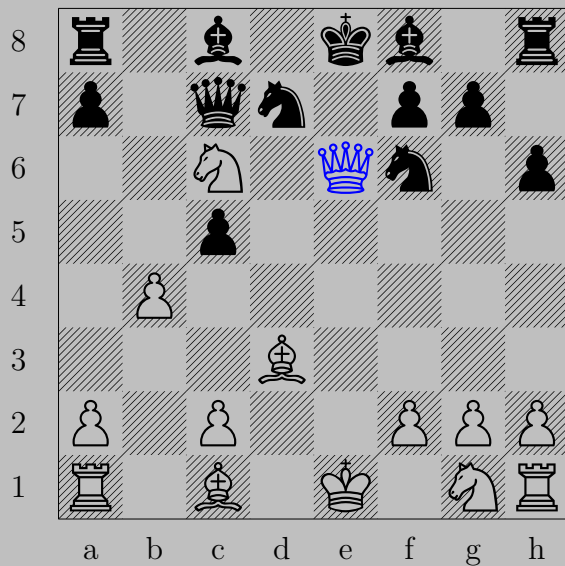


♙e6+, ♔xe6
♘g4

1221



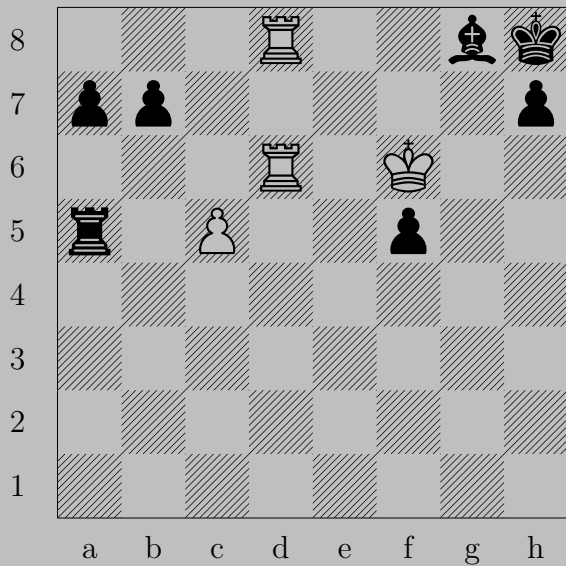
1221



xe6+

If xe6, g6. If e7, xe7.

1222

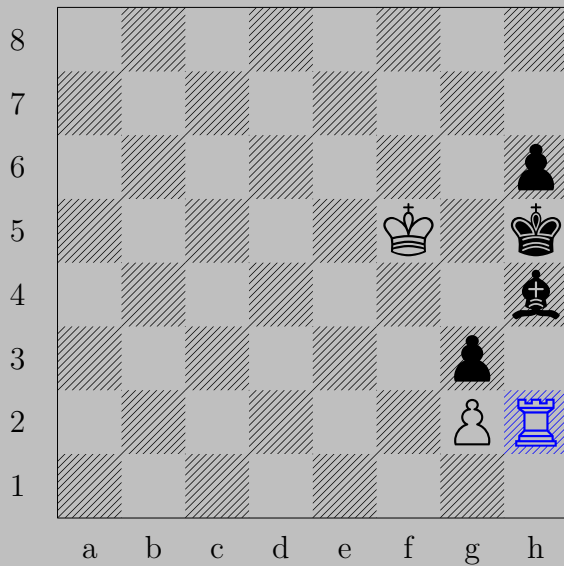


1222



Rxg8+, Kxg8
Rd8

1223



♖h2, ♙xh2

♙g4

1224

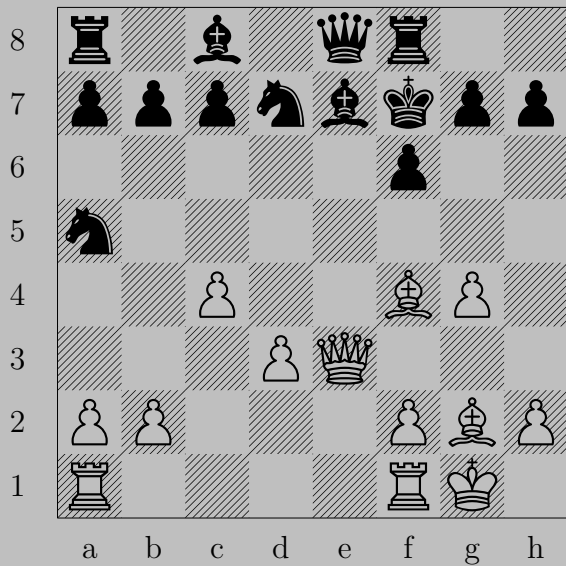


1224

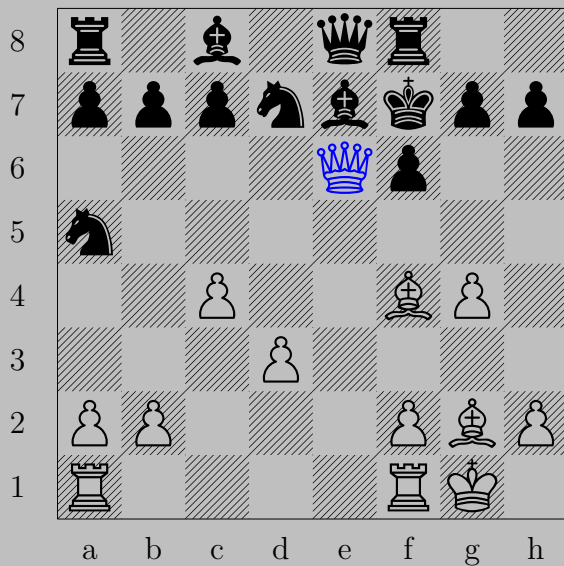


♖×h6+, ♙×h6
♞f7

1225

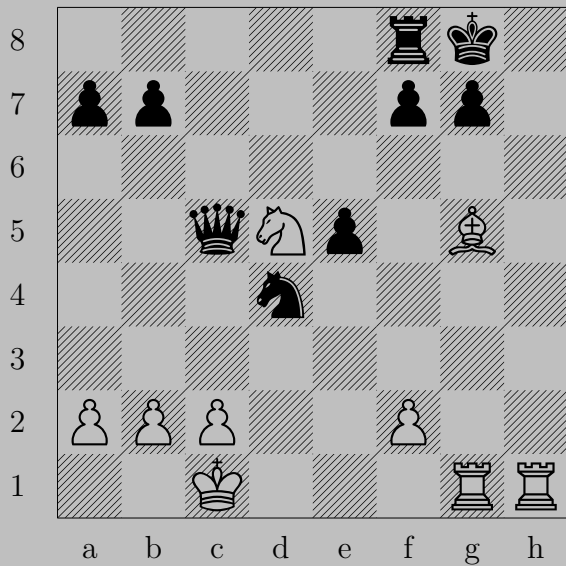


1225



♙e6+, ♚xe6
♜d5

1226

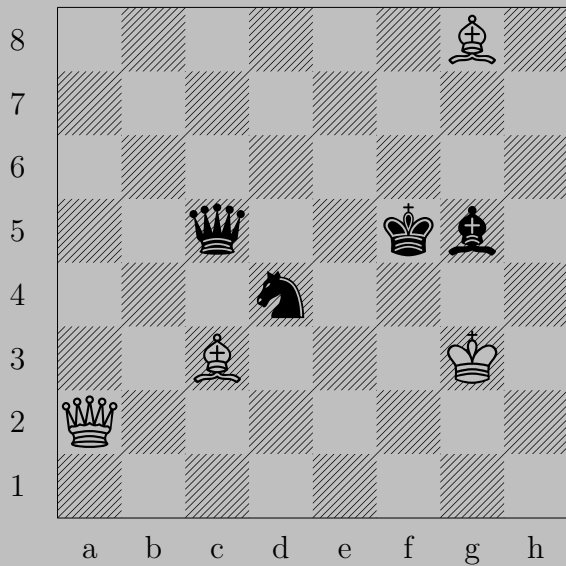


1226

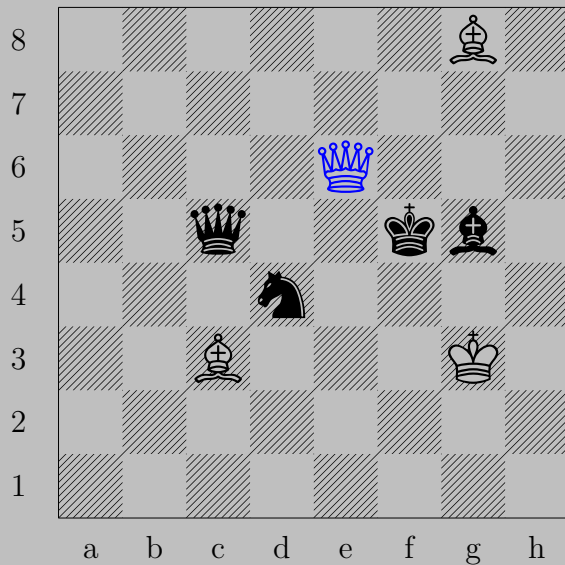


$\text{♞f6+}, \text{♙}\times\text{f6}$
 $\text{♜}\times\text{f6}$

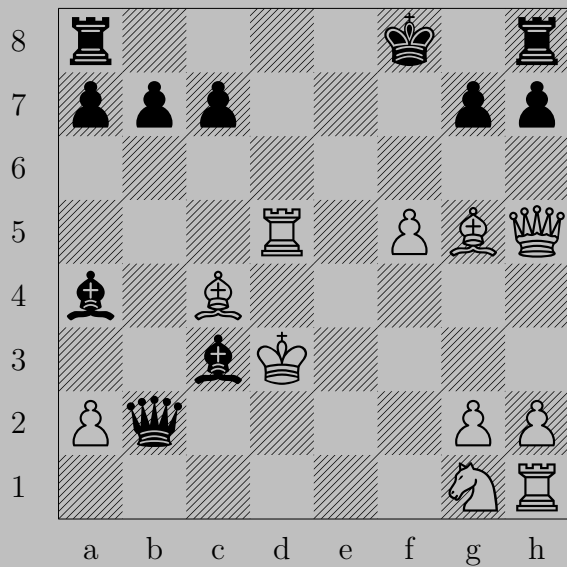
1227



1227



♚e6+, ♞x6
♙h7



1228



♙f7+, ♚xf7
♖d8

1229

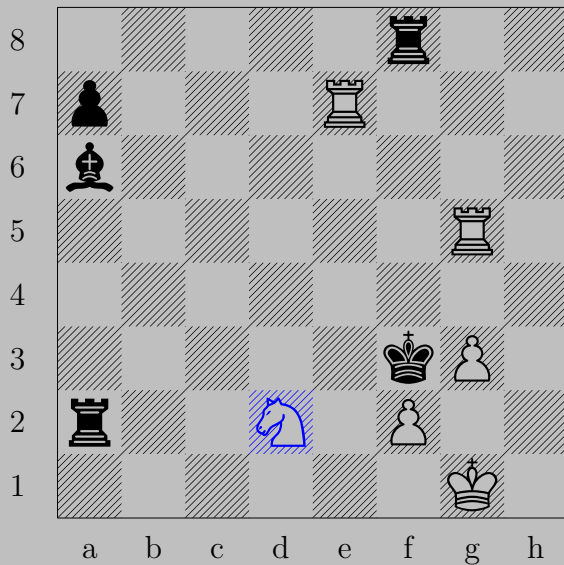


1229



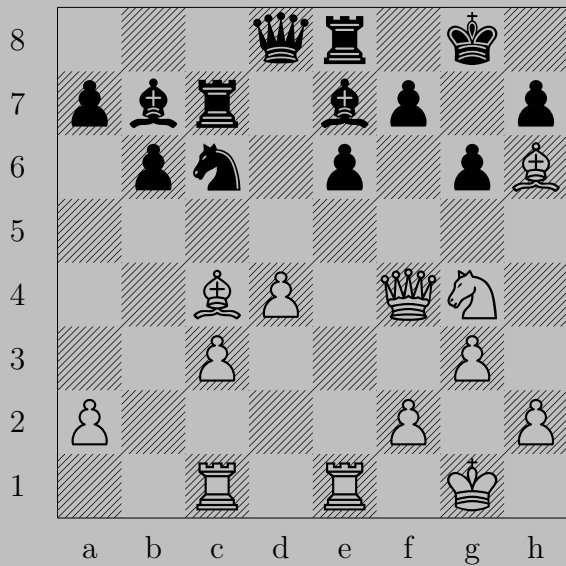
♚g6+, ♔xg6
♝e4

1230

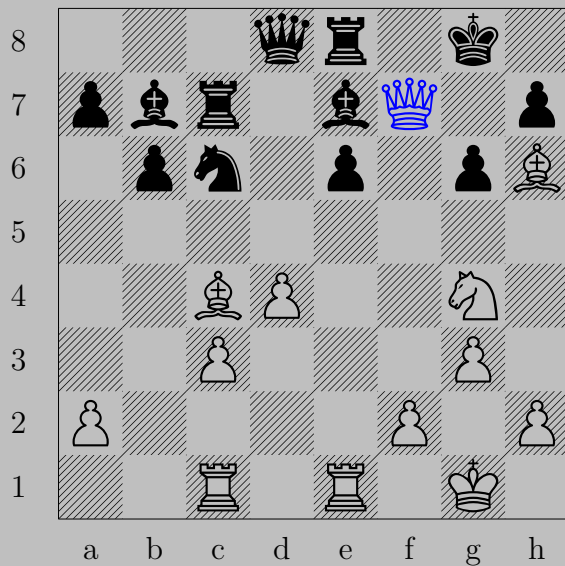


$\text{♞d2+}, \text{♖x d2}$
 ♖e3

1231



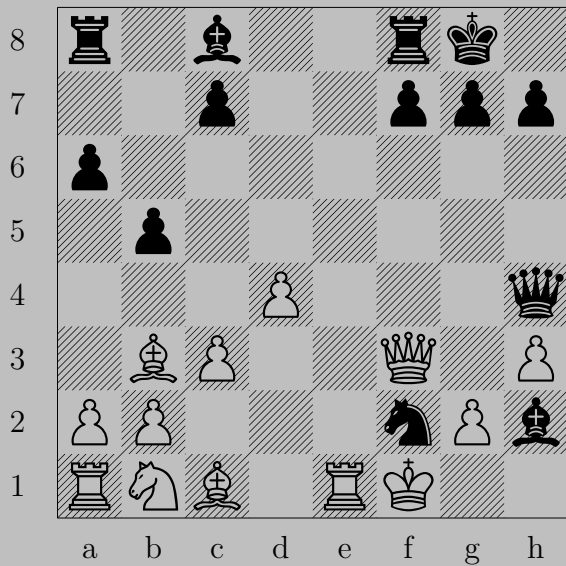
1231



♙×f7+

If ♔×f7, ♕×e6. If ♔h8, ♙g7.

1232



1232



$\text{♙} \times f7+$

If $\text{♜} \times f7$, $\text{♖} e8$. If $\text{♚} h8$, $\text{♙} \times f8$.

1233



♙f4+, ♚x4
♞g6

1234

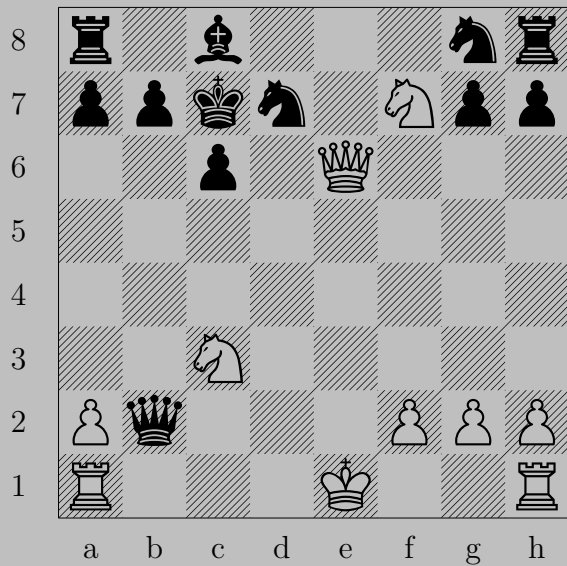


1234

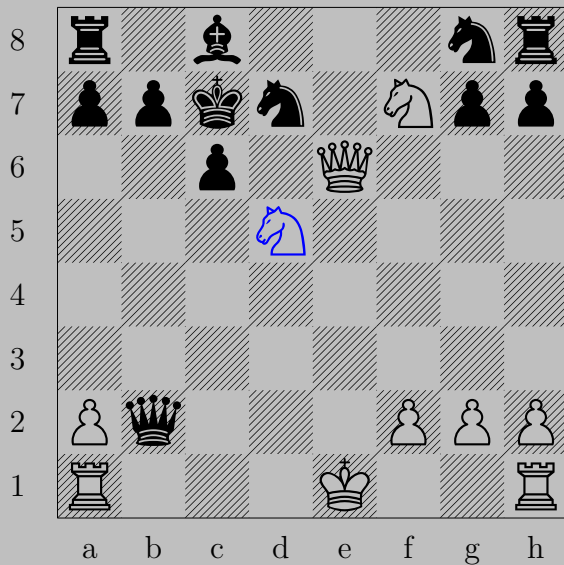


♚xf7+, ♞xf7
♞g6

1235

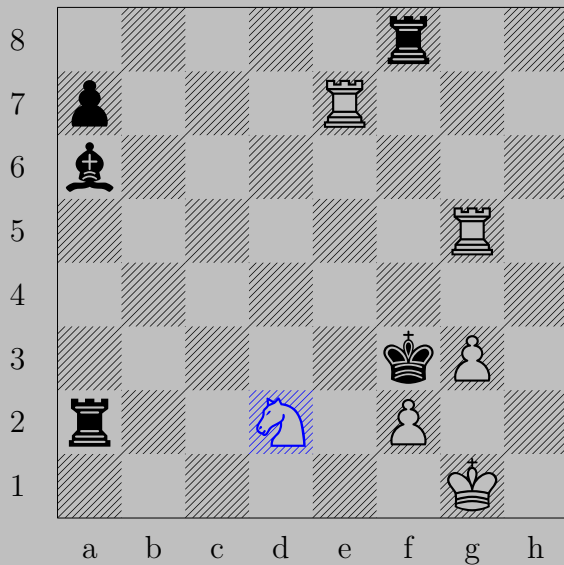


1235



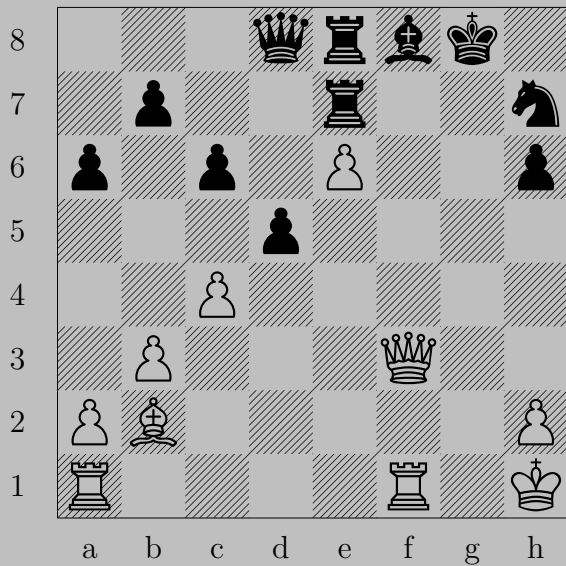
♞d5+ , ♟x d5 or ♔b8
 ♚d6

1236



$\text{♞d2+}, \text{♖x d2}$
 ♖e3

1237



1237



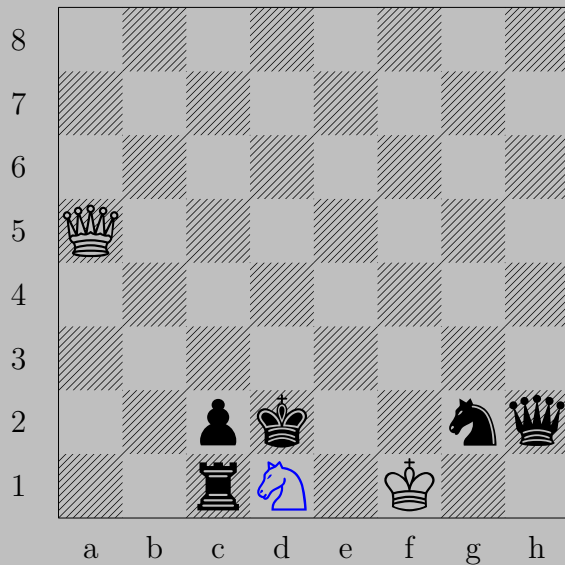
♙f7+, ♖xf7

♙xf7

1238

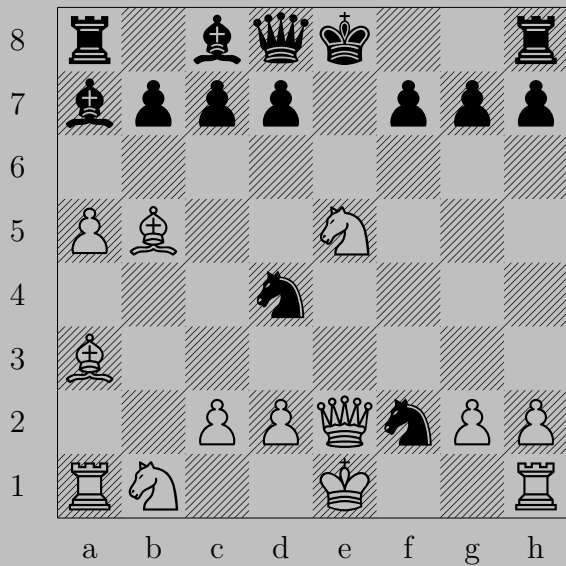


1238

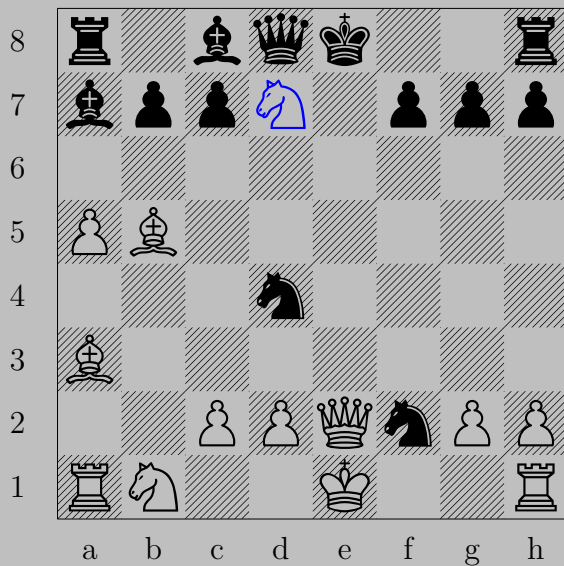


♞d1+ , $\text{♔}\times\text{d1}$ or ♔d3
 ♔d5

1239



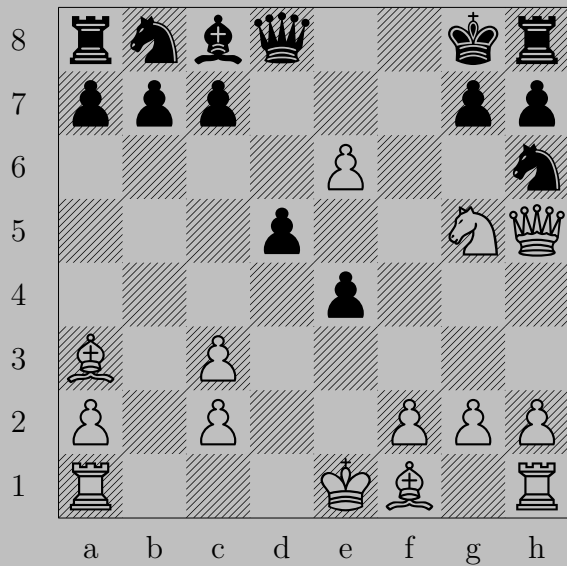
1239



Nxd7+

If Nxe2 or Ne4 or Ne6 , Nf6 . If Qe7 , Qxe7 .

1240

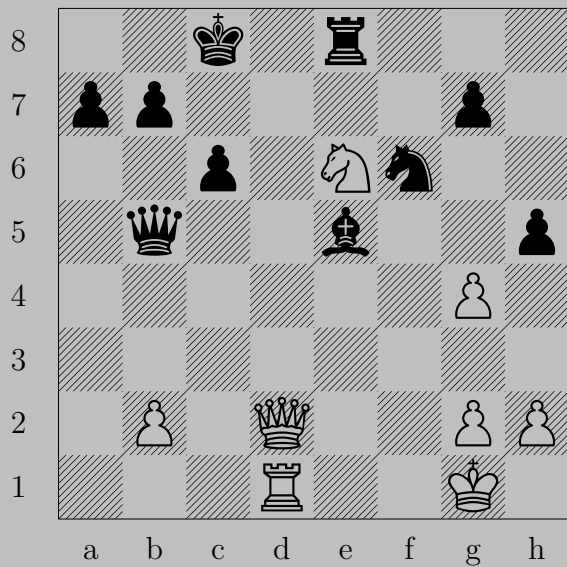


1240

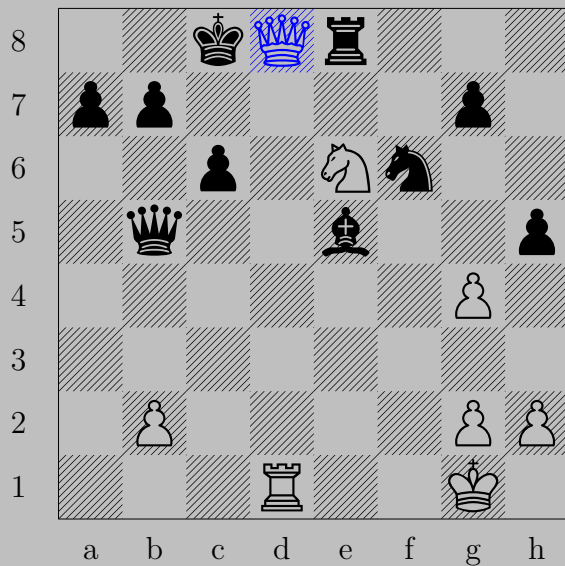


♙f7+, ♘xg7
♙xg7

1241

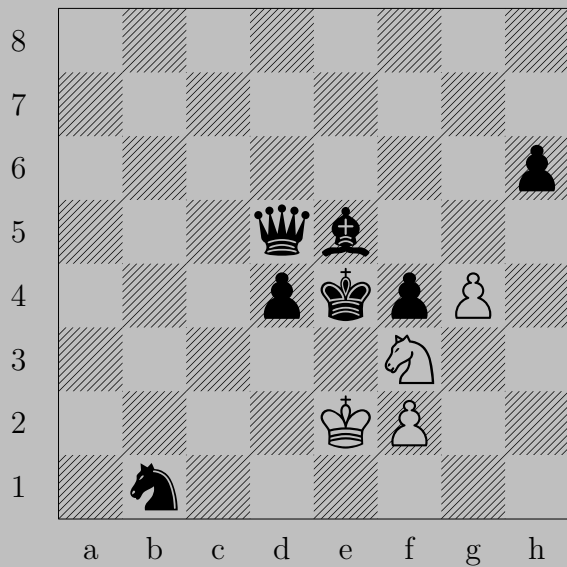


1241

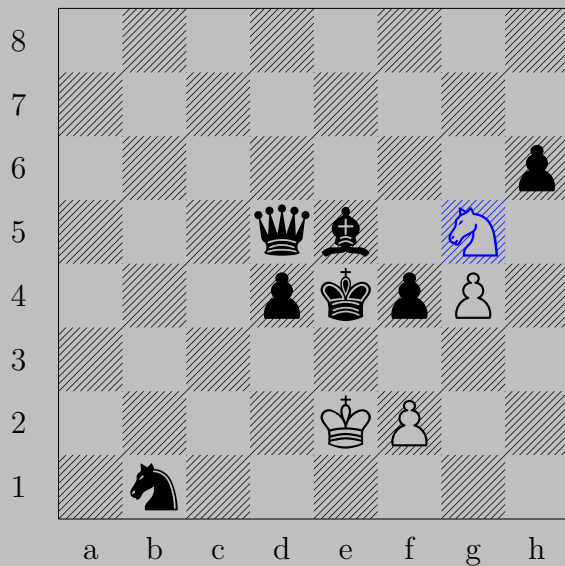


♚d8+, ♖x8
♖x8

1242

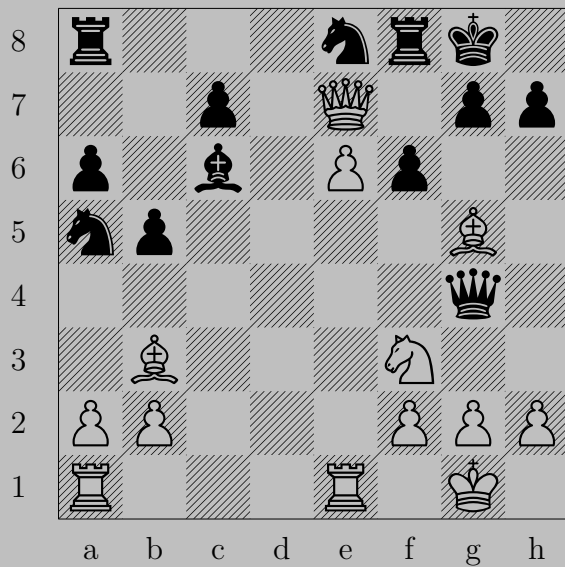


1242

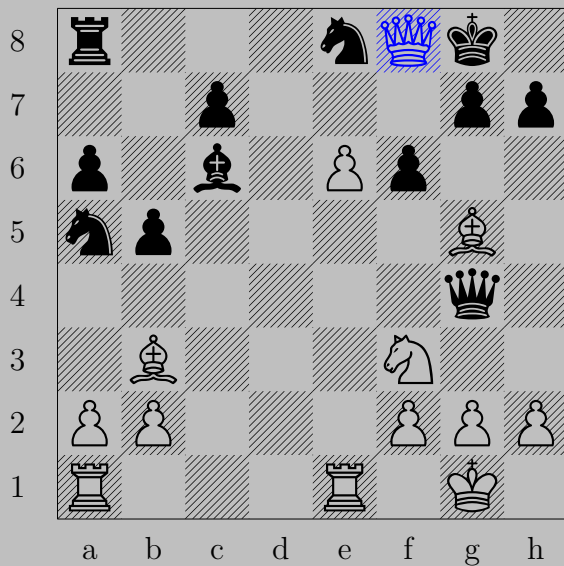


$\text{Ng5+}, \text{Pxg5}$
 Pf3

1243

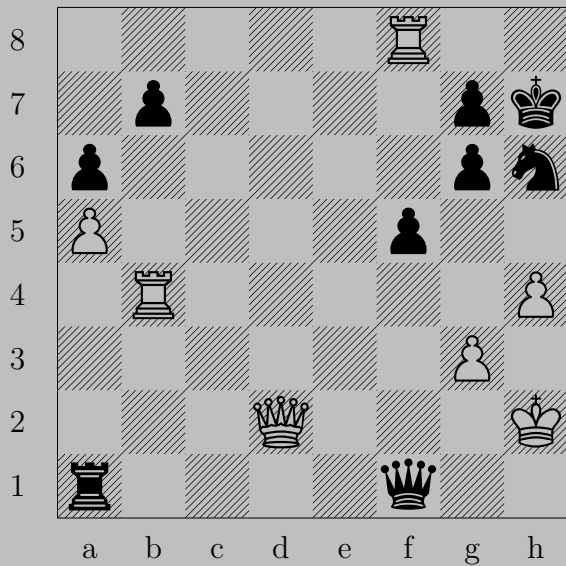


1243

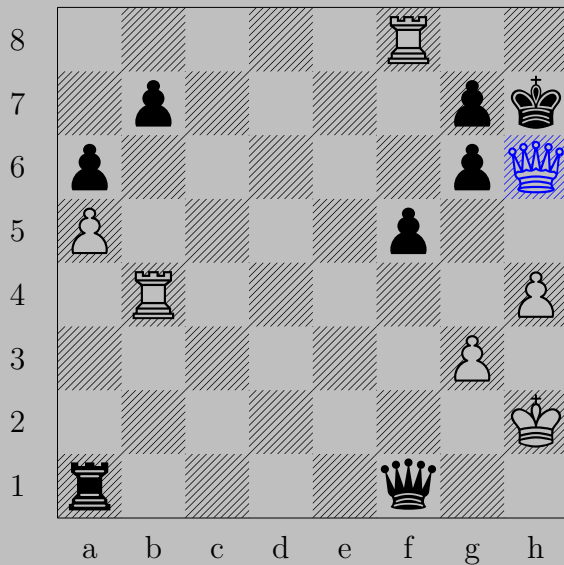


♔xg8+, ♕xg8
♖e7

1244



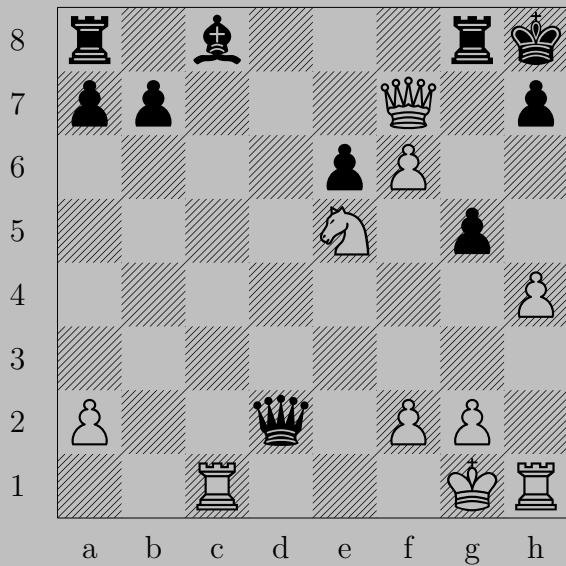
1244



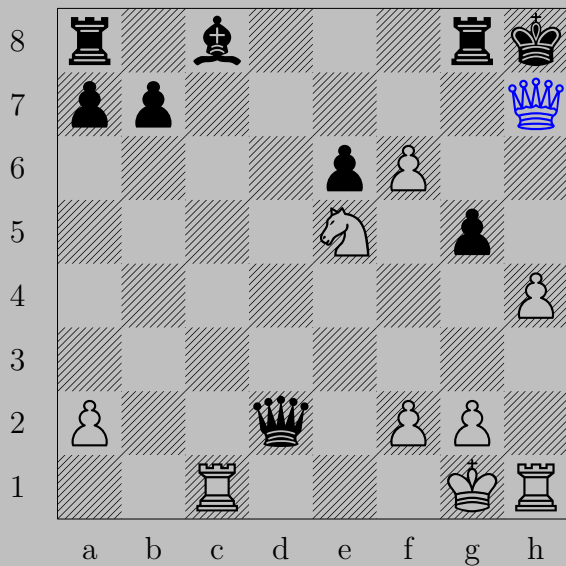
♙×h6+

If ♖×h6, ♜×b7. If ♙×h6, ♜h8.

1245



1245



♙xh7+, ♚xh7
♜xg5

1246



1246



♙×f6+

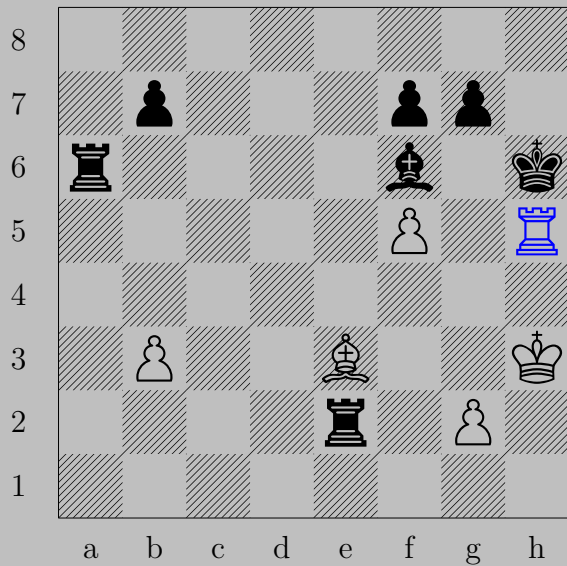
If ♚×f6, ♘d4. If ♚h7, ♖×h8

1247



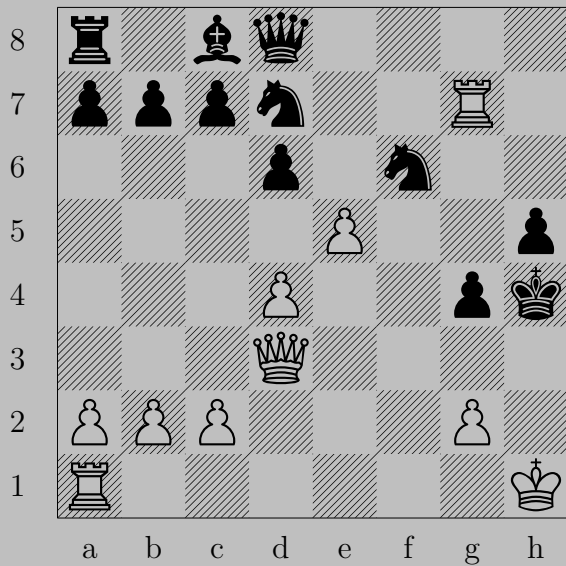
$\text{♙} \times e6+, \text{♚} \times e6$
 $\text{♞} \times h7$

1248



R×h5+, K×h5
Pg4

1249



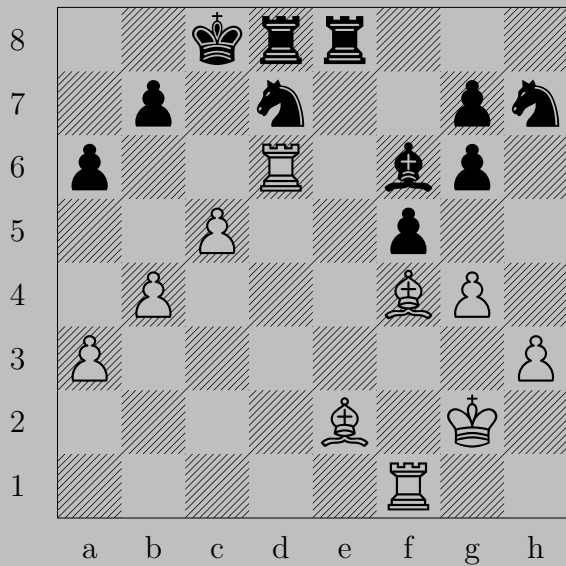
1249



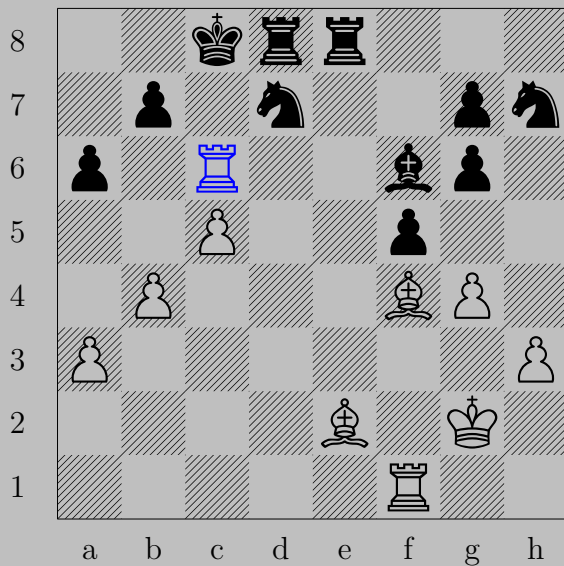
♙h3+, ♜xh3

♜g3

1250



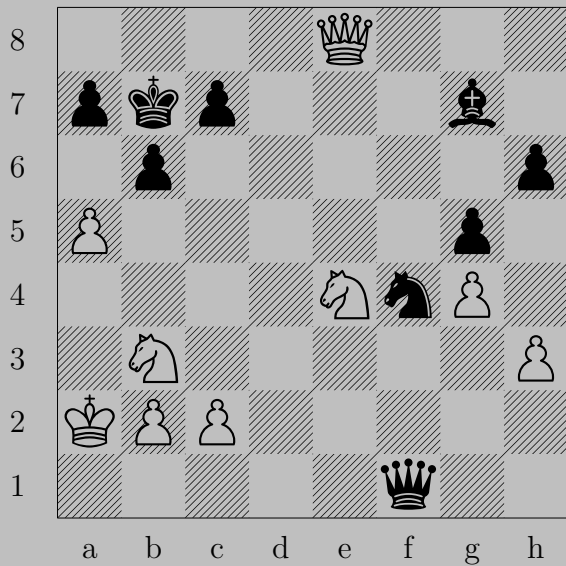
1250



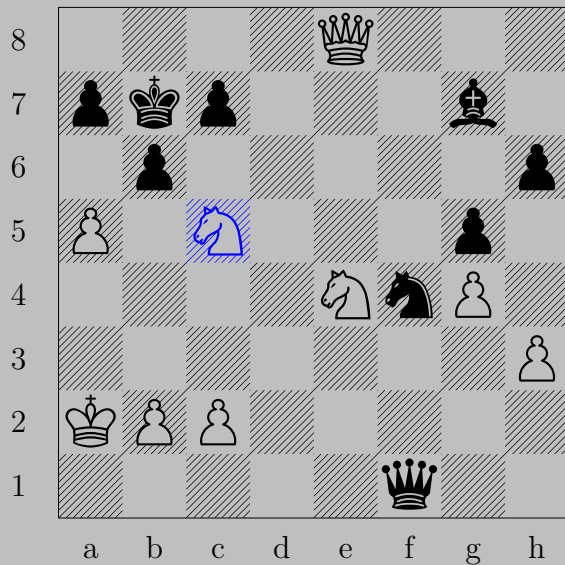
♖c6+, ♙xc6

♙xa6

1251



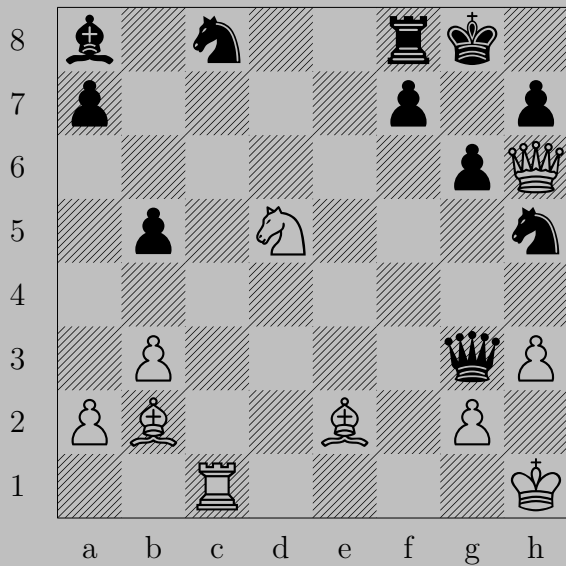
1251



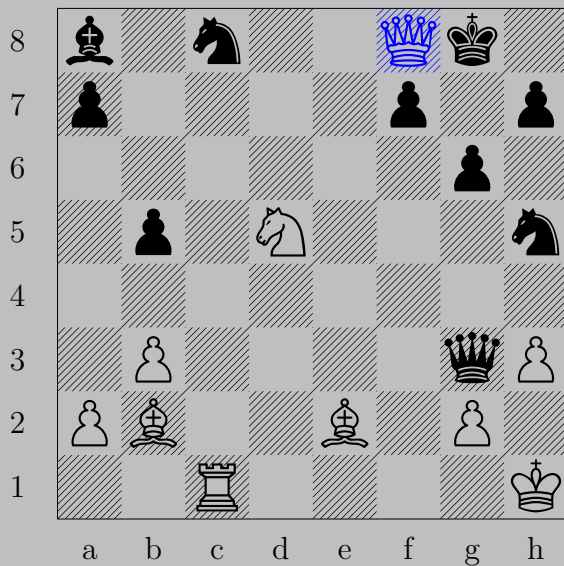
♞c5+, ♙xc5

♞xc5

1252



1252



♚×f8+, ♔×f8
♖×c8

1253

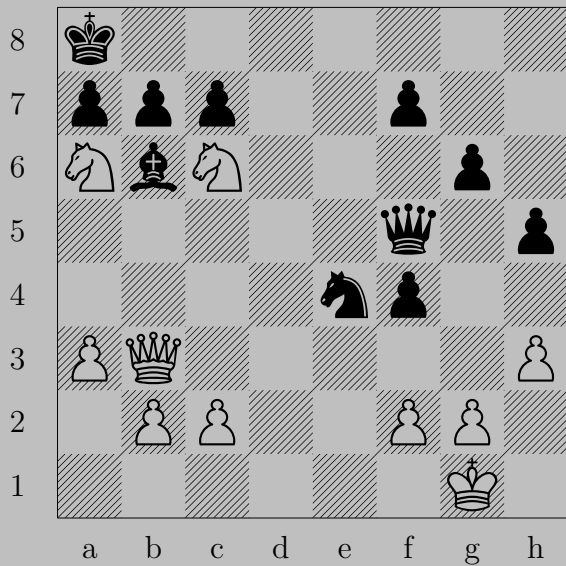


$\text{R}a8$

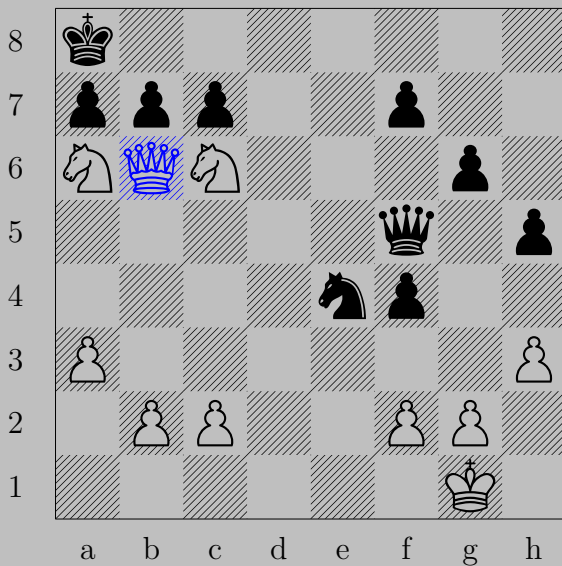
If $\text{R}xh4$ or $\text{N}c6$ or $\text{N}d5$ or $\text{B}d5$ or $\text{B}g5$, $\text{R}xe8$.

Otherwise, $\text{Q}e7$.

1254



1254



♚×b6

If ♙×b6 or ♚c5, ♞c7. If ♙×c6, ♚b8.

Otherwise, ♚×a7.