

Chess Puzzles

1255-1300

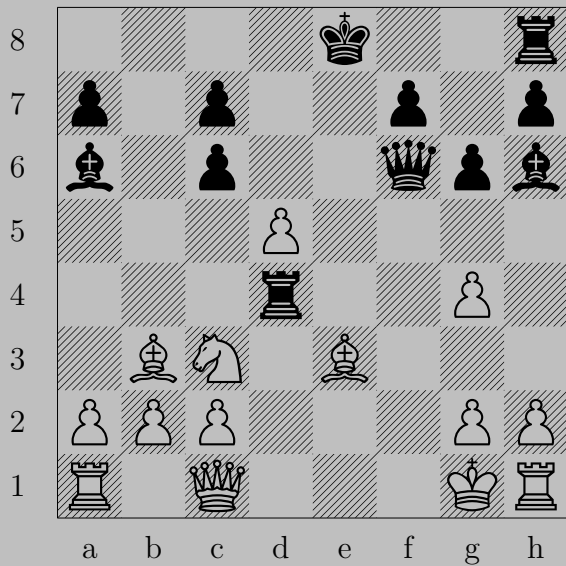
Mate in Two
Black to Move

László Polgár

Links

				1255	1256	1257	1258	1259	1260
1261	1262	1263	1264	1265	1266	1267	1268	1269	1270
1271	1272	1273	1274	1275	1276	1277	1278	1279	1280
1281	1282	1283	1284	1285	1286	1287	1288	1289	1290
1291	1292	1293	1294	1295	1296	1297	1298	1299	1300

1255



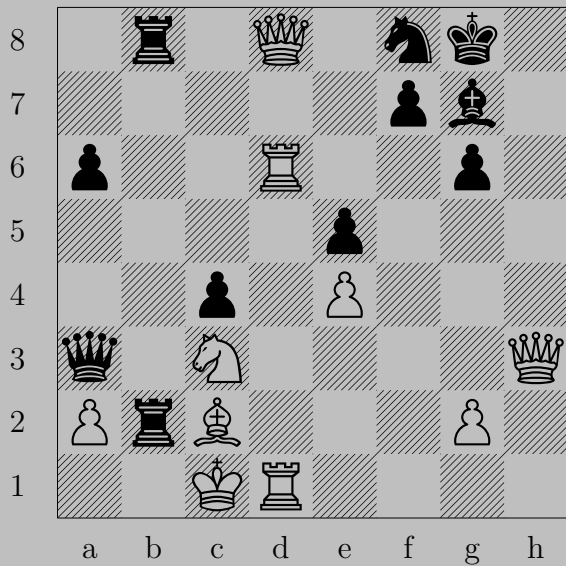
1255



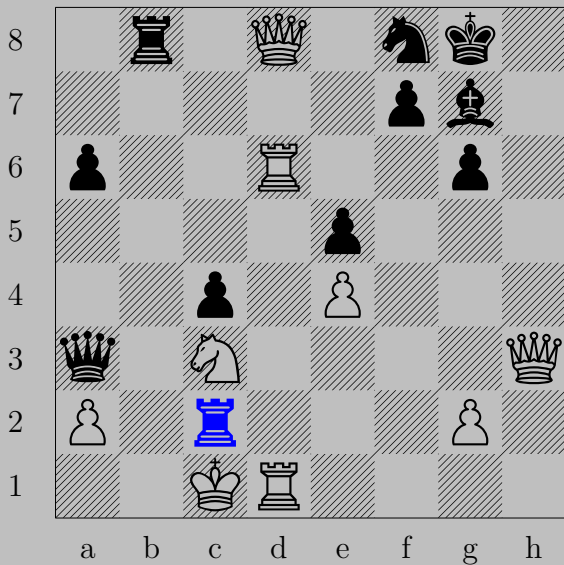
- ♖d1+

If ♚×d1, ♙×e3. If ♞×d1, ♚f1.

1256

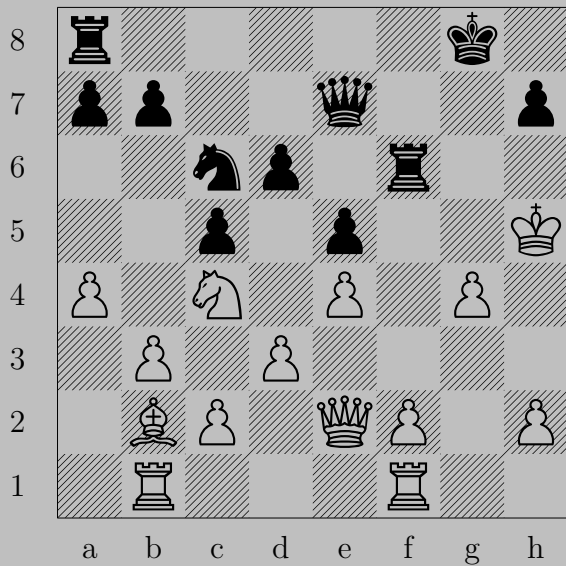


1256

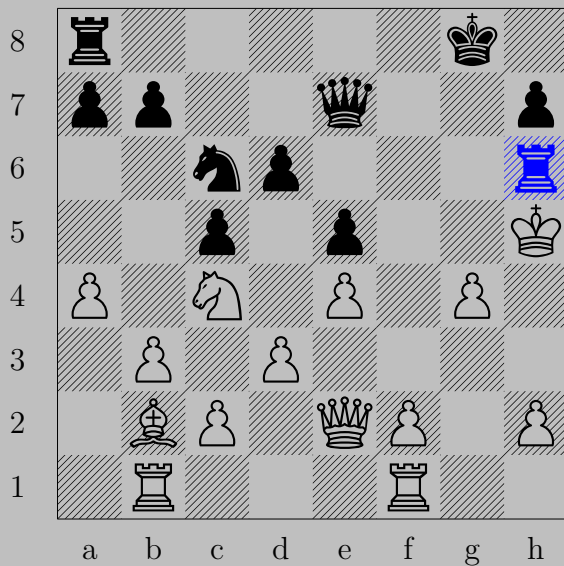


- ♖xc2+
♔xc2, ♚b2

1257



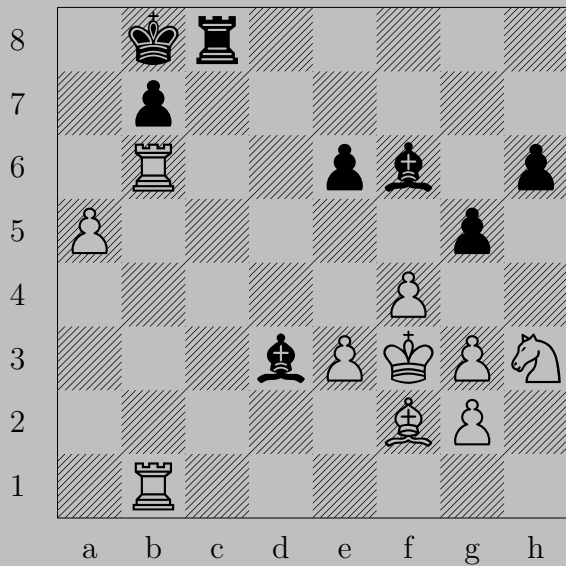
1257



- ♖h6+

♔xh6, ♚h4

1258



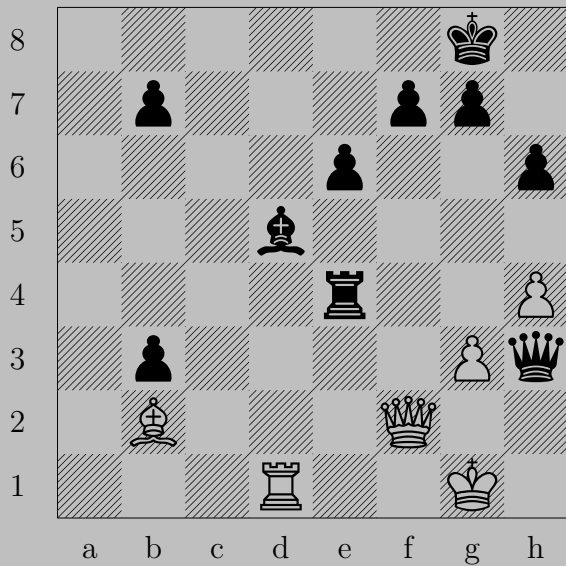
1258



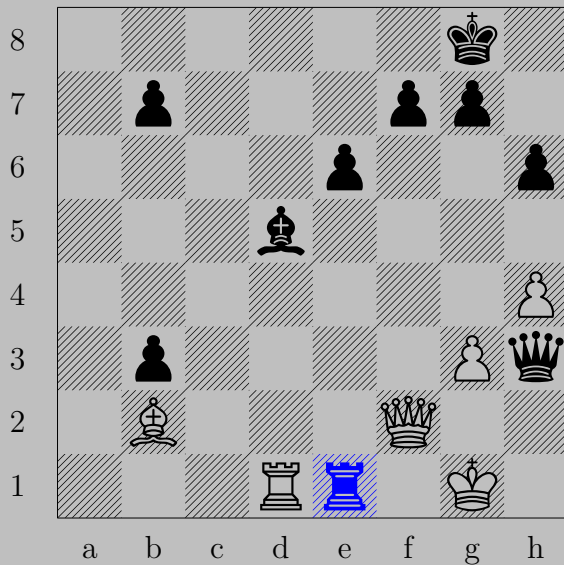
- ♖g4+

♔xg4, ♙e2

1259



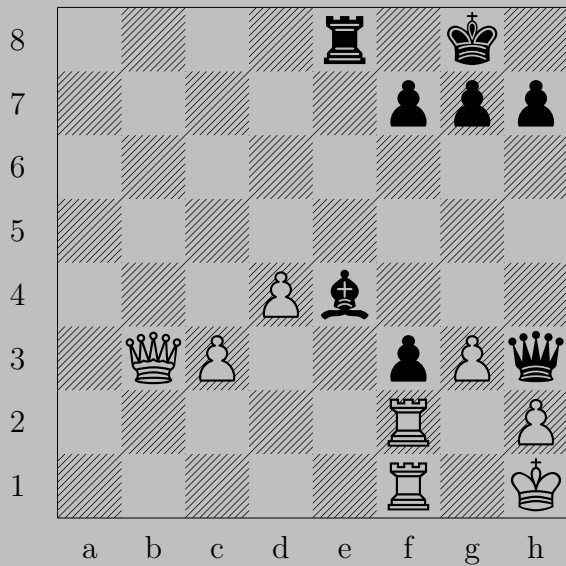
1259



- ♖e1+

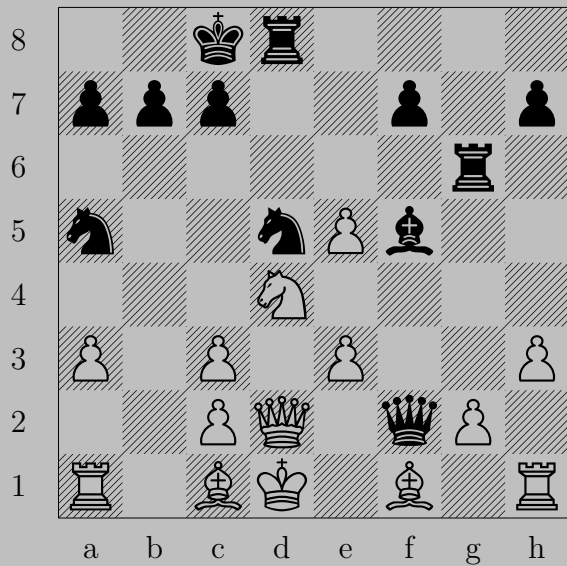
If ♖xe1, ♔h1. If ♔xe1, ♔g2.

1260





– ♔×f1+
 ♖×f1, ♘f2

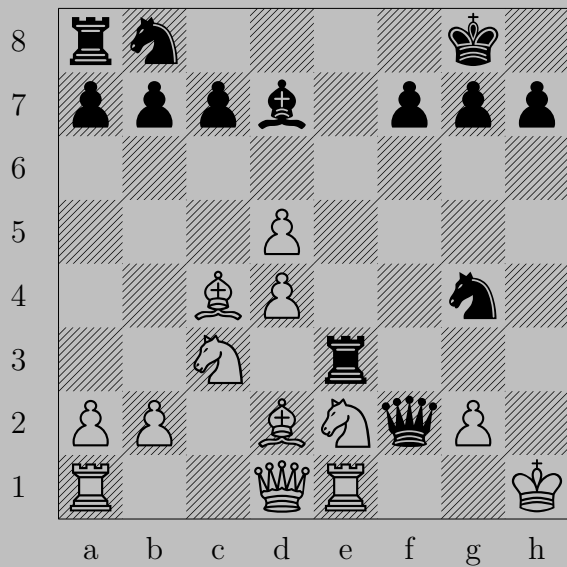


1261

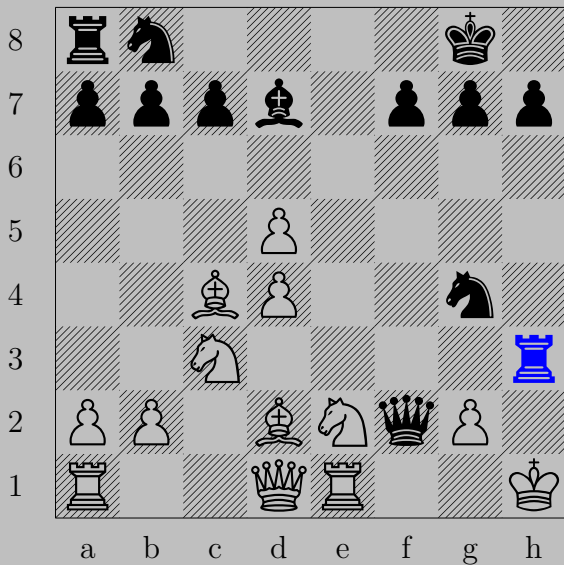


- ♞xe3+

♔xe3, ♙xc2



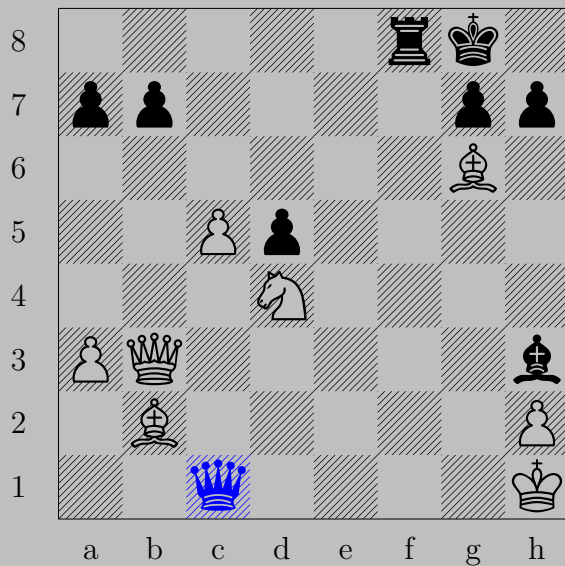
1262



- ♖h3+

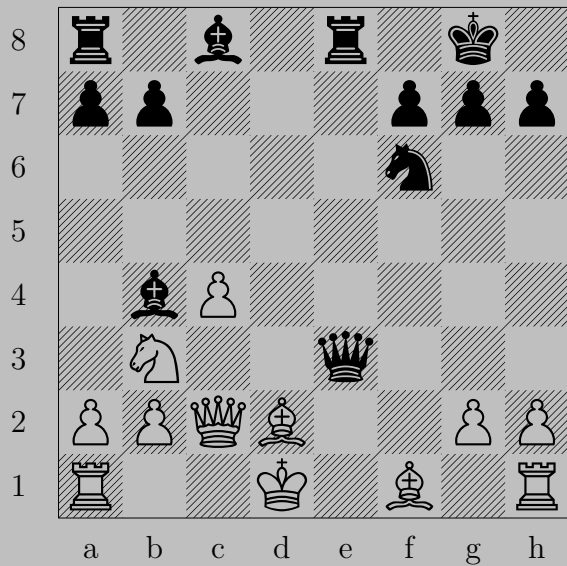
♙xh3, ♔h2



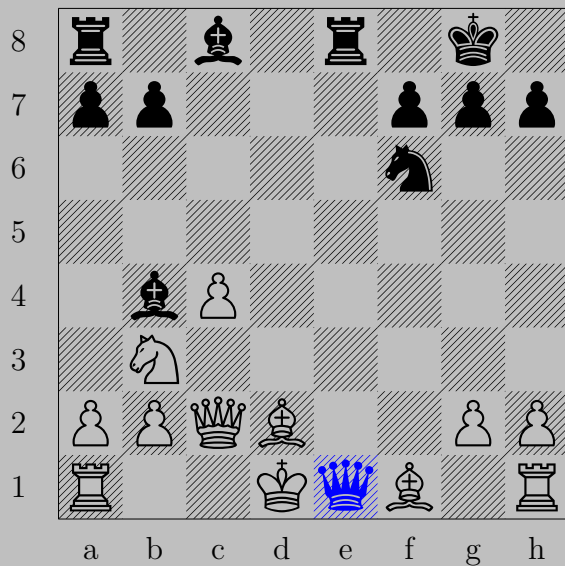


- ♔xc1+

If ♘xc1, ♖f1. If ♔d1, ♔xd1.



1264



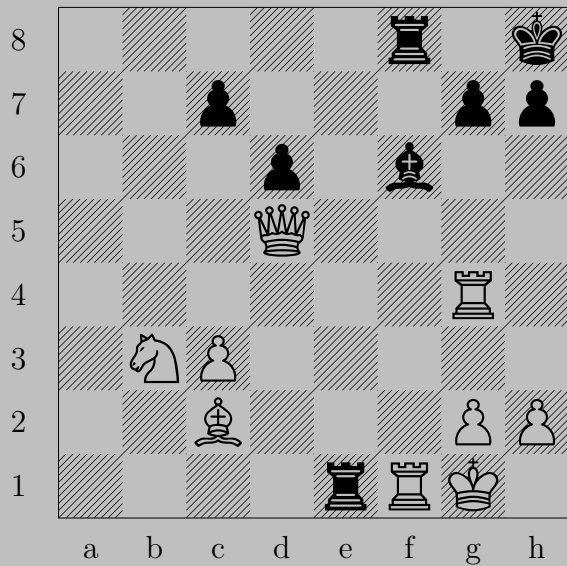
- ♔e1+
♘xe1, ♖xe1

1265



- ♘h3+

♔xh3, ♜f4





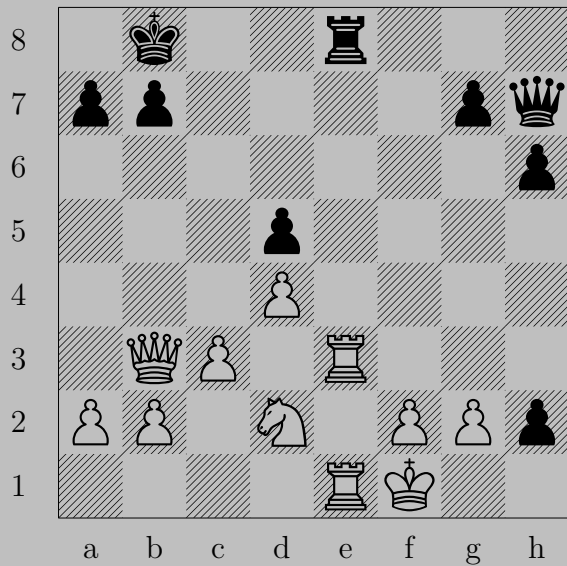
- ♖d4+

♔xd4 or ♙xd4 or ♞xd4 or ♜xd4 or ♚h1, ♞xf1

1267



- ♔xg1+
♔xg1, ♖d1

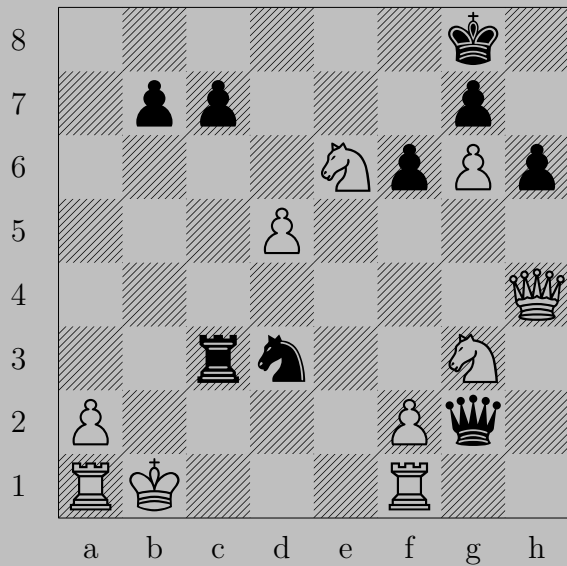


1268



- ♔d3+

♖xd3 or ♖e2, ♘h1(♔)



1269



- ♚xf1+
♞xf1, ♖c1

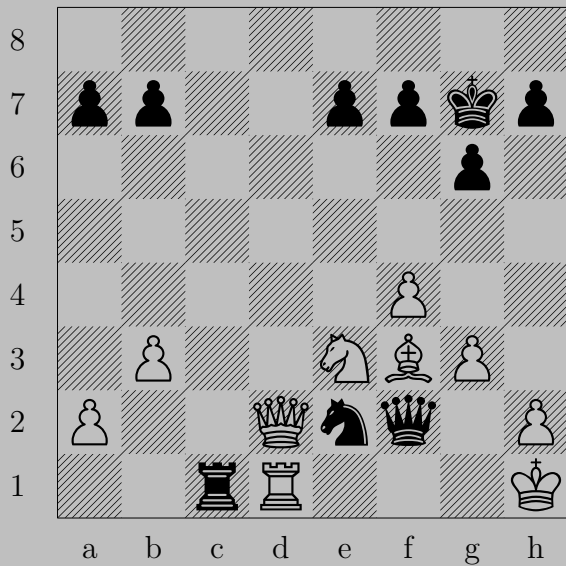
1270



- ♔f1+

If ♘xf1, ♖xh2. If ♔g1, ♔xg1.

1271

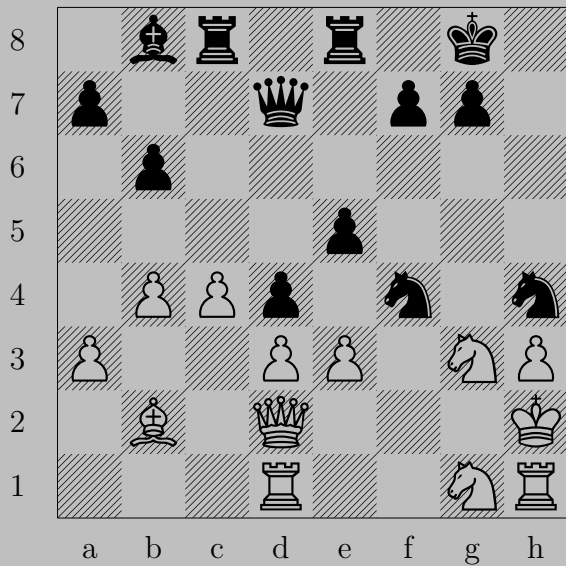


1271

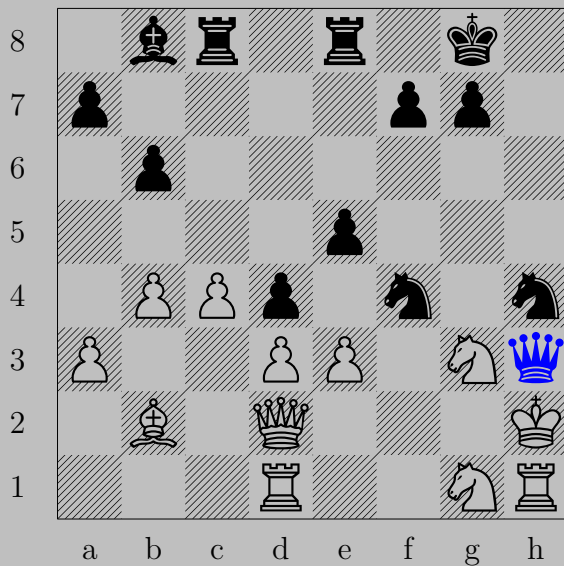


- ♔g1+
♜xg1, ♞xg1

1272

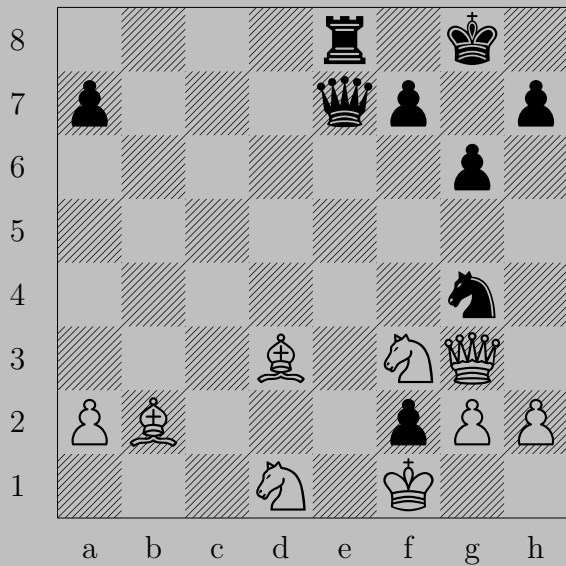


1272

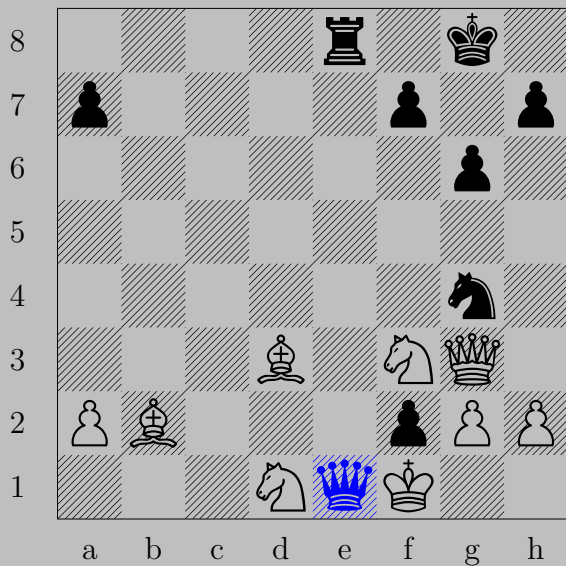


- ♚xh3+
♞xh3, ♞f3

1273



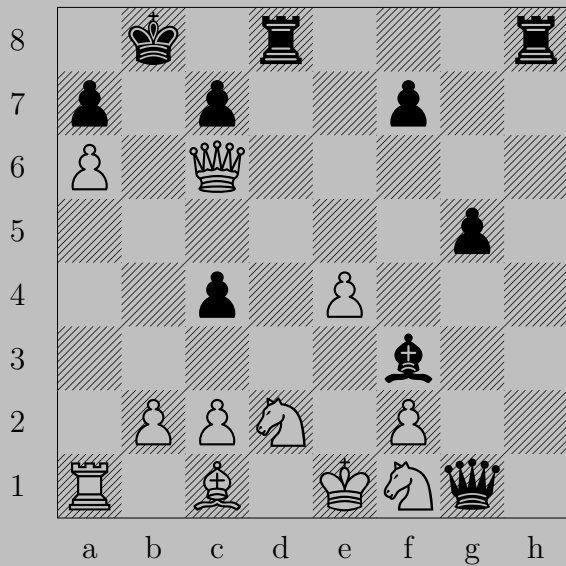
1273



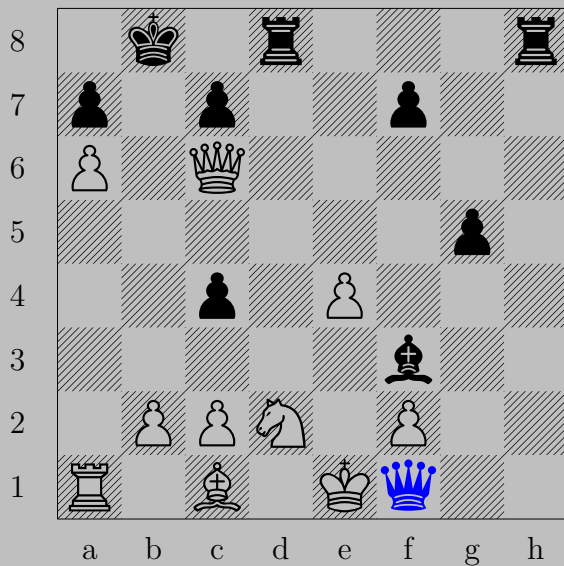
- ♔e1+

♘xe1, ♖xe1

1274



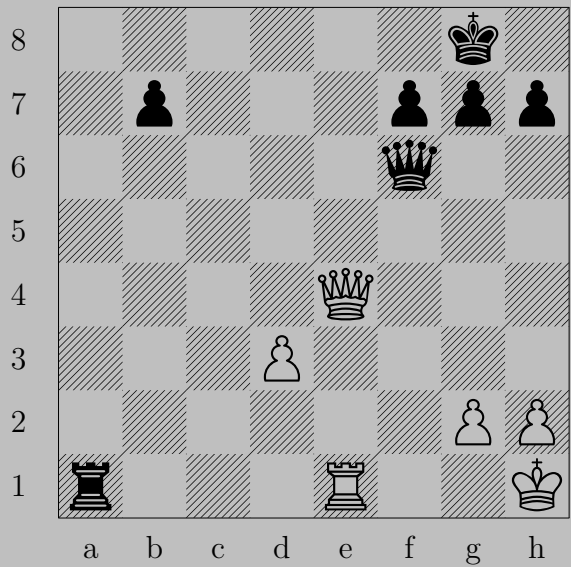
1274



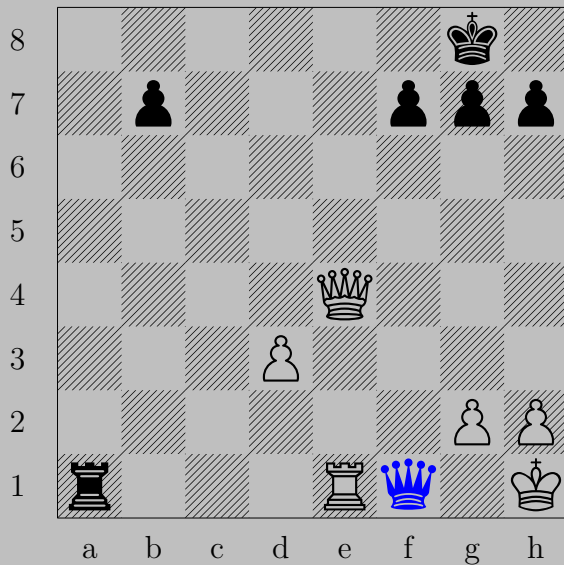
- ♔xf1+

If ♘xf1, ♖d1. If ♔xf1, ♖h1.

1275

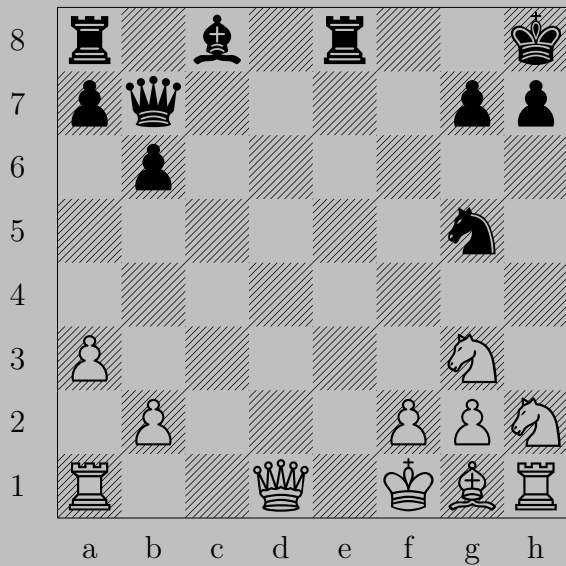


1275

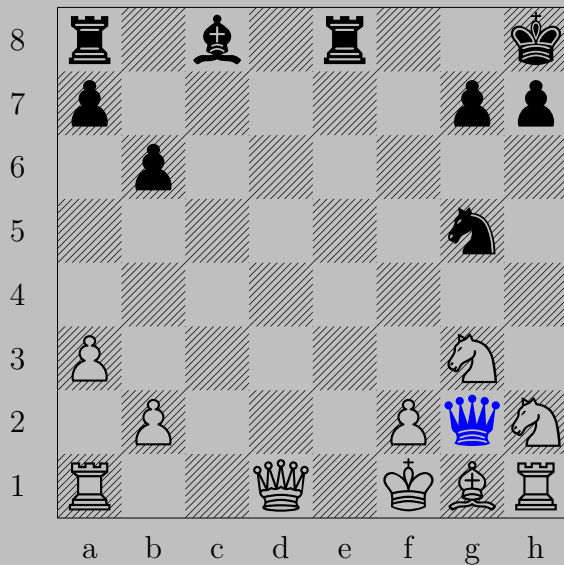


- ♔f1+
♖x1, ♗x1

1276

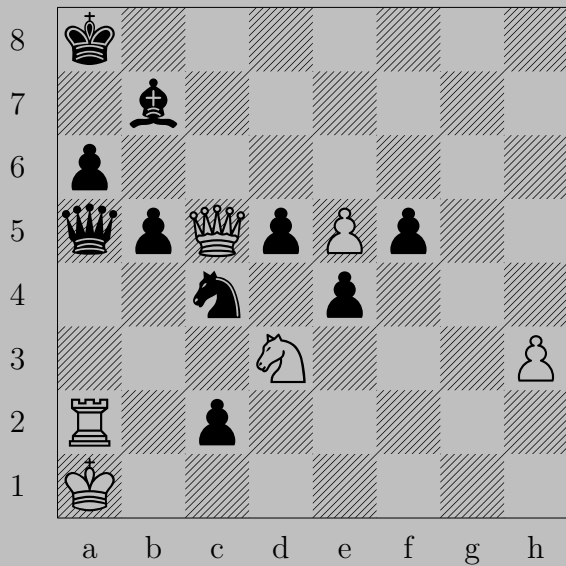


1276

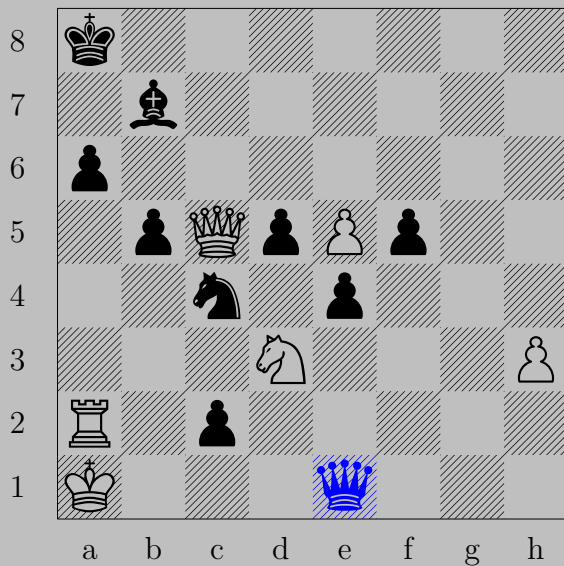


- ♔xg2+
♕xg2, ♘h3

1277



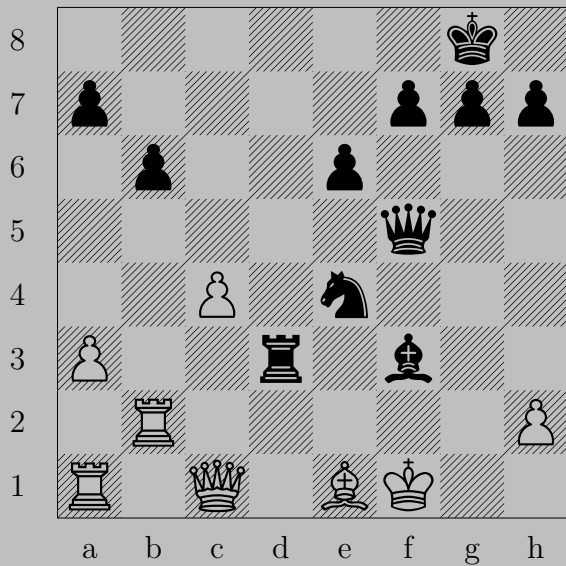
1277



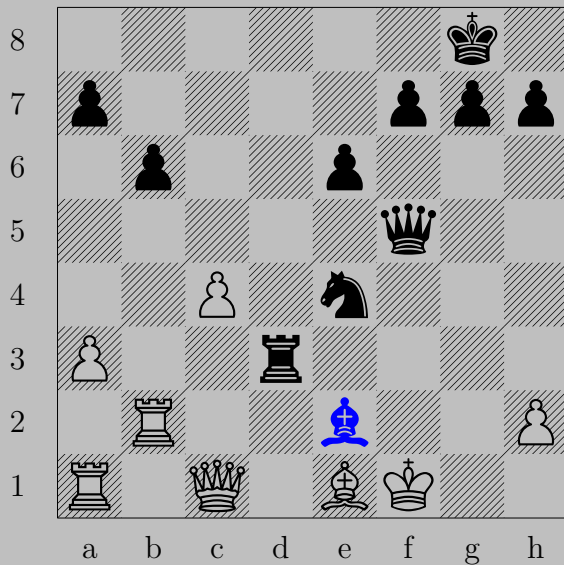
- ♔e1+

If ♘×e1, ♖c1(♔). If ♘c1, ♔×c1.

1278



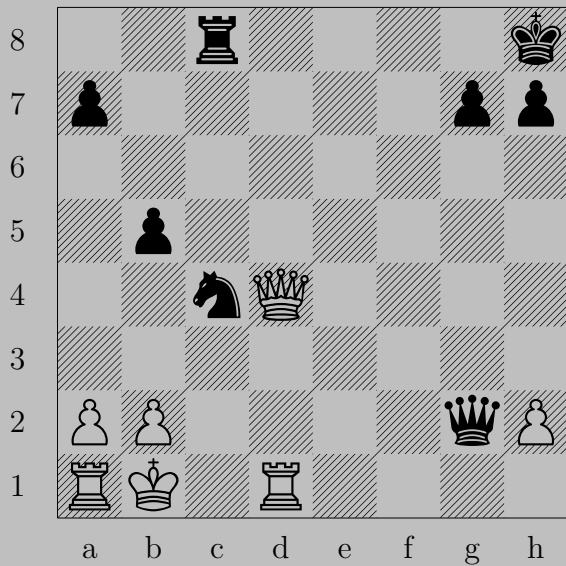
1278



- ♘e2+

If ♔×e2, ♚f3. If ♔g1 or ♔g2, ♚f1.

1279

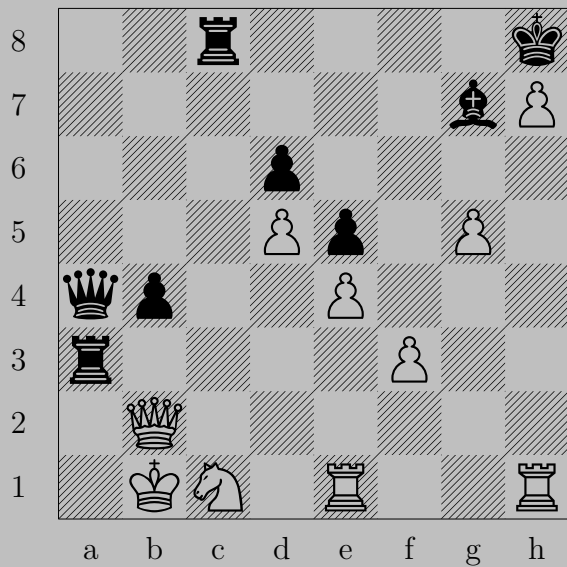


1279

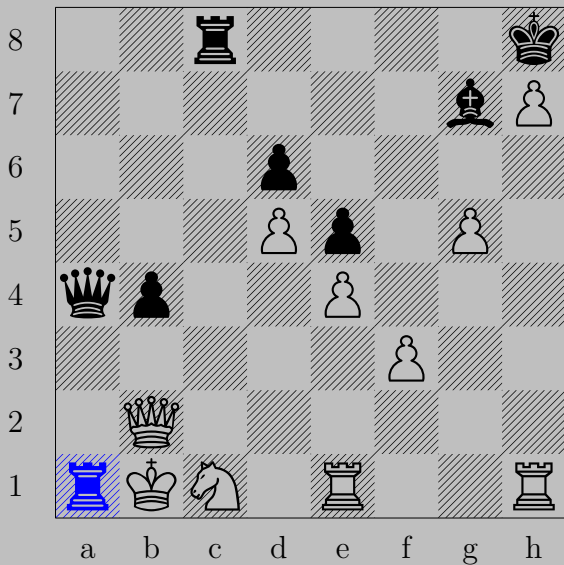


- ♞a3+
♙xa3, ♚c2

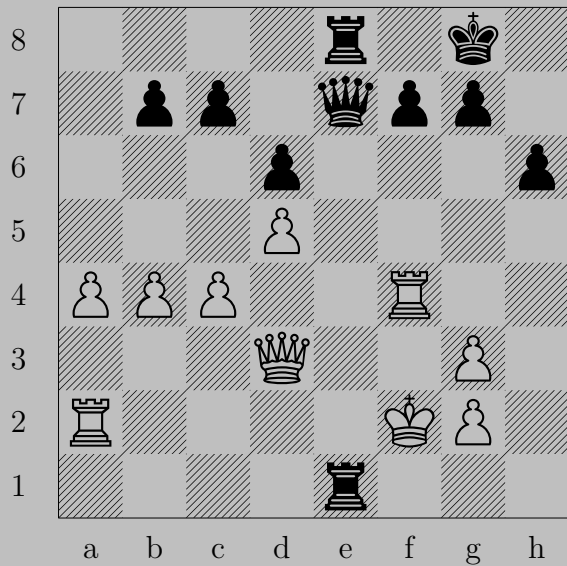
1280



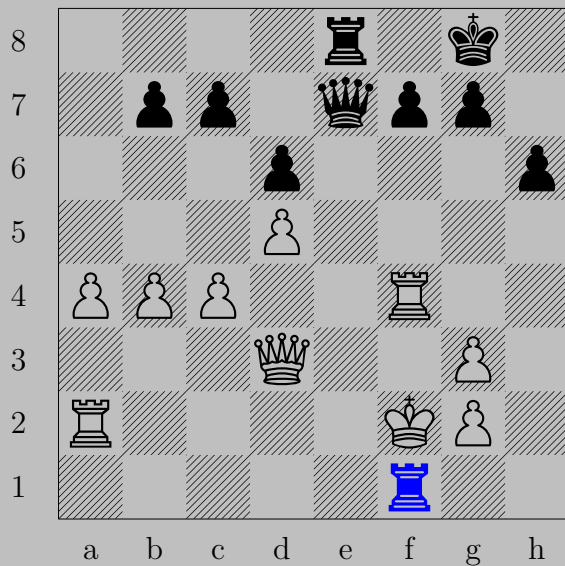
1280



- ♖a1+
♔xa1, ♔c2



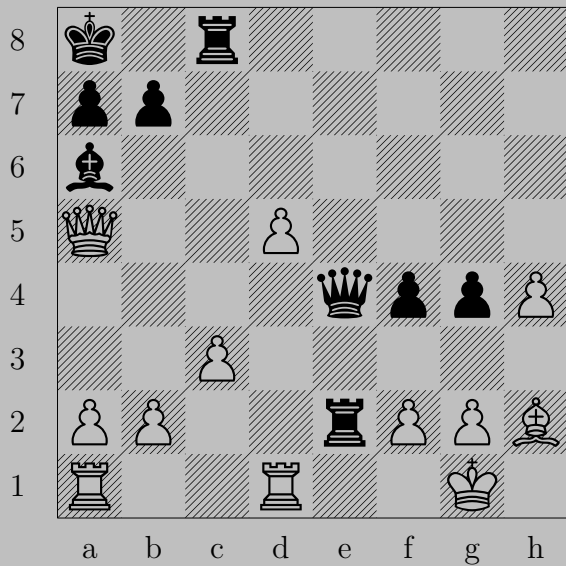
1281



– ♖f1+

If ♕×f1, ♕e3. If ♔×f1, ♕e1.

1282



1282

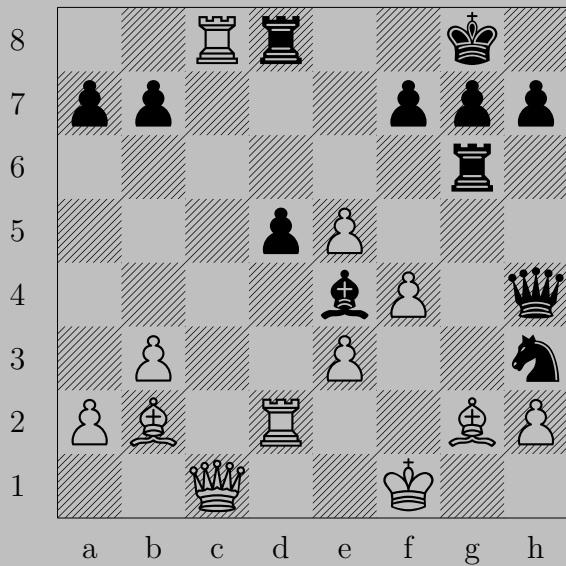


– ♖xf2

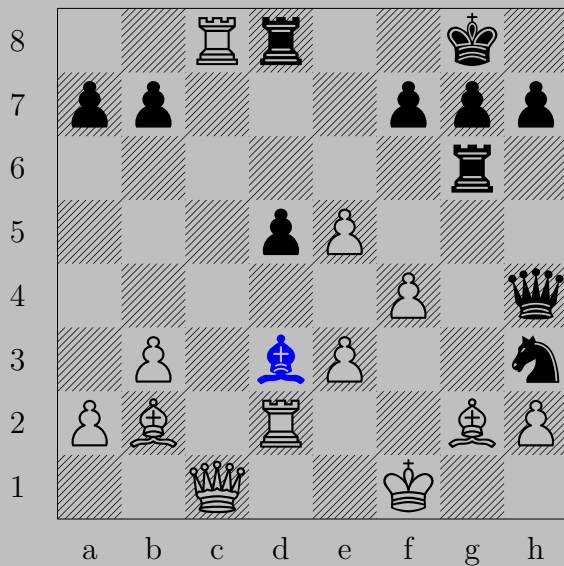
If ♔xf2, ♔e2,

Otherwise, ♔xg2.

1283

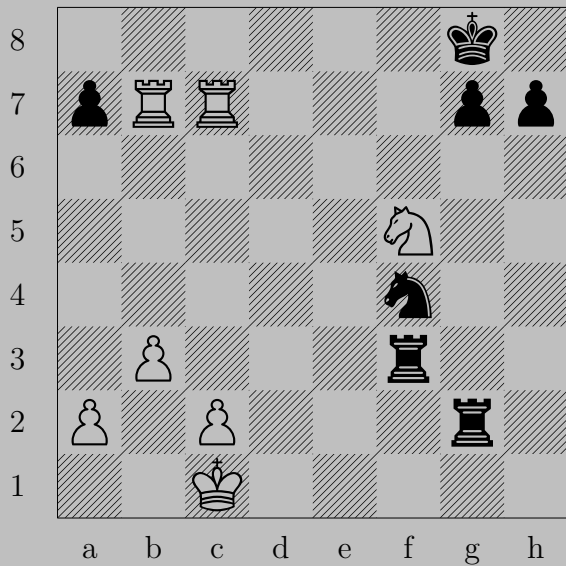


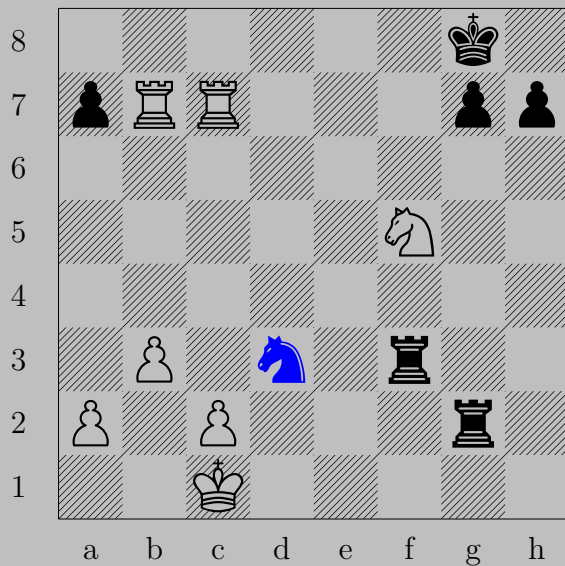
1283



- ♖d3+

♜×d3 or ♜e2, ♚f2

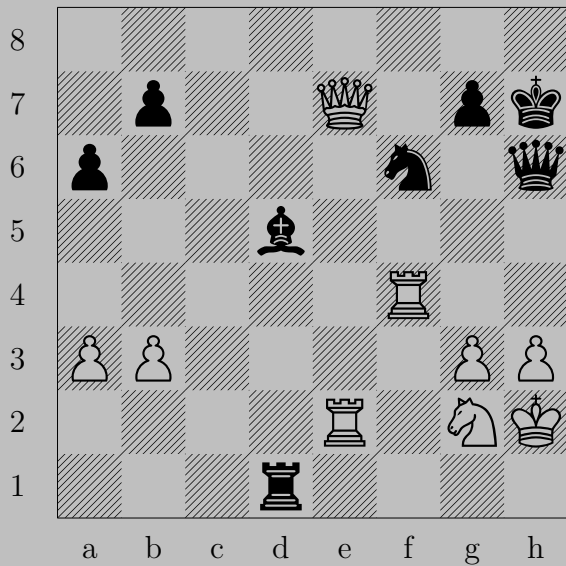




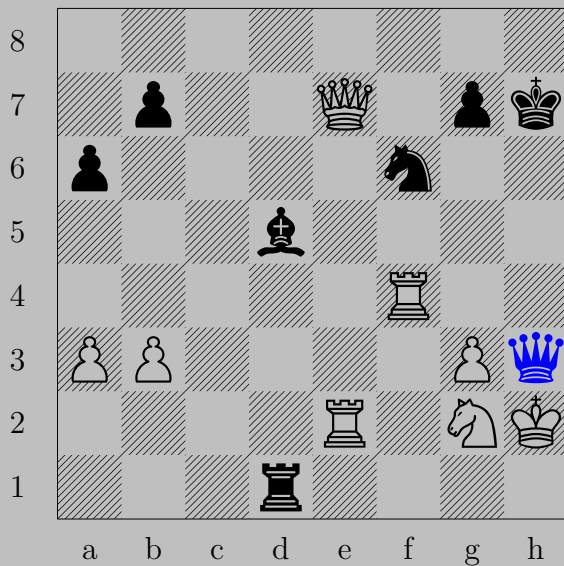
– ♞d3+

♙xd3 or ♔b1 or ♔d1, ♖f1

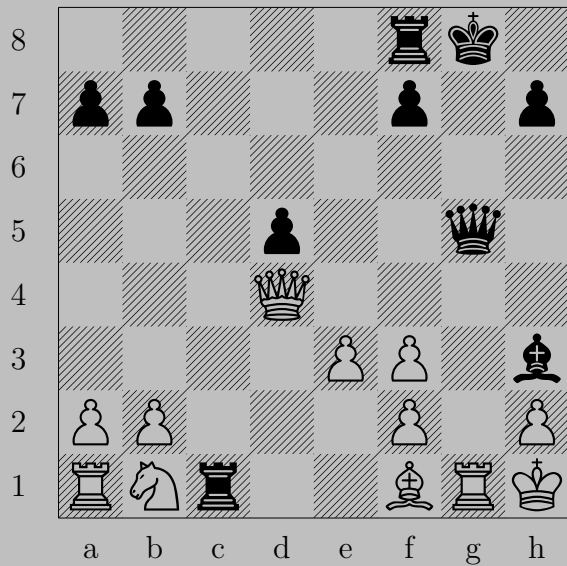
1285



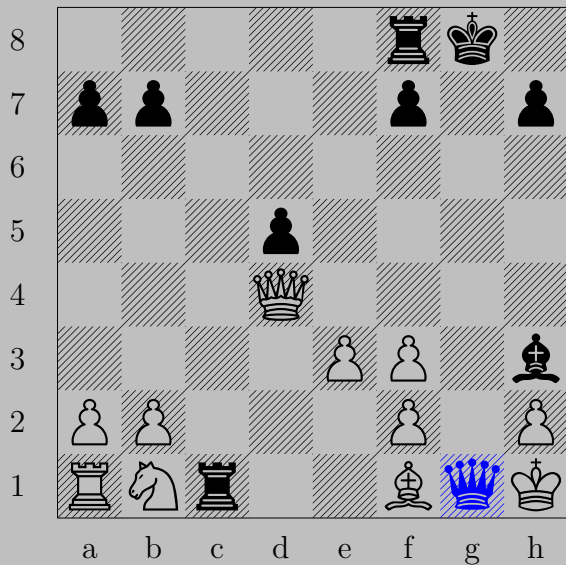
1285



- ♚xh3+
♔xh3, ♖h1

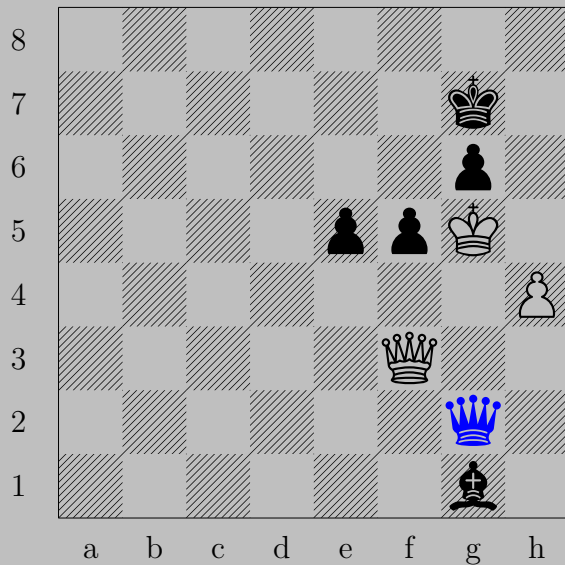


1286



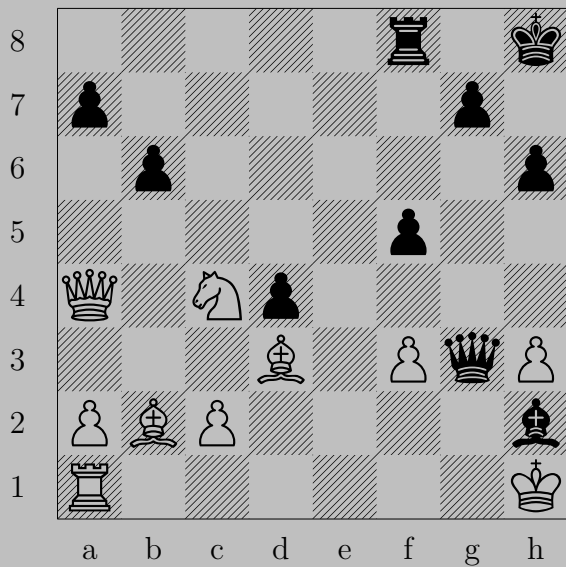
- ♔xg1+
♔xg1, ♖xf1

1287

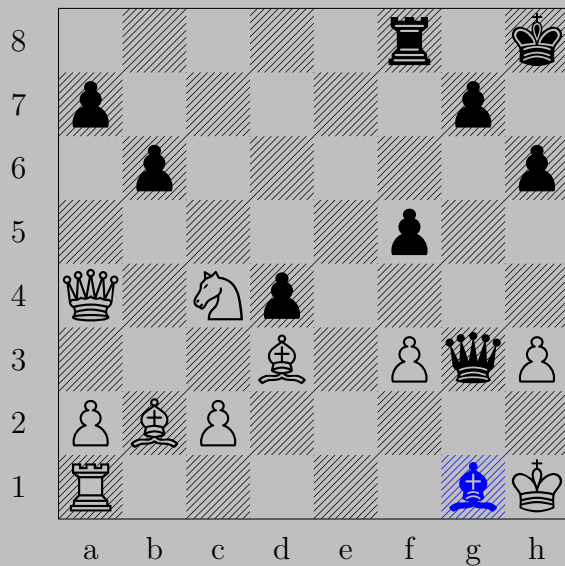


- ♔xg2+

If ♔xg2, ♕e3. If ♔g3, ♔xg3. If ♔g4, ♔xg4.



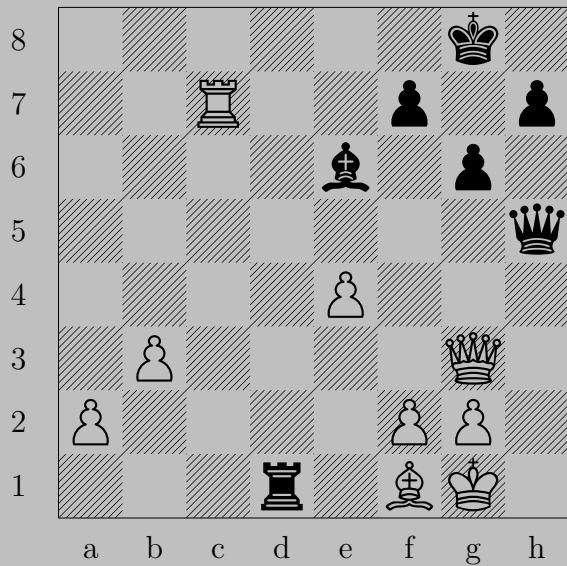
1288

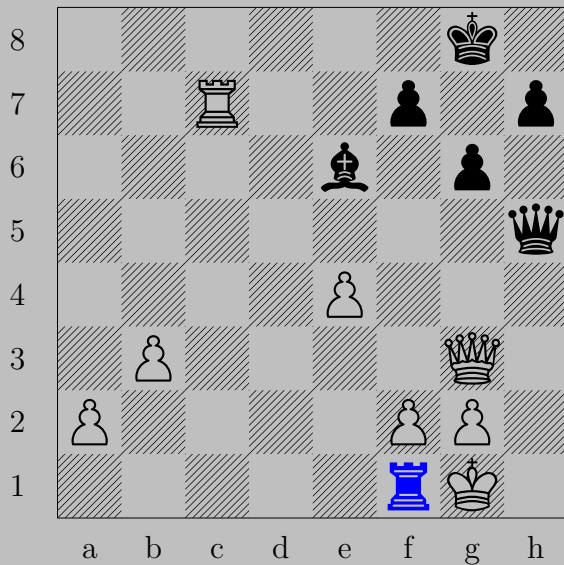


– ♘g1

If ♖×g1, ♕×h3.

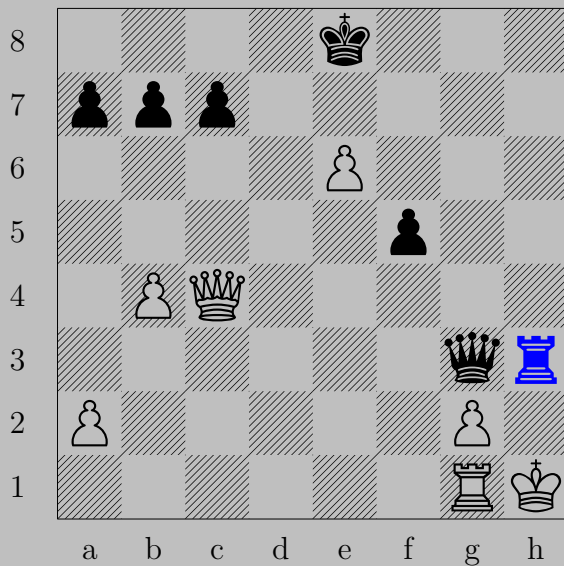
Otherwise, ♕h2.





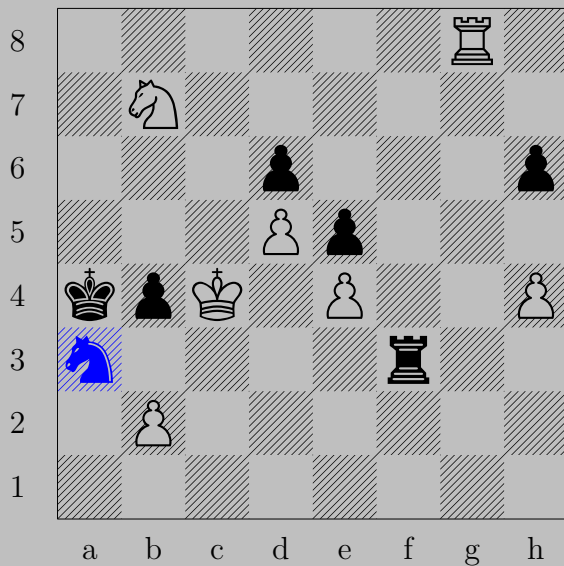
$- \text{R} \times f1 +$
 $\text{K} \times f1, \text{Q} d1$

1290



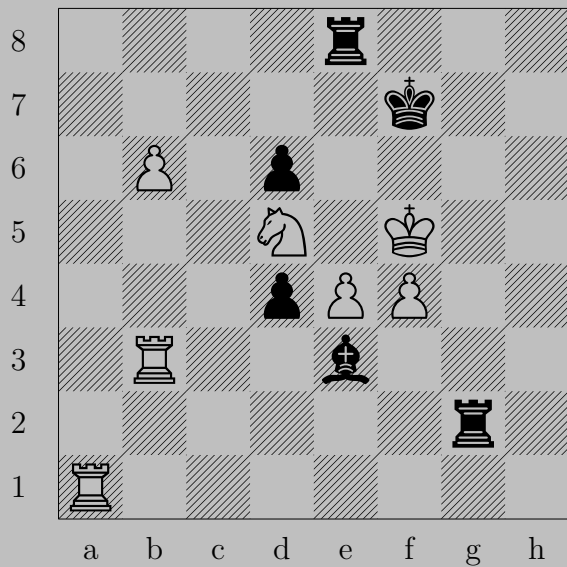
- ♖xh3+
♙xh3, ♚xh3

1291

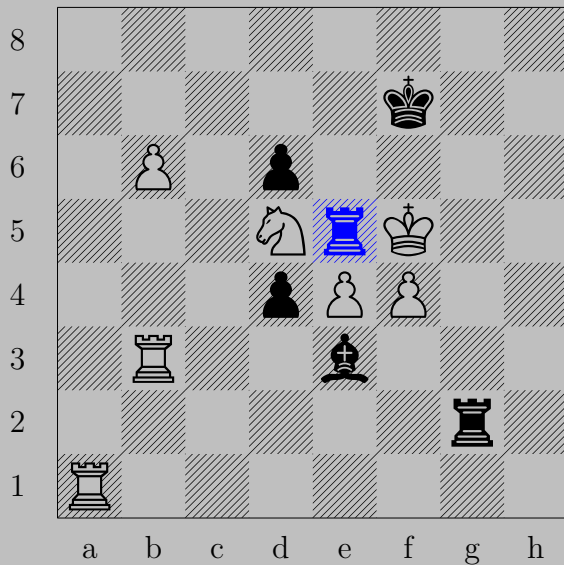


- ♞a3+
 $\text{♕}\times\text{a3}, \text{♖c3}$

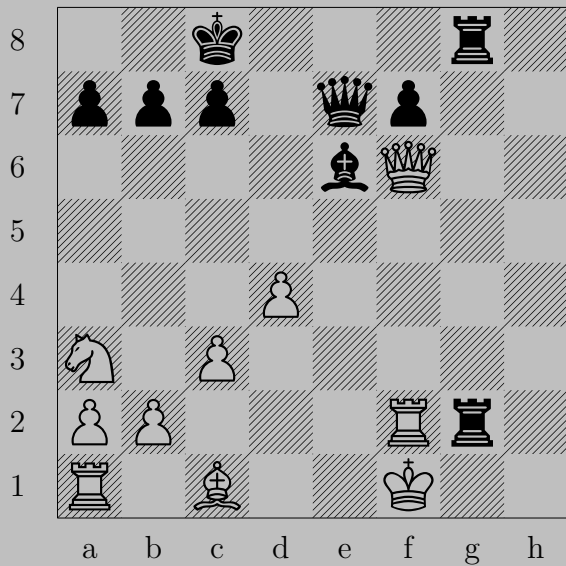
1292

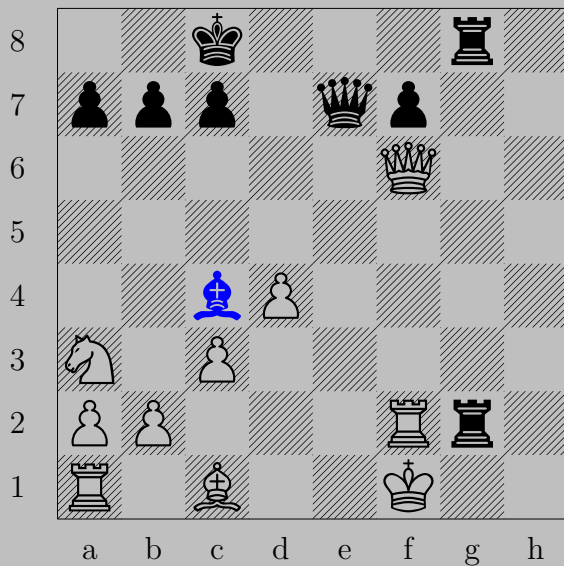


1292



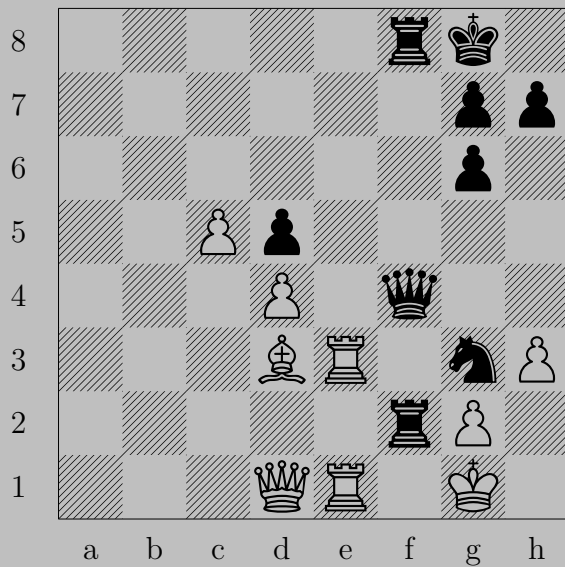
- ♖e5+
♗xe5, ♖g5





- ♖c4+

If ♜xc4, ♖g1. If ♜e2, ♚xe2.

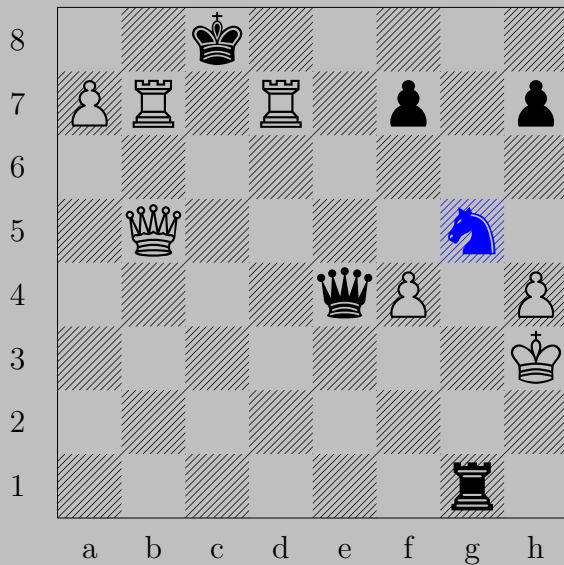


1294



- ♖xg2+
♔xg2, ♚f2

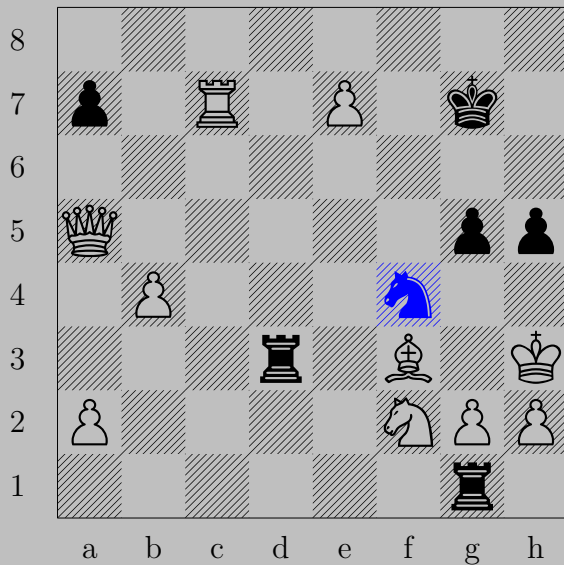
1295



– ♞g5+

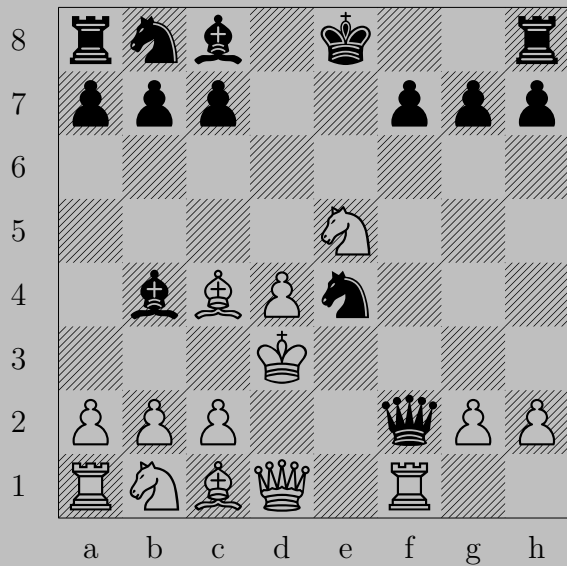
♙xg5 or ♚xg5 or ♔h2, ♚h1

1296

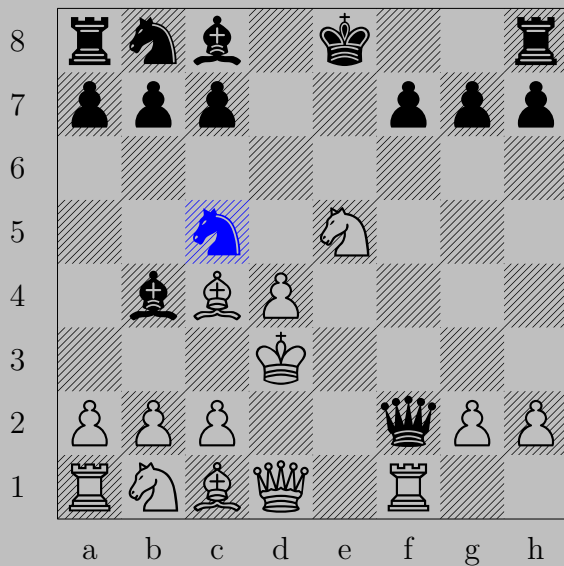


- ♞f4+
♔g3, ♖xg2

1297

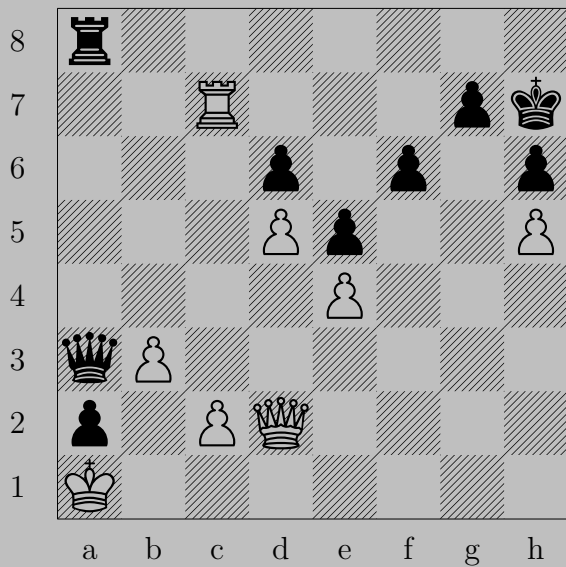


1297

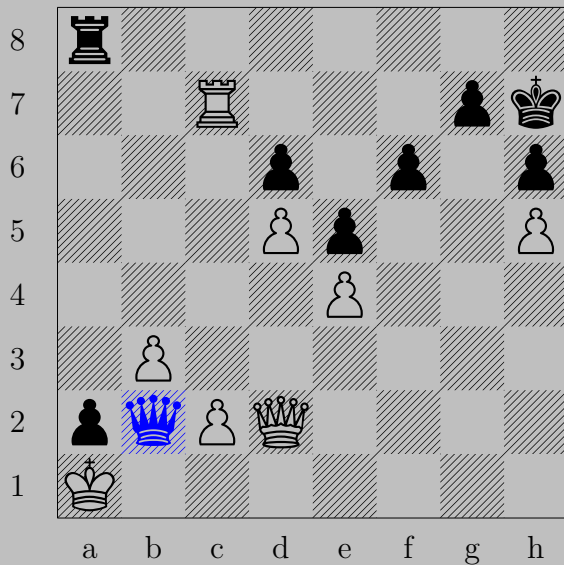


- ♞c5+

♙xc5, ♚f5



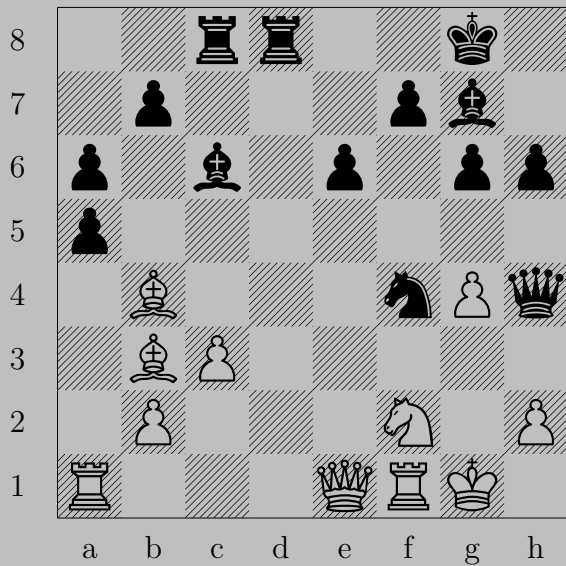
1298



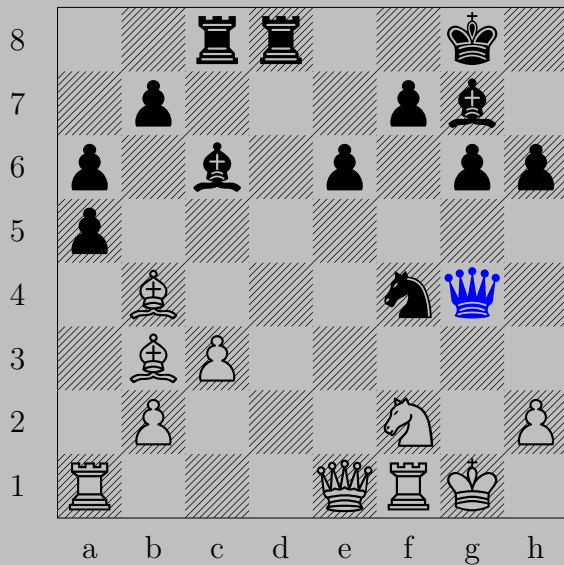
- ♚b2+

♙×b2, ♘a1(♚)

1299



1299



- ♔xg4+
♘xg4, ♘h3

1300



1300



- ♖xg2+

If ♕xg2, ♔xg2. If ♔h1, ♔xh2.