

Chess Puzzles

1301-1400

Mate in Two
Black to Move

László Polgár

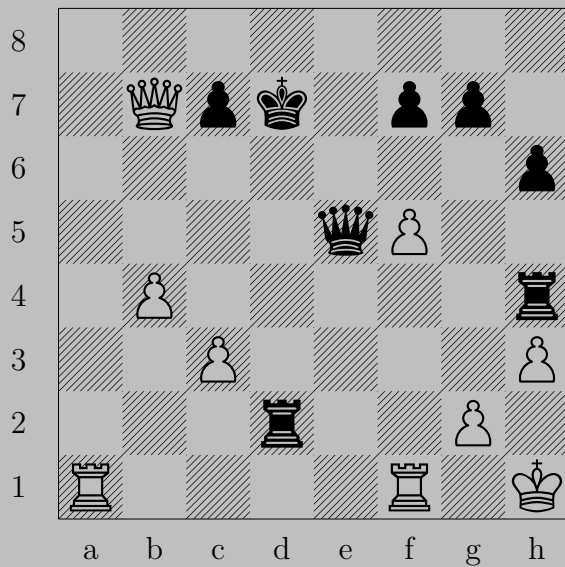
Links

1301	1302	1303	1304	1305	1306	1307	1308	1309	1310
1311	1312	1313	1314	1315	1316	1317	1318	1319	1320
1321	1322	1323	1324	1325	1326	1327	1328	1329	1330
1331	1332	1333	1334	1335	1336	1337	1338	1339	1340
1341	1342	1343	1344	1345	1346	1347	1348	1349	1350
1351	1352	1353	1354	1355	1356	1357	1358	1359	1360
1361	1362	1363	1364	1365	1366	1367	1368	1369	1370
1371	1372	1373	1374	1375	1376	1377	1378	1379	1380
1381	1382	1383	1384	1385	1386	1387	1388	1389	1390
1391	1392	1393	1394	1395	1396	1397	1398	1399	1400

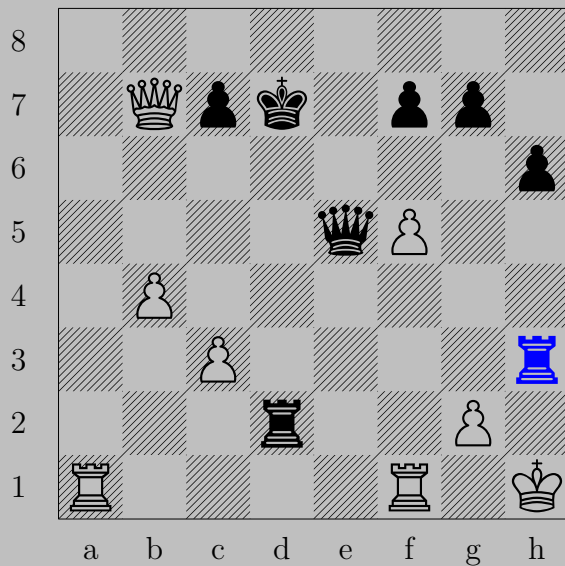
1301



– ♞xf3+
♙xf3, ♖e1

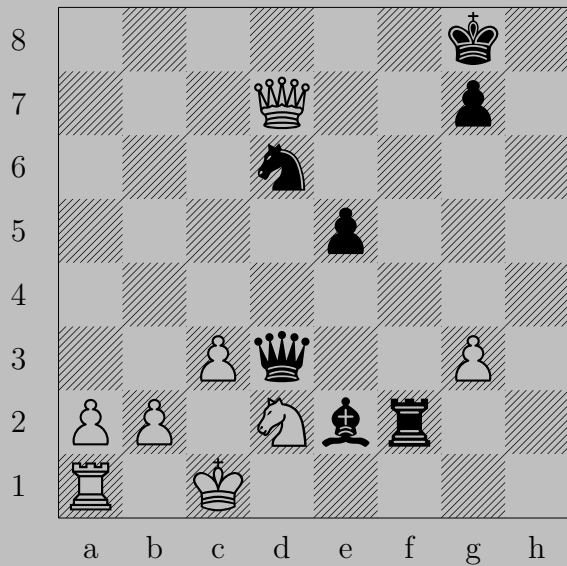


1302



– ♖×h3+

♙×h3 or ♔f1, ♚h2



1303



- ♖f1+
♞xf1, ♚d1



1304



- ♖xe4+

♔xe4 or ♔f3 or ♔g2, ♔xh2

1305

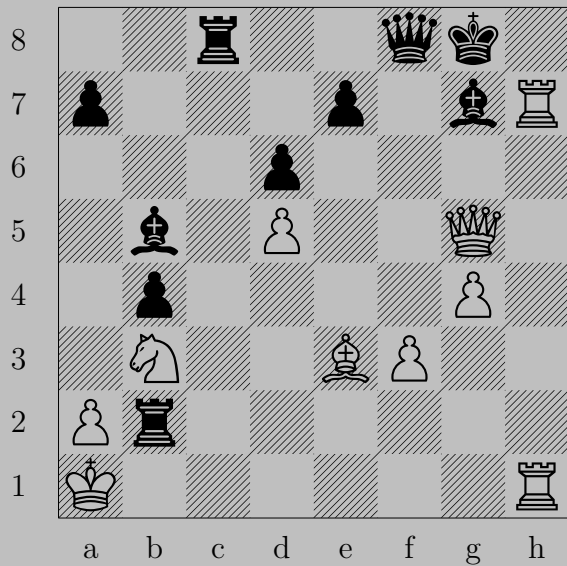


1305

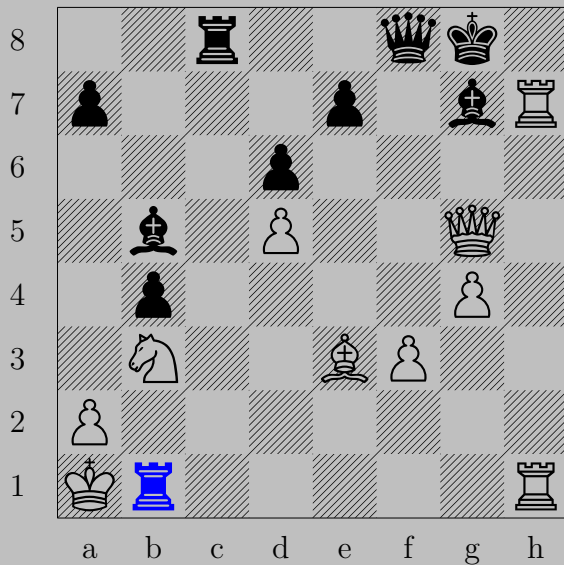


- ♖h3+

♙xh3, ♚f2

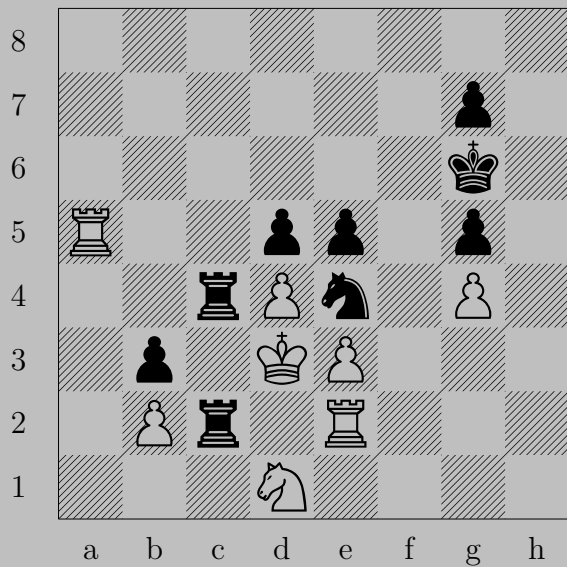


1306

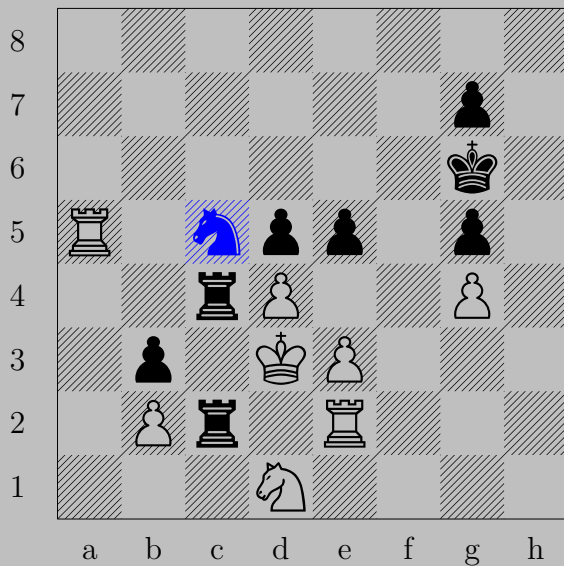


- ♖b1+
♔xb1, ♘d3

1307

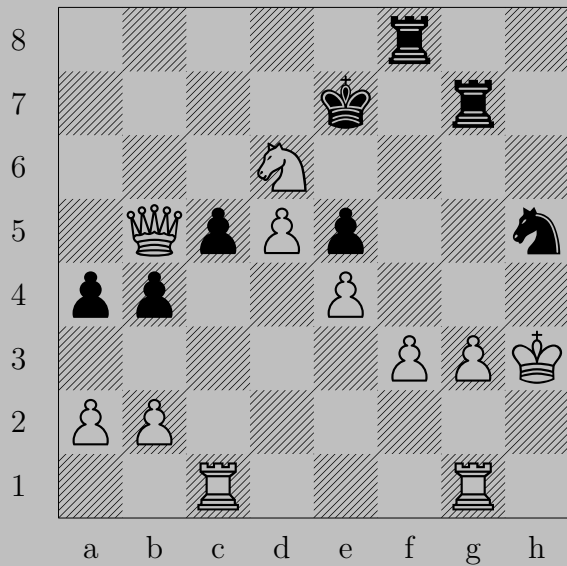


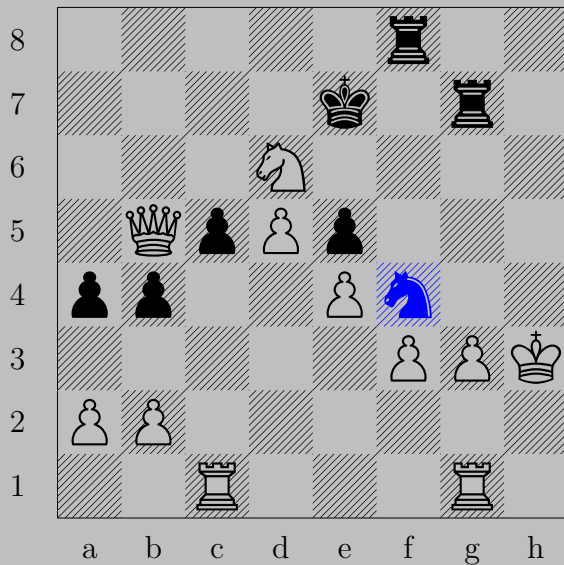
1307



- ♞c5+

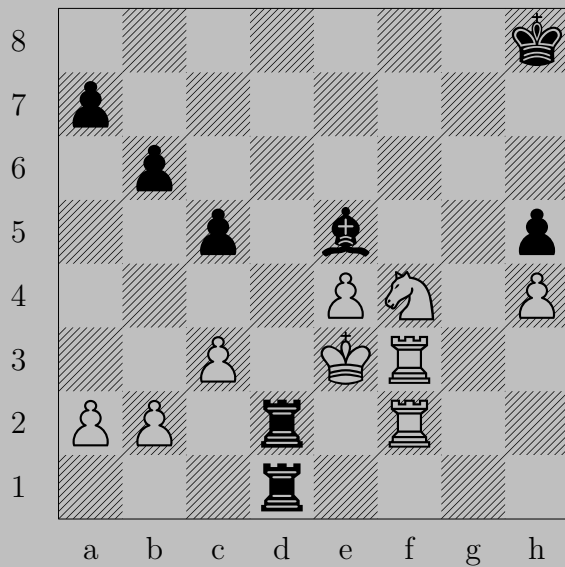
♖xc5 or ♙xc5, ♙e4





- ♞f4+

♙xf4 or ♔h2 or ♔h4, ♖h8

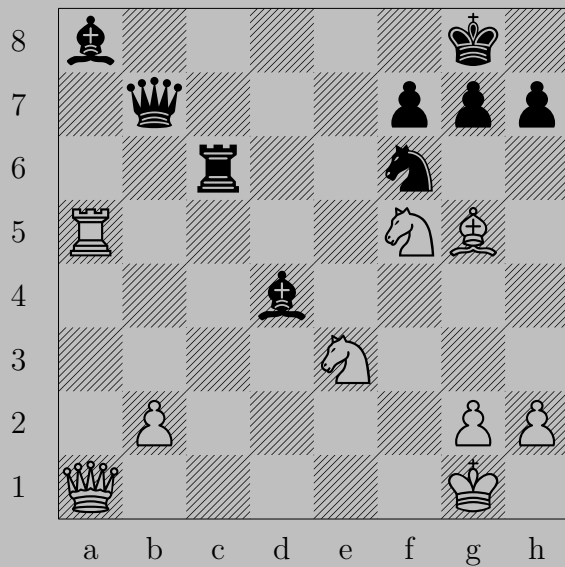


1309

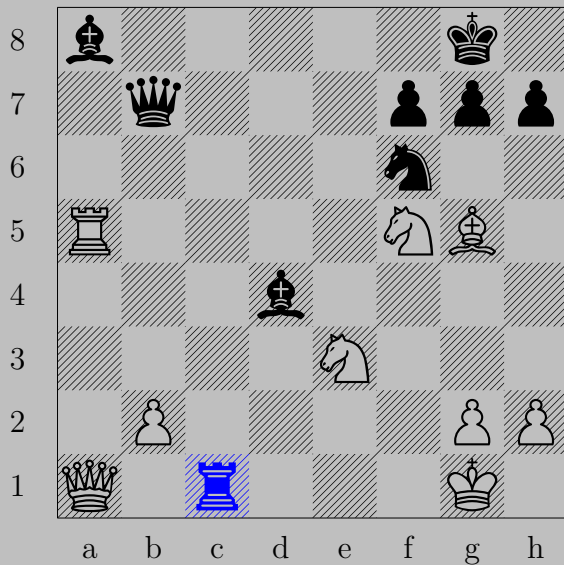


- ♗d4+
♙×d4, ♙×d4

1310

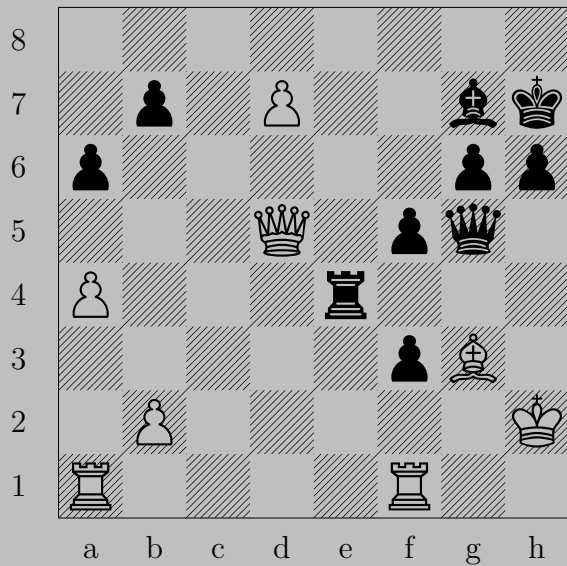


1310

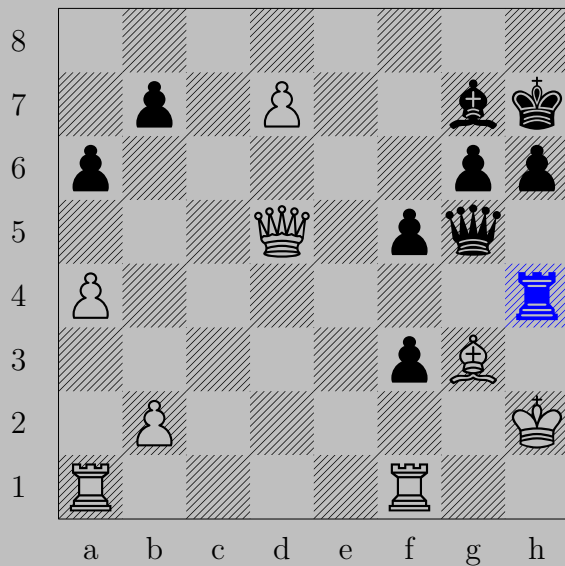


- ♖c1+

♚xc1 or ♚f2, ♚xg2



1311



- ♖h4+

If ♙xh4, ♚g2. If ♙g1, ♚xg3.

1312

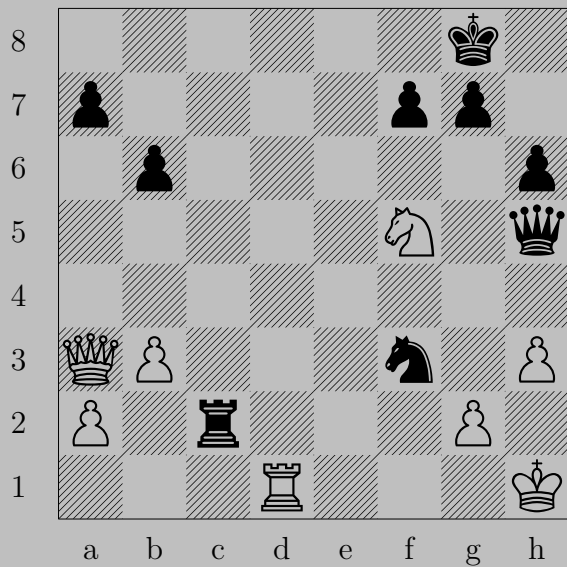


1312

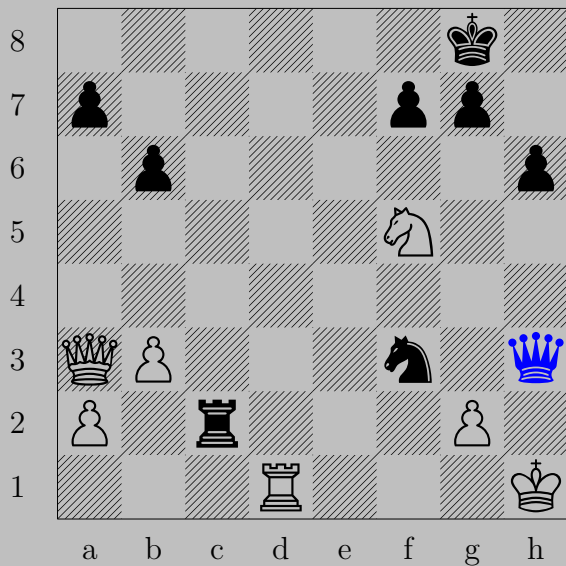


- ♚f1+
♖xf1, ♞e2

1313



1313



- ♚×h3+
♙×h3, ♖h2

1314



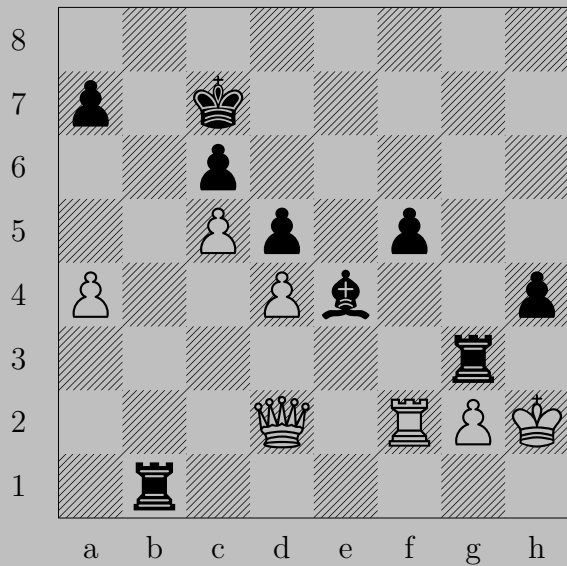
1314



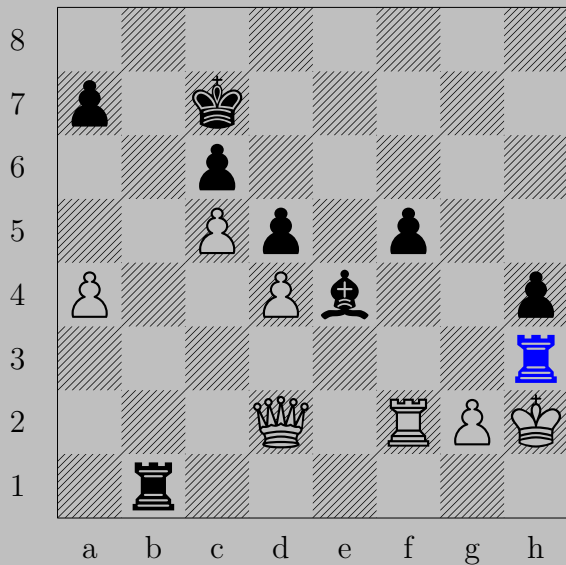
– ♖d2

If ♜xh3, ♘g2. If ♔g1 or ♔e1, ♞f3. If ♞g2, ♞d1.

1315

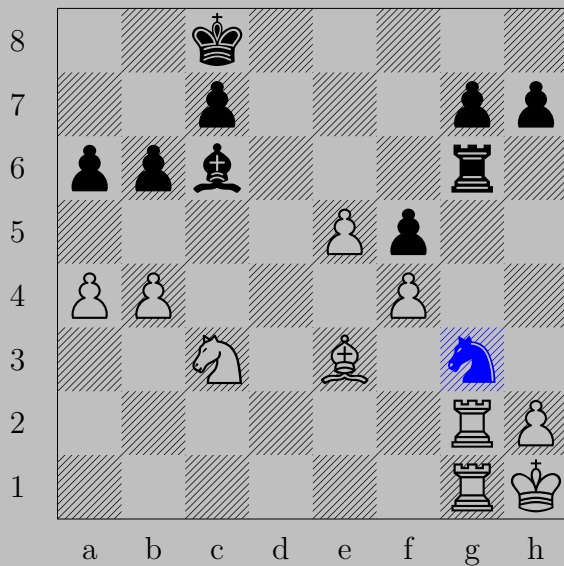


1315



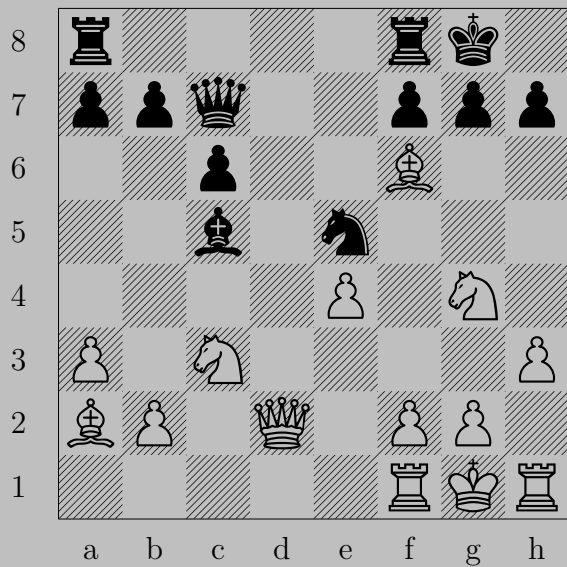
- ♖h3+
♙xh3, ♖h1

1316



- ♞g3+
♙xg3, ♞h6

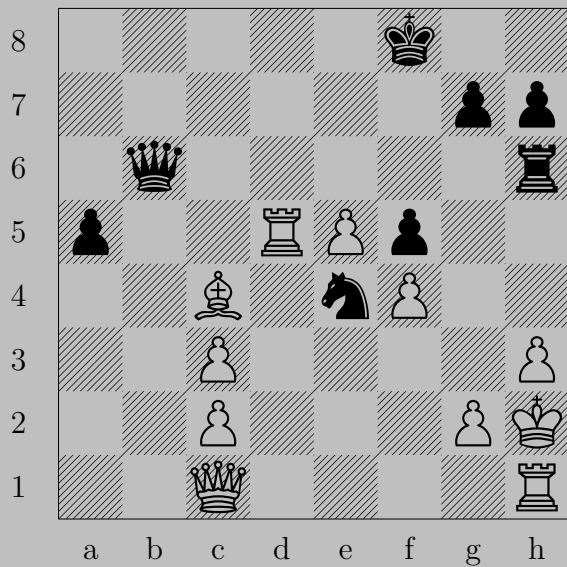
1317

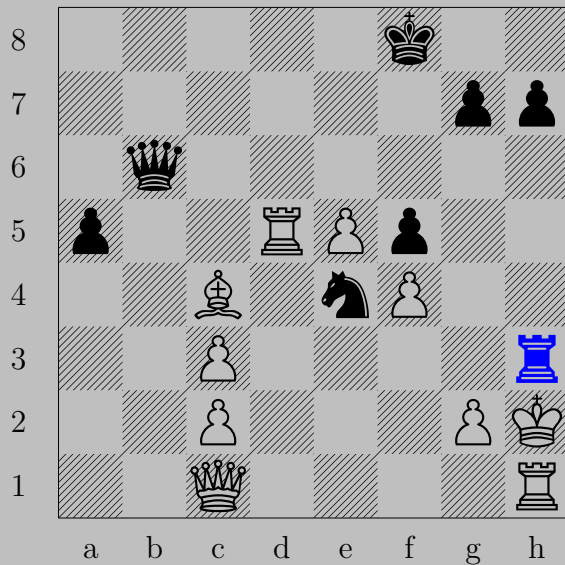


1317



- ♘f3+
♙x f3, ♚g3

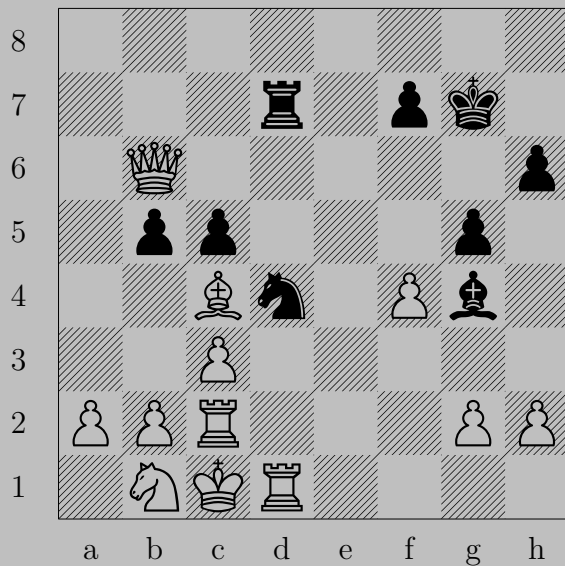




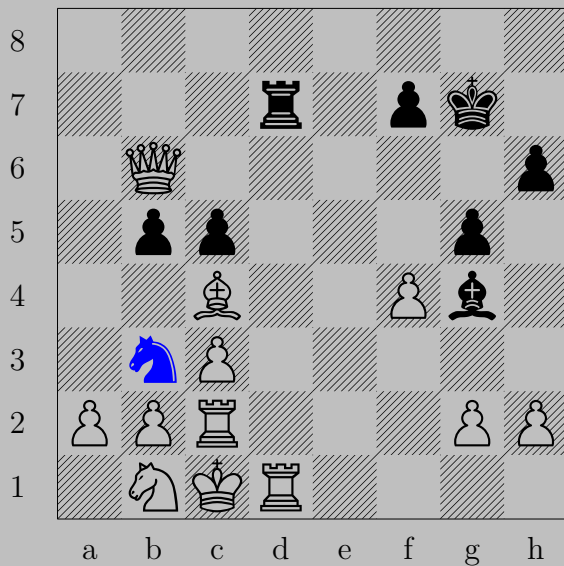
– ♖×h3+

If ♜×h3, ♚f2. If ♚×h3, ♚h6.

1319

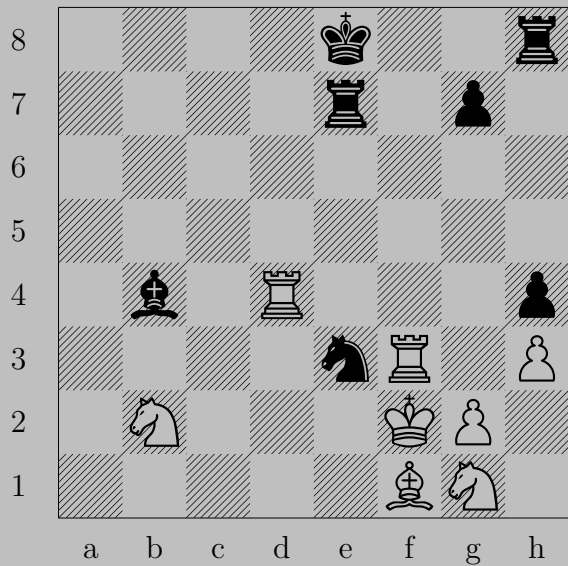


1319



- ♞b3+
♙×b3, ♖×d1

1320

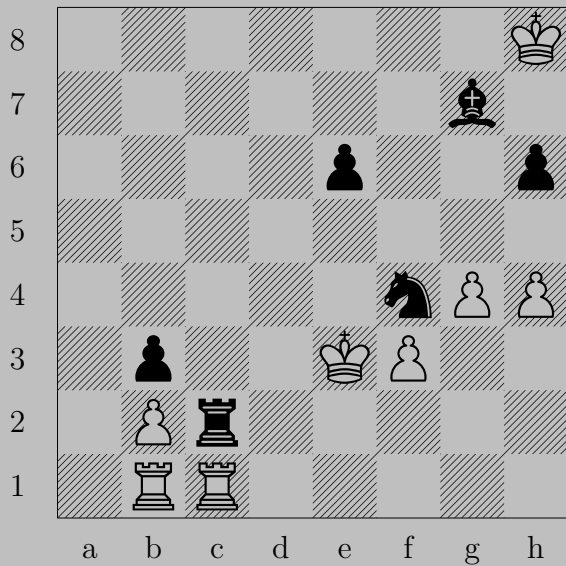


1320

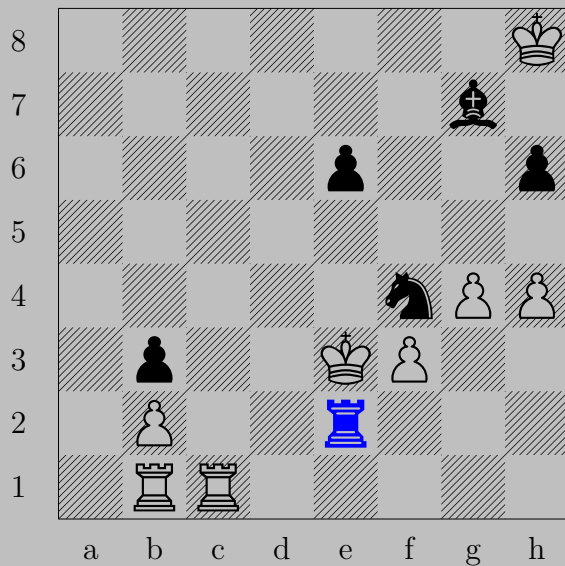


- ♞g4+
♙xg4 or ♖xg4, ♔e1

1321

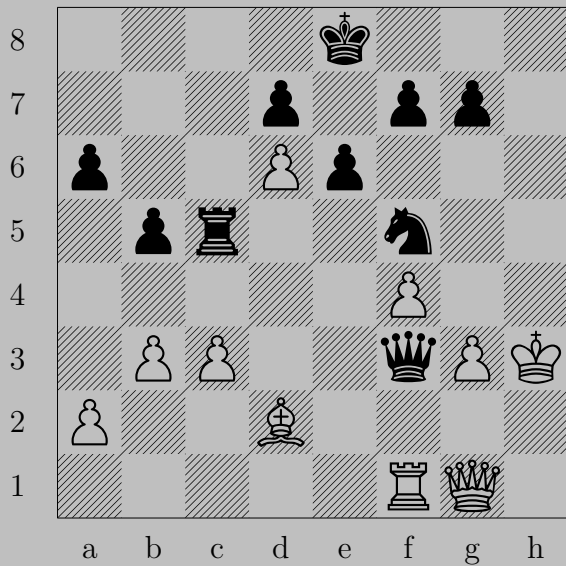


1321

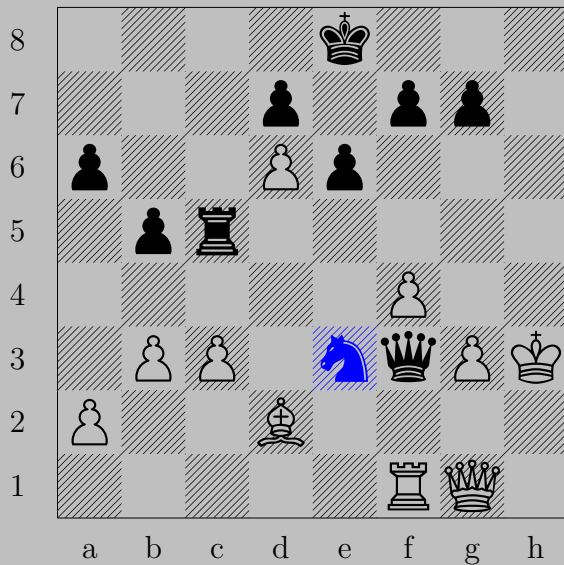


- ♖e2+
♔xf4, ♕e5

1322



1322

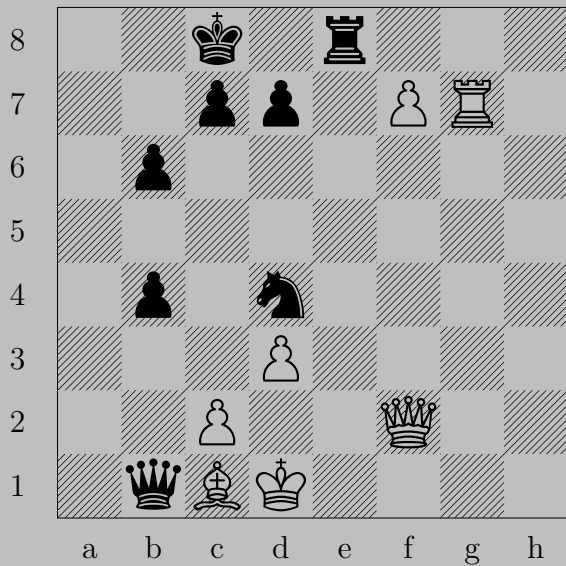


– ♞e3

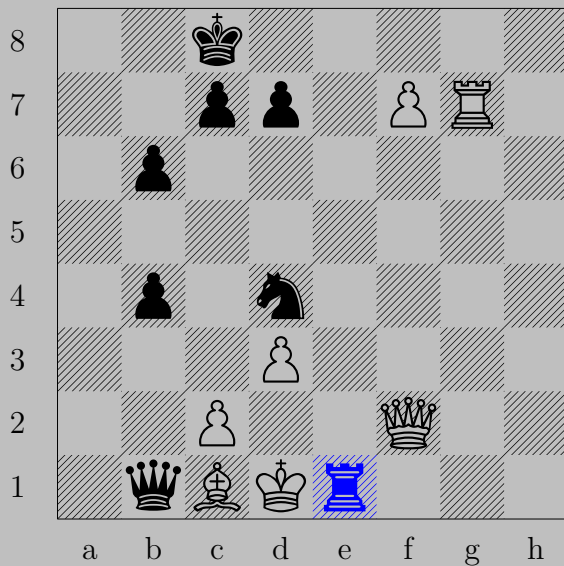
If ♜f5, ♔h5.

Otherwise, ♖h5.

1323



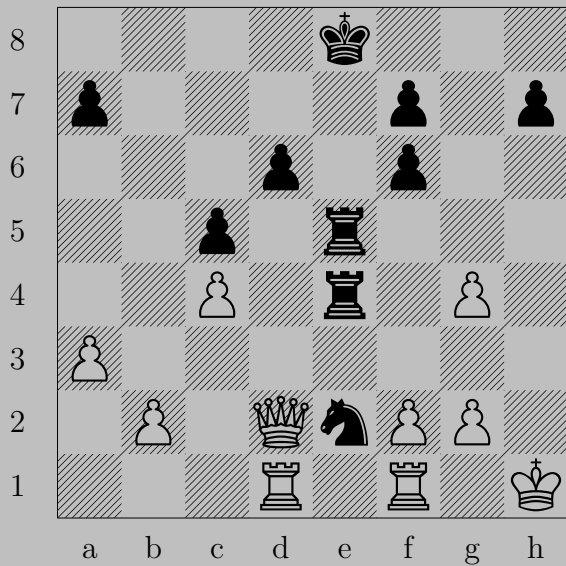
1323



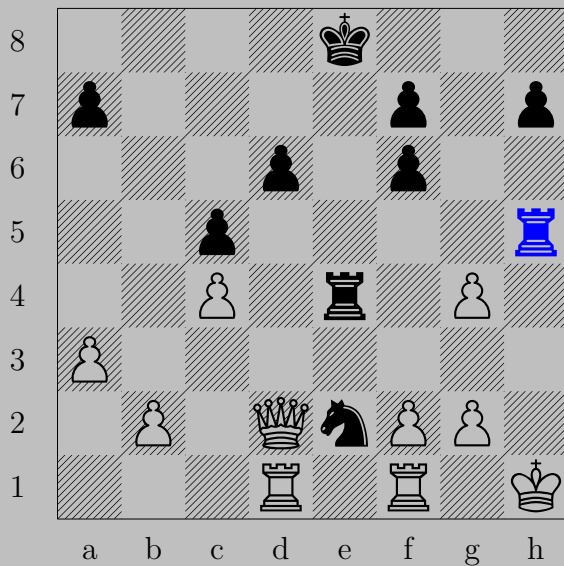
- ♖e1+

If ♙xe1, ♙xc2. If ♔xe1, ♙xc1.

1324

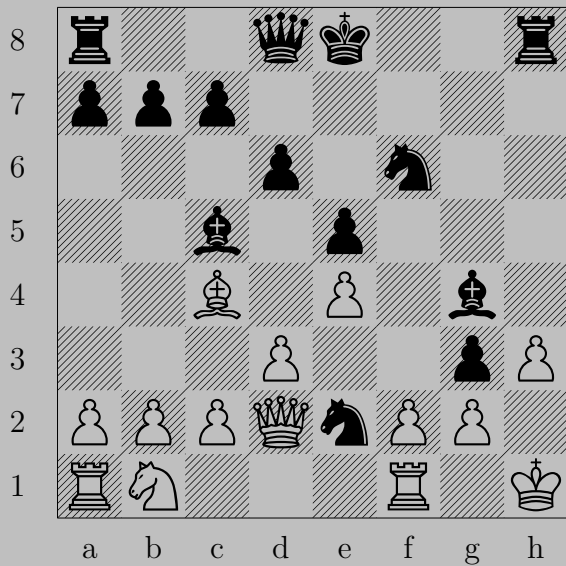


1324



- ♖h5+
♙xh5, ♖h4

1325



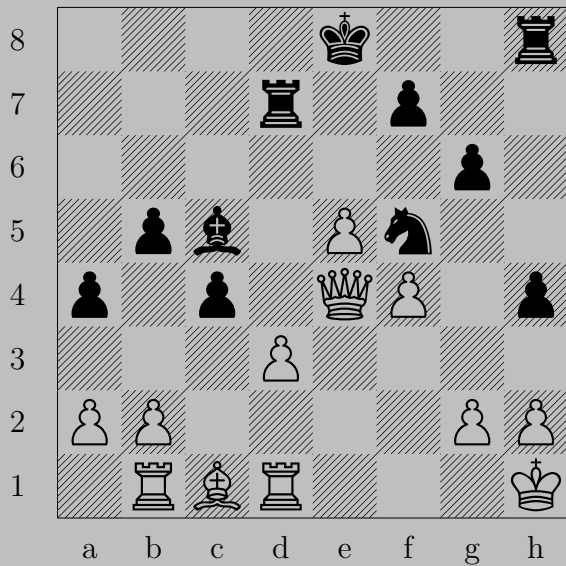
1325



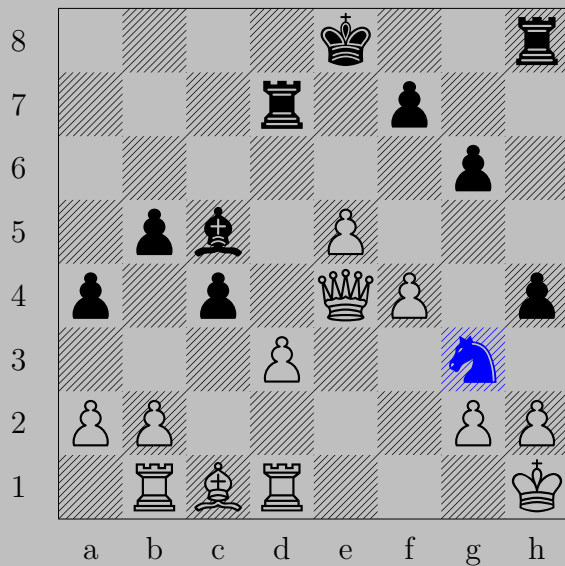
- ♖h3+

♙xh3, ♕f3

1326

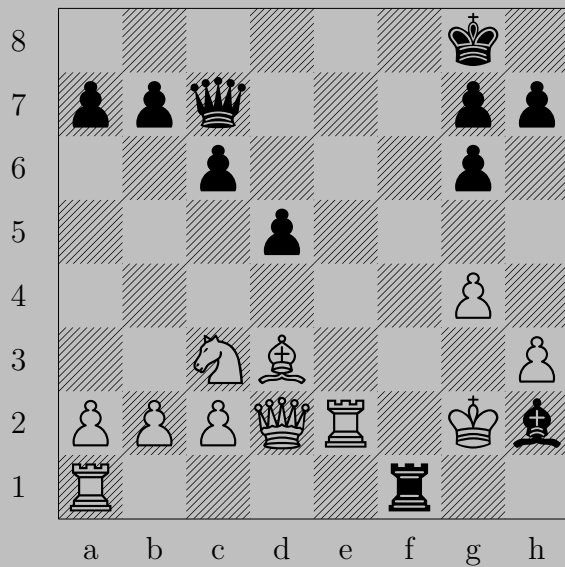


1326

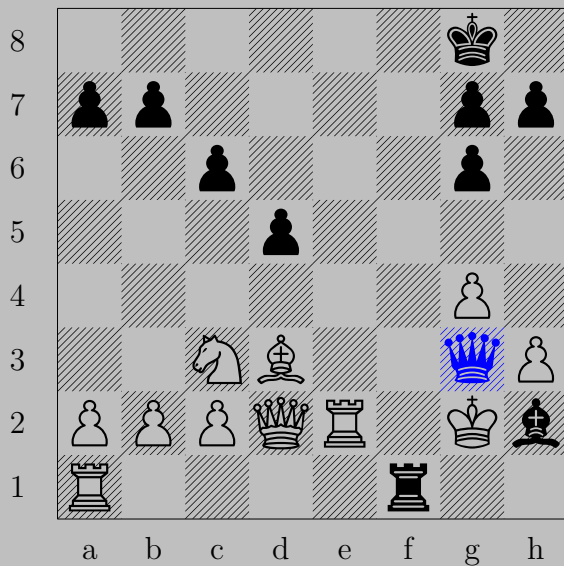


- ♞g3+
♙xg3, ♙xg3

1327

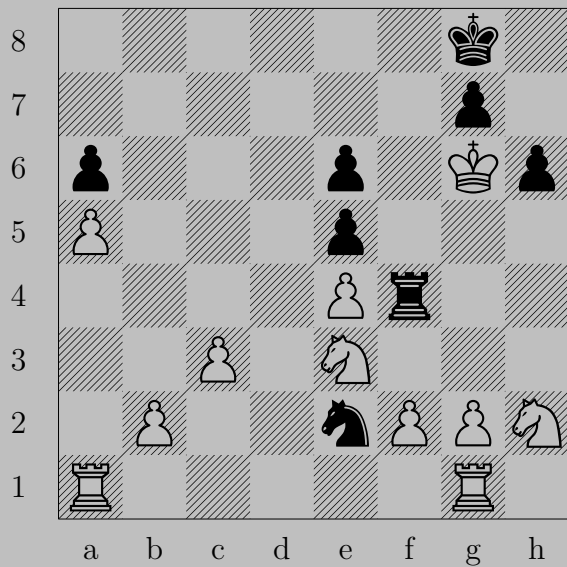


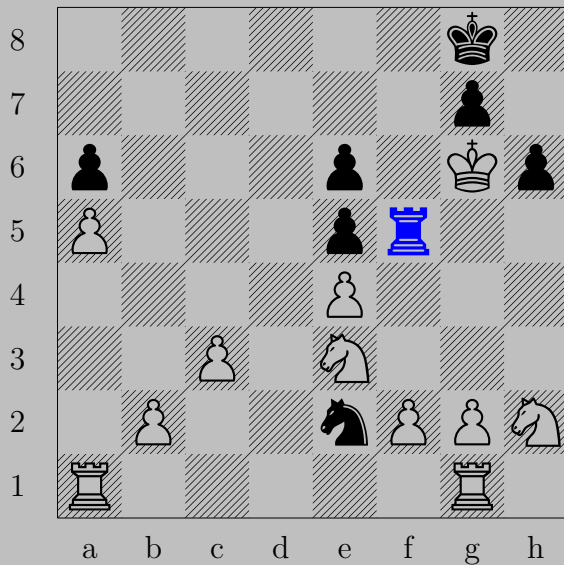
1327



- ♔g3+
♔xf1, ♔g1

1328



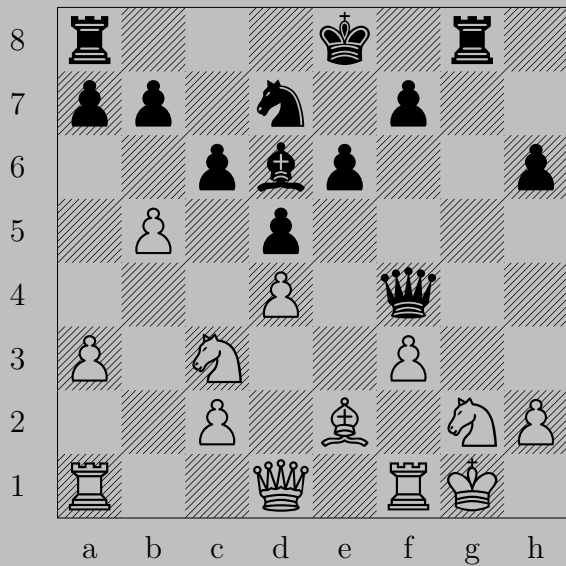


– ♖f5

If ♘g3 or ♘d5, ♖g5.

Otherwise, ♘f4.

1329



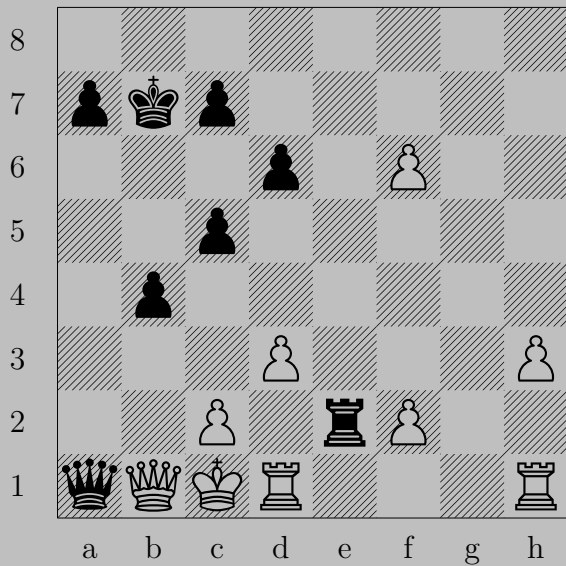
1329



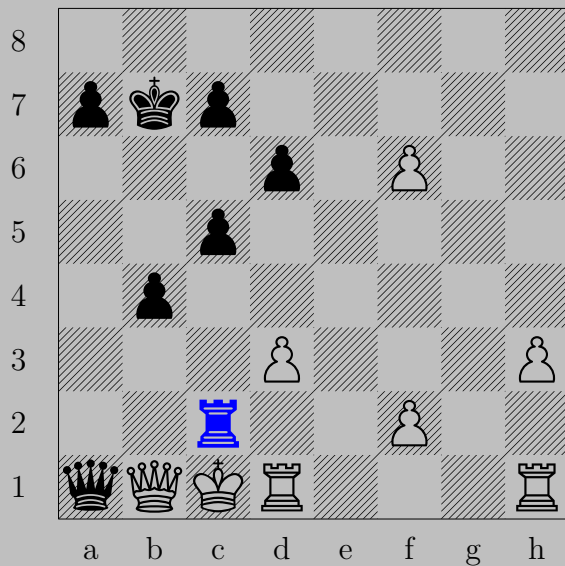
- ♖xg2+

♔xg2 or ♔h1, ♚xh2

1330

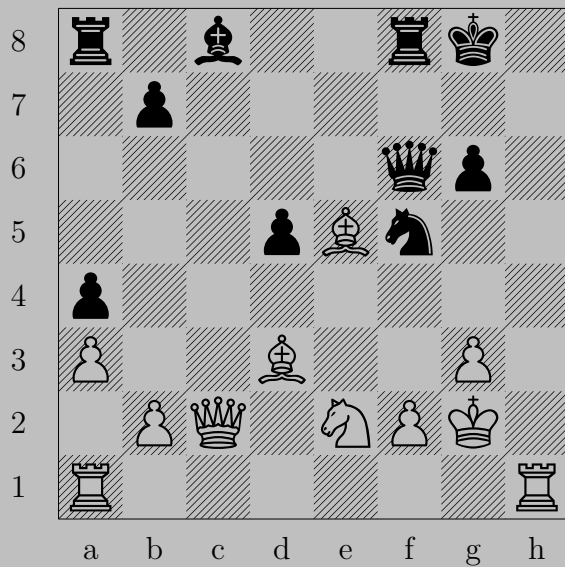


1330

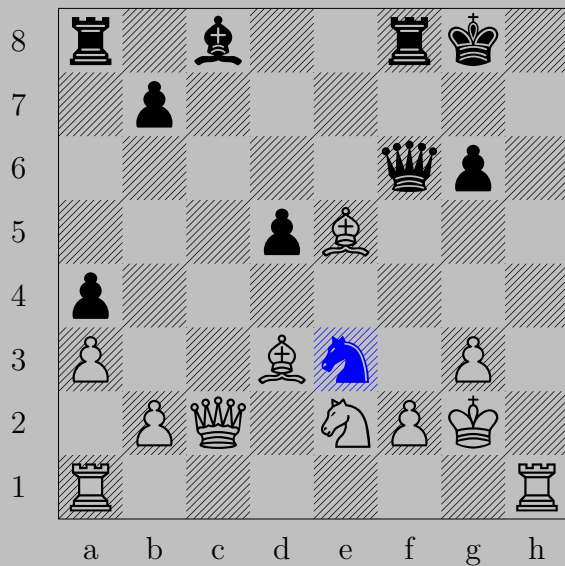


- ♖xc2+
♔xc2, ♚c3

1331



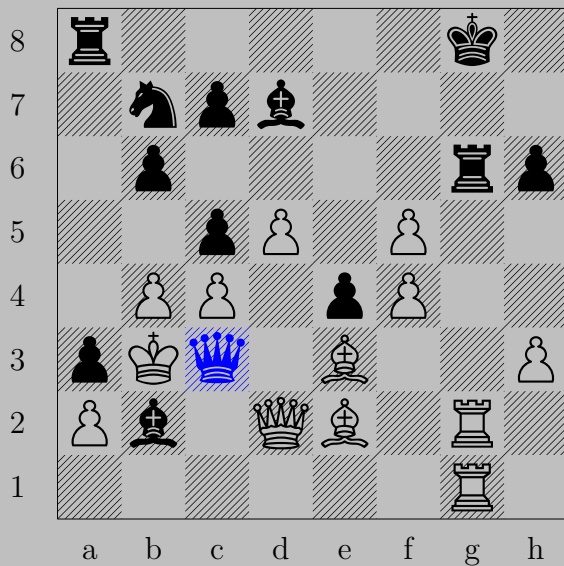
1331



- $\text{N}e3+$

If $\text{P}xe3$, $\text{Q}xf2$. If $\text{K}g1$ or $\text{K}h2$, $\text{Q}xf2$.

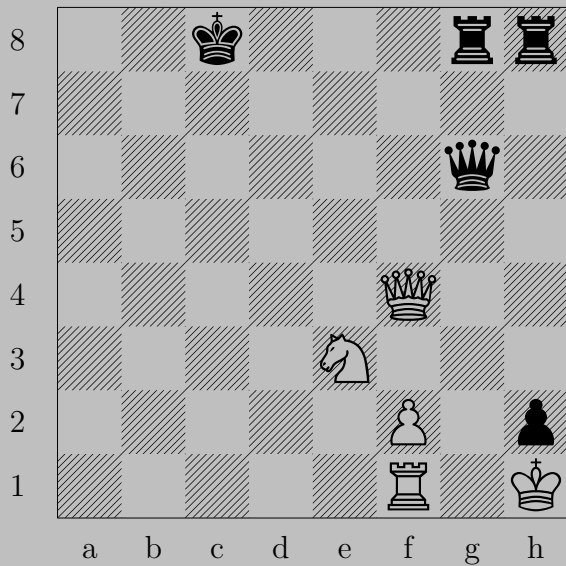
1332



- ♔xc3+

♕xc3, ♖a4

1333



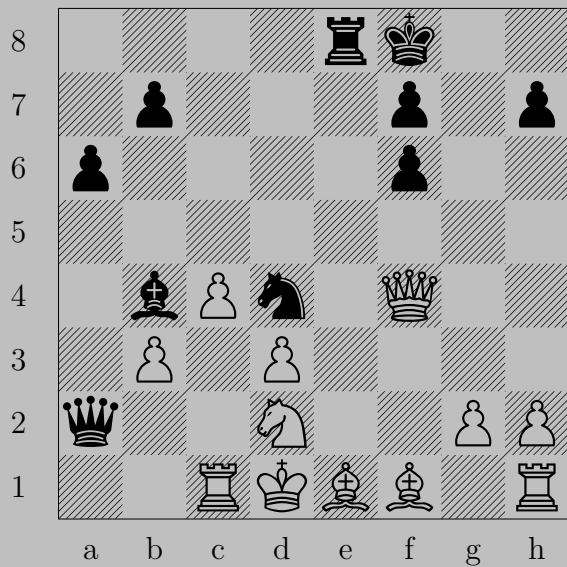
1333



- ♔g1+

♖xg1, ♕xg1(♔)

1334



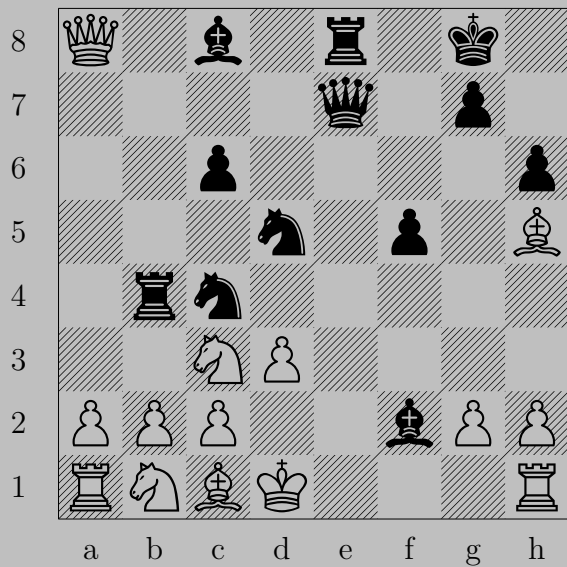
1334



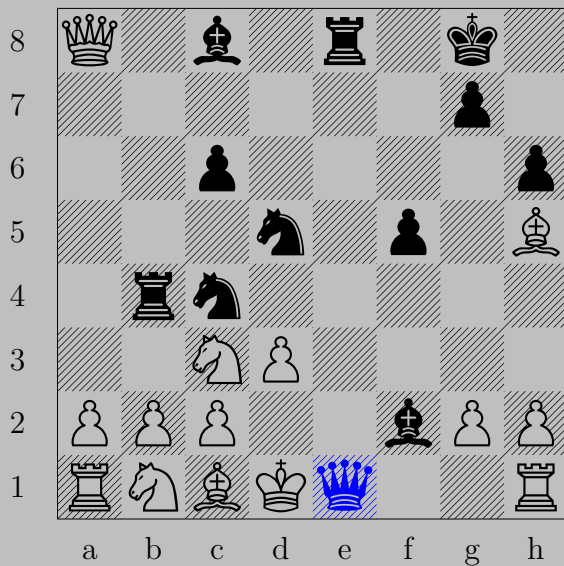
- ♔xb3+

If ♘xb3, ♖xe1. If ♖c2, ♔xc2.

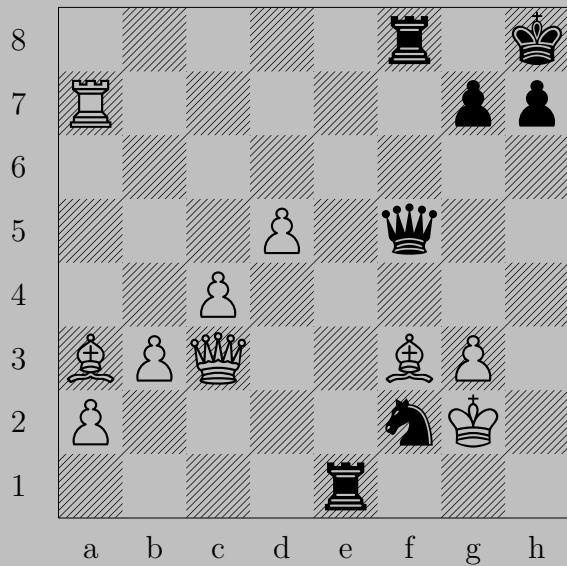
1335



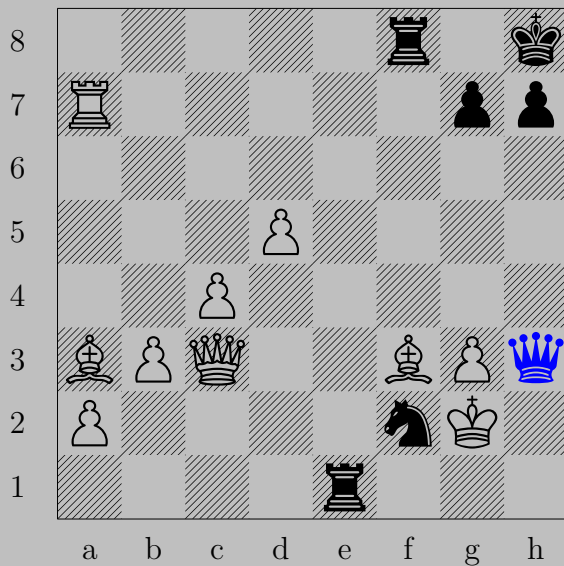
1335



- ♔e1+
♖xe1, ♗xe1

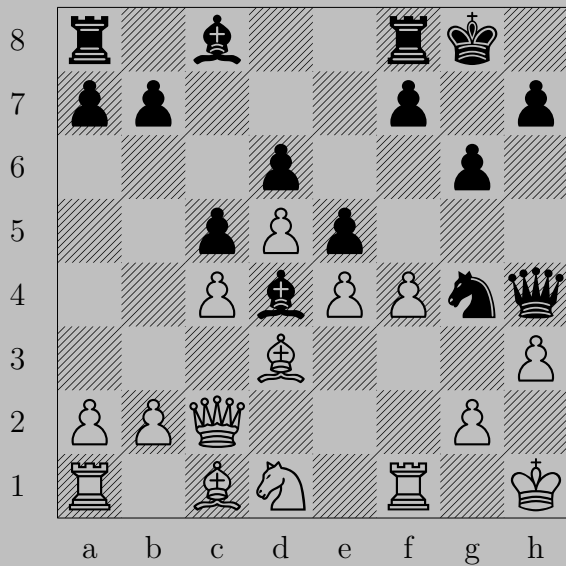


1336

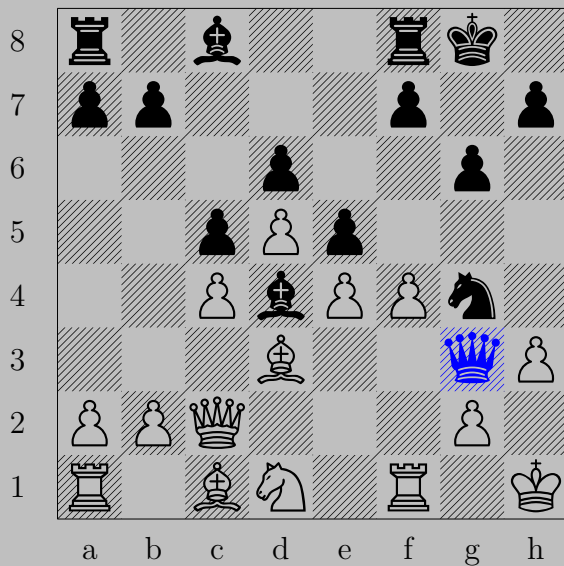


- ♔h3+
♔xf2, ♔f1

1337



1337

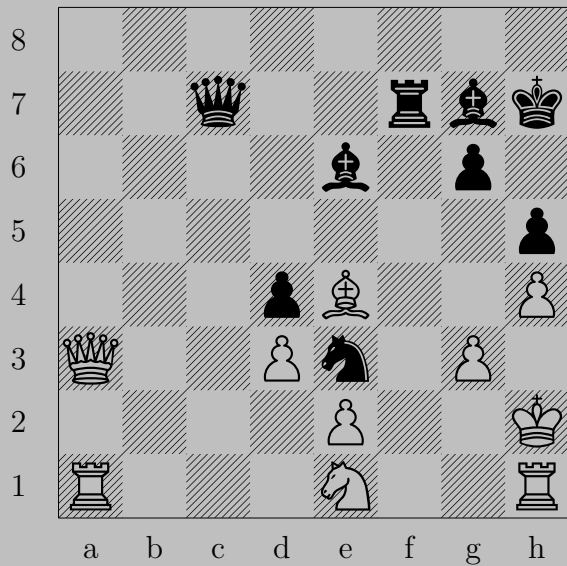


– ♔g3

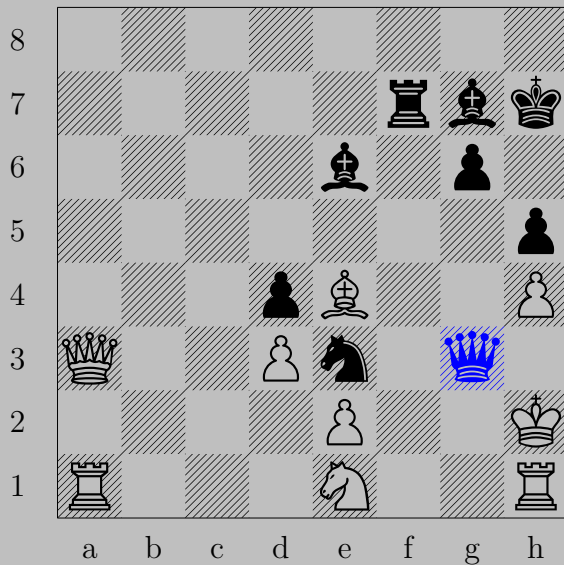
If ♖xg4, ♔h4.

Otherwise, ♔h2.

1338

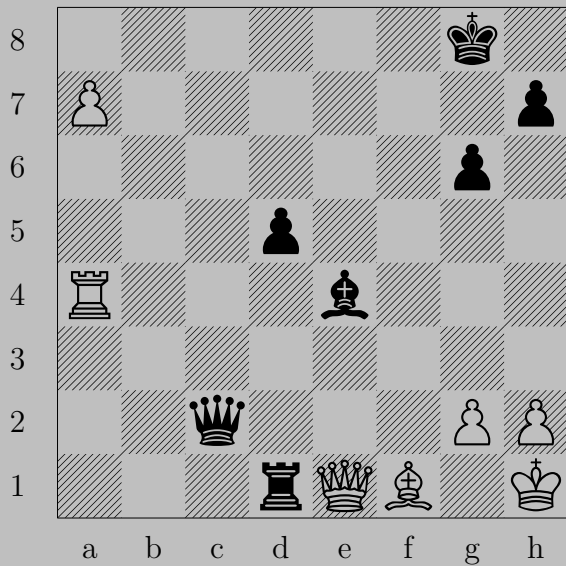


1338



- ♔xg3+
♔xg3, ♕e5

1339

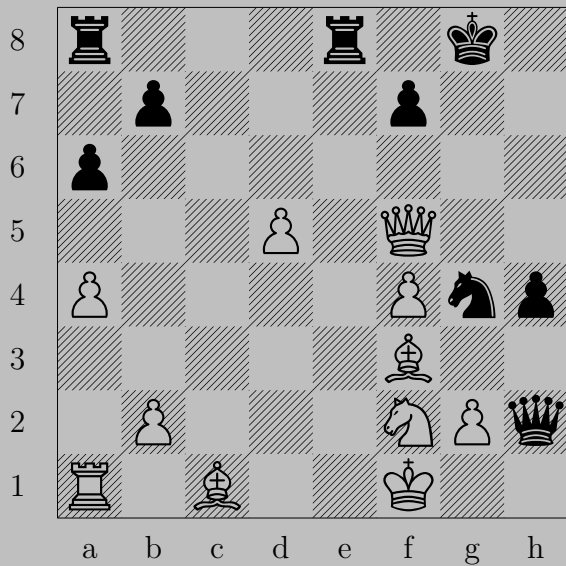


1339

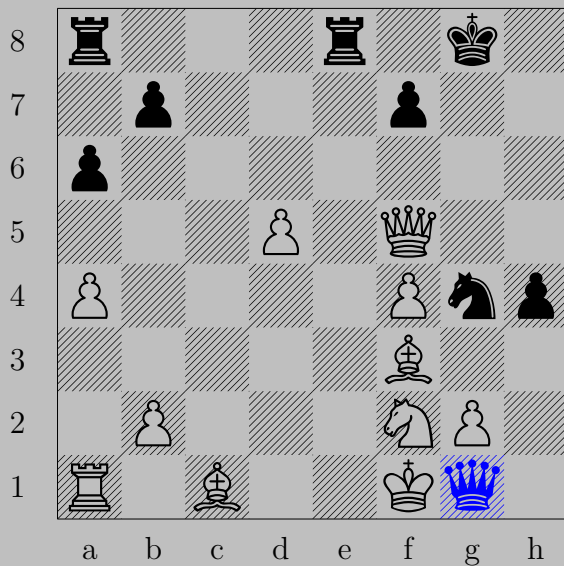


- ♔xg2+
♙xg2, ♖xe1

1340

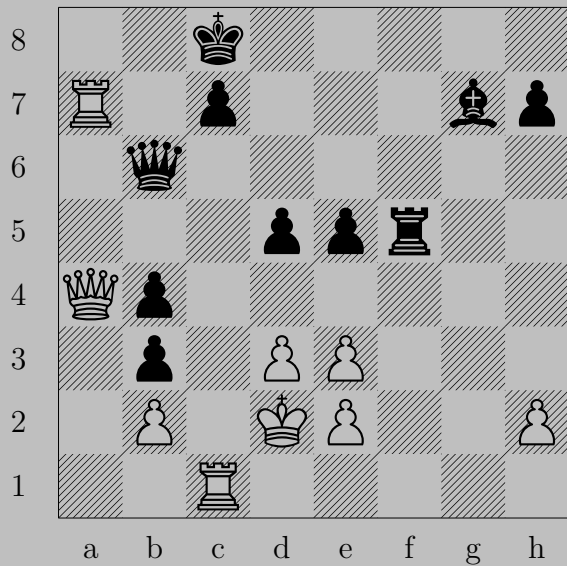


1340

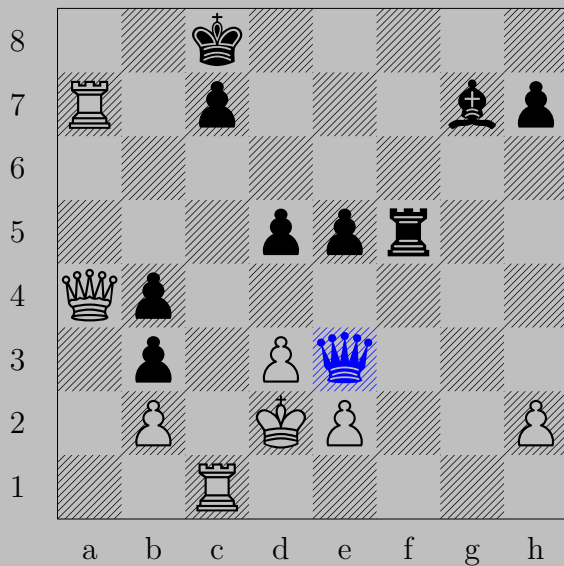


- ♔g1+
 ♔xg1, ♖e1

1341



1341



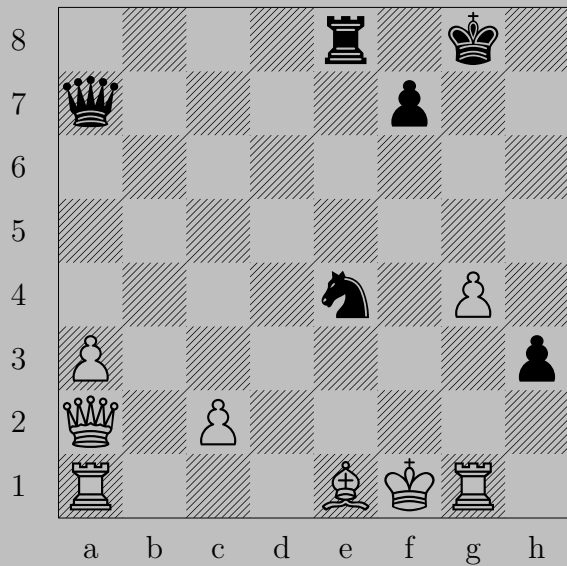
- ♔xe3+
♔xe3, ♗h6

1342

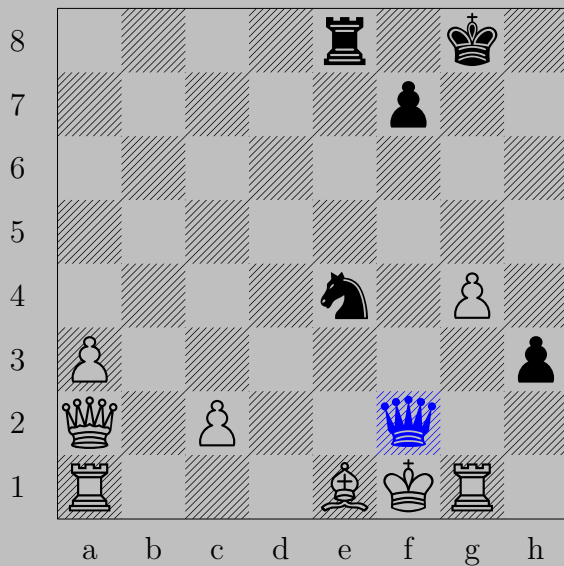


- ♚xg3+
♚xg3, ♙c7

1343

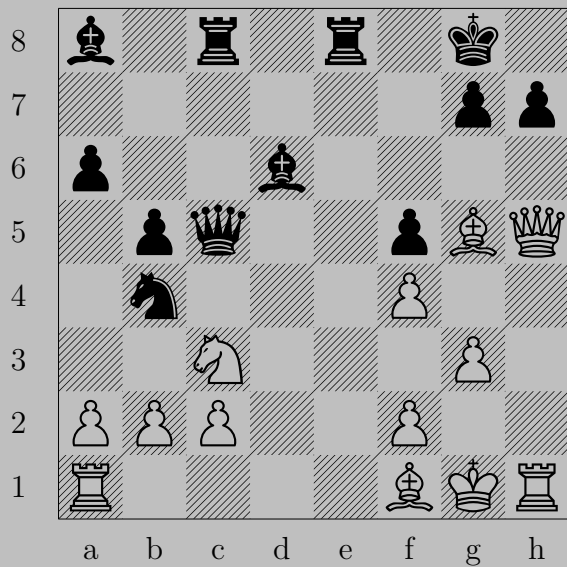


1343

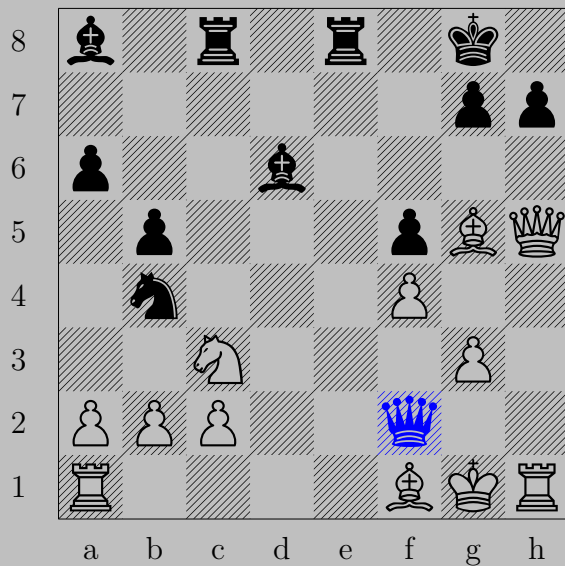


- ♔f2+
♙xf2, ♘d2

1344

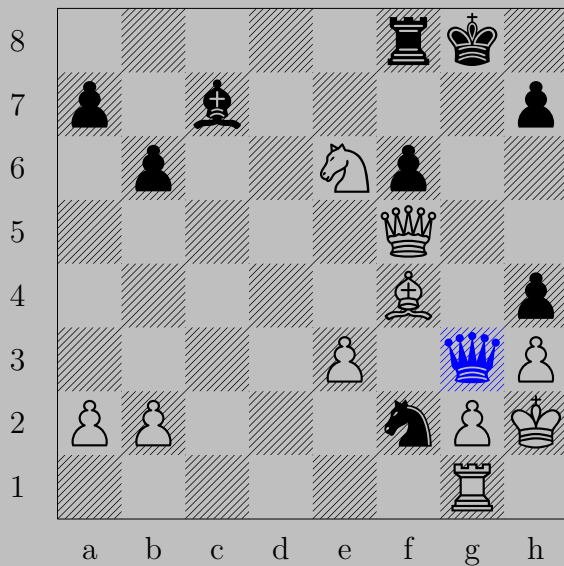


1344



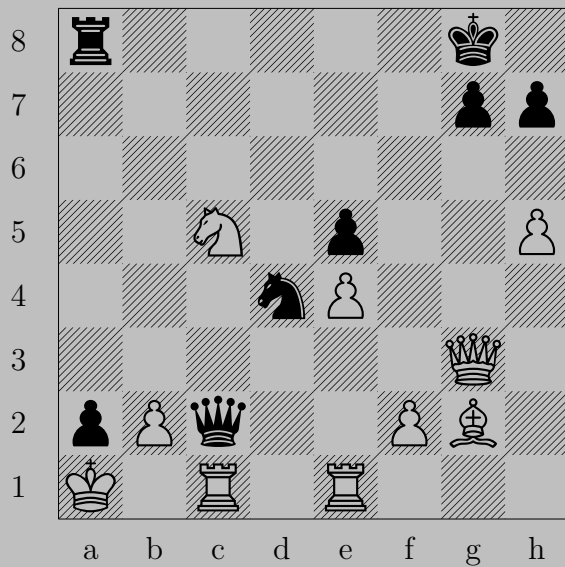
- ♔xf2+
 ♕xf2, ♘c5

1345



- ♔g3+
♙xg3, ♘xg3

1346

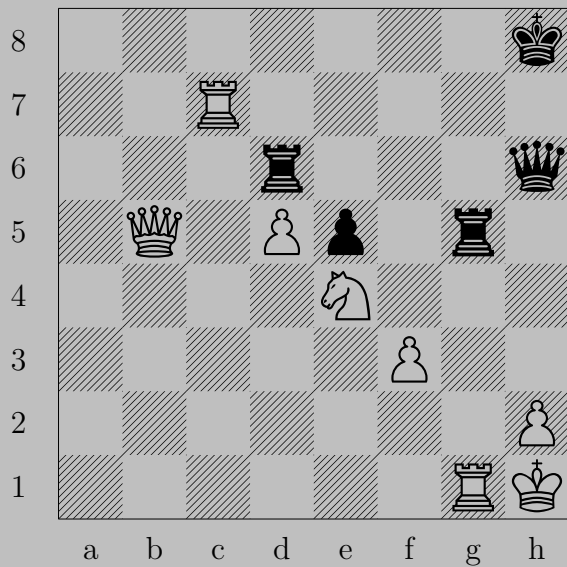


1346



- ♔b1+
♖xb1, ♘c2

1347



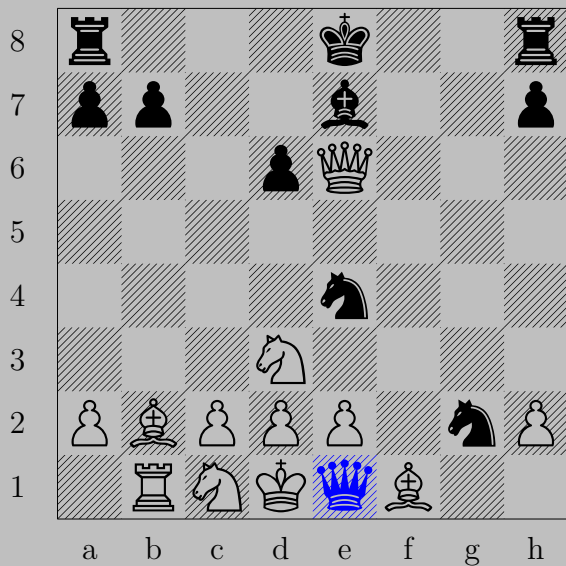
1347



- ♚xh2+
♔xh2, ♖h6

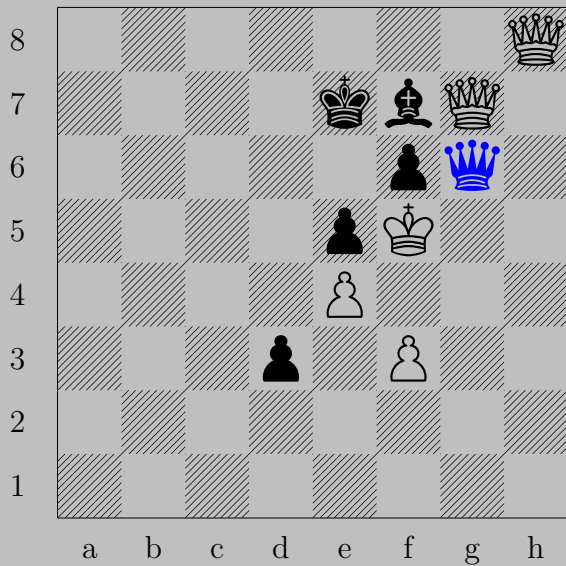


1348



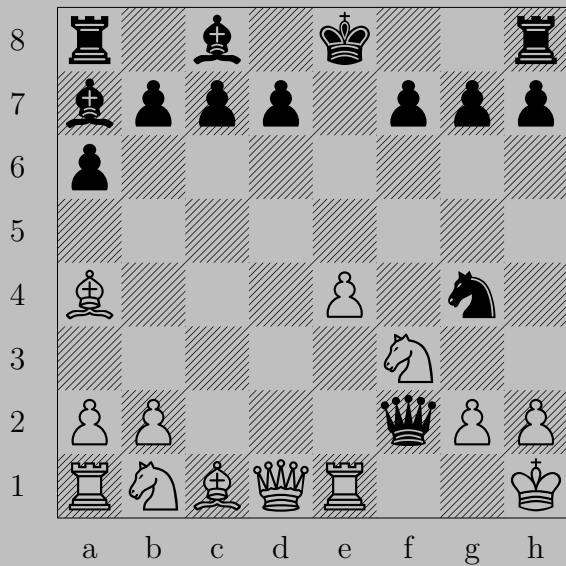
- ♔e1+
♘xe1, ♘f2

1349



- ♔g6+
♔xg6, ♕e6

1350



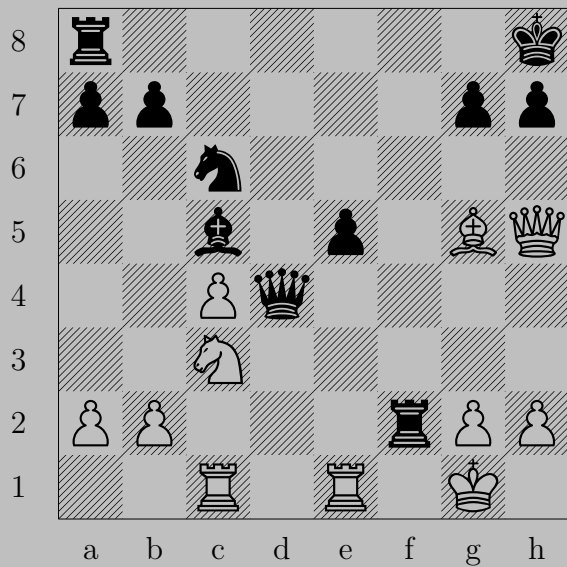
1350



- ♔g1+

♞xg1 or ♖xg1, ♞f2

1351

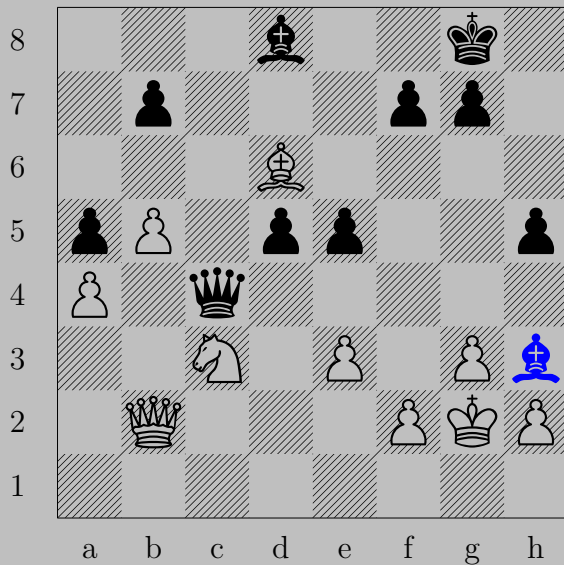


1351



- ♖f1+
♔xf1, ♕f2

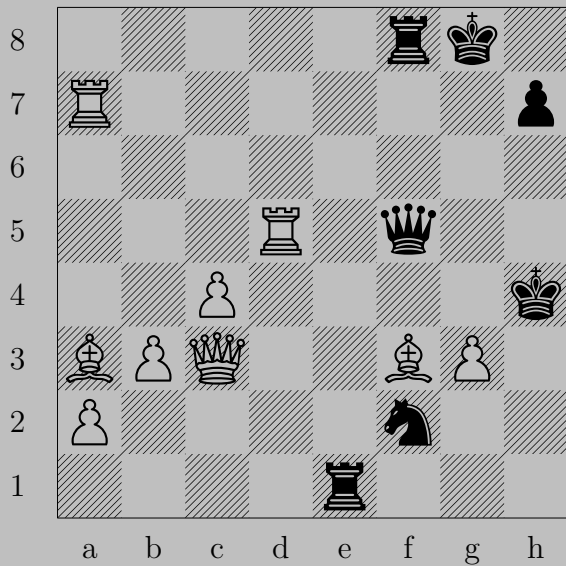
1352



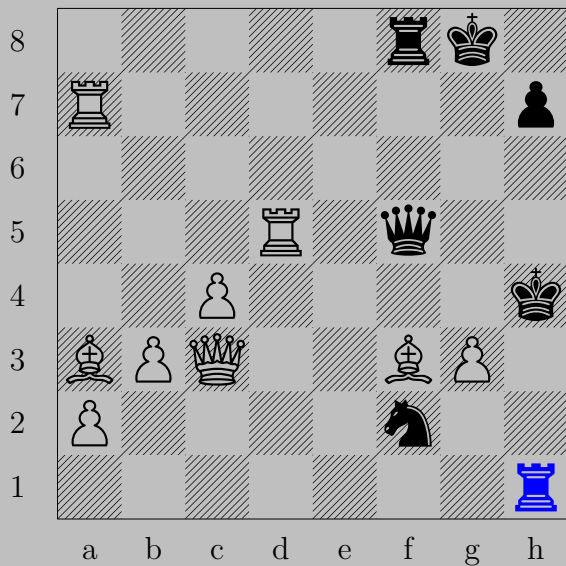
- ♘h3+

If ♙xh3 or ♙h1, ♚f1. If ♙f3, ♚g4.

1353



1353



- ♖h1+
♔xh1, ♕g4

1354



(see [1363](#))

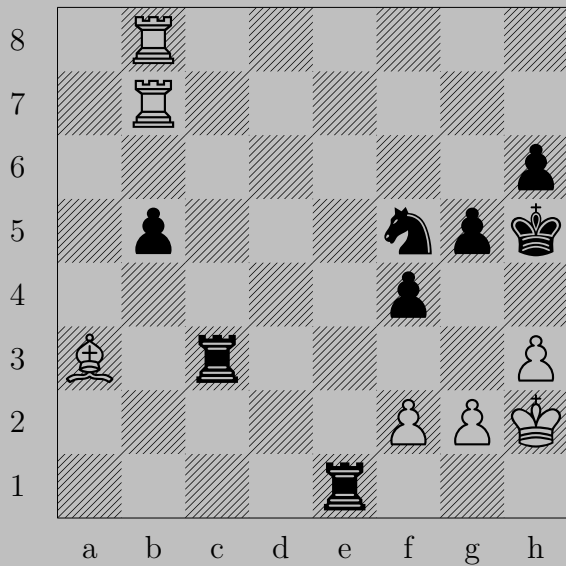
1354



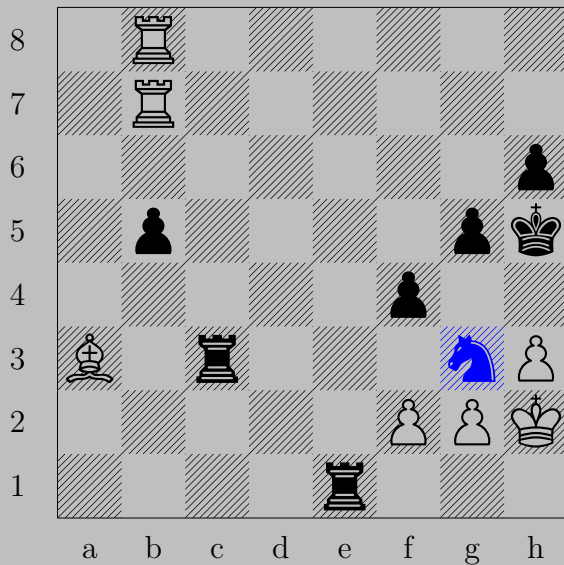
- Ng3+

Pxg3 or Kg1 , Qe1

1355



1355



– Ng3

If $\text{P}\times\text{g3}$, $\text{P}\times\text{g3}$.

Otherwise, Rh1 .

1356

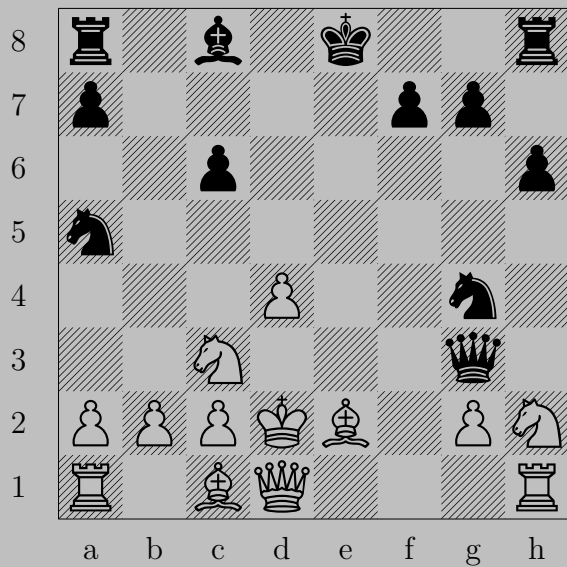


1356

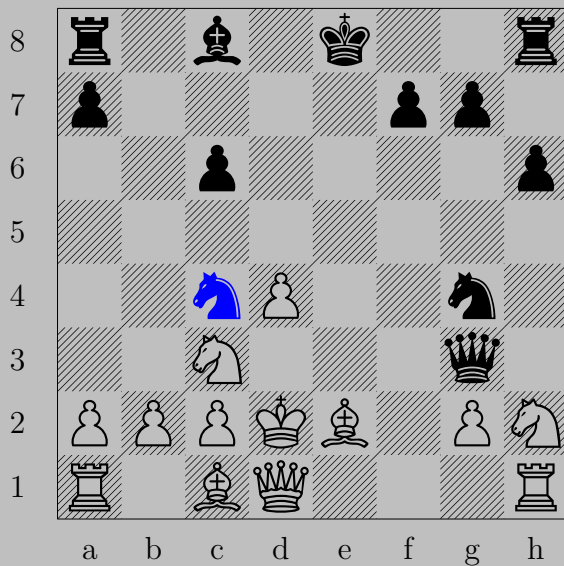


- ♖xa3+
♔xa3, ♕b3

1357

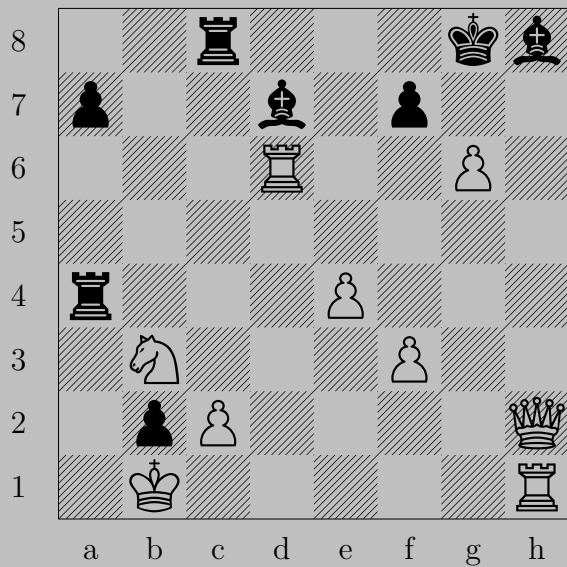


1357

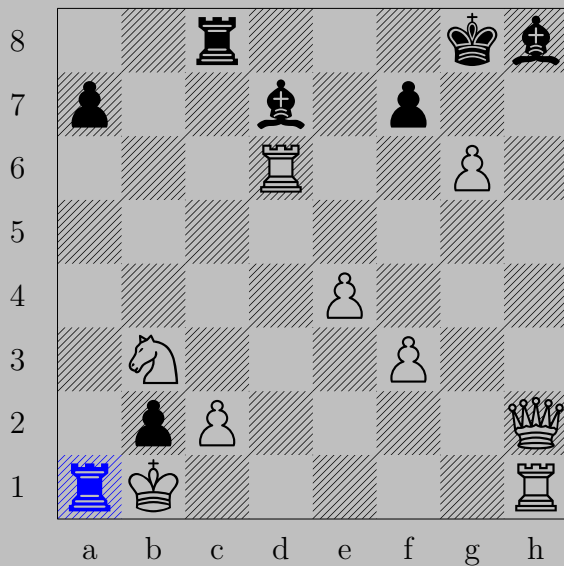


- ♞c4+
♔xc4, ♚e3

1358



1358



- ♖a1+

♞xa1, ♙xa1(♔)

1359



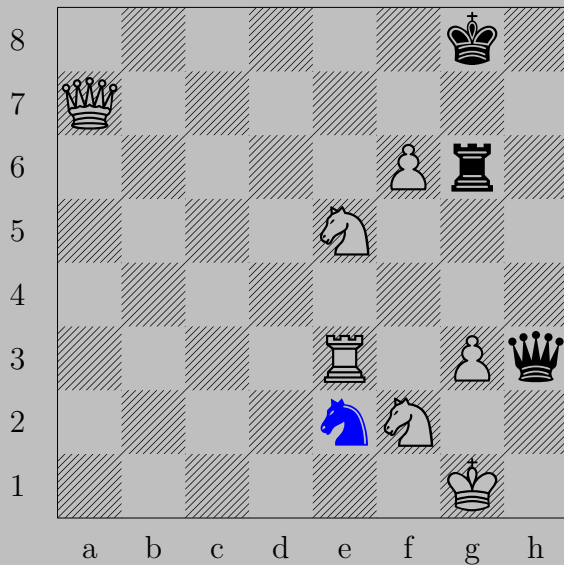
1359



- ♖c4+

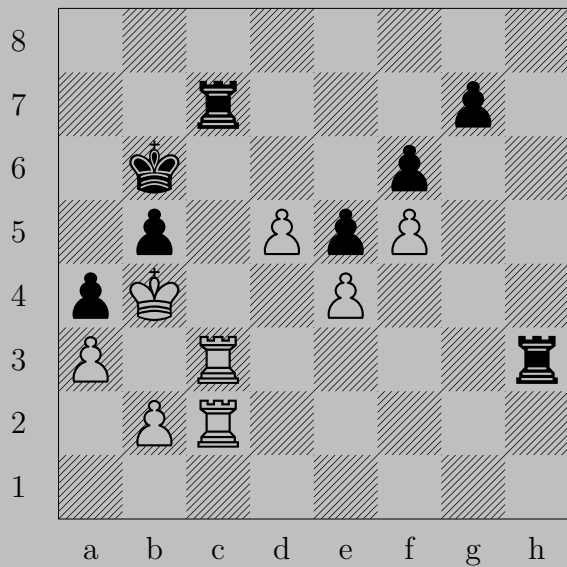
♔xe4, ♚e3

1360

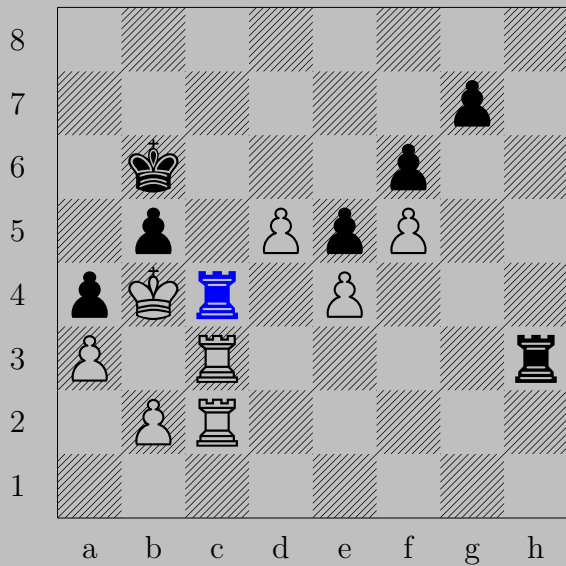


- ♞e2

♖xe2, ♖xg3

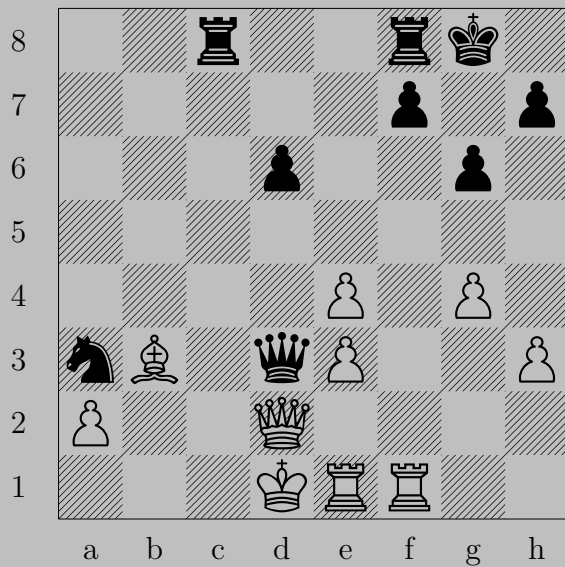


1361

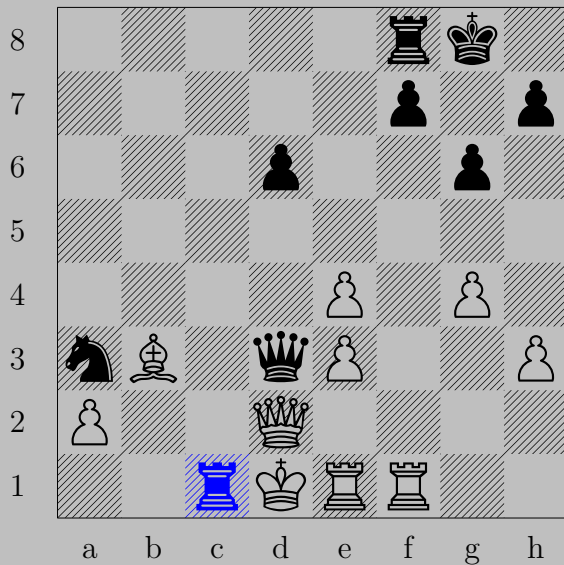


- ♖c4+
♖xc4, ♖b3

1362

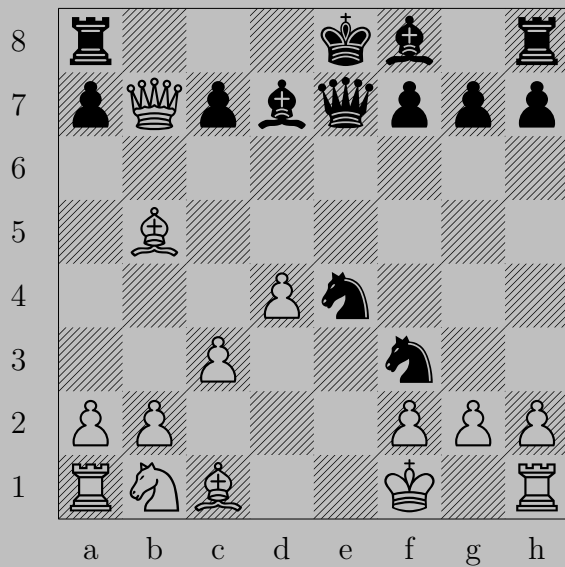


1362



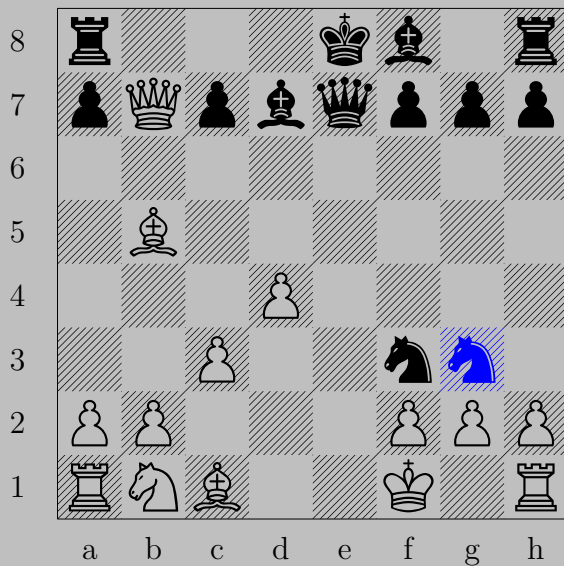
- ♖c1+
♔xc1, ♚b1

1363



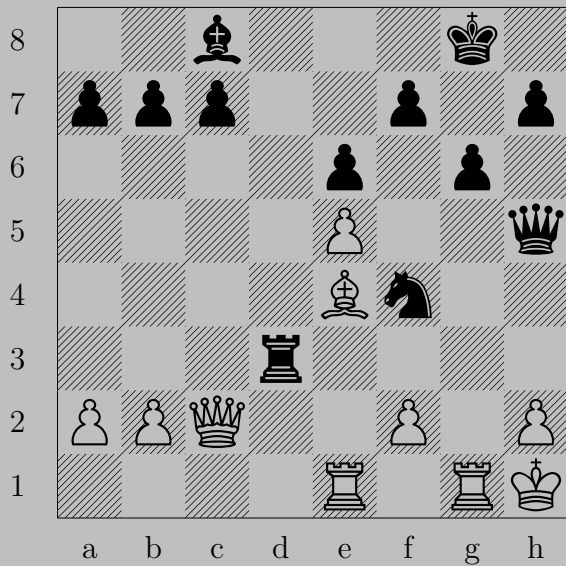
(see [1354](#))

1363



- ♘g3+
♙xg3, ♚e1

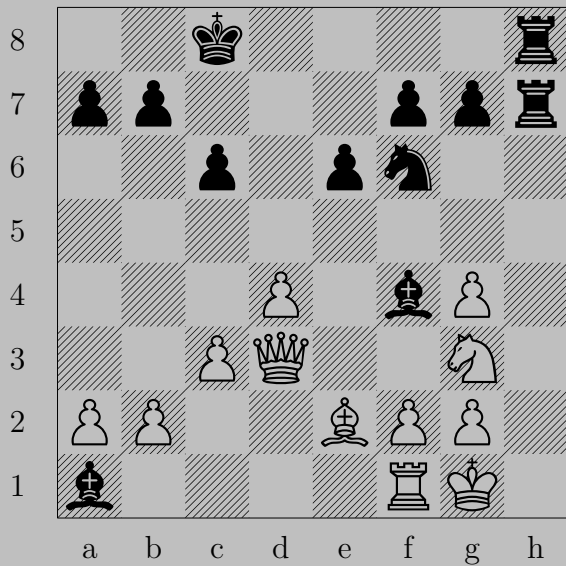
1364



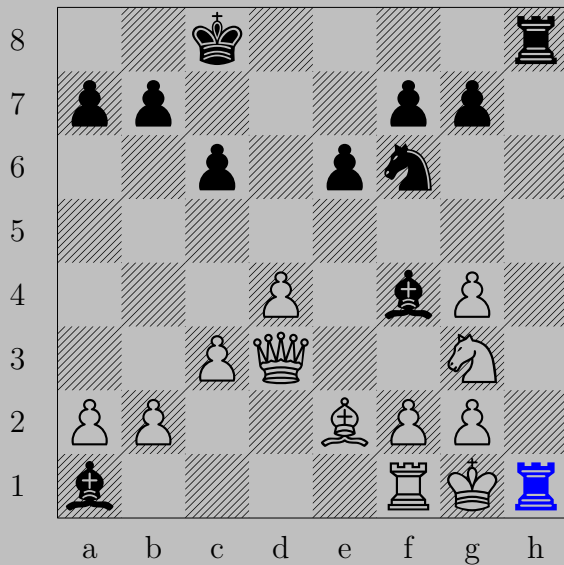
1364



- ♔xh2+
 ♕xh2, ♖h3

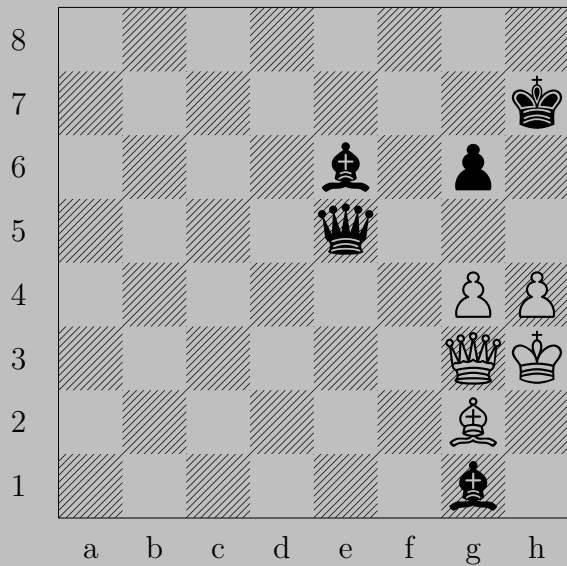


1365



- ♖h1+
♘xh1, ♕h2

1366

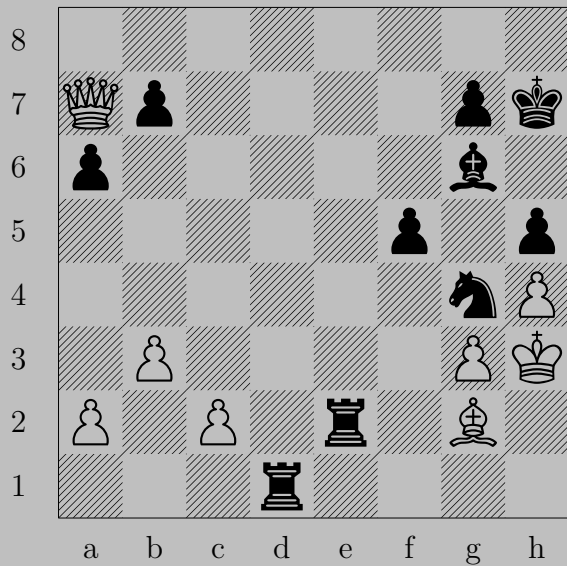




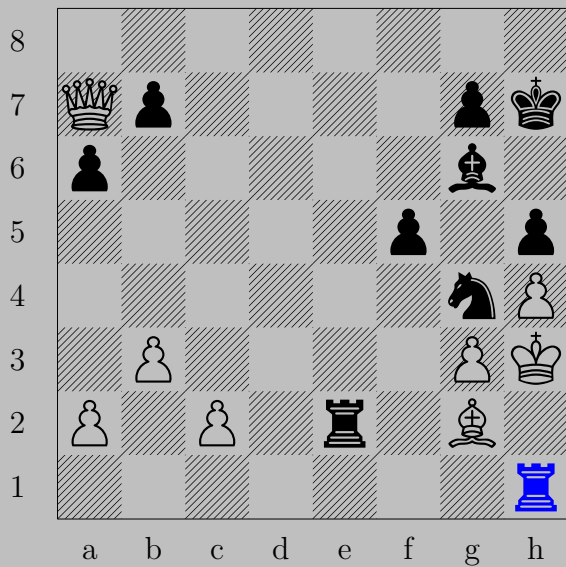
– ♔×g4+

If ♚×g4, ♛h2. If ♔×g4, ♛f5.

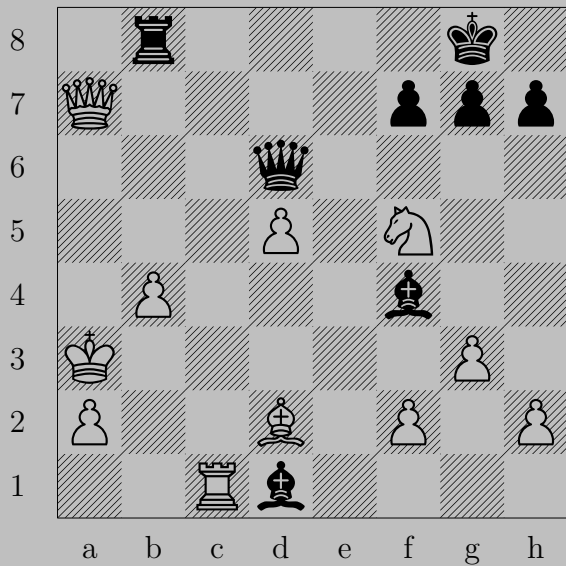
1367



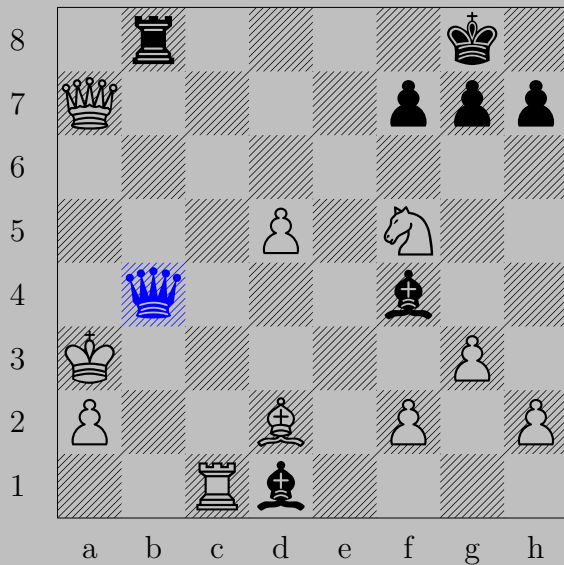
1367



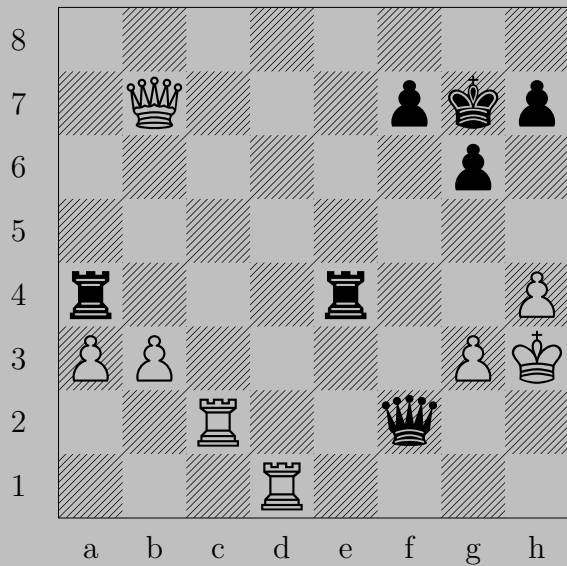
- ♖h1+
♔xh1, ♖h2



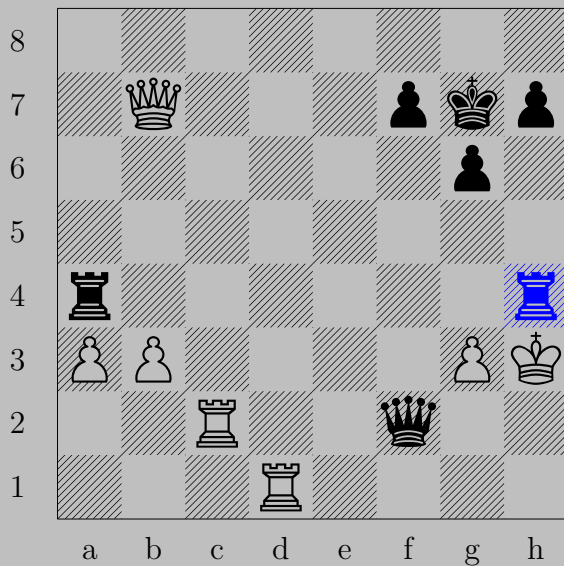
1368



- ♔xb4+
♗xb4, ♗xc1

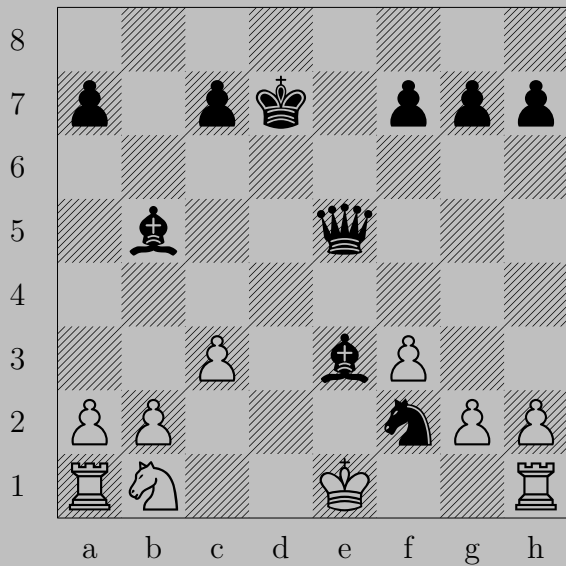


1369

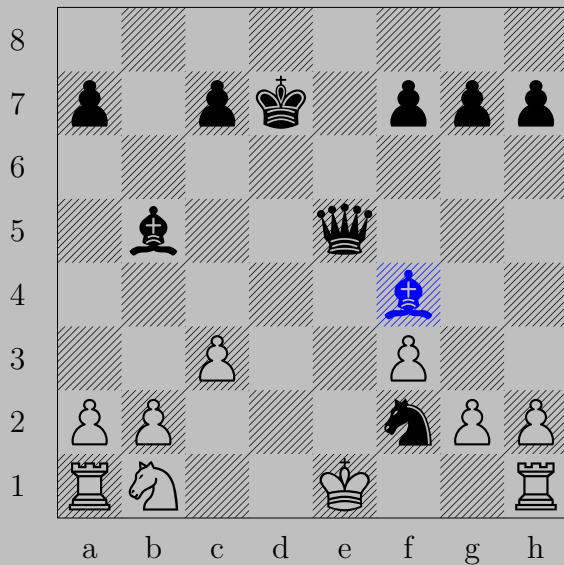


– ♖xh4+
♙xh4, ♖xh4

1370

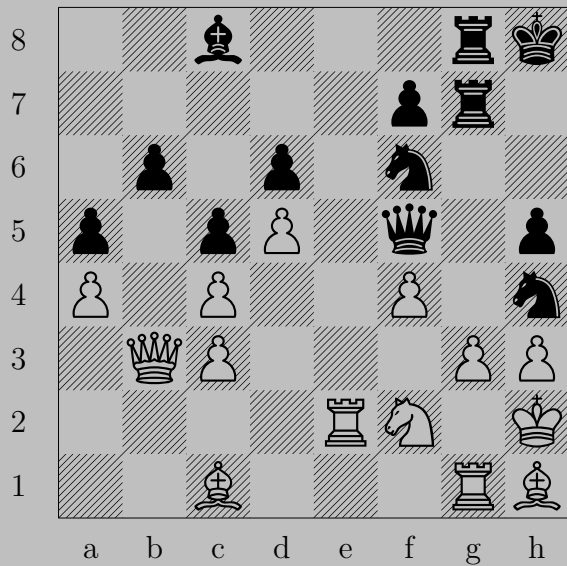


1370



- ♘f4+
♔xf2, ♚e3

1371

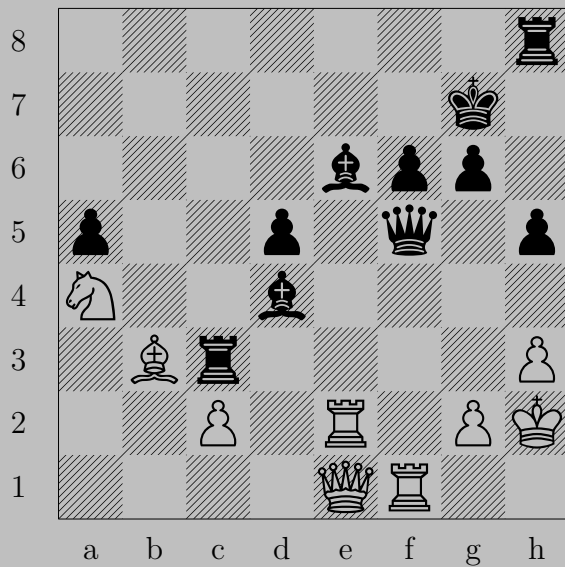


1371

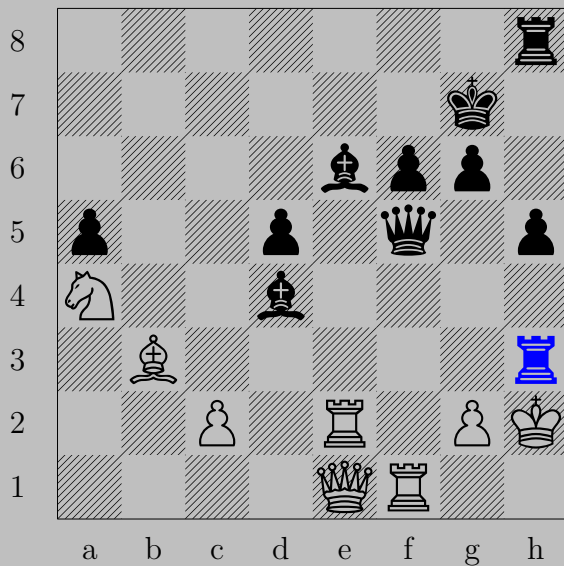


- ♔xh3+
 ♘xh3, ♘g4

1372

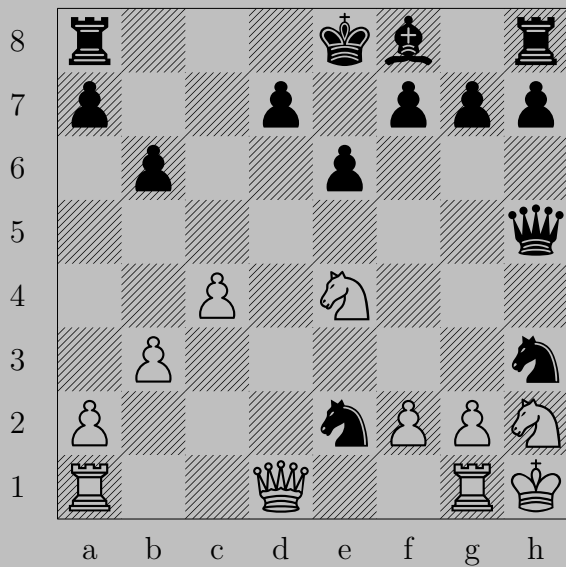


1372



- ♖xh3+
 ♘xh3, ♙xh3

1373

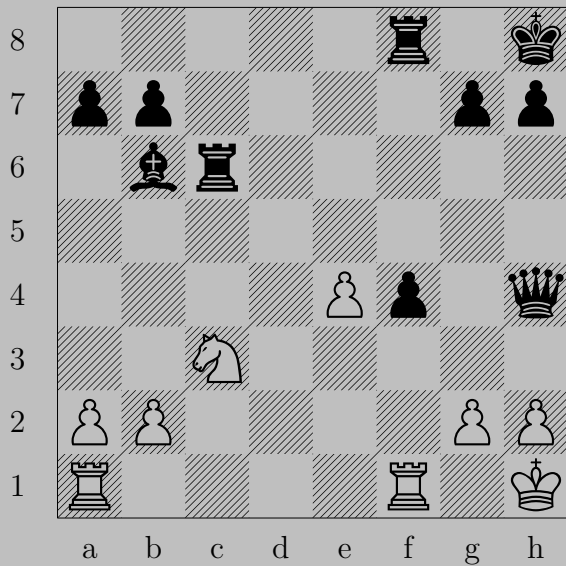


1373



- Nxf2+
Nxf2, Ng3

1374

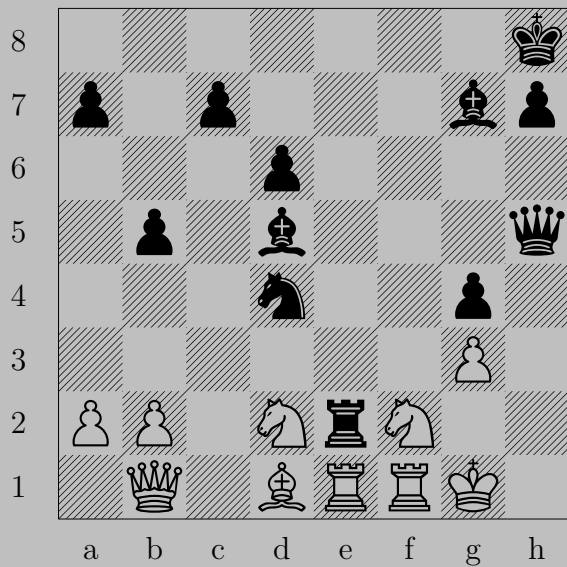


1374

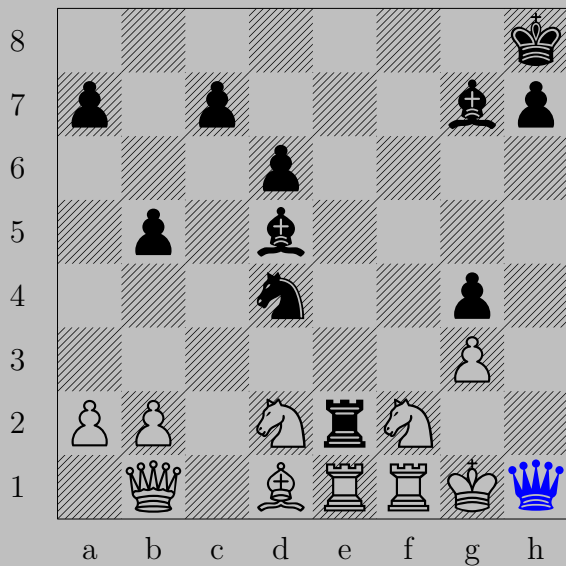


- ♔xh2+
♔xh2, ♖h6

1375

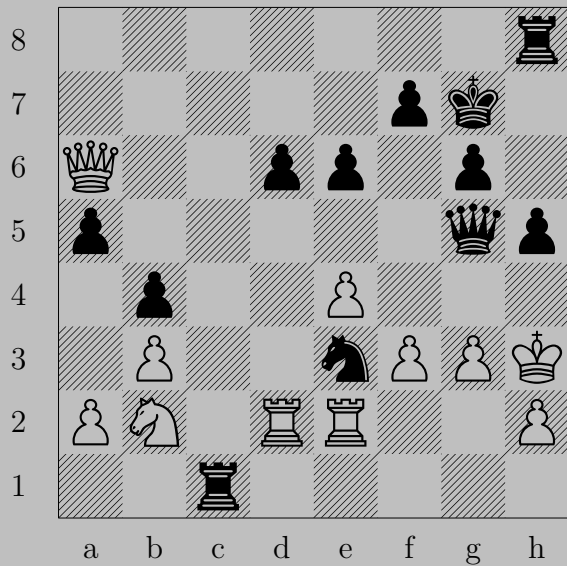


1375

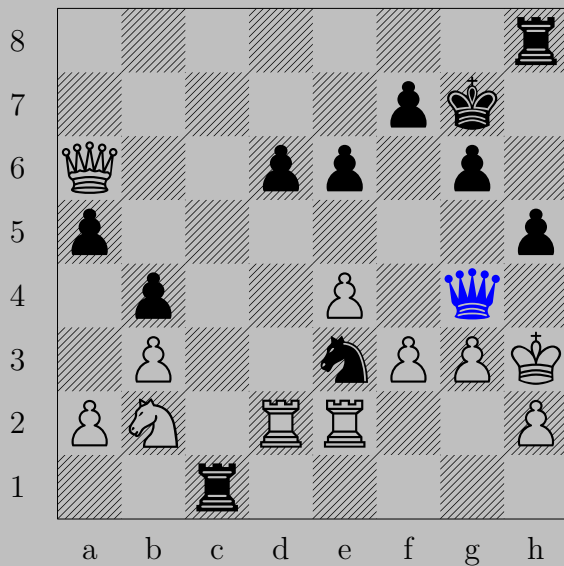


- ♔h1+
♞xh1, ♖g2

1376

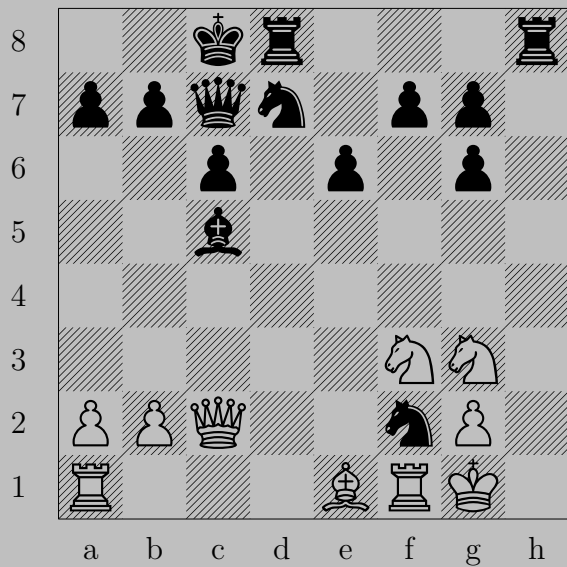


1376

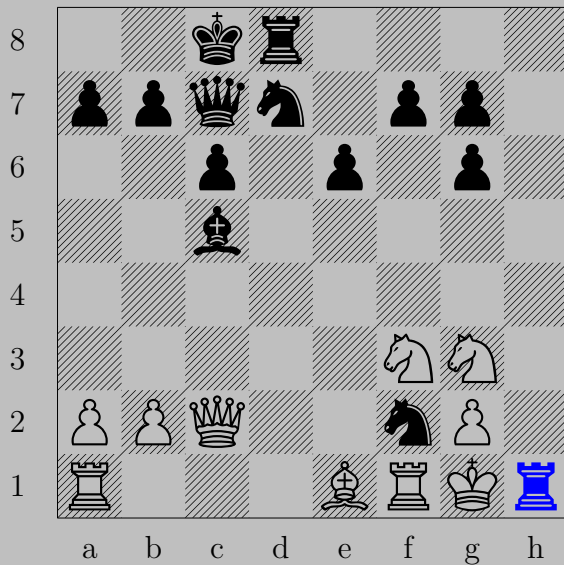


- ♔g4+
♙xg4, ♘xg4

1377



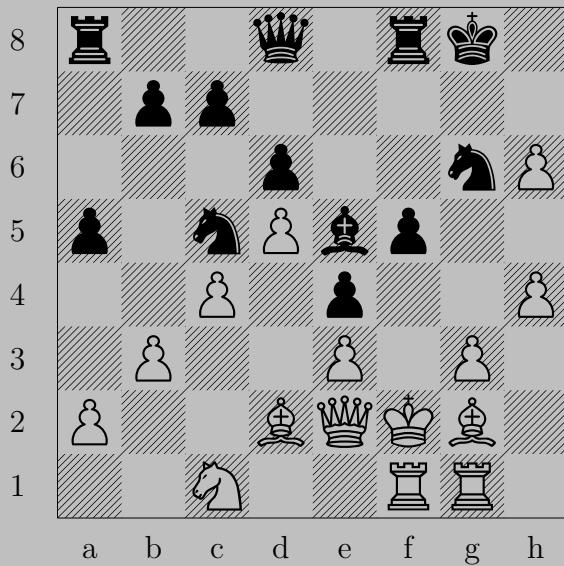
1377



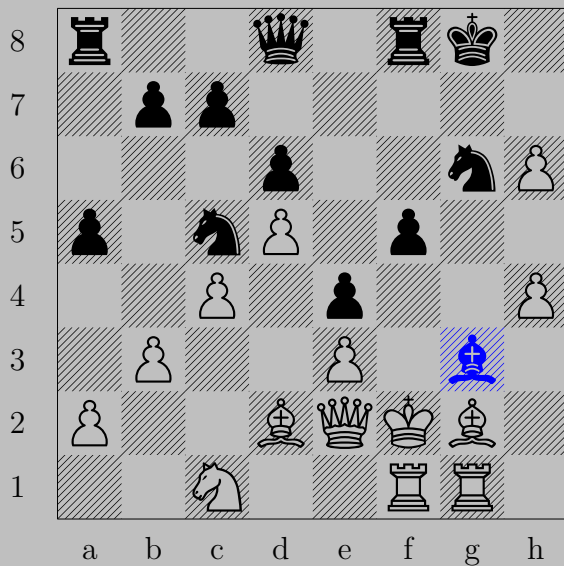
- ♖h1

♞xh1, ♞h3

1378



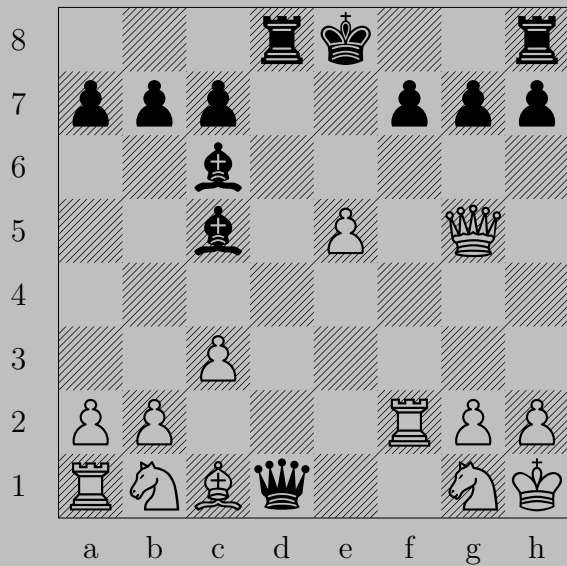
1378



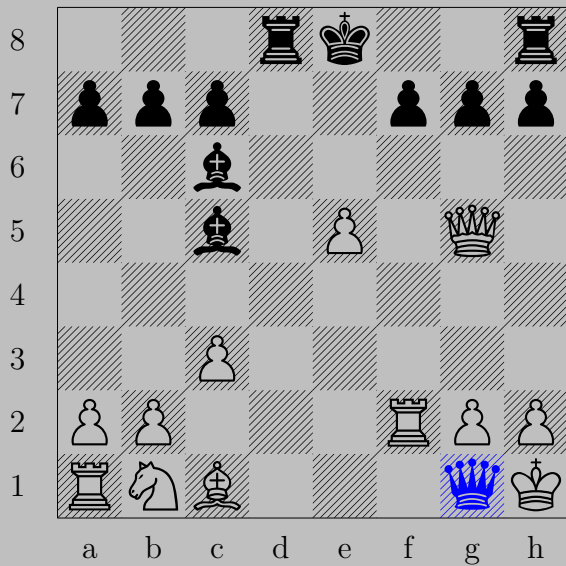
- ♖xg3+

♔xg3, ♚xh4

1379

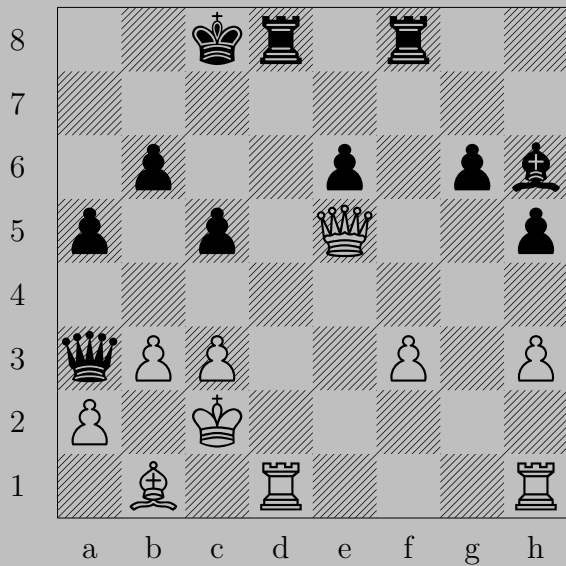


1379



- ♔xg1+
♔xg1, ♖d1

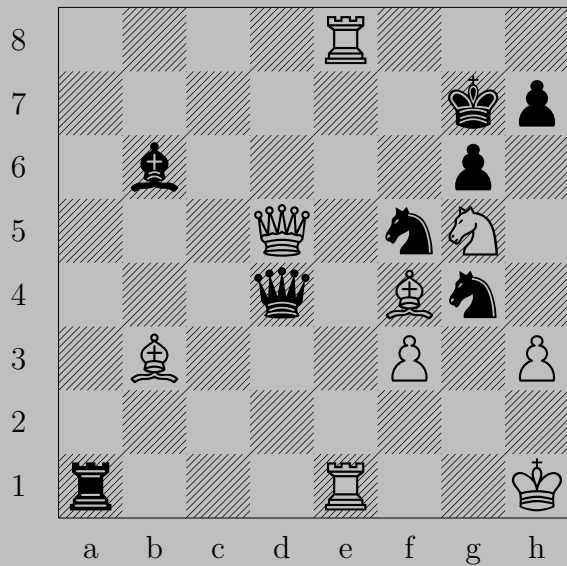
1380



1380

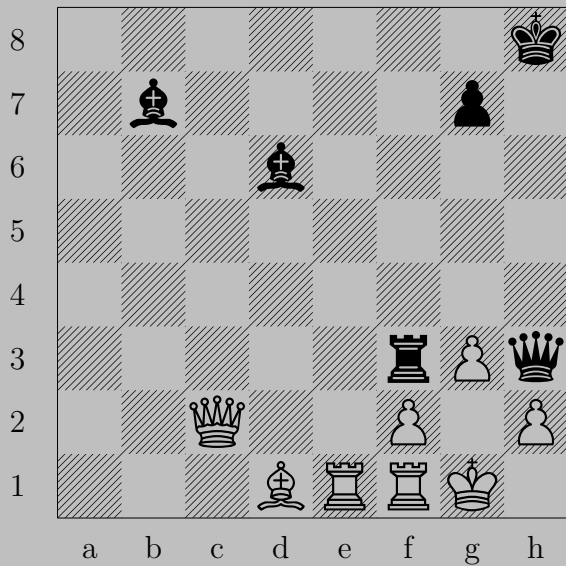


- ♔c1+
♖xc1, ♖d2

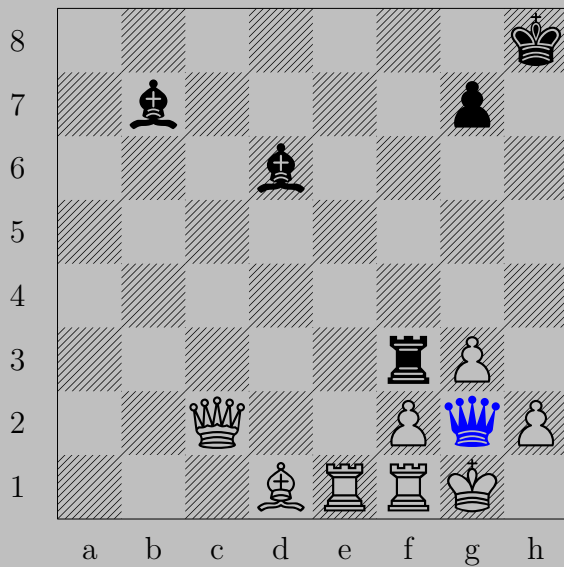




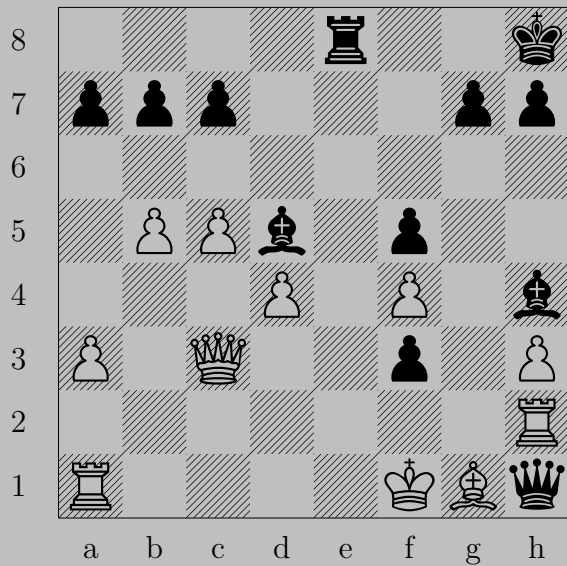
– ♔g1+
 ♖xg1, ♗xg1



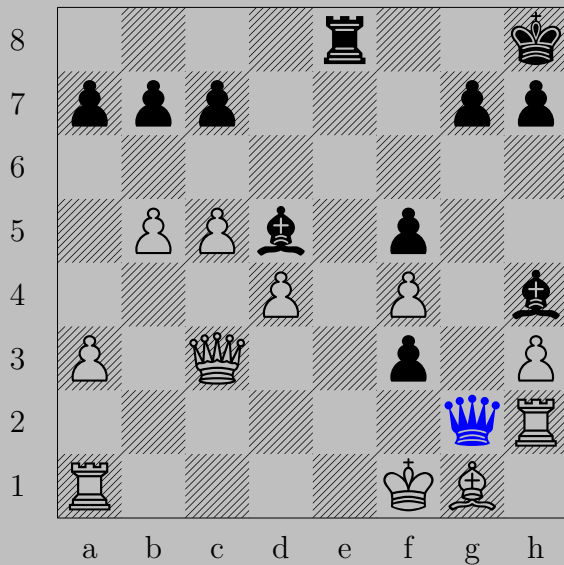
1382



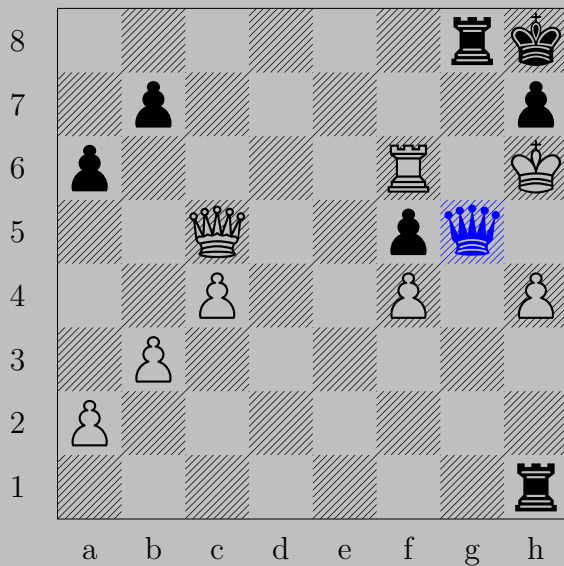
- ♔g2+
 ♔×g2, ♖×g3



1383

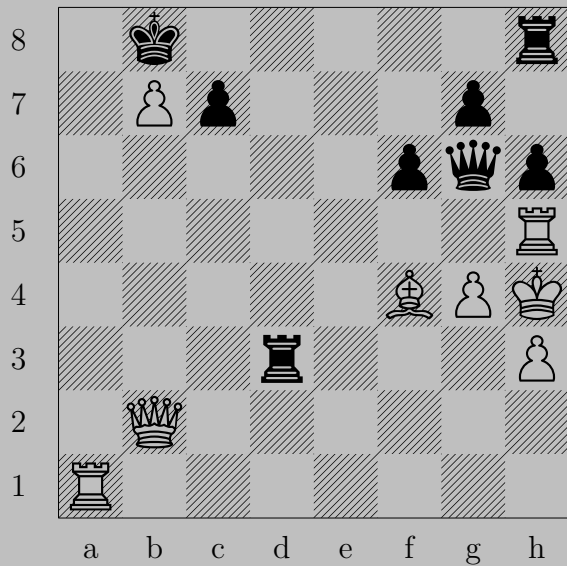


- ♔g2+
 ♖xg2, ♕xg2

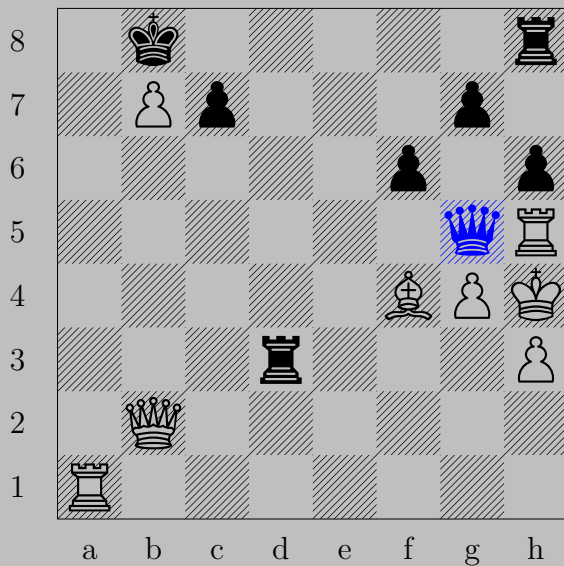


- ♔×g5+
 ♖(f4)×g5, ♖×h4

1385

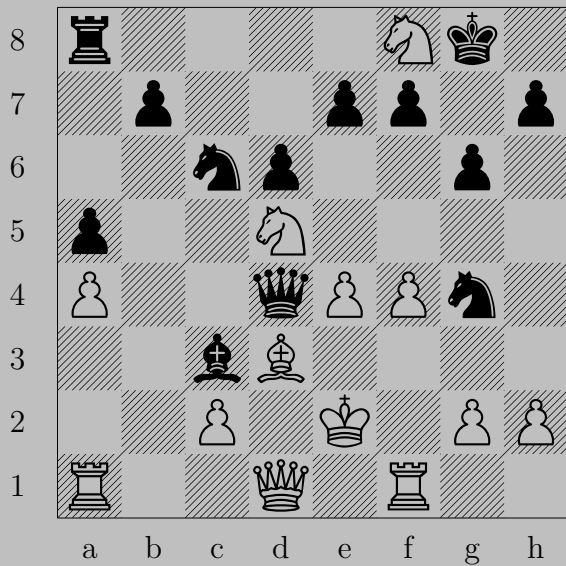


1385

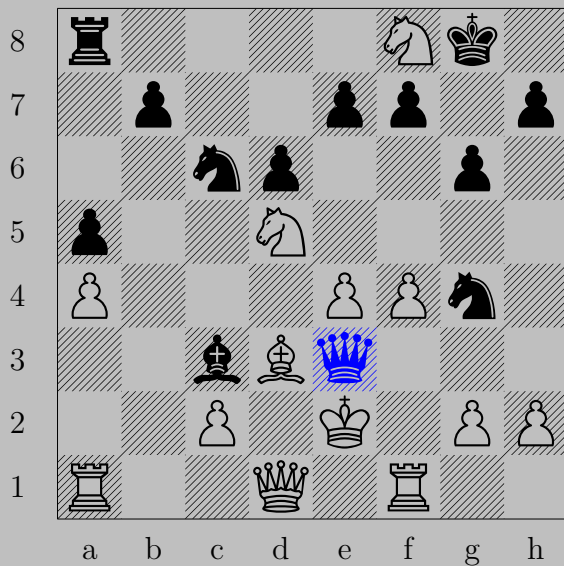


- ♔g5+

♙xg5 or ♖xg5, ♜(h6)xg5



1386



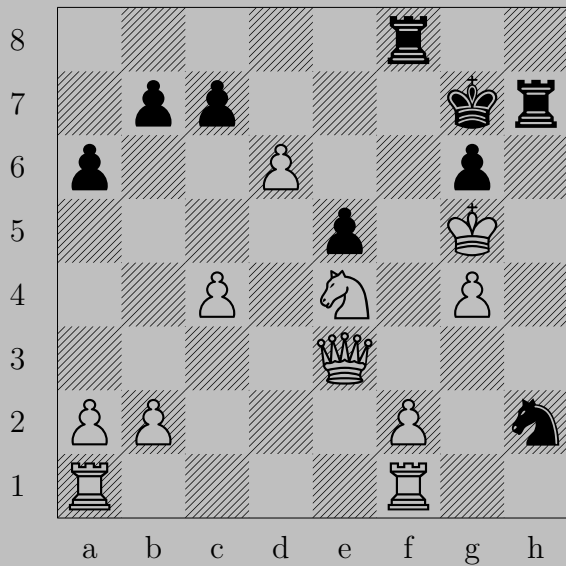
- ♔e3+
♘xe3, ♘d4

1387



- ♚xd2+
♔xd2, ♖e3

1388

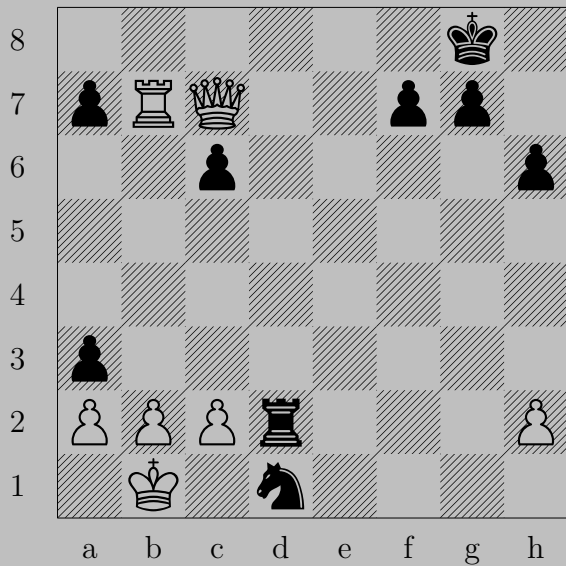


1388

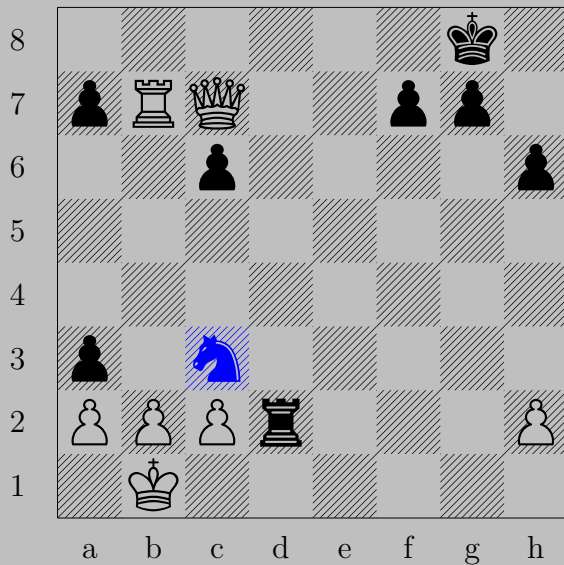


- ♖f5+
♙×f5, ♖h5

1389



1389



- ♞c3+

♙xc3 or ♕c1 or ♕a1, ♖d1

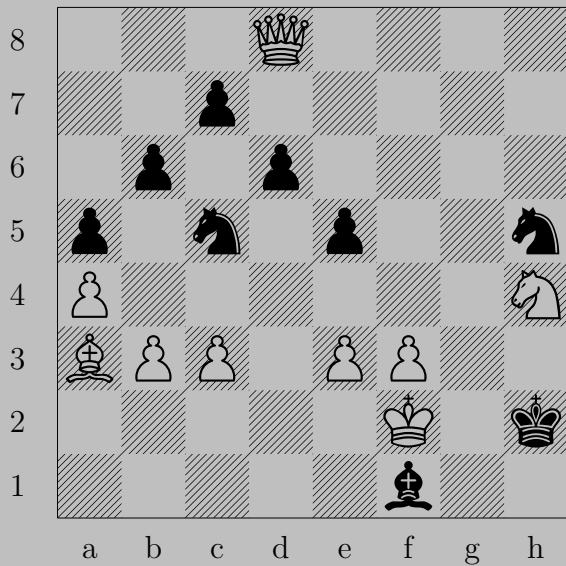
1390



- ♞f4+

If ♞x4, ♔h1. If ♔x4 or ♔h2, ♔xg2.

1391

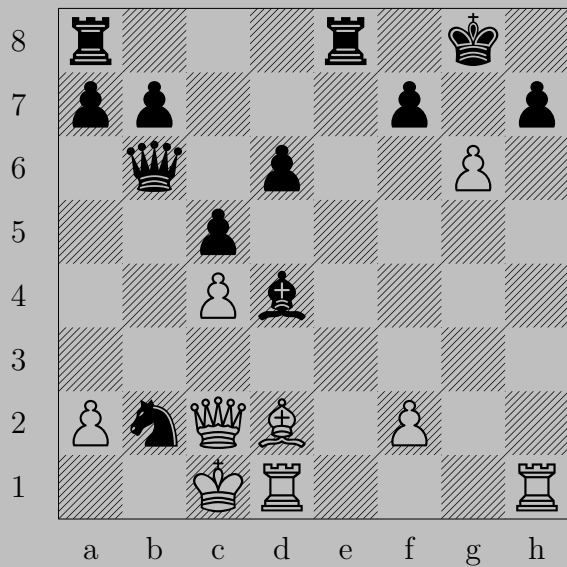


1391

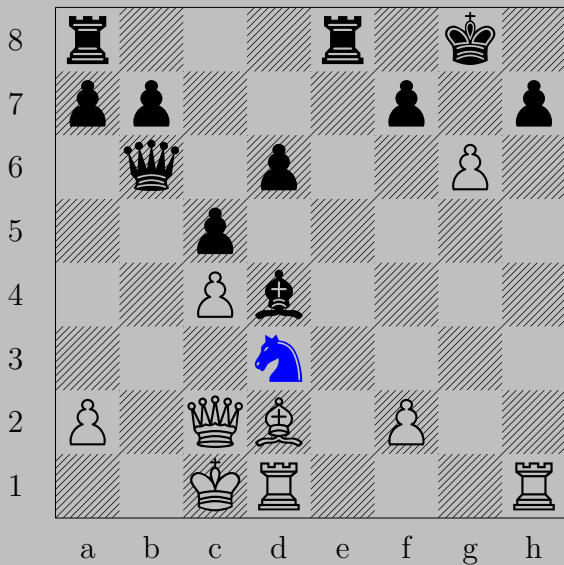


- ♞d3
♔xf1, ♞g3

1392



1392



- ♞d3+

♚xd3, ♚b2

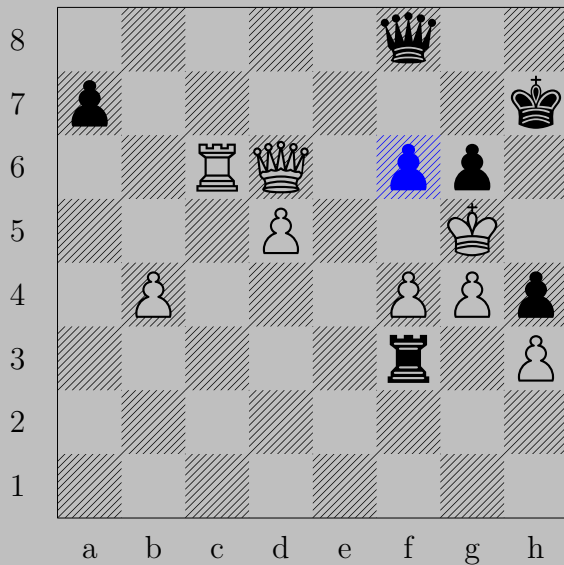
1393



- Rook d1+

Knight x d1 or Knight f1, Queen x g2

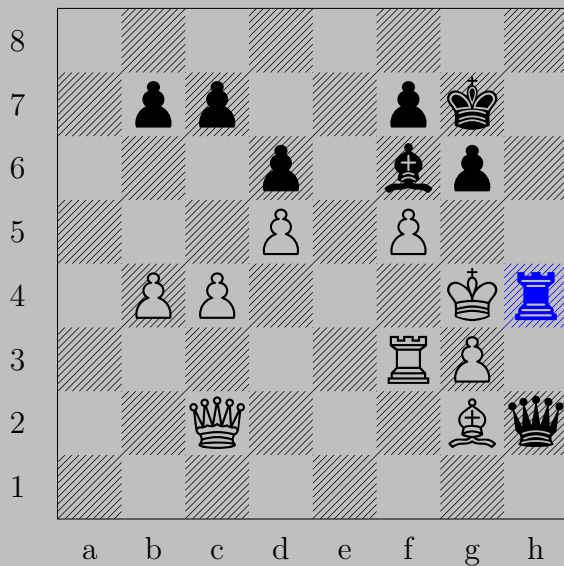
1394



- ♘f6+

♚xf6 or ♔xh4, ♚h6

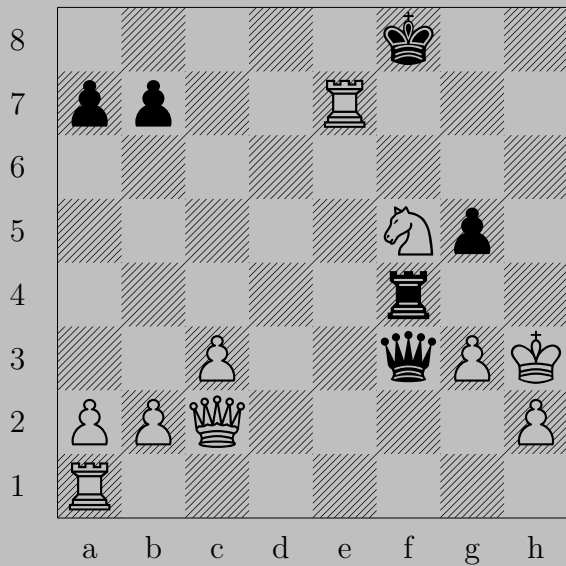
1395



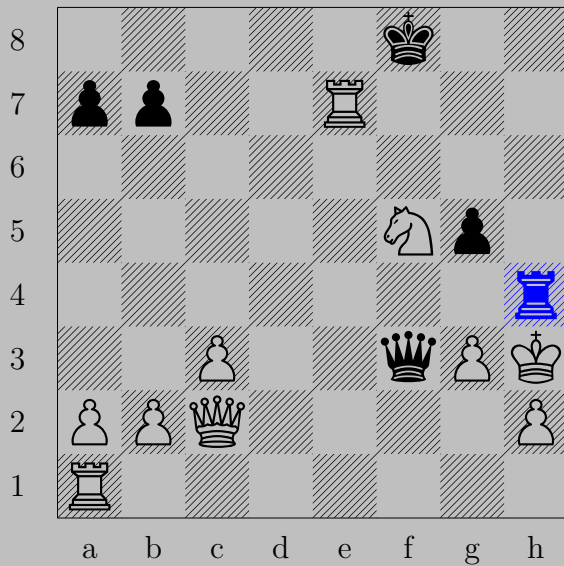
- ♞h4+

♙xh4, ♔xh4

1396



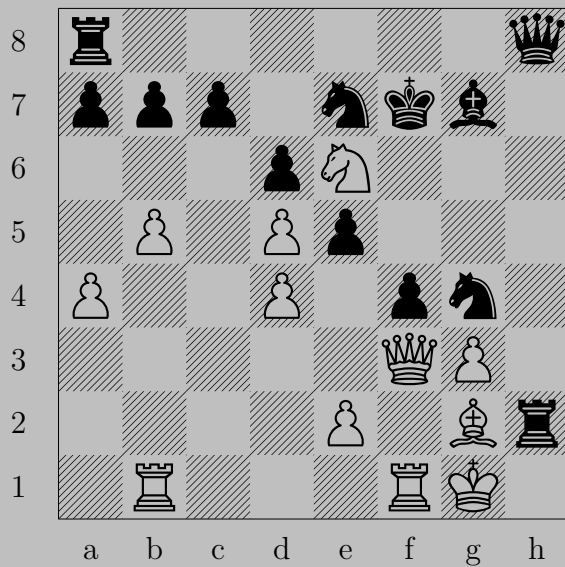
1396



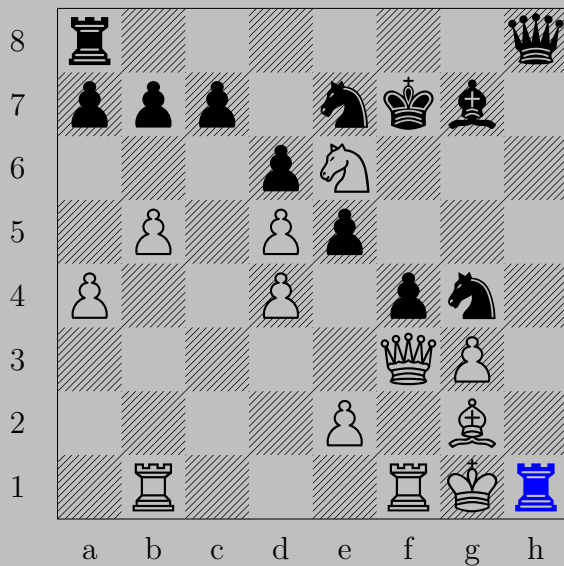
- ♖h4+

♞xh4, ♙g4

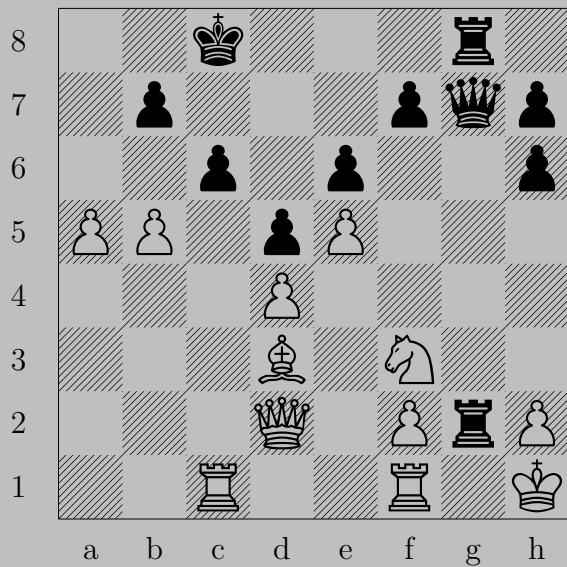
1397



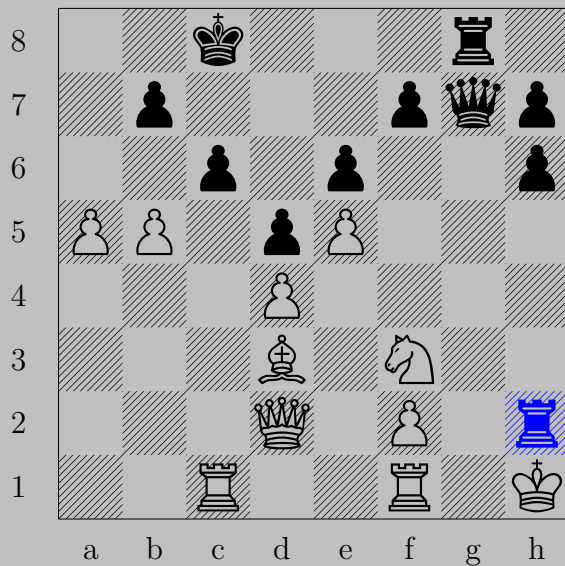
1397



- ♖h1+
♔xh1, ♚h2



1398



- ♖xh2+

♘xh2 or ♔xh2, ♕g2

1399

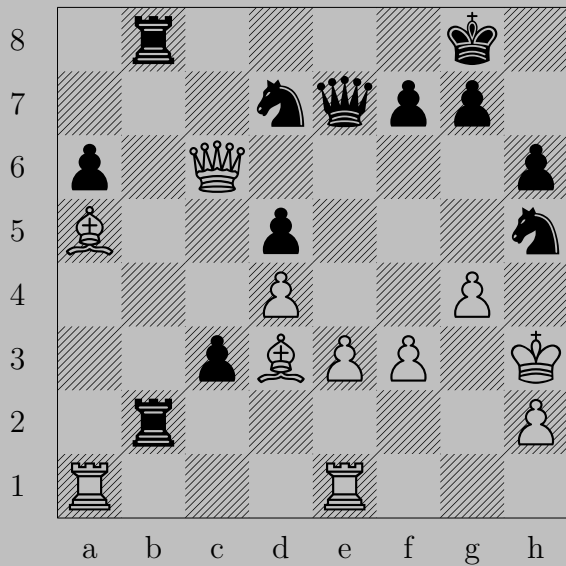


1399

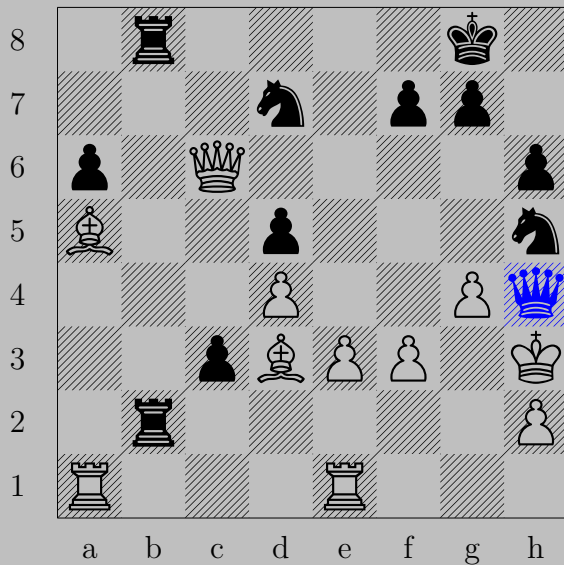


– ♖d1
anything, ♔g2

1400



1400



- ♔h4+
♔xh4, ♖xh2