

# Chess Puzzles

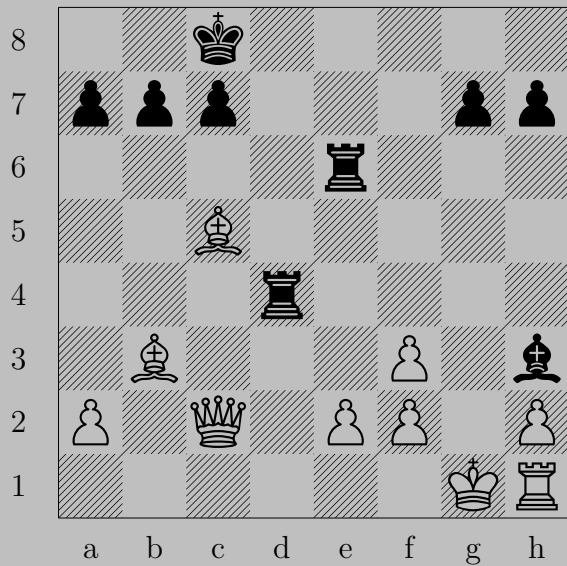
1401-1470

Mate in Two  
Black to Move

László Polgár

## Links

|                      |                      |                      |                      |                      |                      |                      |                      |                      |                      |
|----------------------|----------------------|----------------------|----------------------|----------------------|----------------------|----------------------|----------------------|----------------------|----------------------|
| <a href="#">1401</a> | <a href="#">1402</a> | <a href="#">1403</a> | <a href="#">1404</a> | <a href="#">1405</a> | <a href="#">1406</a> | <a href="#">1407</a> | <a href="#">1408</a> | <a href="#">1409</a> | <a href="#">1410</a> |
| <a href="#">1411</a> | <a href="#">1412</a> | <a href="#">1413</a> | <a href="#">1414</a> | <a href="#">1415</a> | <a href="#">1416</a> | <a href="#">1417</a> | <a href="#">1418</a> | <a href="#">1419</a> | <a href="#">1420</a> |
| <a href="#">1421</a> | <a href="#">1422</a> | <a href="#">1423</a> | <a href="#">1424</a> | <a href="#">1425</a> | <a href="#">1426</a> | <a href="#">1427</a> | <a href="#">1428</a> | <a href="#">1429</a> | <a href="#">1430</a> |
| <a href="#">1431</a> | <a href="#">1432</a> | <a href="#">1433</a> | <a href="#">1434</a> | <a href="#">1435</a> | <a href="#">1436</a> | <a href="#">1437</a> | <a href="#">1438</a> | <a href="#">1439</a> | <a href="#">1440</a> |
| <a href="#">1441</a> | <a href="#">1442</a> | <a href="#">1443</a> | <a href="#">1444</a> | <a href="#">1445</a> | <a href="#">1446</a> | <a href="#">1447</a> | <a href="#">1448</a> | <a href="#">1449</a> | <a href="#">1450</a> |
| <a href="#">1451</a> | <a href="#">1452</a> | <a href="#">1453</a> | <a href="#">1454</a> | <a href="#">1455</a> | <a href="#">1456</a> | <a href="#">1457</a> | <a href="#">1458</a> | <a href="#">1459</a> | <a href="#">1460</a> |
| <a href="#">1461</a> | <a href="#">1462</a> | <a href="#">1463</a> | <a href="#">1464</a> | <a href="#">1465</a> | <a href="#">1466</a> | <a href="#">1467</a> | <a href="#">1468</a> | <a href="#">1469</a> | <a href="#">1470</a> |



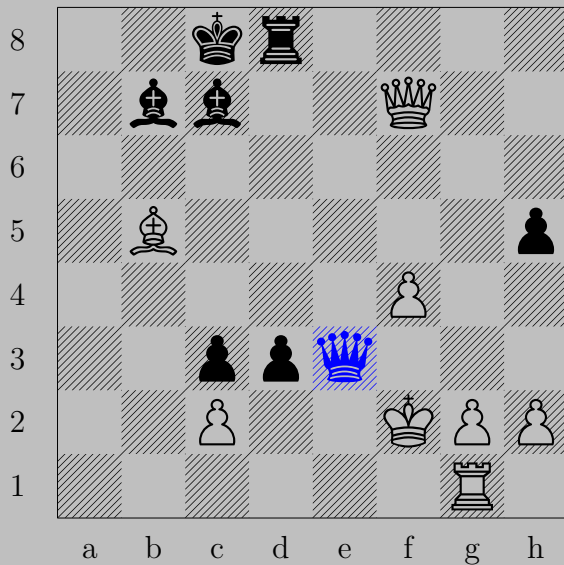
1401



- ♖d1+  
♔xd1, ♖g6



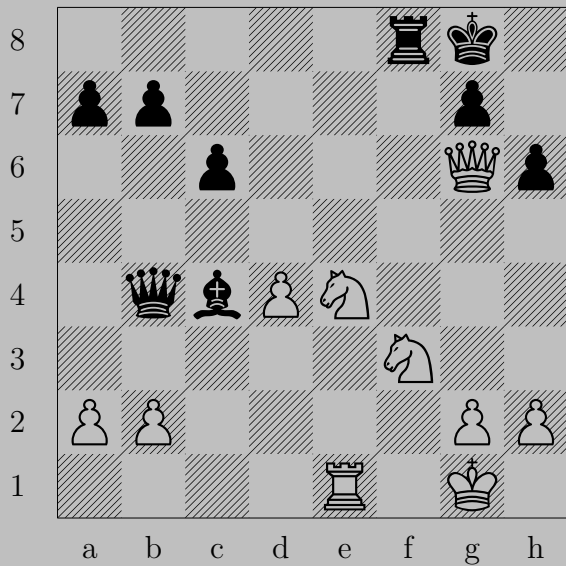
1402



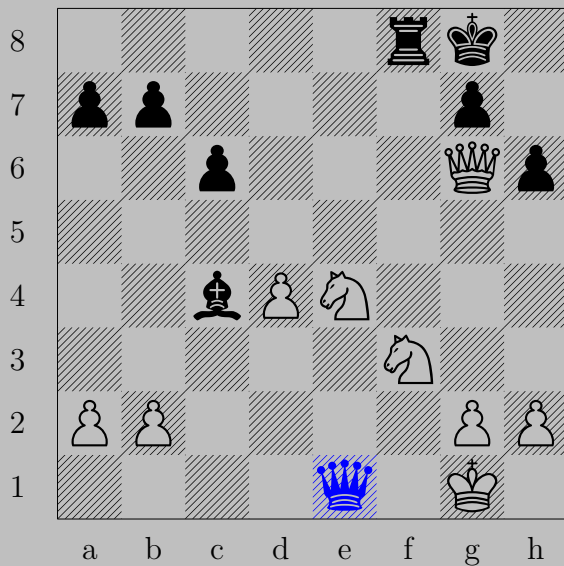
- ♔xe3+

If ♕xe3, ♖b6. If ♕f1, ♔e2.

1403



1403

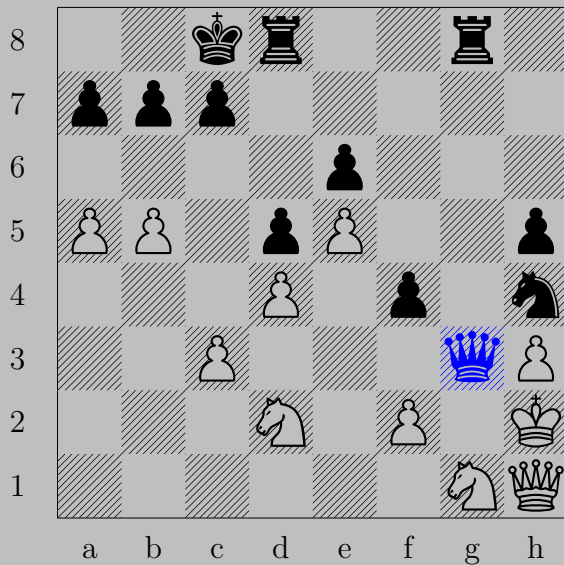


- ♔xe1+  
♘xe1, ♖f1





1404



- ♚g3+  
♙xg3, ♙xg3

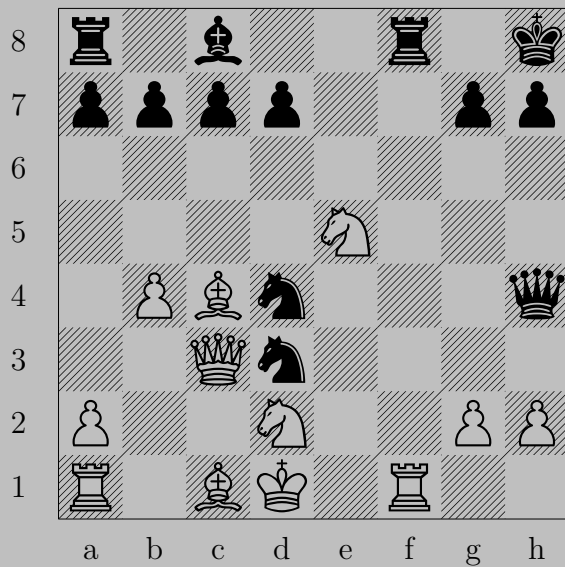
1405



1405



- ♖f3+  
♙×f3, ♙f1

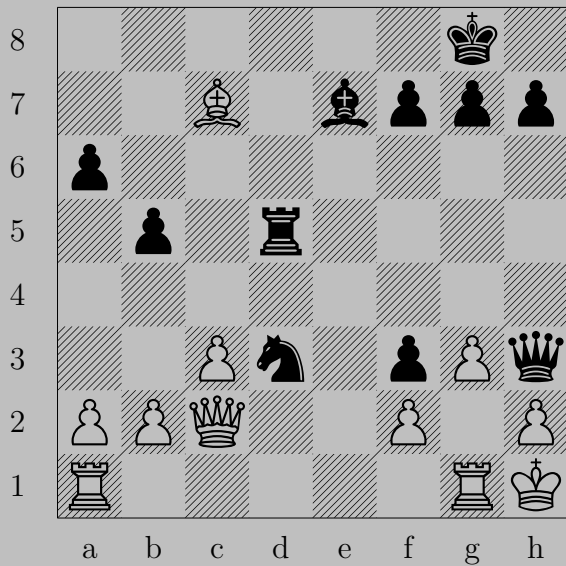


1406



- ♔e1+  
♖xe1, ♘f2

1407

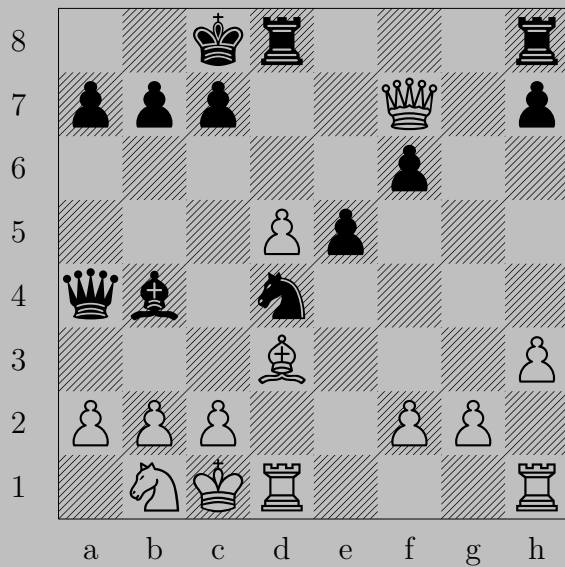


1407

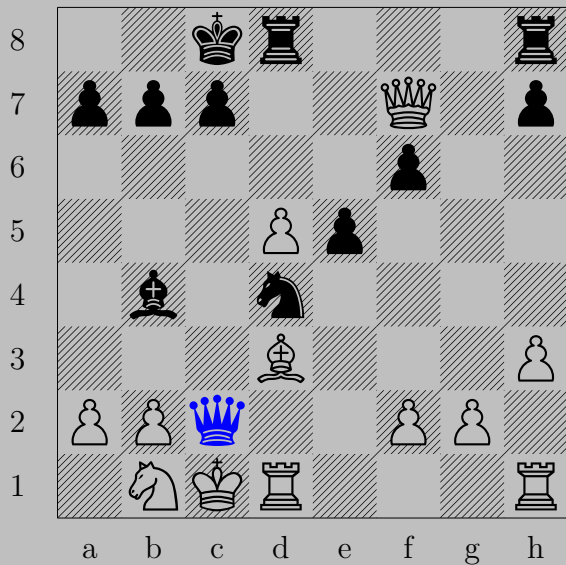


- ♚×h2+  
♔×h2, ♖h5



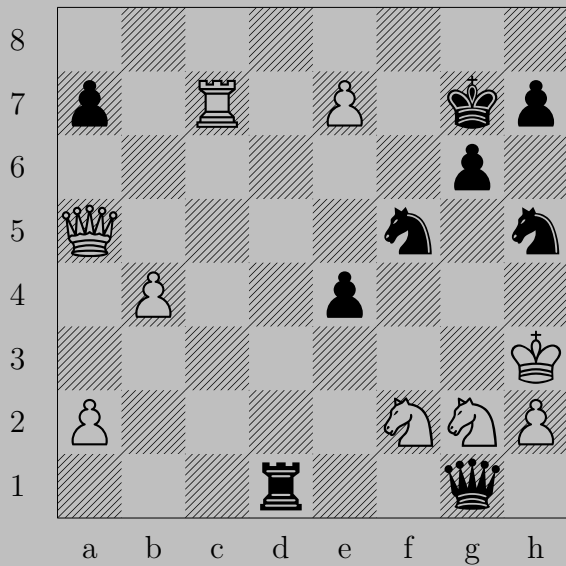


1408

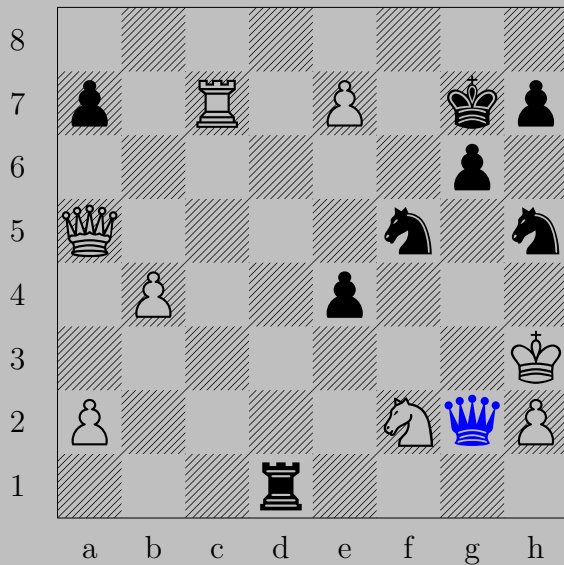


- ♔xc2+  
♙xc2, ♞e2

1409

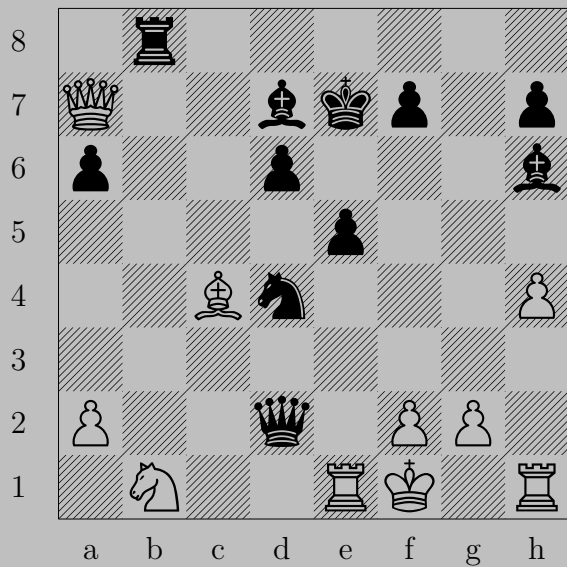


1409

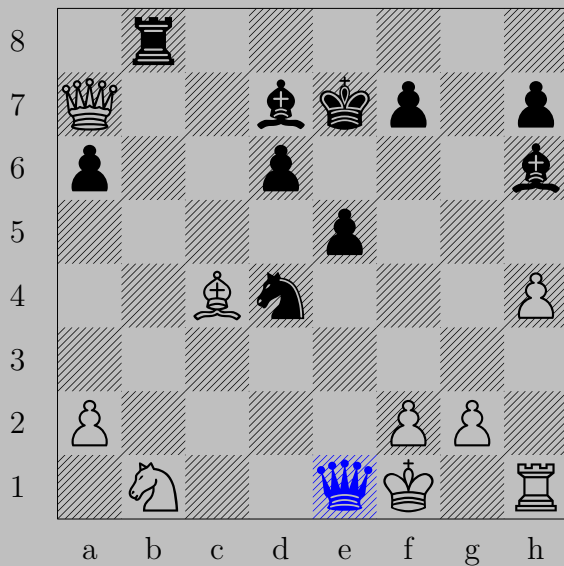


- ♚xg2+  
♔xg2, ♞f4

1410

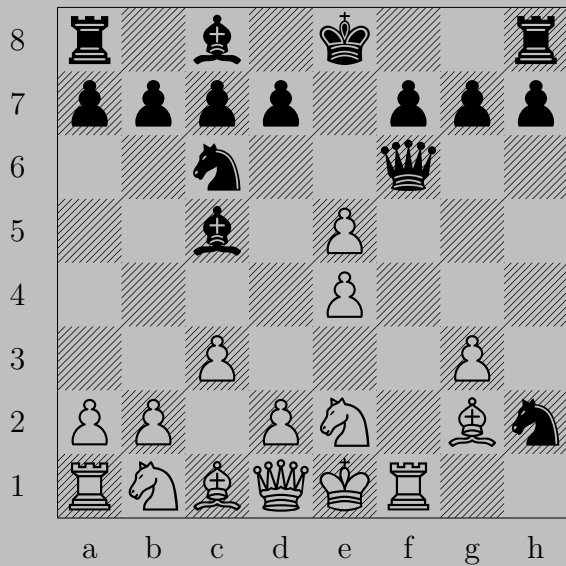


1410



- ♔xe1+  
♕xe1, ♖xb1

1411



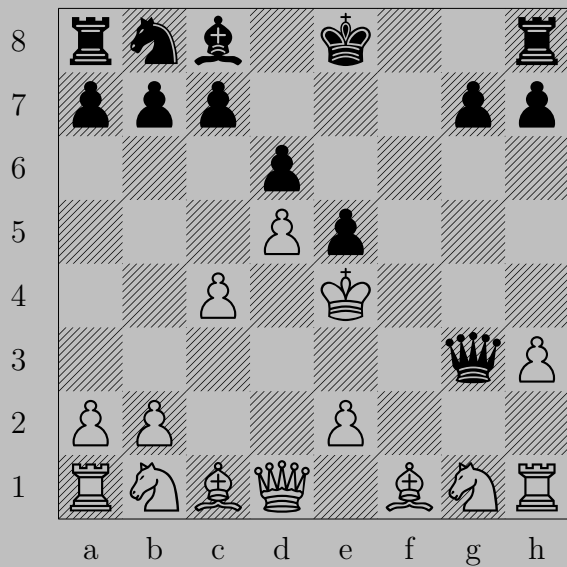
1411



- ♔xf1+  
♕xf1, ♖f3



1412

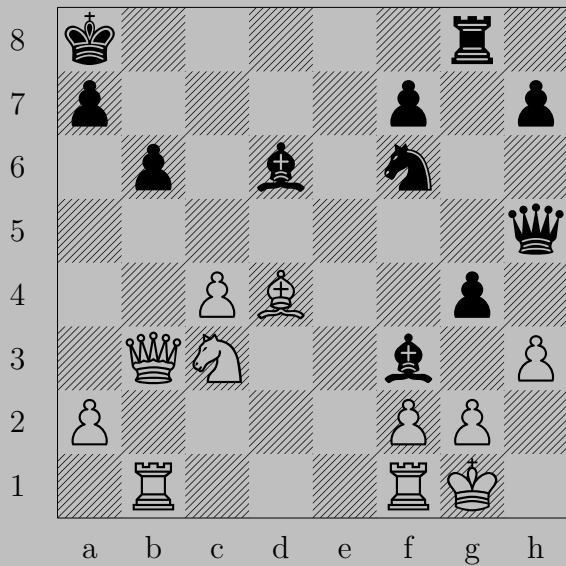


1412

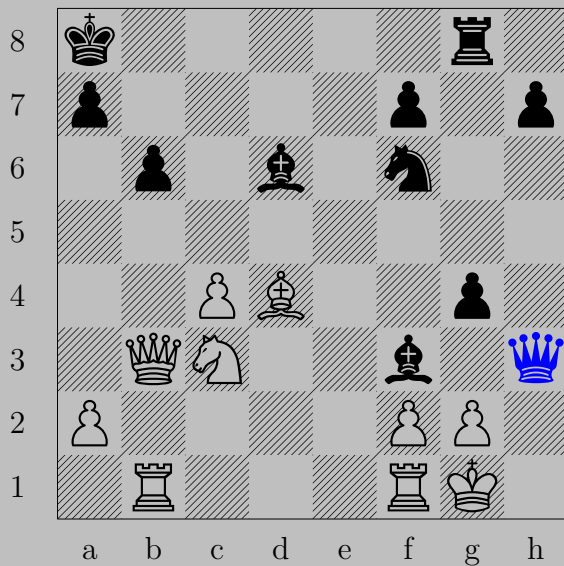


- ♘f5+  
♔xf5, ♚g6

1413



1413

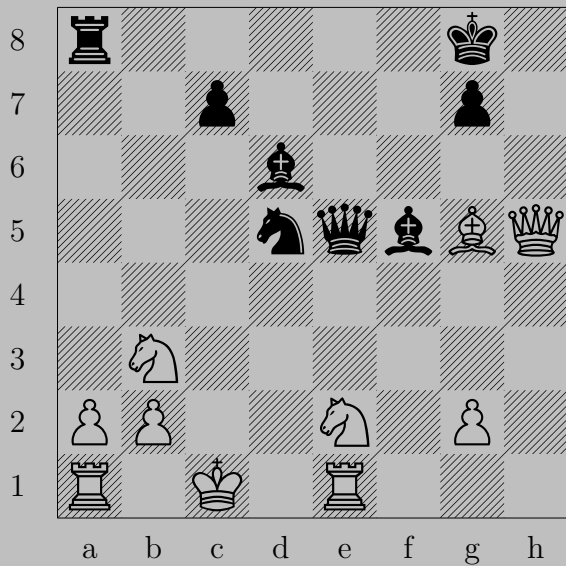


– ♔×h3

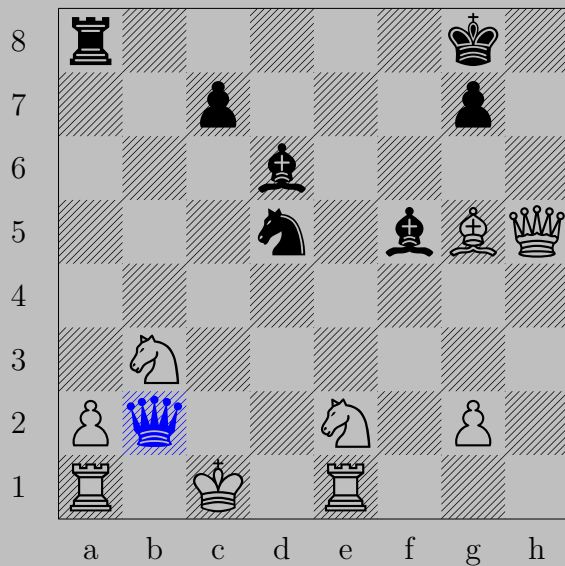
If ♖×h3, ♖×h3. If ♖×f3, ♖×f3. If ♖g3, ♔h1.

Otherwise, ♔×g2.

1414



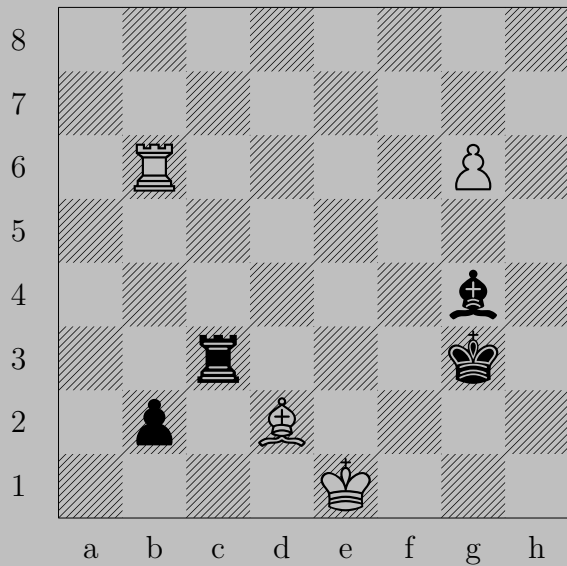
1414



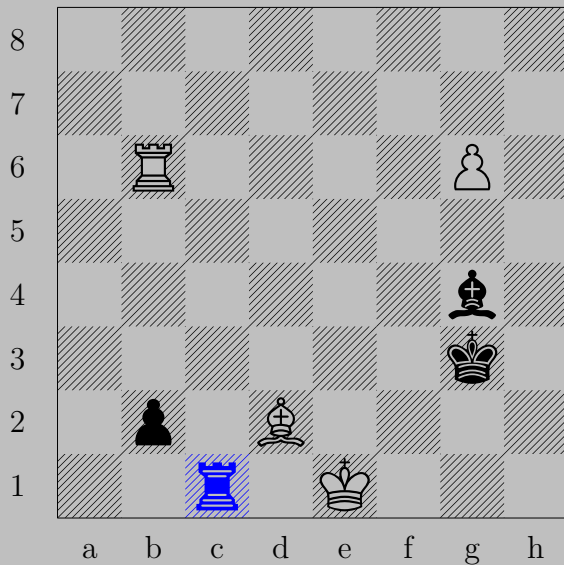
- ♔×b2+

If ♕×b2, ♘a3. If ♕d1, ♔c2.

1415



1415



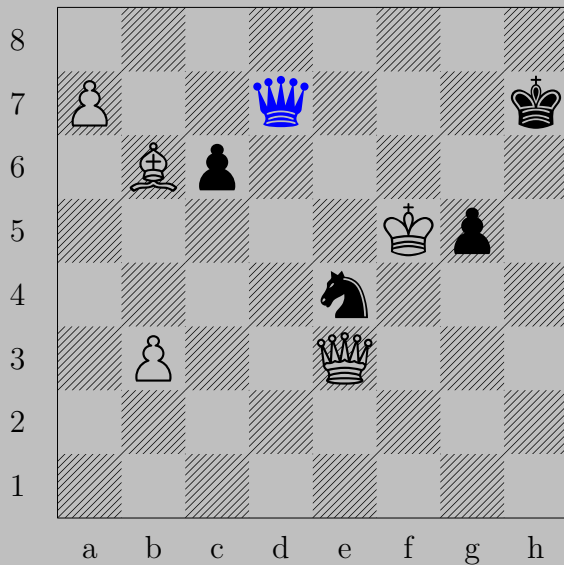
- ♖c1+

♔xc1, ♕xc1(♔)





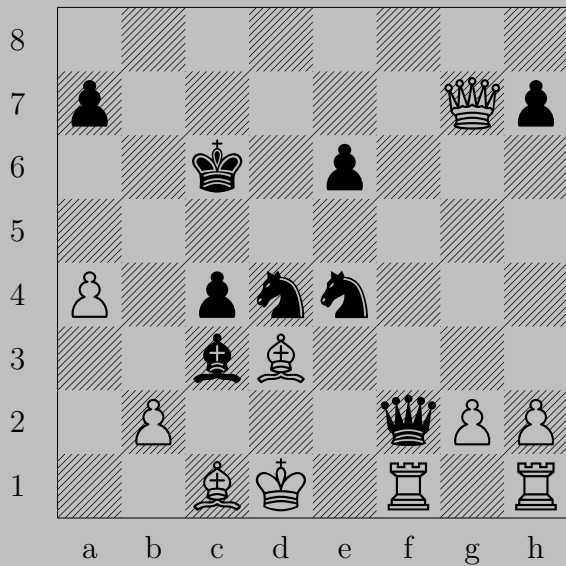
1416



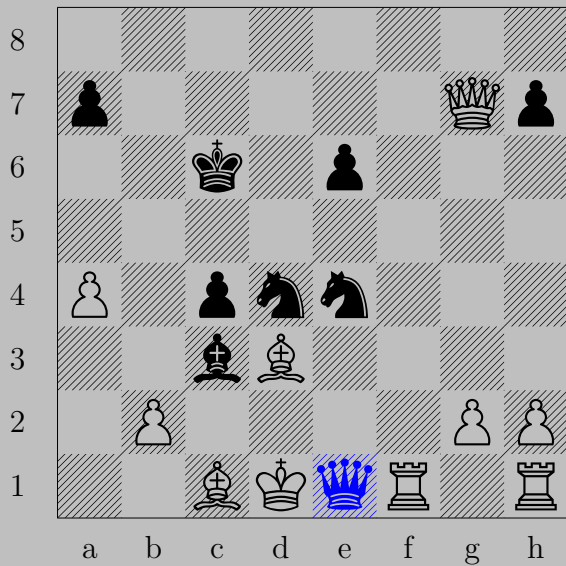
- ♚d7+

♔xe4 or ♔e5, ♚d5

1417

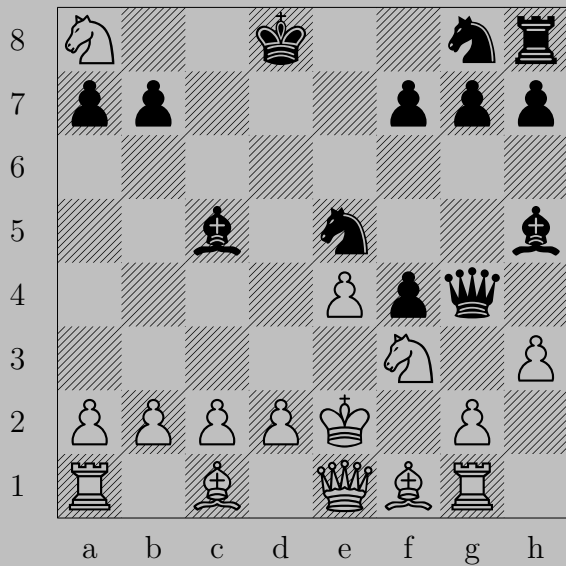


1417



- ♔e1+  
♖xe1, ♞f2

1418

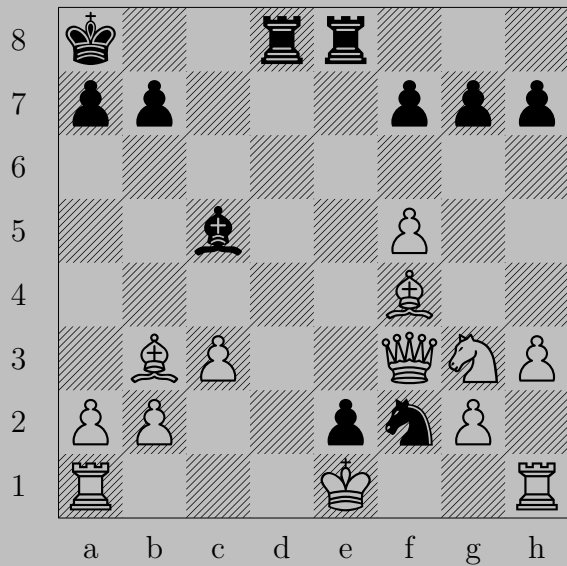


1418

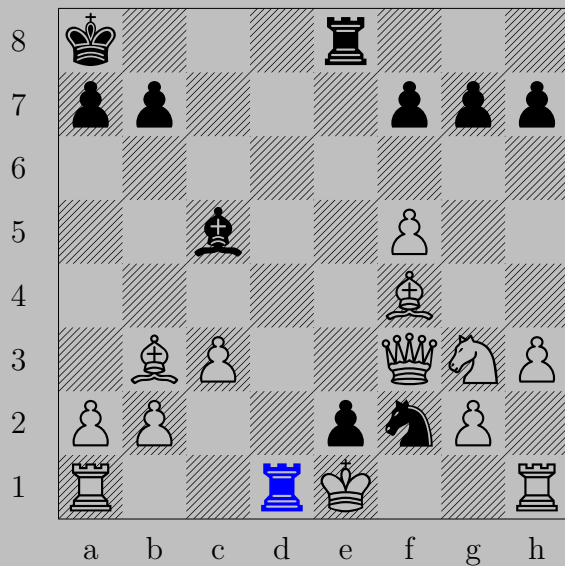


- ♔xf3+  
 ♖xf3, ♘xf3

1419



1419

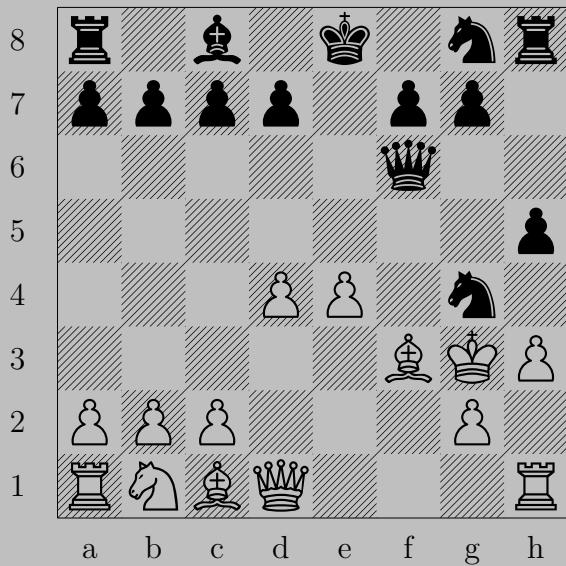


- ♖d1+

♖xd1 or ♟xd1, ♙xd1(♔)



1420



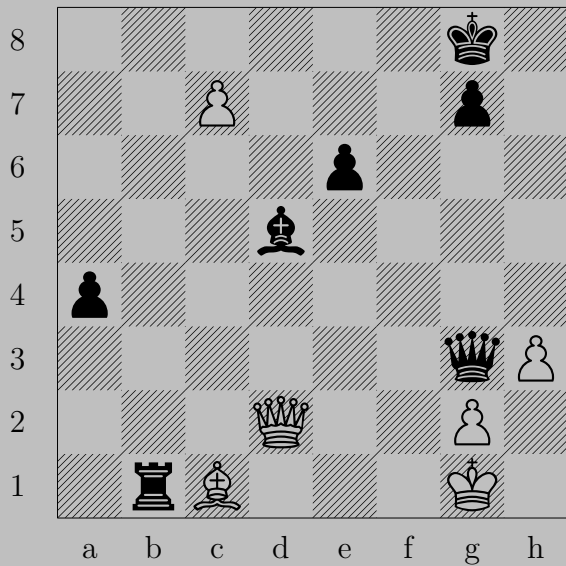
1420



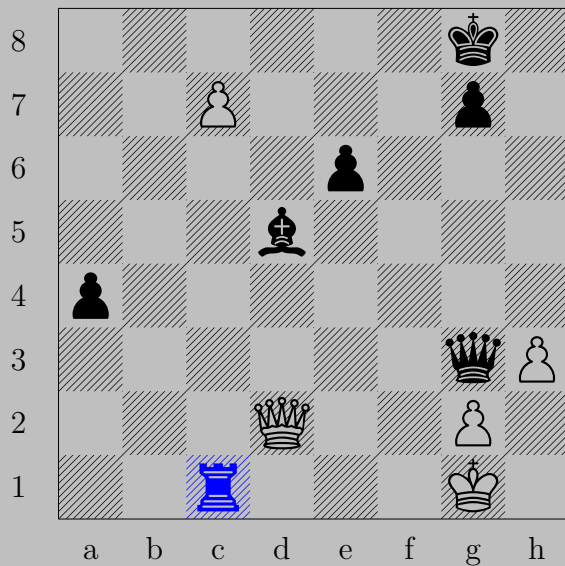
- ♖h4+

♔×g4, ♖d6

1421



1421



- ♖xc1+

If ♔xc1 or ♔d1 or ♔e1, ♔xg2.

1422

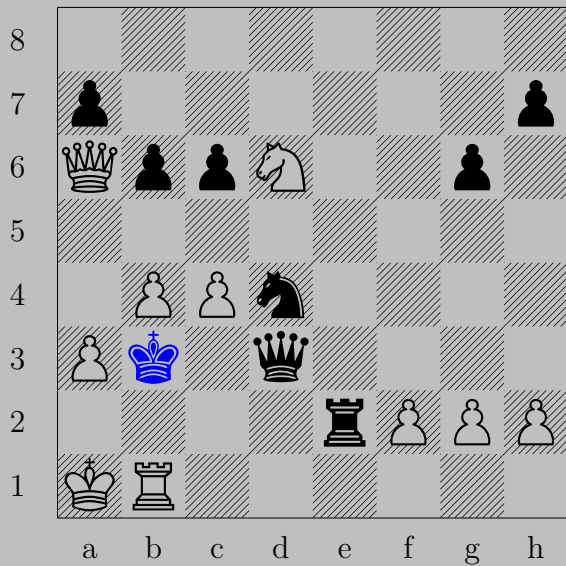


1422



-  $\Delta g1(\text{♞})+$   
 $\text{♖}\times g1, \text{♔}\times f2$

1423



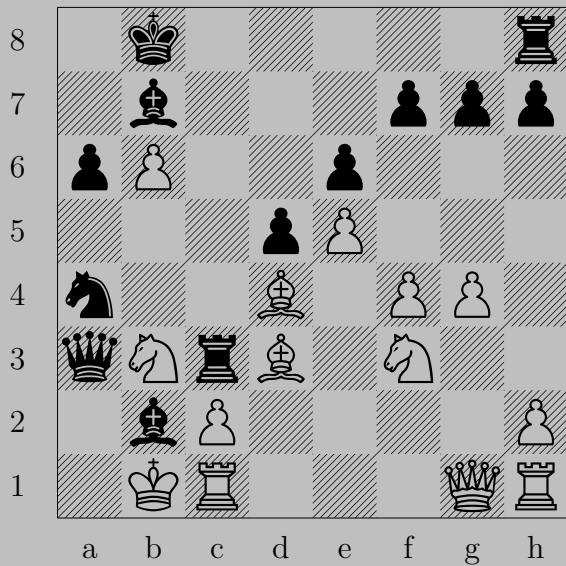
1423



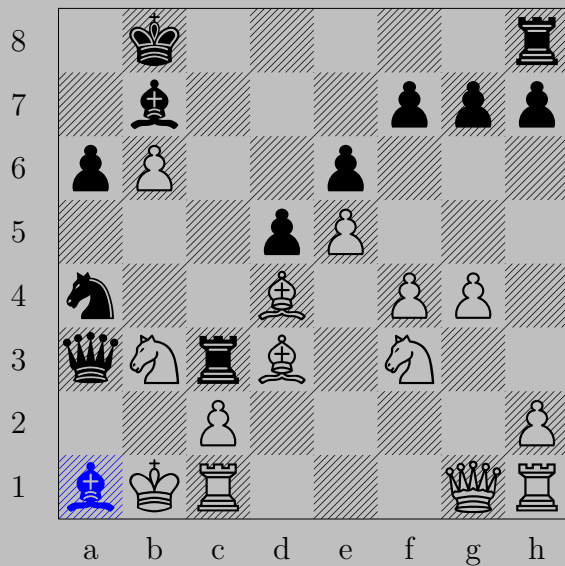
- ♔xb1+  
♚xb1, ♖e1



1424



1424

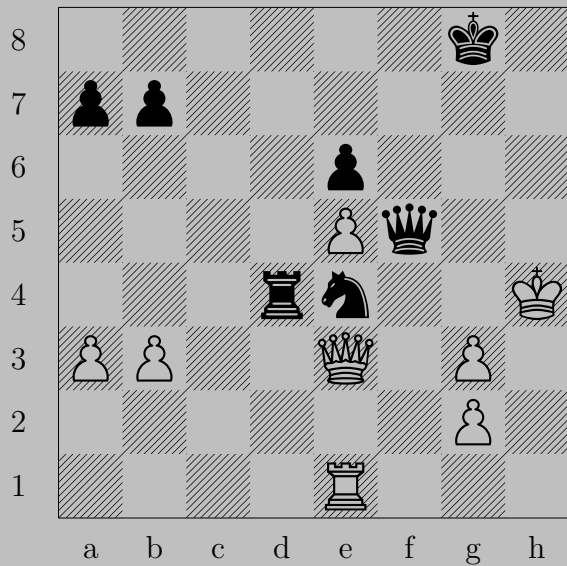


– ♔a1

If ♔xc3, ♖xc3.

Otherwise, ♚b2.

1425



1425

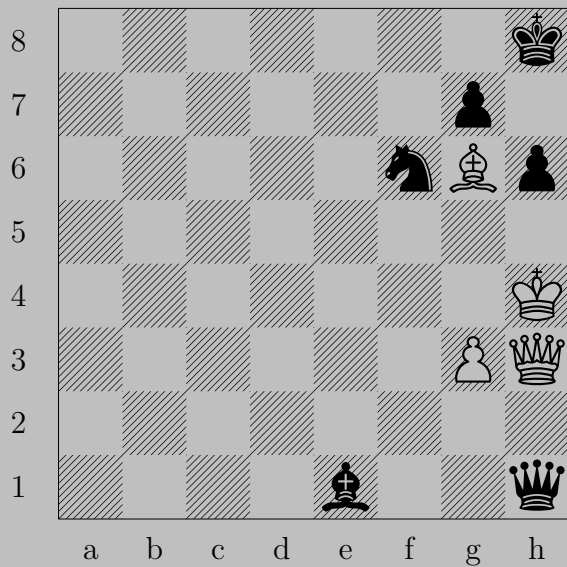


–  $\text{Nf6+}$

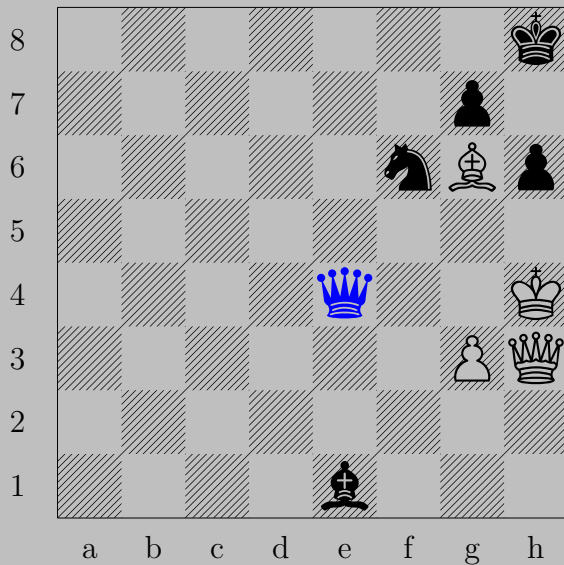
If  $\text{Kg4}$ ,  $\text{Qxg4}$ .

Otherwise,  $\text{Qh5}$ .

1426



1426



– ♔e4+

If ♙x4, ♜g5. If ♔g4, ♔xg4.

1427

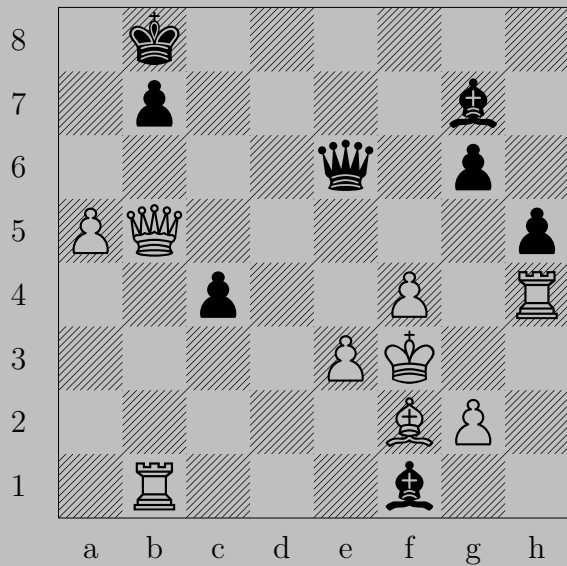


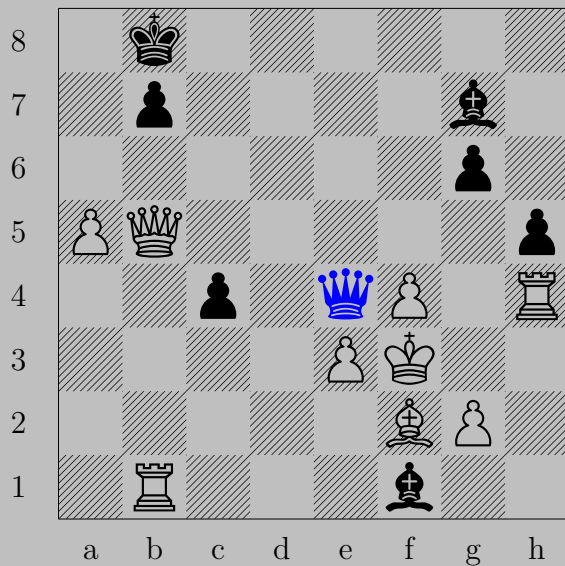
1427



- ♔xe4+  
♔xe4, ♘f5



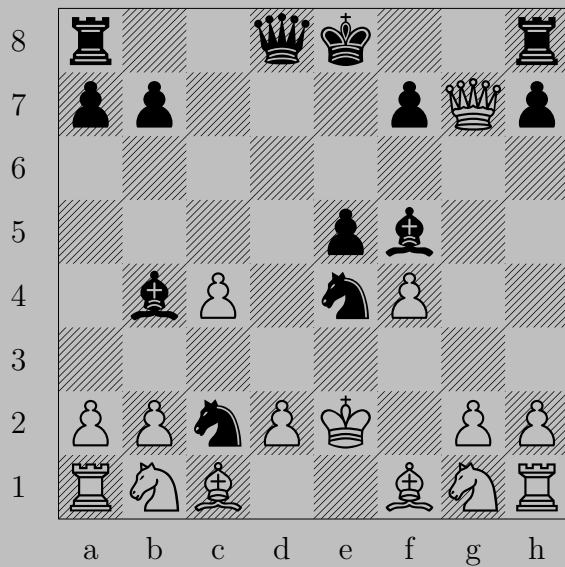




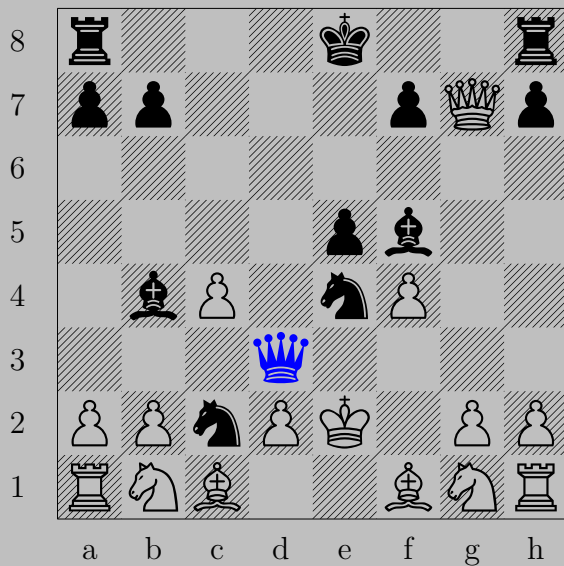
– ♔e4+

If ♙×e4, ♖×g2. If ♙g3, ♔×g2.

1429



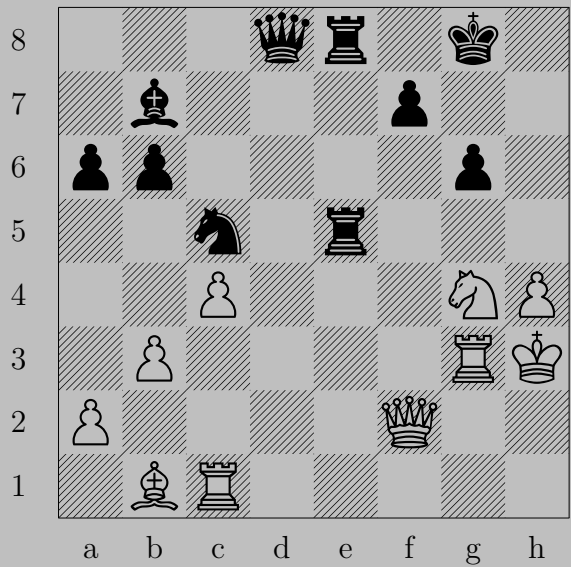
1429



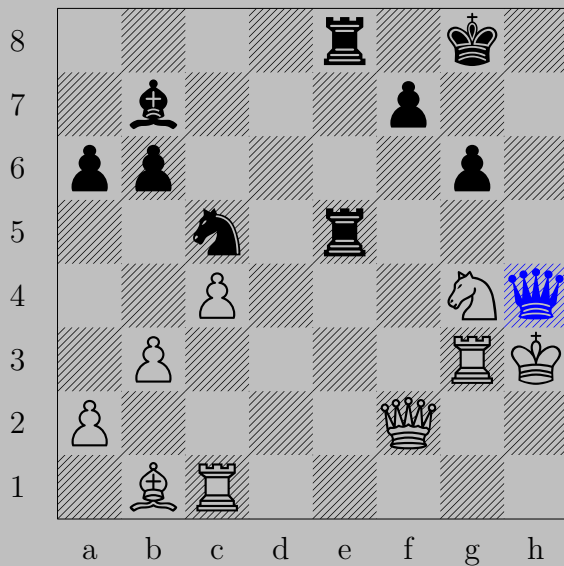
- ♚d3+

If ♟x d3, ♞g3. If ♔d1, ♞f2.

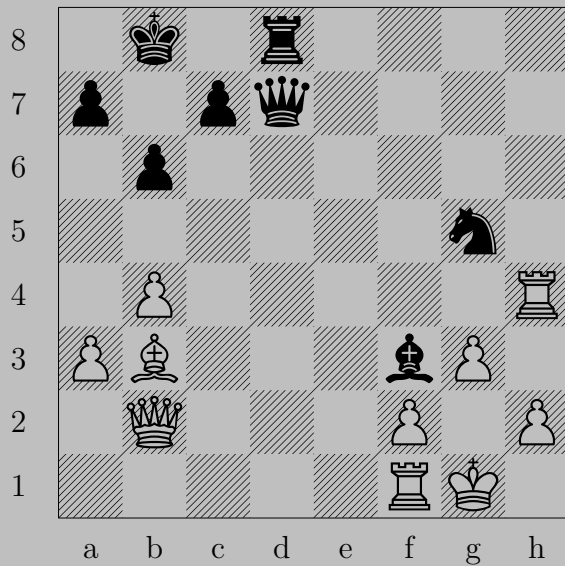
1430



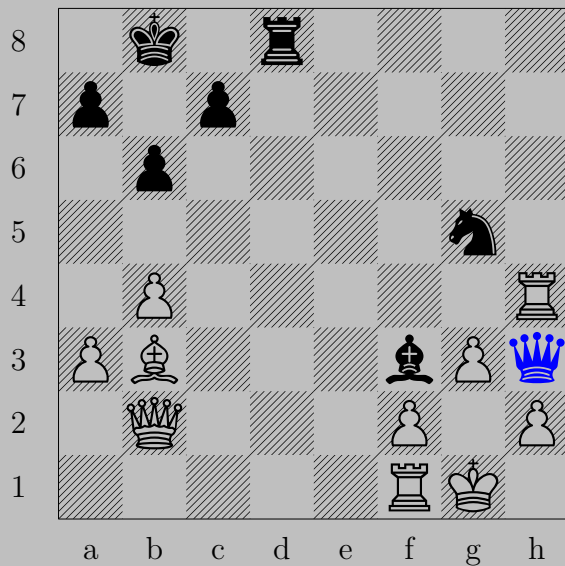
1430



- ♔xh4+  
♕xh4, ♖h5



1431



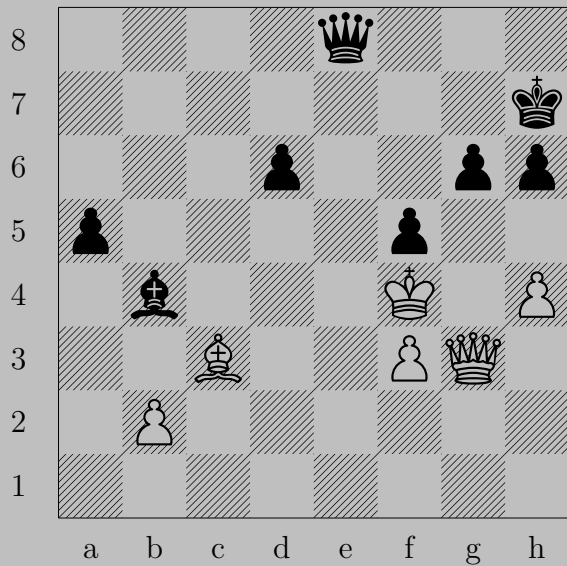
– ♔h3

If ♖xh3, ♘xh3.

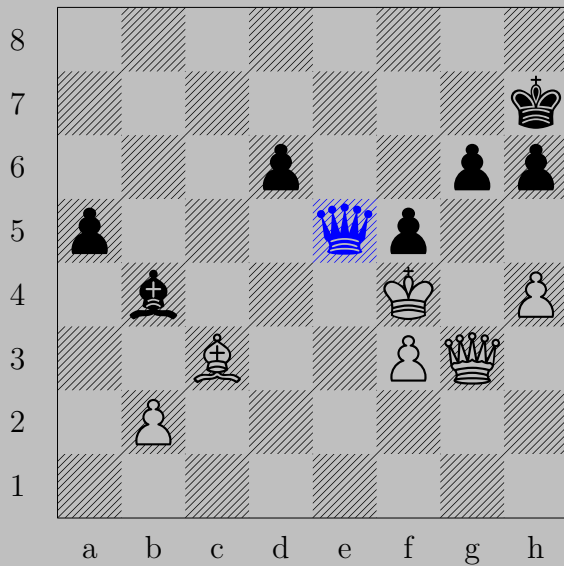
Otherwise, ♔g2.



1432

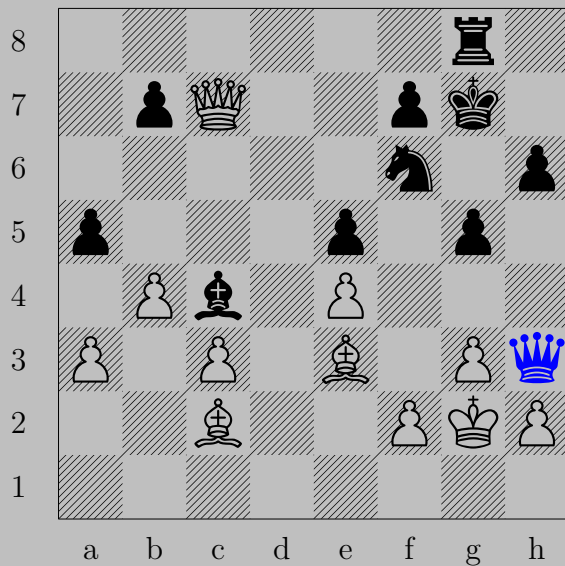


1432



- ♔e5+  
♘xe5, ♘d2

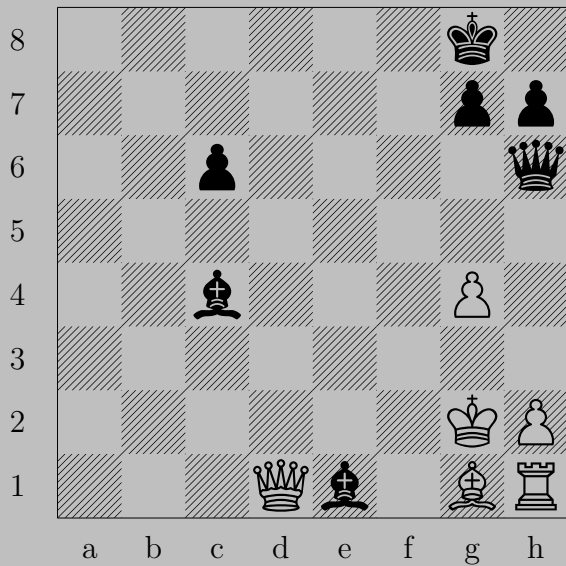




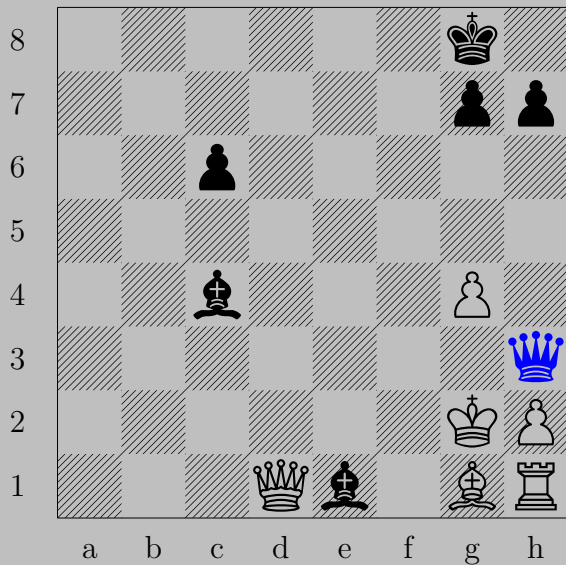
– ♔h3+

If ♕×h3, ♖f1. If ♕h1, ♗f1. If ♕f3, ♗g4.

1434

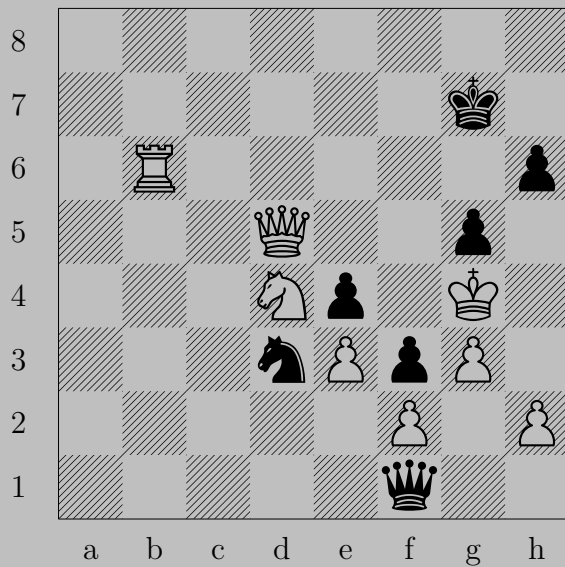


1434

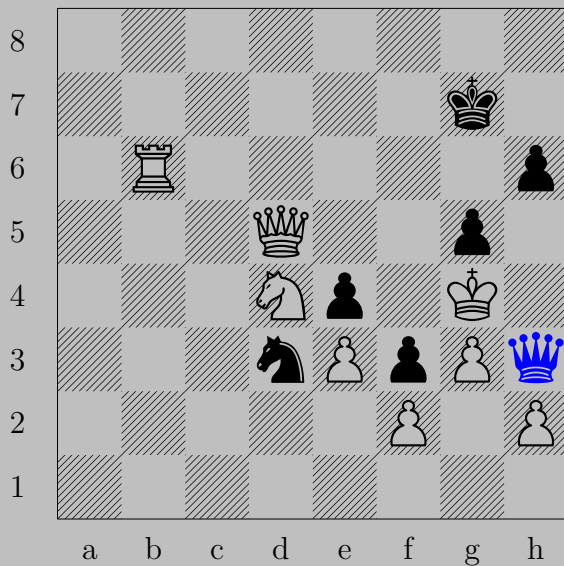


- ♔h3+  
♔xh3, ♕f1

1435



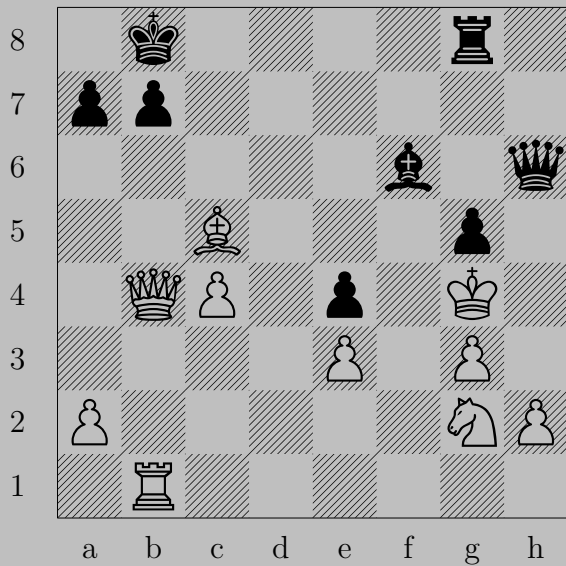
1435



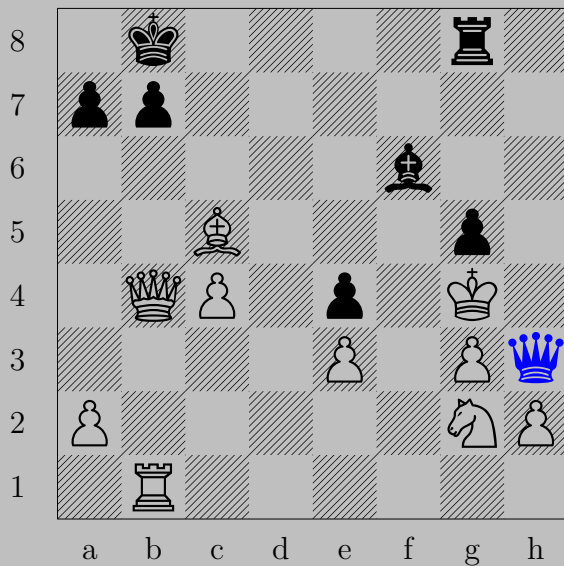
- ♔h3+  
♔xh3, ♞xh2



1436



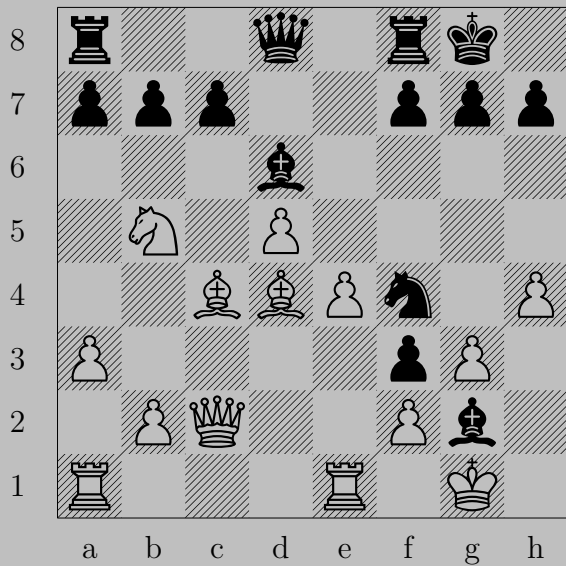
1436



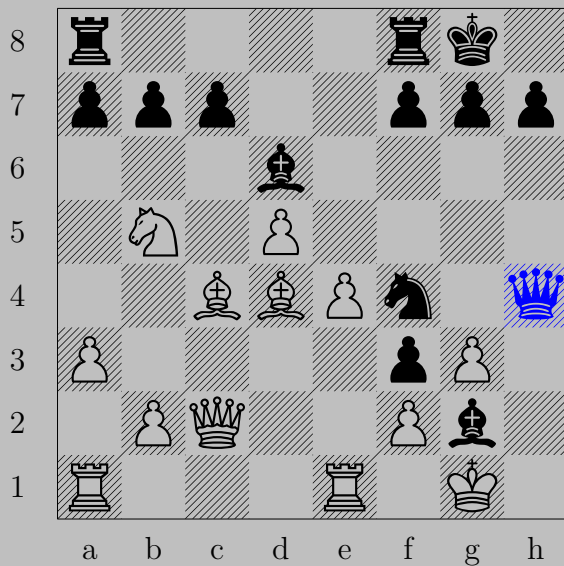
- ♔h3+

♔xh3, ♖g4

1437



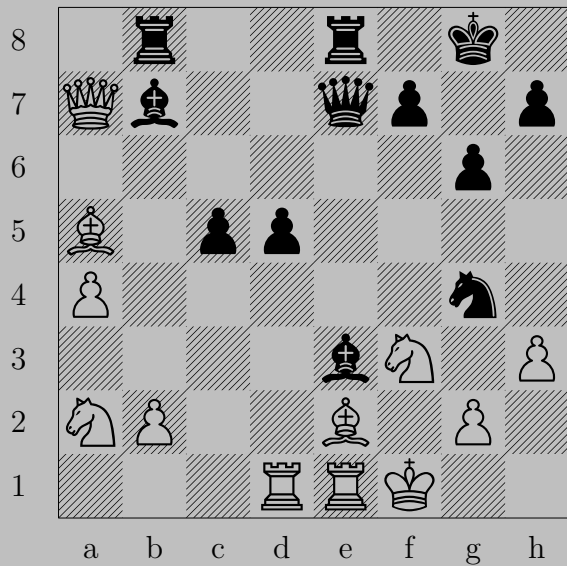
1437

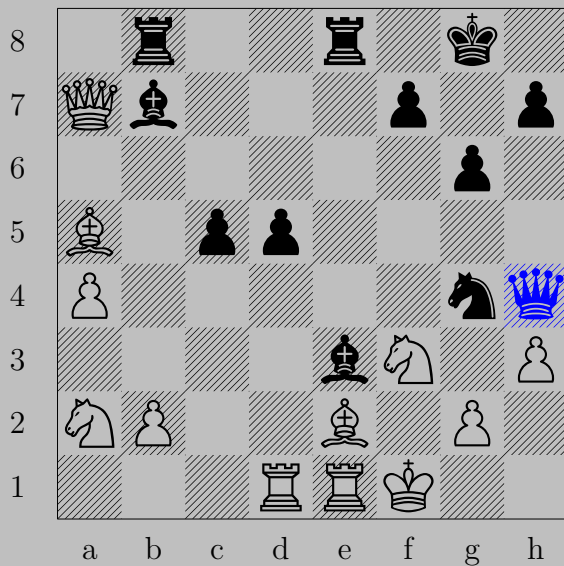


– ♔×h4

If ♙×h4, ♘h3.

Otherwise, ♔h1.



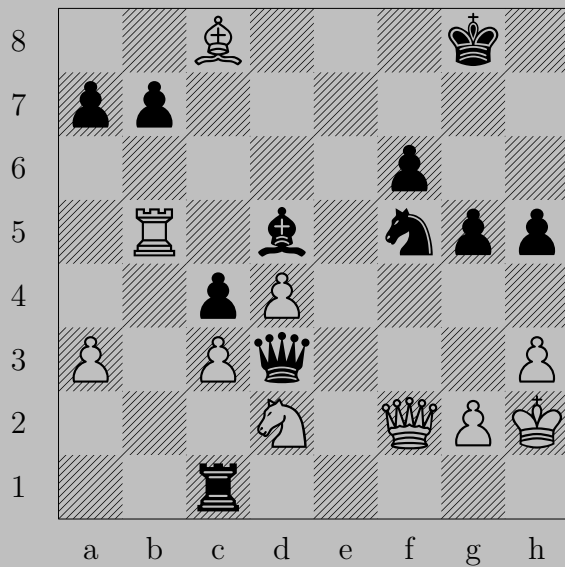


– ♔h4

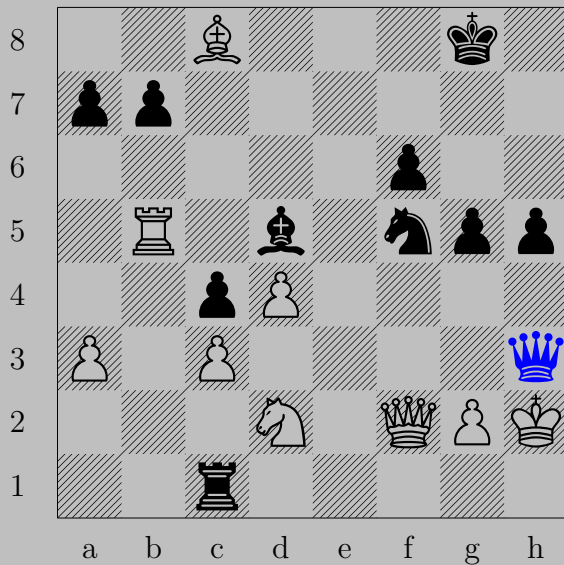
If ♘xh4, ♘h2. If ♖g3, ♔xh3.

Otherwise, ♔f2.

1439



1439

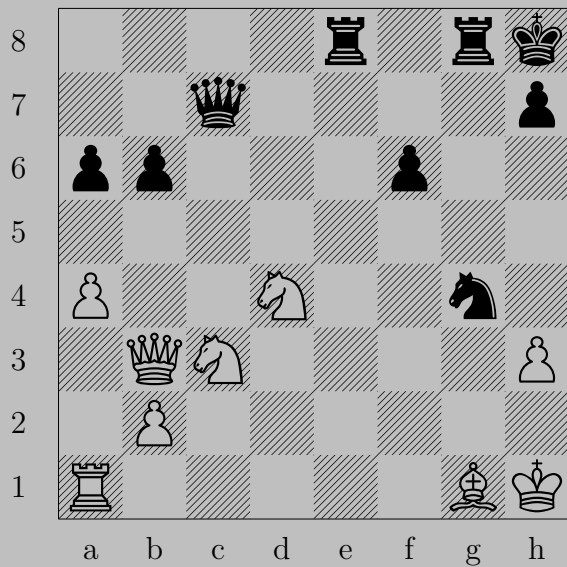


- ♔×h3+

♙×h3 or ♚×h3, ♖h1



1440



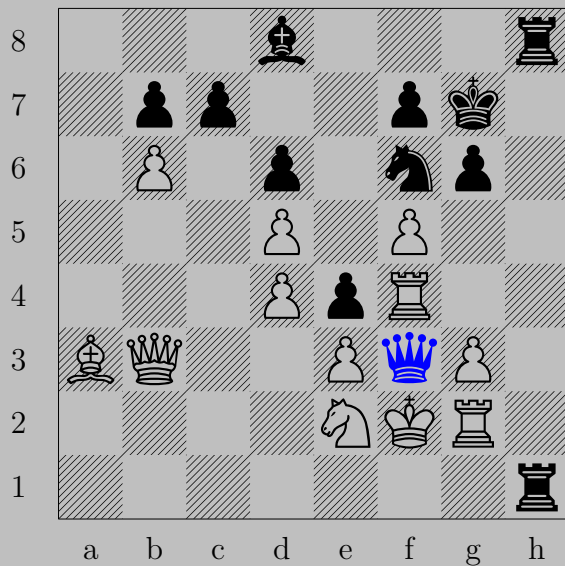
1440



- ♔h2+  
♕xh2, ♖f2



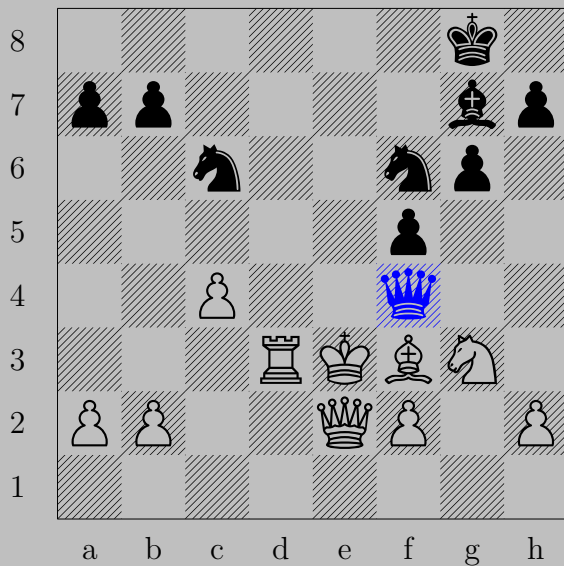
1441



- ♚f3+  
♜xf3, ♞g4

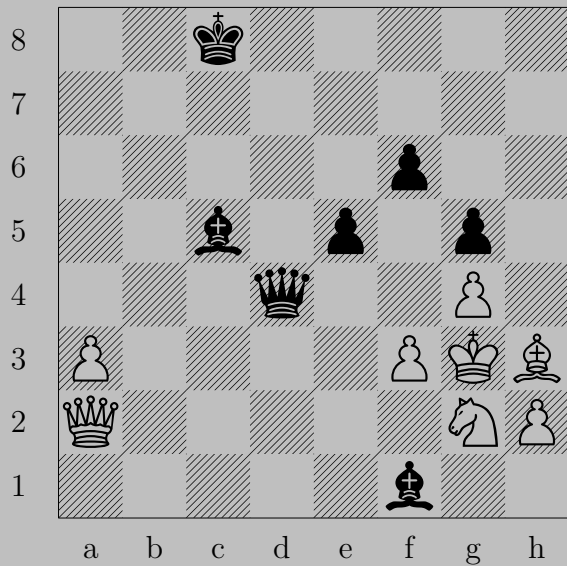


1442

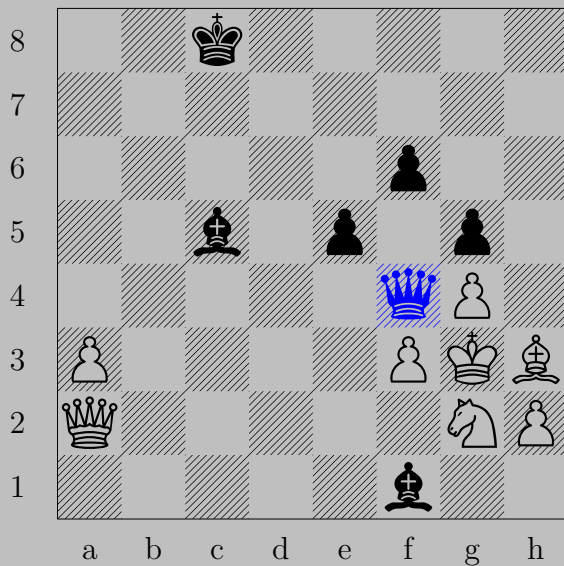


- ♚xf4+  
♔xf4, ♞h6

1443



1443

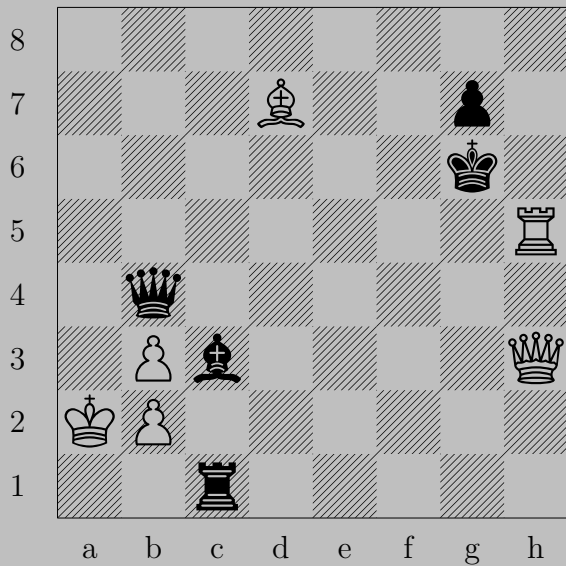


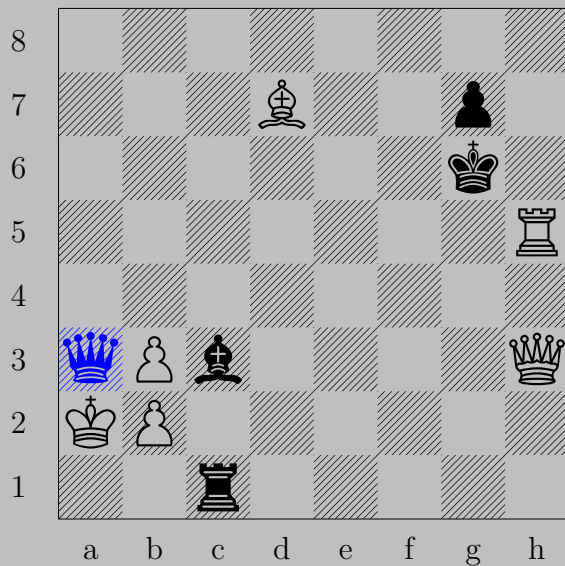
- ♚f4+

♞xf4, ♙(e5)xf4



1444

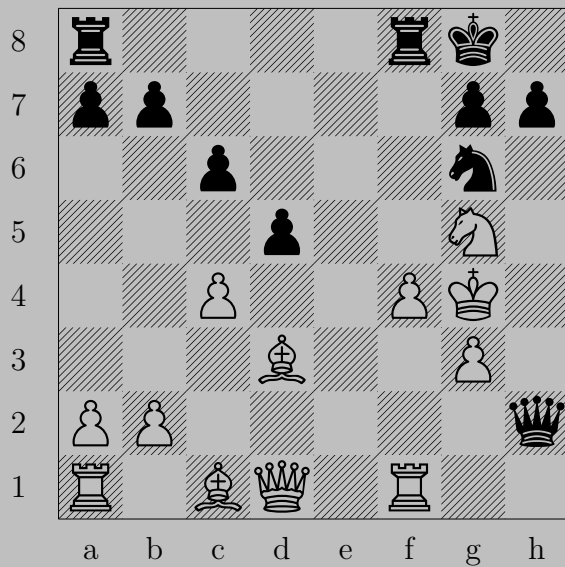




- ♔a3+

♙x3 or ♚x3, ♖a1

1445

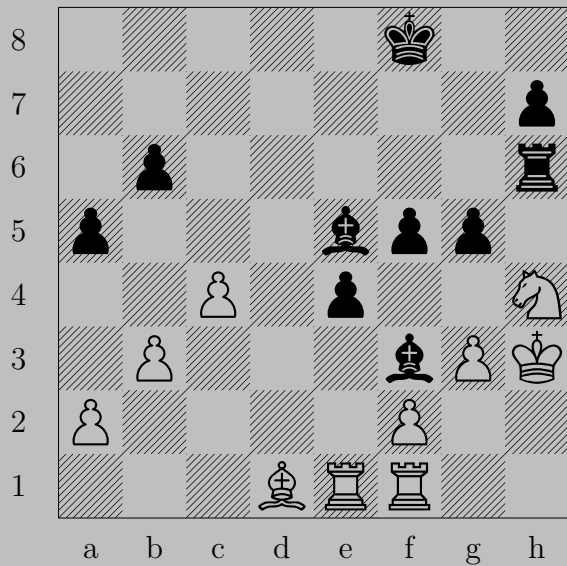


1445

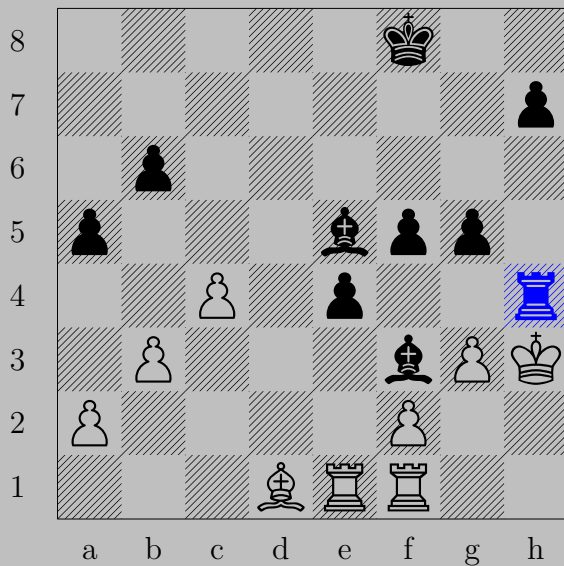


- ♞e5+  
♙×e5, ♙h5

1446

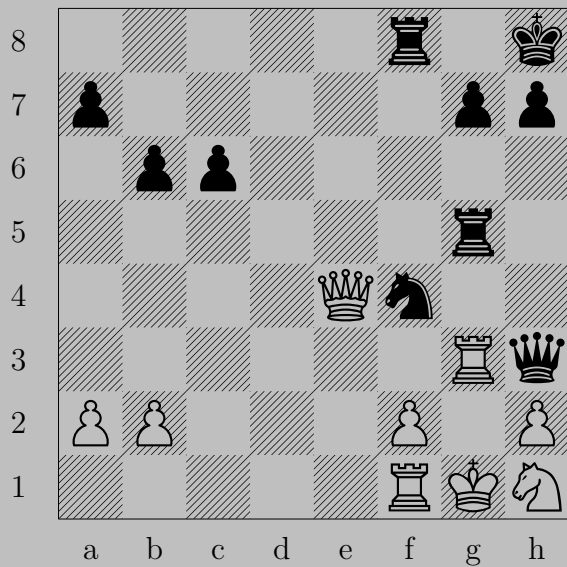


1446



– ♖xh4+  
♙xh4, ♙g4

1447



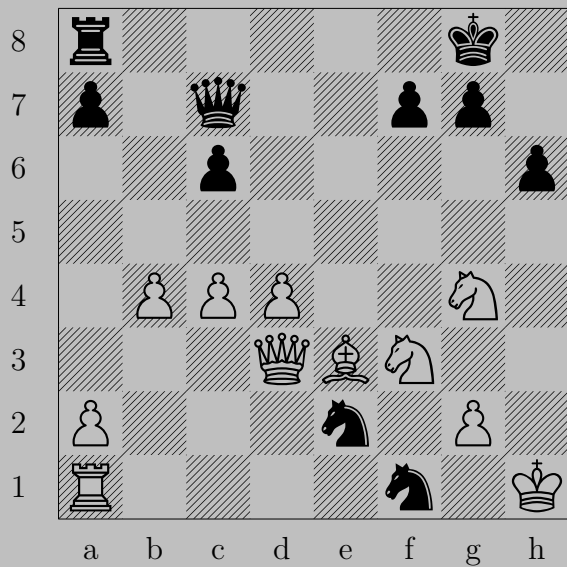
1447



- ♔g2+

If ♖xg2, ♘h3. If ♚xg2, ♘e2.



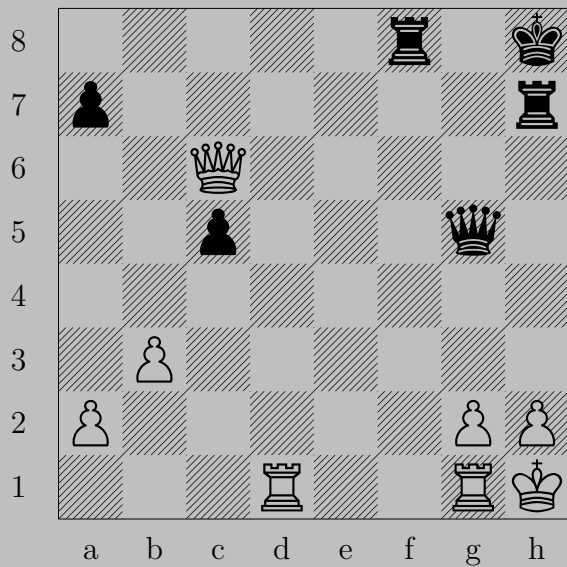


1448

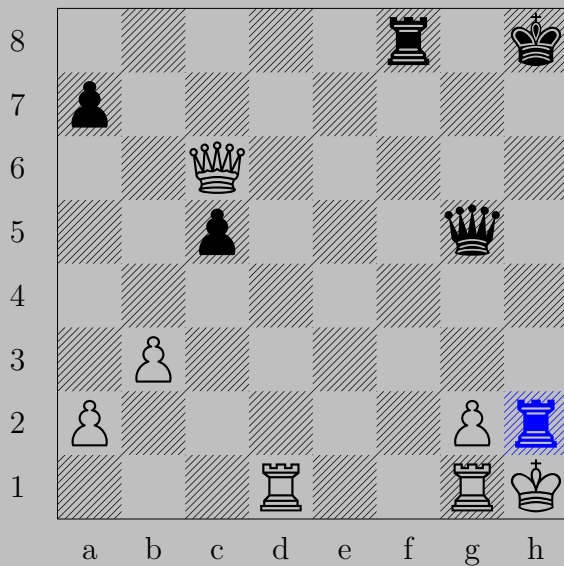


- ♔h2+  
♘xh2, ♘(f1)g3

1449



1449



- ♖xh2+  
♔xh2, ♕h4

1450



1450

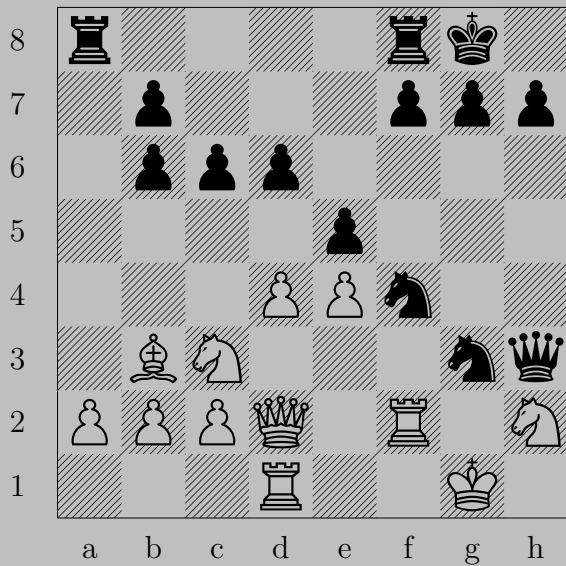


– ♖xc3

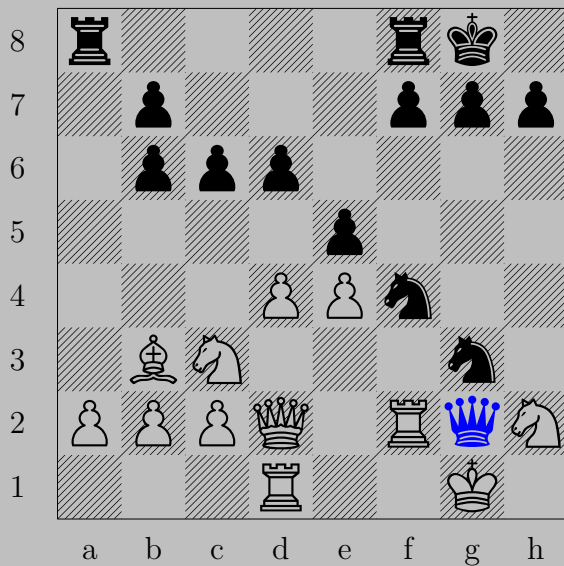
If ♜xc3, ♚c2. If ♜d3 or ♚e4, ♚xb2.

Otherwise, ♚b1.

1451



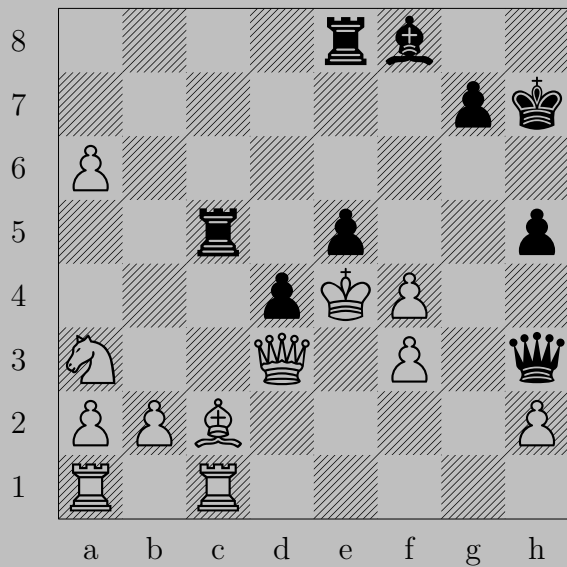
1451



- ♔g2+  
♖xg2, ♘h3



1452

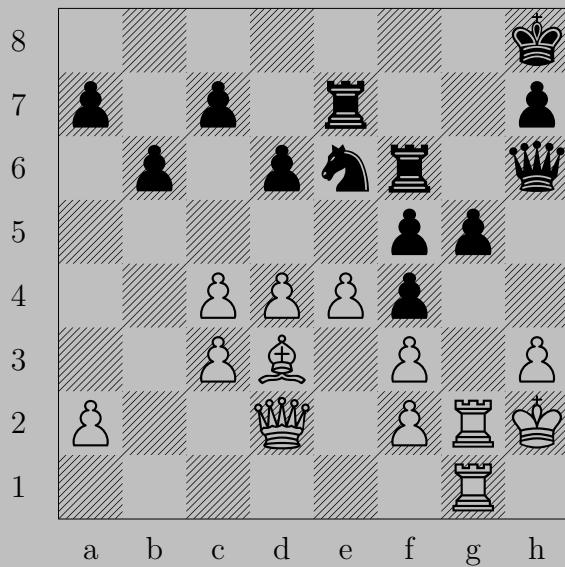


1452

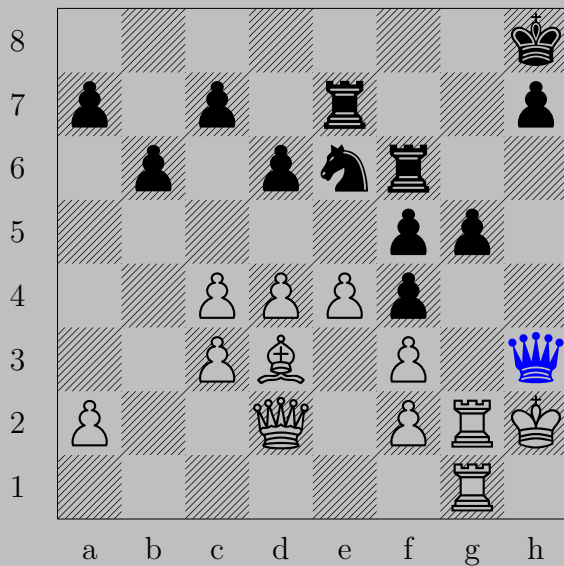


- ♔f6+  
♔xf6, ♖e4

1453



1453



- ♔×h3+  
 ♕×h3, ♖h6

1454

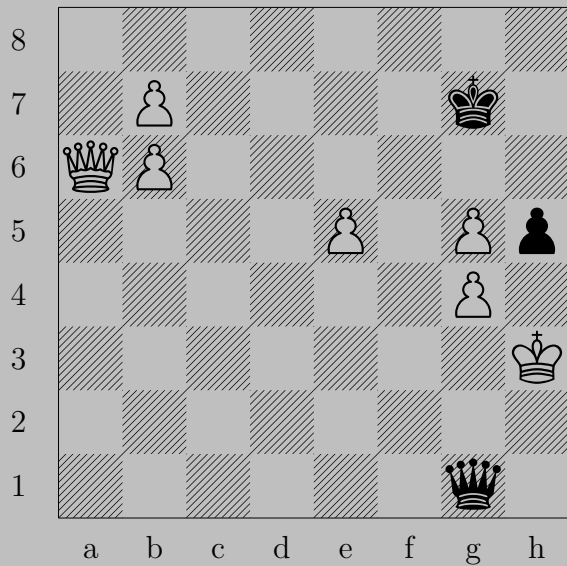


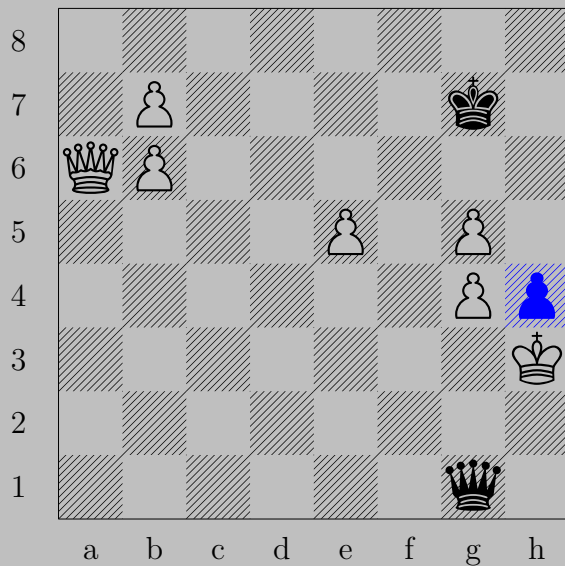
1454



- ♔xc3+  
 ♕xc3, ♖a3

1455





– ♖h4

If ♔×h4, ♕h2. If ♕a3 or ♕d3, ♕h1.

Otherwise, ♕g3.



1456

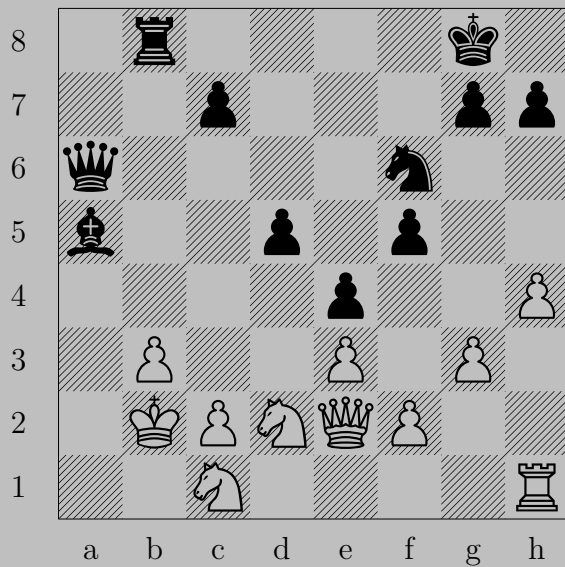


1456

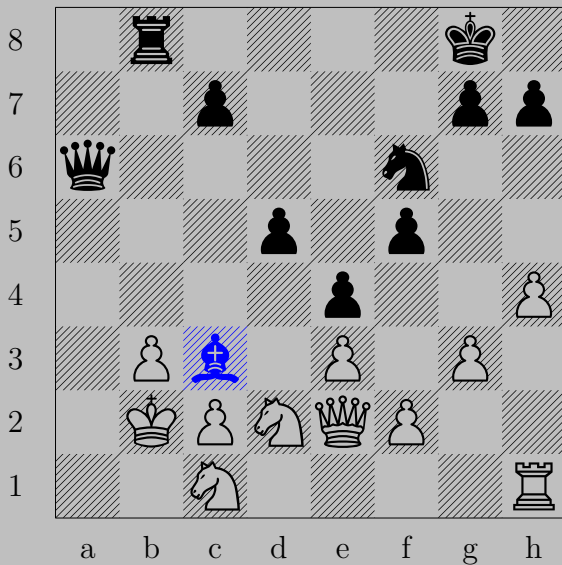


- ♔d3+  
♙×d3, ♙×d3

1457



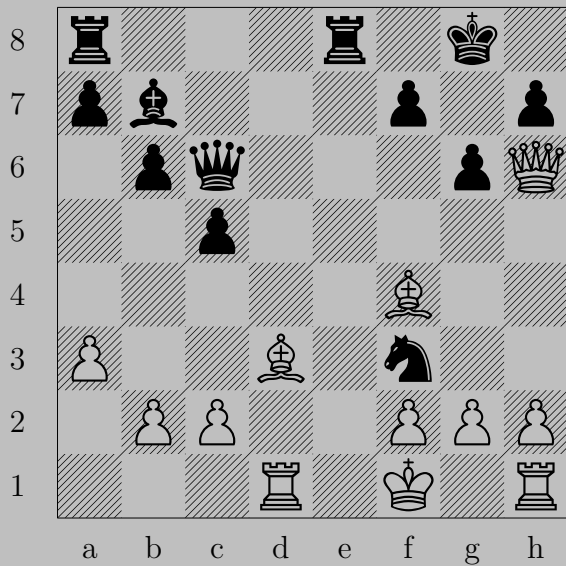
1457



- ♖c3+

♔xc3 or ♔b1, ♚a1

1458



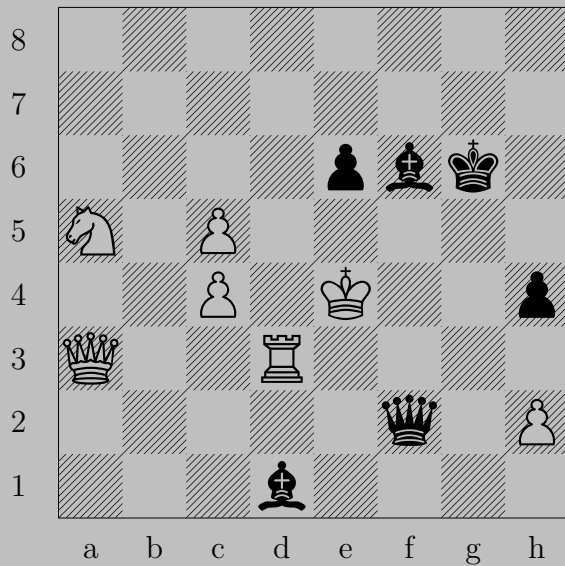
1458



-  $\text{N}d2+$

$\text{R}xd2$  or  $\text{K}g1, \text{Q}xg2$

1459



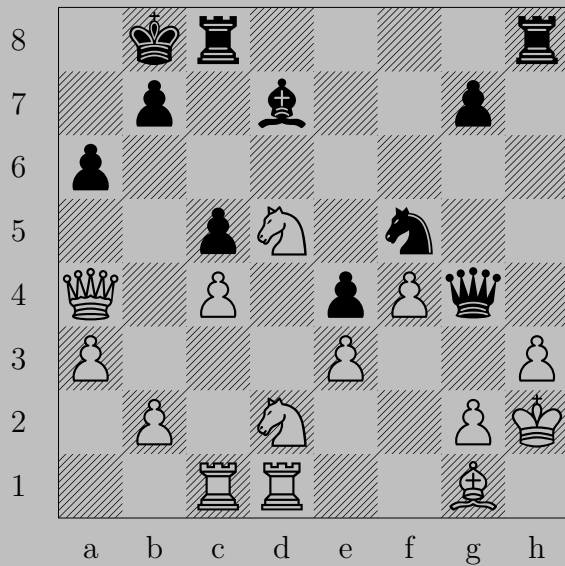
1459



- ♘f3+

If ♖xf3, ♚d4. If ♔f4, ♙e5.



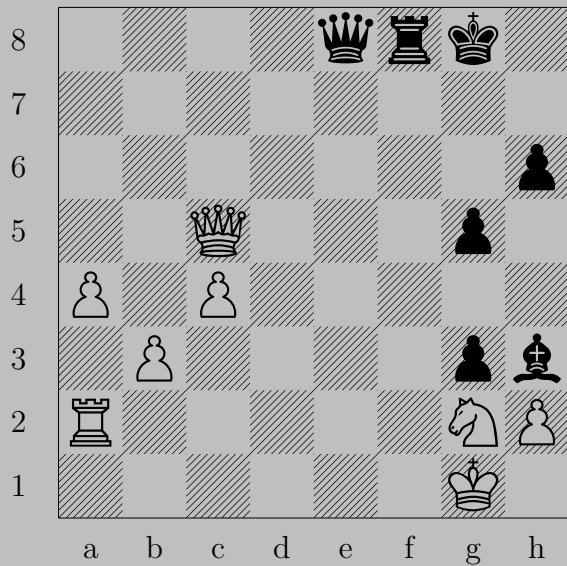




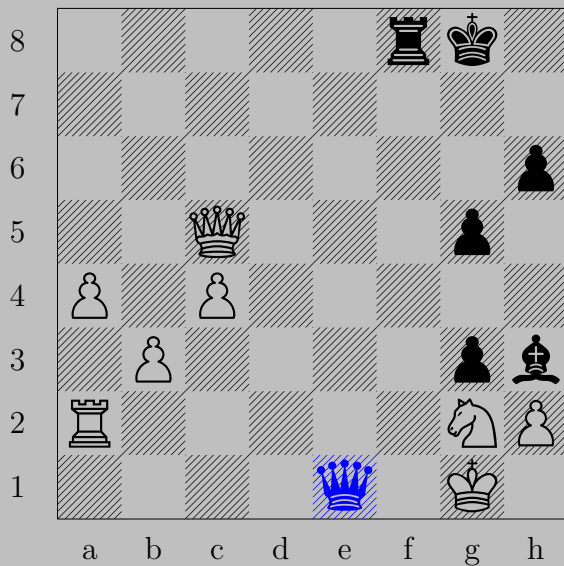
–  $\text{N}h4$

If  $\text{P} \times g4$ ,  $\text{N}f5$ . If  $\text{P}g3$ ,  $\text{Q} \times h3$ .

Otherwise,  $\text{Q} \times g2$ .



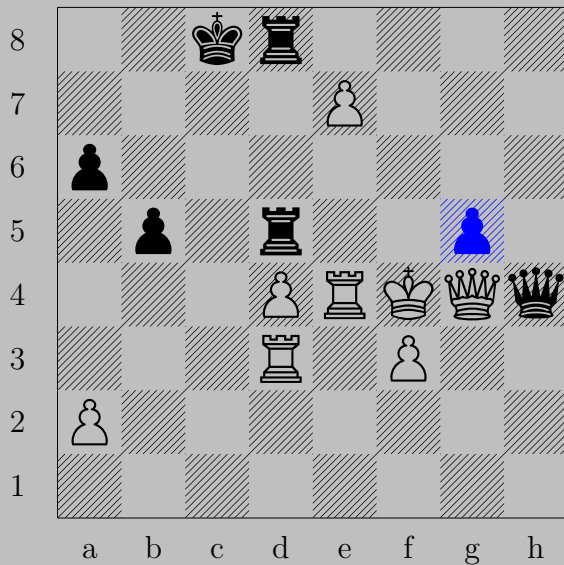
1461



- ♔e1+  
♞xe1, ♖f1



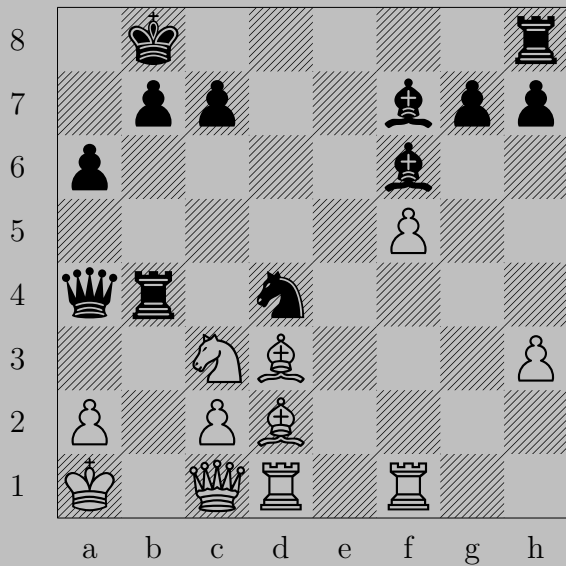
1462



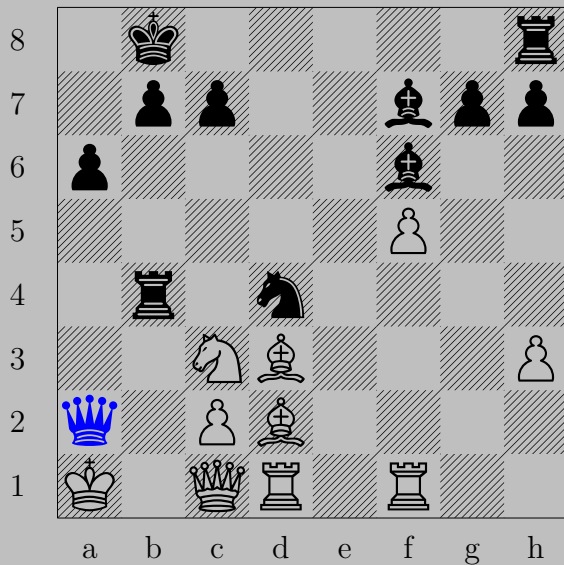
- ♖g5+

If ♕xg5, ♕xg5. If ♔e3, ♕e1.

1463

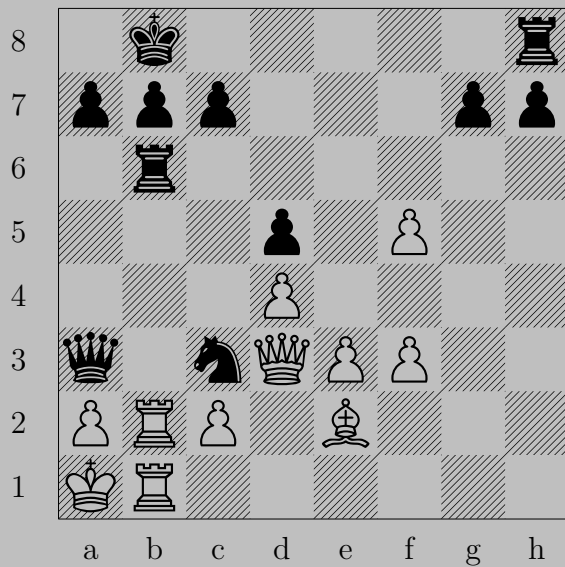


1463

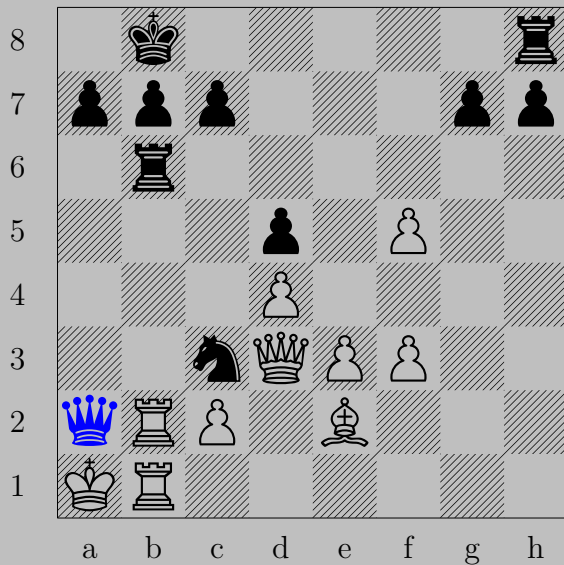


- ♔xa2+  
♘xa2, ♘xc2



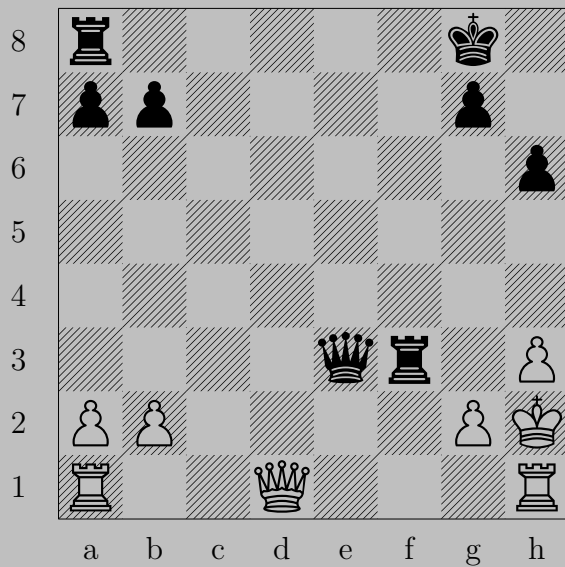


1464

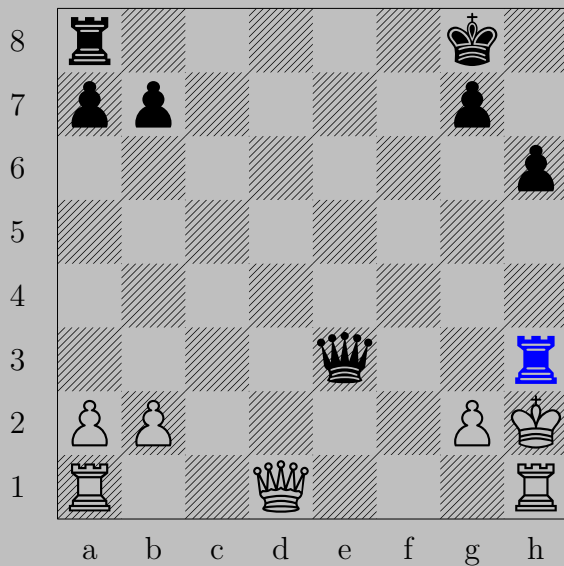


$- \text{♔} \times a2 +$   
 $\text{♖} \times a2, \text{♖} \times b1$

1465

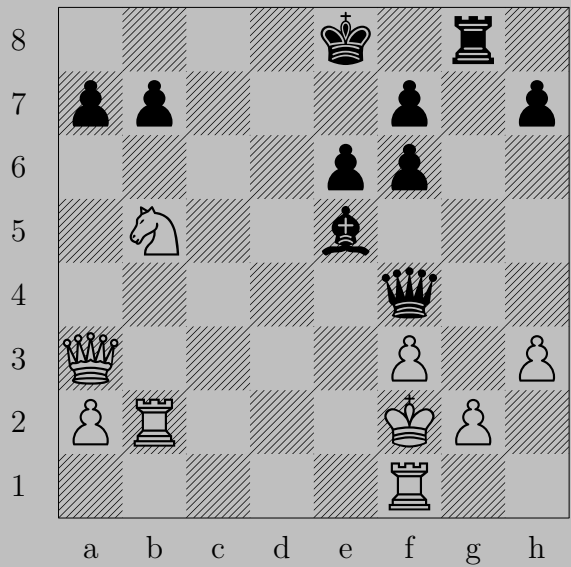


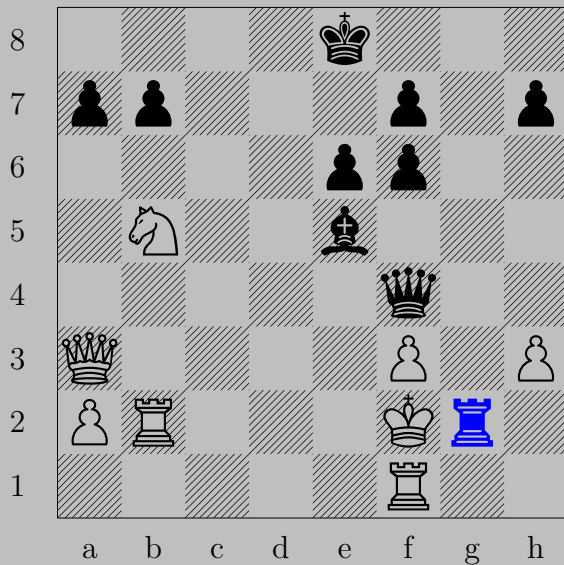
1465



– ♖×h3+  
♙×h3, ♔f2

1466

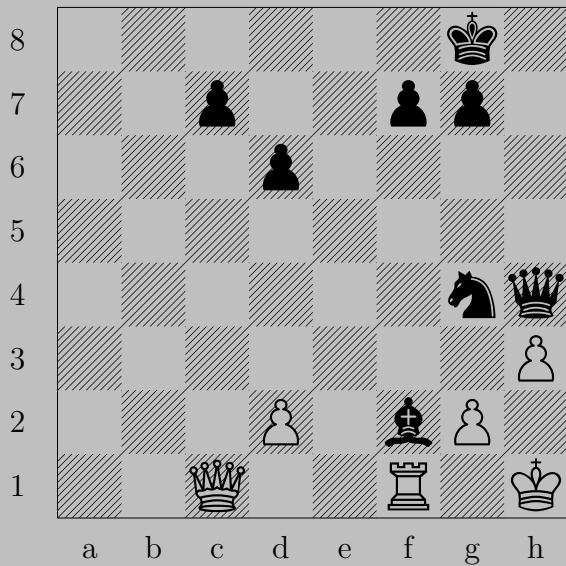




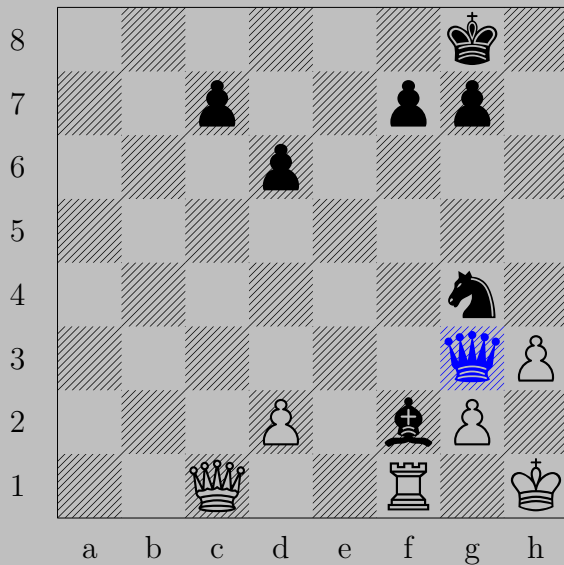
– ♖×g2+

If ♔×g2, ♕h2. If ♔e1, ♕c1.

1467



1467

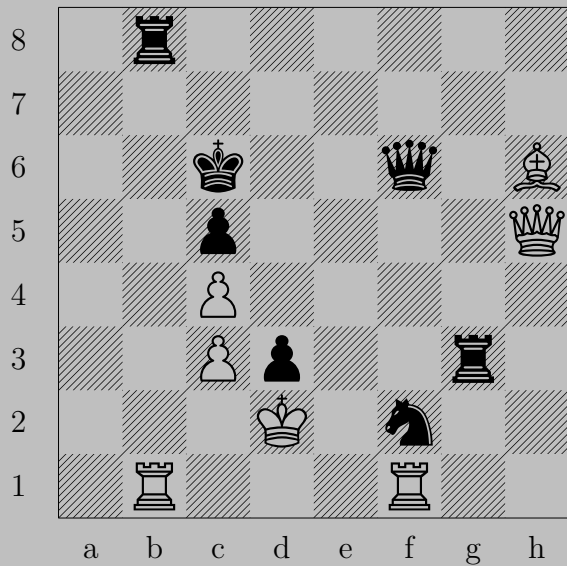


– ♚g3

If ♘xg4, ♚h4.

Otherwise, ♚h2.





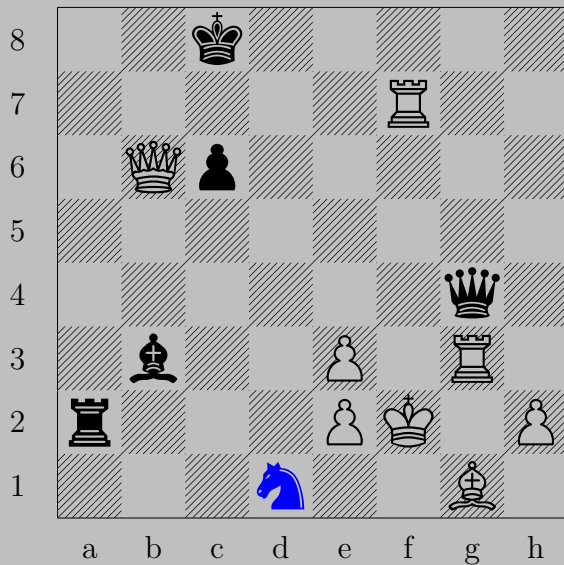
1468



- ♔xc3+  
♕xc3, ♖e4



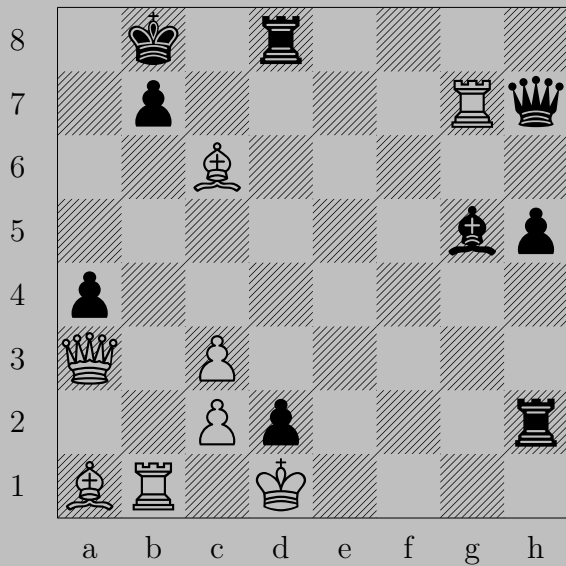
1469



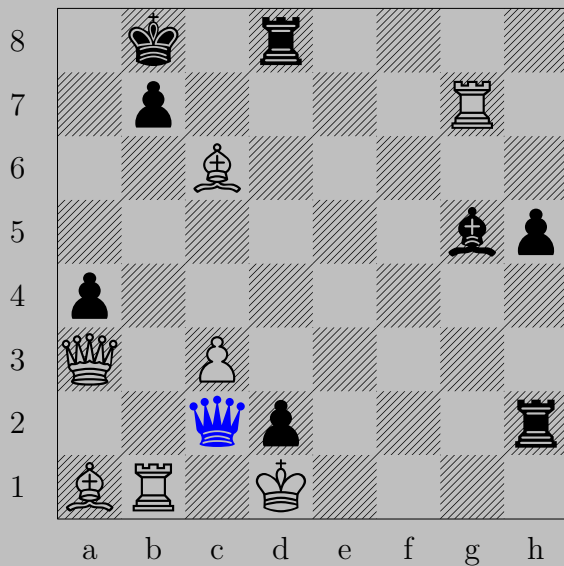
- ♖d1(♘)+

If ♔g2, ♙d5. If ♔e1 or ♔f1, ♚x2.

1470



1470



- ♔xc2+  
♙xc2, ♘d1(♔)