

Chess Puzzles

1501-1600

Mate in Two

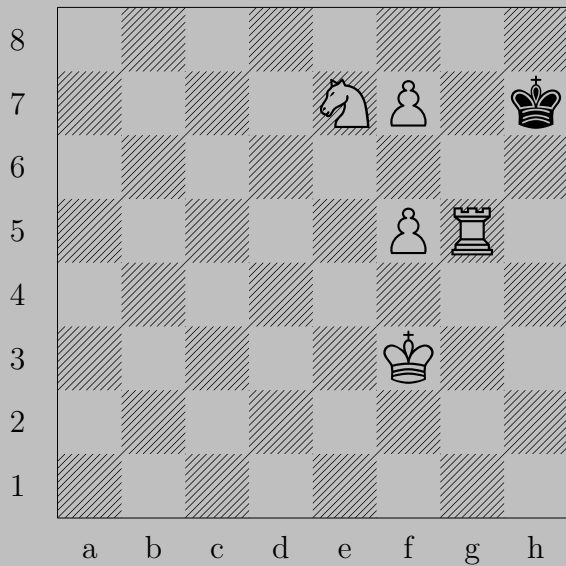
White to Move

László Polgár

Links

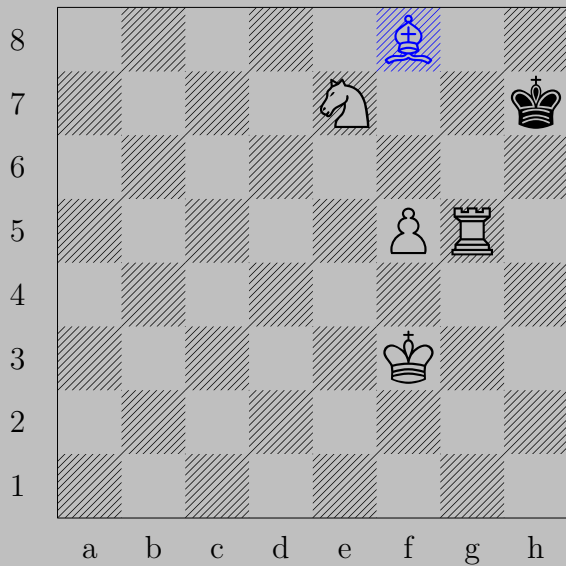
1501	1502	1503	1504	1505	1506	1507	1508	1509	1510
1511	1512	1513	1514	1515	1516	1517	1518	1519	1520
1521	1522	1523	1524	1525	1526	1527	1528	1529	1530
1531	1532	1533	1534	1535	1536	1537	1538	1539	1540
1541	1542	1543	1544	1545	1546	1547	1548	1549	1550
1551	1552	1553	1554	1555	1556	1557	1558	1559	1560
1561	1562	1563	1564	1565	1566	1567	1568	1569	1570
1571	1572	1573	1574	1575	1576	1577	1578	1579	1580
1581	1582	1583	1584	1585	1586	1587	1588	1589	1590
1591	1592	1593	1594	1595	1596	1597	1598	1599	1600

1501



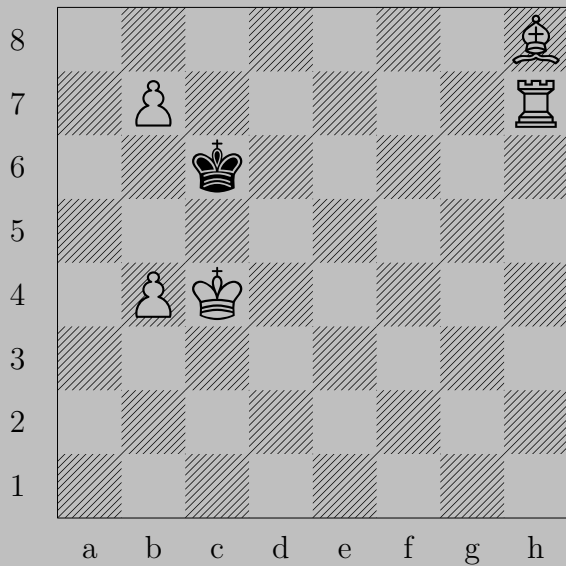
A. Azashin, 1972/73

1501



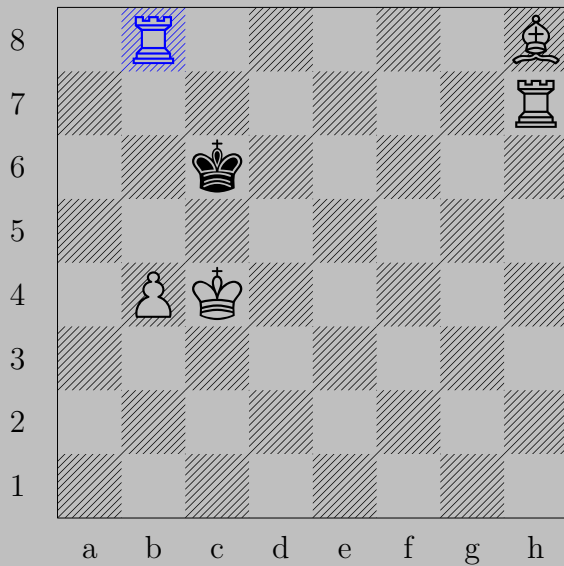
♗f8 (♗), ♚h8
 ♖h5

1502



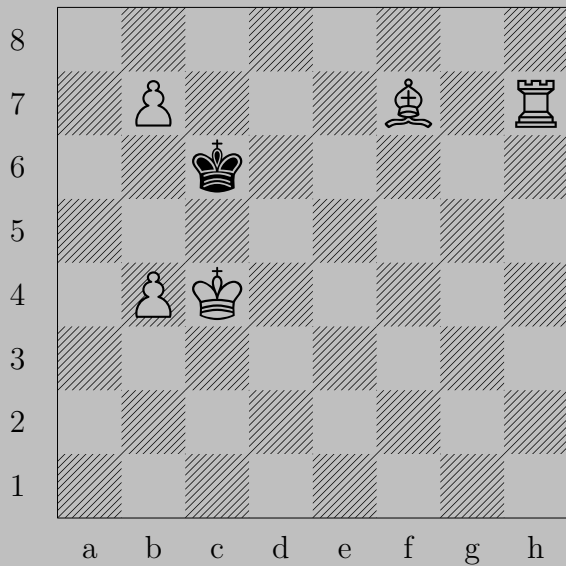
A. Azashin, 1971

1502



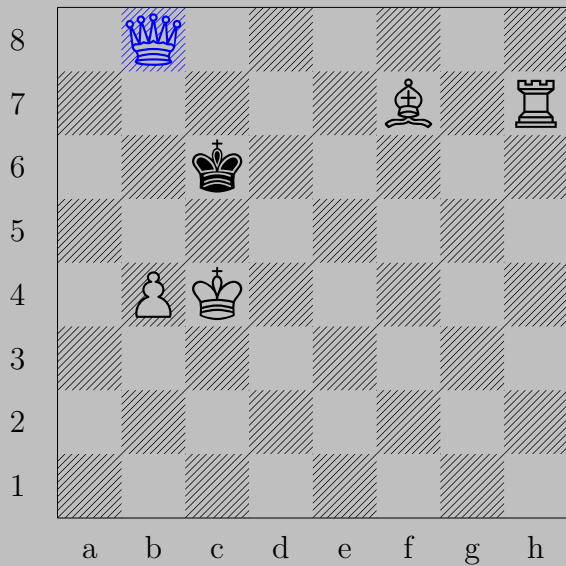
$\text{♖b8}(\text{♖}), \text{♔d6}$
 ♜b6

1503

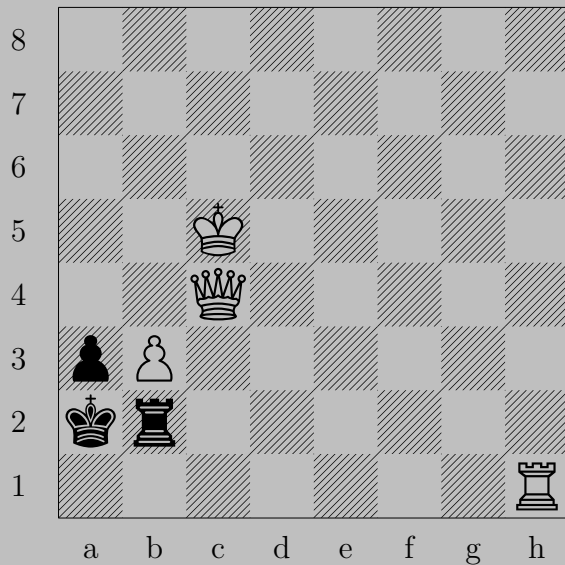


A. Azashin, 1971

1503



♙b8(♚), ♔d7
♘d5



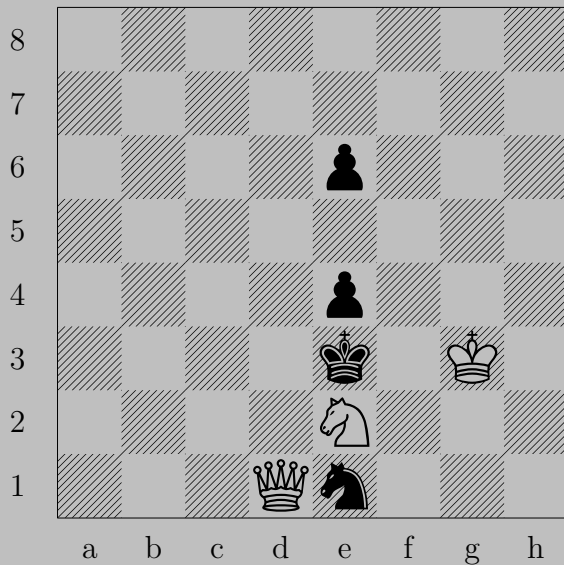


♙c1

If ♖xb3, ♙a1. If ♖b1, ♙xb1.

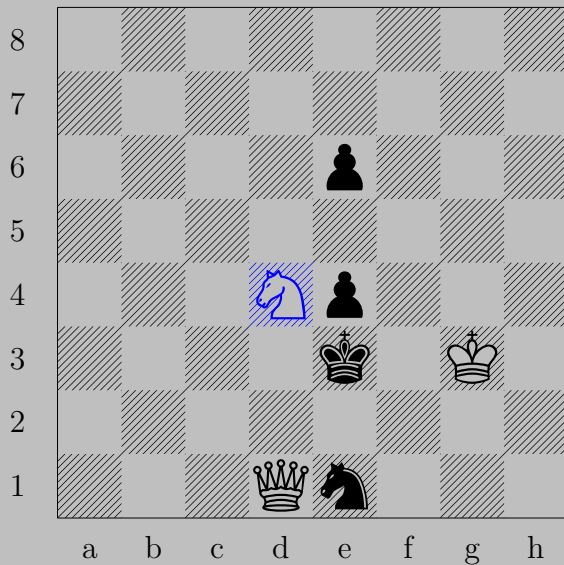
Otherwise, ♙b1.

1505



V. Babichev, 1972/73

1505

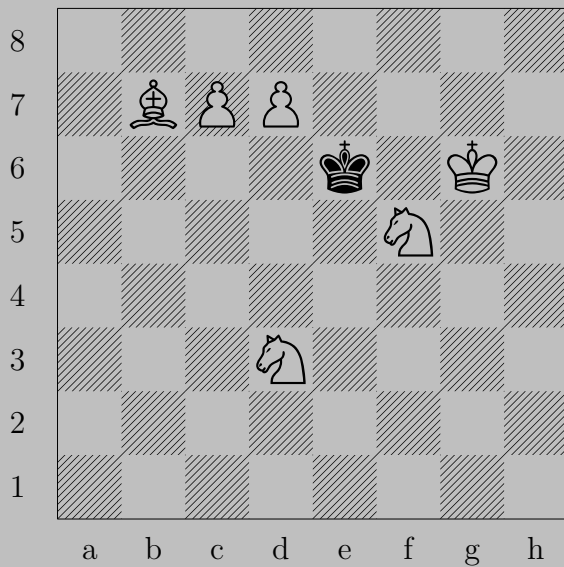


♞d4

If ♞e5 , ♞f5 .

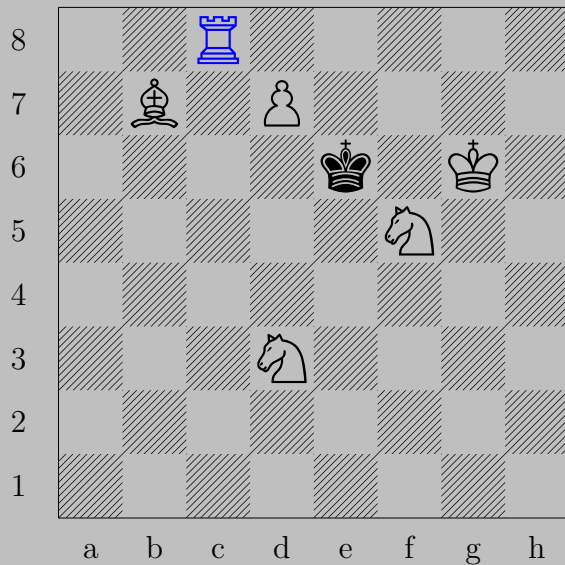
Otherwise, ♞c2 .

1506



E. Backe, 1985

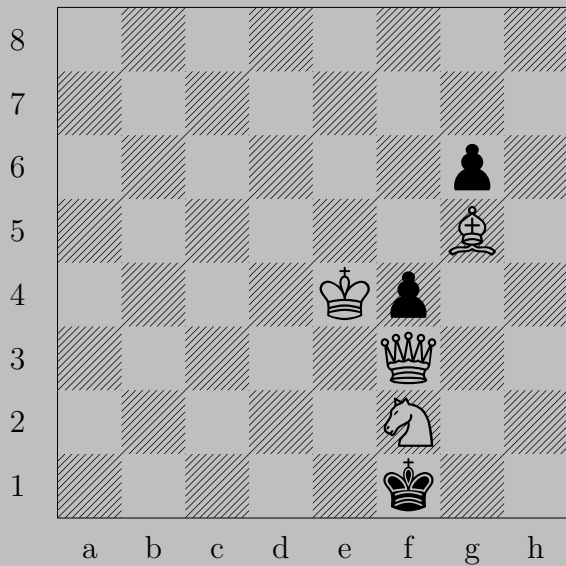
1506



$\text{♗c8}(\text{♖}), \text{♔xd7}$

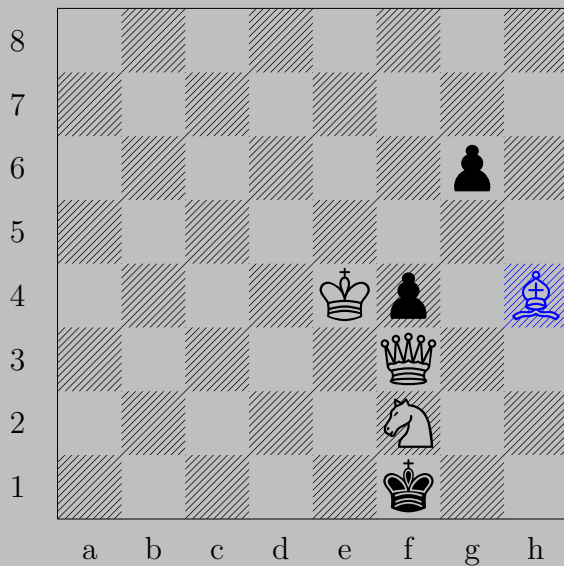
♘c5

1507



E. Backe, 1969

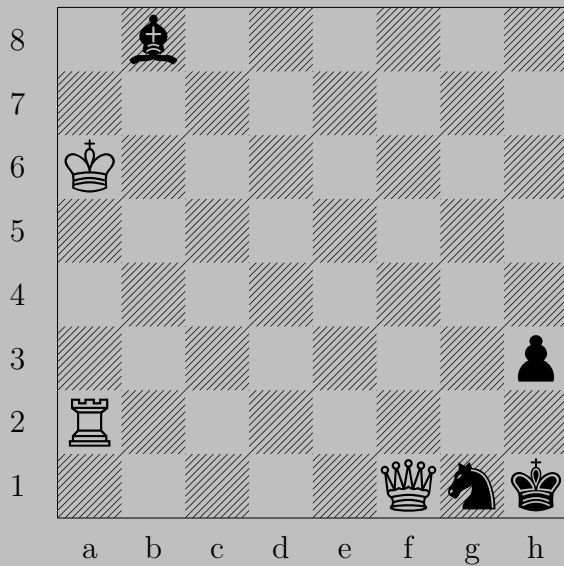
1507



♞h4

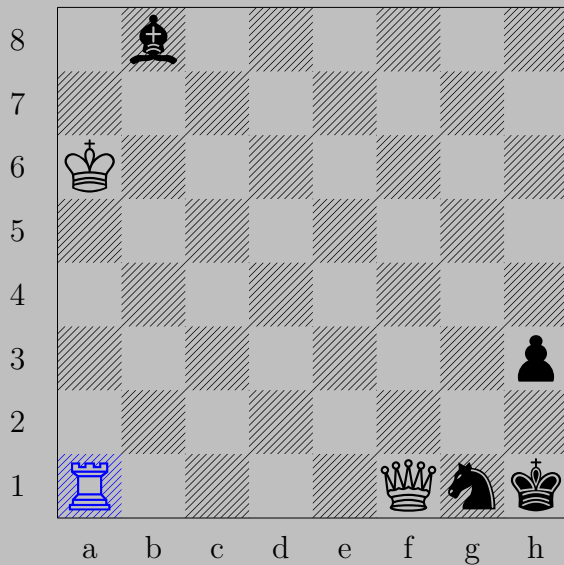
If ♔e1 , ♚d1 . If ♔g1 , ♚h1 . If ♖g5 , ♗h3 .

1508



E. Backe, 1969

1508

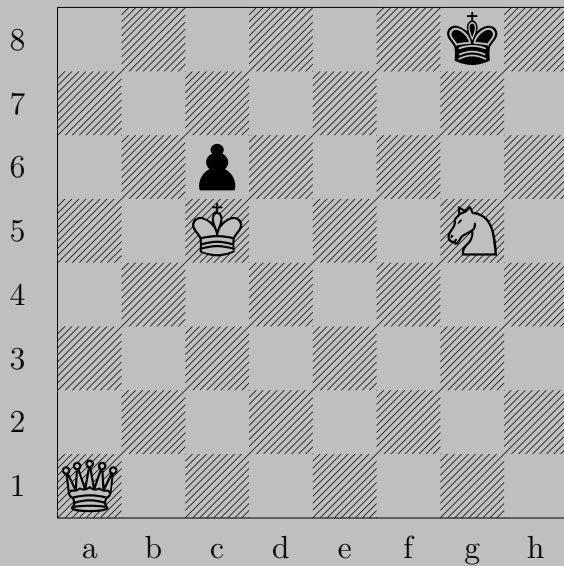


♖a1

If ♜h2 or ♞h2 , ♚f3 . If ♞a7 , ♚xh3 .

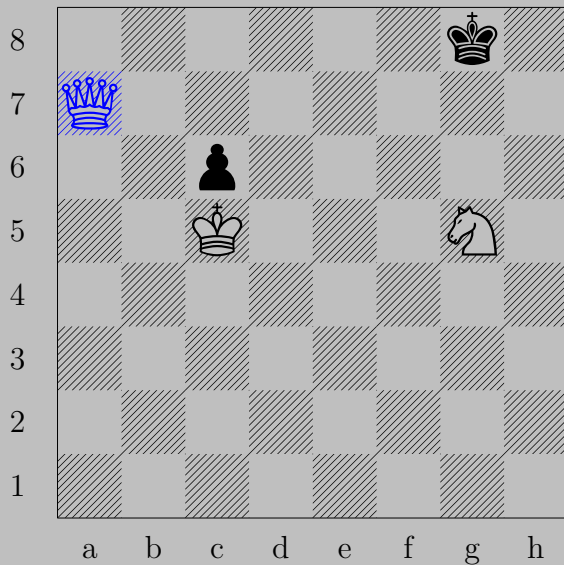
Otherwise, ♚xg1 .

1509



E. Backe, 1967

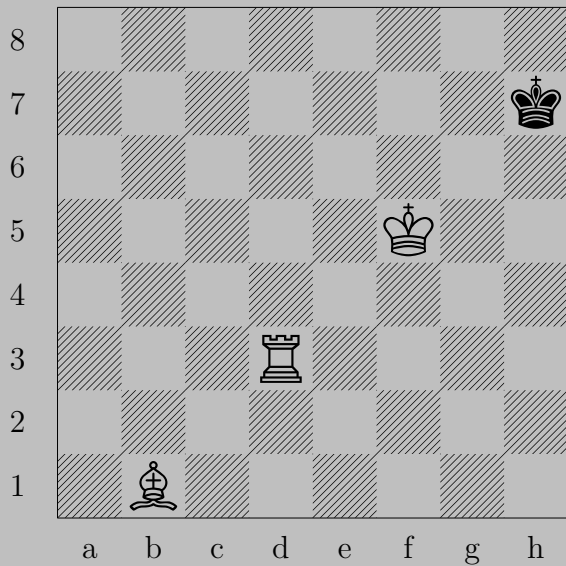
1509



♙a7

If ♚f8, ♙f7. If ♚h8, ♙h7.

1510



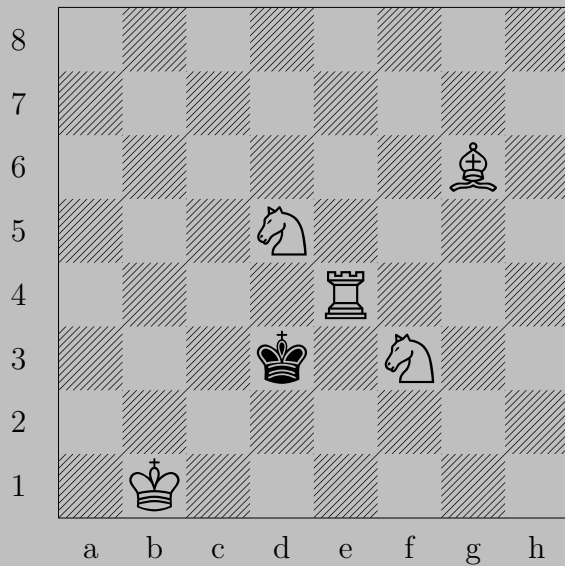
Mrs. W. J. Baird, 1924

1510



♔f6

If ♔h6, ♖h3. If ♔h8 or ♔g8, ♖d8.

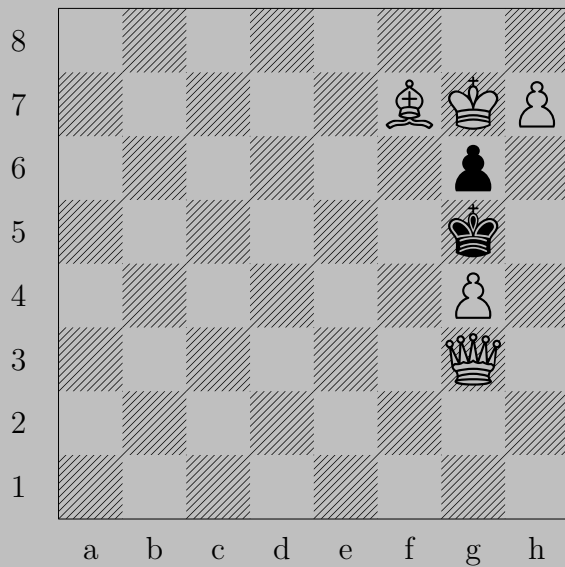


1511



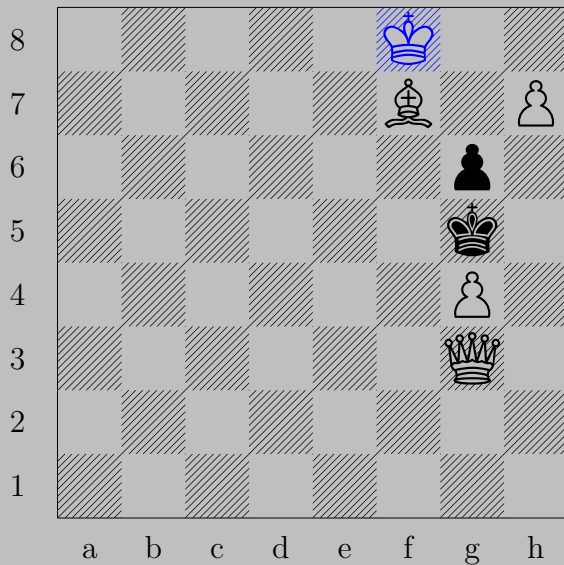
♔a2, ♔c3
♖e4

1512



Mrs. W. J. Baird, 1907

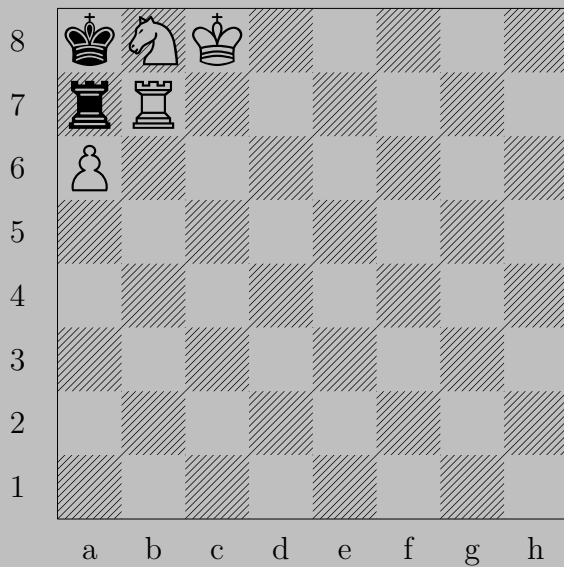
1512



♔f8

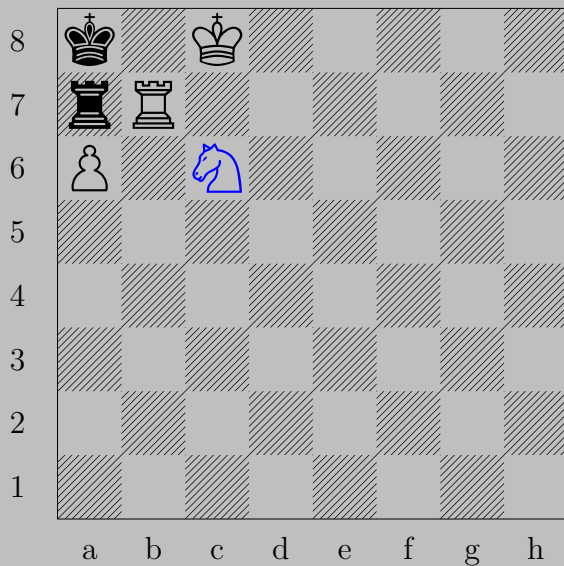
If ♖f6, ♕f4. If ♔h6, ♕h4.

1513



Mrs. W. J. Baird, 1907

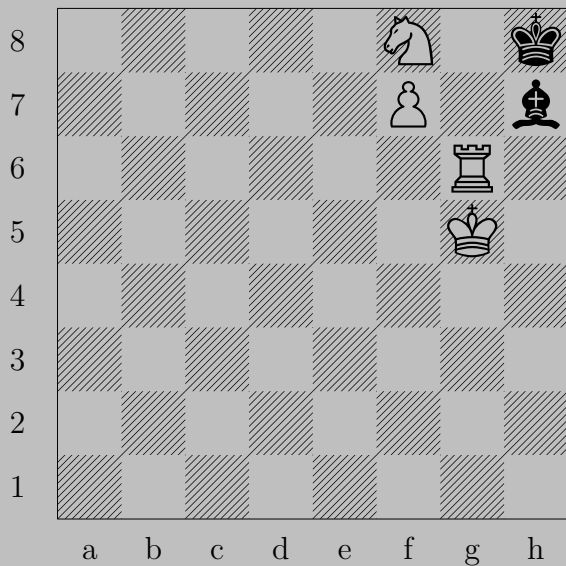
1513



♞c6

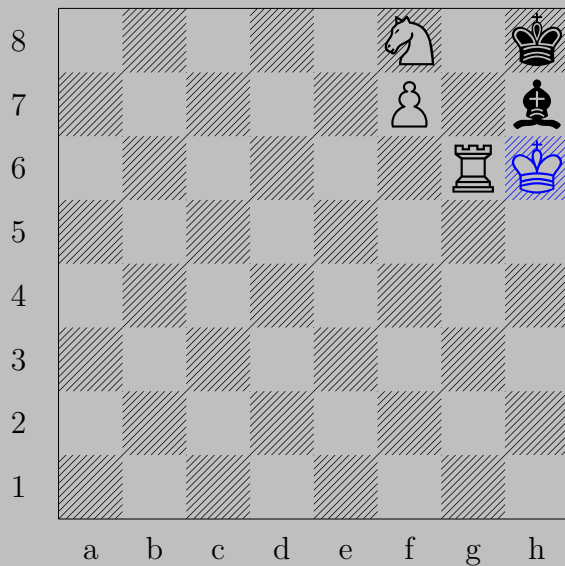
If ♖xb7, ♙xb7. If ♖xa6, ♖b8.

1514



Mrs. W. J. Baird, 1907

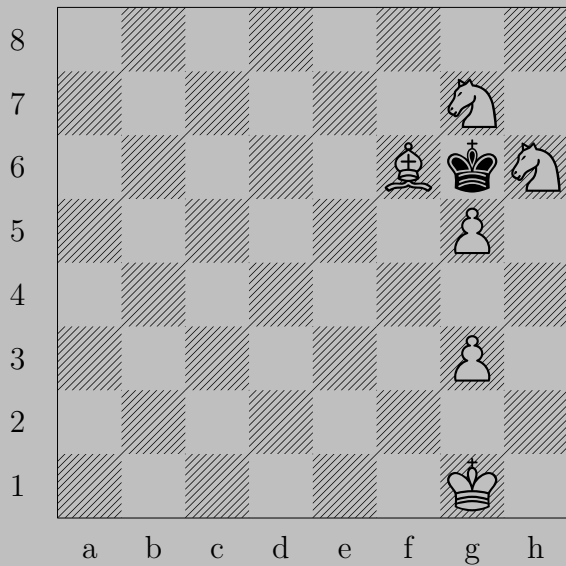
1514



♔h6

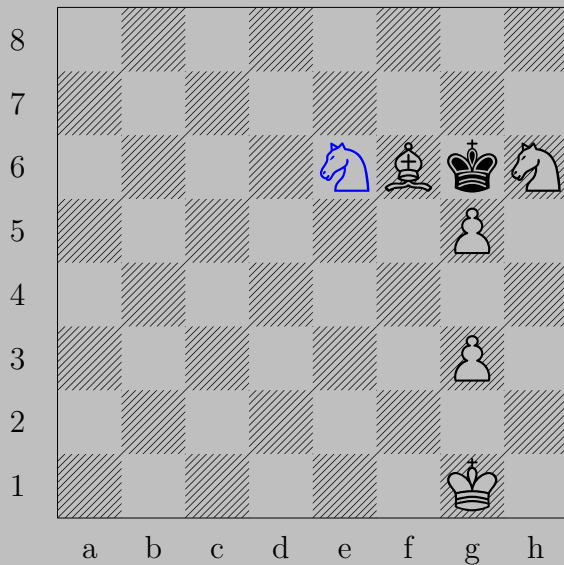
If ♙xg6, ♘xg6. If ♙g8, ♖xg8(♔).

1515



Mrs. W. J. Baird, 1907

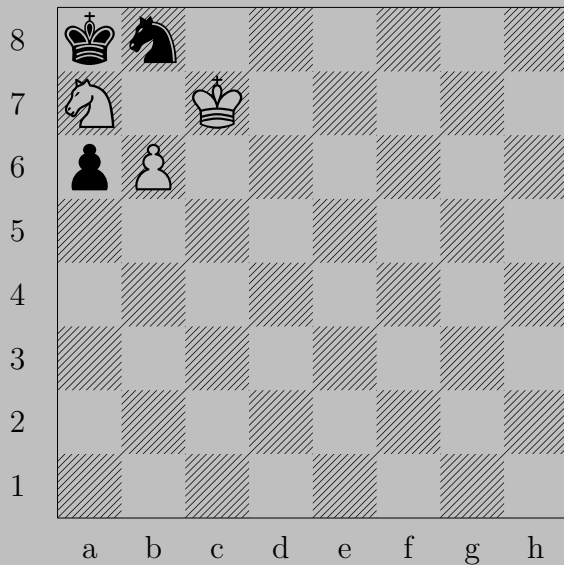
1515



♞e6,

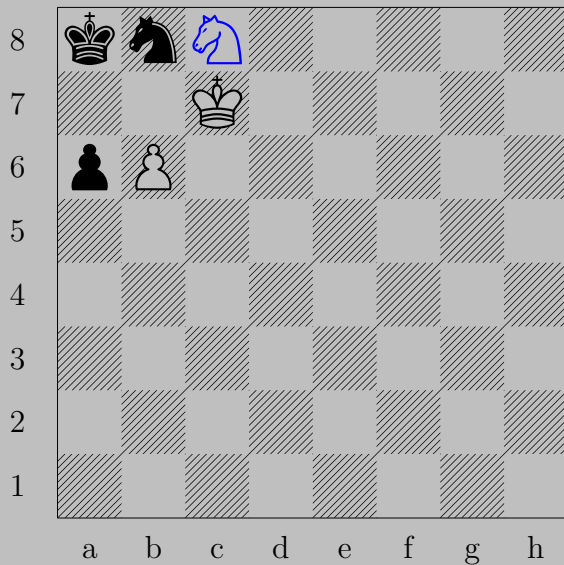
If ♚h7, ♞f8. If ♚h5, ♞f4.

1516



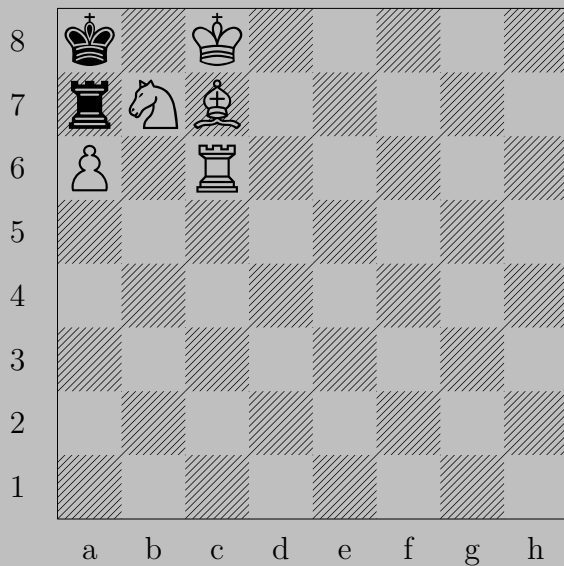
Mrs. W. J. Baird, 1907

1516



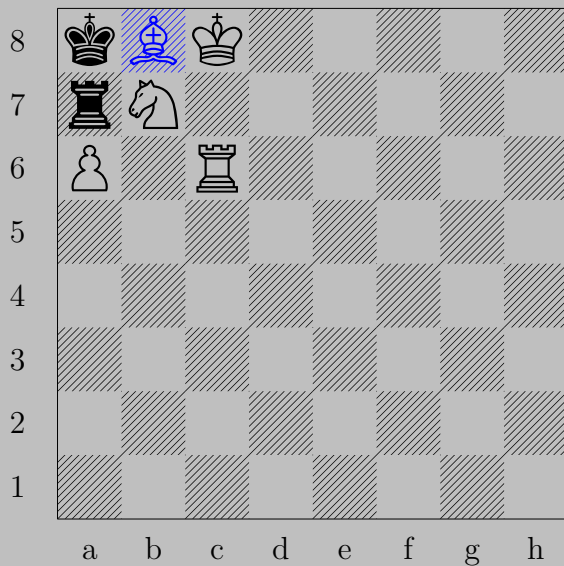
Nc8 , Pa5 or Nc6 or Nd7
 Pb7

1517



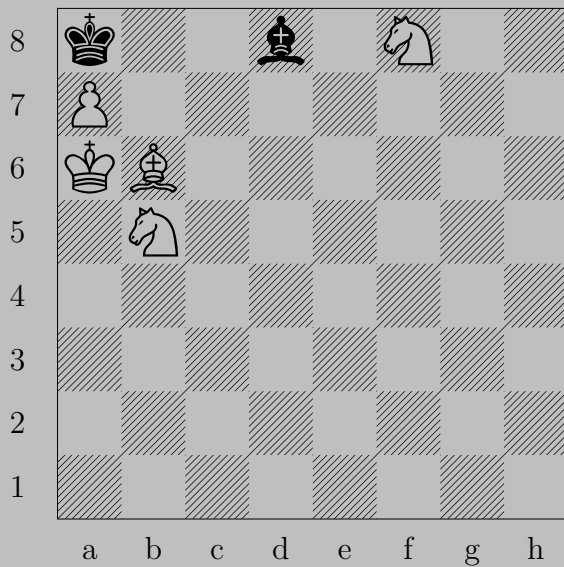
Mrs. W. J. Baird, 1907

1517



♔b8

If ♖xb7, ♙xb7. If ♖xa6, ♖xa6.



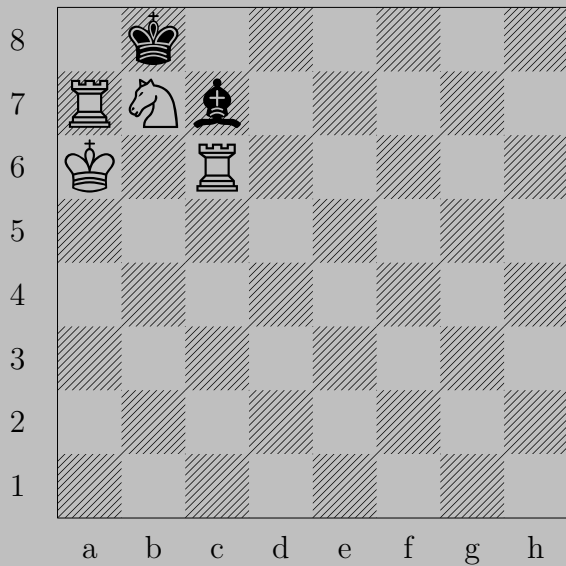
1518



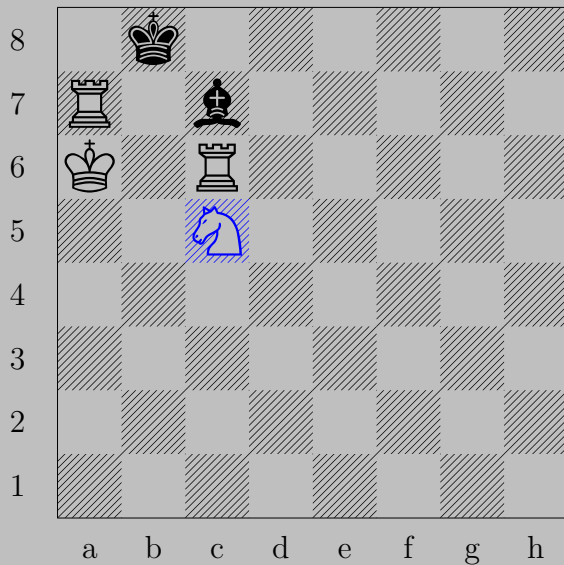
♘d7

If ♚×b6, ♘×b6.

Otherwise, ♘c7.



1519

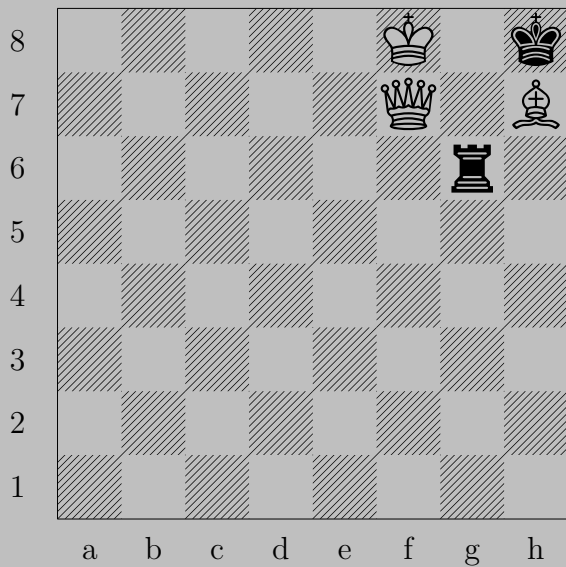


♞c5

If ♞c8 , ♖a8 .

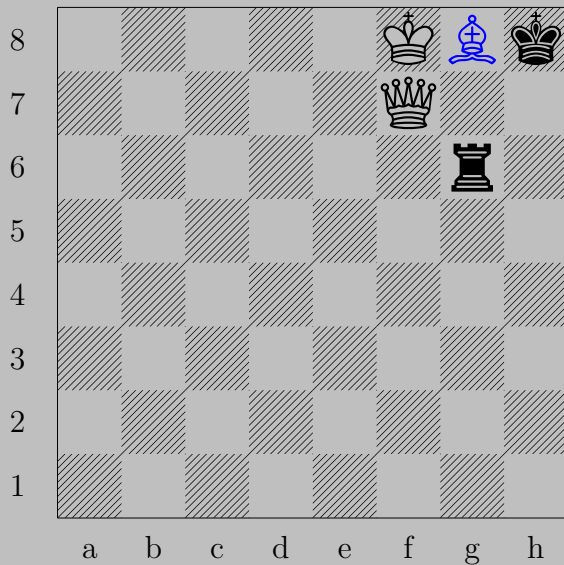
Otherwise, ♞d7 .

1520



Mrs. W. J. Baird, 1907

1520

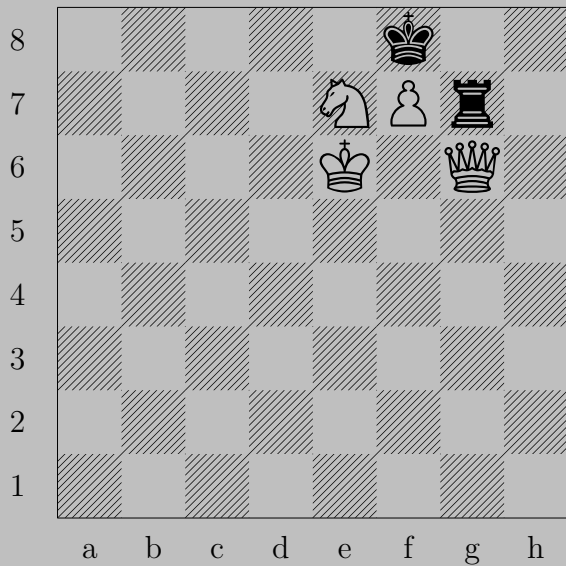


♔g8

If ♖xg8 , ♚xg8 . If ♖f6 , ♚xf6 . If ♖g7 , ♚xg7 . If ♖h6 , ♚g7 .

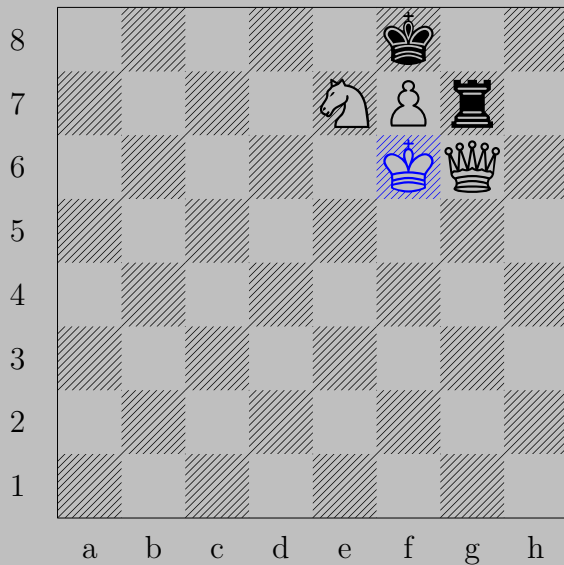
Otherwise, ♚h7 .

1521



Mrs. W. J. Baird, 1907

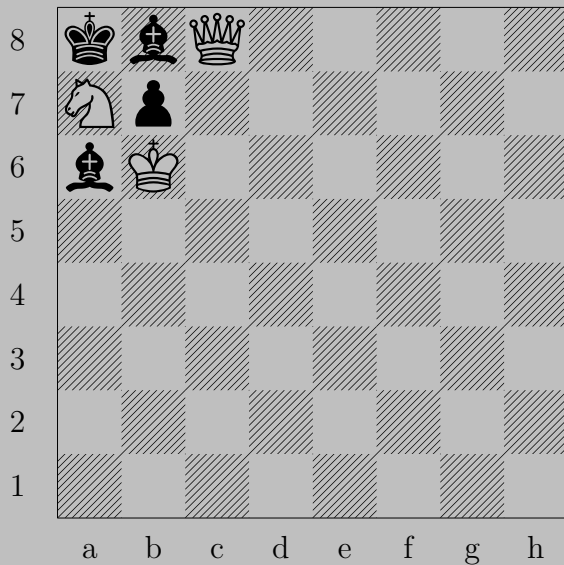
1521



♔f6

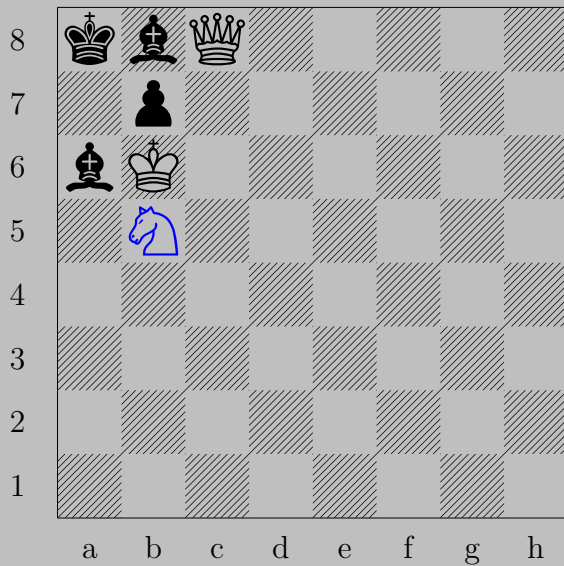
If ♖xg6, ♞xg6. If ♖xf7, ♚xf7. If ♖h7, ♚g8. If ♖g8, ♙xg8(♚).

1522



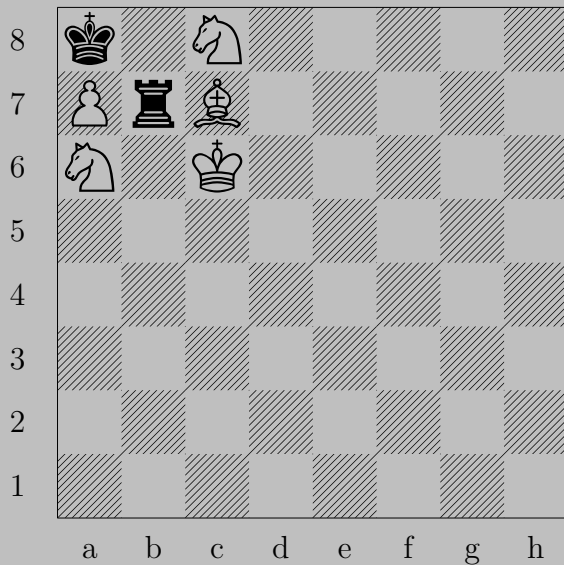
Mrs. W. J. Baird, 1907

1522

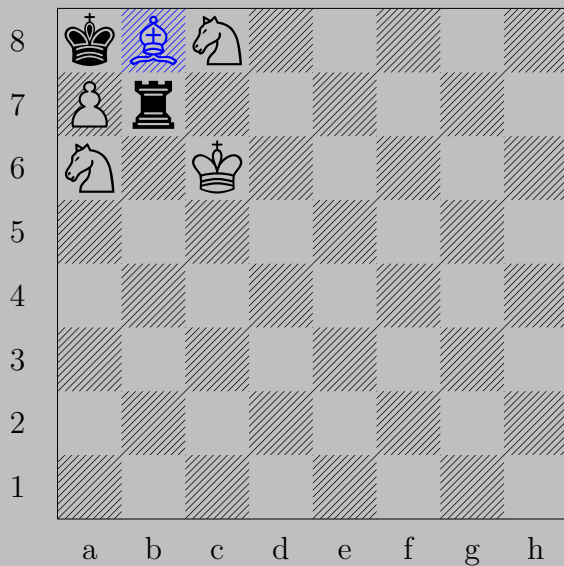


♞b5, ♜x b5
 ♚x b7

1523



Mrs. W. J. Baird, 1907

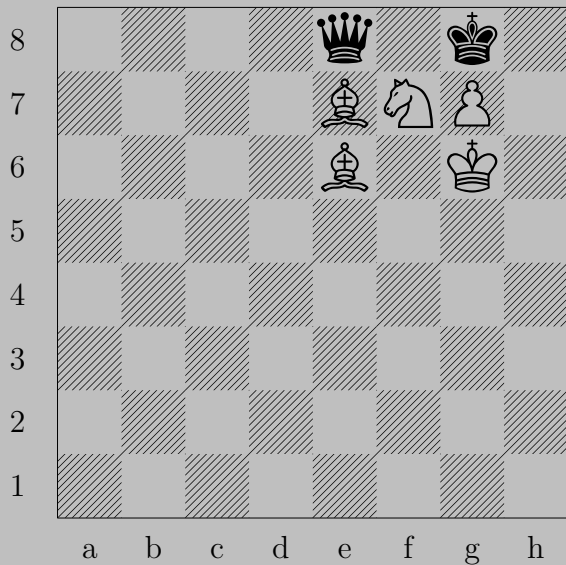


♔b8

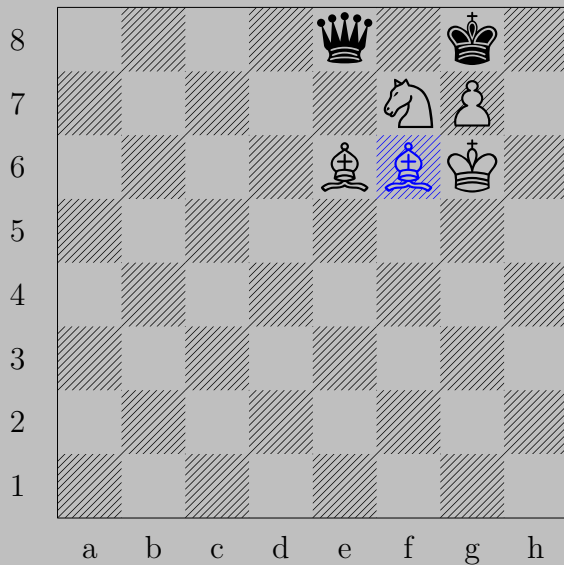
If ♖b6!, ♗×b6. If ♜c7!, ♗×c7. If ♜×a7 or ♜d7-h7, ♗b6.

If ♜×b8 or ♜b1-b5, ♗c7.

1524



Mrs. W. J. Baird, 1907

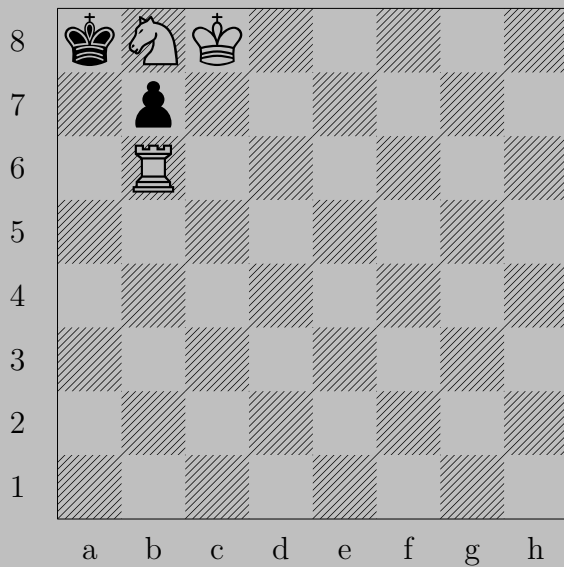


♙f6

If ♚×f7!, ♙×f7.

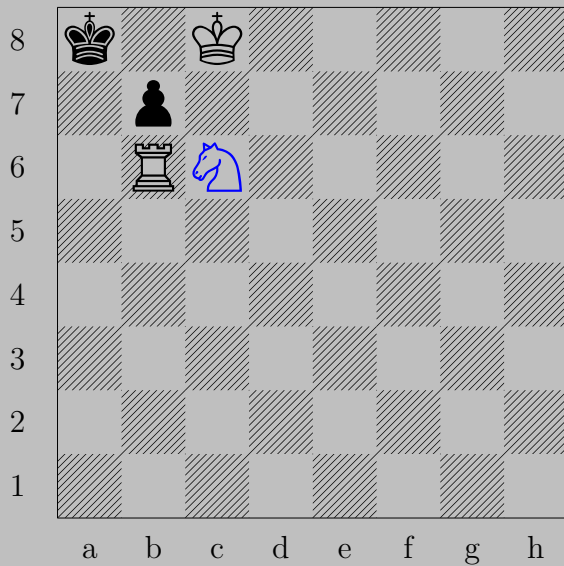
Otherwise, ♘h6.




1525

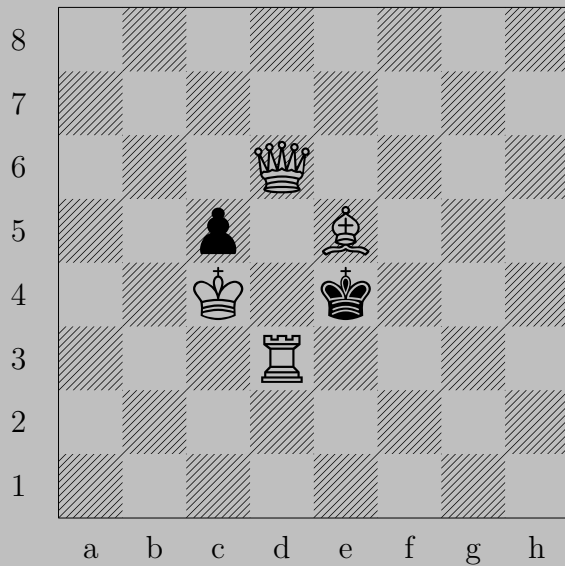


Mrs. W. J. Baird, 1907

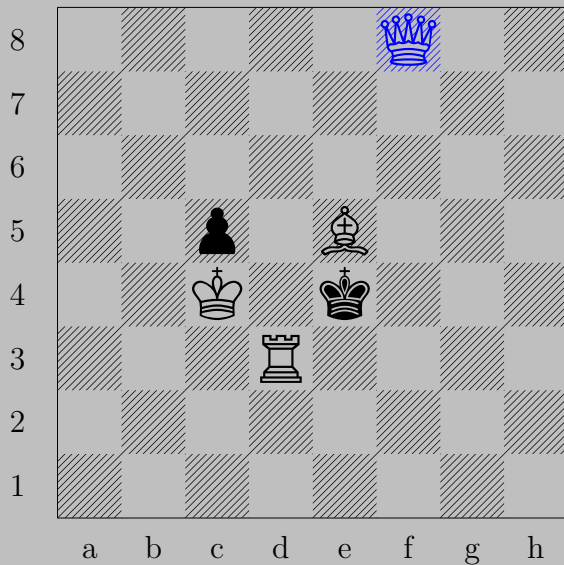
1525






c6, x6
a6

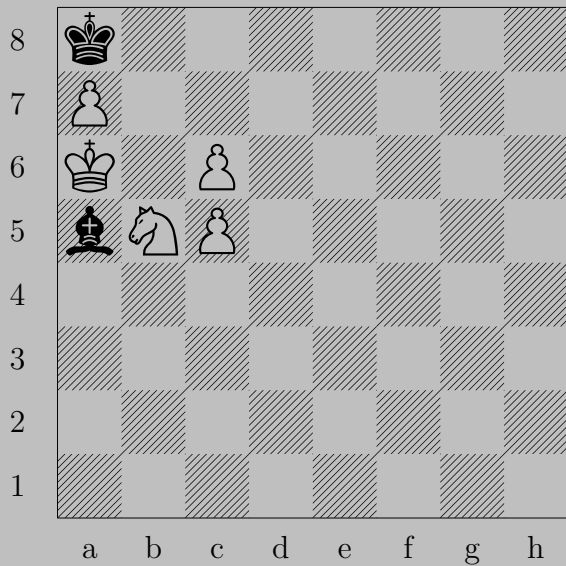


1526



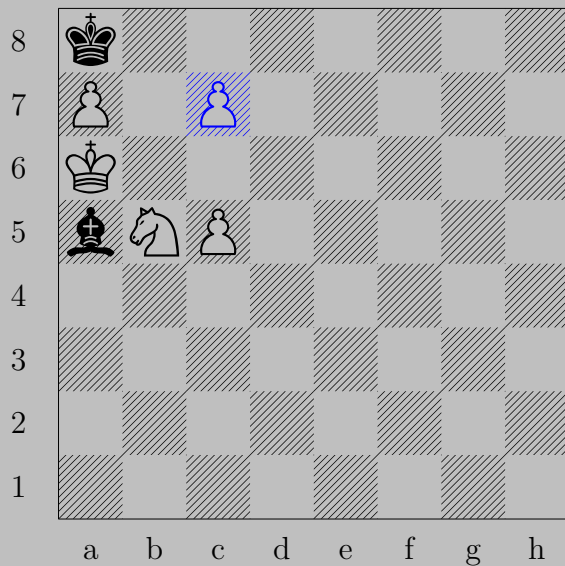
f8, x e5
e3

1527



Mrs. W. J. Baird, 1907

1527

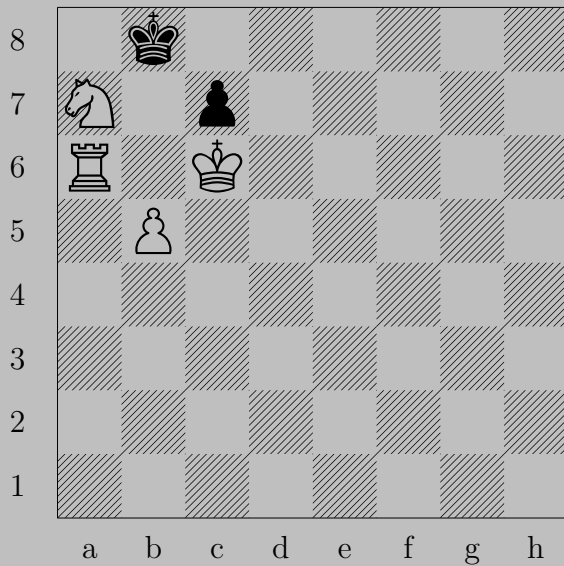


♞c7

If ♞xc7 , ♘xc7 .

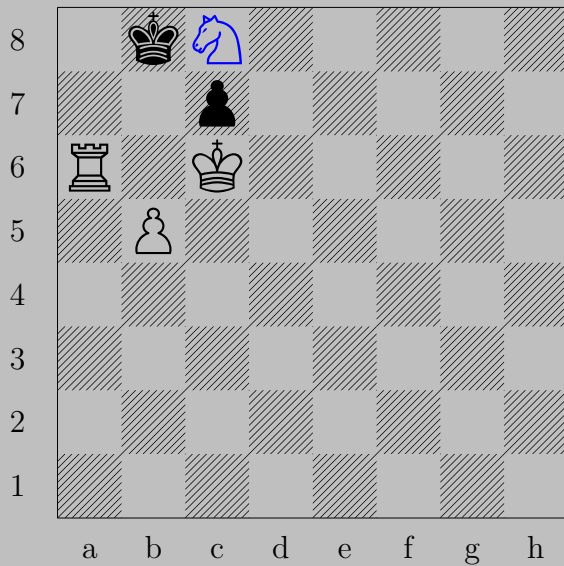
Otherwise, ♞c8 (♞)

1528



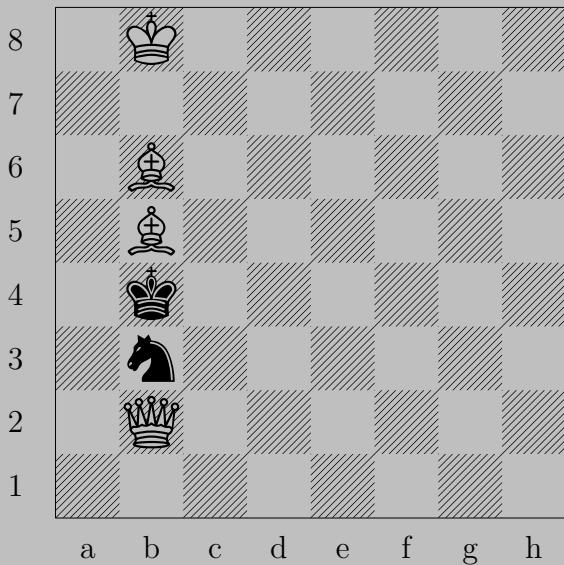
Mrs. W. J. Baird, 1907

1528



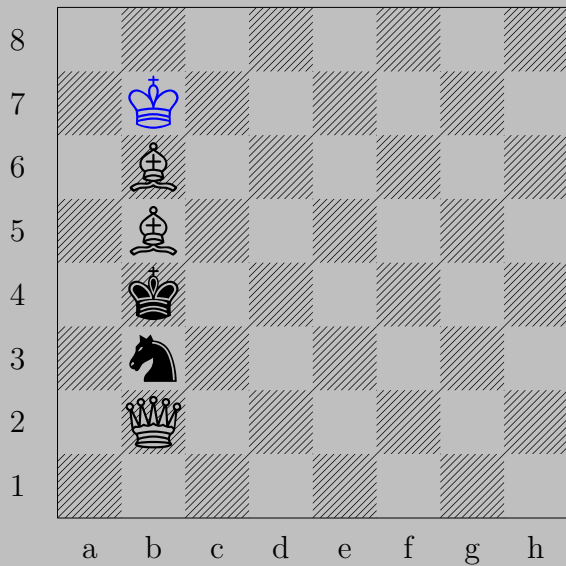
$\text{♞c8}, \text{♔xc8}$
 ♖a8

1529



Mrs. W. J. Baird, 1907

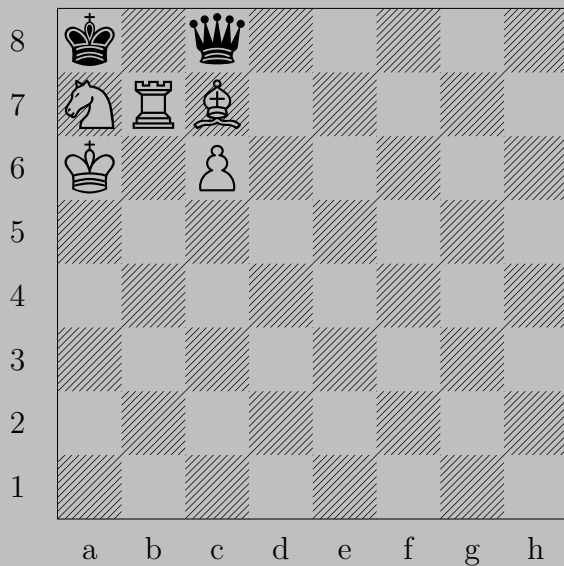
1529



♔b7, ♔×b5

♕×b3

1530



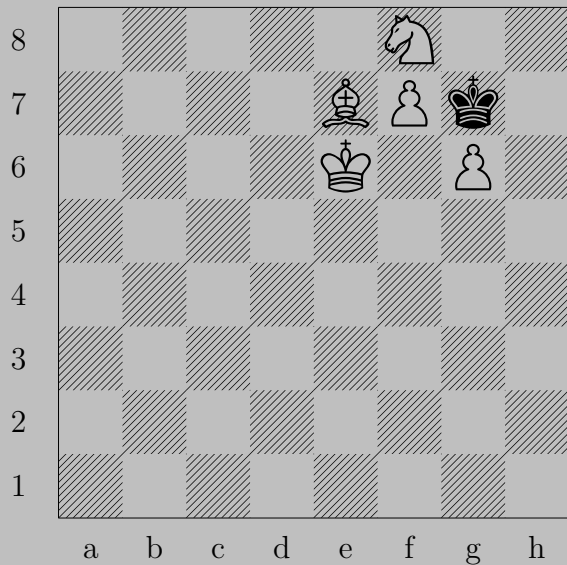
Mrs. W. J. Baird, 1907



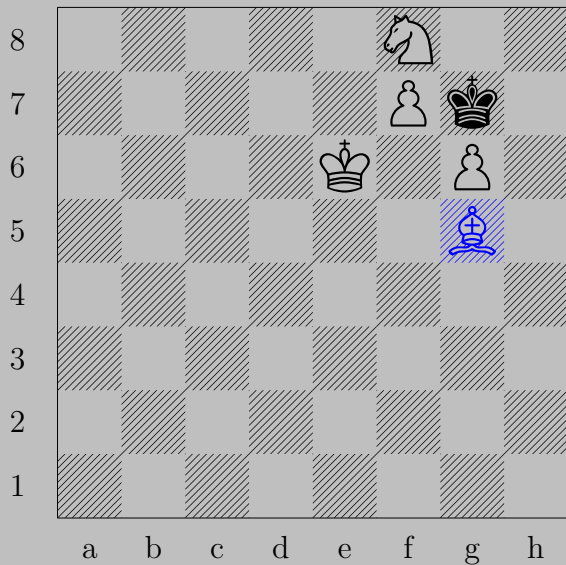
♞b5

If $\text{♚}\times\text{b7}$, $\text{♙}\times\text{b7}$. If $\text{♚}\times\text{c7}$, $\text{♞}\times\text{c7}$. If ♚b8 , $\text{♖}\times\text{b8}$.

Otherwise, ♖a7 .



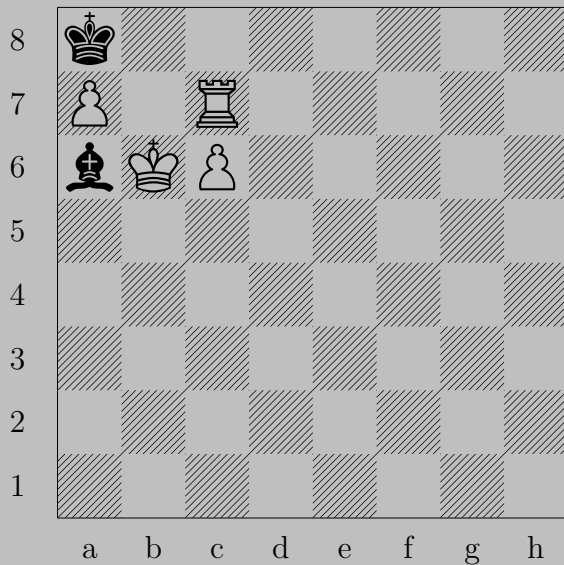
1531



♘g5

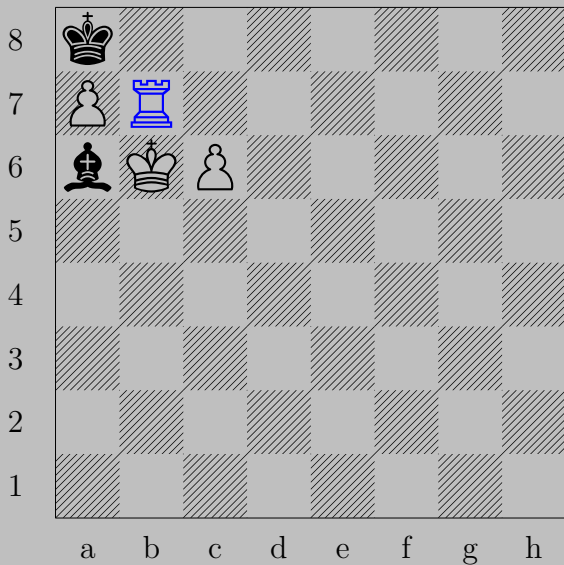
If ♔×f8, ♘h6. If ♔h8, ♘f6.

1532



Mrs. W. J. Baird, 1907

1532

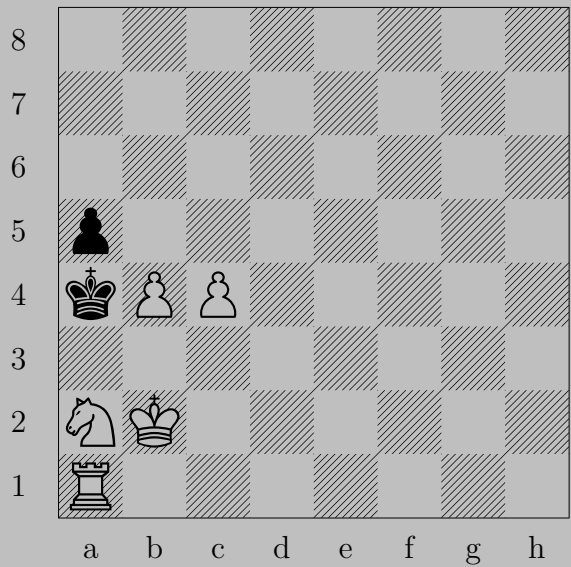


♖b7

If ♔×b7, ♙×b7.

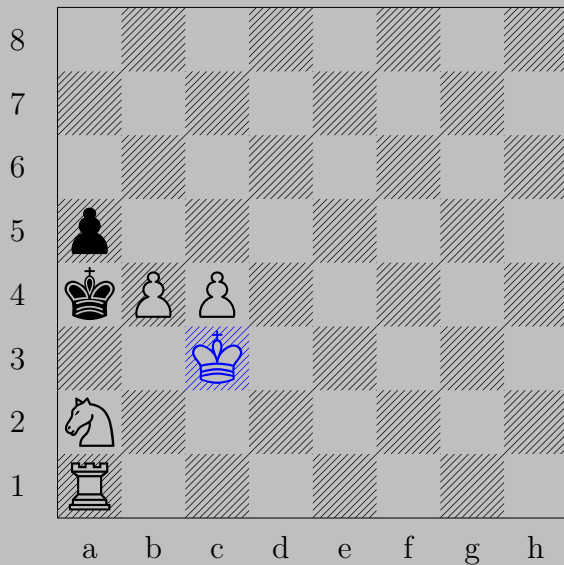
Otherwise, ♖b8.

1533



J. Bajtay, 1926

1533



♔c3

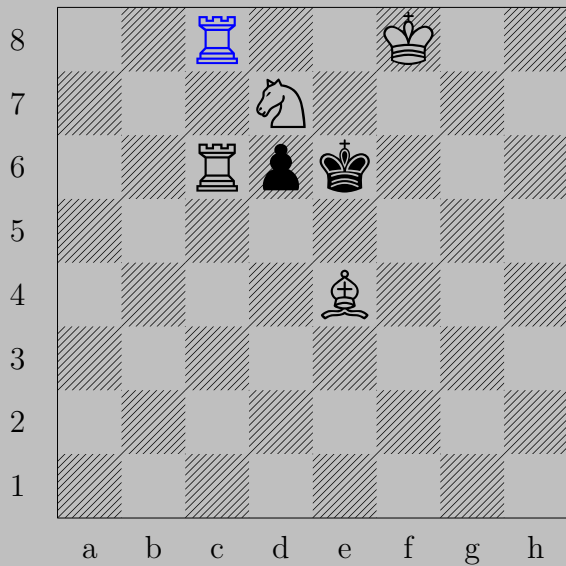
If ♖xb4!, ♜xb4. If ♔a3, ♜c1.

1534



J. Bajtaj, 1934

1534



$\text{♖c8}(\text{♖}), \text{♔}\times\text{d7}$

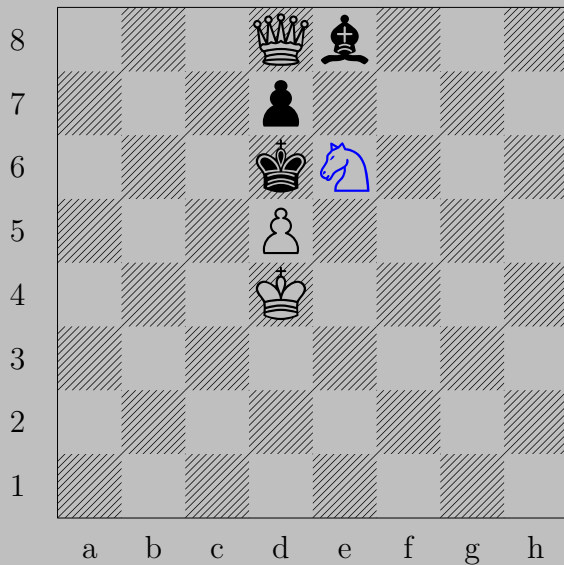
♗f5

1535



J. Bajtay, 1926

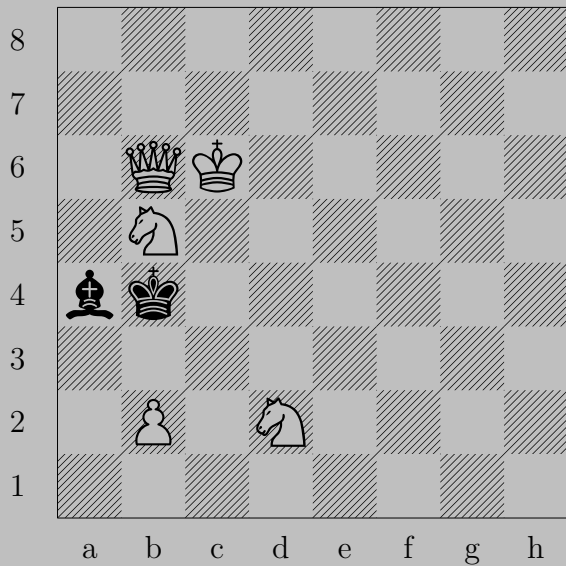
1535



♞e6, ♜f7-h5

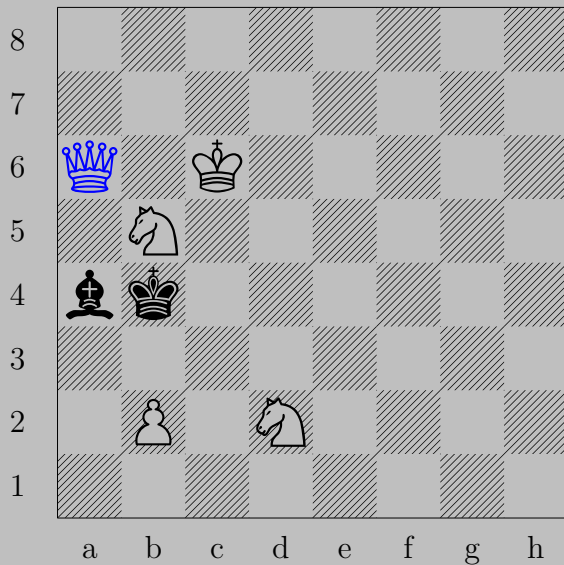
♚f8

1536



J. Bakay, 1932

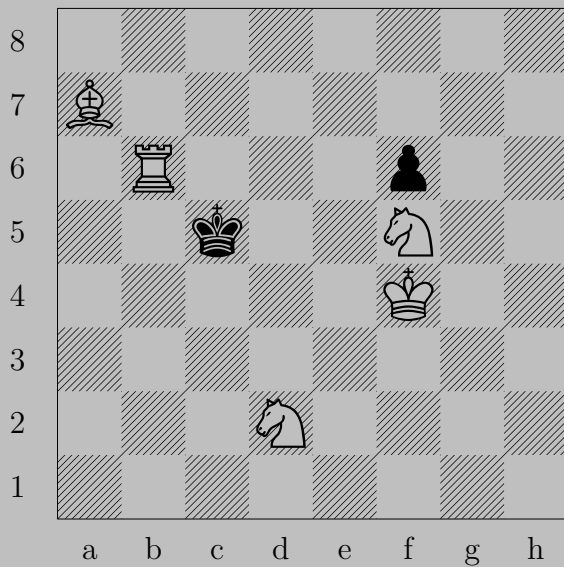
1536



♔a6, ♙x♚b5!

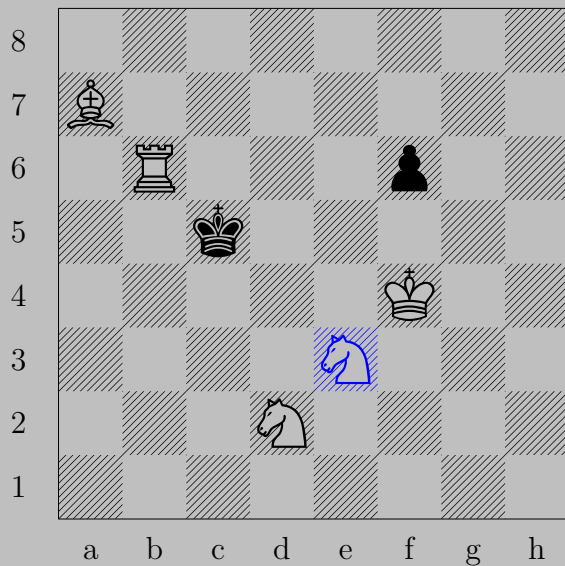
♔x♙b5

1537



J. Bakay, 1932

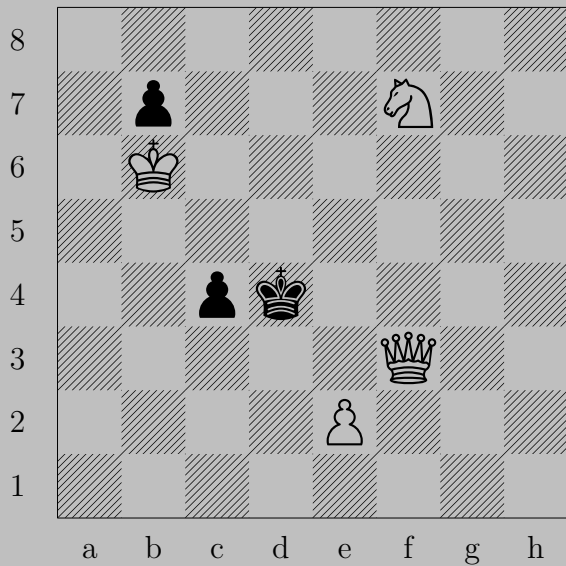
1537



♞e3

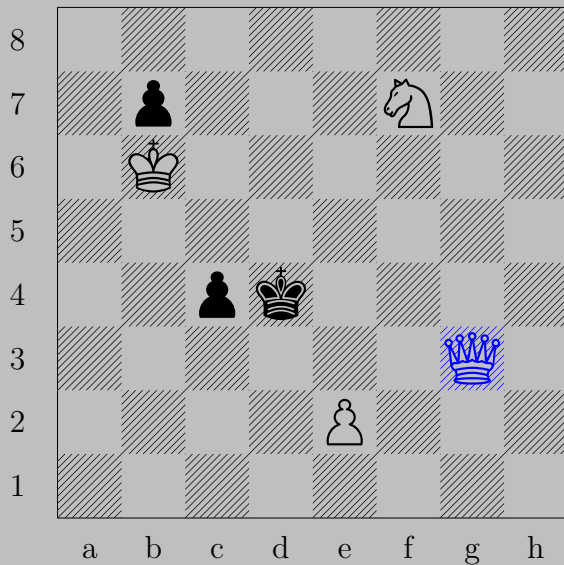
If ♖f5, ♜b3. If ♔d4, ♖b3.

1538



J. Bakay, 1931

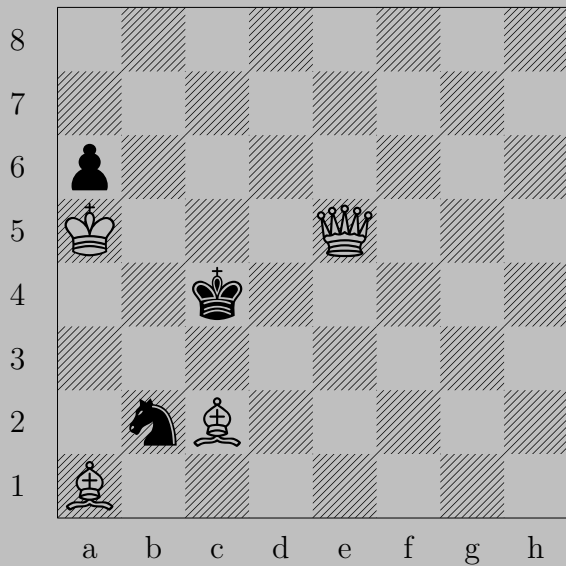
1538



♔g3

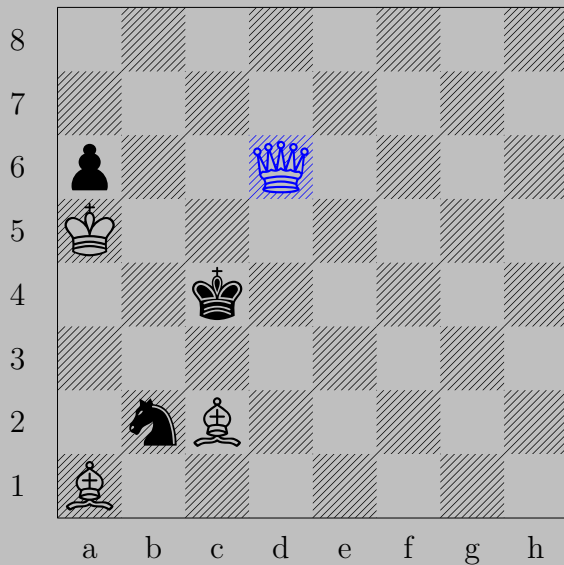
If ♘c3, ♕d3. If ♔d5 or ♔e4, ♕e5.

1539



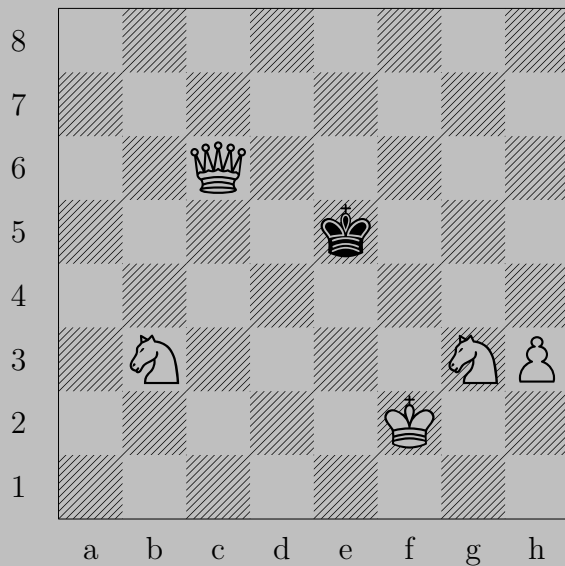
J. Bakay, 1931

1539



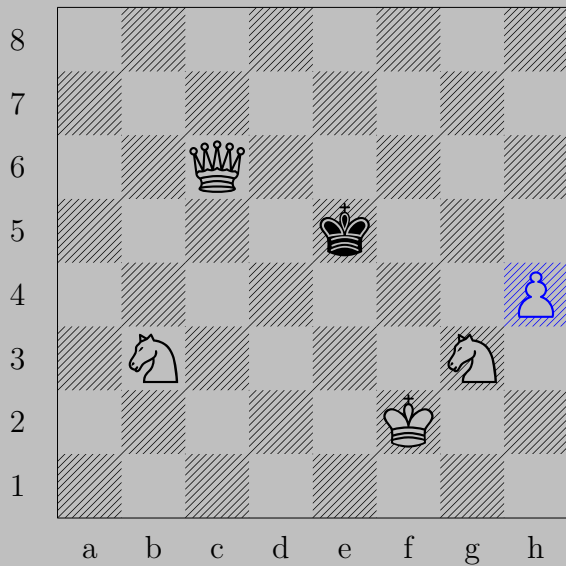
♔d6
if ♔c3 , ♔d6 .
Otherwise, ♔d4 .

1540



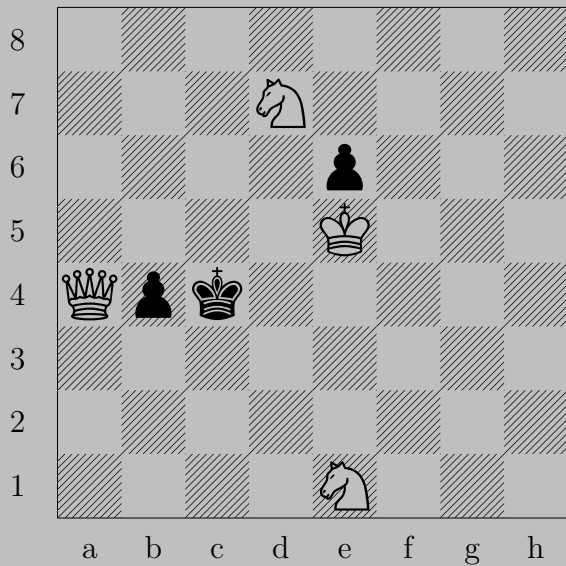
J. Bakay, 1931

1540



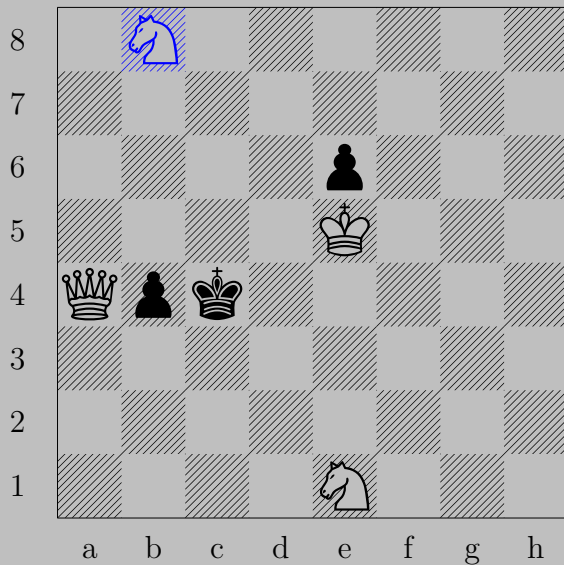
♖h4, ♚f4
♙e4

1541



J. Bakay, 1931

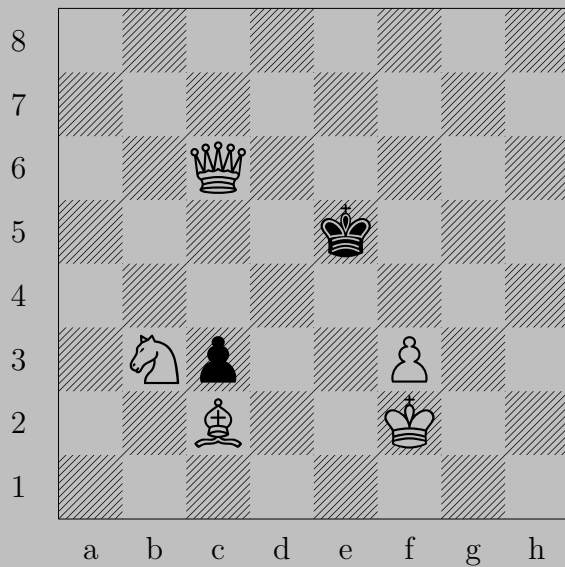
1541



N_b8

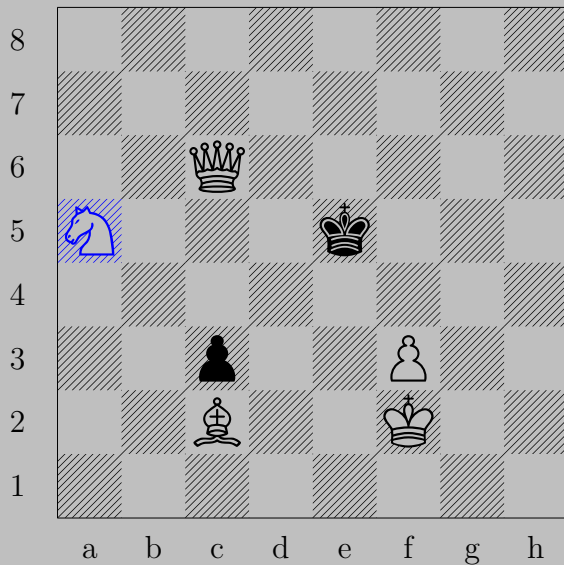
If K_c3 , Q_c2 . If K_c5 , Q_c6 .

1542



J. Bakay, 1931

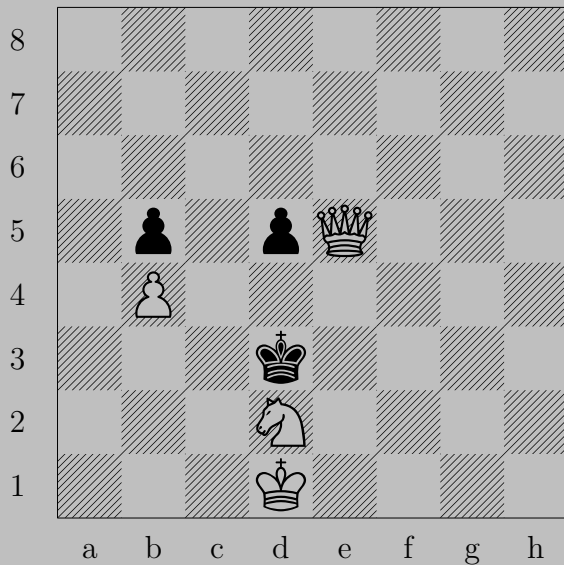
1542



a5

If d4, d6. If f4, f6.

1543



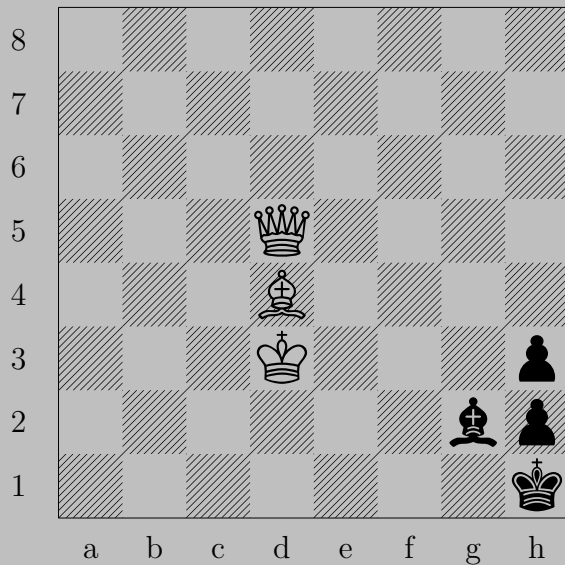
J. Bakay - T. Feldman, 1931

1543



♘b1

If ♔c4, ♔c3. If ♙d4, ♔e2.



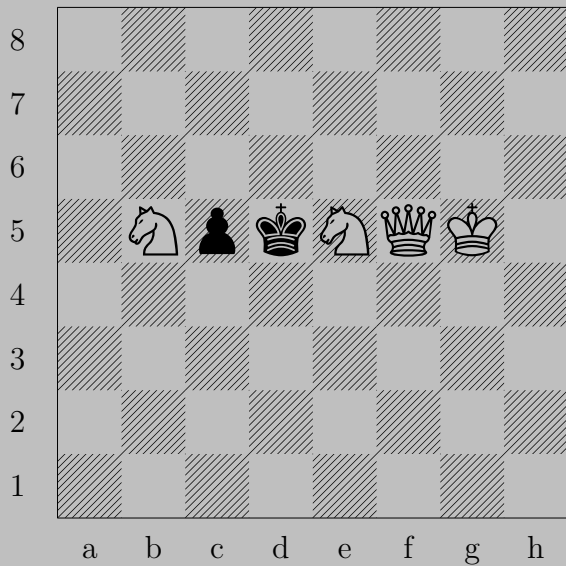


♙f5

If ♘e4!, ♙×e4. If ♘f3, ♙×e3. If ♘f1, ♙×f1.

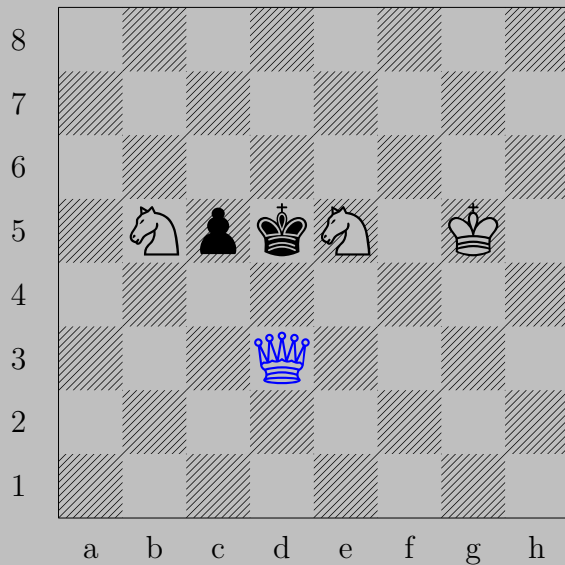
Otherwise, ♙f1.

1545



Gy. Bakcsi, 1973

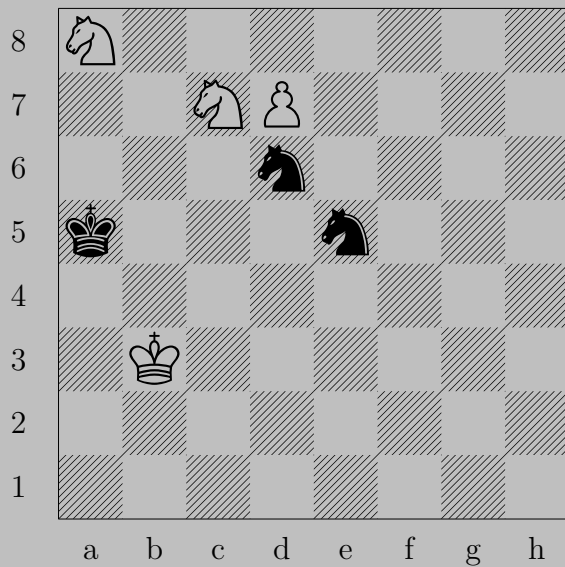
1545



♔d3!

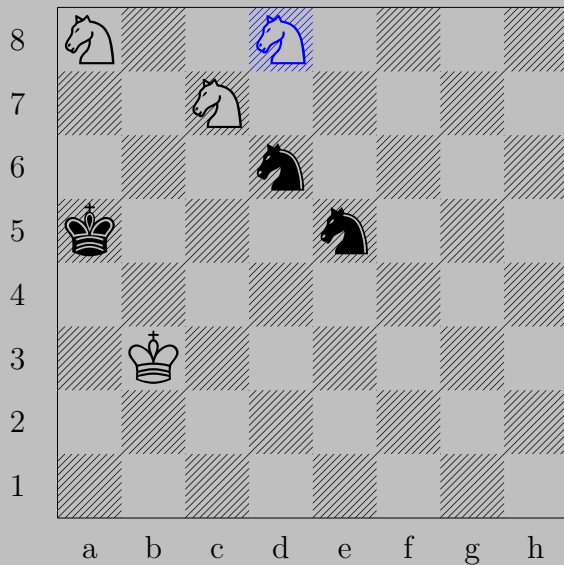
If ♞×e5, ♔f5. If ♞e6, ♔d6.

1546



Gy. Bakcsi, 1990

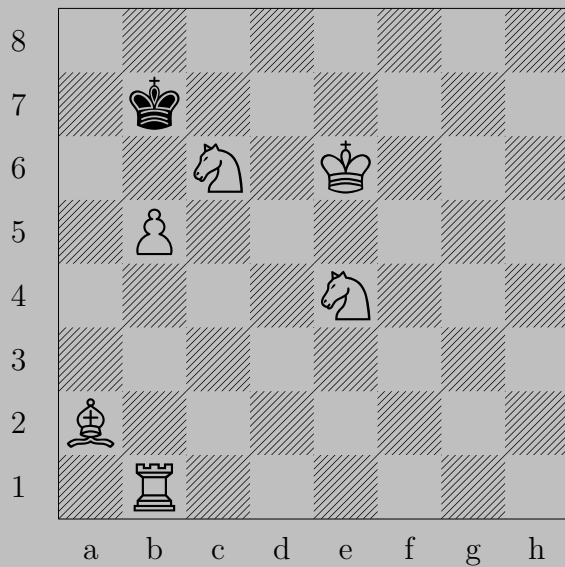
1546



\triangleleft d8(\triangleleft)

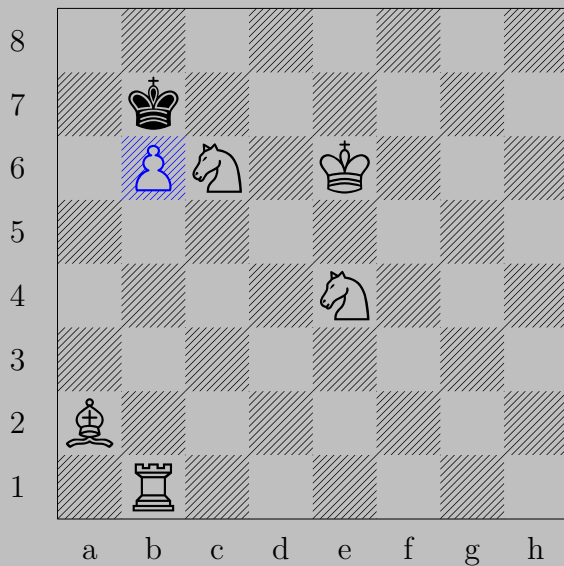
If \triangleleft (d6) anywhere, \triangleleft b7. If \triangleleft (e5) anywhere, \triangleleft c5.

1547



Gy. Bakcsi, 1948

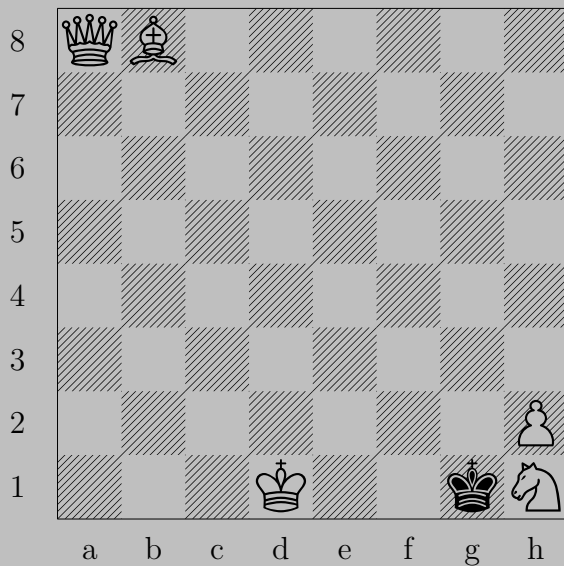
1547



♔b6

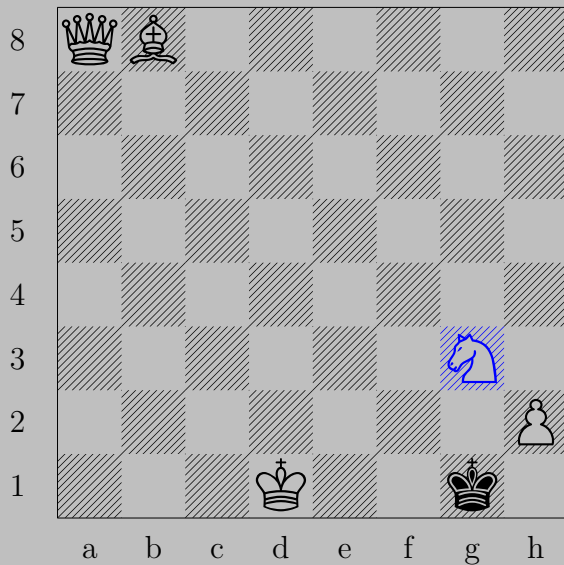
If ♔×c6, ♙d5. If ♔a6, ♘c5. If ♔a8, ♔b7. If ♔c8, ♘d6.

1548



Gy. Bakcsi - L. Zolidn, 1993

1548



Ng3

If Kxh2 , Kh1 . If Kf2 , La7 .

1549



Gy. Bakcsi, 1981/82

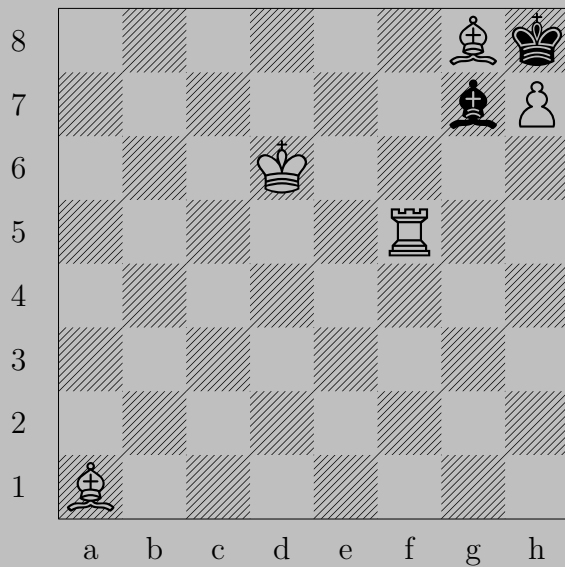
1549



$\text{R}h5$

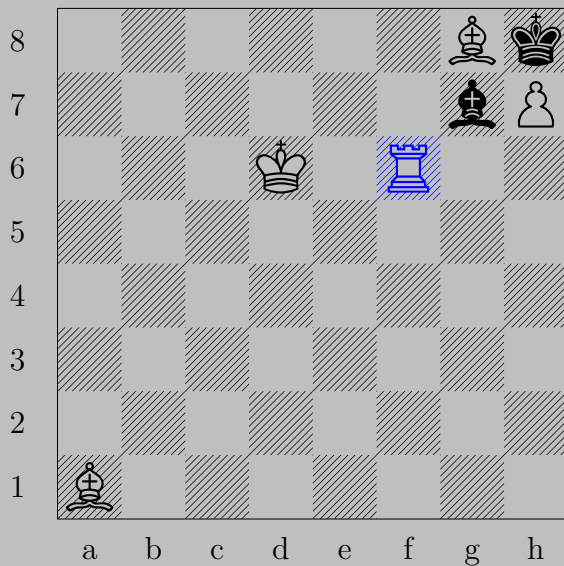
If $\text{N}e3!$, $\text{R}xe3$. If $\text{N}f4$, $\text{R}xf4$. If $\text{N}h4$, $\text{R}(e4)\times h4$.

1550



Gy. Bakcsi, 1982

1550



Rf6

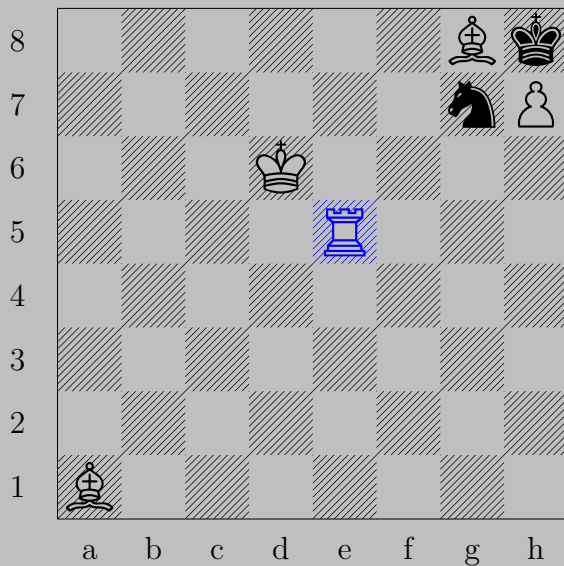
If Kxf6 , Kxf6 . If Kg8! , Rxf8 . If Kg6 , Rfg6 .

1551



Gy. Bakcsi, 1982

1551



$\text{R}e5$

If $\text{N}e8!$, $\text{R}xe8$. If $\text{N}e6$, $\text{R}xe6$. If $\text{N}f5$, $\text{R}xf5$. If $\text{N}h5$, $\text{R}xh5$.

1552



Gy. Bakcsi, 1981/82

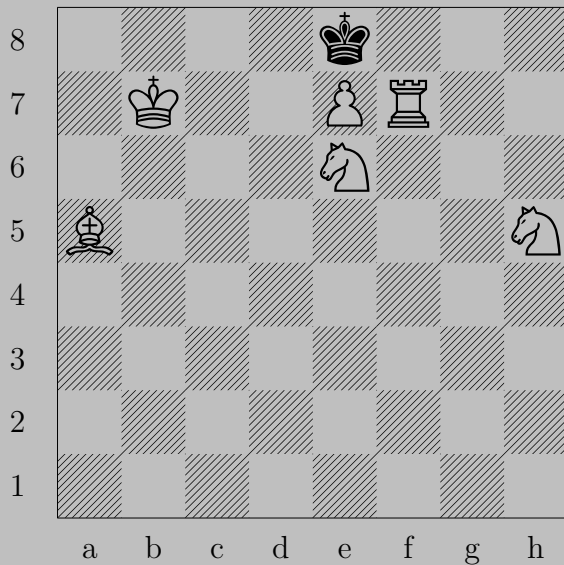
1552



$\text{R}h4$

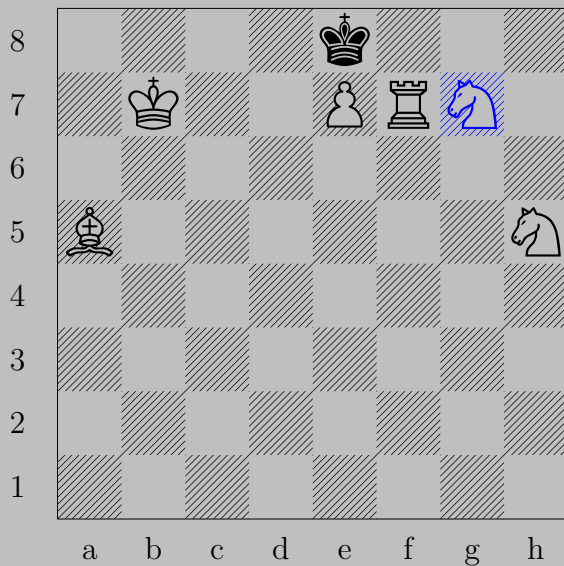
If $\text{N}a5$, $\text{R}xa5$. If $\text{N}c5$, $\text{R}xc5$. If $\text{N}d6$, $\text{R}xd6$. If $\text{N}d8$, $\text{R}xd8$.

1553



Gy. Bakcsi - Á. Molndr, 1961

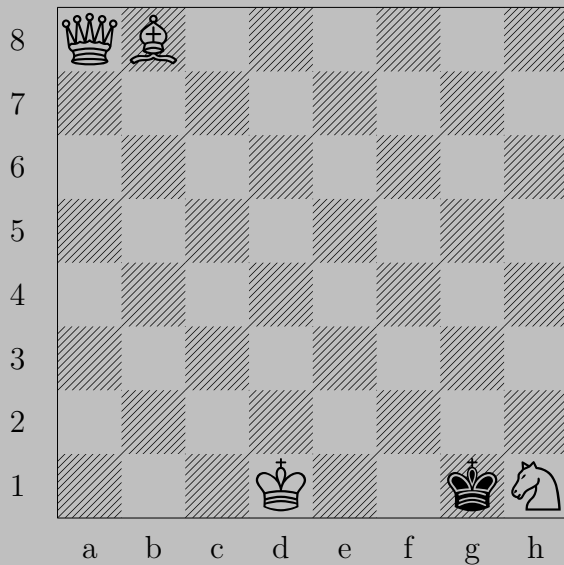
1553



$\text{♞}(e6) g7!$

If $\text{♞} \times f7$, $\text{♞} e8(\text{♞})$. If $\text{♞} d7$, $\text{♞} e8(\text{♞})$.

1554



Gy. Bakcsi - L. Zolidn, 1993

1554



♙a2

If ♔×h1, ♙h2. If ♔f1, ♙f2.

1555



Gy. Bakcsi, 1981

1555

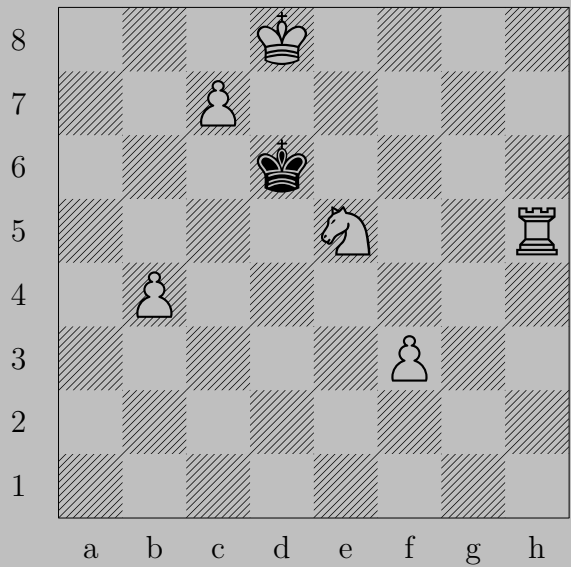


♔c4

If ♕c6!, ♔xc6. If ♕f1, ♔xf1.

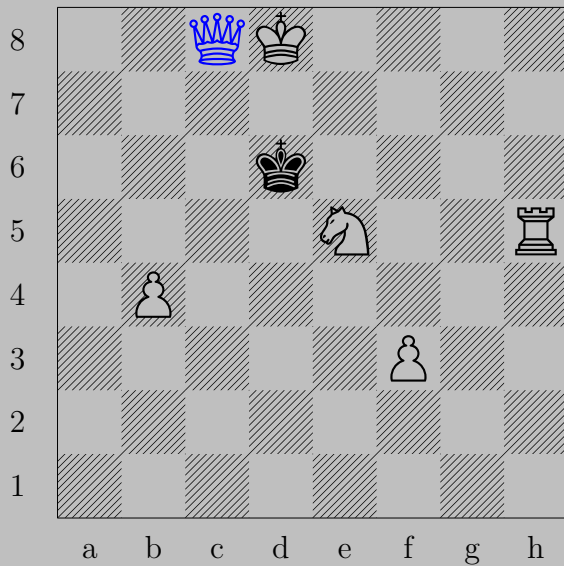
Otherwise, ♔f1.

1556



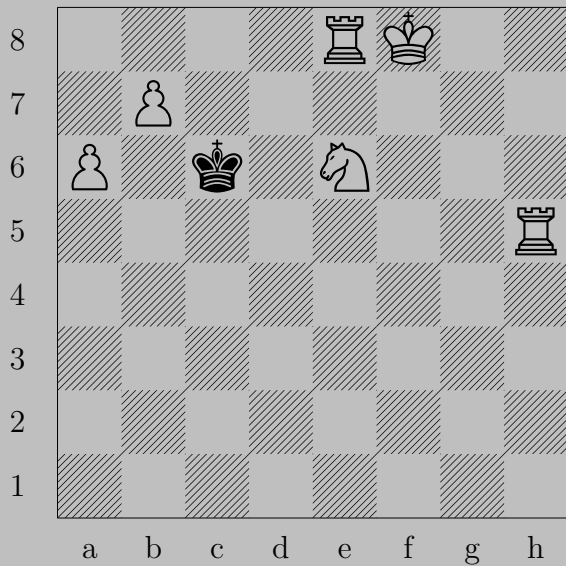
N. A. Bakke, 1972

1556



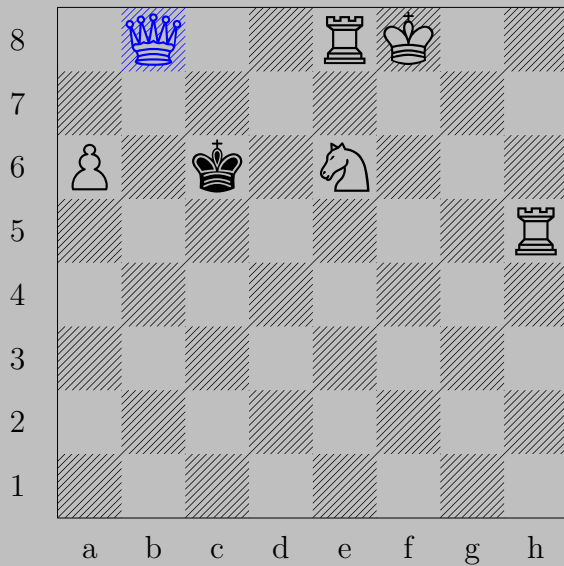
$\text{♔c8}(\text{♑}), \text{♕d5}$
 ♑d7

1557



N. A. Bakke, 1972

1557



$\text{♔b8}(\text{♔}), \text{♔d6}$
 ♔c7

1558



N. A. Bakke, 1990

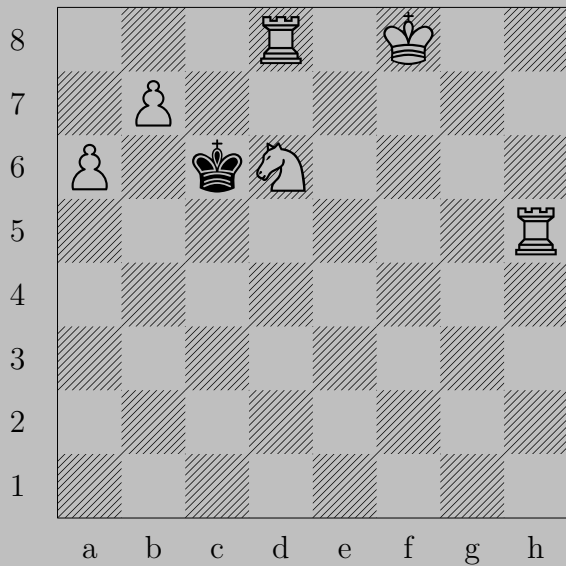
1558



O-O, ♔e4

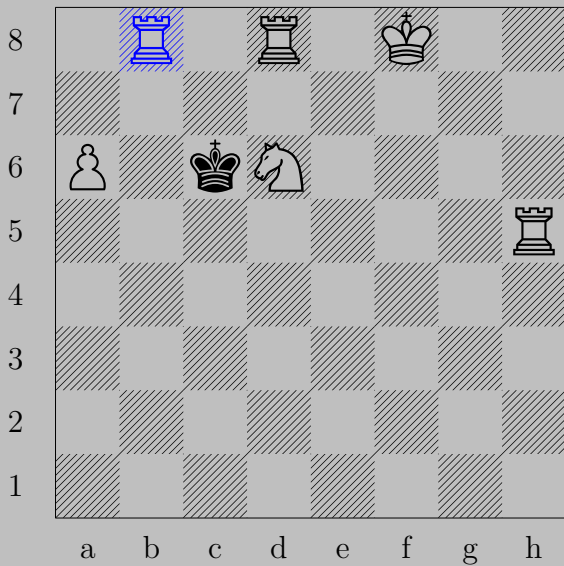
♖(f1) e1

1559



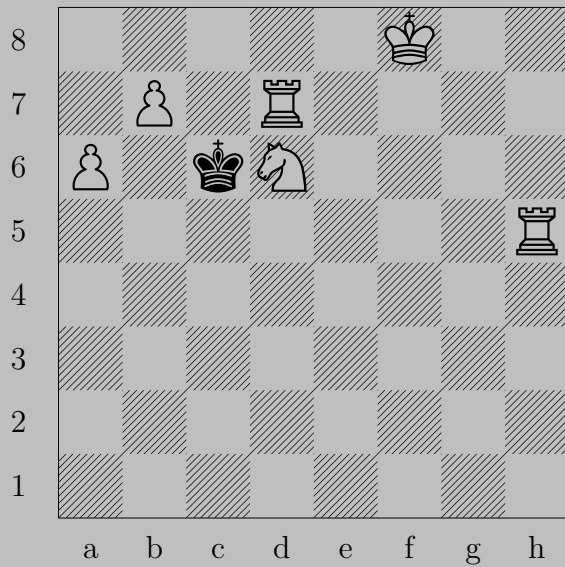
N. A. Bakke, 1972

1559



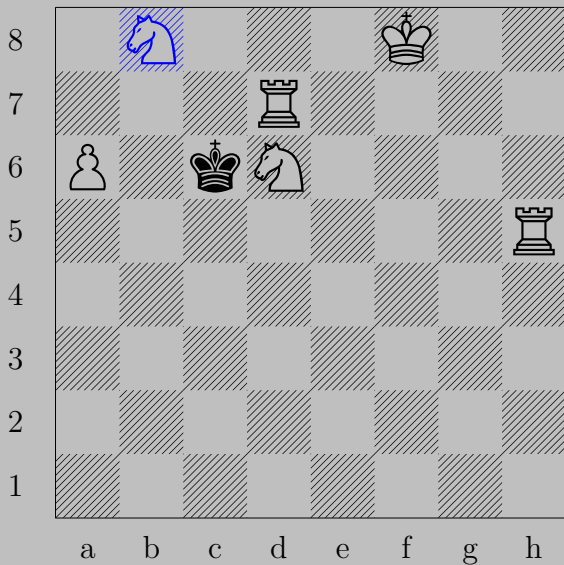
$\text{♖b8}(\text{♖}), \text{♔c7}$
 ♖c5

1560

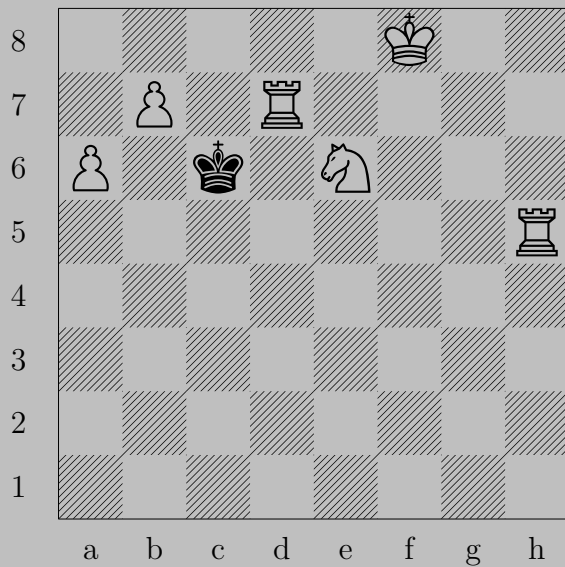


N. A. Bakke, 1972

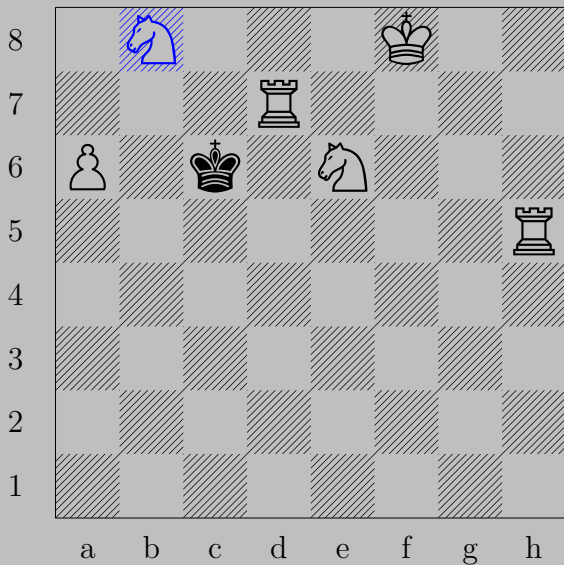
1560



$\text{♙b8}(\text{♘})!$, ♚b6
 ♘c8

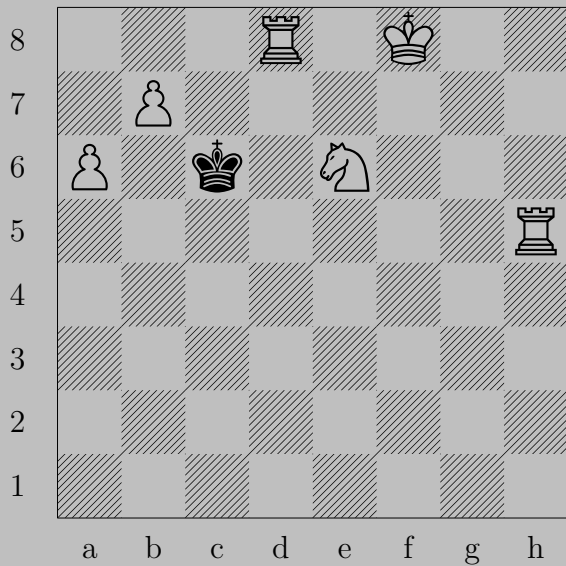


1561



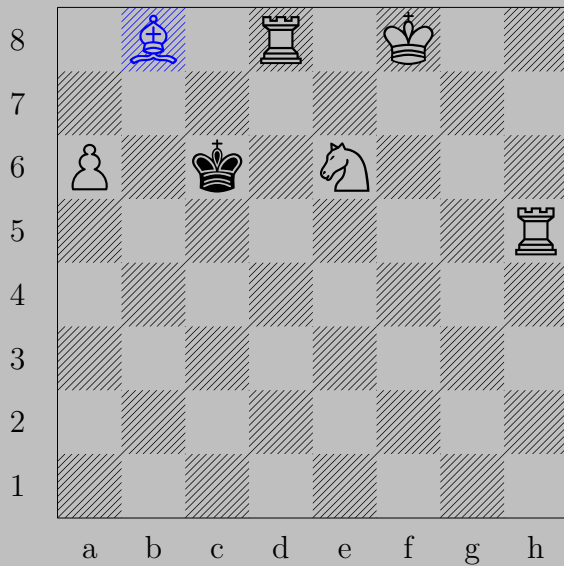
♖b8(♘)!, ♔b6
♖b7

1562



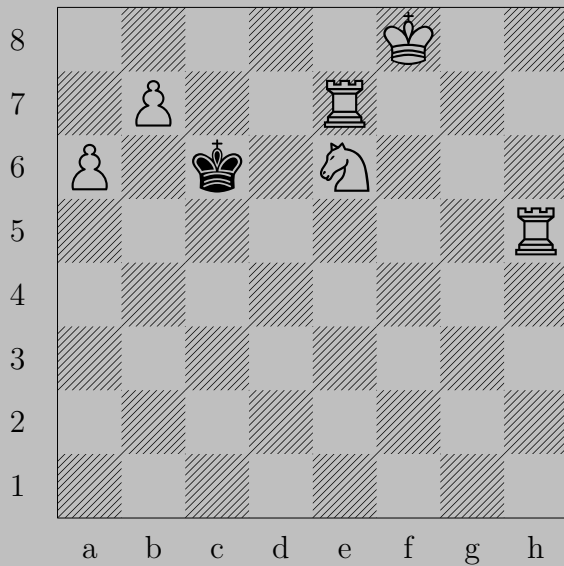
N. A. Bakke, 1972

1562



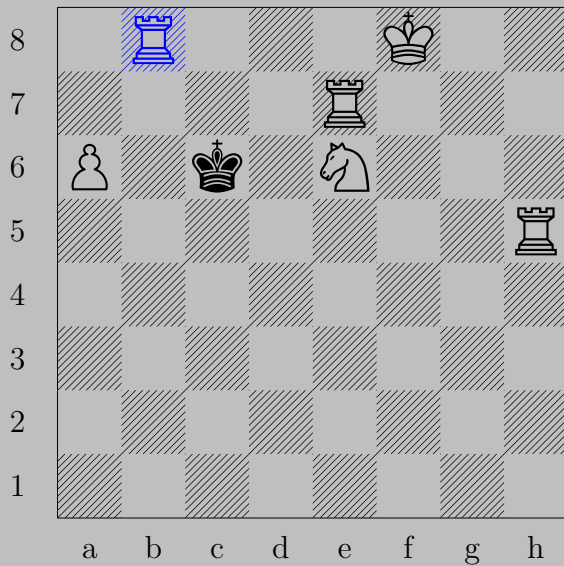
$\text{♗b8}(\text{♔}), \text{♔b6}$
 ♖d6

1563



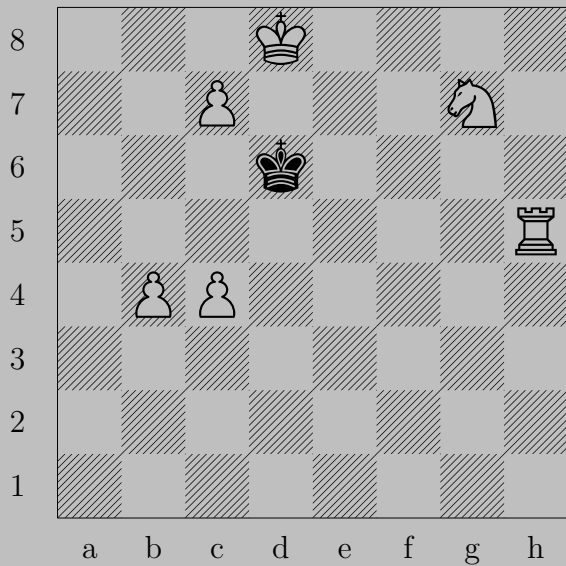
N. A. Bakke, 1972

1563



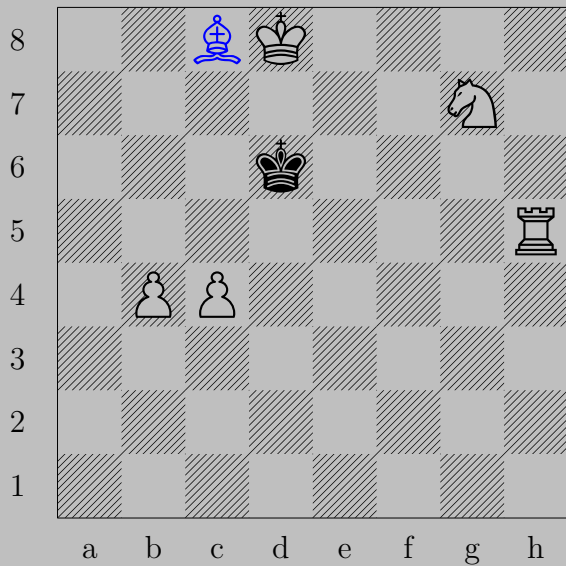
♖b8(♖), ♔d6
♖b6

1564



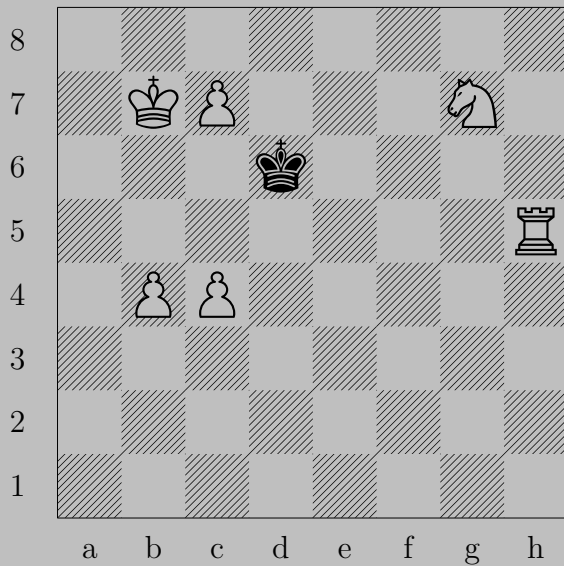
N. A. Bakke, 1972

1564



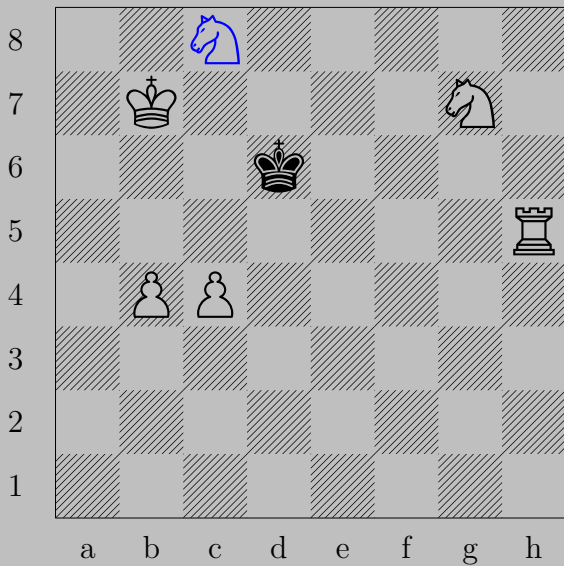
♗c8 (♗), ♔c6
 ♖h6

1565



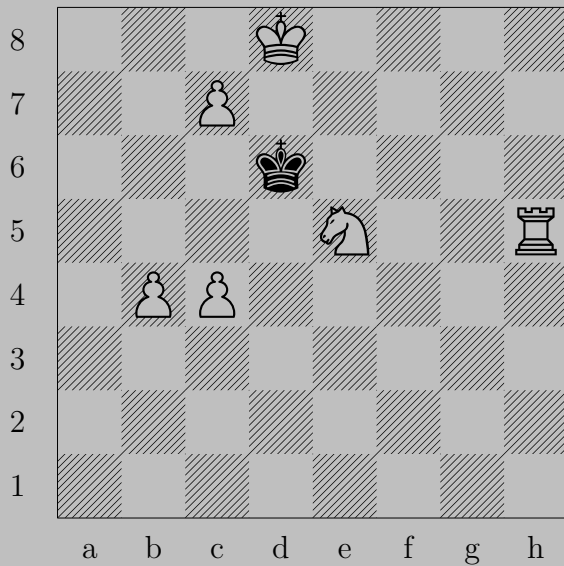
N. A. Bakke, 1972

1565



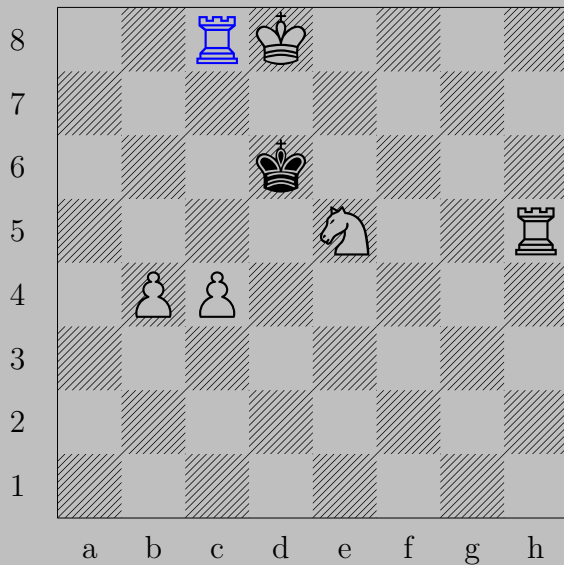
♞c8 (♞), ♚d7
 ♖d5

1566



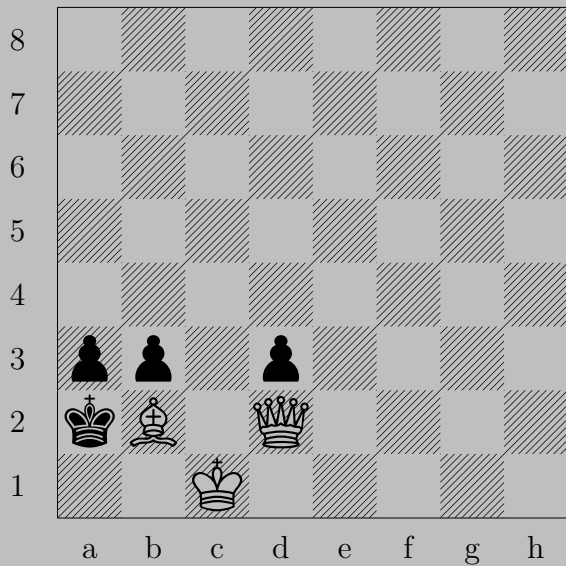
N. A. Bakke, 1972

1566



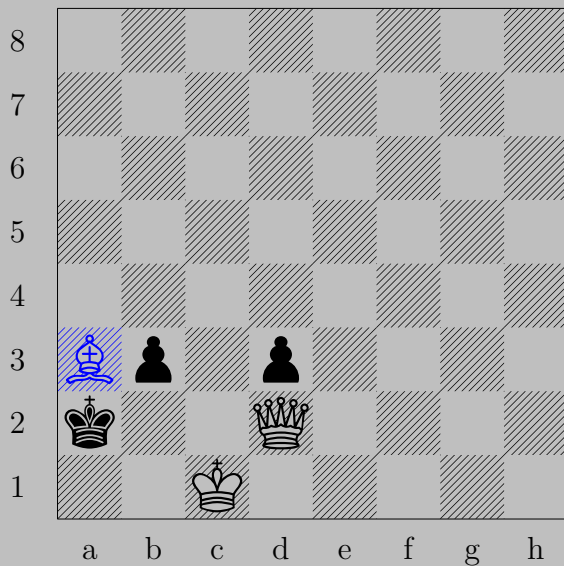
$\text{♔c8}(\text{♖}), \text{♕e6}$
 ♖c6

1567



Gy. Balló, 1927

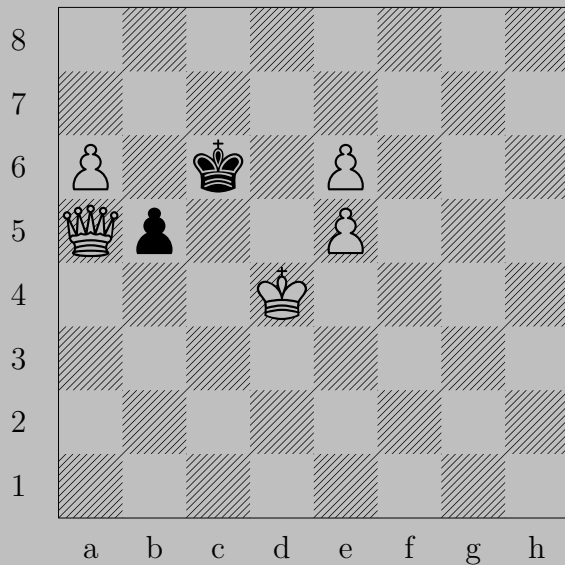
1567



$\text{♗} \times a3!$

If $\text{♕} \times a3$, $\text{♙} a5$. If $\text{♕} a1$, $\text{♙} b2$. If $\text{♗} b2$, $\text{♙} \times b2$.

1568



Gy. Balló, 1927

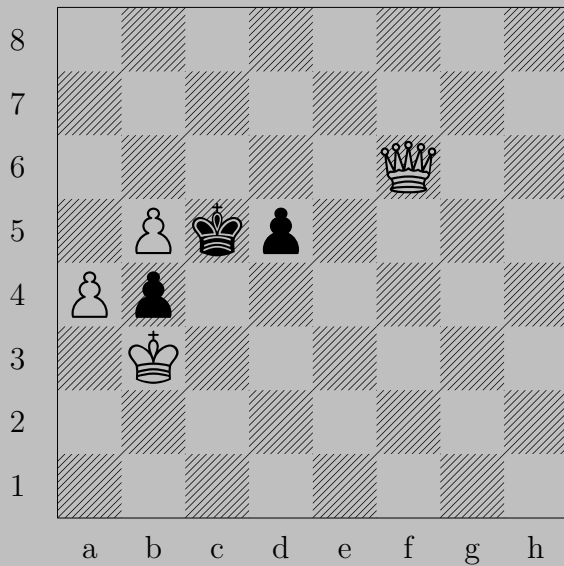
1568



♠a7, ♔b7 or ♠b4

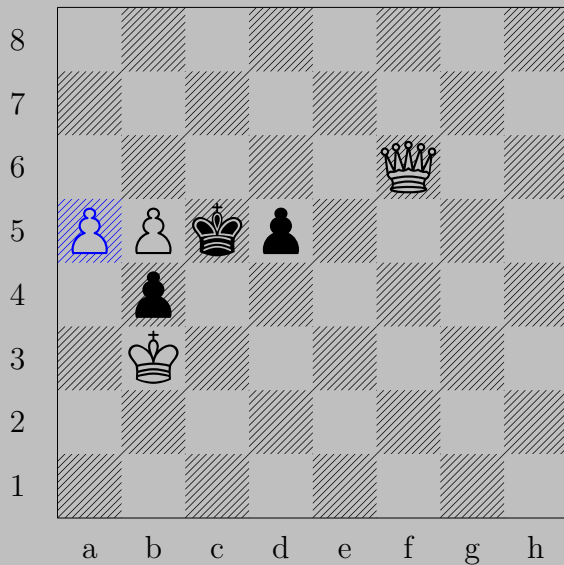
♠a8(♔)

1569



Gy. Balló, 1926

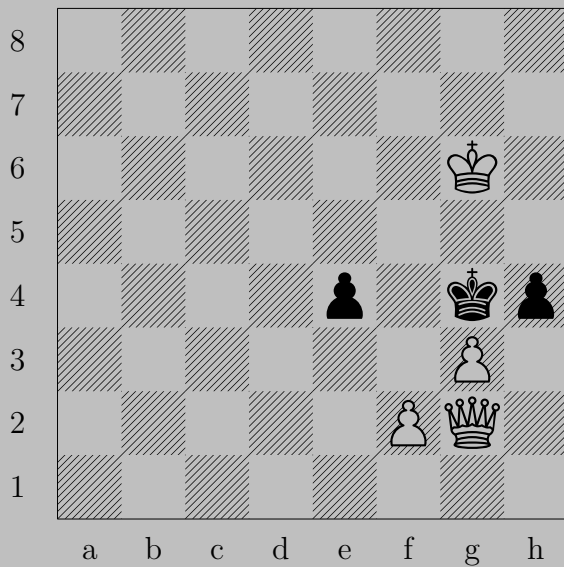
1569



$\triangleleft a5$

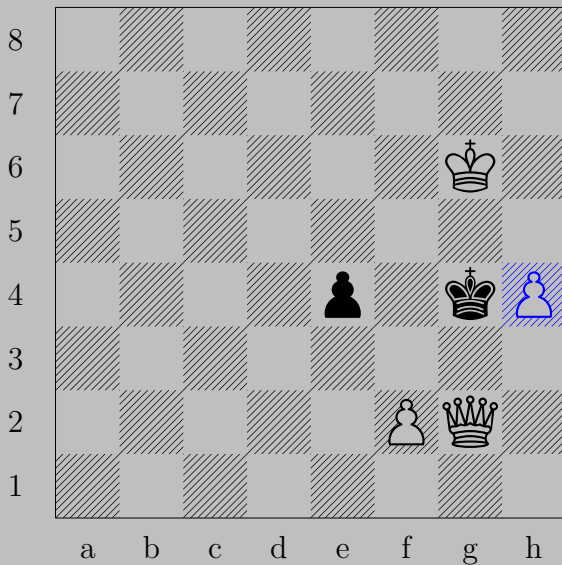
If $\text{♙} \times b5$, $\text{♚} b6$. If $\triangleleft d4$, $\text{♚} c6$.

1570



Gy. Balló, 1926

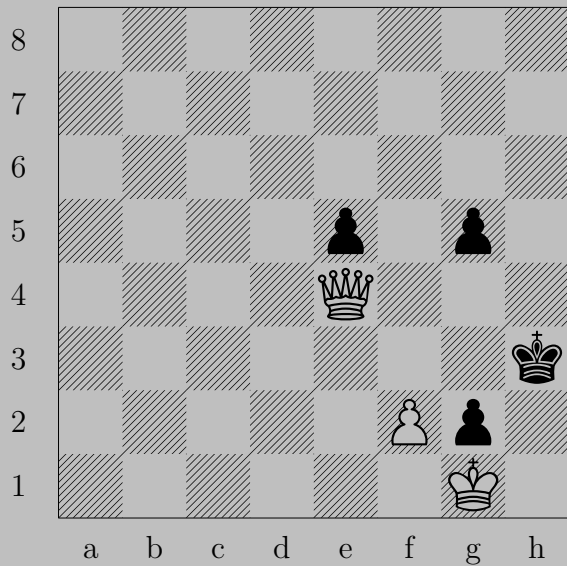
1570



♞×h4!, ♔×h4 or ♔e4

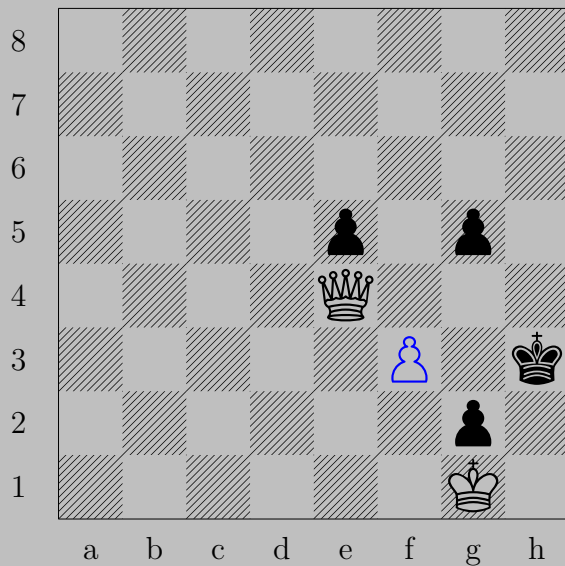
♚g3

1571



Gy. Balló, 1926

1571



$\triangleleft f3$

if $\triangleleft g3$, $\triangleleft g4$. If $\triangleleft g4$, $\triangleleft \times g4$.

1572



Gy. Balló, 1926

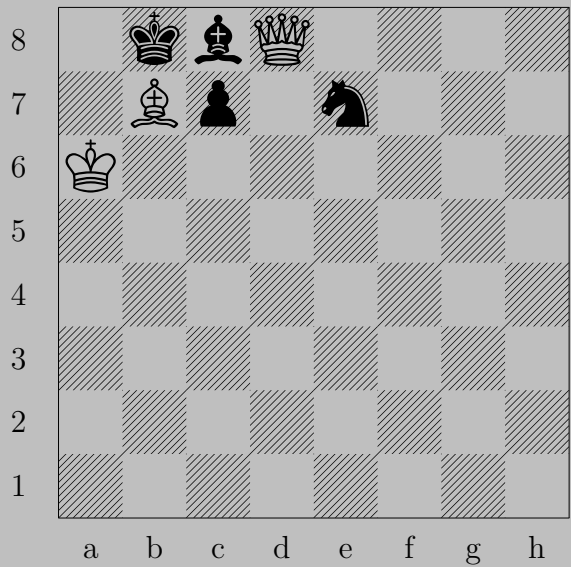
1572



♖d3, ♖xe4

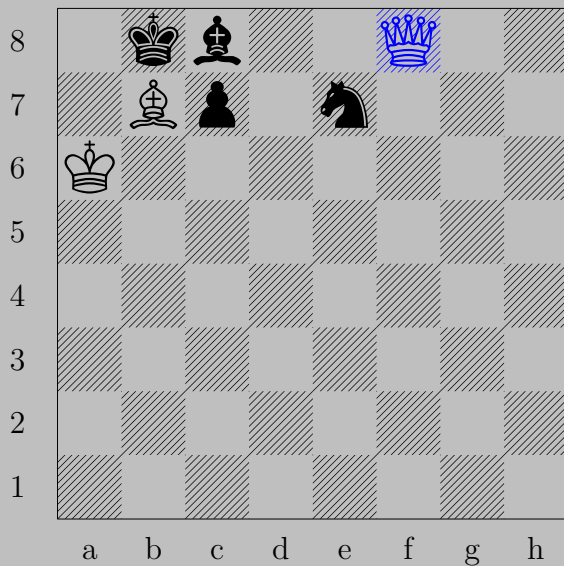
♔xe4

1573



Gy. Balló, 1928

1573



♙f8

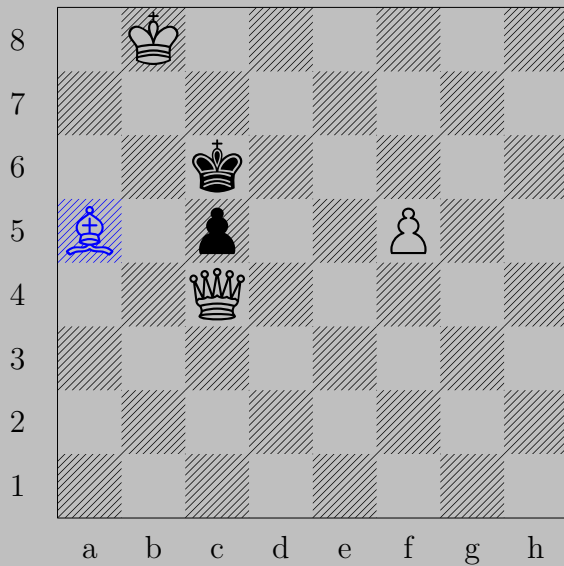
If ♘c6 or ♘c5, ♙f4. If ♘ anywhere, ♙×c8.

1574



Gy. Balló, 1928

1574



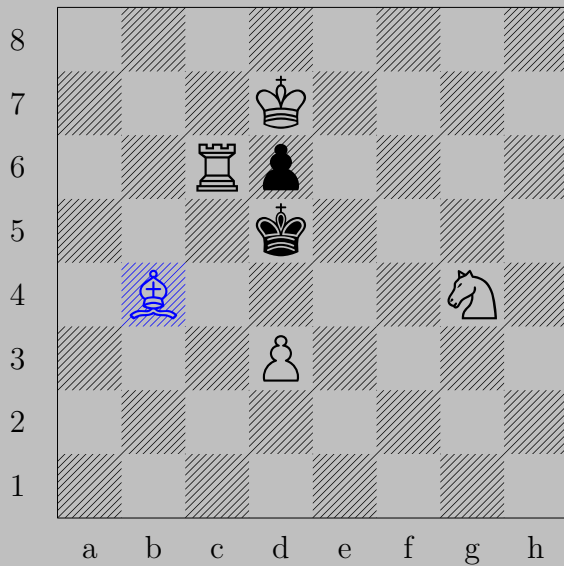
♖a5. ♔d6 or ♔d7
♔e6

1575



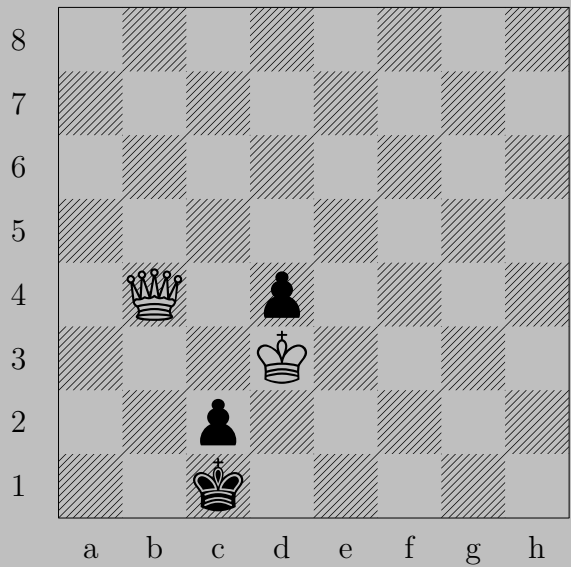
Gy. Balló, 1928

1575



♗b4. ♔d4
♖x d6

1576



Gy. Balló, 1925

1576



♔b7, ♔d1

♔h1

1577



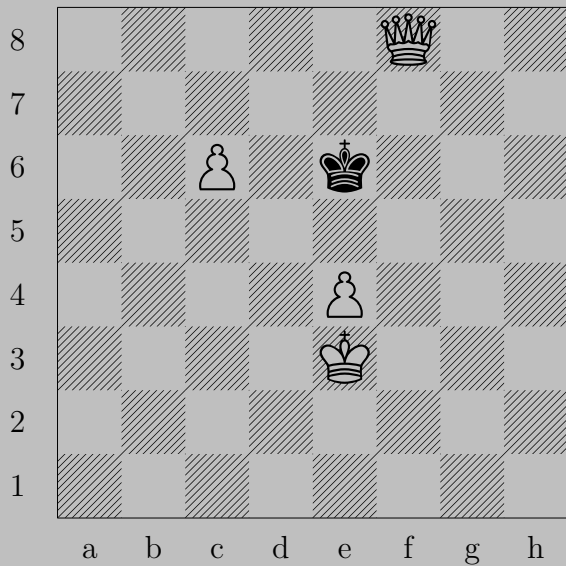
Gy. Balló, 1926

1577



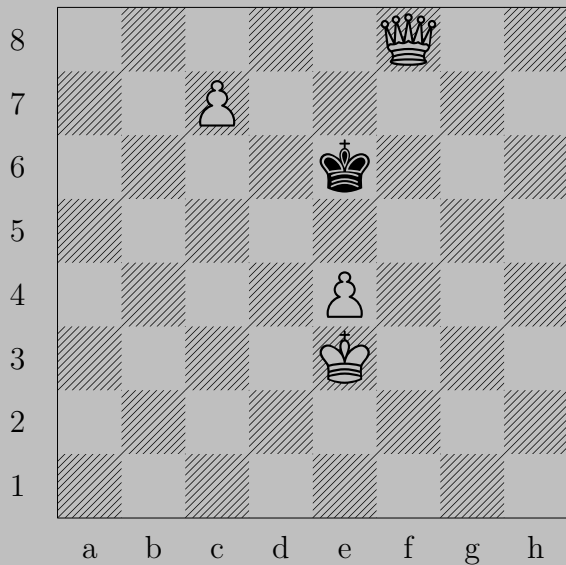
♔g6!, ♔c1
♕e1

1578



Gy. Balló, 1926

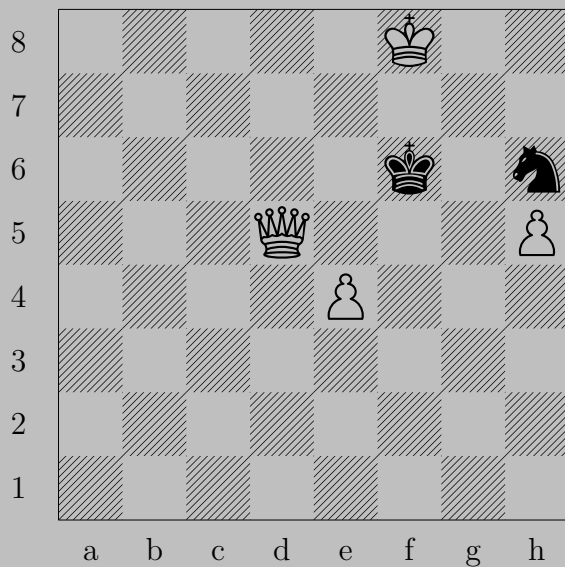
1578



$\triangleleft c7$

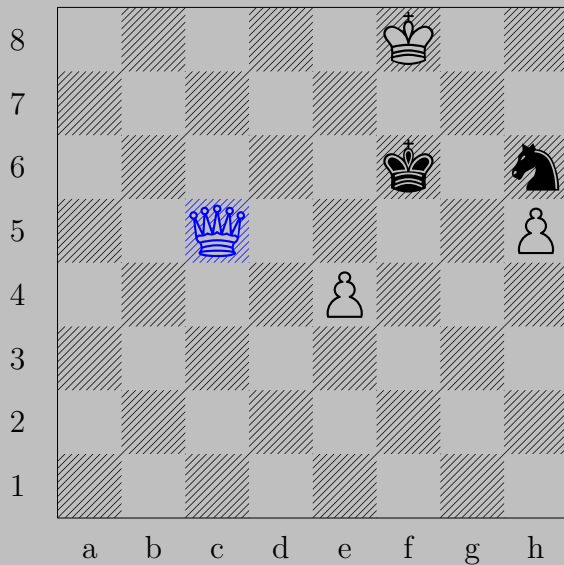
If $\triangleleft e5$, $\triangleleft e7$. If $\triangleleft d7$, $\triangleleft c8(\triangleleft)$.

1579



Gy. Balló, 1926

1579

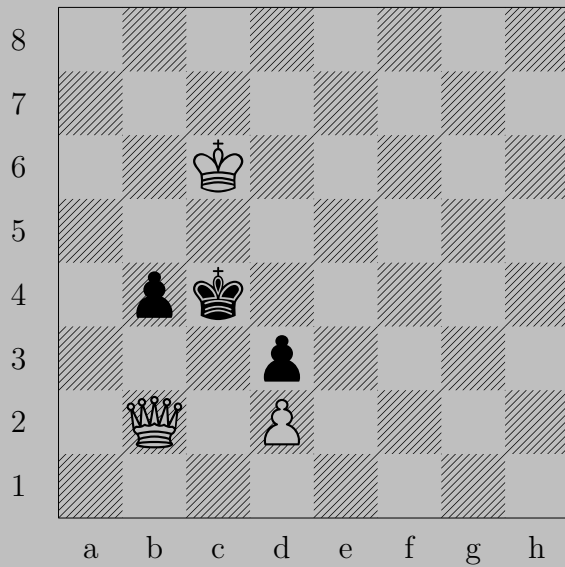


♚c5

If ♔e6, ♚e7. If ♞f5, ♚xf5.

Otherwise, ♚f5.

1580



Gy. Balló, 1926

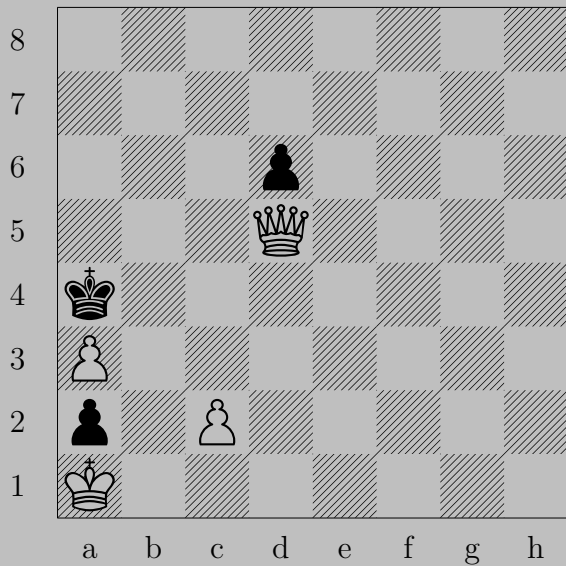
1580



♙a2!

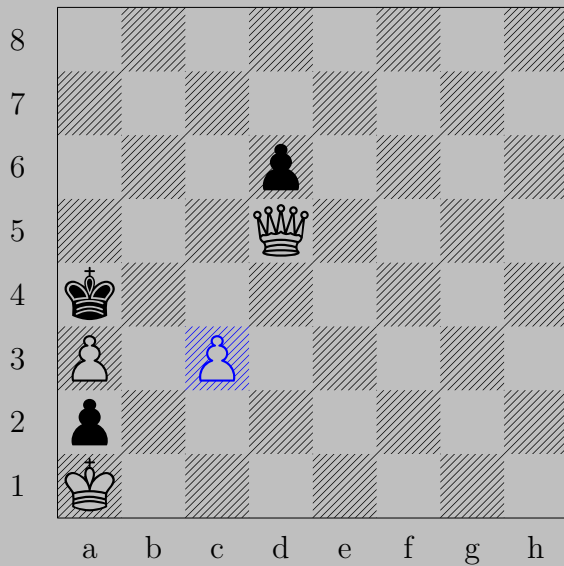
If ♖b3, ♙a4. If ♔d4, ♙d5.

1581



Gy. Balló, 1926

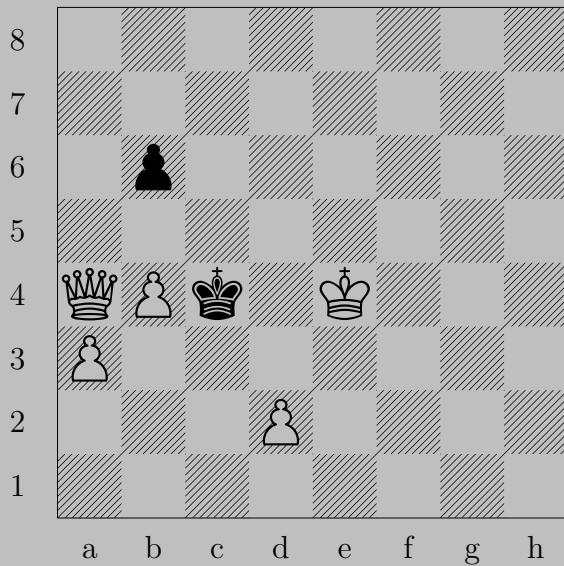
1581



♖c3, ♔×a3

♔×a2

1582



Gy. Balló, 1926

1582



♙b5!, ♚c5
♙b4

1583



Gy. Balló, 1926

1583



♔a3, ♖b1 or ♖c1 or ♘d3

♕d1

1584



Gy. Balló, 1926

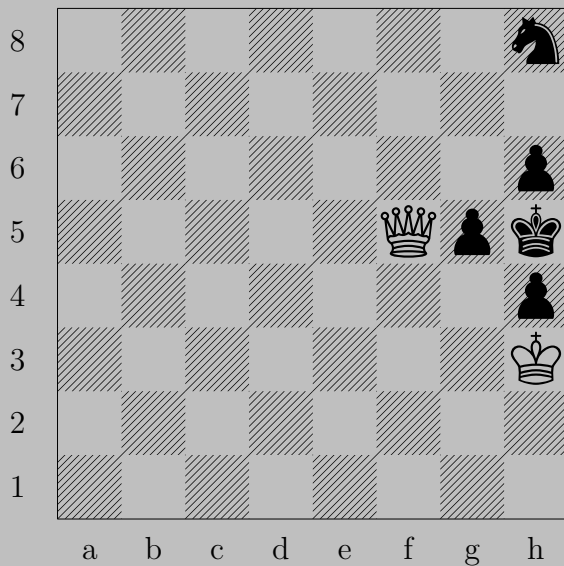
1584



♖a3, ♖b5

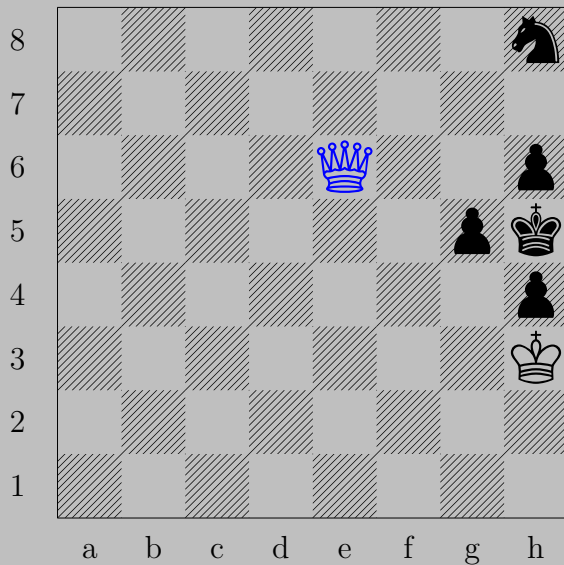
♙c2

1585



Gy. Balló - R. Pikler, 1926

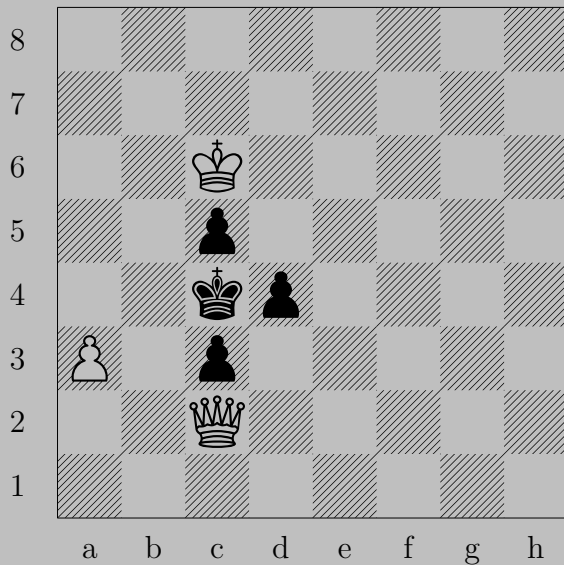
1585



♙e6

If ♘g6, ♙g4. If ♘f7, ♙xf7. If ♖g4!, ♙xg4.

1586



Gy. Balló - L. Lindner - E. Szynigörgyi, 1936

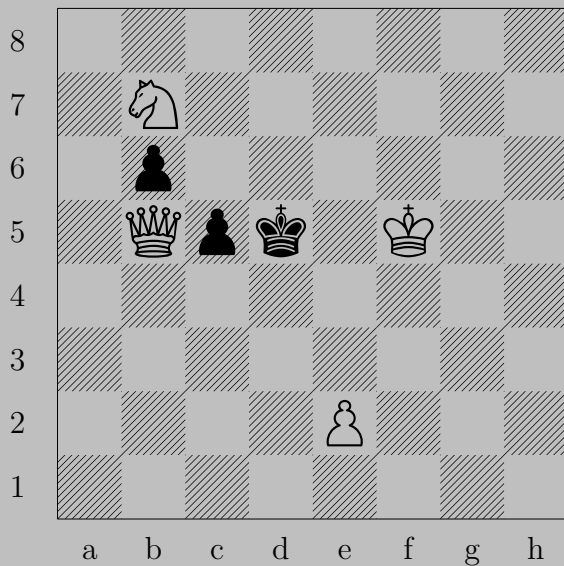
1586



♙d1

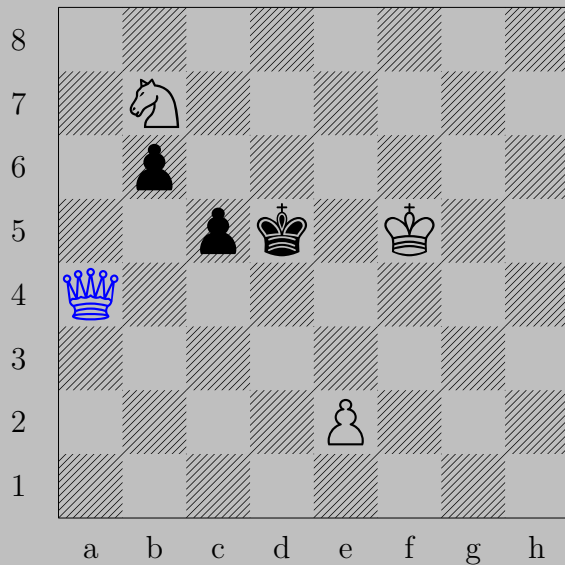
If ♖d3, ♙a4. If ♖c2, ♙xc2.

1587



Gy. Balló - E. Szynigörgyi, 1935

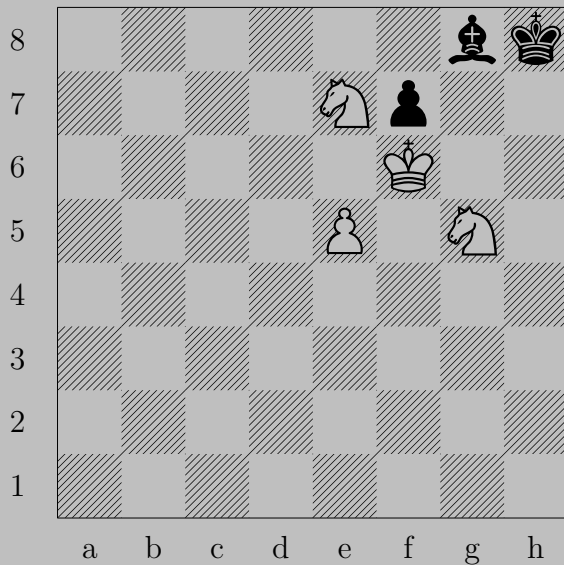
1587



♙a4

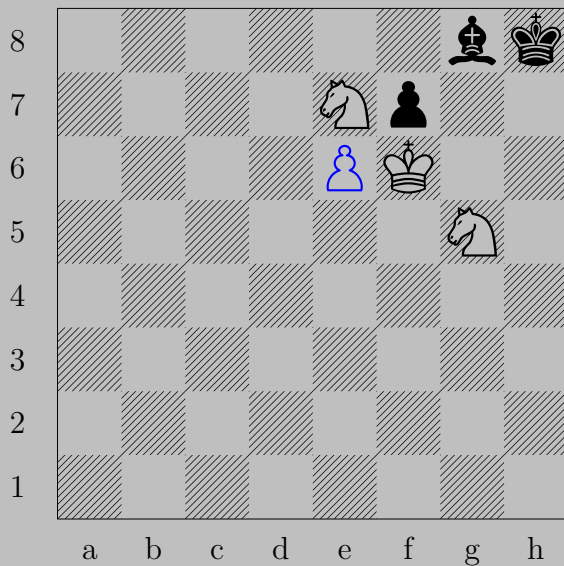
If ♟c4, ♙d7. If ♟b5, ♙e4.

1588



Gy. Balló - E. Szynigörgyi, 1927

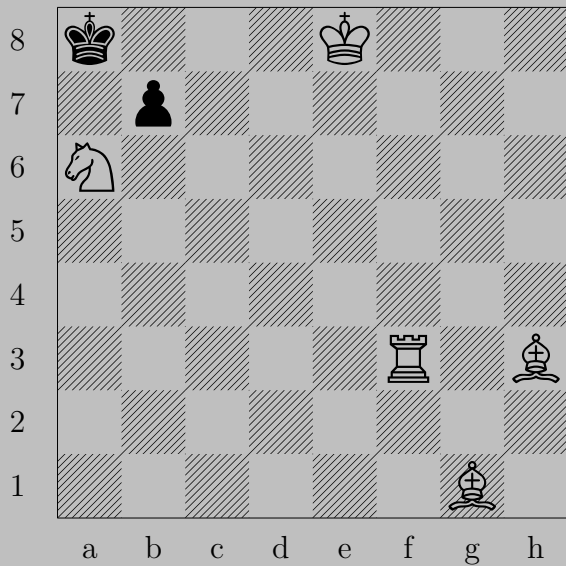
1588



♖e6

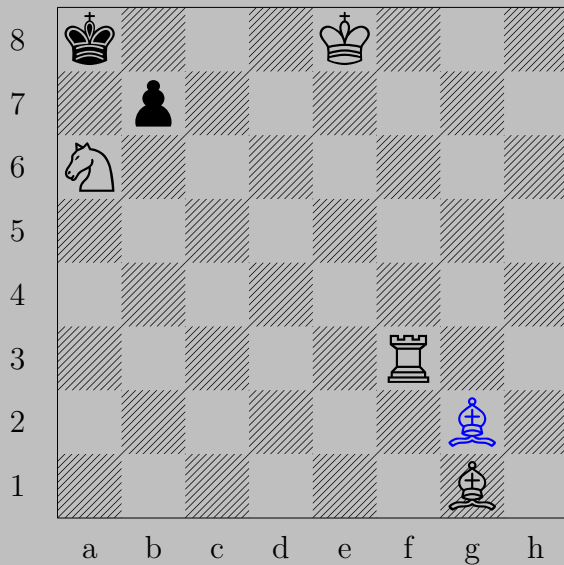
If ♗xe6, ♘g6. If ♙h7, ♘xf7.

1589



D. Banny, 1969

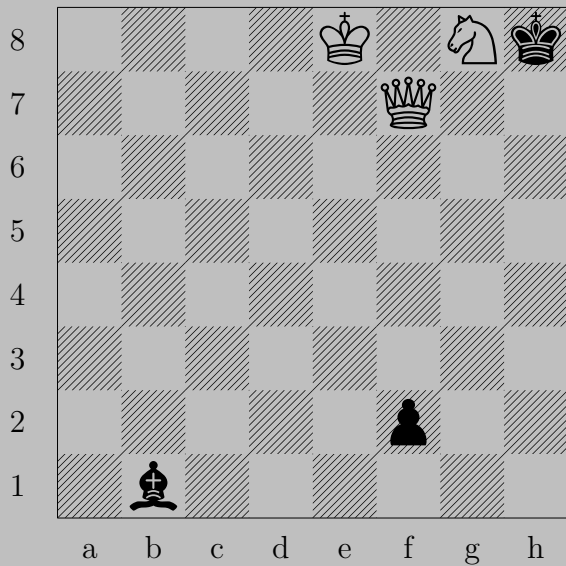
1589



♔g2

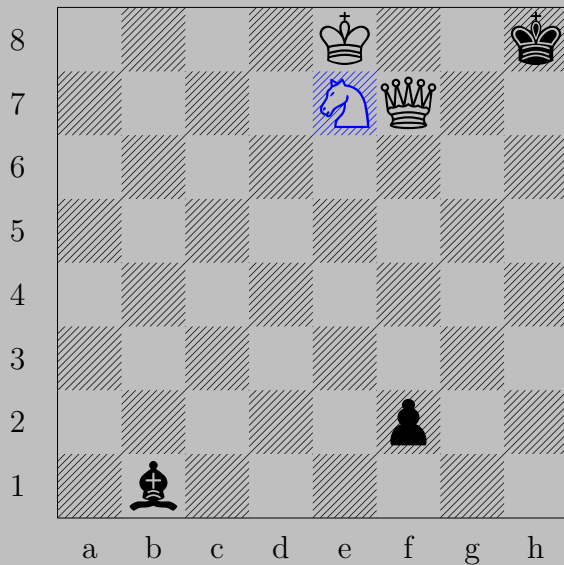
If ♖xa6, ♖b3. If ♖b6 or ♖b5, ♖f7.

1590



O. Barda, 1961

1590



♞e7

If ♞g6 , ♞xg6 . If ♞a2 , ♞g6 . If ♞h7 , ♞f6 .

Otherwise, ♞g8 .

1591



Y. Basrsky, 1936

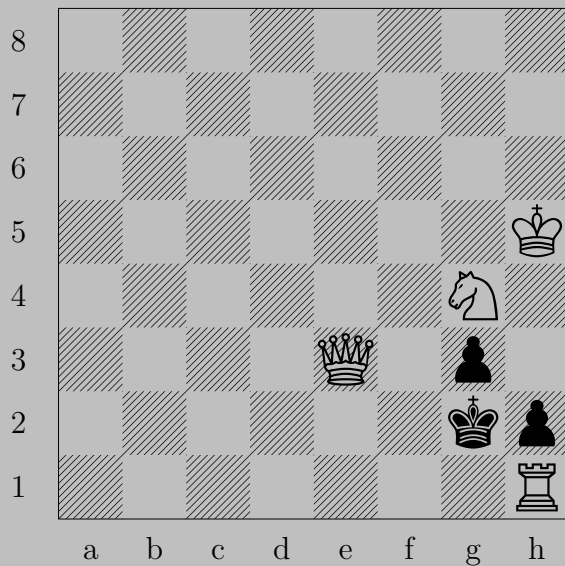


♗a7

If ♗d6 , ♕d4 . If ♖d6 , ♗c4 . If ♖d5 , ♗b6 .

Otherwise, $\text{♕} \times \text{d7}$.

1592



E. Barthélemy, 1935

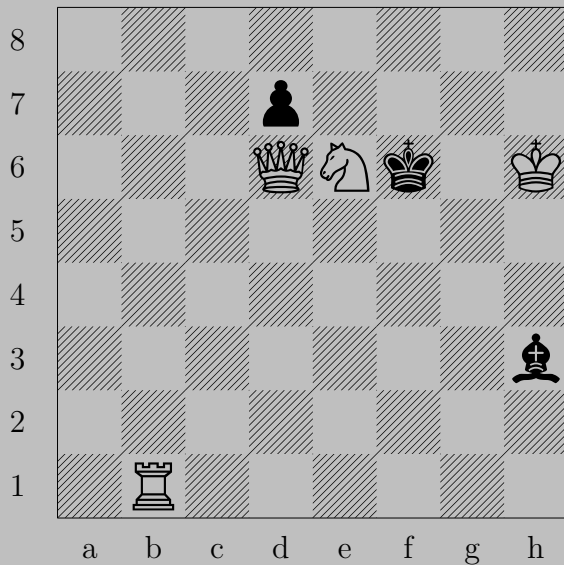
1592



♙d3

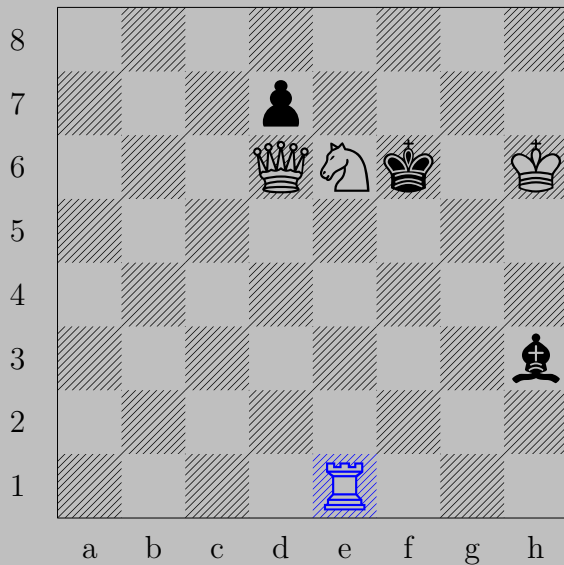
If ♔×h1, ♙f1. If ♔h3, ♖×h2.

1593



E. Barthélemy, 1935

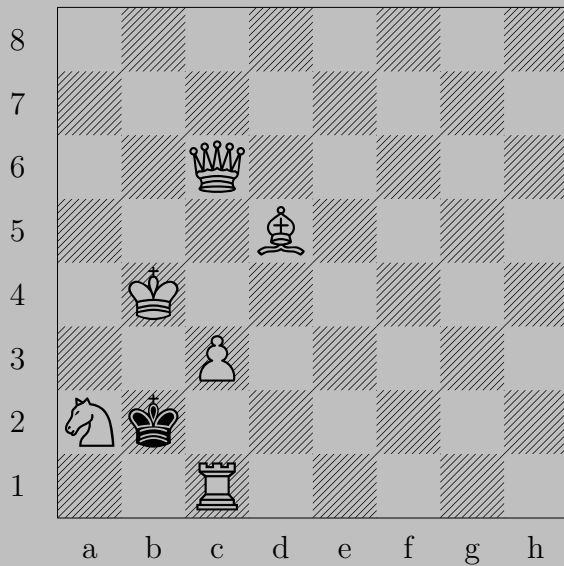
1593



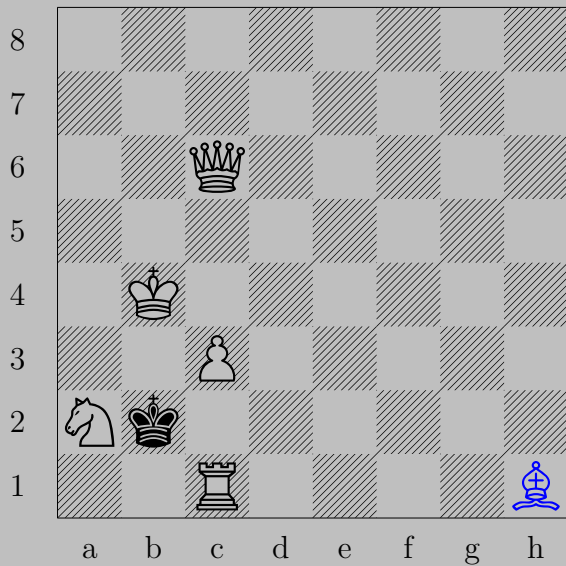
♖e1

If ♔×e6, ♖f1.

Otherwise, ♕f8.



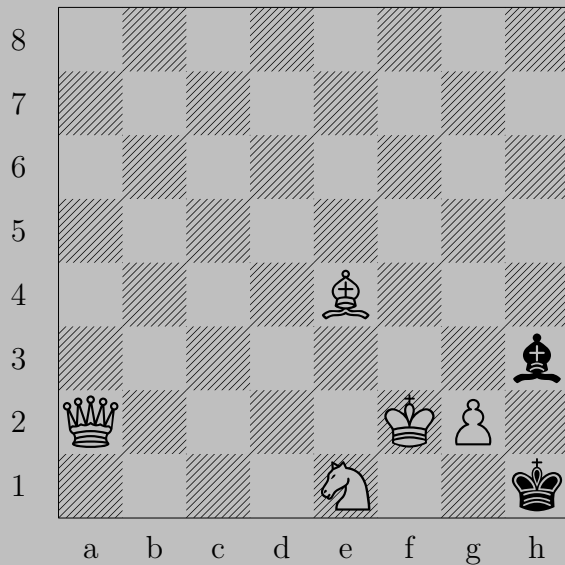
1594



♔h1, ♔xa2

♚g2

1595



E. Barthélemy, 1935

1595

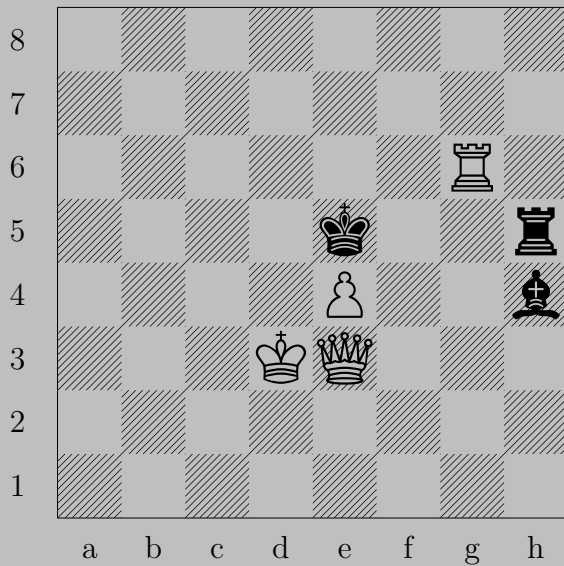


♔a1

If ♖×g2, ♔h8.

Otherwise, ♞f3.

1596



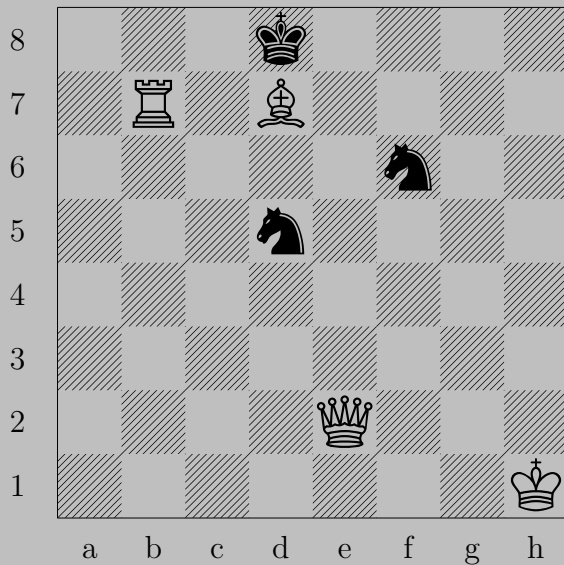
H. Bartolovich, 1993



♔f3.

If ♘e7-d8, ♕g3. If ♘e1-g3 or ♖g5, ♕f6. If ♘f6, ♕×f6. If ♖f5, ♕×f5.
Otherwise, ♕f5.

1597



H. Bartolovich, 1993

1597



♙e6

If ♘e7, ♚b6. If ♘xd7, ♚xd7. If ♘g8-h7-h5-g4-e4, ♚e8. If ♘d8, ♚xe8.
Otherwise, ♚e7.

1598



I. Bata, 1942

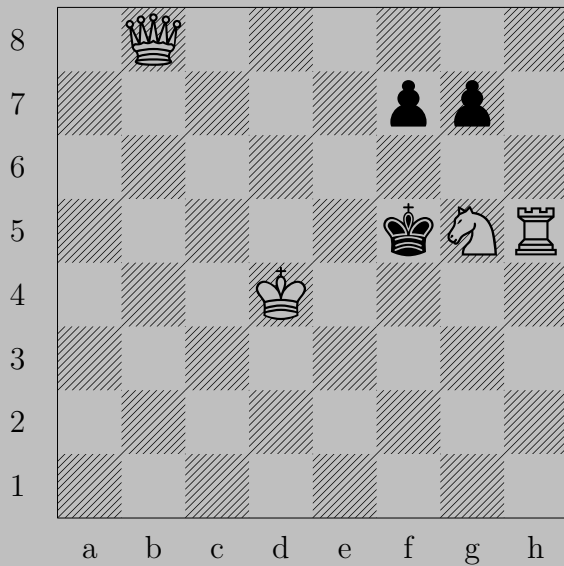
1598



♙g5

If ♔c6, ♚b5. If ♔c8, ♘g4. If ♔e8, ♚e7. If ♔e6, ♞f8.

1599



E. Battaglia, 1992

1599

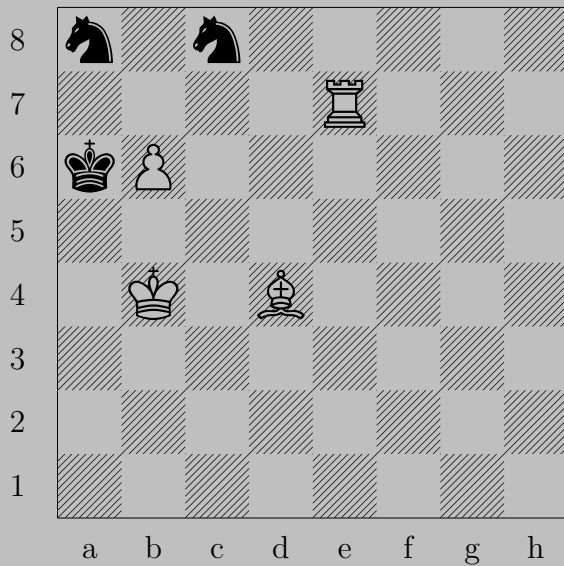


♔b7

If ♘f6, ♙e4. If ♚f6 or ♚g6, ♙×f7.

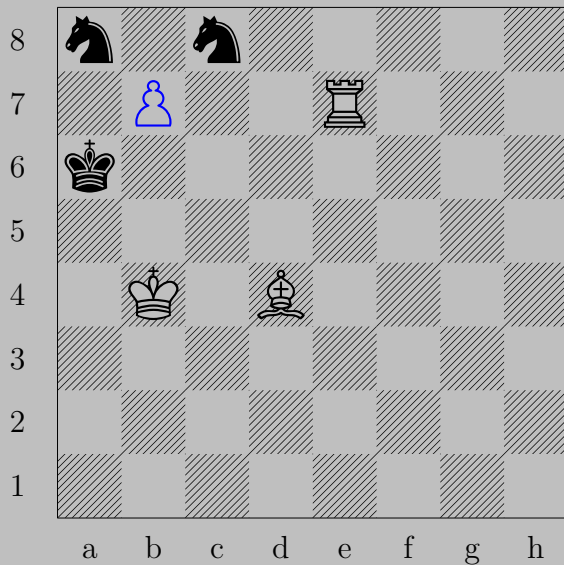
Otherwise, ♙f3.

1600



E. Battaglia, 1990

1600



♙b7

If ♞b6 or ♞c7, ♙xc8(♔).

otherwise, ♙xa8(♔).