

# Chess Puzzles

1801-1900

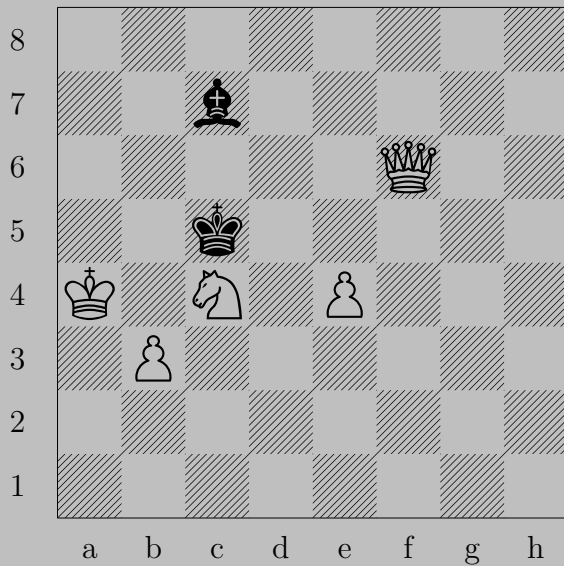
Mate in Two  
White to Move

László Polgár

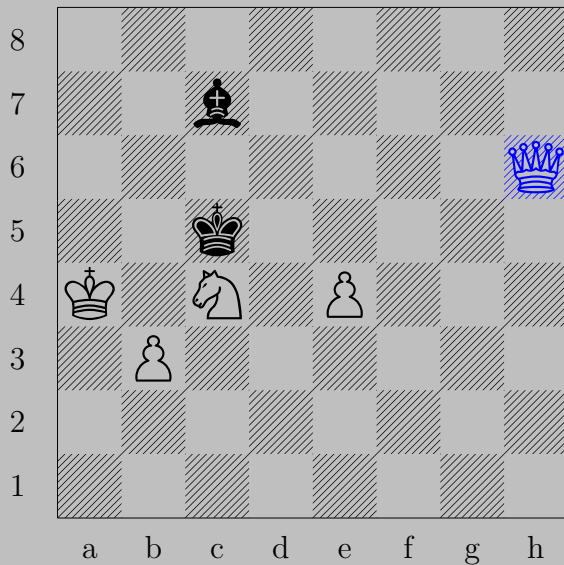
## Links

<a href="#">1801</a>	<a href="#">1802</a>	<a href="#">1803</a>	<a href="#">1804</a>	<a href="#">1805</a>	<a href="#">1806</a>	<a href="#">1807</a>	<a href="#">1808</a>	<a href="#">1809</a>	<a href="#">1810</a>
<a href="#">1811</a>	<a href="#">1812</a>	<a href="#">1813</a>	<a href="#">1814</a>	<a href="#">1815</a>	<a href="#">1816</a>	<a href="#">1817</a>	<a href="#">1818</a>	<a href="#">1819</a>	<a href="#">1820</a>
<a href="#">1821</a>	<a href="#">1822</a>	<a href="#">1823</a>	<a href="#">1824</a>	<a href="#">1825</a>	<a href="#">1826</a>	<a href="#">1827</a>	<a href="#">1828</a>	<a href="#">1829</a>	<a href="#">1830</a>
<a href="#">1831</a>	<a href="#">1832</a>	<a href="#">1833</a>	<a href="#">1834</a>	<a href="#">1835</a>	<a href="#">1836</a>	<a href="#">1837</a>	<a href="#">1838</a>	<a href="#">1839</a>	<a href="#">1840</a>
<a href="#">1841</a>	<a href="#">1842</a>	<a href="#">1843</a>	<a href="#">1844</a>	<a href="#">1845</a>	<a href="#">1846</a>	<a href="#">1847</a>	<a href="#">1848</a>	<a href="#">1849</a>	<a href="#">1850</a>
<a href="#">1851</a>	<a href="#">1852</a>	<a href="#">1853</a>	<a href="#">1854</a>	<a href="#">1855</a>	<a href="#">1856</a>	<a href="#">1857</a>	<a href="#">1858</a>	<a href="#">1859</a>	<a href="#">1860</a>
<a href="#">1861</a>	<a href="#">1862</a>	<a href="#">1863</a>	<a href="#">1864</a>	<a href="#">1865</a>	<a href="#">1866</a>	<a href="#">1867</a>	<a href="#">1868</a>	<a href="#">1869</a>	<a href="#">1870</a>
<a href="#">1871</a>	<a href="#">1872</a>	<a href="#">1873</a>	<a href="#">1874</a>	<a href="#">1875</a>	<a href="#">1876</a>	<a href="#">1877</a>	<a href="#">1878</a>	<a href="#">1879</a>	<a href="#">1880</a>
<a href="#">1881</a>	<a href="#">1882</a>	<a href="#">1883</a>	<a href="#">1884</a>	<a href="#">1885</a>	<a href="#">1886</a>	<a href="#">1887</a>	<a href="#">1888</a>	<a href="#">1889</a>	<a href="#">1890</a>
<a href="#">1891</a>	<a href="#">1892</a>	<a href="#">1893</a>	<a href="#">1894</a>	<a href="#">1895</a>	<a href="#">1896</a>	<a href="#">1897</a>	<a href="#">1898</a>	<a href="#">1899</a>	<a href="#">1900</a>

1801



N. Furbás, 1979



♔h6

If ♔d4, ♕e3. If ♘d6, ♕×d6. If ♘a5-d8, ♕d6.

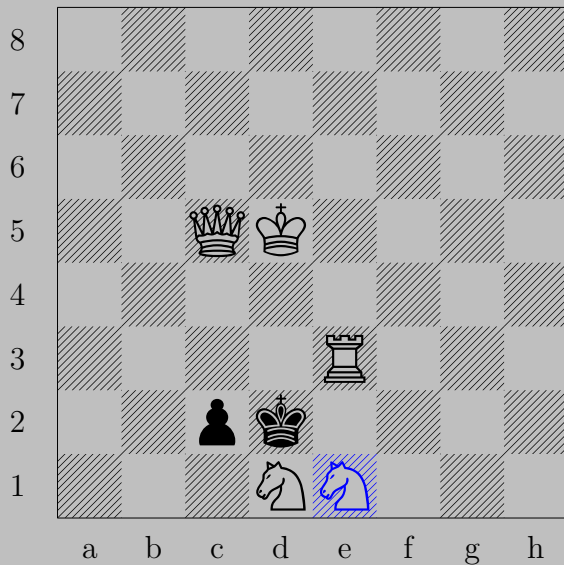
Otherwise, ♕b6.

1802



A. Fossum, 1951

1802



$\text{♞e1}$   
If  $\text{♞xd1}(\text{♞})$ ,  $\text{♞c3}$ . If  $\text{♞xd1}(\text{♞})$ ,  $\text{♞f2}$ . If  $\text{♞c1}(\text{♞})$ ,  $\text{♞d4}$ . If  $\text{♞c1}(\text{♞})$ ,  $\text{♞c2}$ .  
If  $\text{♞xd1}$  or  $\text{♞c1}$ ,  $\text{♞xc2}$ .

1803



W. F. von Holzhausen, 1902

1803



$\text{R}a8$

If  $\text{K}b6$  or  $\text{K}c6$ ,  $\text{Q}b5$ . If  $\text{K}xa8$  or  $\text{K}b6$ ,  $\text{Q}f3$ .

Otherwise,  $\text{Q}a6$ .

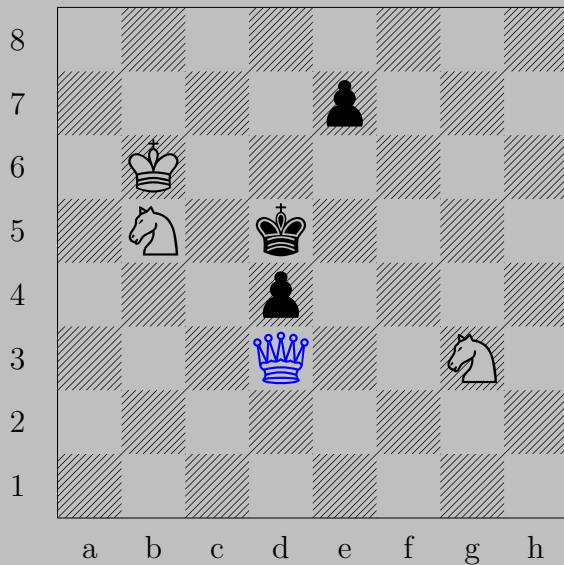


1804



V. Frigin, 1985/86

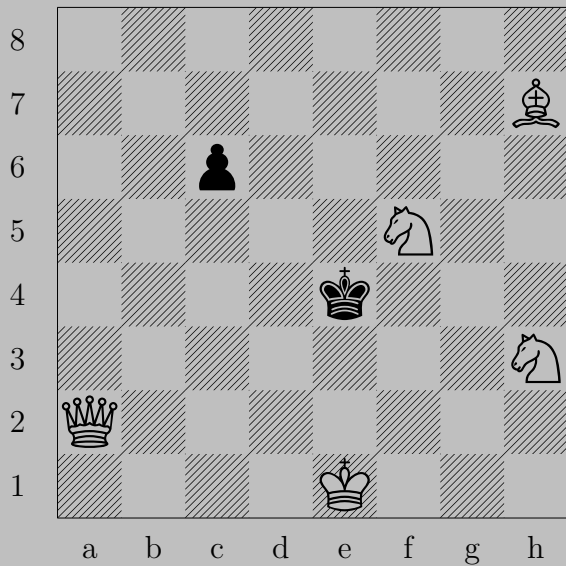
1804



♔d3

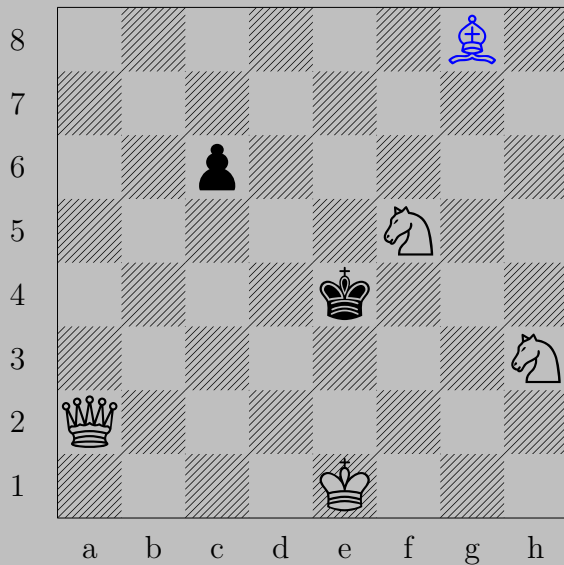
If ♔e6 or ♔e5, ♚f5. If ♖e6, ♚xd4. If ♖e5, ♚b3.

1805



G. Z., 1893

1805



♙g8

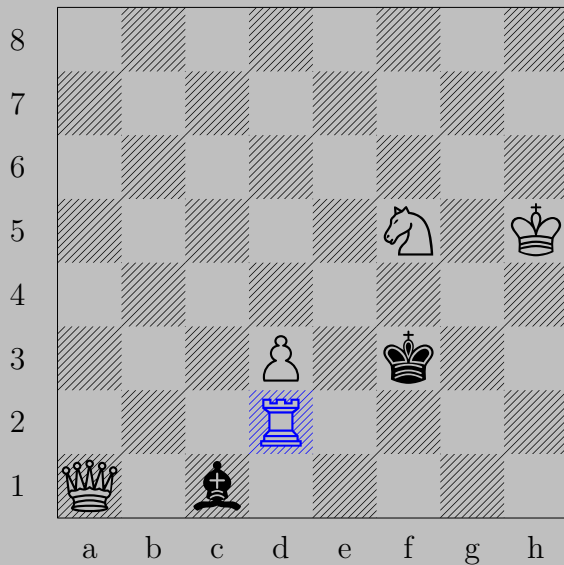
If ♙xf5 or ♙e5, ♚e6. If ♙d3, ♚c4. If ♙f3, ♚e2. If ♜c5, ♚d5.

1806



A. Galitzky, 1905

1806



$\text{Rd}2$

If  $\text{Kf}4$ ,  $\text{Rf}2$ .

Otherwise,  $\text{Qf}1$ .

1807



A. Galitzky, 1903

1807

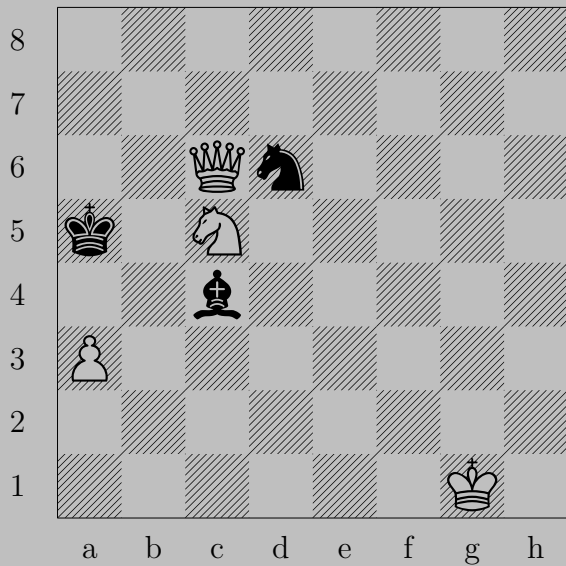


♔e5

if ♕e7 or ♖c6, ♜h7. If ♖c5, ♜b7.

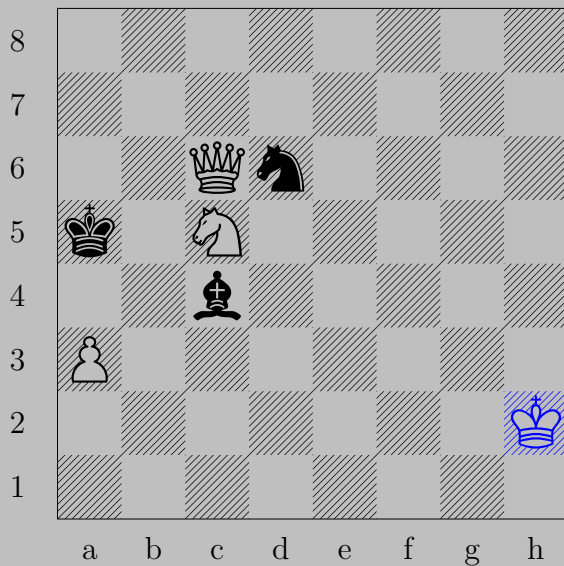


1808



A. Galitzky, 1890

1808

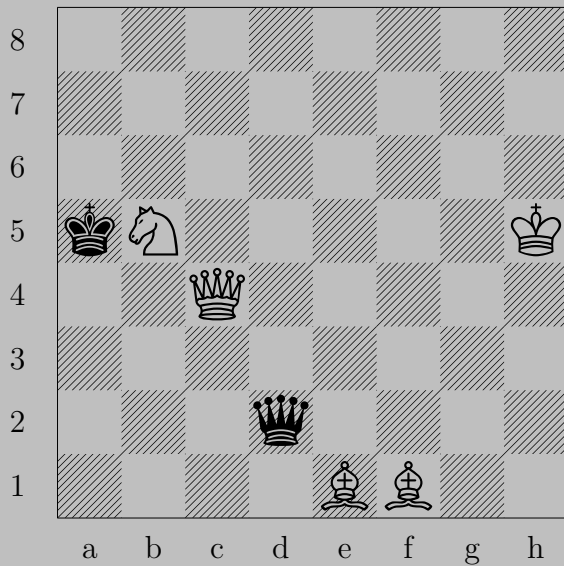


♔h2

If ♕a2-g8 or ♖b5, ♔a6. If ♕a6-f1, ♖b3. If ♖b7, ♖x b7.

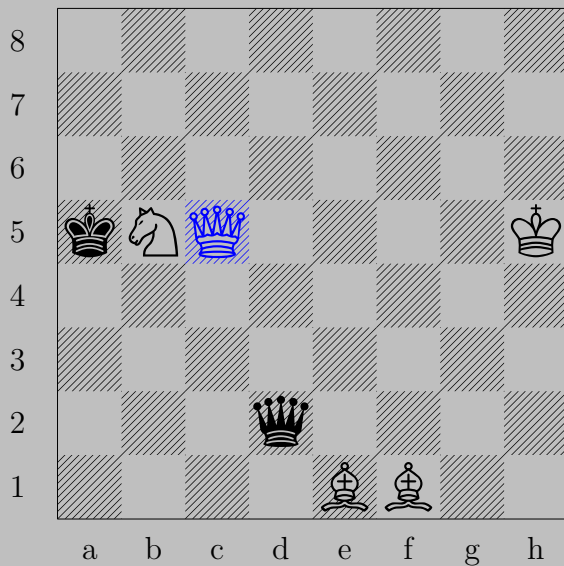
Otherwise, ♖b7.

1809



N. Galiletzky, 1967/68

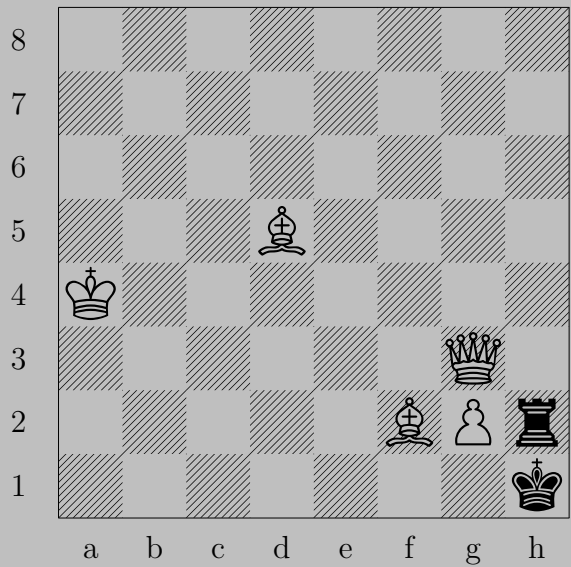
1809



♙c5

if ♔a6 or ♜b4, ♚a7. If ♔a4, ♚a3. If ♜c3, ♞xc3.

1810



K Gavrilov, 1926

1810

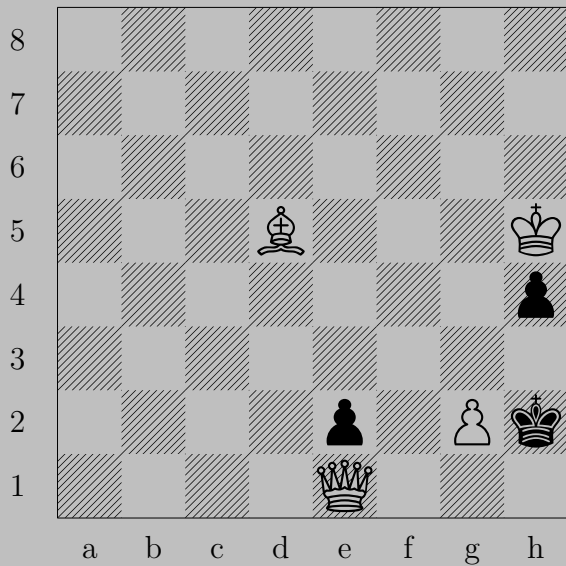


♚e5

If ♖h5, ♚xh5. If ♖xg2, ♚h5. If ♖h3, ♙xh3.

Otherwise, ♙g4.

1811



K Gavrilov, 1931

1811



♙g4

If ♙×g3 (en passant), ♚h1. If ♙h3, ♚f2. If ♙h3, ♙×h4.

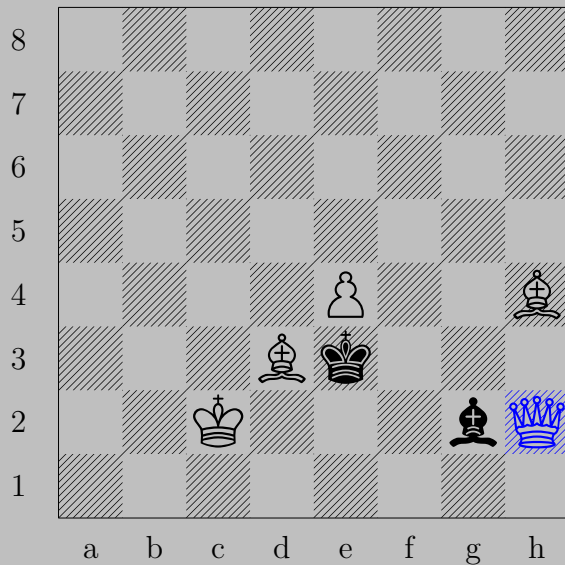


1812



K Gavrilov, 1905

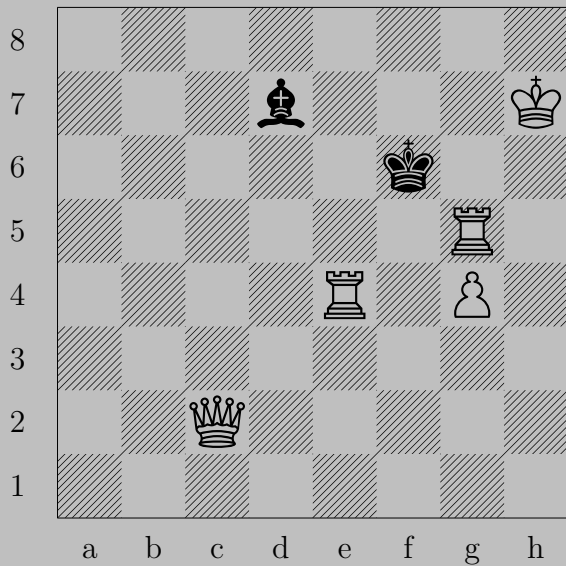
1812



♔h2

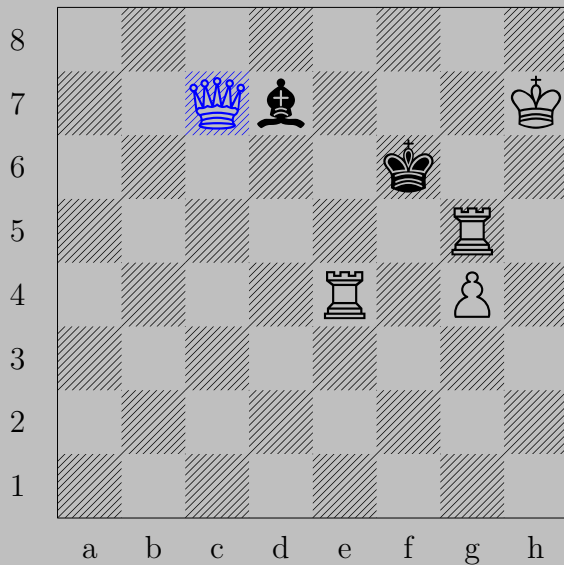
If ♖d4 or ♙f3, ♙f2. If ♖f3, ♔g3. If ♙xe4 or ♙h1, ♔f2.

1813



K Gavrilov, 1904

1813



♙c7

If ♔×g5, ♙d8. If ♔f7, ♖f5.

Otherwise, ♙g7.

1814



K Gavrilov, 1933

1814



♖d5

If ♖a7, ♖c7. If ♖b8, ♖b6.

If ♖d8 or ♖e7 or ♖e5, ♔a4. If ♖a5 or ♖b4 or ♖d4, ♔d8.

1815



K Gavrilov, 1902

1815

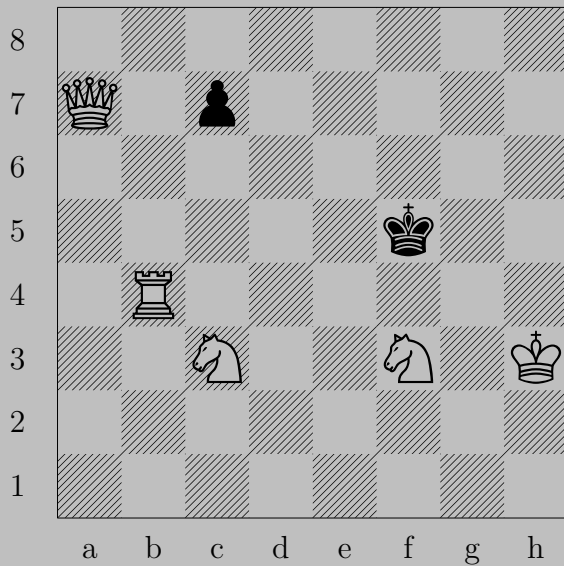


♔c7

If ♖xd6 or ♖e6 or ♖e5, ♔h7. If ♚h4, ♖h6.

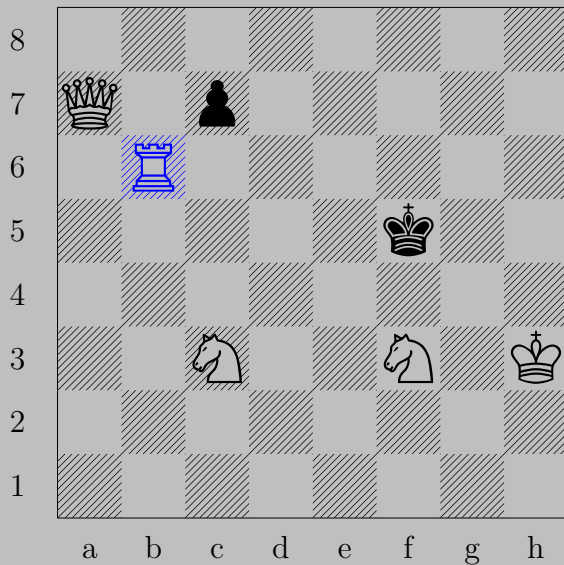


1816



K Gavrilov, 1904

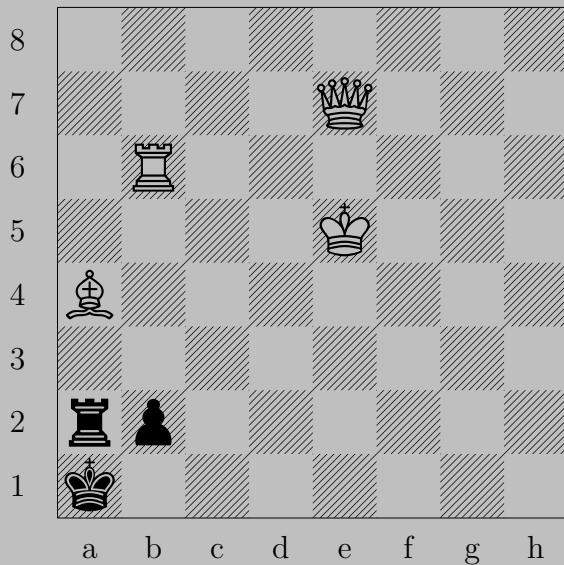
1816



♖b6

If ♗xb6 or ♗c6 or ♗c5, ♚f7. If ♚f4, ♖f6.

1817



Z. Gavrilovski, 1989

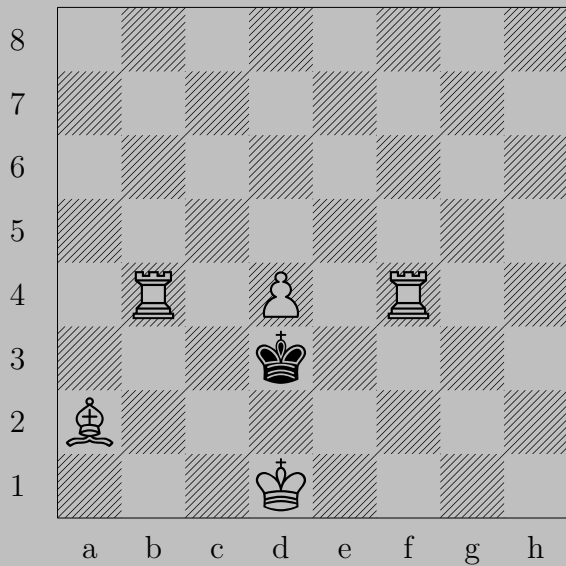
1817



♙b4

If ♘b1, ♙xb1. If ♚b1, ♙e1. If ♖a3 or ♖xa4, ♙xb2.

1818



I. Gazimon, 1969

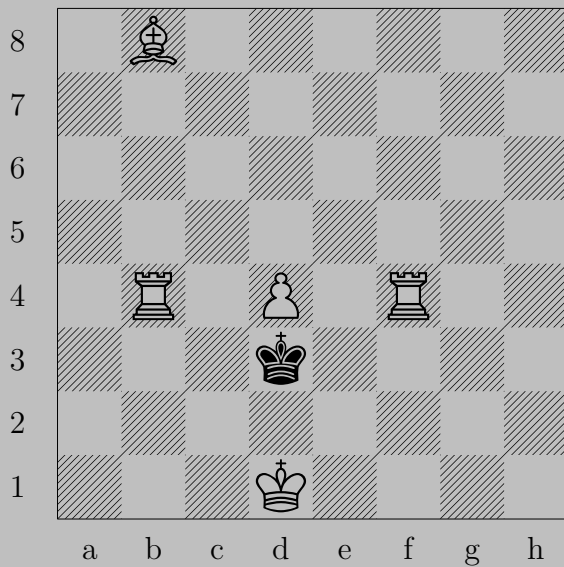
1818



♗d5

If ♔c3, ♖b3. If ♔e3, ♖f3.

1819



I. Gazimon, 1969

1819

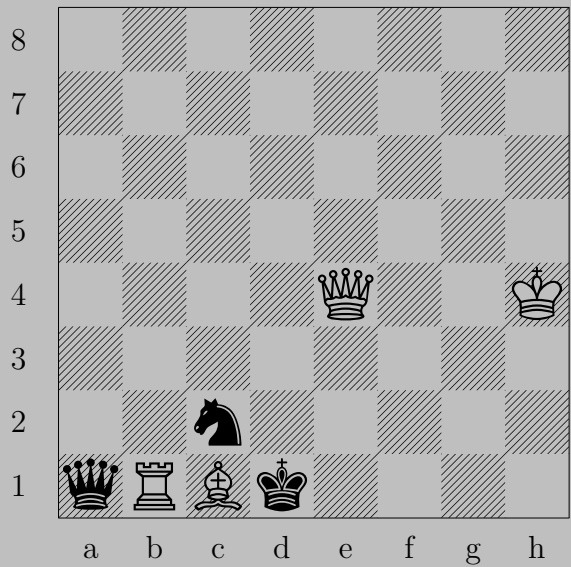


♗d6

If ♔c3, ♖f3. If ♔e3, ♖b3.



1820



I. Gegelski, 1958

1820

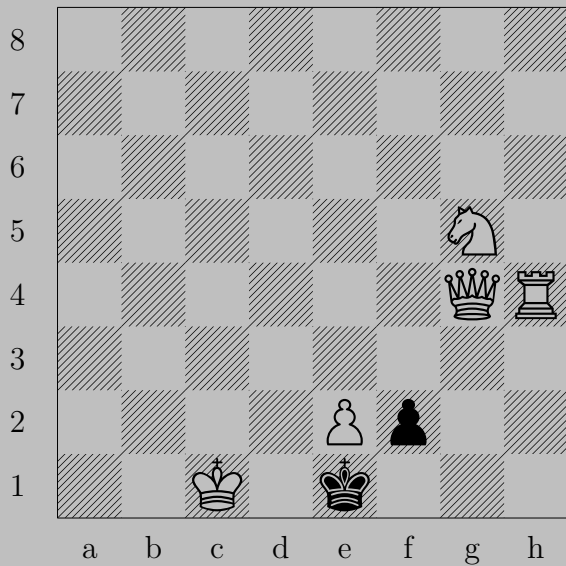


♔g2

If ♔a4+ or ♔d4+, ♕f4. If ♔f6+, ♕g5. If ♔h8+, ♕h6.

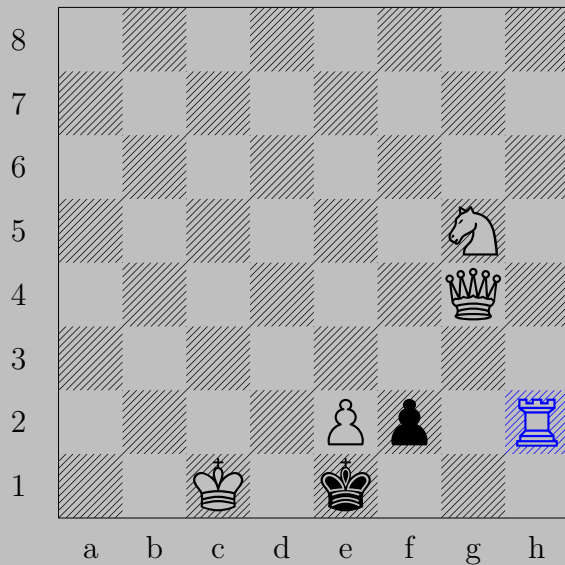
If ♖e1 or ♗a5 or ♗c3, ♕d2. Otherwise, ♕d2

1821



I. Gegelski, 1938

1821



$\text{R}h2$

If  $\text{Q}f1$ ,  $\text{R}h1$ . If  $\text{B}f1$  ( $\text{N}$ ),  $\text{N}f3$ .

Otherwise,  $\text{Q}b4$ .

1822



B. Genkin, 1964

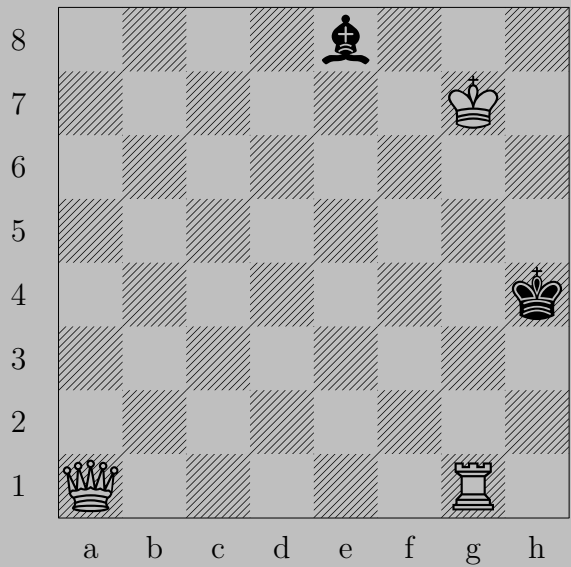
1822



♔e7

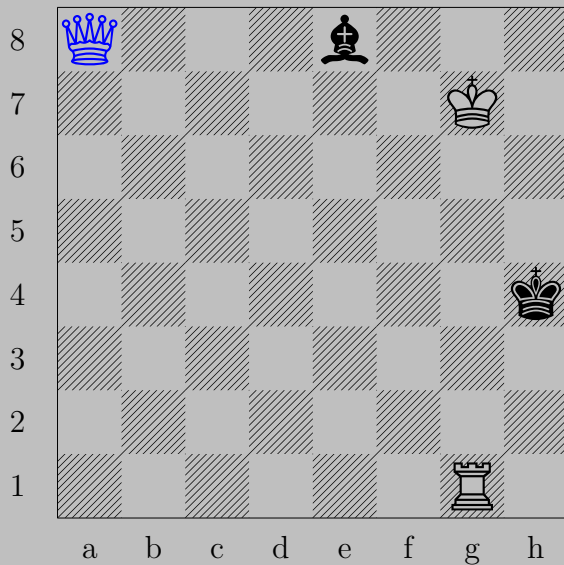
If ♖xc4, ♙c5. If ♖xe4, ♙e5.

1823



A. George, 1984

1823



♔a8

If ♕d7 or ♕c6, ♔h8.

Otherwise, ♔h1.



1824



I. Gersits, 1930

1824

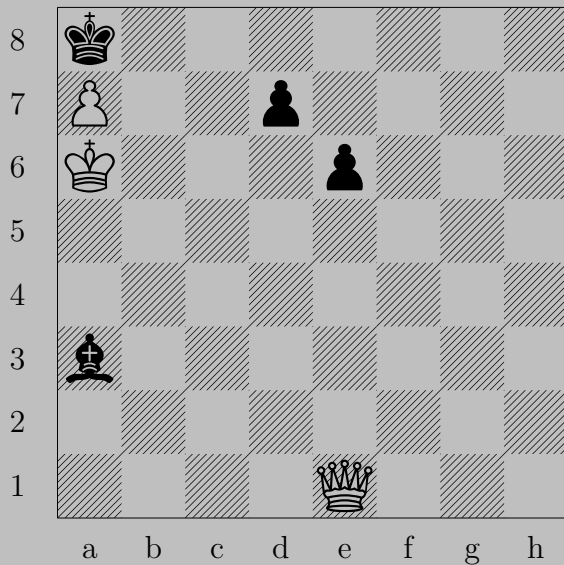


$\text{♞f6}$

If  $\text{♕}\times\text{e3}$ ,  $\text{♞e2}$ . If  $\text{♙a4}$ ,  $\text{♞}\times\text{a4}$ .

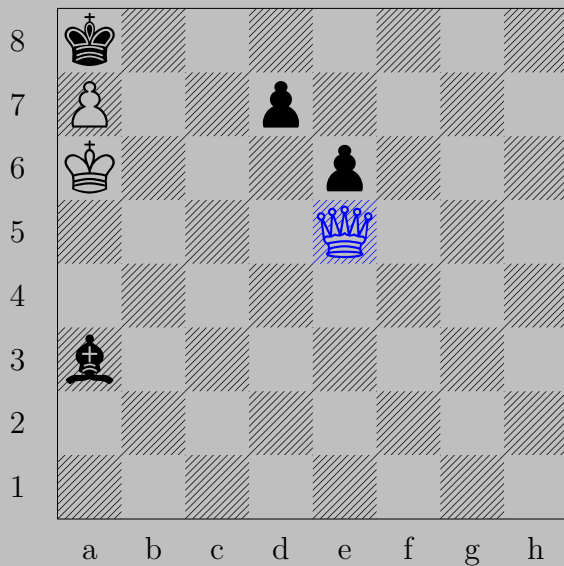
Otherwise,  $\text{♞d5}$ .

1825



N. M. Gibbins, 1916

1825

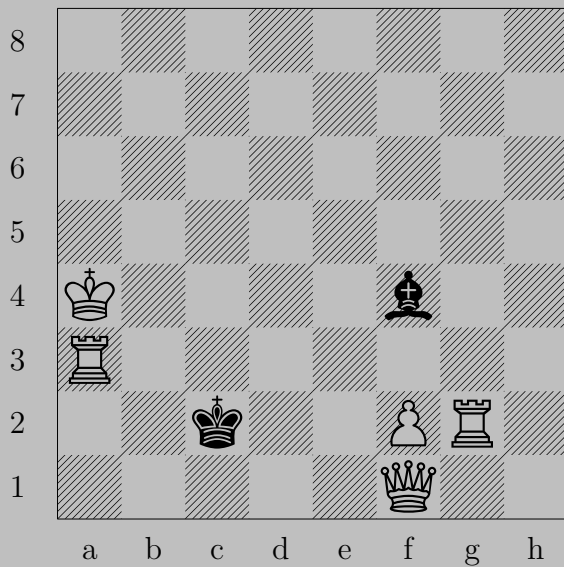


♙e5

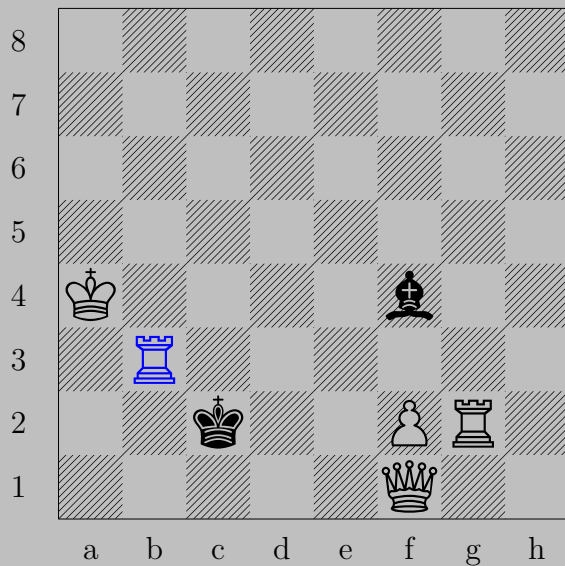
If ♖d6, ♙h8. If ♘d6, ♙e4.

Otherwise, ♙b8.

1826



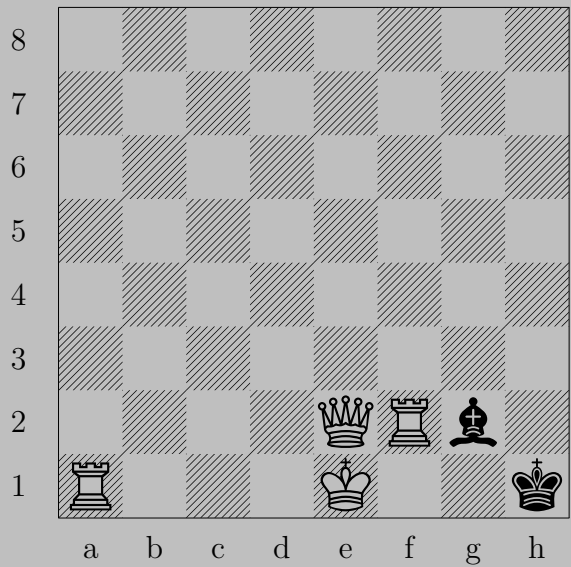
B. Göbel, 1927



$\text{Rb3}$

If  $\text{Kd2}$ ,  $\text{P3}$ . If  $\text{Kc1}$ ,  $\text{Qd3}$ . If  $\text{Kd2}$ ,  $\text{Qb1}$ . If  $\text{Ke3}$ ,  $\text{Px3}$ . If  $\text{Kg3}$ ,  $\text{Pxg3}$ .  
 Otherwise,  $\text{Pf4}$ .

1827



B. Göbel, 1945

1827

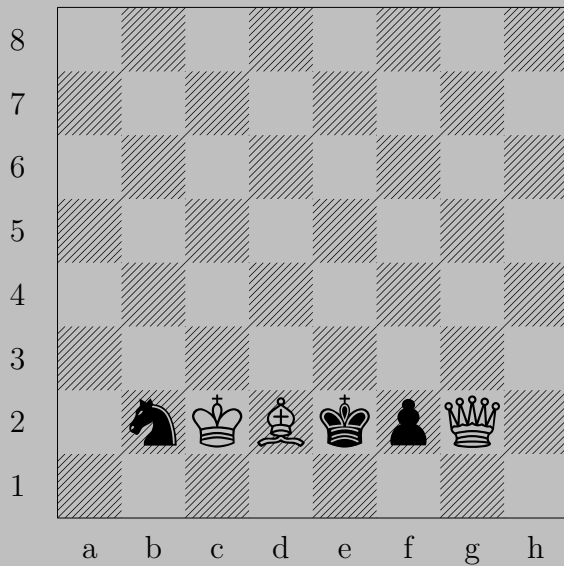


♙e4

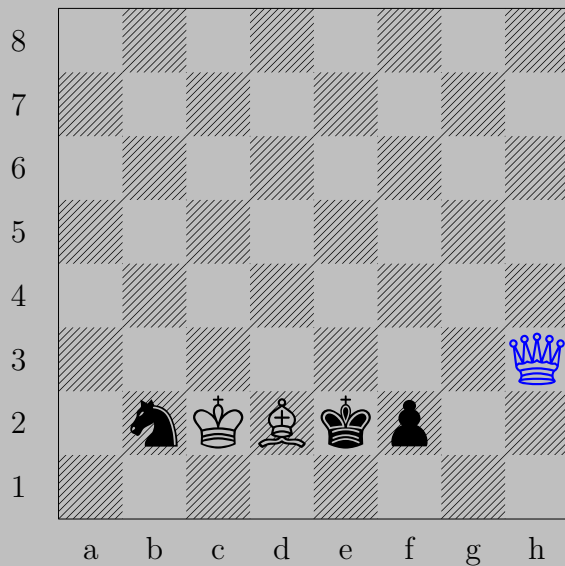
If ♟×e4, O-O-O. If ♟f3, ♖d2. If ♚g1 or ♚h2, ♙×g2.



1828



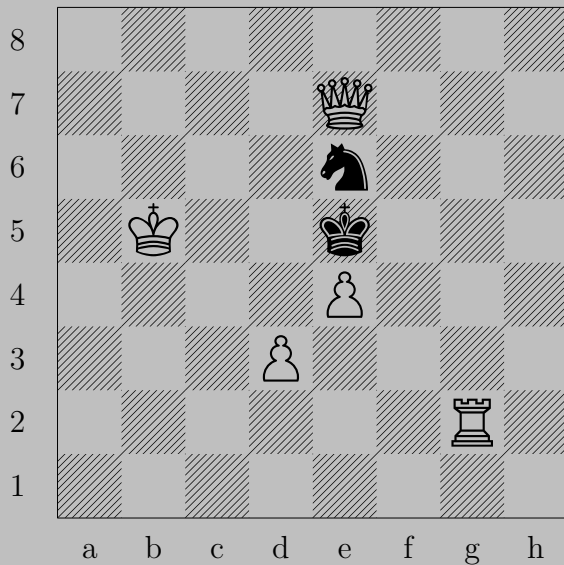
B. Göbel, 1923



♔h3

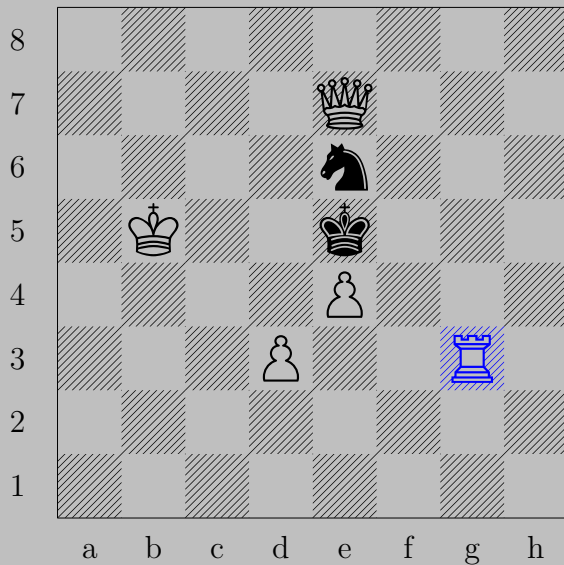
If ♘d1 or ♘c4 or ♘a4, ♔d3. If ♘d3, ♔x d3. If ♙f1(♘), ♔g2.  
Otherwise, ♔e3.

1829



G. Gnilomedov, 1971

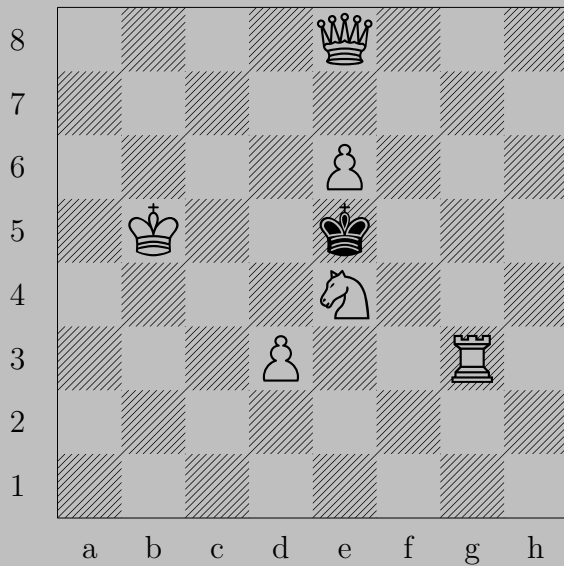
1829



♖g3

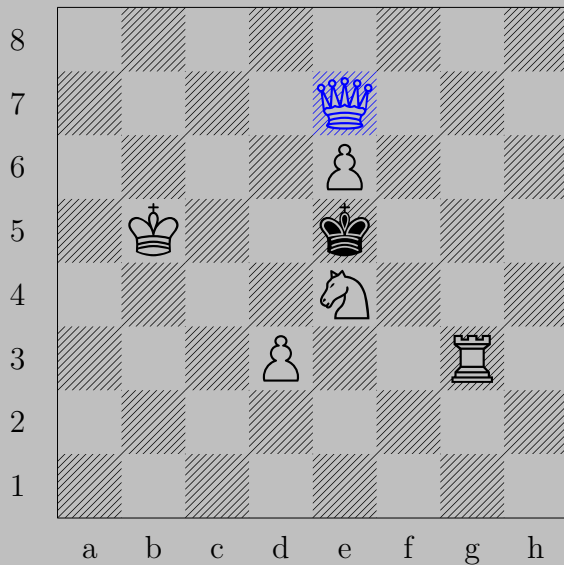
If ♔f4, ♕d6. If ♔d4, ♕f6.

1830



G. Gnilomedov, 1971

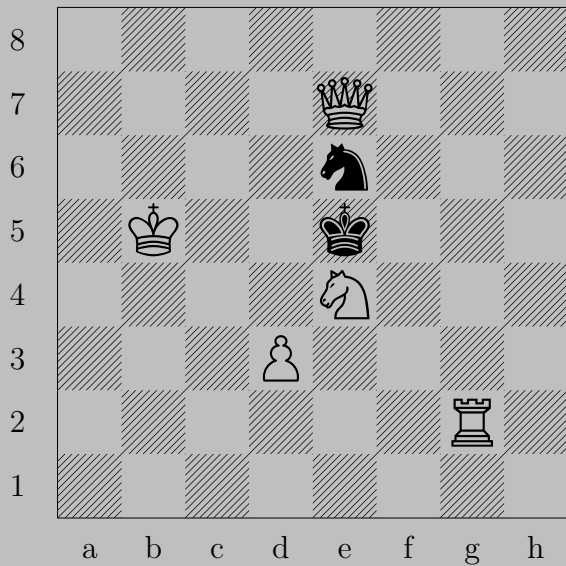
1830



♔e7

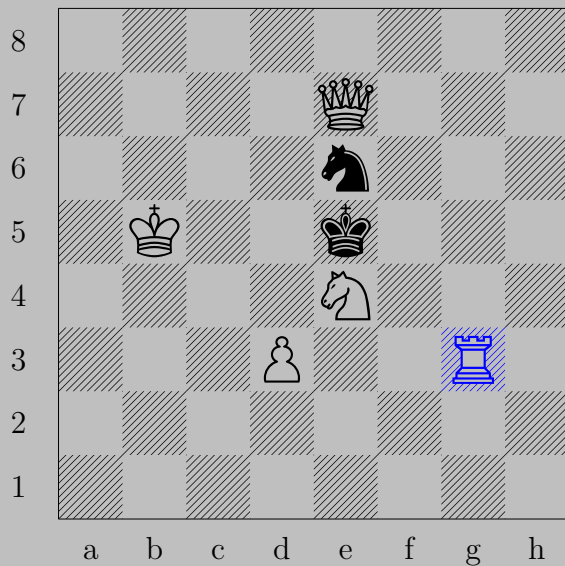
If ♔d5 or ♔d4, ♔d6. If ♔f5 or ♔f4, ♔f6.

1831



G. Gnilomedov, 1971

1831



♖g3

If ♔d4 or ♔d5, ♔d6. If ♔f4 or ♔f5, ♔f6.

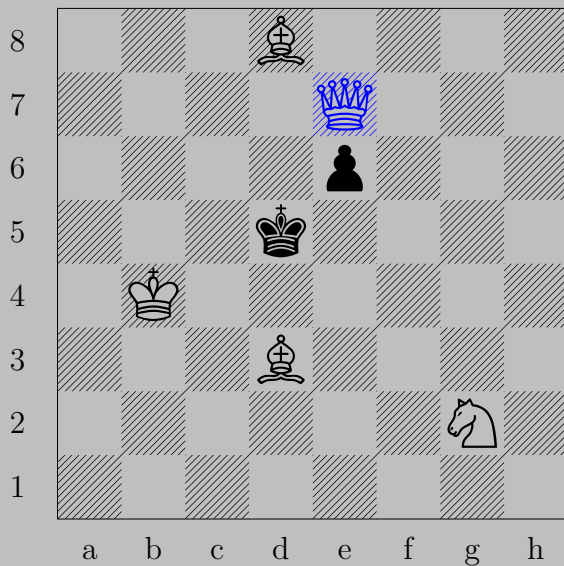


1832



G. Gnilomedov, 1971

1832



♔e7

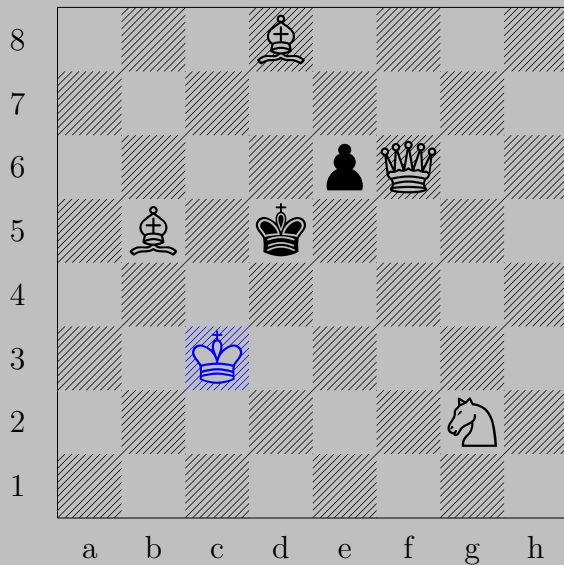
If ♔c6, ♕e4. If ♔d4, ♖d6. If ♔e5, ♖c5. If ♖e5, ♖d7.

1833



G. Gnilomedov, 1971

1833



♔c3

If ♔c5, ♚e5. If ♔d6, ♚d4. If ♔e4, ♙e6. If ♗e5, ♚e6.

1834



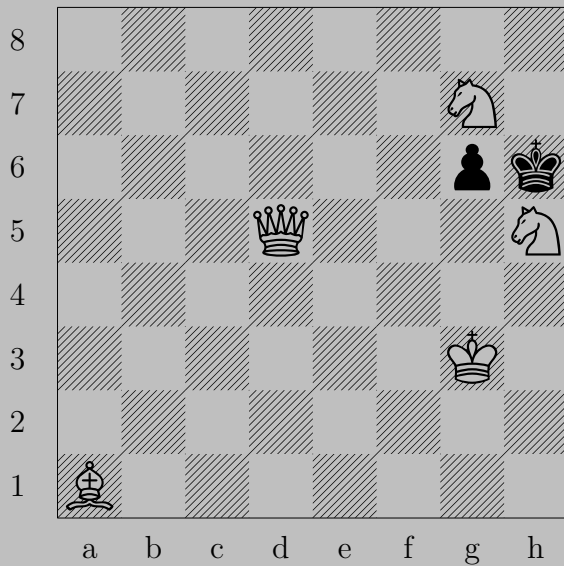
G. Gnilomedov, 1974



♔h1

If ♖xh5, ♔xh5. If ♖g5, ♘f4. If ♔g5, ♔c1. If ♔h7, ♘f6.

1835



G. Gnilomedov, 1974

1835

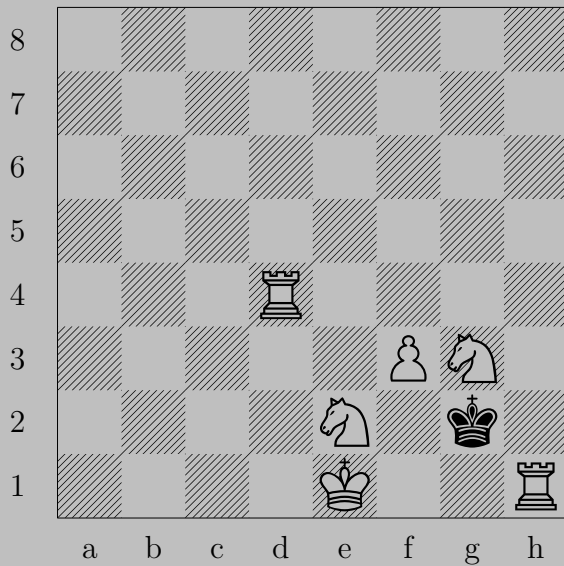


♙f7

If ♖xh5, ♙xh5. If ♖g5 or ♙h7, ♘f5. If ♙g5, ♙f4.

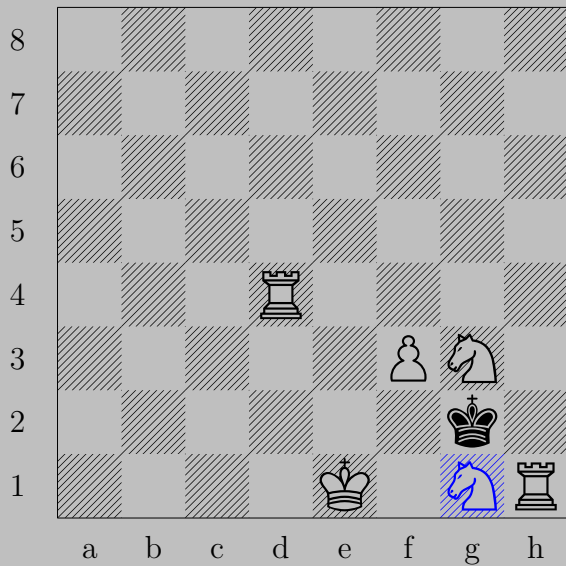


1836



J. Godal, 1965

1836



♞g1, ♔×g3  
♖g4

1837



V. Gofman, 1900

1837



♙d8

If ♙xf4 or ♙f6, ♙d4. If ♖e6, ♘d3.

1838



S. Gold, 1895

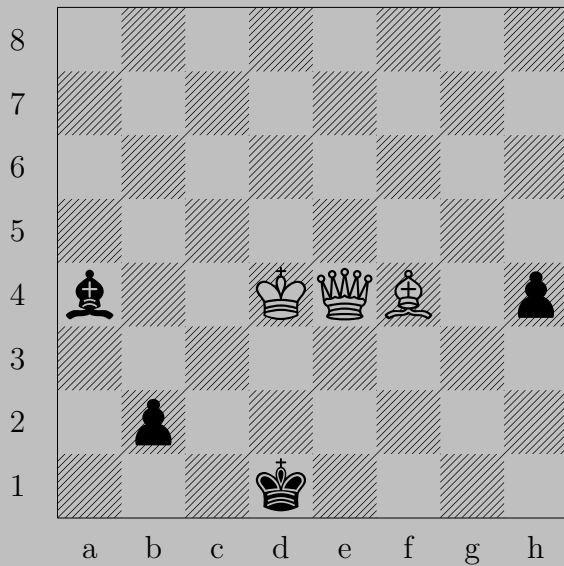
1838



♙d8

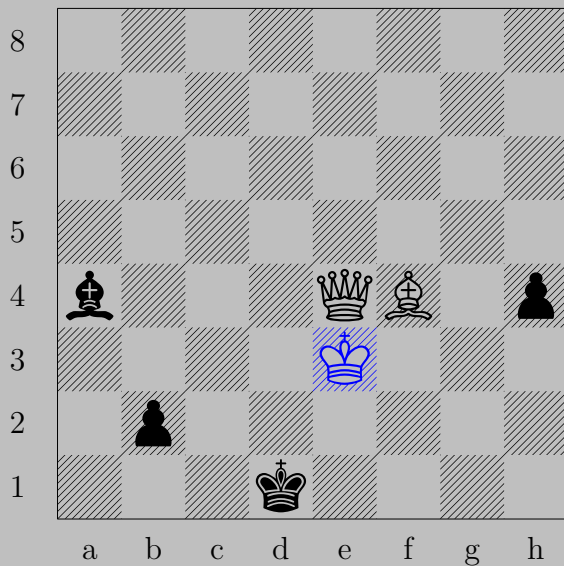
If ♖e2, ♙g4. If ♚g3, ♖b3.

1839



S. Gold, 1902

1839



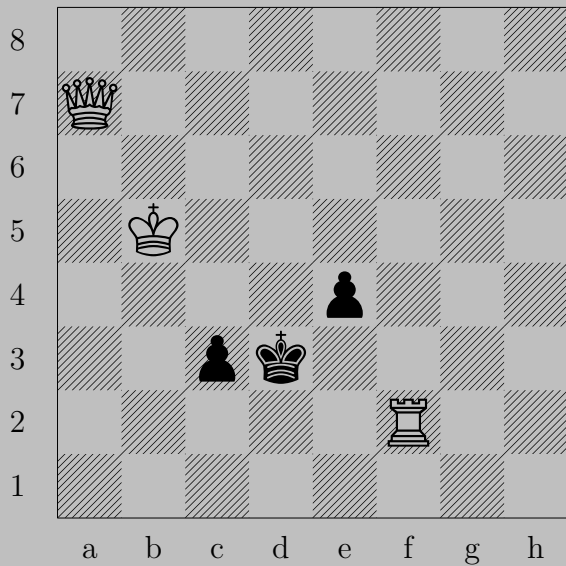
$\text{K}e3$

If  $\text{K}c1$ ,  $\text{K}e2$ . If  $\text{B}c2$  or  $\text{K}e1$ ,  $\text{K}h8$ . If  $\text{P}b1$ ,  $\text{K}xb1$ .

Otherwise,  $\text{K}b1$ .

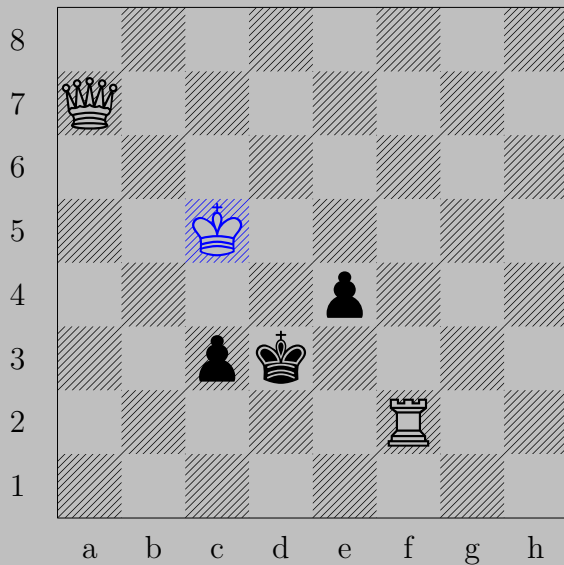


1840



S. Gold, 1902

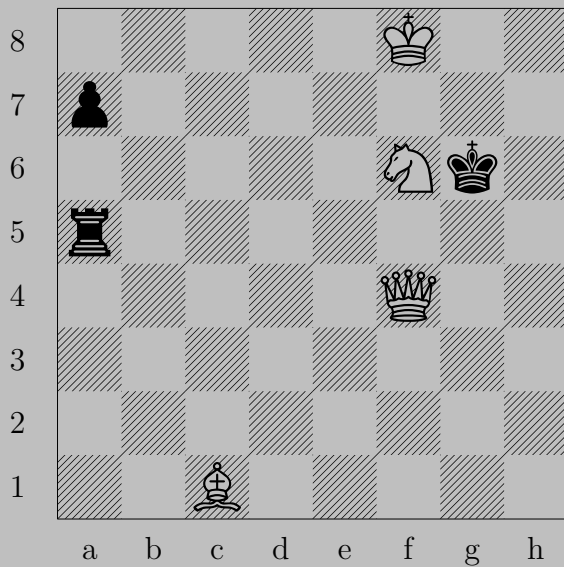
1840



♔c5

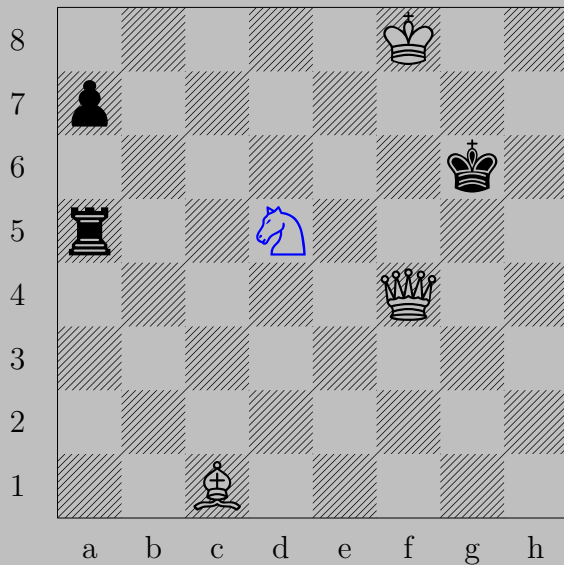
If ♖c2, ♕a3. If ♔e3, ♔c4. If ♖e3, ♕h7.

1841



C. Goldschmeding, 1953/54

1841

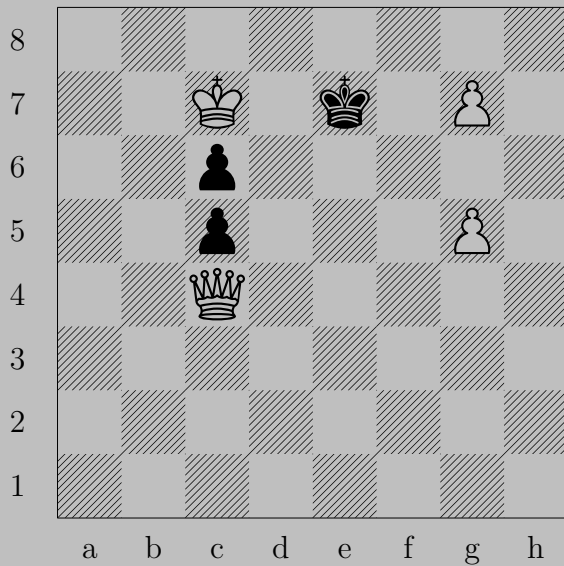


♞d5

If ♔h5, ♚g5. If ♔h7, ♚h6.

Otherwise, ♚f7.

1842



E. Goldschmiedt, 1926

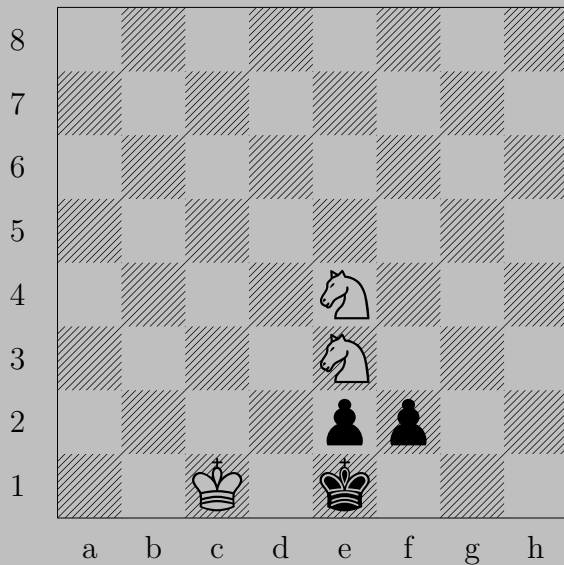
1842



$\text{♖g8}$  (♖),  $\text{♔e8}$  or  $\text{♔f8}$

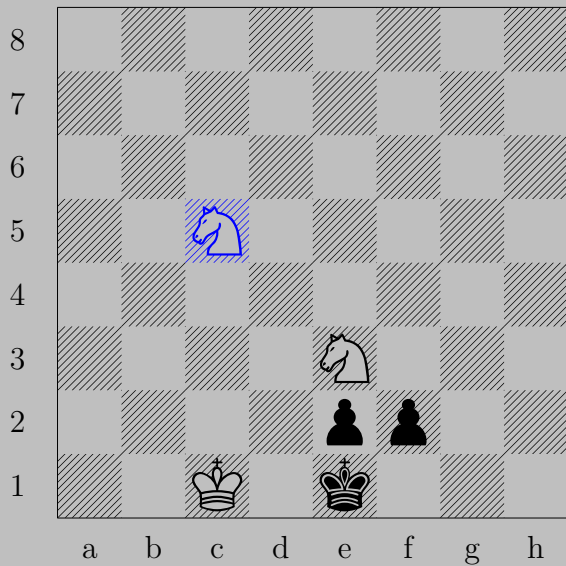
$\text{♕f7}$

1843



E. Goldschmiedt, 1926

1843

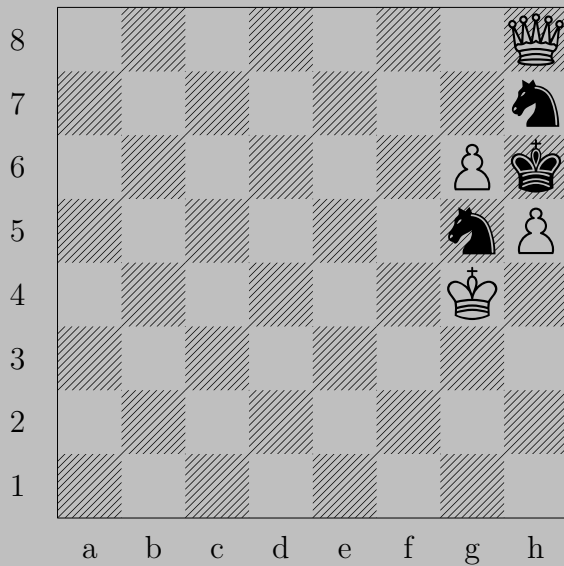


♞c5, ♔f1

♞d3

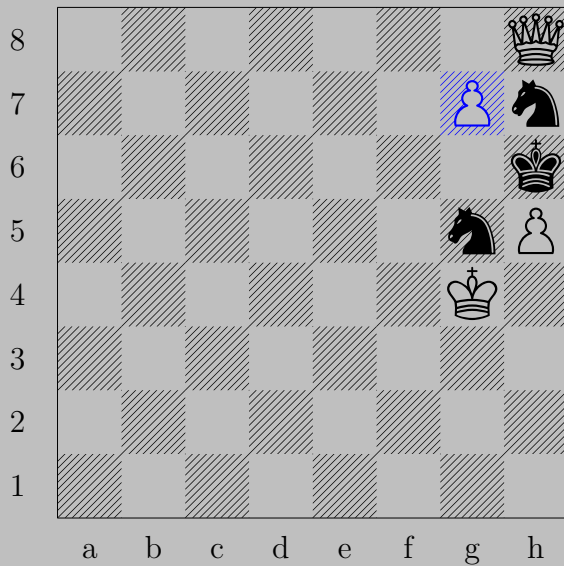


1844



E. Goldschmiedt, 1926

1844



♙g7, anything

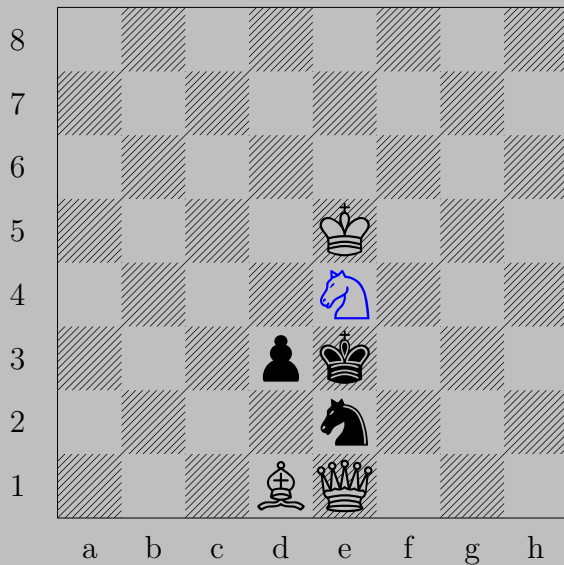
♙g8(♞)

1845



E. Goldschmiedt, 1927

1845



$\text{N}e4$

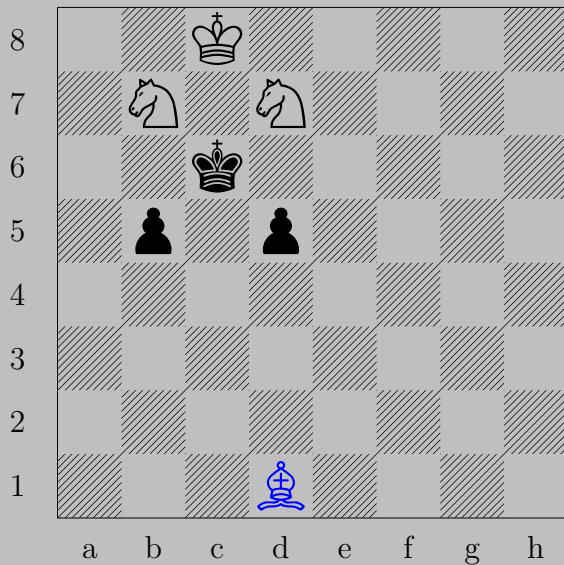
If  $\text{P}d2$ ,  $\text{K}xe2$ . If  $\text{K}f3$ ,  $\text{K}g3$ .

1846



E. Goldschmiedt, 1927

1846



♙d1

if ♖b4, ♙a4. If ♖d4, ♙f3.

1847



H. von Gottschal, 1892

1847



$\text{♔f5}$   
 If  $\text{♖xf5}$ ,  $\text{♖g8}$ ( $\text{♘}$ ). If  $\text{♔xf5}$ ,  $\text{♙f3}$ . If  $\text{♔xf7}$  or  $\text{♔e7}$ ,  $\text{♙xe6}$ . If  $\text{♖e5}$ ,  $\text{♙e6}$ .



1848



H. von Gottschal, 1926

1848



♙h1, ♚×h1

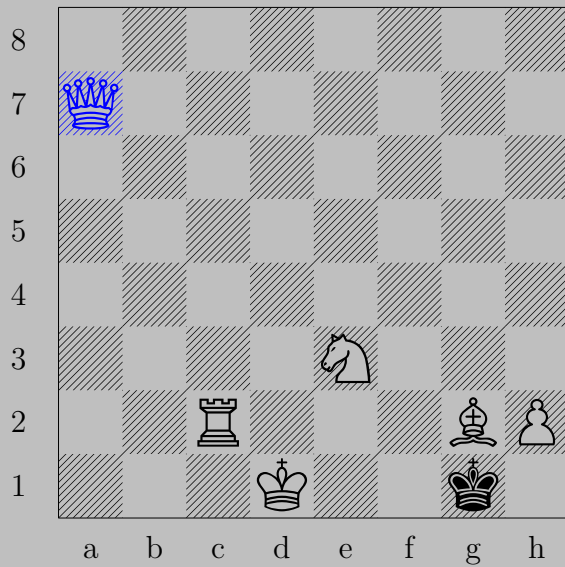
♖c1

1849



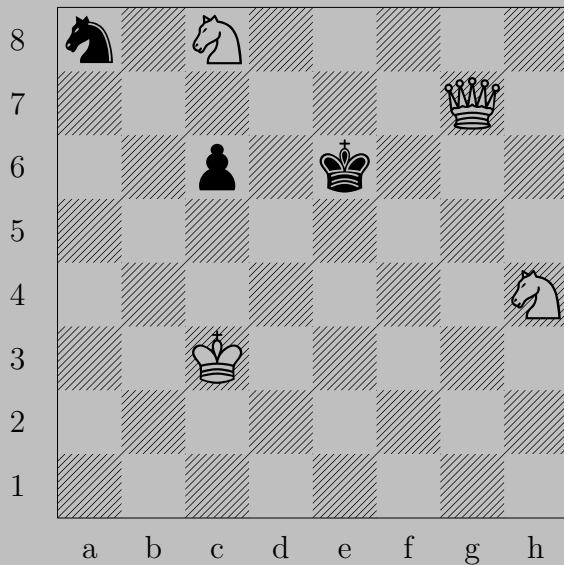
H. von Gottschal, 1926

1849



♙a7, ♚xh2  
♞f1

1850



H. von Gottschal, 1907

1850

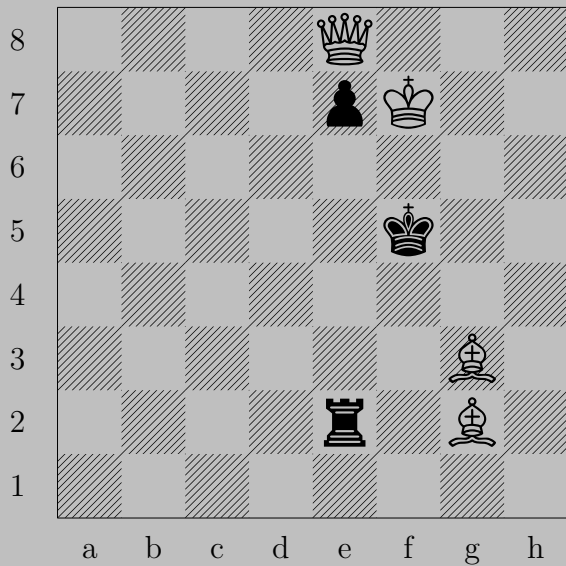


♚h7

If ♚f6, ♚e7.

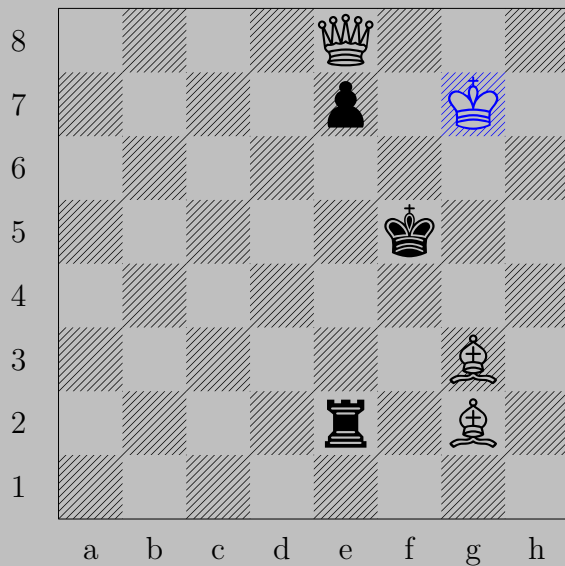
Otherwise, ♚f5.

1851



M. Gordian, 1923

1851



♔g7

If ♖e6, ♕h5. If ♔e6, ♕c8.

Otherwise, ♕g6.



1852



M. Gorislavsky, 1971

1852



♔b4

If ♖e6 or ♖e7, ♖d6. If ♔a6, ♔a5. If ♖c6, ♔c5.

1853



M. Gorislavsky, 1971

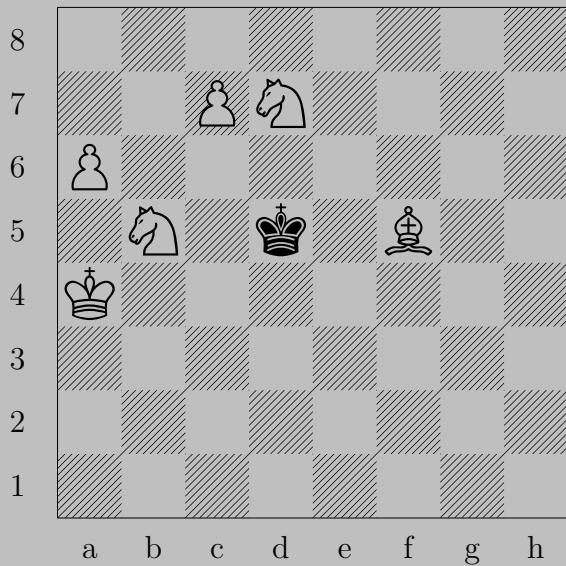
1853



♖b1

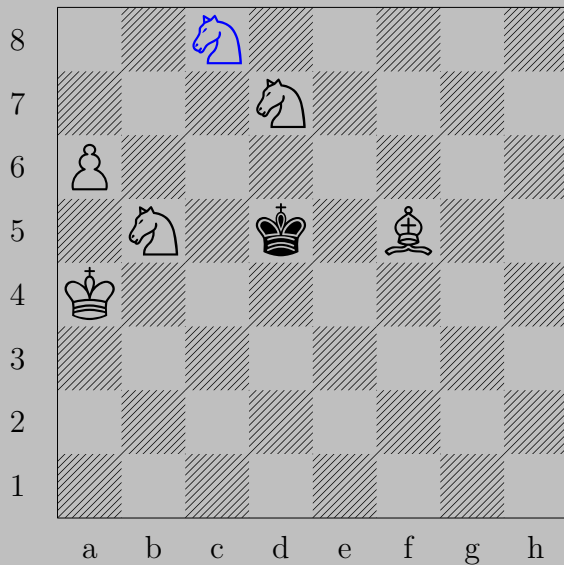
If ♘e6, ♙xe6. If ♘e7, ♙g6. If ♔a6, ♙c6.

1854



M. Gorislavsky, 1971

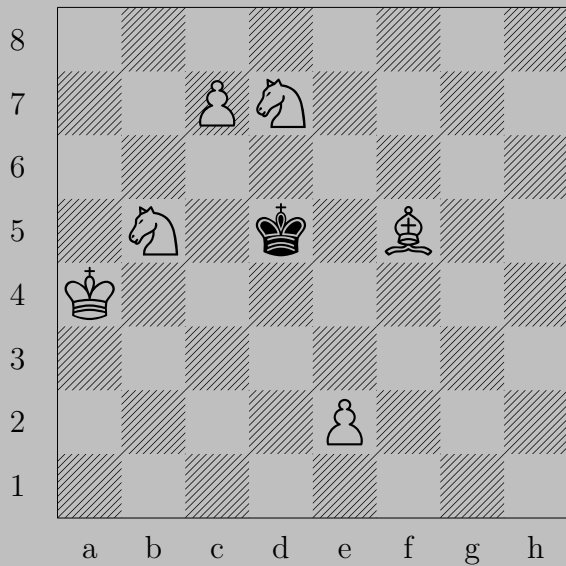
1854



♙c8(♘)

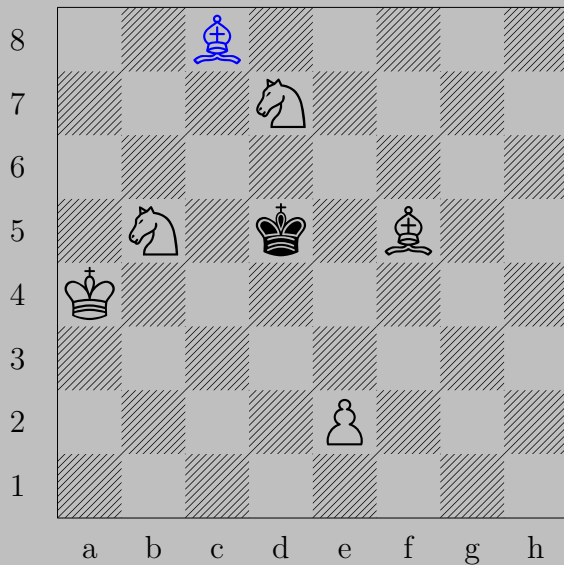
If ♚c4, ♘b6. If ♚c6, ♘e7.

1855



M. Gorislavsky, 1971

1855

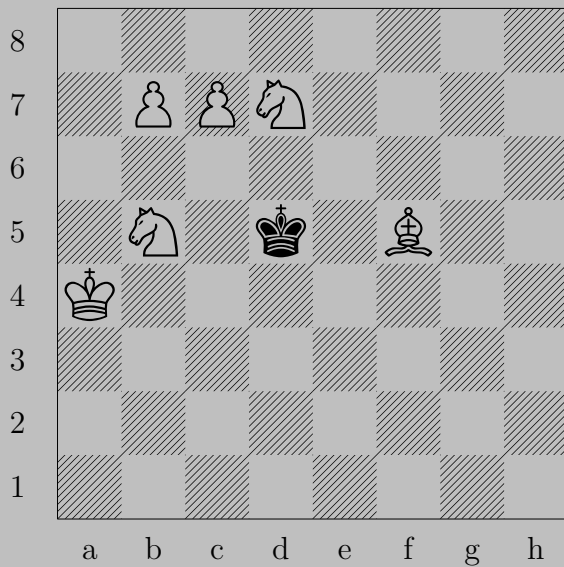


$\text{♗c8}$  (♗)

If  $\text{♗c4}$ ,  $\text{♘e6}$ . If  $\text{♗c6}$ ,  $\text{♘e4}$ .

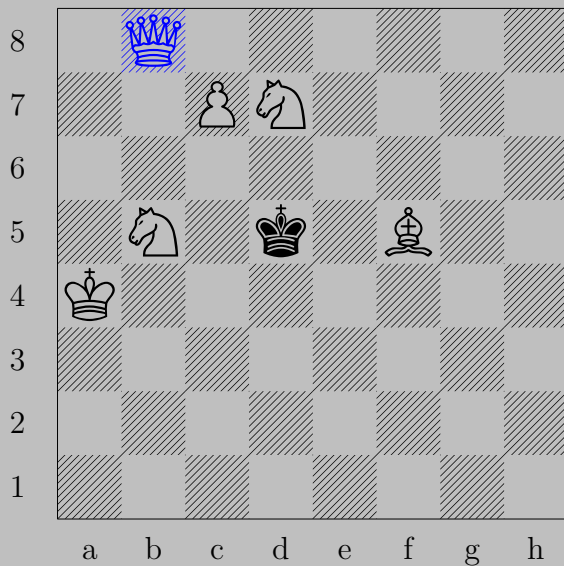


1856



M. Gorislavsky, 1971

1856



♙b8(♔)

If ♔c4, ♕g8. If ♔c6, ♕a8.

1857



M. Gorislavsky, 1983

1857



♙f1

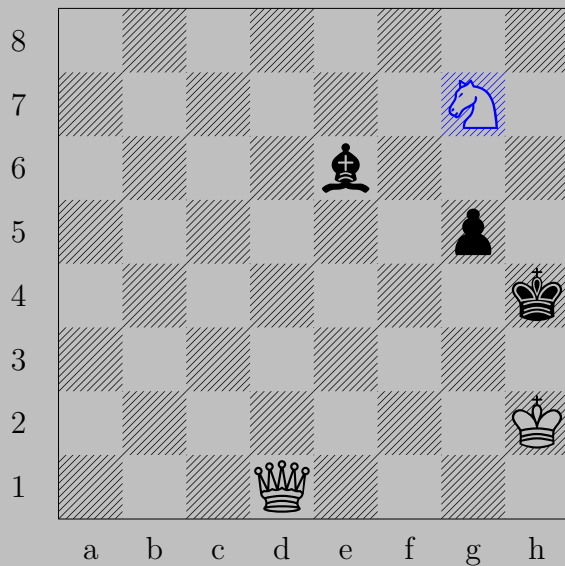
If ♘b5 or ♖b5, ♙a1. If ♖c4, ♙xc4. If ♙a5, ♖a3.

Otherwise, ♙a6.

1858



H. Le Grand, 1953



$\text{Ng7}$

If  $\text{Bg4}$ ,  $\text{Qd8}$ . If  $\text{Bg4}$ ,  $\text{Qe1}$ . If  $\text{Bf7}$ ,  $\text{Nf5}$ .

Otherwise,  $\text{Qh5}$ .

1859



H. Le Grand, 1936

1859



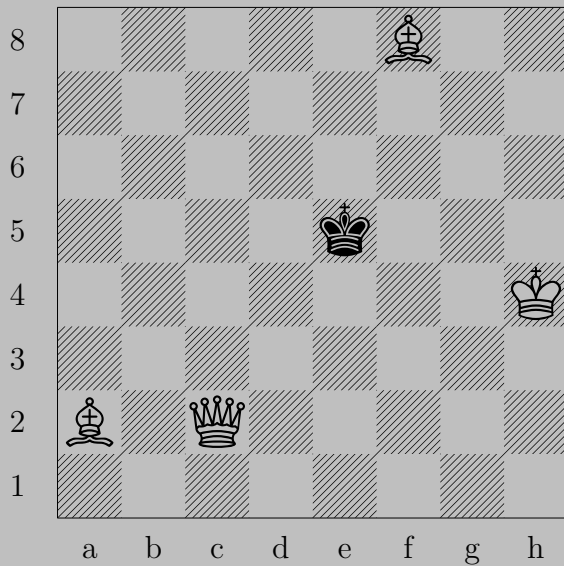
♔g4

If ♖g3, ♘f2. If ♖f3+, ♔xf3.

Otherwise, ♔g2.



1860



W. Greenwood, 1880

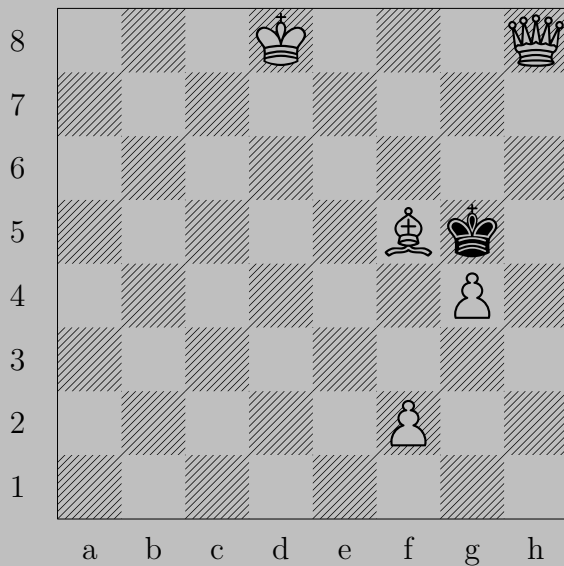
1860



♞b1

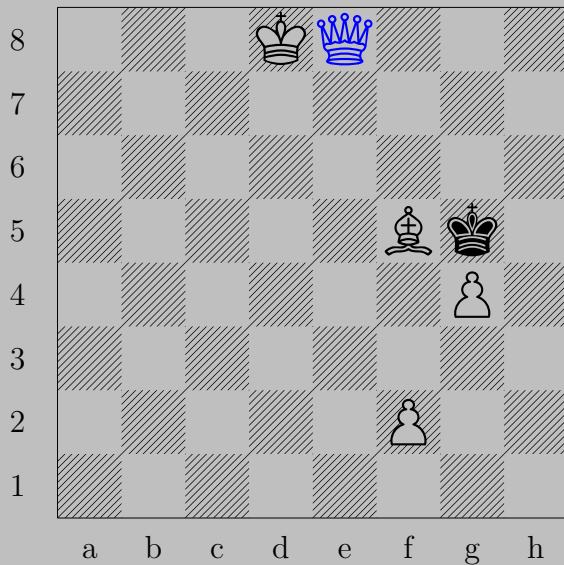
If ♔d4, ♚c5. If ♔d5 or ♔f4, ♚e4. If ♔e6 or ♔f6, ♚f5.

1861



R. Grewe, F. Karge, H. Voight, 1940

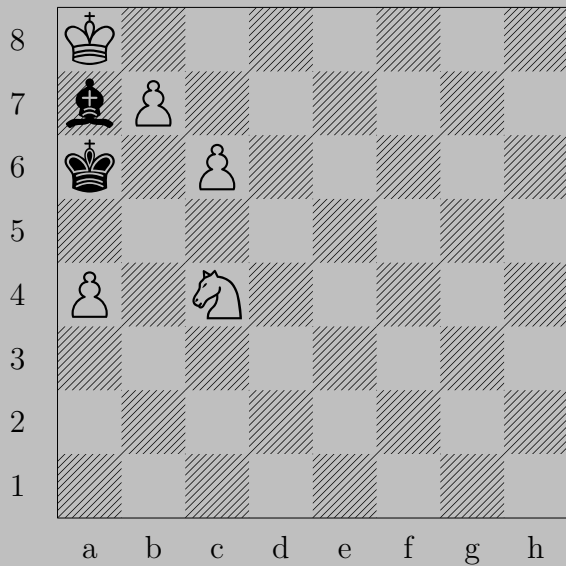
1861



♔e8

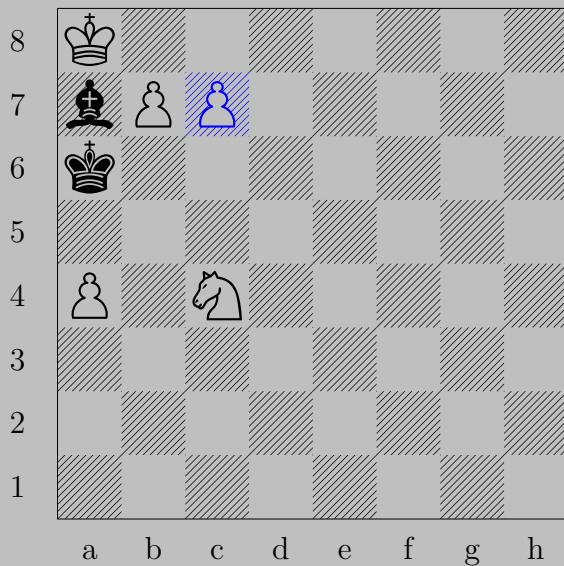
If ♔f4, ♕e3. If ♔f6, ♕e7. If ♔h4, ♕h5. If ♔h6, ♕g6.

1862



A. Grin, 1972

1862

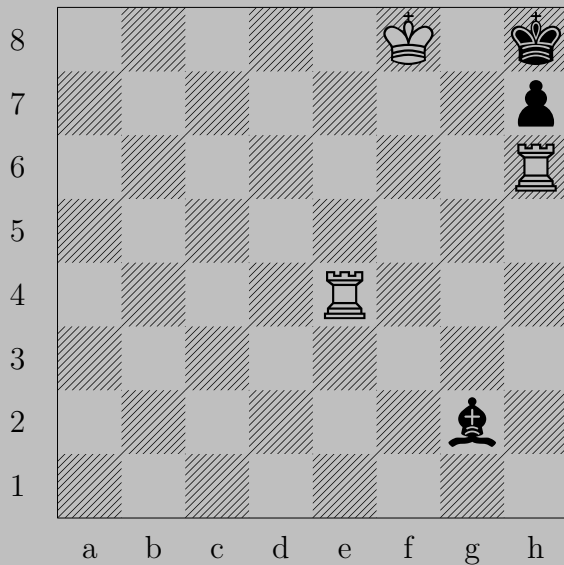


$\text{♞c7}$

If  $\text{♞b8}$ ,  $\text{♞}\times\text{b8}$ ( $\text{♞}$ )

Otherwise,  $\text{♞b8}$ ( $\text{♞}$ )

1863



A. Grin, 1985

1863



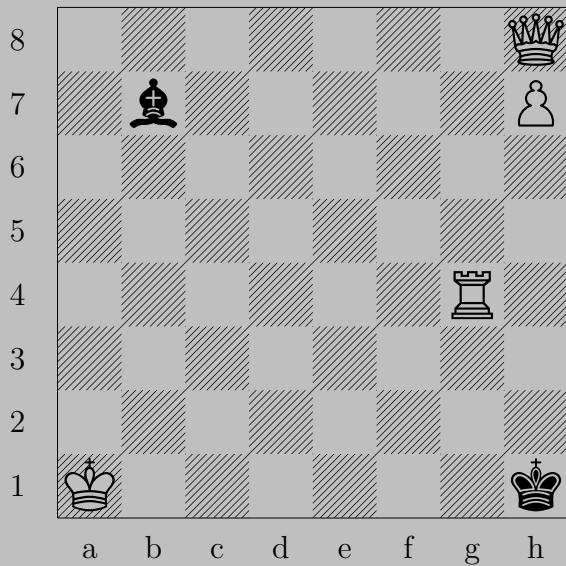
$\text{Rg6}$

If  $\text{Kh6}$ ,  $\text{Rh4}$ . If  $\text{Kh6}$ ,  $\text{Rxh6}$ . If  $\text{Kh5}$ ,  $\text{Rh6}$ .

Otherwise,  $\text{Rg8}$ .

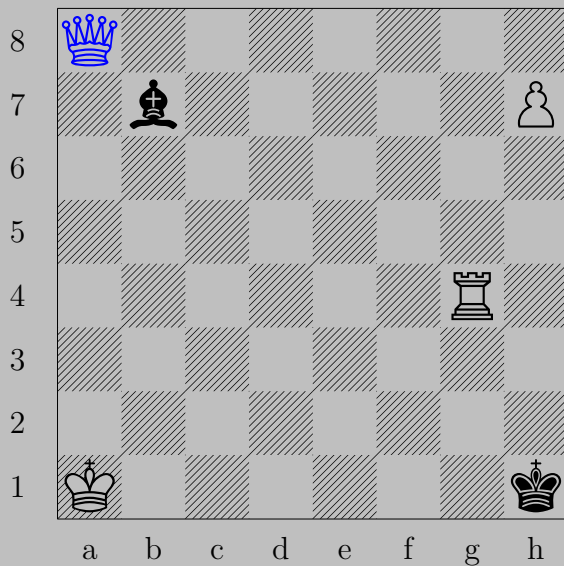


1864



A. Grin, 1954

1864

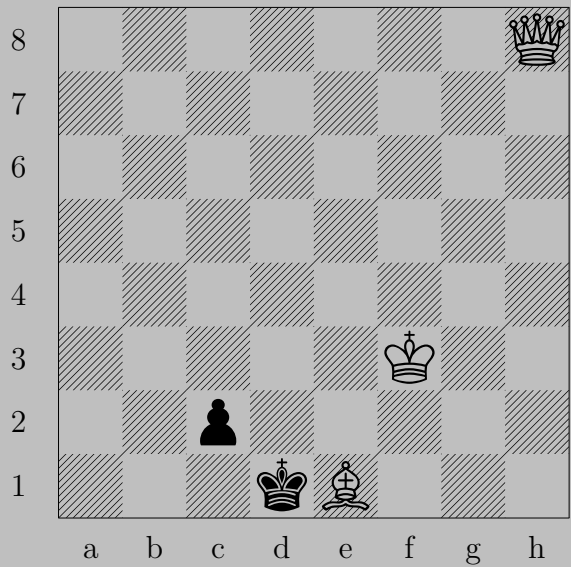


♔a8

If ♞g2, ♔×g2.

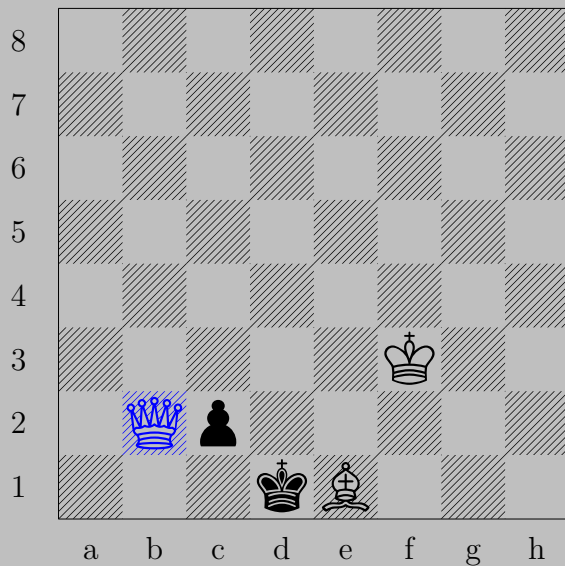
Otherwise, ♙h8(♔).

1865



A. Grin, 1987

1865

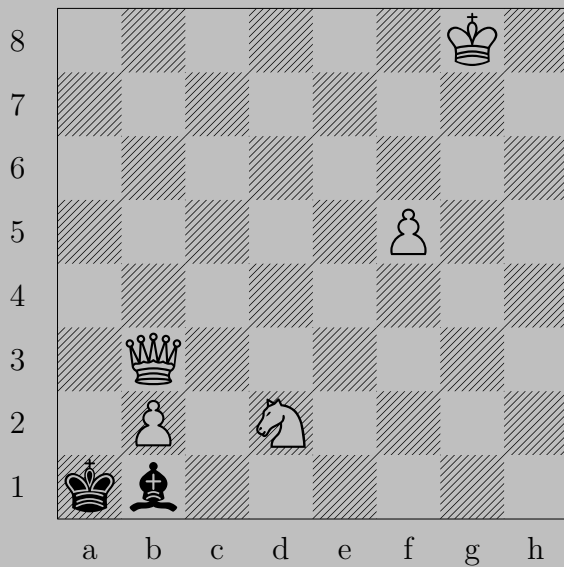


♔b2

If ♔×e1, ♔c1. If ♖c1(♘), ♔d2.

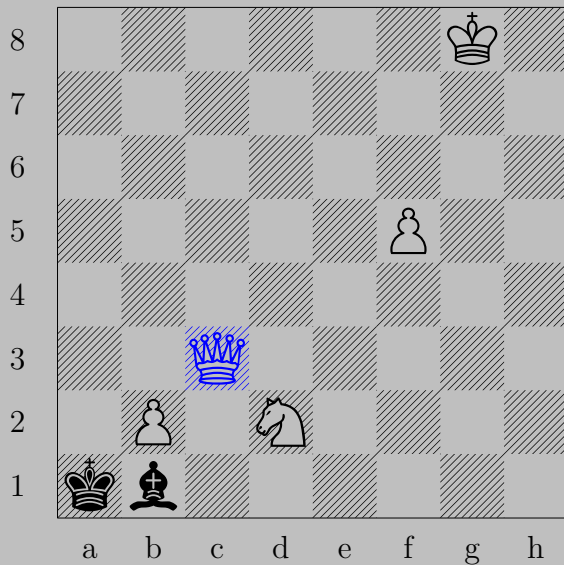
Otherwise, ♔e2.

1866



A. Grin, 1985/86

1866



♙c3

If ♔a2+, ♕b3.

Otherwise, ♙a3.

1867



D. Grinchenko, 1979

1867

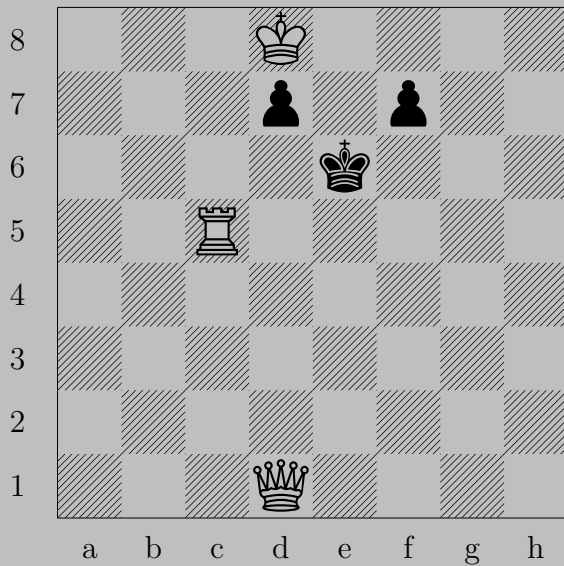


♙c3

If ♖d4, ♚d1. If ♔a4, ♚c4. If ♙c2, ♚b1.



1868



M. Grönroos, 1980

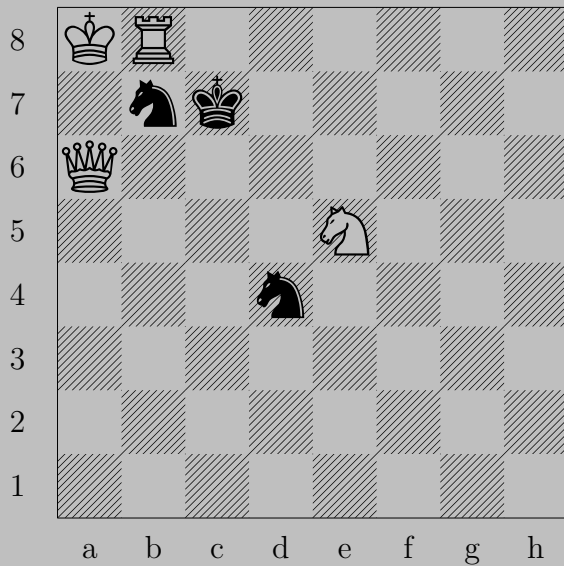
1868



♙h5

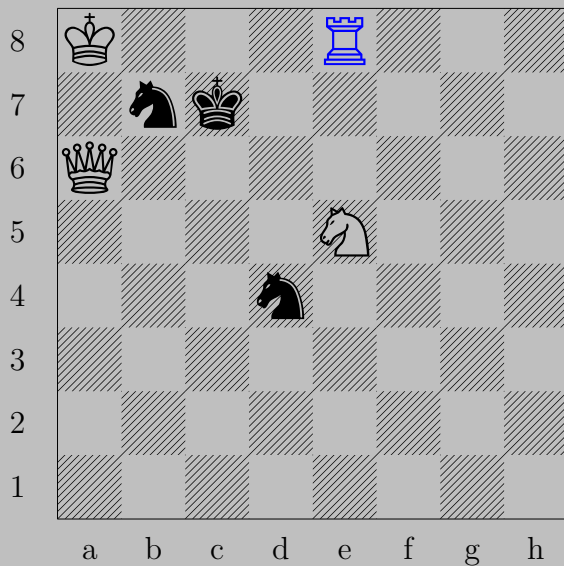
If ♘d6 or ♙f6, ♙h6. If ♘d5, ♖c6. If ♘f6 or ♙d6, ♙d5. If ♘f5, ♙g6.

1869



A. Grunenwald, 1950

1869

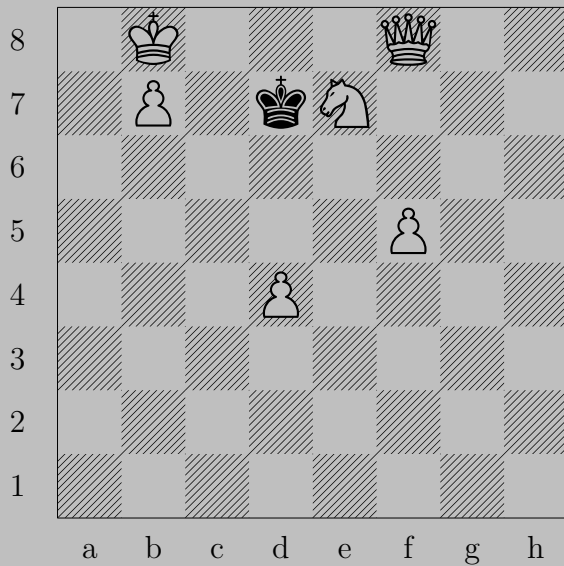


♖e8

If ♘d8, ♜e7. If ♘d6, ♙a5. If ♘a5 or ♘c5, ♜c8.

If ♘c6, ♙xc6. Otherwise, ♙c6.

1870



C. Groenveld, 1935

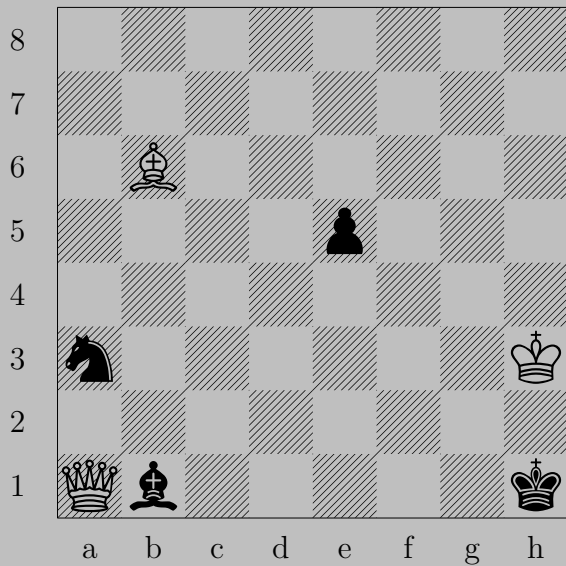
1870



♙f7

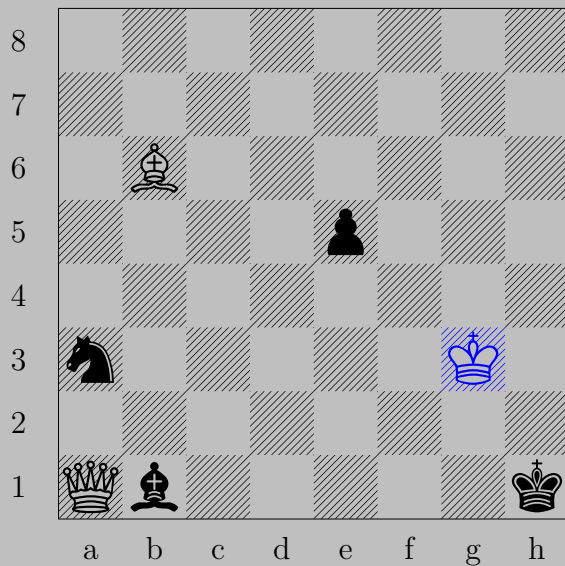
If ♔d6, ♙e6. If ♔d8, ♞d6.

1871



G. Guidelli, 1924

1871

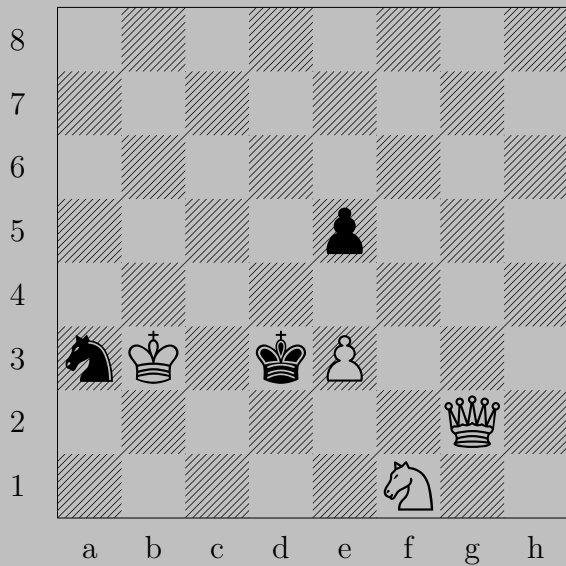


♔g3

If ♕e4, ♚h8. If ♘c2, ♚a8. If ♘b5 or ♘c4, ♚xb1.



1872



A. Gulyaev, 1936

1872

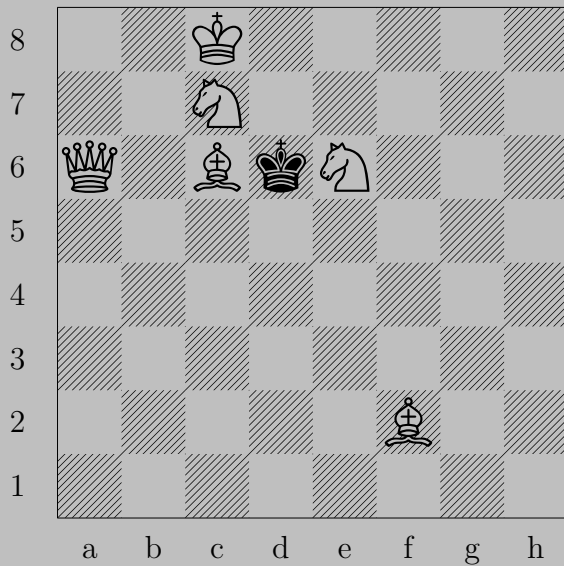


$\text{K}g4$

If  $\Delta e4$ ,  $\text{K}d1$ . If  $\text{N}c4$ ,  $\text{K}xc4$ .

Otherwise,  $\text{K}c4$ .

1873



A. Gulyaev, 1957

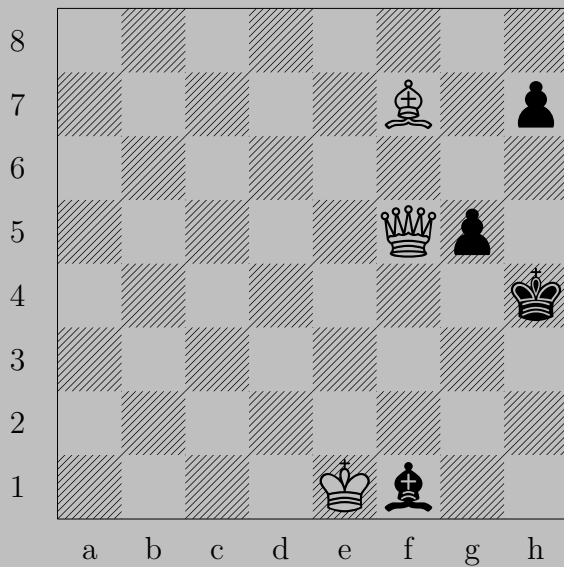
1873



♔f1

If ♖xc6, ♗a6. If ♖e5, ♘g3 If ♖e7, ♘c5.

1874



A. Gulyaev, 1929

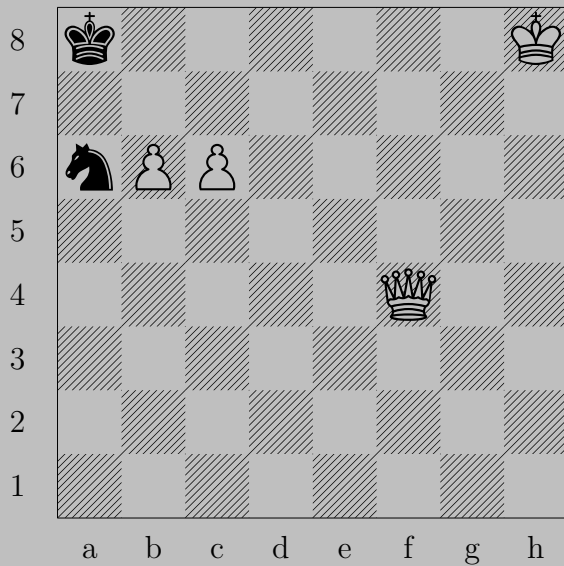
1874



$\text{♗e6}$

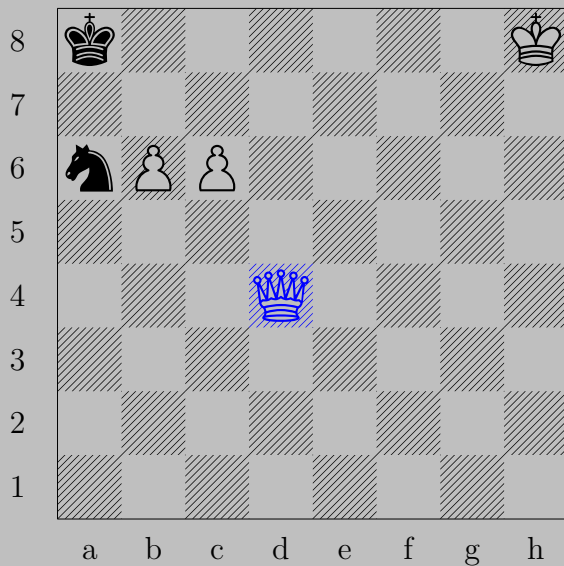
If  $\text{♜h5}$  or  $\text{♙g3}$ ,  $\text{♚f2}$ . If  $\text{♜h5}$ ,  $\text{♚xh7}$ . If  $\text{♗e2}$ ,  $\text{♚h3}$ . If  $\text{♗h3}$ ,  $\text{♚xh3}$ .  
If  $\text{♜g4}$ ,  $\text{♚xg4}$ . Otherwise,  $\text{♚g4}$ .

1875



J. Gunst, 1925

1875



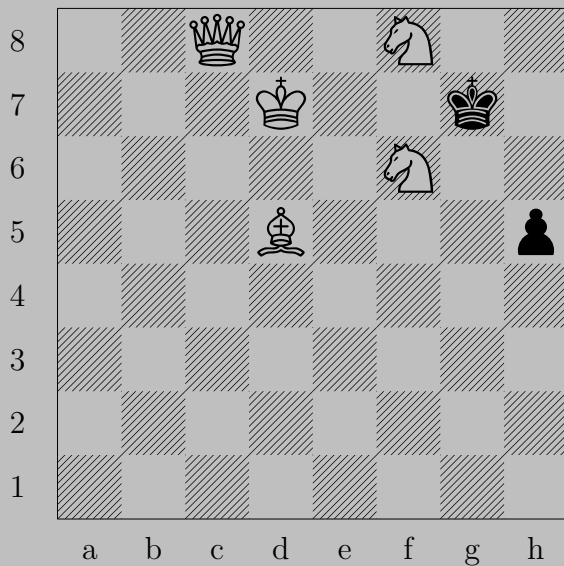
♙d4

If ♘b8, ♖b7.

Otherwise, ♙d8.

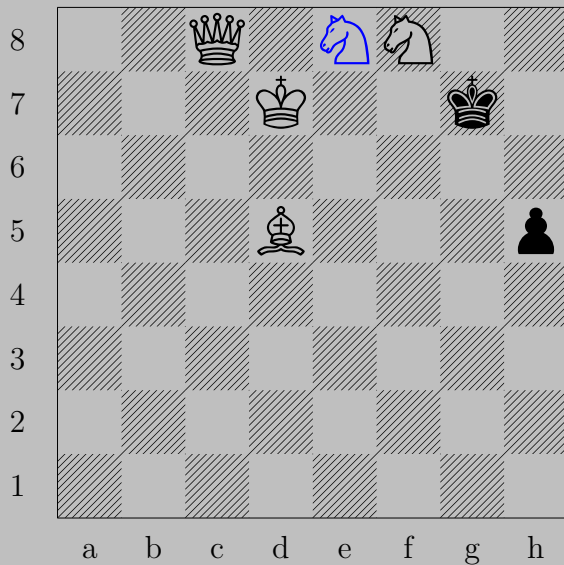


1876



E. M. H. Gutmann, 1930

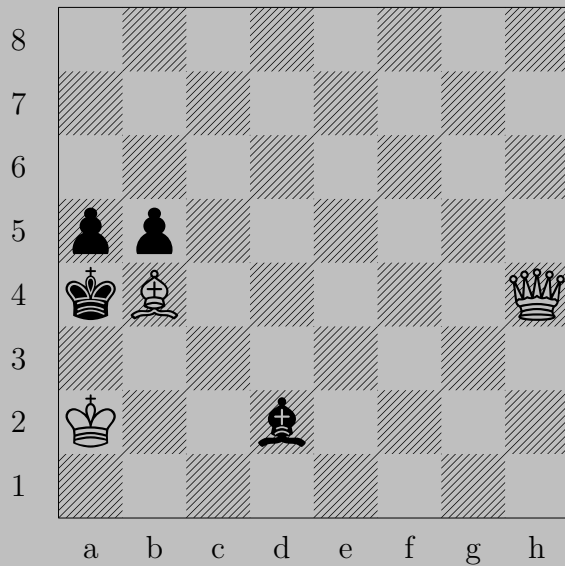
1876



♘e8+

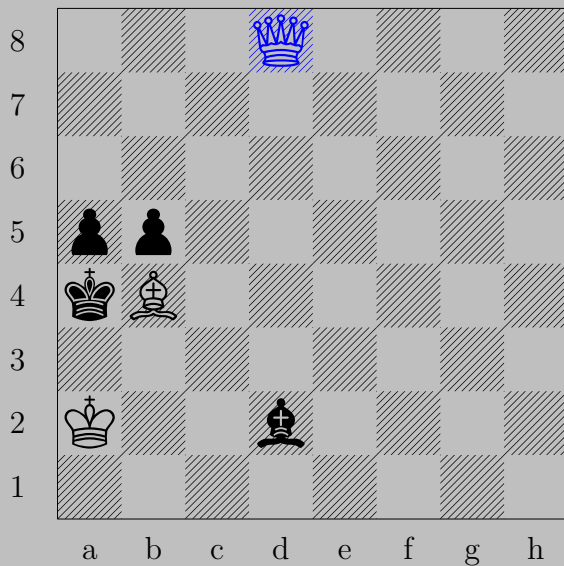
If ♔×f8, ♔c5. If ♔h8, ♔c3. If ♔h6, ♔c1.

1877



A. H., 1868

1877

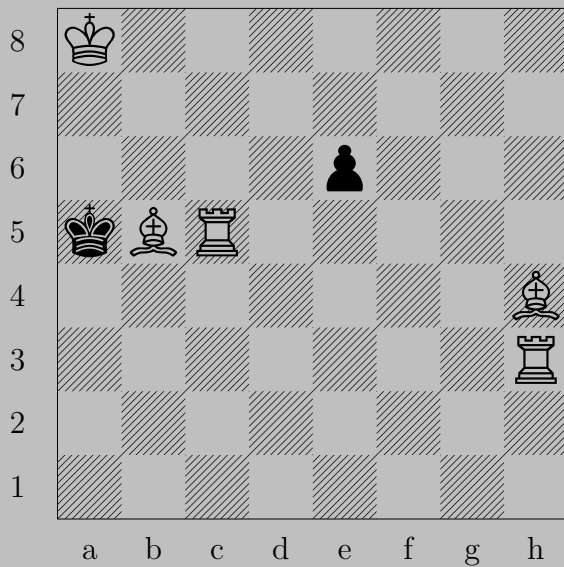


$\text{♔d8}$

If  $\text{♕xb4}$ ,  $\text{♔a8}$ . If  $\text{♗xb4}$ ,  $\text{♔d1}$ .

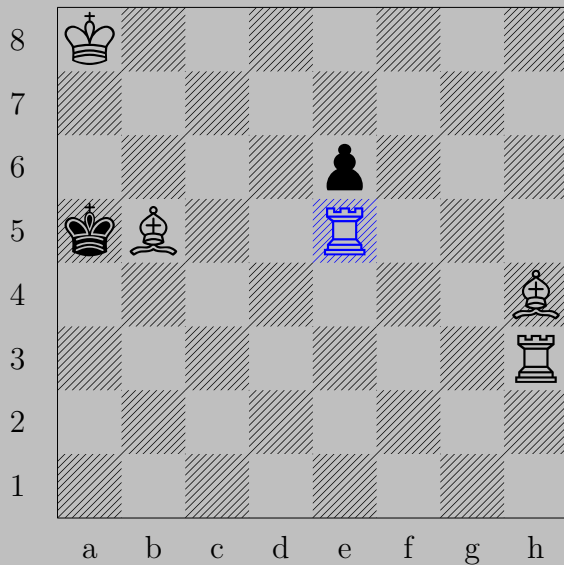
Otherwise,  $\text{♔xa5}$ .

1878



S. Hachaturov, 1972

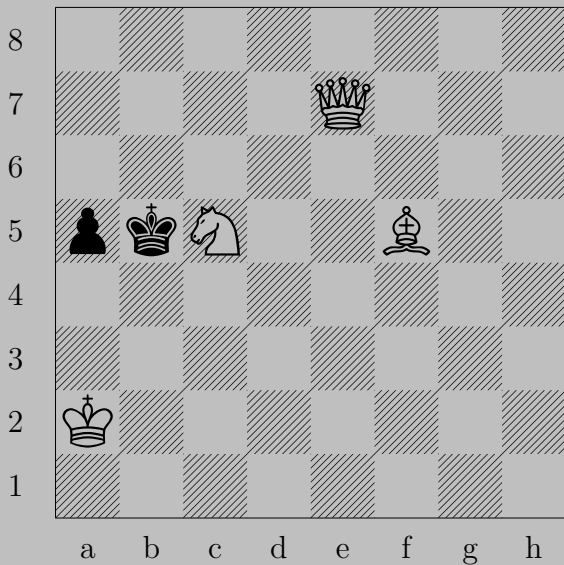
1878



♖e5

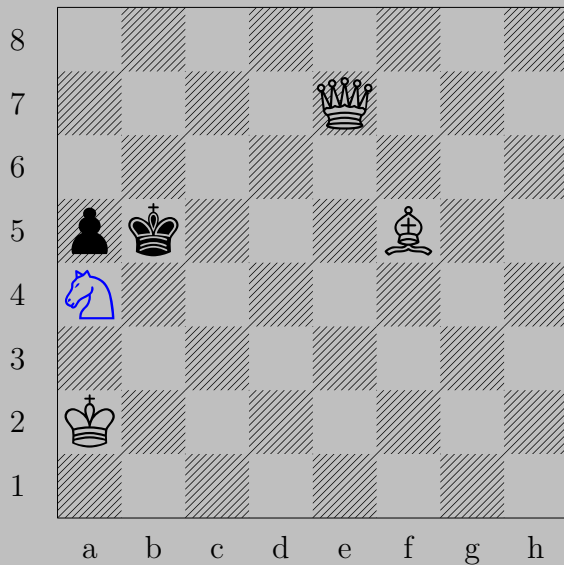
If ♔b4, ♕e1. If ♔b6, ♕d8.

1879



E. Hällström, 1903

1879

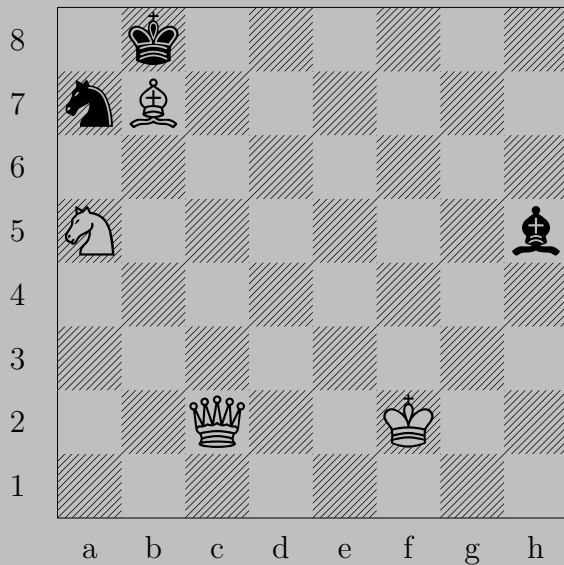


♞a4

If ♔×a4, ♙d7. If ♔a6, ♙d3. If ♔c6, ♚d7. If ♔c4, ♚c5.

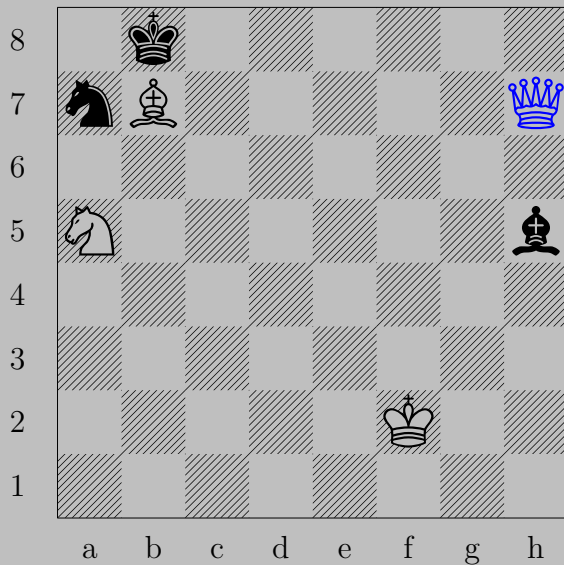


1880



E. Hällström, 1925

1880



♚h7

If ♖c6, ♖xc6. If ♖b5 or ♖c8, ♖c6.

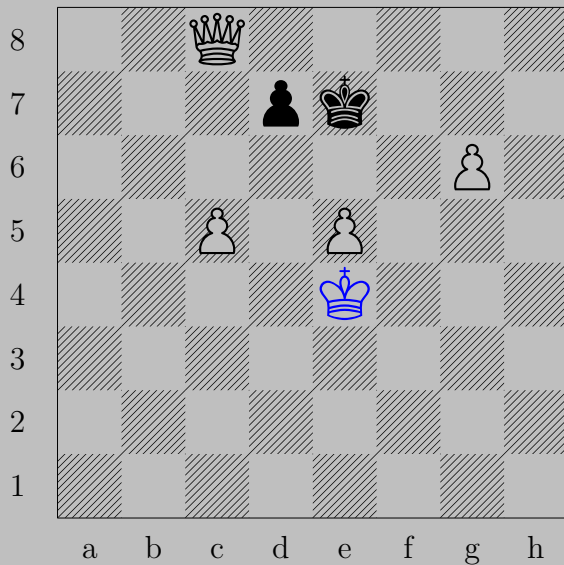
Otherwise, ♚h2.

1881



E. Hällström, 1903

1881

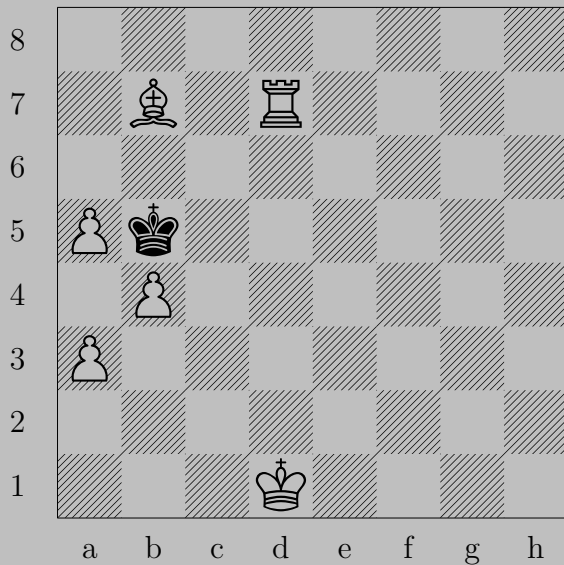


♔e4

If ♔e6, ♑e8

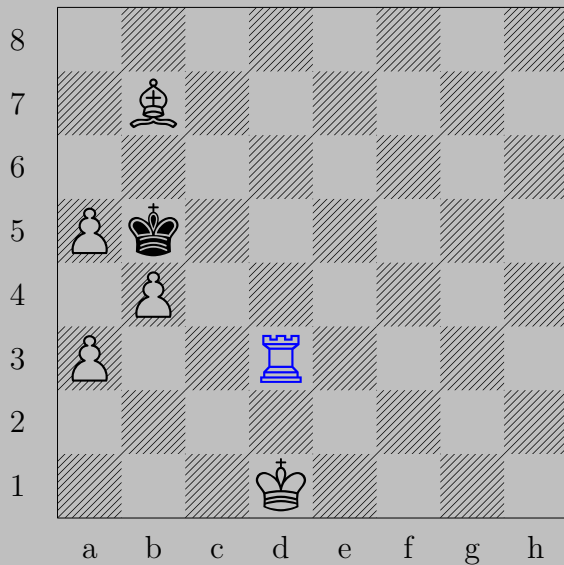
If ♖d6, ♖(c5)×d6.

1882



J. Hannelius, 1982

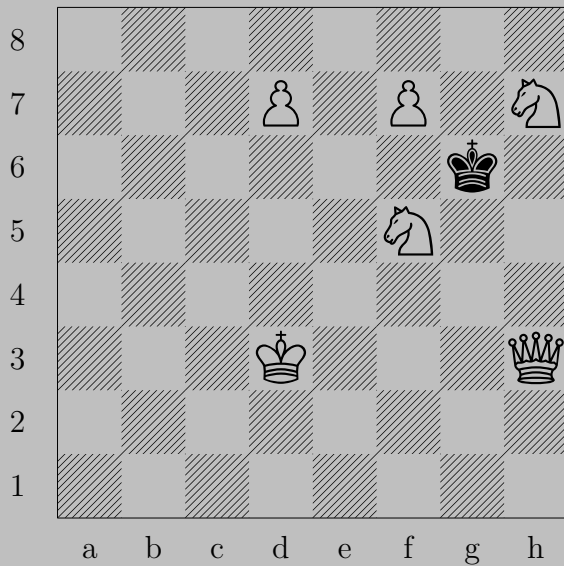
1882



♖d3

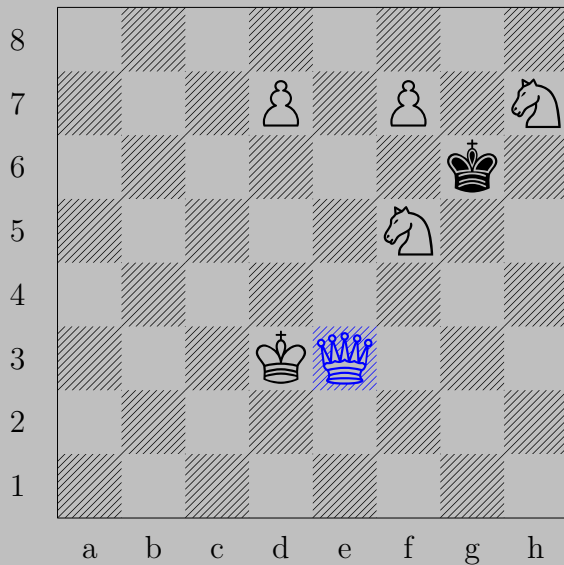
If ♔a4, ♕c6. If ♔c4, ♕a6.

1883



J. Hannelius, 1982

1883



♔e3

If ♔xf5, ♕e4. If ♔xf7, ♕e8. If ♔xh7, ♕h6. If ♔h5, ♕g5.



1884



J. Hannelius, 1978

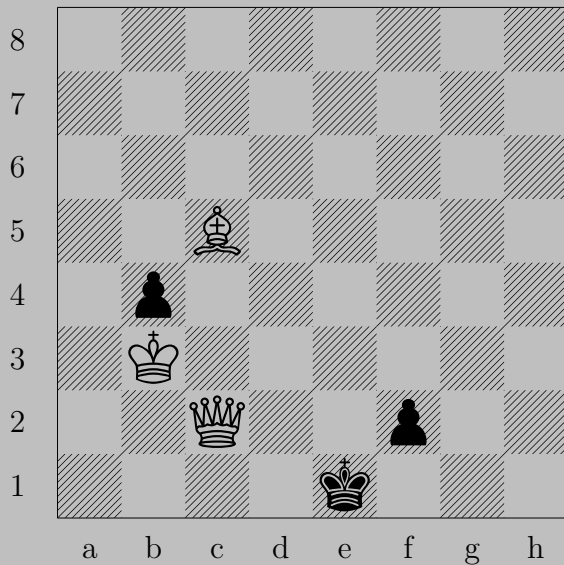


♙g5

If ♘f6 or ♖f6, ♙d5. If ♘f5, ♙e7.

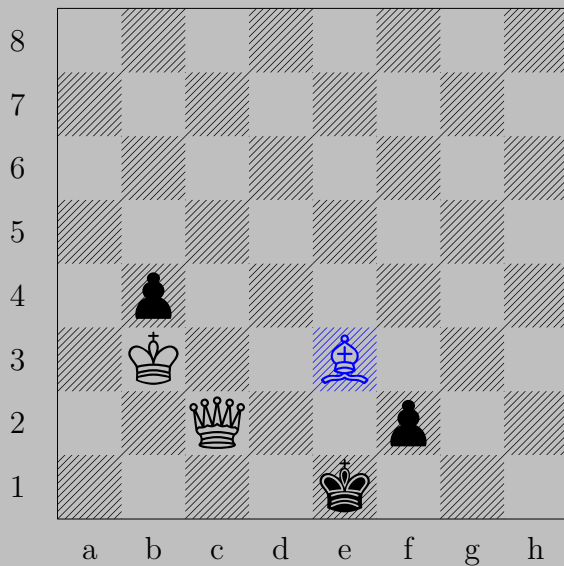
Otherwise, ♖d8.

1885



J. Hannelius, 1981

1885

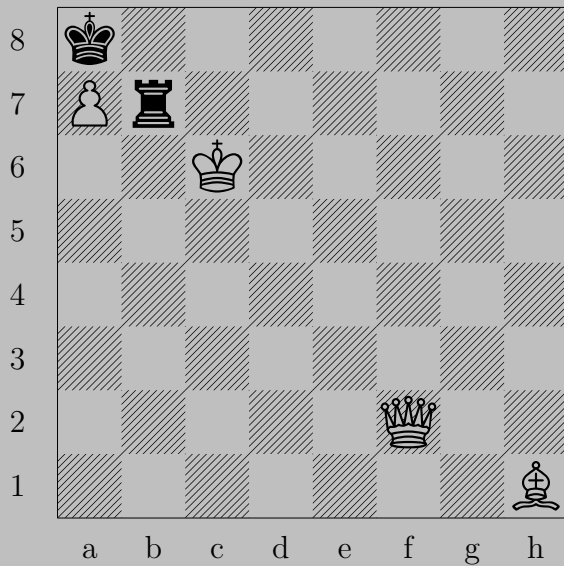


♙e3

If ♔f1, ♚×f2. If ♖f1(♘), ♙f2.

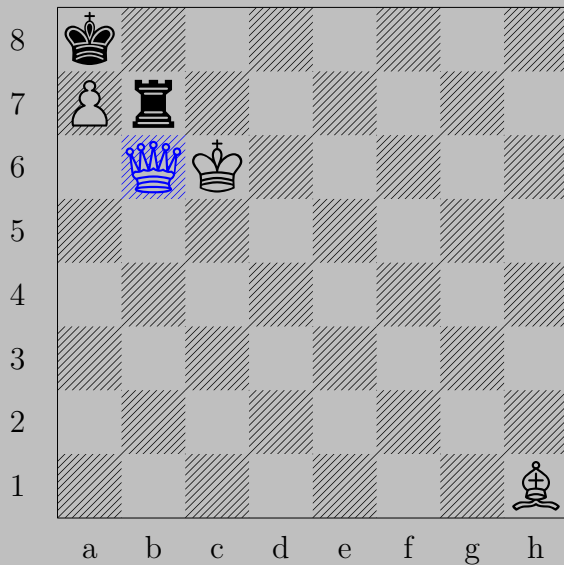
Otherwise, ♚d2.

1886



J. Hannelius, 1974

1886

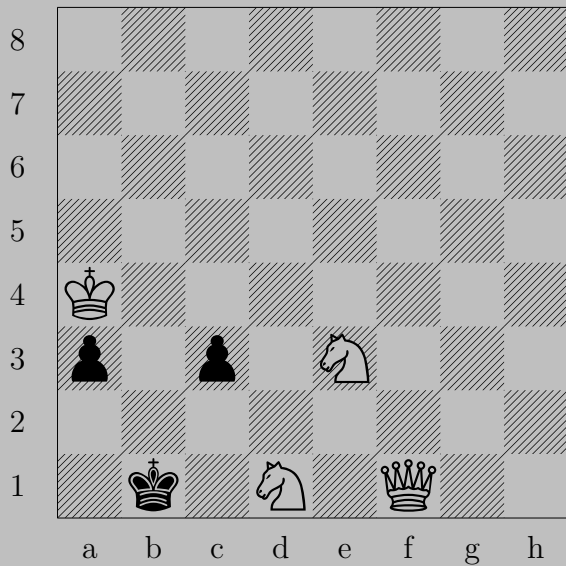


♙b6

If ♖x b6+, ♙x b6. If ♖c7+, ♙xc7.

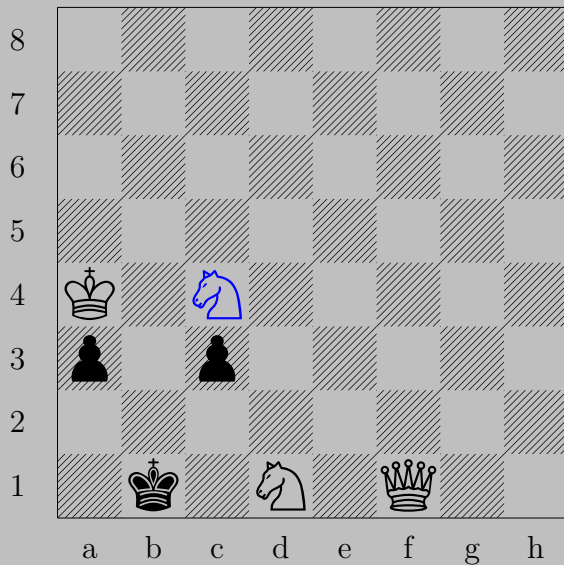
If ♖b8, ♙x b8. Otherwise, ♙b8.

1887



J. Hannelius, 1957

1887



$\text{Nc4}$

If  $\text{Ba2}$  or  $\text{Bc1}$  or  $\text{Bc2}$ ,  $\text{N(d1) e3}$ . If  $\text{Bc2}$ ,  $\text{Nc3}$ . If  $\text{Ba1}$  or  $\text{Ba2}$ ,  $\text{Nxc3}$ .



1888



J. Hannelius, 1971

1888

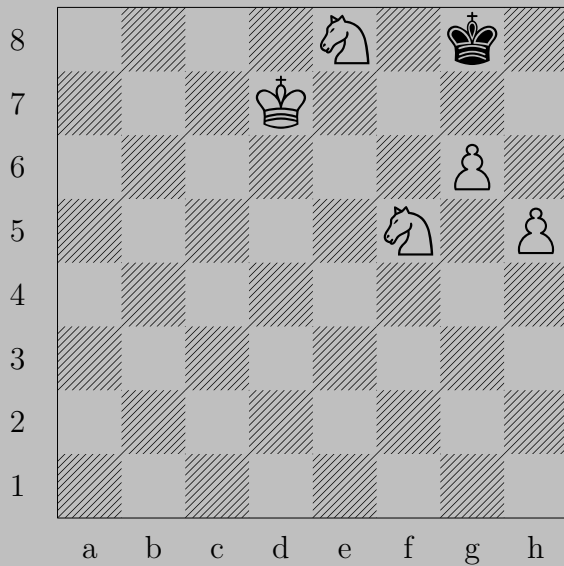


$\text{♖g5}$

If  $\text{♕f4}$  or  $\text{♞d5}$ ,  $\text{♖g4}$ .

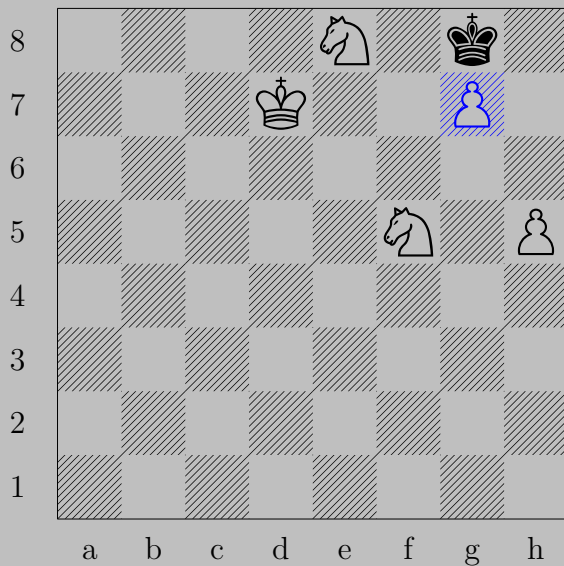
Otherwise,  $\text{♜b7}$ .

1889



J. Hannelius, 1945

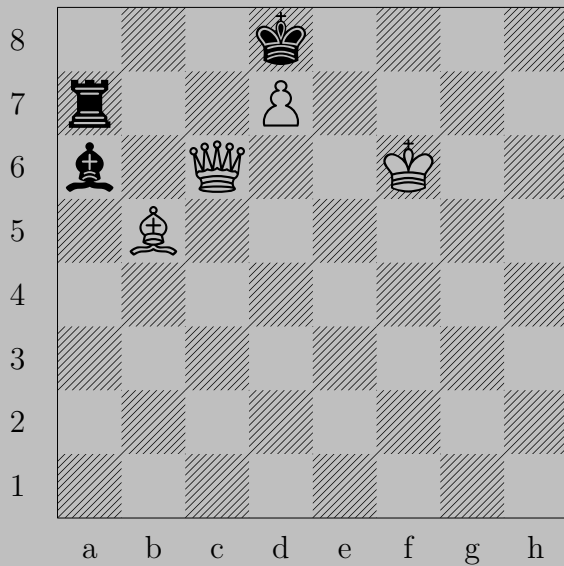
1889



$\triangleleft$ g7

If  $\triangleleft$ f7,  $\triangleleft$ h6. If  $\triangleleft$ h7,  $\triangleleft$ f6.

1890



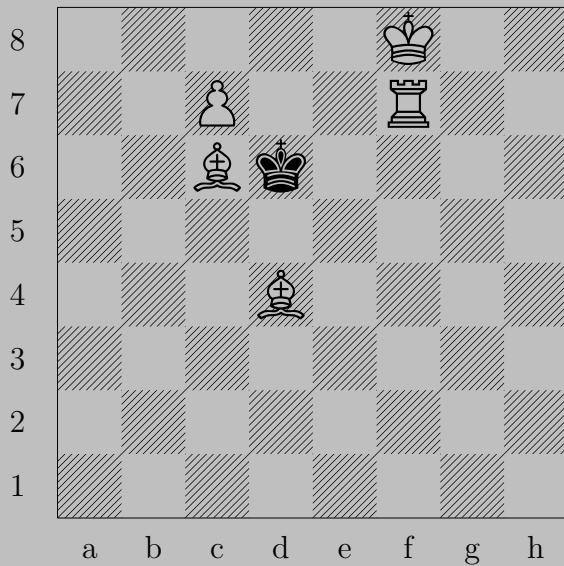
K. Hannemann, 1924



♔f7

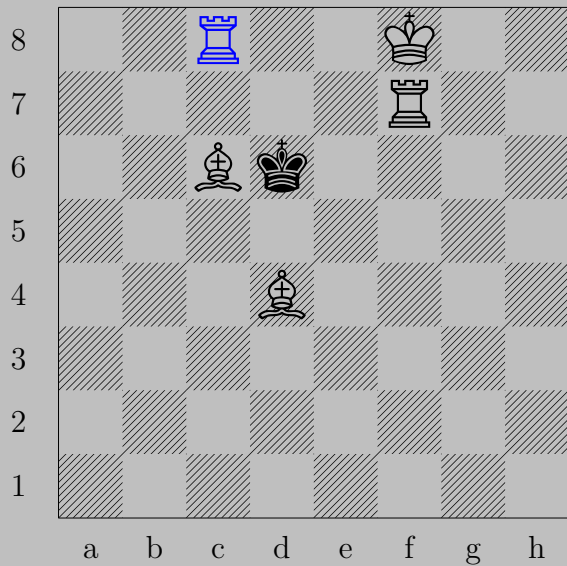
If ♖xd7+, ♕xd7. If ♖c7, ♕f6. If ♖b7 or ♘xb5, ♕c8. If ♖a8 or ♘b7, ♕b6.  
 If ♘c8, ♕xc8.

1891



K. Hannemann, 1932

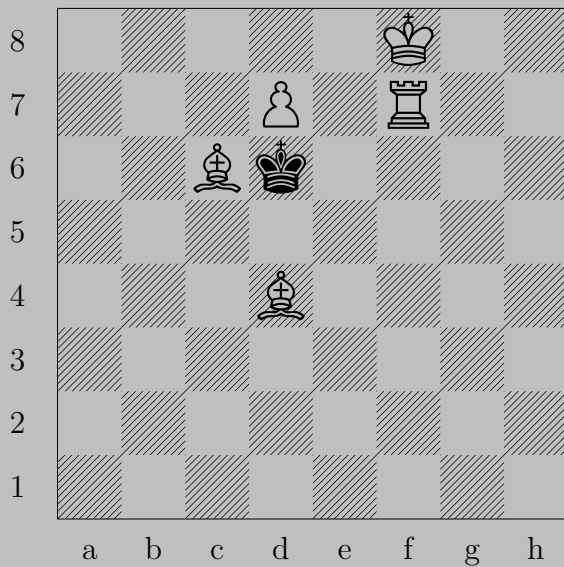
1891



$\text{♖c8}(\text{♖}), \text{♔e6}$   
 $\text{♖f6}$



1892



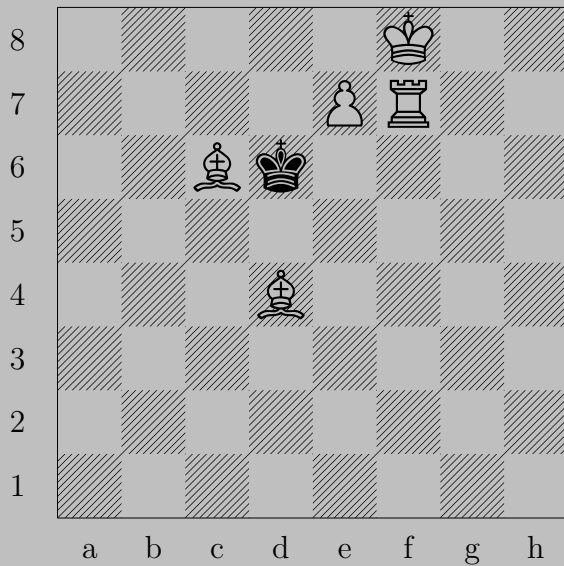
K. Hannemann, 1932

1892



$\text{♗d8}(\text{♔})+, \text{♔xc6}$  or  $\text{♔e6}$   
 $\text{♔d7}$

1893



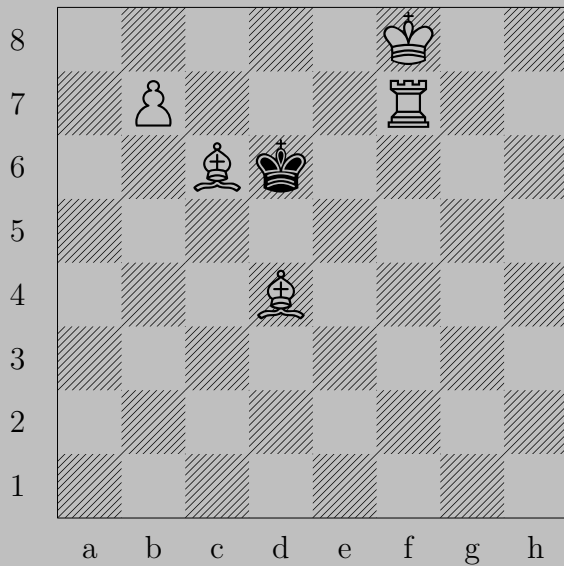
K. Hannemann, 1932

1893



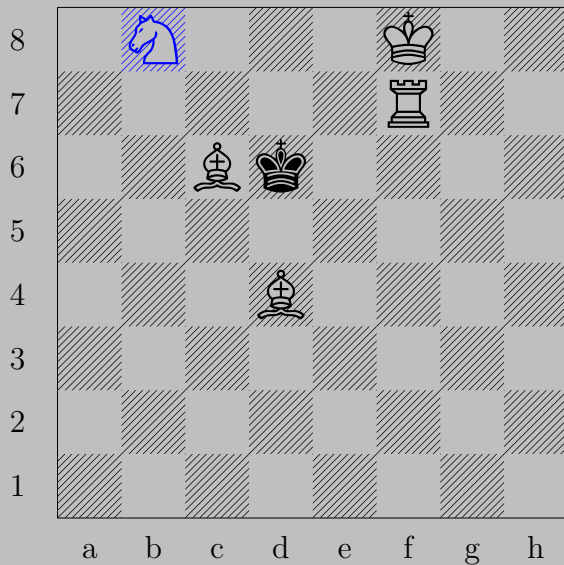
$\text{♗e8}$ (♗),  $\text{♔e6}$   
 $\text{♖f6}$

1894



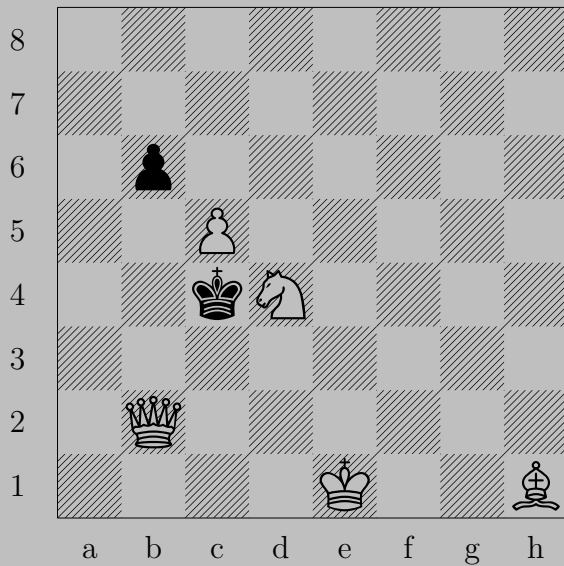
K. Hannemann, 1932

1894



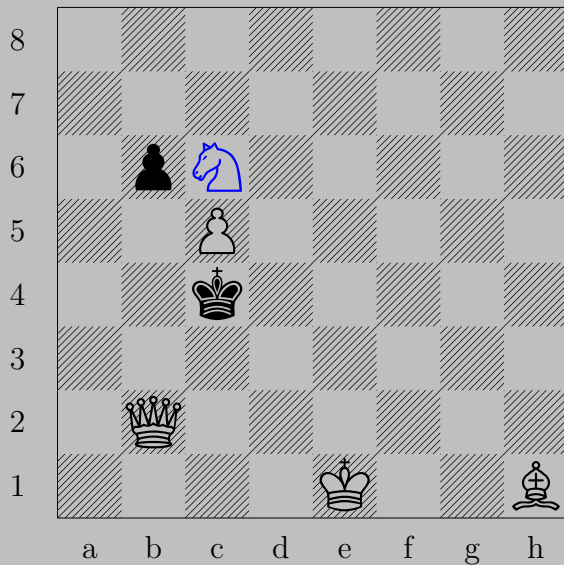
$\text{♞b8}(\text{♞}), \text{♔e6}$   
 $\text{♖f6}$

1895



K. Harczy, 1926

1895

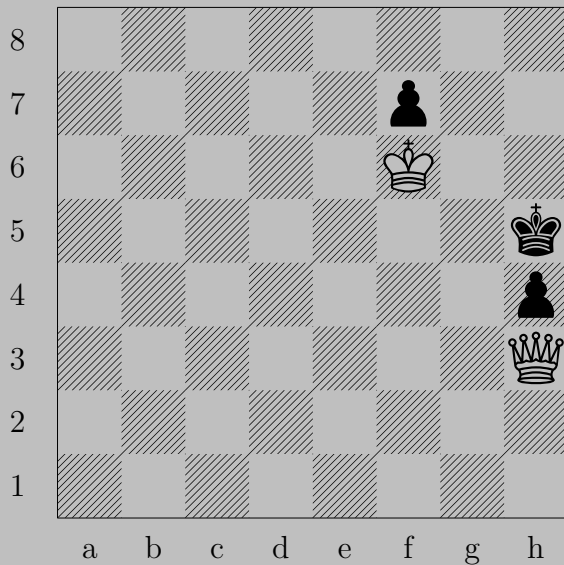


$\text{Nc6}$

If  $\text{Pxc5}$ ,  $\text{Ne5}$ . If  $\text{Pb5}$ ,  $\text{Qc2}$ . If  $\text{Kxc5}$ ,  $\text{Qb4}$ . If  $\text{Kd3}$ ,  $\text{Qb3}$ .

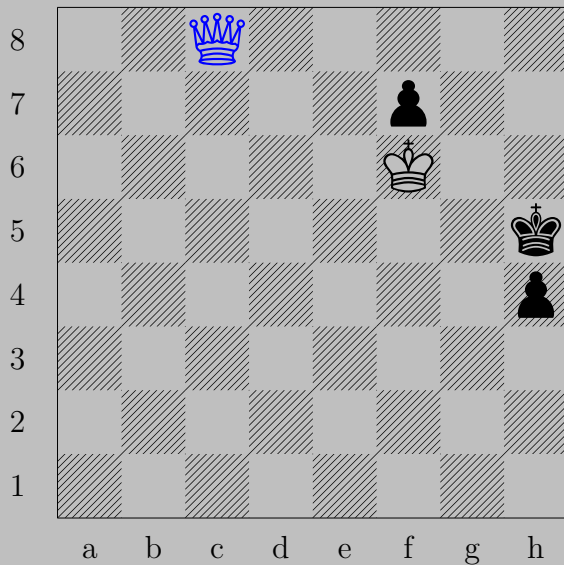


1896



B. Harley - C. G. Whatney, 1921

1896



♙c8

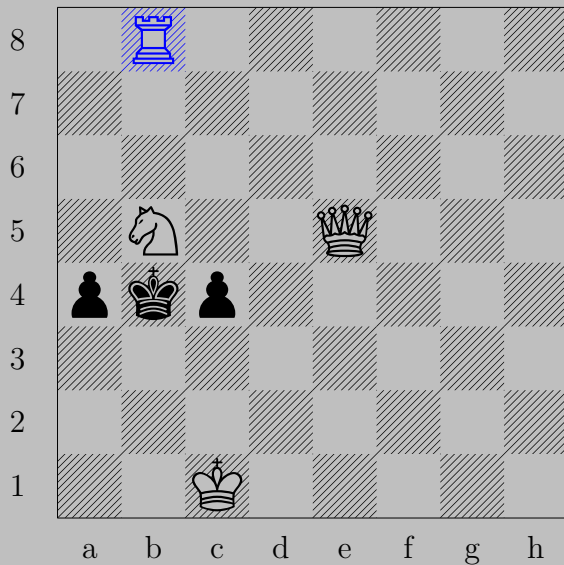
If ♖h3, ♙xh3. If ♔h6, ♙h8.

1897



J. Haring, 1965

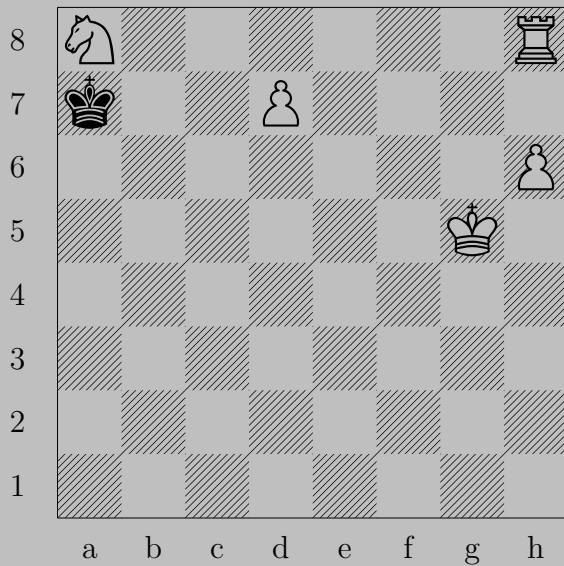
1897



$\text{Rb8}$

If  $\text{Pa3}$ ,  $\text{Nc3}$ . If  $\text{Pc3}$ ,  $\text{Qxc3}$ . If  $\text{Ka5}$ ,  $\text{Nc7}$ . If  $\text{Kb3}$ ,  $\text{Qb2}$ .

1898



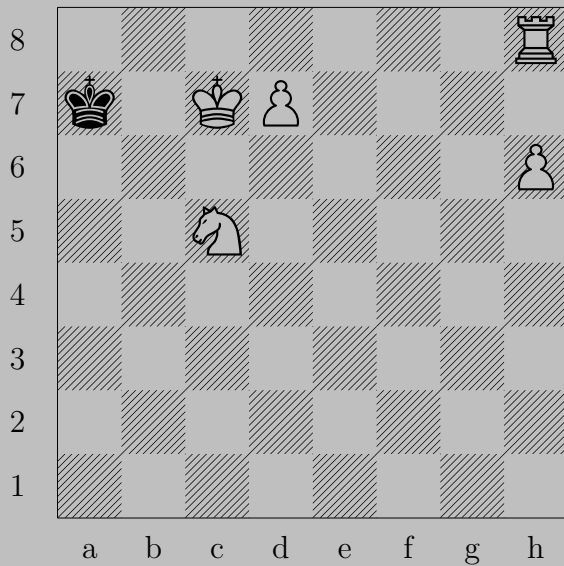
J. Haring, 1968

1898



$\text{♔d8}(\text{♔}), \text{♖a6}$  or  $\text{♗b7}$   
 $\text{♕b6}$

1899



J. Haring, 1968

1899



$\text{♔d8}(\text{♞}), \text{♚a8}$   
 $\text{♞c6}$



1900



J. Haring, 1968

1900



$\text{♖d8}(\text{♖}), \text{♚e7}$   
 $\text{♜d7}$