

Chess Puzzles

2201-2300

Mate in Two

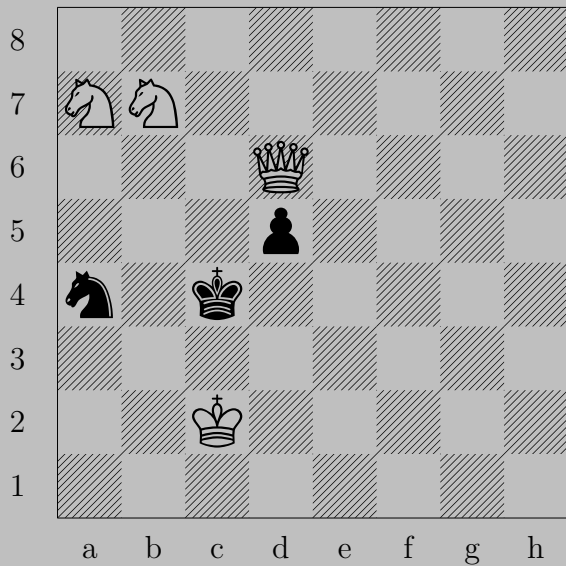
White to Move

László Polgár

Links

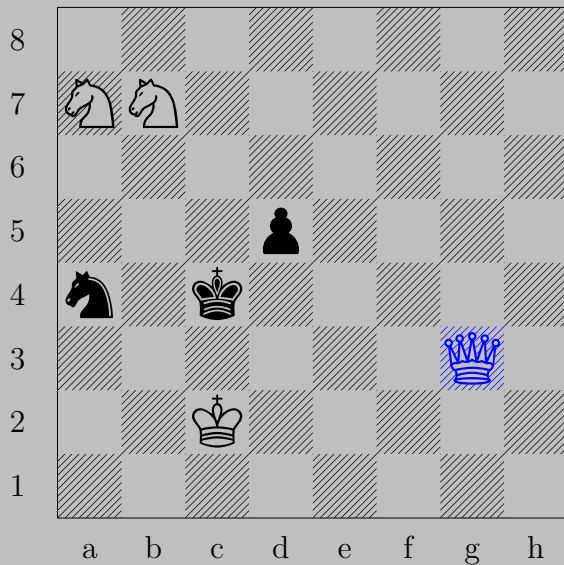
2201	2202	2203	2204	2205	2206	2207	2208	2209	2210
2211	2212	2213	2214	2215	2216	2217	2218	2219	2220
2221	2222	2223	2224	2225	2226	2227	2228	2229	2230
2231	2232	2233	2234	2235	2236	2237	2238	2239	2240
2241	2242	2243	2244	2245	2246	2247	2248	2249	2250
2251	2252	2253	2254	2255	2256	2257	2258	2259	2260
2261	2262	2263	2264	2265	2266	2267	2268	2269	2270
2271	2272	2273	2274	2275	2276	2277	2278	2279	2280
2281	2282	2283	2284	2285	2286	2287	2288	2289	2290
2291	2292	2293	2294	2295	2296	2297	2298	2299	2300

2201



R. T. Lewis, 1993

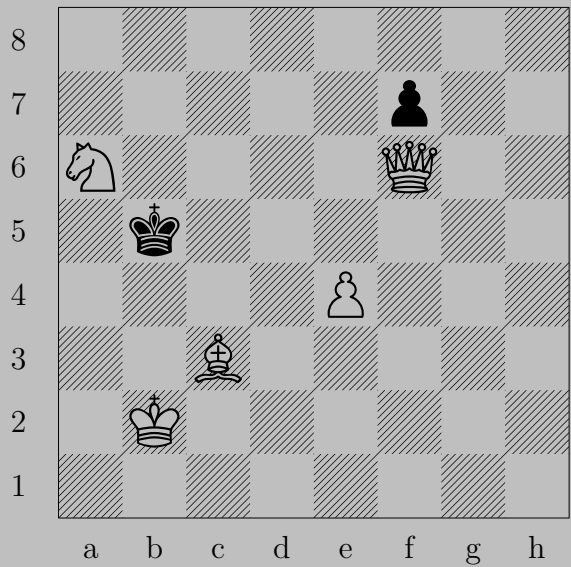
2201



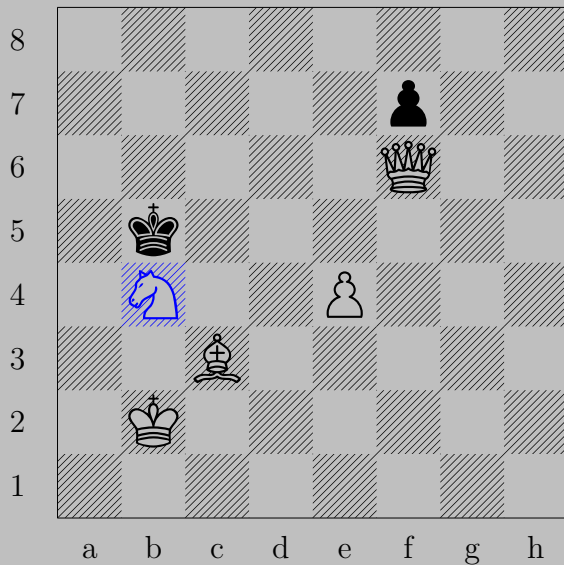
♔g3

If ♘d4 or ♙b4, ♚b3. If ♙d4, ♚f4.

Otherwise, ♚c3.



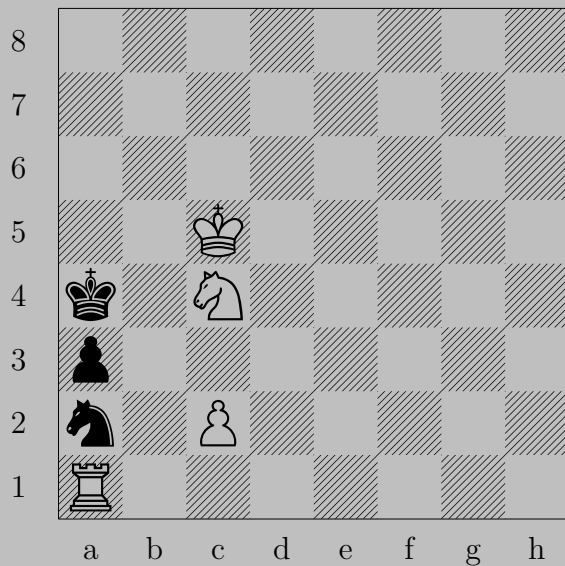
2202



♞b4

If ♔a4 or ♔a5 , ♚a6 . If ♔c4 or ♔c5 , ♚c6 .

2203



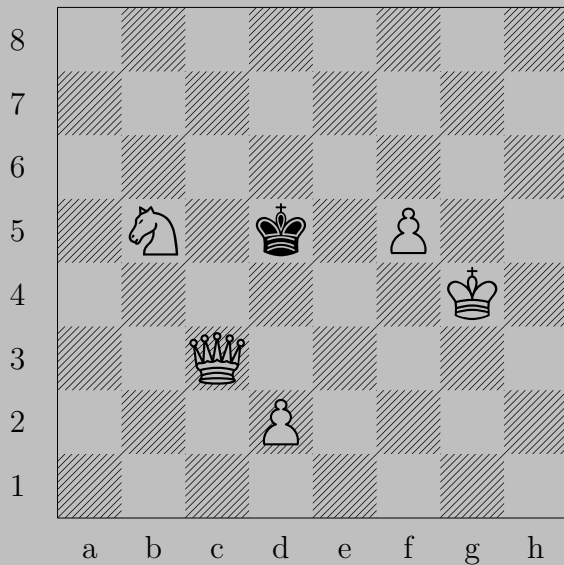
R. T. Lewis, 1990

2203

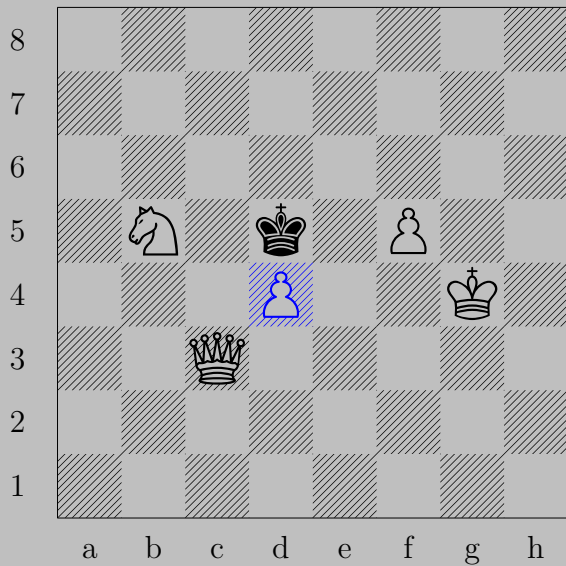


Rb1

If Nb4 , RxNb4 . If Nc1 or Nc3 , Rb4 .

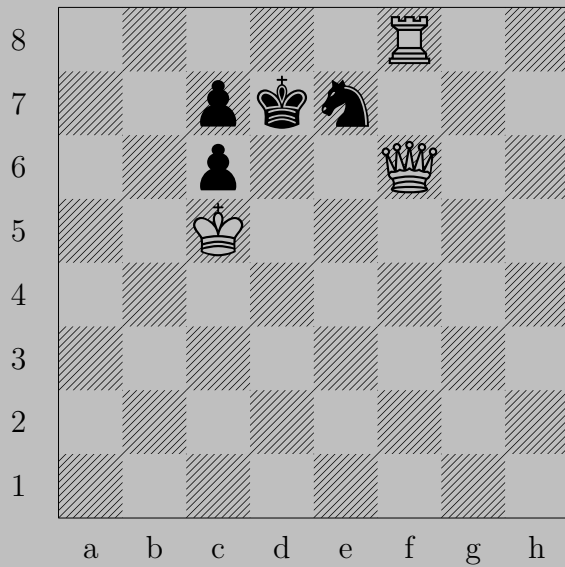


2204



♖d4, ♔e4
♑f3

2205



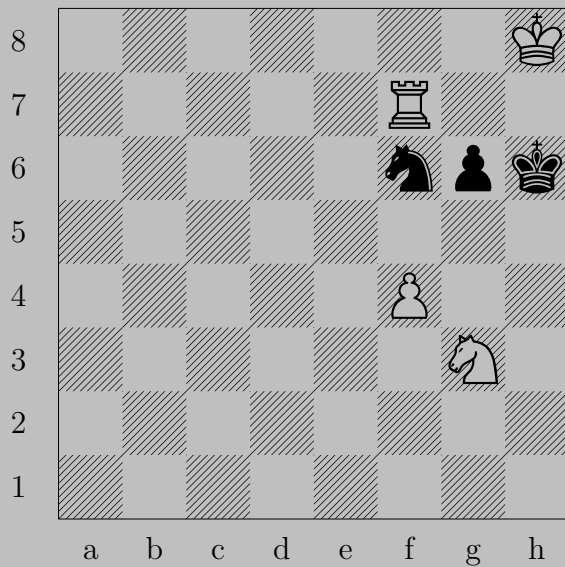
R. T. Lewis, 1990

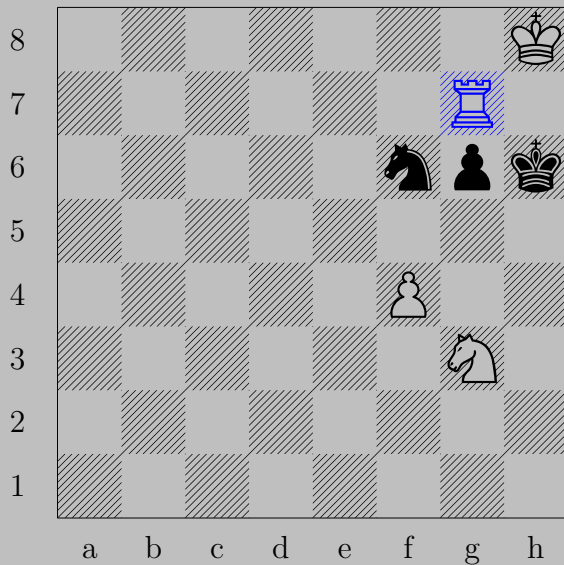
2205



♔e5, anything

♔e8





Rg7

If Pg5 , Pxg5 .

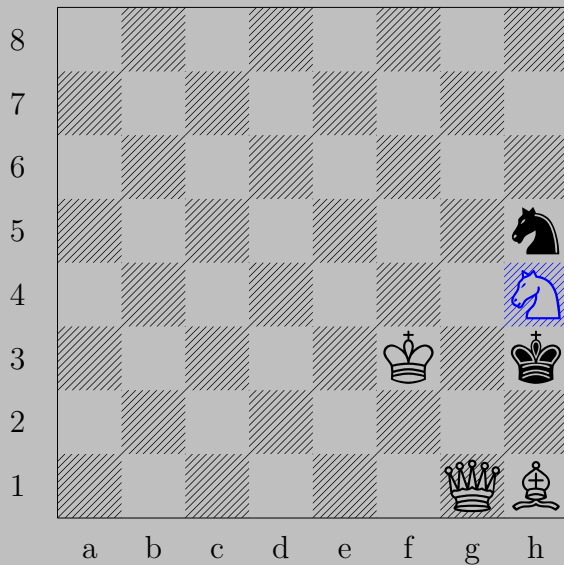
If Kh7 , Rxh7 . Otherwise, Rh7 .

2207



R. T. Lewis, 1985

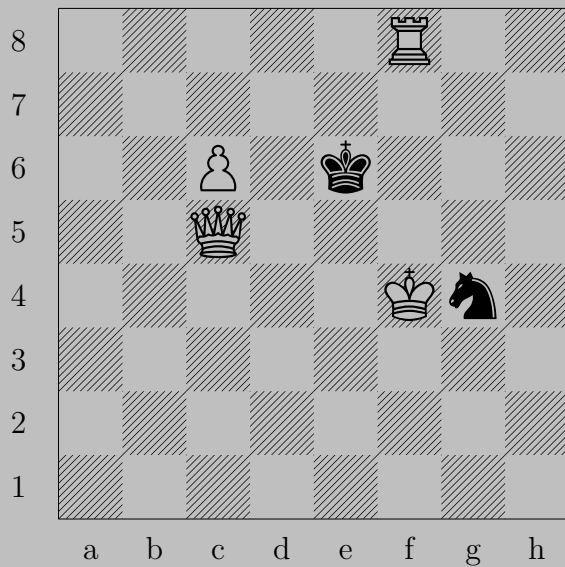
2207



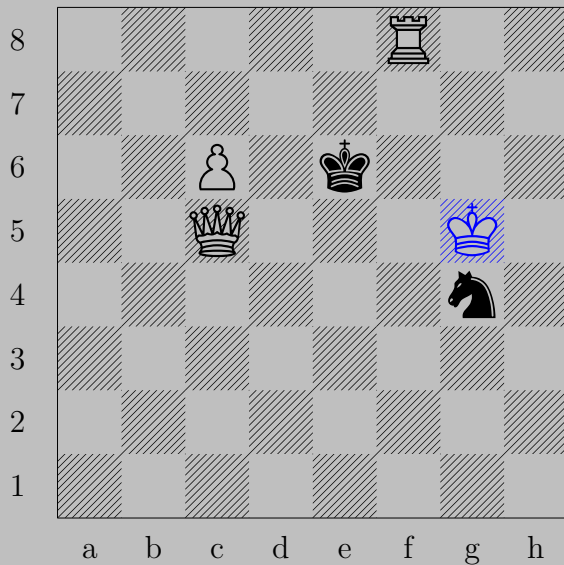
$\text{♞} \times h4$

If $\text{♔} \times h4$, $\text{♚} \times g4$.

If $\text{♞} \times g3$, $\text{♚} \times g3$. Otherwise $\text{♚} \times g3$.

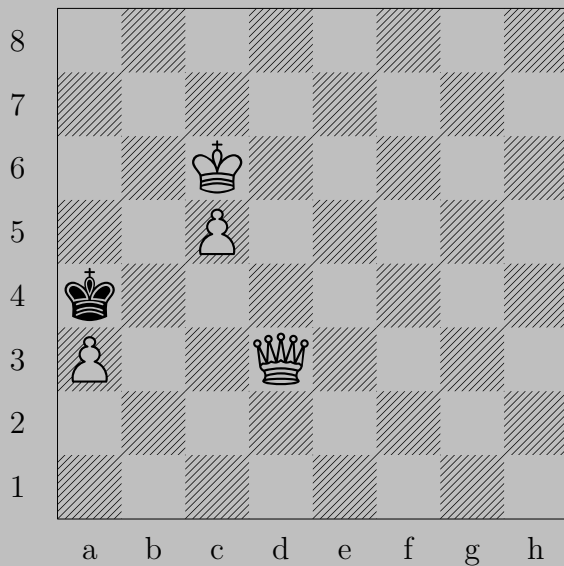


2208



♔g5

If ♘f6, ♖xf6. Otherwise, ♖f6.



2209



♔b7, ♔a5

♔a6

2210



R. T. Lewis, 1985

2210

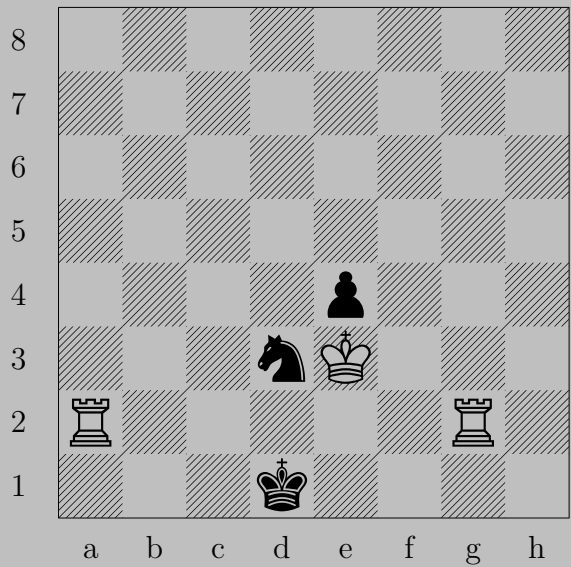


♙f3

If ♘g5-d8, ♙×g3.

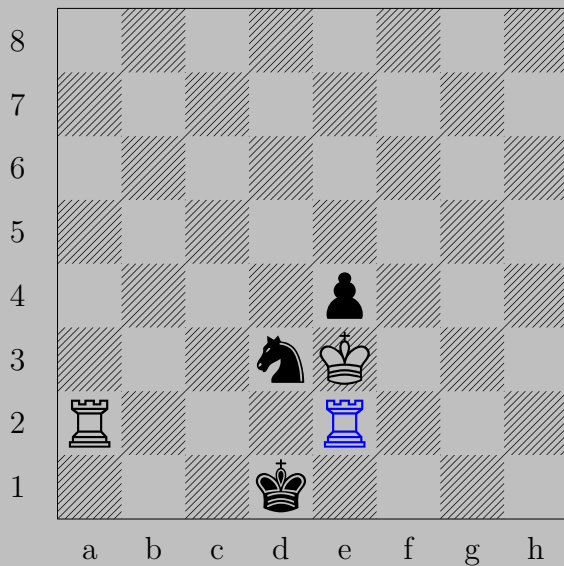
If ♘f5, ♙×f5. Otherwise ♙f5.

2211



R. T. Lewis, 1985

2211

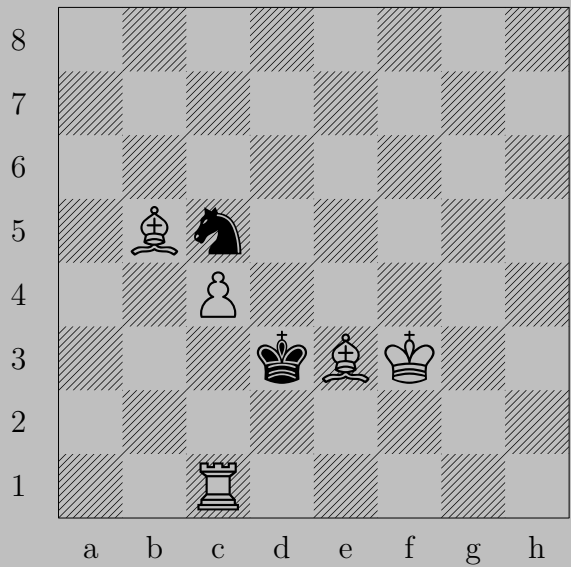


$\text{R}(g2)e2$

If $\text{N}(c1), \text{R}(a2)d2$.

Otherwise, $\text{R}a1$.

2212



R. T. Lewis, 1986

2212



♖c6

If ♜e4, ♖xe4. Otherwise, ♖e4.

2213



R. T. Lewis, 1986

2213

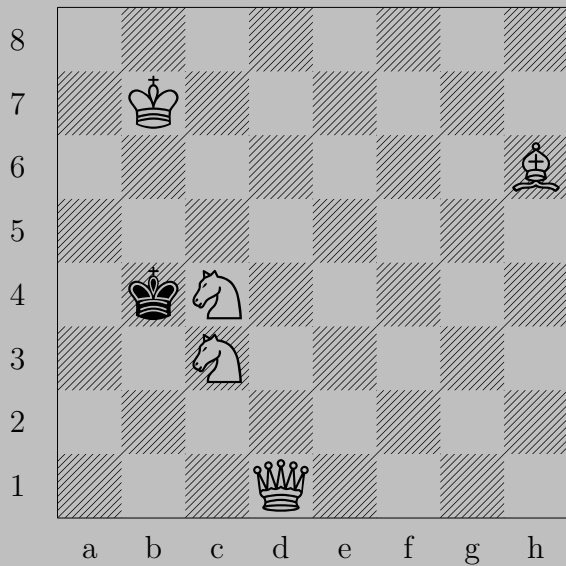


♔g6

If ♚xa2, ♚c1. If ♚b2, ♚xb2. If ♚c3, ♞xc3.

Otherwise, ♚c2.

2214



S. Liljestrund, 1957

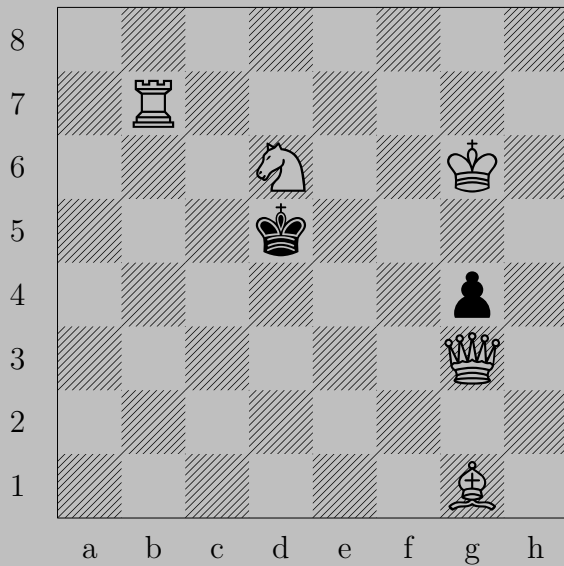
2214



♞a5

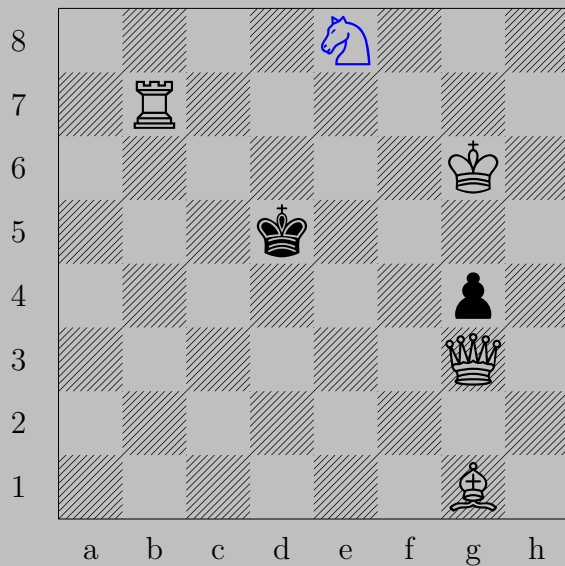
If ♞xa5 , ♚a4 . If ♞xc3 , ♚d2 . If ♞a3 , ♚b3 . If ♞c5 , ♜f8 .

2215



S. Liljestrund, 1962

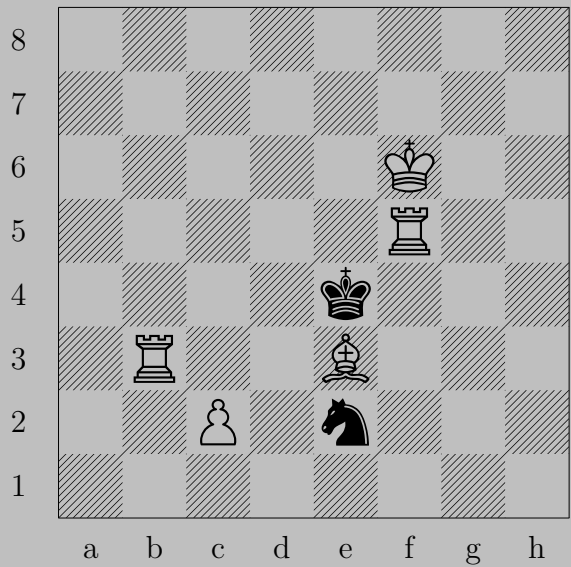
2215



♘e8

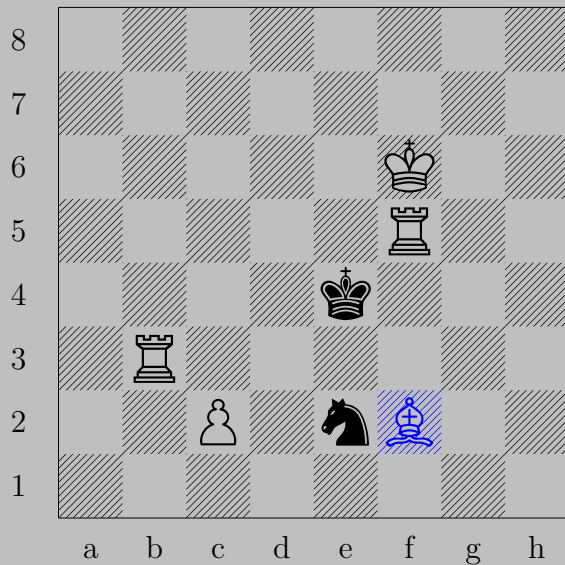
If ♔c4, ♚b3. If ♔c6, ♚g2. If ♔e4, ♘f6. If ♔e6, ♚d6.

2216



R. Lincoln, 1988

2216

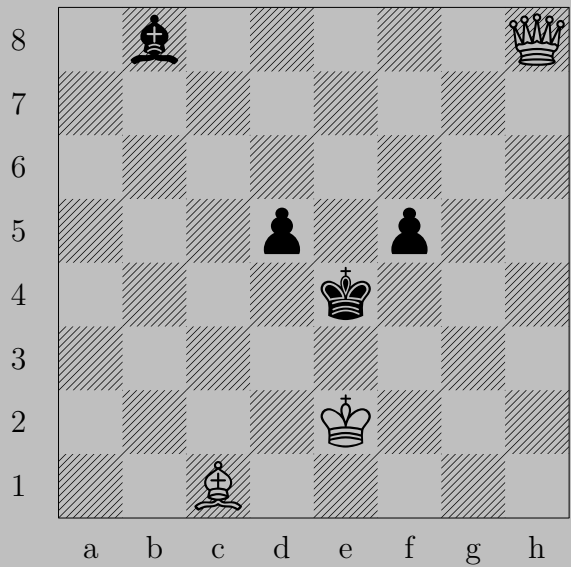


♙f2

If ♞d4 , ♜e3 . If ♞f4 , ♜e5 .

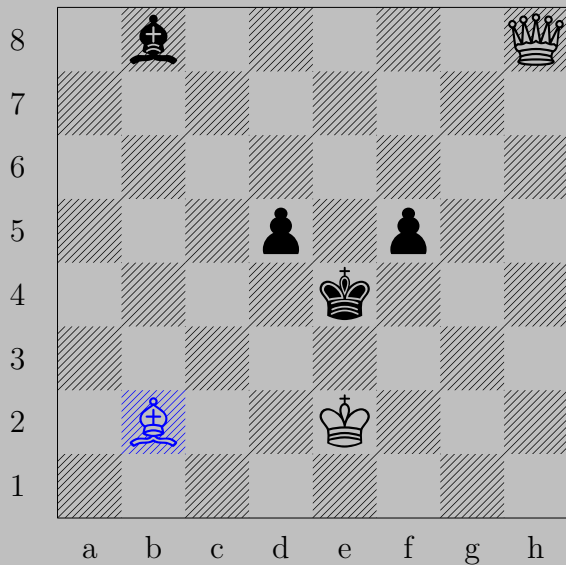
Otherwise, ♜b4 .

2217



R. Lincoln, 1992

2217

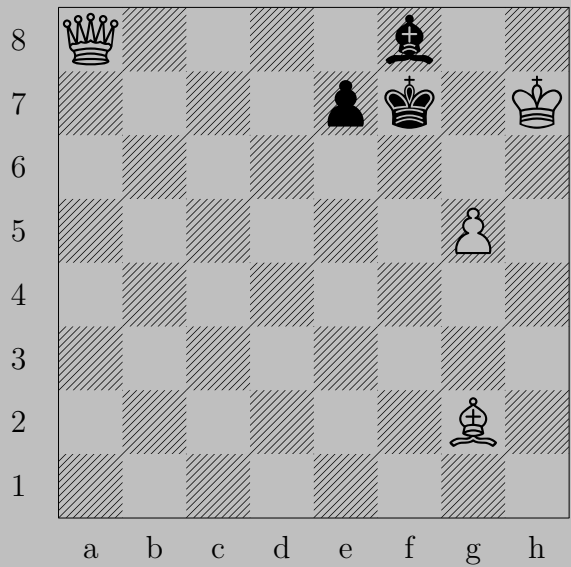


♙b2

If ♙a7 , ♚e5 . If ♙e5 , $\text{♚}\times\text{e5}$. If ♜f4 , ♚h7 .

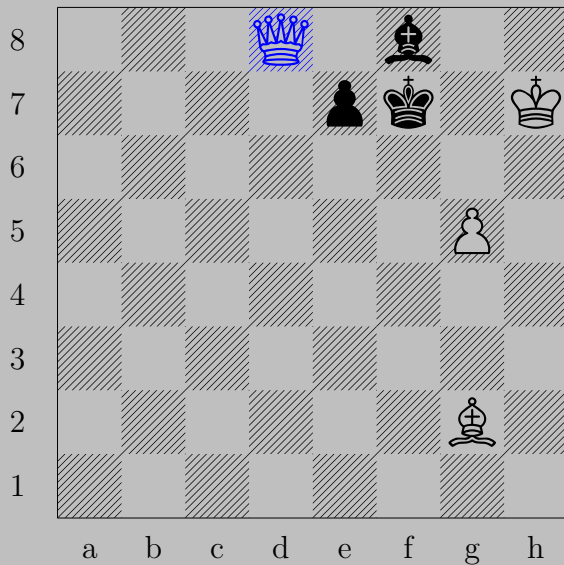
If ♜d4 , $\text{♚}\times\text{d4}$. Otherwise, ♚d4 .

2218



R. Lincoln, 1989

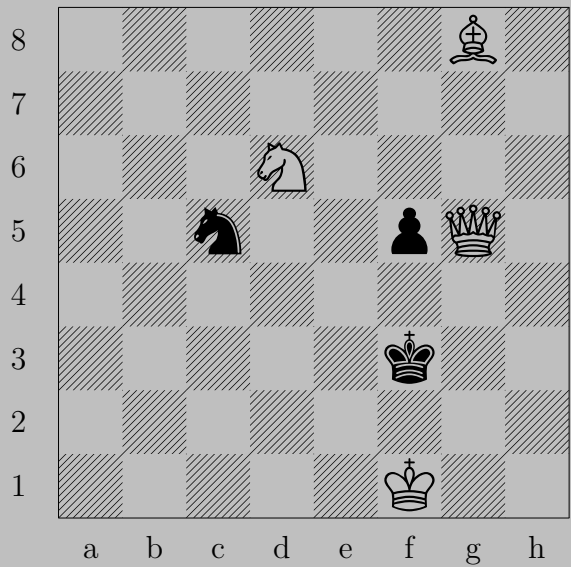
2218



♔d8

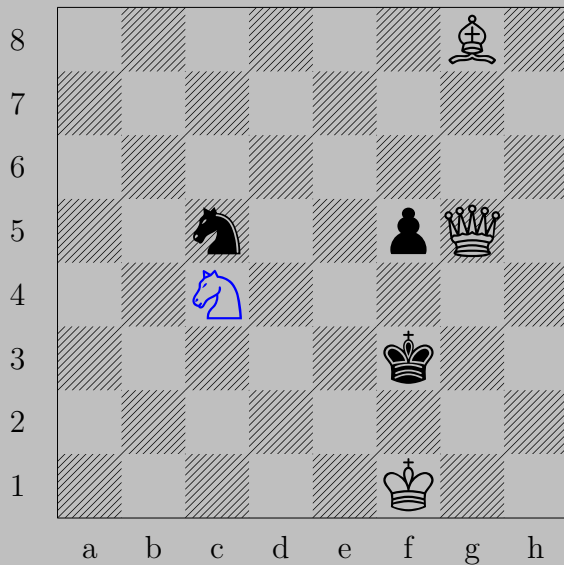
If ♕e6 , ♔d5 . If ♖e6 or ♖e7 , ♔d7 . If ♘g7 or ♘h6 , ♔g8 .

2219



R. Lincoln, 1993

2219

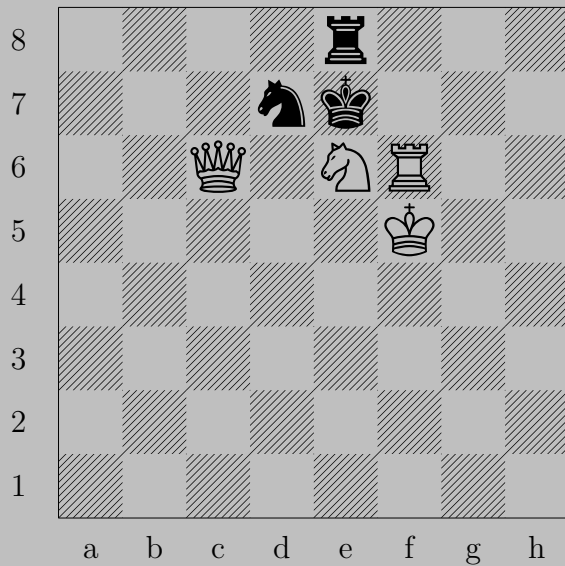


Nc4

If Ke4 , Qe3 . If Bf4 , Qg2 . If Ne4 , Ne5 .

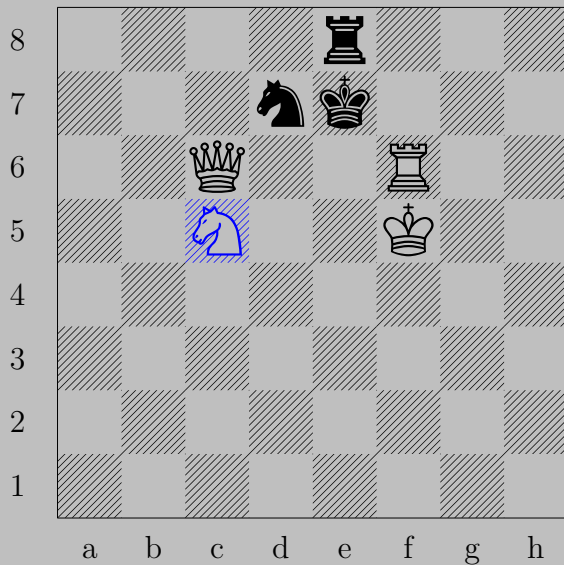
Otherwise, Bd5 .

2220



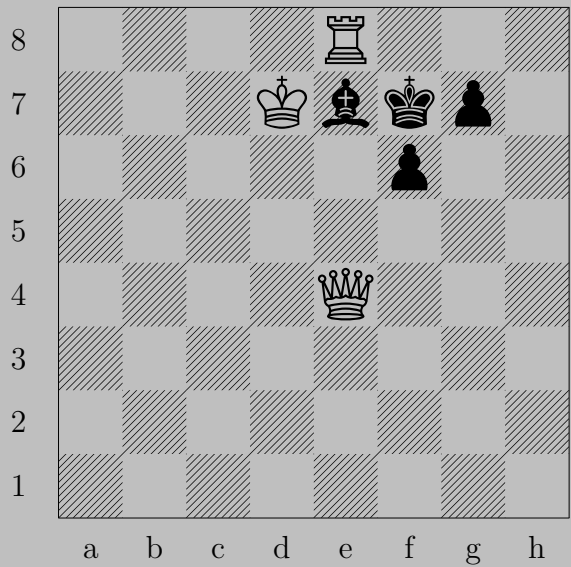
R. Lincoln, 1993

2220



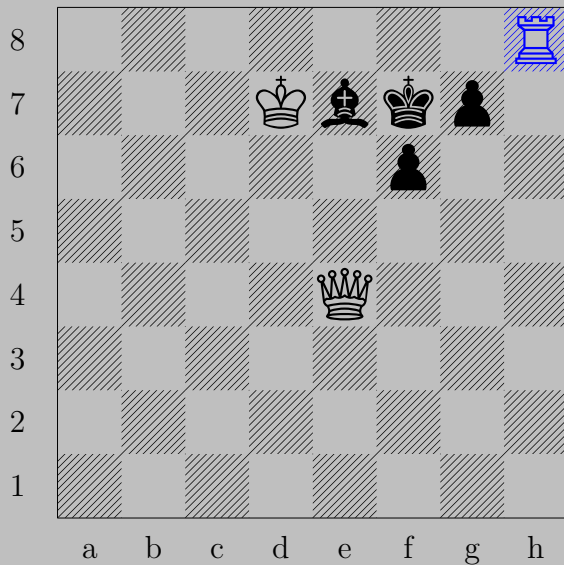
♞c5
 If ♜d8 , ♚e6 . If ♞x f6 , ♚x f6 . If ♞b8 or ♞b6 or ♞xc5 or ♞e5 or ♞f8 , ♚d6 .
 Otherwise, ♚xd7 .

2221



R. Lincoln, 1990

2221

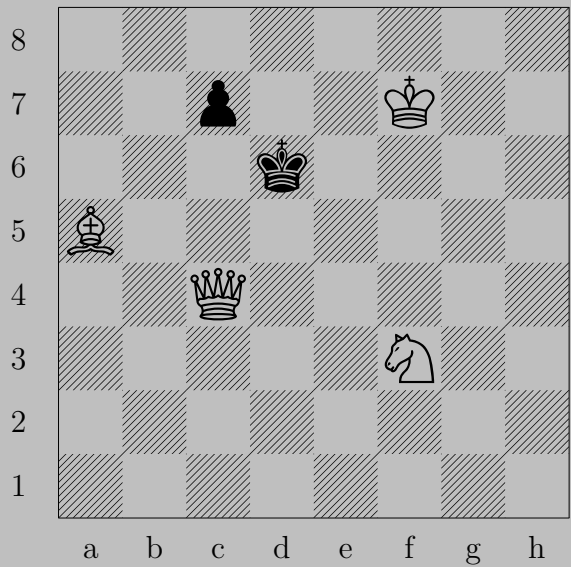


$\text{R}h8$

If $\Delta f5$, $\text{Q}e6$. If $\Delta g6$, $\text{Q}xe7$. If $\Delta g5$, $\text{Q}h7$.

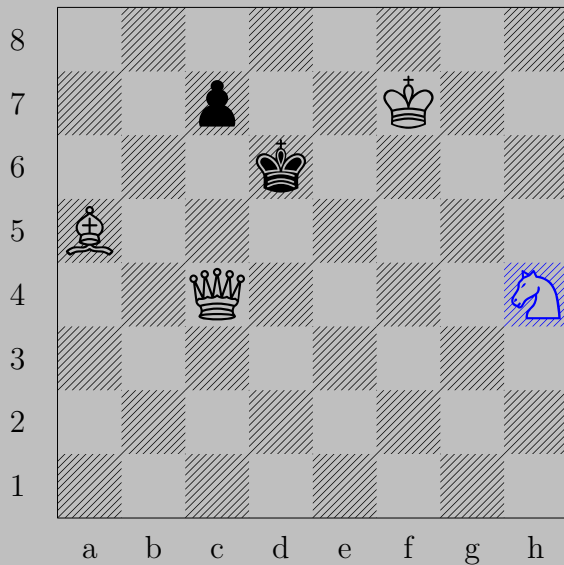
Otherwise, $\text{Q}e8$.

2222



R. Lincoln, 1990

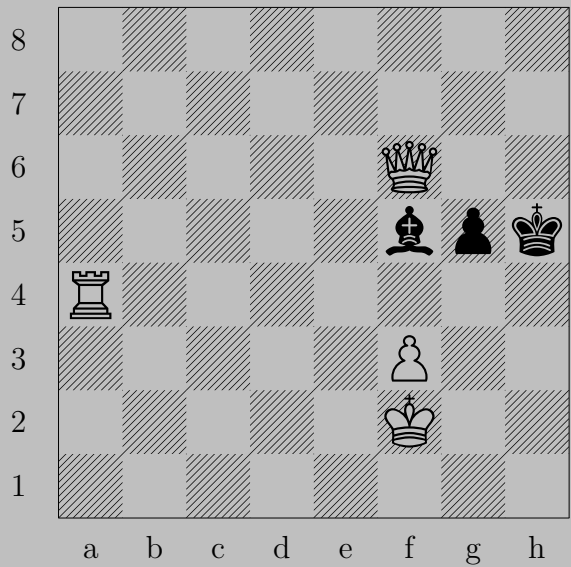
2222



$\text{N}h4$

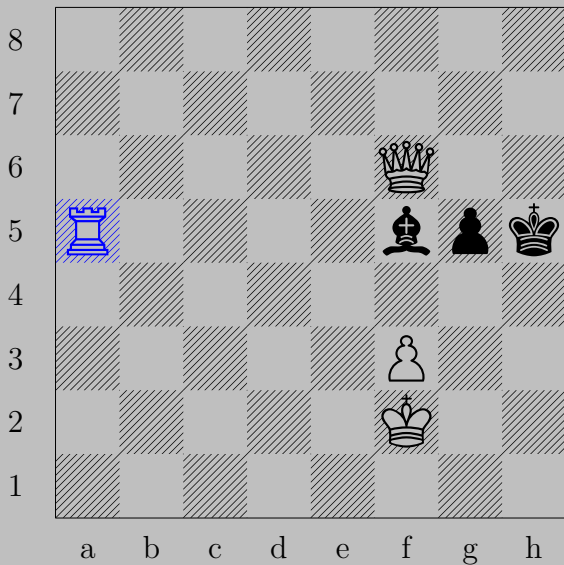
If $\text{P}c6$, $\text{Q}d4$. If $\text{P}c5$, $\text{Q}e6$. If $\text{K}e5$, $\text{Q}x d7$. If $\text{K}d7$, $\text{Q}x d7$.

2223



R. Lincoln, 1993

2223

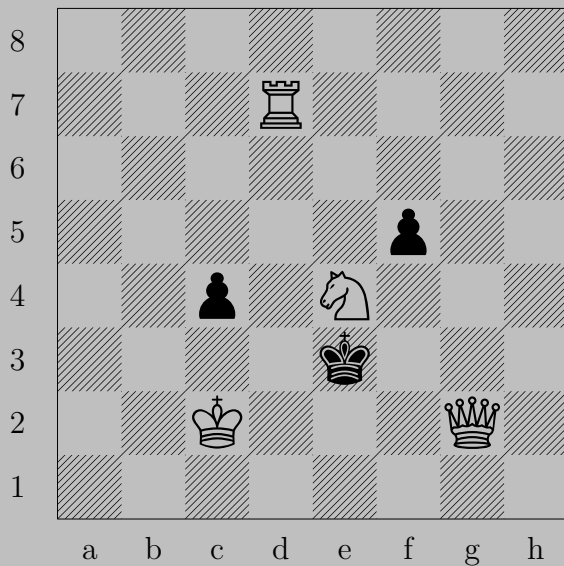


$\text{R}a5$

If $\text{K}h4$, $\text{Q}h6$. If $\text{P}g4$, $\text{R}xf5$.

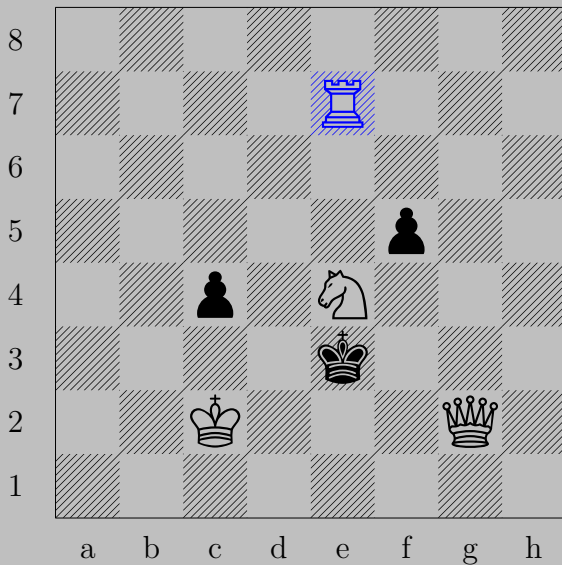
Otherwise, $\text{Q}xg5$.

2224



R. Lincoln, 1993

2224



$\text{R}e7$

If $\text{P}xe4$, $\text{R}xe4$. If $\text{K}d4$, $\text{Q}d2$. If $\text{K}f4$, $\text{Q}g3$. If $\text{P}c3$ or $\text{P}f4$, $\text{Q}f2$.

2225



R. Lincoln, 1993

2225

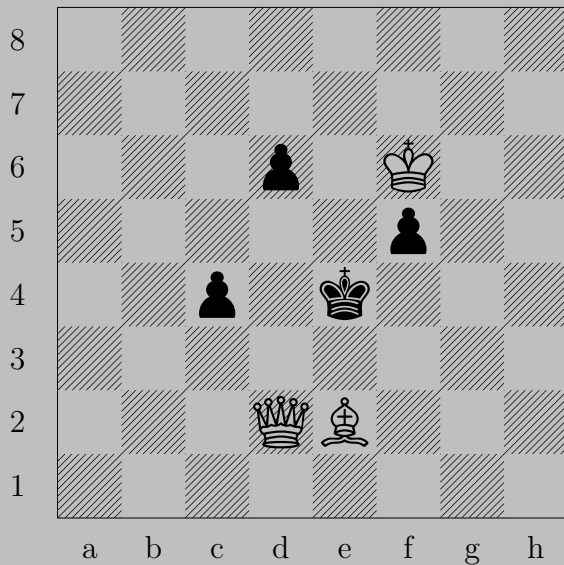


♙b1

If ♘g5, ♖h4. If ♘g6, ♙xg6. If ♙d5, ♙xh7.

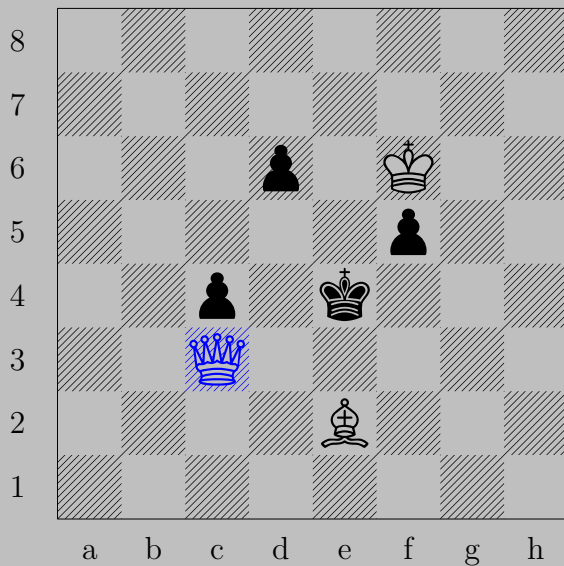
Otherwise, ♙h1.

2226



R. Lincoln, 1993

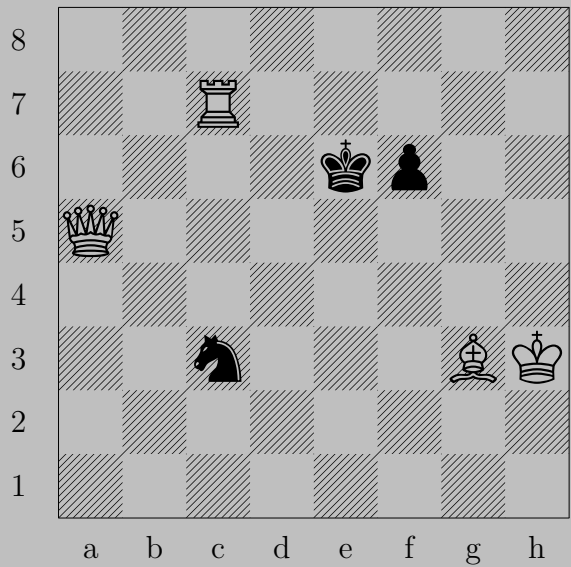
2226



♙c3

If ♖f4, ♕f3. If ♖d5, ♙e5. If ♙f4, ♙f3. If ♙d5, ♙xc4.

2227



R. Lincoln, 1992

2227

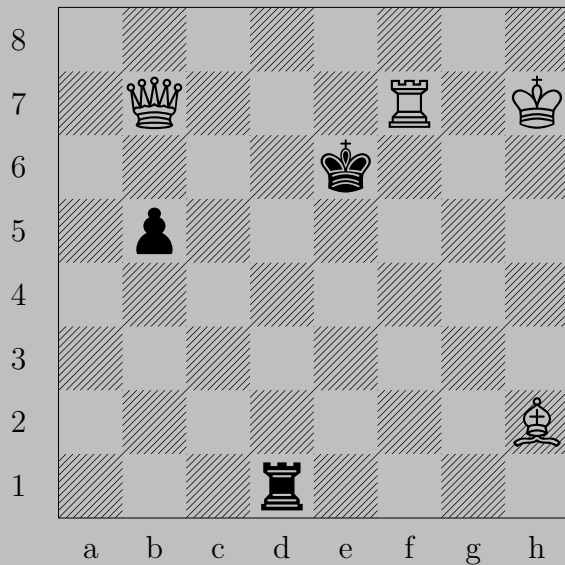


♙b4

If ♔d5, ♚c4. If ♔f5, ♚g4. If ♖f5, ♚d6.

If ♘e4, ♚xe4. Otherwise, ♚e4.

2228



R. Lincoln, 1989

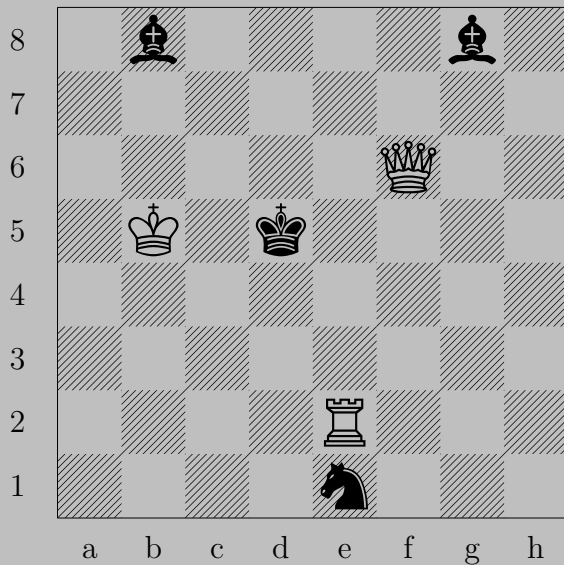


♙f3

If ♖f1, ♙b3. If ♖d5, ♙f6.

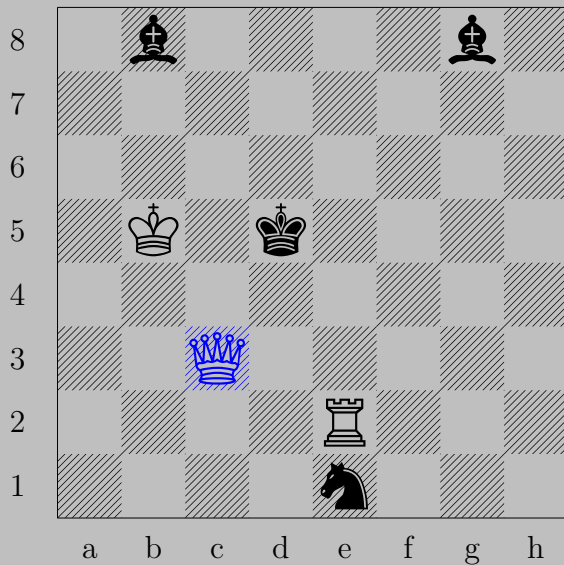
Otherwise, ♙f5.

2229



R. Lincoln, 1989

2229

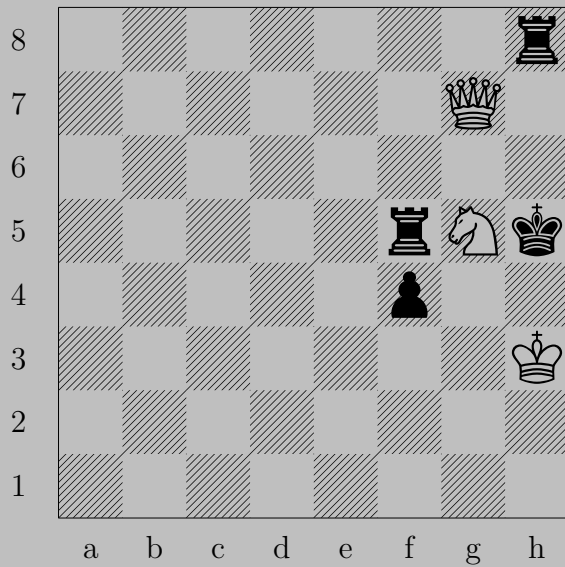


♙c3

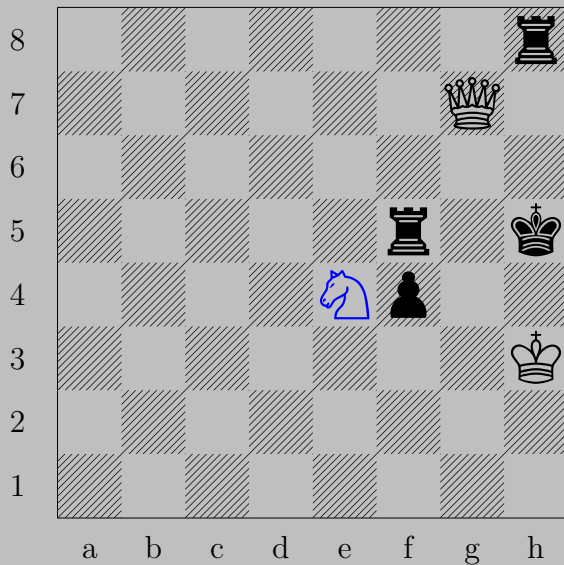
If ♔d6, ♚c6. If ♙d6, ♚c4. If ♙a7, ♚e5. If ♞d3, ♚xd3.

Otherwise, ♚c5.

2230



R. Lincoln, 1989

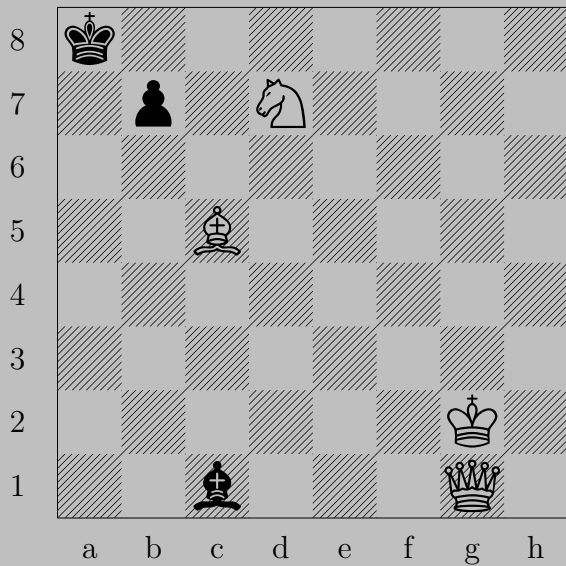


♞e4

If ♕f3, ♞g3. If ♖a5-e5 or ♖g5, ♞f6. If ♖f6-f8, ♚g5.

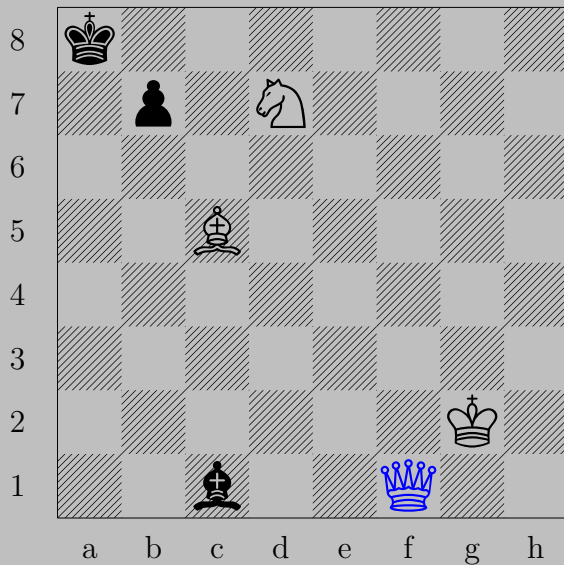
If ♖h6, ♚g4. If ♖h7, ♚xh7. If ♖a8-g8, ♚h7.

2231



R. Lincoln, 1990

2231

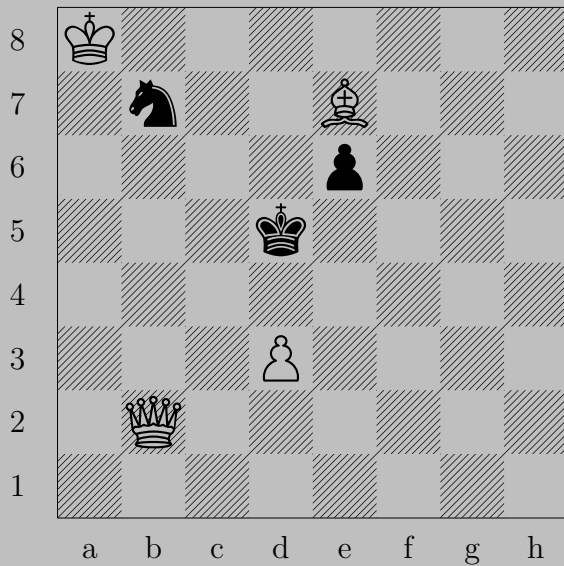


♔f1

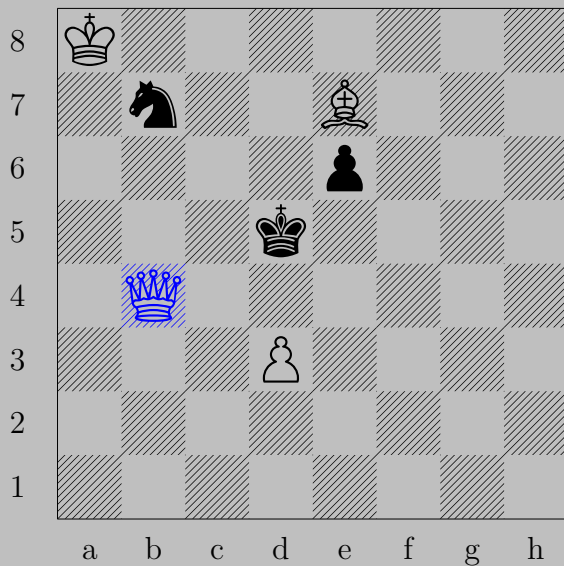
If ♘b6, ♔a6. If ♘b5, ♔f3. If ♗f4-h6, ♔a1.

Otherwise, ♔f8.

2232



R. Lincoln, 1990

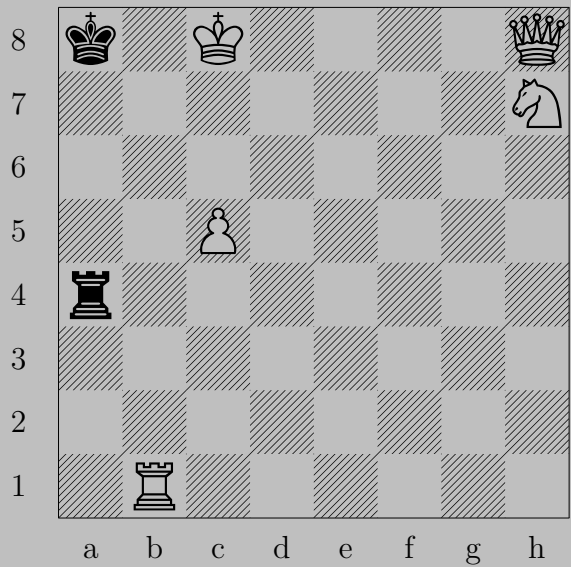


♙b4

If ♘e5, ♙c4. If ♘c5, ♙xc5. If ♘d6, ♙xd6. If ♚c6, ♙xb7.

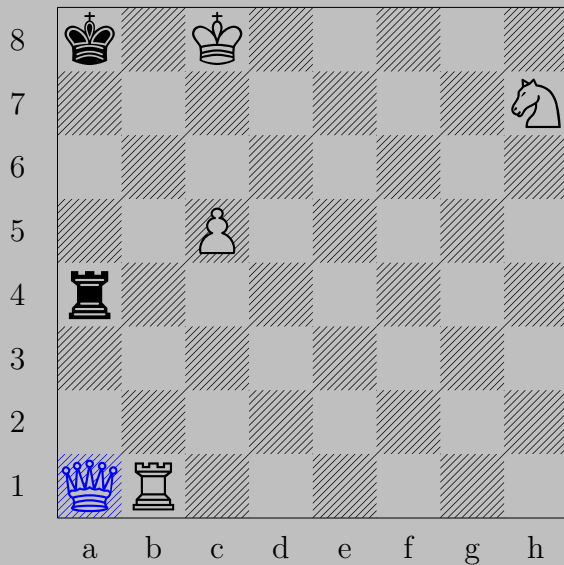
Otherwise, ♙e4.

2233



R. Lincoln, 1992

2233

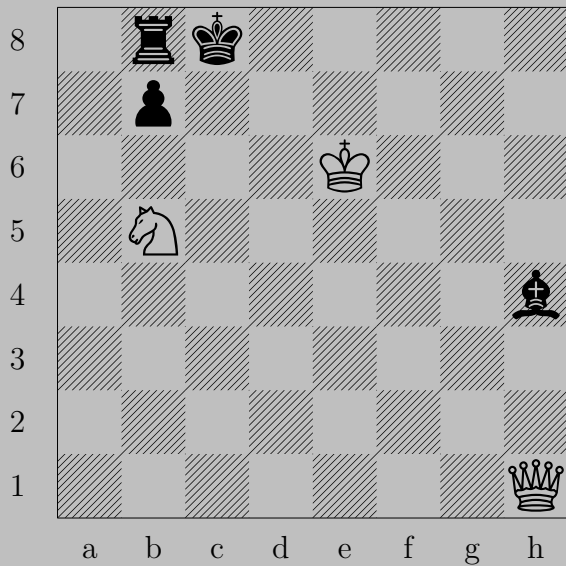


♔a1

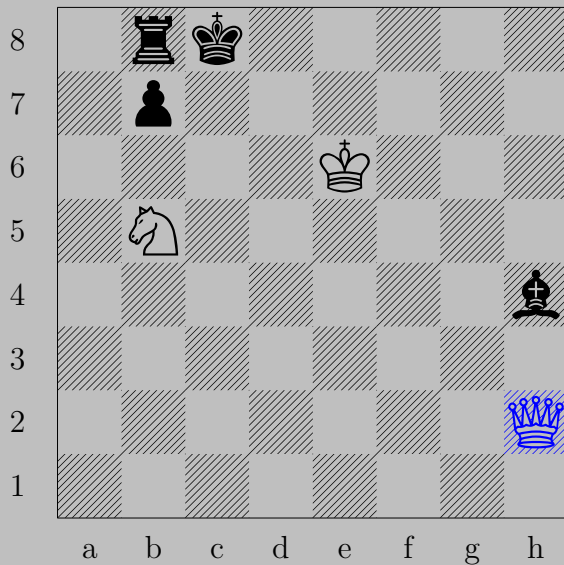
If ♖×a1, ♖×a1. If ♖a7, ♖b8.

Otherwise, ♔×♖.

2234



R. Lincoln, 1992

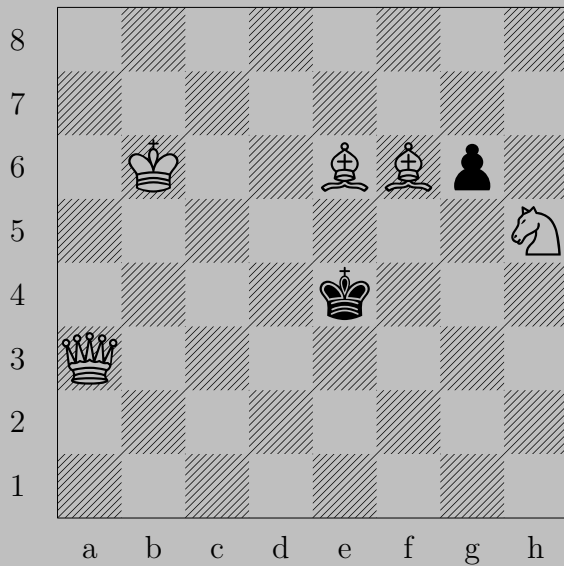


♙h2

If ♖d8, ♘a7. If ♖g3, ♙h8. If ♙d8, ♙×b8.

Otherwise, ♙c7.

2235



R. Lincoln, 1992

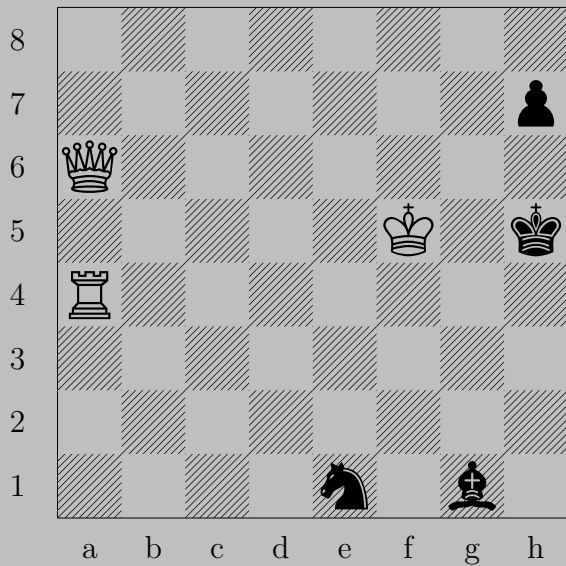
2235



♔g4

If ♖d5, ♕d3. If ♜xh5 or ♜g5, ♕f3.

2236



R. Lincoln, 1991



♔b7

If ♔h6, ♖h4. If ♘h6, ♙f7. If ♞e3, ♚h1.

Otherwise, ♙xh7.

2237



R. Lincoln, 1991

2237

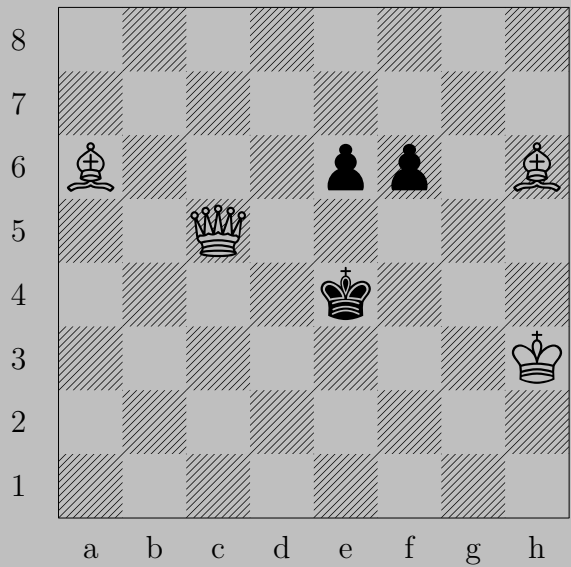


♙e6

If ♘g4, ♙h6. If ♘d2, ♙e2. If ♘f7, ♙g6. If ♘h3, ♙xh3.

Otherwise, ♙f5.

2238



R. Lincoln, 1988

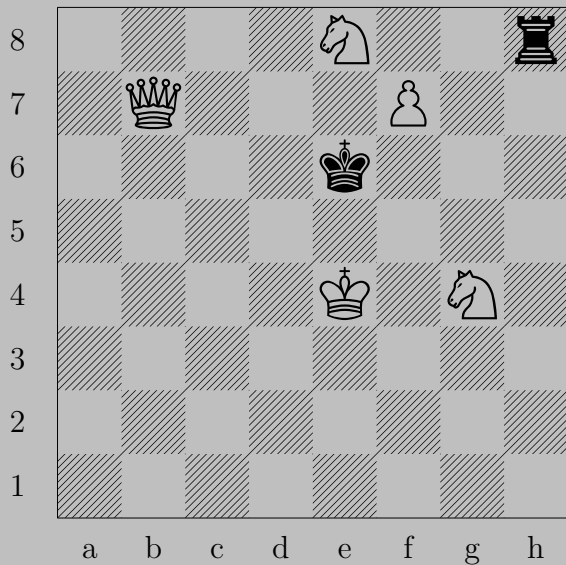
2238



♙d6

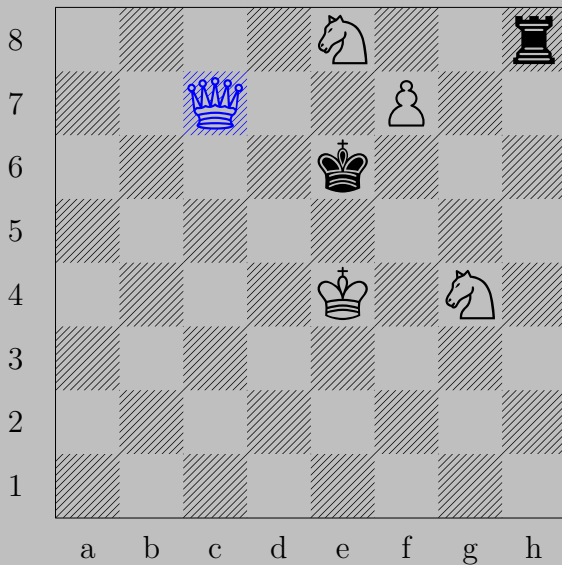
If ♖e5, ♙d3. If ♖f5, ♙b7. If ♙f5, ♙d3. If ♙f3, ♙f4.

2239



R. Lincoln, 1988

2239



♙c7

If ♖h7, ♘f8(♘) If ♖g8, ♘×g8(♙).

Otherwise, ♘g7.

2240



R. Lincoln, 1990

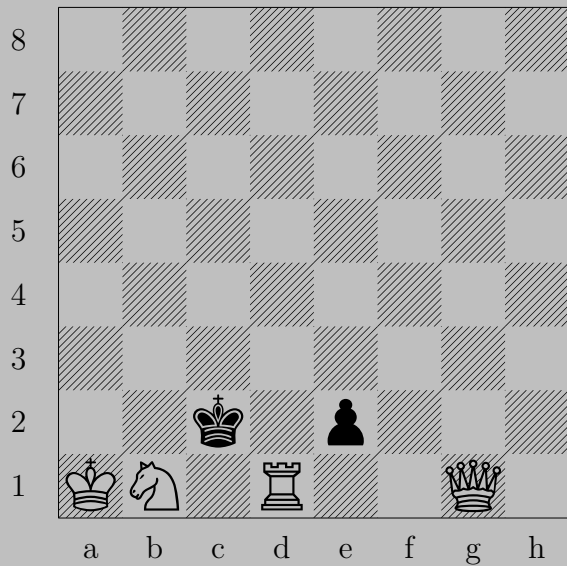


♙e2

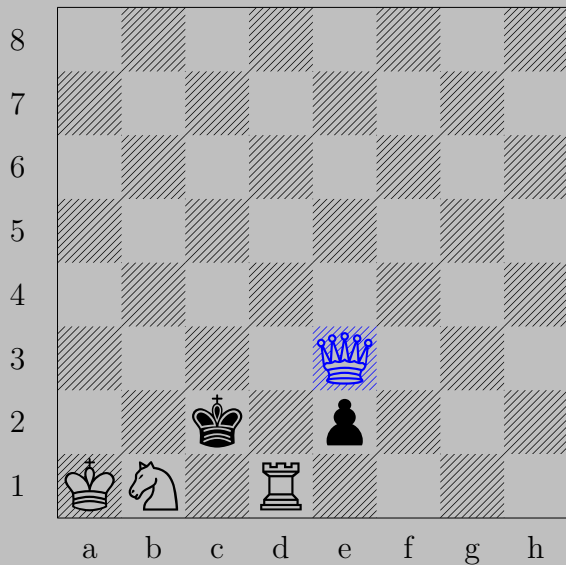
If ♘c5, ♖(c6)d6. If ♘f2, ♙c4. If ♕e3, ♙×d3.

Otherwise, ♙×e4.

2241



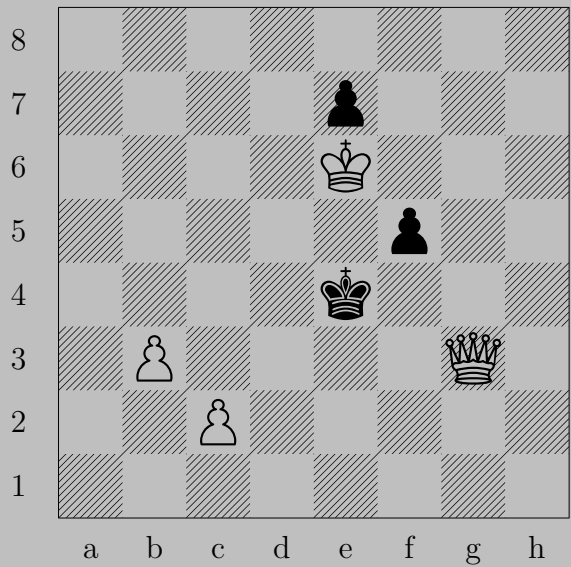
F. Lindgren, 1928



♙e3

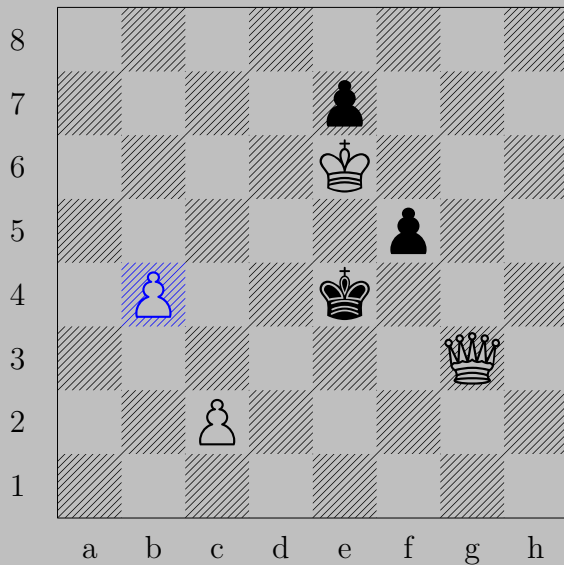
If ♖xd1(♙), ♙c3. If ♖xd1(♞), ♞a3. If ♖e1(♙), ♙d3. If ♖e1(♞), ♞c1.
 If ♙xd1, ♙d2.

2242



L. Lindner, 1933

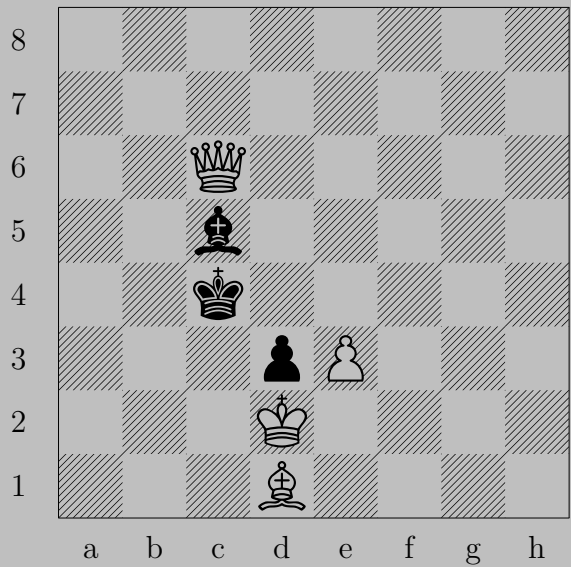
2242



♖b4, ♖f4 or ♔d4

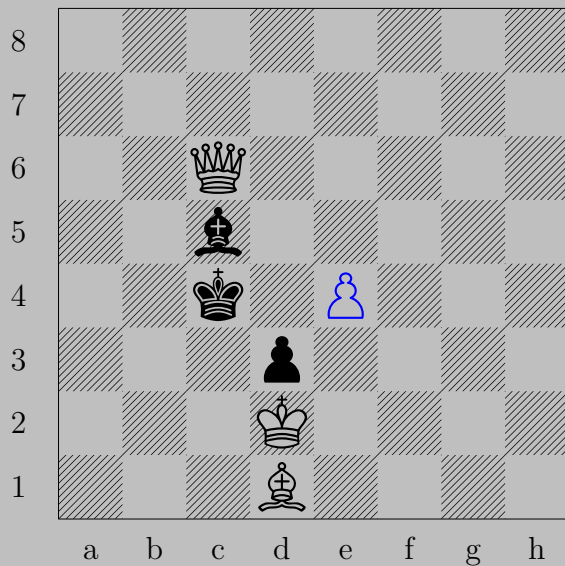
♙d3

2243



L. Lindner, 1933

2243



♖e4

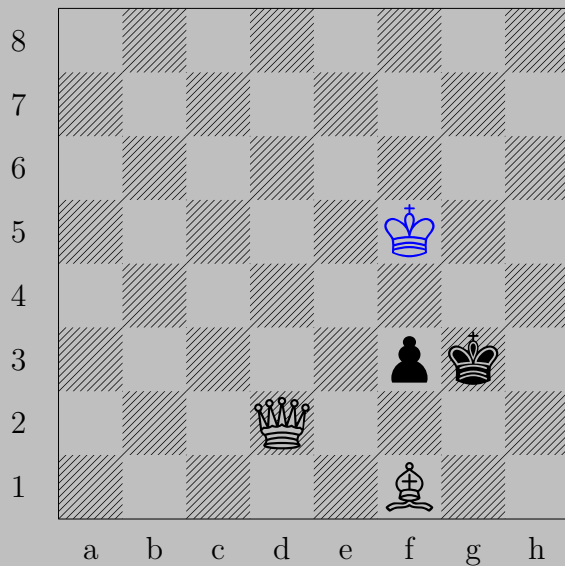
If ♔b4, ♕a4. If ♔d4, ♕d5.

2244



L. Lindner, 1933

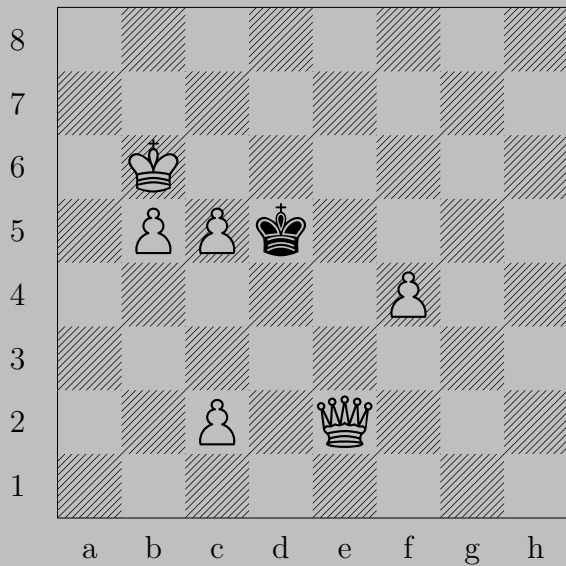
2244



♔f5

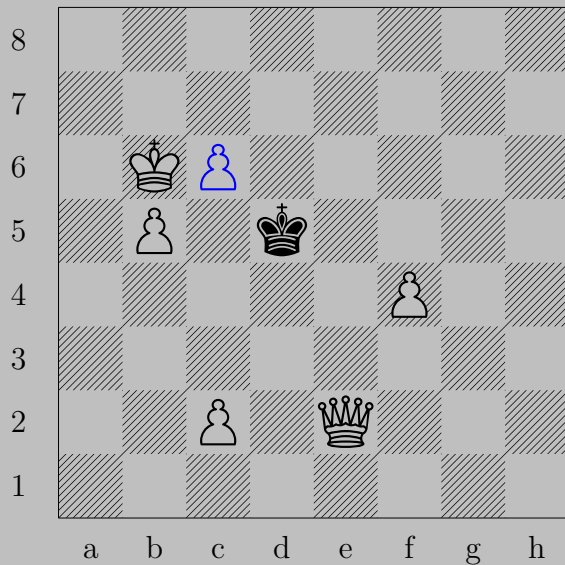
If ♔h4, ♚h2. If ♖f2, ♙f4.

2245



L. Lindner, 1933

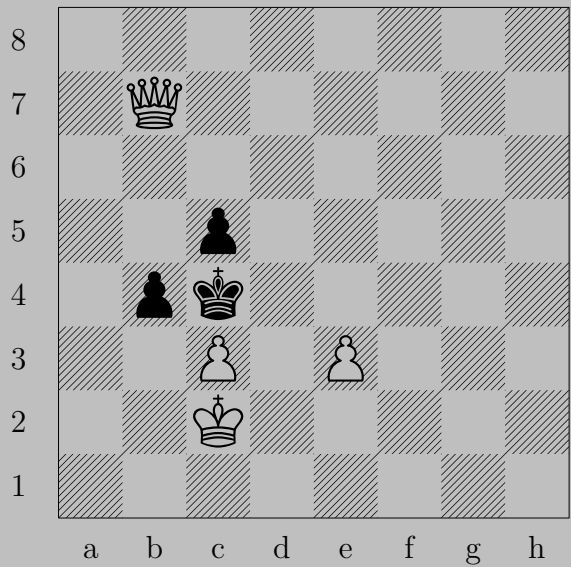
2245



♙c6

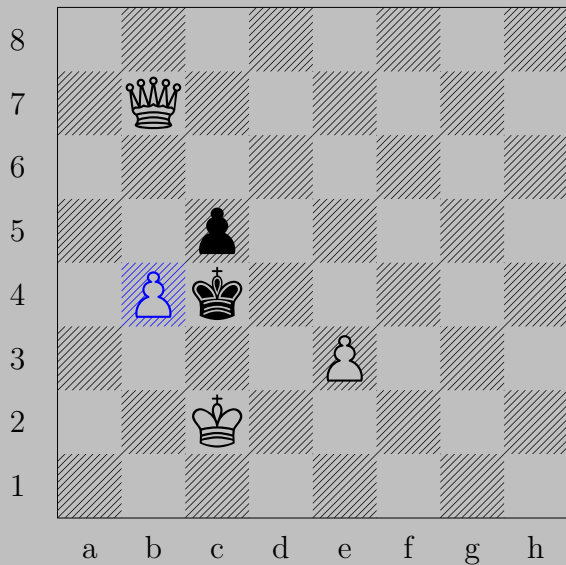
If ♔d6, ♚e5. If ♔d4, ♚d3.

2246



L. Lindner, 1933

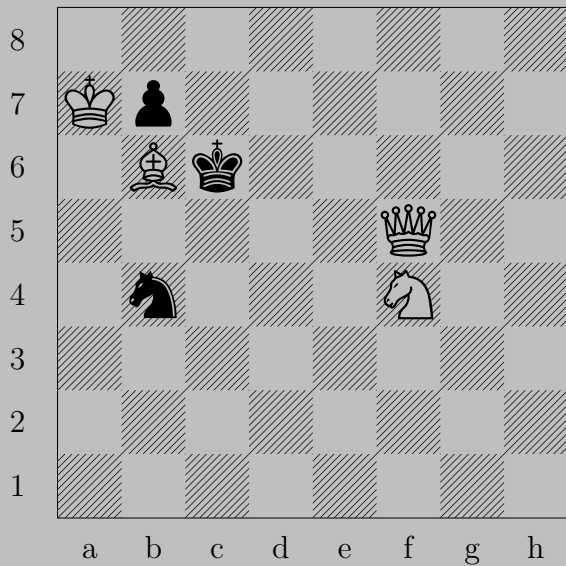
2246



♙×b4, ♙×b4

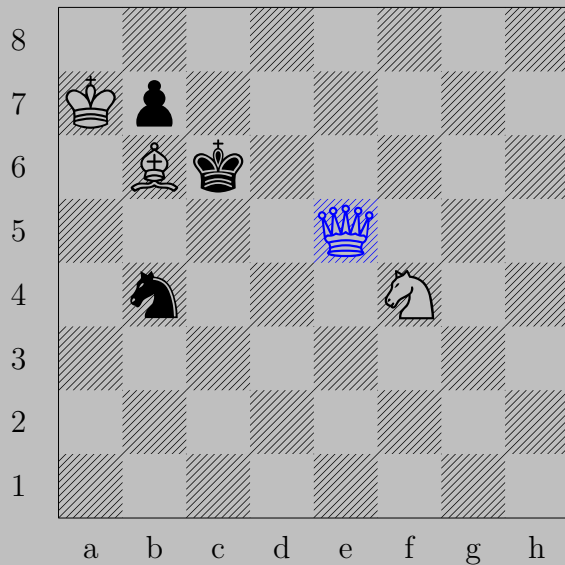
♚c6.

2247



L. Lindner, 1933

2247

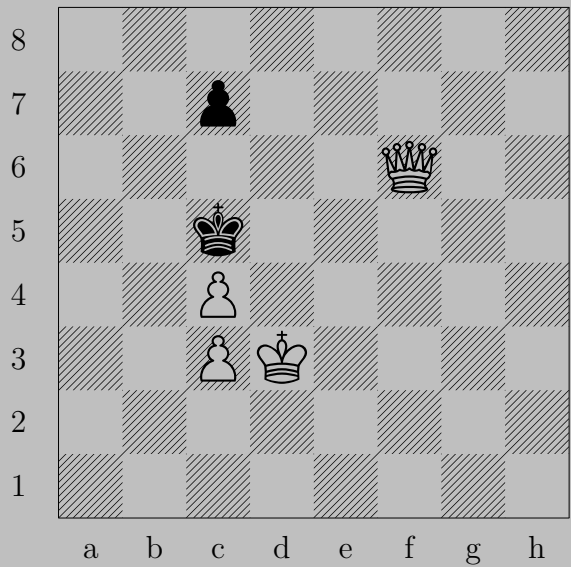


♙e5

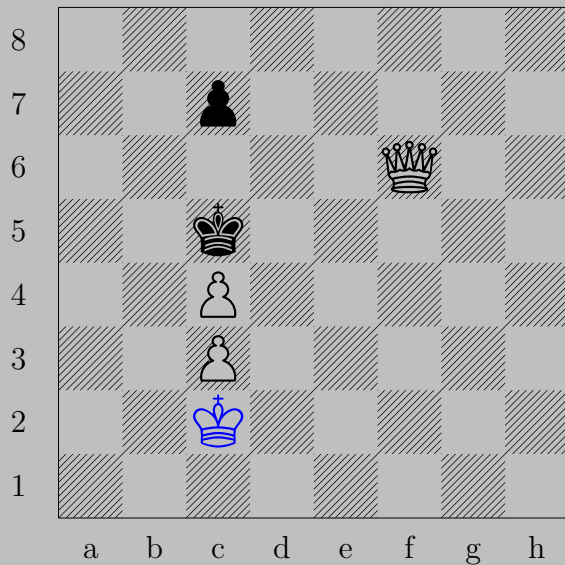
If ♔d7, ♙e6.

If ♞d5, ♙×d5. Otherwise, ♙d5.

2248



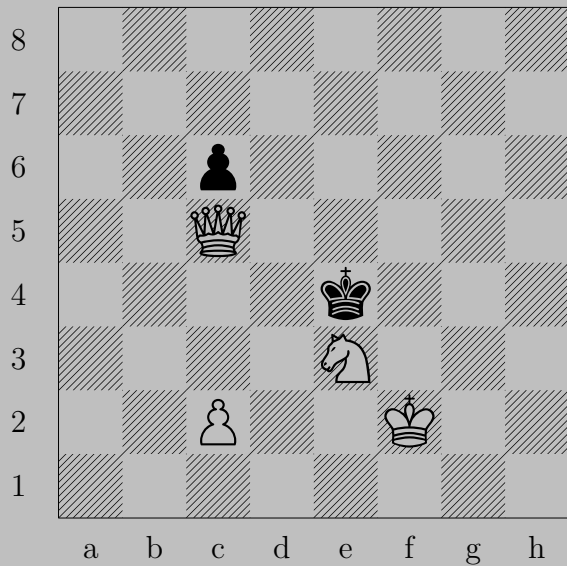
L. Lindner, 1933



♔c2

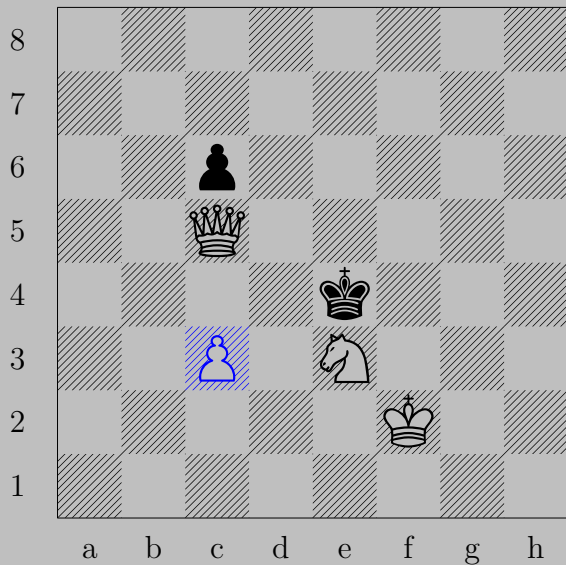
If ♕xc4, ♔c6. If ♖c6, ♕d4.

2249



L. Lindner, 1933

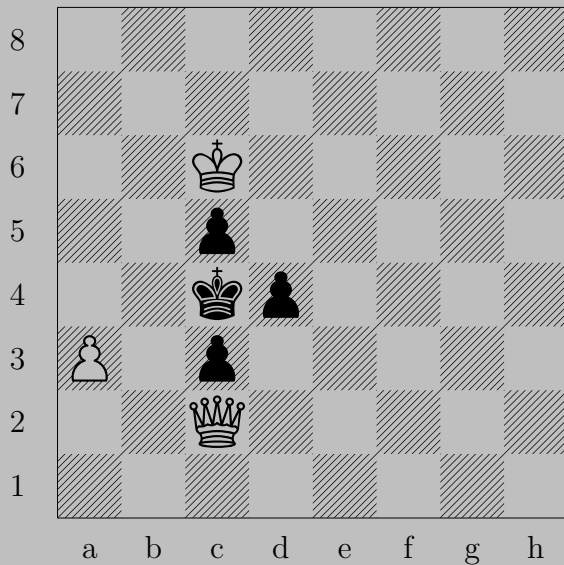
2249



♖c3

If ♔d3, ♕d4. If ♔f4, ♕f5.

2250



L. Lindner - E. Szenzgyörgyi, 1933

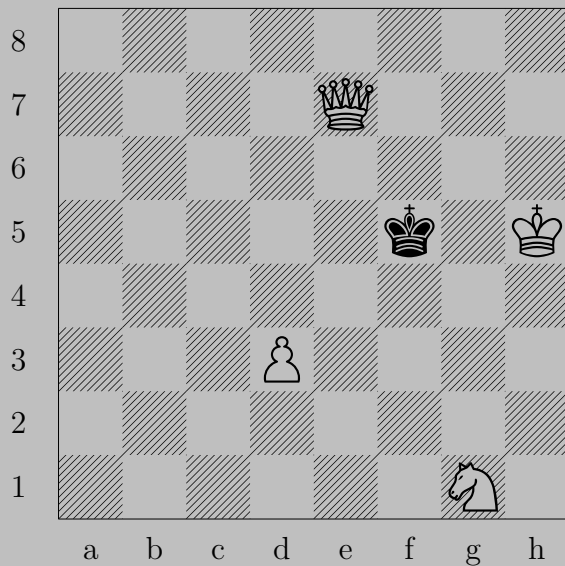
2250



♙d1

If ♖d3, ♙a4. If ♖c2, ♙xc2.

2251



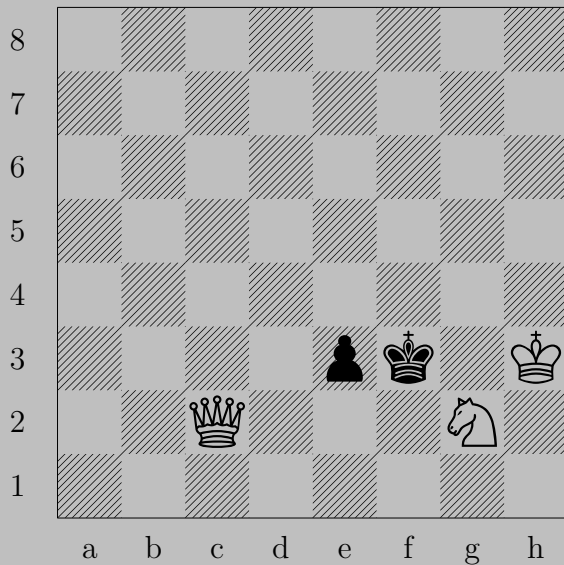
L. Lindner - E. Szenzgyörgyi, 1933

2251



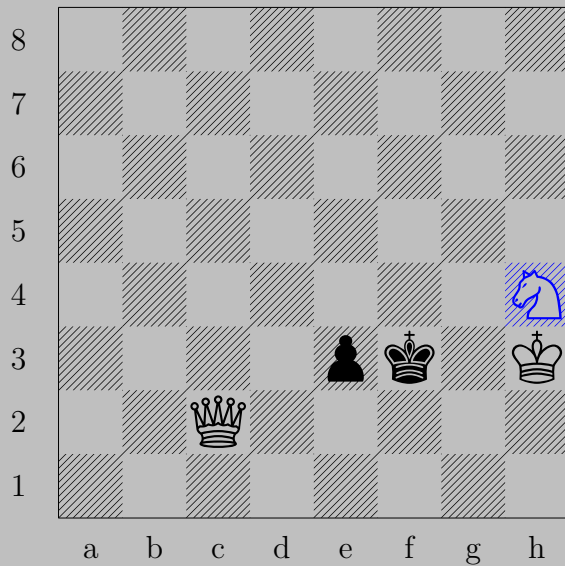
♙d4, ♔f4
♚e5



2252



L. Lindner - E. Szenzgyörgyi, 1933

2252



h4+, f4

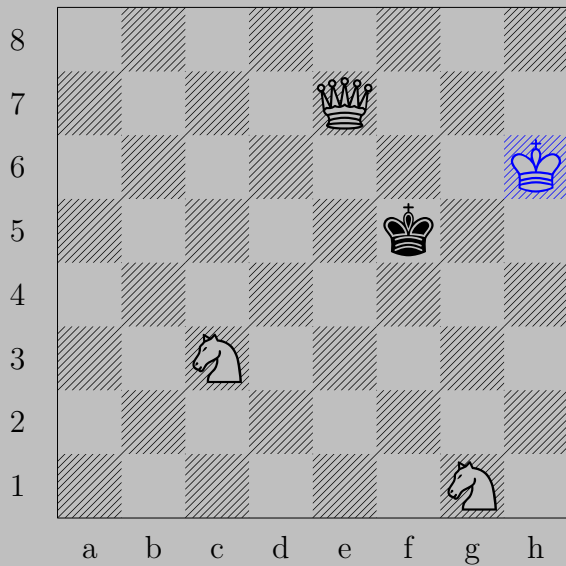
f5

2253



L. Lindner - E. Szenzgyörgyi, 1933

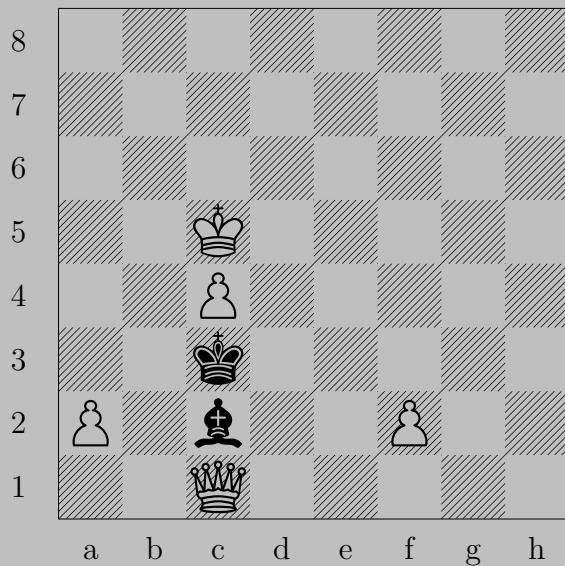
2253



♔h6, ♕f4 or ♕g4

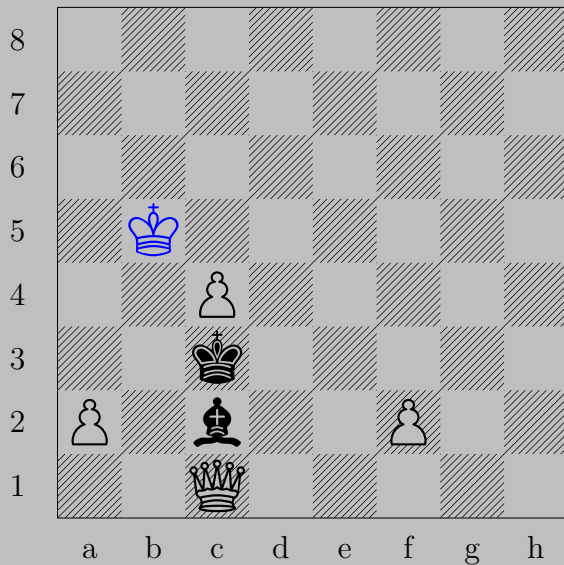
♚g5

2254



L. Lindner - E. Szenzgyörgyi, 1933

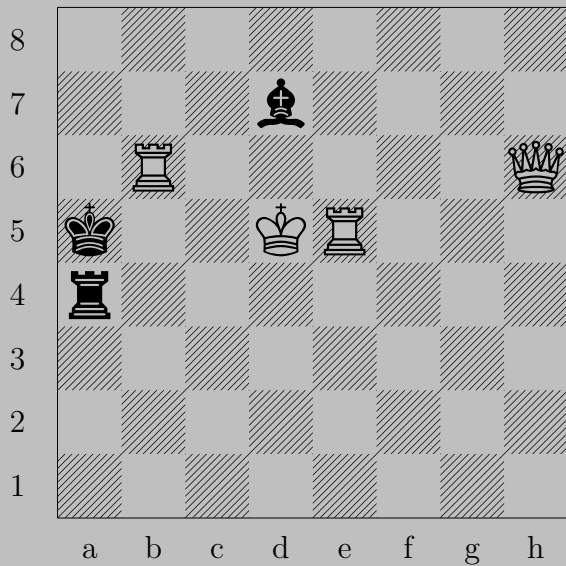
2254



♔b5, ♖d3 or ♖d4

♕e3

2255



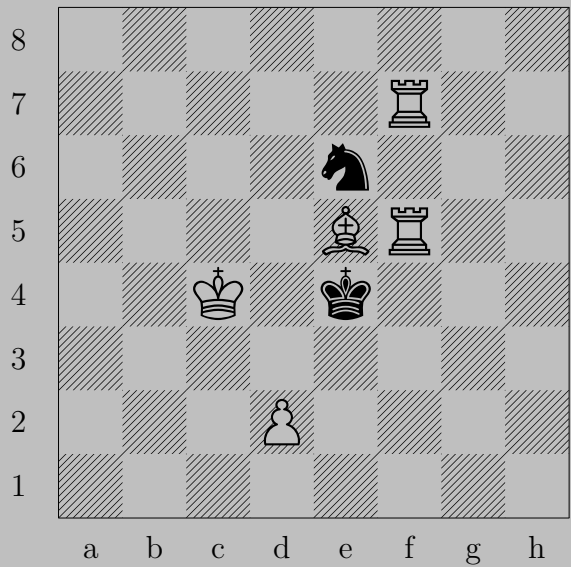
J F. Ling, 1953



♔c6

If ♘xc6+, ♔xc6. If ♘e6+, ♔xe6. If ♖b4, ♖a6. If ♖c4, ♔xc4.
 If ♖d4+, ♔xd4. If ♖e4, ♔xe4. Otherwise, ♔d6.

2256



M. Lipton, 1956

2256

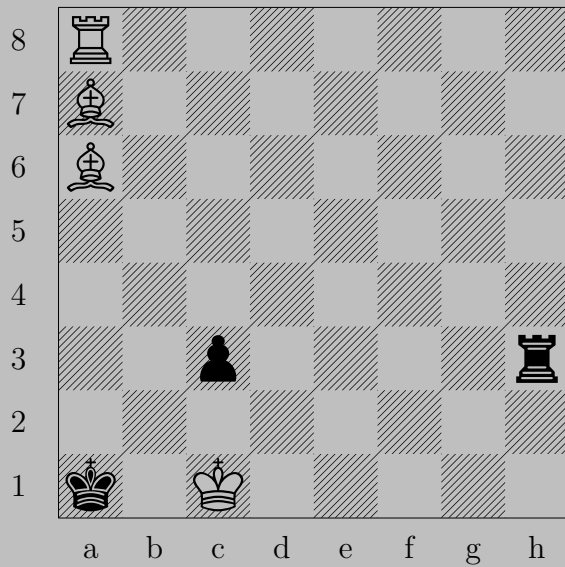


♗d6

If ♘f4, ♖xf4.

Otherwise, ♖e5.

2257



M. Lipton, 1960

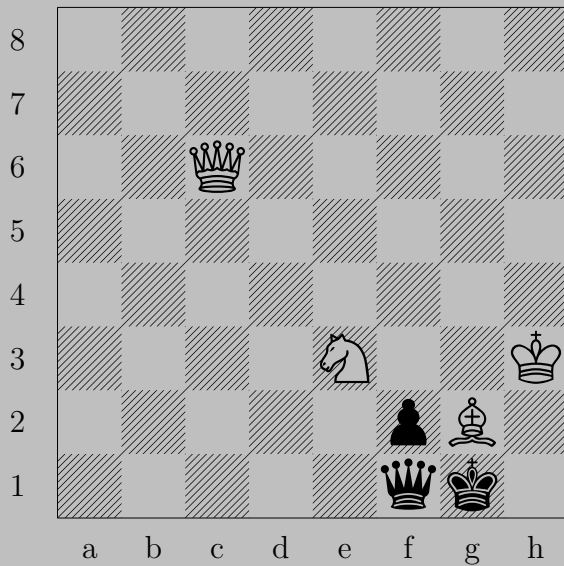
2257



♙b6

If ♖h1+, ♙f1. If ♖h2, ♙e2. If ♖h5, ♙b5. If ♖h7, ♙b7. If ♖c2, ♙d3.
Otherwise, ♙c4.

2258



M. Lipton, 1952

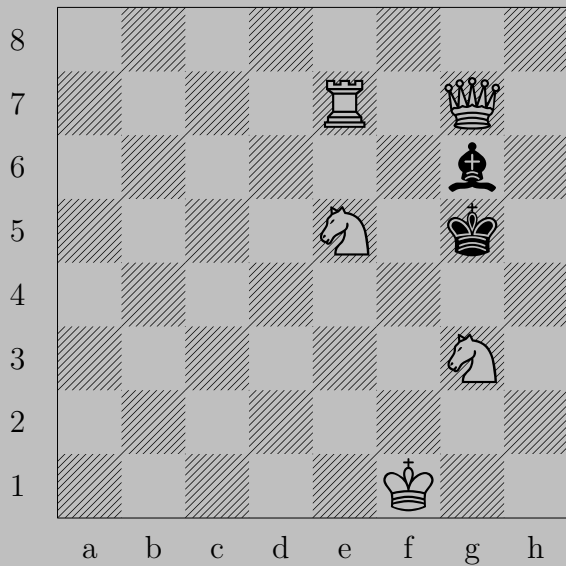
2258



g6

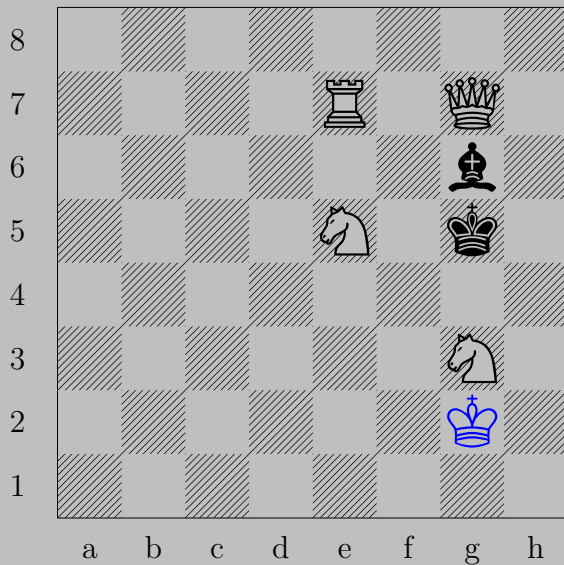
If xg2+, xg2. If a6, c6. If b5, d5. If d1 or e2, f3.
Otherwise, e4.

2259



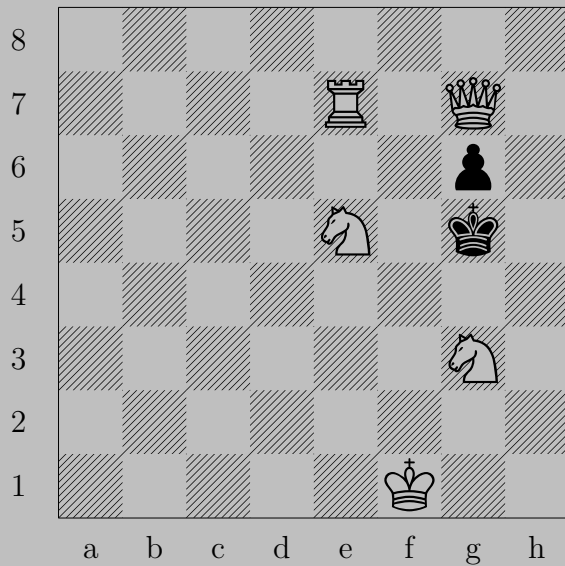
E. Livshitz, 1967

2259

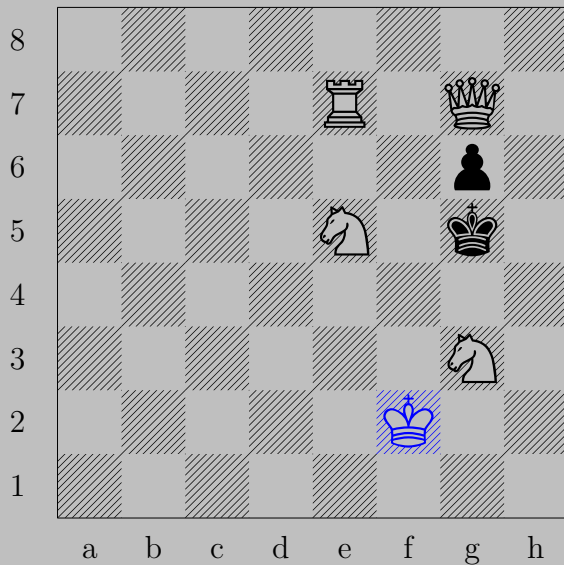


♔g2

If ♔f4, ♚h6. If ♔h4, ♚f6.

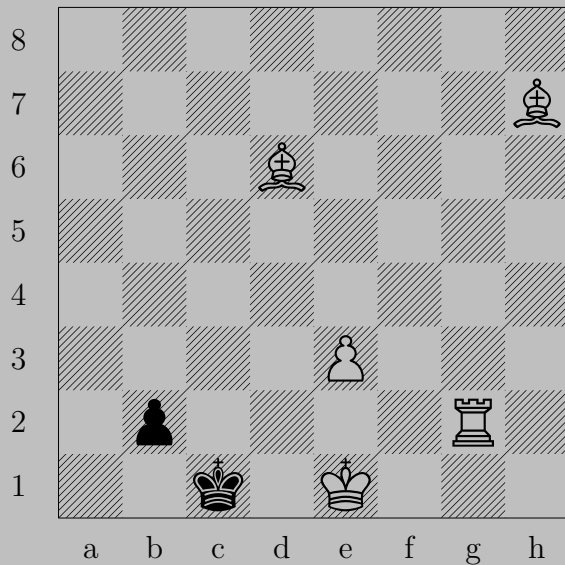


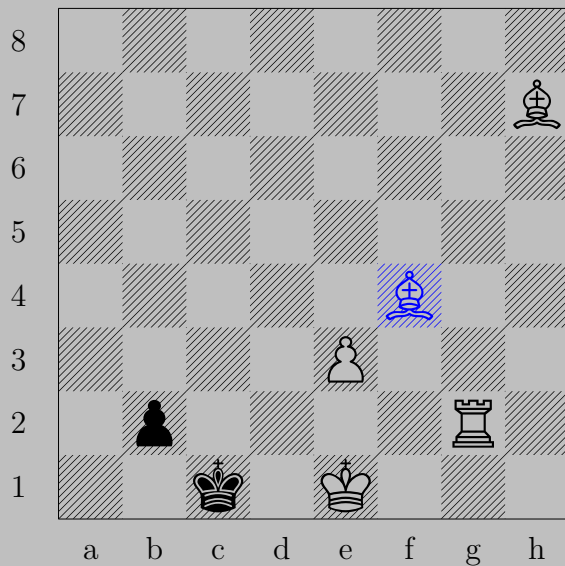
2260



♔f2

If ♔f4, ♕f6. If ♔h4, ♕h6.





♞f4

if ♞b1(♞) , ♞e4 . If ♞b1(♝) , ♞c2 .

2262



I. Lyapunov - V. Fishman, 1961



♔d6

If ♖xd6, ♜c1. If ♖c6 or ♖c5, ♔b8. If ♜e8-h8, ♔xd7.

2263

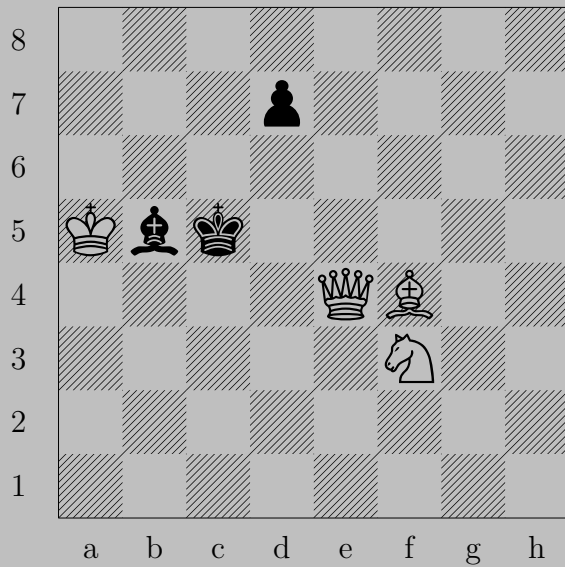


I. Lyapunov - V. Fishman, 1961



Rd6

If Pxd6 , Kc3 . If Pc6 , Rxc6 . If Pc5 , Rc6 . If Re8-h8 , Kxd7 .





♞e5

If ♖d6, ♙e3. If ♔d6 or ♙a4 or ♙c6, ♞d3.

Otherwise, ♞x d7.

2265



A. Labusov, 1975

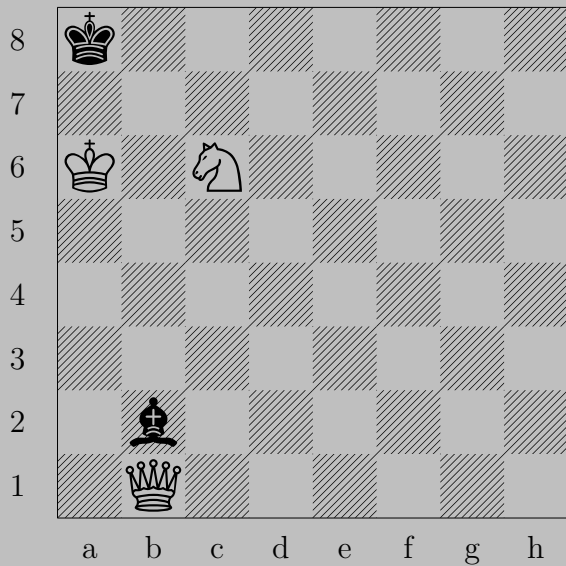


♞f2

If ♔e5 , ♚d4 . If ♔f3 , ♚g4 .

Otherwise, ♚f5 .

2266



M. Locker, 1967

2266



♔g1

If ♞d4, ♔g8.

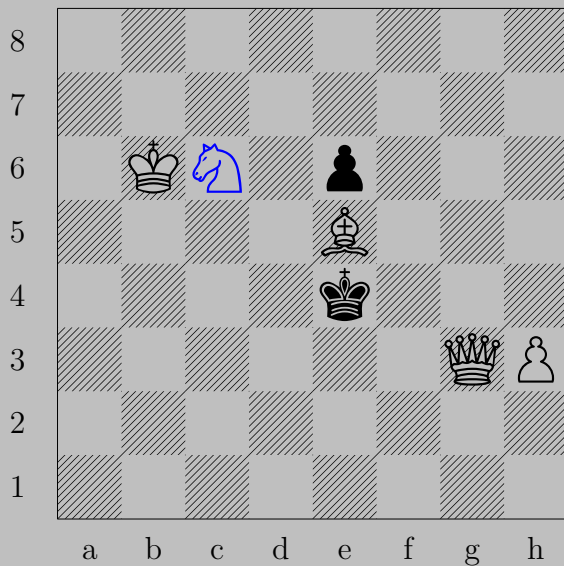
Otherwise, ♔a7.

2267



M. Locker, 1966

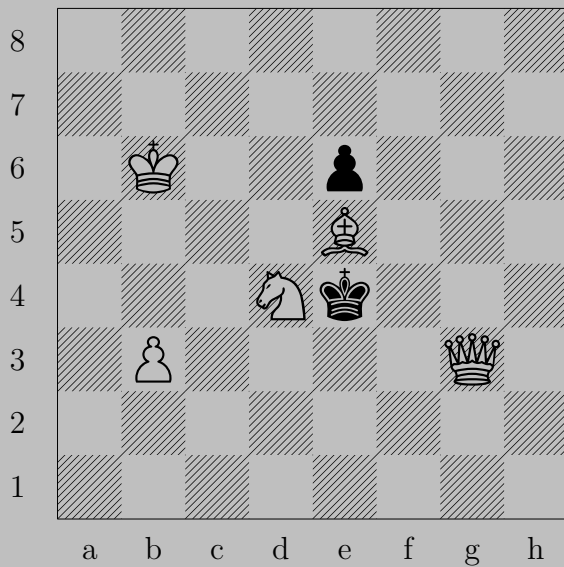
2267



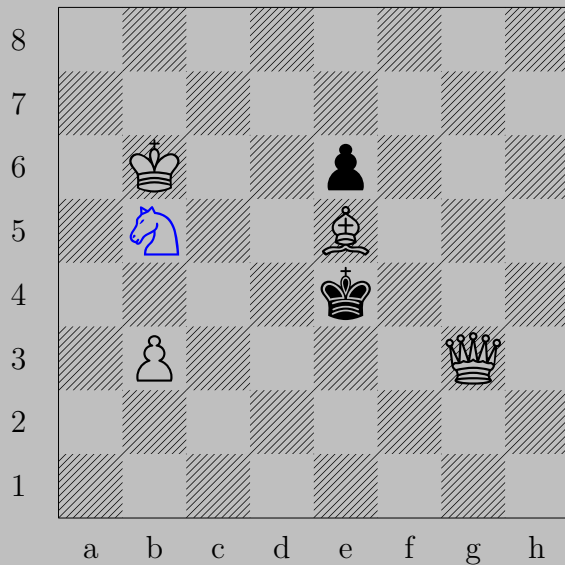
c6

If d5, d3. If f5, g4.

2268



M. Locker, 1966



♞b5

If ♔d5, ♞c3. If ♔f5, ♞d6.

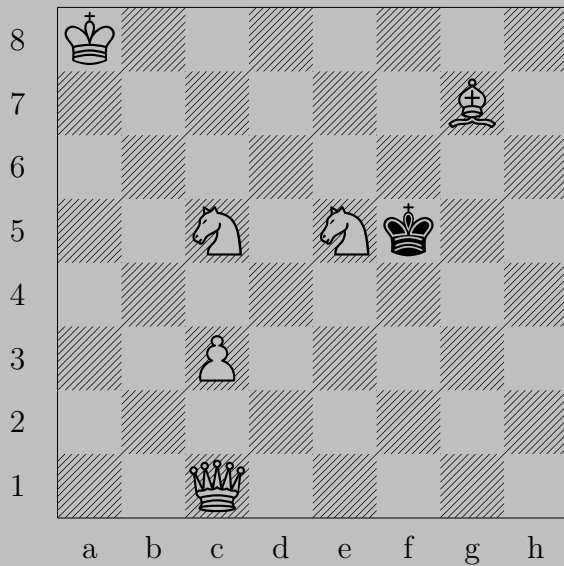




♞h6

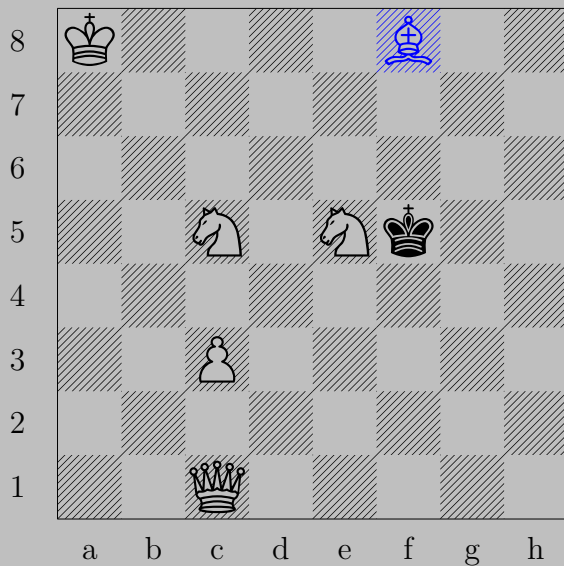
If ♞e5 , ♞f4 . If ♞f6 , ♞g5 .

2270



M. Locker, 1970

2270



♔f8

If ♔×e5, ♚g5. If ♔f6, ♚f4.

2271



M. Locker, 1970

2271

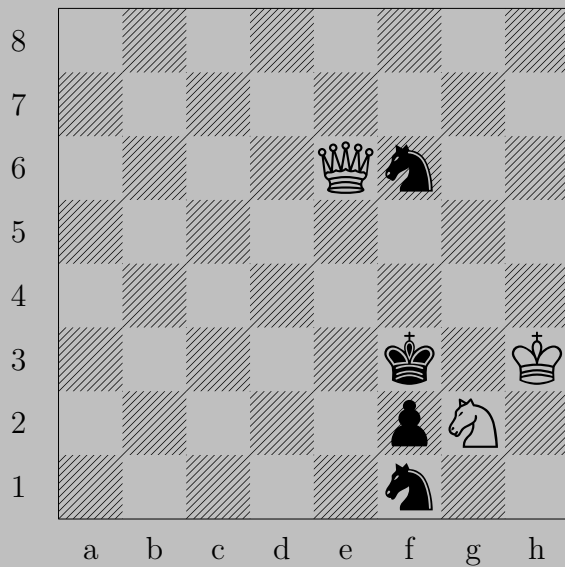


Nf4

If $\text{R} \times \text{g2}+$, $\text{N} \times \text{g2}$. If $\text{R} \text{a2-c2}$ or $\text{R} \text{f2}$, $\text{N} \text{d3}$. If $\text{R} \text{e2}$, $\text{Q} \times \text{e2}$.

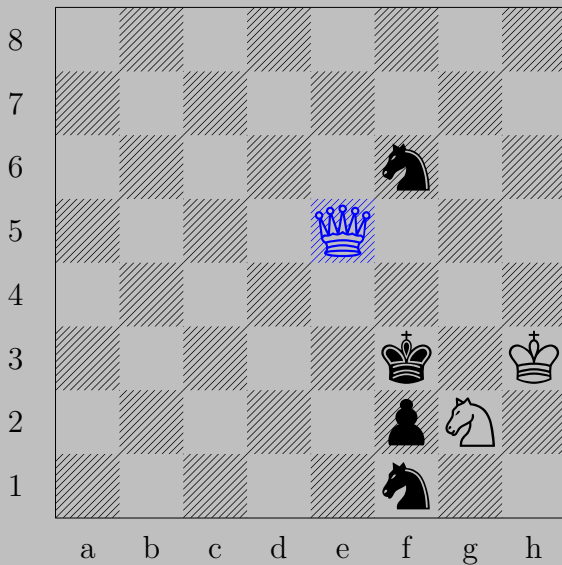
Otherwise, $\text{Q} \text{e2}$.

2272



M. Locker, 1971

2272

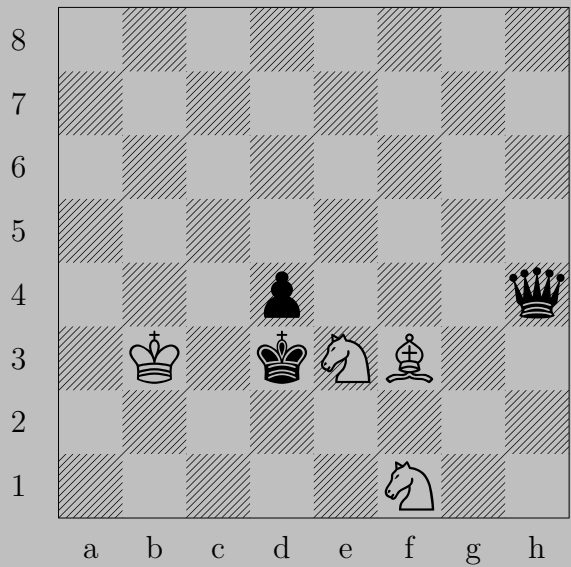


♚e5

If ♞e4, ♚h5. If ♞e3, ♚xe3.

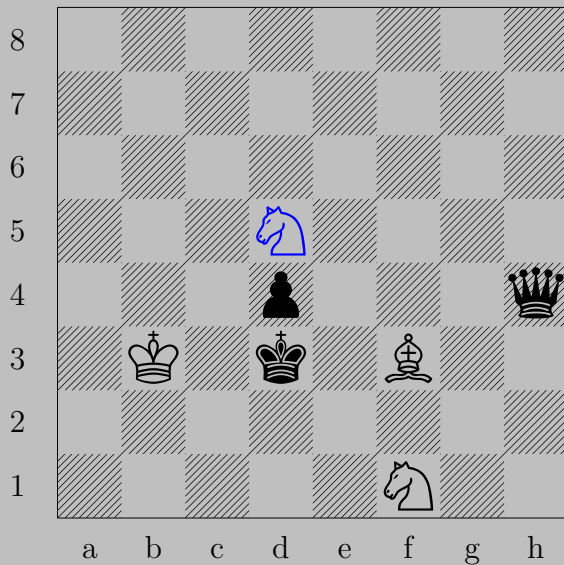
Otherwise, ♞h4.

2273



M. Locker, 1968

2273



♞d5

If ♚e7 or ♚e1 , ♞f4 .

Otherwise, ♞b4 .

2274



M. Locker, 1969

2274



♖f4

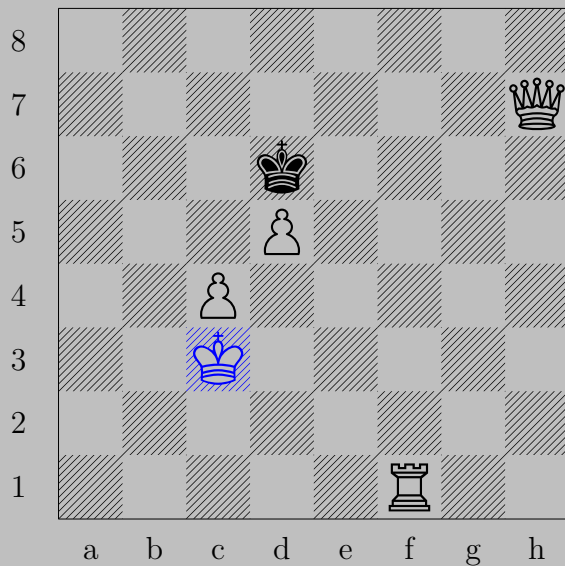
If ♔c5, ♚e7. If ♔e5, ♚c7.

2275



M. Locker, 1969

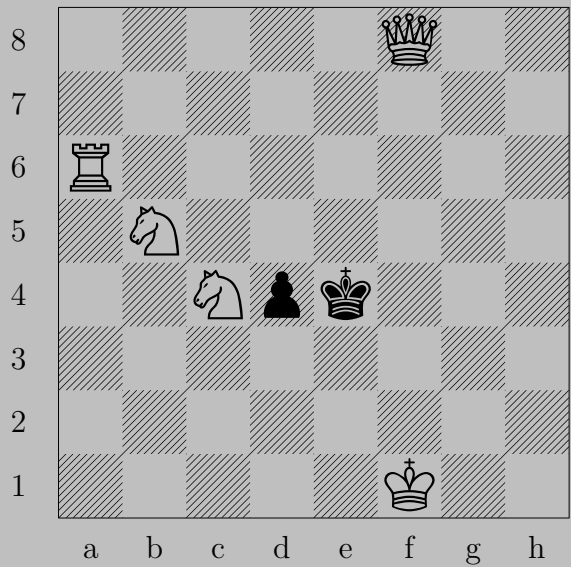
2275



♔c3

If ♔c5, ♚c7. If ♔e5, ♚e7.

2276



M. Locker, 1971

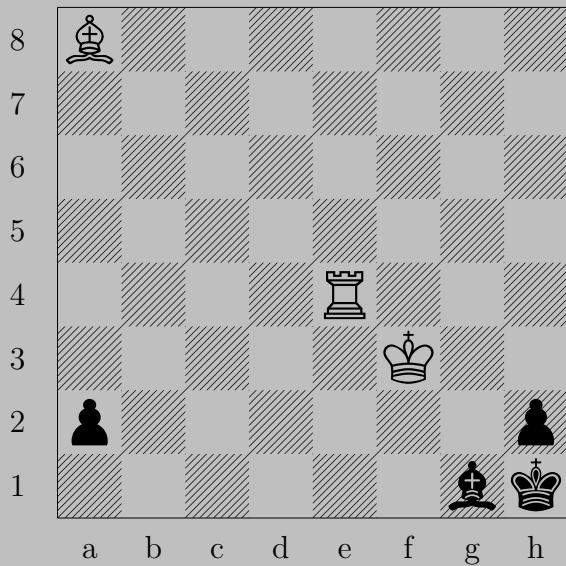
2276



♙f2

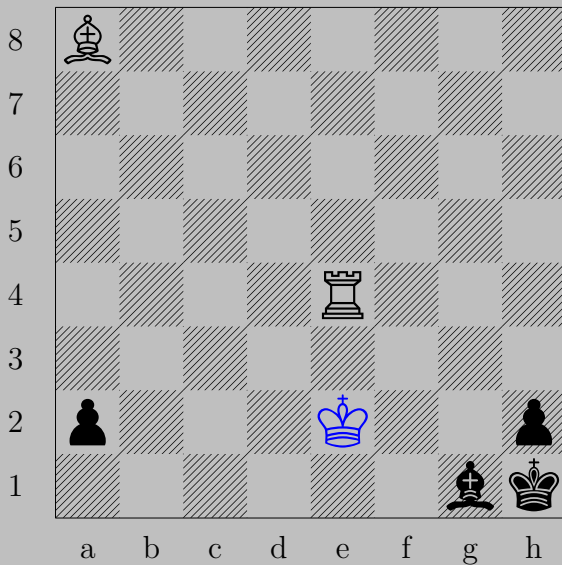
If ♖d3, ♞c3. If ♔d3, ♚e2. If ♔d5, ♚x d4.

2277



M. Locker, 1969

2277



♔e2

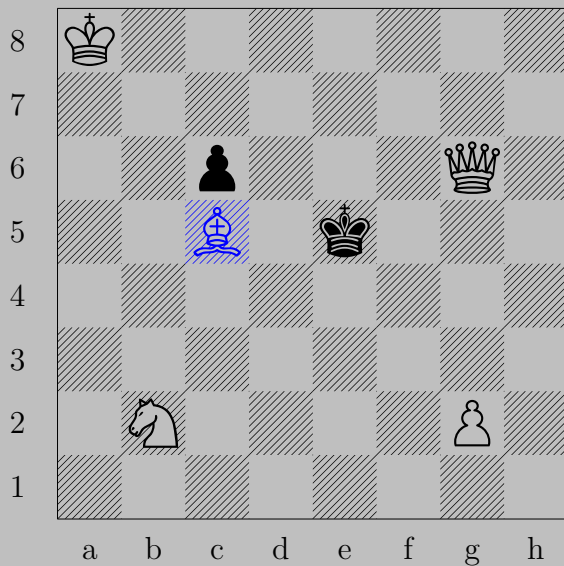
If ♕a7-f2, ♖g4. If ♜a1(♔), ♖a4.

2278



M. Locker, 1969

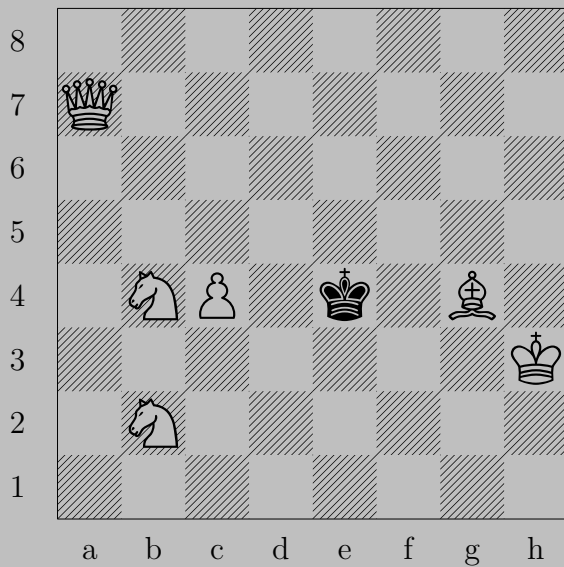
2278



♘c5

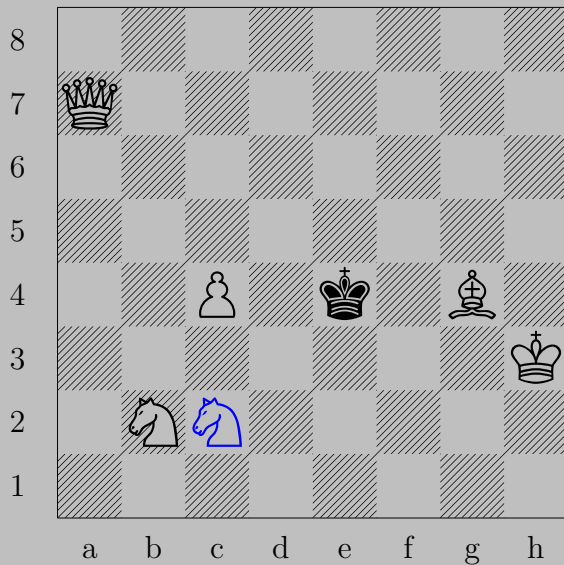
if ♔d5, ♚f5. If ♔f4, ♞d3.

2279



M. Locker, 1969

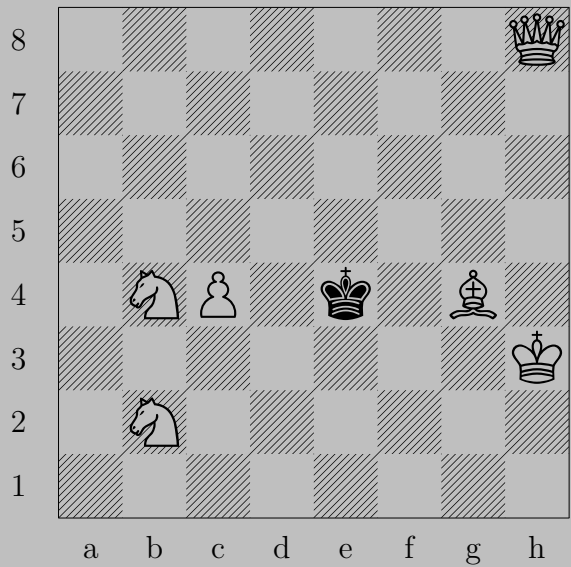
2279



Nc2

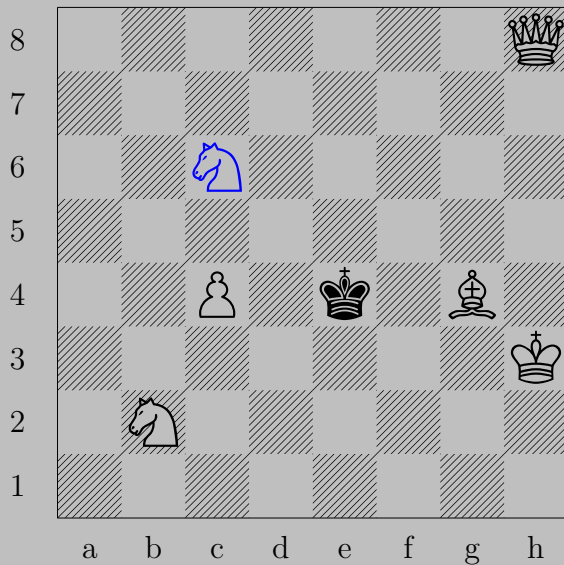
If Ke5 , Qd4 . If Kf4 , Qe3 .

2280



M. Locker, 1969

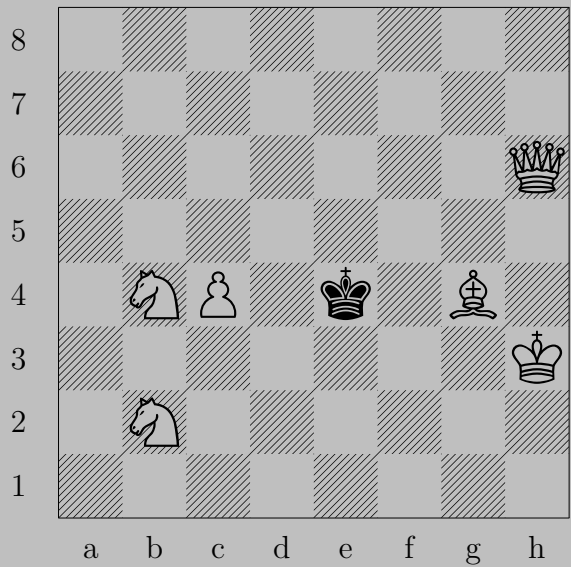
2280



Nc6

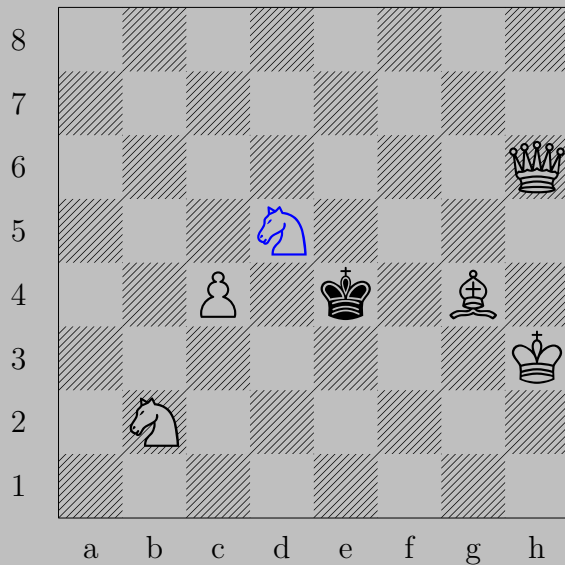
If Ke3 , Qd4 . If Kf4 , Qe5 .

2281



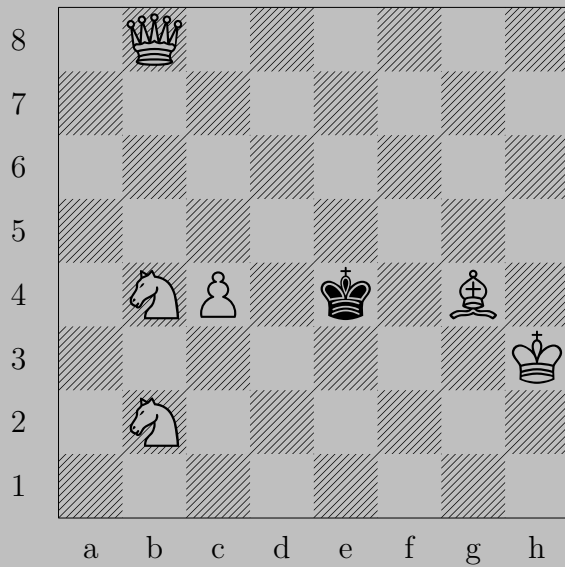
M. Locker, 1969

2281

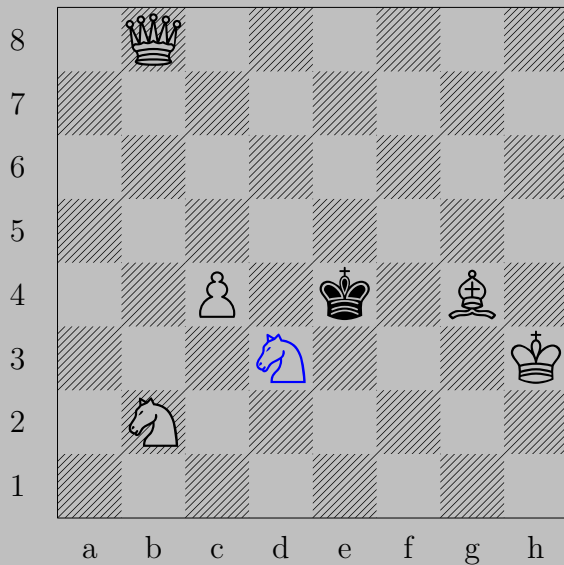


♞d5

If ♔d4, ♙e3. If ♔e5, ♙f4.



2282



♞(b4) d3

If ♔d4, ♙e5. If ♔e3, ♖f4.

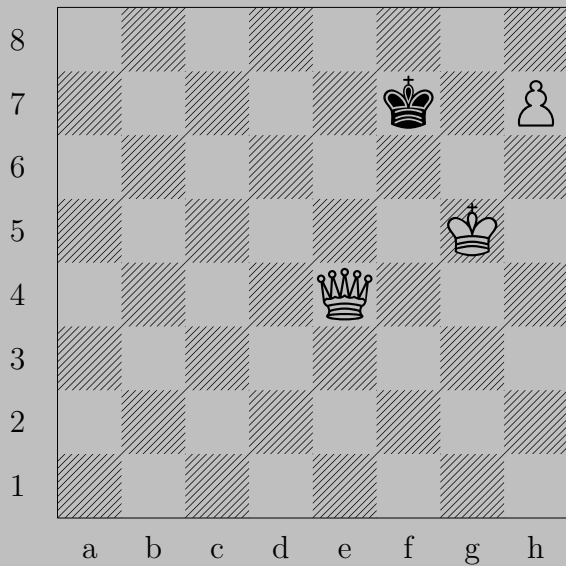




♔g6

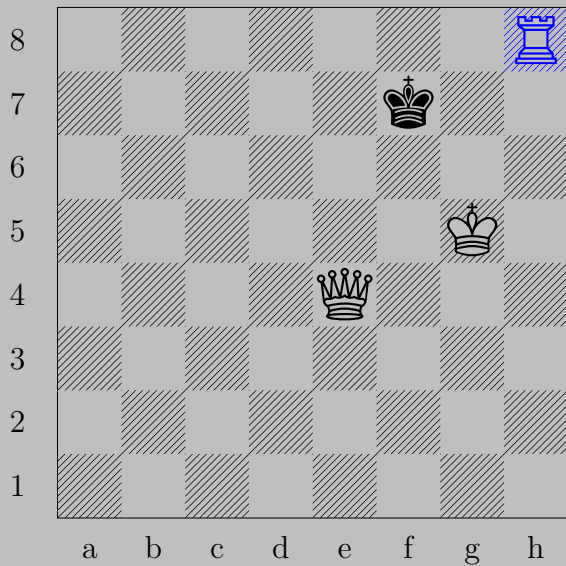
If ♕f3, ♖d3. If ♘f3, ♘f5. If ♘g2, ♘×g2.

2284



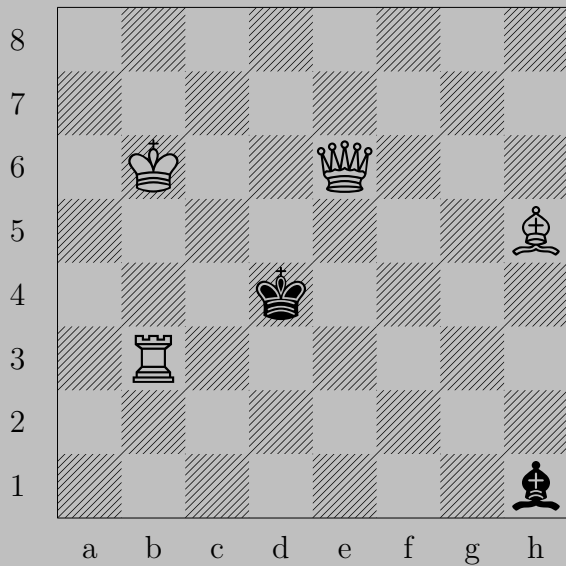
M. Locker, 1972

2284



$\text{♖h8}(\text{♖}), \text{♚g7}$
 ♙h7

2285



M. Locker, 1970

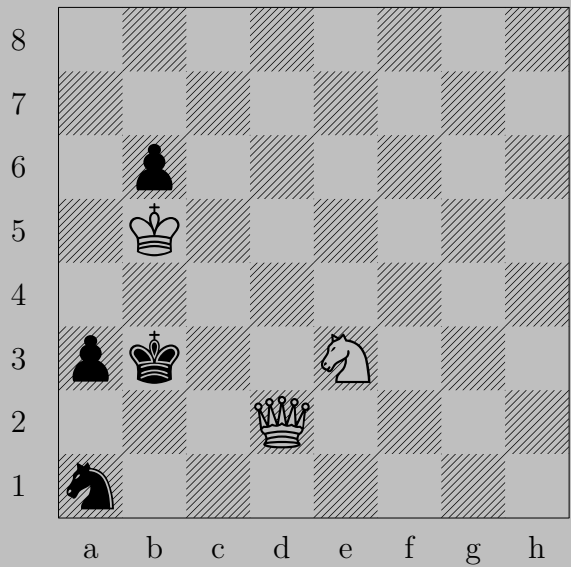


♔f7

If ♔e4, ♔f6. If ♔d5, ♔×d5.

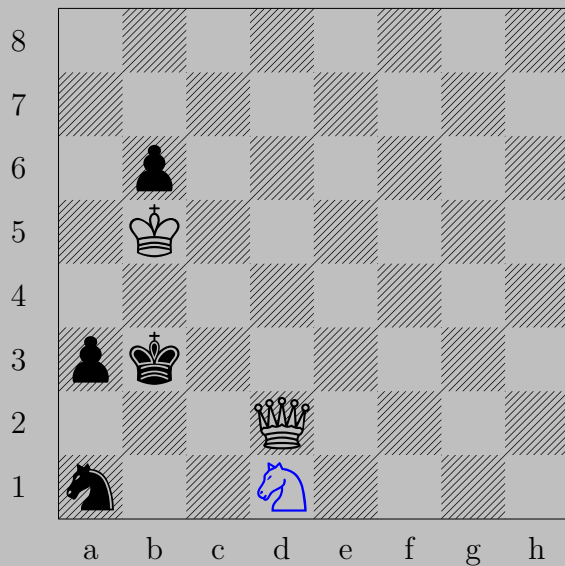
Otherwise, ♔e3.

2286



M. Locker, 1965

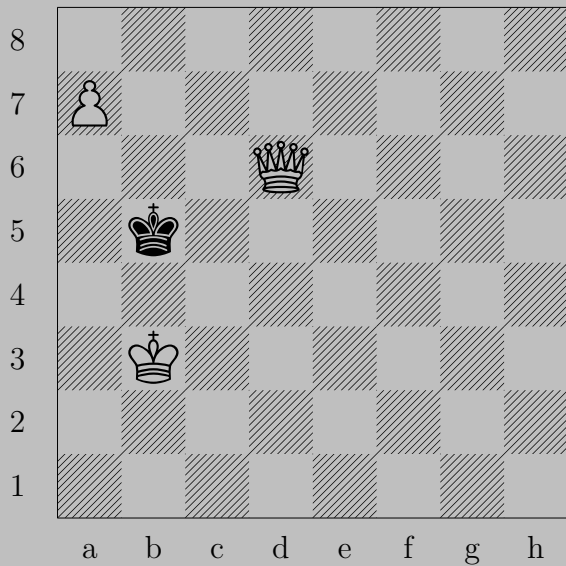
2286



♞d1

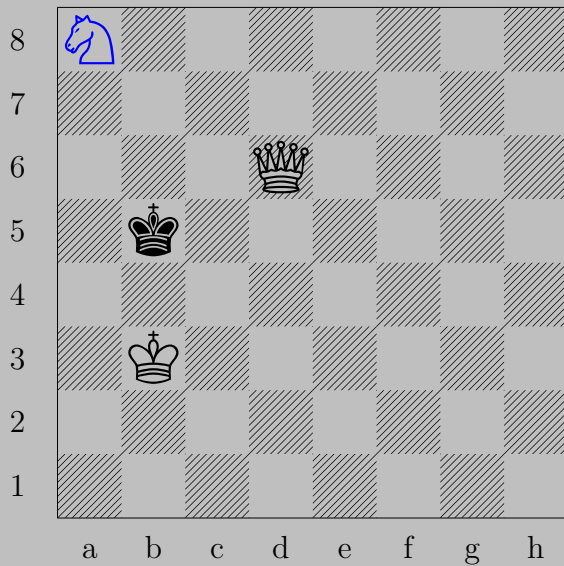
If ♜a2 , ♚b2 . If ♞c2 , ♚d5 .

2287



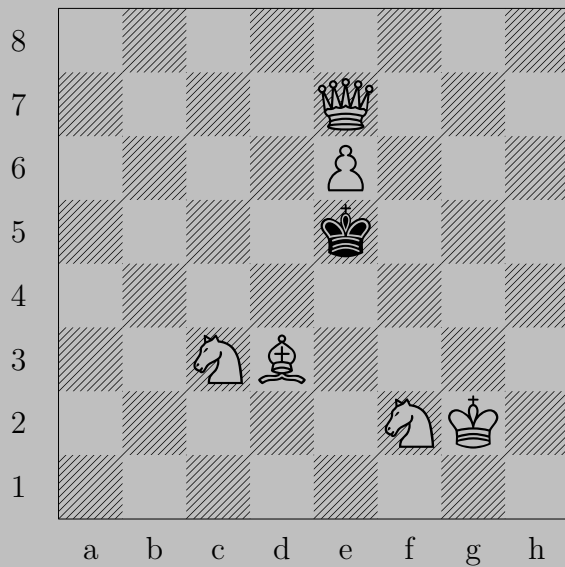
M. Locker, 1971

2287

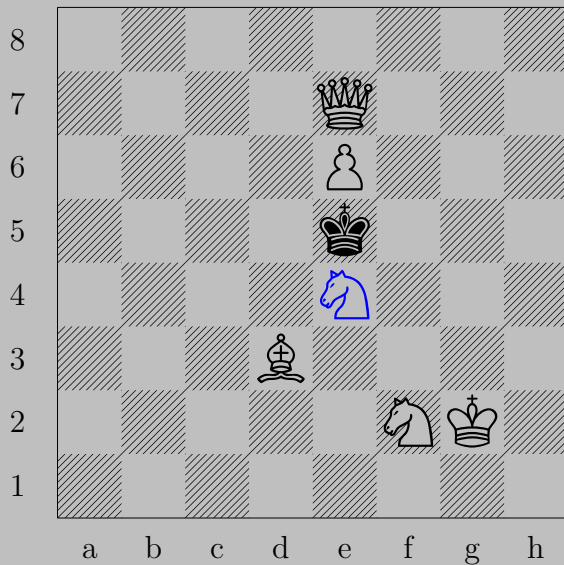


♠a8(♞), ♔a5
♚b6

2288



M. Locker, 1972



$\text{♞}(c3) e4$

If $\text{♞}d4$, $\text{♚}e5$. If $\text{♞}d5$, $\text{♚}d6$. If $\text{♞}f4$, $\text{♚}g5$. If $\text{♞}f5$, $\text{♚}f6$.

2289



M. Locker, 1973

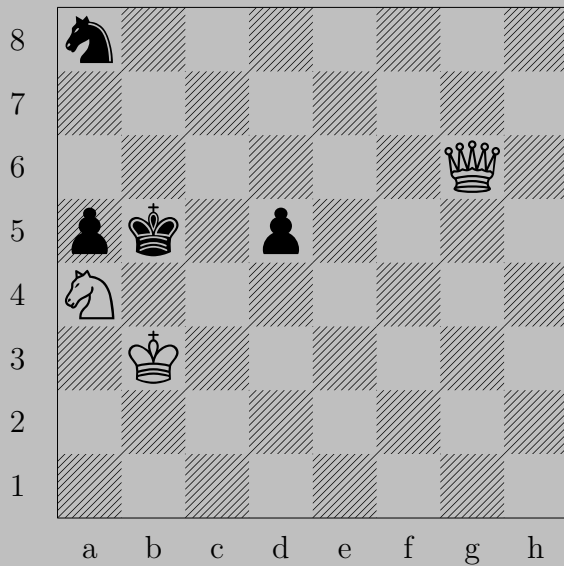


Qe2

If $\Delta f1(\text{Q})$, Wh2 . If $\Delta f1(\text{B})$, Wg2 .

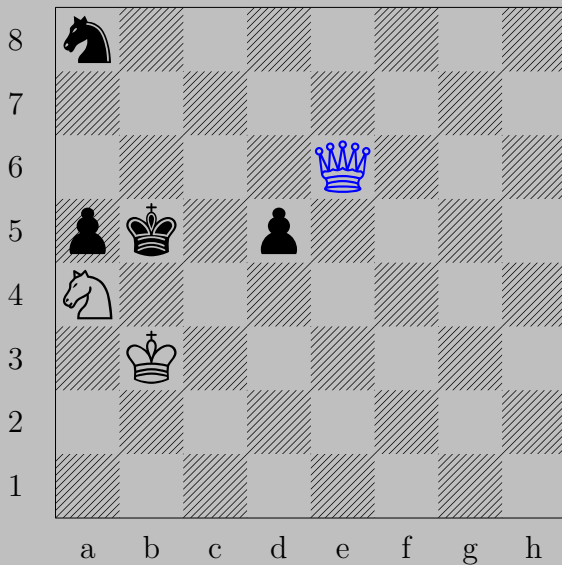
Otherwise, Wf1 .

2290



M. Locker, 1974

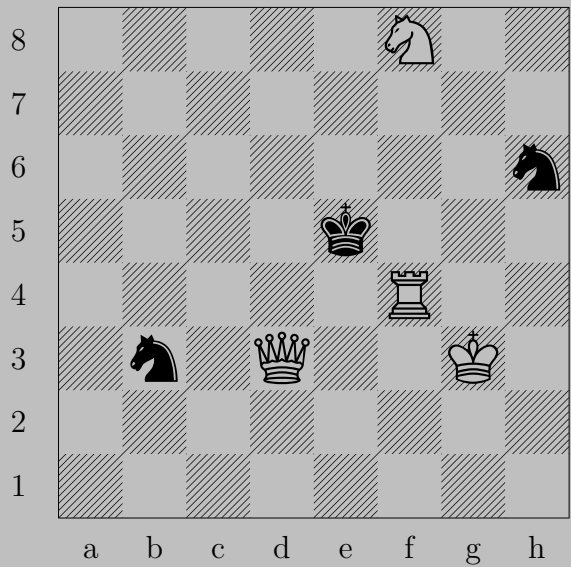
2290



♙e6

If ♘d4, ♙c4. If ♘c7, ♙b6. If ♘b6, ♙x b6.

2291



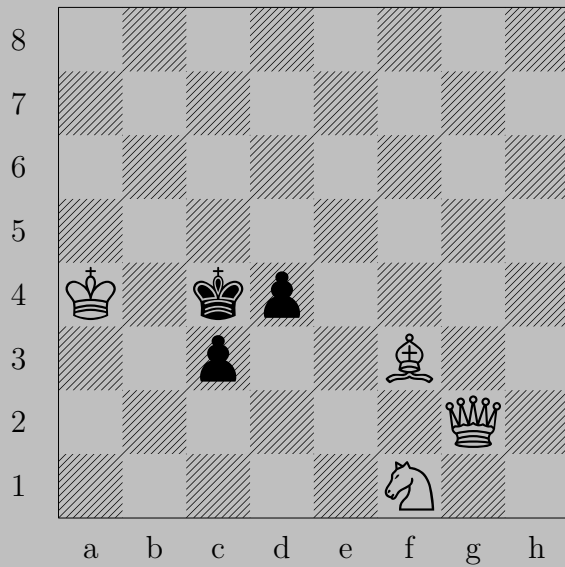
M. Locker, 1965



♔h4

If ♔xf4, ♕g6. If ♕f5+, ♖xf5. If ♕f7 or ♕g8 or ♕g4, ♖f5.

If ♕d4, ♕xd4. Otherwise, ♕d4.



2292



♖b7

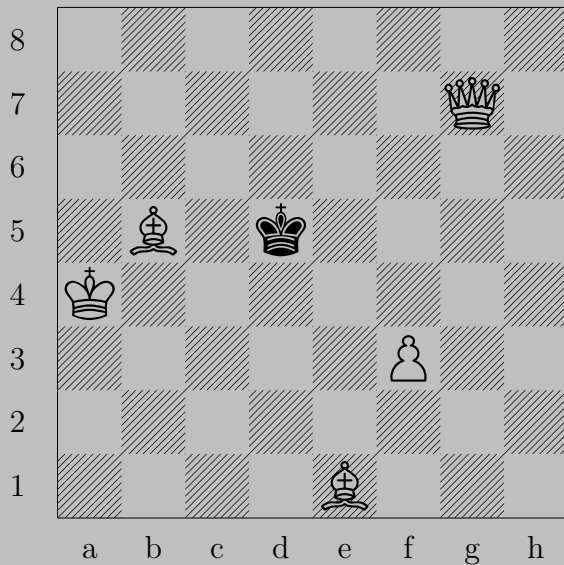
If ♔c5, ♚c6. If ♔d3, ♖a6. If ♙d3, ♚d5. If ♙c2, ♚xc2.

2293



M. Locker, 1967

2294



M. Locker - V. Melnichenko, 1968

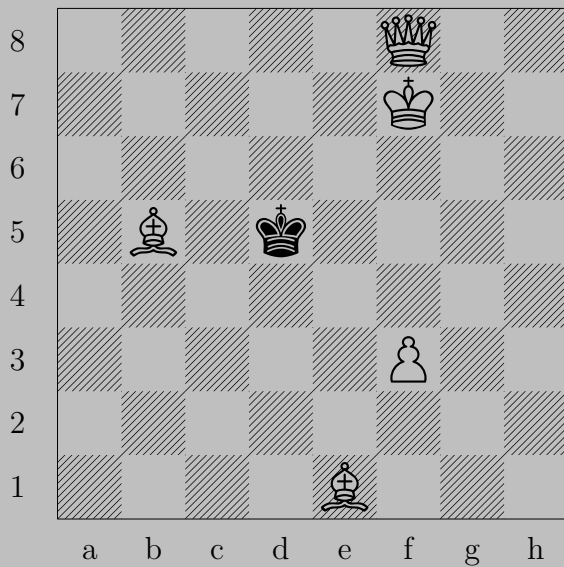
2294



♗c3

If ♔c5, ♕d4. If ♔d6, ♕e5. If ♔e6, ♕d7.

2295



M. Locker - V. Melnichenko, 1968

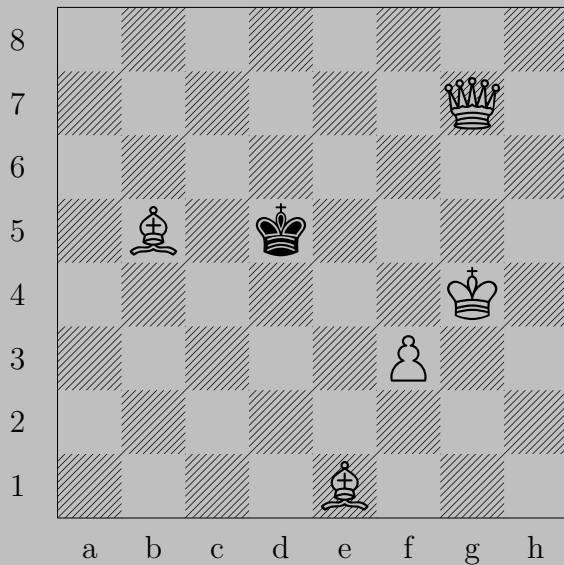
2295



♗d2

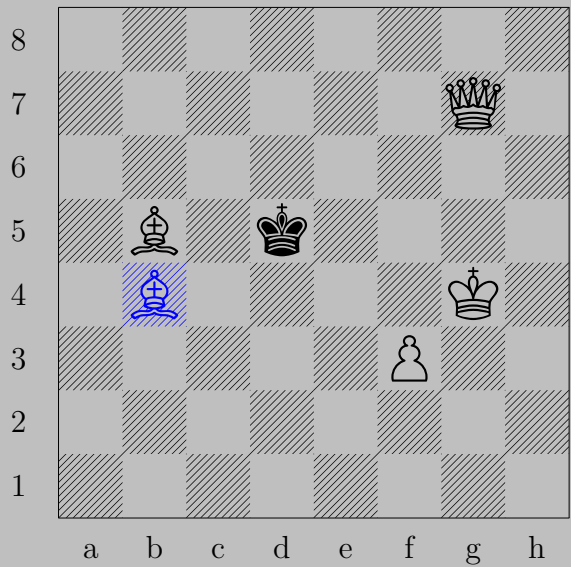
If ♔d4, ♚d6. If ♔e5, ♚c5.

2296



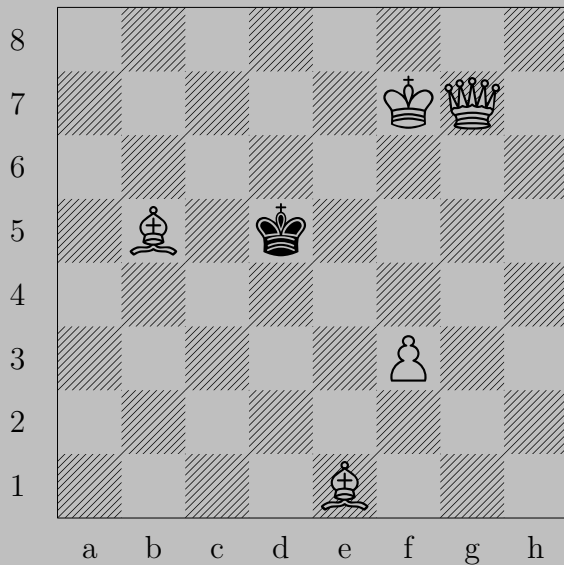
M. Locker - V. Melnichenko, 1968

2296



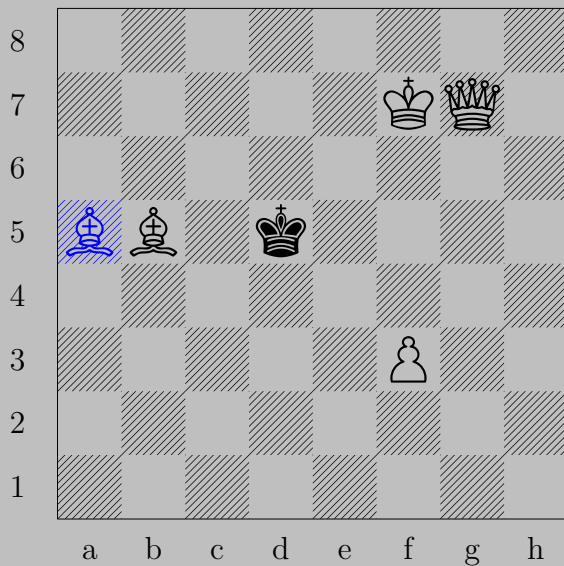
♖b4, ♔e6
♖c4

2297



M. Locker - V. Melnichenko, 1968

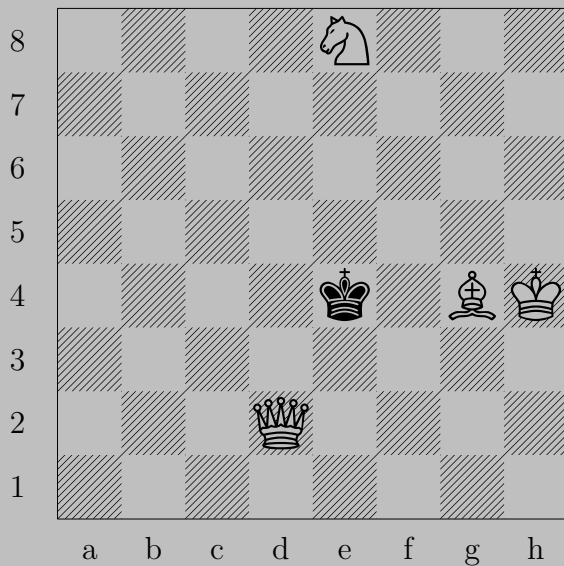
2297



♗a5

If ♔c5, ♕e5. If ♔d6, ♕d4.

2298



M. Locker - A. Sidorenko, 1969

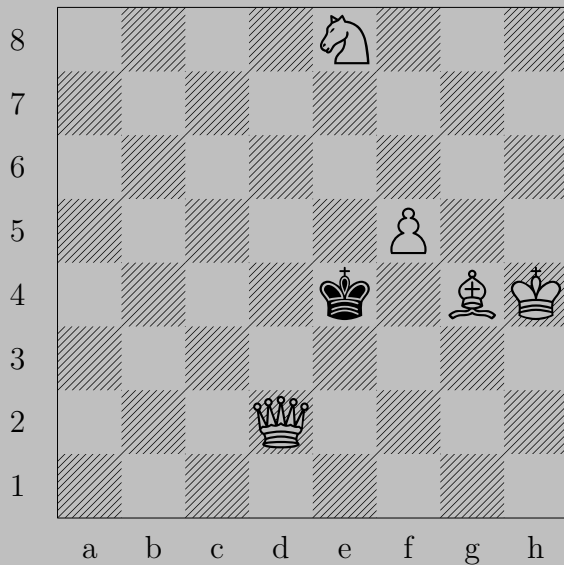
2298



♘e6

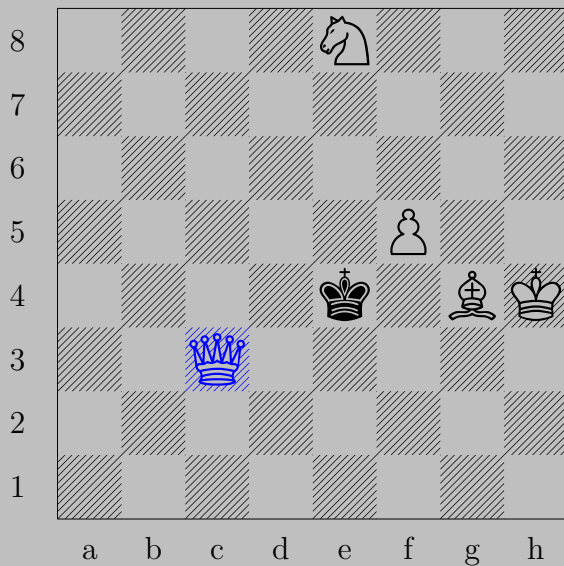
If ♔f3, ♘d5. If ♔e5, ♙e3.

2299



M. Locker - A. Sidorenko, 1969

2299



♚c3

if ♙d5, ♝f3. If ♚f4, ♚d4.

2300



M. Locker - A. Tuseev, 1955

2300



♘f3

If ♖b3, ♙e4. If ♚b3, ♙d1. If ♚d3, O-O-O.