

Chess Puzzles

2401-2500

Mate in Two

White to Move

László Polgár

Links

2401	2402	2403	2404	2405	2406	2407	2408	2409	2410
2411	2412	2413	2414	2415	2416	2417	2418	2419	2420
2421	2422	2423	2424	2425	2426	2427	2428	2429	2430
2431	2432	2433	2434	2435	2436	2437	2438	2439	2440
2441	2442	2443	2444	2445	2446	2447	2448	2449	2450
2451	2452	2453	2454	2455	2456	2457	2458	2459	2460
2461	2462	2463	2464	2465	2466	2467	2468	2469	2470
2471	2472	2473	2474	2475	2476	2477	2478	2479	2480
2481	2482	2483	2484	2485	2486	2487	2488	2489	2490
2491	2492	2493	2494	2495	2496	2497	2498	2499	2500

2401



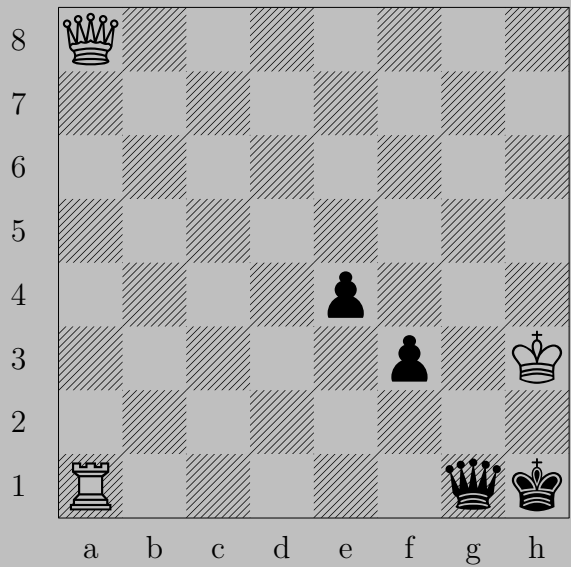
L. Merénye, 1926

2401



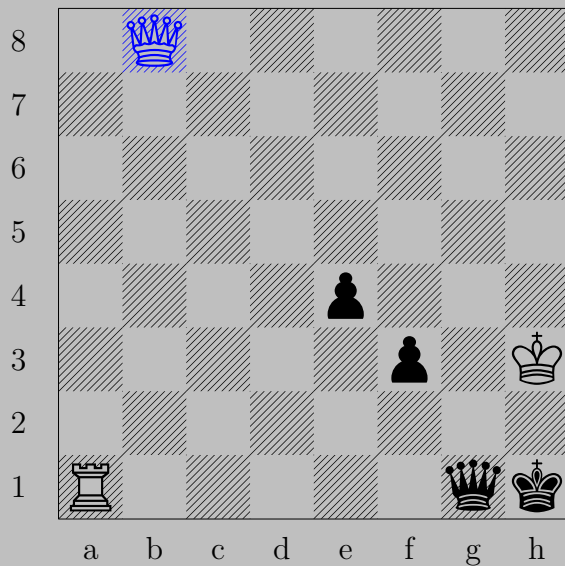
♔b6, ♔d6
♕d4

2402






L. Merénye, 1926

2402

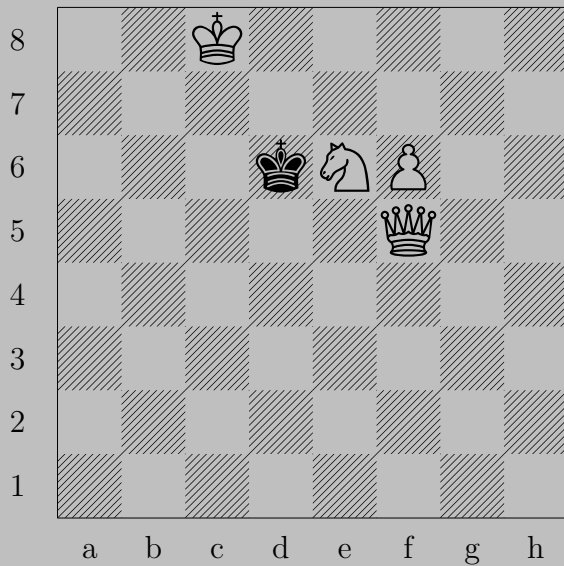


b8

If f1+, x f1.

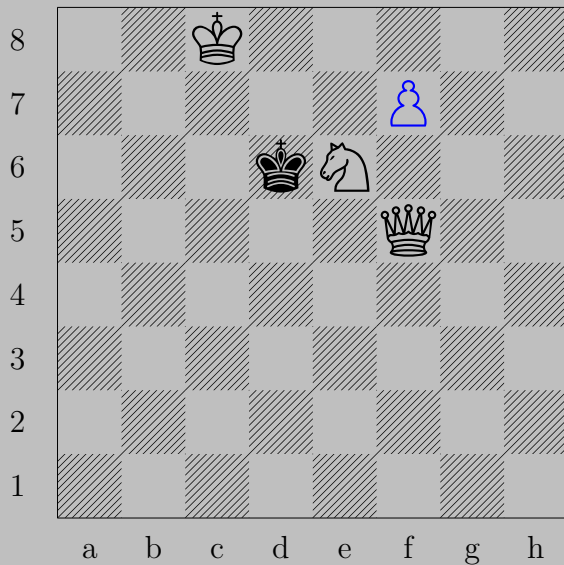
Otherwise, h2.

2403



L. Merénye, 1926

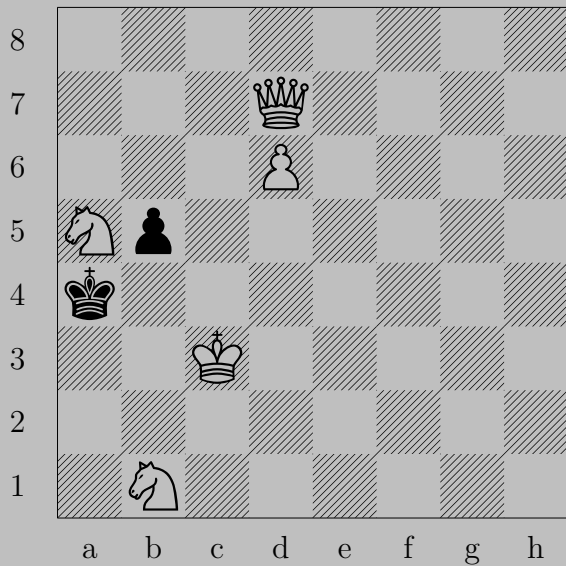
2403



♘f7

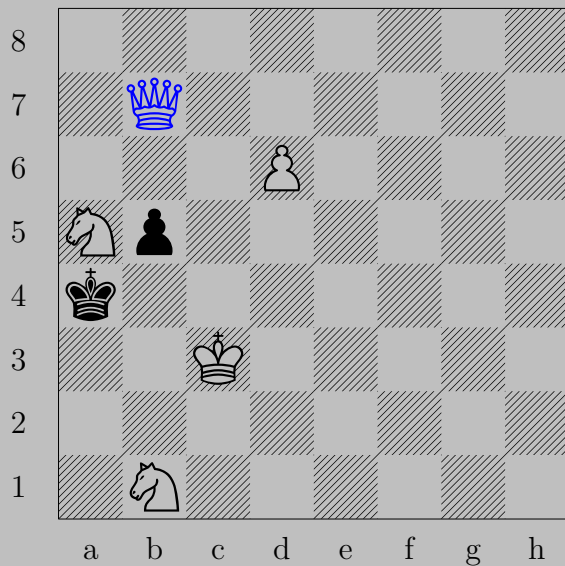
If ♔c6, ♚c5. If ♔e7, ♘f8(♚).

2404



L. Merénye, 1926

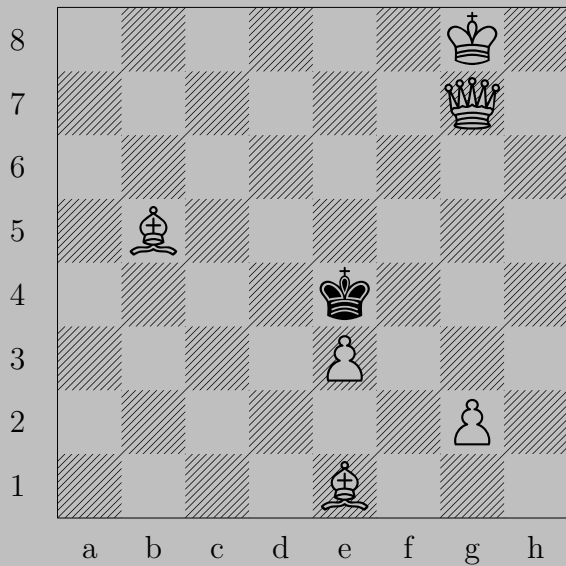
2404



♙b7

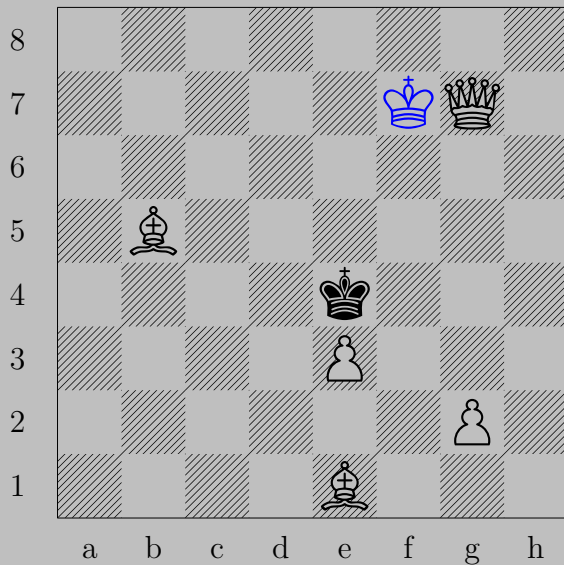
If ♖b4+, ♙×b4. If ♙×a5, ♙a7.

2405



V. Metlitzky, 1969

2405



♔f7

If ♔×e3, ♚e5. If ♔d5, ♚d4. If ♔f5, ♙d3.

2406



V. Metlitzky, 1972/73

2406



♔d2

If ♔d4, ♕f4. If ♔e5, ♕e3.

2407



V. Metlitzky, 1967

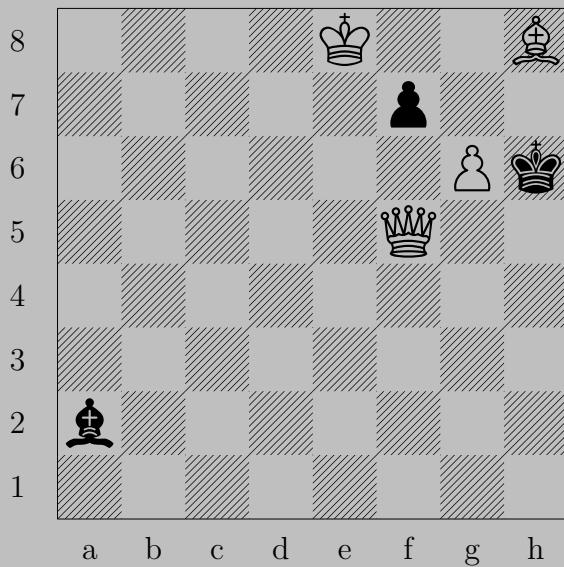
2407



♙f3

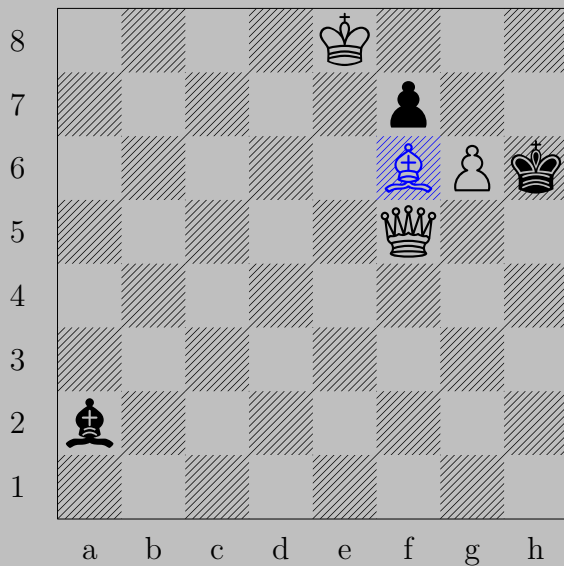
If ♚d4, ♘c6. If ♚d6, ♙e4. If ♚f5, ♙d5.

2408



F. M. Mihalek, 1979

2408



♙f6

If ♜xg6 , ♚h3 .

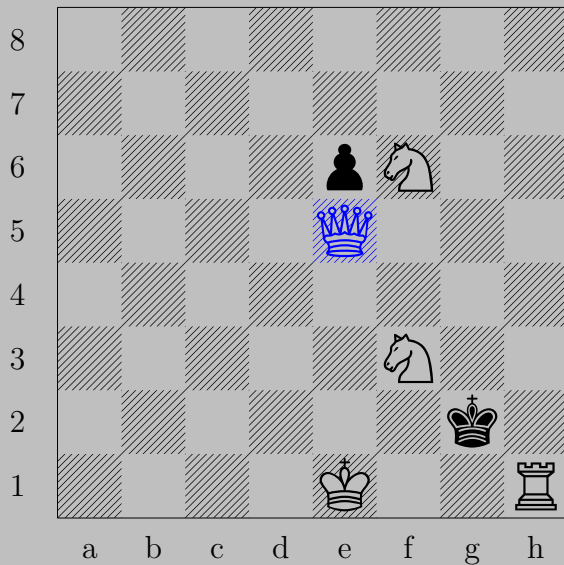
Otherwise, ♚g5 .

2409



A. Mihailov, 1983

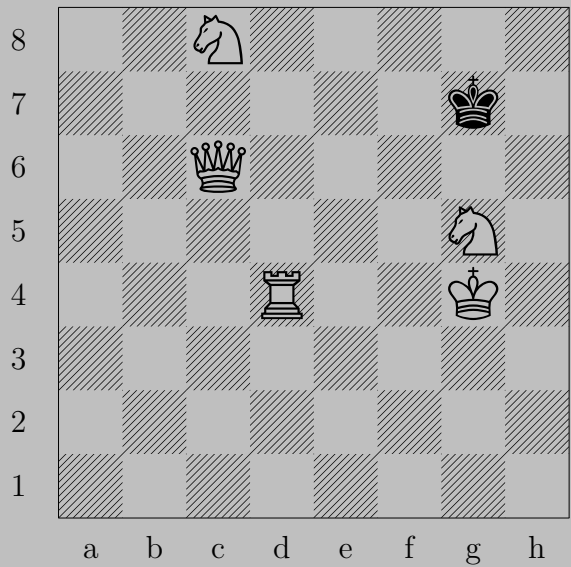
2409



♙e5

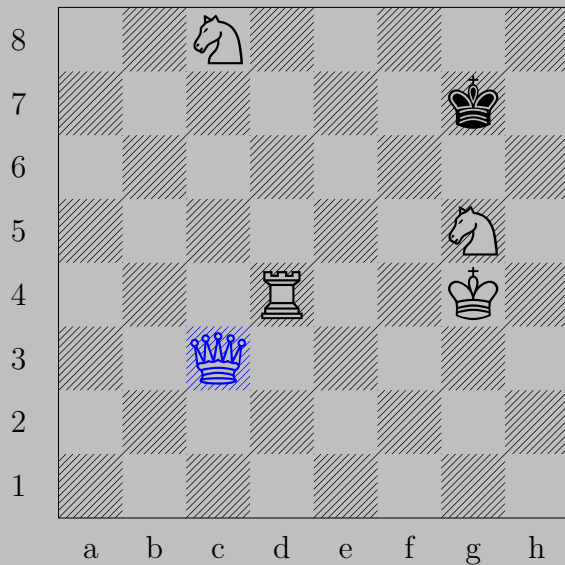
If ♔×h1, ♙h2. If ♔×f3, O-O.

2410



J. Minckwitz, 1875

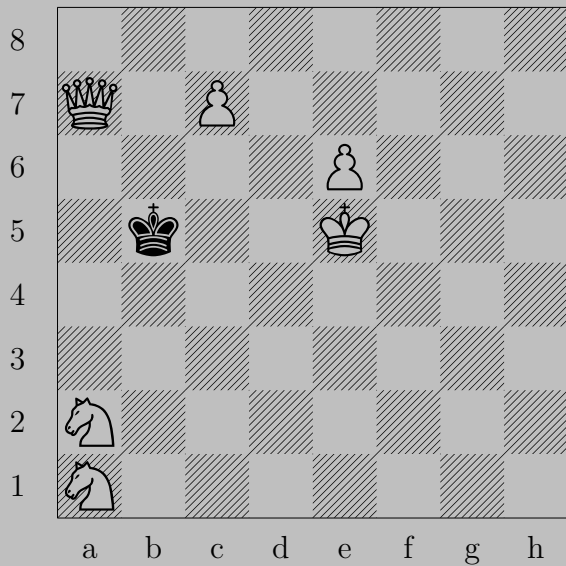
2410



♔c3

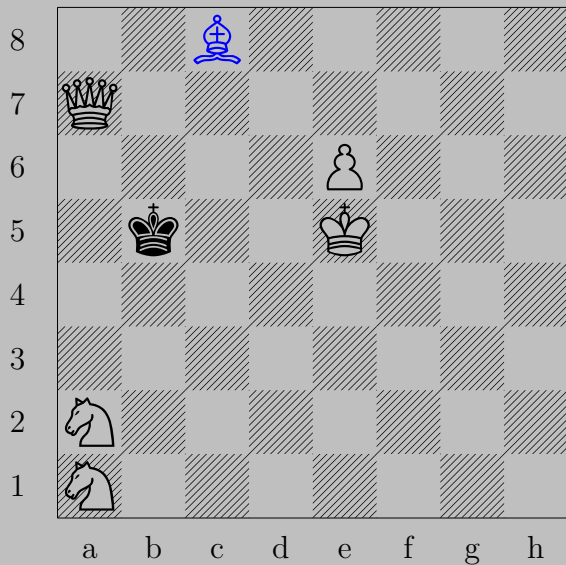
If ♔f6-h6, ♖d6. If ♔f8-h8, ♖d8.

2411



A. Mironov, 1982

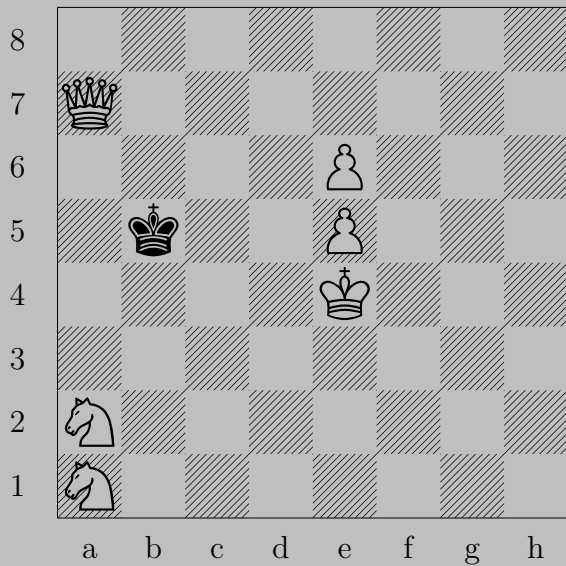
2411



$\triangleleft c8$ (♗)

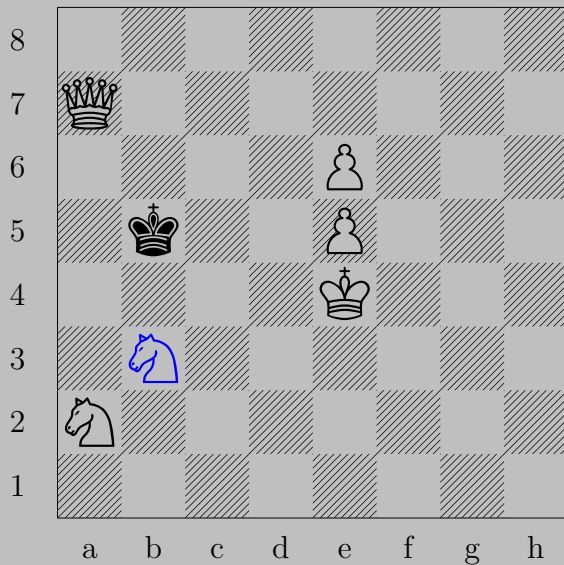
If ♔c6, ♘d7. If ♔c4, ♘a6.

2412



A. Mironov, 1982

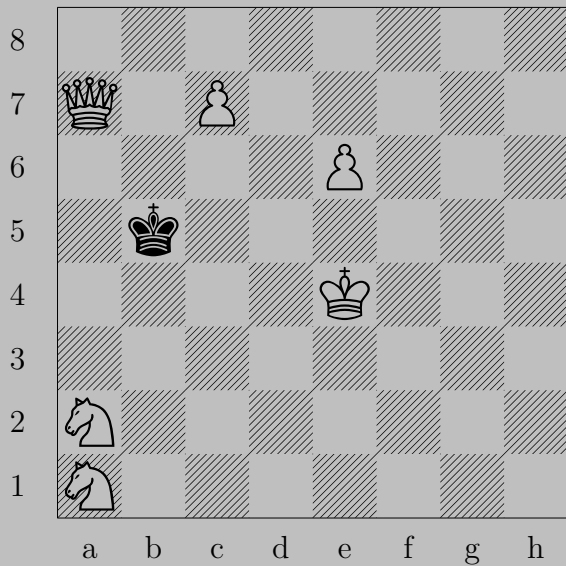
2412



♞b3

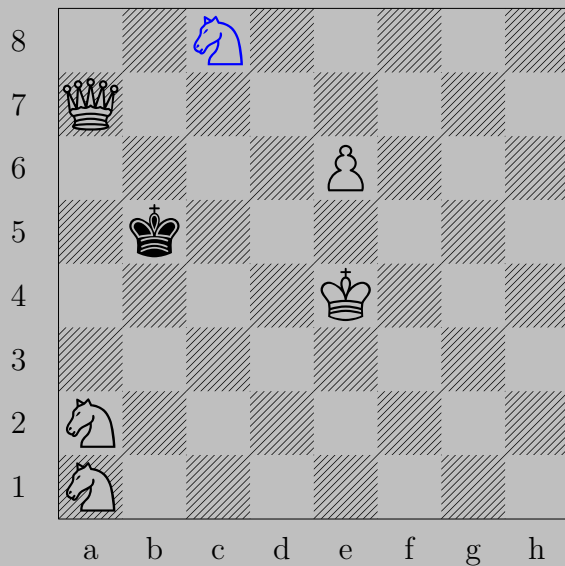
If ♚c6, ♞d4. If ♚c4, ♔a4.

2413



A. Mironov, 1982

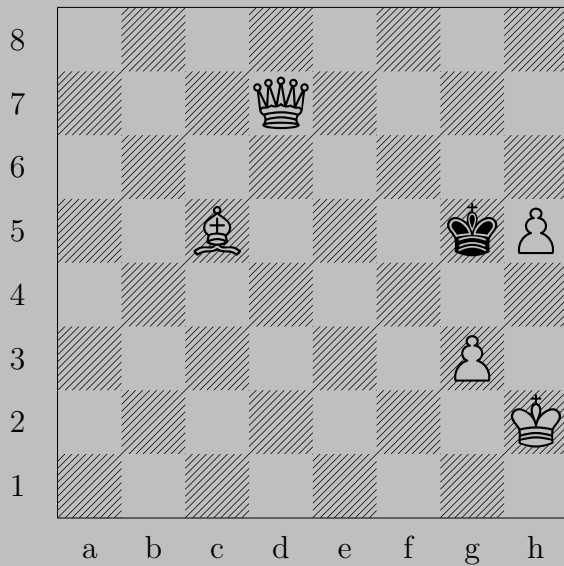
2413



$\triangleleft c8(\triangleleft)$

If $\triangleleft c6$, $\triangleleft b6$. If $\triangleleft c4$, $\triangleleft d6$.

2414



A. Miskolczy, 1911

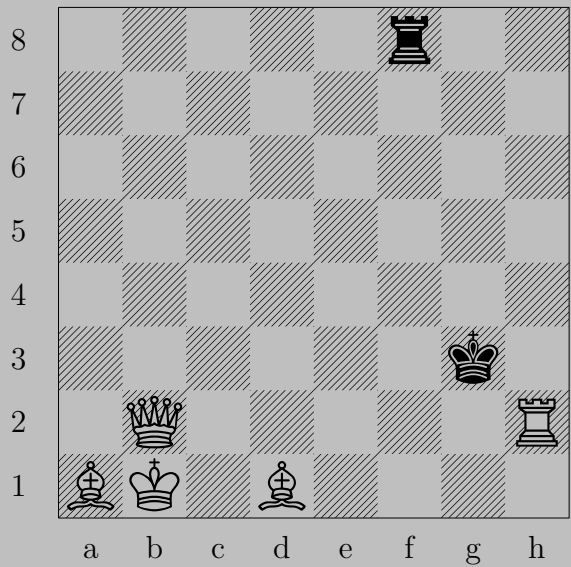
2414



\triangleleft g4

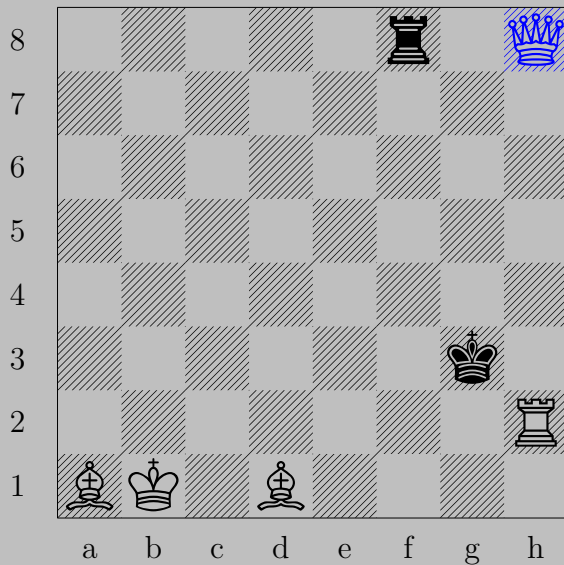
If \triangleleft f4, \triangleleft f5. If \triangleleft f6, \triangleleft e7. If \triangleleft h4, \triangleleft e7. If \triangleleft h6, \triangleleft e3.

2415



W. Moykin, 1973

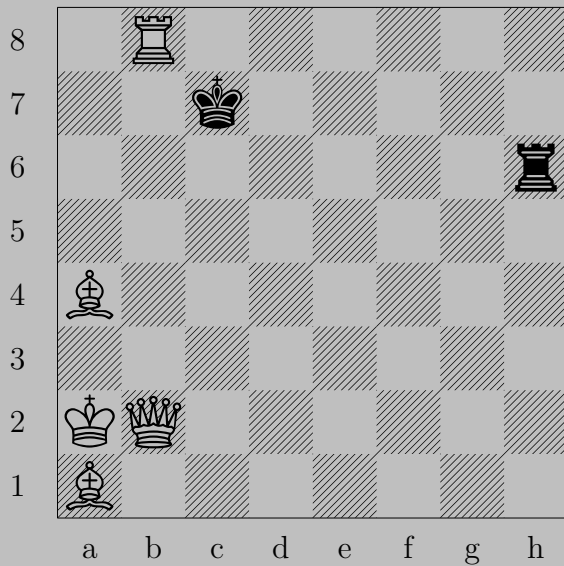
2415



♔h8

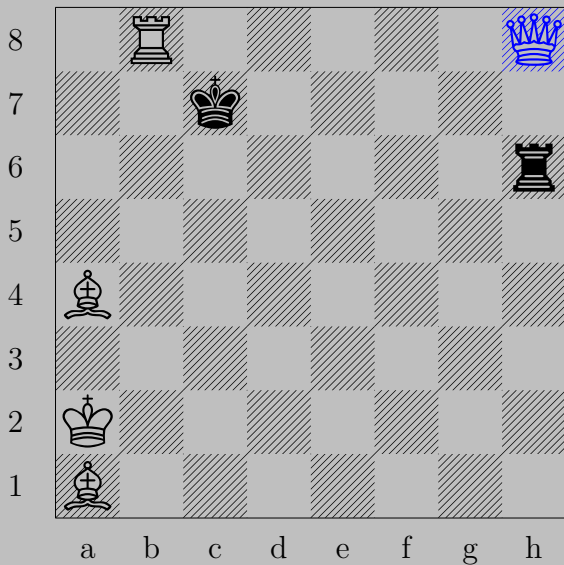
If ♖xh8, ♕e5. If ♖b8+, ♔xh8. If ♖f4, ♔h3. If ♔f4, ♔e5.
 Otherwise, ♔h4.

2416



V. Moykin, 1973

2416



♔h8

If ♖xh8, ♙e5. If ♖h2+, ♔xh2. If ♖d6, ♔c8. If ♙d6, ♔e5.

Otherwise, ♔d8.

2417



E. Montvid, 1893

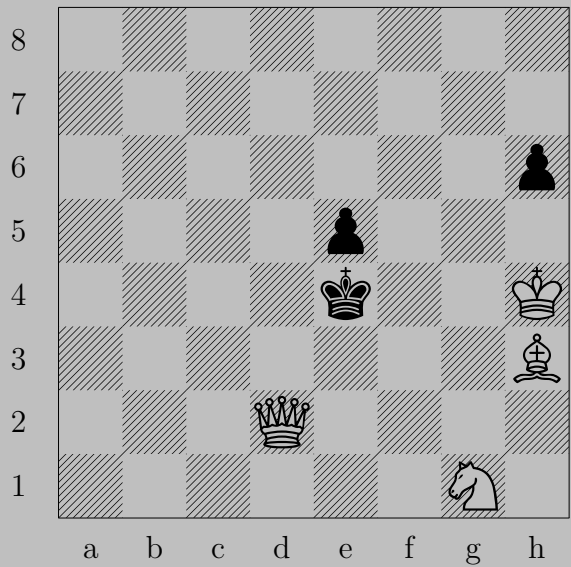
2417



$\text{N}h4$

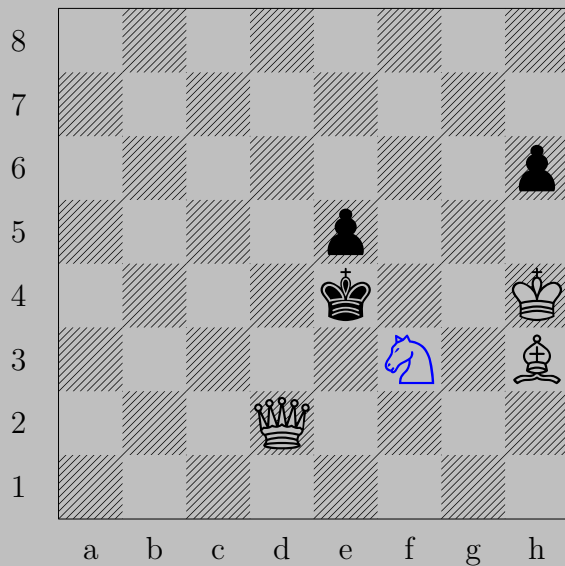
If $\text{K} \times h4$, $\text{Q}g4$. If $\text{B}h6$ or $\text{B}h5$, $\text{N}f3$.

2418



E. Montvid, 1901

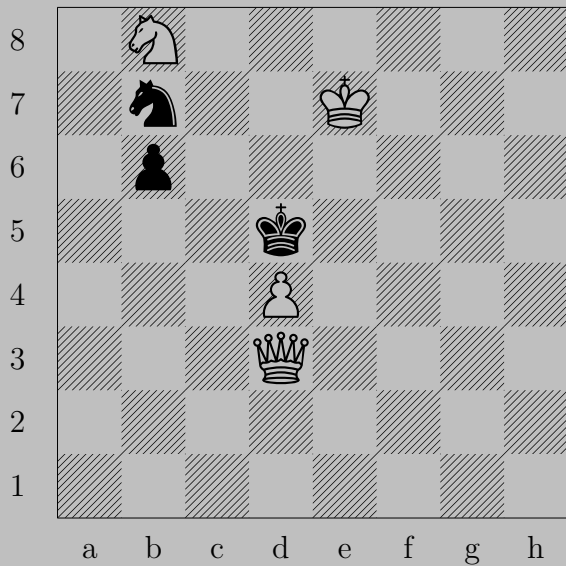
2418



♞f3

If ♔×f3, ♙g2. If ♖h5, ♞g5.

2419



E. Montvid, 1901

2419

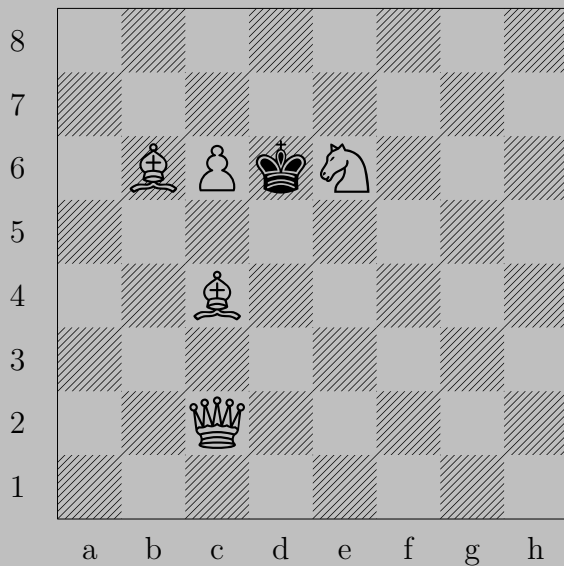


♞a6

If ♔c6 , ♙d5 .

Otherwise, ♞b4 .

2420



G. Mosiashvili, 1982

2420



♚g6

If ♙xc6, ♖c5. If ♙e5, ♙e7. If ♙e7, ♙e5.

2421



J. Mostert, 1960

2421



Nc5

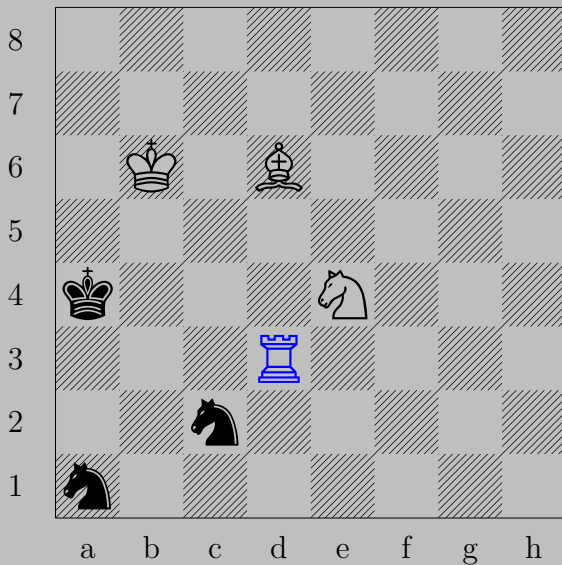
If Kxe5 , Qe6 . If Ke7 , Qh4 . If Kg7 , Qh8 . If Kg5 , Ne4 .

2422



G. Mott-Smith, 1937

2422

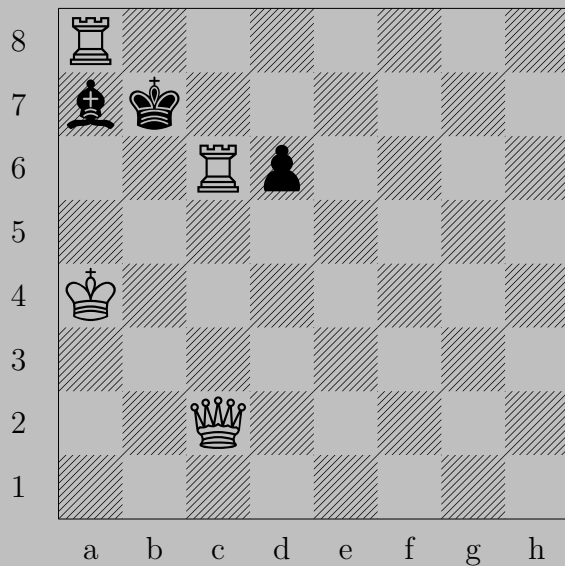


♖d3

If ♜b3 , ♜c3 . If ♜b4 , ♜c5 .

If ♜a3 , ♜xa3 . Otherwise, ♜a3 .

2423



G. Mott-Smith, 1942

2423



$\text{R}a6$

If $\text{K} \times a8$, $\text{Q}c8$. If $\text{K}c5$, $\text{Q}h7$.

Otherwise, $\text{Q}c6$.

2424



G. Mott-Smith, 1937

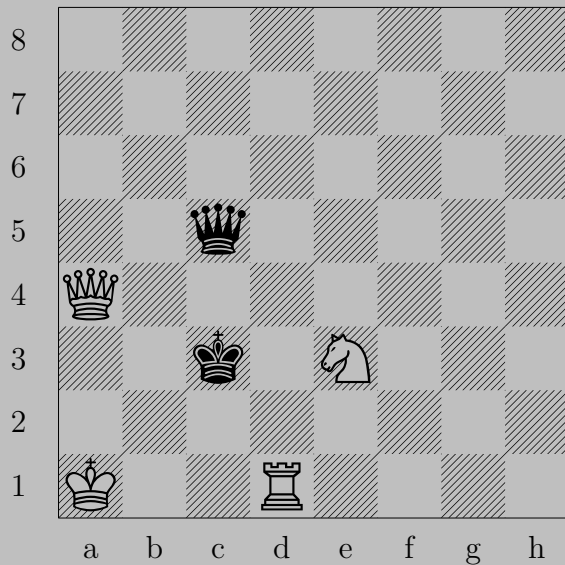
2424



♙e1

If ♖xh2+, ♘h3. If ♚xh2, ♙f2. If ♗f3, ♙g3.

2425



G. Mott-Smith, 1939

2425

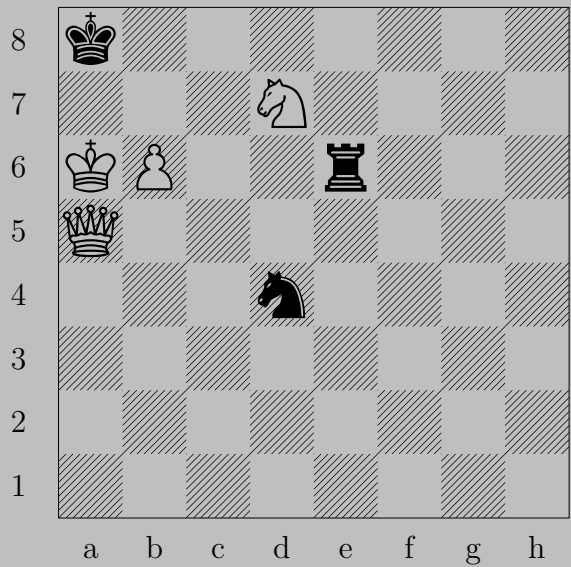


♔a2

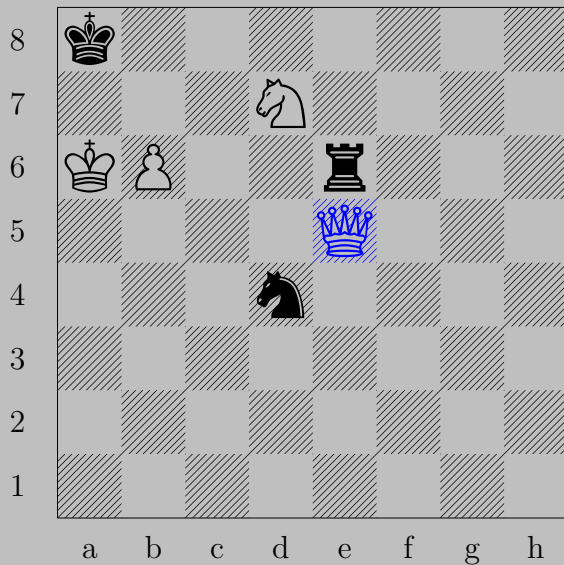
If ♔a3+, ♔×a3. If ♔c4+, ♔×c4. If ♔d5+, ♞×d5. If ♔a5, ♔×a5.

If ♔b4, ♔c2. If ♔b5, ♔d4. If ♔b6 or ♔a7, ♞d5. Otherwise, ♔b3.

2426



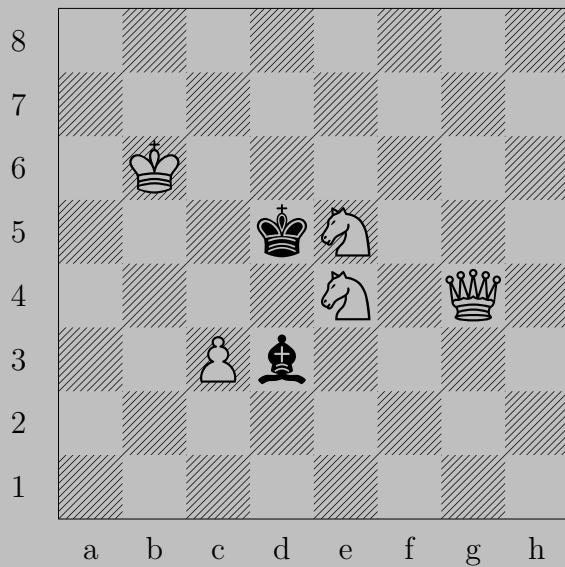
G. Mott-Smith, 1932



♔e5

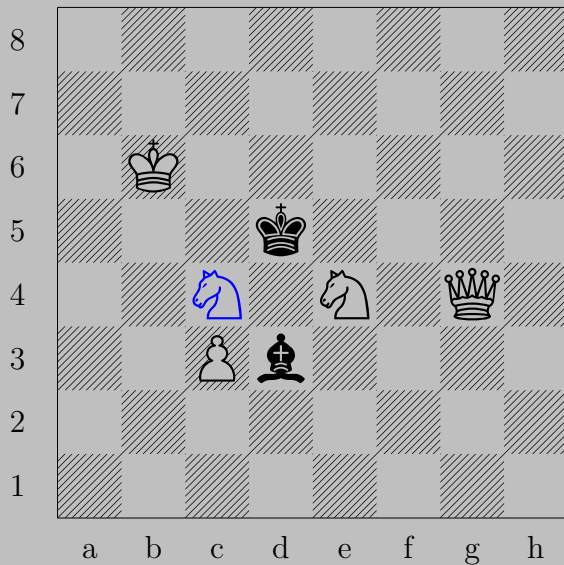
If ♖x6+, ♘x6. If ♖xe5 or ♘c6 or ♖e8, ♙b7. If ♖d6, ♔e8.
Otherwise, ♔b8.

2427



G. Mott-Smith, 1937

2427



Nc4

If Qxc4 , Qf5 . If Qxe4 or Kxc4 , Qg8 .

Otherwise, Nf6 .

2428



G. Mott-Smith, 1937

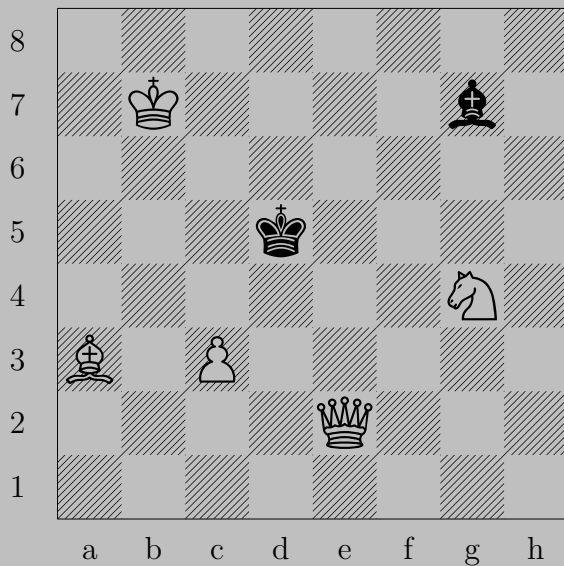
2428



♞e4

If ♙×e4 or ♙e6, ♙c6. If ♙×d6, ♞f6. If ♙e5, ♚d3.

2429



G. Mott-Smith, 1934

2429

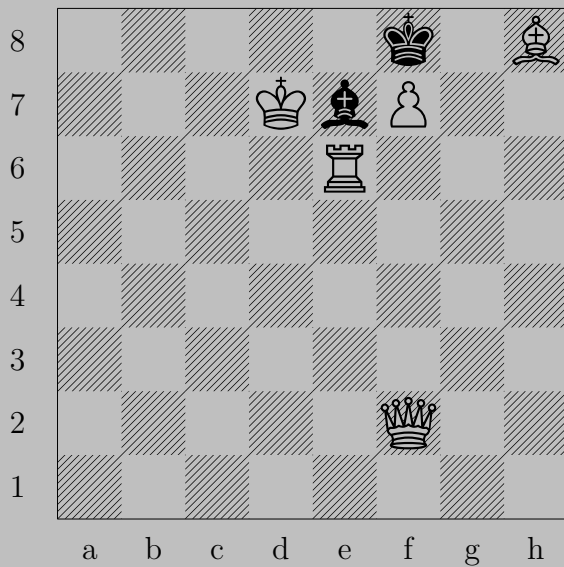


♞f2

If ♞d4 , ♟c4 . If ♞e5 , ♞a2 .

Otherwise, ♞e4 .

2430



G. Mott-Smith, 1937

2430

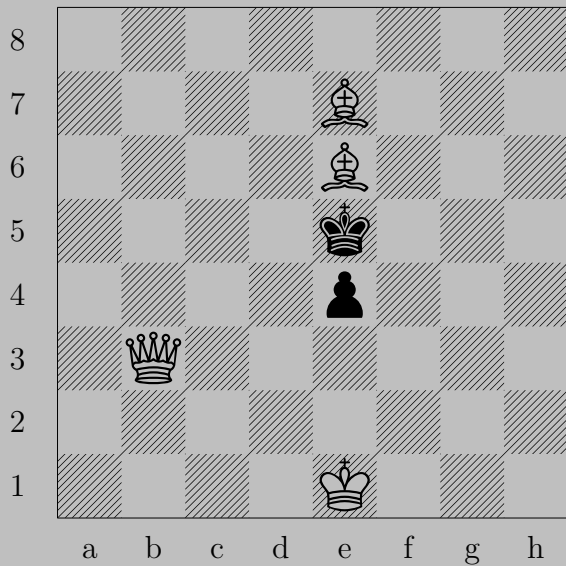


♙a2

If ♔×f7, ♖f6.

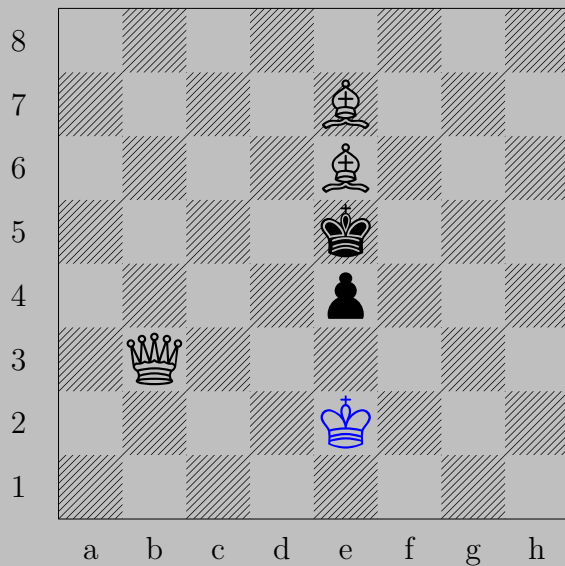
Otherwise, ♖e8.

2431



J. Miller, 1914

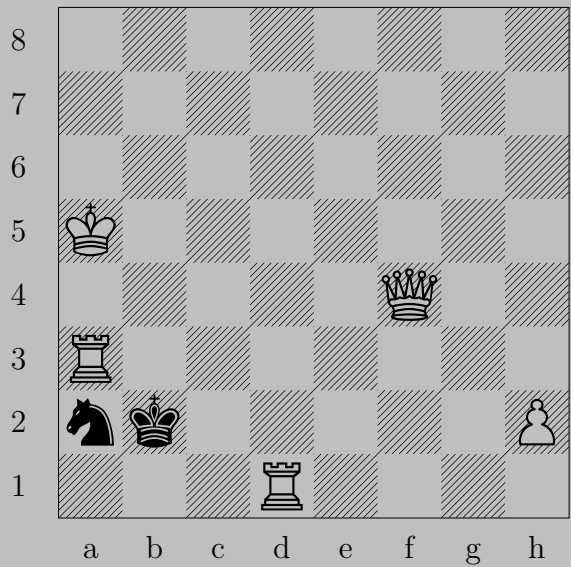
2431



♔f2

If ♔d4, ♚b2. If ♔f4, ♚b8. If ♖e3, ♚xe3.

2432



I. Murarasu, 1988

2432

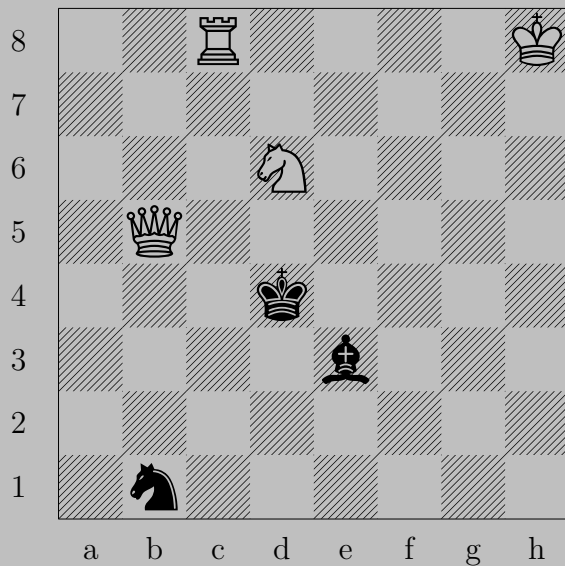


♖a1

If ♔×a3, ♕b4.

If ♞c1, ♕×c1. Otherwise, ♕c1.

2433



M. Myllyniemi, 1954

2433

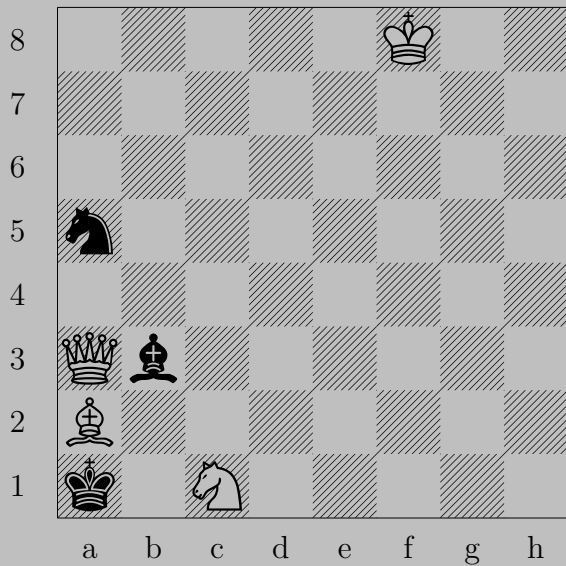


♙f5

If ♘d2, ♘b5. If ♘c3, ♖c4.

Otherwise, ♙e4.

2434



E. Myhre, 1928

2434

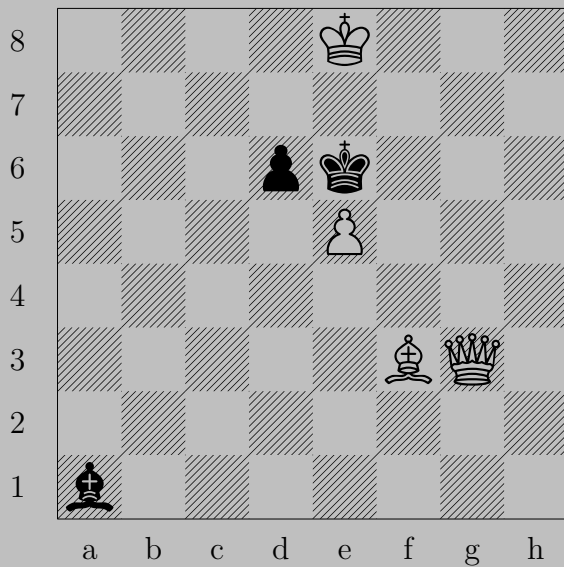


♔g7

If ♘xa2, ♙xa2. If ♘c4 or ♘c6 or ♘b7, ♘xb3.

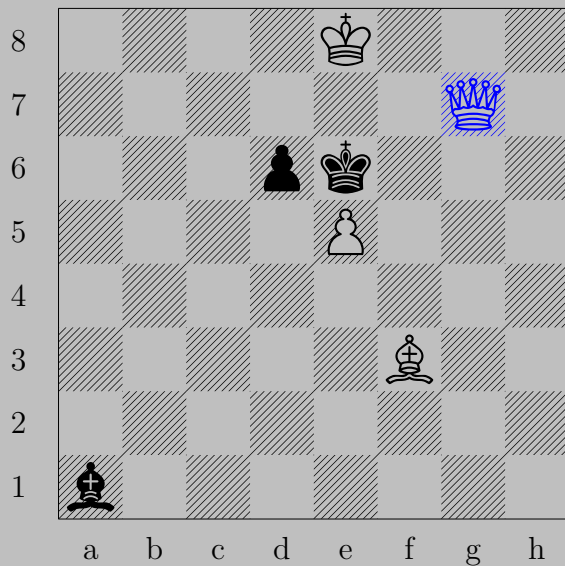
Otherwise, ♙c3.

2435



M. Myllyniemi, 1981

2435



♔g7

If ♖xe5, ♔g6. If ♙xe5, ♔f7.

Otherwise, ♔f6.

2436



M. Myllyniemi, 1970/71

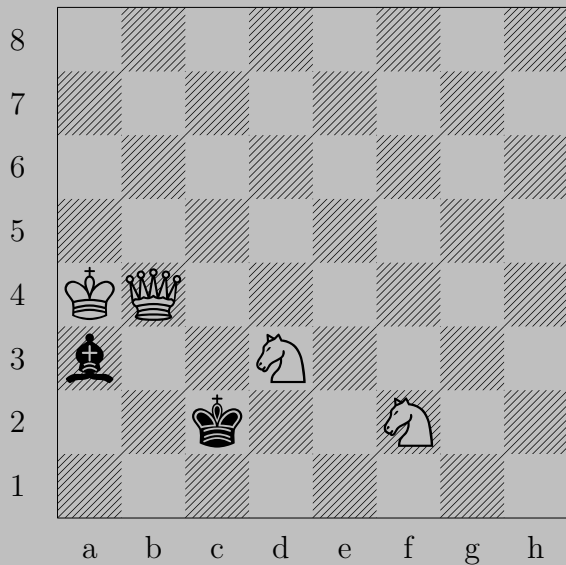
2436



♖a2

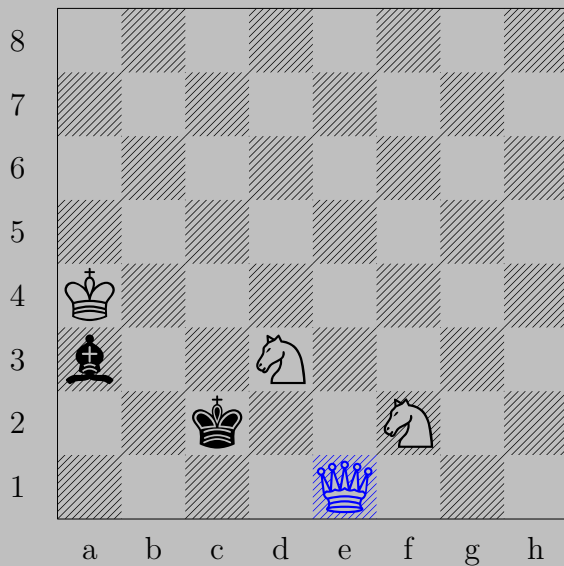
If ♔b1 (♔), ♖x d2 . If ♔b1 (♗), ♕c2 .

2437



M. Myllyniemi, 1965

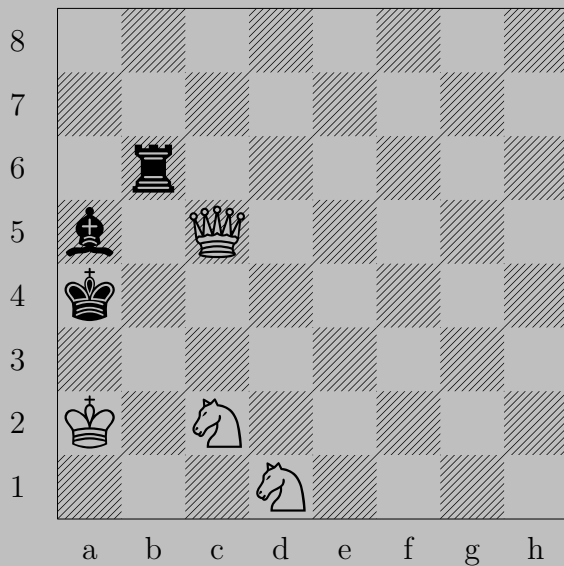
2437



♙d1

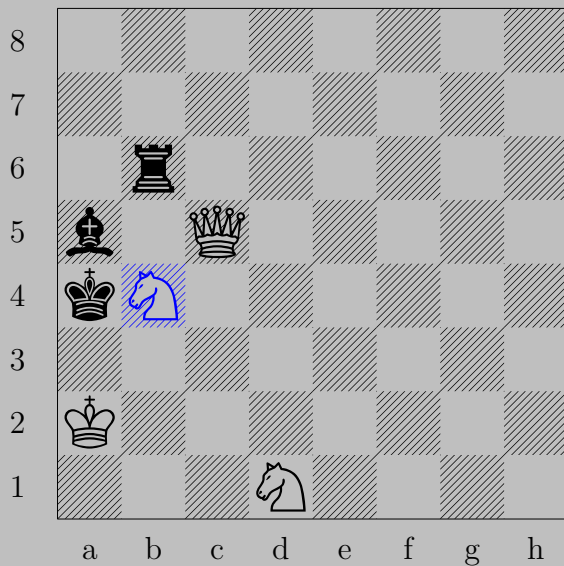
If ♘b2, ♚d1. If ♘c1, ♚xc1. If ♘b4-f8, ♚c1.

2438



M. Myllyniemi, 1957

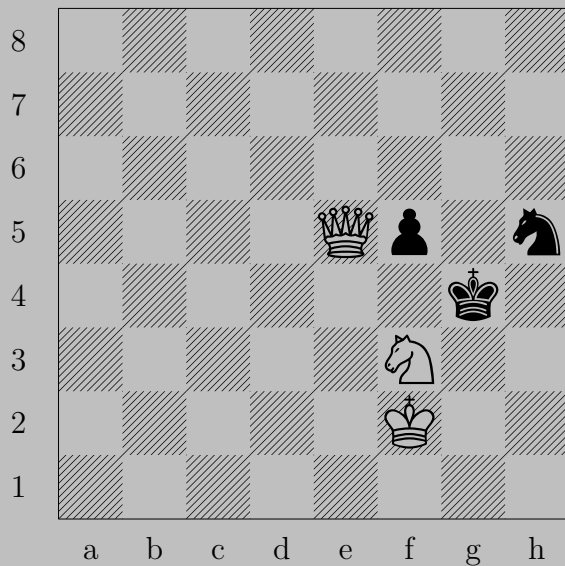
2438



♞b4

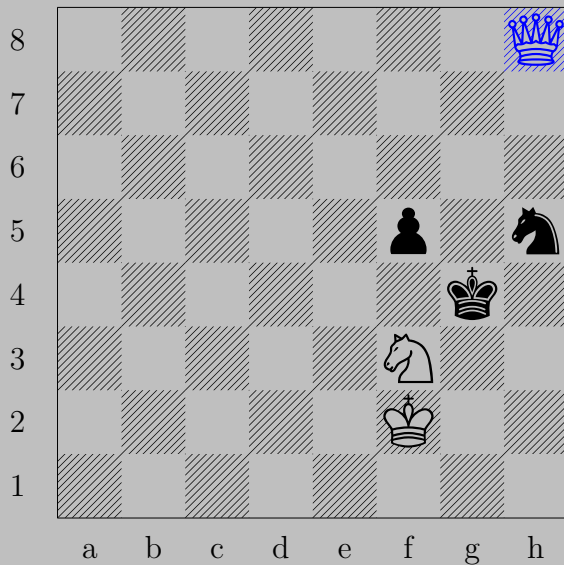
If ♜x b4 , ♞b2 . Otherwise, ♞c3 .

2439



N. Nadezhdin, 1969

2439

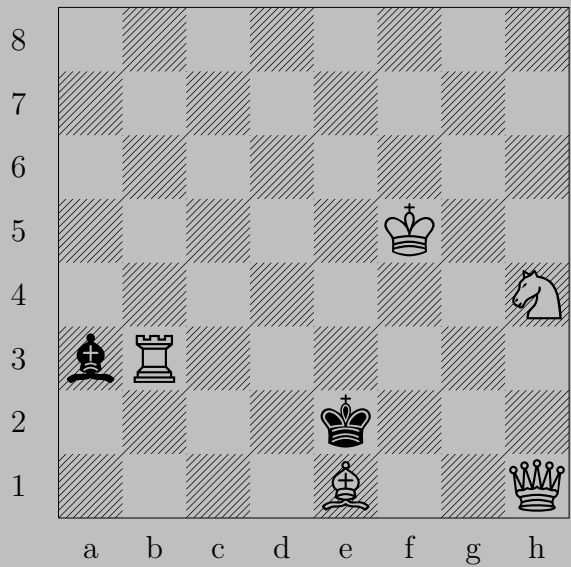


♔h8

If ♕f4, ♔d8. If ♔f4, ♕d4. If ♔h3, ♕xh5.

Otherwise, ♕h4.

2440



E. Nogovitzin, 1974

2440

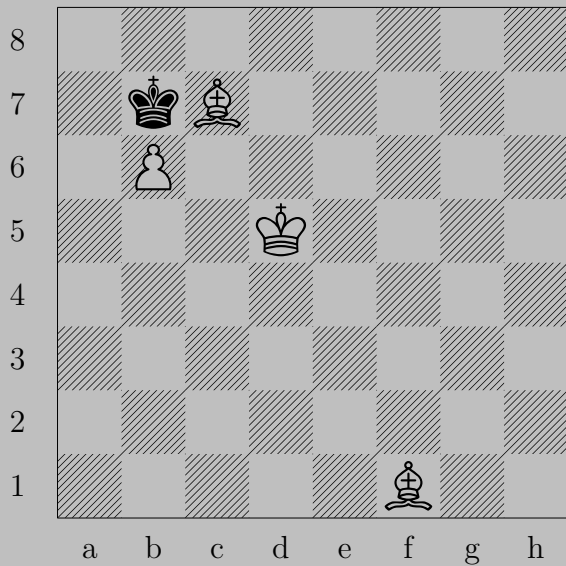


♞c3

If ♞f2 , ♚e1 . If ♞d3 , ♚e4 .

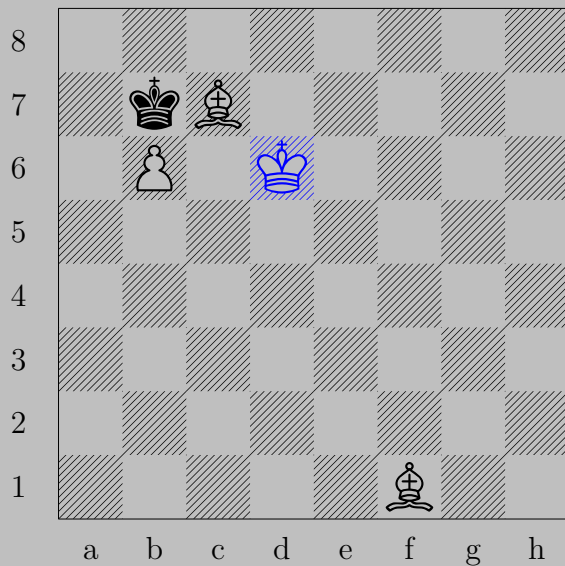
Otherwise, ♚f3 .

2441



B. Nazarov, 1982

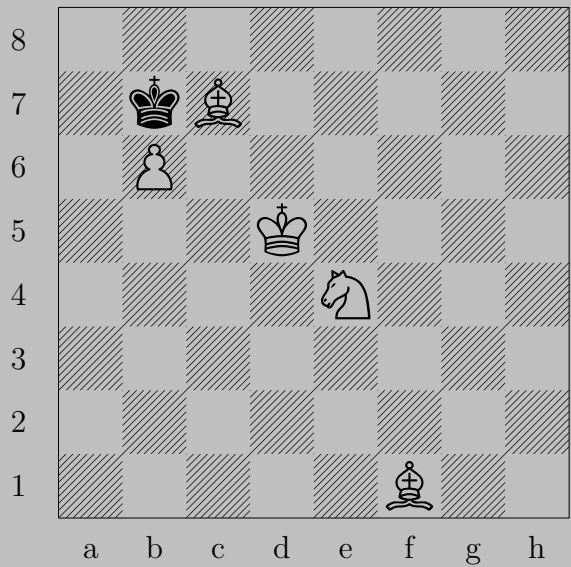
2441



♔d6

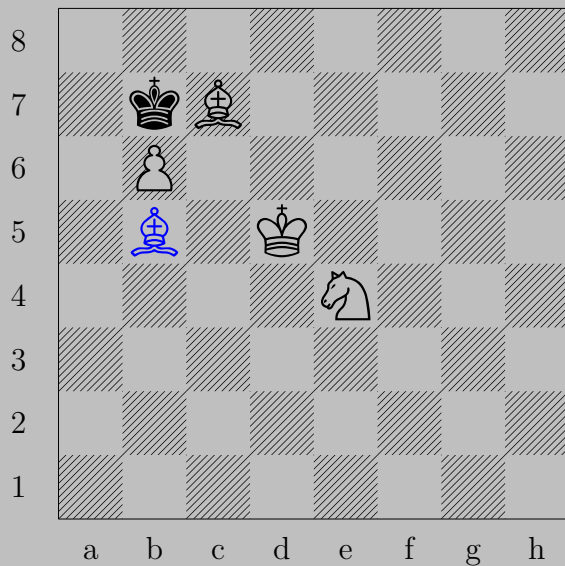
If ♖a8, ♘g2. If ♖c8, ♘a6.

2442



B. Nazarov, 1982

2442



♗b5

If ♔a8, ♗c6. If ♔c8, ♘d6.

2443



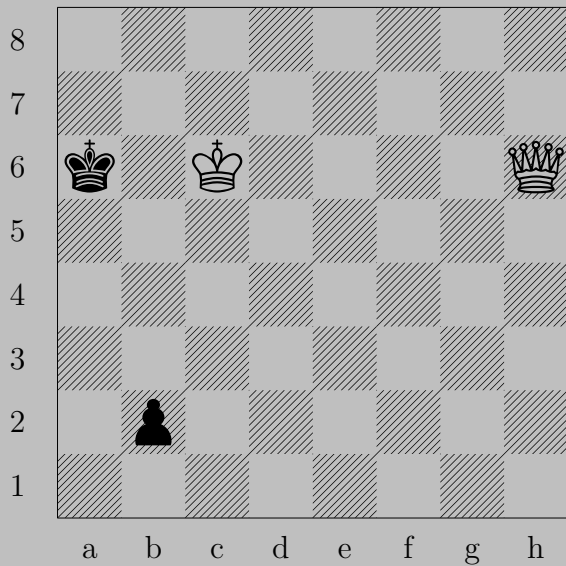
V. Negodayev, 1971



♔g5

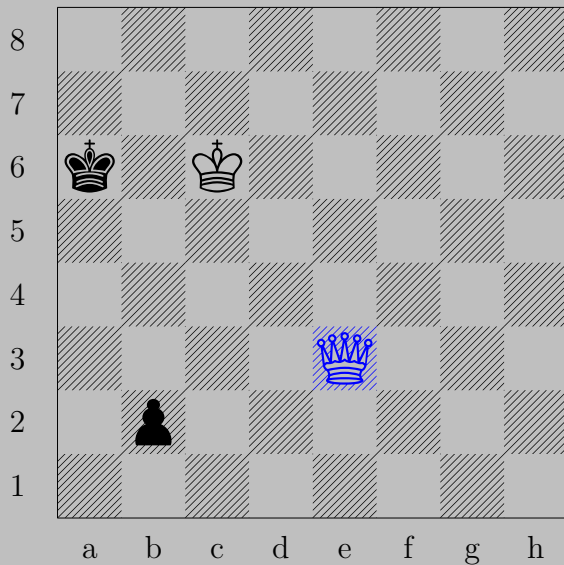
If ♖f2, ♕g2. If ♜f1, ♙xf1. If ♜g4, ♙xg4.

2444



O. Nemo, 1929

2444



♔e3

If ♚b1(♔) or ♙a5, ♚a3. If ♚b1(♗), ♚b6.

2445



V. Nestorescu, 1959

2445



♔g1

If ♔a2, ♔a7.

If ♞d4, ♔xd4. Otherwise, ♔d4.

2446



Gy. Neukomm, 1928

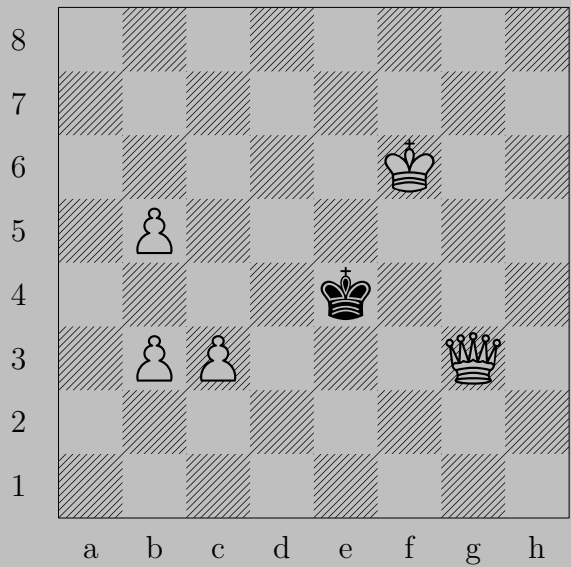
2446



♔d5

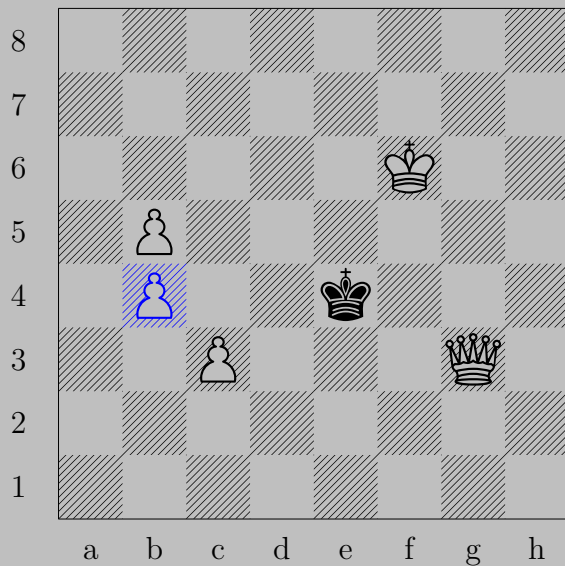
If ♖b5, ♕a3. If ♔b3 or ♔c3, ♕c4.

2447



Gy. Neukomm, 1929

2447



♖b4, ♔d5
♚d3

2448



Gy. Neukomm, 1930

2448

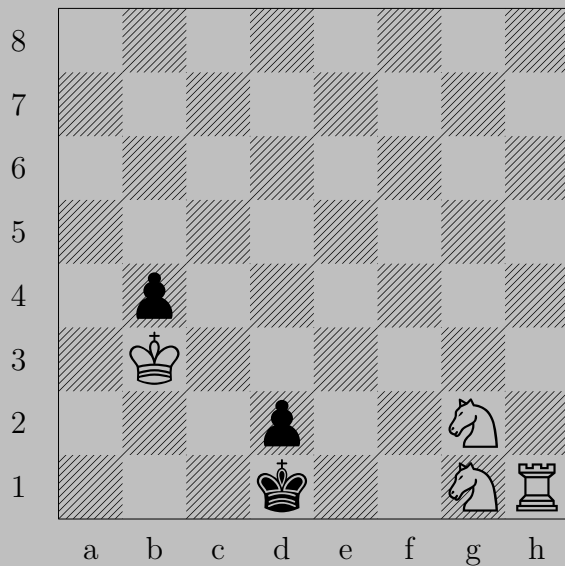


Nc5

If Ra4 , Qd2 .

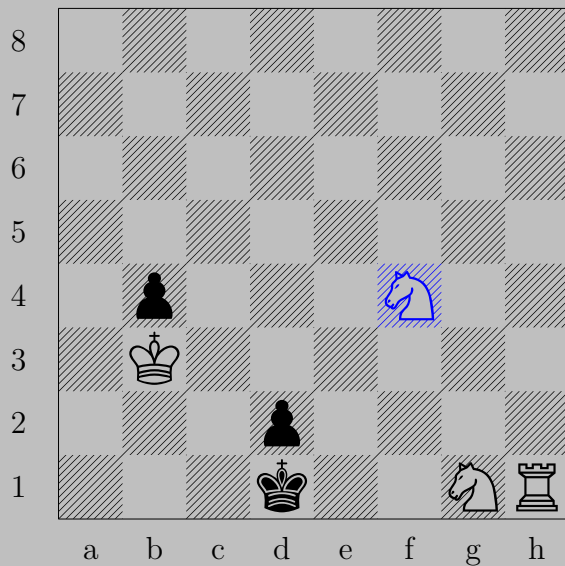
Otherwise, Qb3 .

2449



Gy. Neukomm, 1931

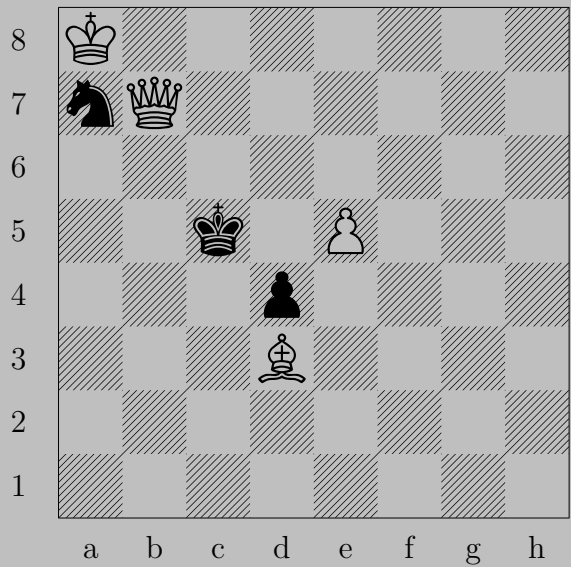
2449



Nf4

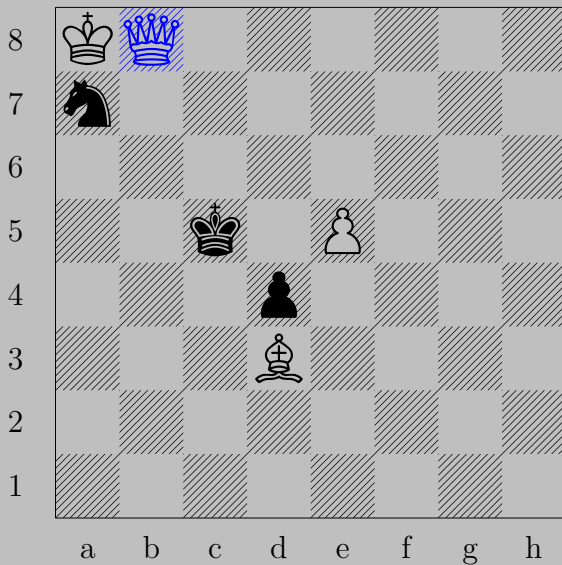
If Kc1 , N(g1) e2 . If Ke1 , N(g1) h3 .

2450



Gy. Neukomm, 1931

2450

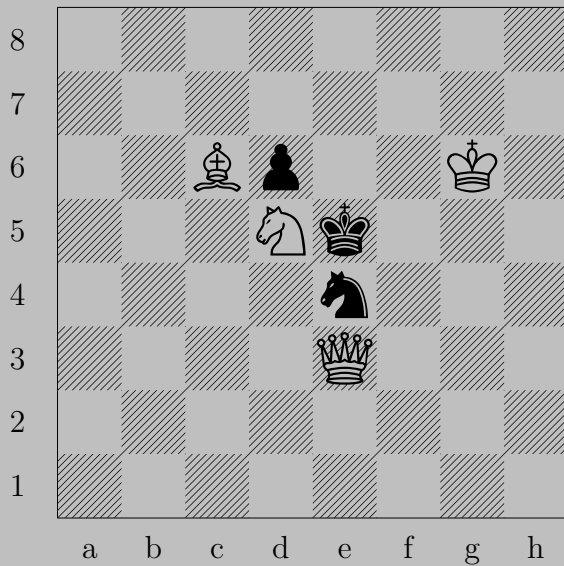


♔b8

If ♔c6 or ♔d5, ♔d6.

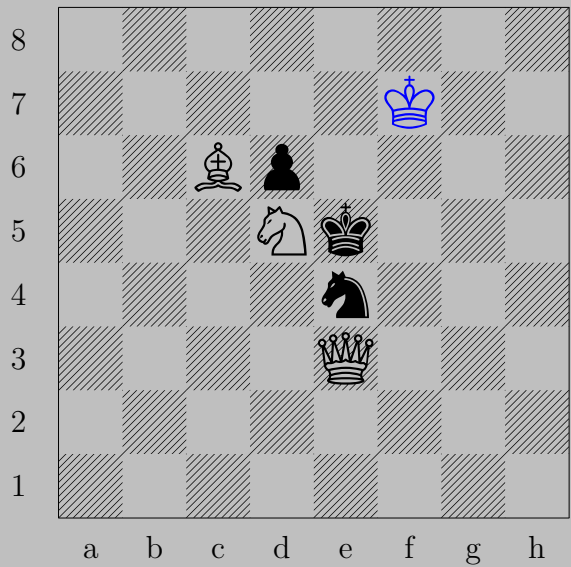
If ♘b5, ♔x♘b5. Otherwise, ♔b5.

2451



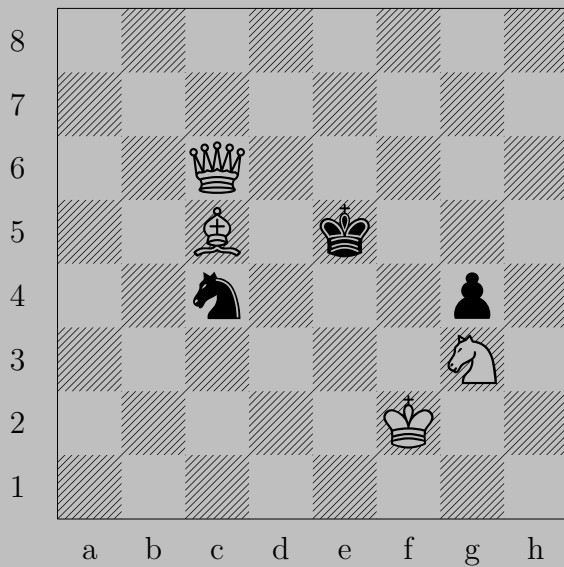
Gy. Neukomm, 1927

2451



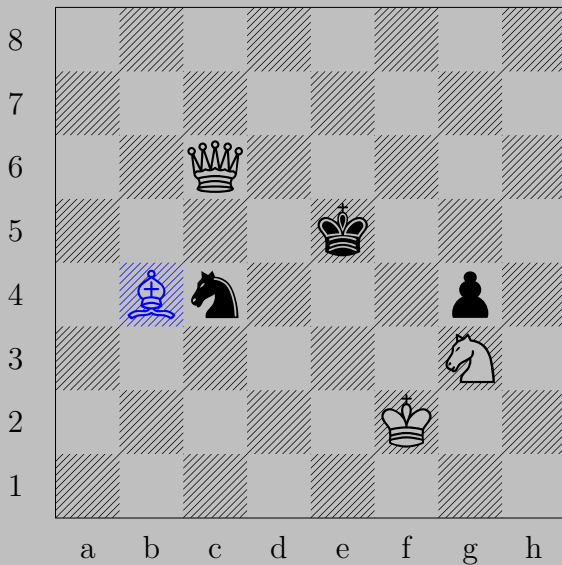
♔f7, ♔f5
♚f4

2452



Gy. Neukomm, 1931

2452

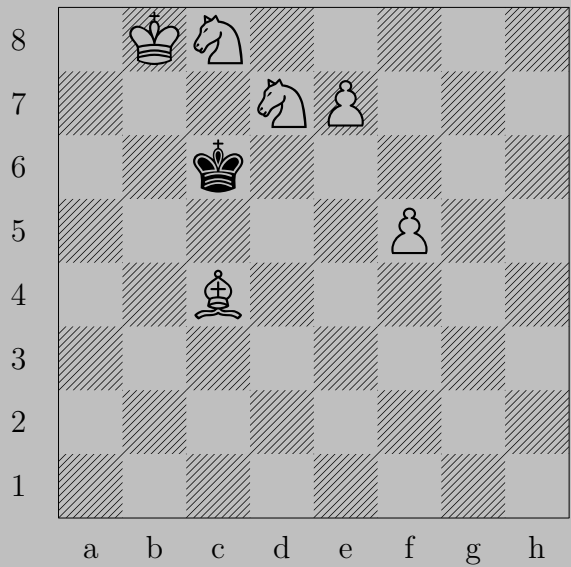


♗b4

If ♔d4 , ♚e4 . If ♔f4 , ♚f6 .

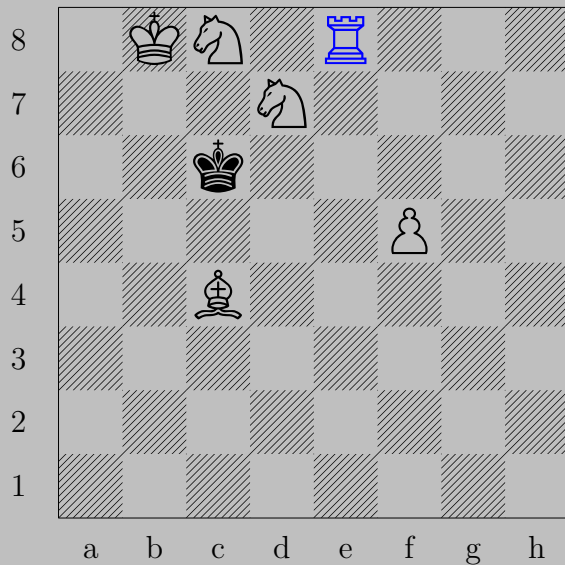
If ♘d6 , ♚xd6 . Otherwise, ♚d6 .

2453



Gy. Neukomm, 1928

2453



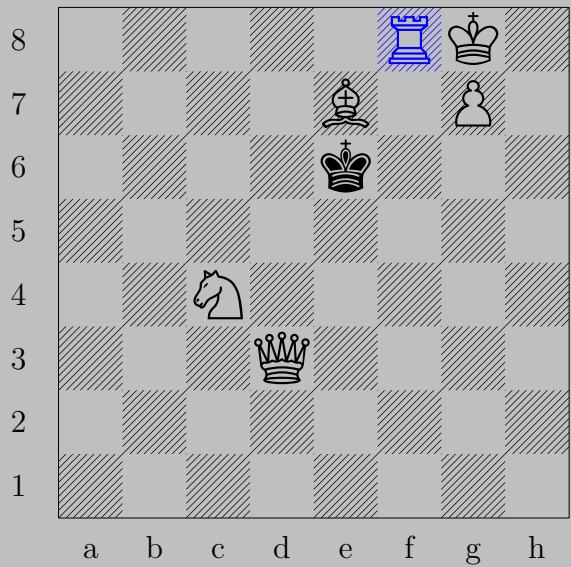
$\text{♞e8}(\text{♖}), \text{♔xd7}$
 $\text{♝b5}.$

2454



Gy. Neukomm, 1927

2454



♖f8(♖), ♚xe7
♚d6

2455



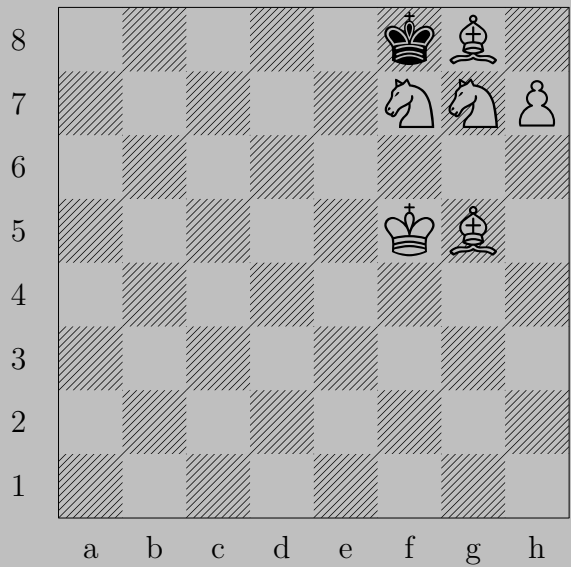
Gy. Neukomm, 1927

2455



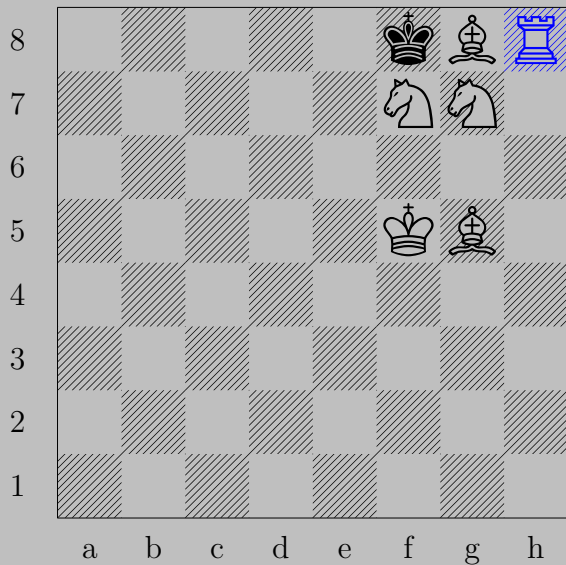
♖b8(♖), ♔e6
♖e4

2456



Gy. Neukomm, 1927

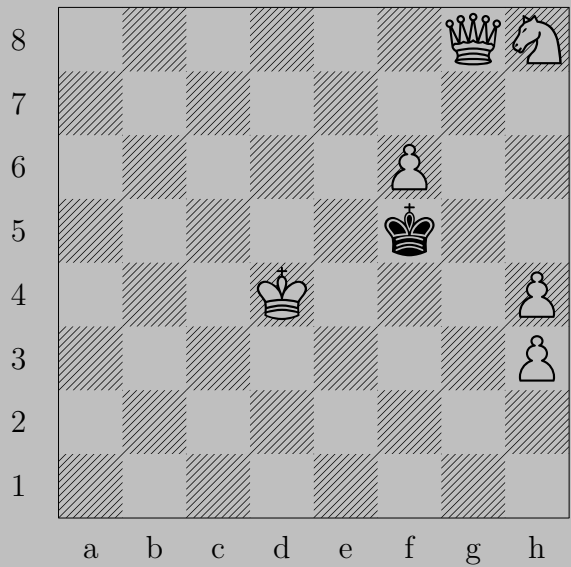
2456



♖h8(♖), ♔xg7

♞h6

2457



Gy. Neukomm, 1947

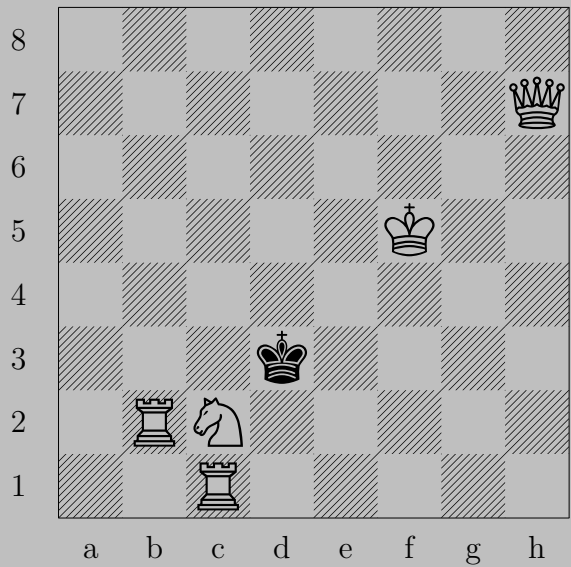
2457



♙a2

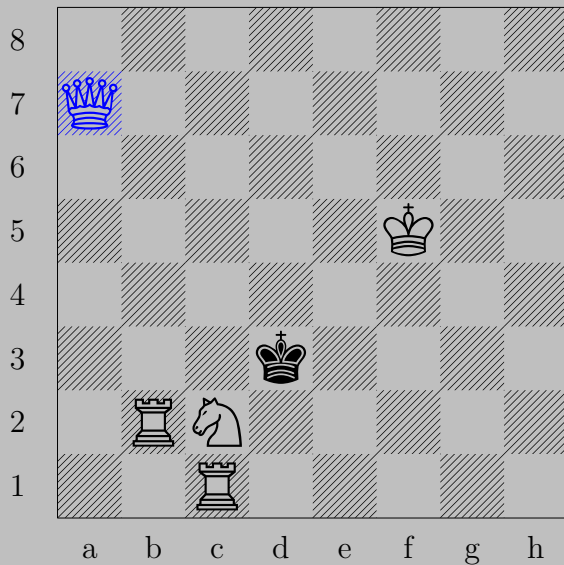
If ♞×f6, ♙f7. If ♚f4, ♙f2.

2458



Gy. Neukomm, 1924

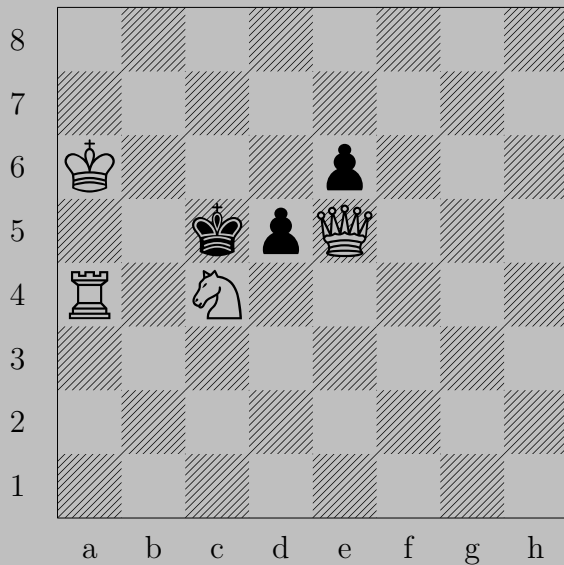
2458



♔a7

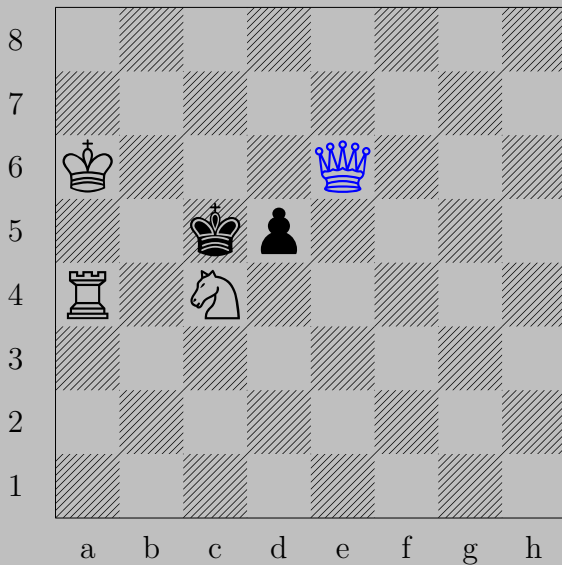
If ♖c3 or ♖c4, ♗d4. If ♔d2 or ♔e2, ♗e3.

2459



Gy. Neukomm - V. Onitju, 1932

2459



♔×e6

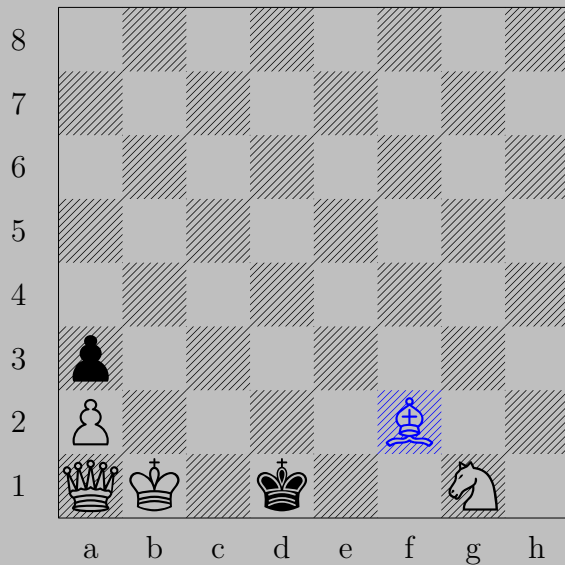
If ♖×c4, ♖×c4. If ♘d4, ♔d6. If ♔d4, ♔e3.

2460



Gy. Neukomm - V. Onitiu, 1929

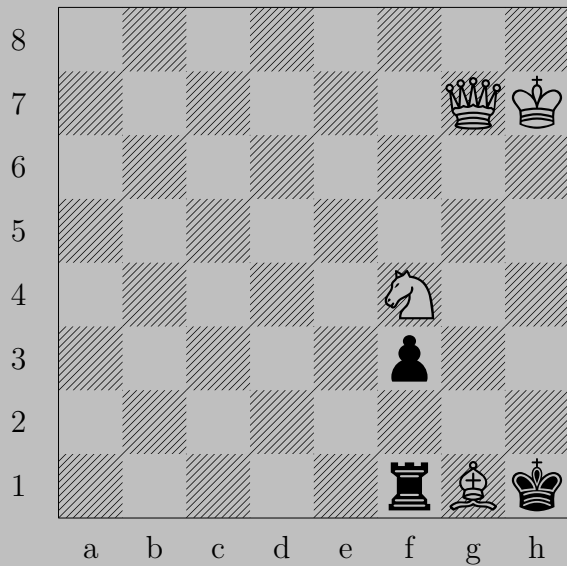
2460



♔f2, ♕d2

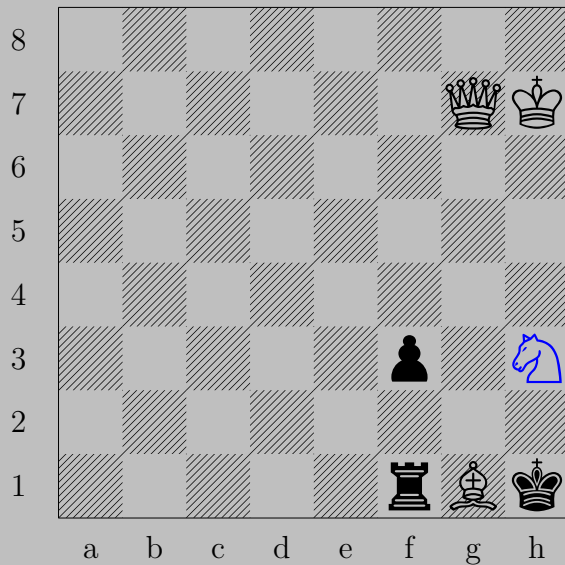
♑d4

2461



K. Nielsen, 1959

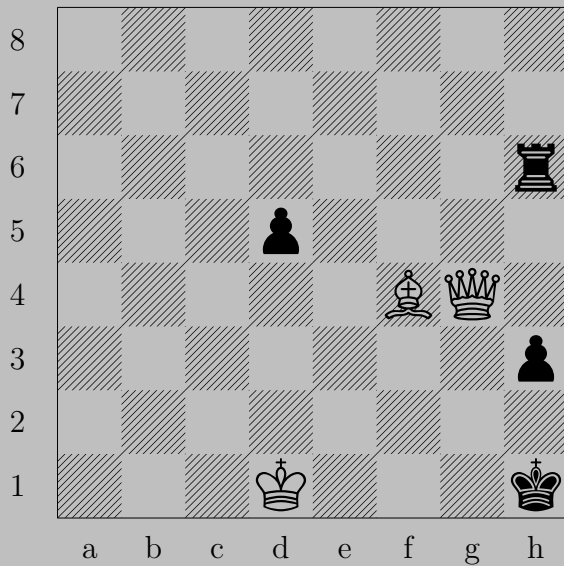
2461



$\text{N}h3$

If $\text{B}f2$, $\text{Q}b7$. If $\text{R}xg1$, $\text{Q}xg1$. If $\text{R}f2$, $\text{N}xf2$. If $\text{R}a1-e1$, $\text{N}f2$.

2462



K. Nielsen, 1971

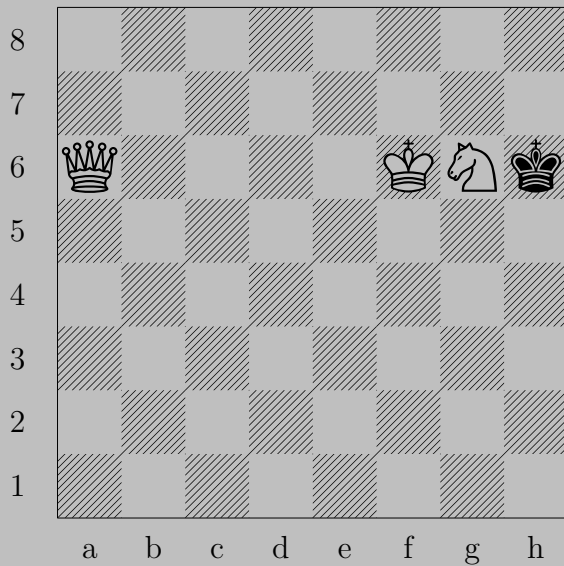


♗e3

If ♘h2, ♙f3. If ♖g6, ♙xh3.

Otherwise, ♙g1.

2463



A. Nieman, 1985

2463



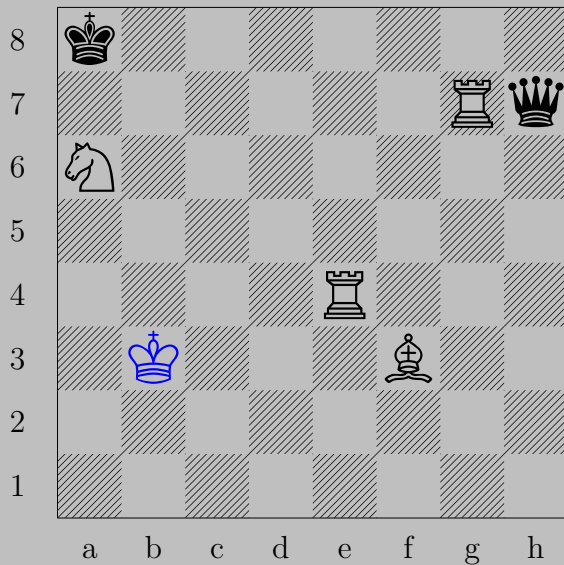
♙c8

If ♔h5, ♚h3. If ♔h7, ♚h8.

2464



M. Niemeijer, 1971

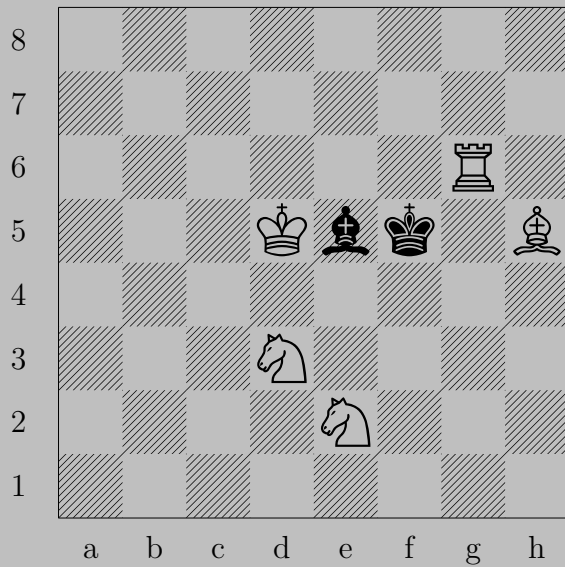


♔b3

If ♔g8+, ♖e6. If ♔xg7, ♖e7. If ♔xe4, ♙xe4.

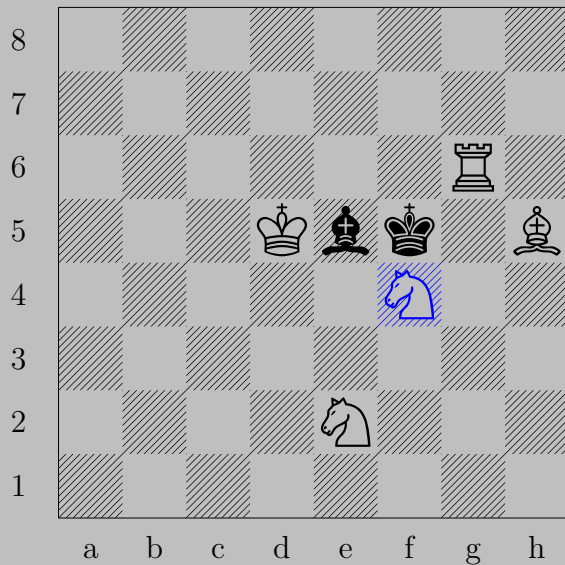
Otherwise, ♖e8.

2465



M. Niemeijer, 1970

2465

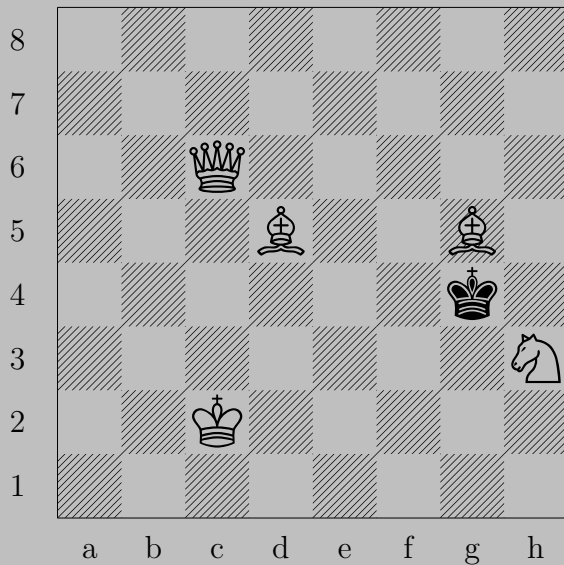


$\text{♞}(d3)f4$

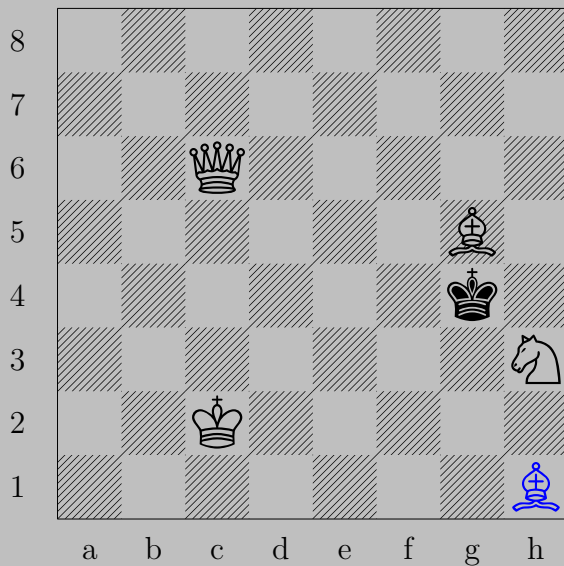
If $\text{♞}\times f4$, $\text{♞}d4$.

Otherwise, $\text{♞}g4$.

2466



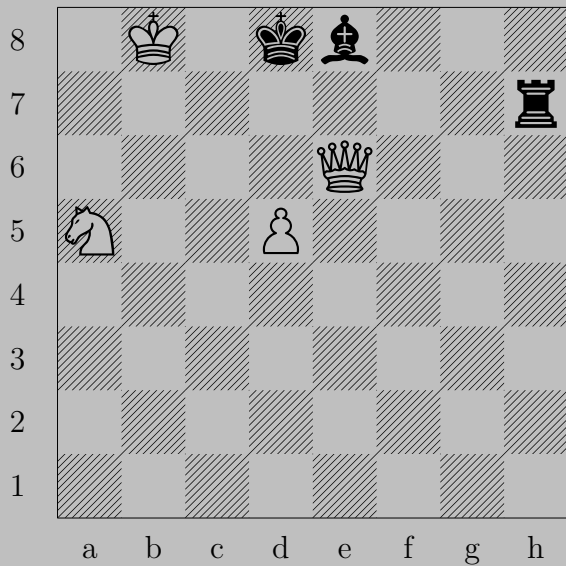
A. E. Niemelä, 1976



♘h1

If ♙×h3 or ♙g3, ♚g2. If ♙f5, ♚e4. If ♙h5, ♘f3.

2467



K. Nikolov, 1962

2467

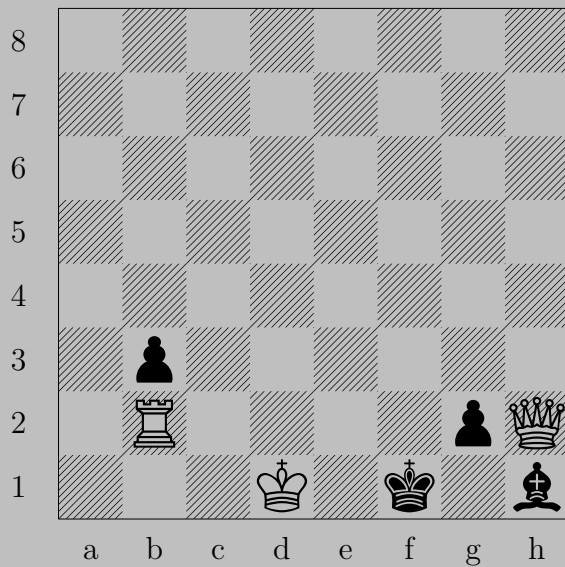


\triangleleft d6

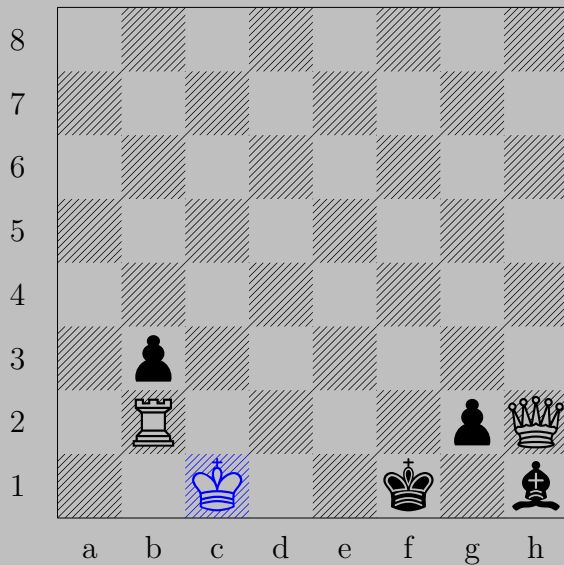
If \triangleleft d7, \triangleleft b7. If \triangleleft d7, \triangleleft c6. If \triangleleft c7, \triangleleft x c7.

Otherwise, \triangleleft c8.

2468



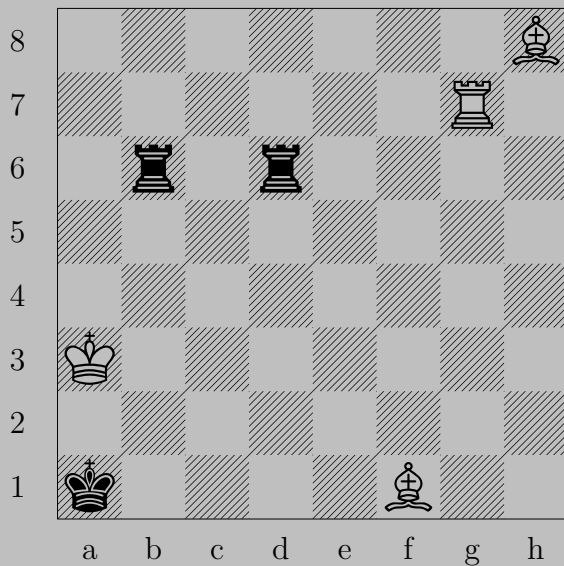
R. Nobre - G. Maritz, 1985



♔c1

If ♔e1, ♚g1. If ♖g1(♚), ♚e2. If ♖g1(♘), ♚f2.

2469



R. Notaro, 1978

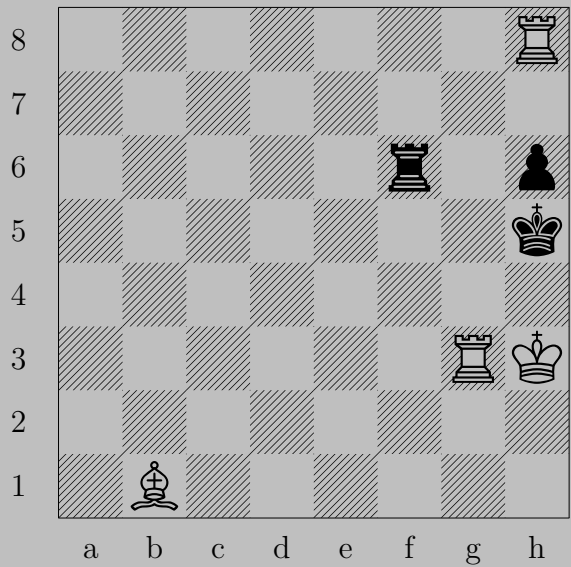
2469



♖g1+

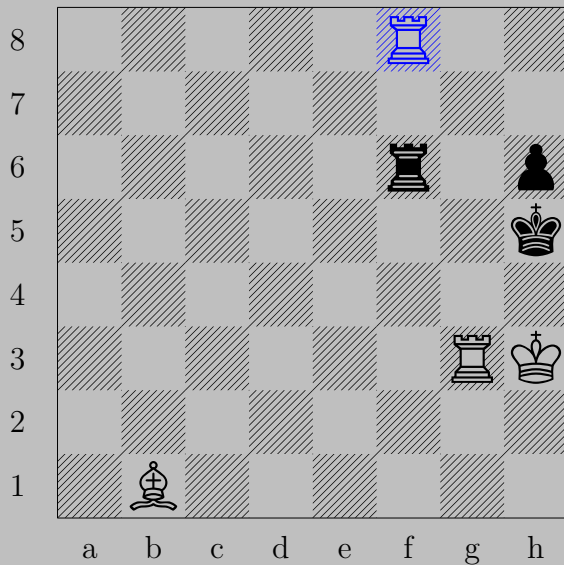
If ♜b1 or ♞b2 , ♙d3 . If ♞d4 , ♙b5 .

2470



R. Notaro, 1977

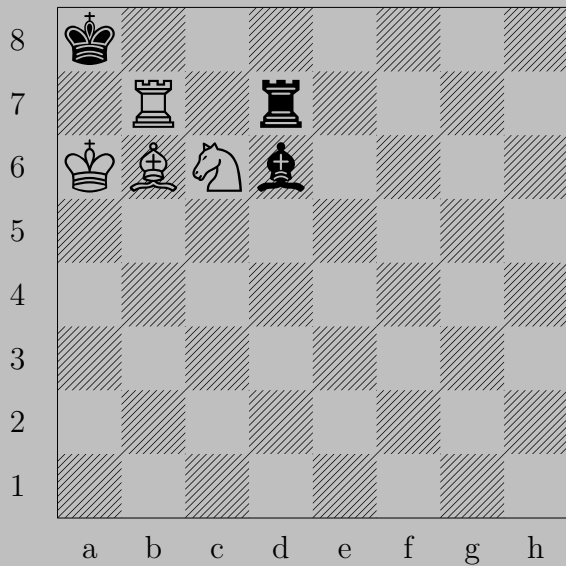
2470



Rf8

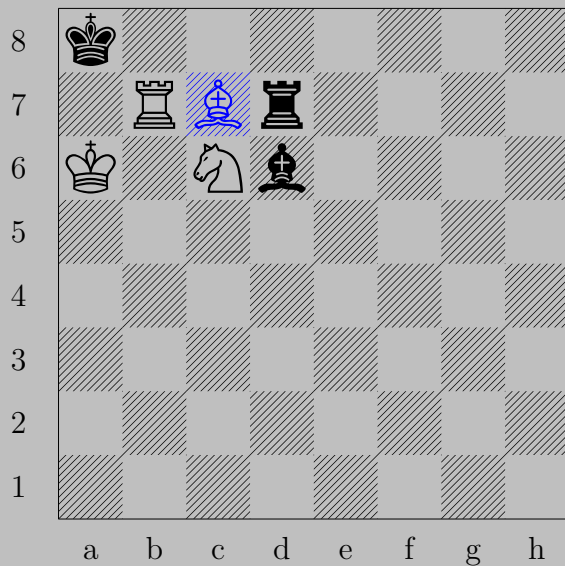
If Rxf8 or Rf7 or Rf1-f4 , Kg6 . If Rf5 , Rxf5 . If Ra6-e6 , Rf5 . If Rg6 , Kxg6 .

2471



C. E. Nylund, 1944

2471

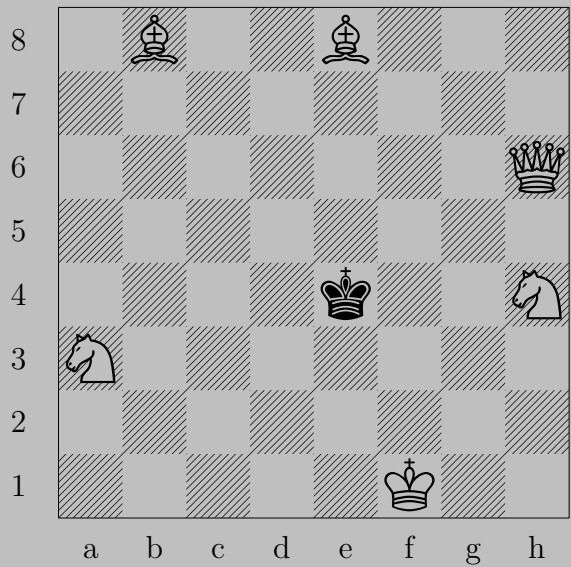


♙c7

If ♖xc7 or ♙c5 , ♖b8 .

Otherwise, ♖a7 .

2472



T. Nylund, 1967

2472



Nf5

If $\text{Q}\times\text{f5}$, $\text{Q}\text{g6}$. If Qd3 , Qe3 . If Qd5 , Qc6 . If Qf3 , Qf4 .

2473



J. Oehquist, 1902

2473

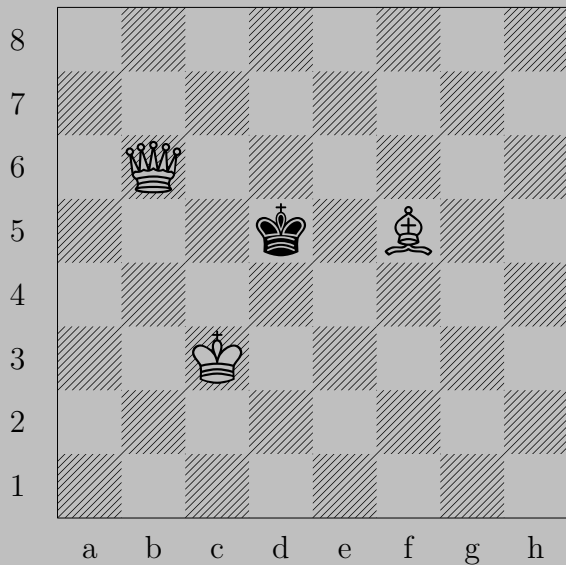


Rc4

If Qxc4 , Nc5 . If Re2 , Kd4 .

Otherwise, Ne5 .

2474



J. Oehquist, 1889

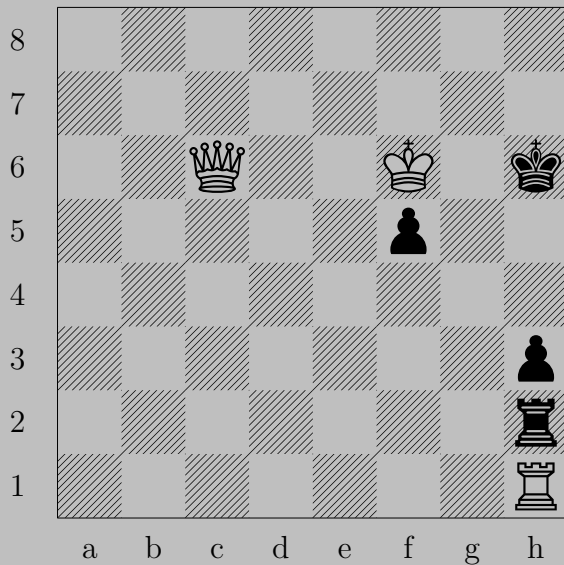
2474



♔g4, ♕e4 or ♕e5

♔d4

2475



A. G. Ojanen, 1942

2475



♙g2

If ♖xg2, ♜xh2. If ♜xg2, ♜xh3. If ♔h7, ♚g7. If ♔h5, ♚g5.
If ♜xh1 or ♖f4, ♚g6.

2476



A. G. Ojanen, 1942

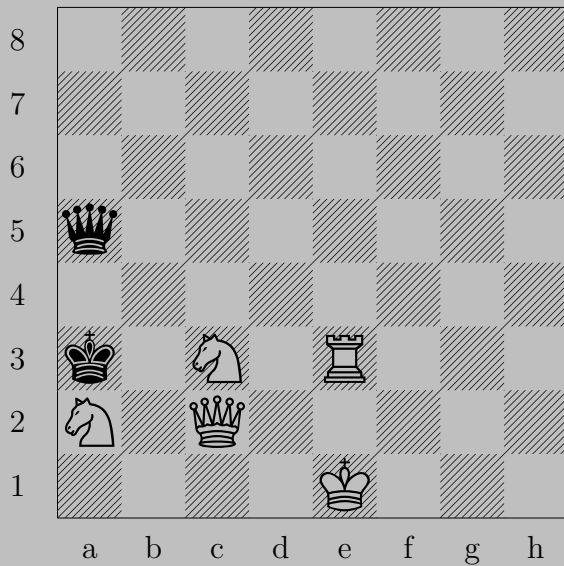
2476



♔f6

If $\Delta a1(\text{♔})$ or ♔c1 , ♔c2 . If $\Delta a1(\text{♞})$, ♔b1 . If ♔a1 , ♔e5 . If ♞b3 , ♔b5 .

2477



T. Oksala, 1954

2477

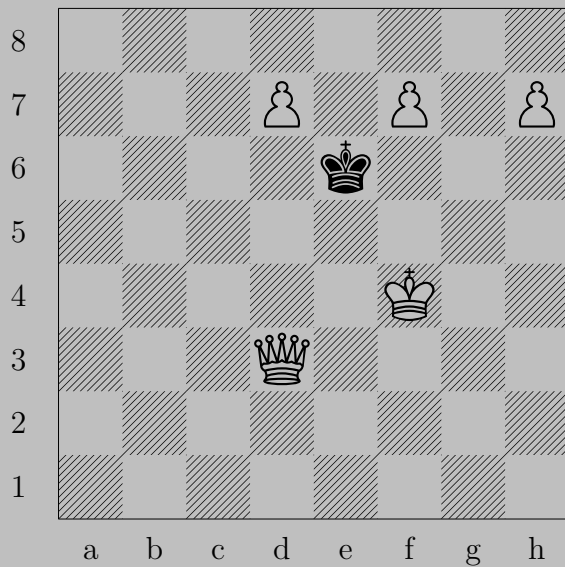


♔d1

If ♚h5+, ♘e2. If ♚d8+, ♘d5. If ♚d5+, ♘×d5. If ♚×c3, ♖×c3.

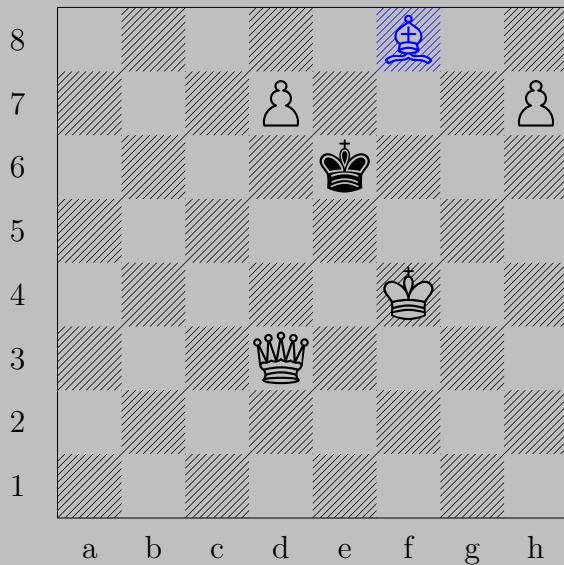
Otherwise, ♘b1.

2478



A. E. van Ommeren, 1915

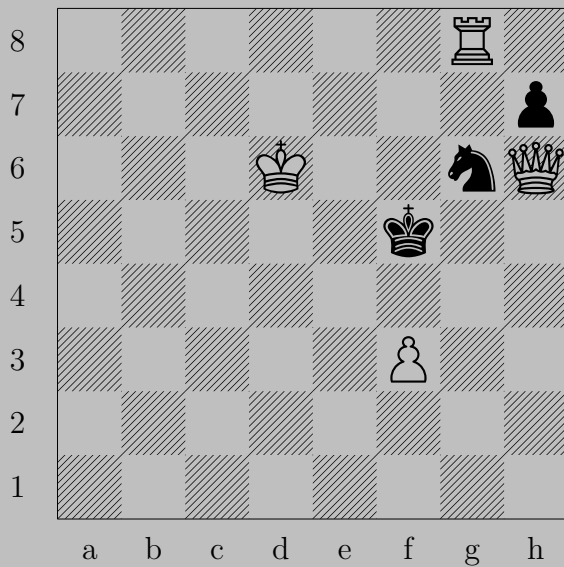
2478



♔f8 (♔), ♕f6 or ♕f7

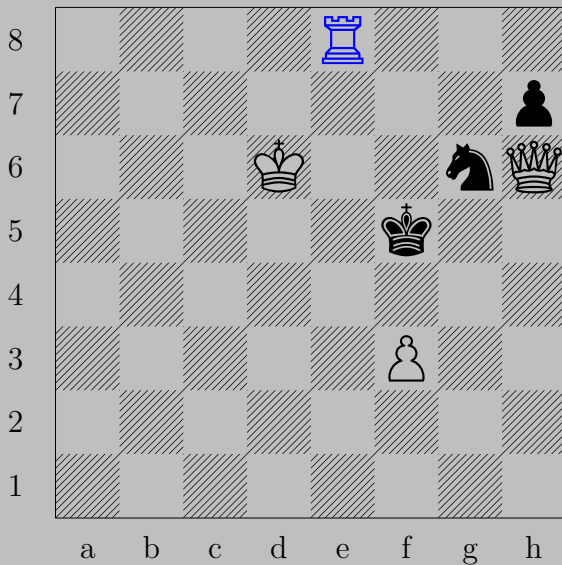
♖f5

2479



V. Onitiu, 1927

2479

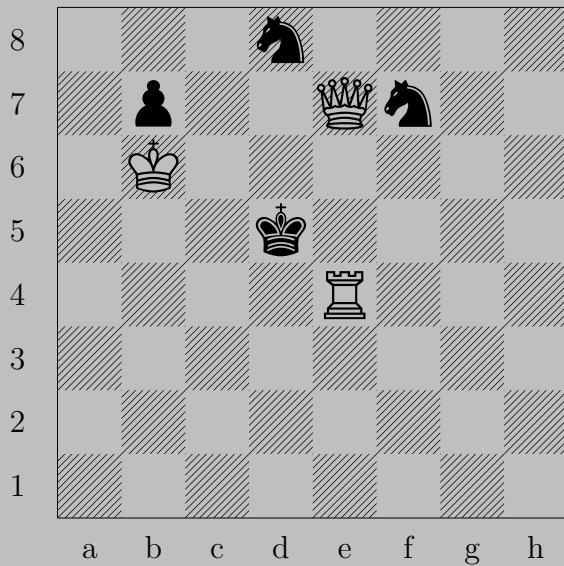


$\text{R}e8$

If $\text{N}h8$, $\text{R}e5$. If $\text{N}e5$, $\text{R}xe5$. If $\text{N}f8$, $\text{R}xf8$.

Otherwise, $\text{R}f8$.

2480



V. Onitiu, 1930

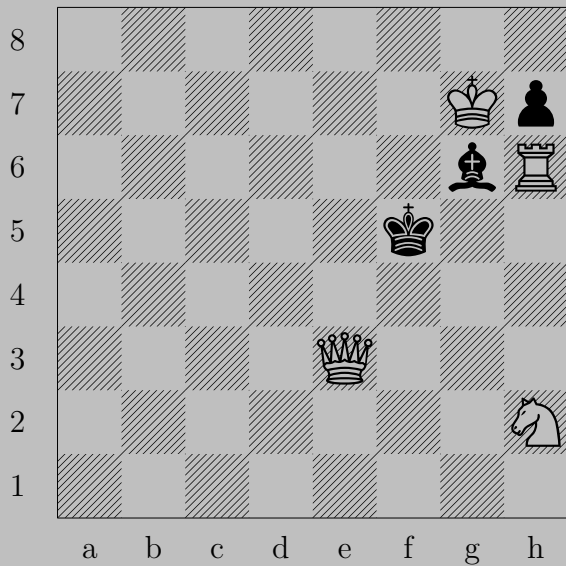


♙e8

If ♔d6, ♖d4. If ♘c6, ♙e6. If ♘e6, ♙×e6.

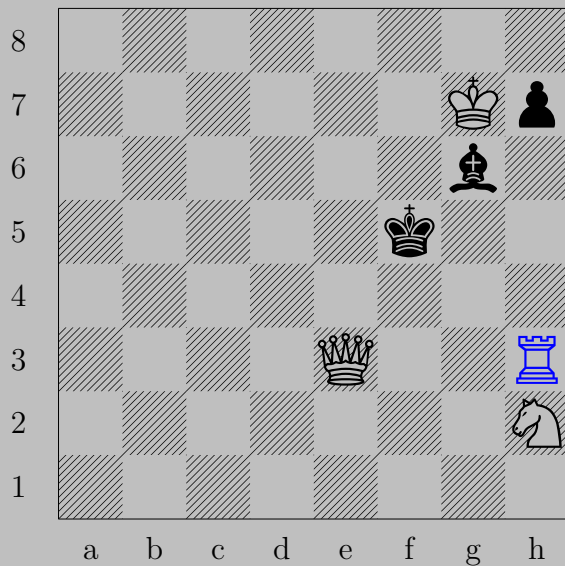
If ♘e5, ♙×e5. Otherwise, ♙e5.

2481



V. Onitiu, 1930

2481



$\text{R}h3$

If $\text{K}h5$, $\text{R}xh5$.

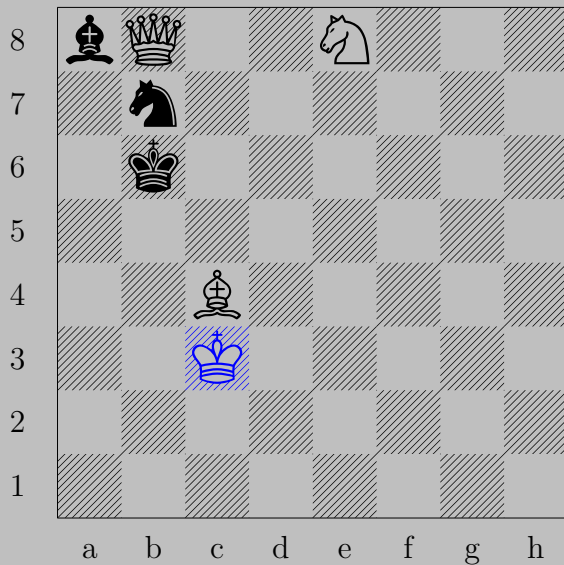
Otherwise, $\text{R}f3$.

2482



V. Onitiu, 1930

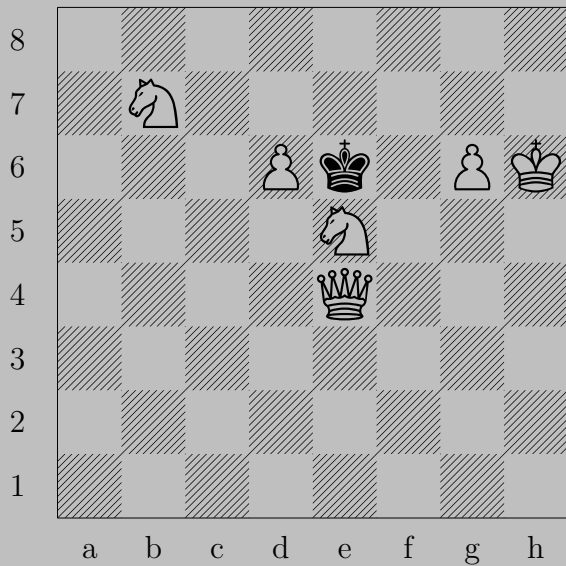
2482



♔c3

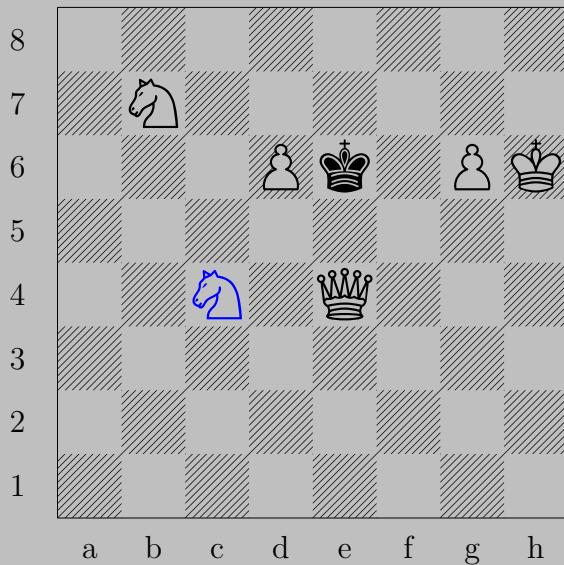
If ♔a5, ♚a7. If ♔c5 or ♔c6, ♚c7.

2483



V. Onitiu, 1930

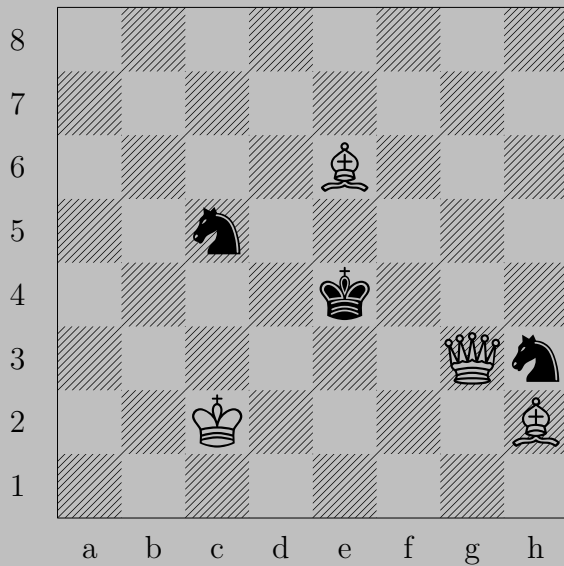
2483



♘c4+

If ♚d7, ♘b6. If ♚f6, ♚e5.

2484

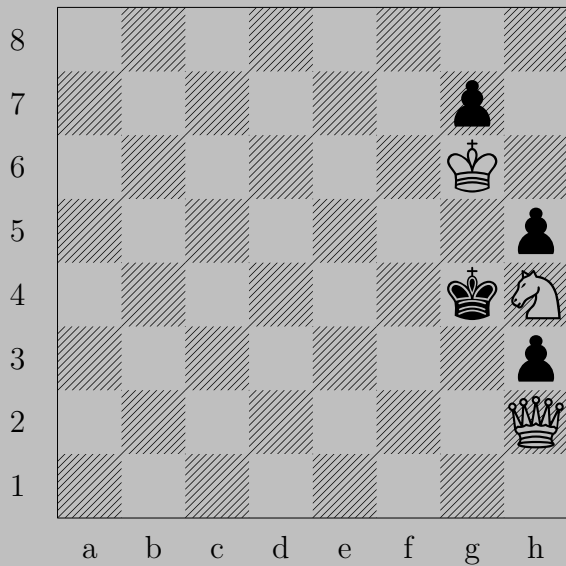


V. Onitiu, 1930



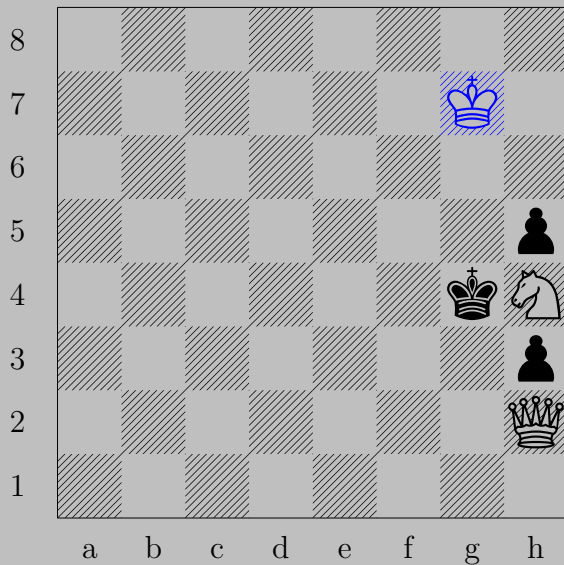
♙f7
 If ♔d4, ♚e5. If ♔f5, ♚g6. If ♘f4, ♚xf4. If ♘g1 or ♘f2 or ♘g5, ♚f4.
 If ♘d3, ♚xd3. Otherwise, ♚d3.

2485



V. Onitiu, 1930

2485



♔×g7

If ♔×h4, ♚f4. If ♔g5, ♚g3.

2486



V. Onitiu, 1930

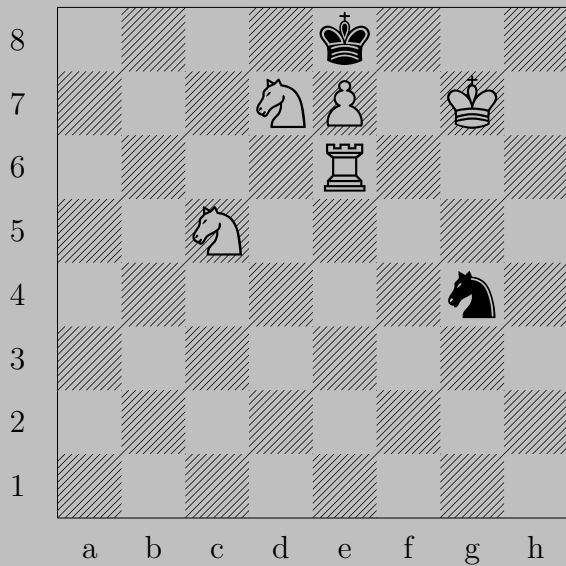
2486



♔h4

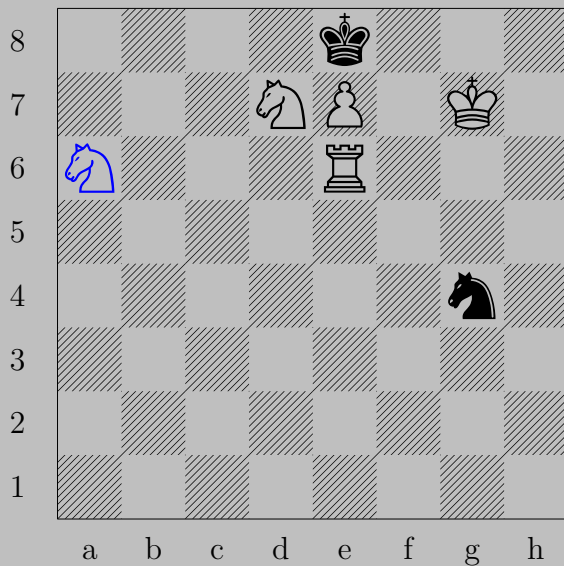
If ♔xc4, ♕xe4. If ♔e5, ♕f6.

2487



V. Onitiu, 1931

2487

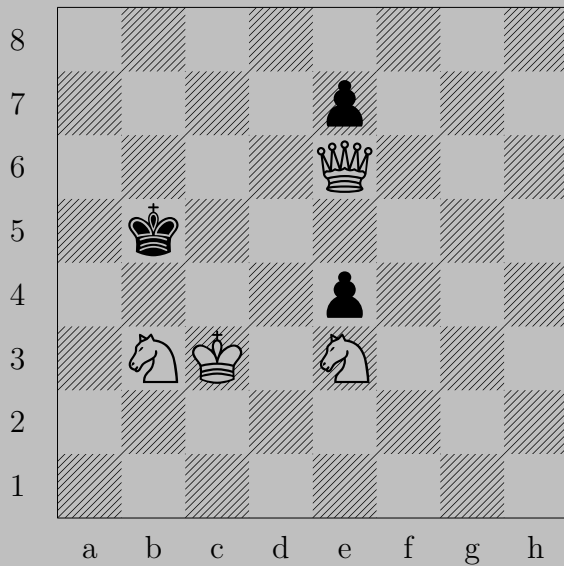


♞a6

If ♔×d7, ♙e8(♔)

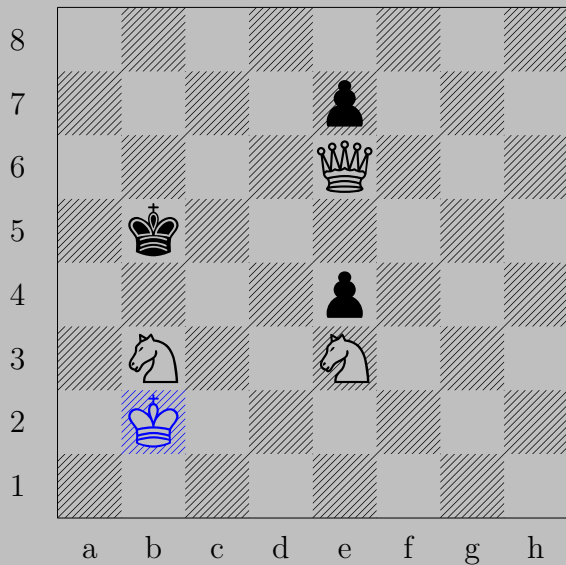
If ♞f6, ♞×f6. Otherwise, ♞f6.

2488



V. Onitiu, 1932

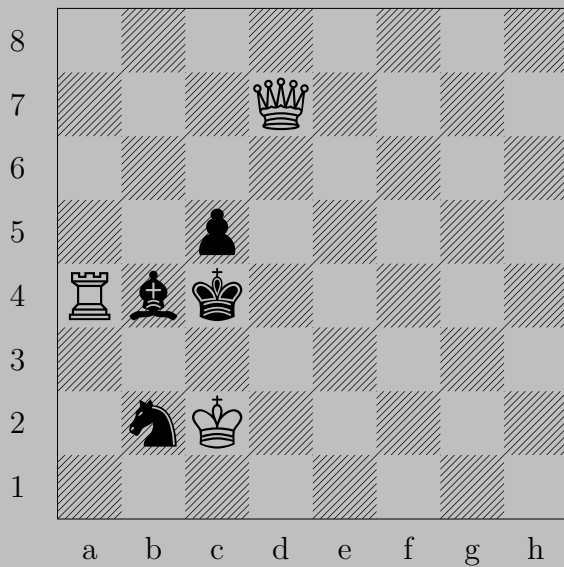
2488



♔b2, ♔a4 or ♔b4

♕c4

2489



V. Onitiu, 1932

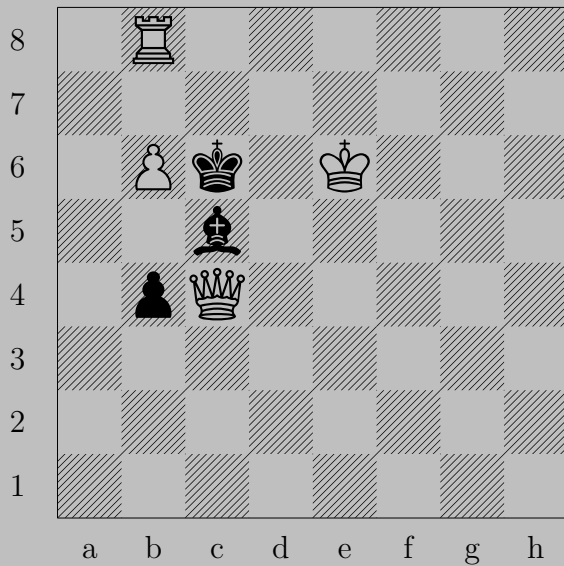
2489



♙d6

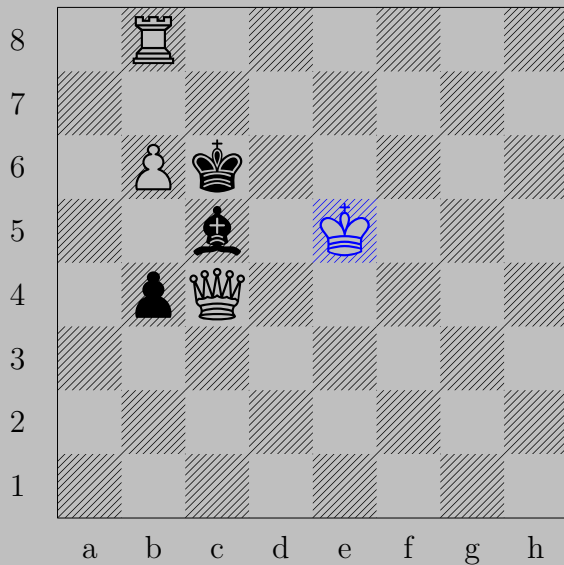
If ♖b5, ♙a6. If ♞xa4 or ♞d1, ♙d3. If ♞d3, ♙xd3.

2490



V. Onitiu, 1932

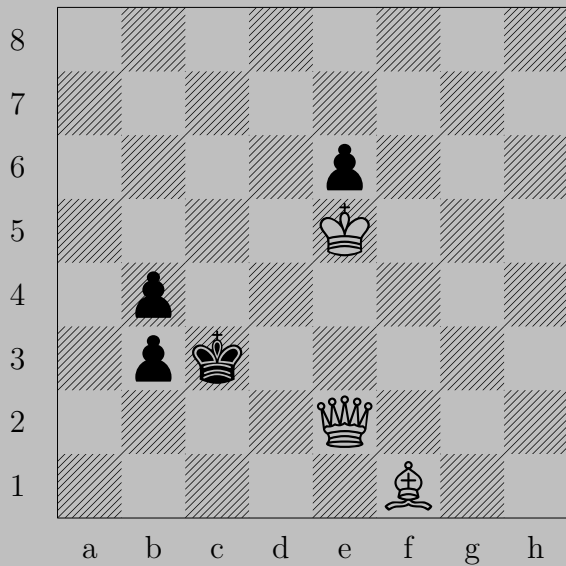
2490



♔e5

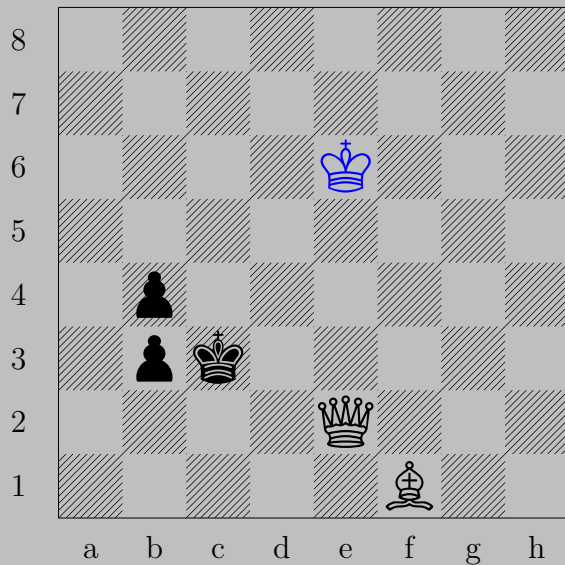
If ♙d7, ♚e6. If ♖b3, ♚a4.

2491



V. Onitiu, 1932

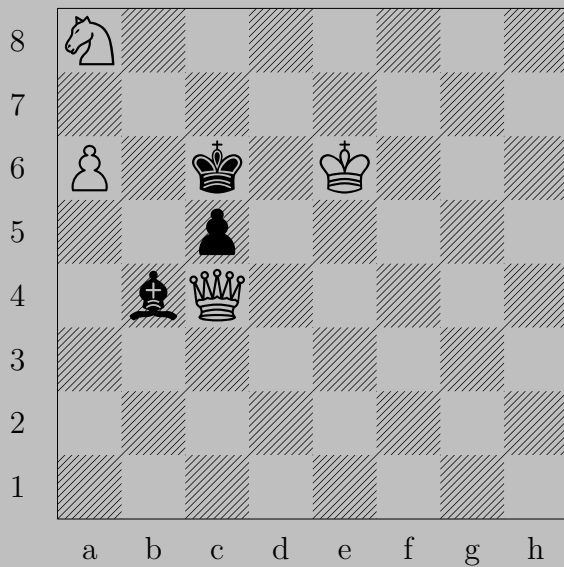
2491



♔×e6

If ♔d4, ♕e5. If ♖b2, ♕d3.

2492



V. Onitiu, 1932

2492



♙d3

If ♖d4, ♙d5.

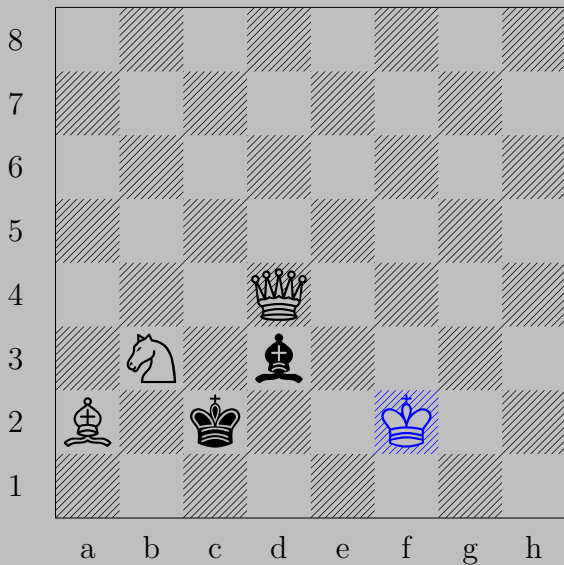
Otherwise, ♙d7.

2493



V. Onitiu, 1932

2493

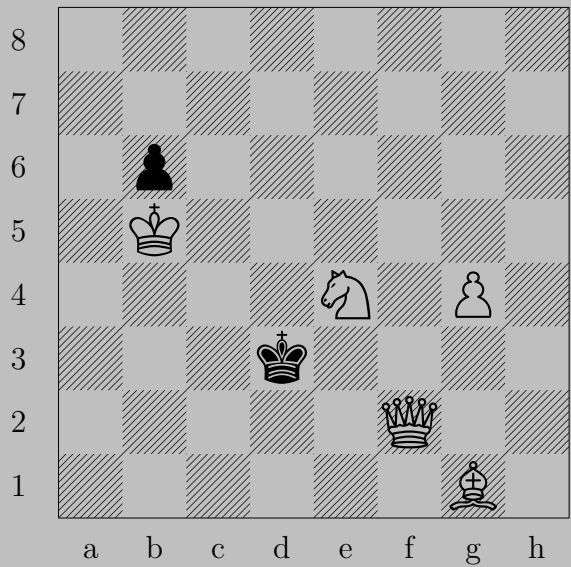


♔f2

If ♔d1, ♕×d3.

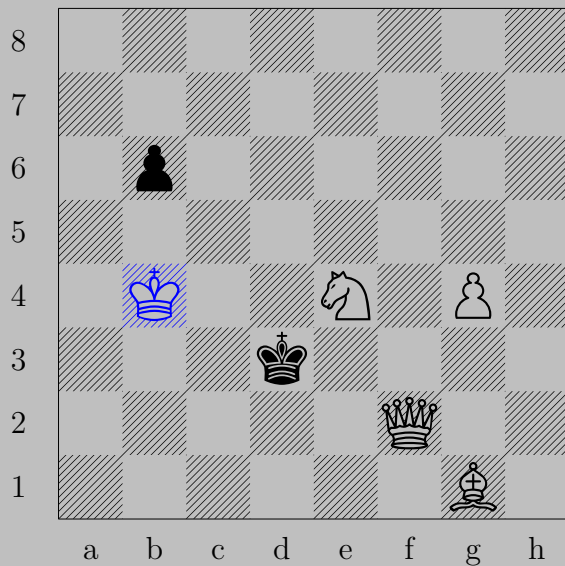
Otherwise, ♕d2.

2494



V. Onitiu, 1932

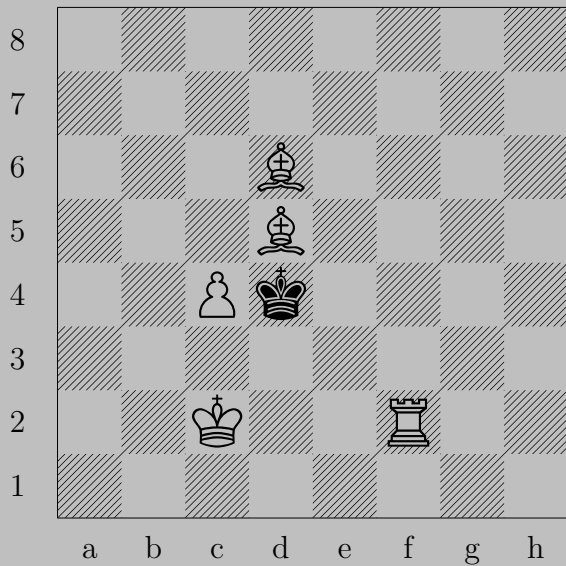
2494



♔b4

If ♕×e4, ♖f5. If ♙b5, ♘c5.

2495



V. Onitiu, 1932

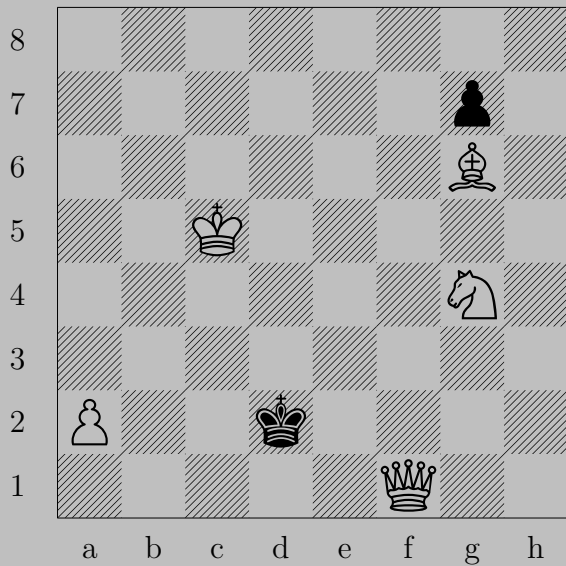
2495



♗c6

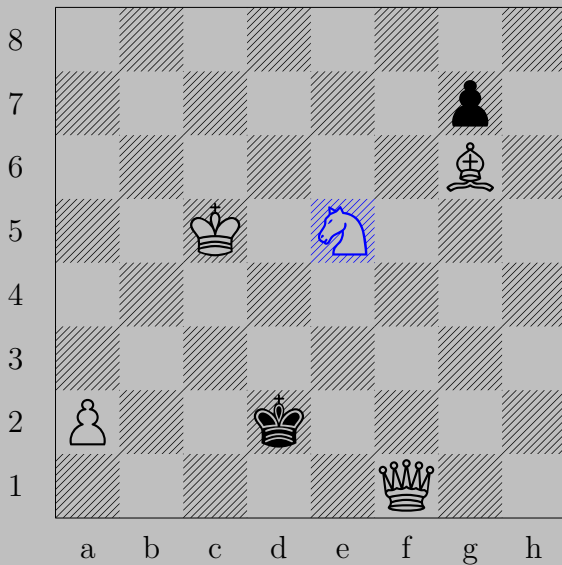
If ♙xc4, ♖f4. If ♚e3, ♗c5.

2496



V. Onitiu, 1932

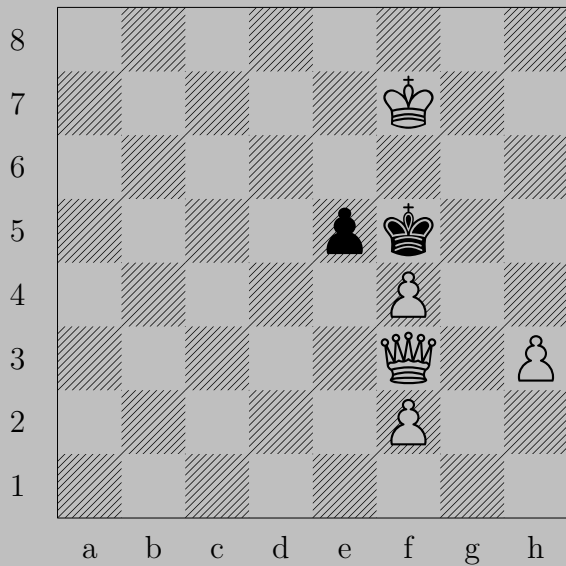
2496



$\text{N}e5$

If $\text{K}c3$, $\text{Q}c1$. If $\text{K}e3$, $\text{N}c4$.

2497



V. Onitiu, 1926

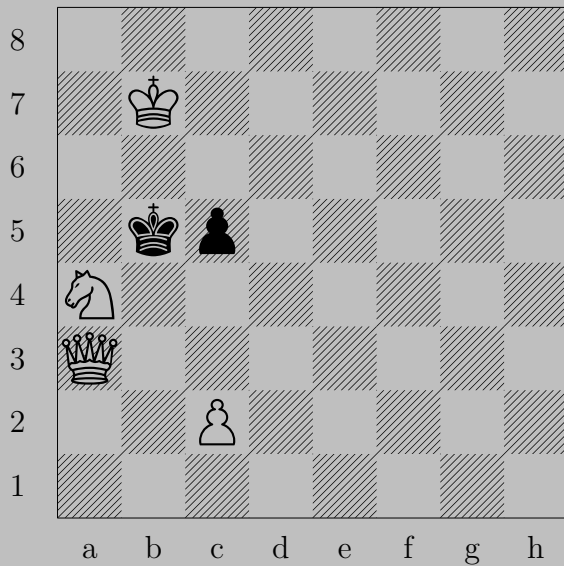
2497



♚g2

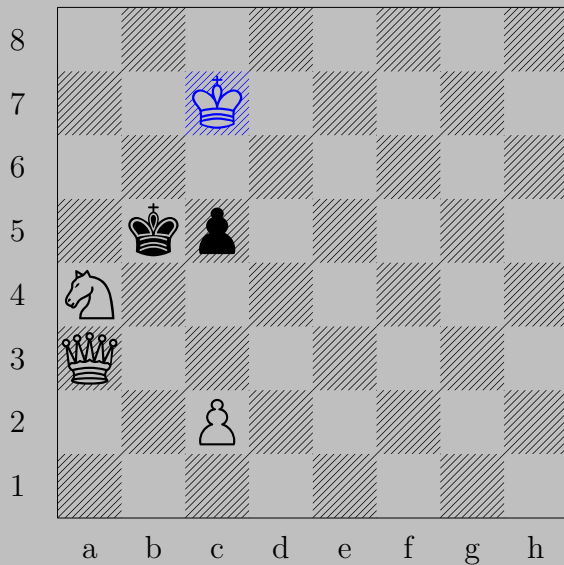
If ♔xf4, ♚g4. If ♙xf4, ♚d5. If ♙e4, ♚g5.

2498



V. Onitiu, 1926

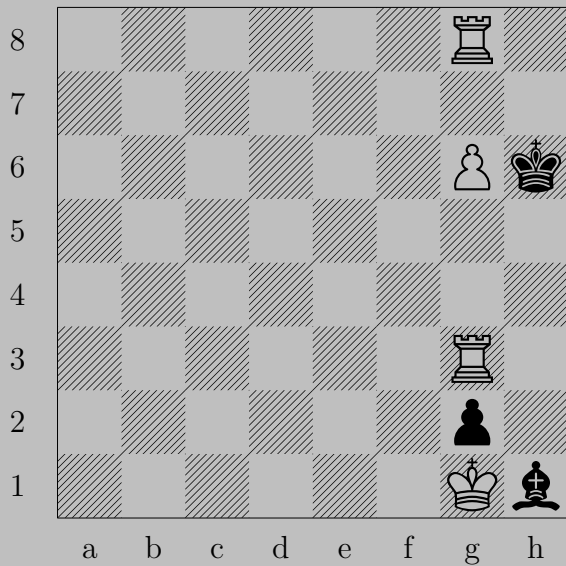
2498



♔c7

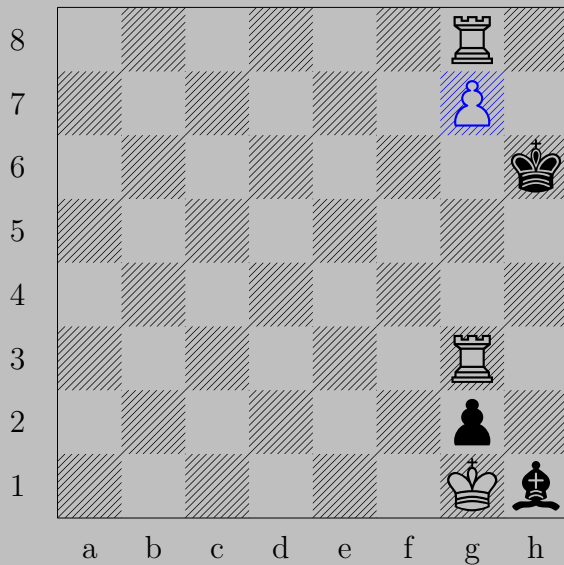
If ♖c4 or ♔a5 or ♔a6, ♞c3. If ♔c4, ♚xc5.

2499



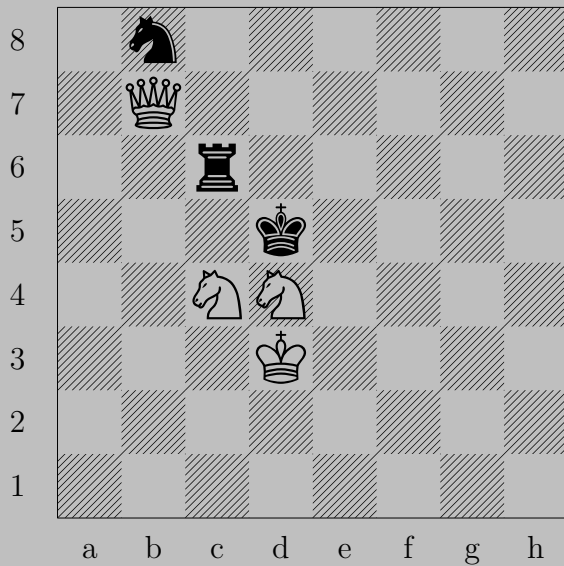
V. Onitiu, 1926

2499



♙g7, ♔h7 or ♙h5
♖h8

2500



V. Onitiu, 1926

2500



♙a8

If ♖c5, ♙a5. If ♘a6 or ♘d7, ♙xc6.