

Chess Puzzles

2701-2800

Mate in Two

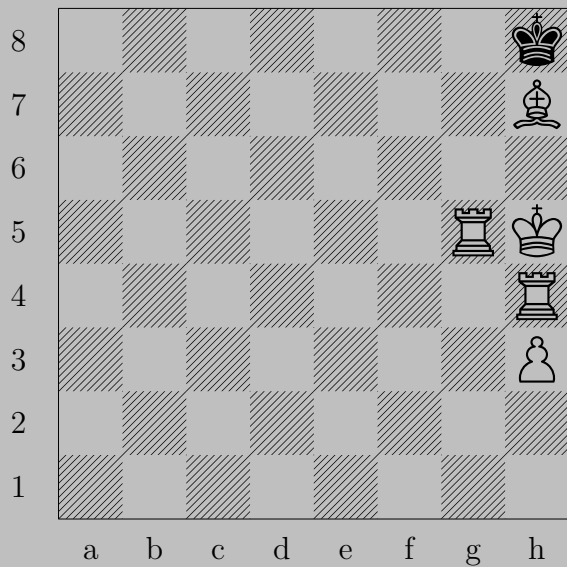
White to Move

László Polgár

Links

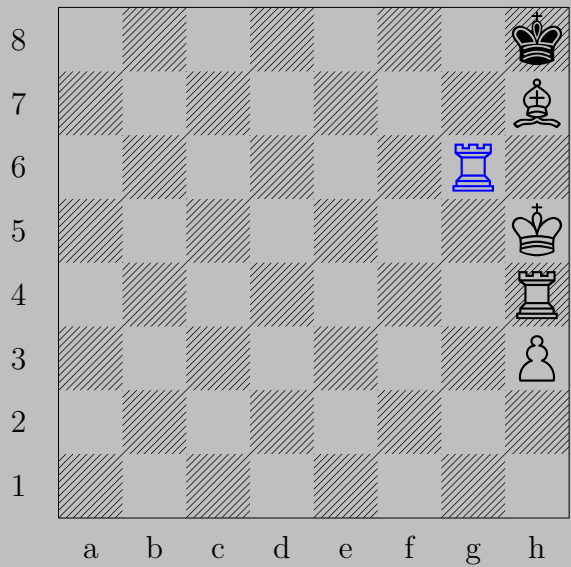
2701	2702	2703	2704	2705	2706	2707	2708	2709	2710
2711	2712	2713	2714	2715	2716	2717	2718	2719	2720
2721	2722	2723	2724	2725	2726	2727	2728	2729	2730
2731	2732	2733	2734	2735	2736	2737	2738	2739	2740
2741	2742	2743	2744	2745	2746	2747	2748	2749	2750
2751	2752	2753	2754	2755	2756	2757	2758	2759	2760
2761	2762	2763	2764	2765	2766	2767	2768	2769	2770
2771	2772	2773	2774	2775	2776	2777	2778	2779	2780
2781	2782	2783	2784	2785	2786	2787	2788	2789	2790
2791	2792	2793	2794	2795	2796	2797	2798	2799	2800

2701



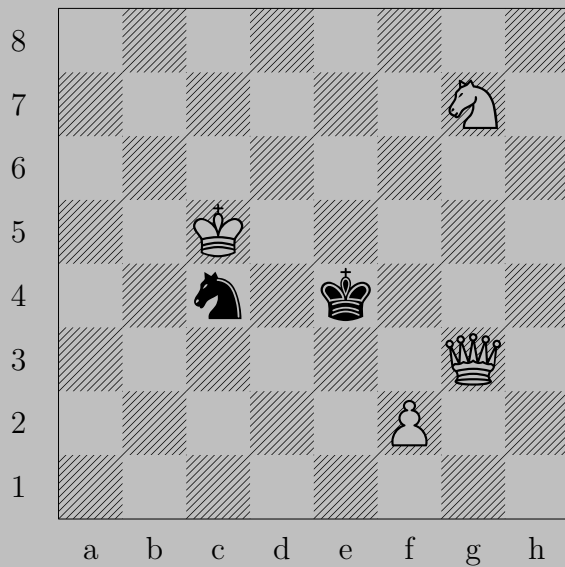
Gy. Schiffert, 1927

2701



♖g6, ♔xh7
♔g5

2702



Gy. Schiffert, 1927

2702

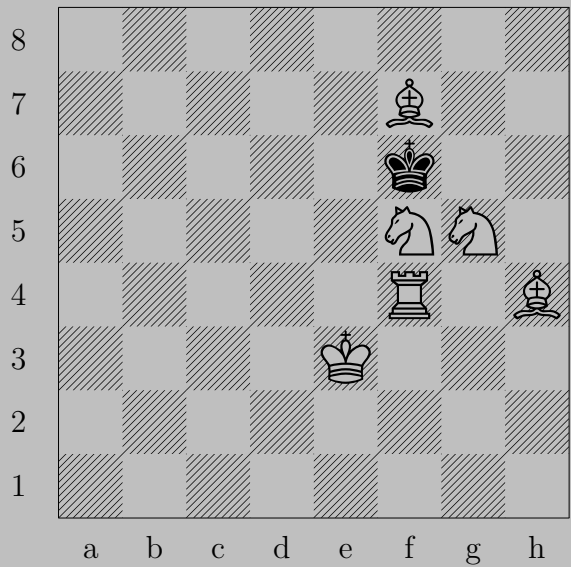


♔h3

If ♞d6, ♔e3. If ♞e3, ♔×e3.

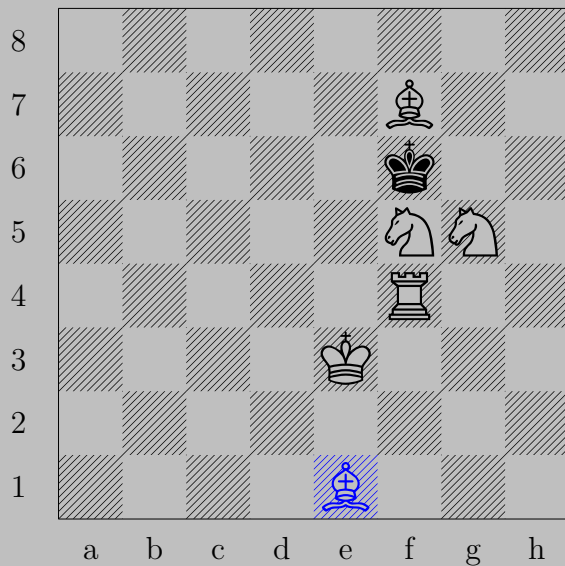
Otherwise, ♔f5.

2703



Gy. Schiffert, 1927

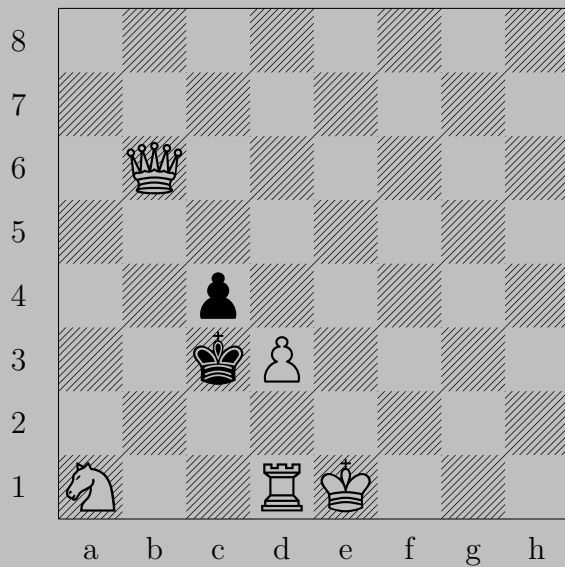
2703



♙e1

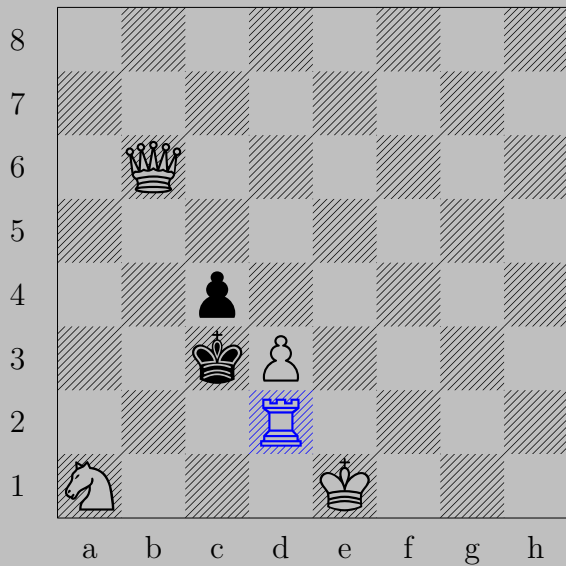
If ♚×g5, ♙h4. If ♚e5, ♙c3.

2704



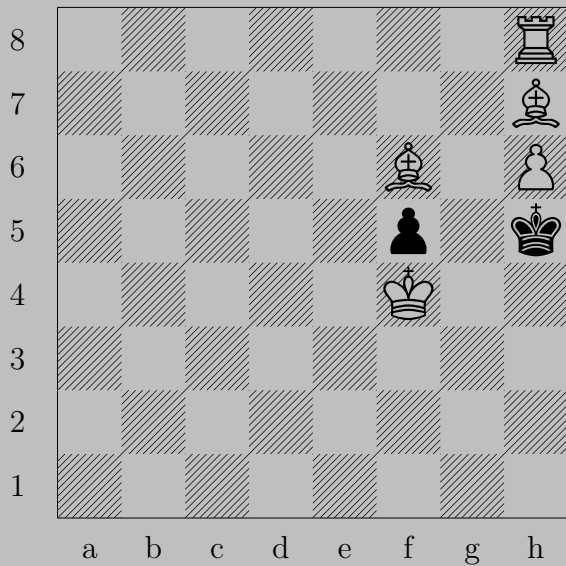
Gy. Schiffert, 1927

2704



♖d2, ♗x3
♑c5

2705



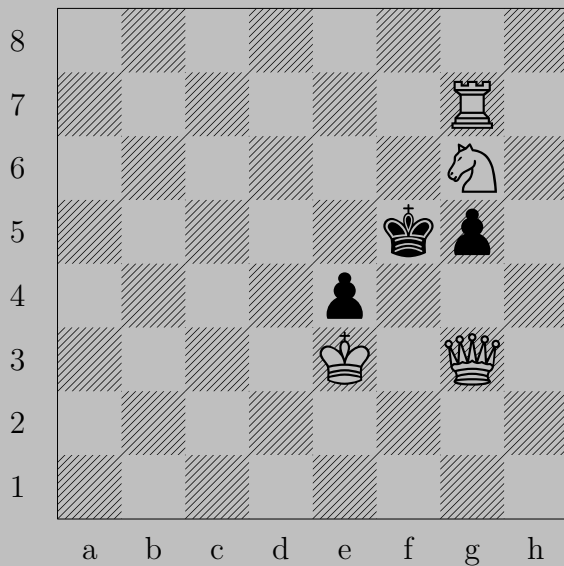
Gy. Schiffert, 1927

2705



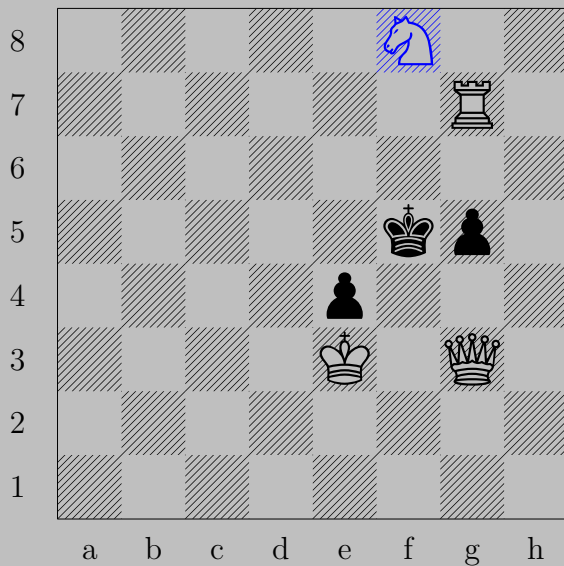
♔×f5, ♔×h6
♚g6

2706



Gy. Schiffert, 1927

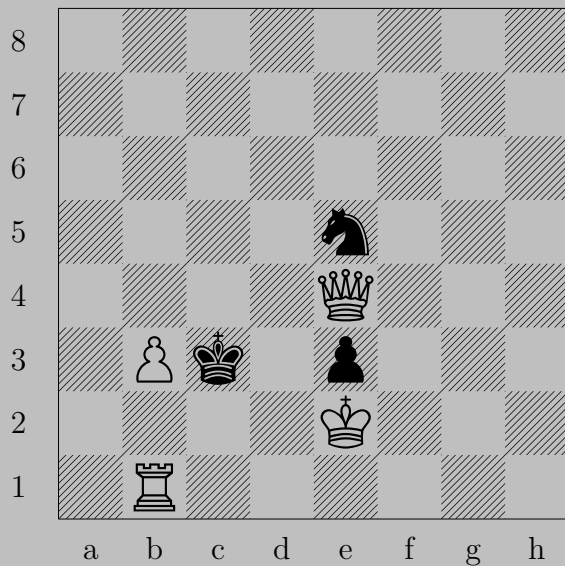
2706



f8

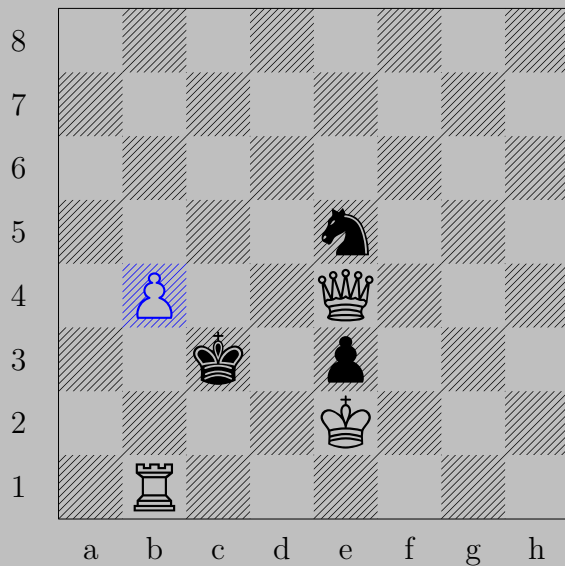
If g4, f4. If f6, xg5.

2707



Gy. Schiffert, 1927

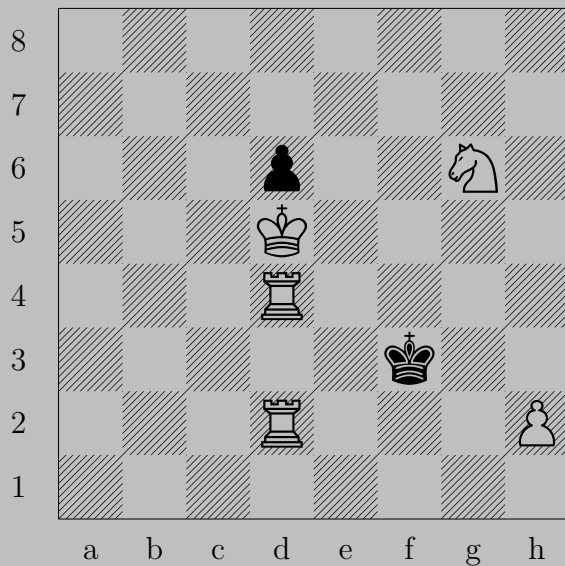
2707



♖b4

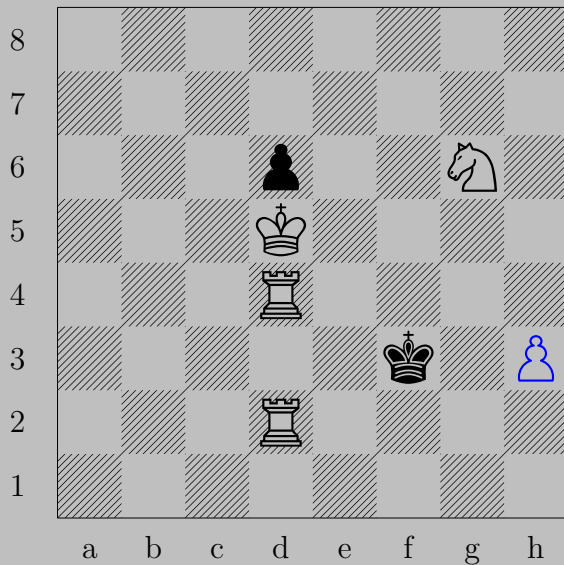
If ♘d3. ♕×d3. Otherwise, ♕d3.

2708



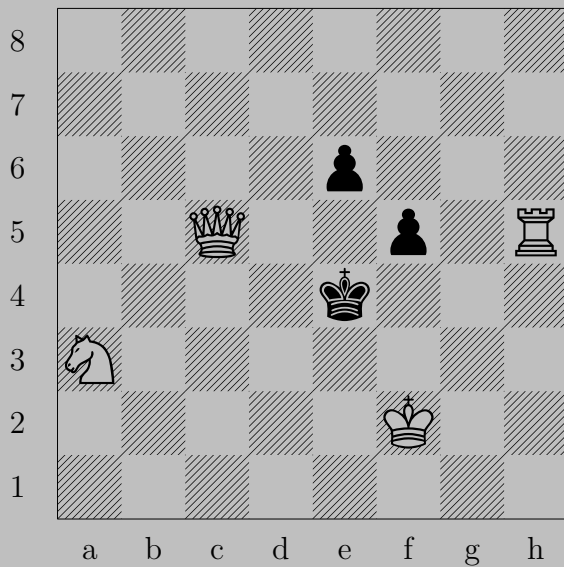
Gy. Schiffert, 1927

2708



♖h3, ♔e3 or ♔g3
♖(d4)d3

2709



Gy. Schiffert, 1927

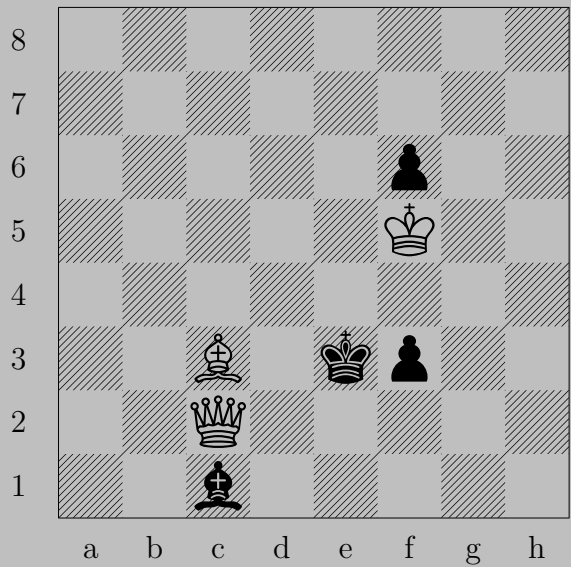
2709



Rg5

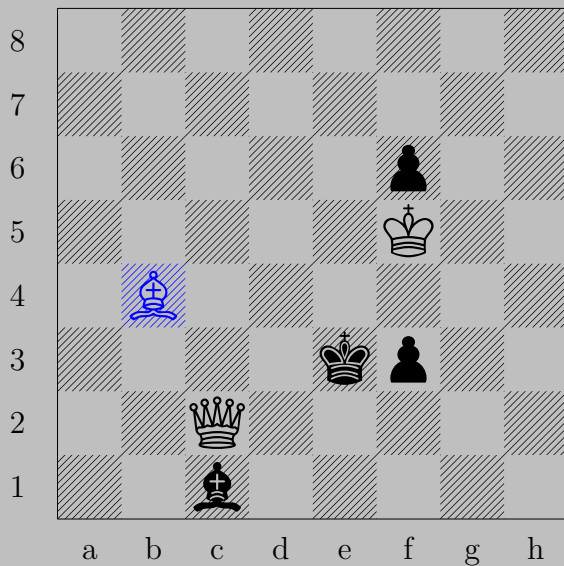
If Pe5 or Pf4 , Qc4 . If Kd3 or Kf4 , Ke3 .

2710



Gy. Schiffert, 1927

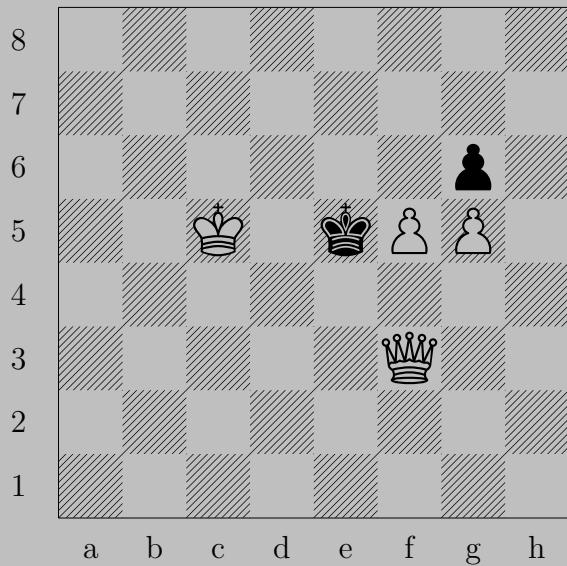
2710



♖b4

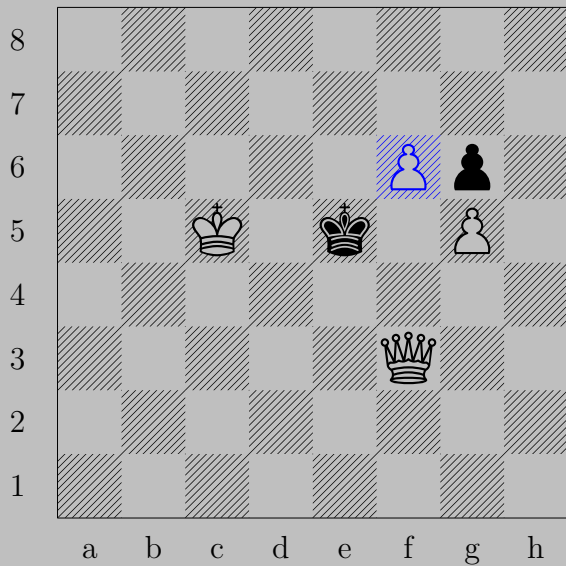
If ♕d4 or ♜f2, ♔e4. If ♖b2-a3, ♔d2. If ♖d2, ♔xd2.

2711



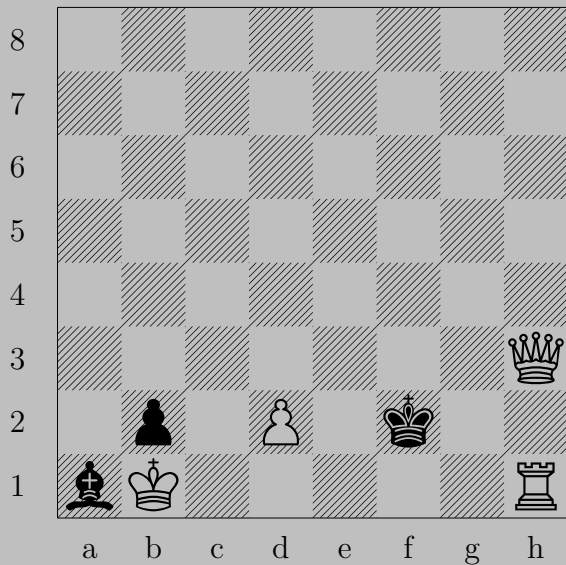
Gy. Schiffert, 1927

2711



♖f6, ♔e6
♑d5

2712



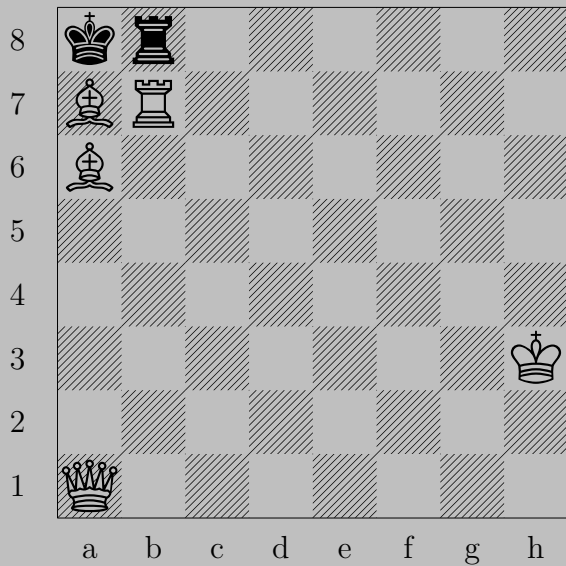
Gy. Schiffert, 1927

2712



♖d1, ♔e2
♕f1

2713



Gy. Schiffert, 1928

2713



h1

If x**b**7, x**b**7. If h8+, h7. If g8, g7. ... If c8, c7.

2714



Gy. Schiffert, 1931

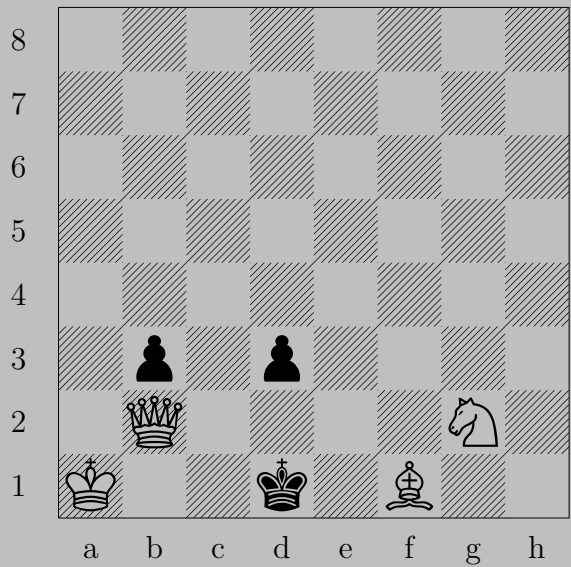
2714



$\text{R}a2$

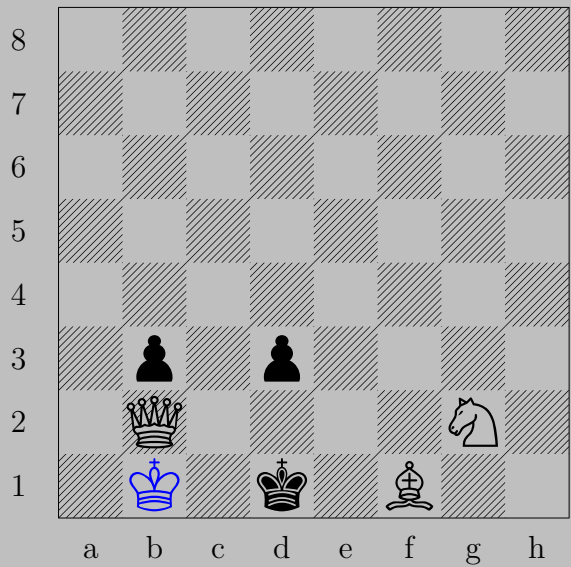
If $\text{P}c3$, $\text{R}a4$. If $\text{K}c3$, $\text{N}b5$.

2715



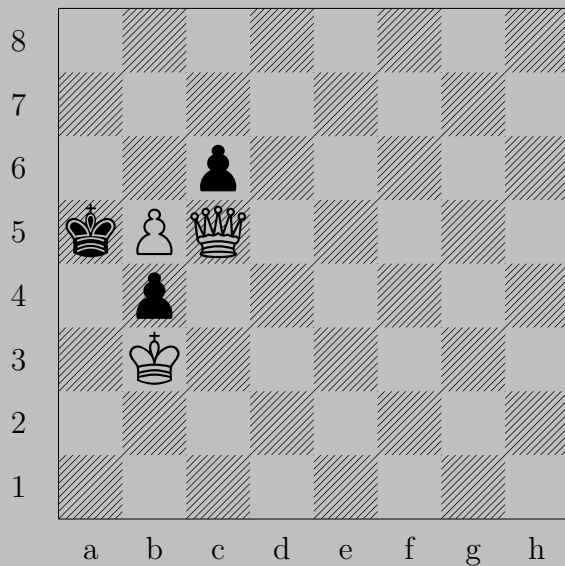
Gy. Schiffert, 1926

2715



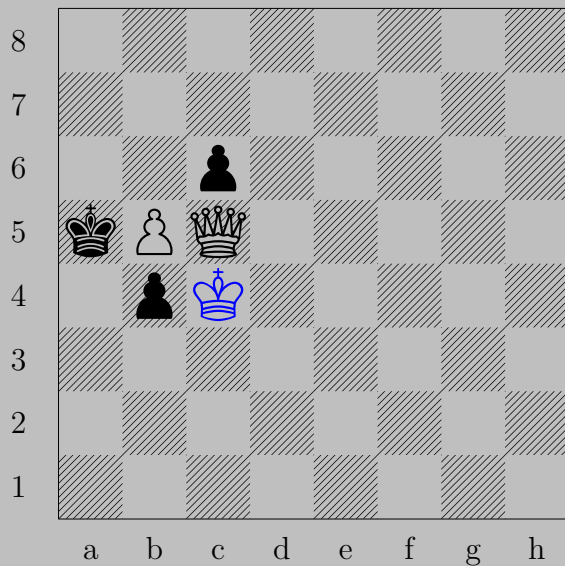
♔b1, ♖d2
♔×b3

2716



Gy. Schiffert - S. Boros, 1926

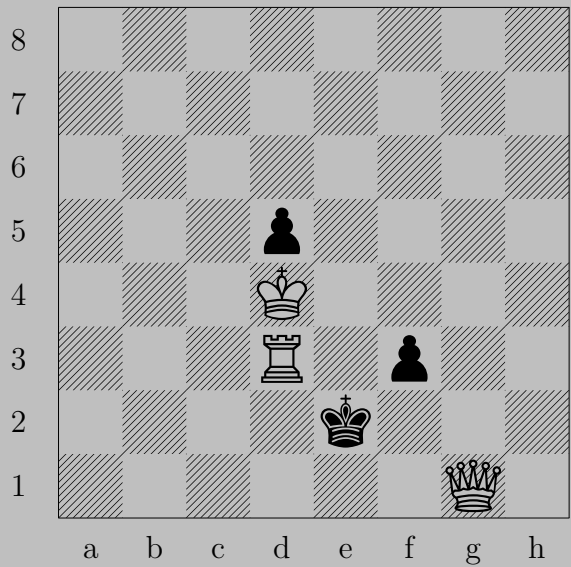
2716



♔c4

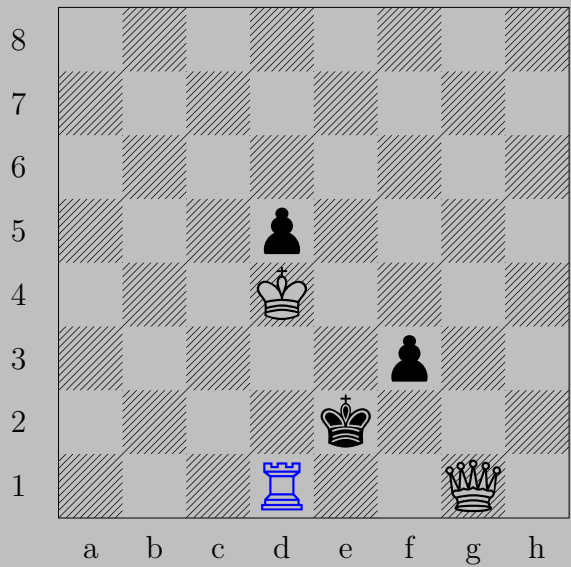
If ♙x b5 , ♚x b5 . If ♙b3 , ♚a7 . If ♔a4 , ♚x b4 .

2717



Gy. Schiffert - L. Szdsz, 1928

2717



♖d1, ♔f2

♔g4

2718



Gy. Schiffert - Gy. Balló, 1928

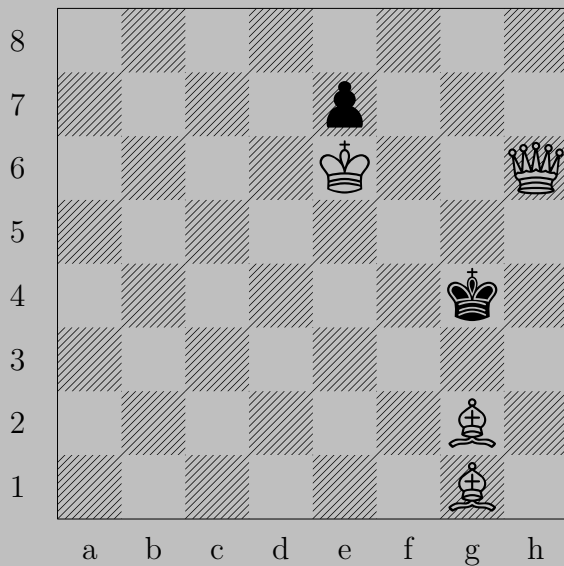
2718



♙b5, anything

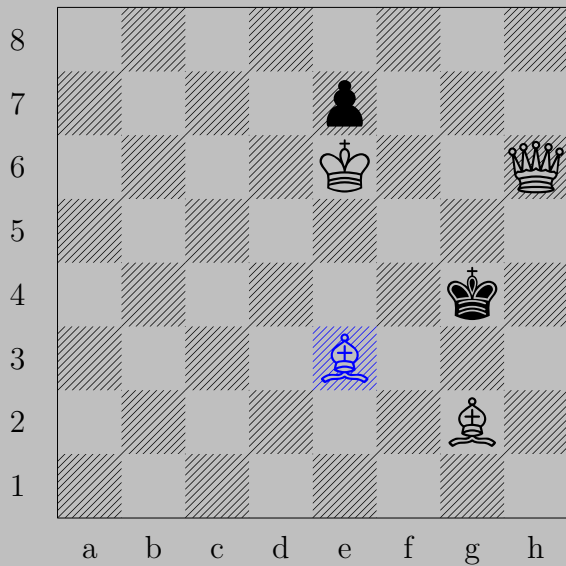
♙e5

2719



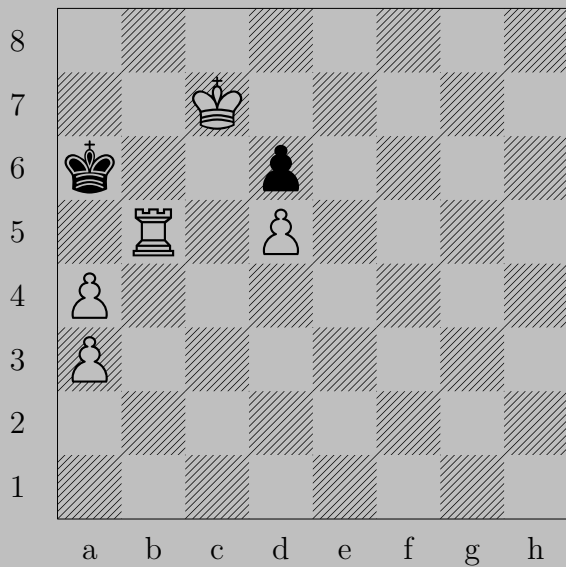
Gy. Schiffert - Gy. Neukomm, 1927

2719



♙e3, ♚g3
♙h3

2720



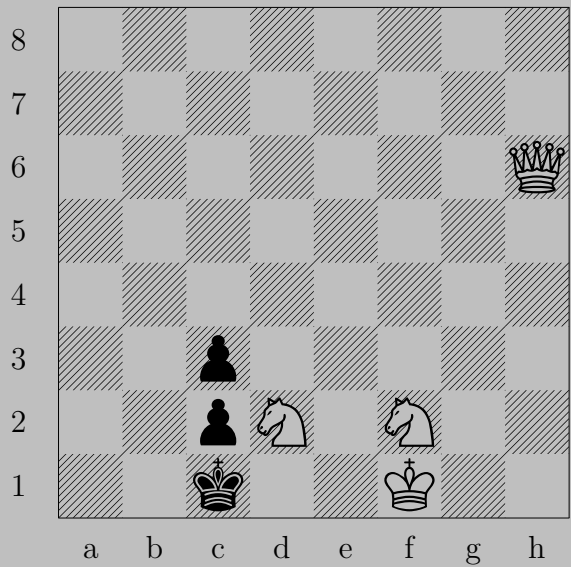
J. Schlarkó, 1926

2720



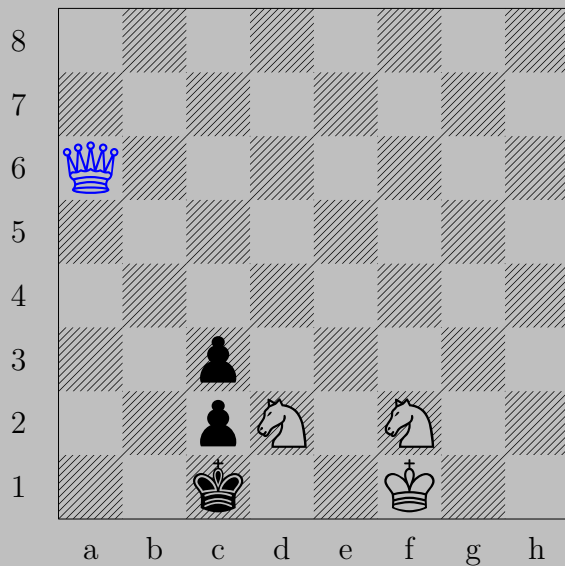
♖b7, ♕a5
♖a7

2721



C. Schlechter, 1908

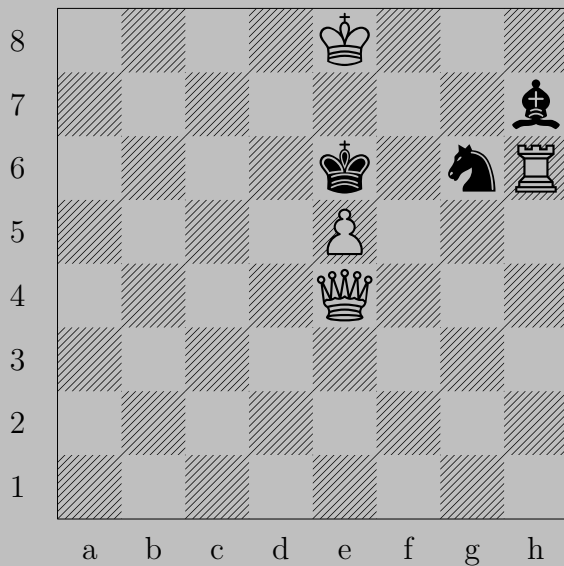
2721



♙a6

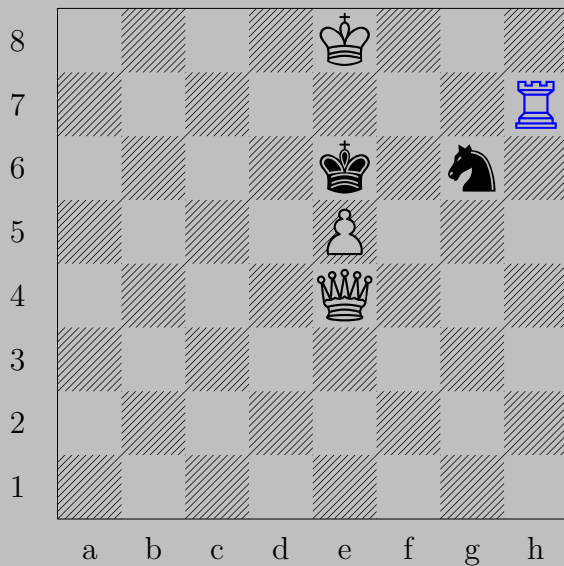
If ♖xd2, ♙a1. If ♔xd2, ♙h6. If ♔b2, ♞d3.

2722



M. Schneider, 1943

2722



♖xh7

If ♞xe5, ♖h6.

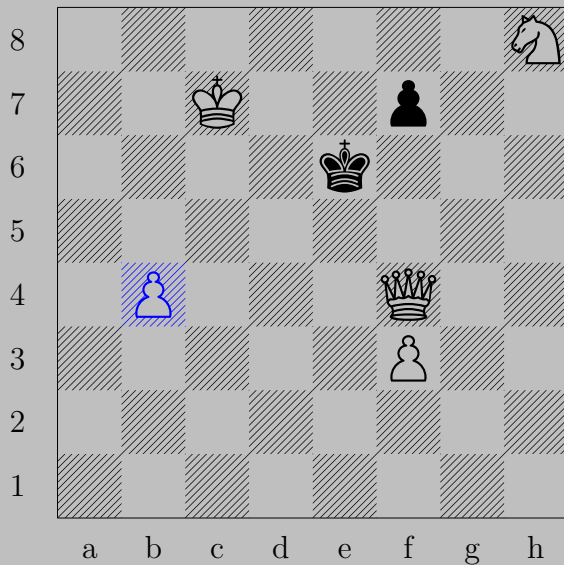
If ♞e7, ♖xe7. Otherwise, ♖e7.

2723



M. Schneider, 1927

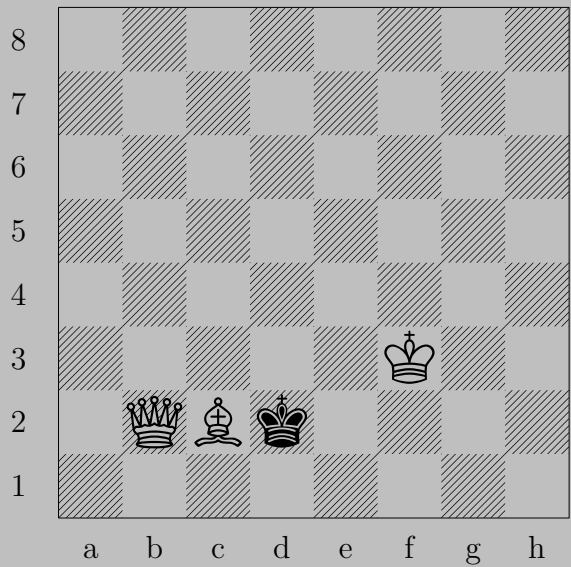
2723



♠b4

If ♔d5 or ♠f6, ♚e4. If ♠f5, ♚d6. If ♔e7, ♚xf7.

2724



T. Schönberger, 1925

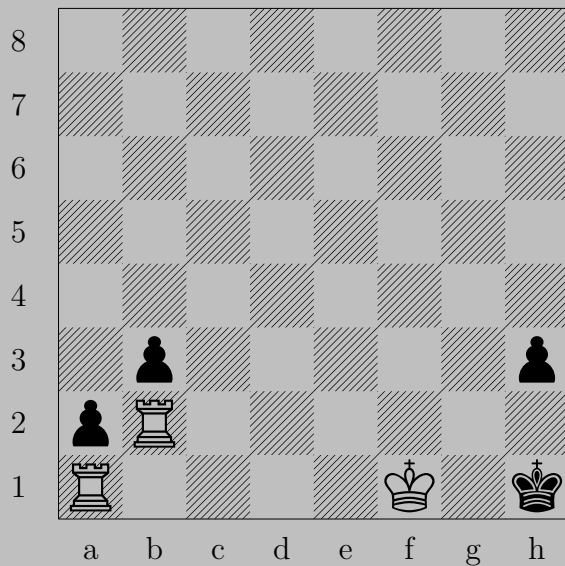
2724



♖a4+

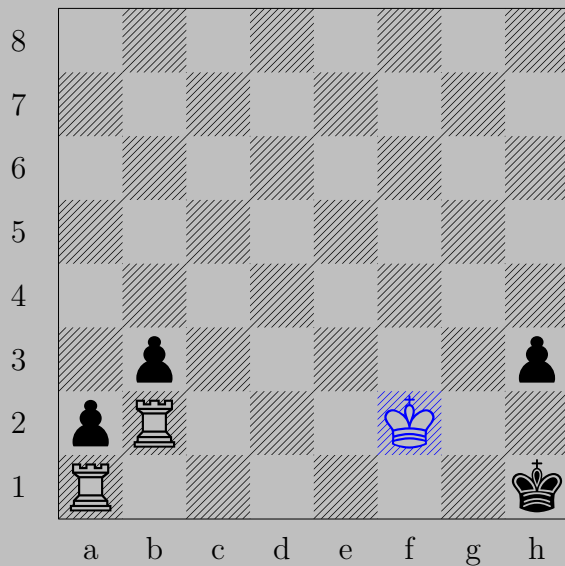
If ♔d3, ♖b5. If ♔e1, ♗c1.

2725



T. Schönberger, 1926

2725



♔f2+, ♕h2
♕f3

2726



T. Schönberger, 1926

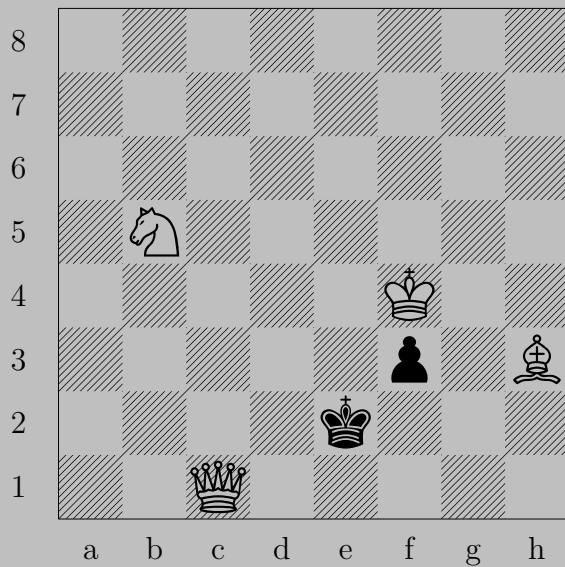
2726



♘d2

If ♔d4, ♖g4. If ♔f5, ♙xd3.

2727



T. Schönberger, 1926

2727



$\text{N}a3$

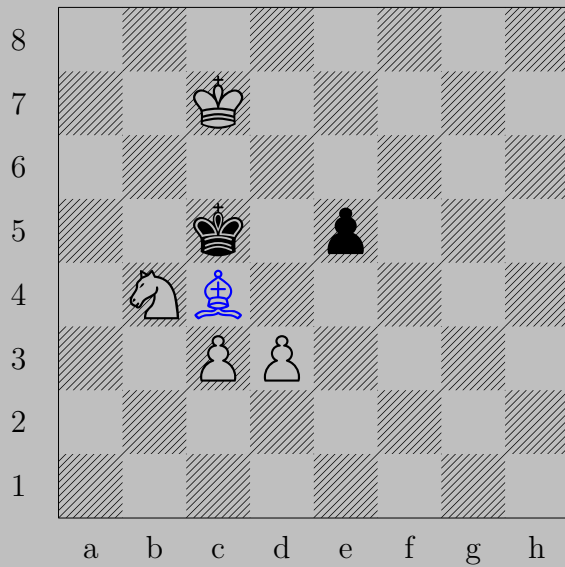
If $\text{K}d3$, $\text{K}e3$. If $\text{K}f2$, $\text{K}f1$. If $\text{B}f2$, $\text{B}f1$.

2728



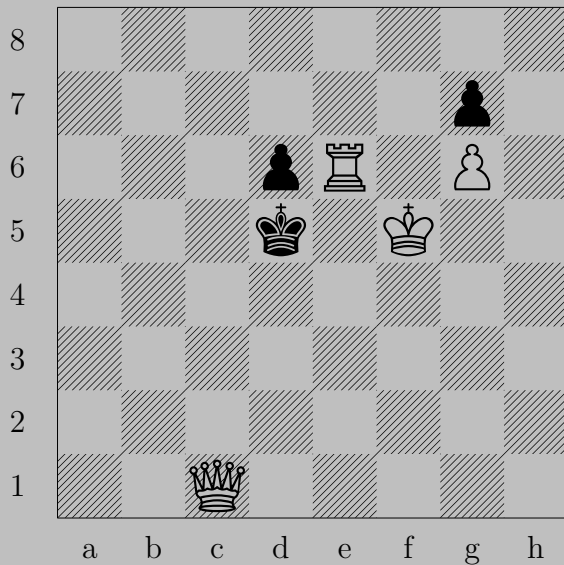
T. Schönberger, 1926

2728



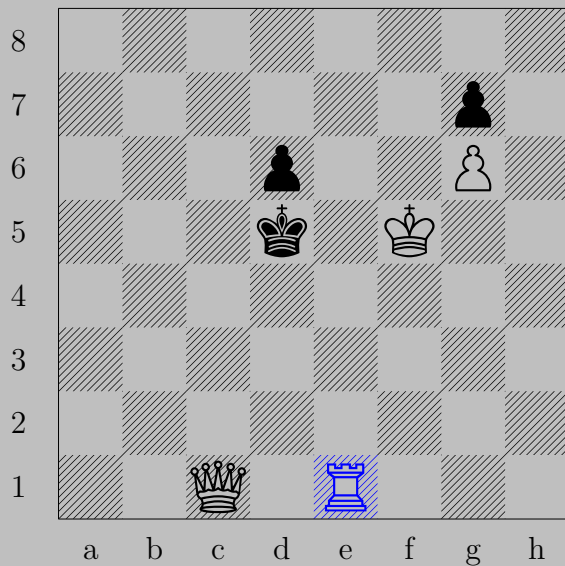
♔c4, ♖e4
♞a6

2729



T. Schönberger, 1926

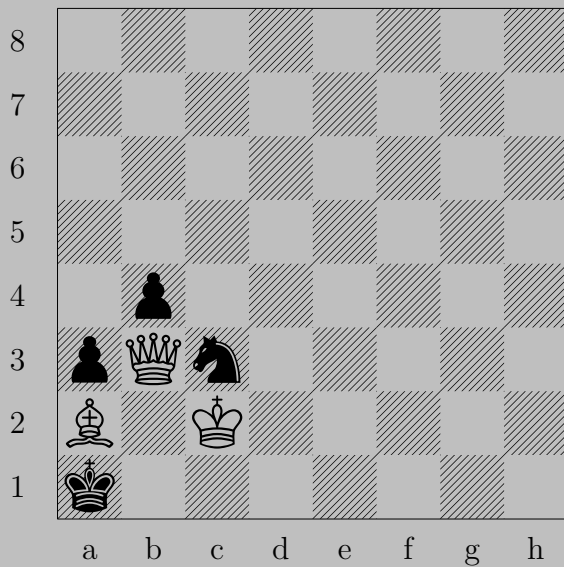
2729



♖e1, ♔d4

♖d1

2730



T. Schönberger, 1926

2730

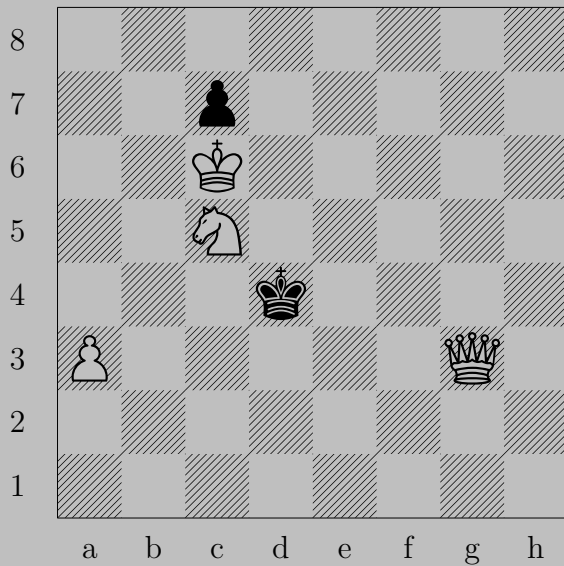


♔b1

If $\text{♞}\times\text{b1}$, $\text{♕}\times\text{b1}$. If ♞a2 , ♕b2 .

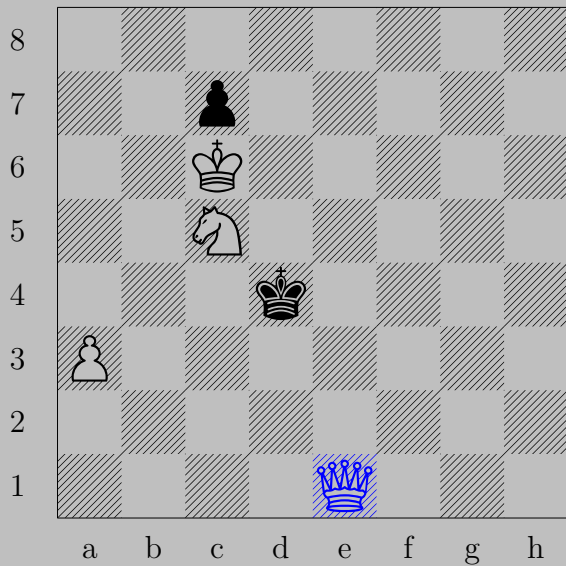
If ♞a2 , $\text{♕}\times\text{a2}$. Otherwise, ♕a2 .

2731



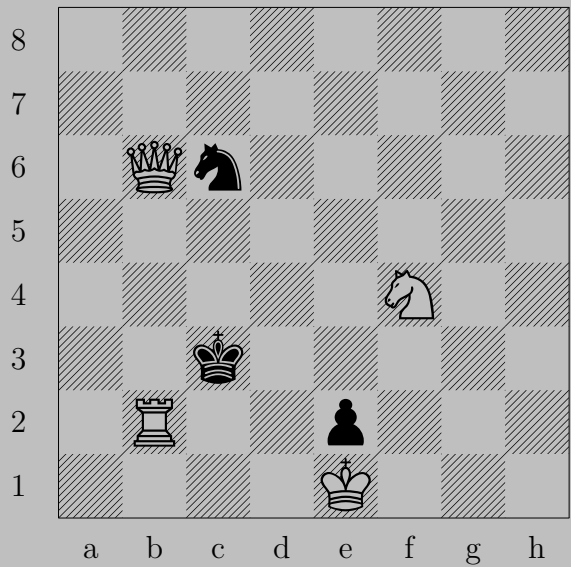
T. Schönberger, 1926

2731



♔e1, ♕c4
♗b4

2732



T. Schönberger, 1935

2732

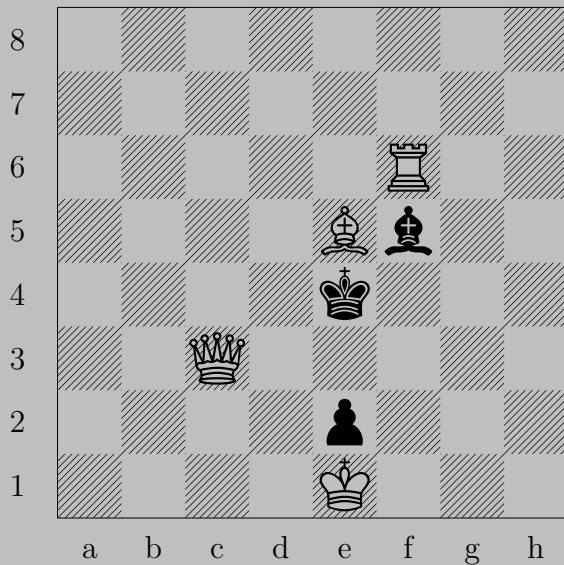


Rb1

If Kc2 , Qb3 . If Kc4 or Na5 or Ne5 , Rc1 .

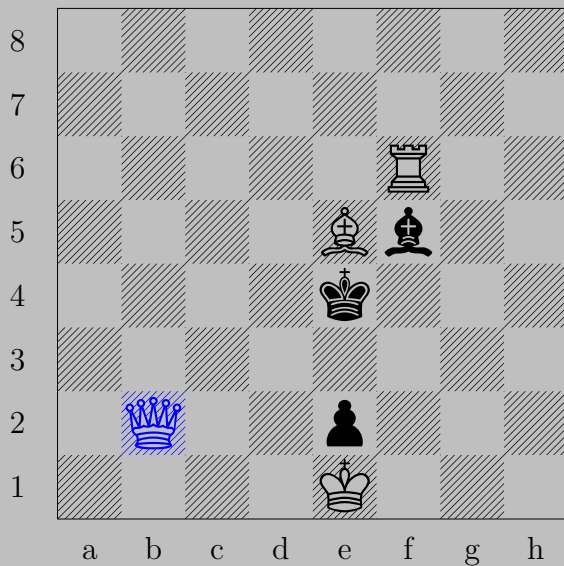
Otherwise, Qc5 .

2733



T. Schönberger, 1935

2733

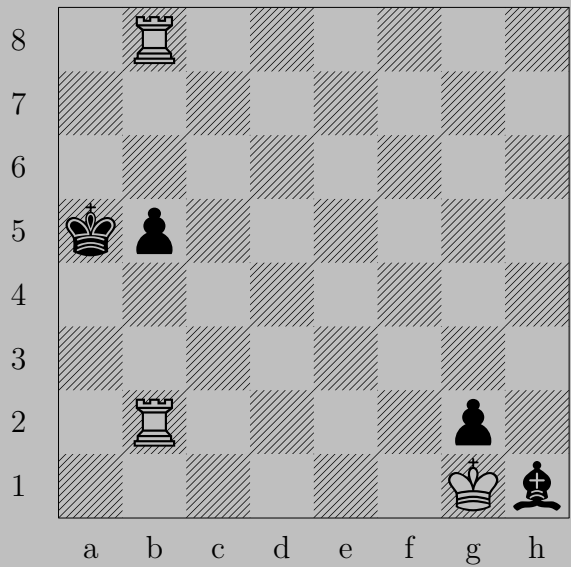


♔b2

If ♕d3 or ♕e3 or ♕f3, ♔xe2.

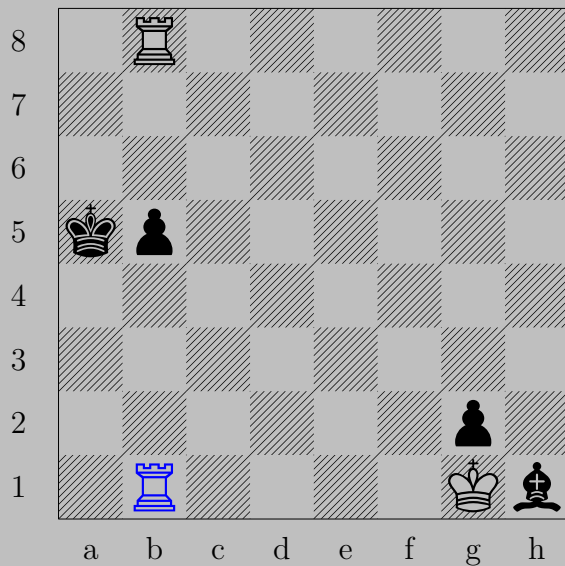
Otherwise, ♔d4.

2734



T. Schönberger, 1935

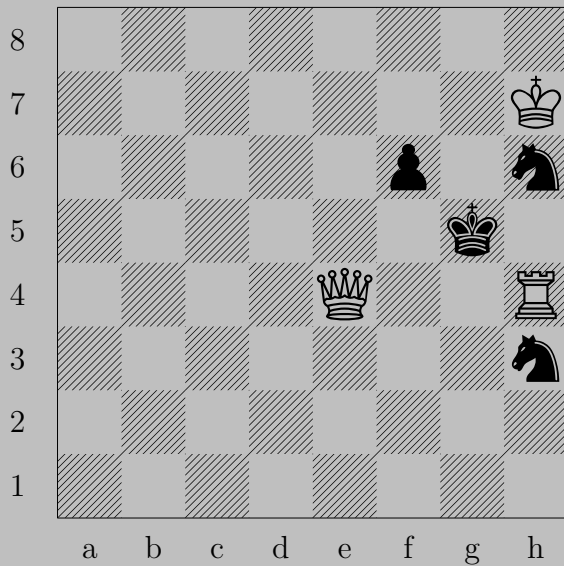
2734



Rb1

If Ka6 or Bb4 , Ra1 . If Ka4 , Ra8 .

2735



T. Schönberger, 1935

2735

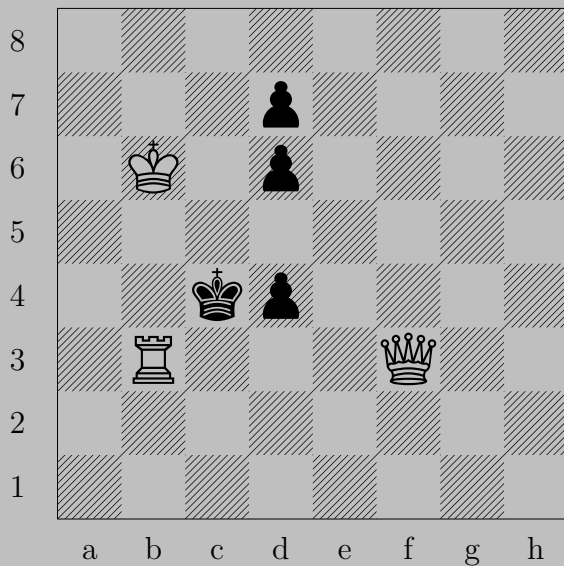


♔d4

If ♔f5, ♕d5. If ♖f5, ♕d8. If ♘f2 or ♘g1, ♕f4. If ♘f4, ♕xf4.

If ♘g4, ♕xg4. Otherwise, ♕g4.

2736



T. Schönberger, 1935

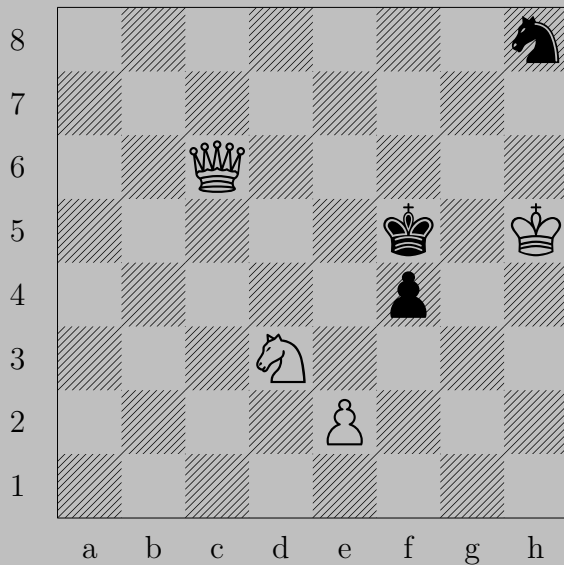
2736



$\text{R}a3$

If $\text{K}b4$ or $\text{P}d5$, $\text{Q}b3$. If $\text{P}d3$, $\text{Q}e4$.

2737



T. Schönberger, 1935

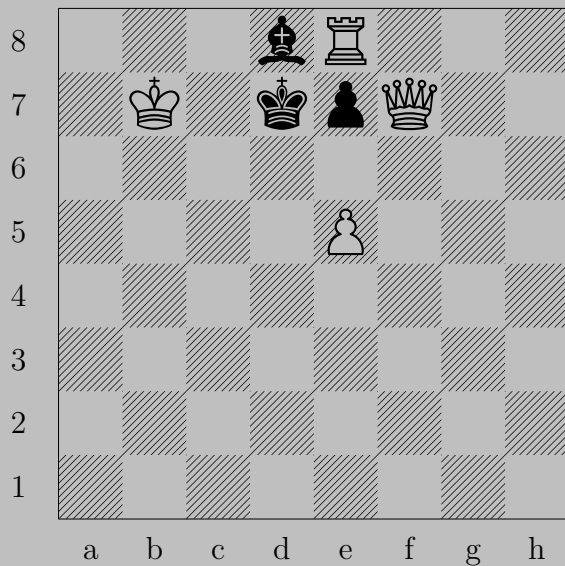
2737



♙d6

If ♔e4 or ♖f3, ♚e5. If ♞f7, ♚g6. If ♞g6, ♚xg6.

2738



T. Schönberger, 1935

2738



♚g6

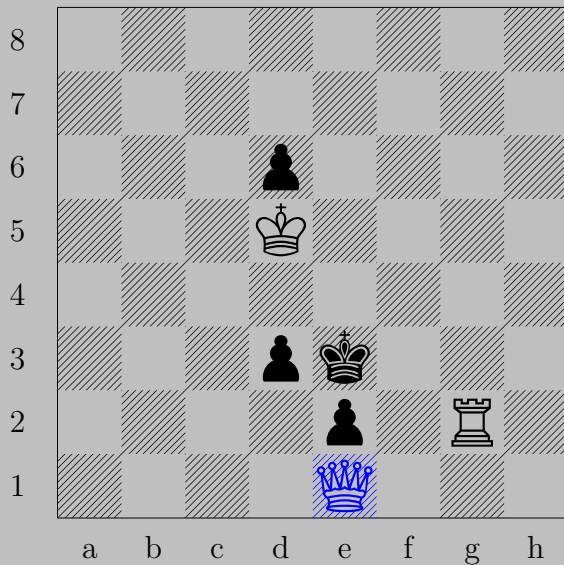
If ♙a5-c7, ♚c6. If ♜e6, ♚x6.

2739



T. Schönberger, 1935

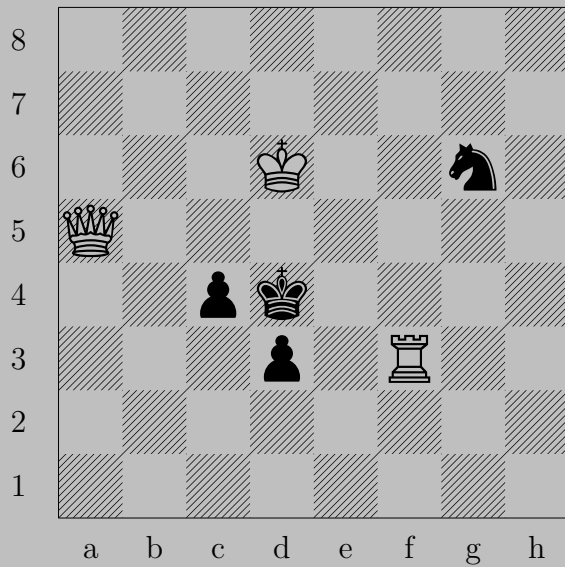
2739



♔e1

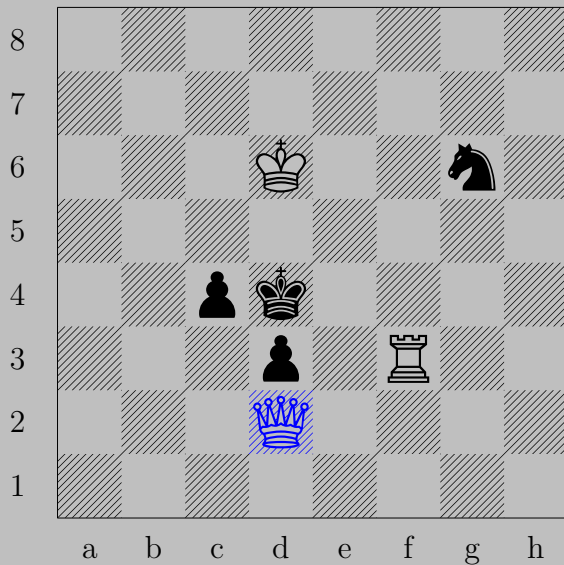
If ♔f3 or ♔f4, ♚f2. If ♖d2, ♚g3.

2740



T. Schönberger, 1935

2740

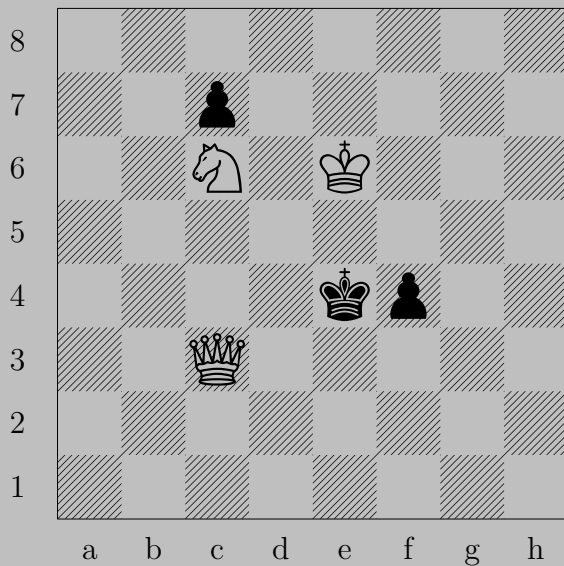


♔d2

If ♔e4, ♔e3. If ♖c3, ♔×d3.

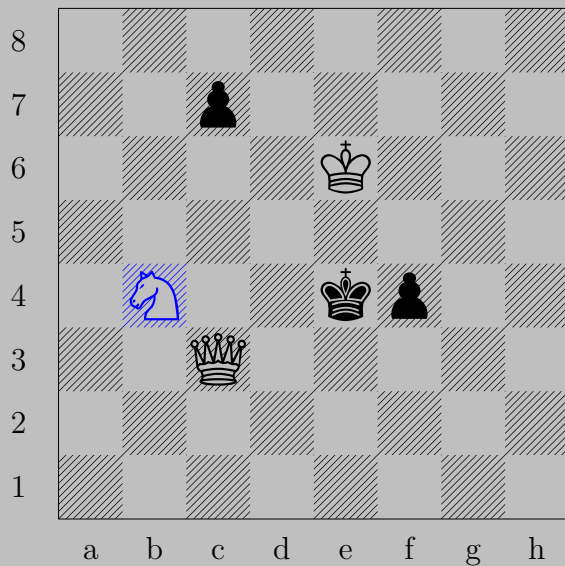
If ♞f4, ♖×f4. Otherwise, ♖f4.

2741



T. Schönberger, 1935

2741



♞b4

If ♠f3, ♚e5. If ♠c6 or ♠c5, ♚d3.

2742



T. Schönberger, 1935

2742

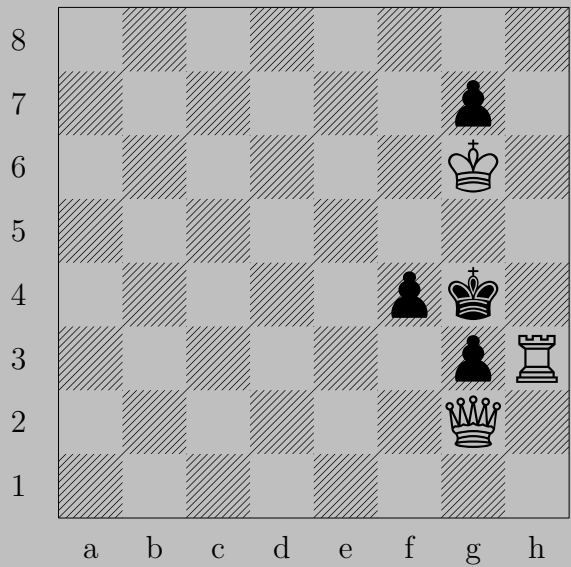


♔g2

If ♔d1, ♔d2. If ♞f2, ♔g1.

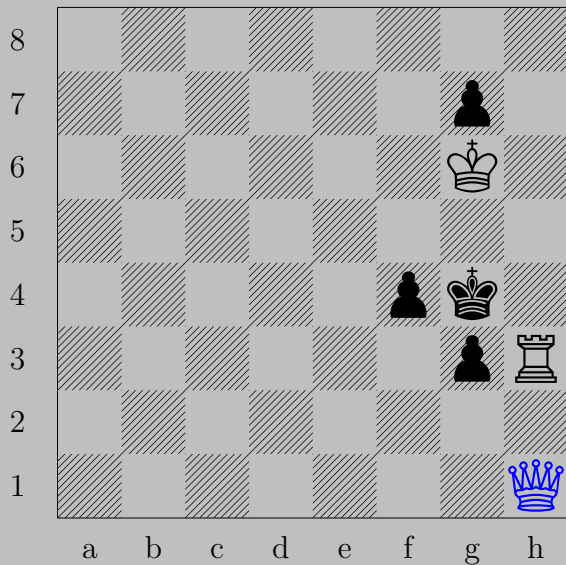
Otherwise, ♔e2.

2743



T. Schönberger, 1935

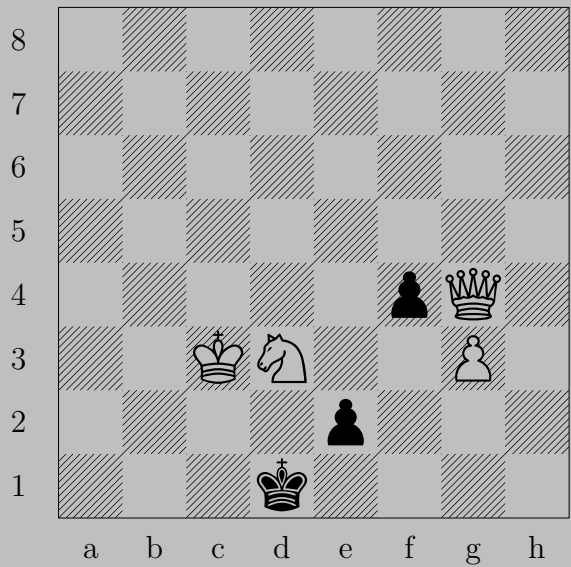
2743



♔h1

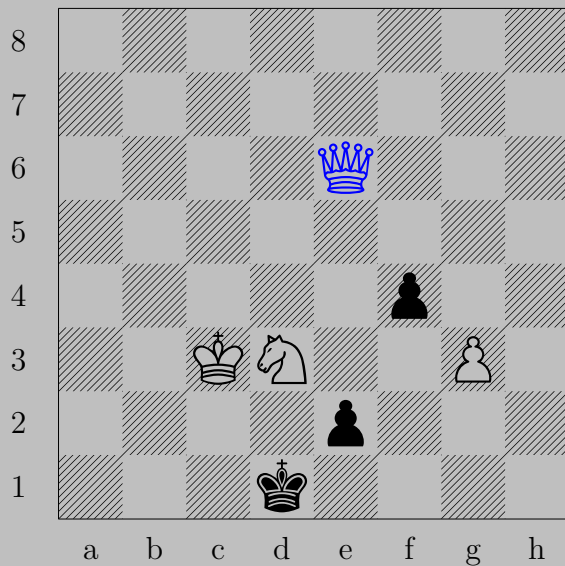
If ♘f3, ♖h4. If ♘g2, ♔×g2.

2744



T. Schönberger, 1935

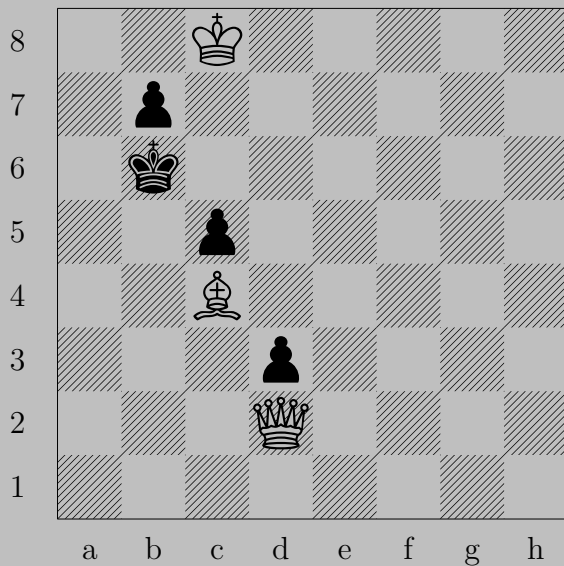
2744



e6

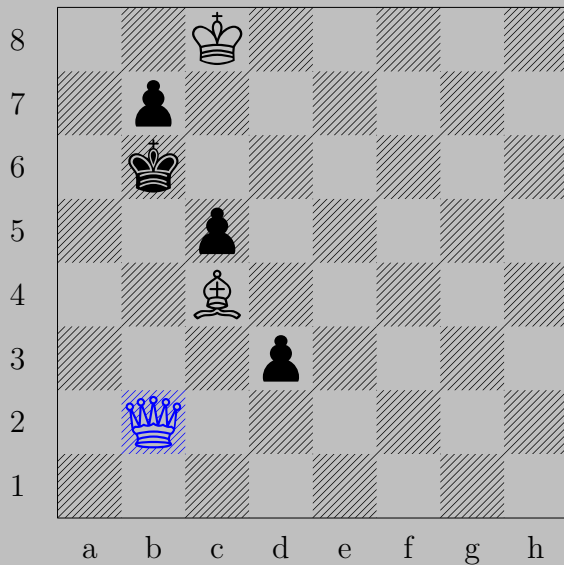
If $\triangleleft e1(\text{King})+$ or $\triangleleft e1(\text{Knight})$, $\text{King} \times e1$. If $\triangleleft \times g3$ or $\triangleleft f3$, $\text{King} b3$.

2745



T. Schönberger, 1935

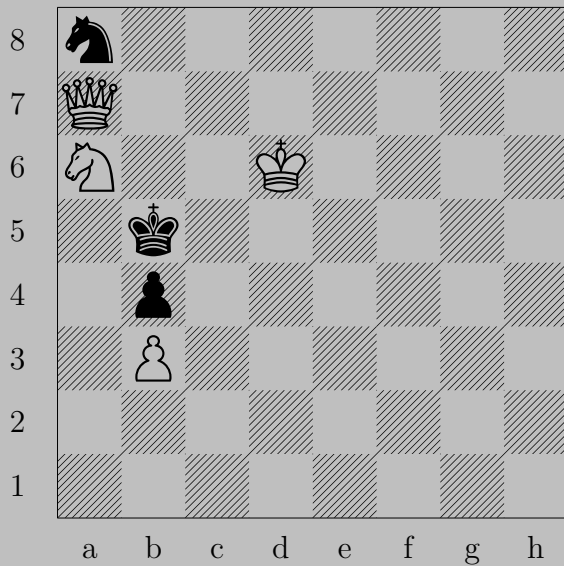
2745



♔b2+

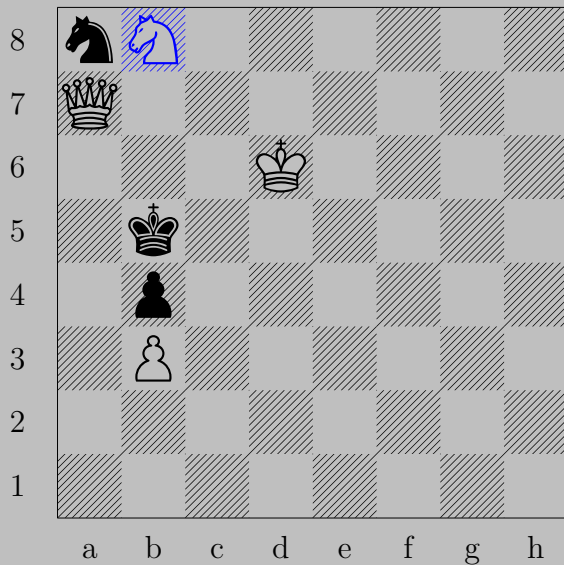
If ♔a5, ♔b5. If ♔a7, ♔x b7. If ♔c6, ♔f6.

2746



T. Schönberger, 1935

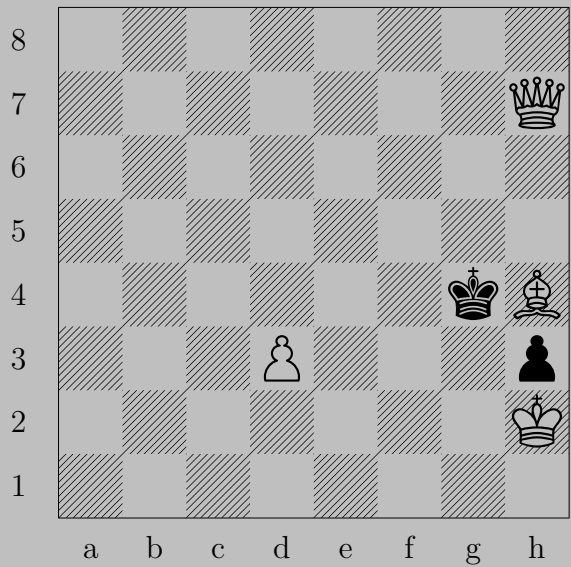
2746



♞b8

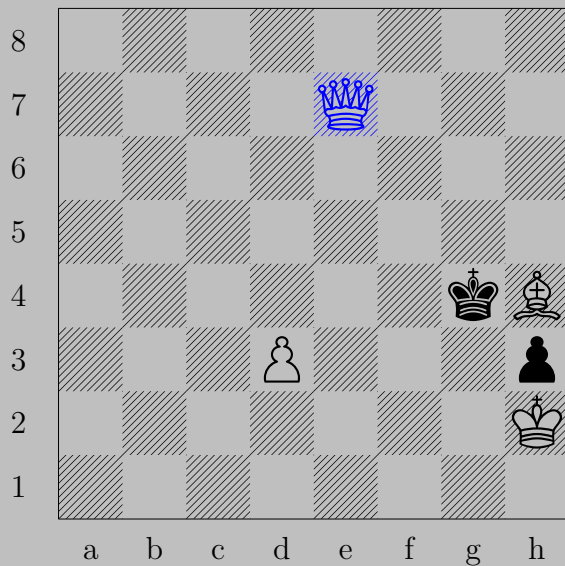
If ♞c7 , ♚c5 . If ♞b6 , ♚a6 .

2747



T. Schönberger, 1935

2747



♔e7

If ♔h5, ♕g5. If ♔f3-f5, ♕e4.

2748



T. Schönberger, 1935

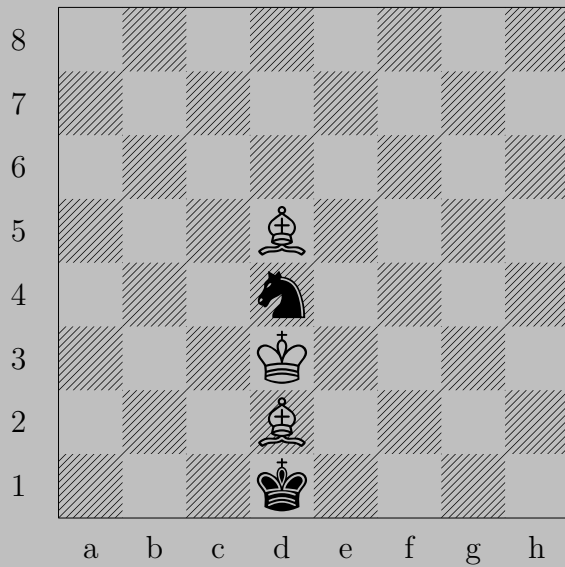
2748



Nf4

If Nf2 , Ke2 . If Ng3 , Kg1 .

2749



T. Schönberger, 1925

2749

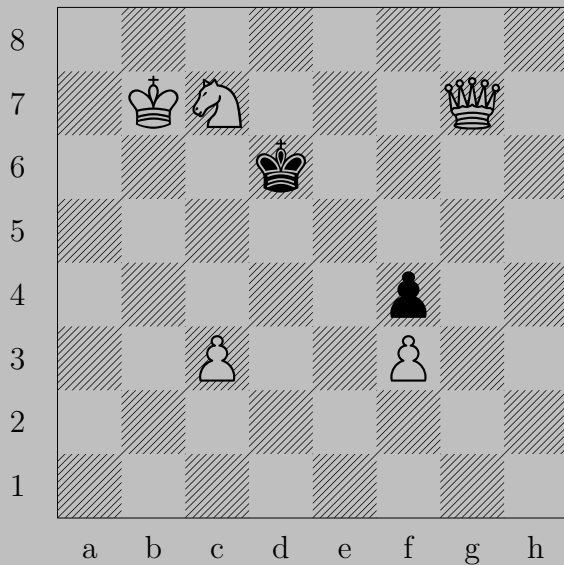


♔e7

If ♖c2 or ♖b3, ♔h5.

Otherwise, ♔b3.

2750



T. Schönberger, 1925/26

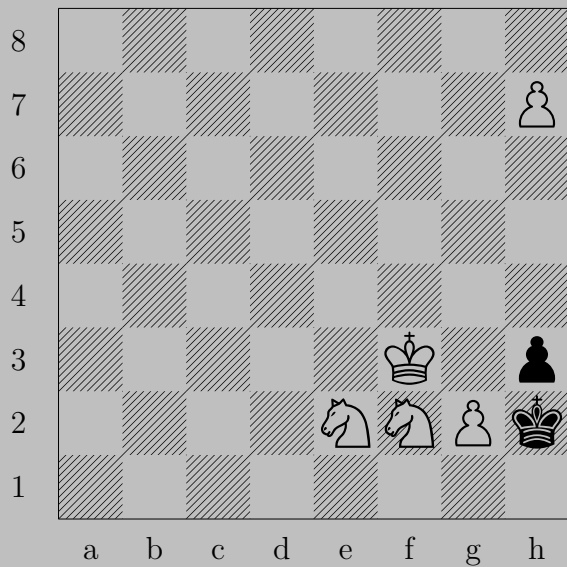
2750



♙e7

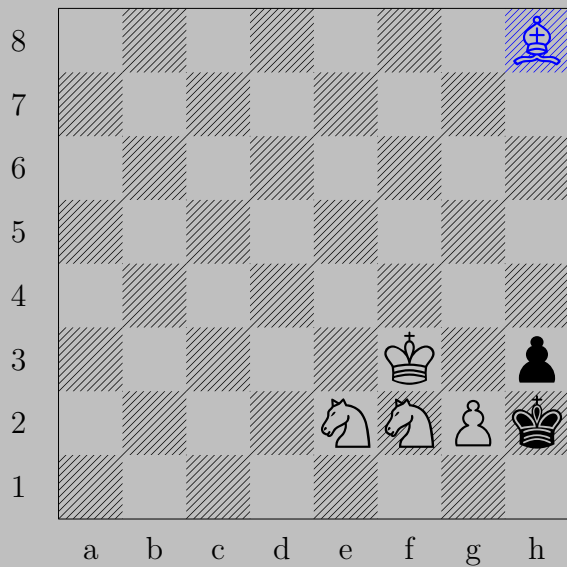
If ♔c5, ♚d5. If ♔e5, ♚e6.

2751



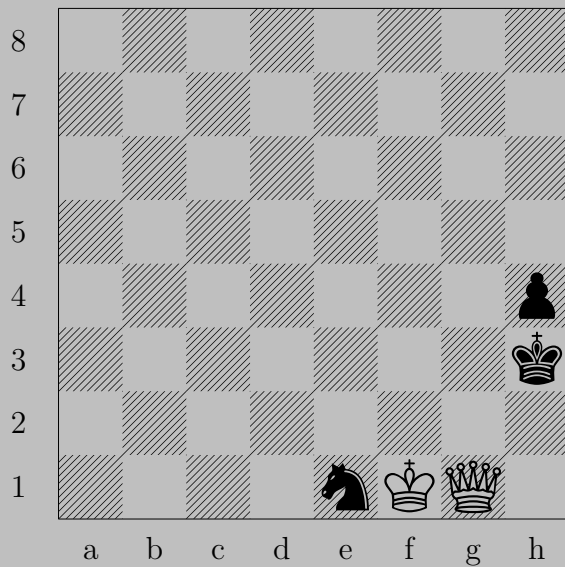
T. Schönberger, 1925

2751



$\text{♔h8}(\text{♖}), \text{♖}\times\text{g2}$
 ♖e5

2752





T. Schönberger, 1925

2752

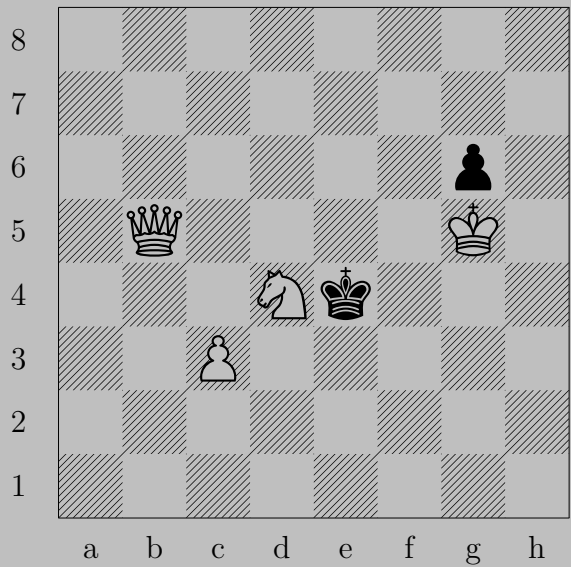


g5

If h2, xh4.

If g2, xg2. Otherwise, g2.

2753



T. Schönberger, 1925

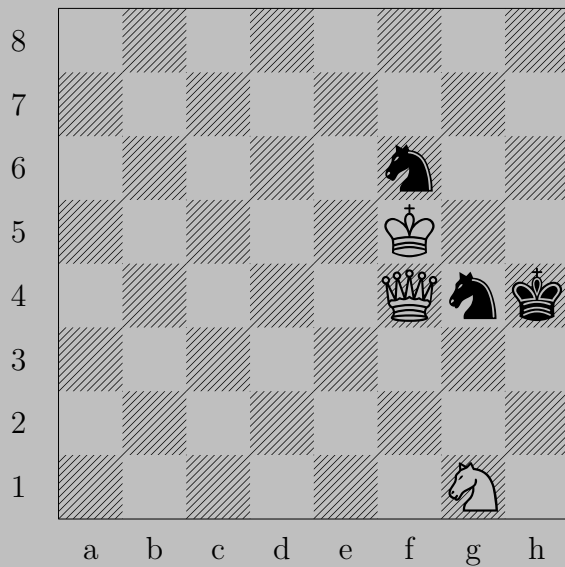
2753



♙c4

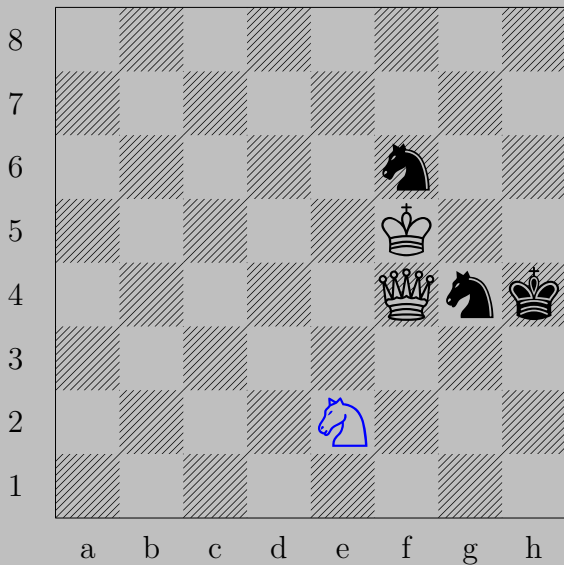
If ♔e3, ♙e2. If ♔e5, ♙e6.

2754



T. Schönberger, 1925

2754

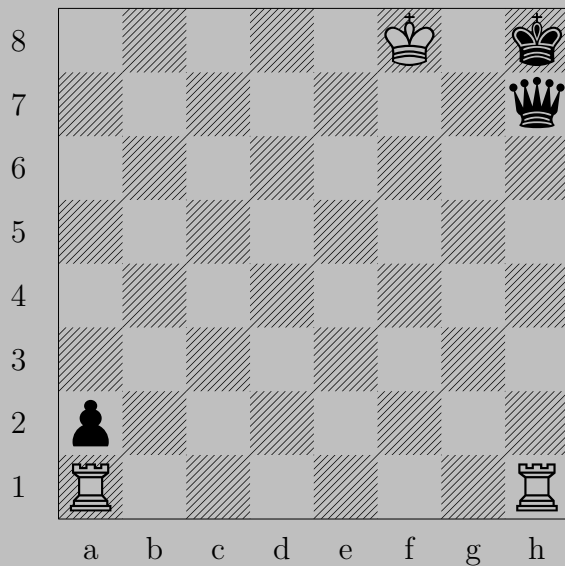


$\text{N}e2$

If $\text{K}h3$, $\text{Q}g3$. If $\text{K}h5$, $\text{Q}g5$.

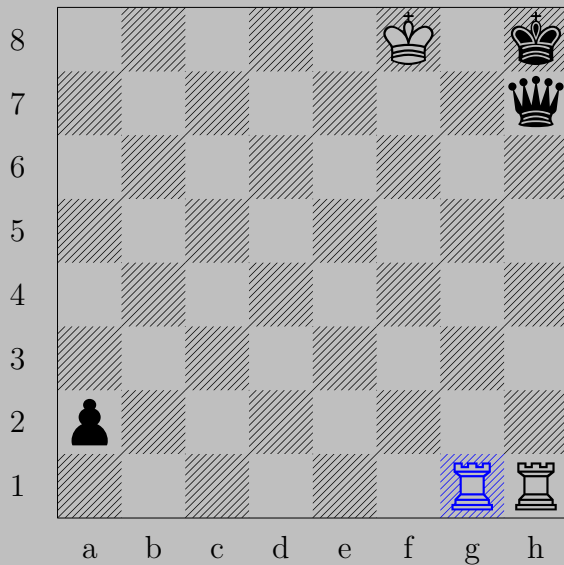
Otherwise, $\text{Q}xg4$.

2755



T. Schönberger, 1925

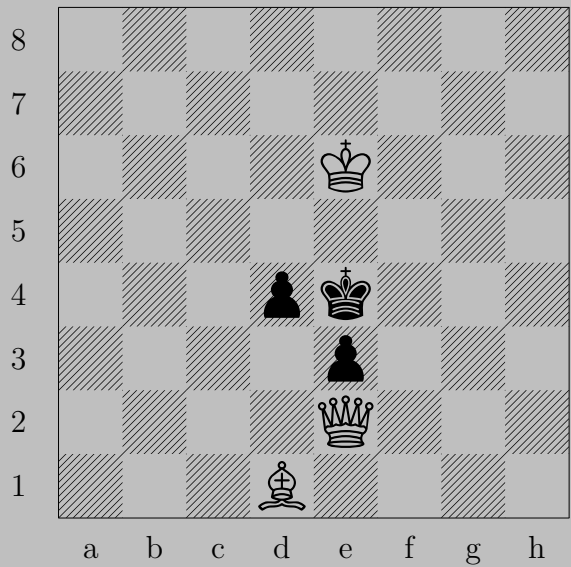
2755



$\text{R}(a1)g1$

If $\text{Q}a1(\text{Q})$, $\text{R}g8$. If $\text{Q}xh1$, $\text{R}xh1$. If $\text{Q}h2-h6$, $\text{R}x\text{Q}$.

2756



T. Schönberger, 1925

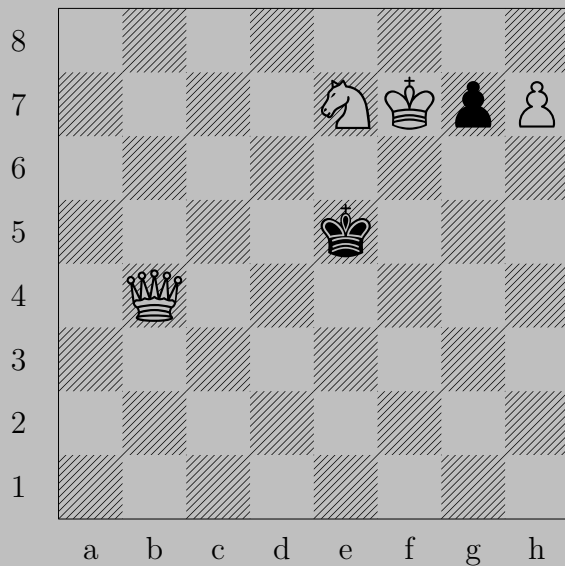
2756



♔g2+

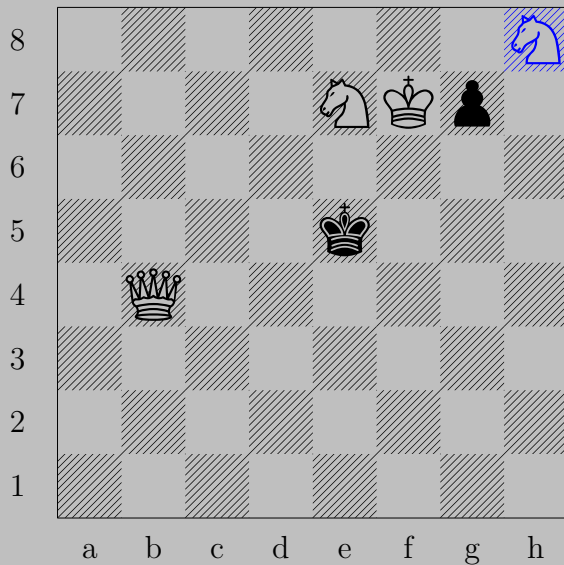
If ♙d3, ♕c2. If ♔f4, ♕g4.

2757



T. Schönberger, 1925

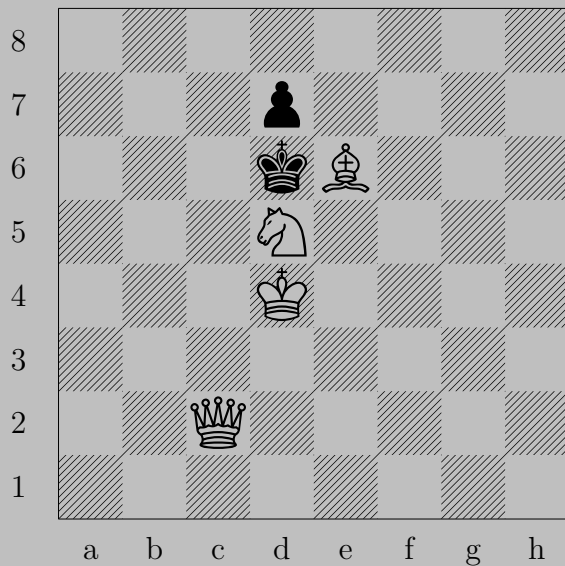
2757



$\triangleleft h8(\text{♞})$

If $\triangleleft g6$, $\text{♞} \times g6$. If $\triangleleft g5$, $\text{♞} g6$.

2758



T. Schönberger, 1925

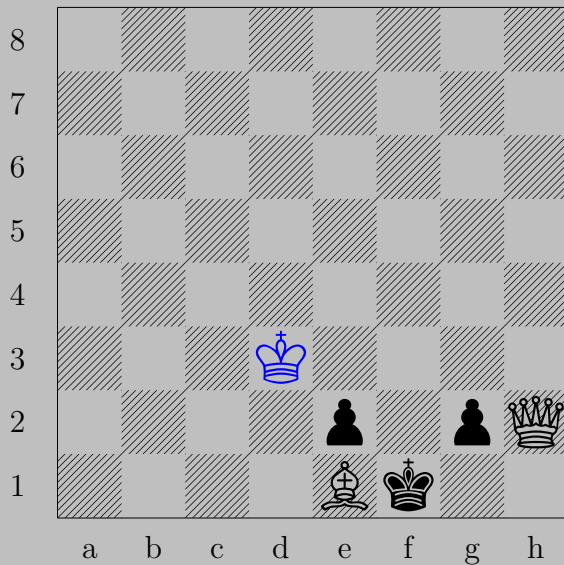
2758



$\text{K}h7$

if $\text{K} \times e6$, $\text{K}g6$. If $\text{P} \times e6$, $\text{K}c7$. If $\text{K}c6$, $\text{K} \times d7$.

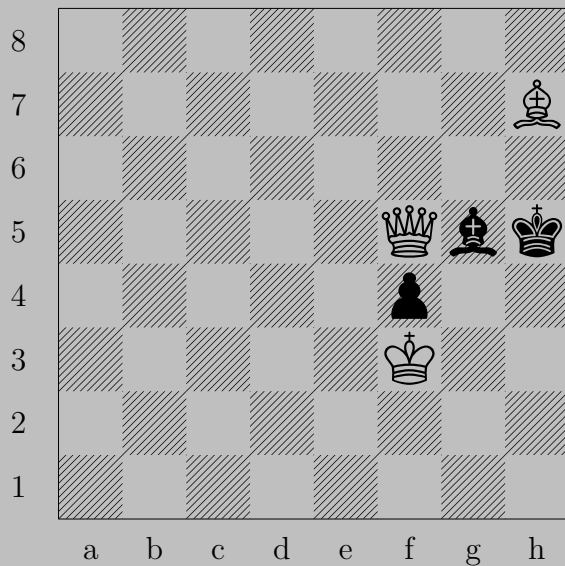
2759



♔d3

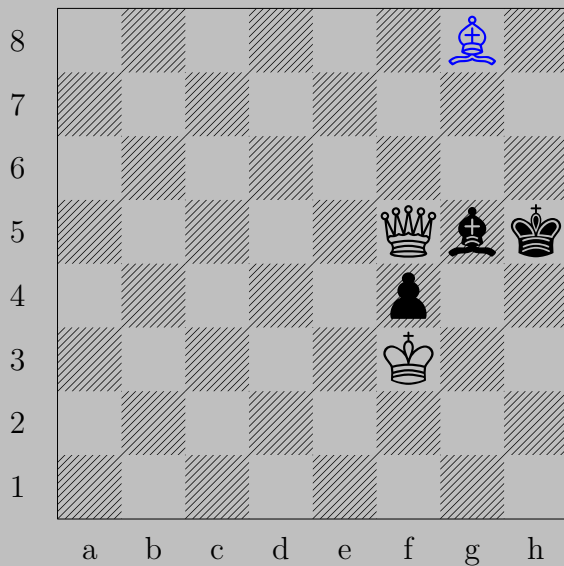
If ♕xe1, ♔g1. If ♖g1(♔), ♕xe2. If ♖g1(♘), ♔f2.

2760



T. Schönberger, 1925

2760



♗g8

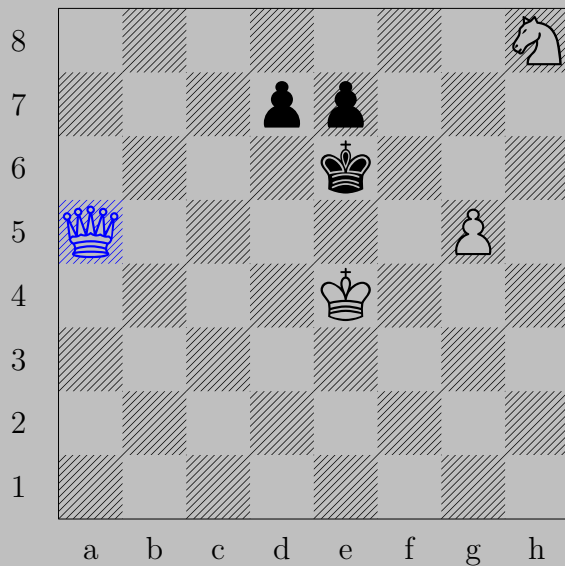
If ♔h6 , ♕h7 . If ♔h4 , ♕g4 .

2761



T. Schönberger, 1925

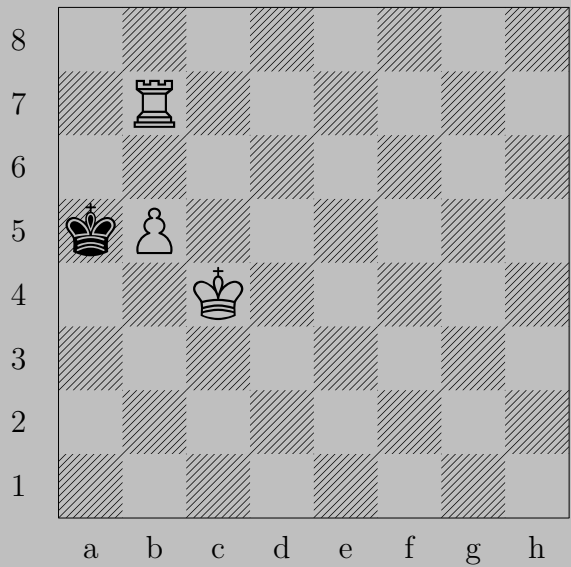
2761



♙a5

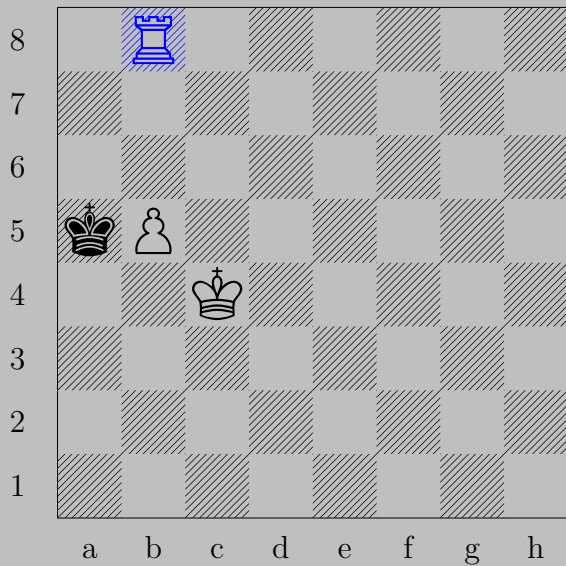
If ♔d6, ♙b6. If ♖d6, ♙f5. If ♖d5+, ♙x d5.

2762



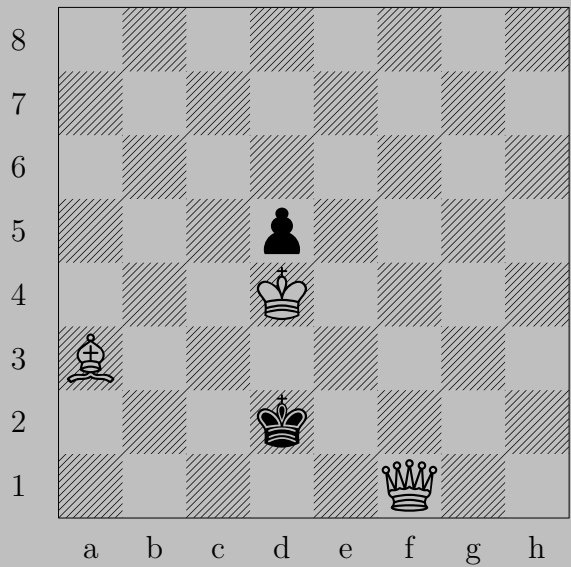
T. Schönberger, 1926

2762



♖b8, ♔a4
♜a8

2763



T. Schönberger, 1926

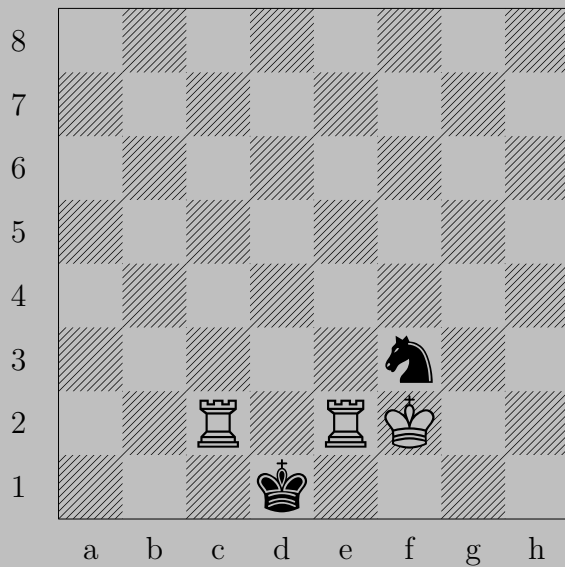
2763



♙f3

If ♖c2, ♙d3. If ♖e1, ♘b4.

2764



T. Schönberger, 1926

2764



♖a2

If ♘d2, ♖e1.

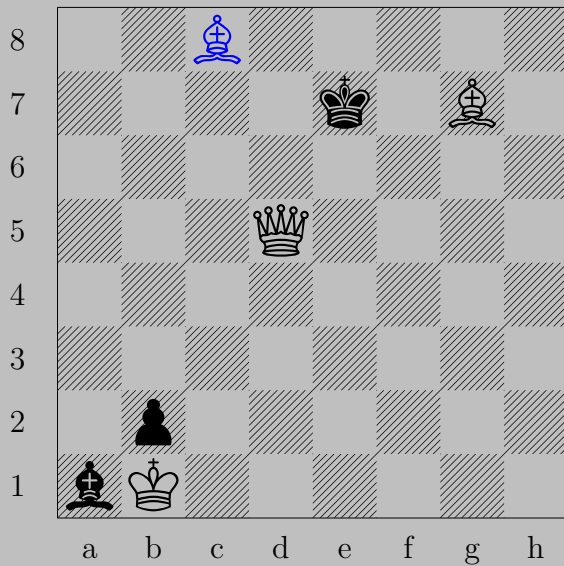
Otherwise, ♖a1.

2765



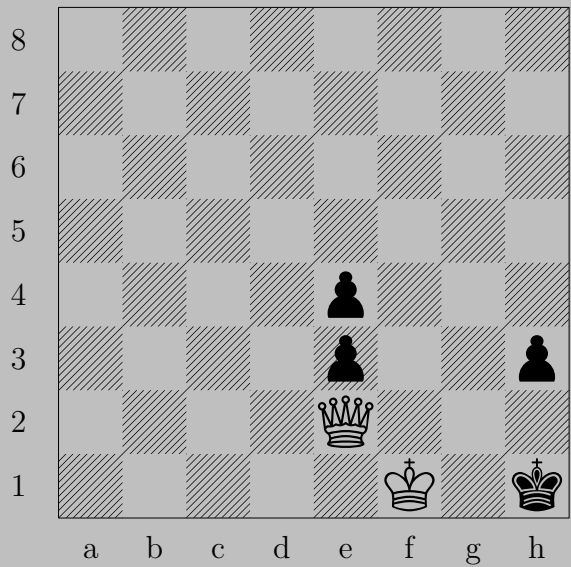
T. Schönberger, 1926

2765



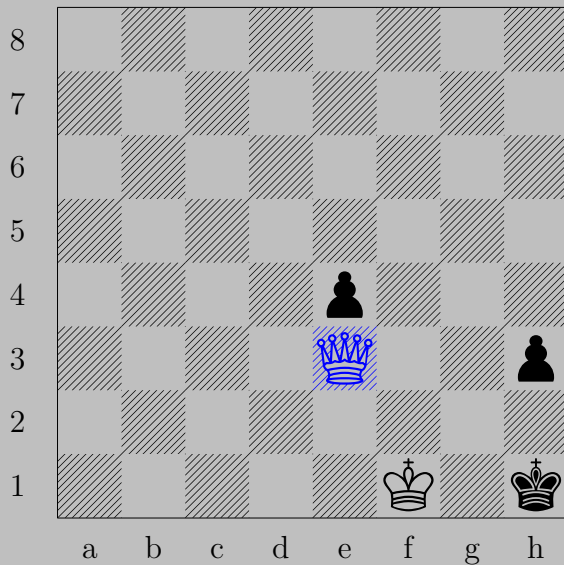
♗c8 (♗), ♔e8
 ♕d7

2766



T. Schönberger, 1926

2766



♙×e3

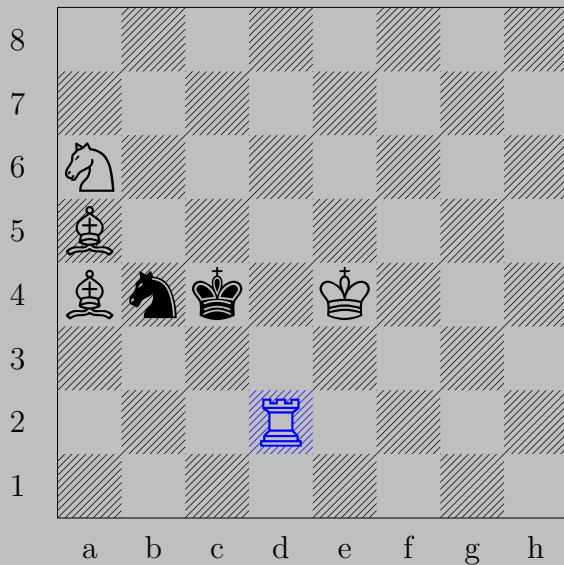
If ♔h2, ♙g1. If ♖h2, ♙×e4.

2767



T. Schönberger, 1926

2767

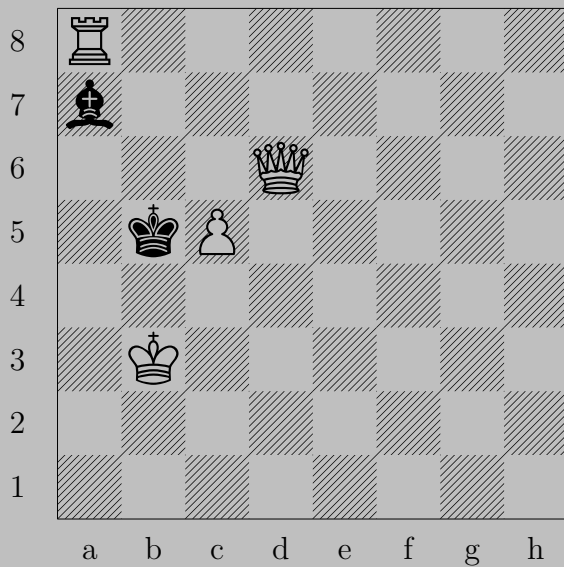


Rd2

If Na2 or Nd5 , Rd4 .

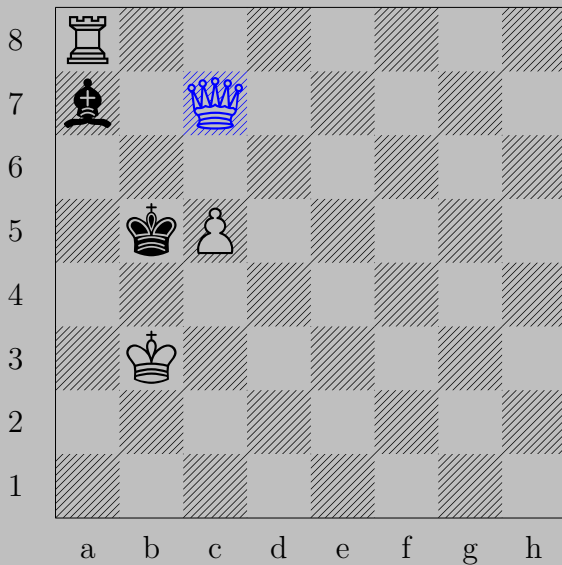
If Nc2 , Bxc2 . Otherwise, Rc2 .

2768



T. Schönberger, 1926

2768

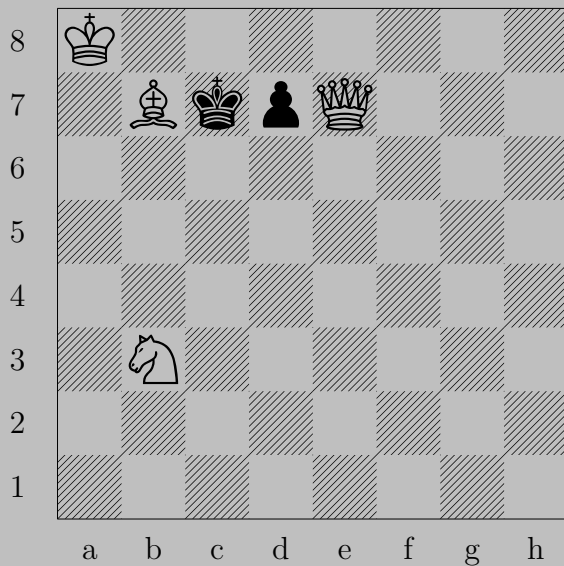


♔c7

If ♕xc5, ♖a5.

If ♕b6, ♗xb6. Otherwise, ♗b6.

2769



T. Schönberger, 1926

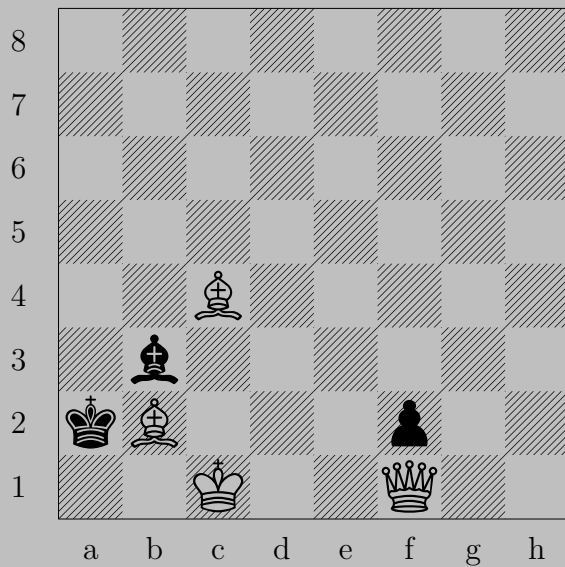
2769



♙a6

If ♔b6, ♚d6. If ♔c6, ♚c5.

2770



T. Schönberger, 1926

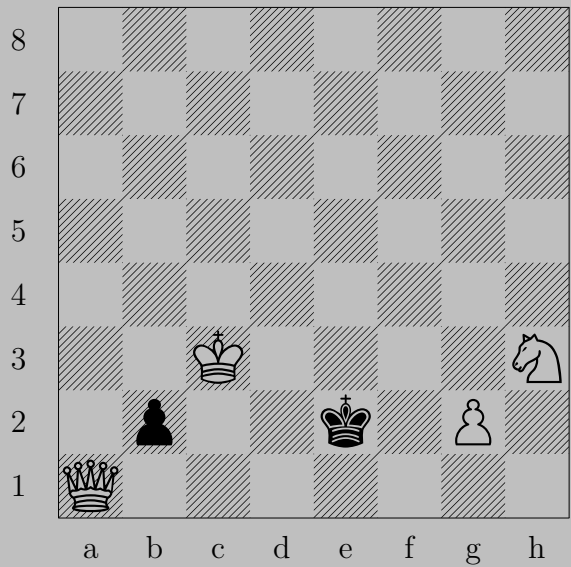
2770



♔d1

If ♖f1(♔), ♙×b3. If ♙×c4, ♔a4.

2771



T. Schönberger, 1925

2771



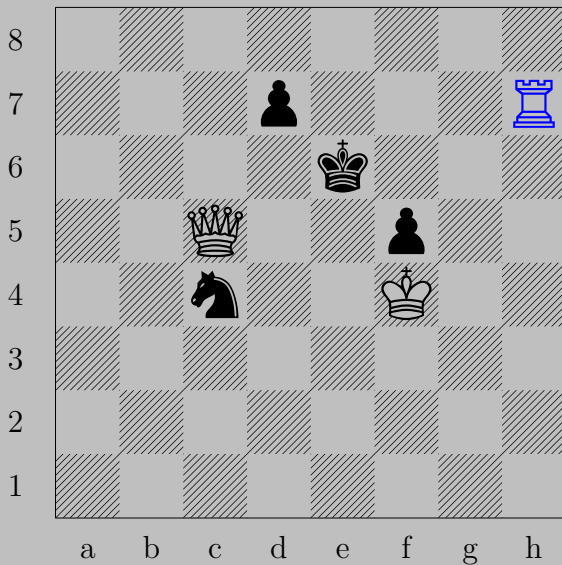
♔b1, ♔e3
♔d3

2772



T. Schönberger, 1925

2772

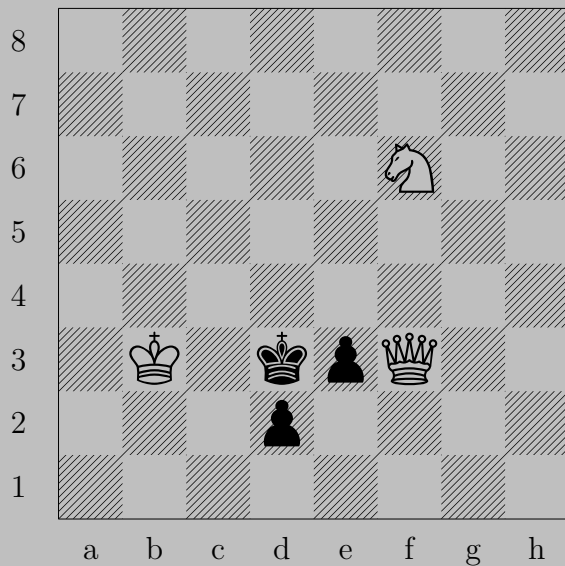


♖h7

If ♔f6 or ♜d6, ♔xf5. If ♜d5, ♔e7.

If ♞e5, ♔xe5. Otherwise, ♔e5.

2773



T. Schönberger, 1925

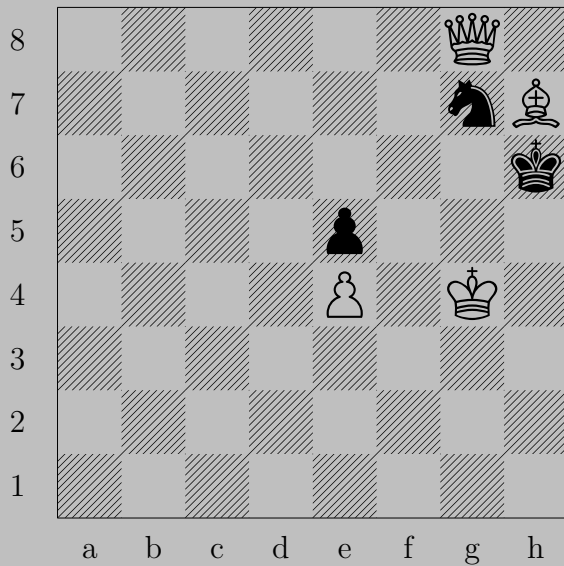
2773



♔g4

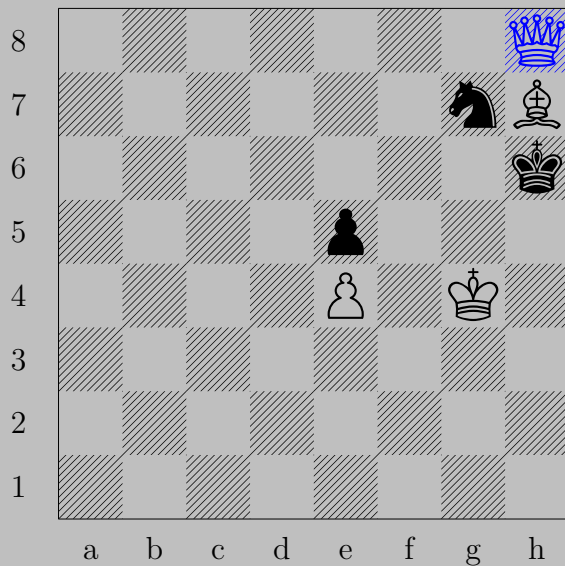
If $\text{♚d1}(\text{♔})$, ♔xd1 . If ♚e2 , ♔e4 .

2774



T. Schönberger, 1935

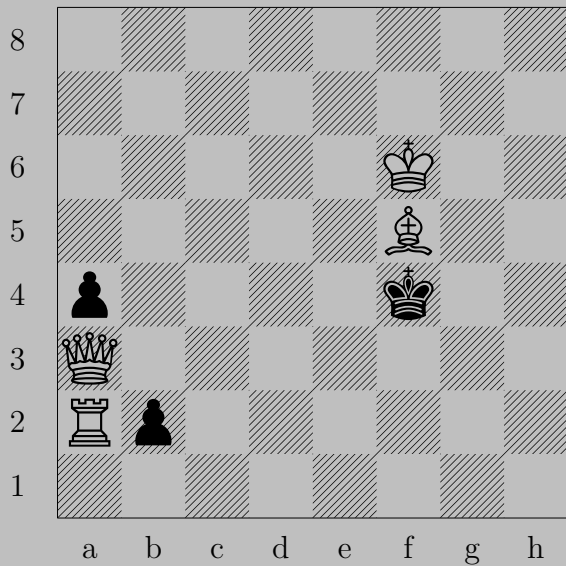
2774



h8

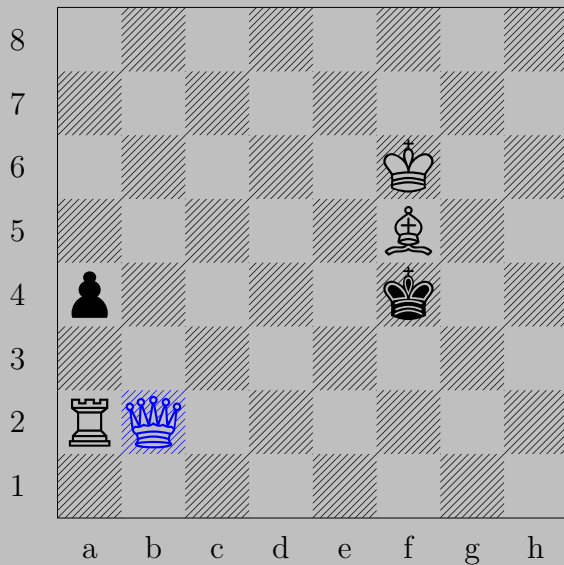
If f5, x f5. Otherwise, f5.

2775



T. Schönberger, 1933

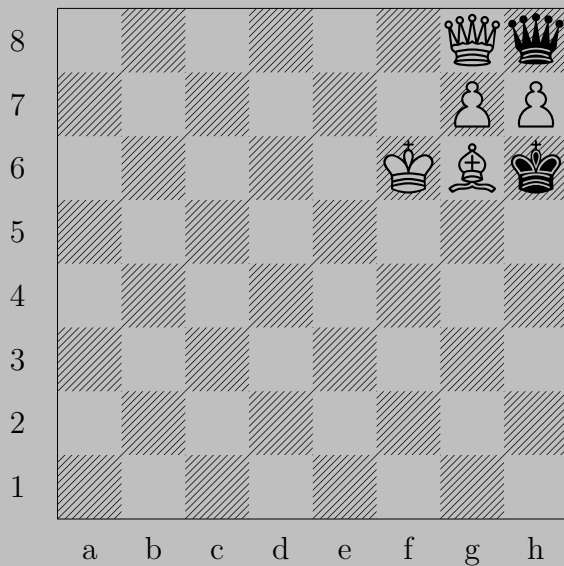
2775



♙×b2, ♖a3 or ♗e3-g3

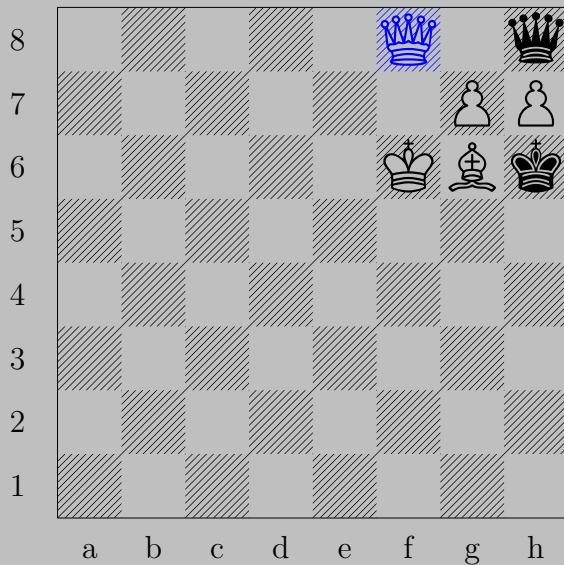
♙f2.

2776



T. Schönberger, 1925/26

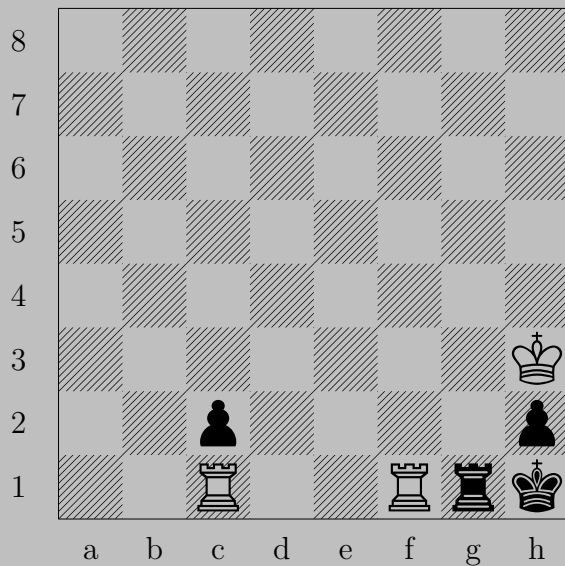
2776



f8

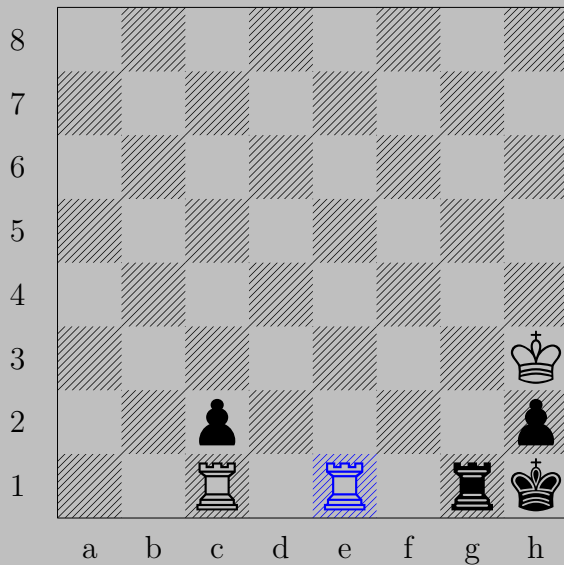
If x f8+, x f8(). If x g7+, x g7. If g8, x g8(). If x h7, g8().

2777



T. Schönberger, 1925

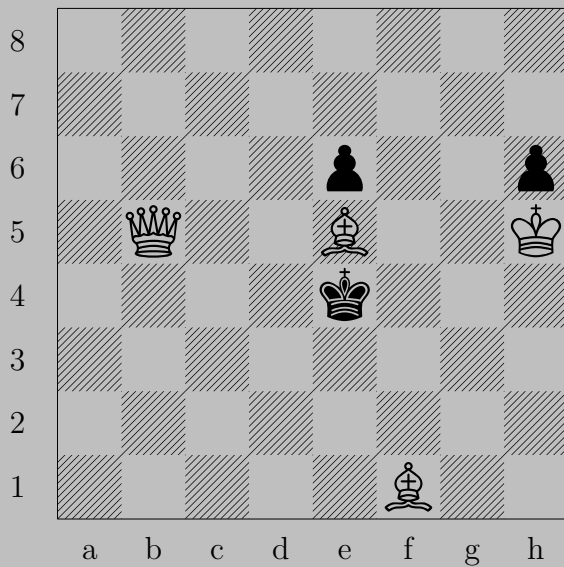
2777



$\text{R}(f1)e1$

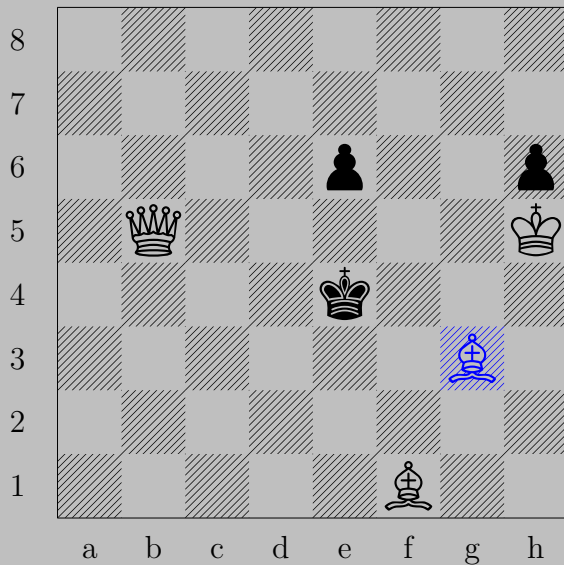
If $\text{R}\times e1$, $\text{R}\times e1$. If $\text{R}f1$, $\text{R}\times f1$.

2778



T. Schönberger, 1923

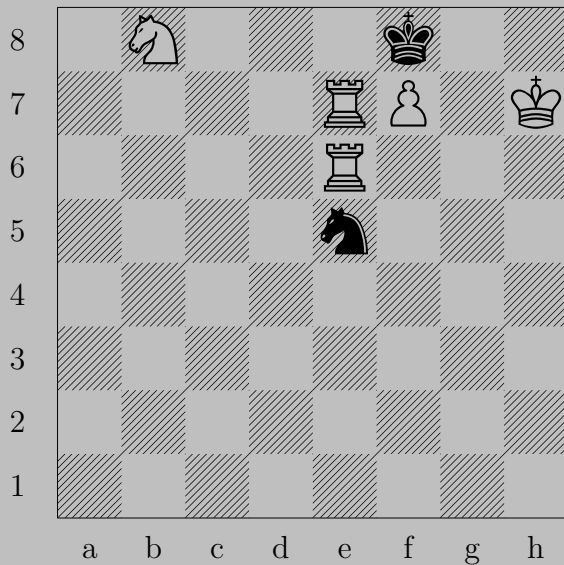
2778



♔g3

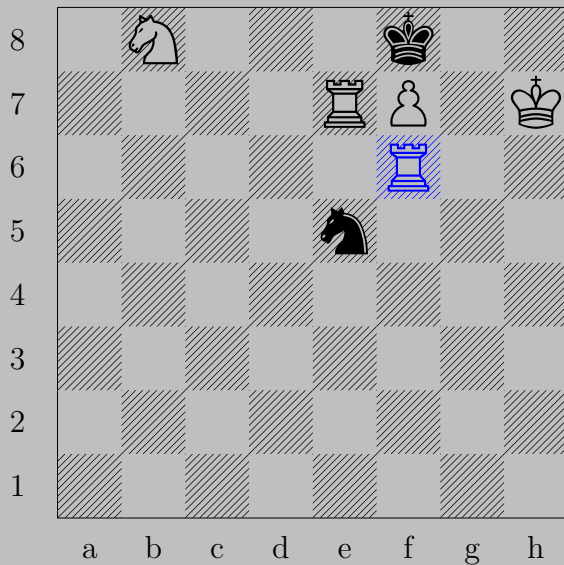
If ♙e5 or ♚e3 or ♚f3 , ♞d3 . If ♚d4 , ♞e5 .

2779



T. Schönberger, 1925/26

2779

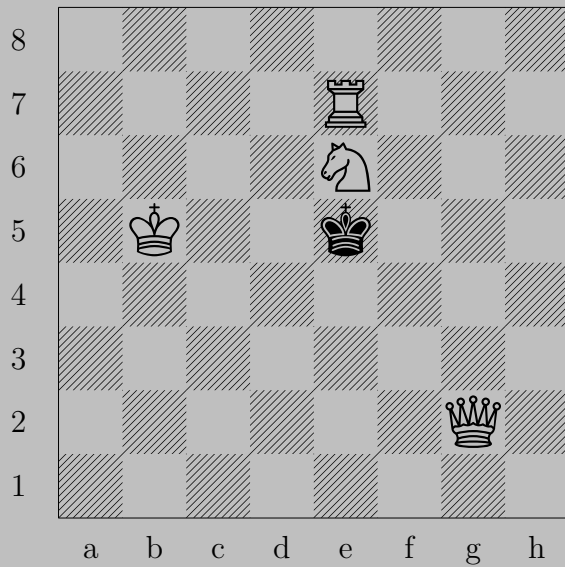


Rf6

If $\text{K} \times \text{e7}$, $\text{P} \text{f8}(\text{K})$. If $\text{N} \times \text{f7}$, $\text{R}(\text{f6}) \times \text{f7}$.

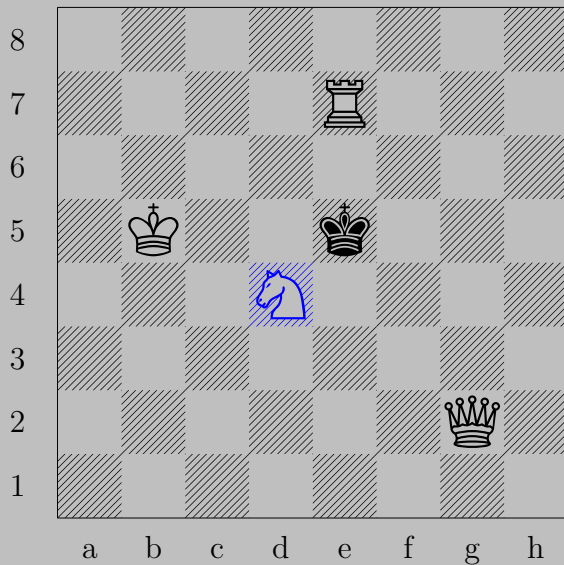
Otherwise, $\text{R} \text{e8}$.

2780



T. Schönberger, 1925

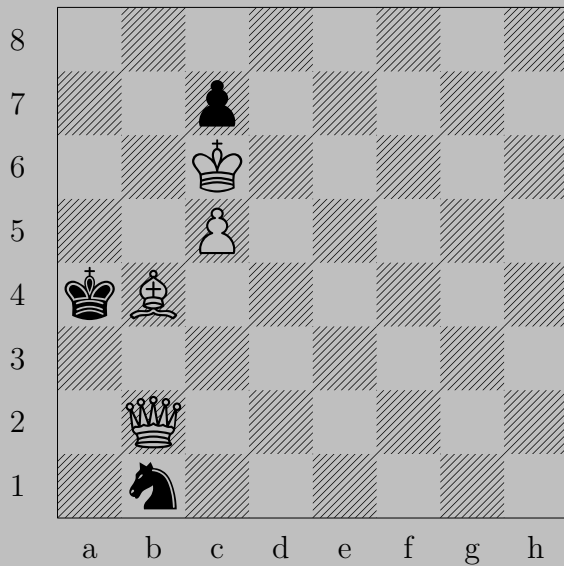
2780



♞d4+

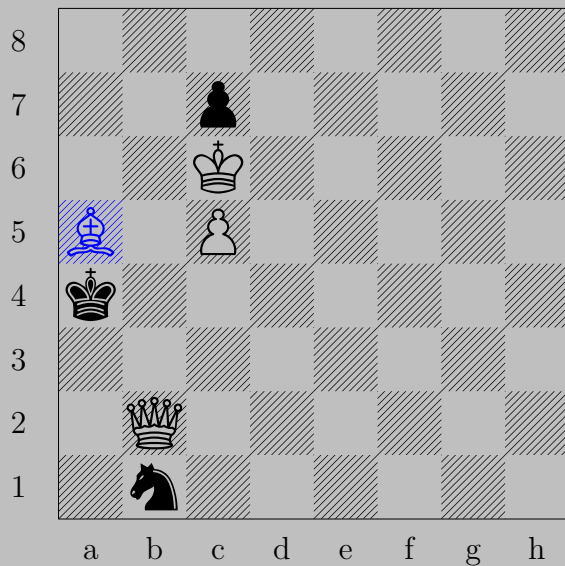
If ♞x d4 , ♚d2 . If ♞d6 , ♞f5 . If ♞f6 , ♚g7 . If ♞f4 , ♞e4 .

2781



T. Schönberger, 1925

2781

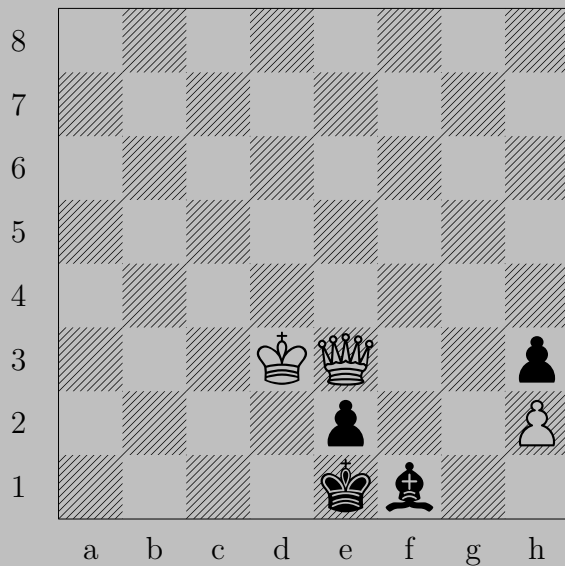


♘a5

If ♙×a5, ♚b5.

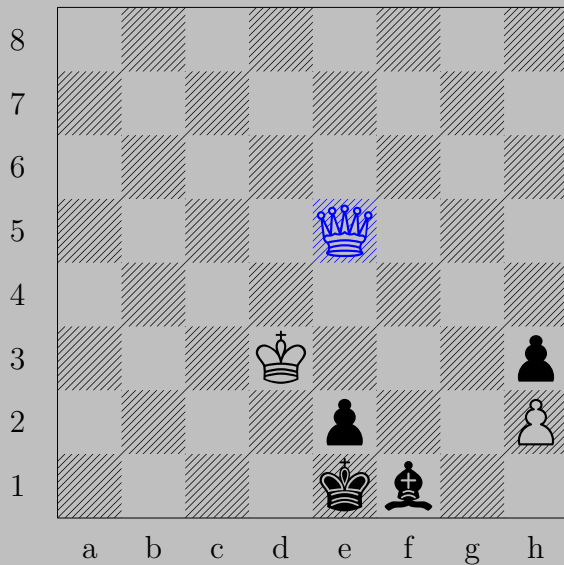
Otherwise, ♚b4.

2782



T. Schönberger, 1925

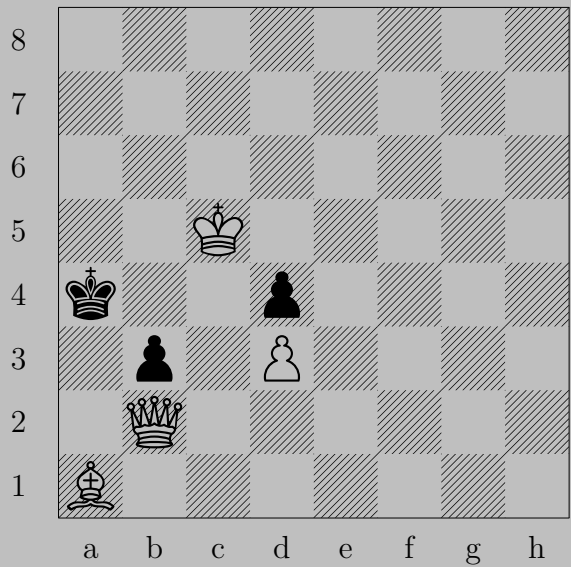
2782



♙e5

If ♔f2, ♚g3. If ♔d1, ♚a1. If ♘g2, ♙xe2.

2783



T. Schönberger, 1935

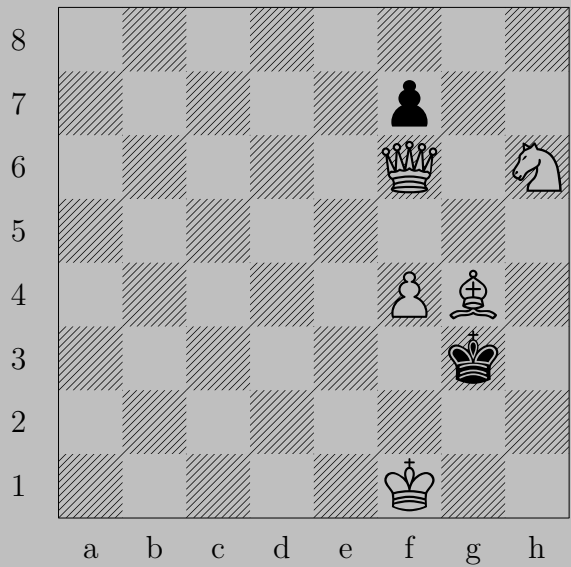
2783



♙d2

If ♔a3, ♙a5. If ♚b2, ♙b4.

2784



T. Schönberger, 1933

2784

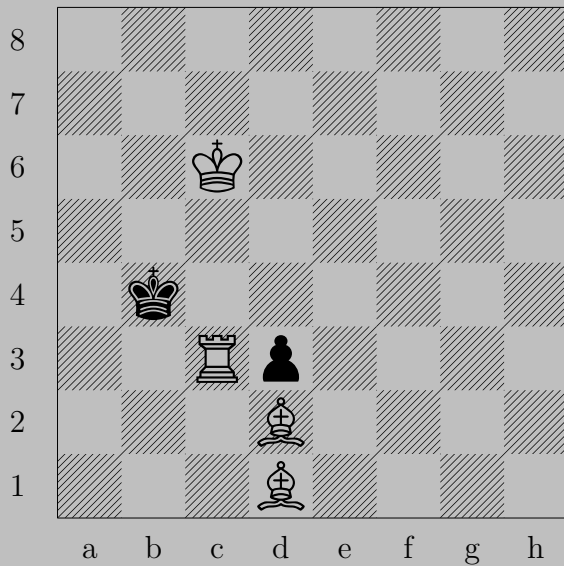


♙d4

If ♙h2, ♙g1.

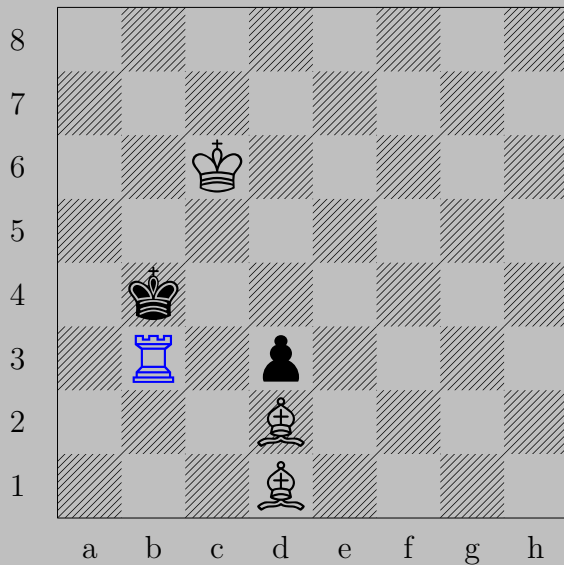
Otherwise, ♙f2.

2785



T. Schönberger, 1936

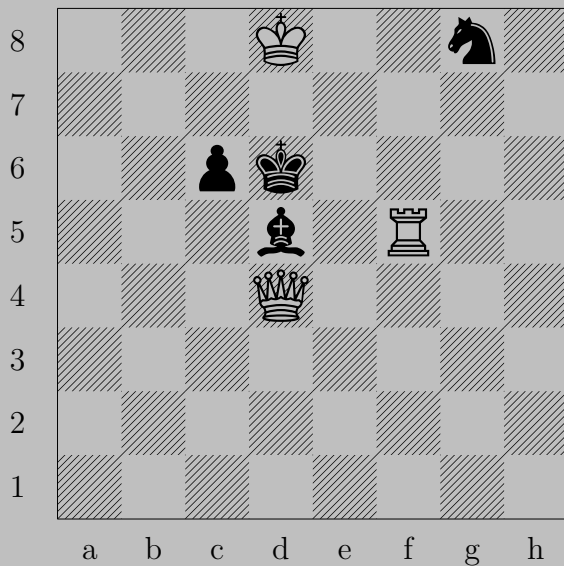
2785



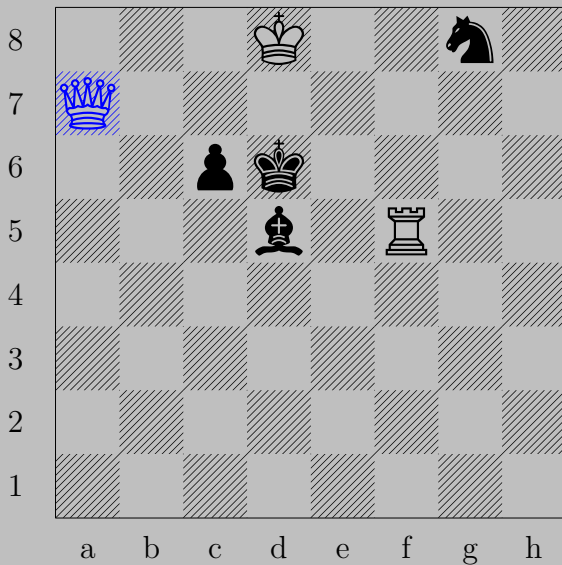
Rb3+

If Ka4 , Rxd4 . If Kc4 , Rb4 .

2786



T. Schönberger, 1933

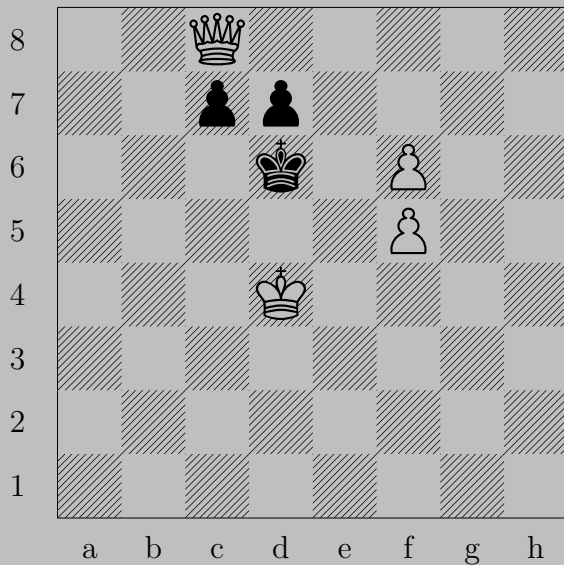


♙a7

If ♖c5, ♙a6. If ♘f6 or ♘h6, ♙e7. If ♘e7, ♙×e7.

Otherwise, ♙d7.

2787



T. Schönberger, 1925

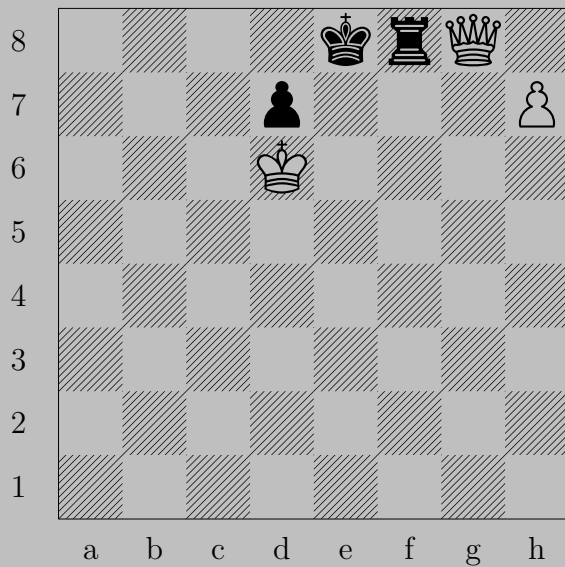
2787



♟f7

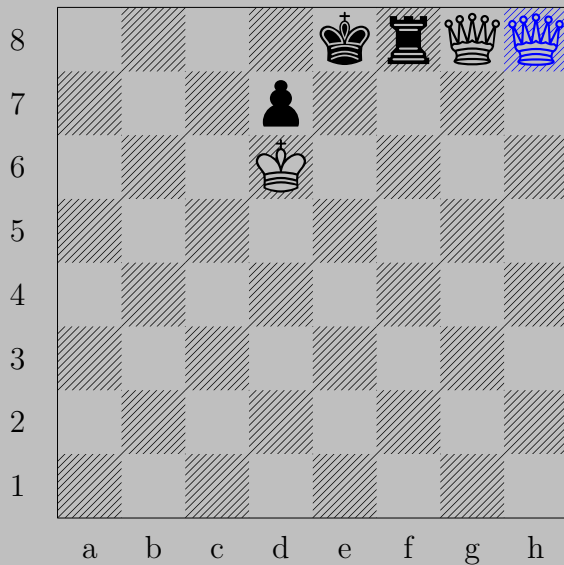
If ♟c5+ , ♚xc5 . If ♚c6 , ♚a6 . If ♟c6 or ♚e7 , ♟f8(♚) .

2788



T. Schönberger, 1925

2788



$\text{♔h8}(\text{♔})$

If ♖xg8 , ♔xg8 . If ♔d8 , ♔xf8 .

2789



T. Schönberger, 1925

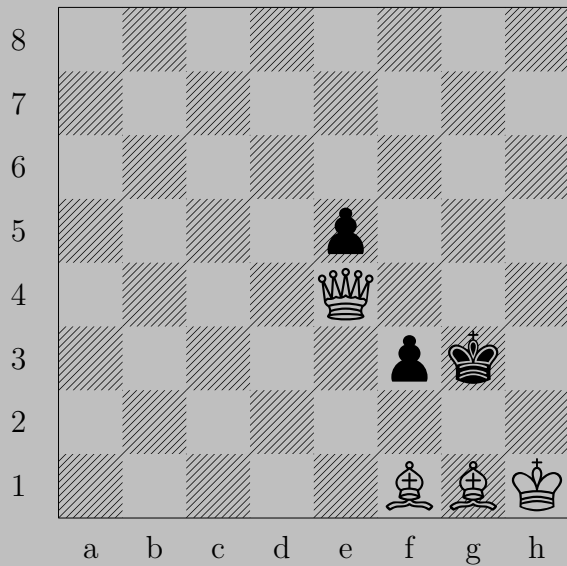
2789



♙e4

If ♜g4, ♚h7. If ♙h6, ♙g6.

2790



T. Schönberger, 1933

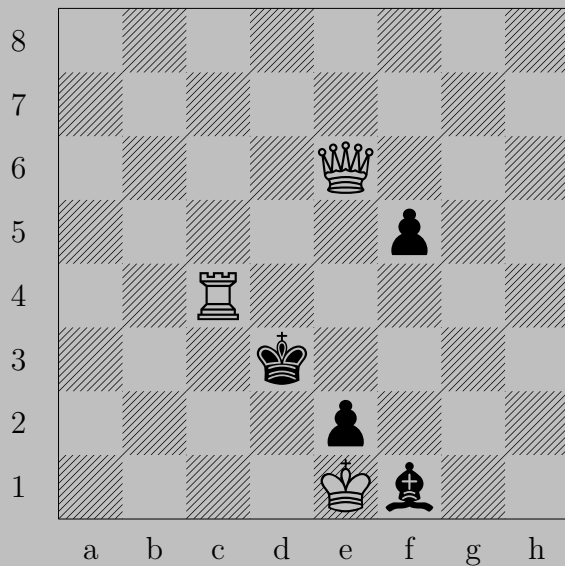
2790



♙f5

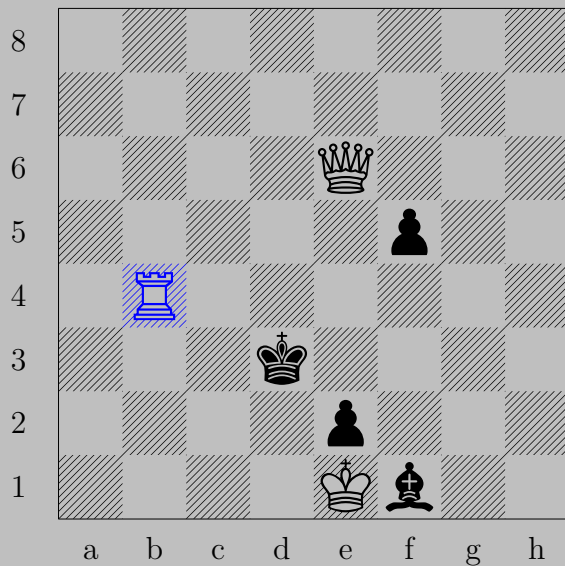
If ♖e4, ♙g5. If ♖f2, ♙xf2. If ♙h4, ♙f2.

2791



T. Schönberger - R. Pickler, 1926

2791

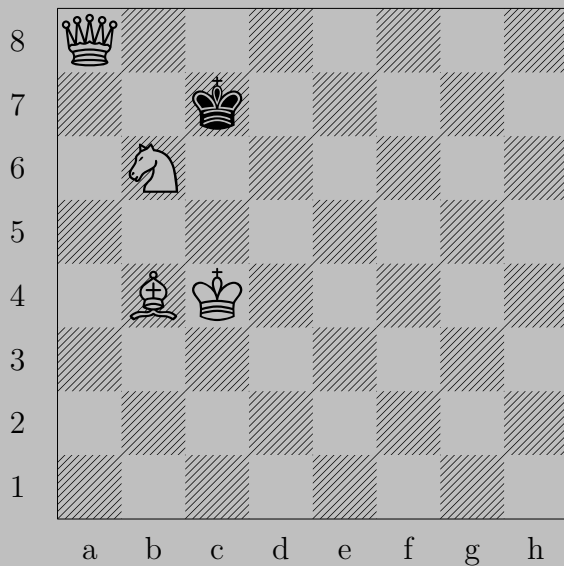


♖b4

If ♙c2 , ♕c4 .

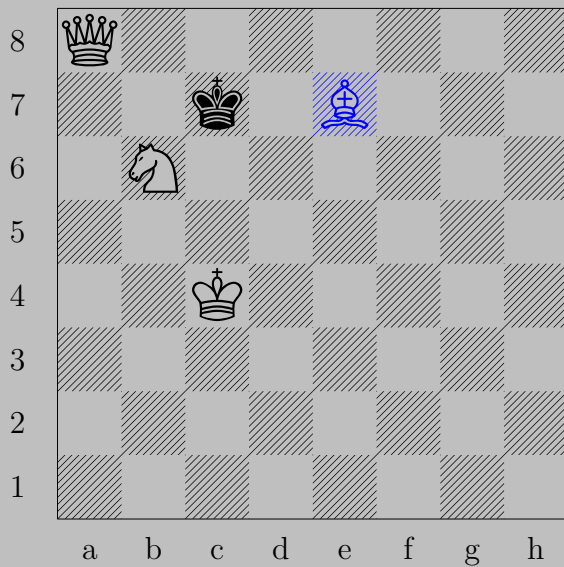
Otherwise, ♕b3 .

2792



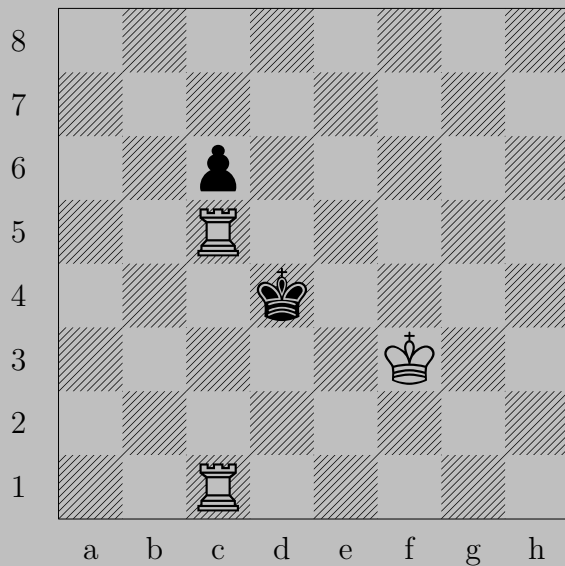
T. Schönberger - Gy. Schiffert, 1926

2792



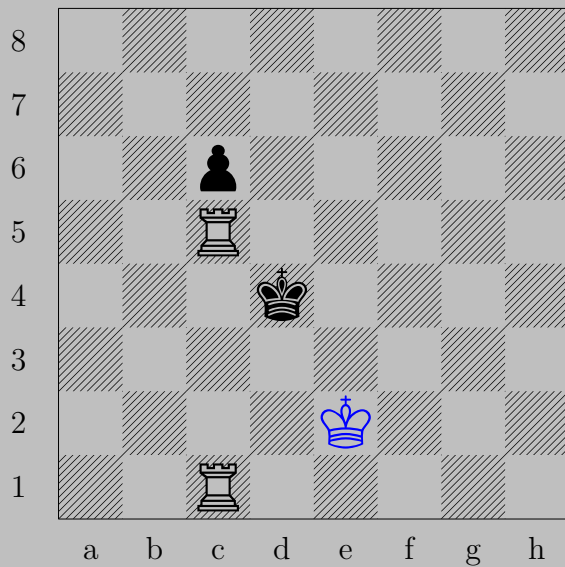
♖e7, ♔xb6
♖d8

2793



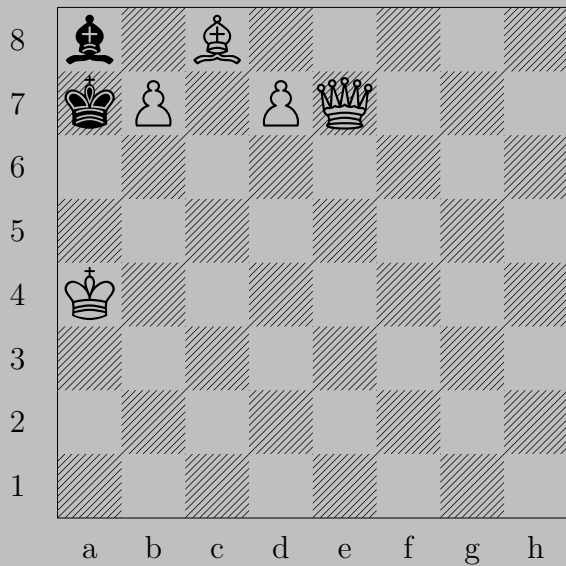
T. Schönberger - E. Szentgyörgyi, 1926

2793



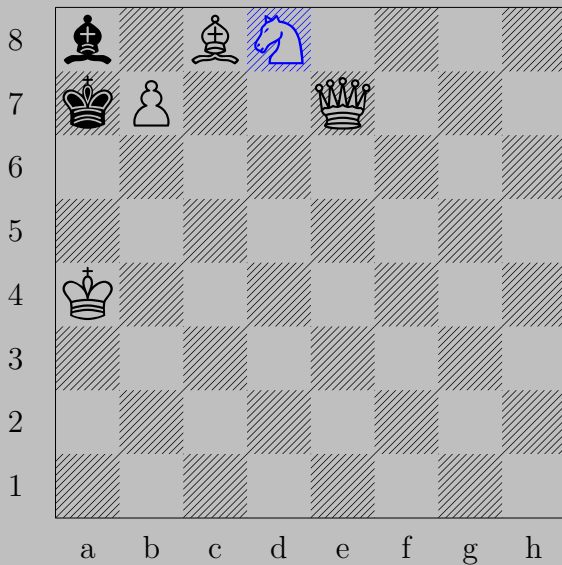
♔e2, ♔e4
♖(c1)c4

2794



E. Schulz, 1936

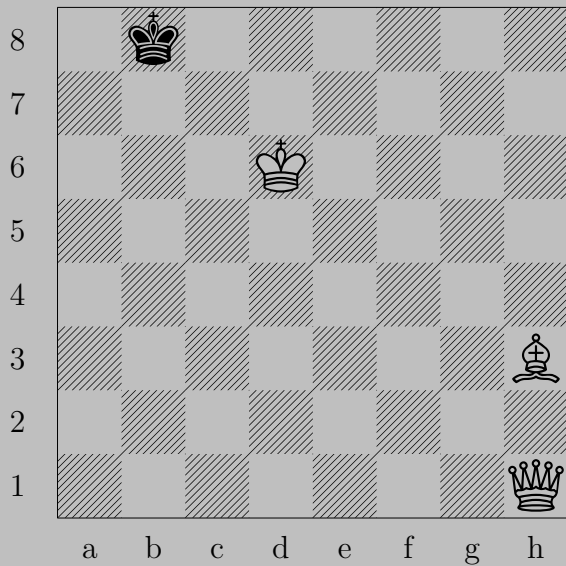
2794



$\text{♞d8}(\text{♞})$

If ♞b8 , ♞c6 . If ♞a6 or ♞b6 , $\text{♞x8}(\text{♞})$. If ♞x7 , ♞x7 .

2795



J. Schumer, 1906

2795



♝c8

If ♔xc8, ♚a8. If ♔a7, ♚b7.

2796



M. Segers, 1936

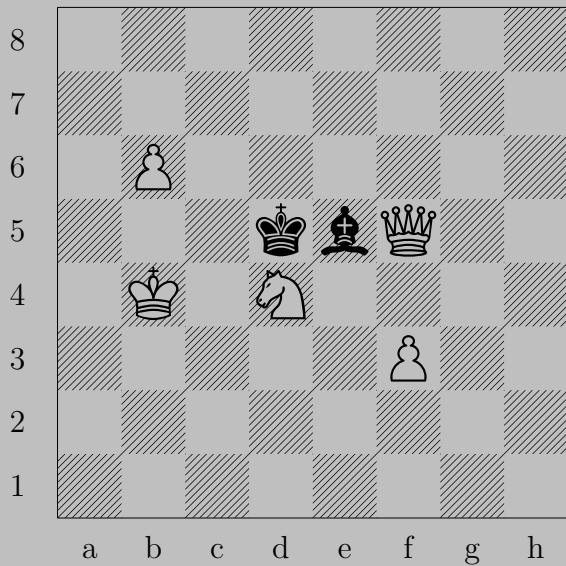


Rg8

If Kh6 , Rh8 .

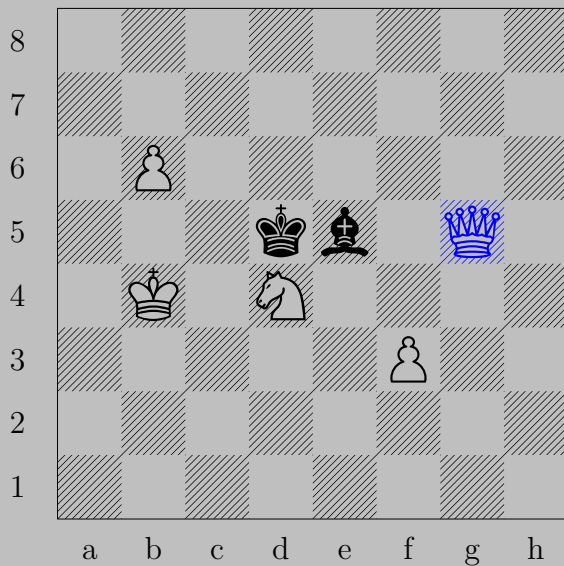
If Nh4 , Rxh4 . Otherwise, Rh4 .

2797



M. Segers, 1935

2797



♔g5

If ♙×d4, ♕d2. If ♙d6, ♕d8.

2798



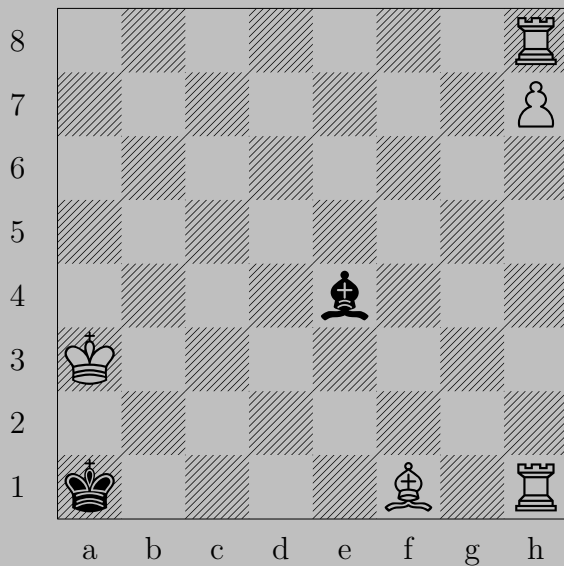
J. J. P. Sellberger - J. J. Ebben, 1948/49

2798



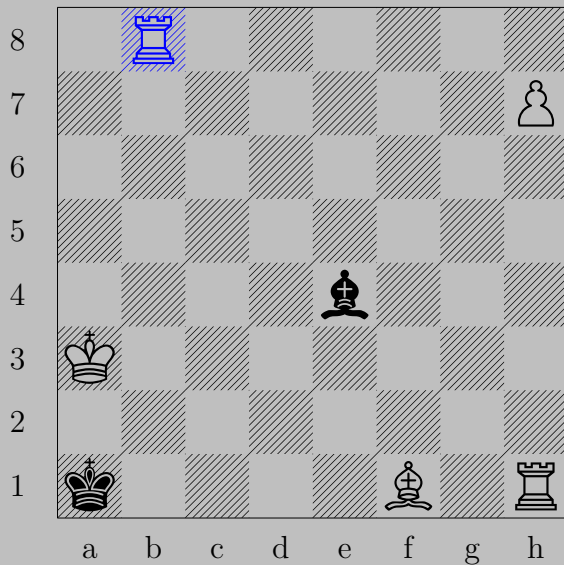
♖d6, ♔d8 or ♙d1
♖f8

2799



C. Seneca, 1936

2799



Rb8

If Kxh7 , Kd3 . If Kb7 , Kg2 .

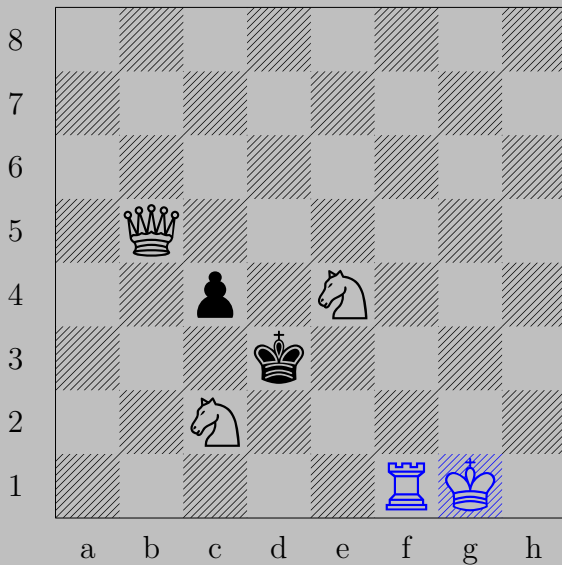
Otherwise, Kh8 (K).

2800



V. Sevastyanov, 1971

2800



O-O

If ♔xc2, ♚b1. If ♔xe4, ♚f5. If ♔e2, ♚xc4.