

# Chess Puzzles

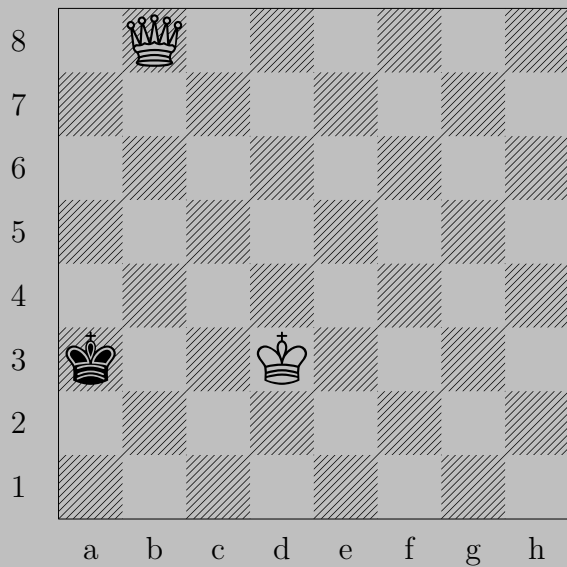
307-400

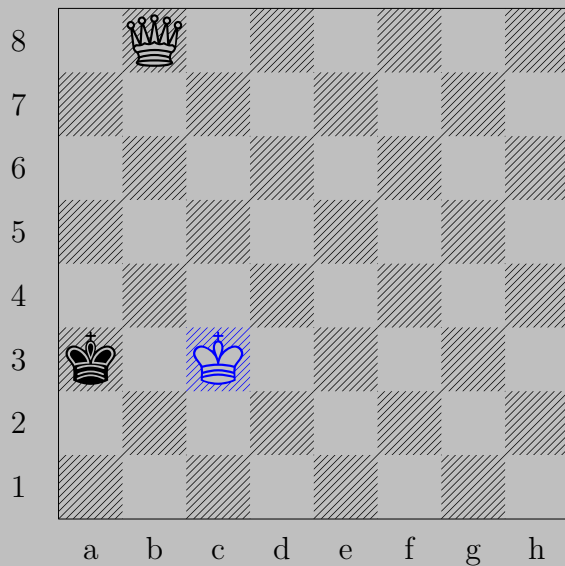
Mate in Two  
White to Move

László Polgár

## Links

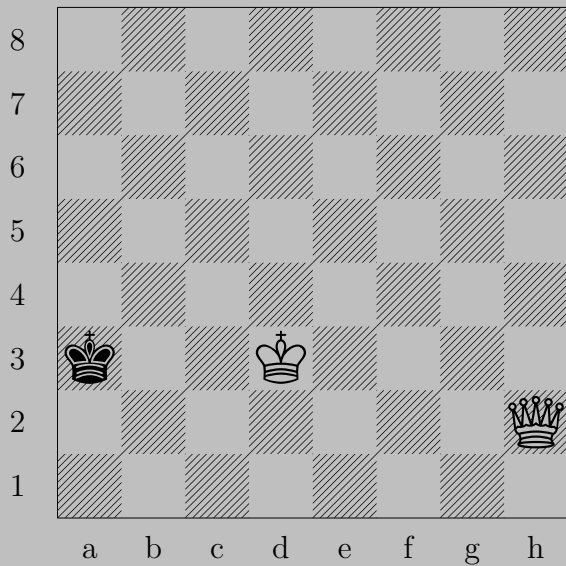
							307	308	309	310
311	312	313	314	315	316	317	318	319	320	
321	322	323	324	325	326	327	328	329	330	
331	332	333	334	335	336	337	338	339	340	
341	342	343	344	345	346	347	348	349	350	
351	352	353	354	355	356	357	358	359	360	
361	362	363	364	365	366	367	368	369	370	
371	372	373	374	375	376	377	378	379	380	
381	382	383	384	385	386	387	388	389	390	
391	392	393	394	395	396	397	398	399	400	

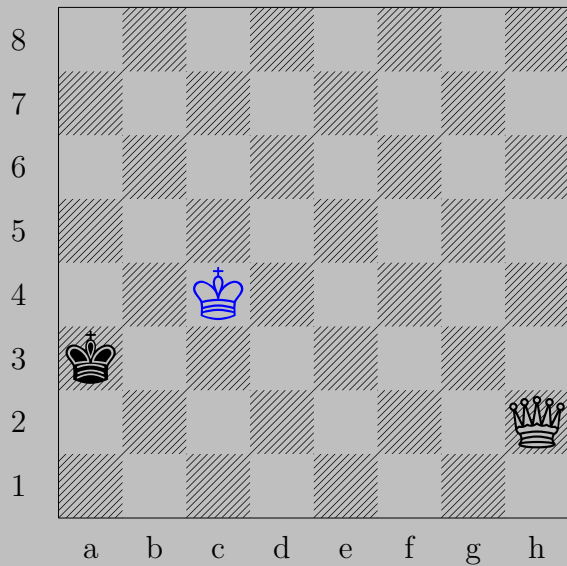




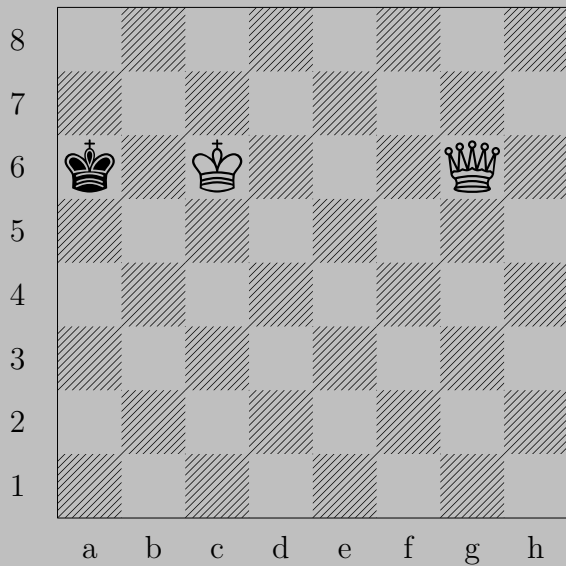
♔c3

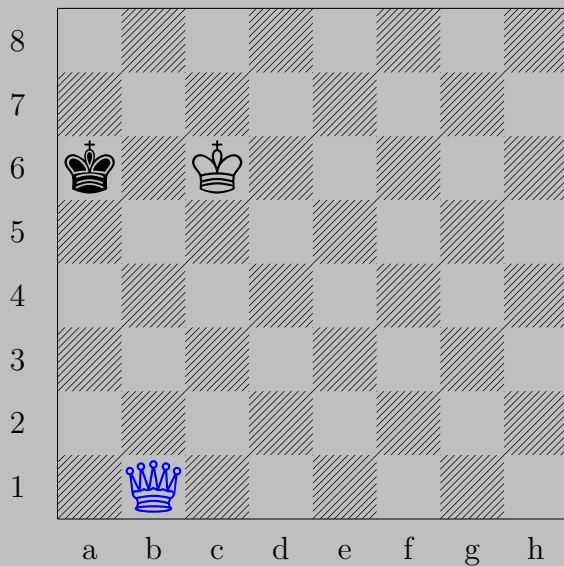
If ♔a2, ♕b2. If ♔a4, ♕b4.





♔c4, ♔a4  
♚a2

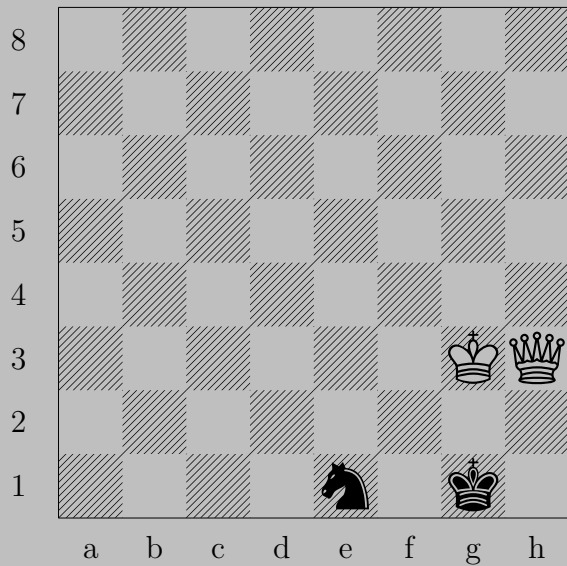




♔b1

If ♔a7, ♔b7. If ♔a5, ♔b5.

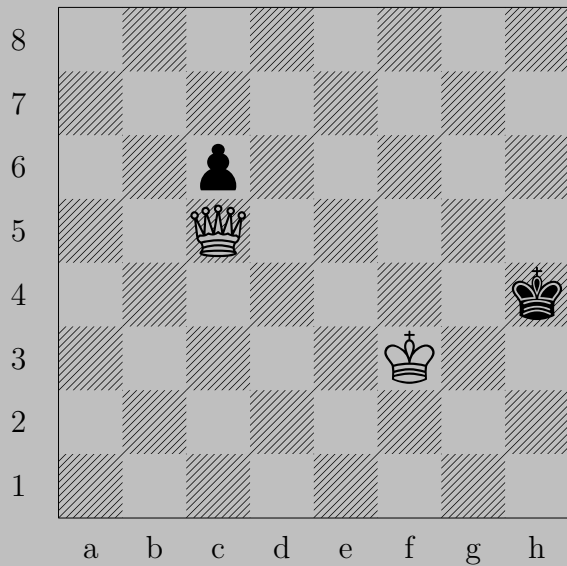


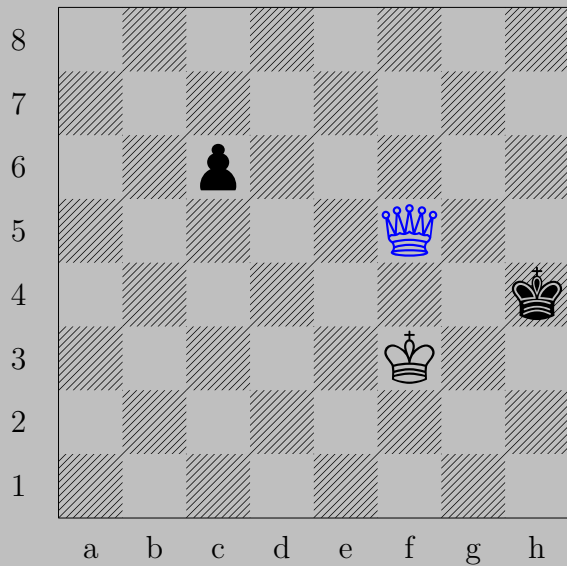




♔h2+, ♔f1

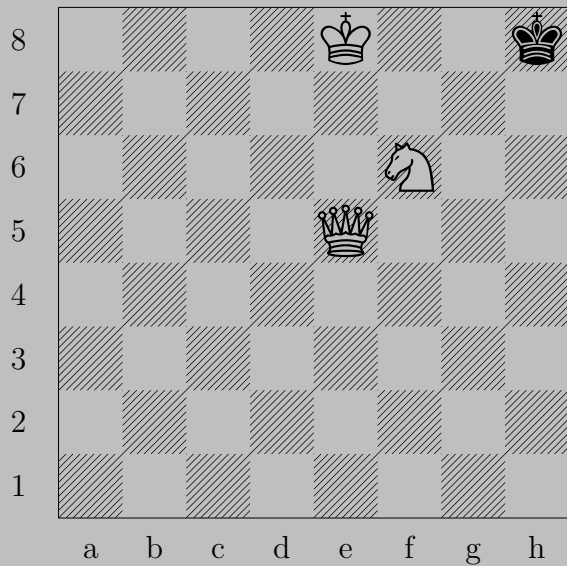
♕f2

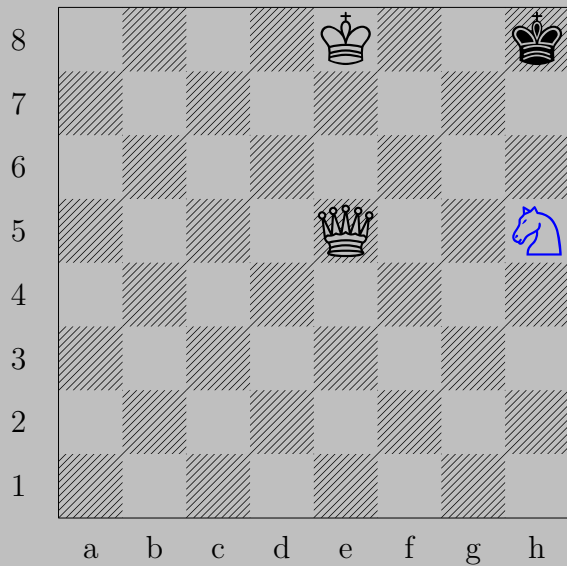




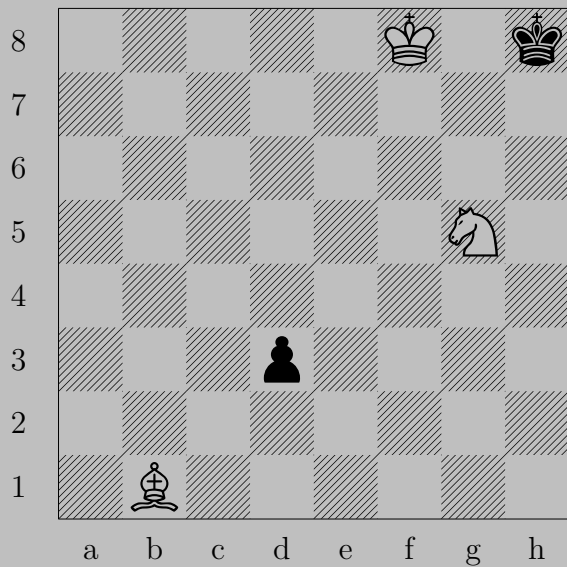
♙f5, ♖c5

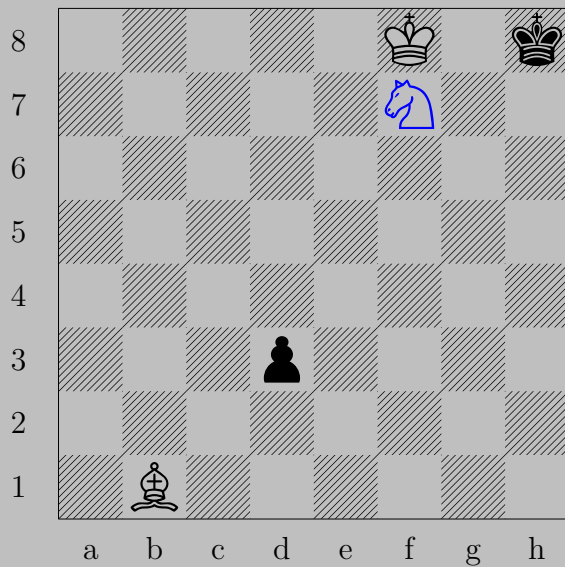
♙g4





♞h5+, ♕g8 or ♔h7  
♕g7

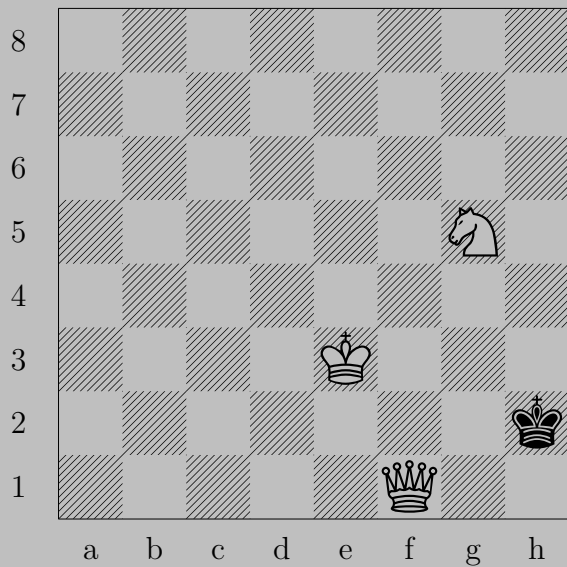


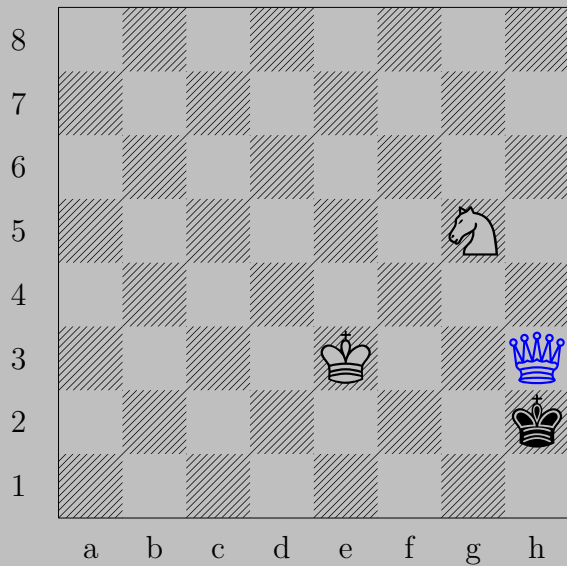


♞f7+, ♔h7

♚x d3

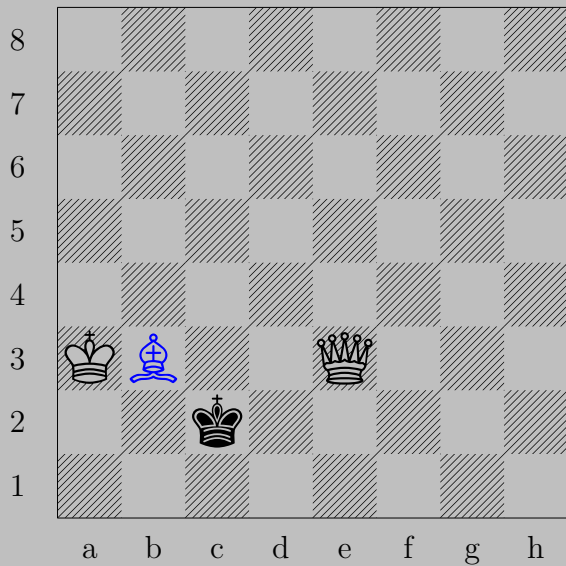






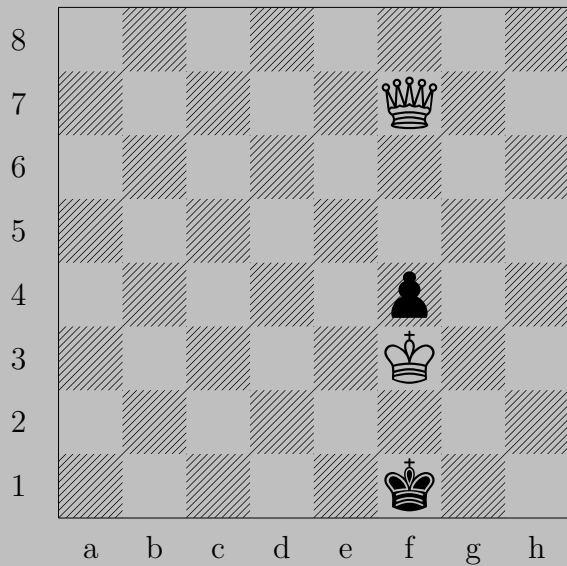
♔h3, ♕g1  
♞f3

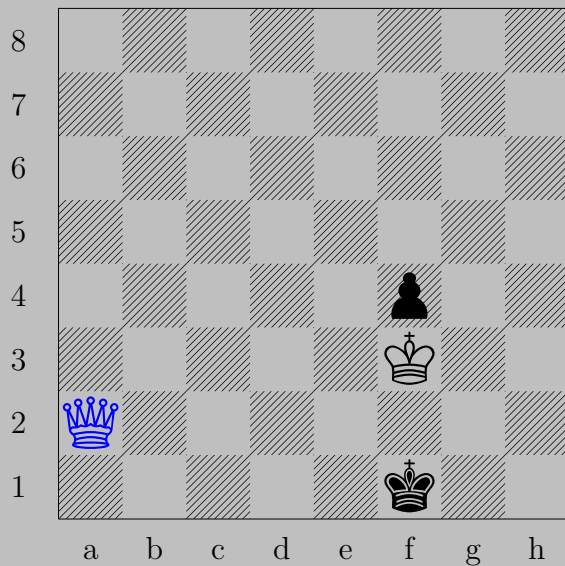




♔b3+, ♚b1

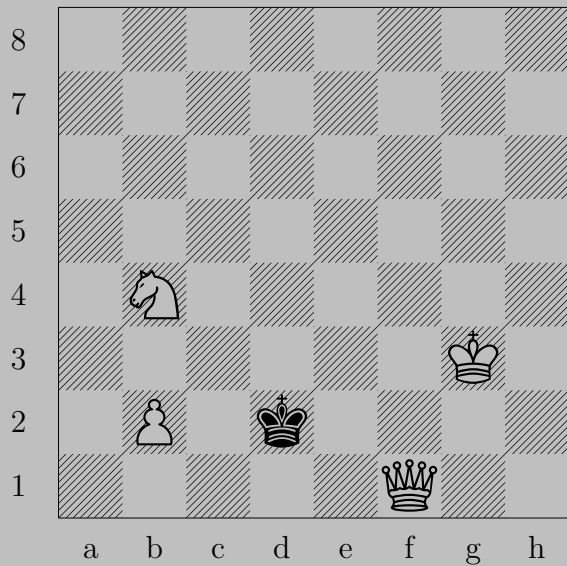
♑e1 or ♑g1





♙a2

If ♔e1, ♙e2. If ♔g1, ♙g2.





♔d3+

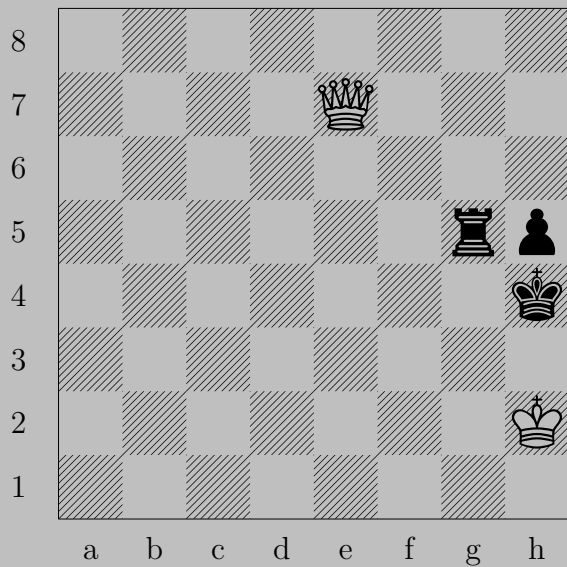
If ♔c1, ♕c2. If ♔e1, ♞c2.

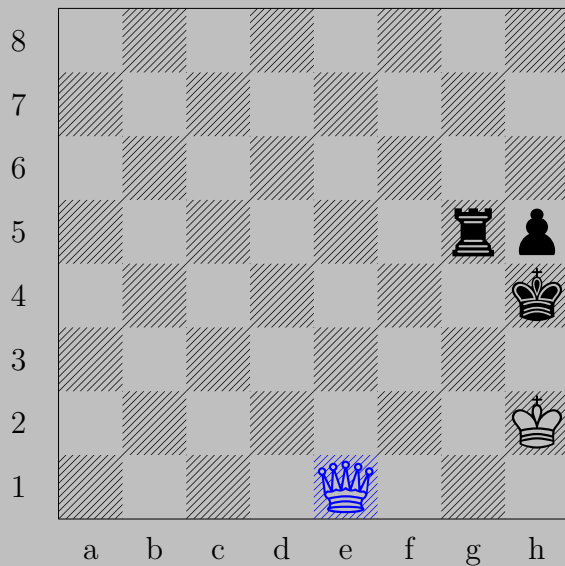






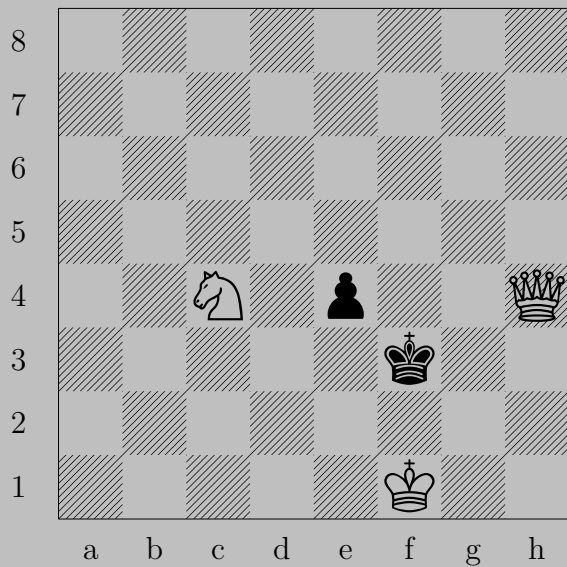
♔g4, ♖f5 or ♔b1  
♖d1

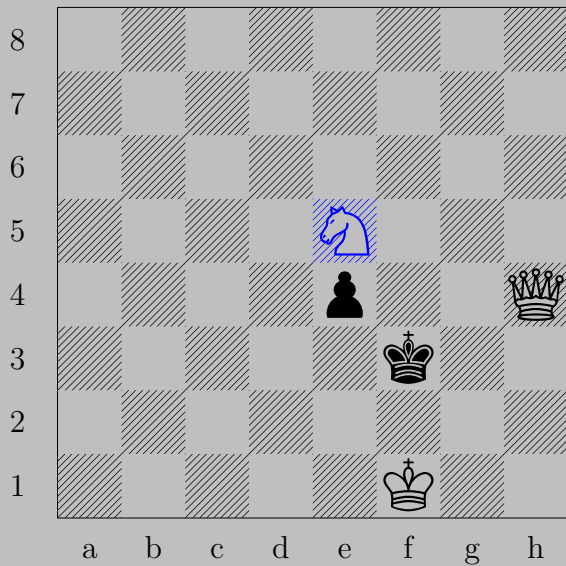






♔e1+

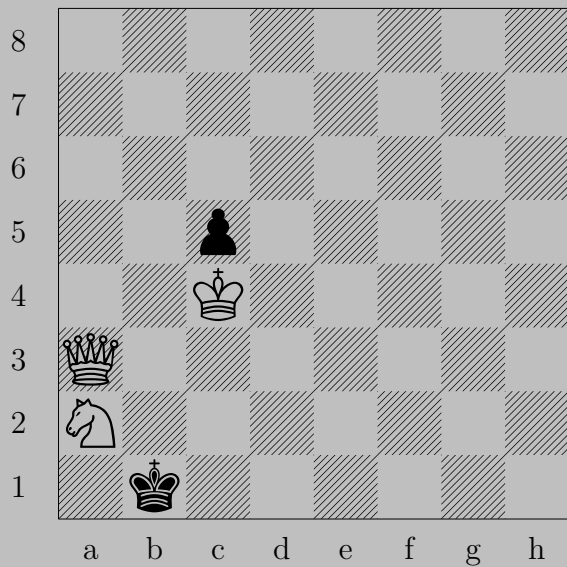
If ♖g3, ♕×g3. If ♔g4, ♕e4.

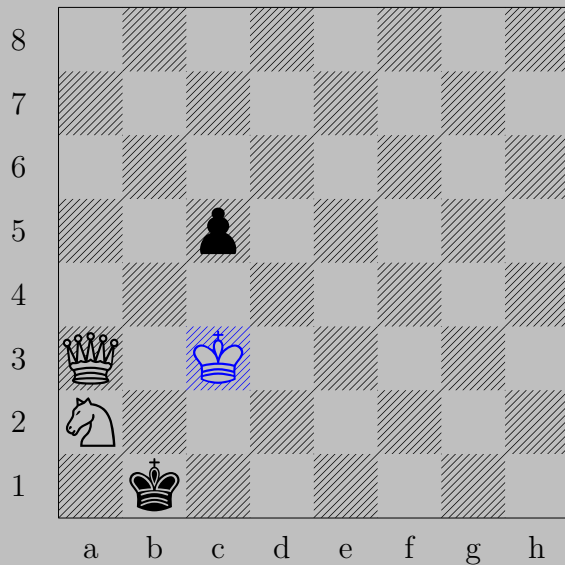




e5+, e3

f2

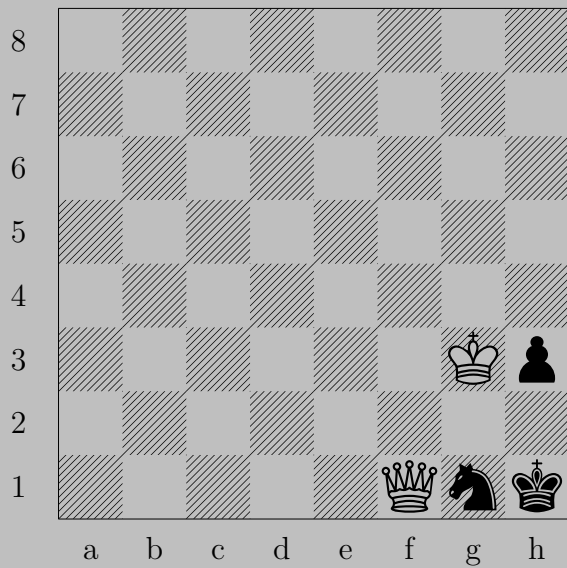


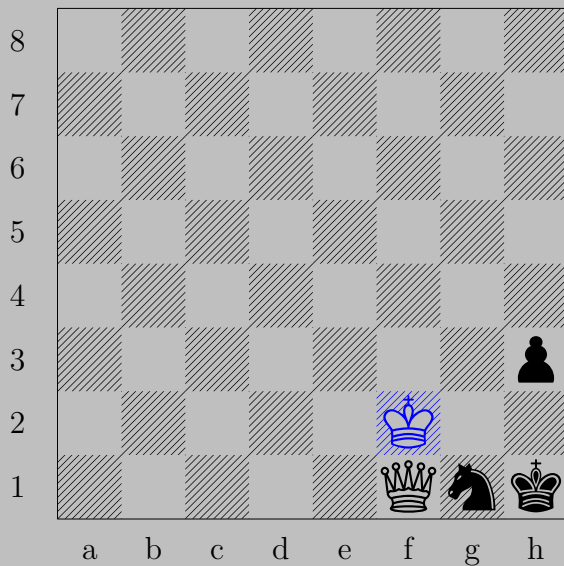


♔c3, ♖c4 or ♔a1

♕b2

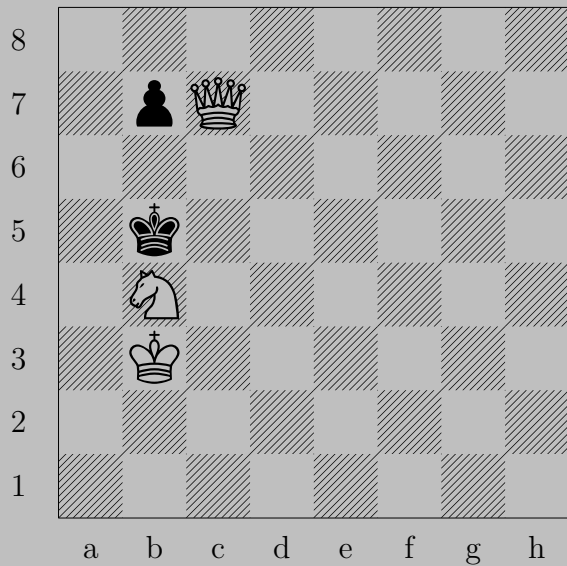




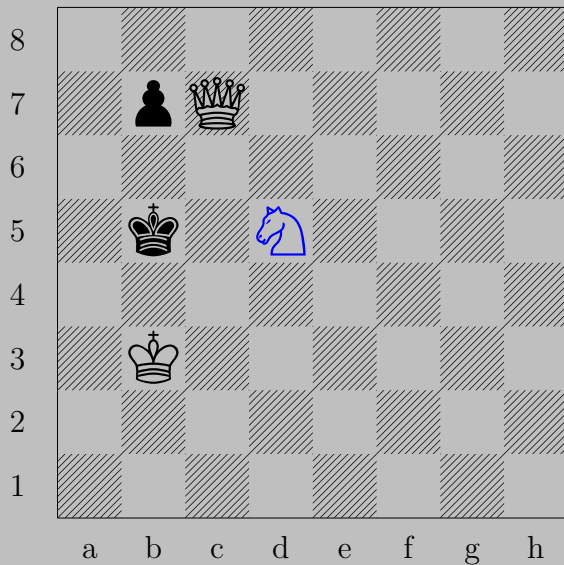


♔f2

If ♔h2, ♚×g1. If ♖h2, ♚g2.



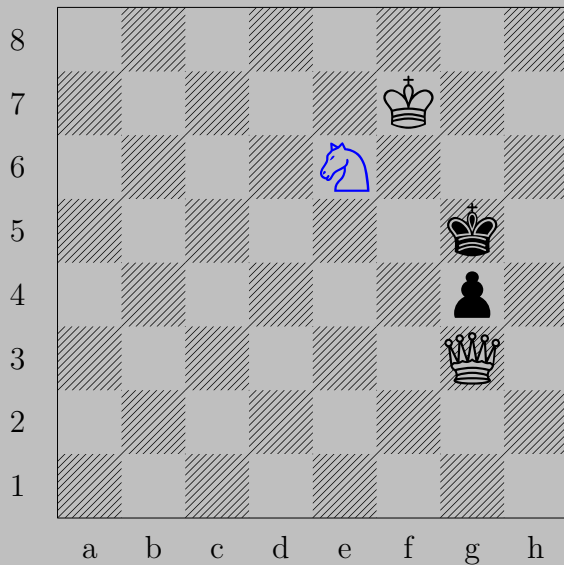
See puzzle [339](#)



$\text{♞d5}$

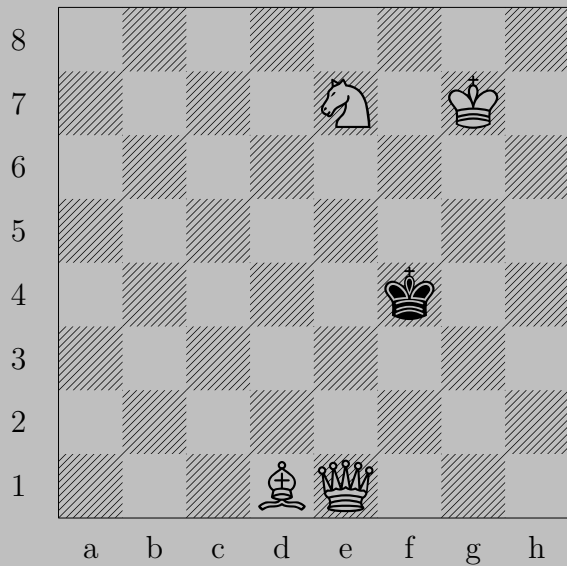
If  $\text{♜b6}$ ,  $\text{♞x b6}$ . If  $\text{♞a6}$ ,  $\text{♞b6}$ .





$\text{N}e6+$

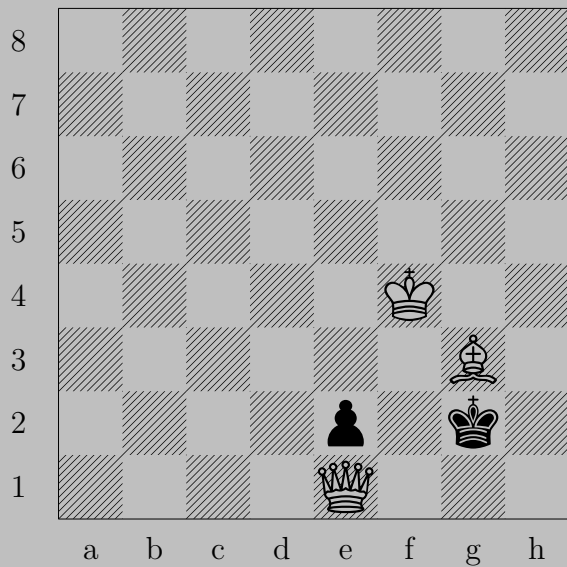
If  $\text{K}f5$ ,  $\text{Q}f4$ . If  $\text{K}h5$  or  $\text{K}h6$ ,  $\text{Q}h2$ .

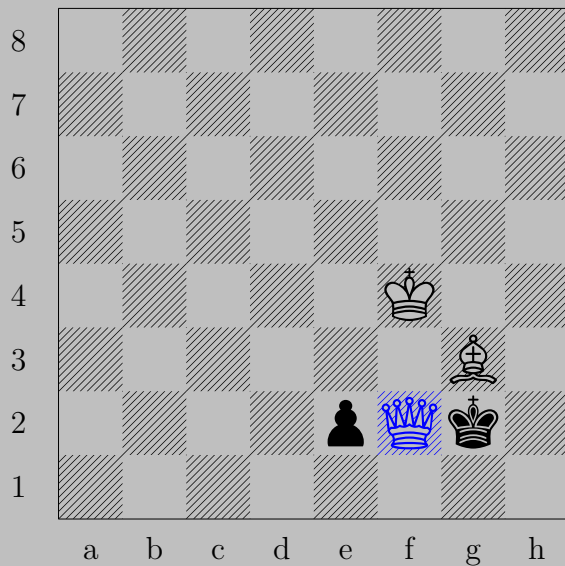




$\text{♞g6+}$ ,  $\text{♔f5}$  or  $\text{♔g5}$   
 $\text{♔e5}$







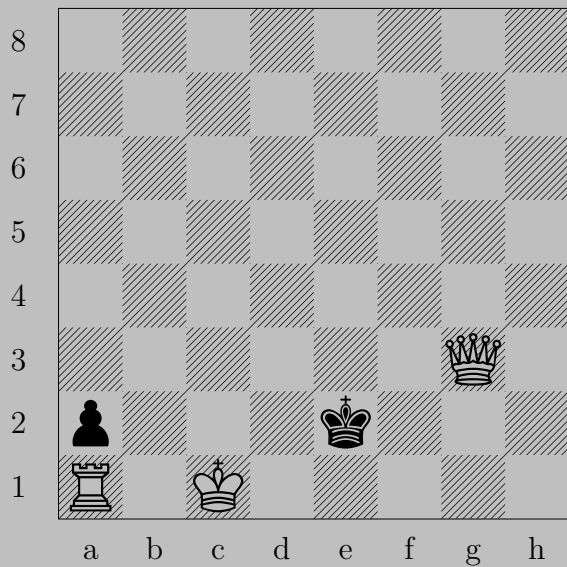
♔f2+, ♔h1 or ♔h3

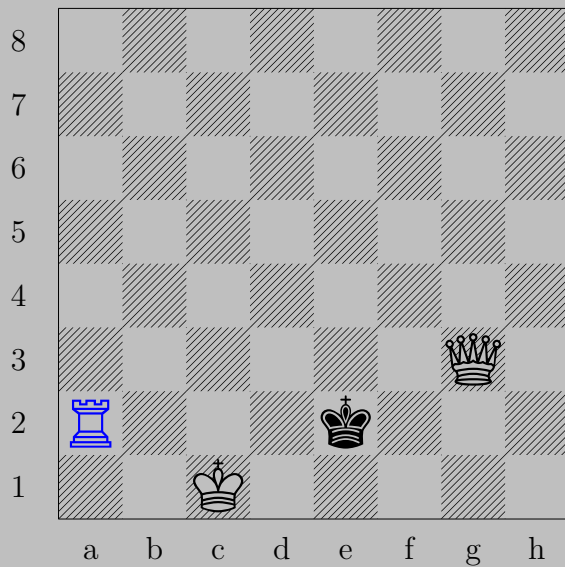
♔h2





♔g2, ♔f4 or ♔d3  
♖xf3





♖×a2+, ♔f1

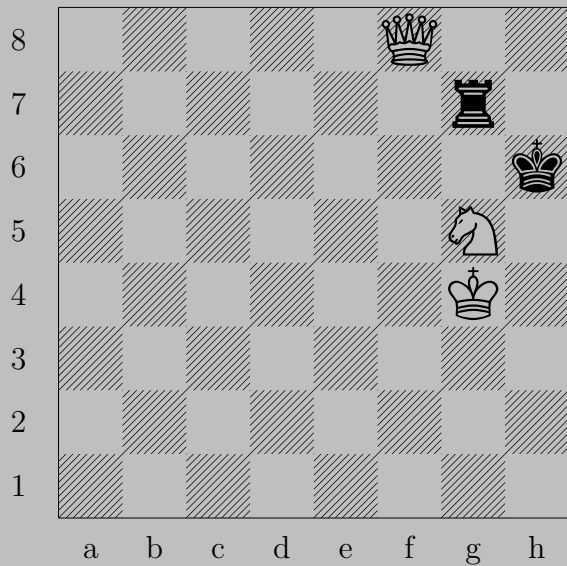
♚f2

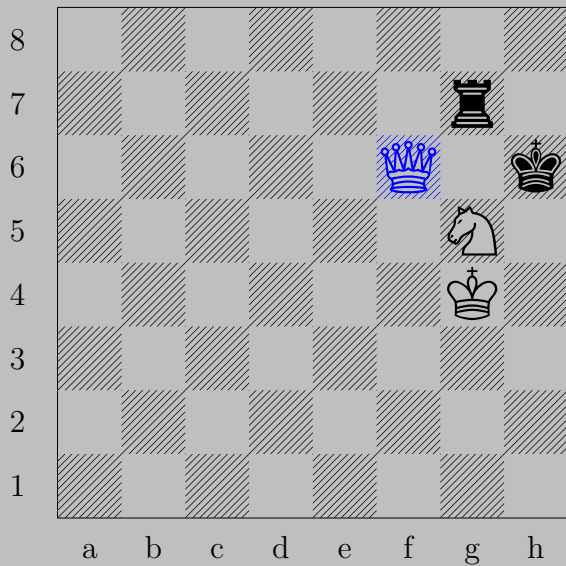




♙f7+, ♚c8  
♙c7

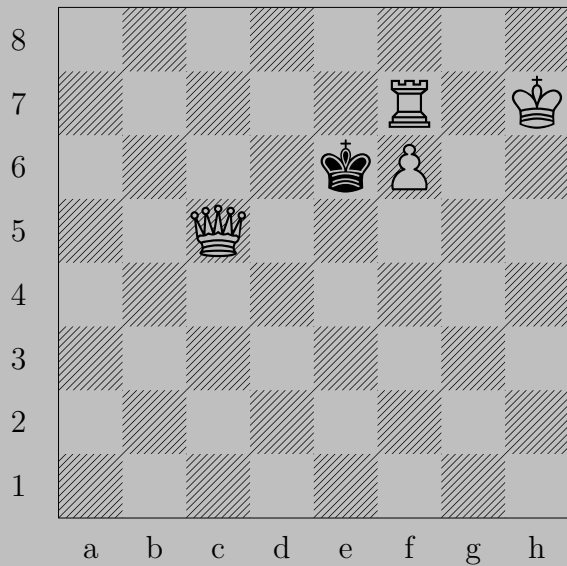


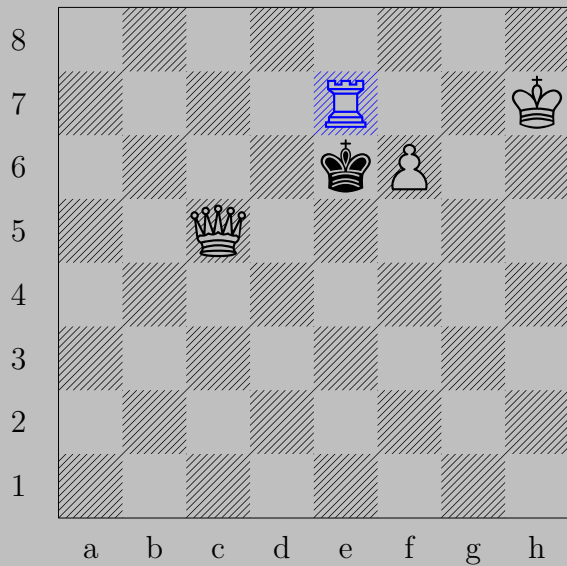




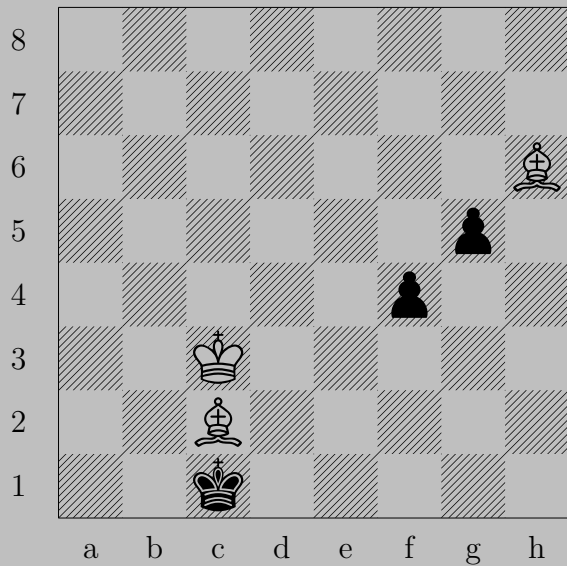
♔f6+, ♖g6

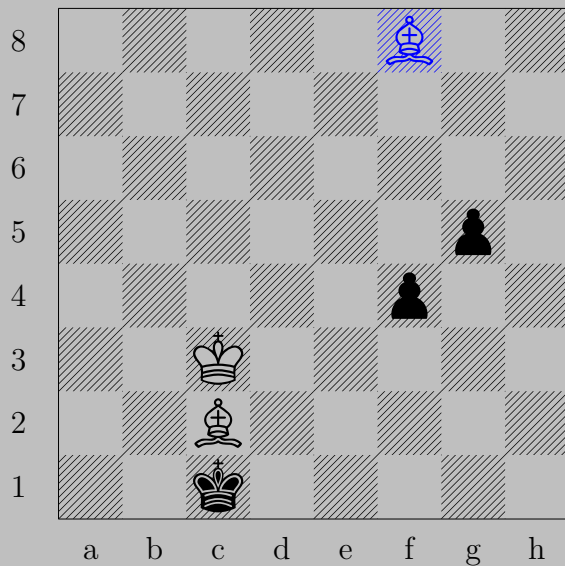
♔h8





$\text{♖e7+}, \text{♚xf6}$   
 $\text{♙e5}$

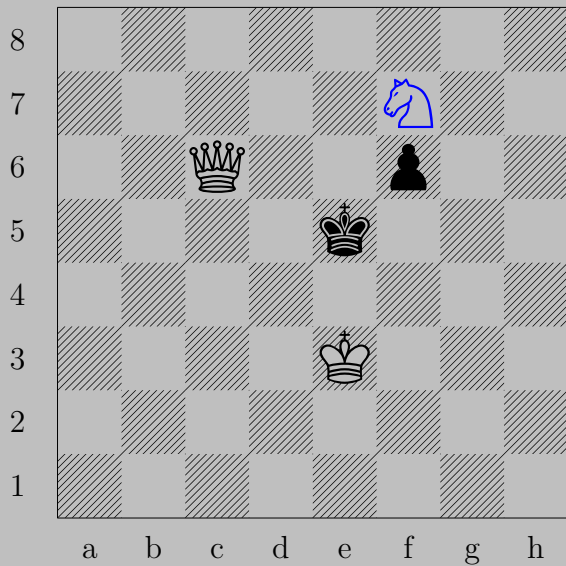




♙f8, ♖f3 or ♖g4

♙a3

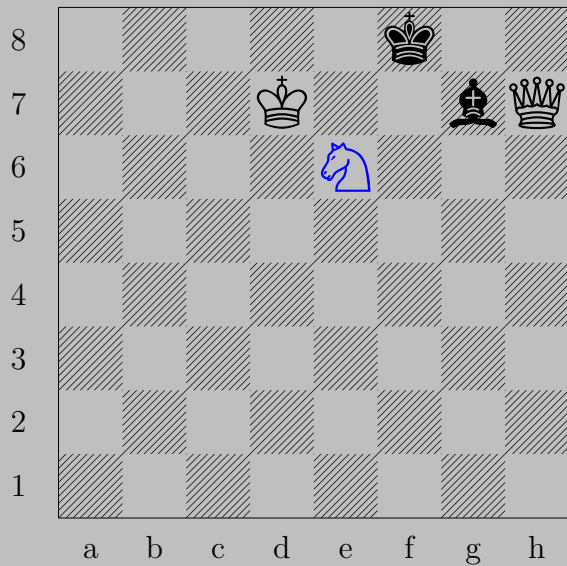




♞f7+, ♔f5  
♚e4

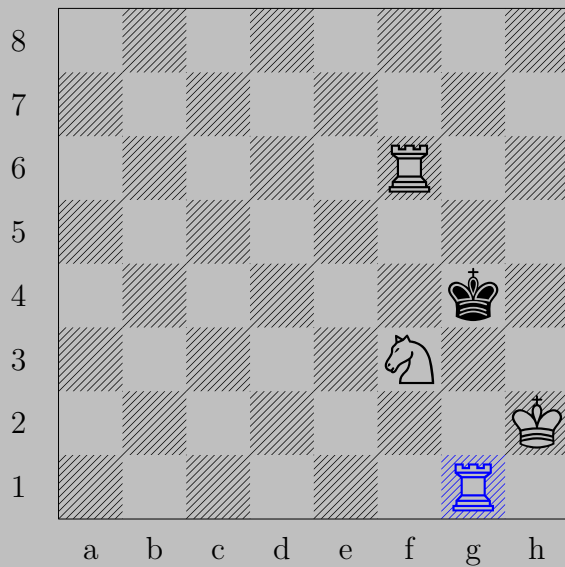




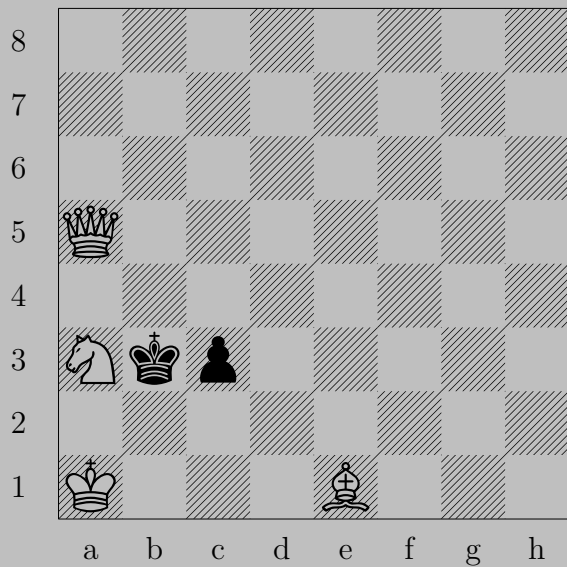


$\text{N}e6+, \text{K}f7$   
 $\text{Q}xg7$





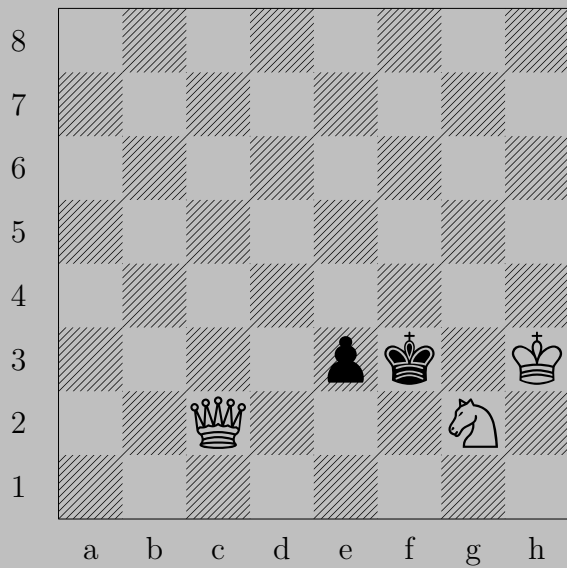
♖g1+, ♔h5  
♖g5

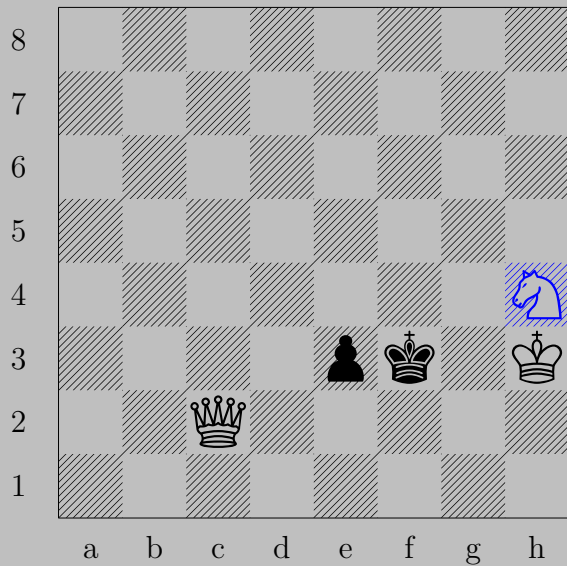




♔xc3+, ♕a4

♕b4





♞h4+, ♔f4

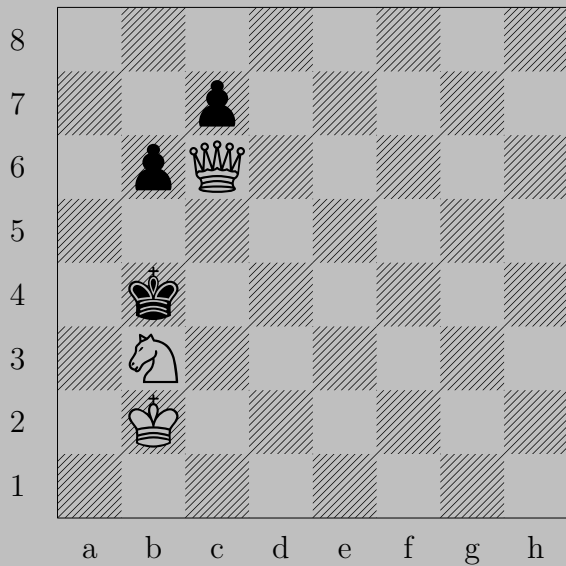
♚f5



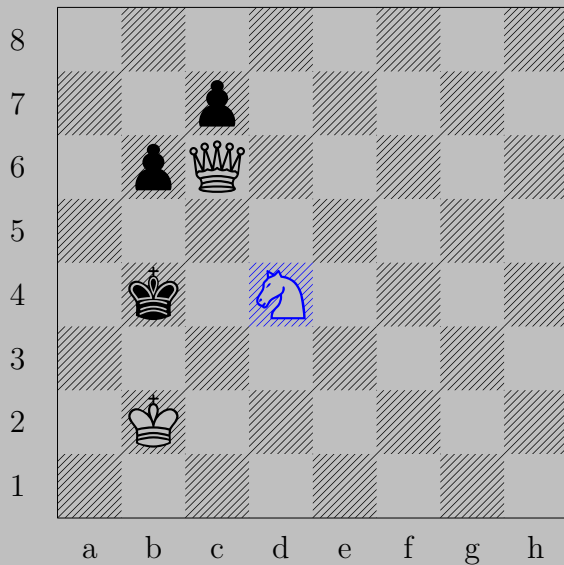




♔e6+, ♔d8  
♞c6



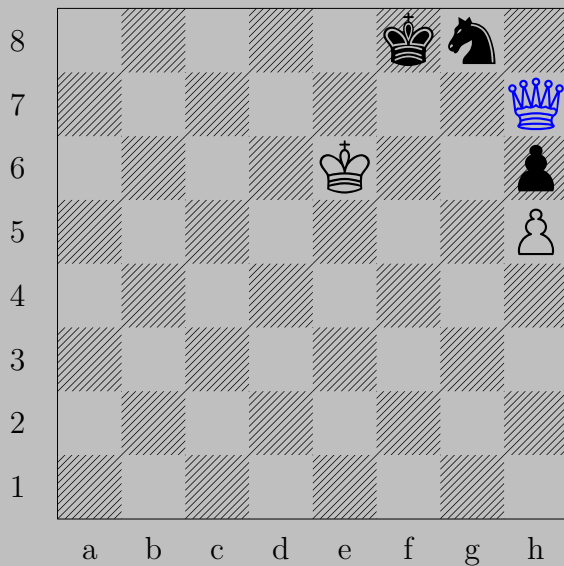
See puzzle [323](#)



$\text{N}d4$

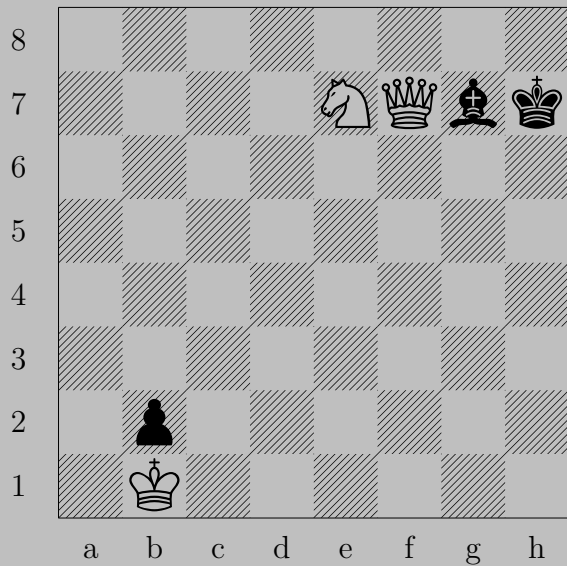
If  $\text{K}a5$ ,  $\text{Q}b5$ . If  $\text{K}b5$ ,  $\text{Q}xb5$ .



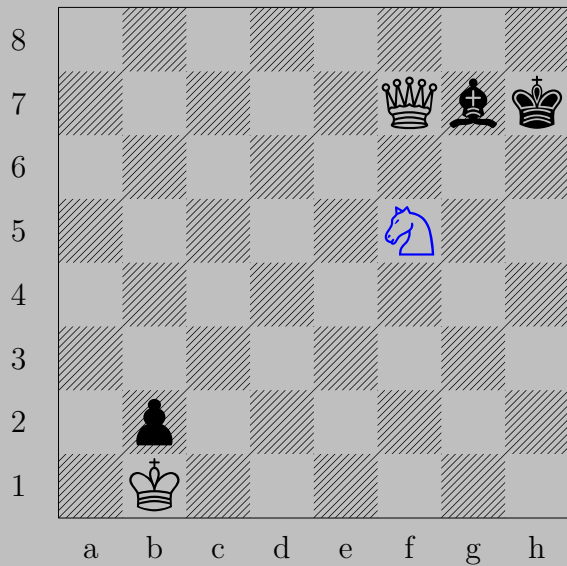


♔h7

If ♘f6 or ♘e7, ♔f7. If ♔e8, ♔xg8.



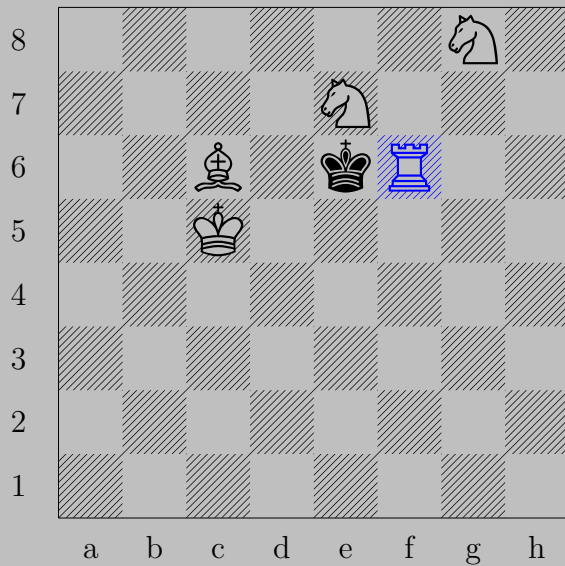
341



$\text{♞f5, ♔h8}$   
 $\text{♕xg7}$

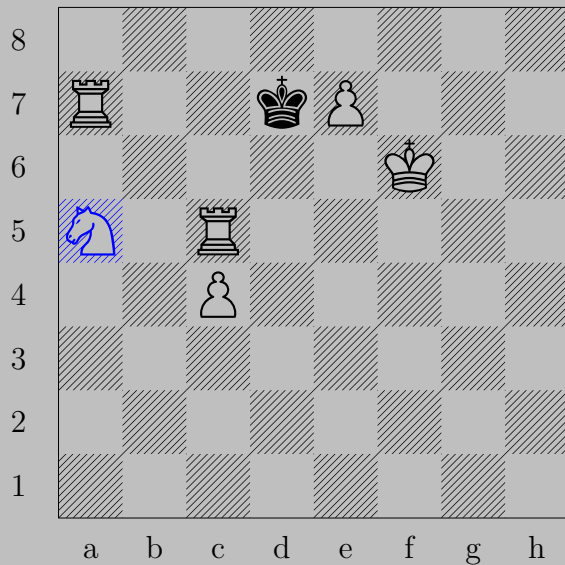






♖f6+, ♔e5  
♞g6





♞a5+

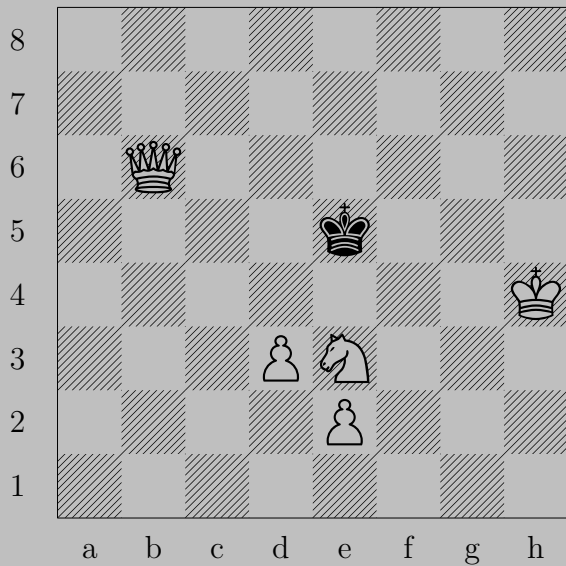
If ♔e8, ♖c8. If ♔d6, ♖d5.





♖a1+

If ♘b1, ♖xb1. If ♘d1, ♖xd1.



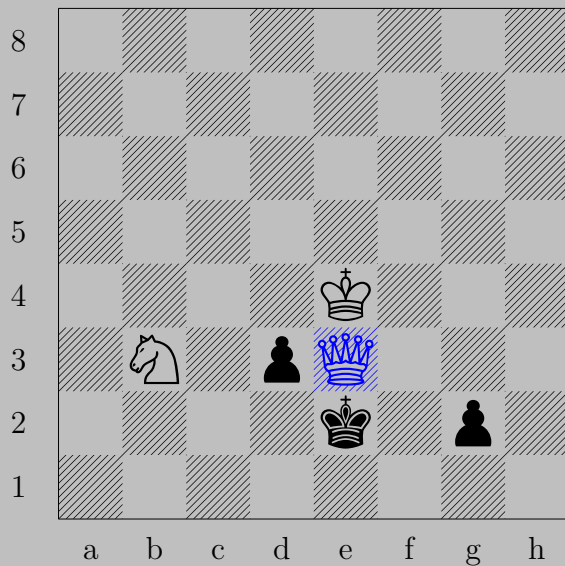


♞g4+

If ♔f5 or ♔f4, ♚f6. If ♔d5, ♙e4.







♔e3+

If ♔d1, ♕d2. If ♔f1, ♞d2.





♔g3+

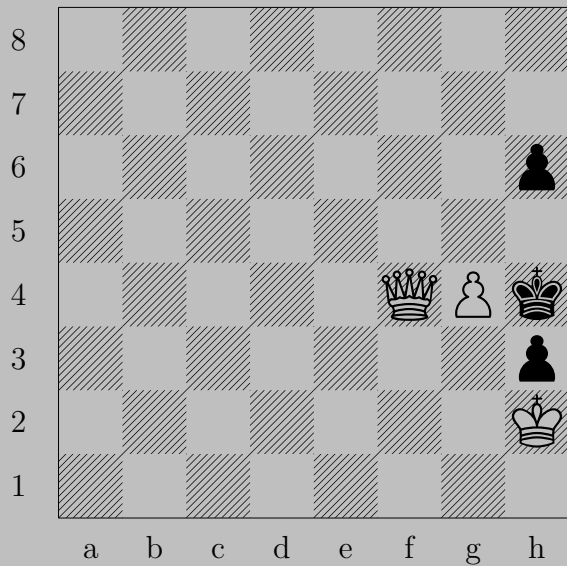
If ♔f1, ♕f2. If ♔h1, ♖f2.





♔f3+

If ♙xd2, ♖d1. If ♘e3, ♔xe3.



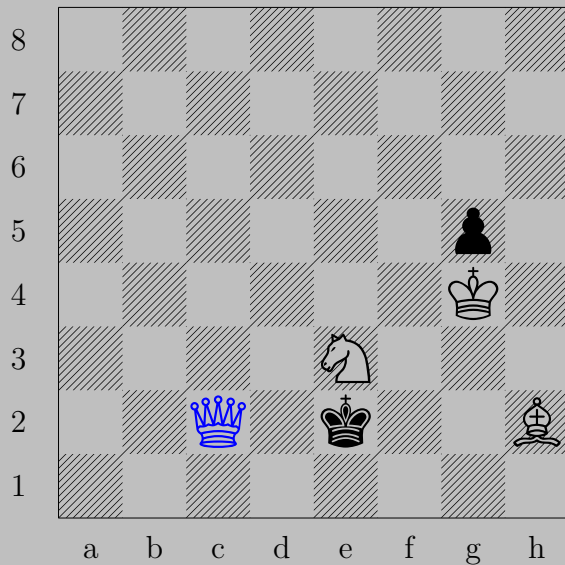


♙f5, ♖h5

♙xh5



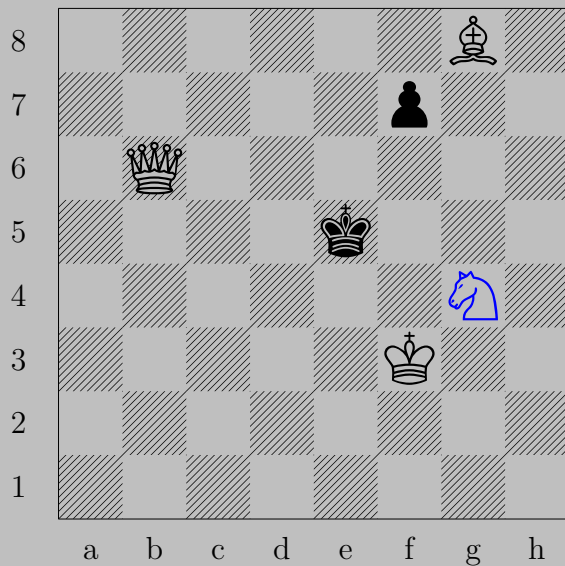




♙c2+

If ♖×e3, ♘g1. If ♖e1, ♘g3.

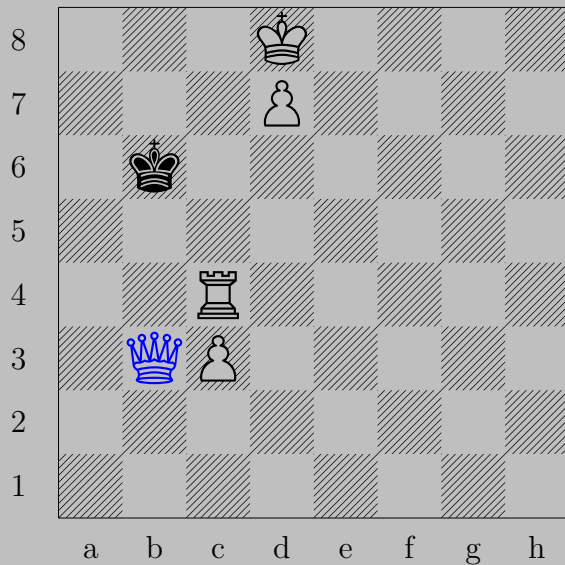




$\text{Ng4+}$

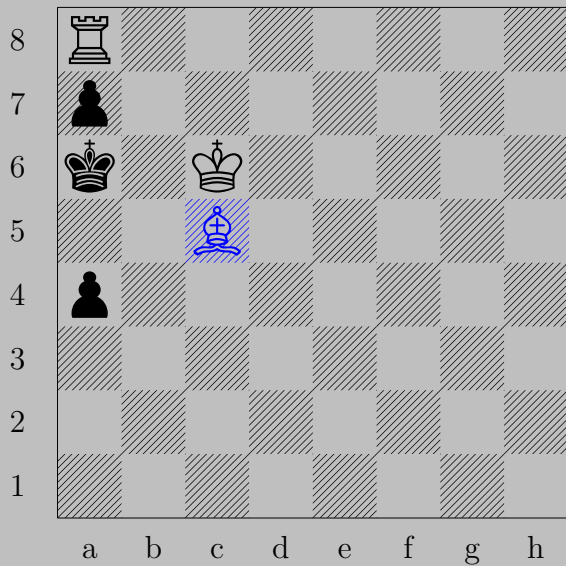
If  $\text{Kf5}$ ,  $\text{Qf6}$ . If  $\text{Kd5}$ ,  $\text{Bxf7}$ .





♔b3+, ♕a5 or ♕a6 or ♕a7  
♖a4

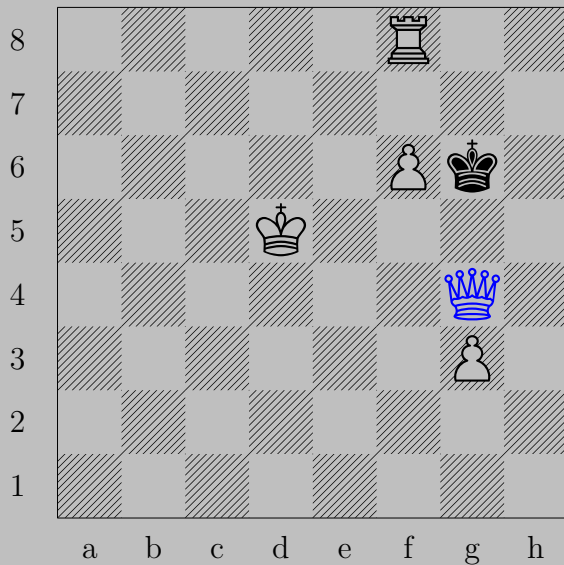




♙c5, ♚a5 or ♖a3  
♖x7

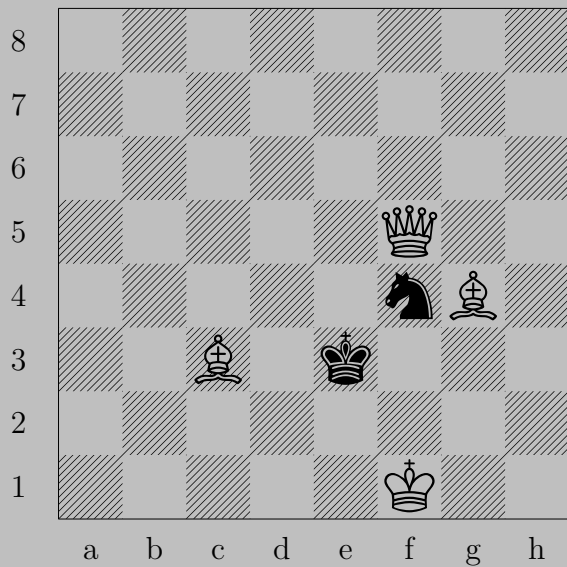






♙g4+

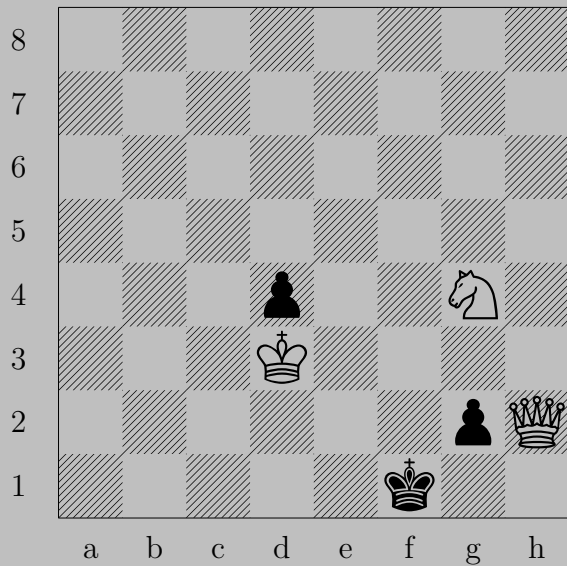
If ♔h6, ♖h8. If ♔h7, ♙g7.

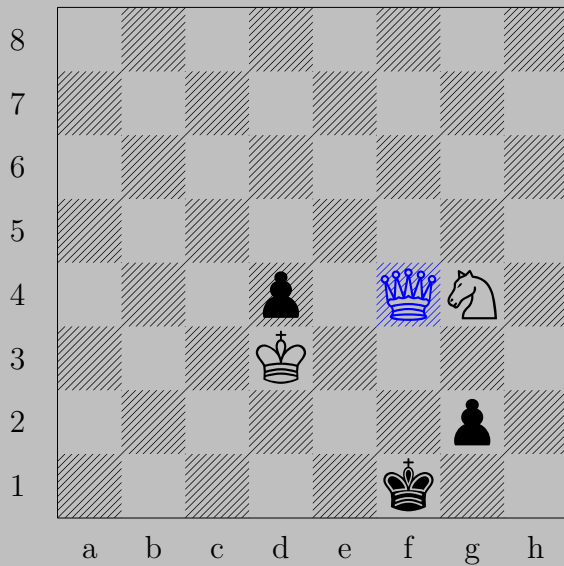




♔c5+

If ♖d3, ♙f5. If ♔e4, ♙d4.





♔f4+, ♔e1 or ♔g1

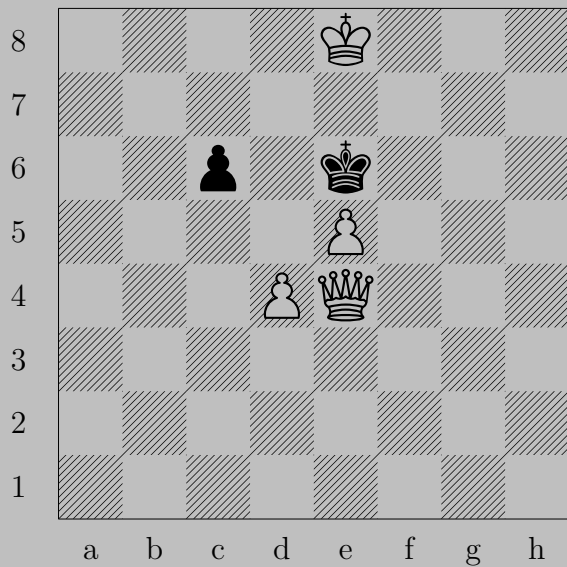
♔c1





$\text{♖h8+}, \text{♞h5}$   
 $\text{♖xh5}$

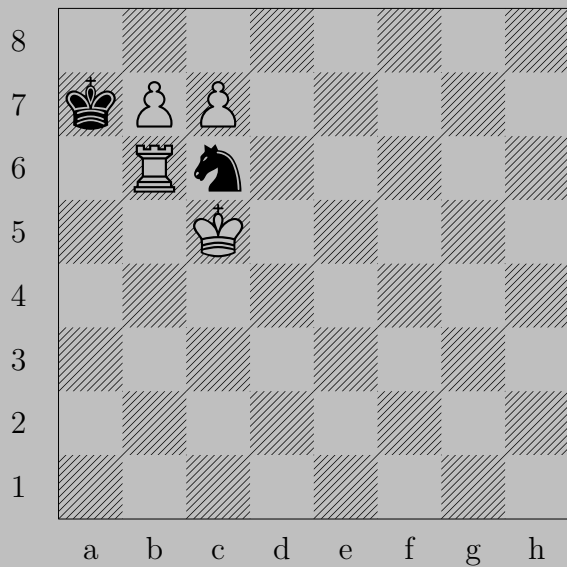






♔f3, ♖c5

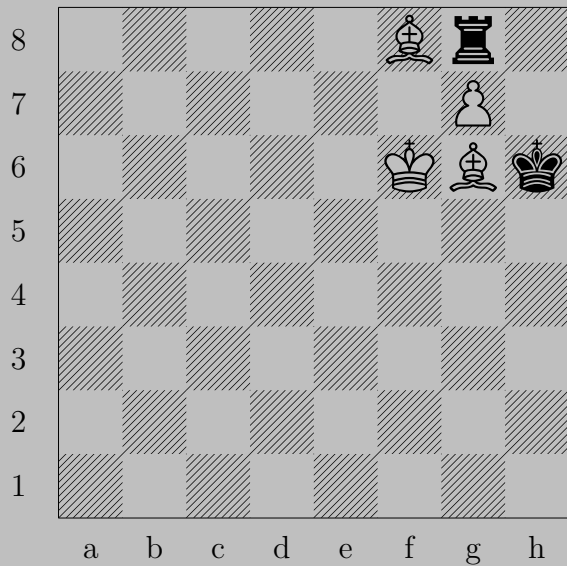
♔f7





$\text{♔b8} \text{♔}+, \text{♞} \times \text{b8}$

$\text{♔} \times \text{b8} \text{♔}$



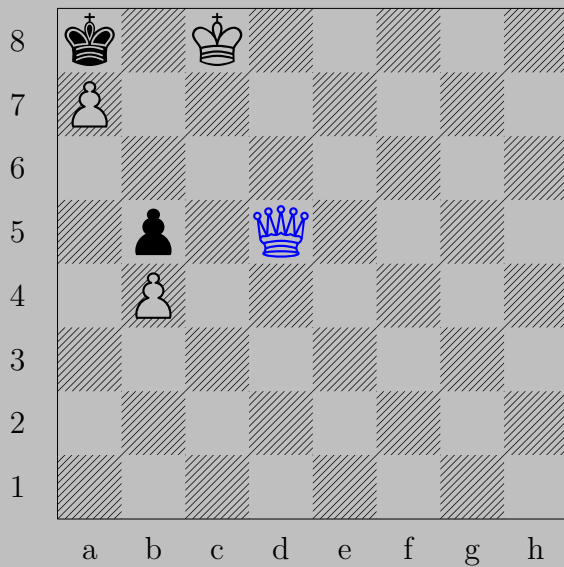


♖d6

If ♜f8+, ♕×f8♚.

Otherwise, ♖f4.



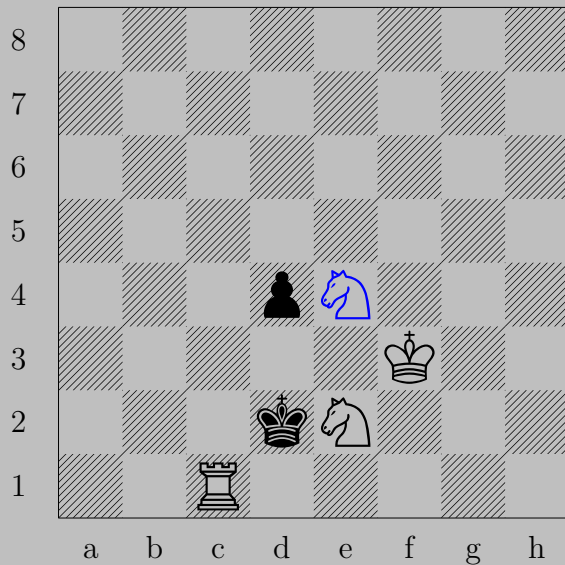


♙d5+, ♚xa7

♙b7

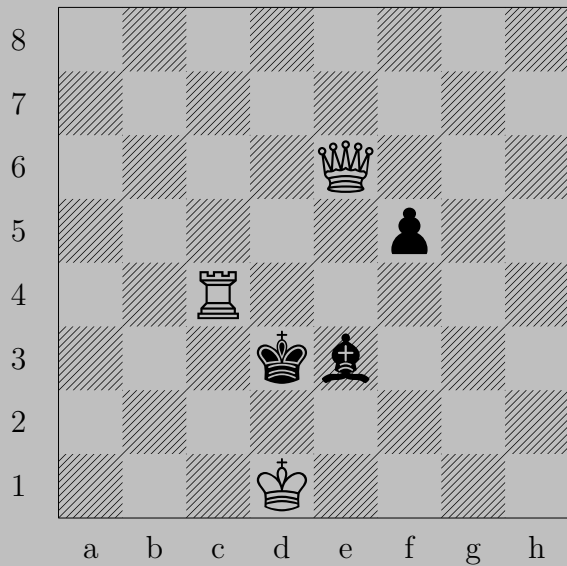






♞e4+, ♔d3

♞f4

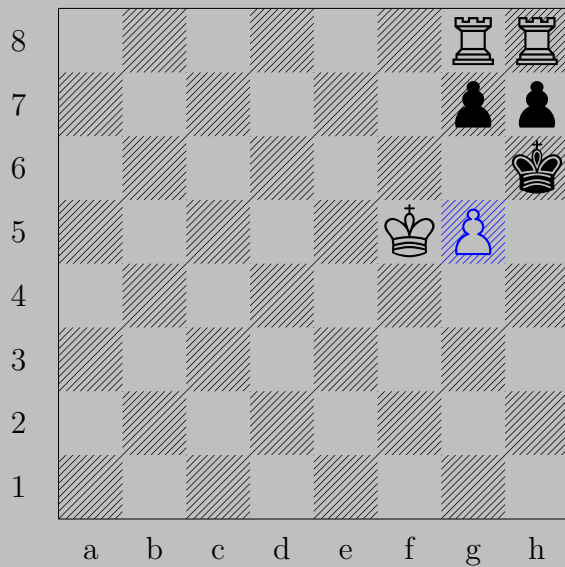




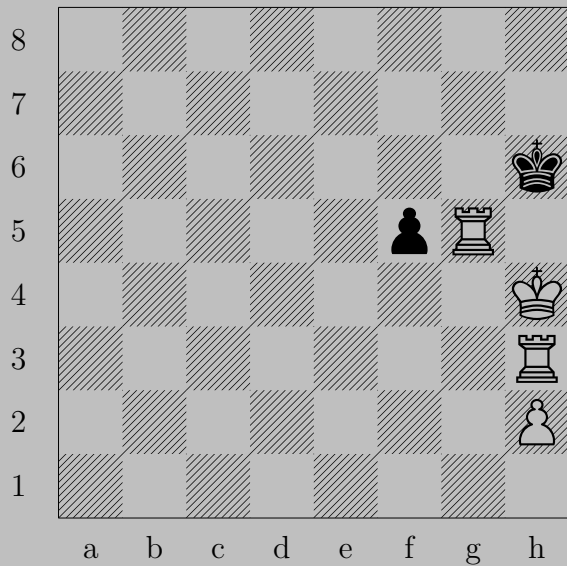
♔d5+, ♕d4

♔xd4





♙g5+, ♚h5  
♖xh7

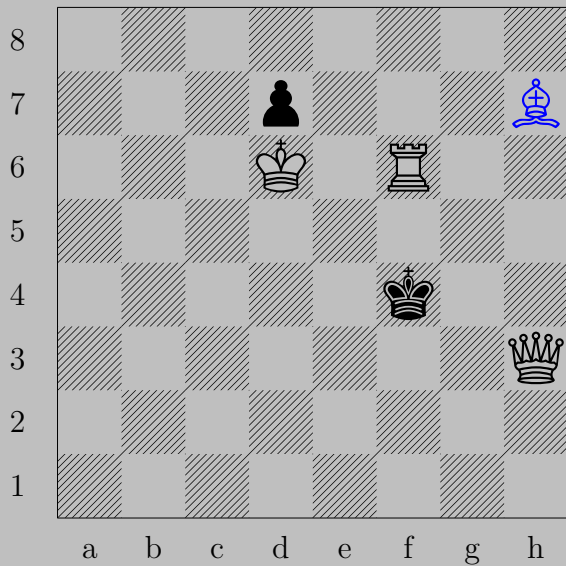




♖(h3)g3, ♘f4 or ♔h7  
♖h5

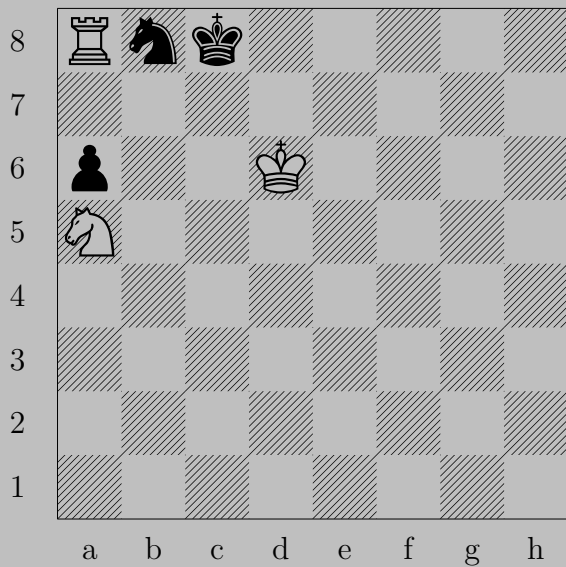




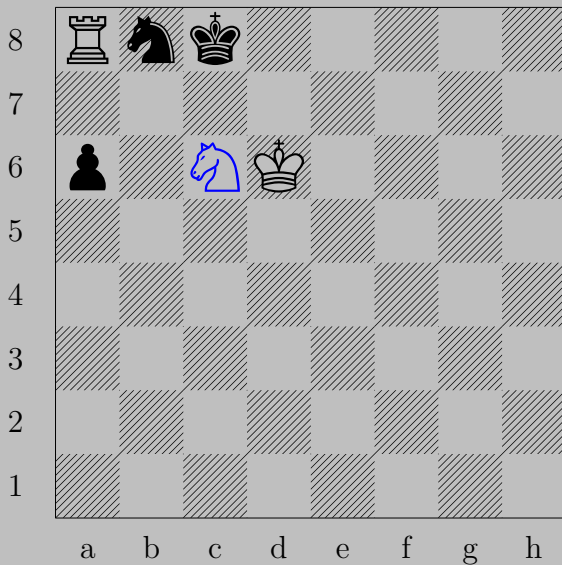


♠h7+, ♔g5  
♖f5

367



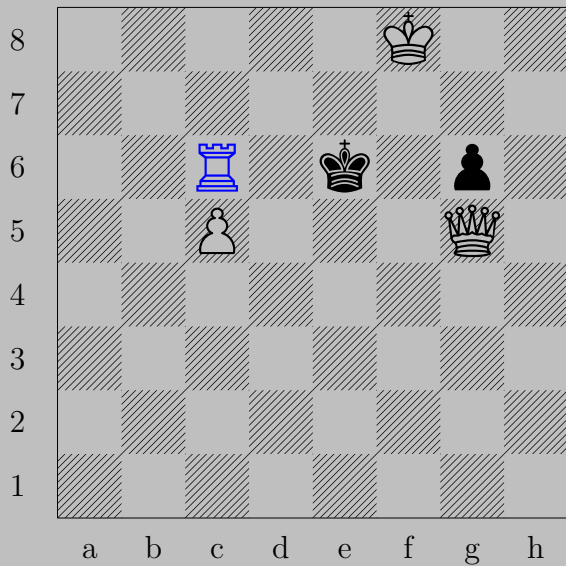
367



$\text{Nc6}$ ,  $\text{Kb7}$  or  $\text{Ba5}$

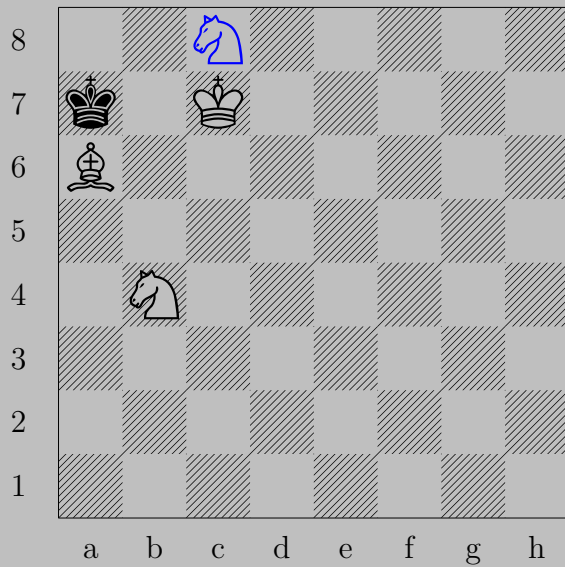
$\text{Rxb8}$





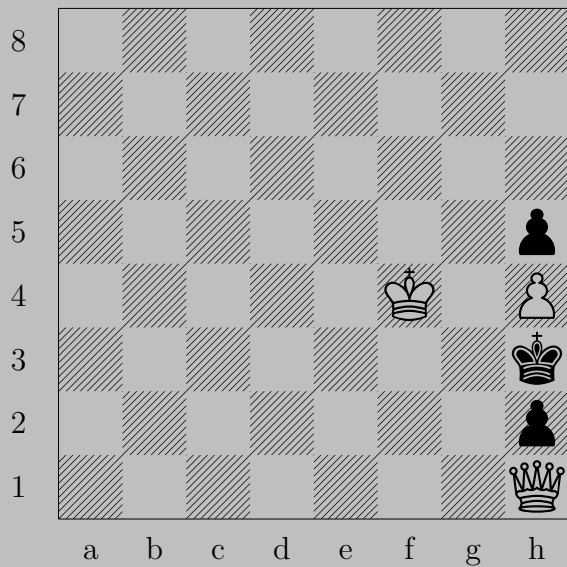
♖c6+, ♔d7  
♙d5

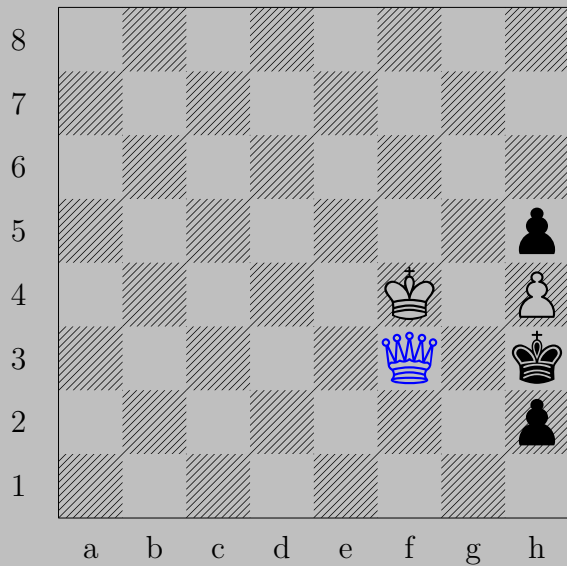




♞c8+, ♔a8  
♗b7







♔f3+, ♕xh4  
♕g3

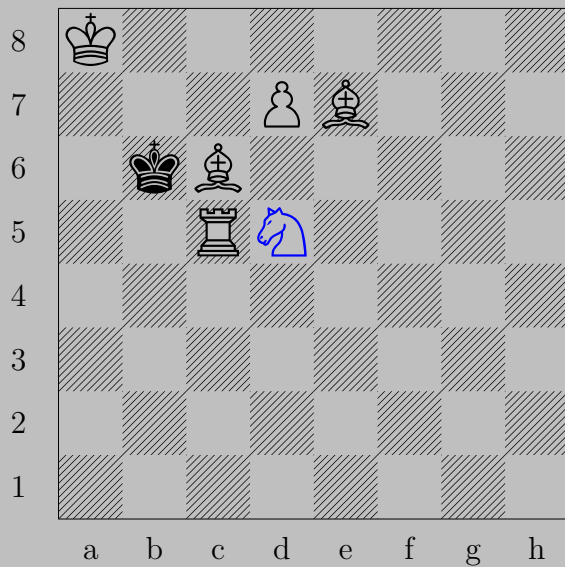




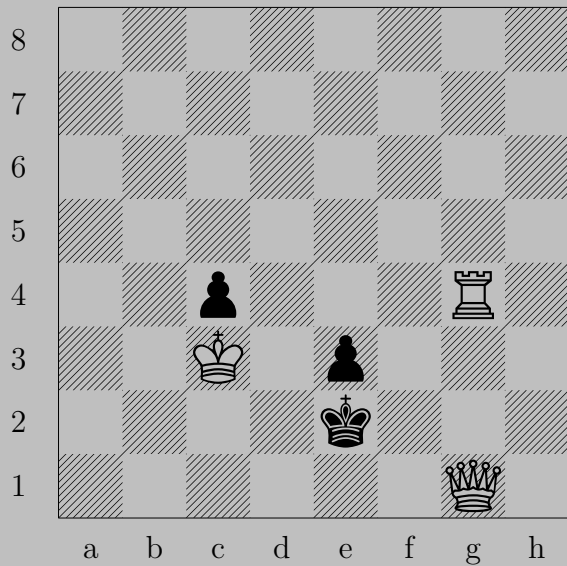
♔h1+

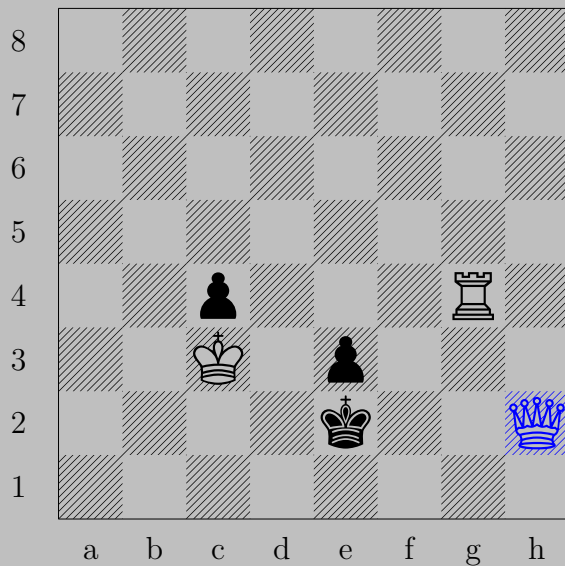
If ♔e2, ♔d1. If ♔g3, ♔h3.





♞d5+, ♔a6  
♝b7



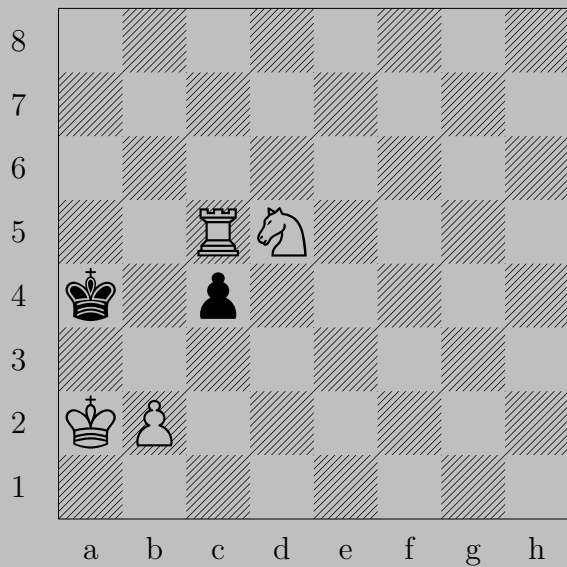


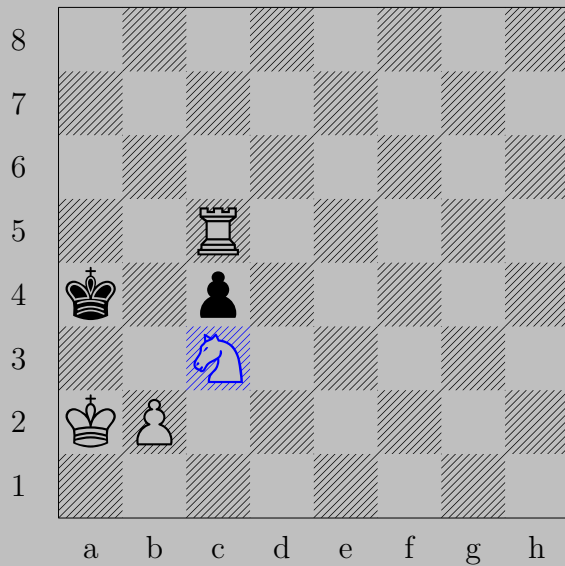
♙h2+

If ♔f3, ♙g2.

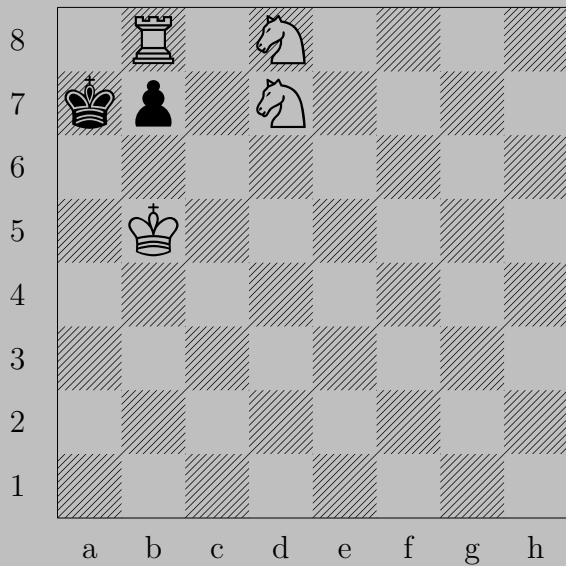
Otherwise, ♖g1.

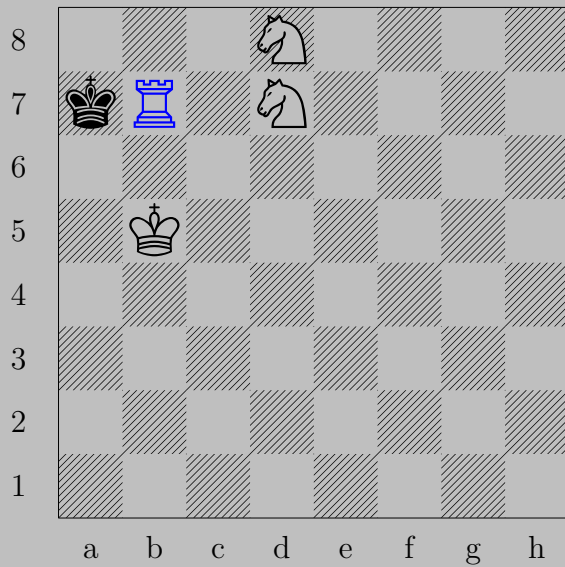






$\text{♞c3+}$ ,  $\text{♔b4}$   
 $\text{♖b5}$





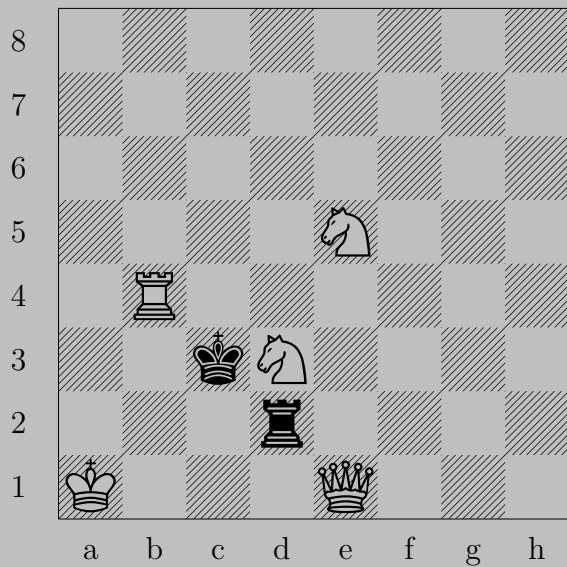
$\text{♖} \times b7+, \text{♔} a8$   
 $\text{♞} b6$

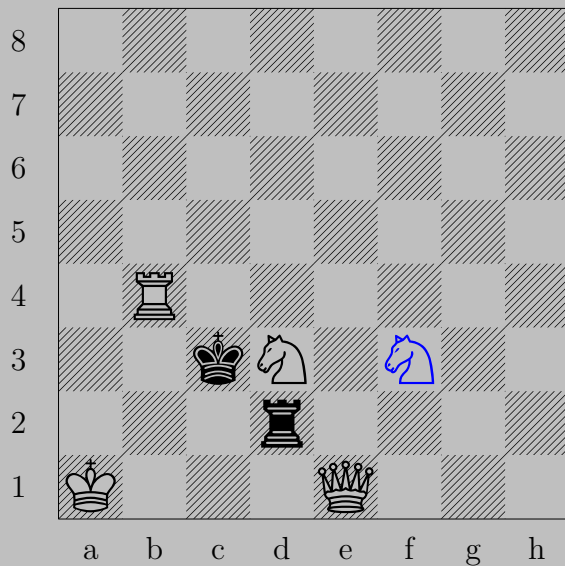




♙d3+, ♚f4

♙e3



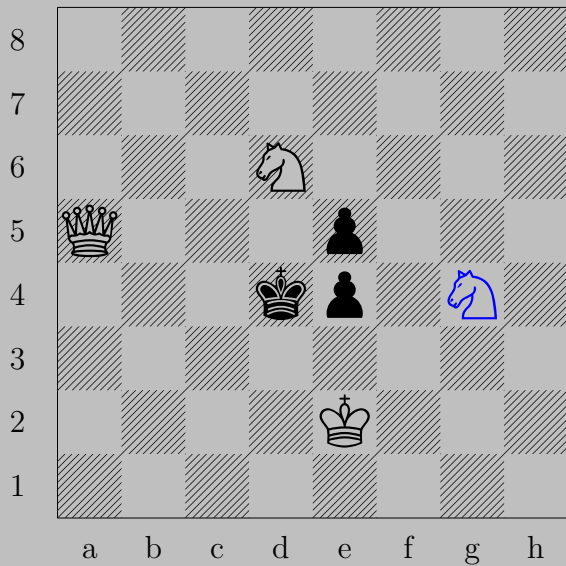




♞f3, ♔xd3 or ♔c2

♚xd2

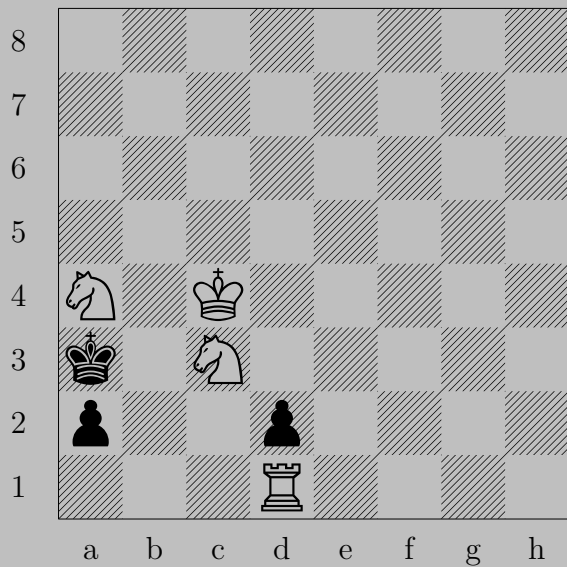


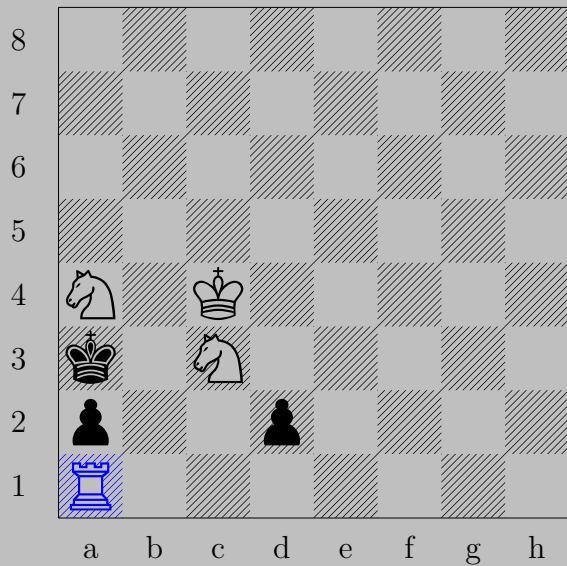




g4, e3

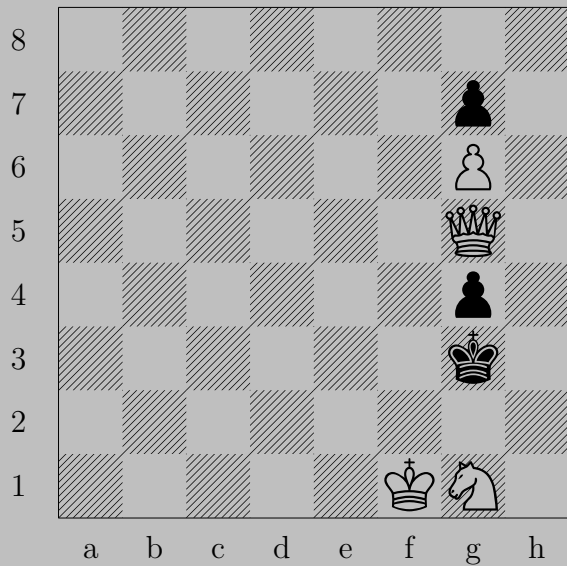
xe5

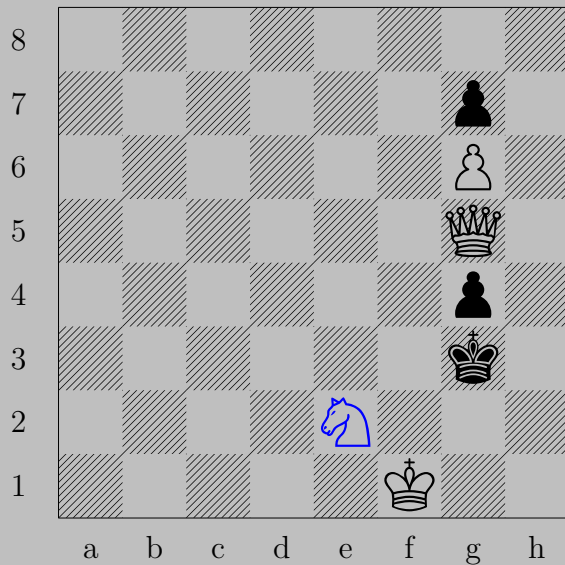




♖a1, ♘d1 ♚

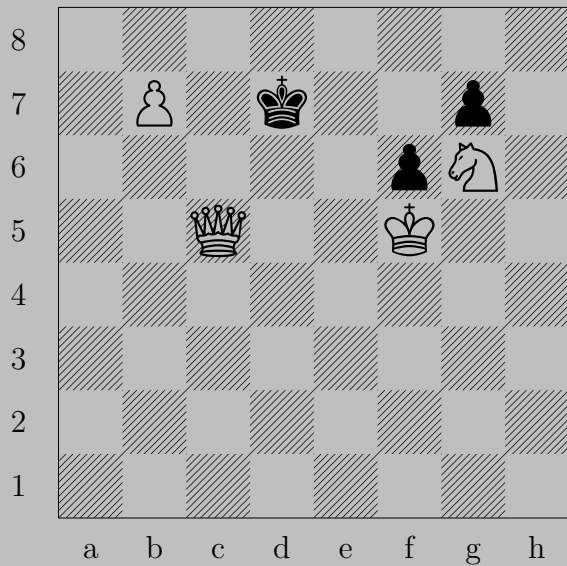
♖x2

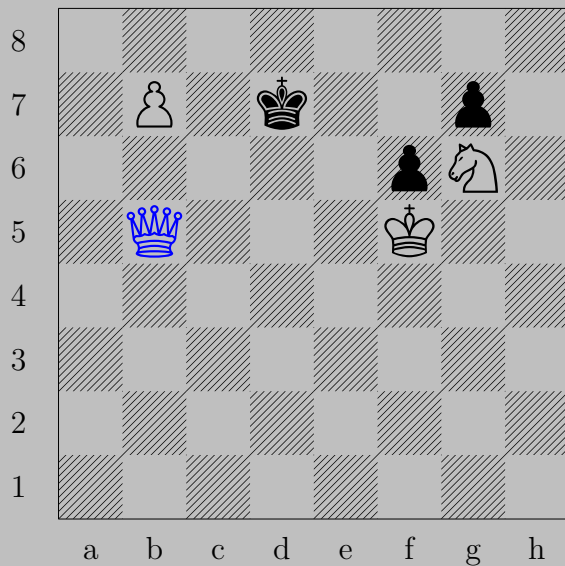




♞e2+

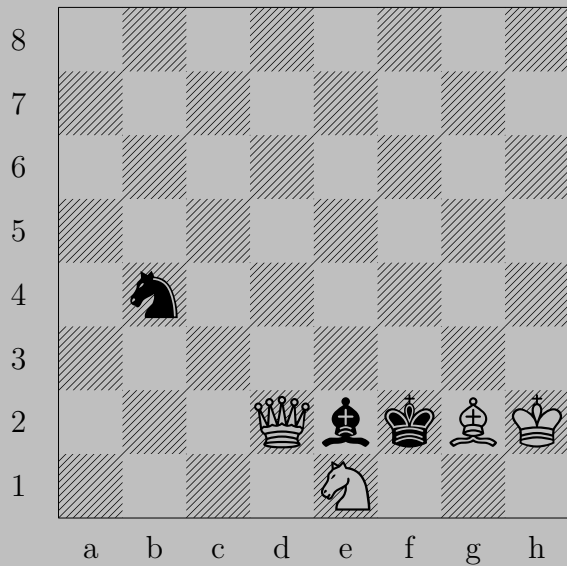
If ♚f3, ♚f4. If ♚h3 or ♚h2, ♚h5.





♙b5+. ♔d8 or ♔d6  
 ♚b8♙

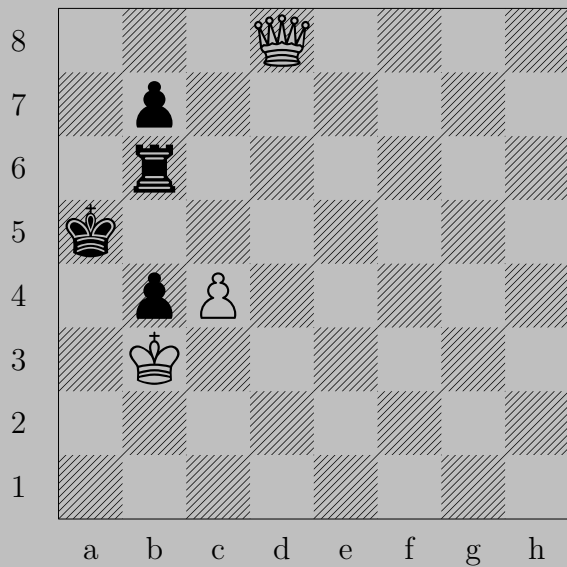


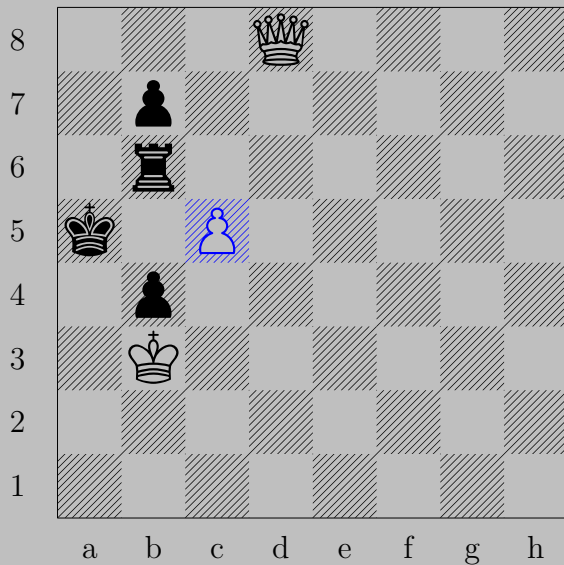




♔f3, ♔f1 or any knight move

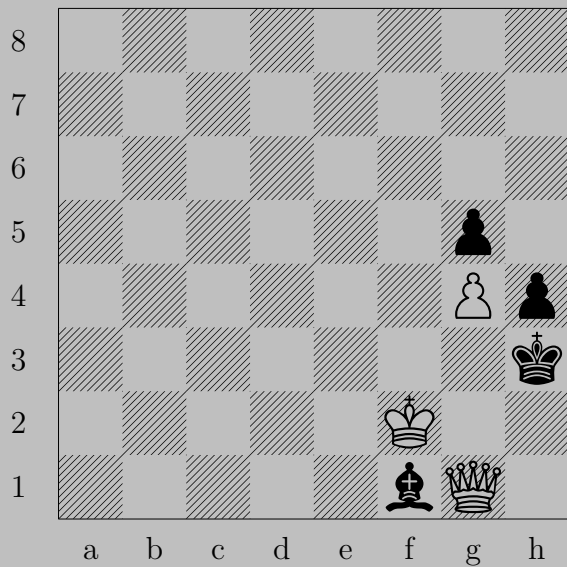
♔×e2

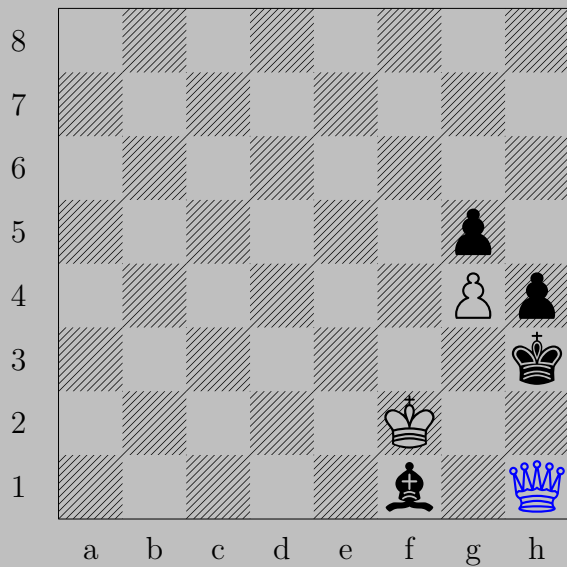




♔c5, ♕b5 or ♖a6

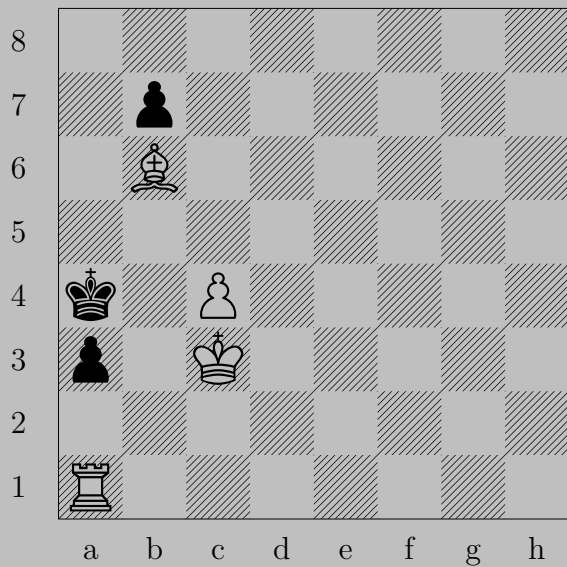
♕×b6

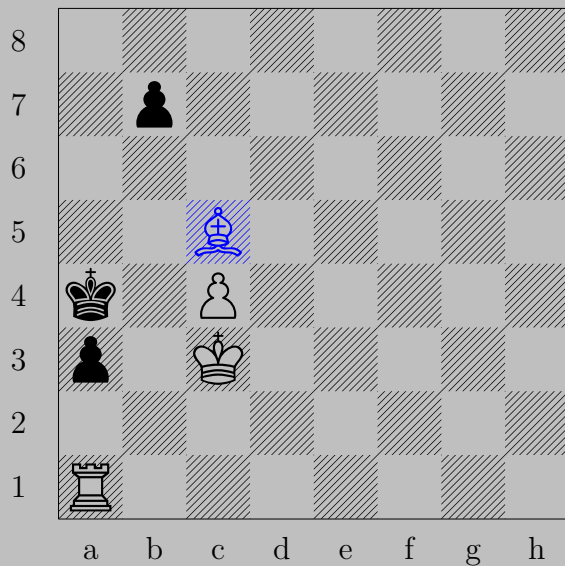




♔h1+, ♕×g4

♔f3

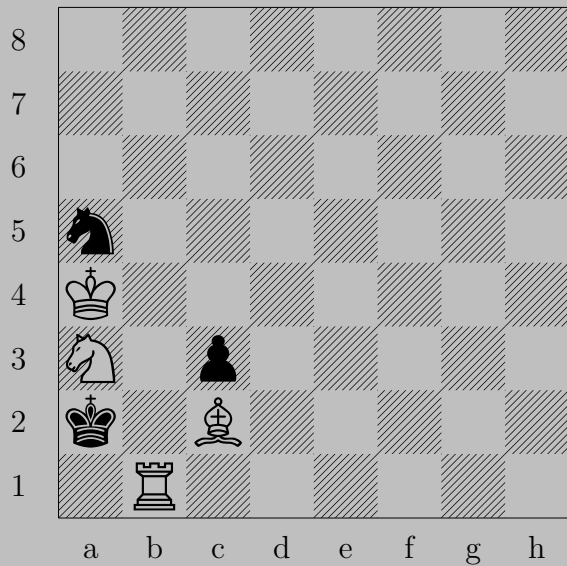


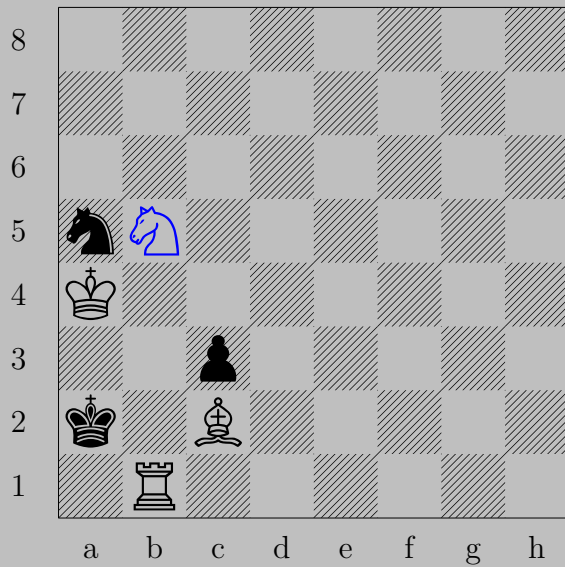


♗c5

If ♖b6 or ♔a5, ♙×a3. If ♖a2 ♙×a2.

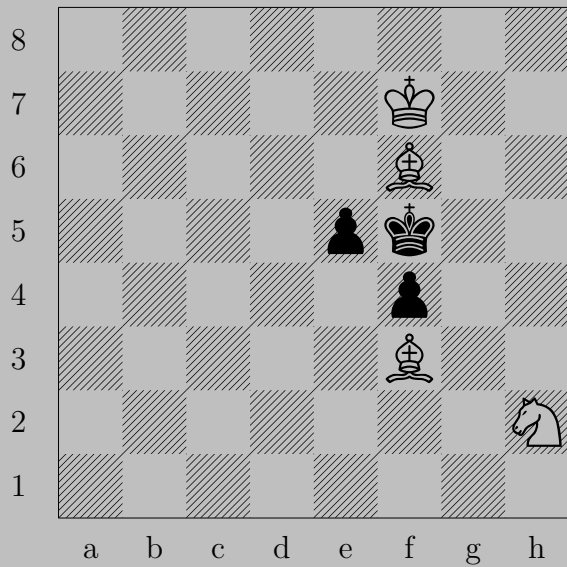


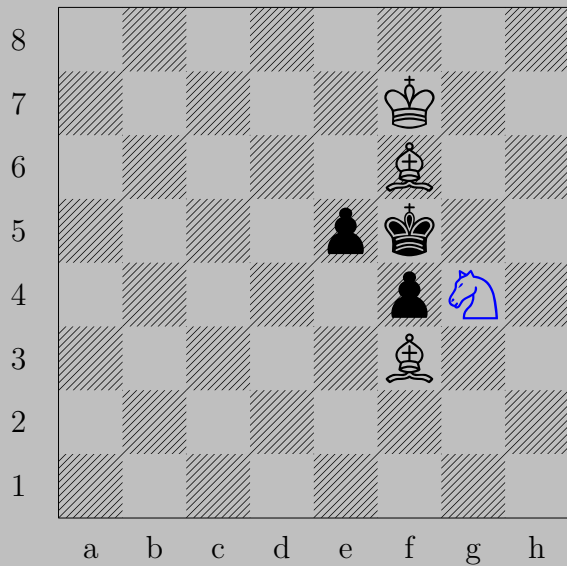




$\text{N}b5$ , any knight move

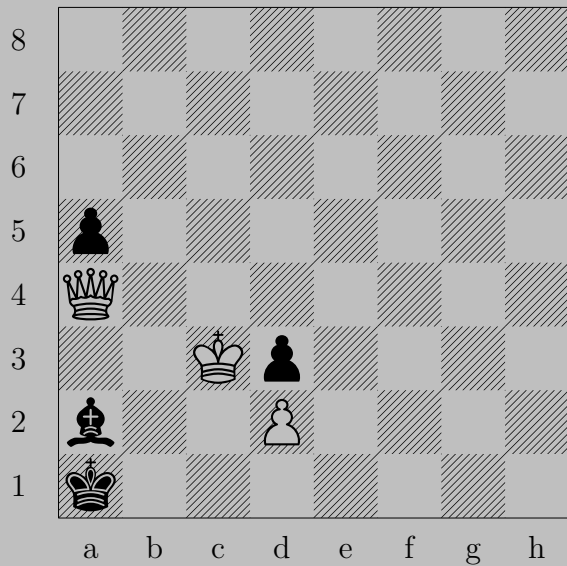
$\text{N}xc3$

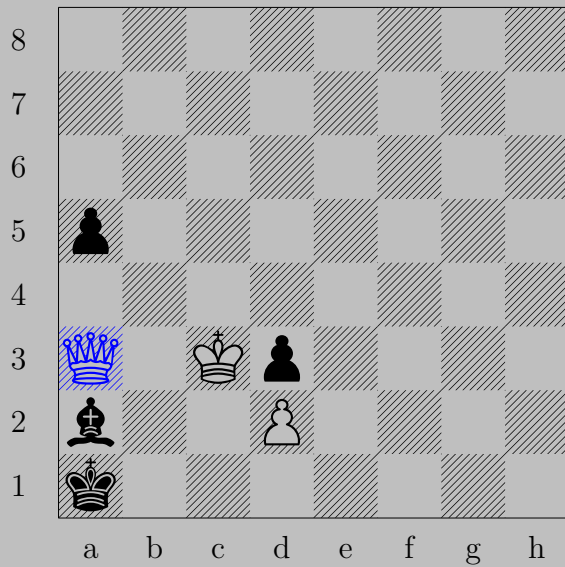




♞g4, ♖e4

♞h6

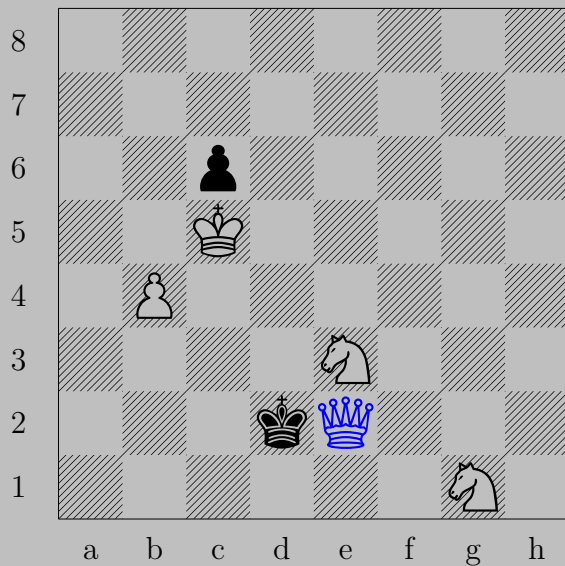




♔a3, ♔b1 or ♕a4

♔b2



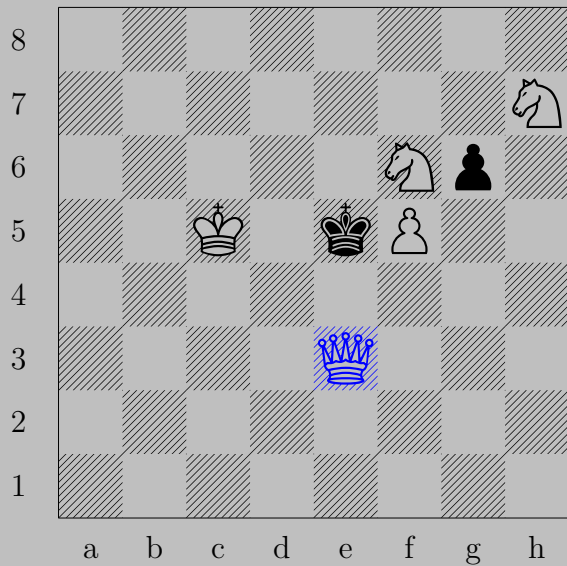


♔e2+, ♕c1 or ♕c3

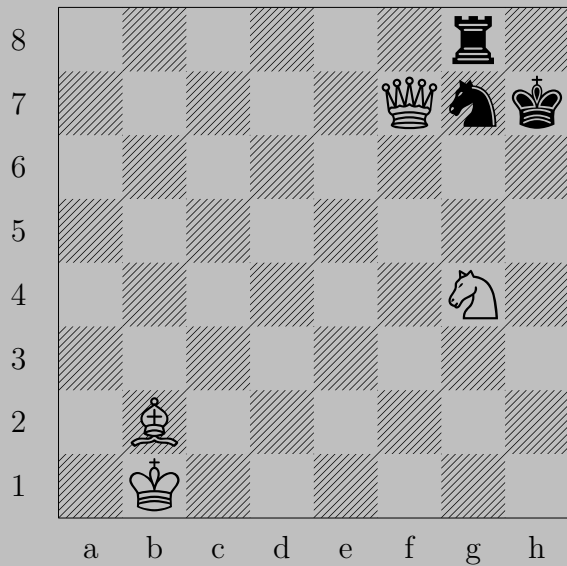
♕c2







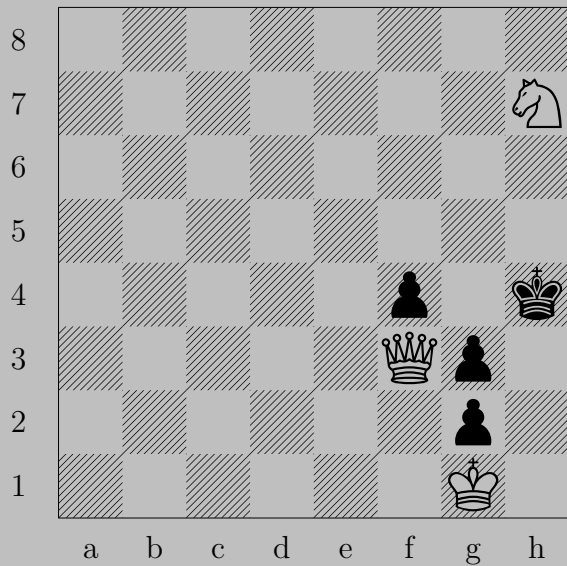
♙e3+, ♙xf5  
♙e4





$\text{Nf6+}$

If  $\text{Kh8}$ ,  $\text{Qxg8}$ . If  $\text{Kh6}$ ,  $\text{Bc1}$ .

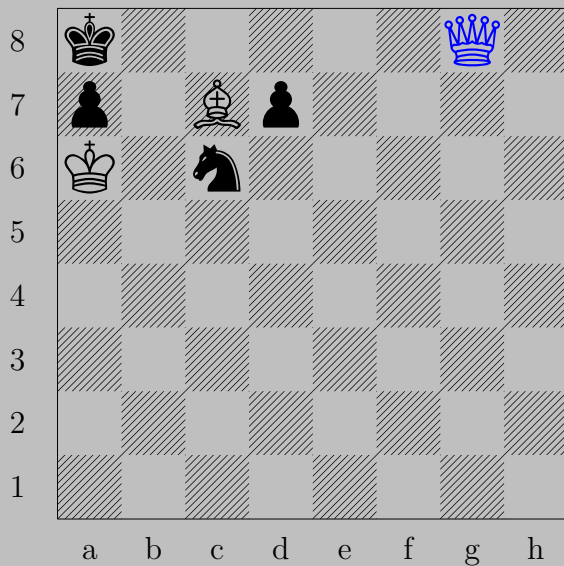




♔×f4+

If ♔h3, ♘g5. If ♔h5, ♔g5.



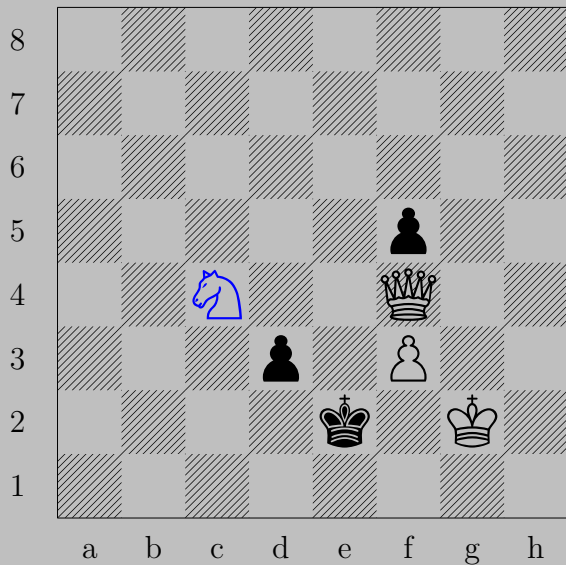


♔g8+

If ♘d4, ♔xd4. If ♘d2, ♔xd2.

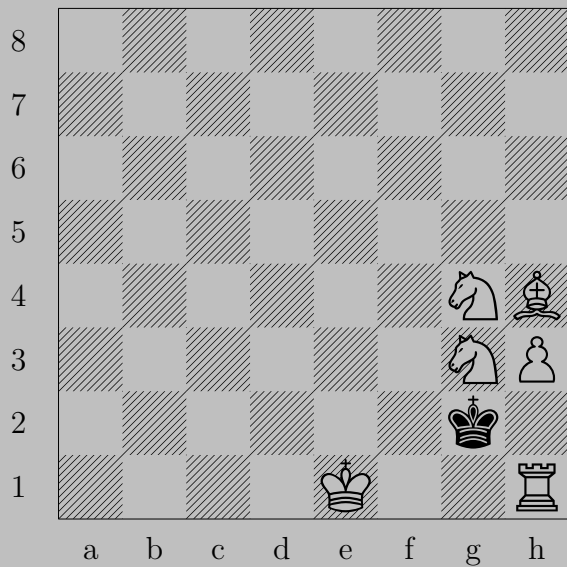






$\text{Nc4}$

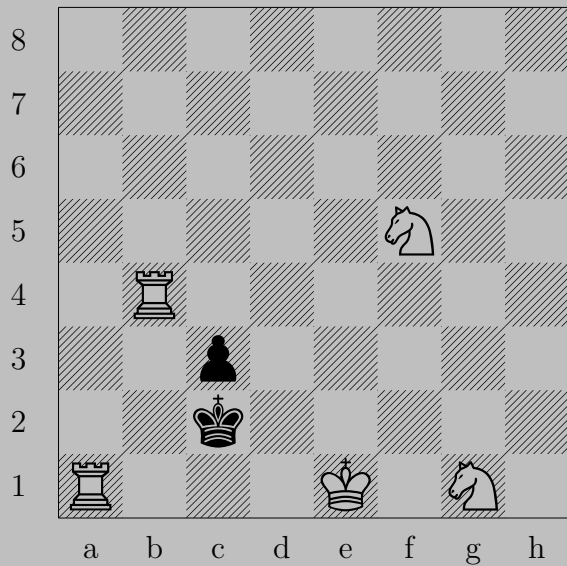
If  $\text{P}d2$ ,  $\text{Q} \times d2$ . If  $\text{K}d1$  or  $\text{K}e1$ ,  $\text{Q}d2$ .





$\text{R}h2+$

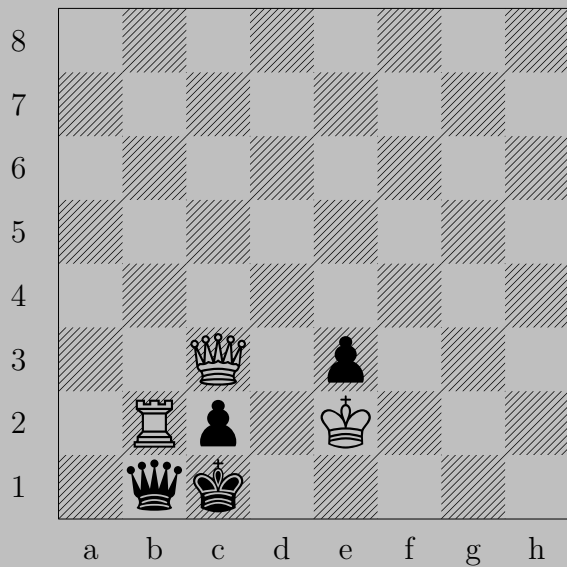
If  $\text{K}f3$ ,  $\text{R}f2$ . If  $\text{K}g1$ ,  $\text{N}e2$ .

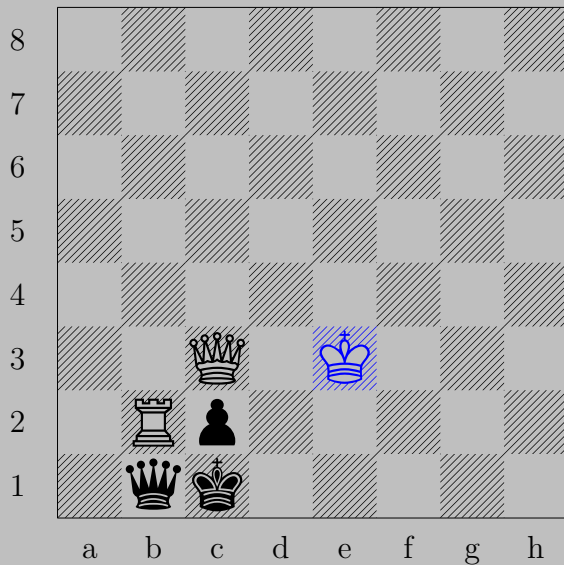




♖a2+

If ♔d3, ♖d4. If ♔c1, ♘e2.



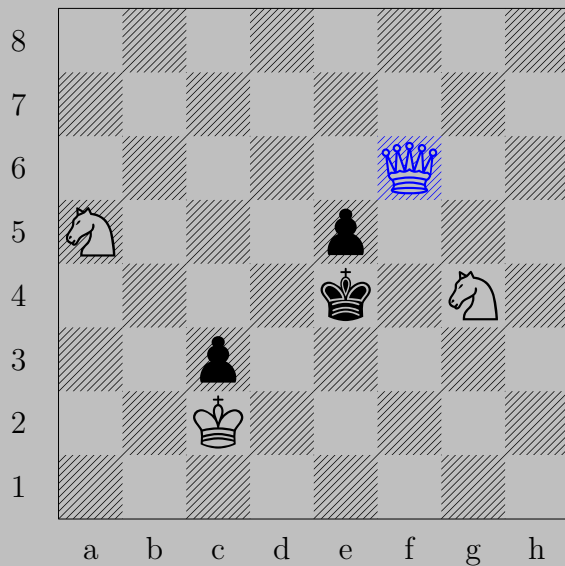


♔xe3

If ♖xb2, ♔e1. If ♔d1, ♖d2. If ♖a1 or ♖a2, ♖xc2.

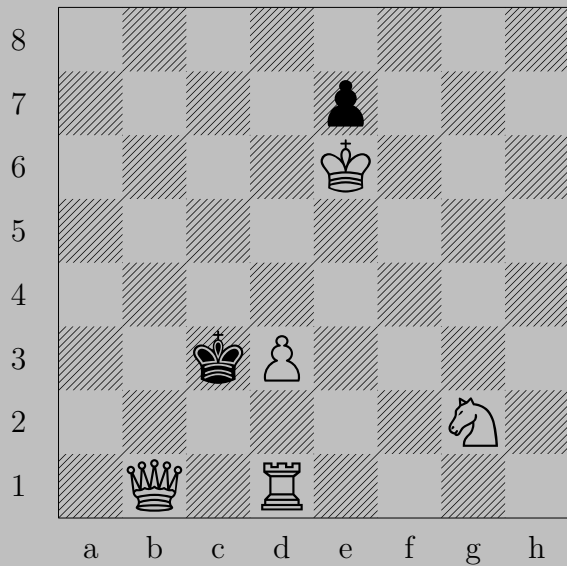


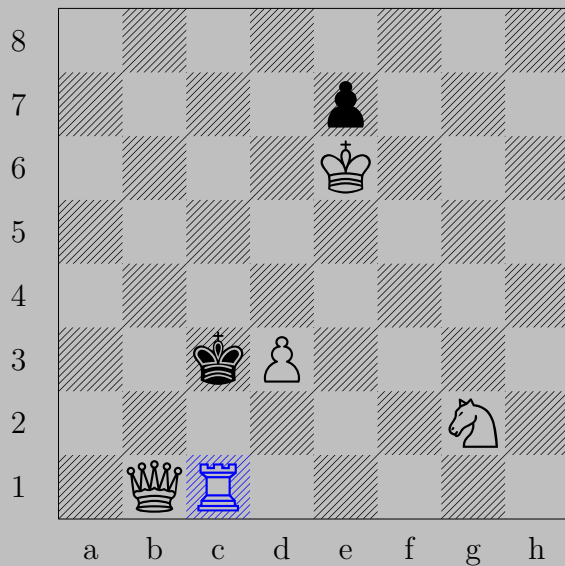




♙f6, ♖d4 or ♖d5

♙xe5

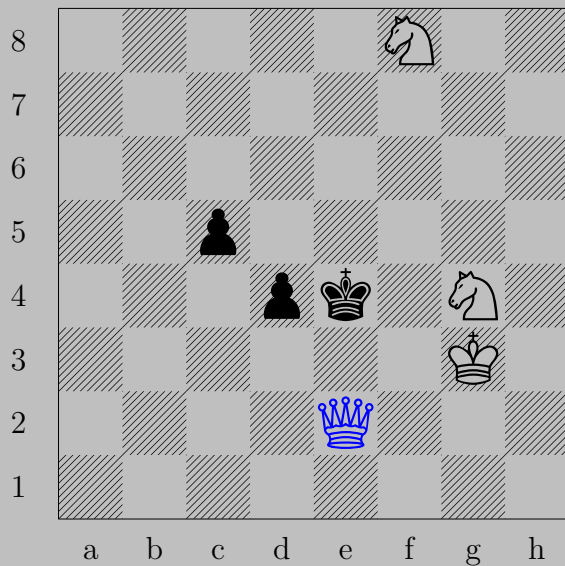




$\text{Rc1+}$

If  $\text{Kd4}$ ,  $\text{Rc4}$ . If  $\text{Kd2}$ ,  $\text{Qc2}$ .





♙e2+

If ♔f5, ♙e5. If ♔d5, ♙e6.