

Chess Puzzles

3301-3400

Mate in Two

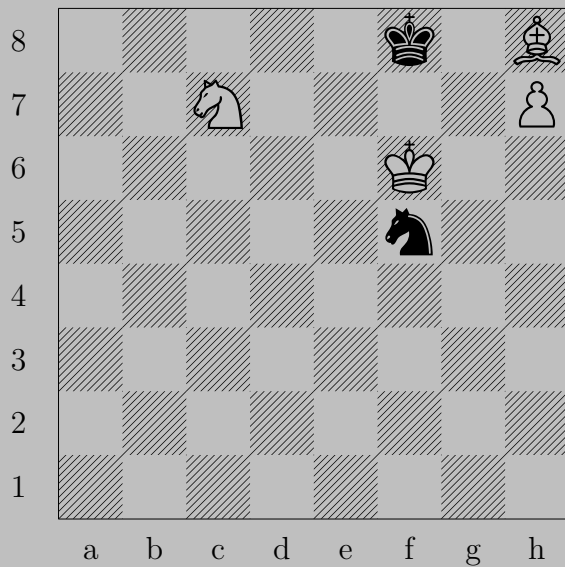
White to Move

László Polgár

Links

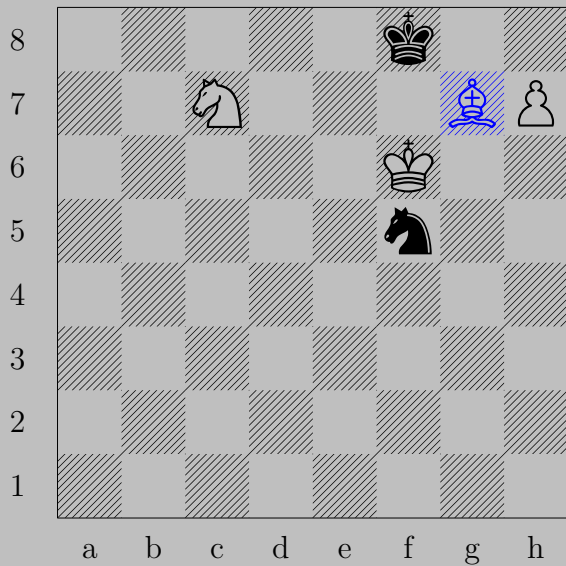
3301	3302	3303	3304	3305	3306	3307	3308	3309	3310
3311	3312	3313	3314	3315	3316	3317	3318	3319	3320
3321	3322	3323	3324	3325	3326	3327	3328	3329	3330
3331	3332	3333	3334	3335	3336	3337	3338	3339	3340
3341	3342	3343	3344	3345	3346	3347	3348	3349	3350
3351	3352	3353	3354	3355	3356	3357	3358	3359	3360
3361	3362	3363	3364	3365	3366	3367	3368	3369	3370
3371	3372	3373	3374	3375	3376	3377	3378	3379	3380
3381	3382	3383	3384	3385	3386	3387	3388	3389	3390
3391	3392	3393	3394	3395	3396	3397	3398	3399	3400

3301



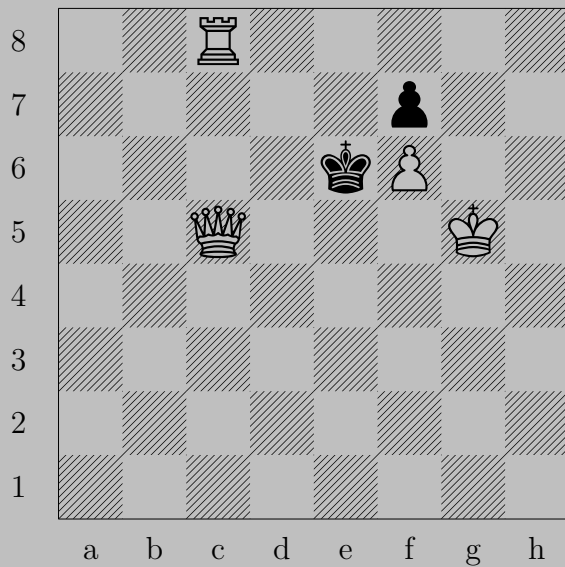
E. Szentgyörgyi, 1936

3301



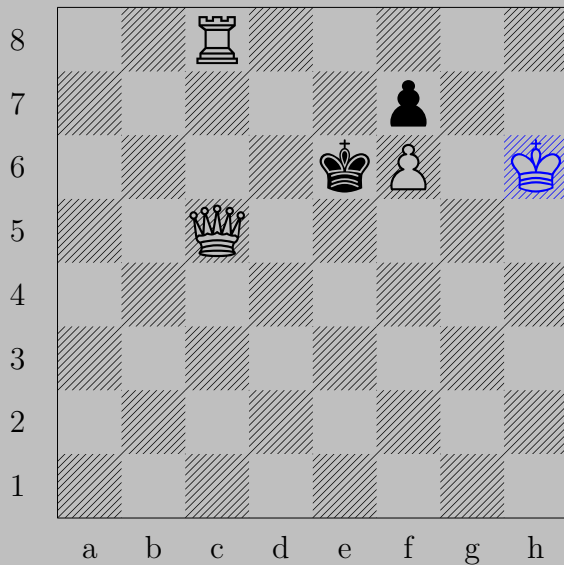
♔g7+, ♞xg7
♙h8(♚)

3302



E. Szentgyörgyi, 1936

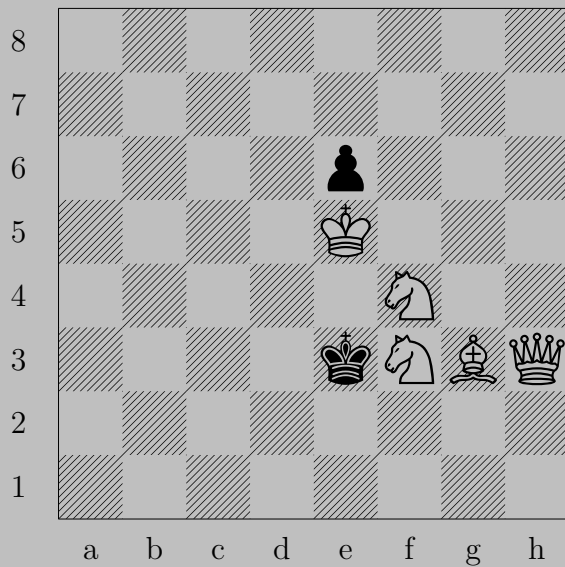
3302



♔h6

If ♕×f6, ♖c6. If ♔d7, ♕c6.

3303



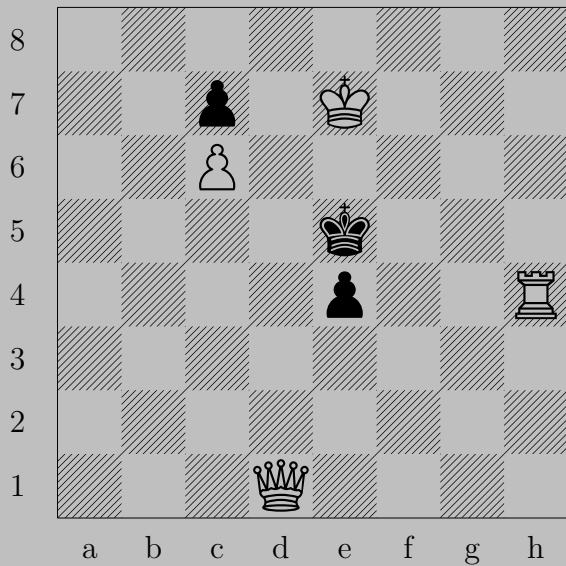
E. Szentgyörgyi, 1936

3303



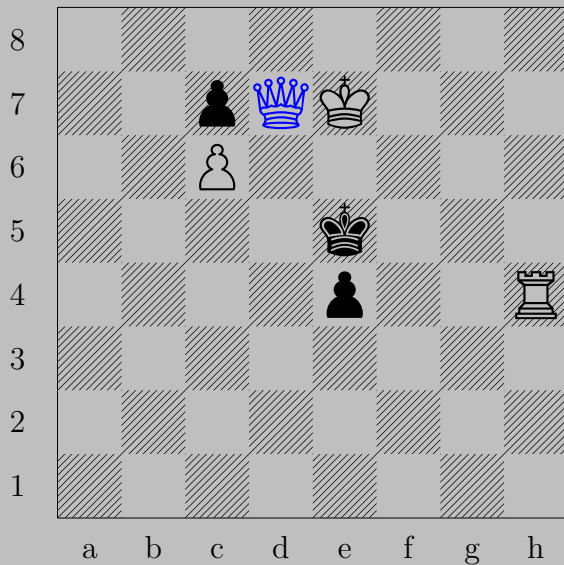
♔h3, ♕f2
♔g1

3304



E. Szentgyörgyi, 1936

3304



♔d7, ♕e3

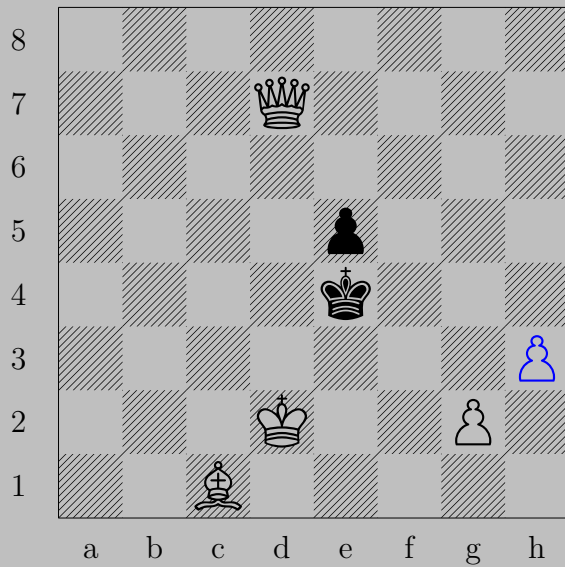
♔e6

3305



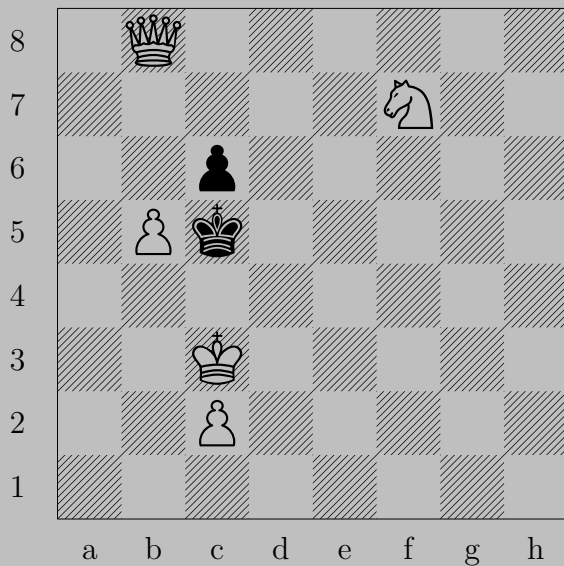
E. Szentgyörgyi, 1936

3305



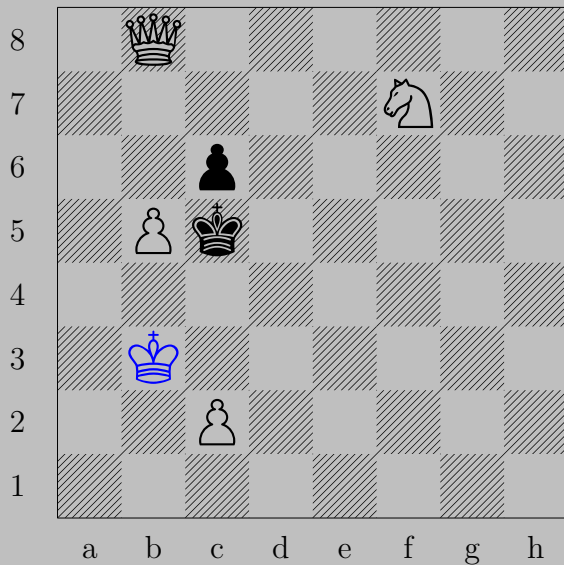
♖h3, ♔f4
♚g4

3306



E. Szentgyörgyi, 1936

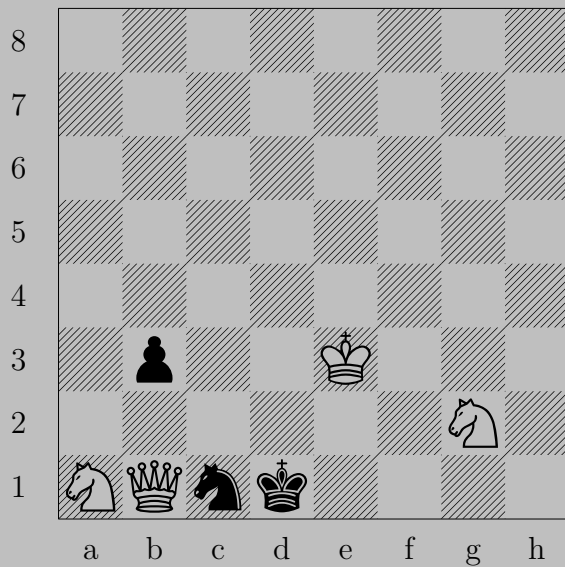
3306



♔b3

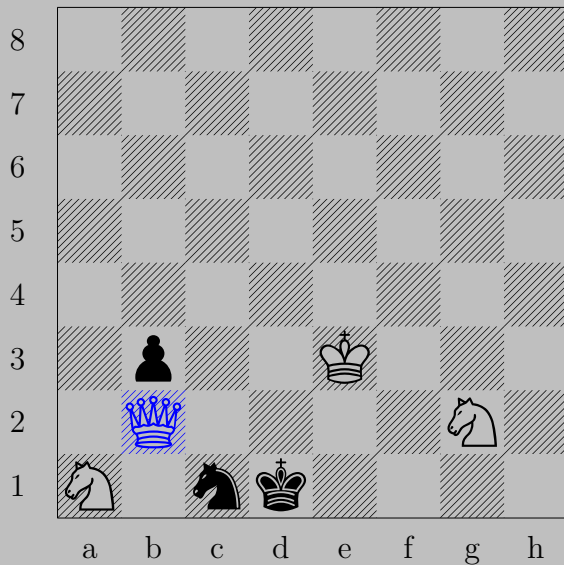
If ♙×b5, ♔d6. If ♔d4 or ♔d5, ♔e5.

3307



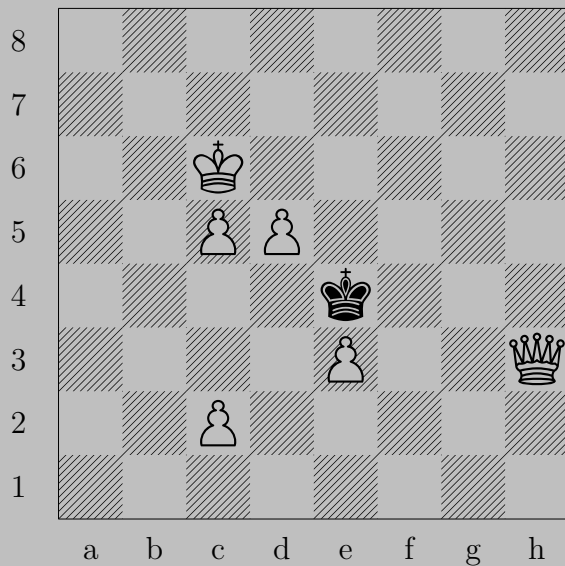
E. Szentgyörgyi, 1936

3307

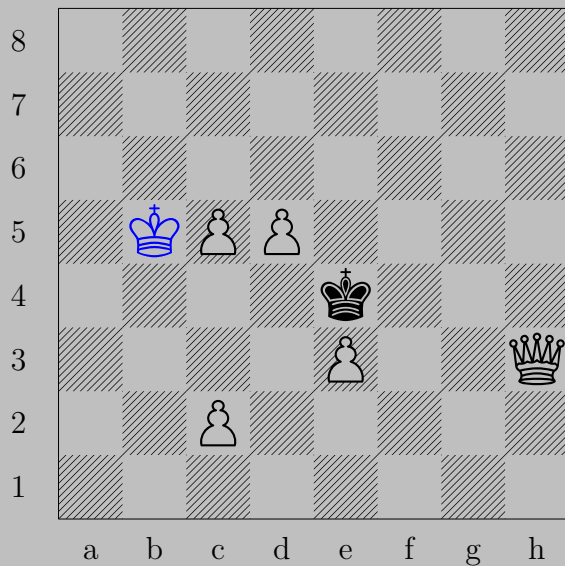


♙b2, ♘a2 or ♘d3 or ♘e2

♙d2



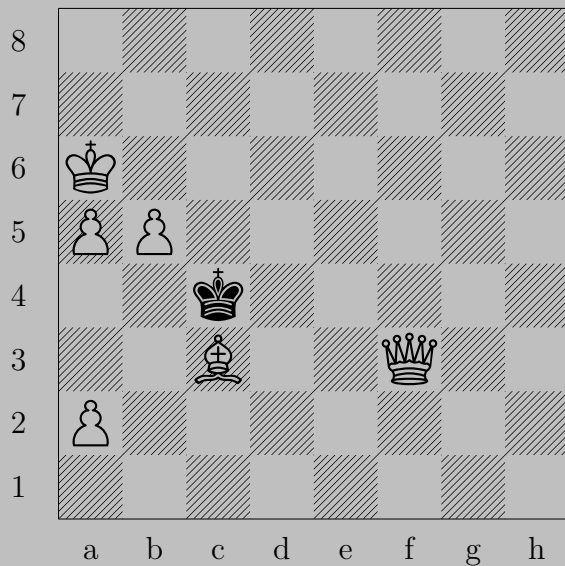
3308



♔b5

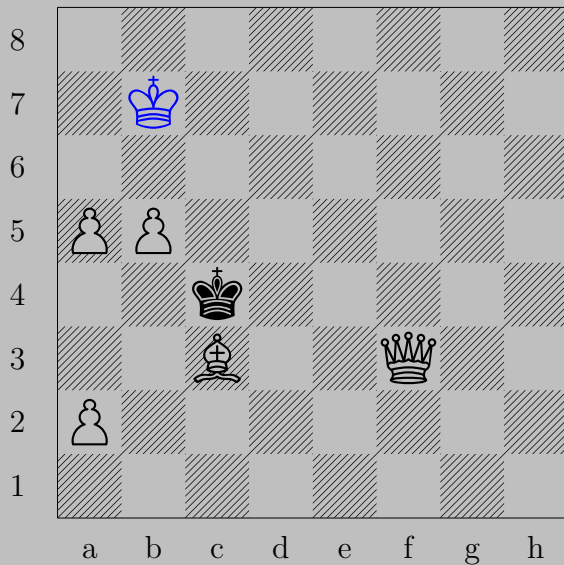
If ♖×d5, ♕f5. If ♔e5, ♕e6.

3309



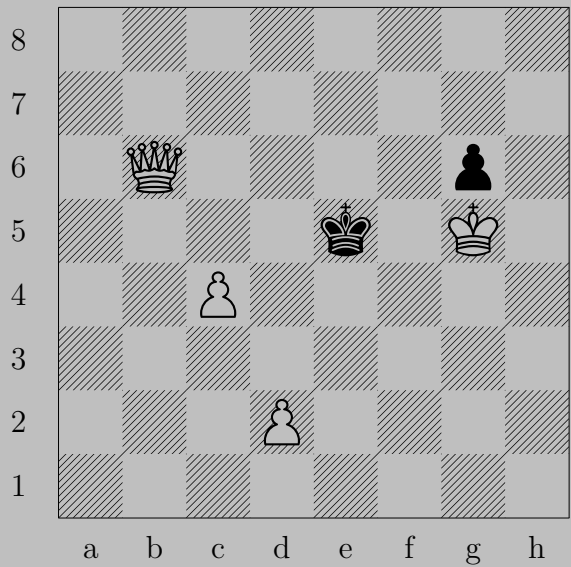
E. Szentgyörgyi, 1936

3309



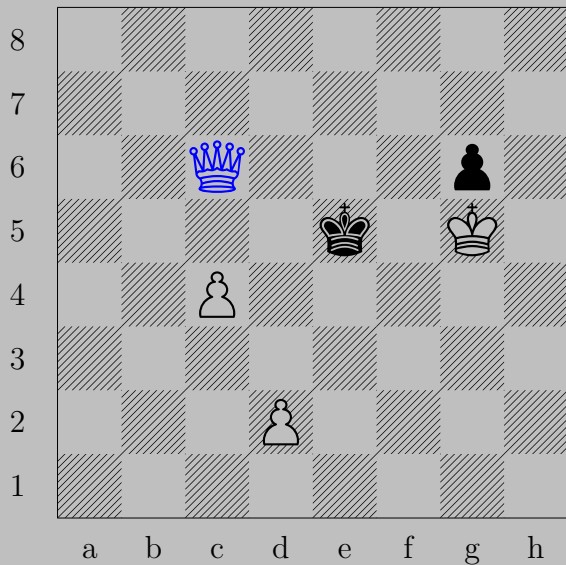
♔b7, ♕×b5 or ♕c5
♔c6

3310



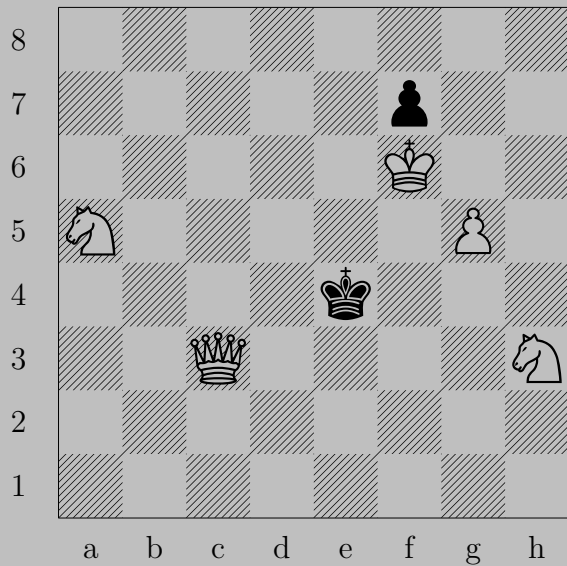
E. Szentgyörgyi, 1936

3310



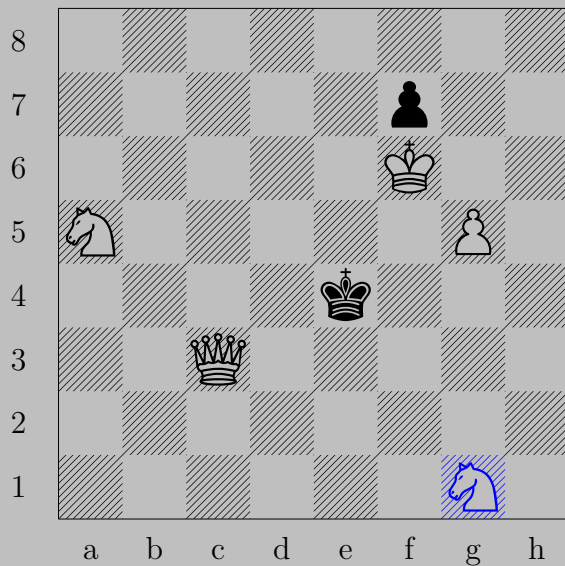
♙c6, ♚d4
♙d5

3311



E. Szentgyörgyi, 1936

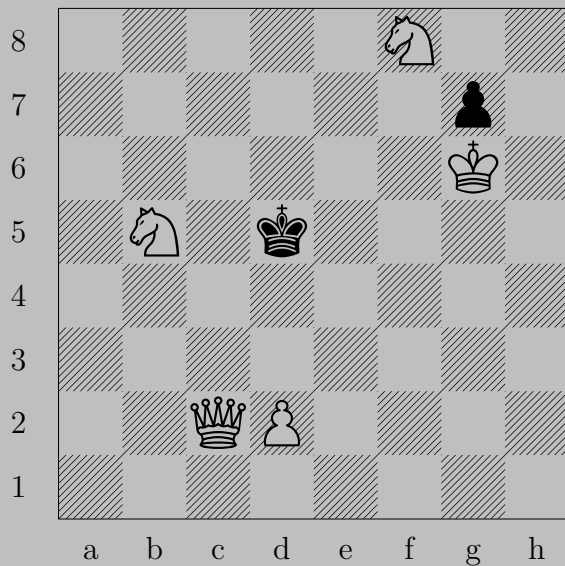
3311



♞g1

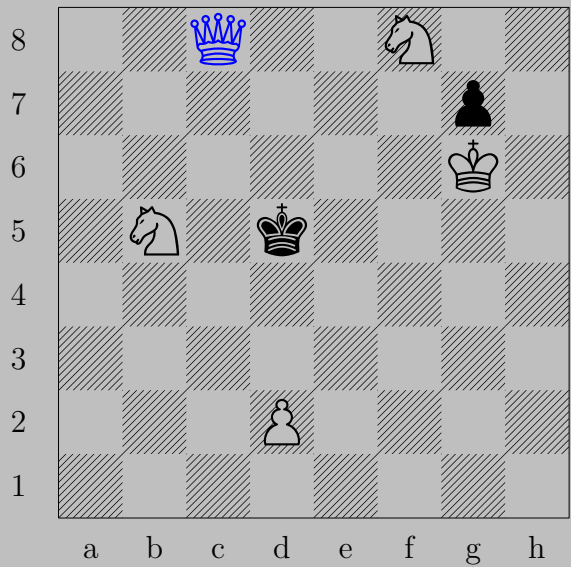
If ♔d5 , ♚e5 . If ♔f4 , ♚f3 .

3312



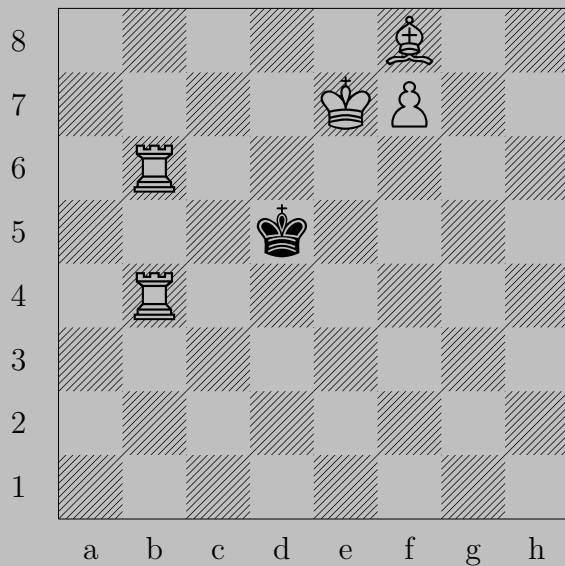
E. Szentgyörgyi, 1936

3312



♔c8, ♔e4 or ♔e5
♔f5

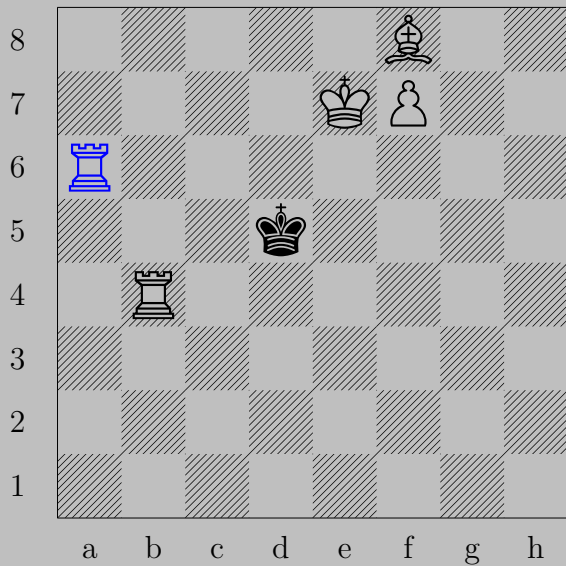
3313



E. Szentgyörgyi, 1936

See [3317](#)

3313



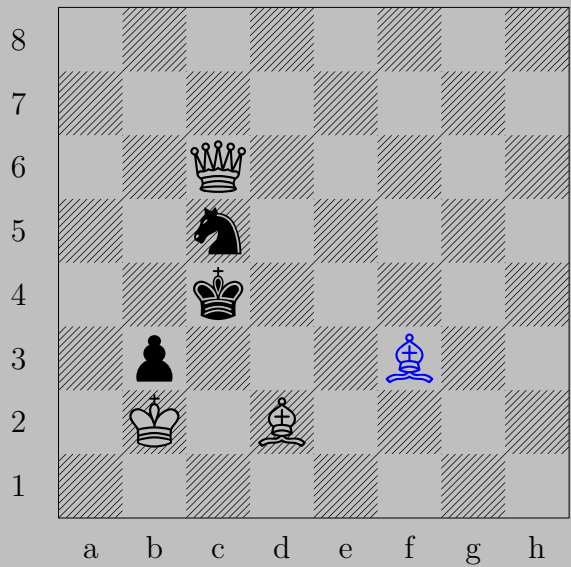
♖a6, ♔c5
♔e6

3314



E. Szentgyörgyi, 1936

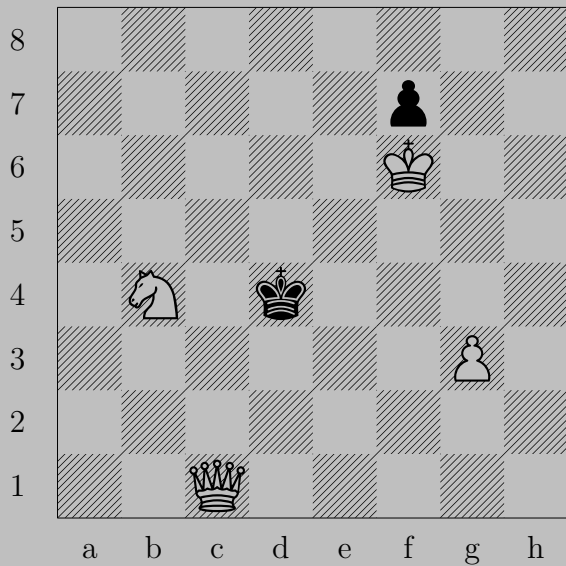
3314



♖f3, ♔d3 or ♔d4

♚d5

3315



E. Szentgyörgyi, 1936

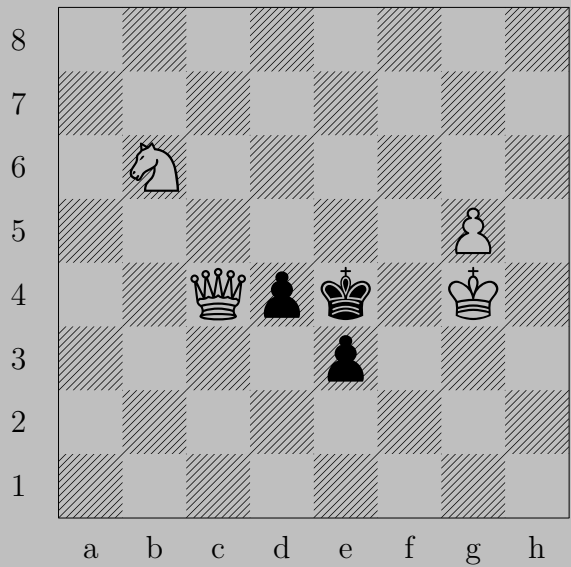
3315



♔xf7, ♔e4 or ♔e5

♕f4

3316



E. Szentgyörgyi, 1936

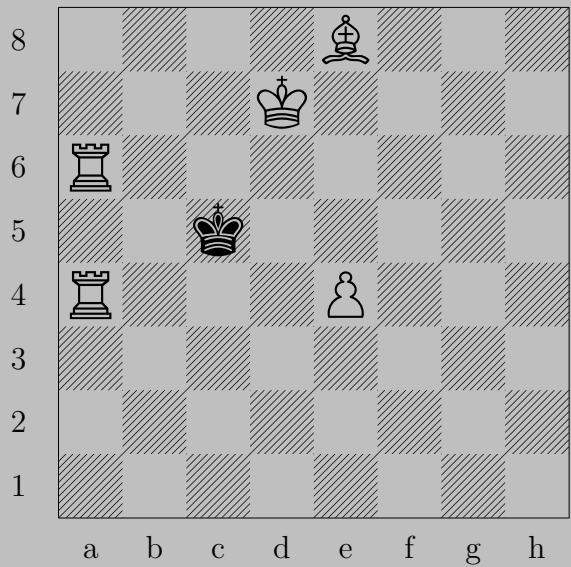
3316



♙b5

If ♟d3, ♙d5. If ♟e2, ♙xe2.

3317



E. Szentgyörgyi, 1936

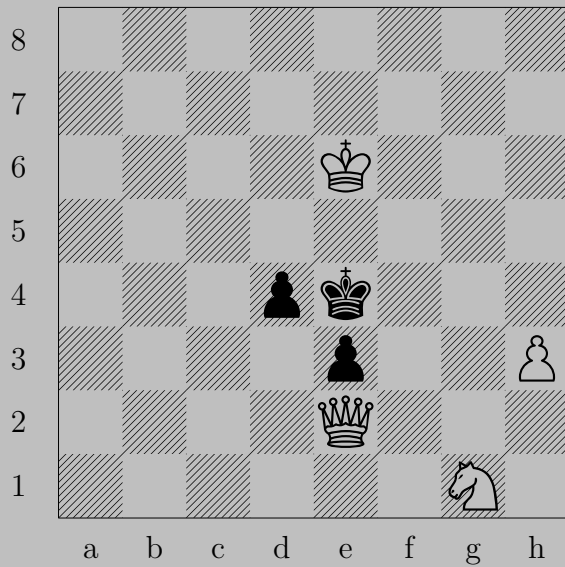
See [3313](#)

3317

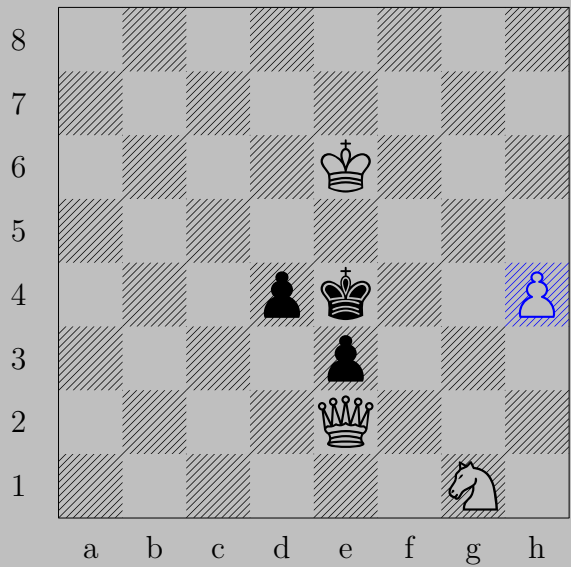


$\triangleleft e5$

If $\triangleleft b5$, $\triangleleft d6$. If $\triangleleft d5$, $\triangleleft (a6)a5$.

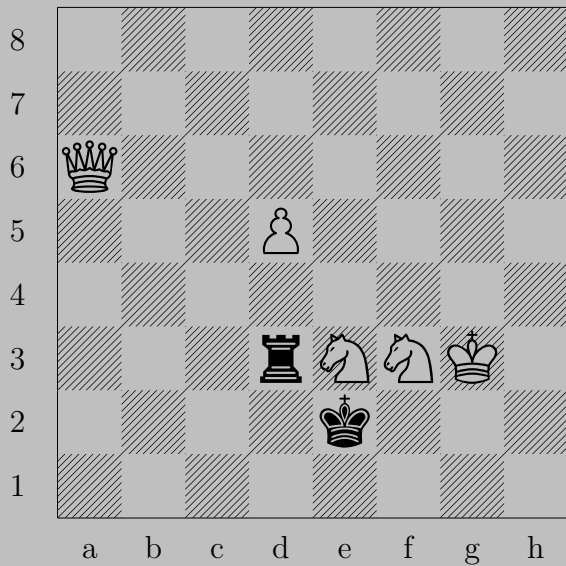


3318



♖h4, ♔f4
♙f3

3319



E. Szentgyörgyi, 1936

3319



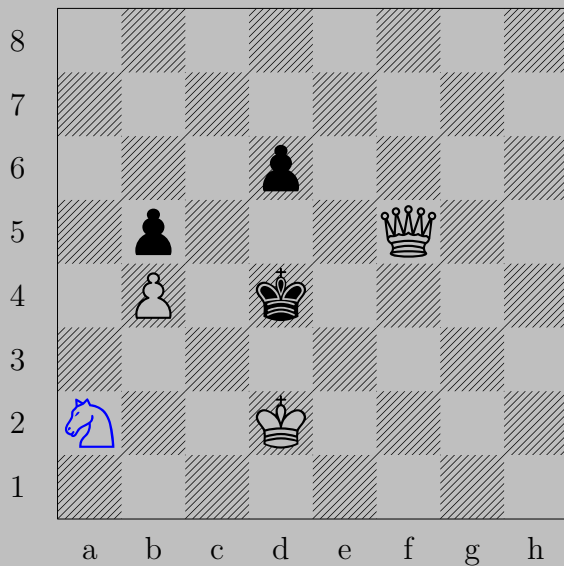
♙b5, ♚xg3
♙e8

3320



E. Szentgyörgyi, 1936

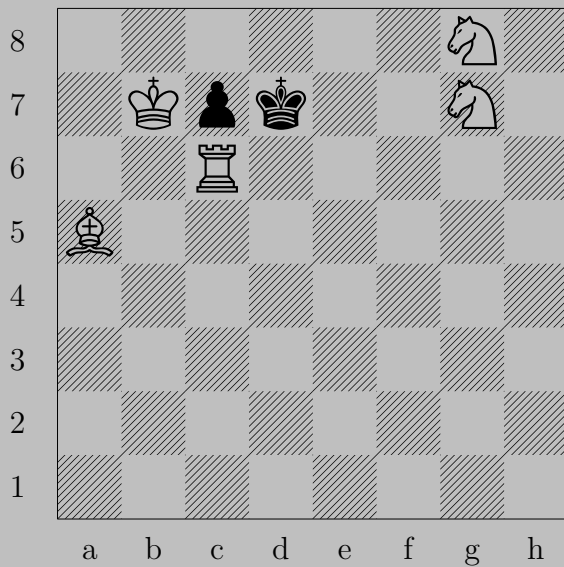
3320



♞a2

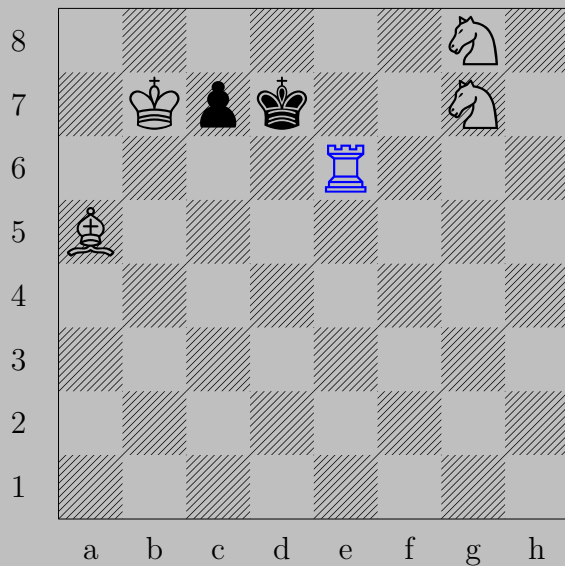
If ♙d5 , ♚f4 . If ♚c4 , ♚d3 .

3321



E. Szentgyörgyi, 1936

3321



$\text{R}e6$

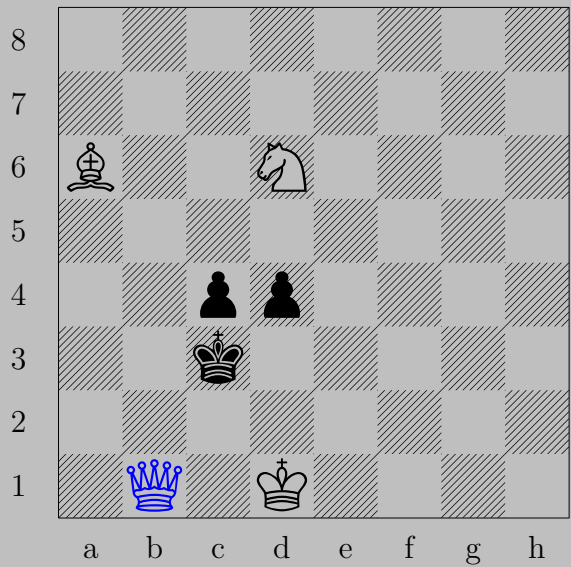
If $\text{K}d8$, $\text{R}d6$. If $\text{B}c6$ or $\text{B}c5$, $\text{N}f6$.

3322



E. Szentgyörgyi, 1936

3322



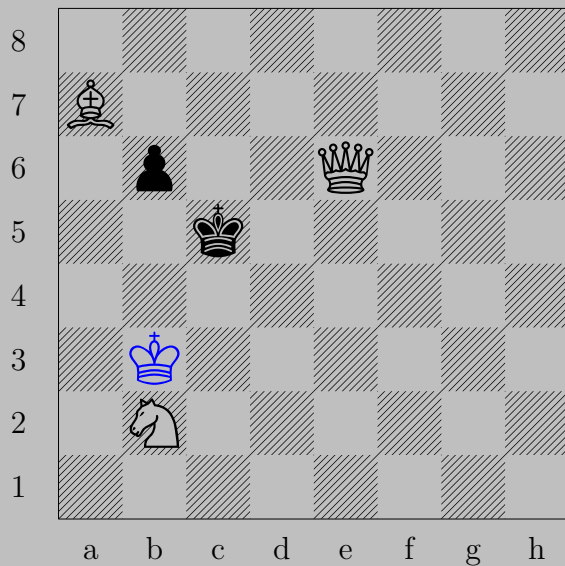
♔b1, ♕d3
♞b5

3323



E. Szentgyörgyi, 1936

3323



♔b3

If ♔b5, ♚×b6. If ♔d4, ♙×b6.

3324



E. Szentgyörgyi, 1936

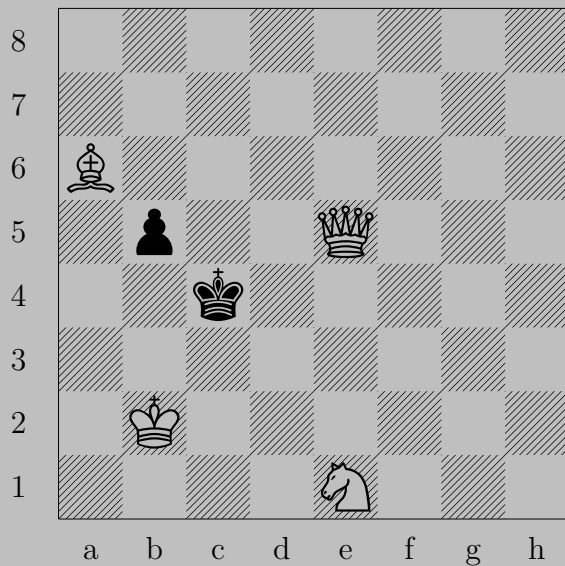
3324



♞c2

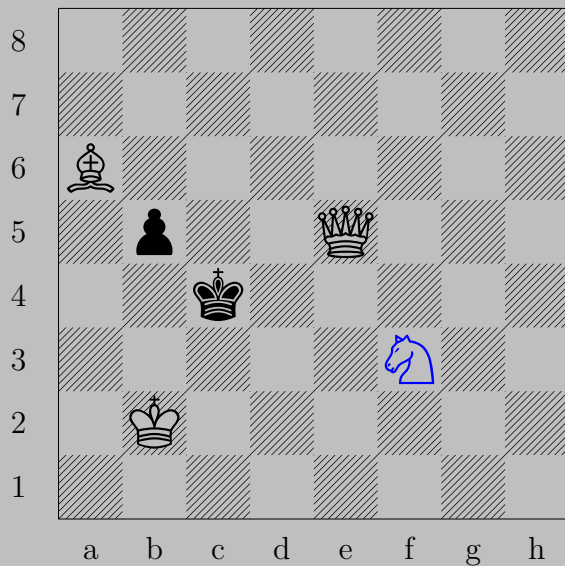
If ♚e5, ♔e6. If ♚c4, ♔c6.

3325



E. Szentgyörgyi, 1936

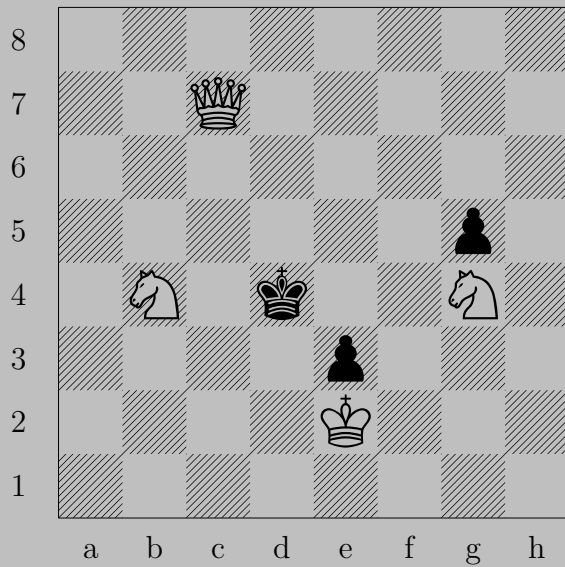
3325



♞f3

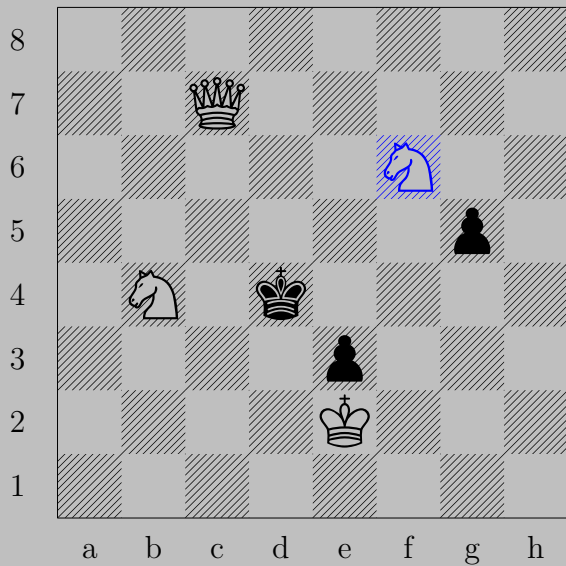
If ♙b4, ♚×b5. If ♚d3, ♜×b5.



3326



E. Szentgyörgyi, 1936

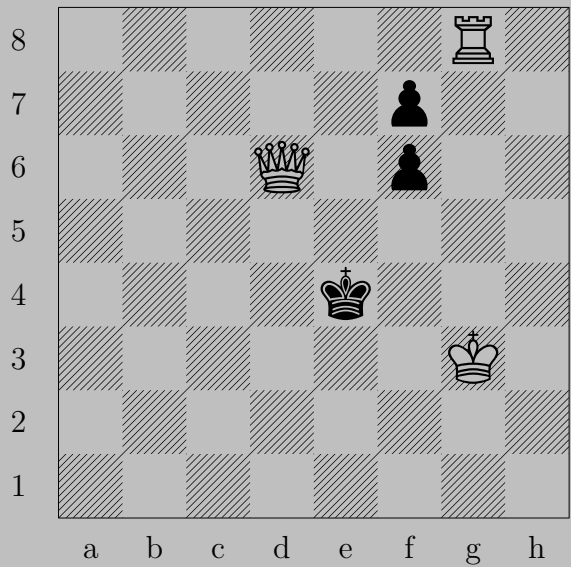
3326



f6, g4

c2

3327



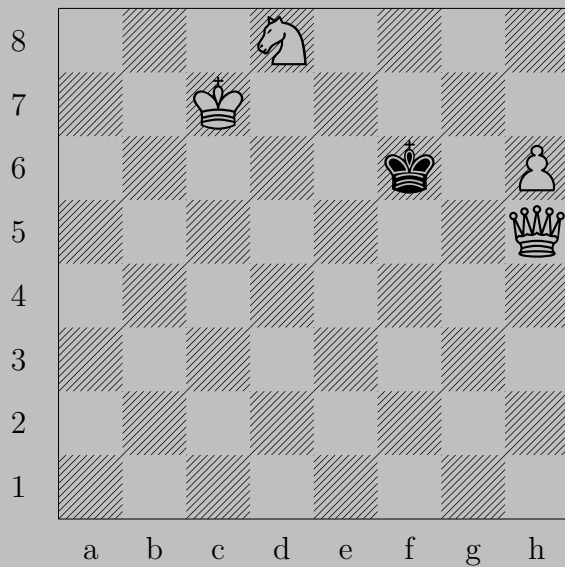
E. Szentgyörgyi, 1933

3327



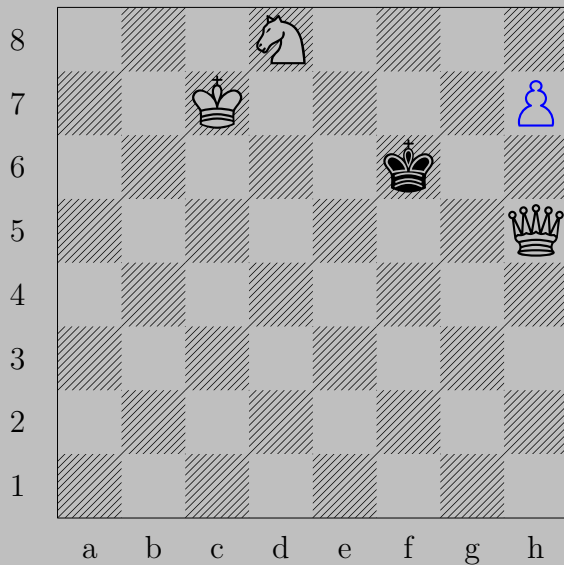
♙d7, ♙e3 or ♙e5 or ♘f5
♖e8

3328



E. Szentgyörgyi, 1927

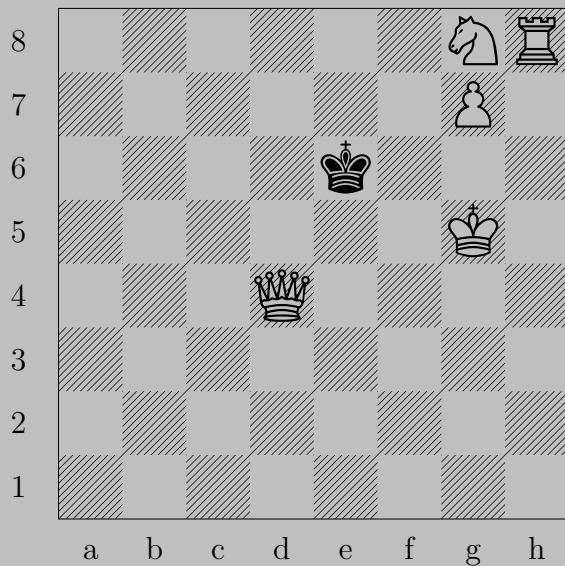
3328



\triangleleft h7

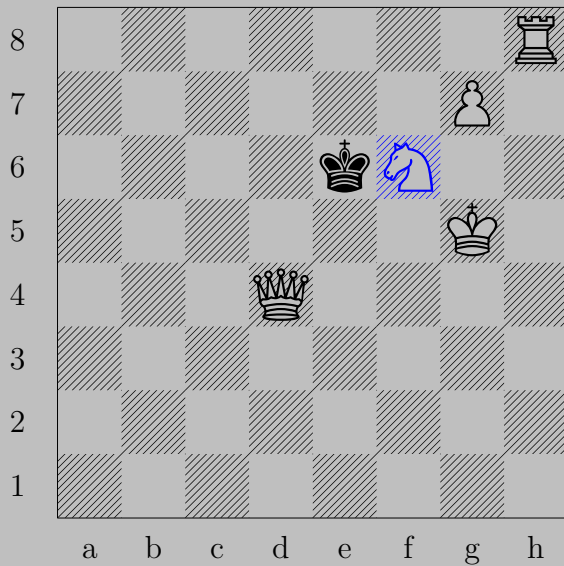
If \triangleleft e7, \triangleleft f7. If \triangleleft g7, \triangleleft h8(\triangleleft).

3329



E. Szentgyörgyi, 1927

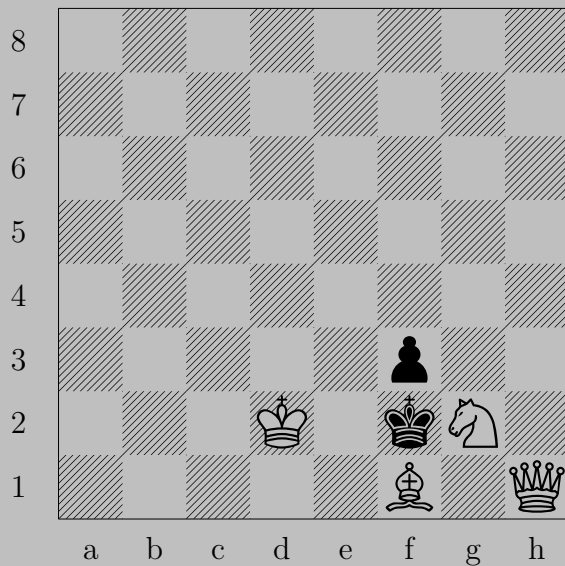
3329



♞f6, ♔e7 or ♔f7

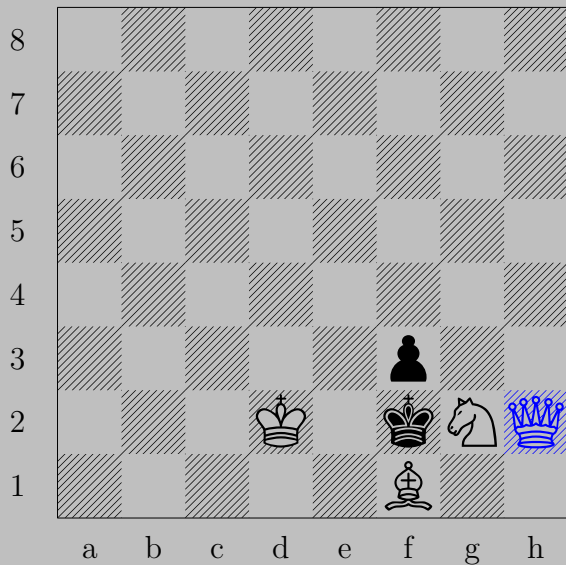
♚d7

3330



E. Szentgyörgyi, 1927

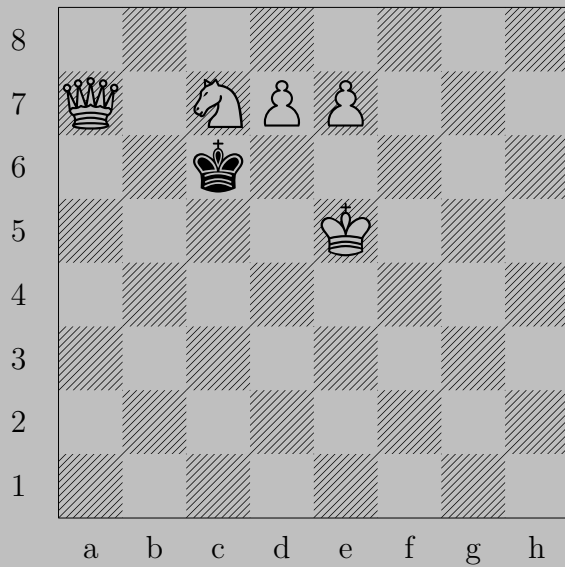
3330



♔h2

If ♔xf1, ♞e3. If ♖xg2, ♔xg2.

3331



E. Szentgyörgyi, 1927

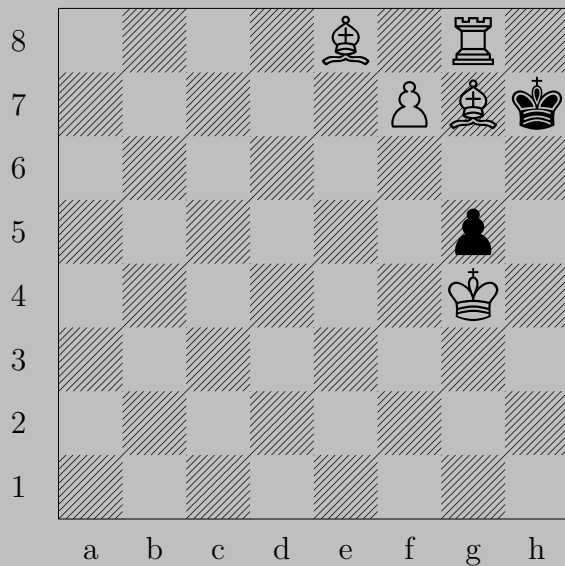
3331



♔b8

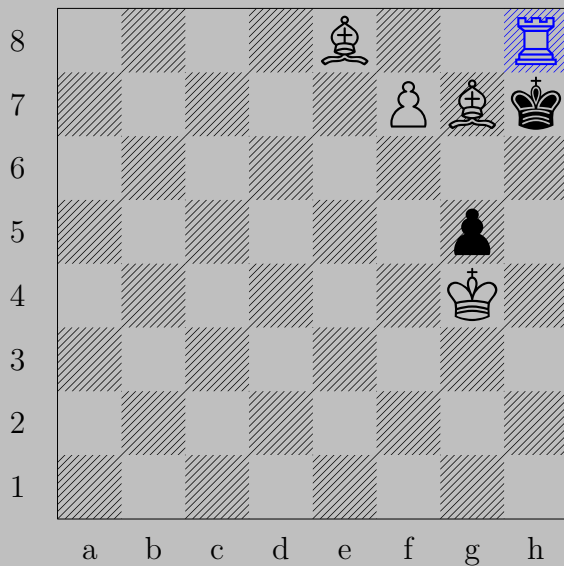
If ♙×d7, ♕e8(♔). If ♔c5, ♔b5.

3332



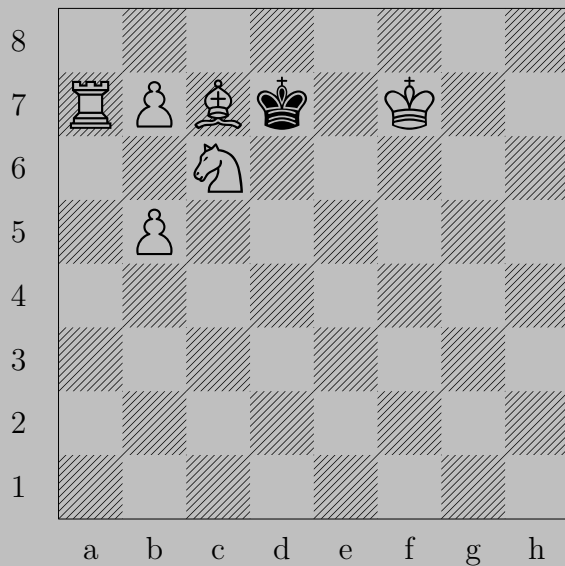
E. Szentgyörgyi, 1927

3332



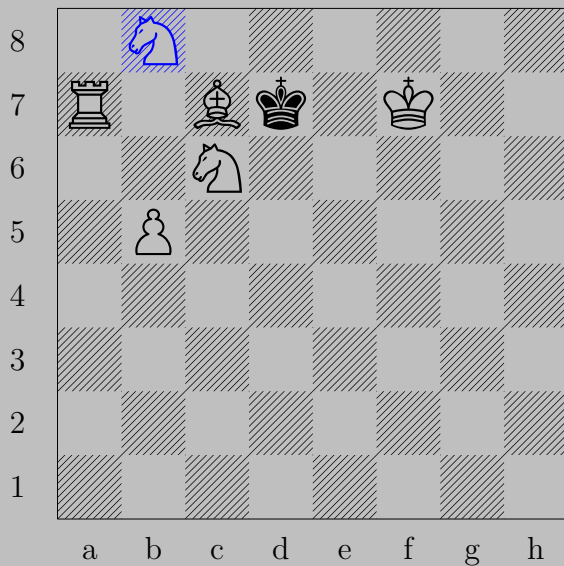
♖h8+ , ♔xg7 or ♔g6
 ♗f8 (♔)

3333



E. Szentgyörgyi, 1927

3333



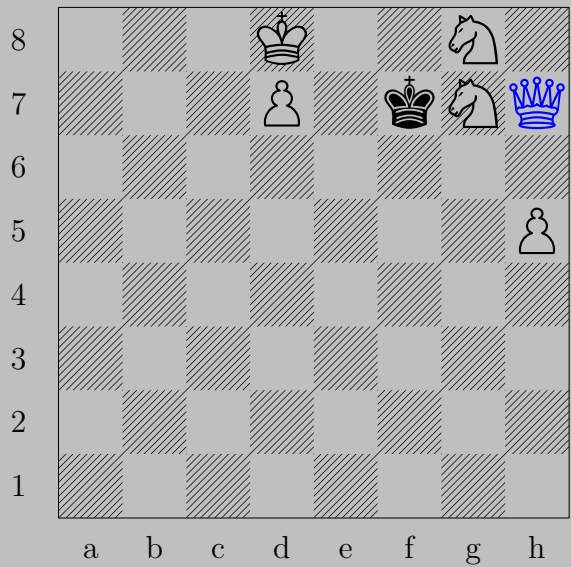
$\text{♖b8}(\text{♞})+, \text{♔c8}$
 ♞e7

3334



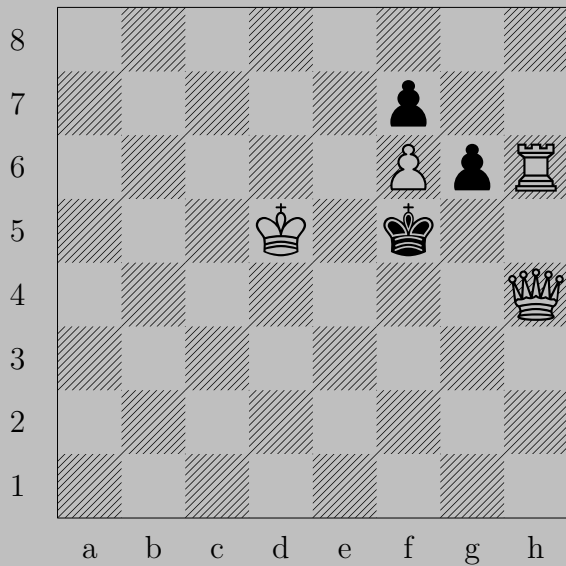
E. Szentgyörgyi, 1927

3334



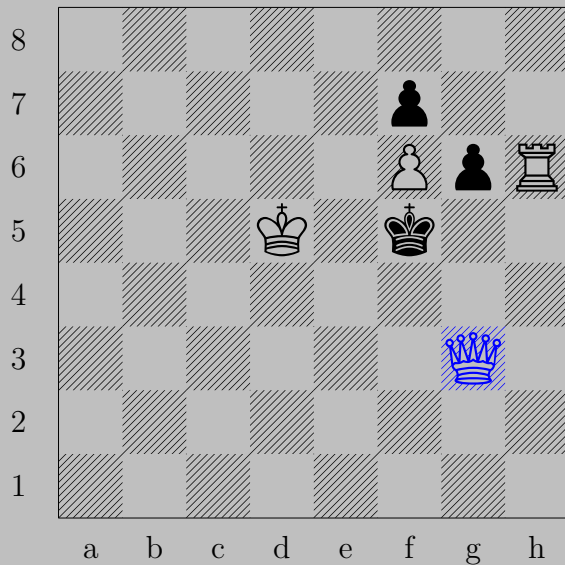
♚h7, ♔f8
♞e6

3335



E. Szentgyörgyi, 1927

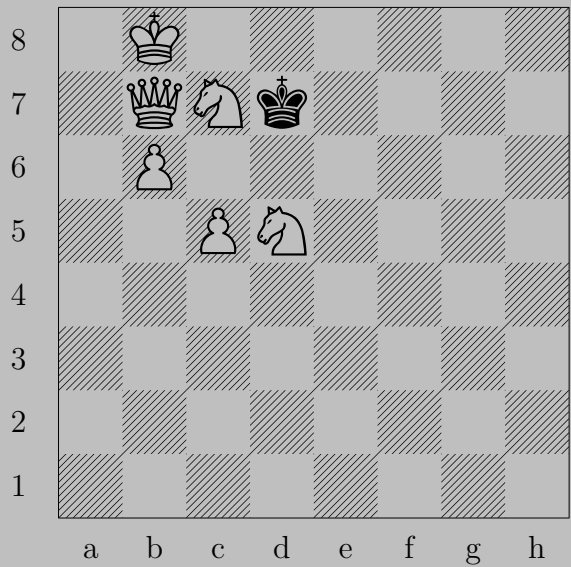
3335



♔g3

If ♙xf6 , ♚e5 . If ♗g5 , ♚f3 .

3336



E. Szentgyörgyi, 1927

3336



♙a6

If ♔c6, ♙b5. If ♔d8, ♙c8.

3337



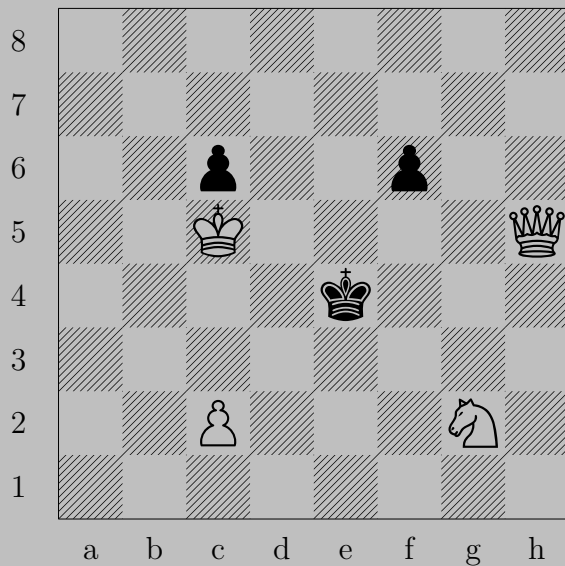
E. Szentgyörgyi, 1928

3337



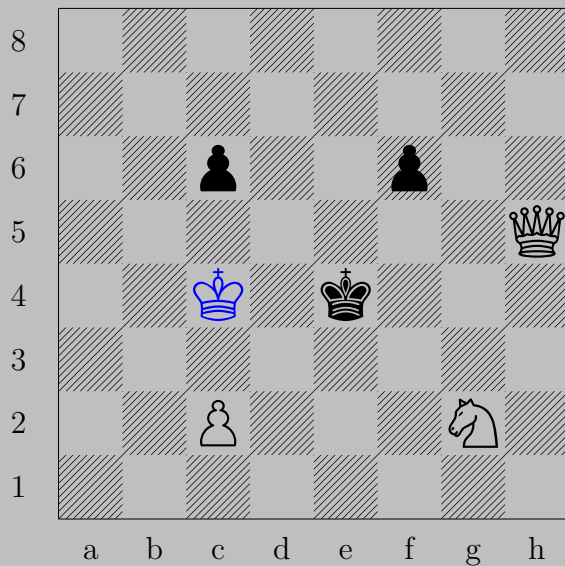
♖c5, ♗c6
♖d6

3338



E. Szentgyörgyi, 1928

3338



♔c4

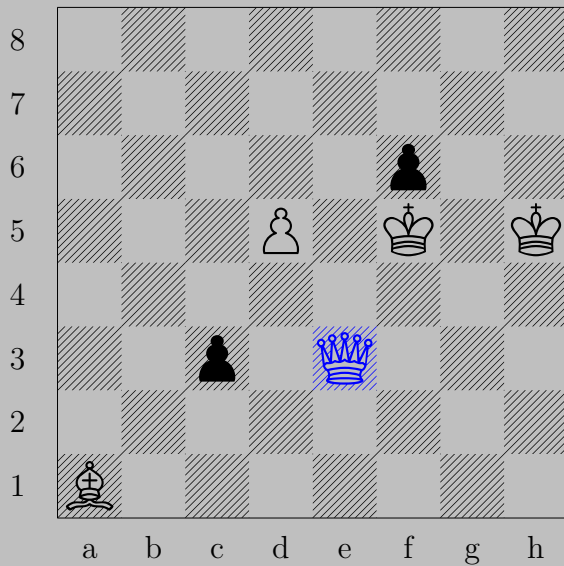
If ♖c5, ♕d5. If ♖f5, ♕e2.

3339



E. Szentgyörgyi, 1928

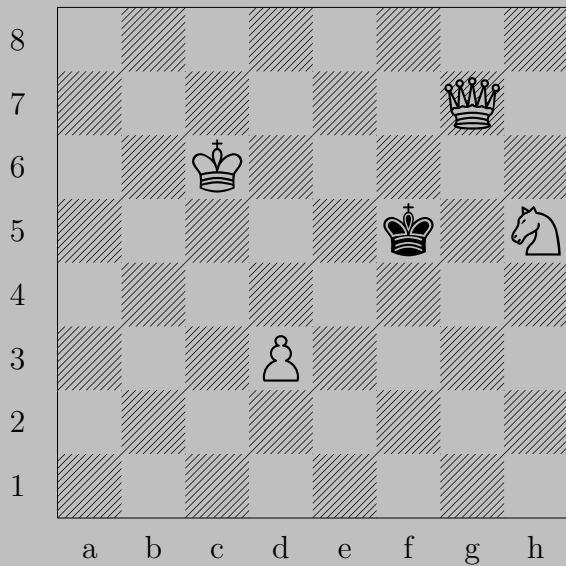
3339



♔e3, ♖c2

♔f3

3340



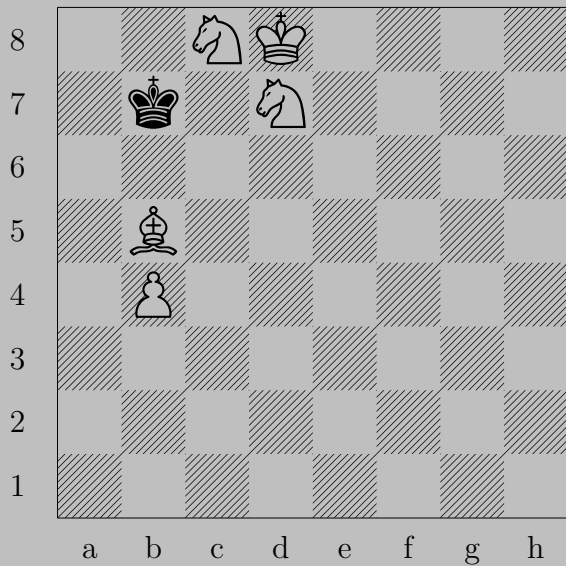
E. Szentgyörgyi, 1928

3340



♔g8, ♔e5
♕d3

3341



E. Szentgyörgyi, 1928

3341



♖a4

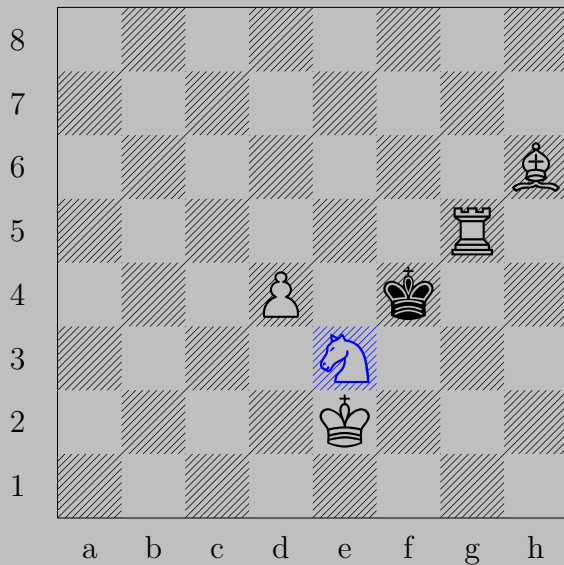
If ♔a8, ♖c6. If ♔a6, ♘c5.

3342



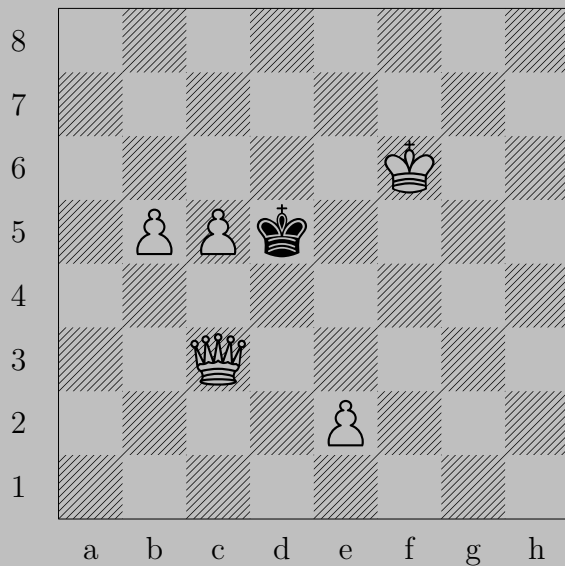
E. Szentgyörgyi, 1928

3342



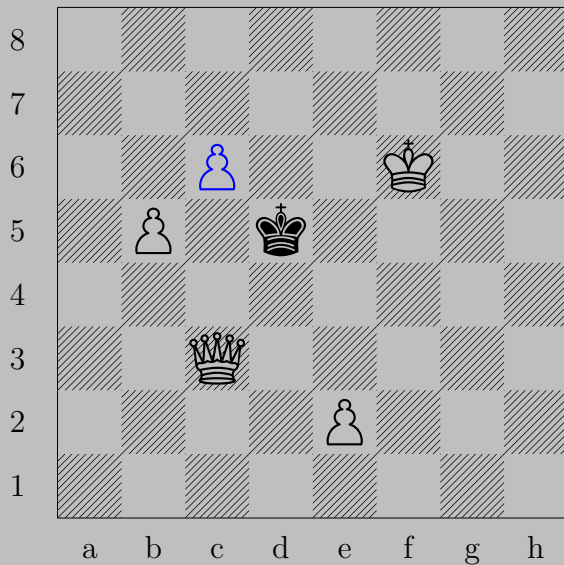
$\text{♞e3}, \text{♔e4}$
 ♖g4

3343



E. Szentgyörgyi, 1928

3343



♖c6, ♔d6 or ♕e4

♚e5

3344



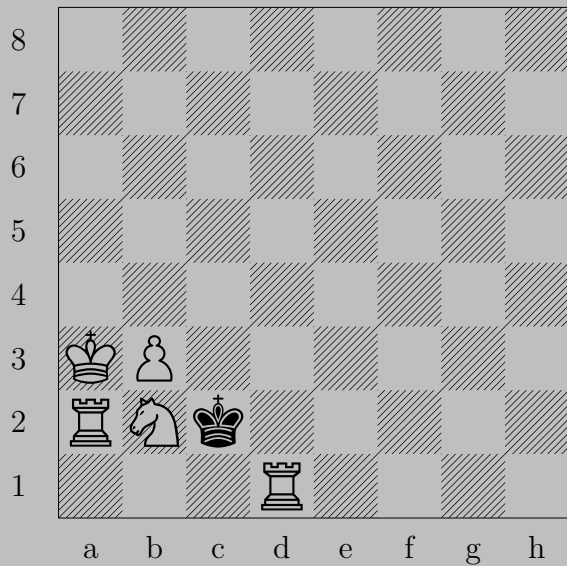
E. Szentgyörgyi, 1928

3344



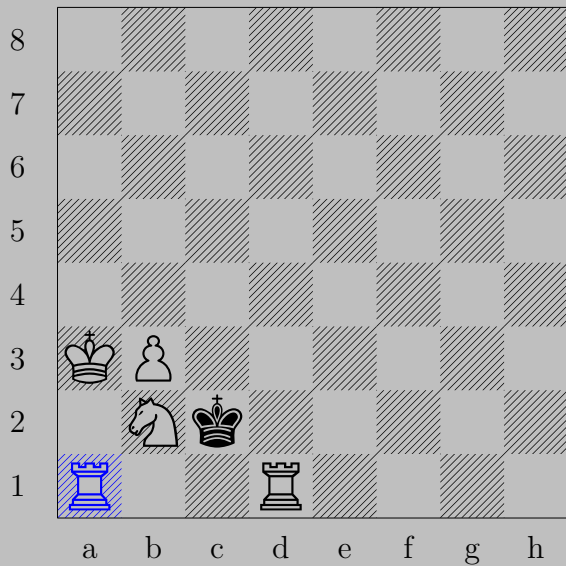
♔d5, ♙e4
♙d4

3345



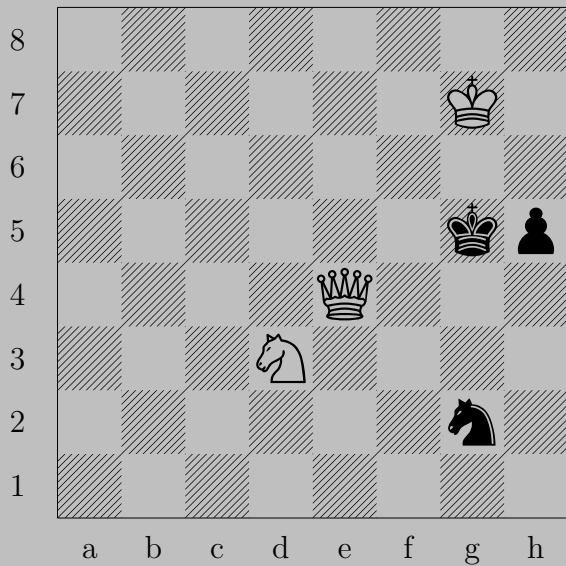
E. Szentgyörgyi, 1928

3345



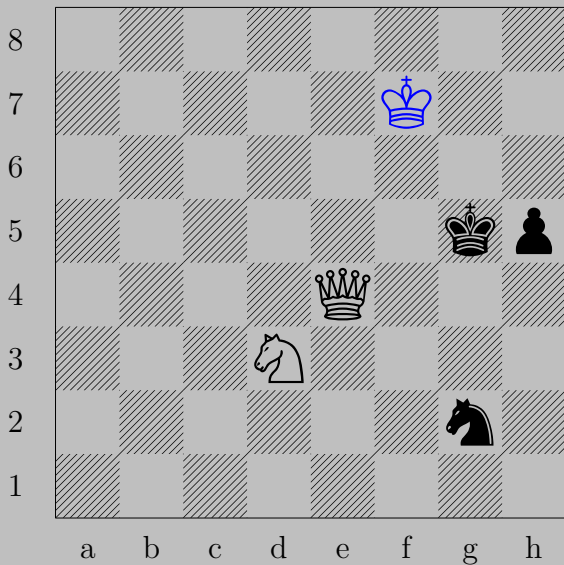
♖a1, ♔c3
♜c1

3347



E. Szentgyörgyi, 1928

3347

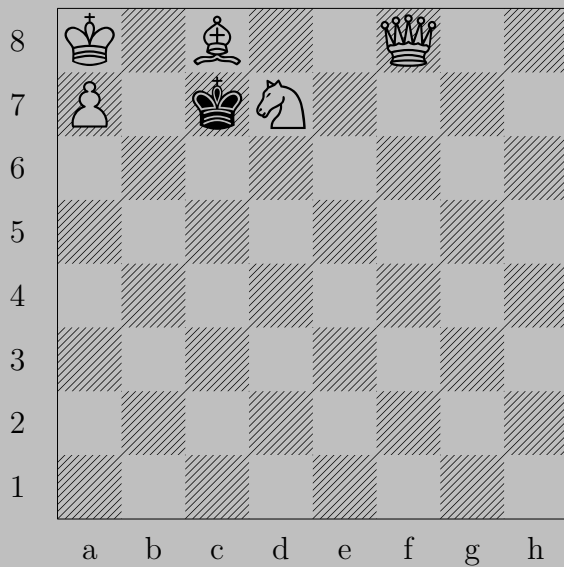


♔f7

If ♔h6 or ♖h4, ♕g6.

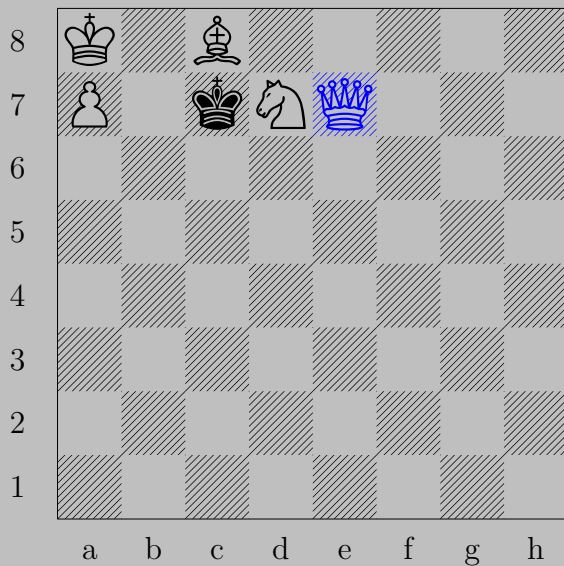
If ♘f4, ♕×f4. Otherwise, ♕f4.

3348



E. Szentgyörgyi, 1928

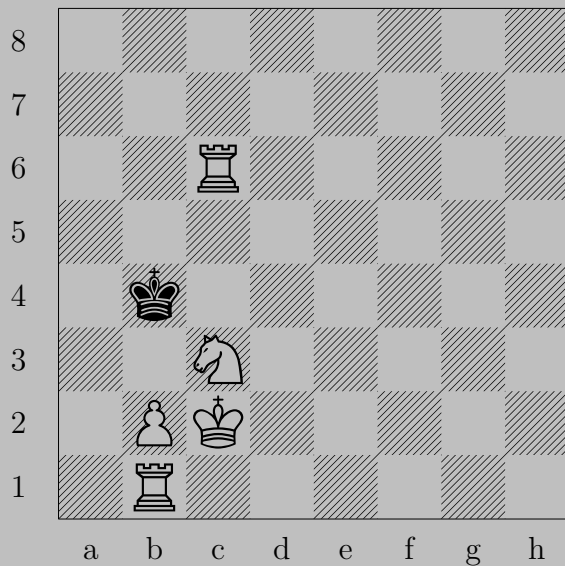
3348



♔e7

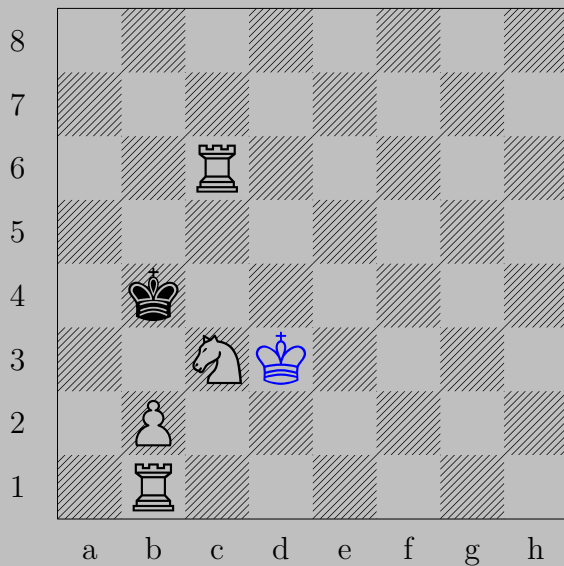
If ♕xc8, ♞b6. If ♕c6, ♕c5.

3349



E. Szentgyörgyi, 1928

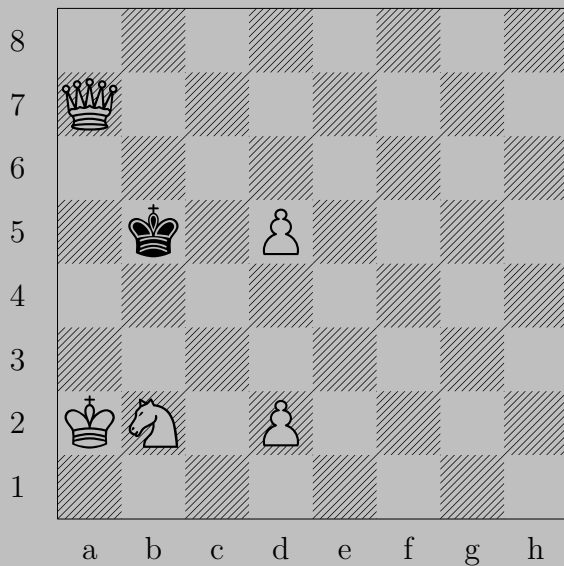
3349



♔d3

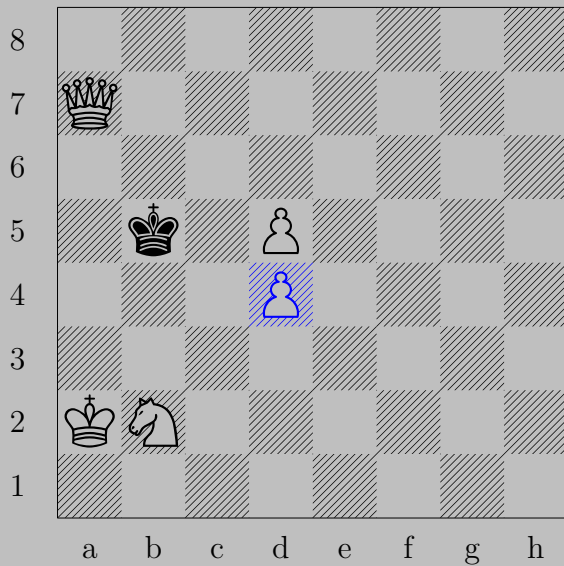
If ♖b3, ♖b6. If ♔a5, ♘b4.

3350



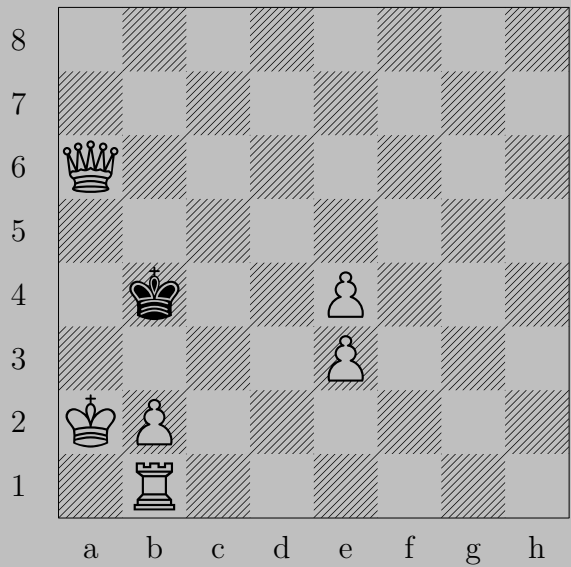
E. Szentgyörgyi, 1928

3350



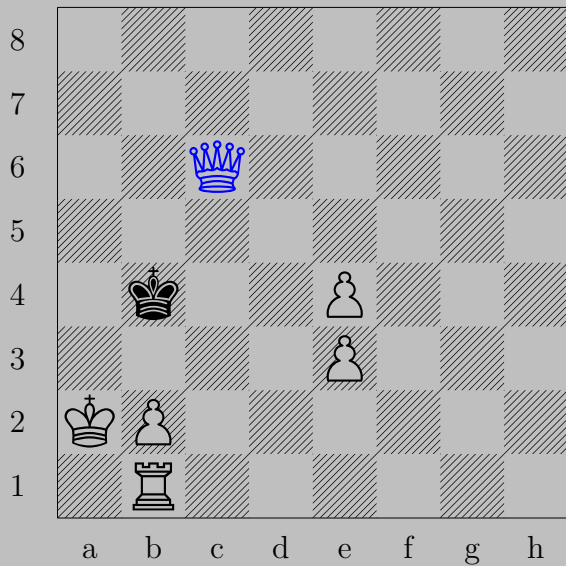
♙d4, ♔b4
♚c5

3351



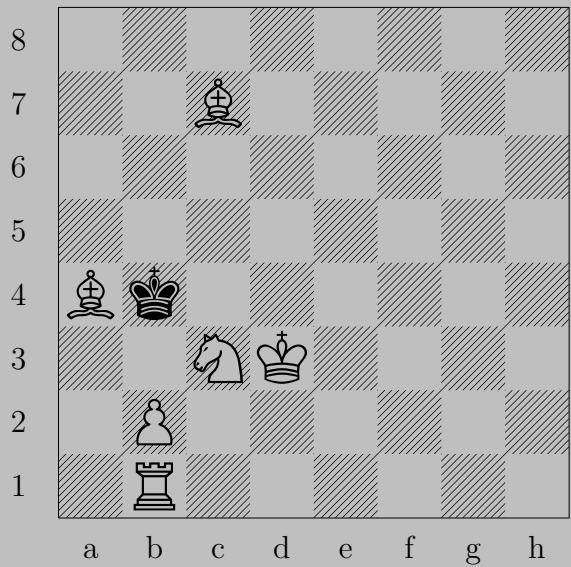
E. Szentgyörgyi, 1928

3351



♙c6, ♚a5
♟b4

3352



E. Szentgyörgyi, 1928

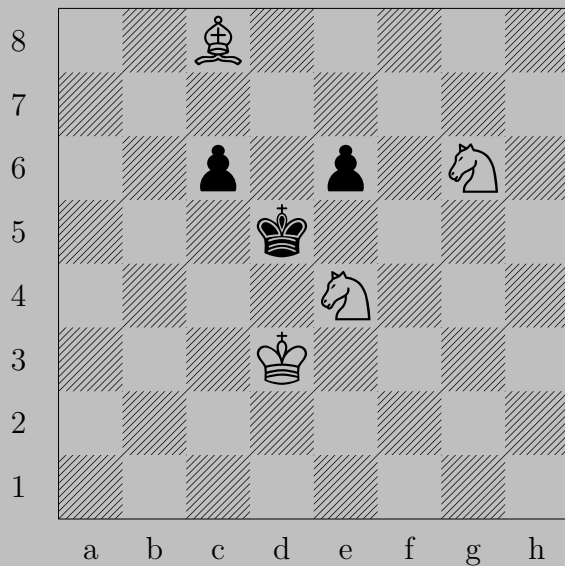
3352



♙b3

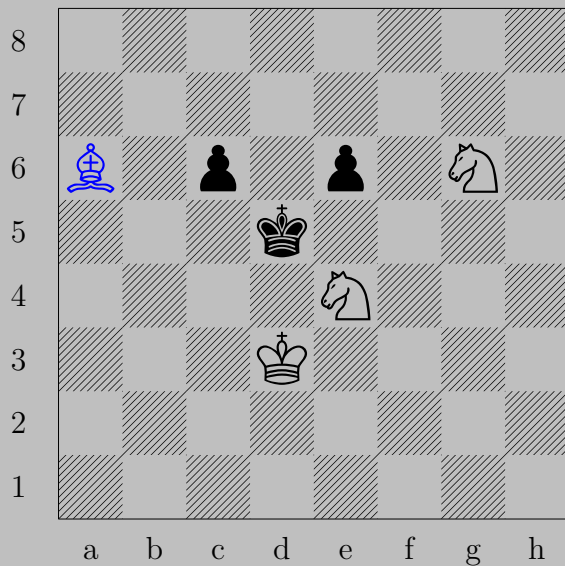
If ♙a3, ♘d6. If ♙c5, ♙b4.

3353



E. Szentgyörgyi, 1928

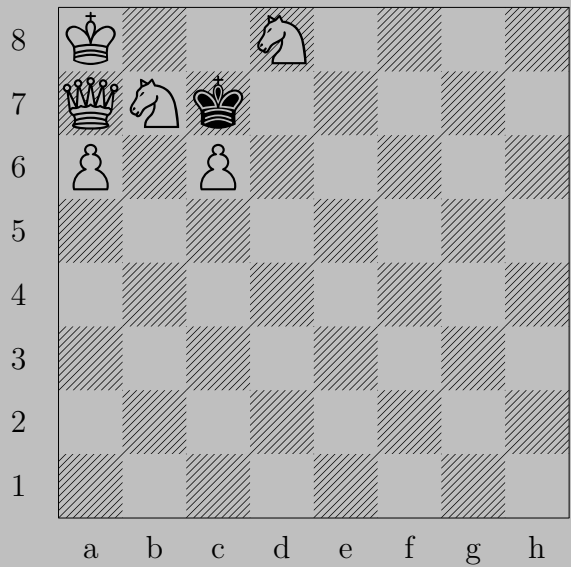
3353



♙a6

If ♜c5, ♙b7. If ♜e5, ♙c4.

3354



E. Szentgyörgyi, 1928

3354



♔d4, ♔c8
♔d7

3355



E. Szentgyörgyi, 1928

3355

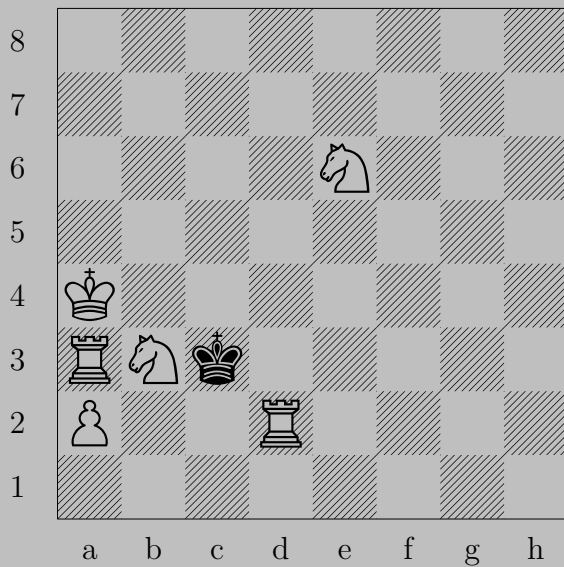


♚e7

If ♞h5, ♚g5.

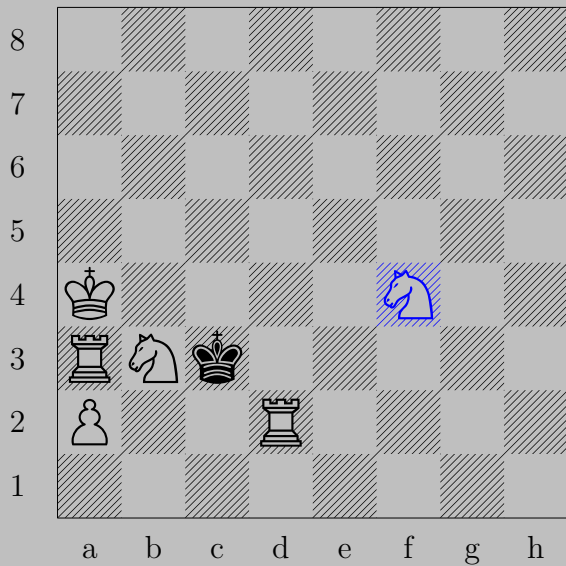
If ♞d6, ♚xd6. Otherwise, ♚d6.

3356



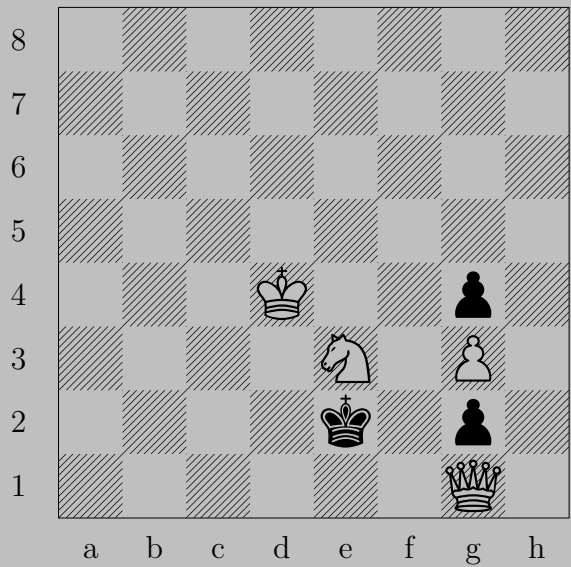
E. Szentgyörgyi, 1928

3356



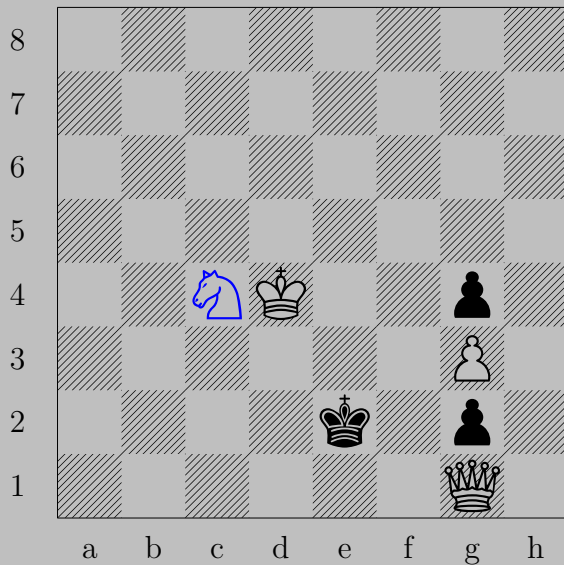
♞f4, ♔c4
 ♖c2

3357



E. Szentgyörgyi, 1928

3357



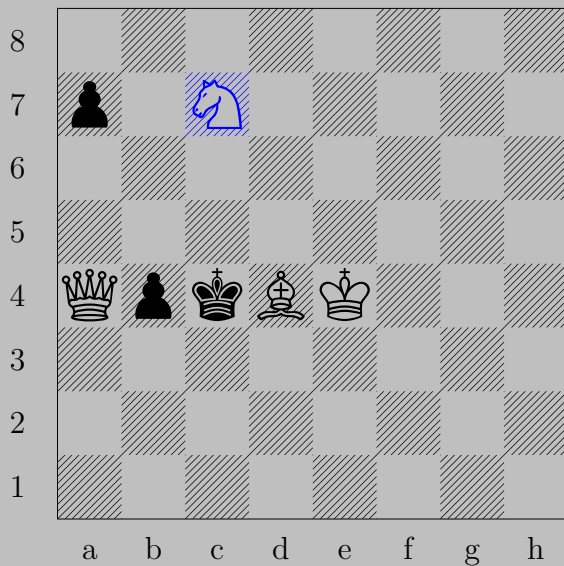
c4, f3
e3

3358



E. Szentgyörgyi, 1928

3358



♞c7 , ♙a6 or ♙a5

♚c2

3359



E. Szentgyörgyi, 1928

3359



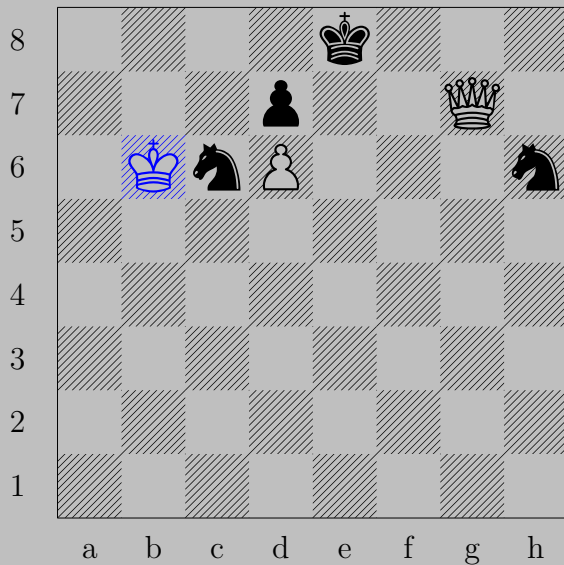
♔c5

If ♖xd6, ♙xd6. If ♖c6, ♖d7.

3360



E. Szentgyörgyi, 1928

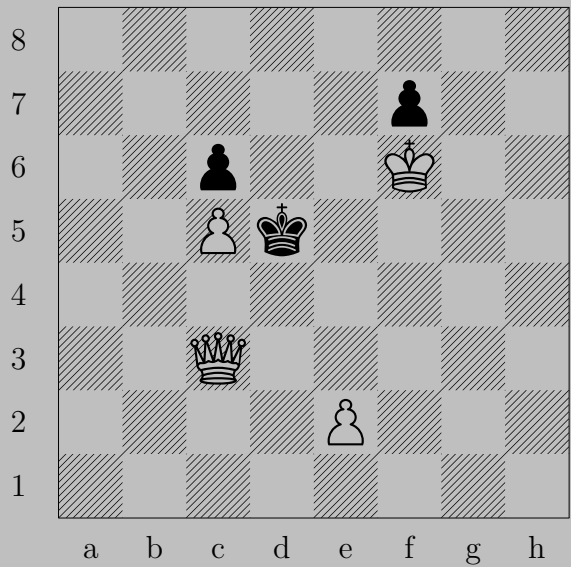


♔b5

If ♔d8, ♕f8. If ♞g8, ♕xg8. If ♞f7 or ♞f5 or ♞g4, ♕g8.

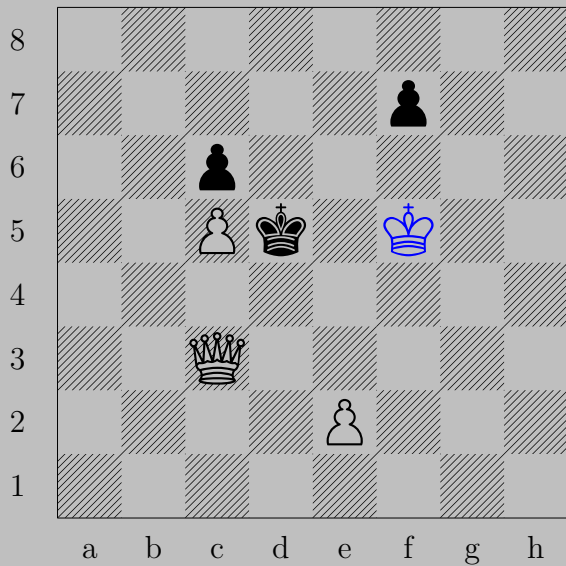
If ♞e7, ♕xe7. Otherwise, ♕e7.

3361



E. Szentgyörgyi, 1928

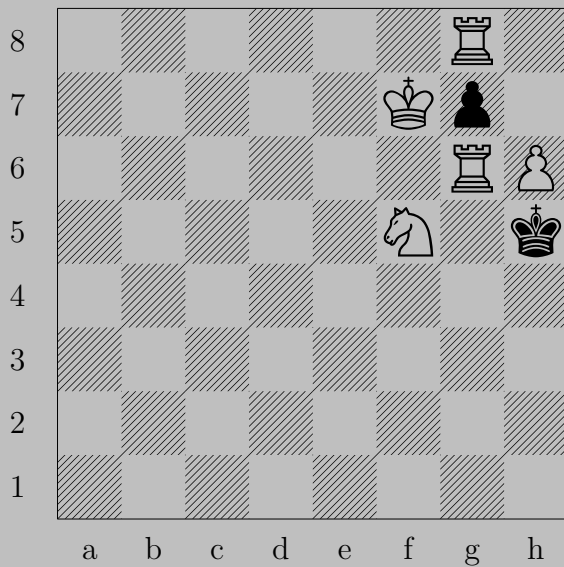
3361



♔f5, ♖f6

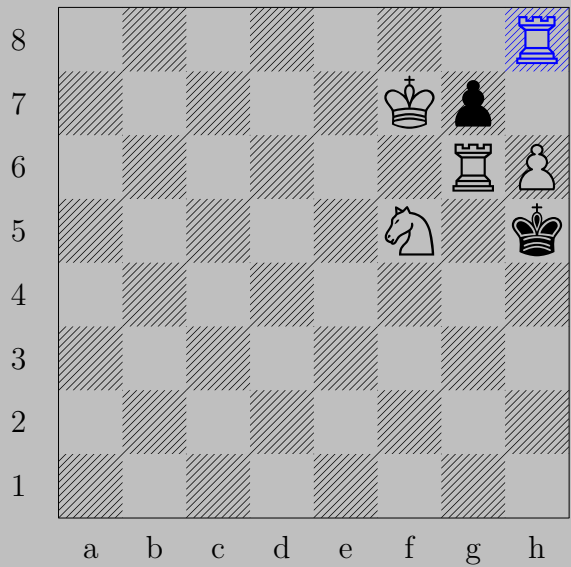
♖e4

3362



E. Szentgyörgyi, 1928

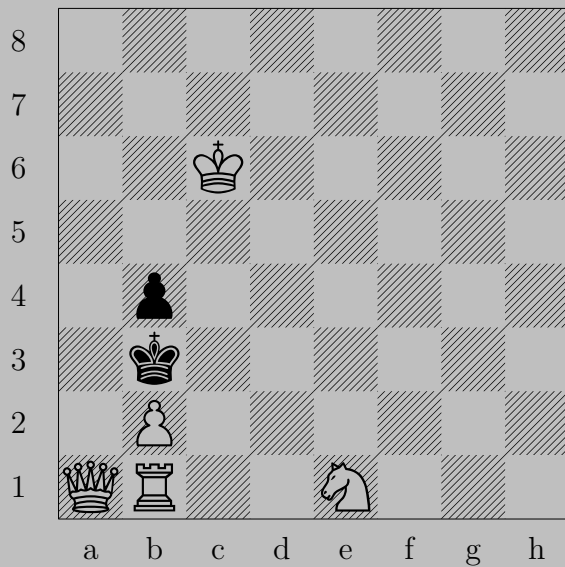
3362



Rh8, Pxh6

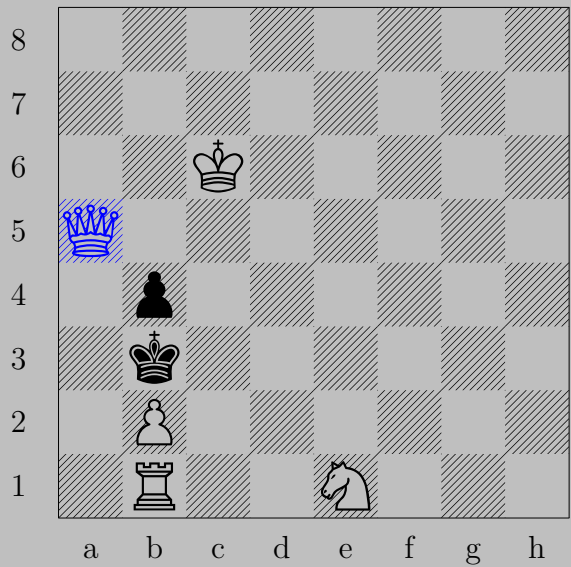
R(h8)xh6.

3363



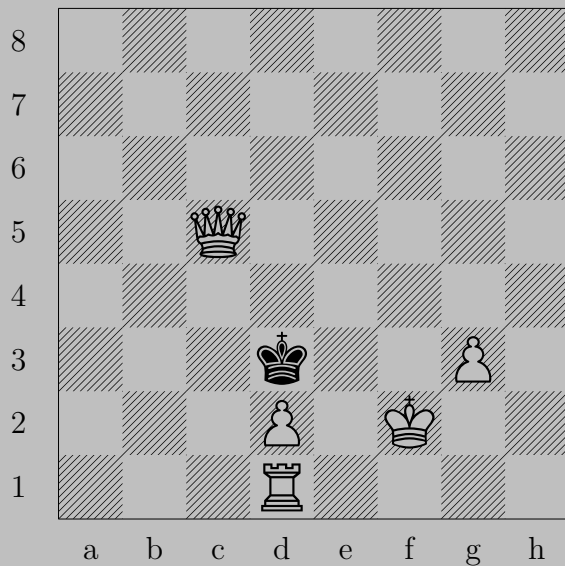
E. Szentgyörgyi, 1928

3363



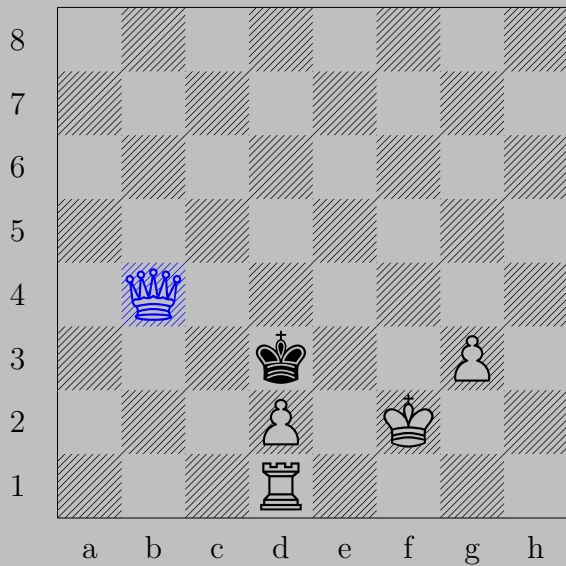
♔a5, ♔c4
♔d5

3364



E. Szentgyörgyi, 1928

3364



♙b4, ♚c2
♙b1

3365



E. Szentgyörgyi, 1925

3365



♔×h4

If ♔e2, ♚d3. If ♔g2, ♚f2.

3366



E. Szentgyörgyi, 1928

3366

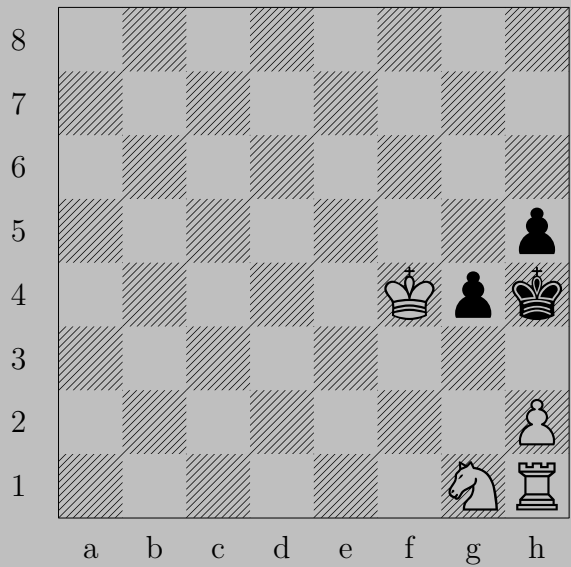


♖a3

If ♜e2, ♖c5.

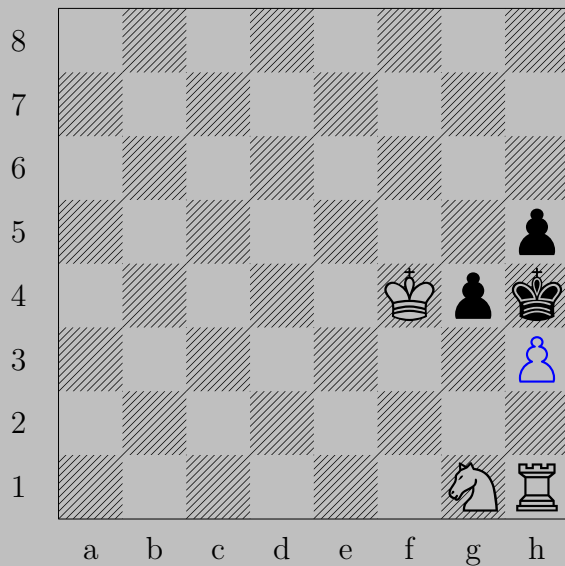
If ♜e2, ♞xe2. Otherwise, ♞e2.

3367



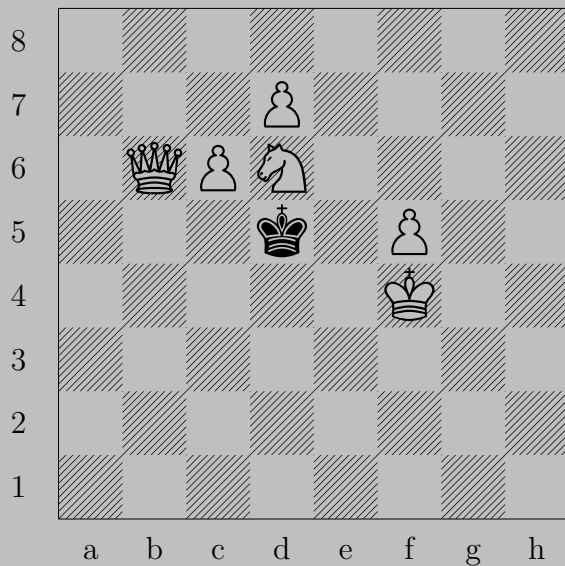
E. Szentgyörgyi, 1928

3367



♔h3

If $\text{♔}\times\text{h3}$, $\text{♖}\times\text{h3}$. If ♔g3 , ♞f3 .



3368



♔b5+

If ♙×d6, ♘d8(♔). If ♙d4, ♔c4.

3369



E. Szentgyörgyi, 1936

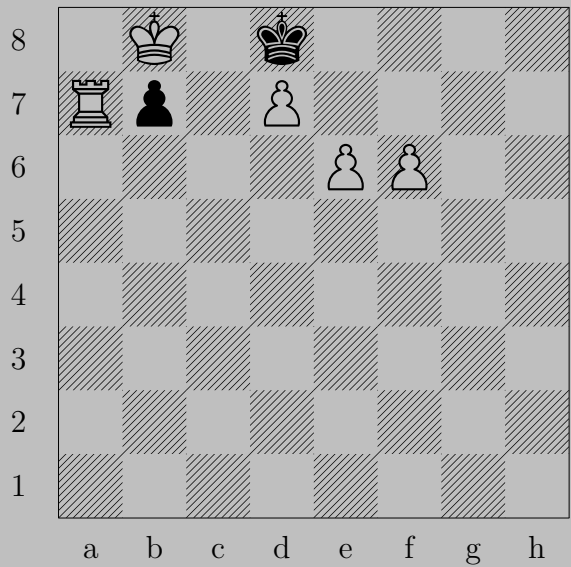
3369



♚a6

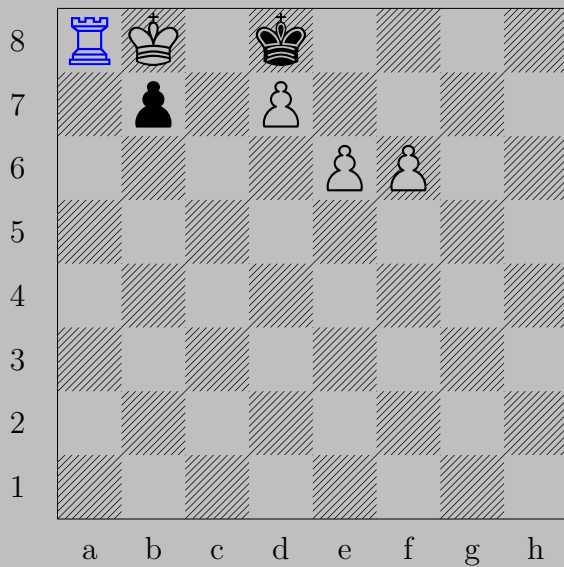
If ♚b8 or ♚c8 or ♙d6, ♞e6. If ♚d6, ♚e5.

3370



L. Talabèr, 1932

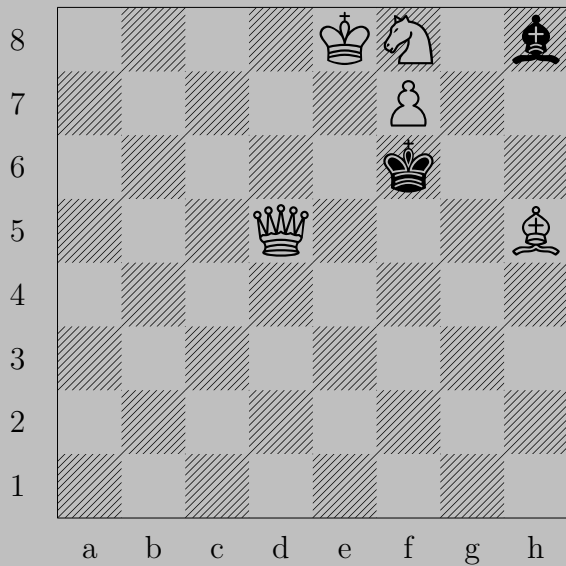
3370



♖ a8, ♙ b6 or ♙ b5

♚ b7

3371



L. Talabèr, 1932

3371



♞g4

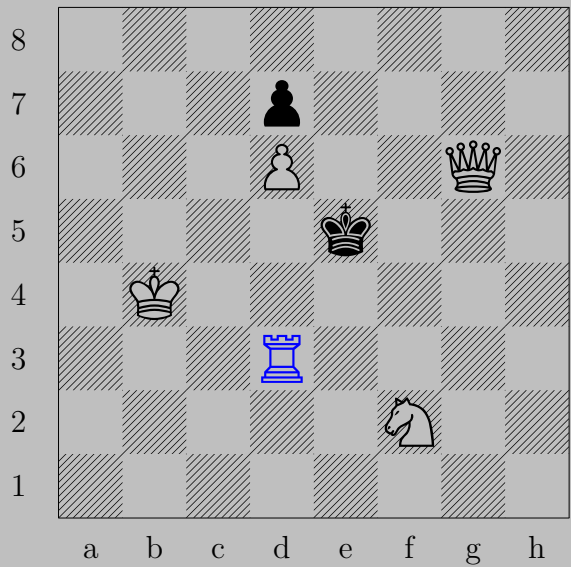
If ♔g7, ♚g5. If ♞g7, ♚f5.

3372



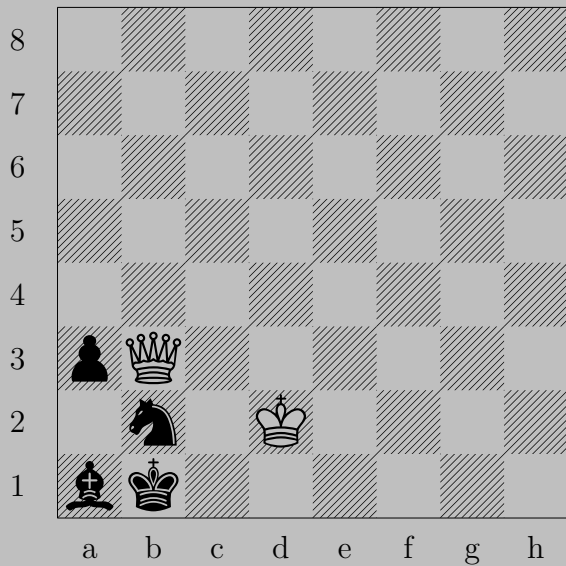
L. Talabèr, 1932

3372



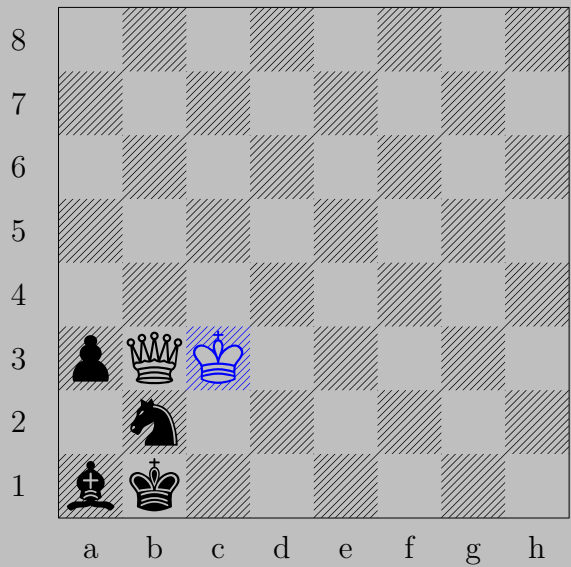
♖d3, ♙f4
♔f6

3373



L. Talabèr, 1932

3373



♔c3, ♖a2 or ♔c1
♕c2

3374



L. Talabèr, 1932

3374



Kc4

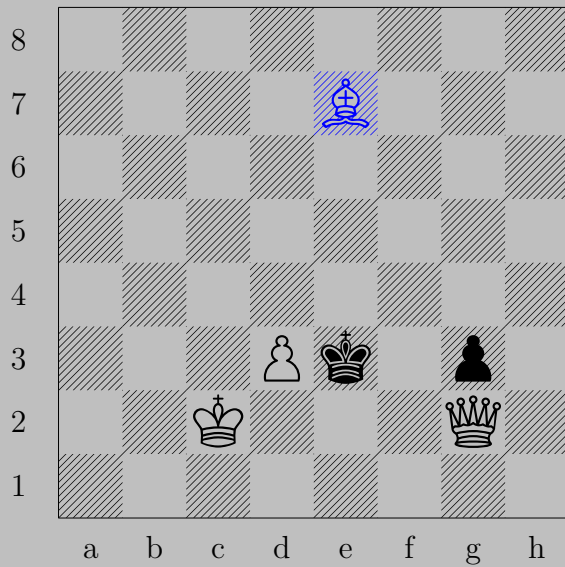
If Bc2 , Kxd4 . If Bd3 , Kxc3 . If Kc2-h7 , Ka2 . If Ka2 , Kxa2 .

3375



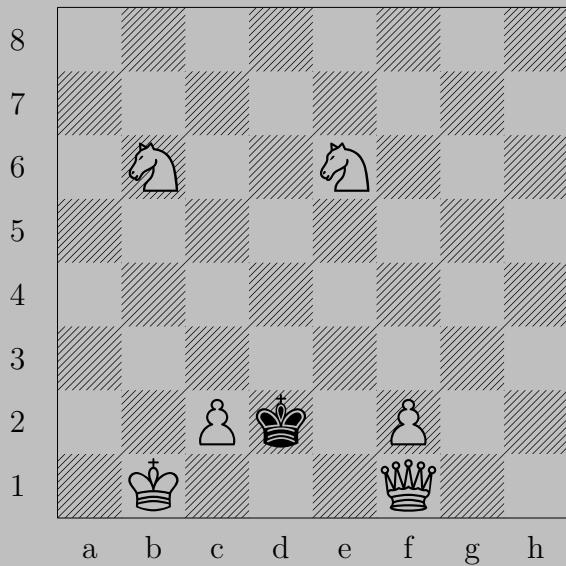
L. Talabèr, 1932

3375



♔e7, ♔d4 or ♔f4
♕e4

3376



L. Talabèr, 1932

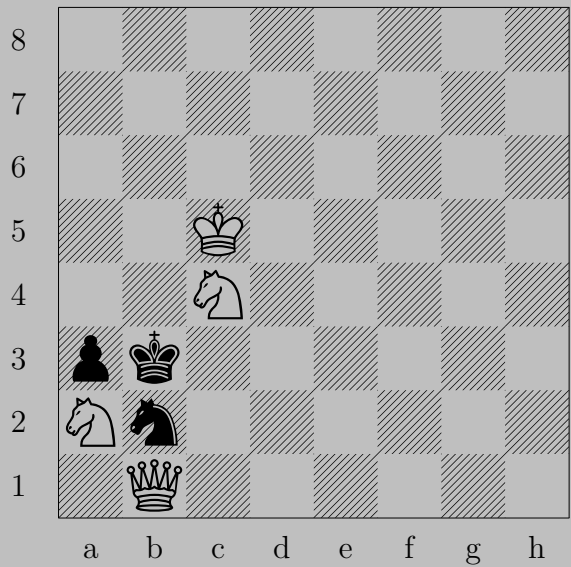
3376



♘f3

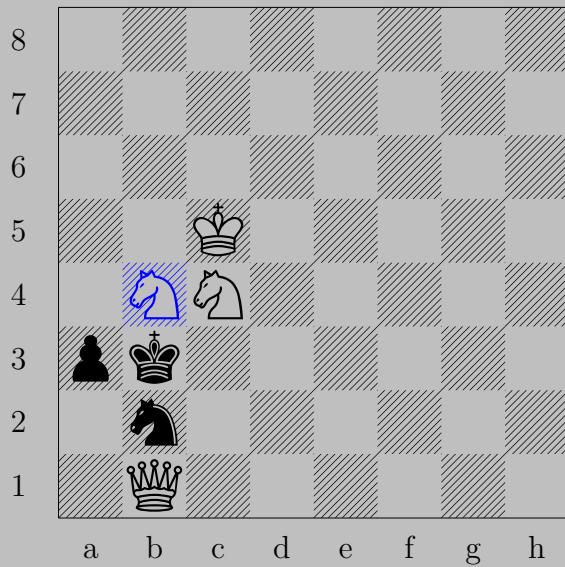
If ♔c3, ♕e1. If ♔e3, ♘c4.

3377



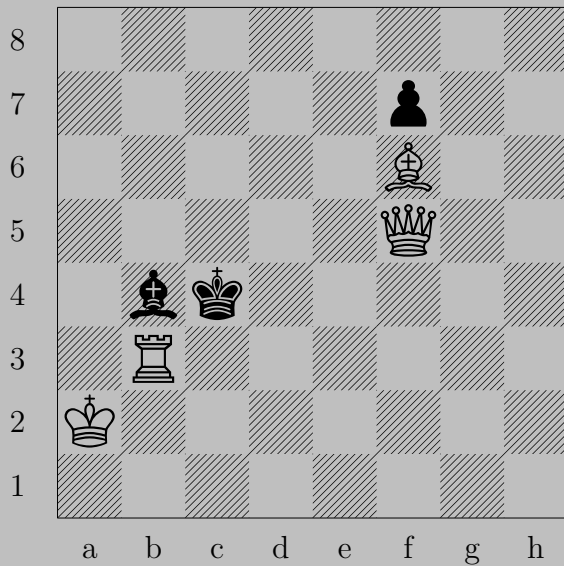
L. Talabèr, 1931

3377



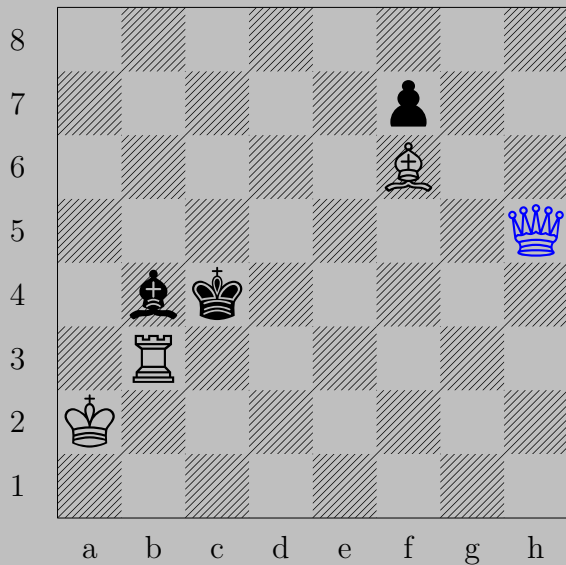
b4, a2 or a4 or c3
c2

3378



L. Talabèr, 1931

3378



♔h5

If ♙c5, ♔e2.

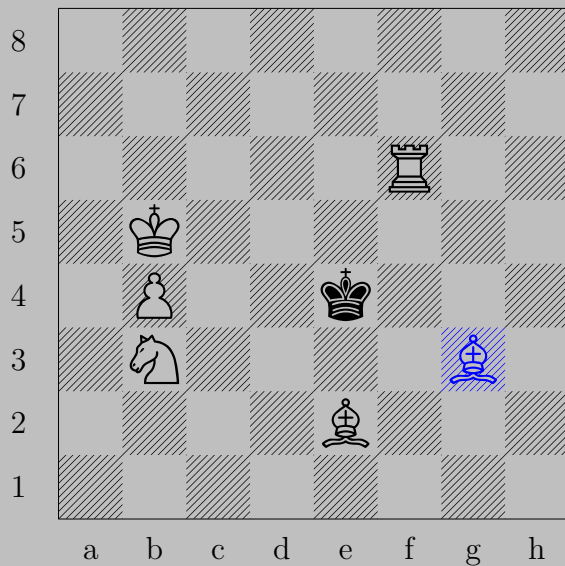
Otherwise, ♔b5.

3379



L. Talabèr, 1931

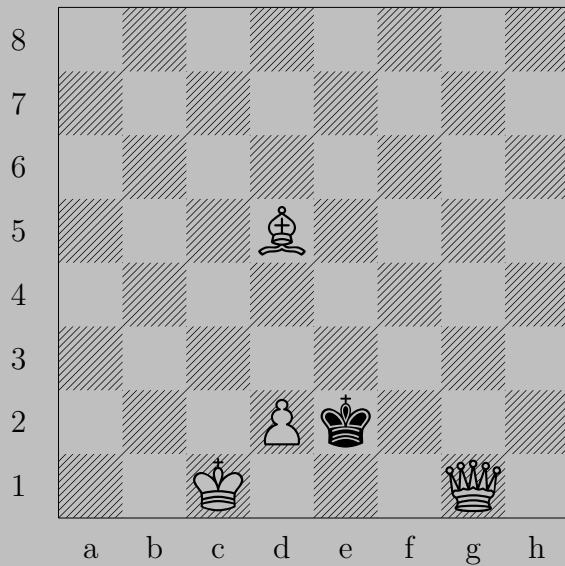
3379



♘g3

If ♔d5, ♘f3. If ♔e3, ♖e6.

3380



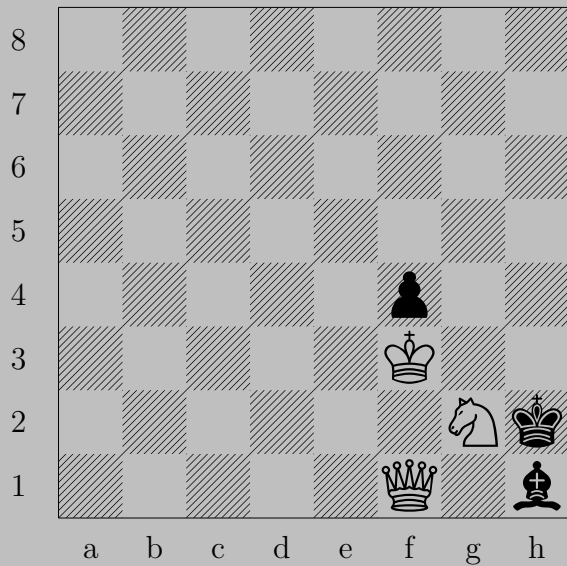
L. Talabèr, 1931

3380



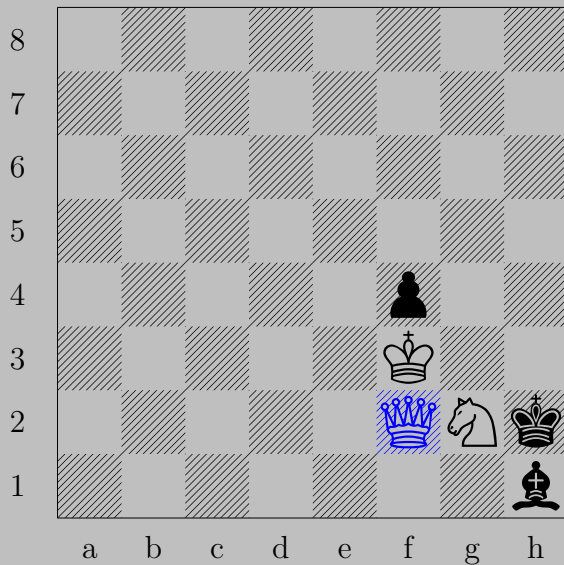
♔g3, ♔f1
♗c4

3381



L. Talabèr, 1931

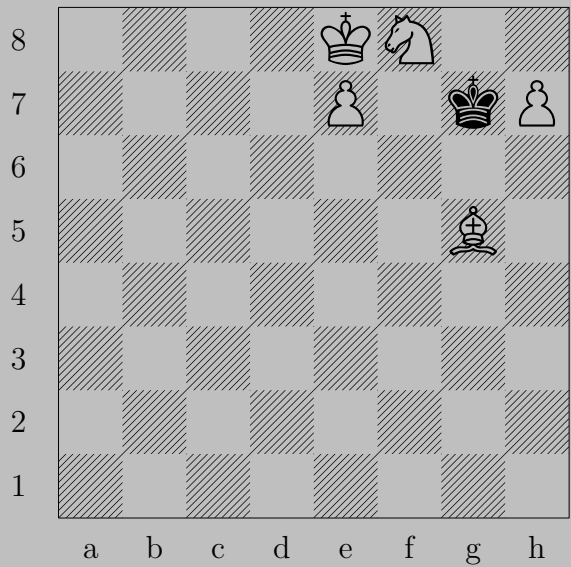
3382



♔f2

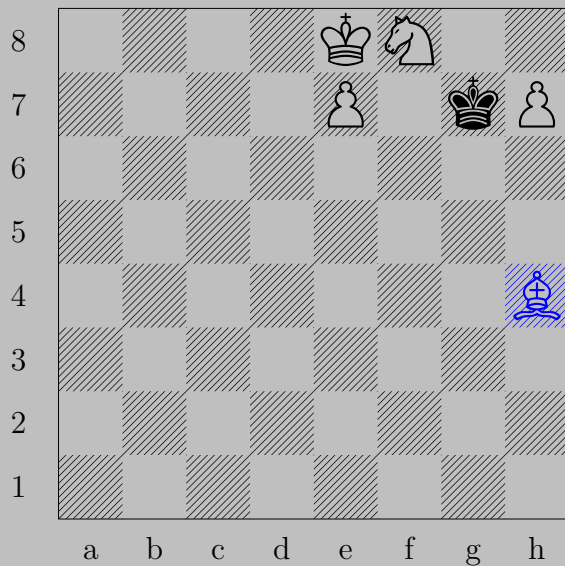
If ♘xg2, ♔xg2. If ♔h3, ♔h4.

3382



L. Talabèr, 1931

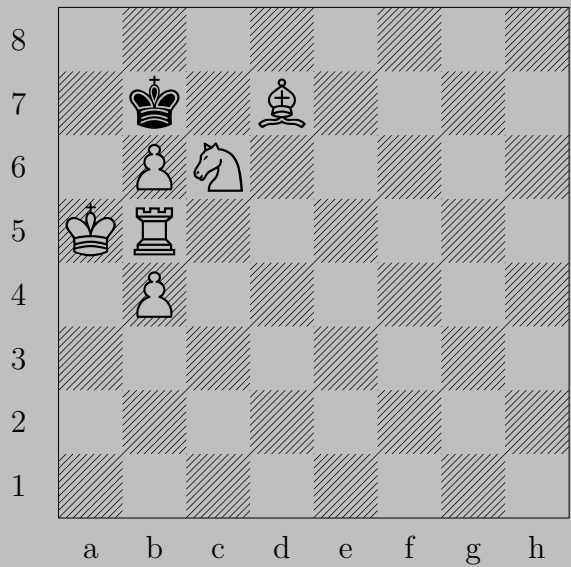
3382



♘h4

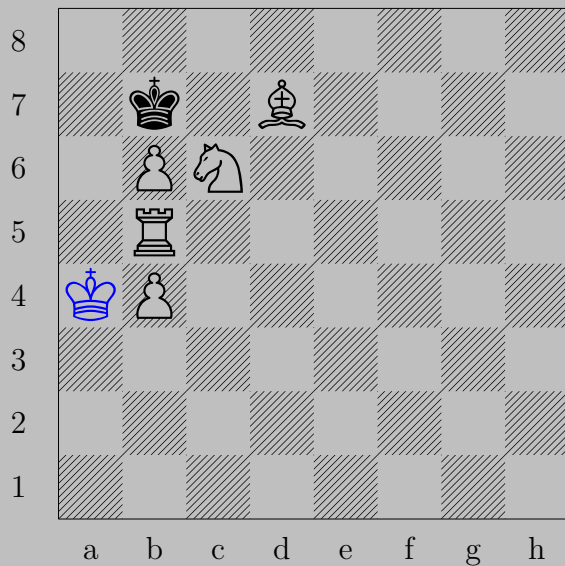
If ♔h8, ♘f6. If ♔h6, ♖h8(♔).

3383



L. Talabèr, 1931

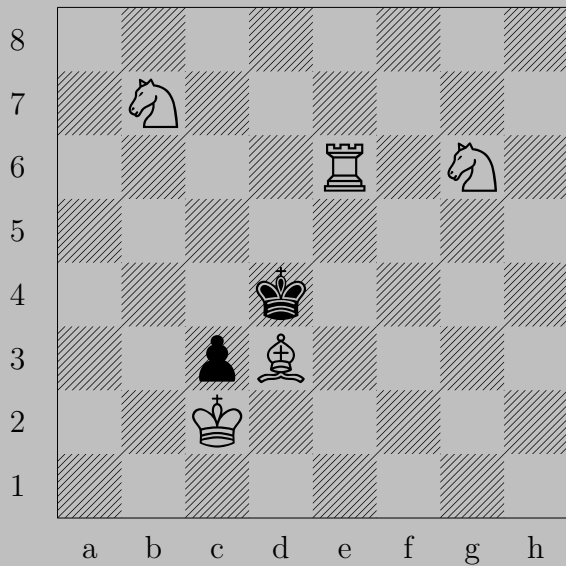
3383



♔a4

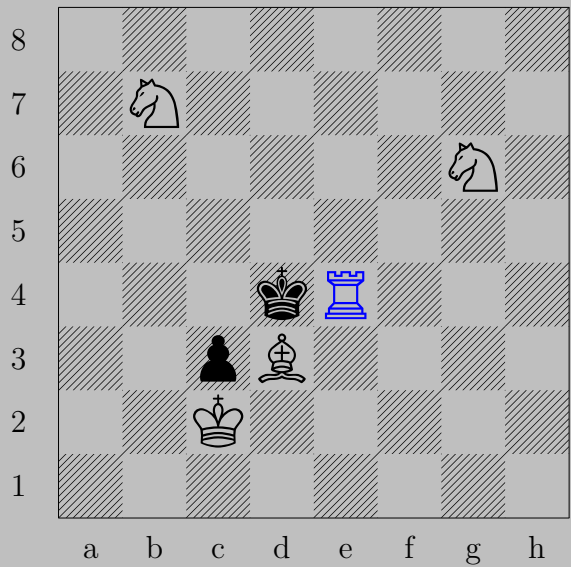
If ♖a6, ♙c8. If ♖a8, ♘b7.

3384



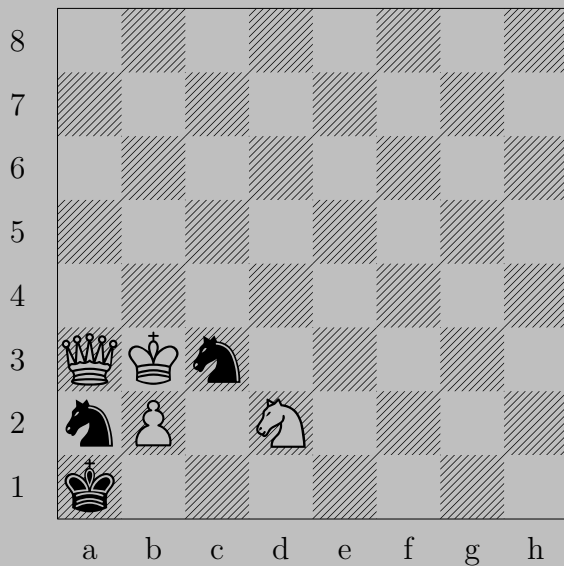
L. Talabèr, 1931

3384



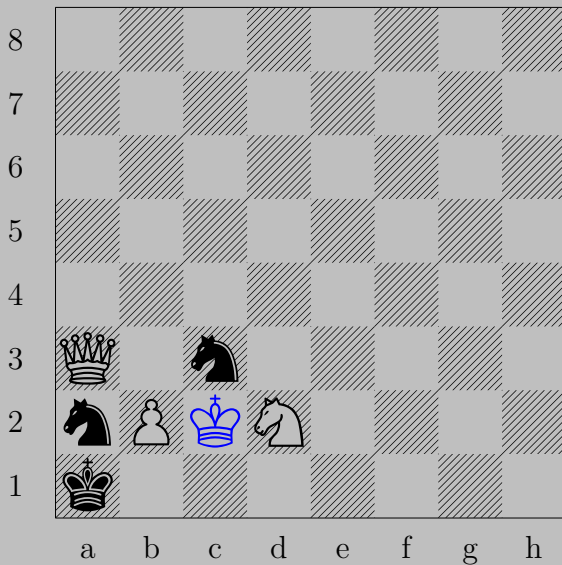
♖e4+, ♔d5
♞e7

3385



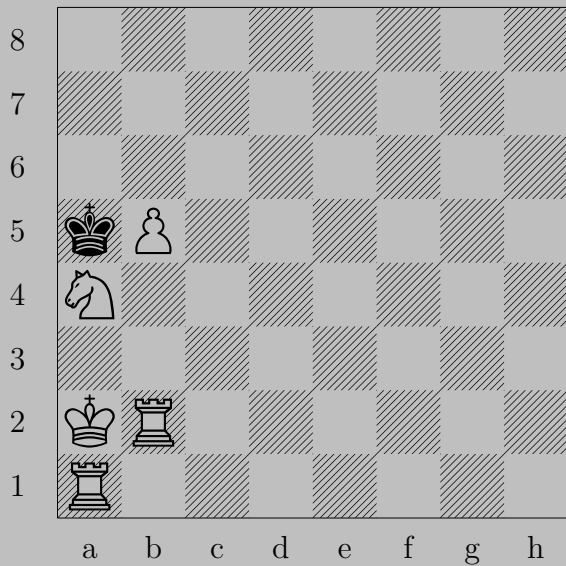
L. Talabèr, 1931

3385



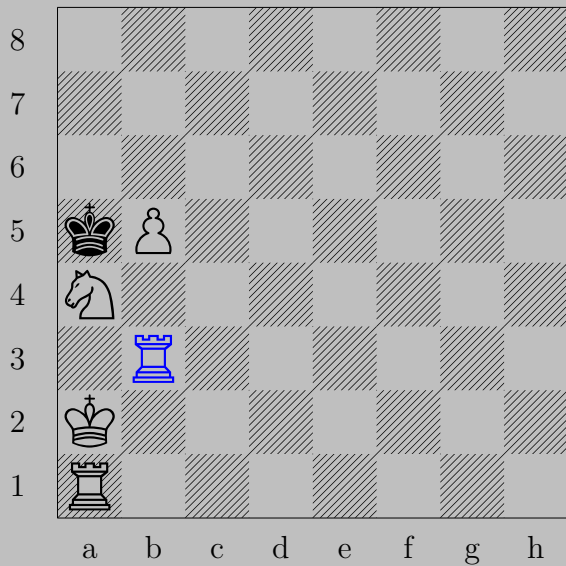
♔c2, ♞a4 or ♞b5 or ♞d5 or ♞e4 or ♞e2 or ♞d1 or ♞b1
♞b3

3386



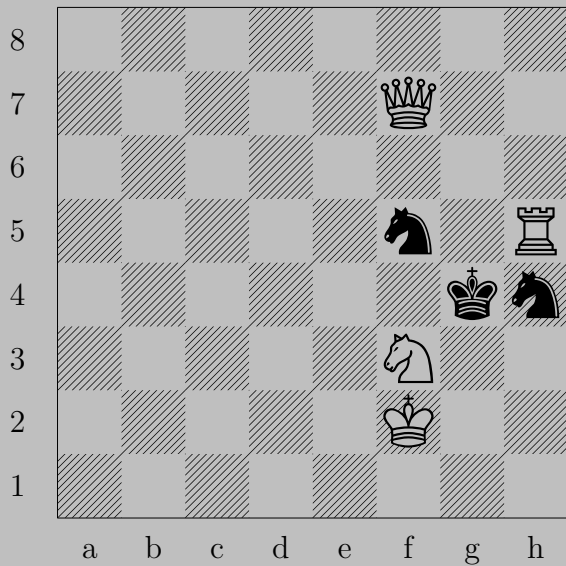
L. Talabèr, 1931

3386



♖b3, ♔xa4
♔b2

3387



L. Talabèr, 1931

3387

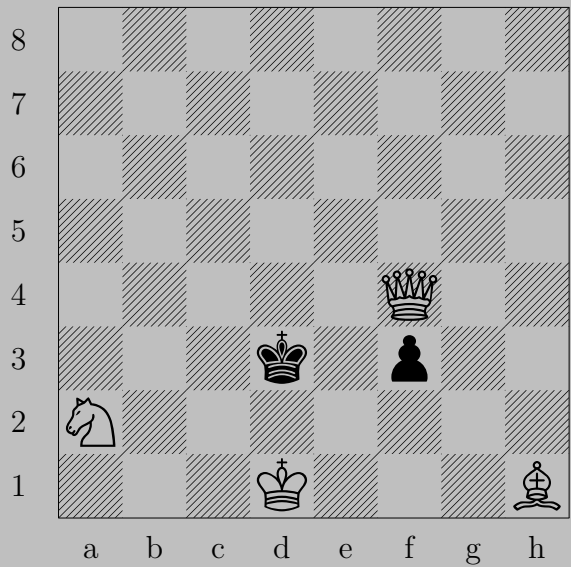


♙f6

If ♚xh5, ♙g5. If ♞xf3 or ♞g2 or ♞g6 or ♚h3, ♙xf5.

Otherwsie, ♖xh4.

3388



L. Talabèr, 1930

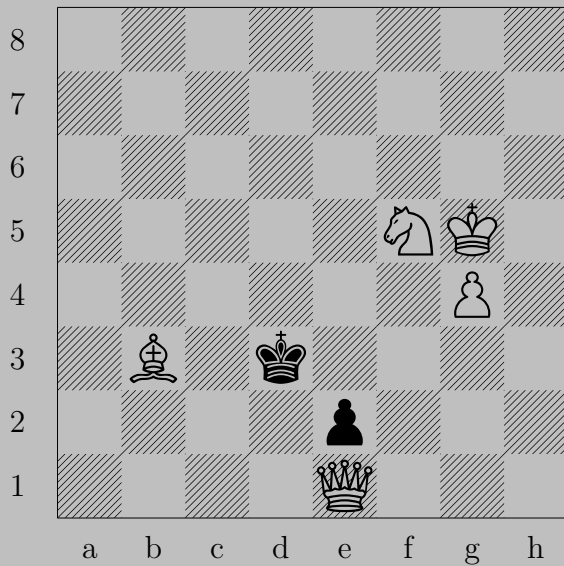
3388



♙×f3+

If ♔c4, ♙d5. If ♔d4, ♙c3.

3389



L. Talabèr, 1933

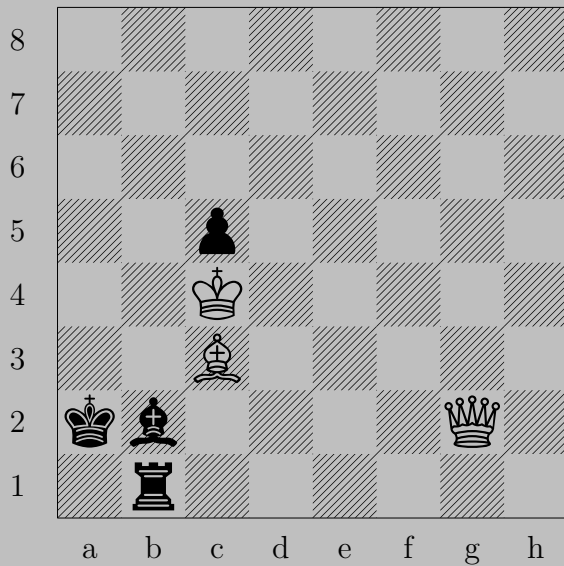
3389



♔c1

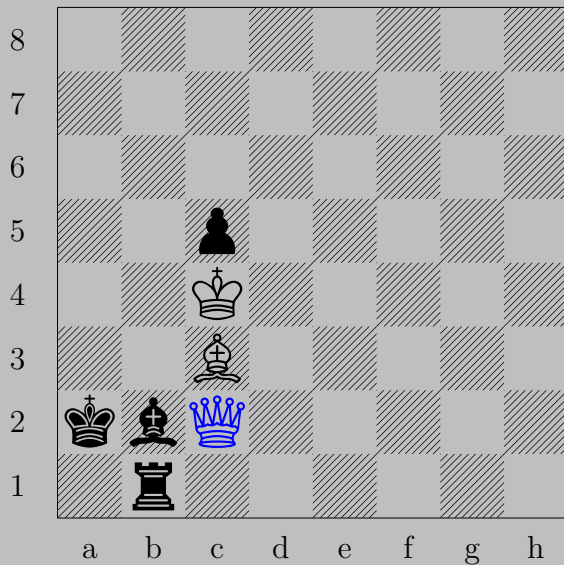
If $\text{♕e1}(\text{♔})$, ♔c2 . If $\text{♕e1}(\text{♞})$ or ♕e4 , ♔e3 .

3390



L. Talabèr, 1931

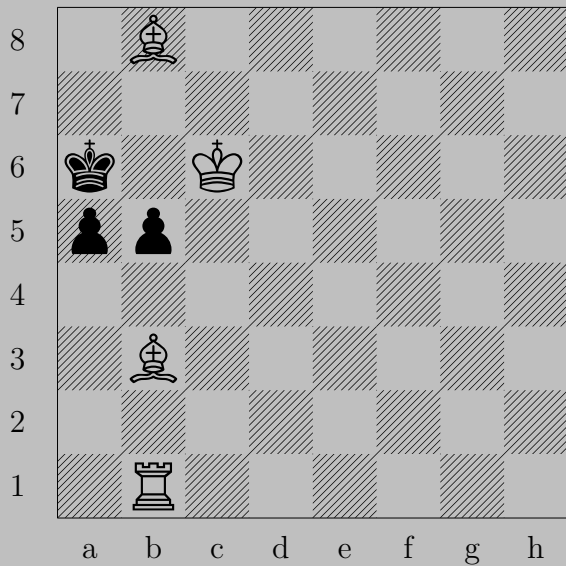
3390



♙c2

If ♔a3, ♚b3. If ♔a1, ♚a4. If ♖a1-h1, ♙x2.

3391



L. Talabèr, 1971

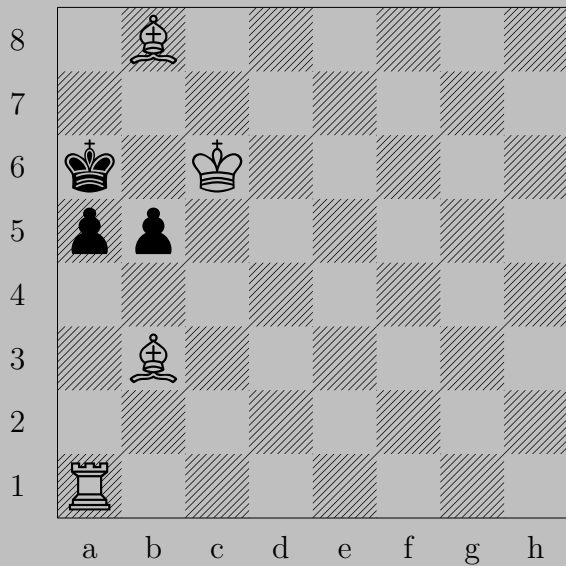
3391



♗a4

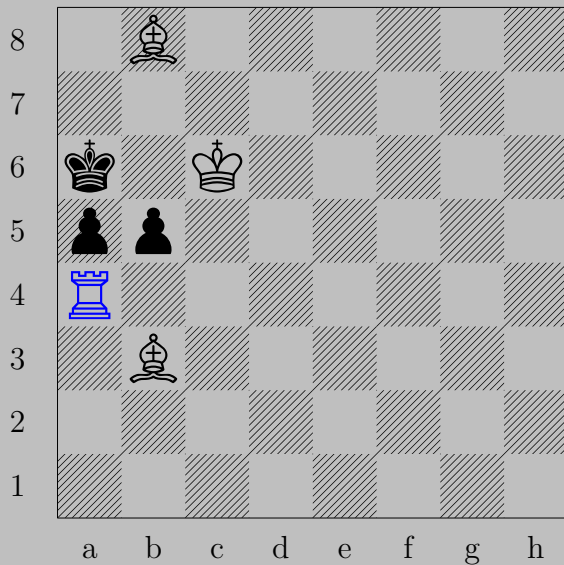
If ♙x a4 , ♖b6 . If ♙b4 , ♗b5 .

3392



L. Talabèr, 1971

3392



♖a4, ♗x a4 or ♗b4

♘c4

3393



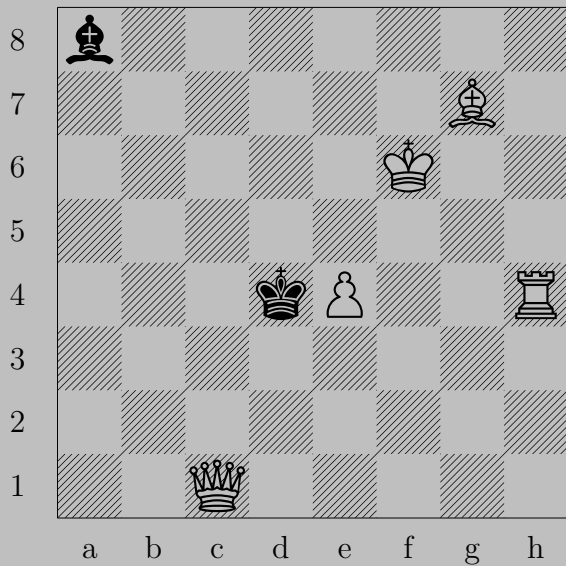
L. Talabèr, 1972



♙f6

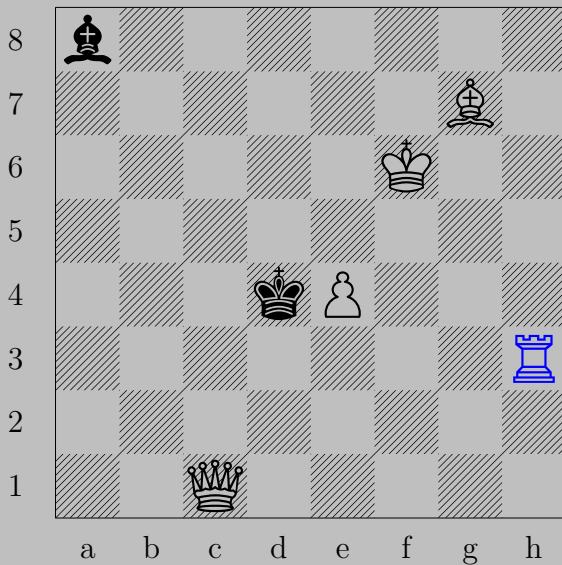
If ♙d7+, ♘d6. If ♙d8+, ♙×d8. If ♙e5-h3, ♙d8. If ♚f8, ♘h6.
Otherwise, ♘e5.

3394



L. Talabèr, 1970

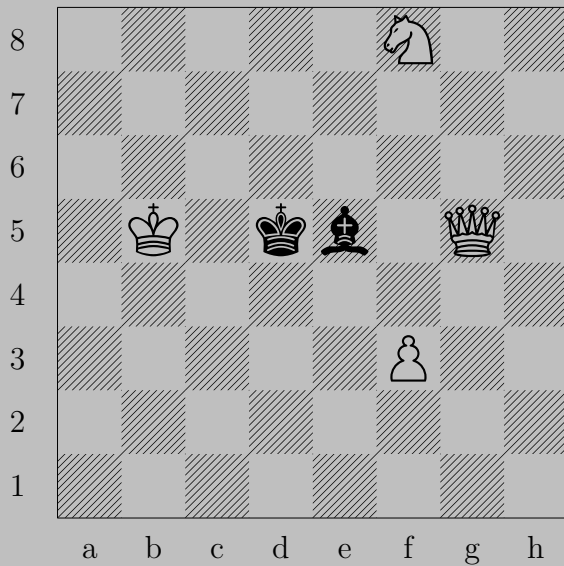
3394



$\text{R}h3$

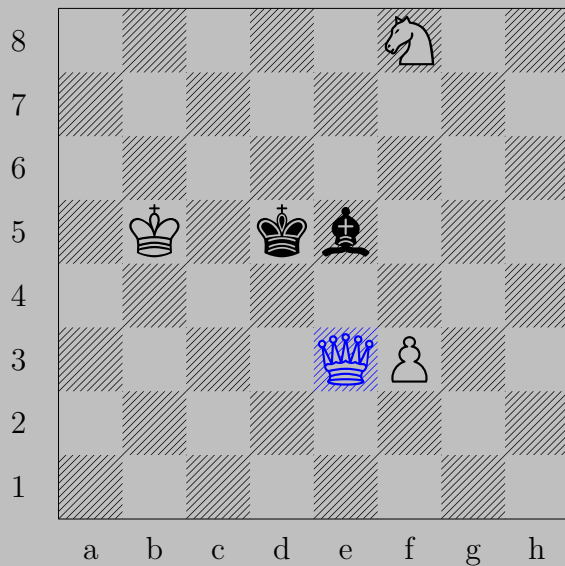
If $\text{Q} \times e4$, $\text{Q}c4$. If $\text{B} \times e4$, $\text{K}e6$. If $\text{B}b7-d5$, $\text{K}f5$.

3395



I. Telkes, 1924

3395

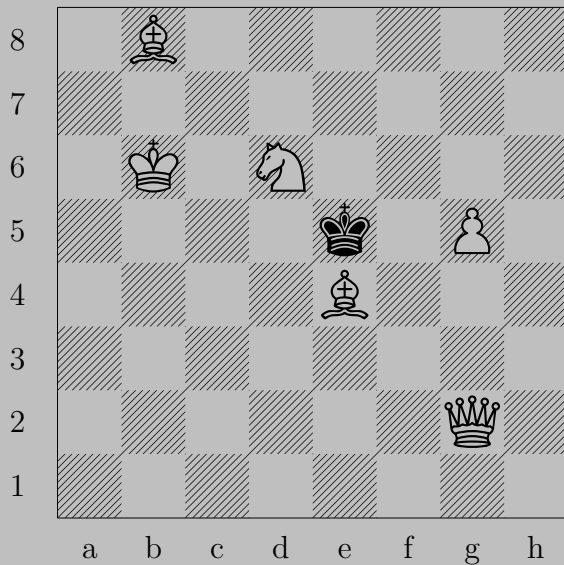


♔e3

If ♘d4, ♔e6. If ♘d6, ♔e4.

Otherwise, ♔c5.

3396



N. Tereshchenko, 1893

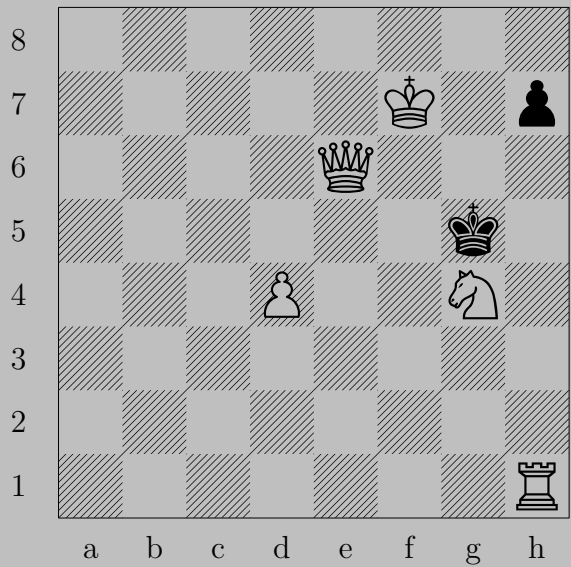
3396



♚e2

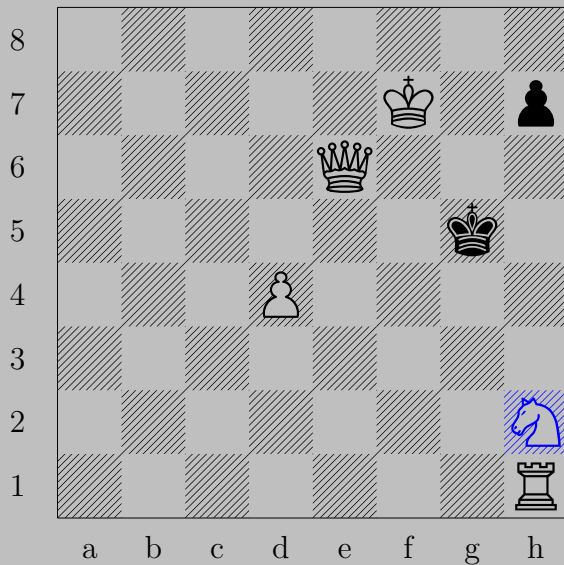
If ♙d4, ♞b5. If ♚e6, ♙c6. If ♙f4, ♞f7.

3397



T. Tikkanen, 1985

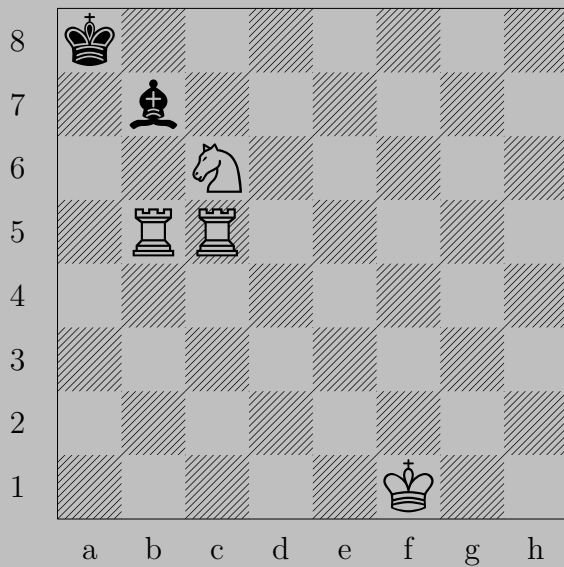
3397



♞h2

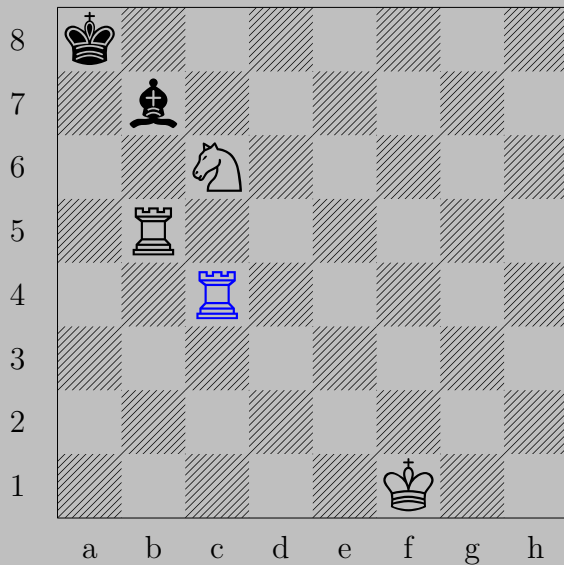
If ♔f4, ♚e5. If ♔h4 or ♔h5, ♞f3. If ♙h6, ♚g4. If ♙h5, ♚f6.

3398



C.J. Timenes, 1956

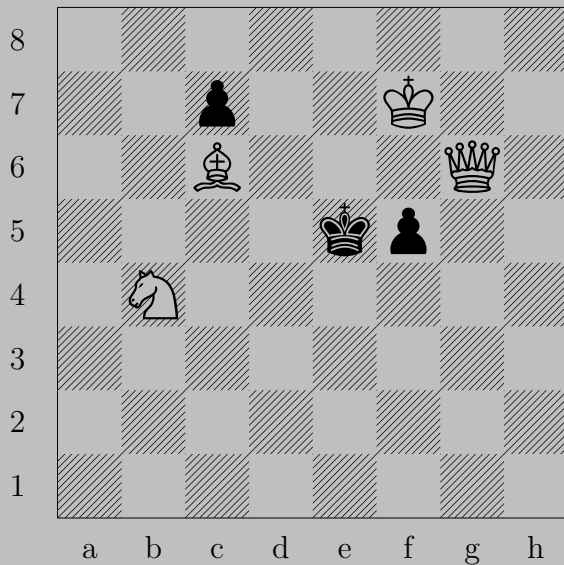
3398



Rc4

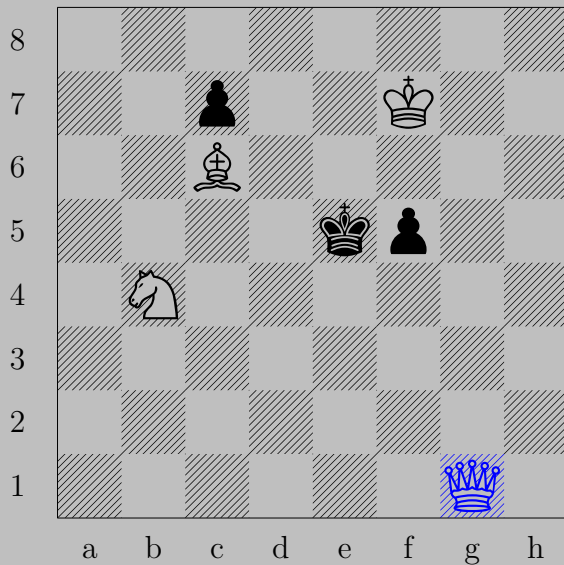
If Kxc4 , Ra4 . If Ka6 or Kc8 , Rb8 .

3399



I. Tkeshelashvili, 1893

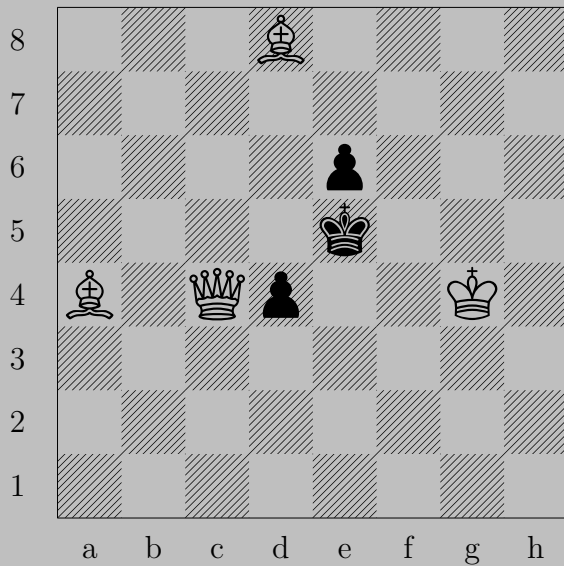
3399



♔g1

If ♕d6, ♖d4. If ♕f4, ♞d3. If ♜f4, ♗c5.

3400



I. Tokar, 1975

3400



♖b3

If ♜d3, ♞f4. If ♚d6, ♞c7. If ♚e4, ♞e2.