

Chess Puzzles

3601-3700

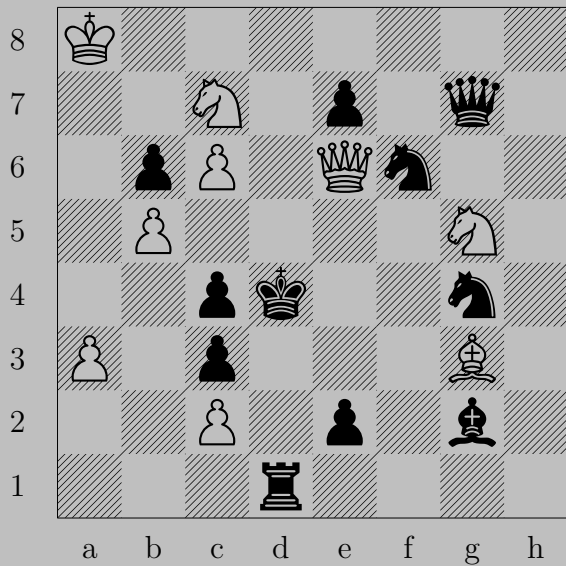
Mate in Two
White to Move

László Polgár

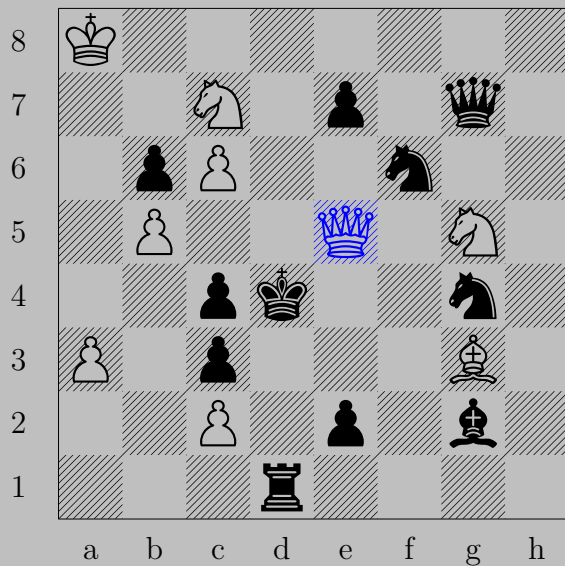
Links

3601	3602	3603	3604	3605	3606	3607	3608	3609	3610
3611	3612	3613	3614	3615	3616	3617	3618	3619	3620
3621	3622	3623	3624	3625	3626	3627	3628	3629	3630
3631	3632	3633	3634	3635	3636	3637	3638	3639	3640
3641	3642	3643	3644	3645	3646	3647	3648	3649	3650
3651	3652	3653	3654	3655	3656	3657	3658	3659	3660
3661	3662	3663	3664	3665	3666	3667	3668	3669	3670
3671	3672	3673	3674	3675	3676	3677	3678	3679	3680
3681	3682	3683	3684	3685	3686	3687	3688	3689	3690
3691	3692	3693	3694	3695	3696	3697	3698	3699	3700

3601

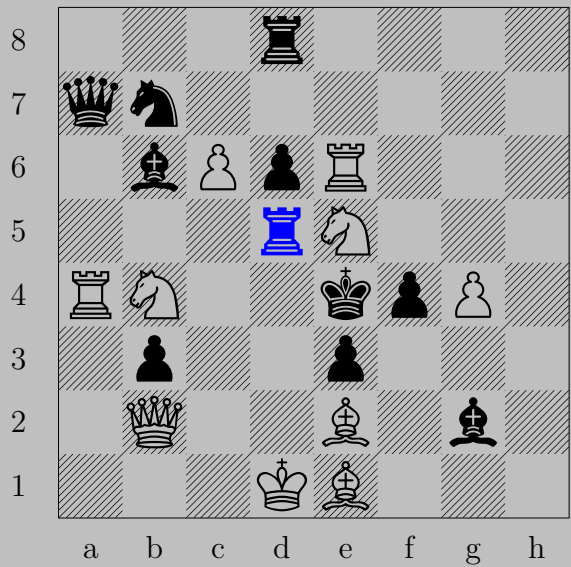


3601



♚e5+, ♘xe5
♝f2

3602



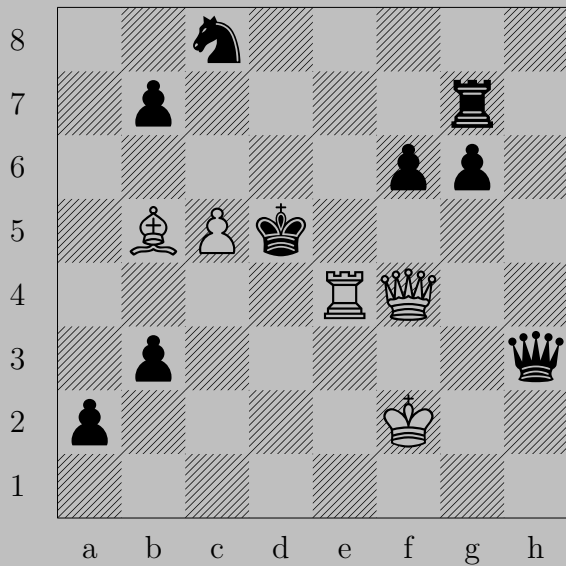
3602



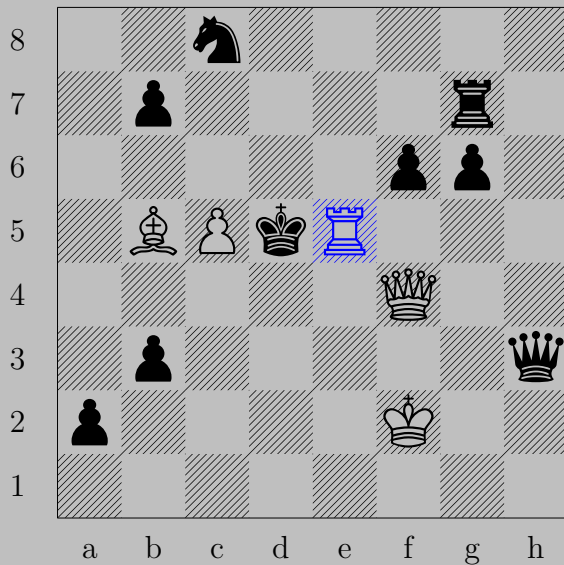
♔d4+

If ♖xd4+, ♗(e5)d3. If ♙xd4, ♙d3.

3603



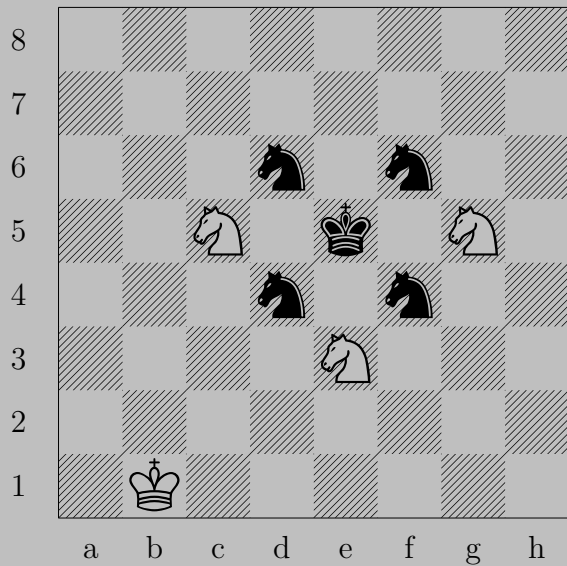
3603

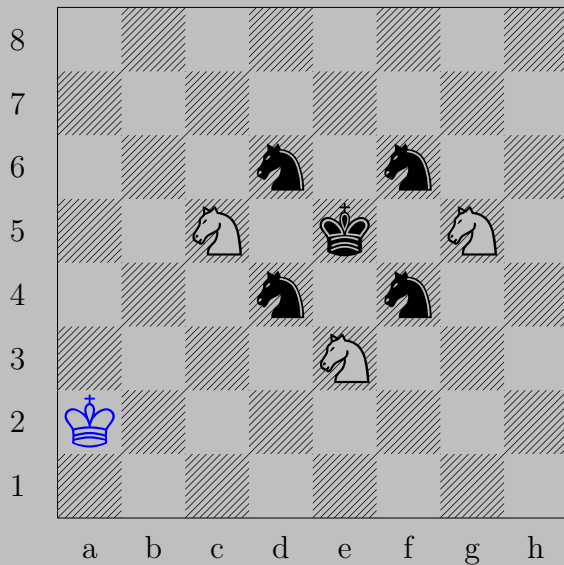


R e5+, P x e5

Q c4

3604





♔a2

If ♞(d4) anywhere, ♞f3. If ♞(d6) anywhere, ♞f7.

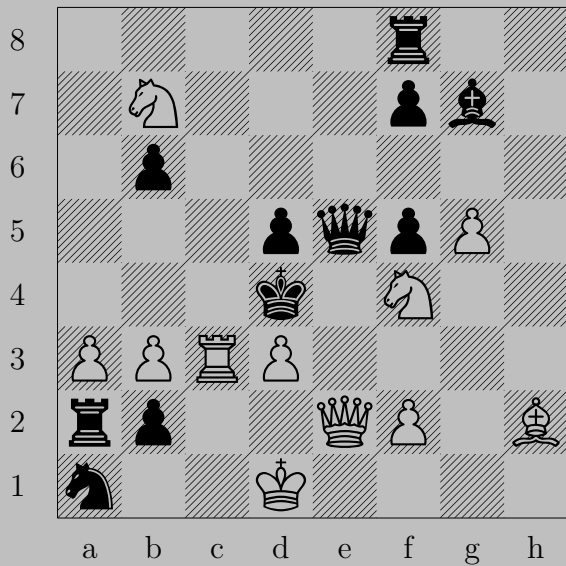
If ♞(f4) anywhere, ♞d3. If ♞(f6) anywhere, ♞d7.

3605

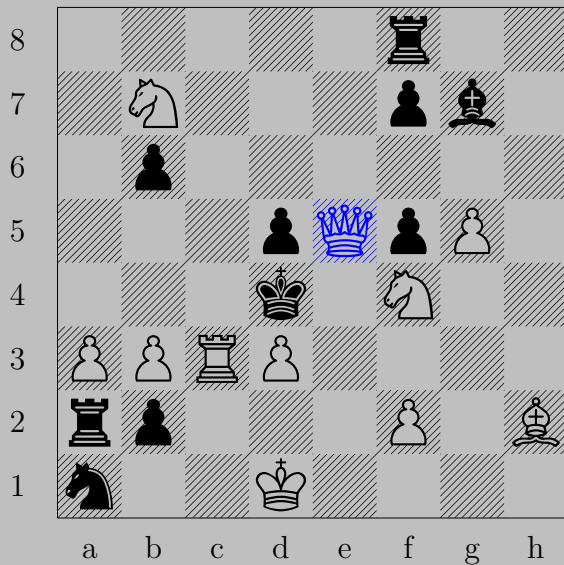


♙h5+, ♖xh5
♘h4

3606

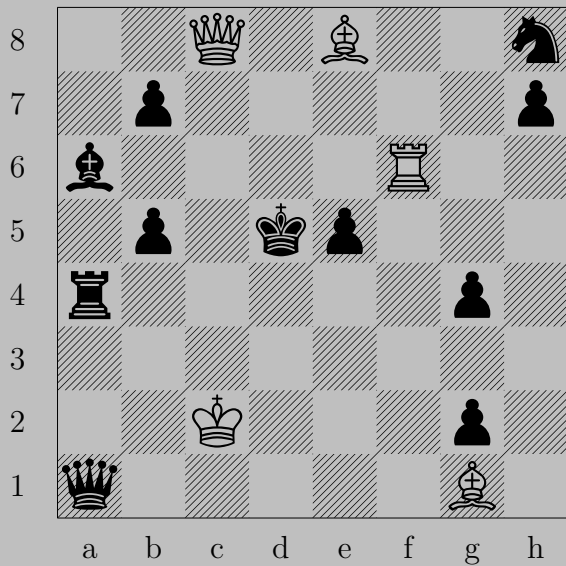


3606

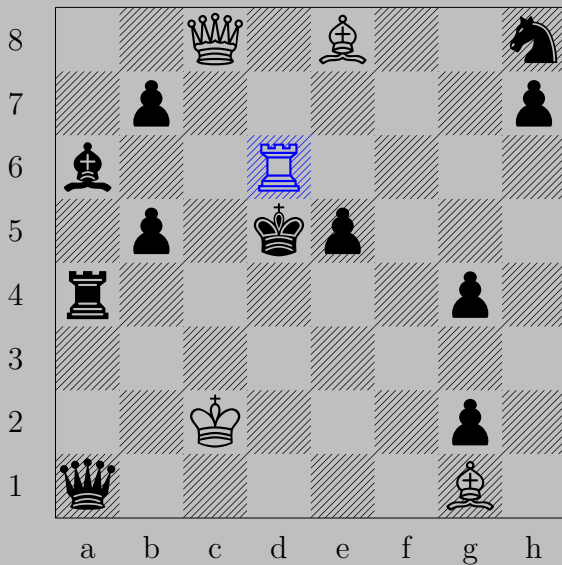


$\text{♔} \times e5+, \text{♕} \times e5$
 $\text{♞} e2$

3607



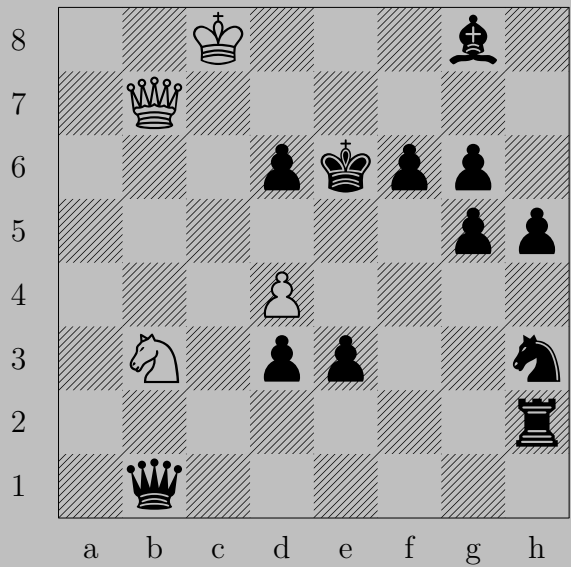
3607



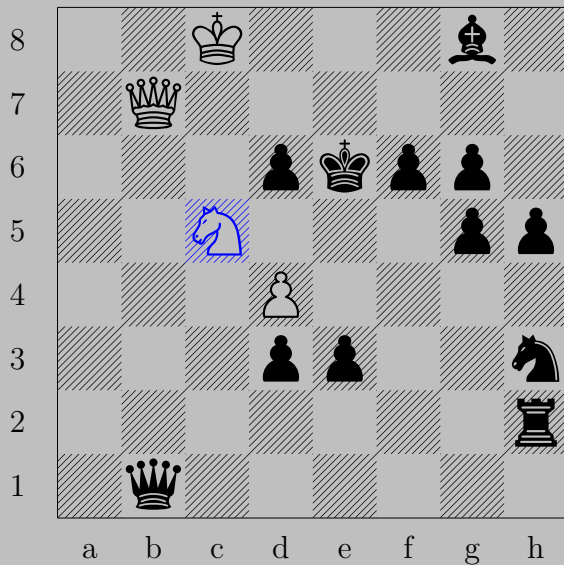
♖d6+

If ♕×d6, ♔d7. If ♔e4, ♔×g4.

3608



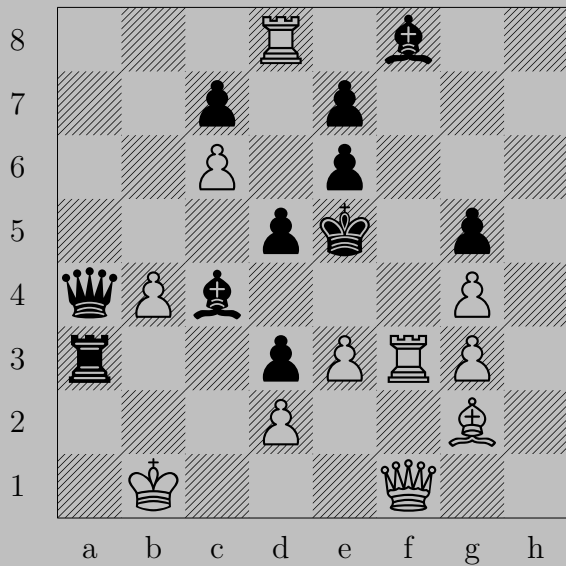
3608



♞c5+

If ♟xc5 , ♞d7 . If ♞f5 , ♞e4 .

3609



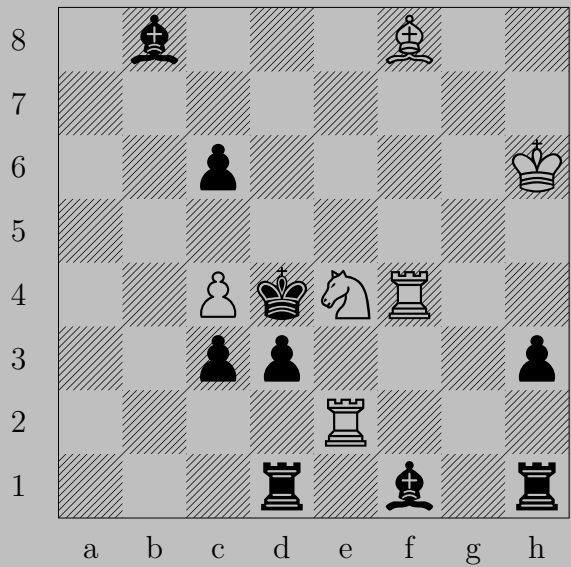
3609



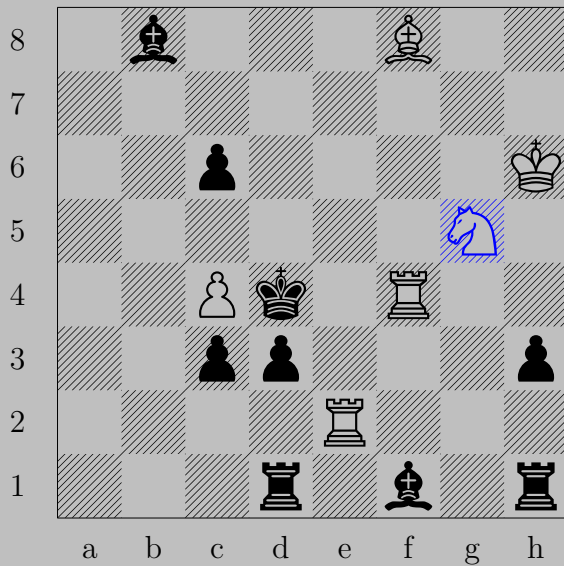
Rook f5+, Pawn x f5

King x f5

3610

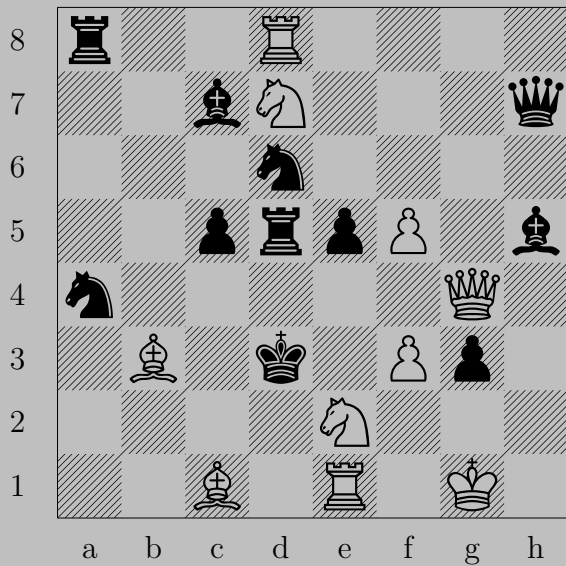


3610



♞g5+, ♙x4
♖e4

3611

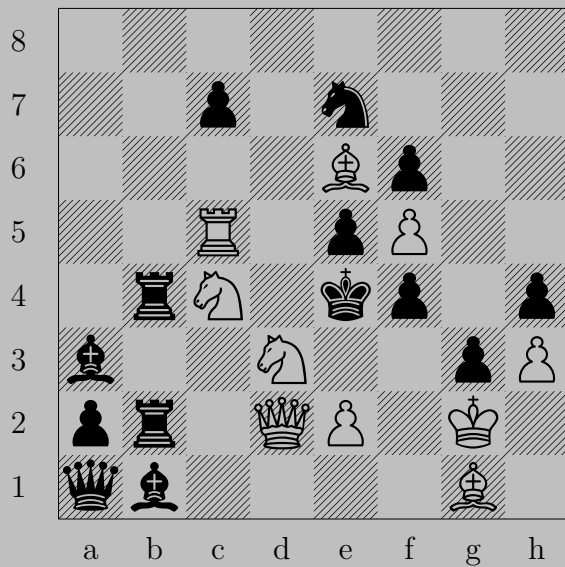


3611

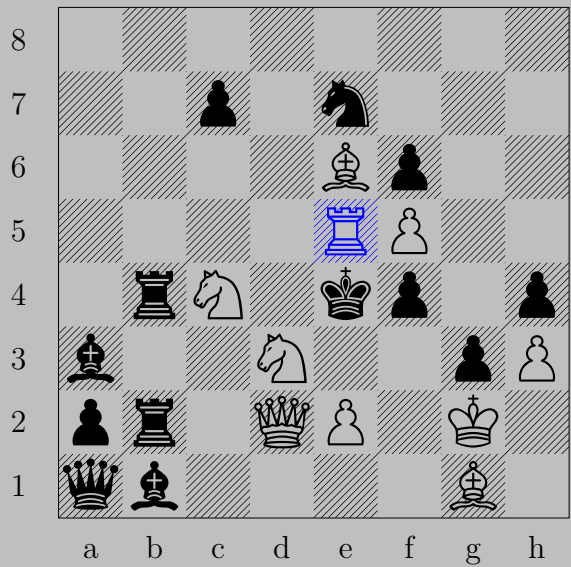


♞xe5+, ♜xe5
♚c4

3612

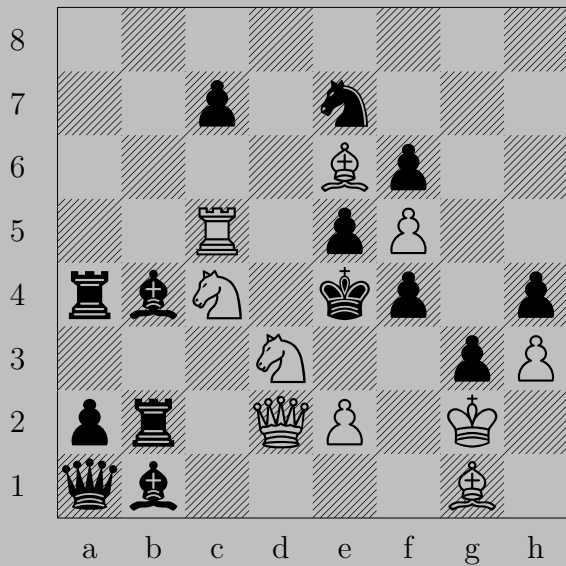


3612

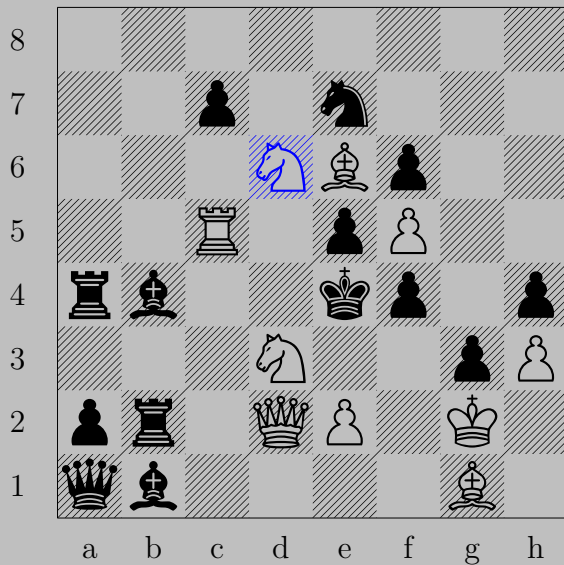


♖xe5+, ♙xe5
♞c5

3613

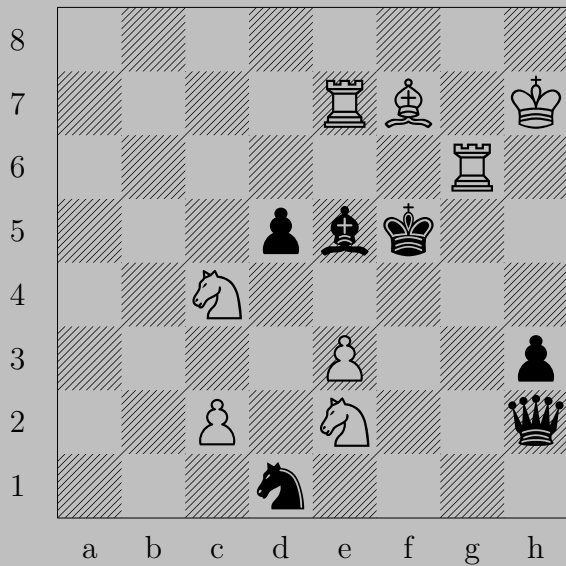


3613



♞d6+, ♙x♙d6
♖c4

3614

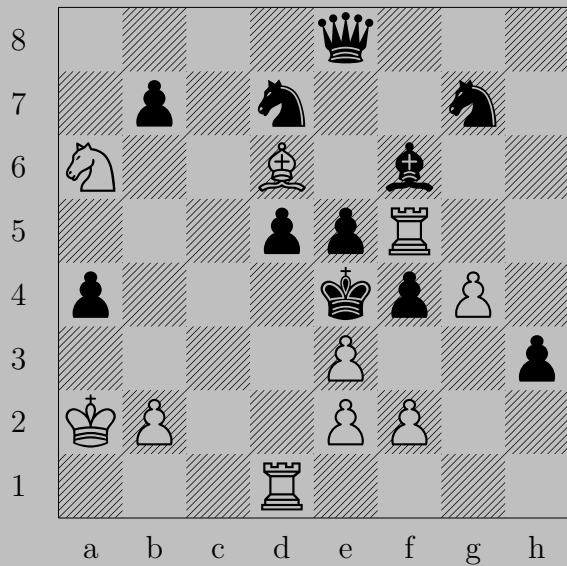


3614

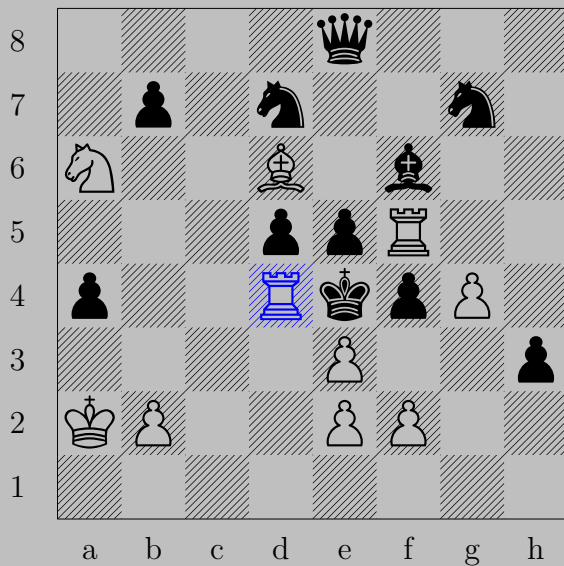


Nd6+, Qxd6
Nd4

3615



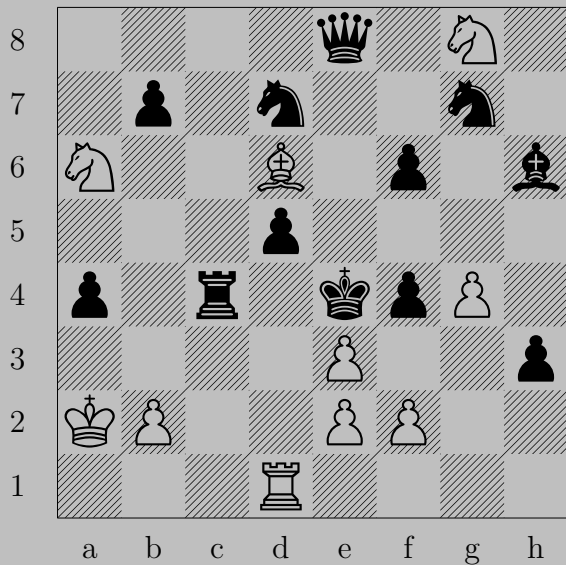
3615



♖d4+, ♙×d4

♖×f4

3616



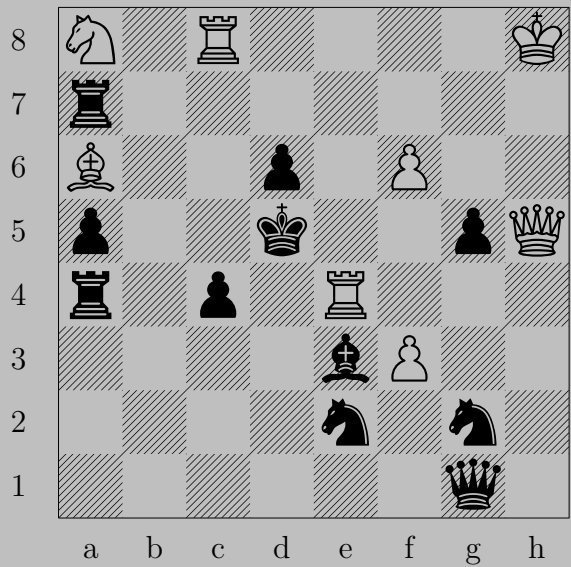
3616



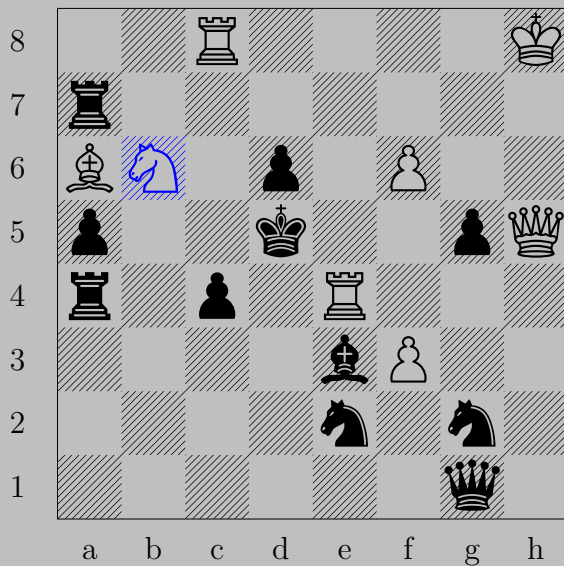
Nc5+

If Rxc5 , Rd4 . If Nxc5 , Nxf6 .

3617

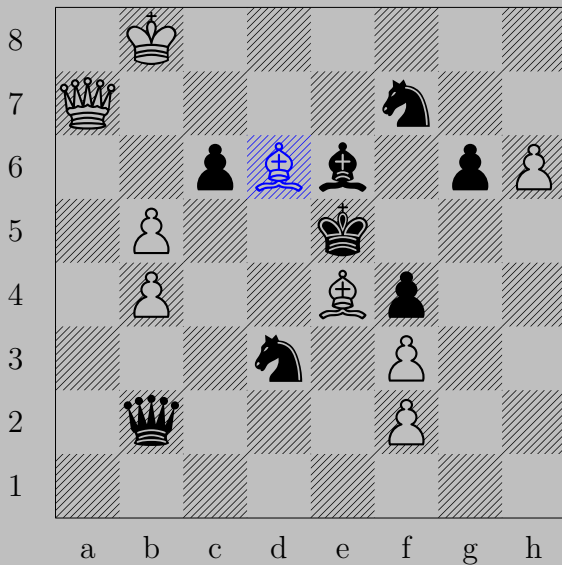


3617



$\text{N}b6+, \text{B}xb6$
 $\text{Q}xg5$

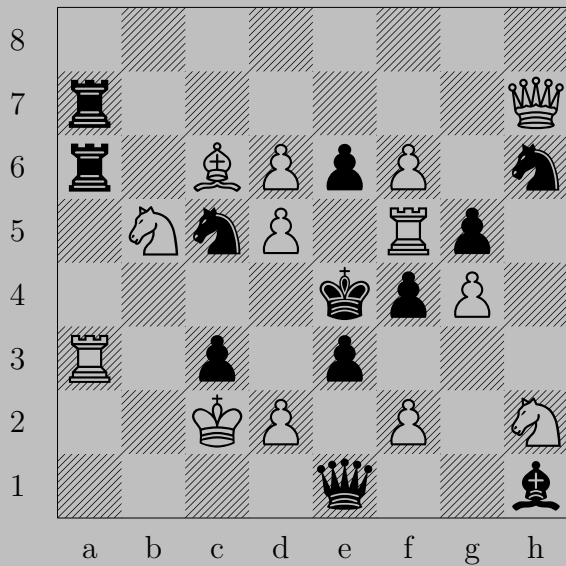
3618



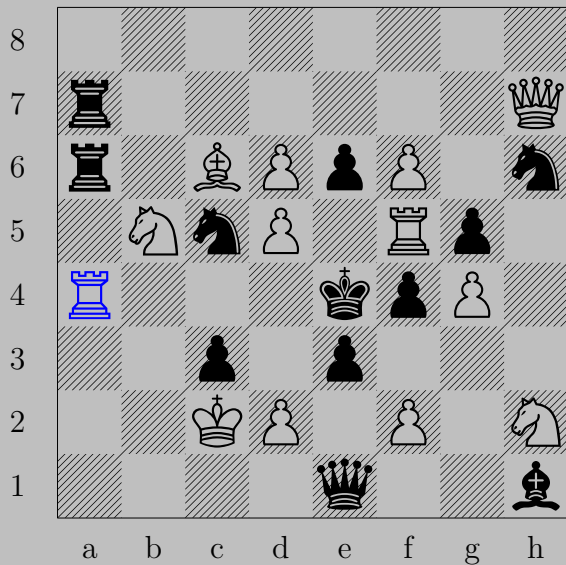
♗d6+

If ♞×d6, ♚g7. If ♔×d6, ♚c7. If ♔f6, ♚e7.

3619



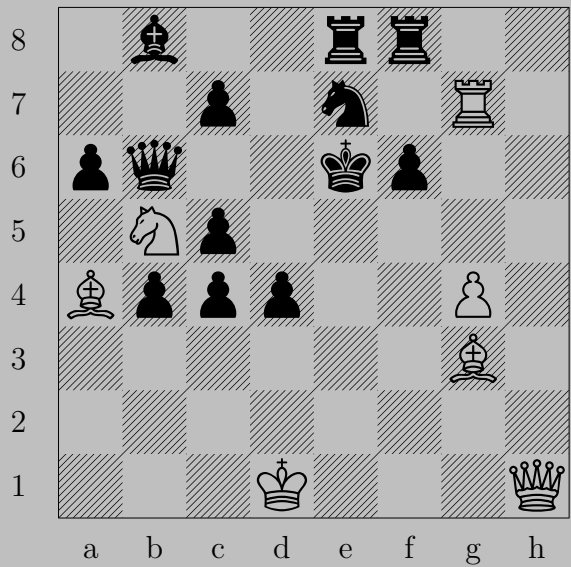
3619



$\text{R}a4+$

If $\text{N}xa4$, $\text{B}d3$. If $\text{R}xa4$, $\text{B}xe6$.

3620

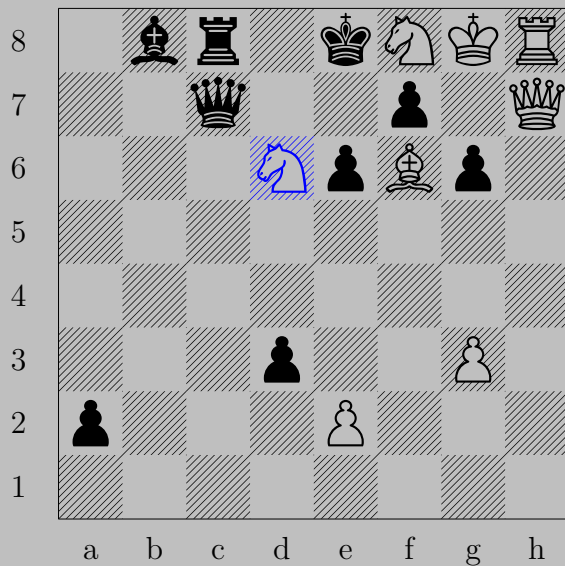


3620



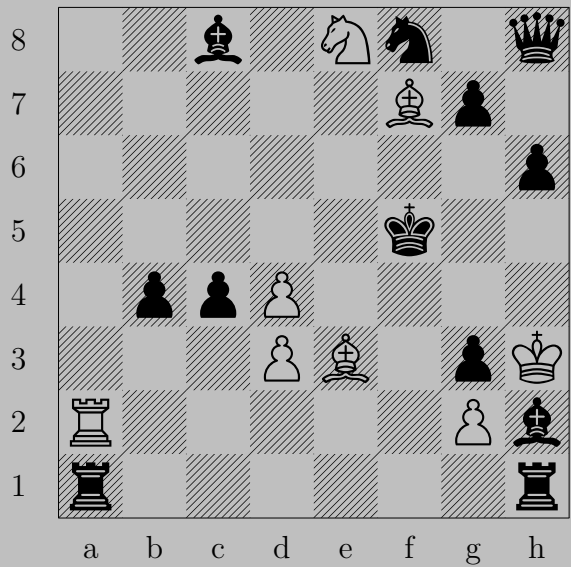
♞×d4+, ♟×d4
♙e4

3621

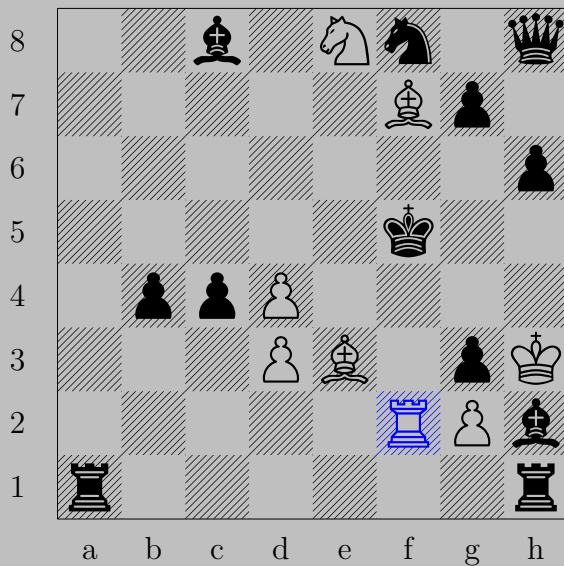


♘×d6+, ♚×d6
♚×f7

3622



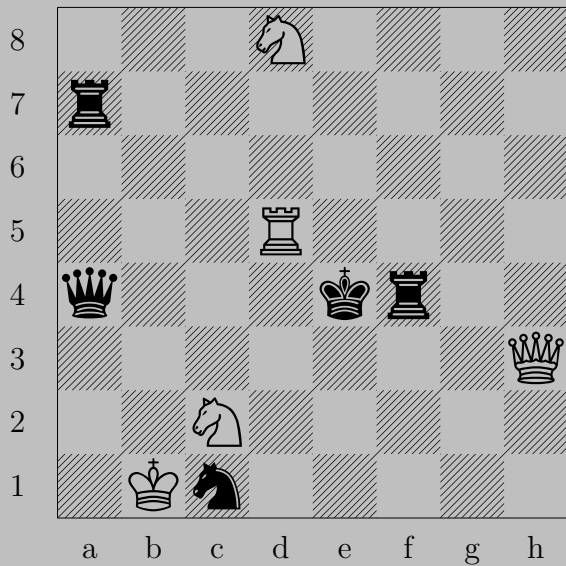
3622



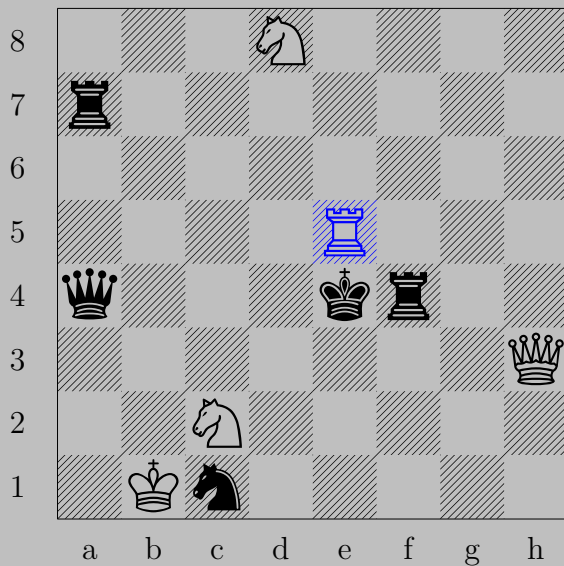
Rf2+, Px f2

Pg4

3623

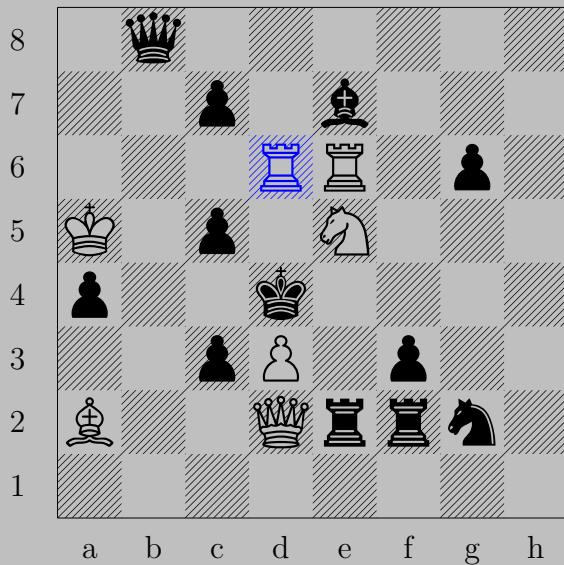


3623



R_{e5}+, K_{e5}×e5
Q_{e6}

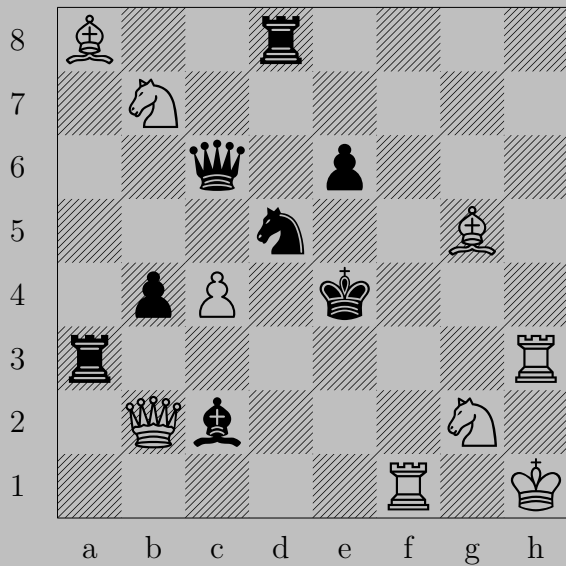
3624



♖(c6)d6+, ♙×d6 or ♘×d6




♞c6

3625

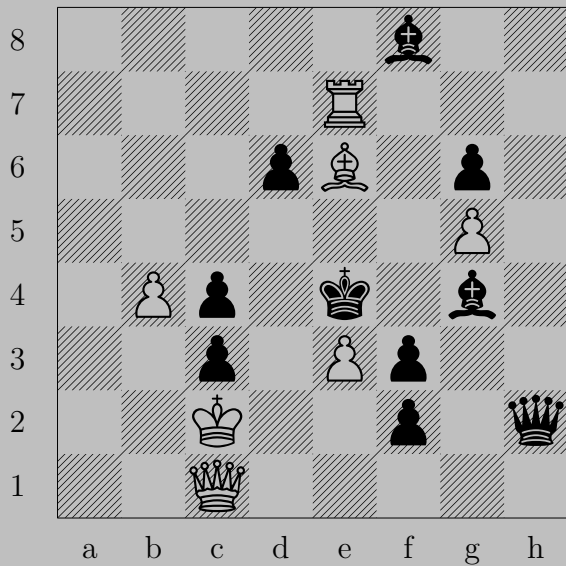


3625

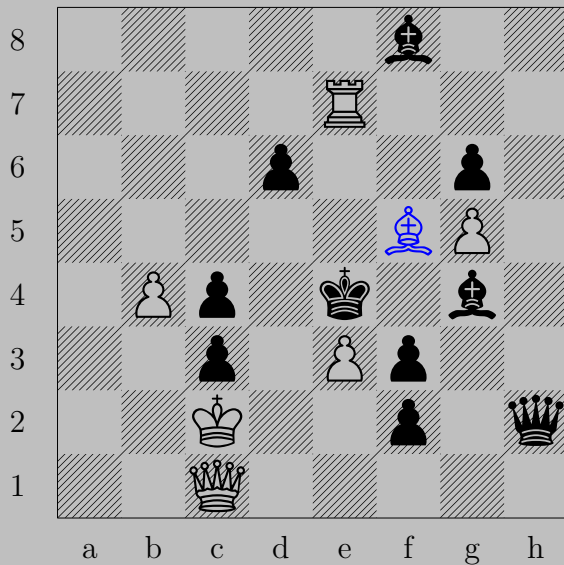


c5+, xc5
f4

3626



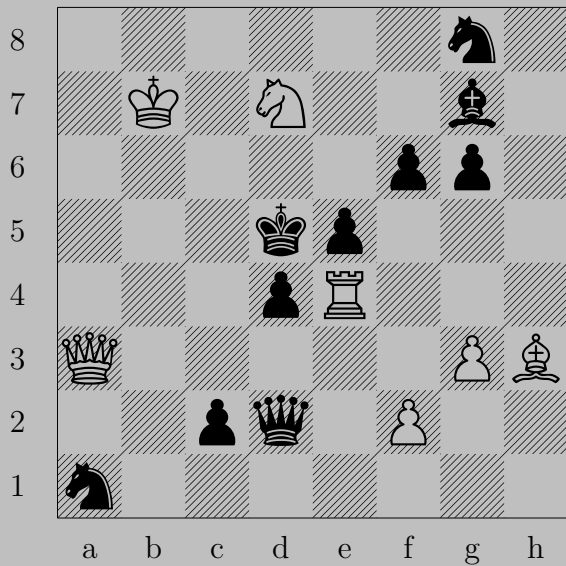
3626



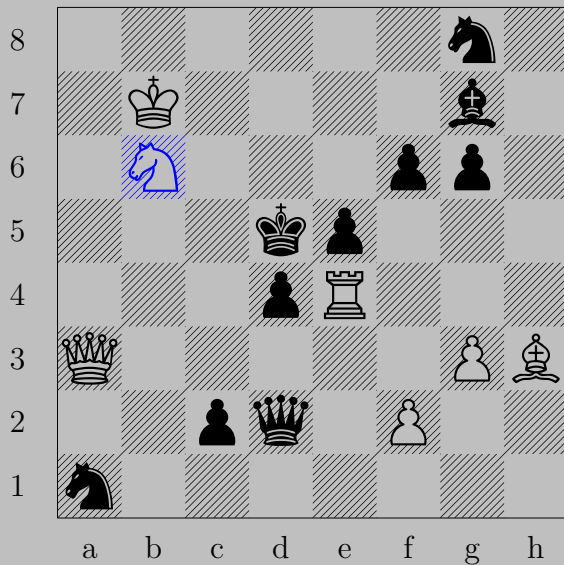
♠f5+

If ♖×f5, ♙e4. If ♖d5, ♙e4.

3627



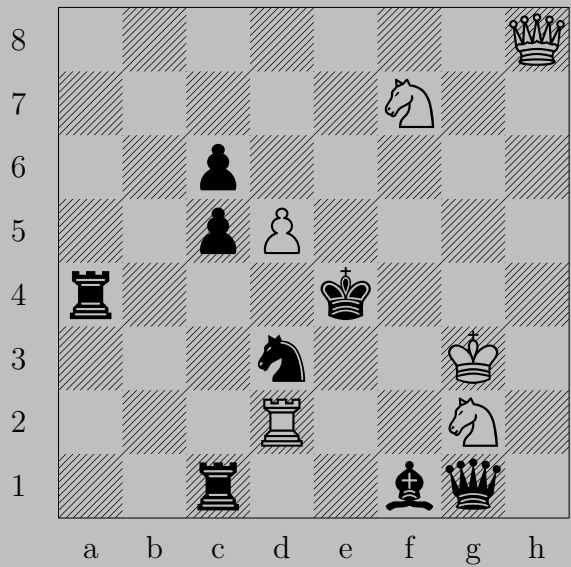
3627



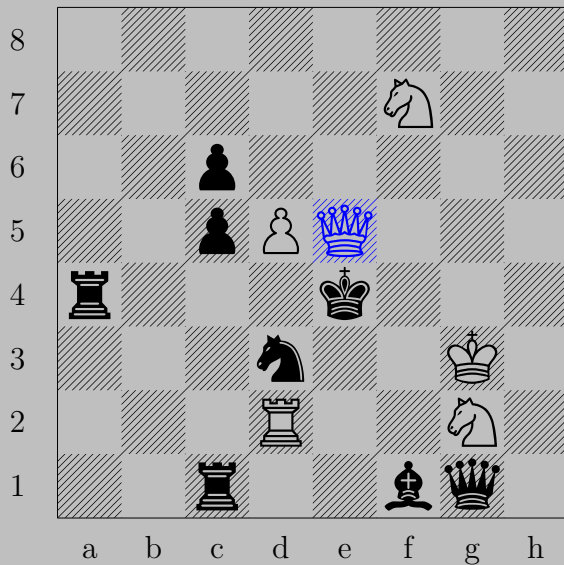
$\text{♞b6+}, \text{♔xe4}$

♙f3

3628

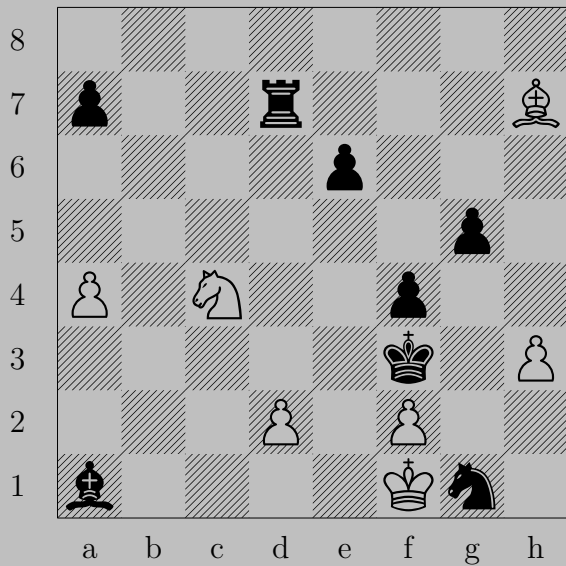


3628

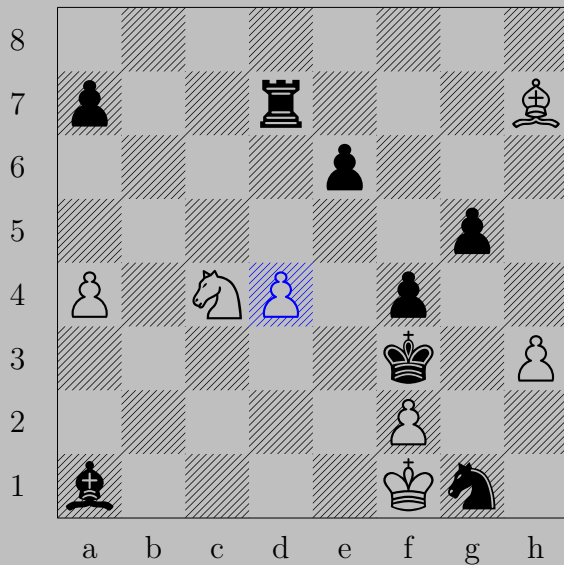


♔e5+, ♖xe5
♘d6

3629



3629

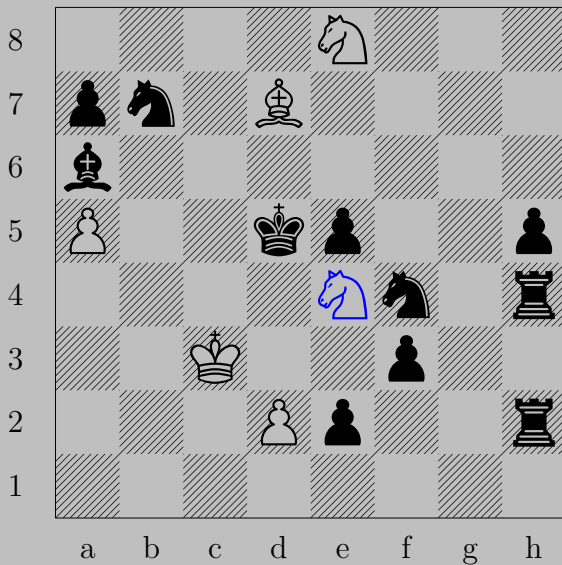



♙d4


If ♚xd4 or ♜e5 , ♞d2 .

Otherwise, ♞e5 .

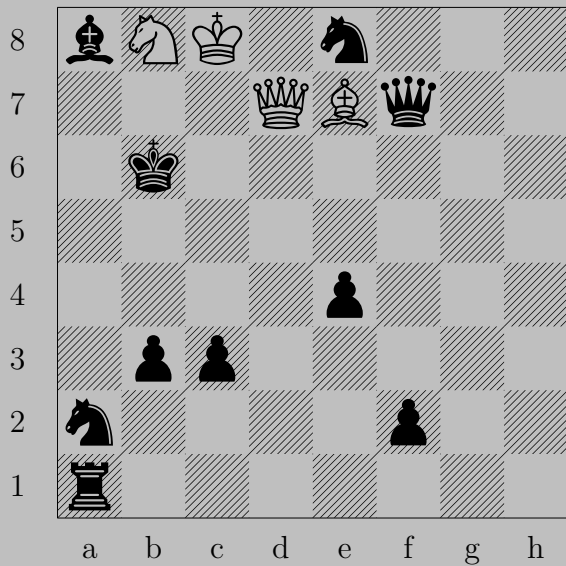
3630



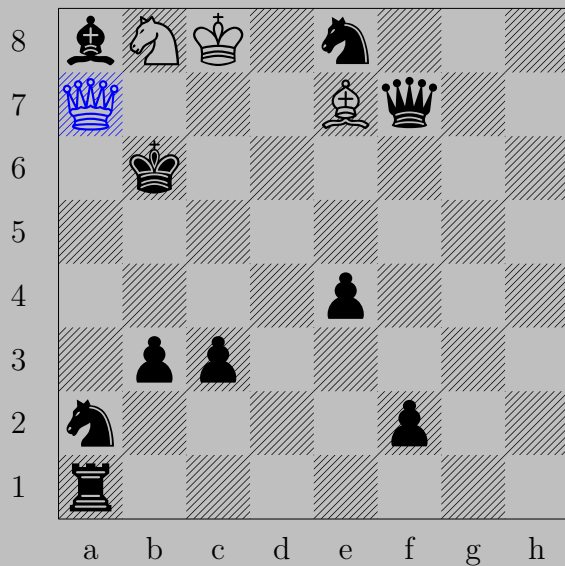
e4, anything

 (e8)f6

3631



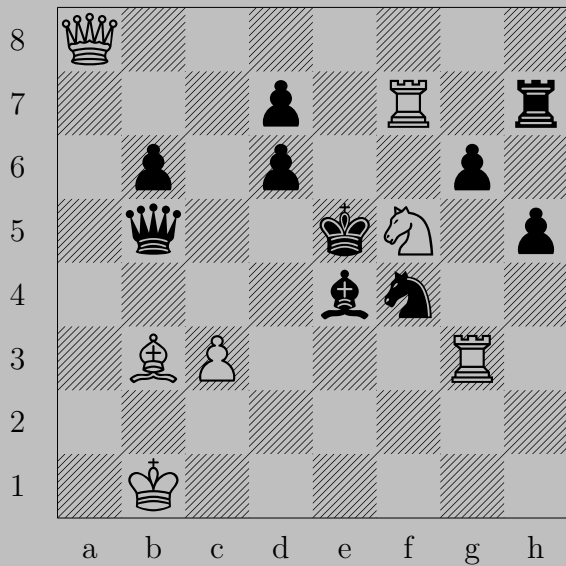
3631



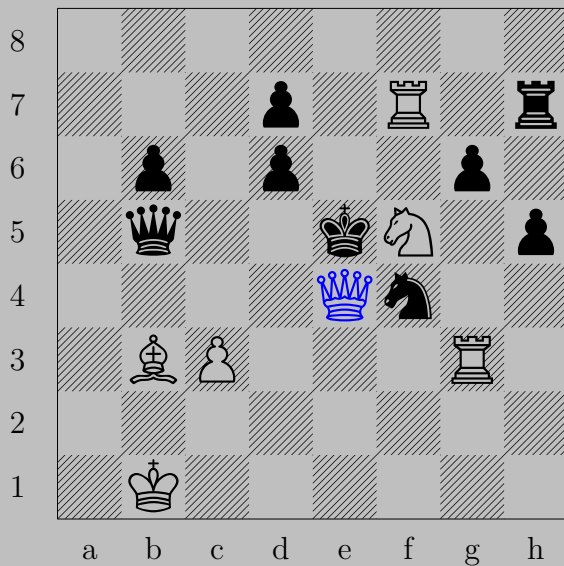
♙a7+

If ♙x a7, ♙c5. If ♙b5, ♙a6.

3632

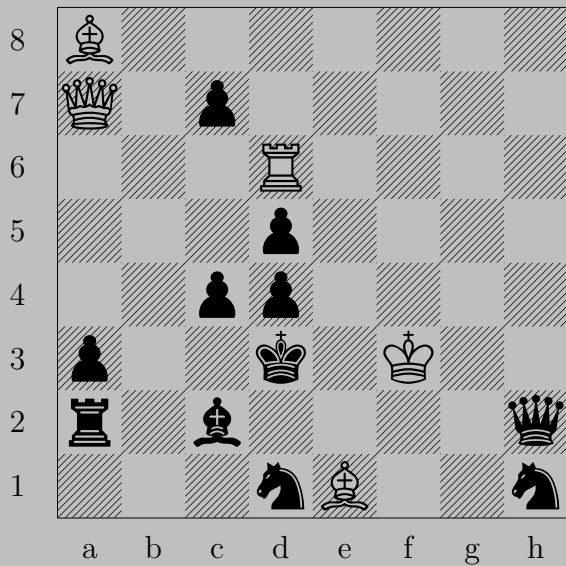


3632



♔xe4+, ♔xe4
♖e3

3633

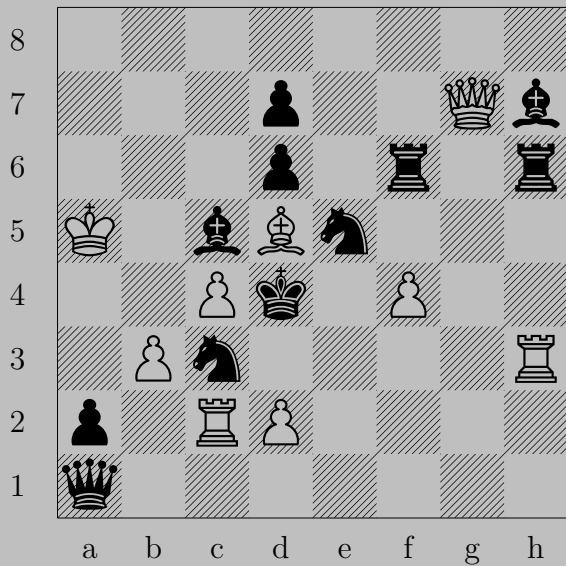


3633

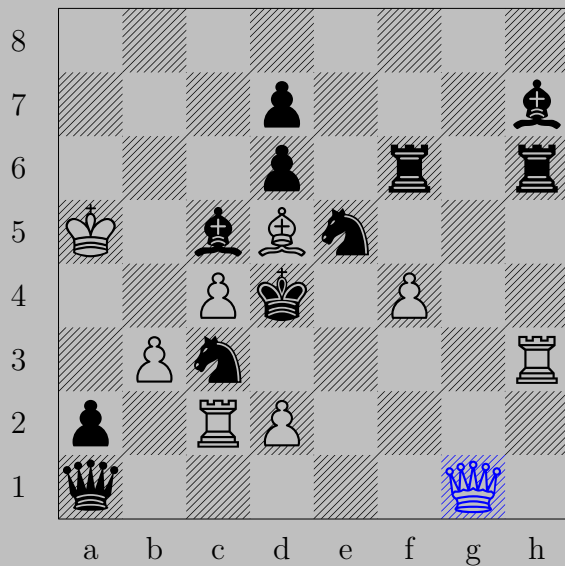


♙×d4+, ♚×d4
♖×d5

3634

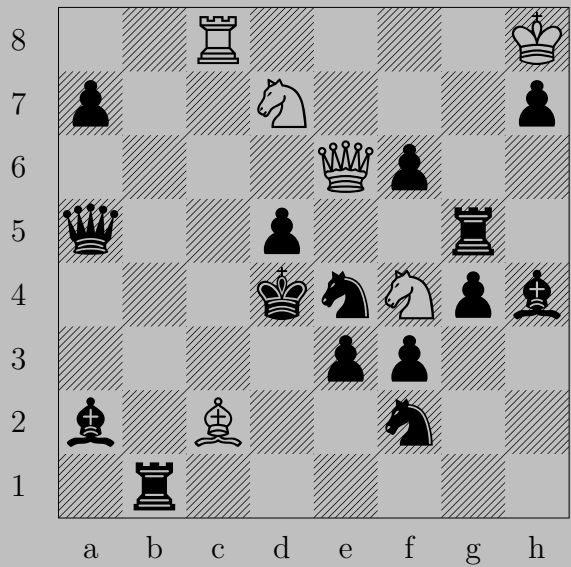


3634



♚g1+, ♚xg1
♙xc3

3635

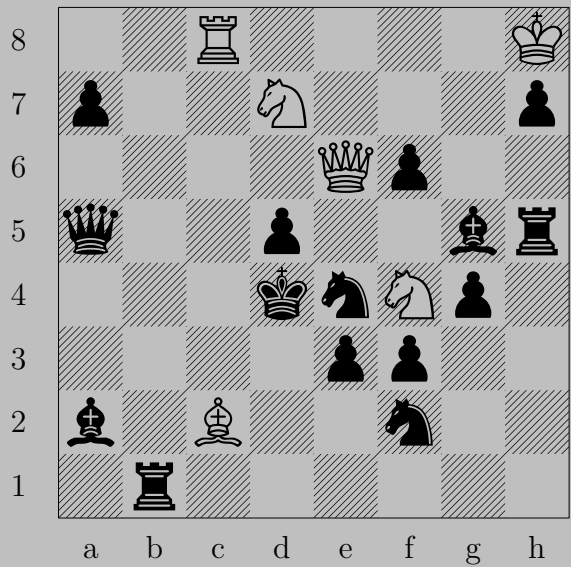


3635

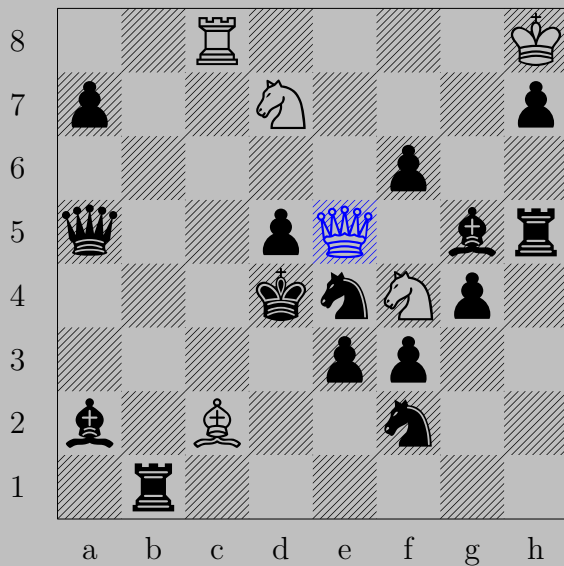


$\text{♙}\times\text{f6}+$, $\text{♘}\times\text{f6}$ or $\text{♖}\text{e5}$
 $\text{♘}\text{e6}$

3636

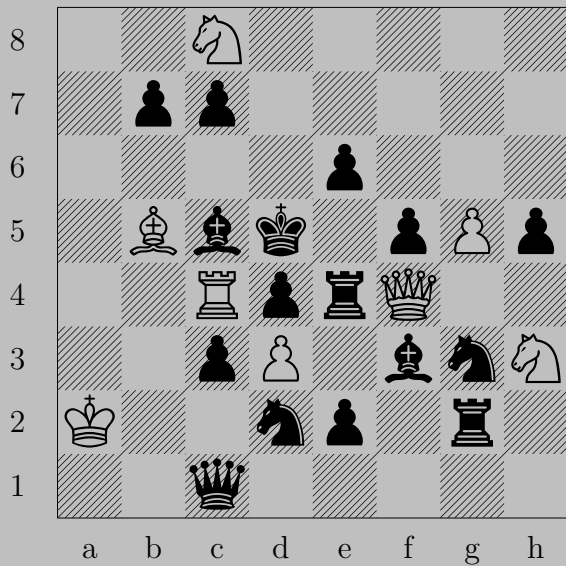


3636

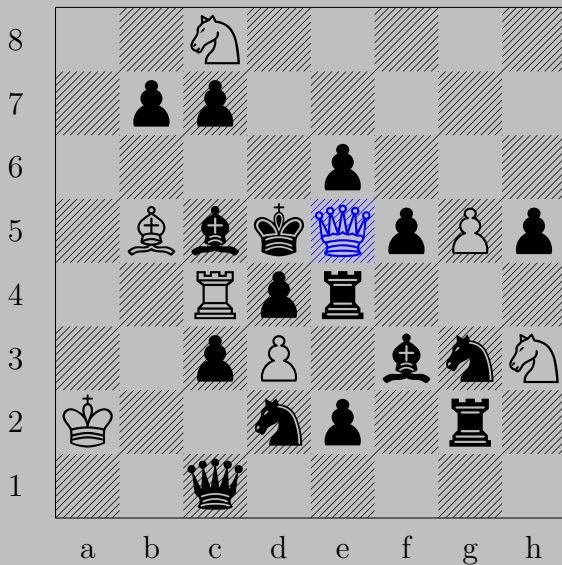


♔e5+, ♕xe5
♞e6

3637



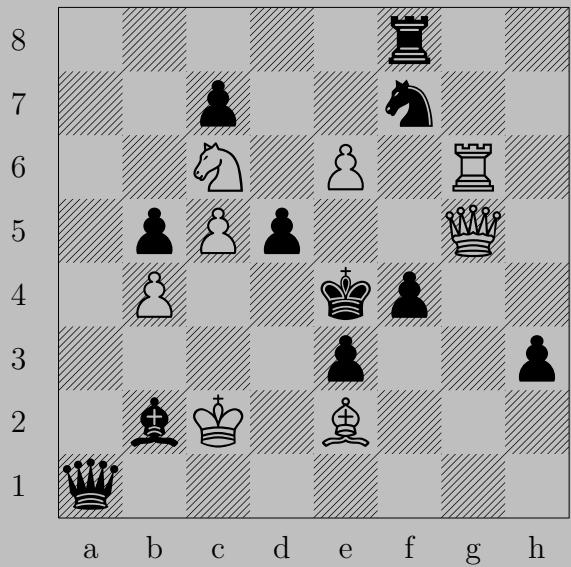
3637



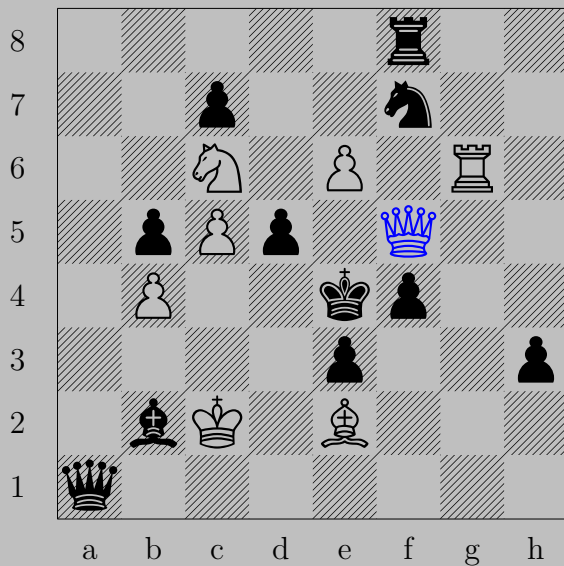
♔e5+

If ♖xe5, ♞f4. If ♚xe5, ♜xc5.

3638

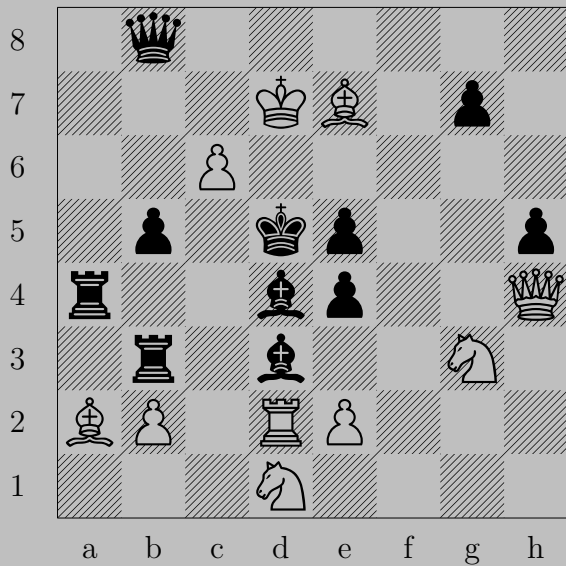


3638

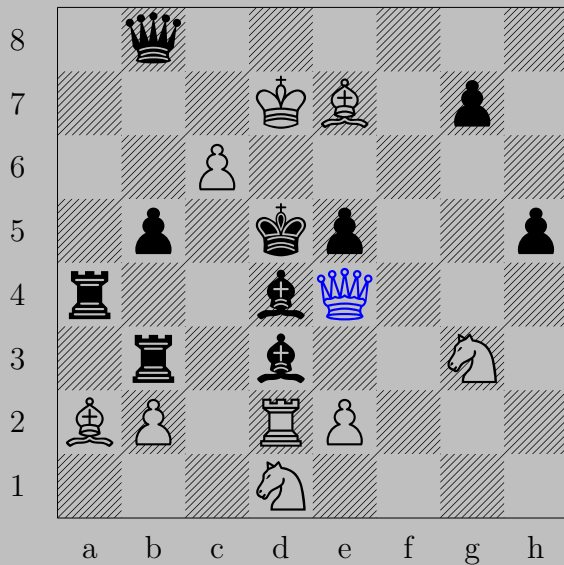


♙f5+, ♚×f5
♘d3

3639



3639



♙×e4+, ♘×e4 or ♚c4
♞e3

3640



♙d4+, ♘xc4
♘f3

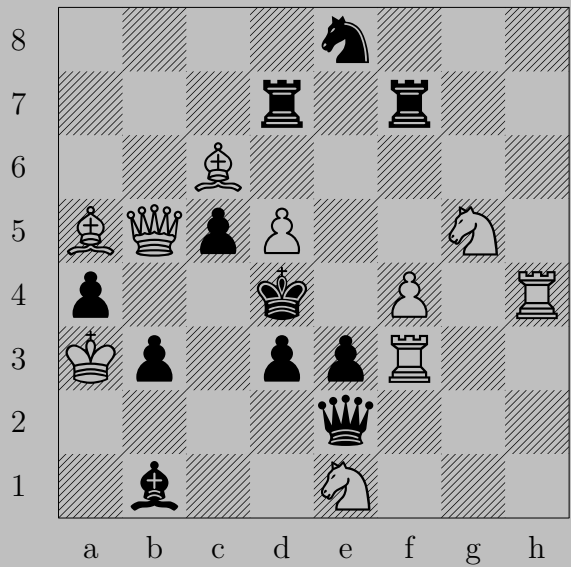
3641



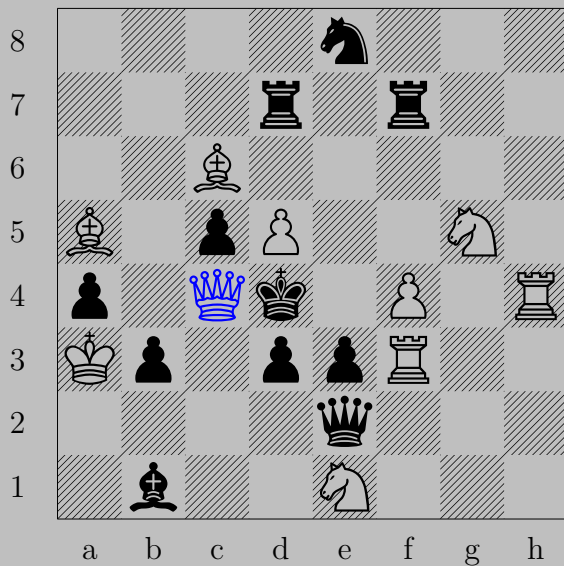
♙×d5+, ♖×d5

♞e6

3642



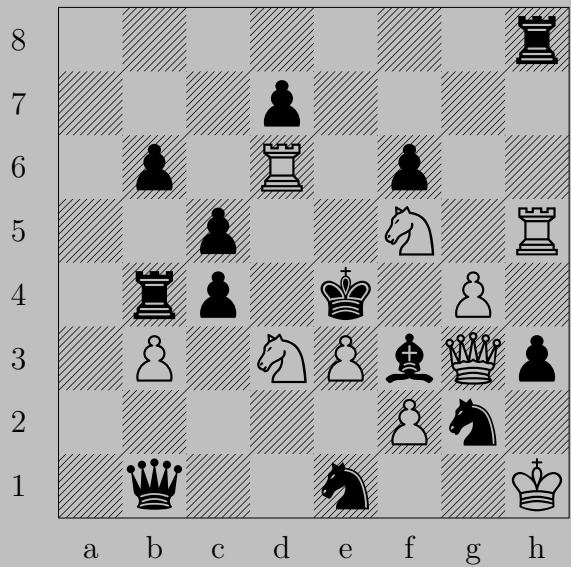
3642



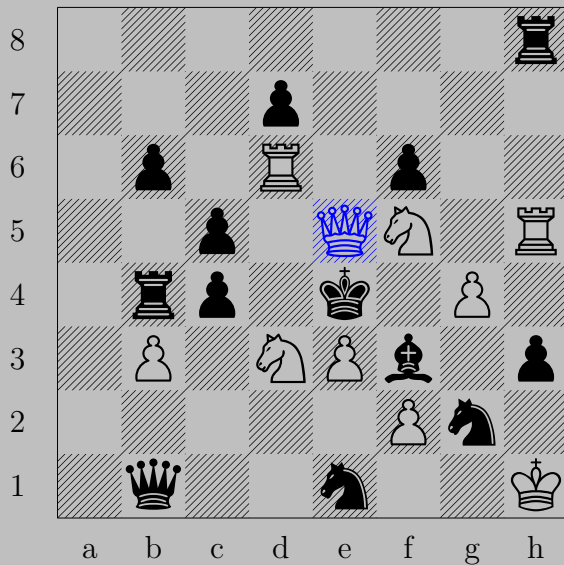
♙c4+, ♚xc4

♞f5

3643

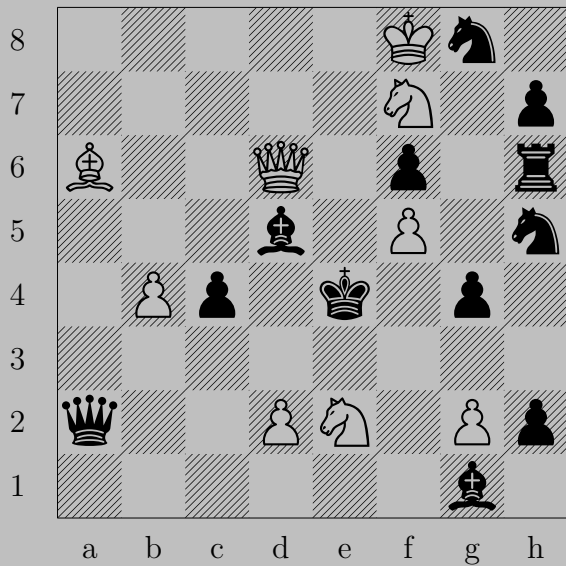


3643

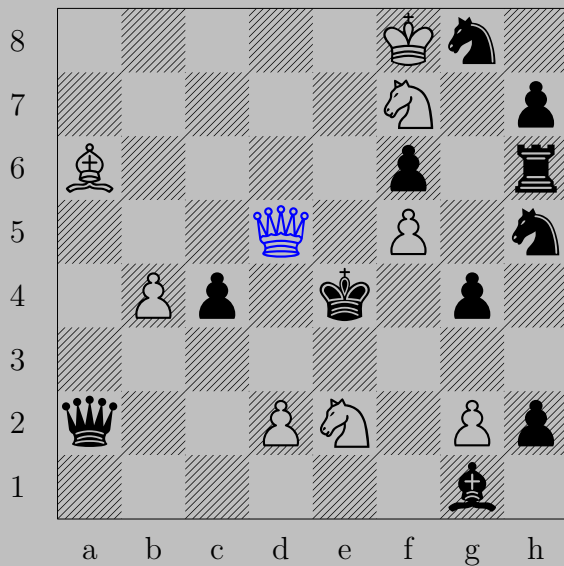


♔e5+, ♕xe5
♞g3

3644



3644



♙×d5+, ♔×d5
♞b7

3645

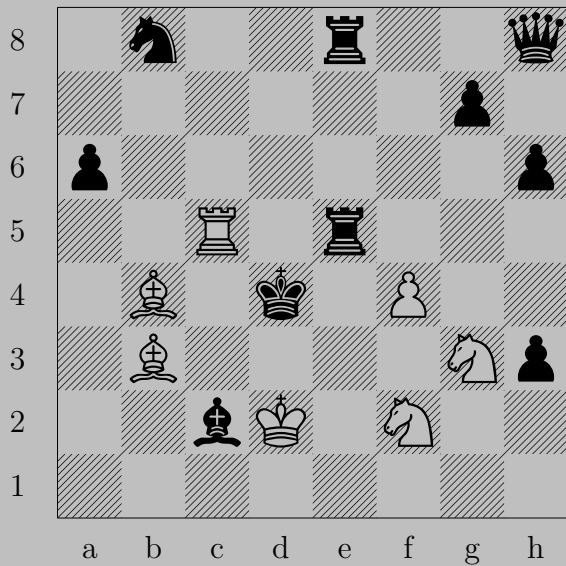


3645



♙xh6+, ♔xh6
♖h8

3646





$\text{N}(f2)e4$

If $\text{R}\times c4$, $\text{Q}\times c4$. If $\text{Q}\times e4$, $\text{N}e2$. If $\text{R}\times e4$, $\text{N}f5$.

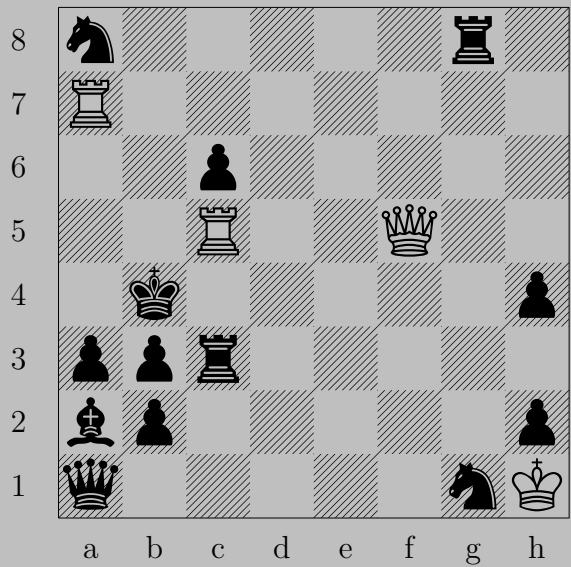
Otherwise, $\text{Q}c3$.

3647

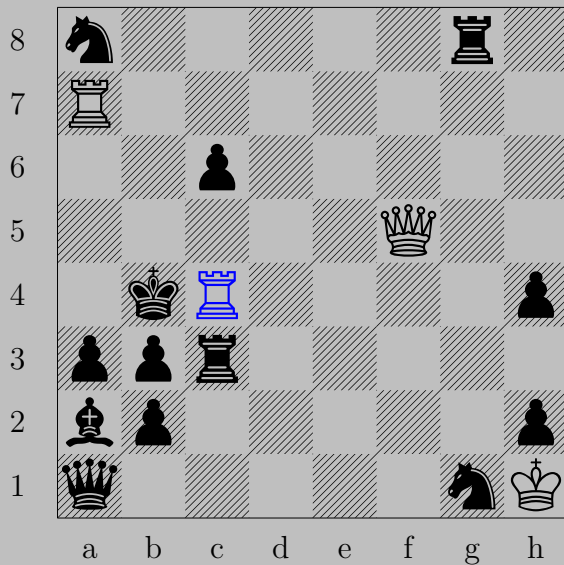


♞f7+, ♔xf7
♞g5

3648



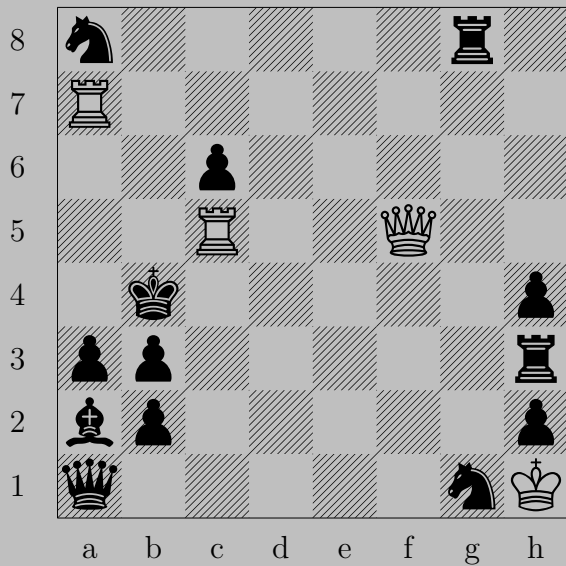
3648



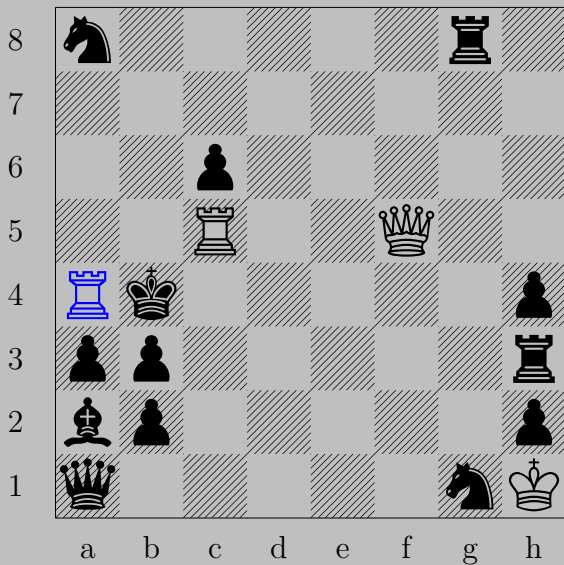
Rc4+

If Rxc4 , Qa5 . If Kxc4 , Ra4 .

3649



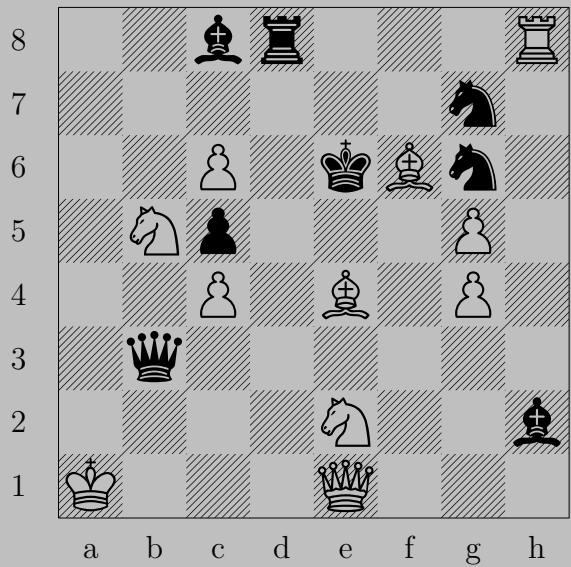
3649



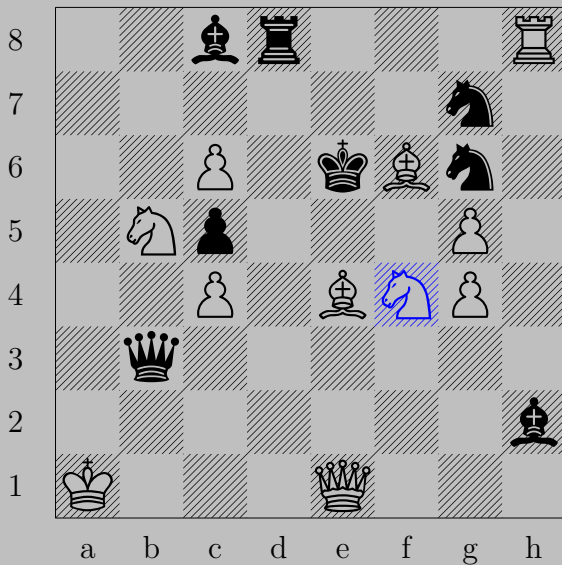
$\text{R}a4+$, $\text{K}xa4$

$\text{Q}e4$

3650



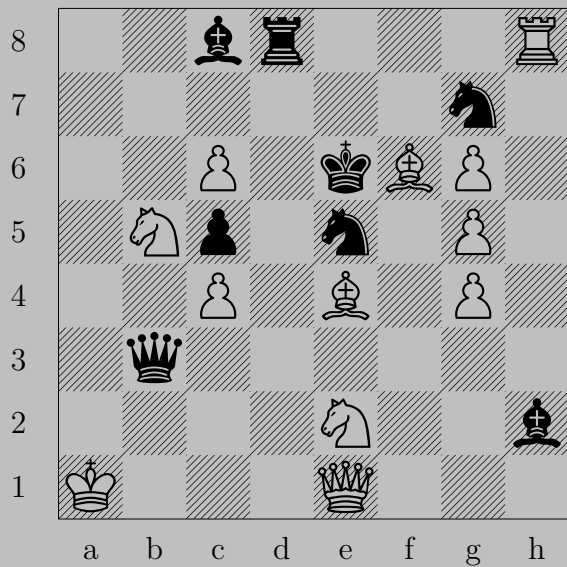
3650



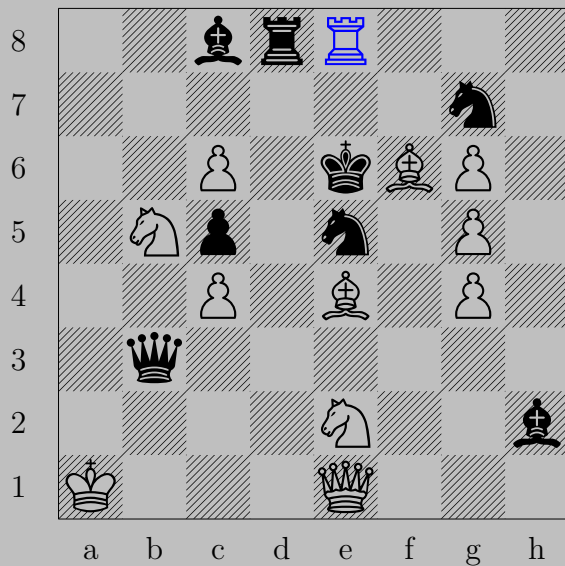
♞f4+

If ♙xf4 or ♞xf4, ♙d5. If ♚f7, ♙xg6.

3651



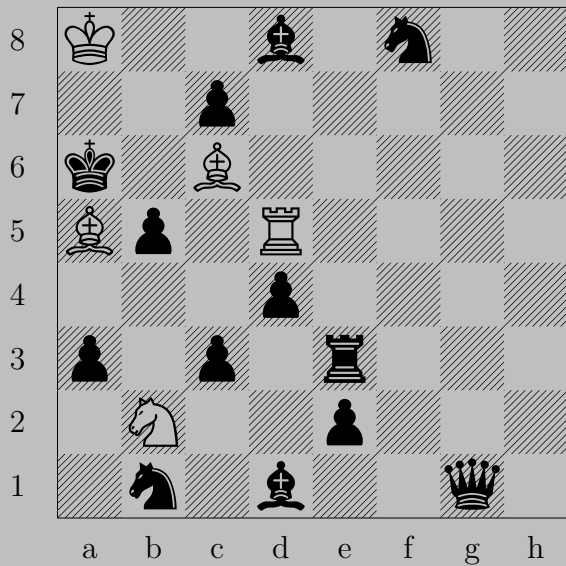
3651



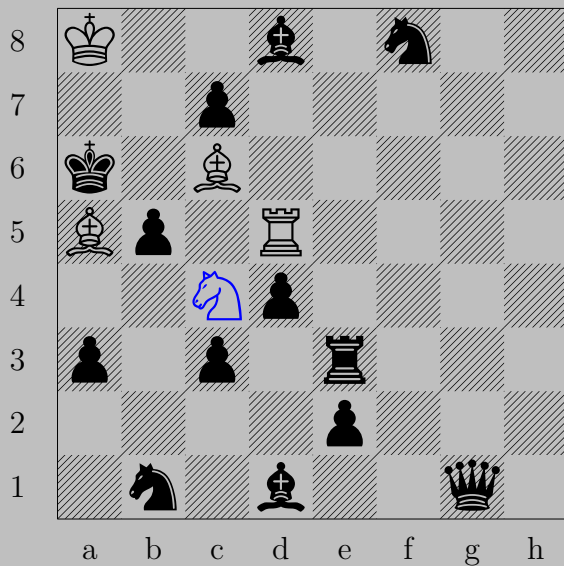
$\text{Re}8+$

If $\text{N}g7 \times e8$, $\text{B}f5$. If $\text{R}d8 \times e8$, $\text{B}d5$.

3652



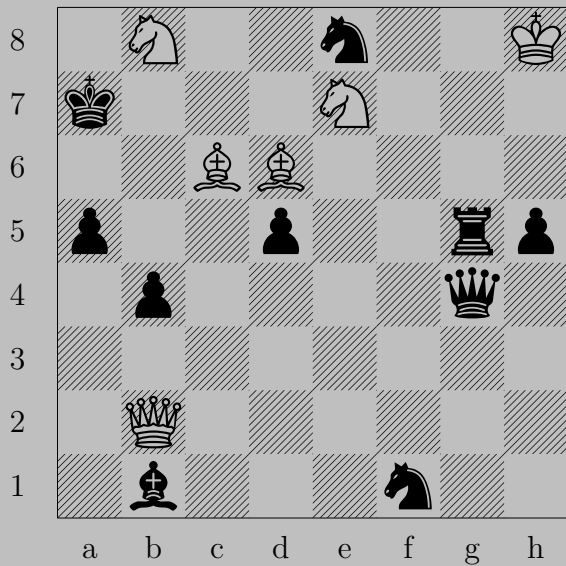
3652



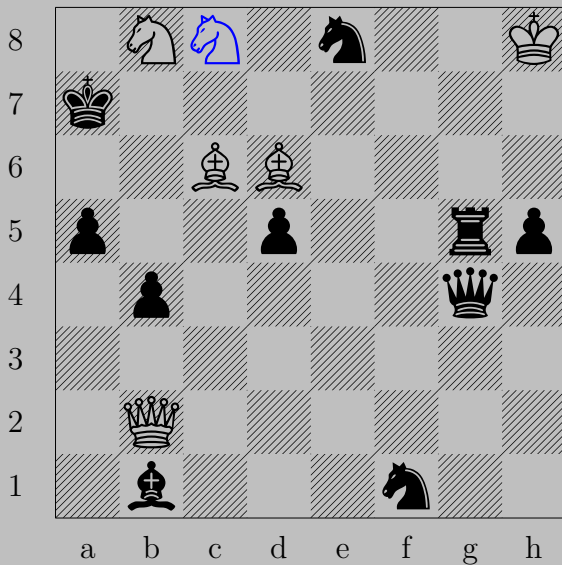
Nc4 , anything

Bb7

3653



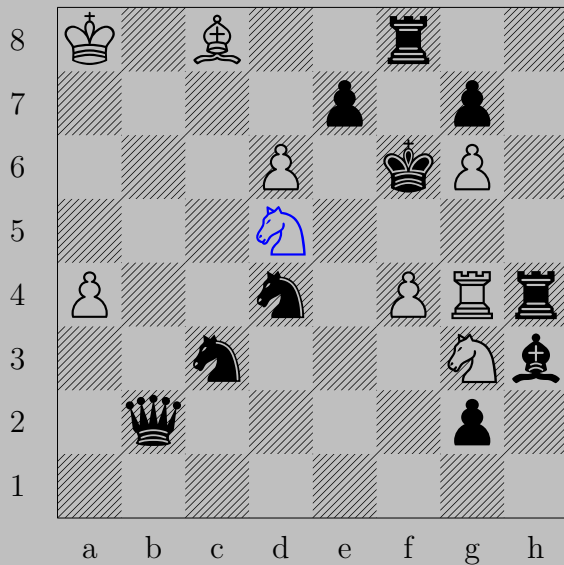
3653



c8+, x8

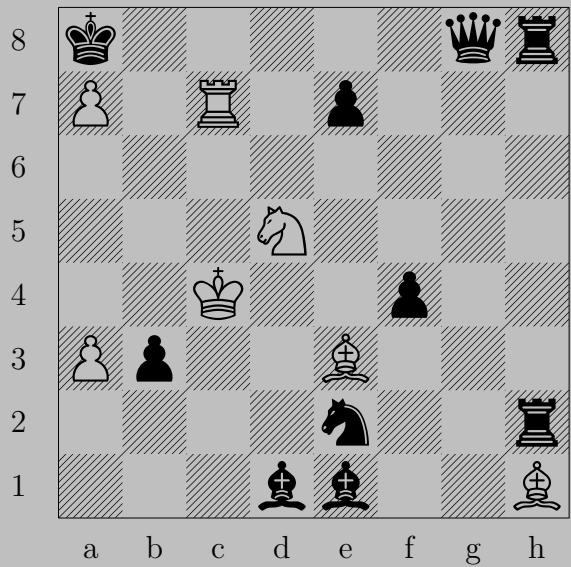
d4

3654

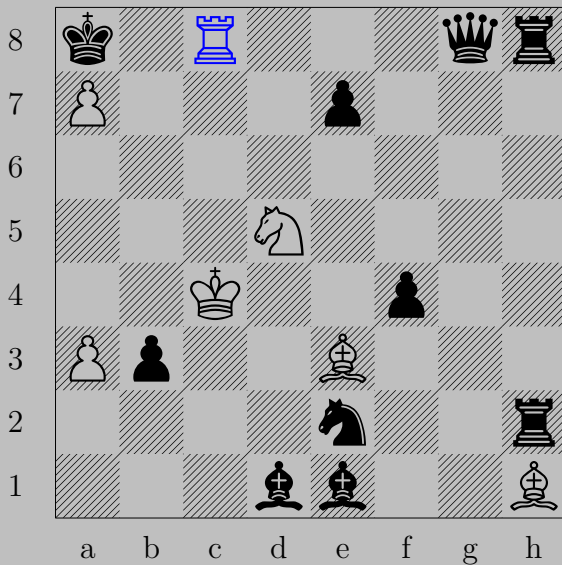


$\text{Nxd5+}, \text{Nxd5}$
 Ne4

3655



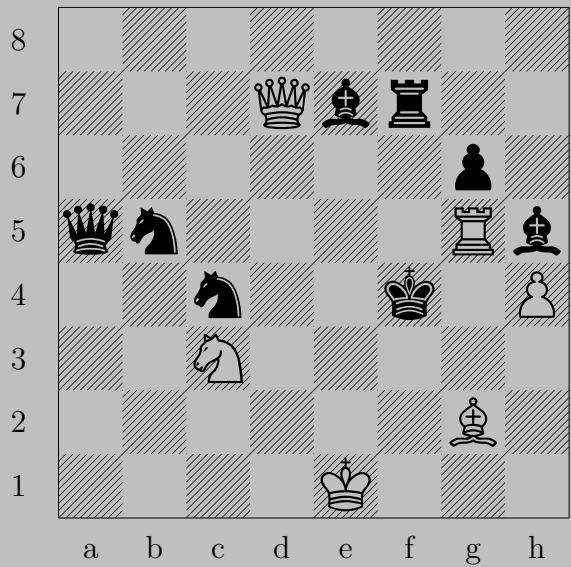
3655



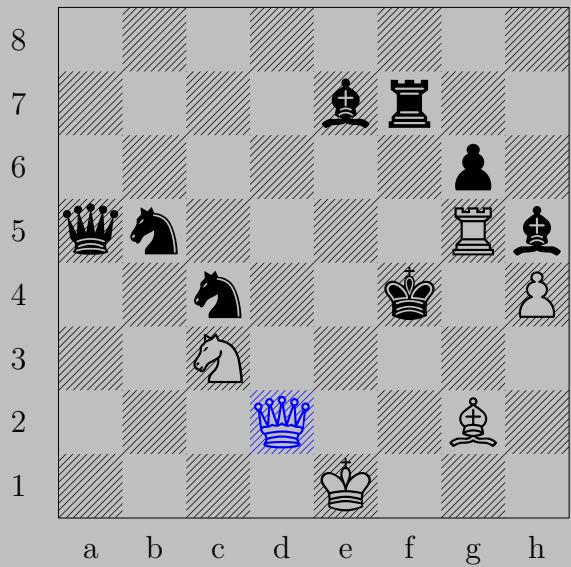
Rc8+

If Kxc8 , Nc7 . If Kb7 , Ba8(K) .

3656

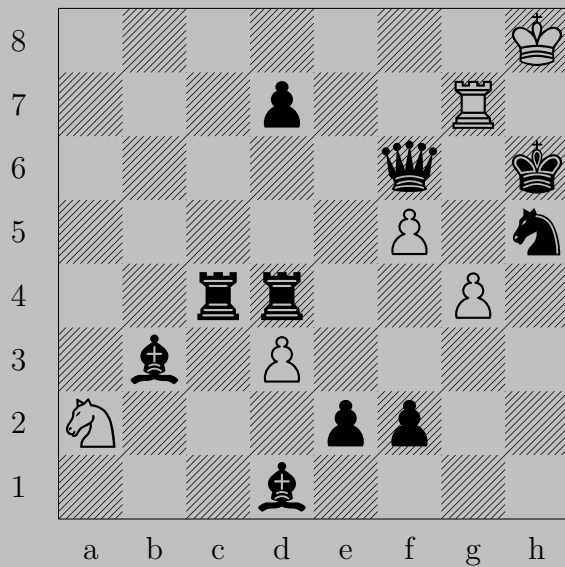


3656

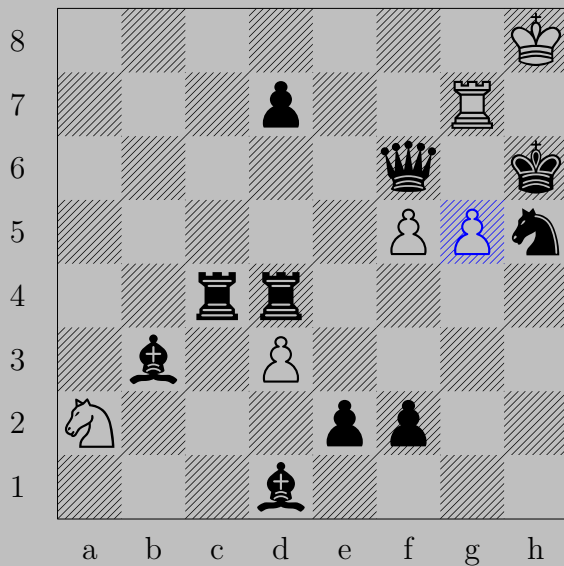


♚d2+, ♞x2
♞d5

3657

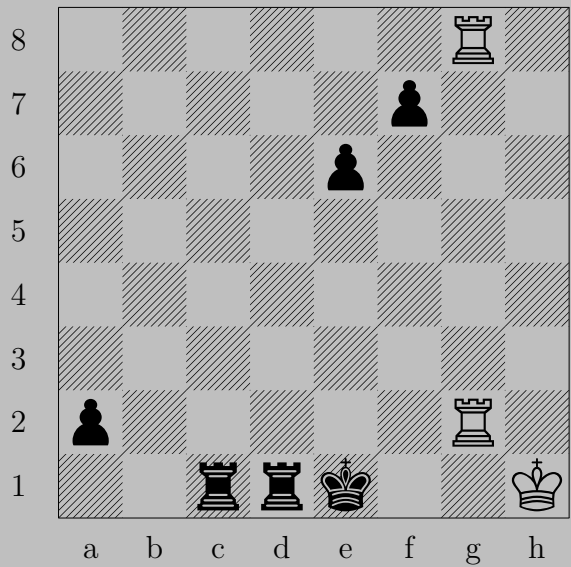


3657

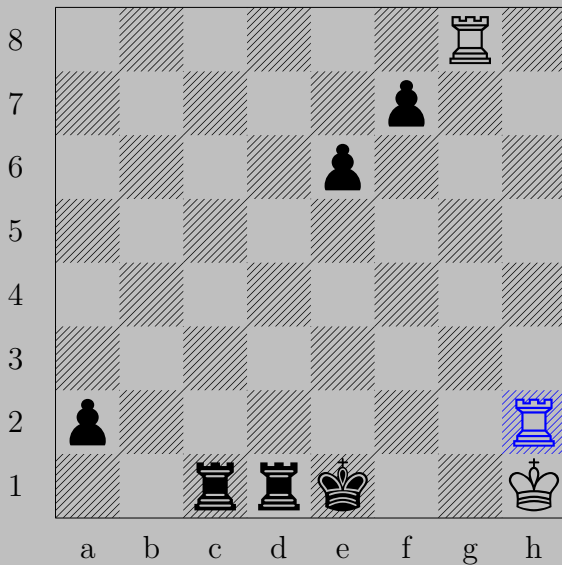


♙g5+, ♚xg5
♖h7

3658



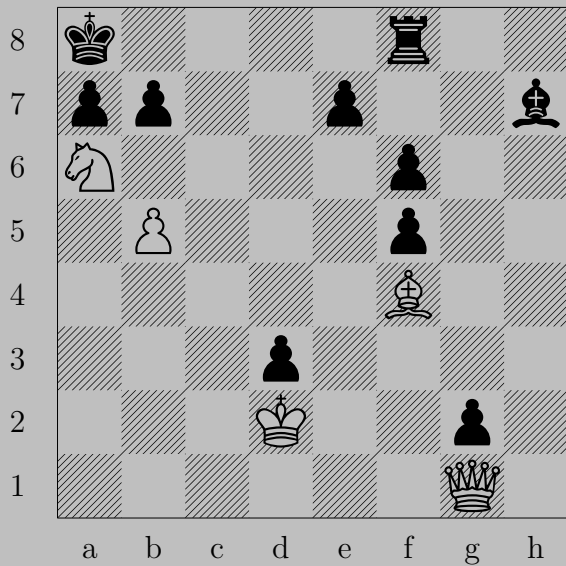
3658



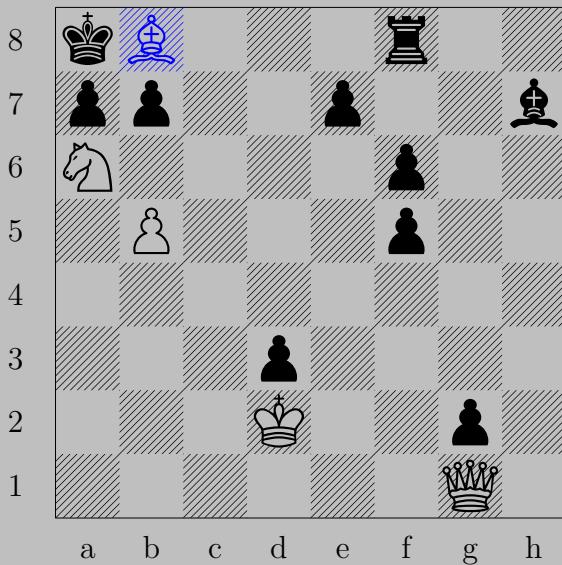
♖h2, anything

♖g1

3659



3659

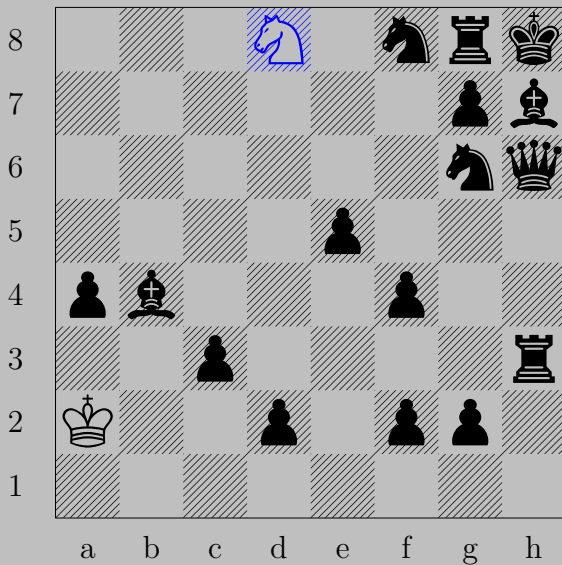


♙b8

If ♖xb8, ♘c7. If ♗b6, ♕xg2.

Otherwise, ♕xa7.

3660



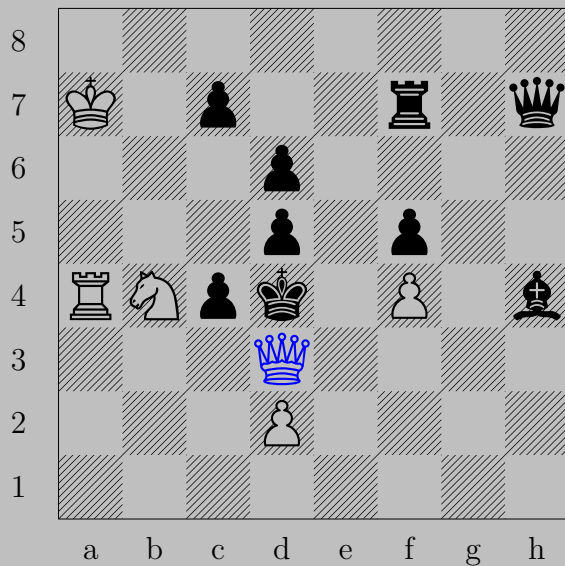
♖d8(♞), anything

♞f7

3661



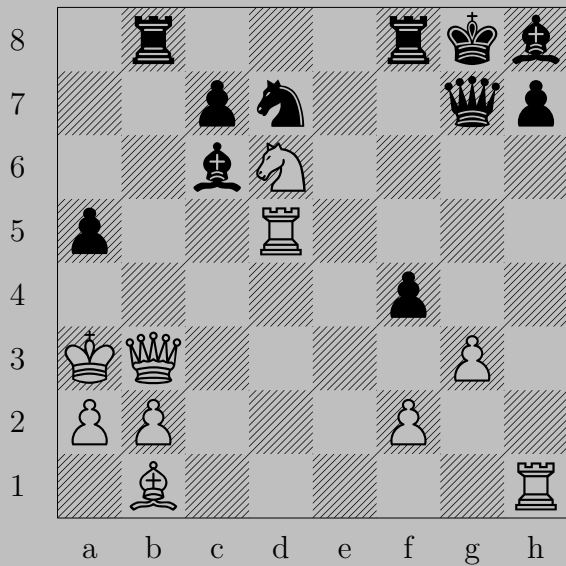
3661



♔d3+

If ♕xd3, ♞a6. If ♔c5, ♚xd5.

3662

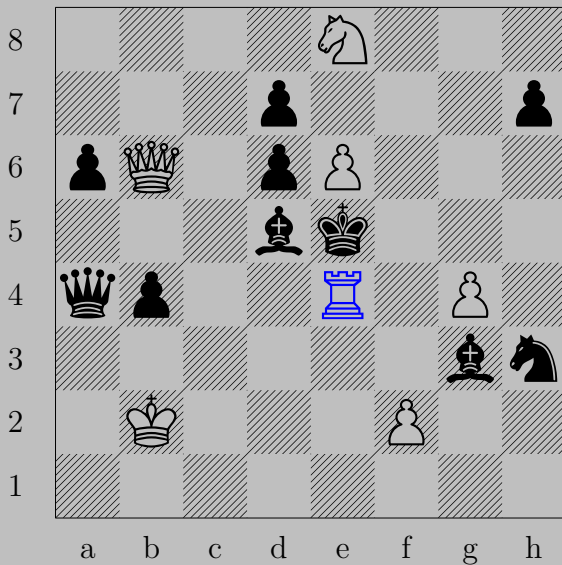


3662



$\text{♞}\times\text{h}7+, \text{♔}\times\text{h}7$
 $\text{♖}\text{g}5$

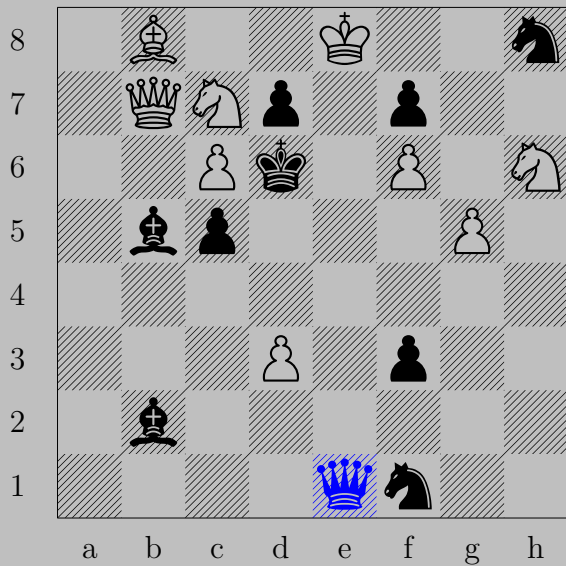
3663



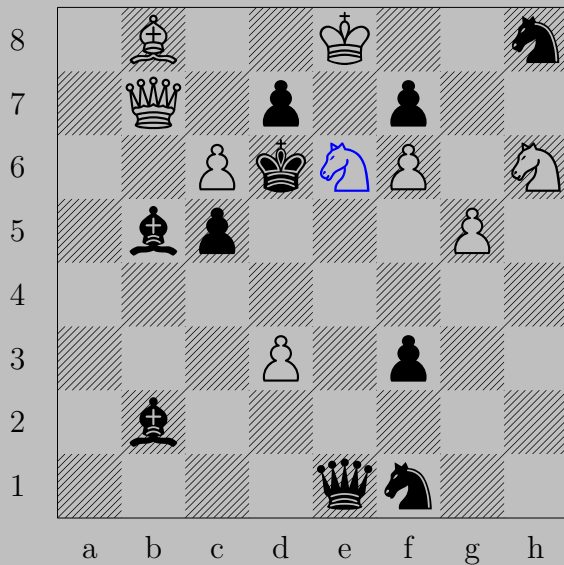
$\text{R}e4+$

If $\text{B}xe4$, $\text{K}xd6$. If $\text{K}xe4$, $\text{K}e3$.

3664



3664

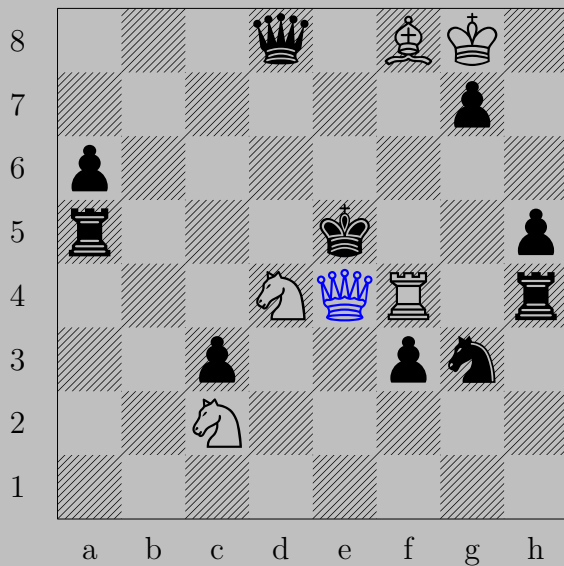


♞e6+, ♚x6 or ♚d5
♚xd7

3665

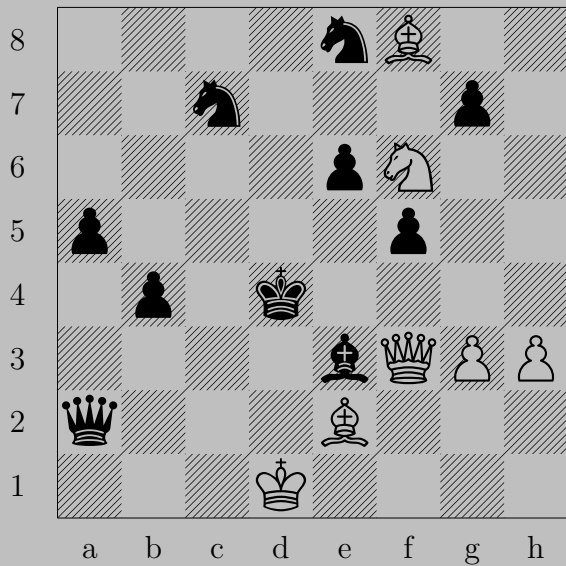


3666

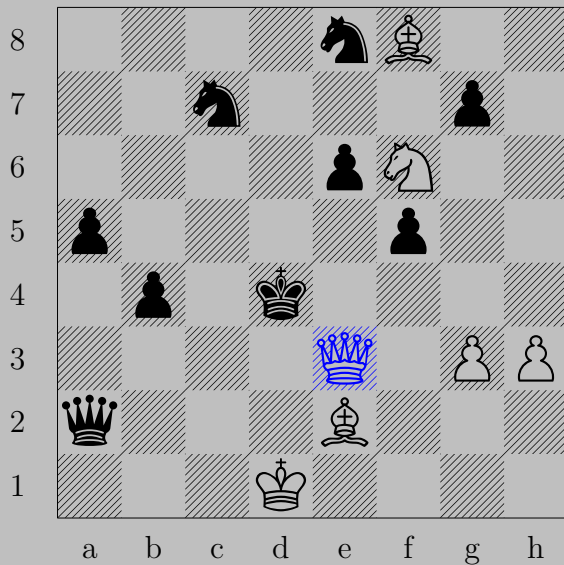


♔e4+, ♘xe4
♖f5

3667



3667



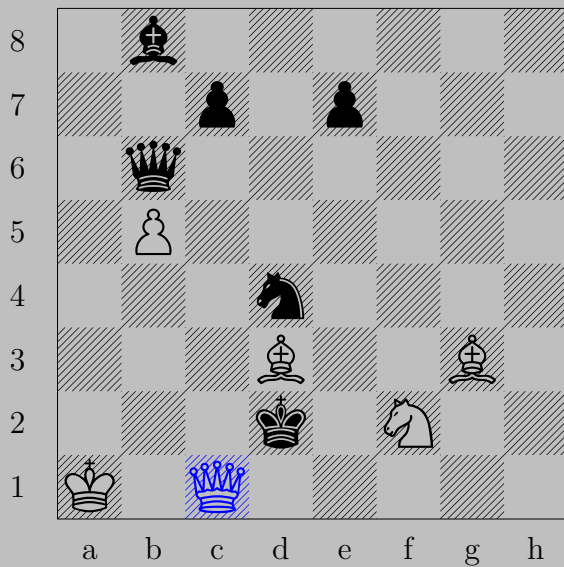
♙×e3+, ♔×e3

♘c5

3668



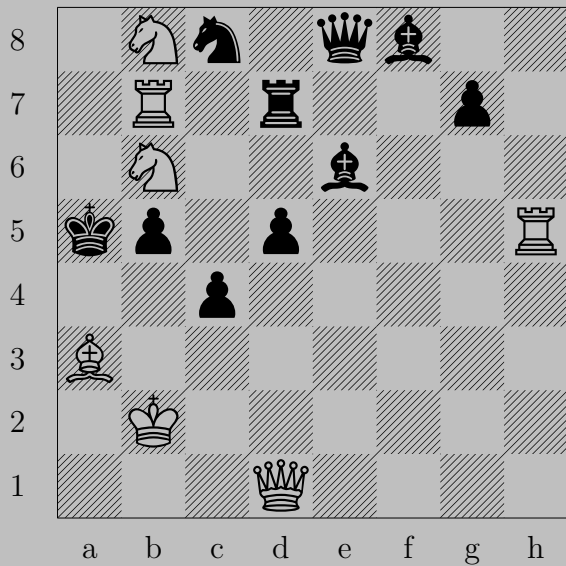
3668



♚c1+, ♚xc1

♙f4

3669



3669



♔a4+, ♖x4

♞xb4

3670



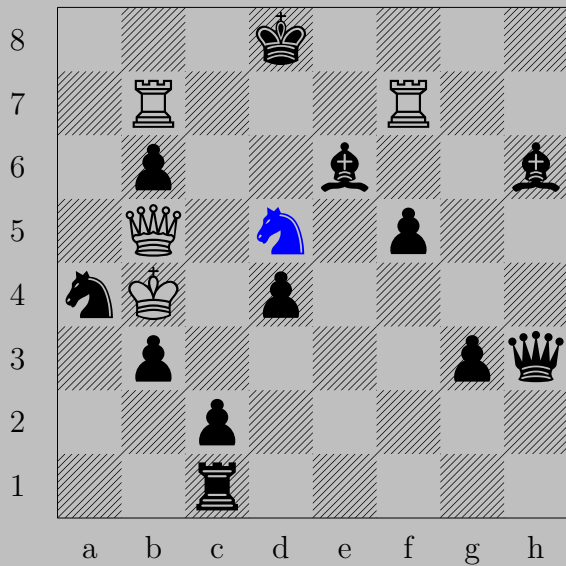
♔×f3+, ♗×f3
♖f4

3671

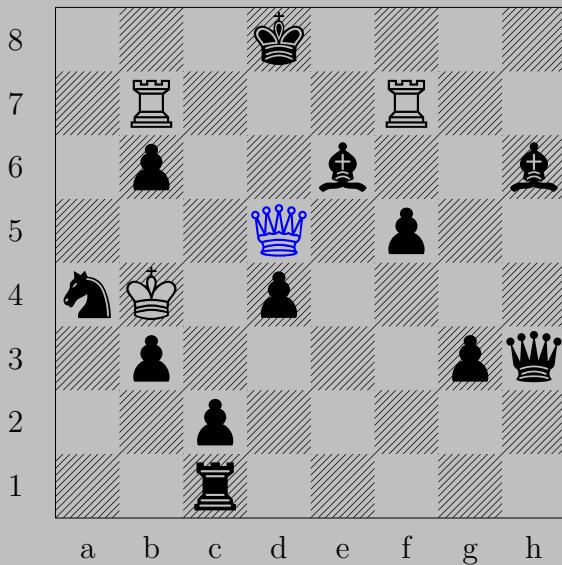


♔f5+, ♙×f5
♞d5

3672



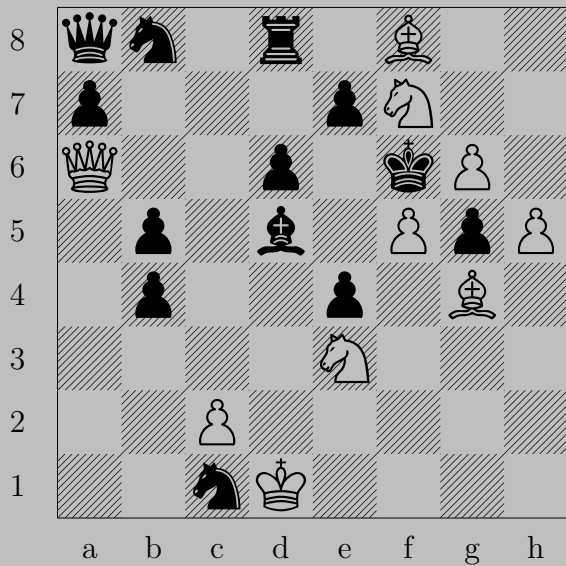
3672



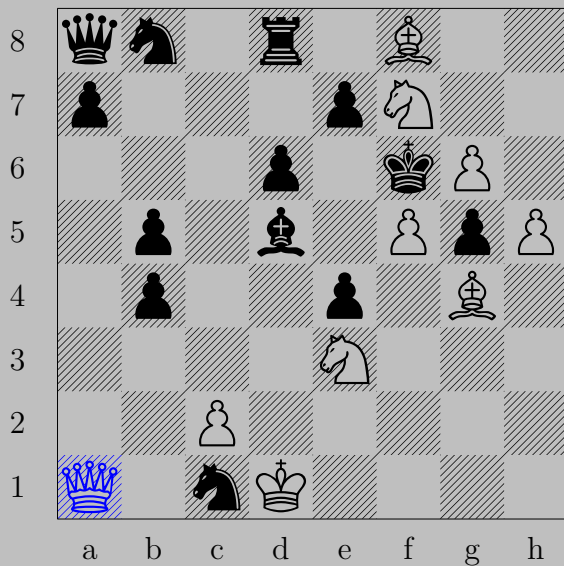
♙×d5+

If ♘×d5, ♖b8. If ♘d7, ♙×d7. If ♚c8, ♖(f7)c7. If ♙e8, ♖(b7)e7.

3673



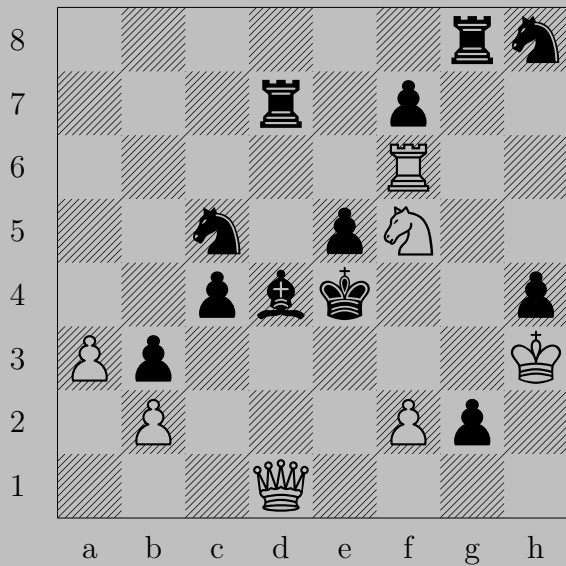
3673



♔a1+, ♟e5

♟x6 *en passant*

3674

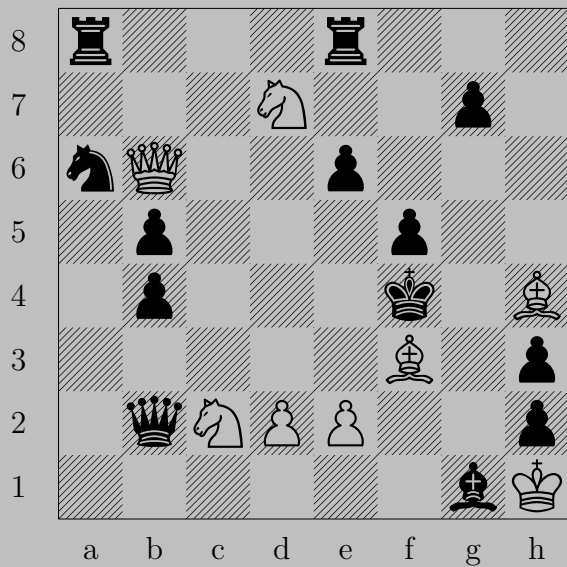


3674

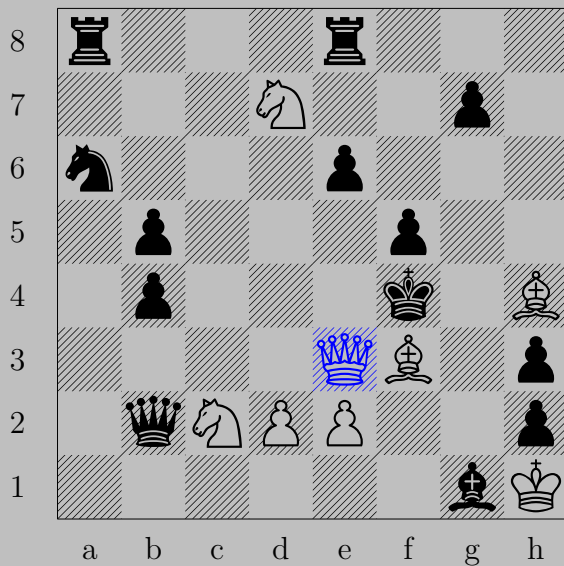


♙f3+, ♚xg3
♘g3

3675

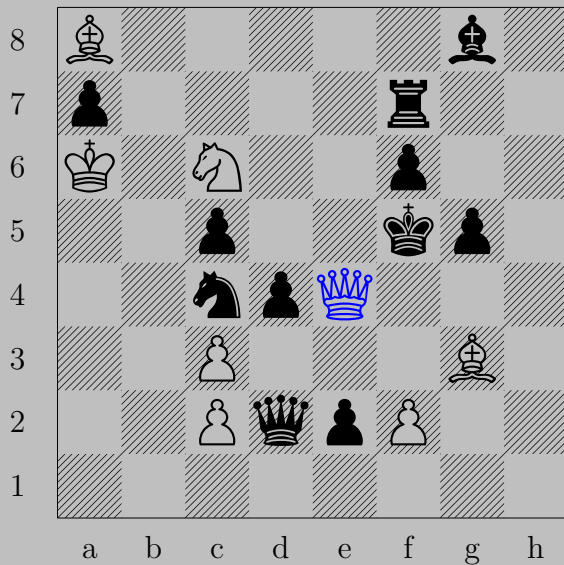


3675



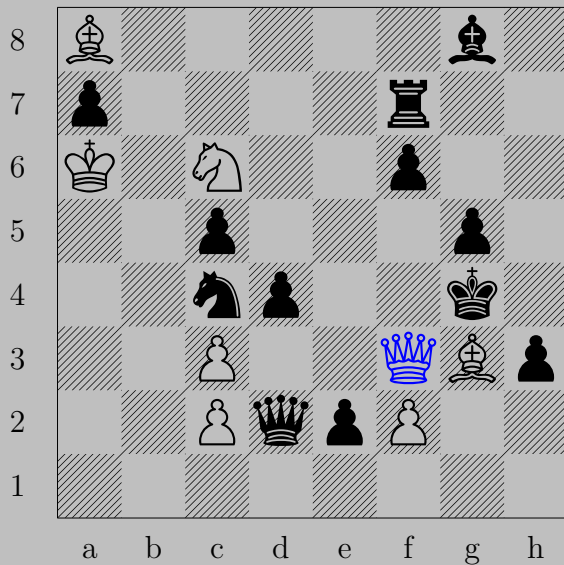
♙e3+, ♖xe3
♗xe3

3676



♔e4+, ♔xe4
♞e7

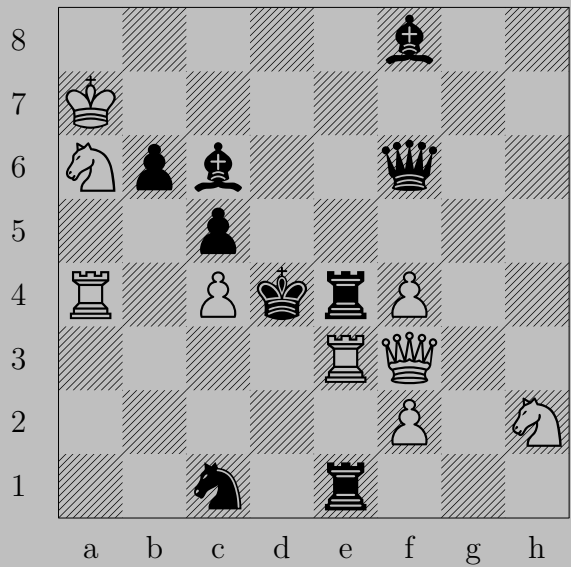
3677



♙f3+, ♚×f3

♞e5

3678



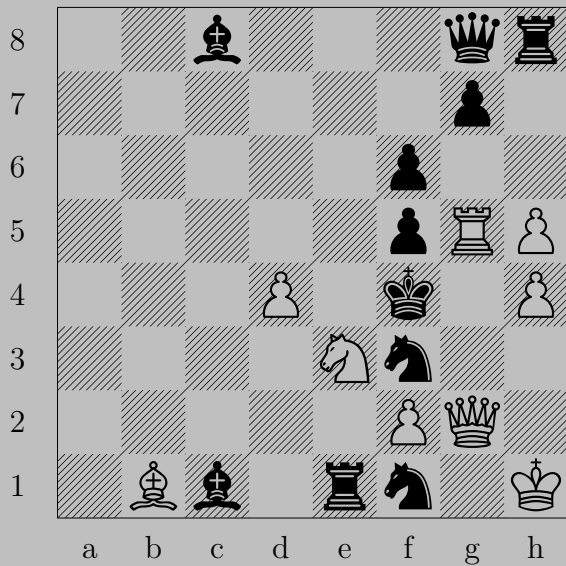
3678



♙d1+

If ♖xd1, ♘f3. If ♘d3, ♙xd3.

3679

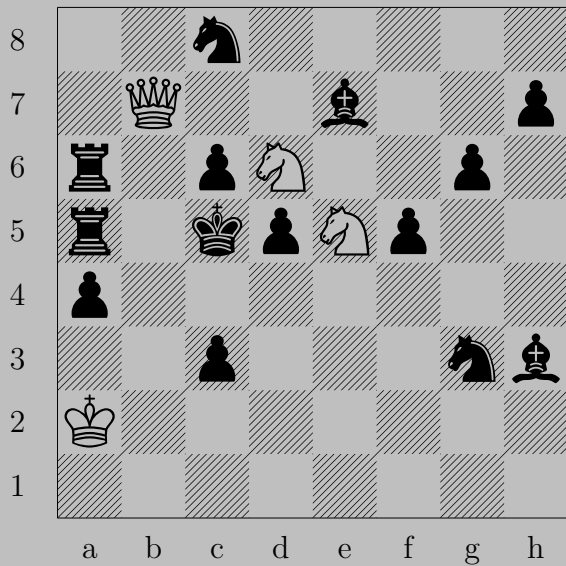


3679

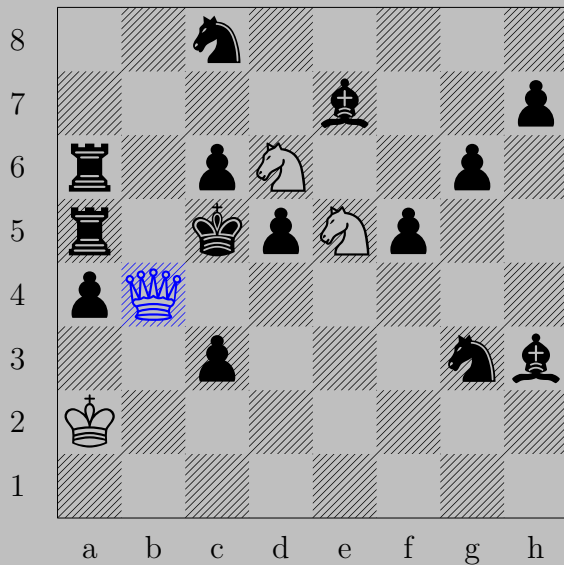


♚g4+, ♙xg4
♞g2

3680

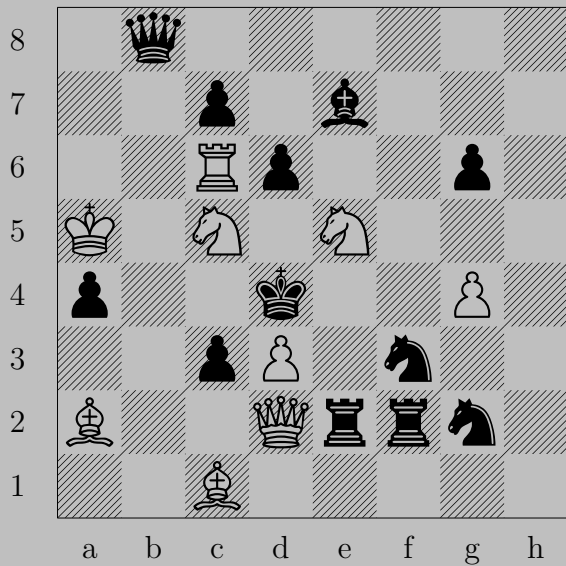


3680

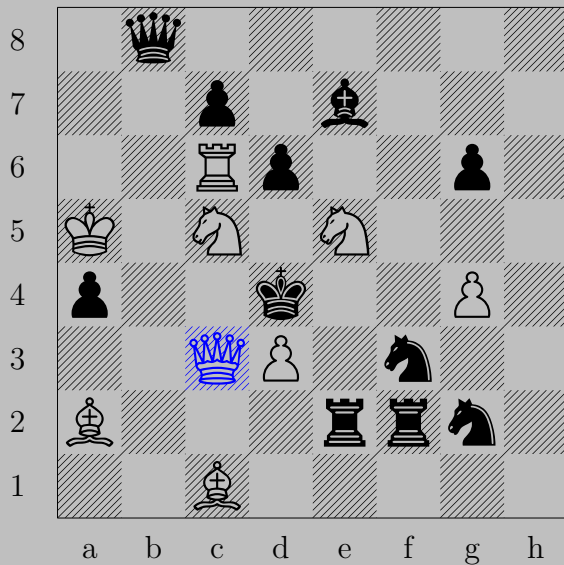


♙b4+, ♚x4
♞d3

3681

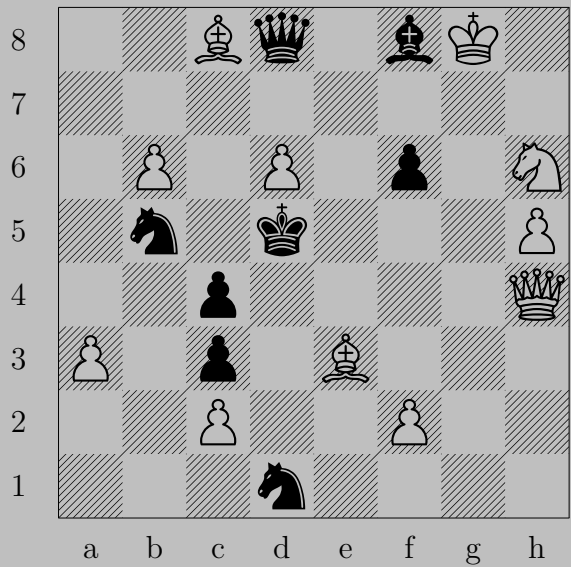


3681



♚xc3+, ♔xc3
♞e6

3682



3682



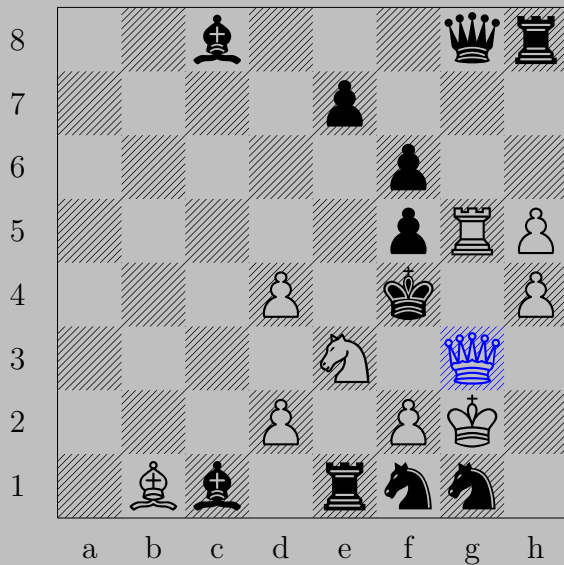
♙xc4+

If ♙xc4, ♙e6. If ♙xd6, ♙c5. If ♙e5, ♙f4.

3683

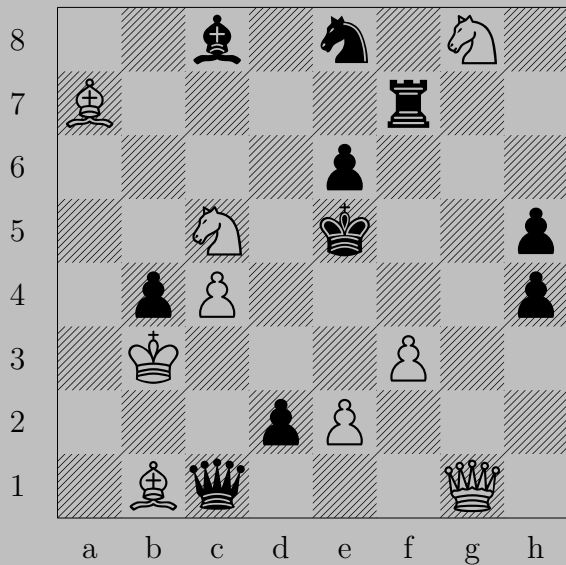


3683

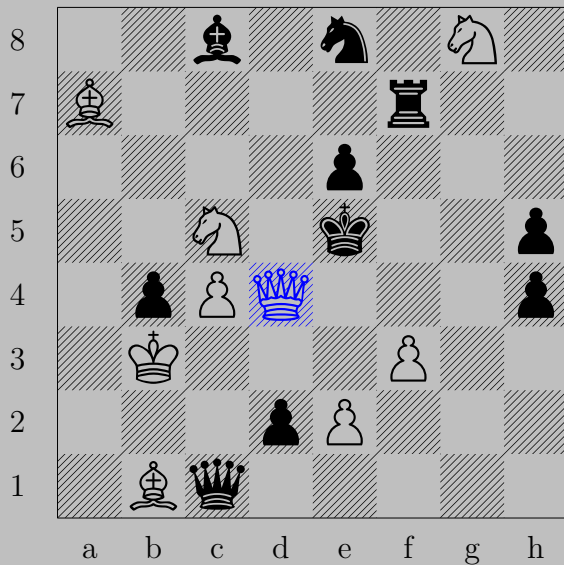


♚g3+, ♞xg3
♙xg3

3684

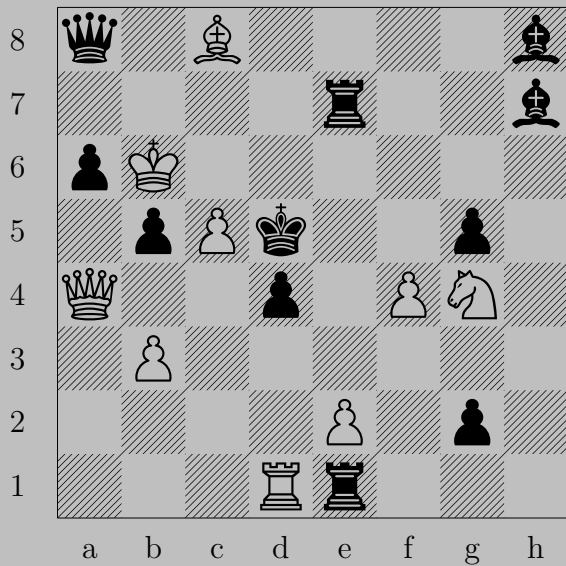


3684

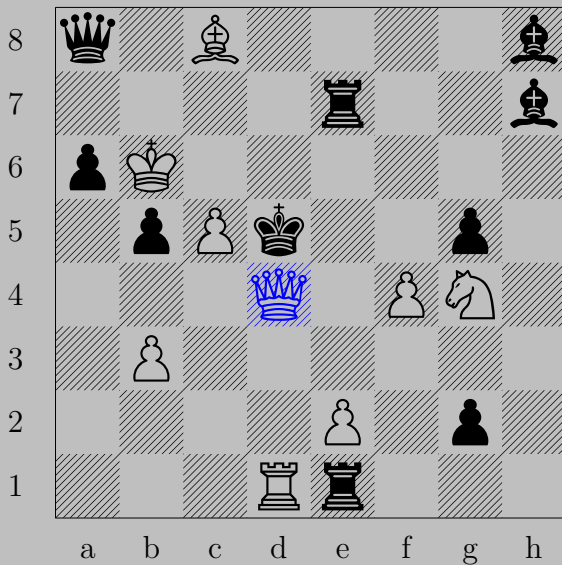


♚d4+, ♙x4d4
♞d7

3685



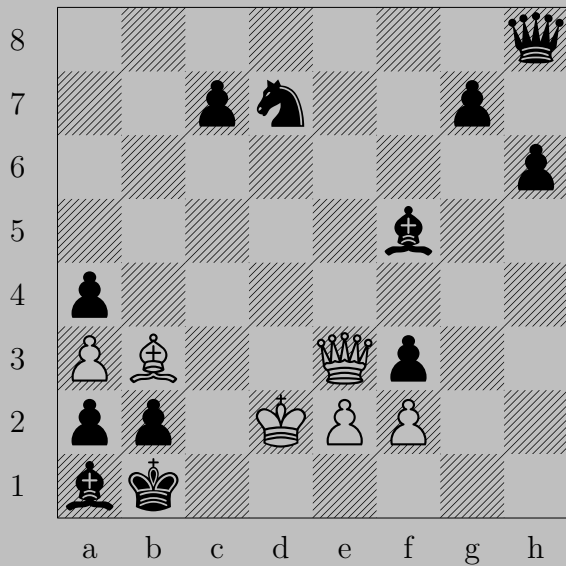
3685

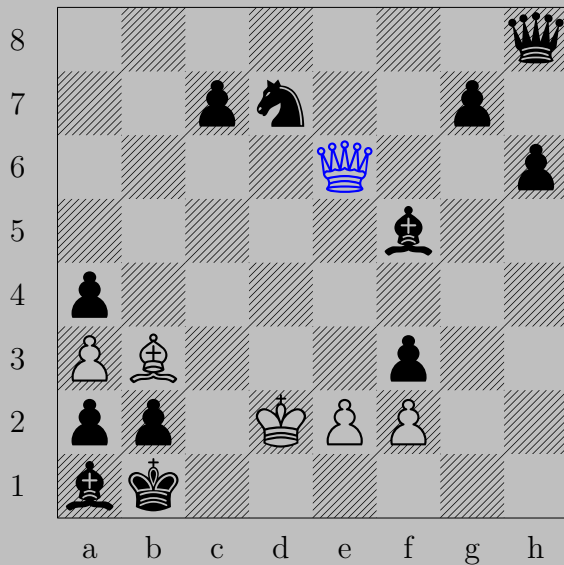


♙×d4+, ♗×d4

♘f6

3686



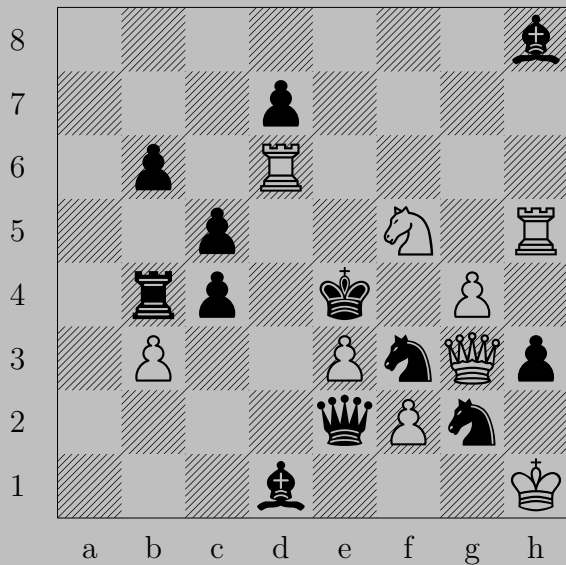


♙e6

If ♜×e6, ♜c2. If ♖×b3, ♙×f5.

Otherwise, ♜×a2.

3687

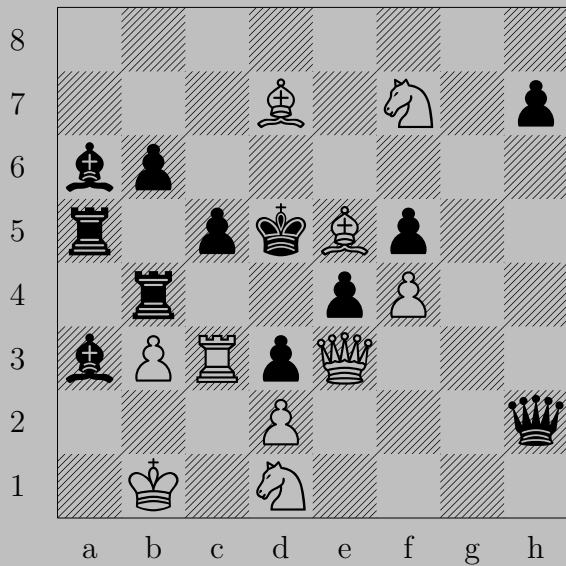


3687

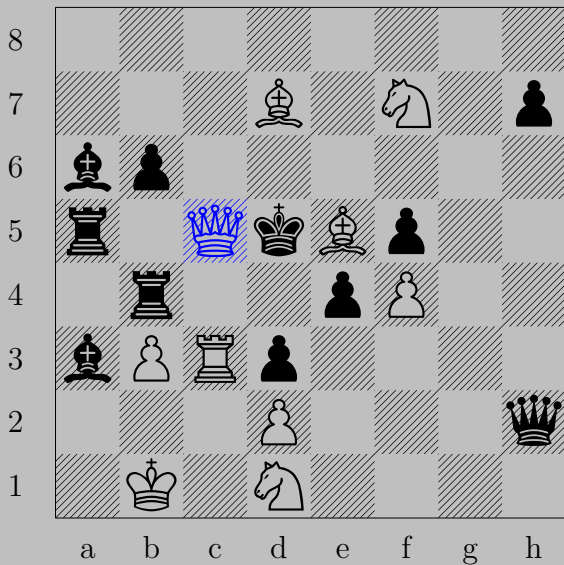


♙f4+, ♘xg3

3688



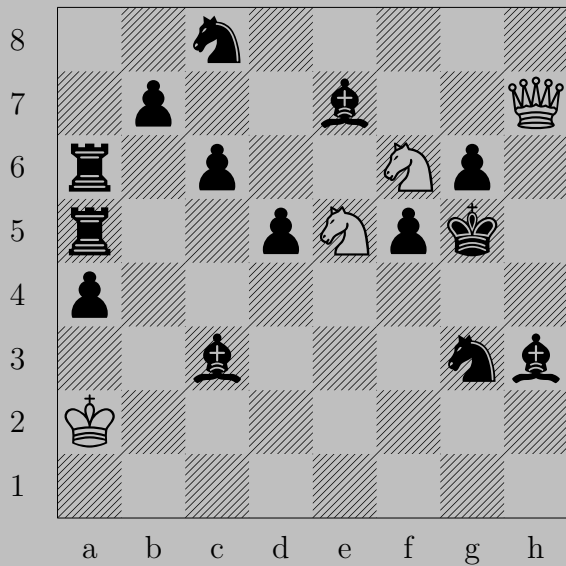
3688



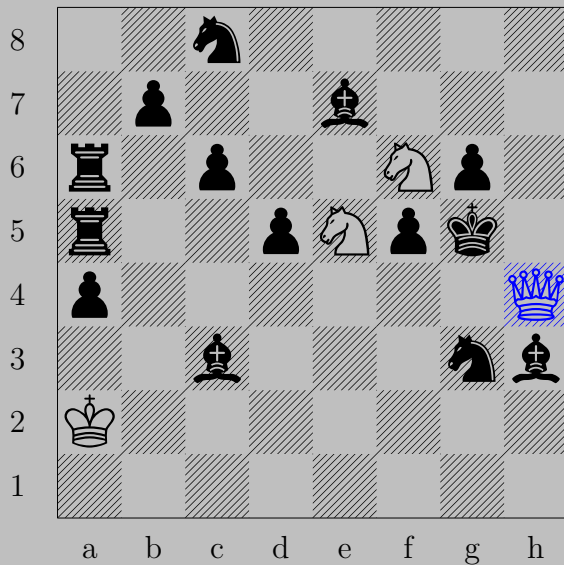
♔xc5+, ♖xc5 or ♖xc5

♞e3

3689

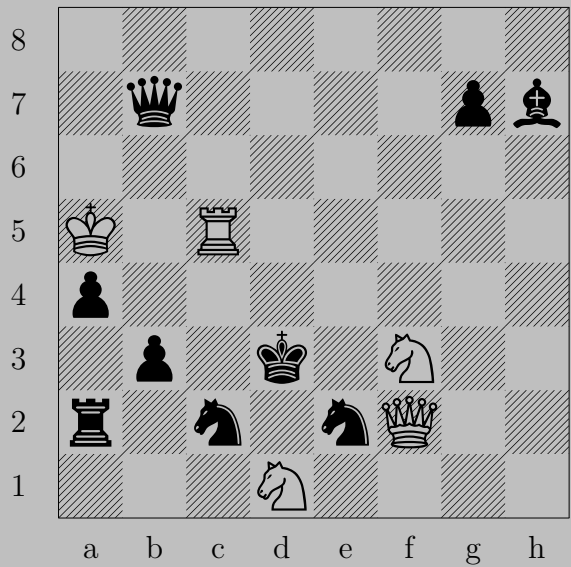


3689

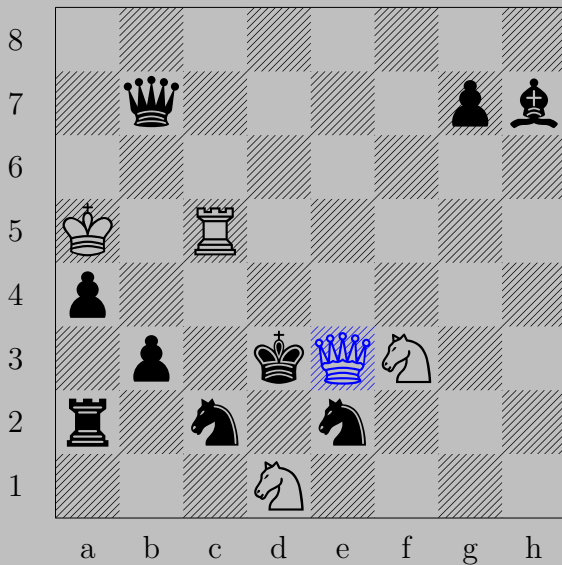


Qh4, Kxh4
Nf3

3690

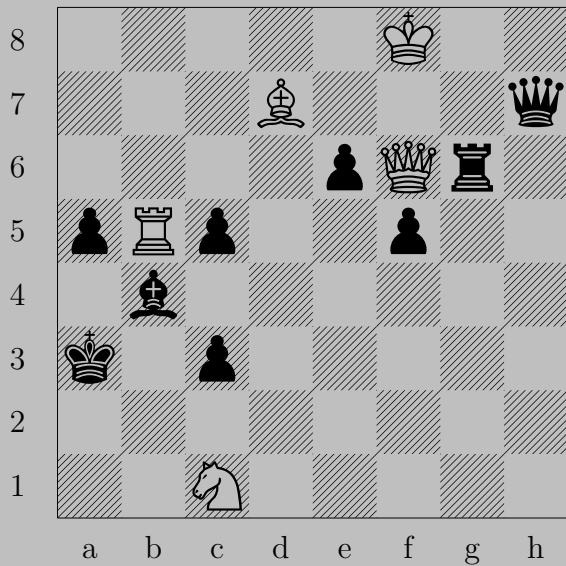


3690

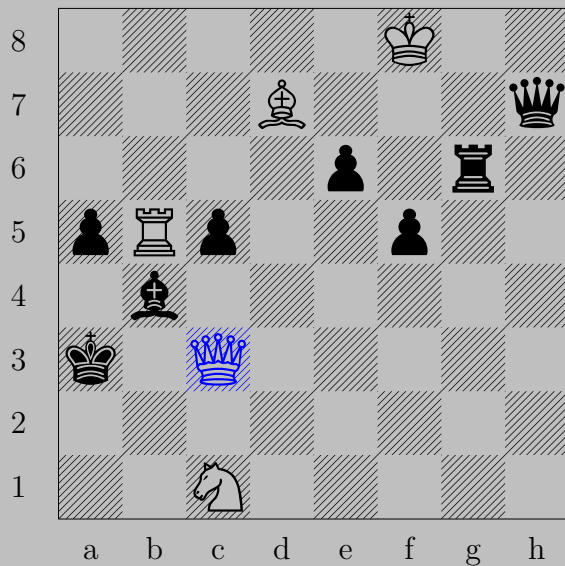


♔e3+, ♞e3
♞f2

3691



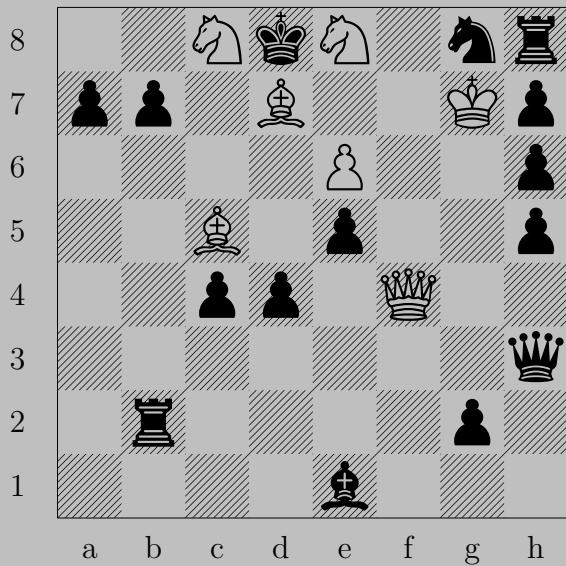
3691



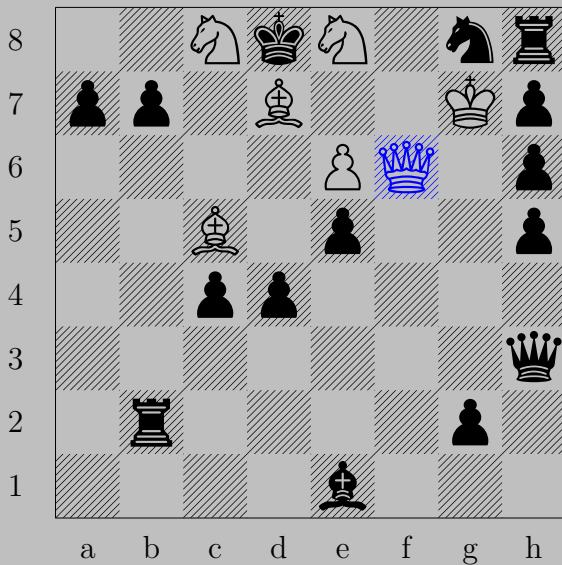
$\text{♔} \times c3+$

If $\text{♗} \times c3$, $\text{♖} b3$. If $\text{♔} a4$, $\text{♖} \times b4$.

3692



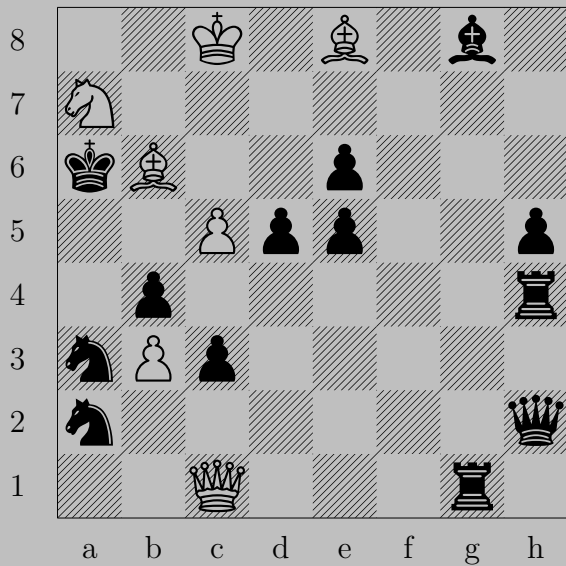
3692



♙f6+

If ♘xf6, ♙e7. If ♘e7, ♙xe7.

3693

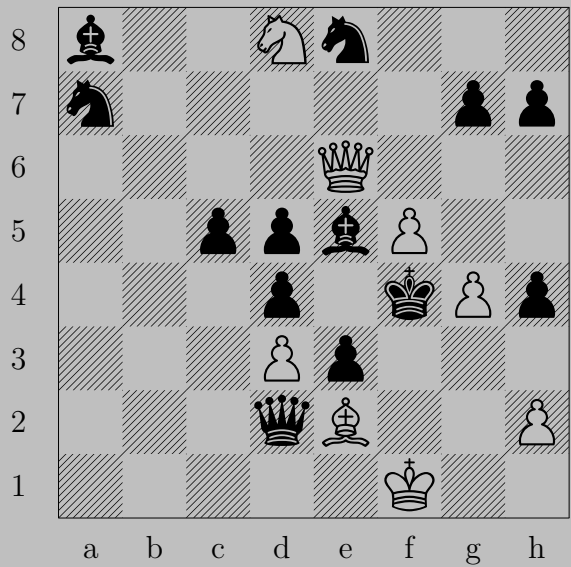


3693

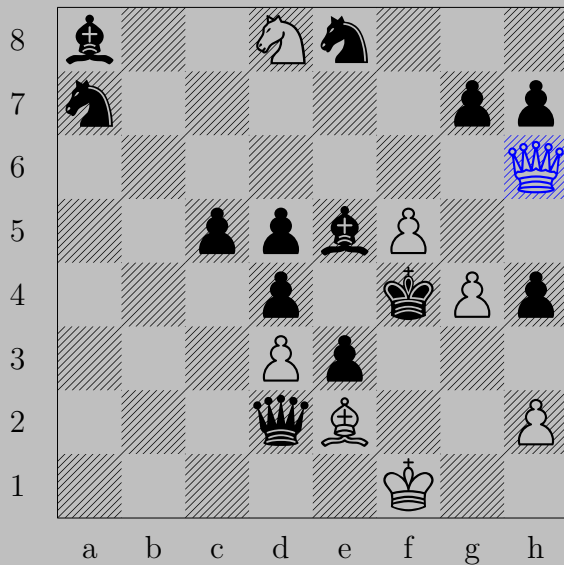


♙×a3+, ♖×a3
♘b5

3694

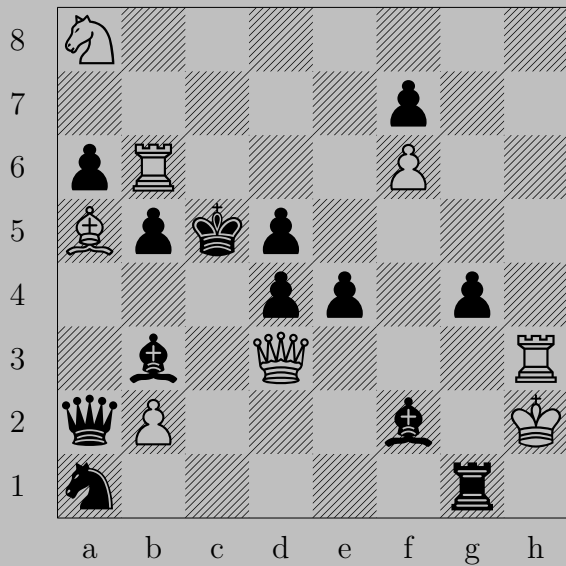


3694

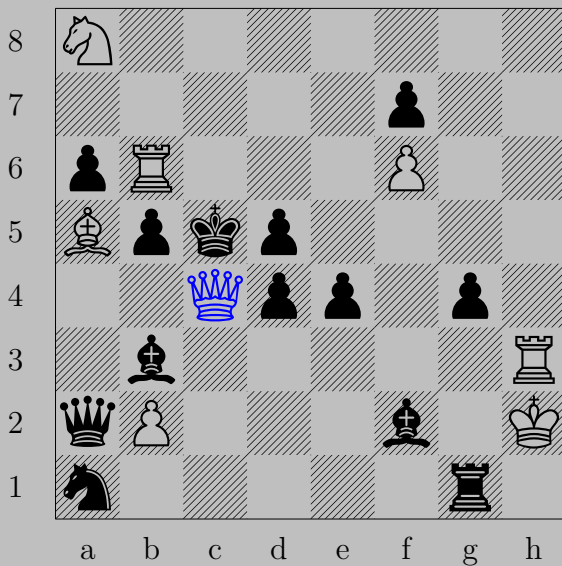


♞h6+, ♙xh6 or ♙g5
♞e6

3695



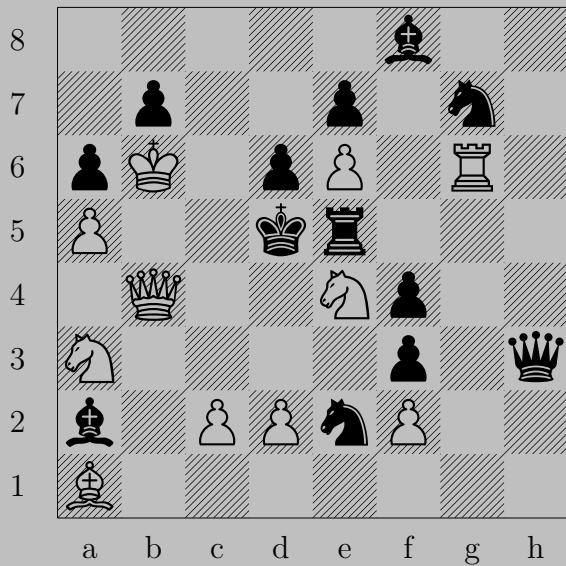
3695



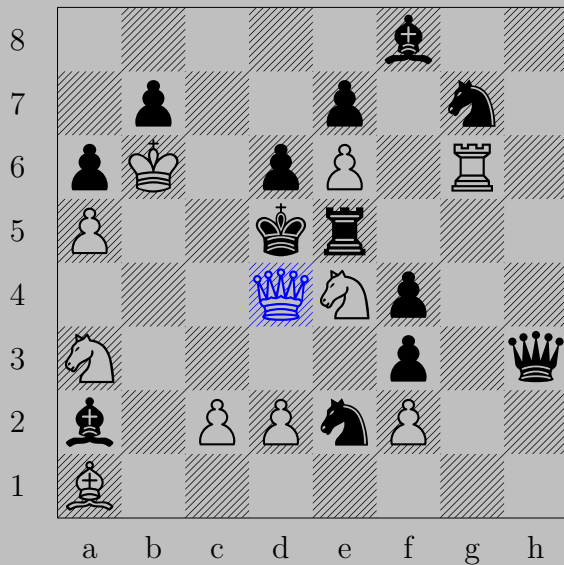
♔c4+

If ♙xc4, ♜b4. If ♜(b5)xc4, ♙b4. If ♜(d5)xc4, ♖h5. If ♙xc4, ♖c6.

3696

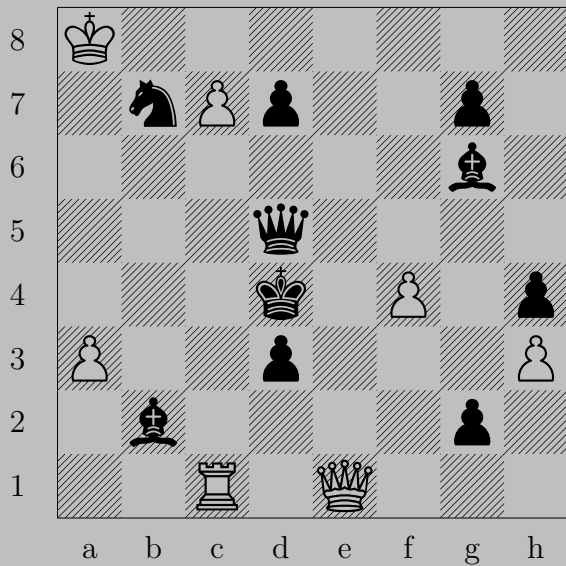


3696

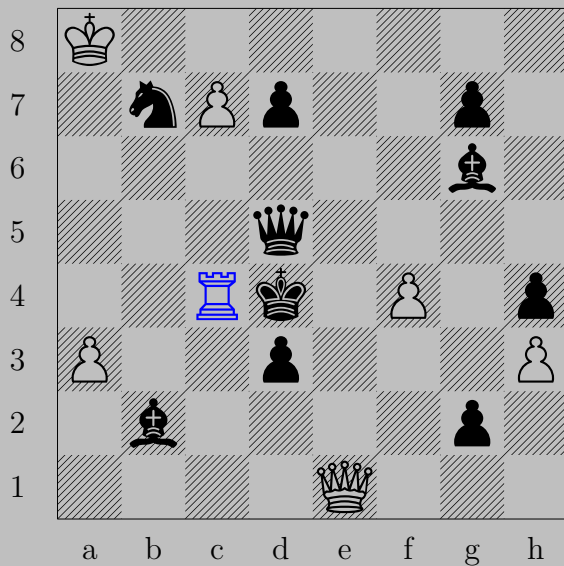


♙d4+, ♘xd4
♘c3

3697



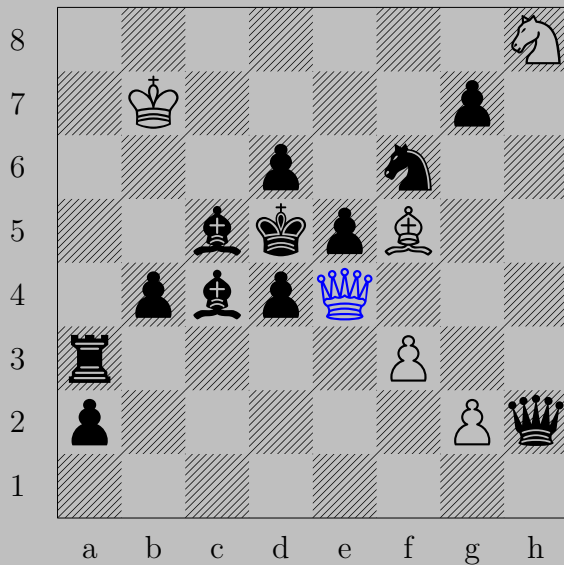
3697



Rc4+

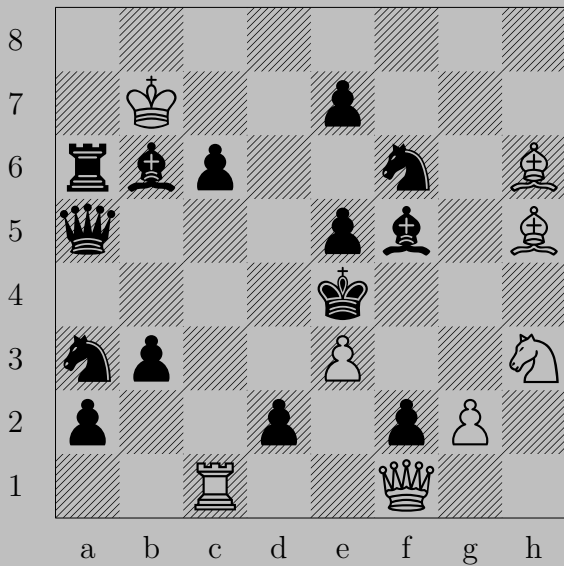
If Kxc4 , Ke5 . If Kxc4 , Kb4 .

3698



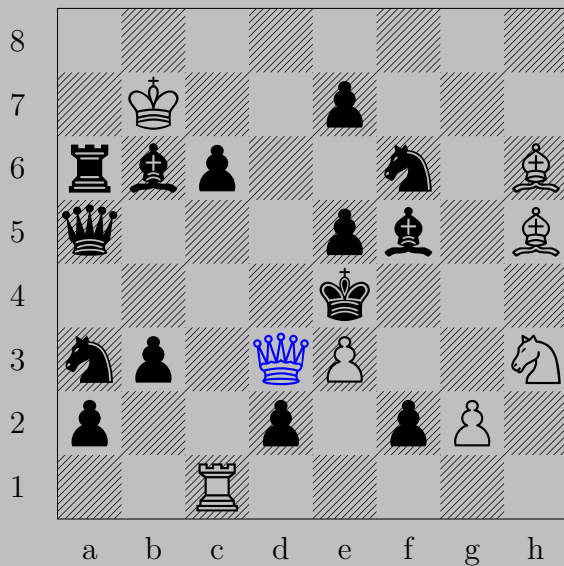
♙e4+, ♖xe4
♗xe4

3699



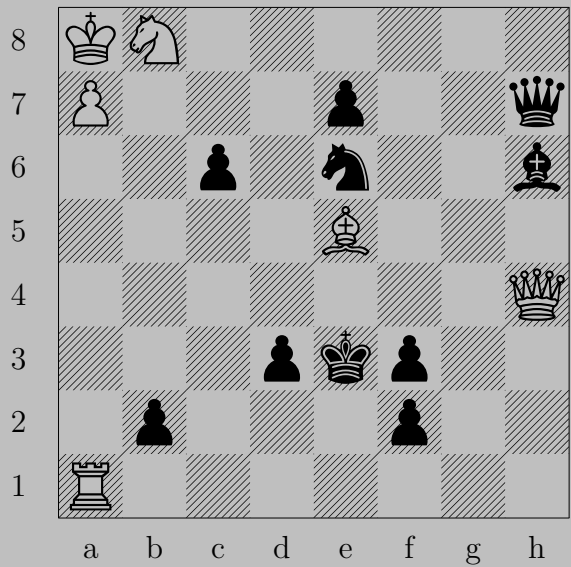
Modified

3699

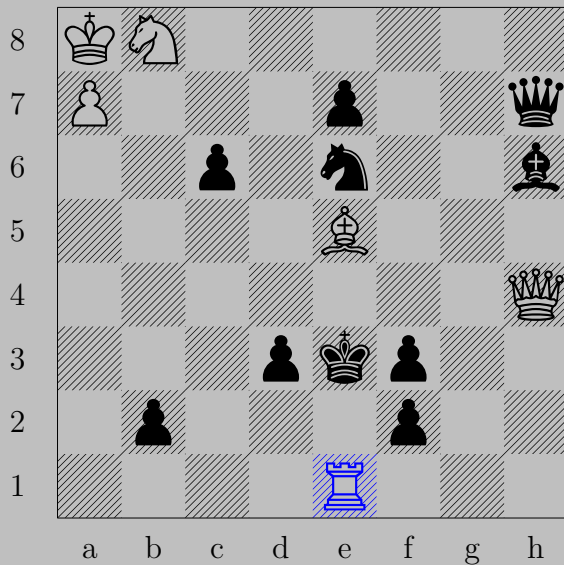


♚d3+, ♔xd3
♞xf2

3700



3700



$\text{R}e1+$

If $\text{P}xe1$, $\text{Q}xe1$. If $\text{K}d2$, $\text{Q}xf2$.