

Chess Puzzles

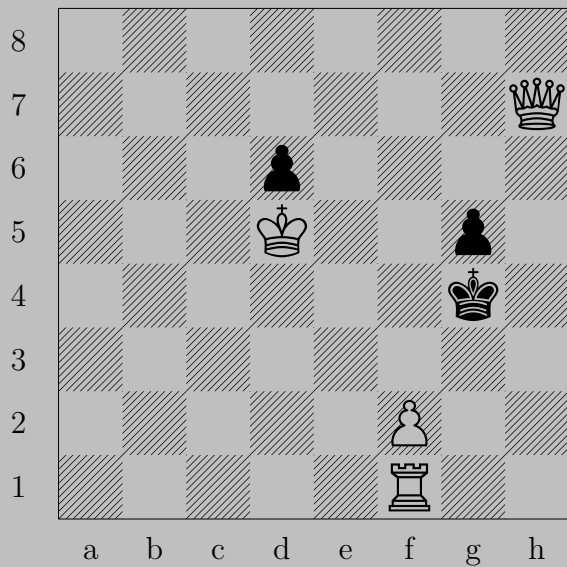
401-500

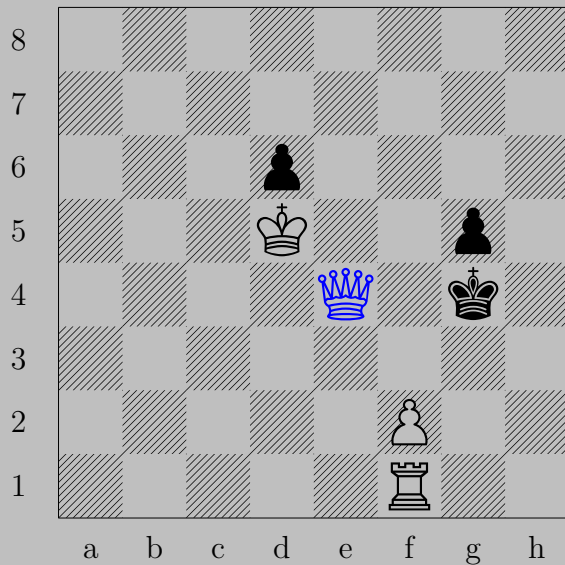
Mate in Two
White to Move

László Polgár

Links

401	402	403	404	405	406	407	408	409	410
411	412	413	414	415	416	417	418	419	420
421	422	423	424	425	426	427	428	429	430
431	432	433	434	435	436	437	438	439	440
441	442	443	444	445	446	447	448	449	450
451	452	453	454	455	456	457	458	459	460
461	462	463	464	465	466	467	468	469	470
471	472	473	474	475	476	477	478	479	480
481	482	483	484	485	486	487	488	489	490
491	492	493	494	495	496	497	498	499	500





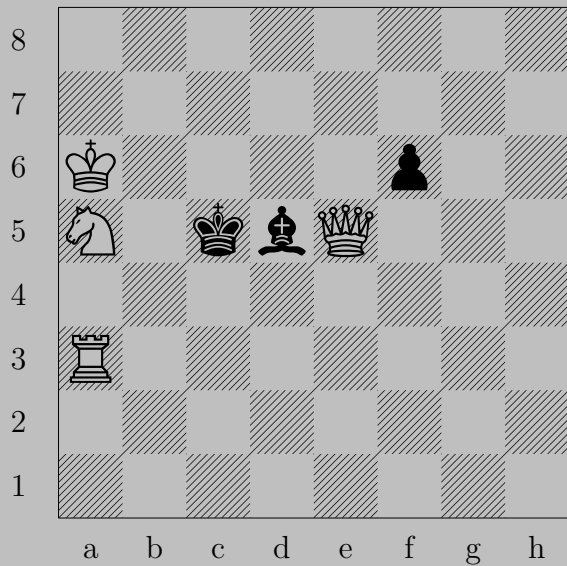
♙e4+, ♚h5 or ♚h3

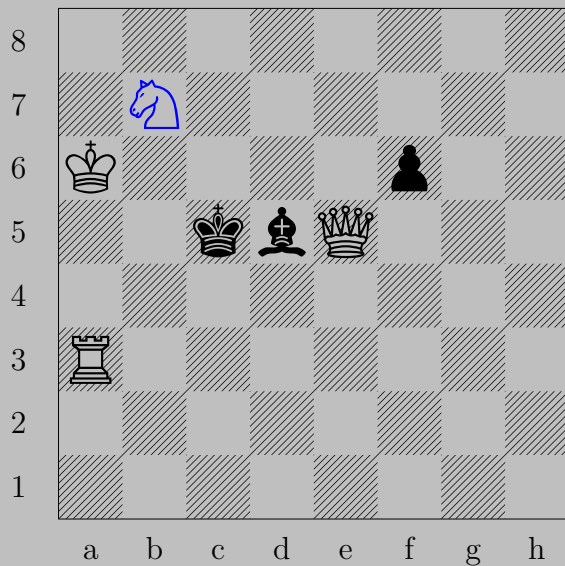
♖h1



♔h5+

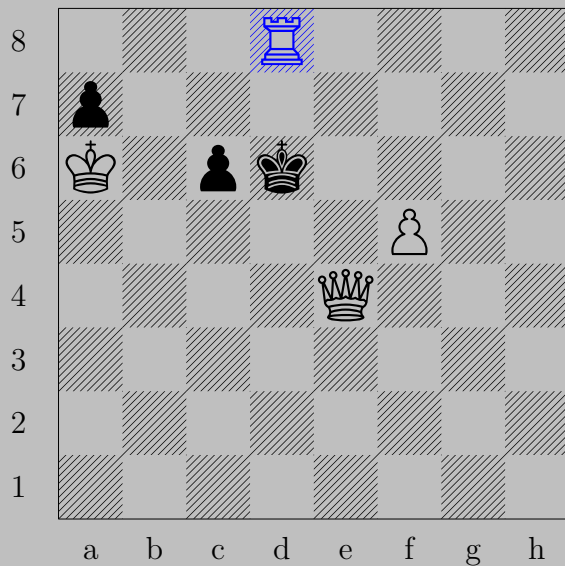
If ♖f5, ♕xf5. If ♔e6, ♕d5.





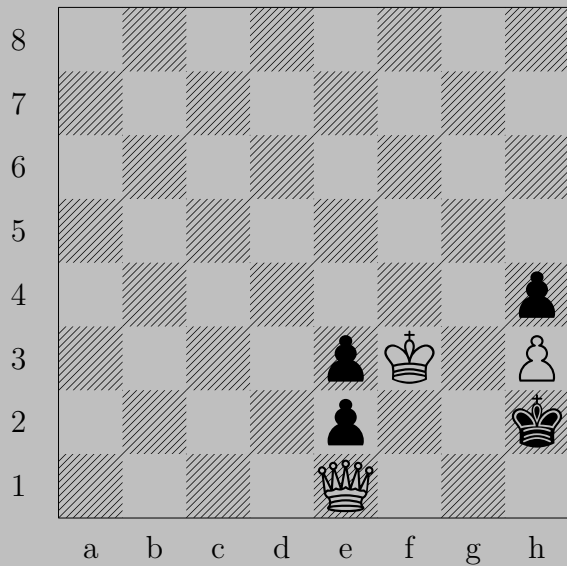
♞b7+

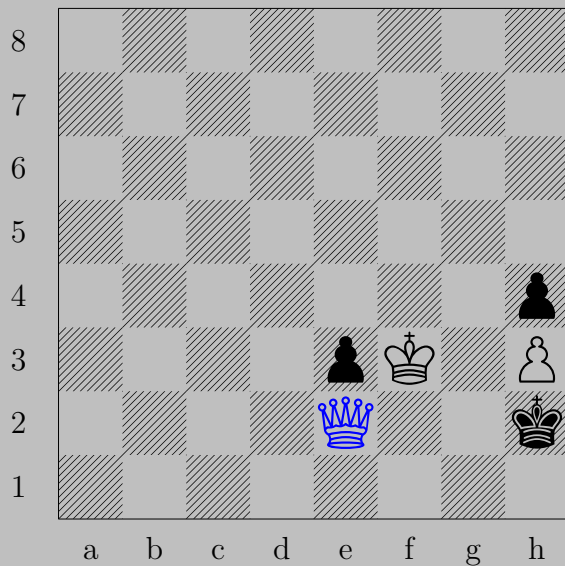
If ♔c6 , ♚d6 . If ♔b4 or ♔c4 , ♚c3 .



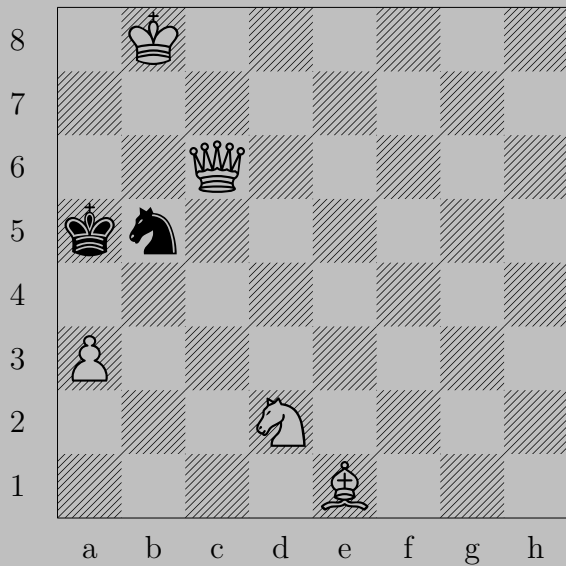
♖d8+

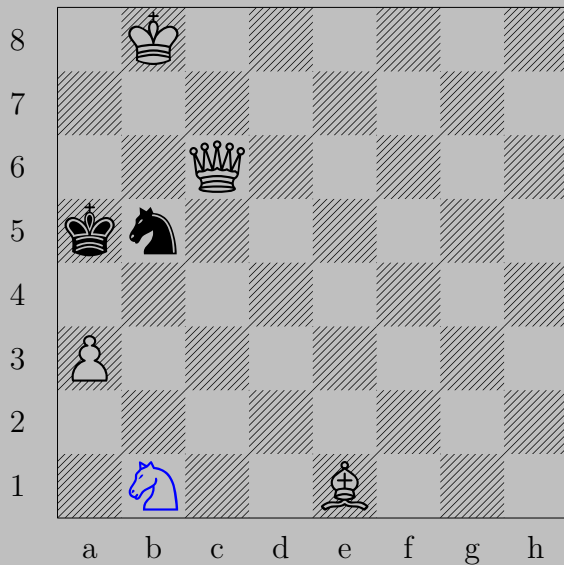
If ♔c7 , ♕e7 . If ♔c5 , ♕d4 .





♙×e2+, ♚×h3 or ♚g1 or ♚h1
 ♙g2





♞b1+

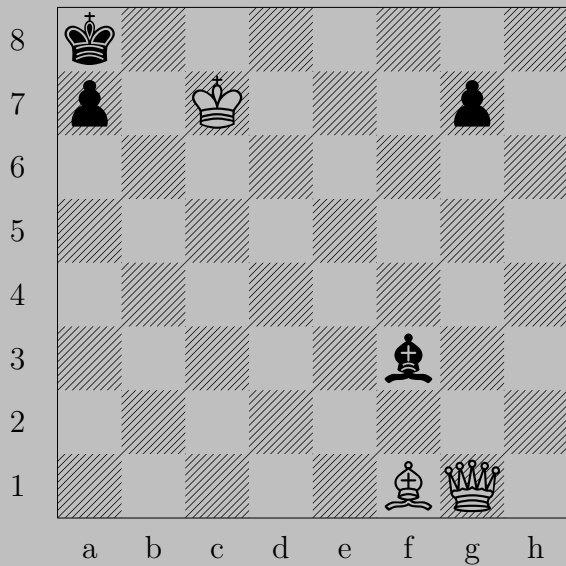
If ♔a4 , ♚c4 . If ♞c3 , ♙xc3 .

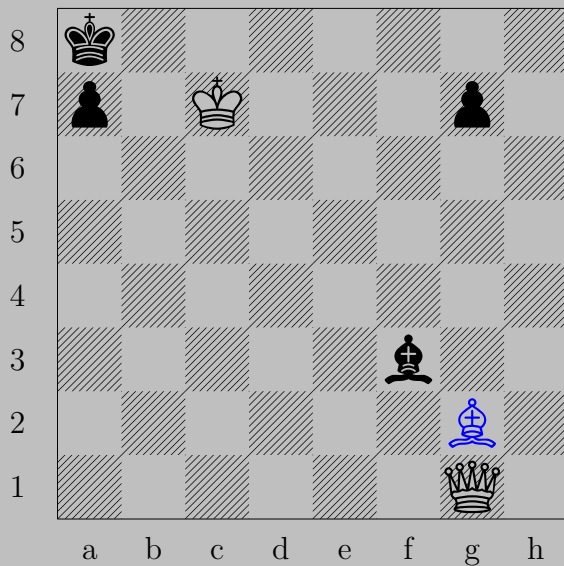




♔xe6+

If ♔h5, ♕h3. If ♔h7, ♖g8♕.

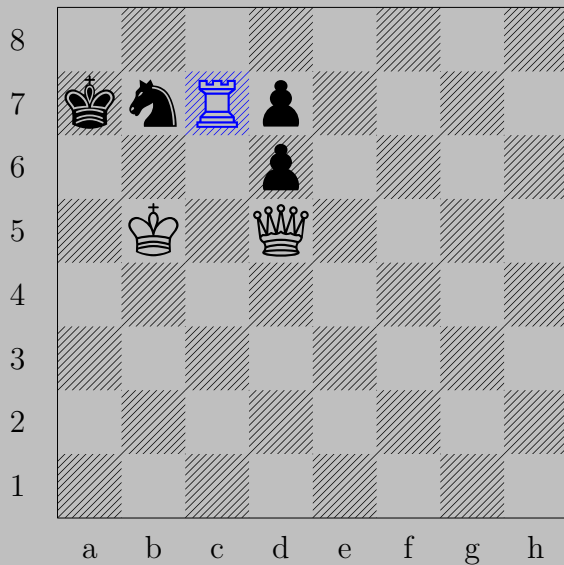




♔g2

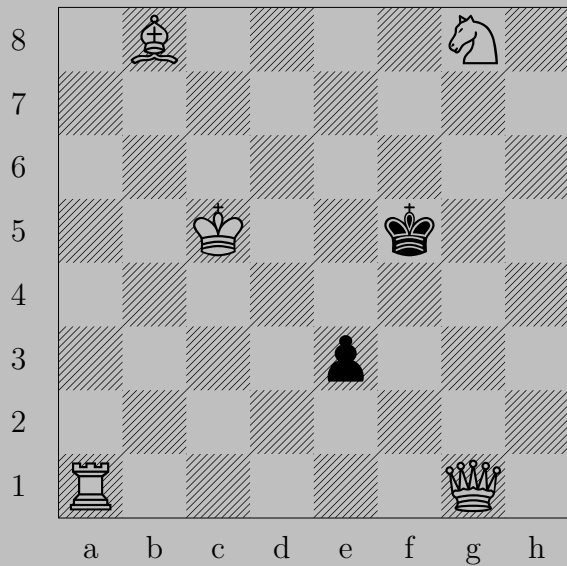
If $\text{♕}\times\text{g2}$, $\text{♔}\times\text{g2}$.

Otherwise, $\text{♕}\times\text{♕}$.



♖c7, ♔a8 or ♔b8

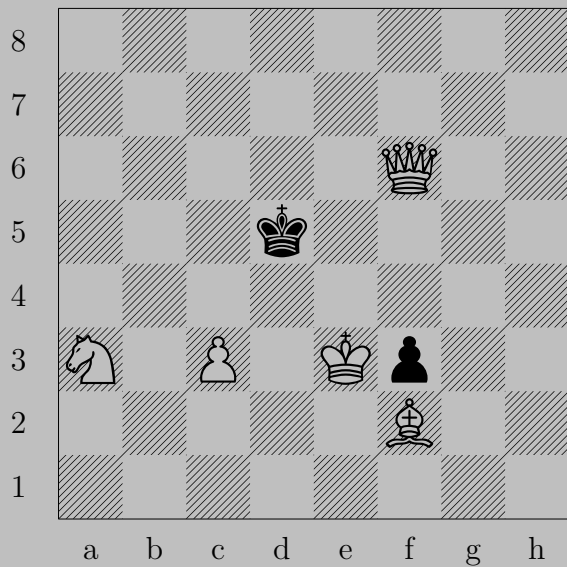
♔x♖7

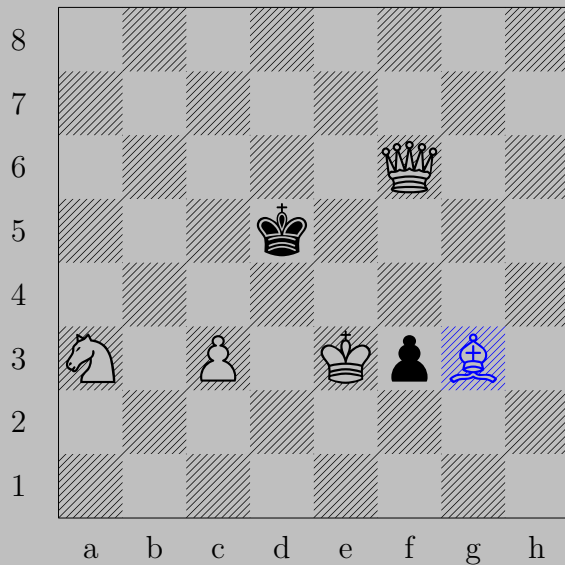




Rf1+

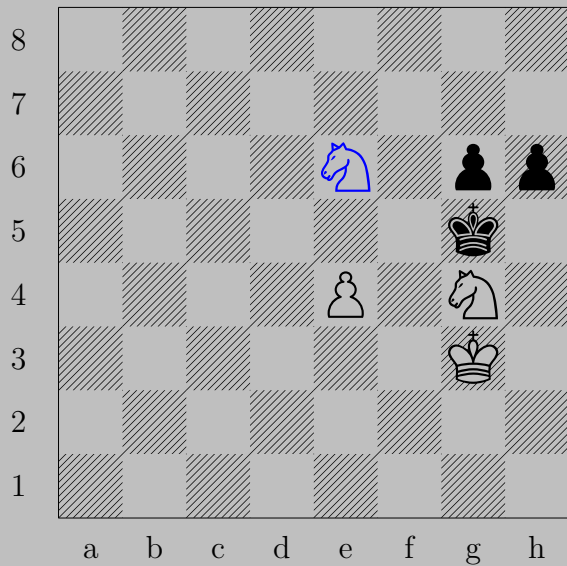
If Ke4 , Qg6 . If Ke6 , Qg4 .





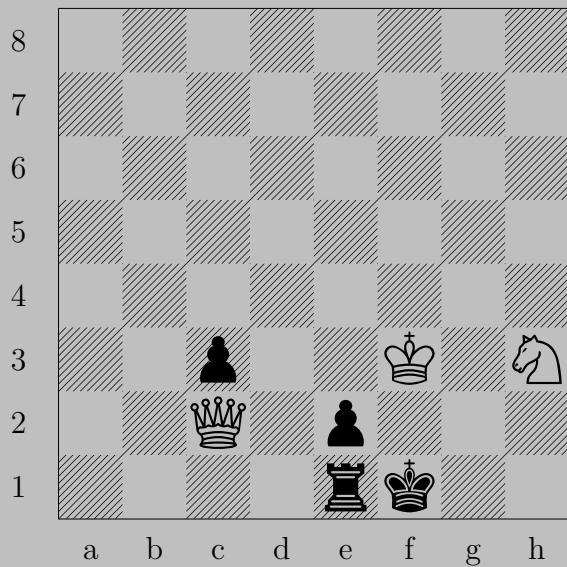
♞g3, ♔c5 or ♖f2

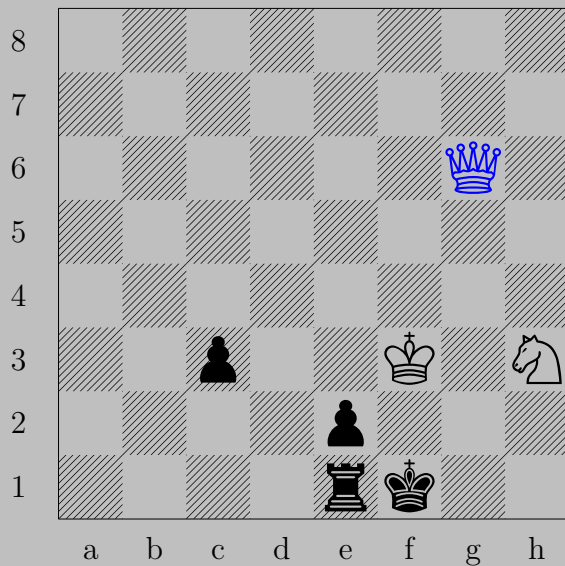
♚d6



♞e6+, ♔h5

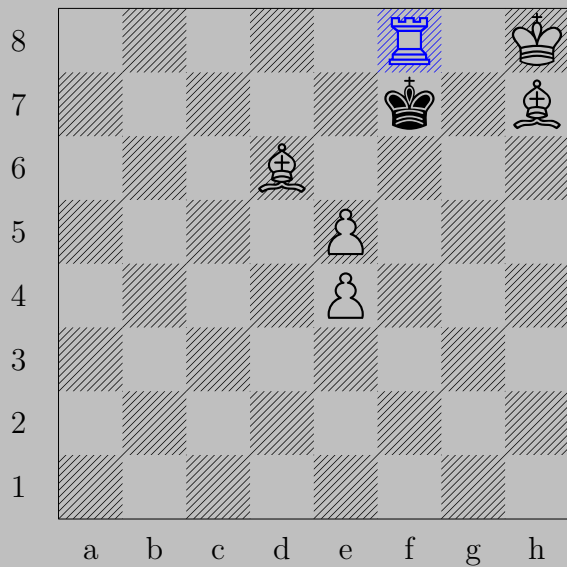
♞f6



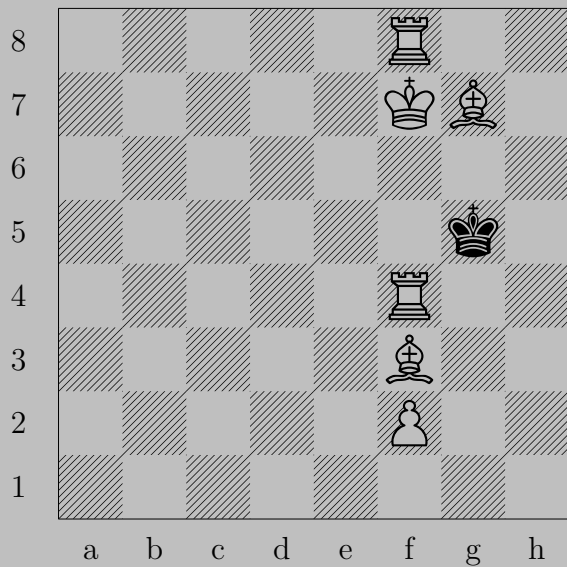


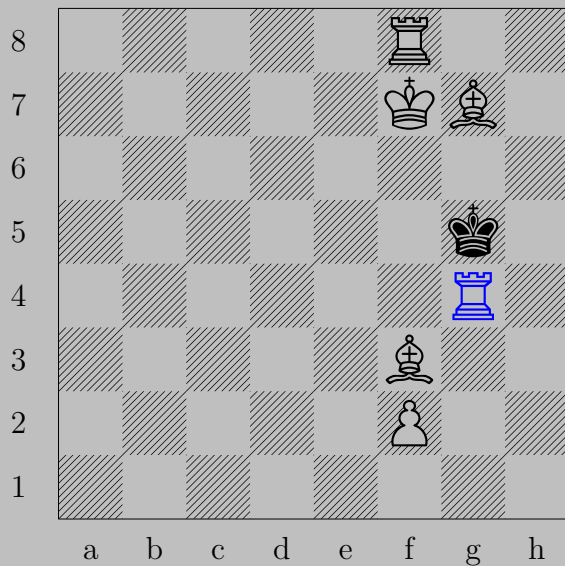
♙g6, ♖c2 or any rook move

♙g1



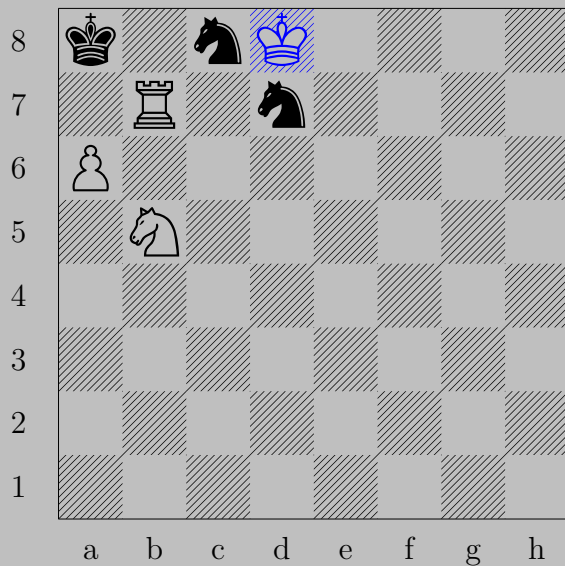
♖f8+, ♔e6
♗f5





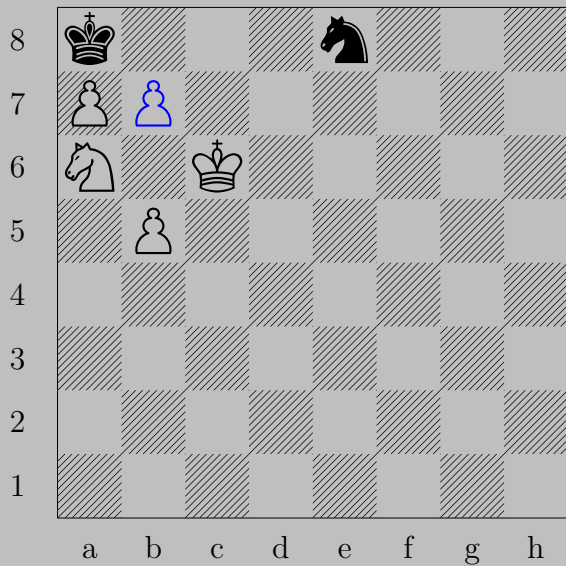
♖g4+

If ♔h5, ♖h8. If ♔f5, ♔e7.



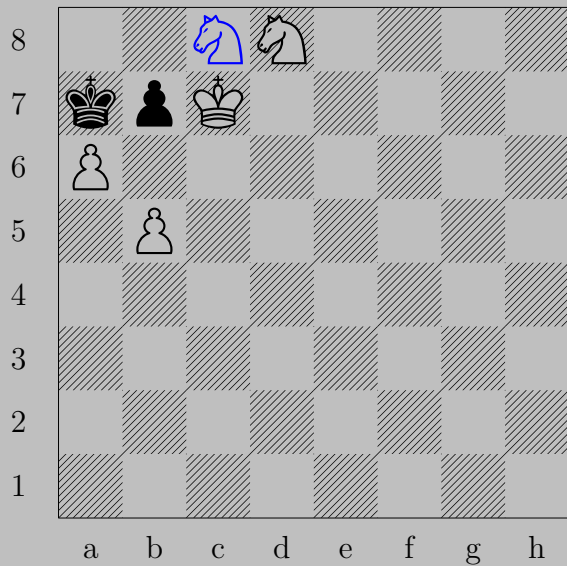
♔d8, any knight move

♞c7

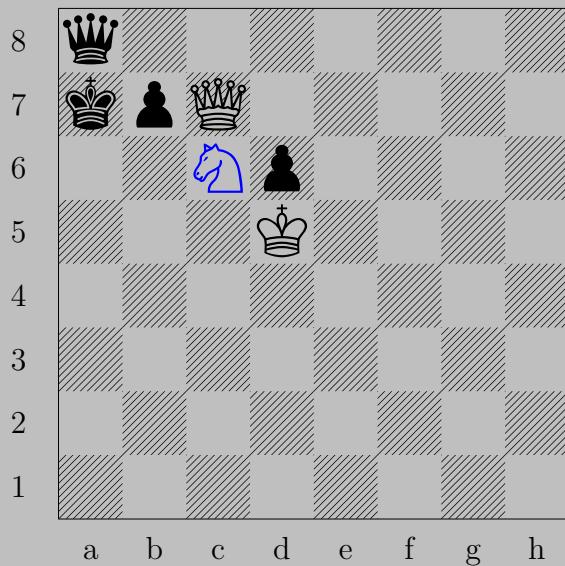


♠b7+, ♔xa7

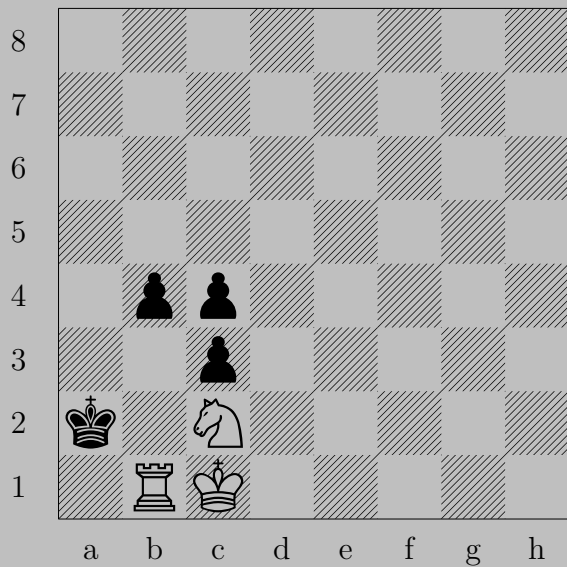
♠b8♔

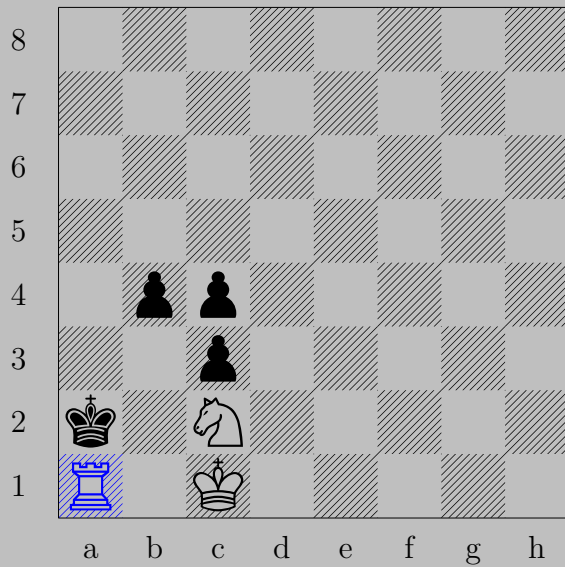


$\text{♞c8+}, \text{♔a8}$
 ♟xb7

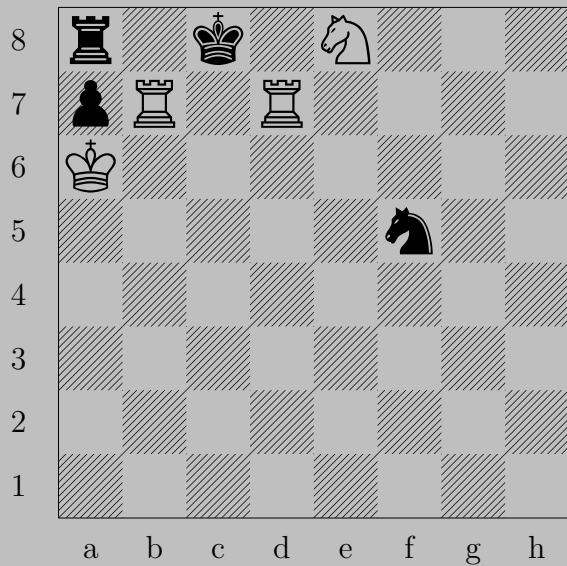


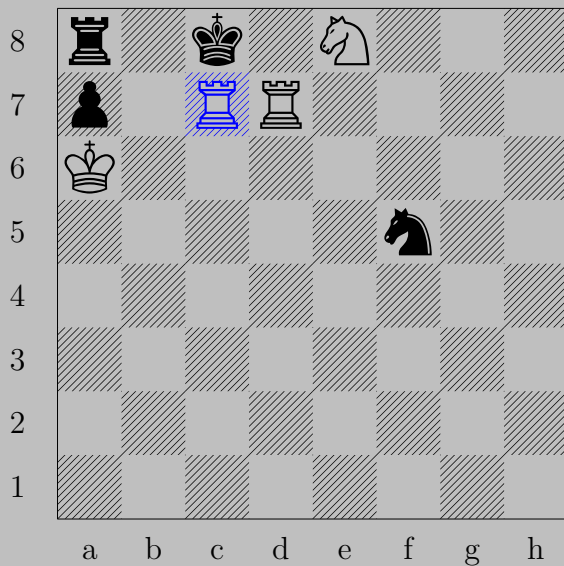
♞c6+ , ♔a6
 ♔a5



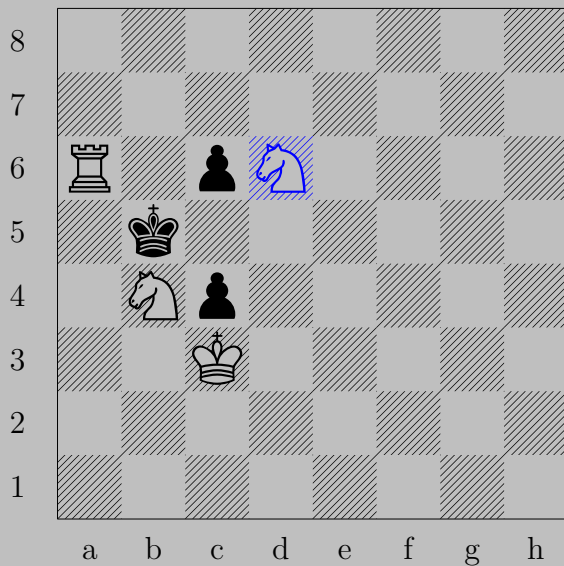


♖a1+, ♔b3
♞d4

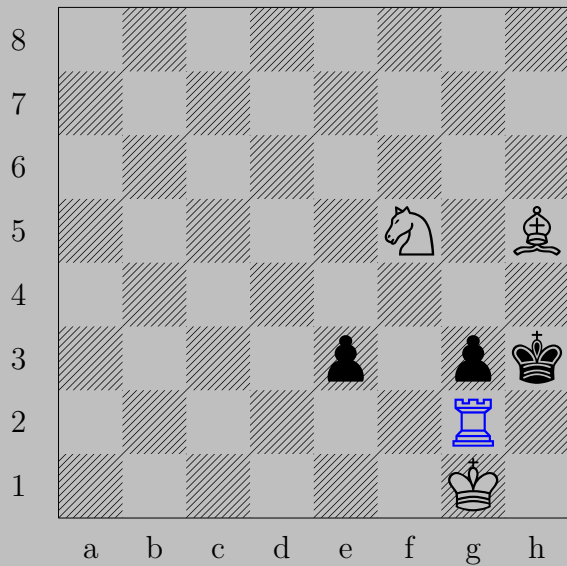




$\text{♖}(b7)c7+, \text{♔}b8$
 $\text{♖}d8$

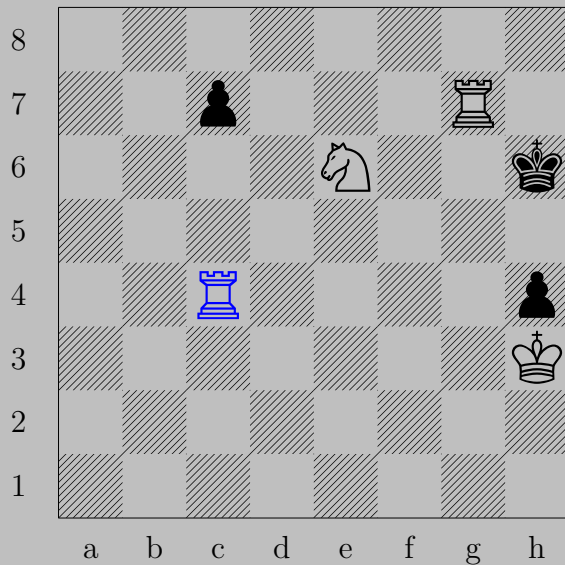


♞d6+ , ♔c5
 ♞xc6



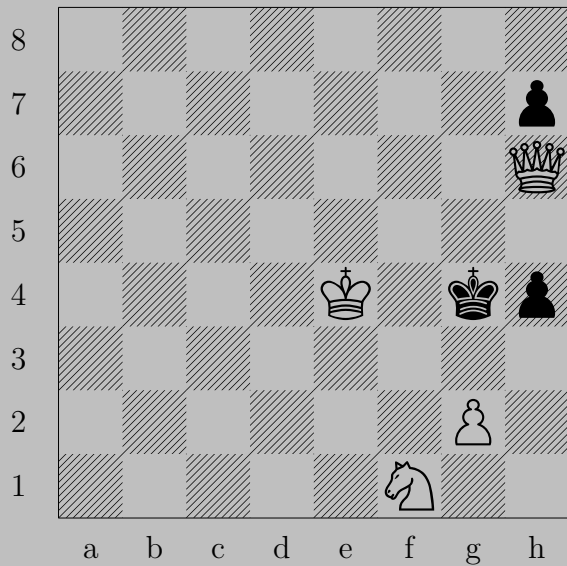
♖g2, ♜e2

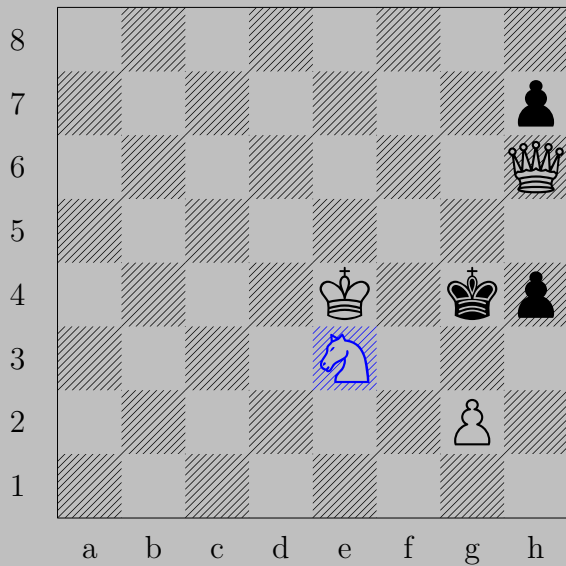
♖xg3



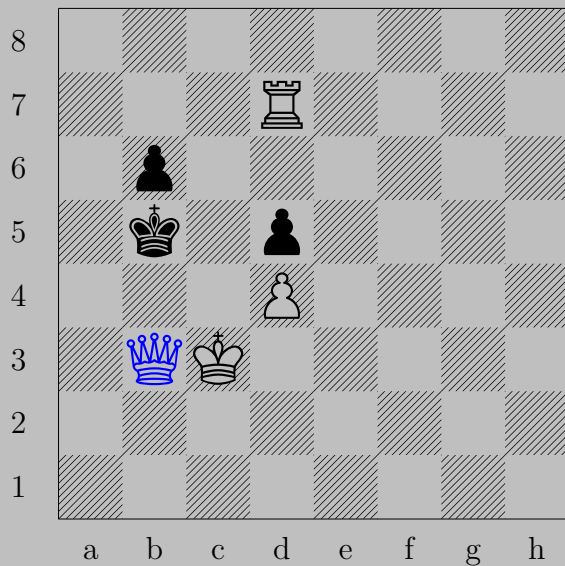
Rc4 , Nc5 or Nc6 or Kh5

Rxh4



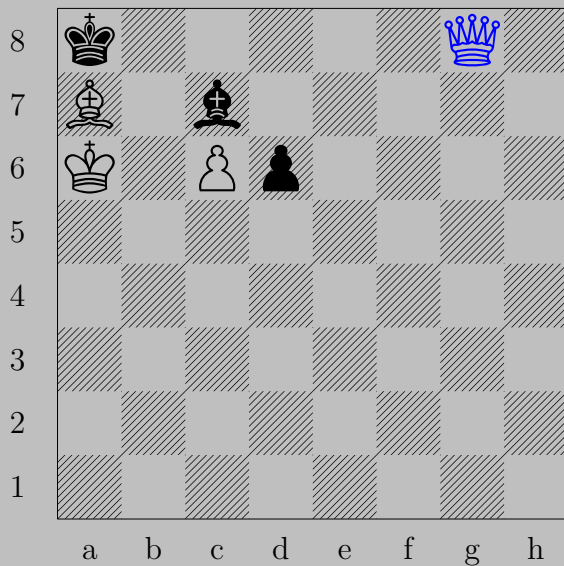


♞e3+, ♔g3
♚f4



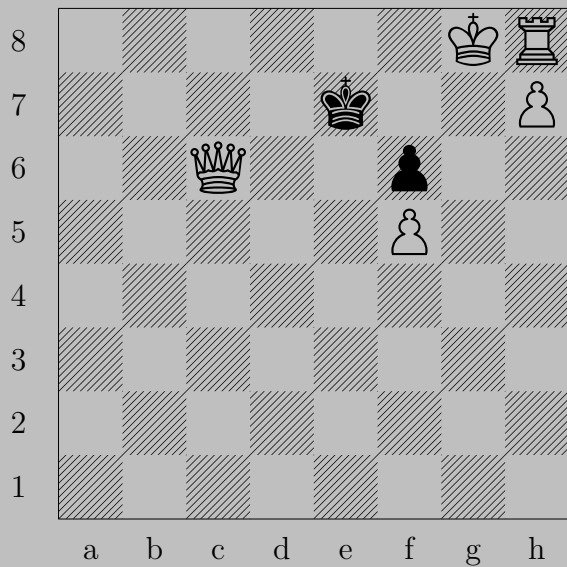
♙b3+

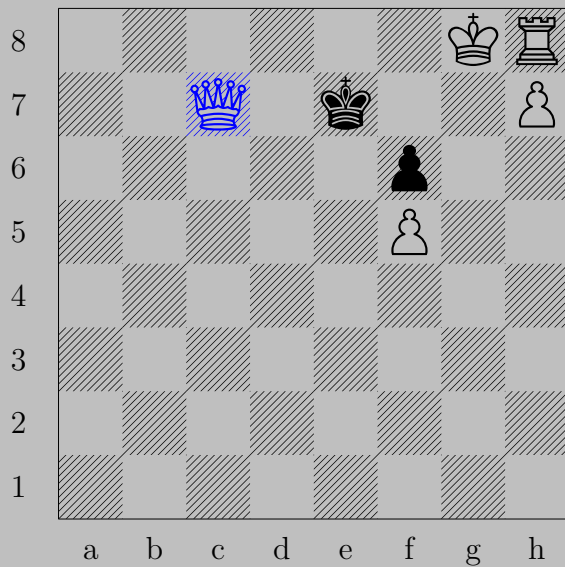
If ♚c6, ♙xd5. If ♚a6, ♙a4. If ♚a5, ♖a7.



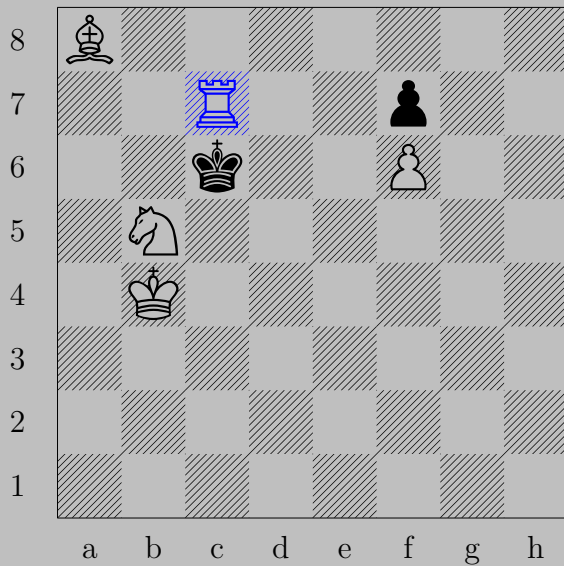
♔g8+

If ♘b8, ♔xb8. If ♘d8, ♔xd8.

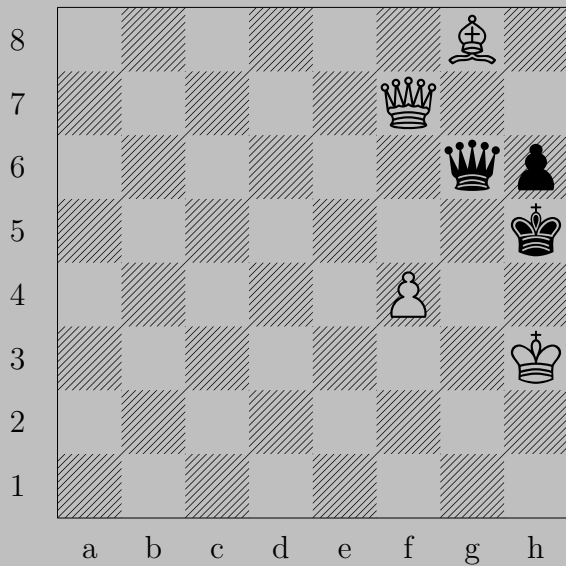




♙c7+, ♚e8
♚g7



$\text{Rc7+}, \text{Kb6}$
 Rc6





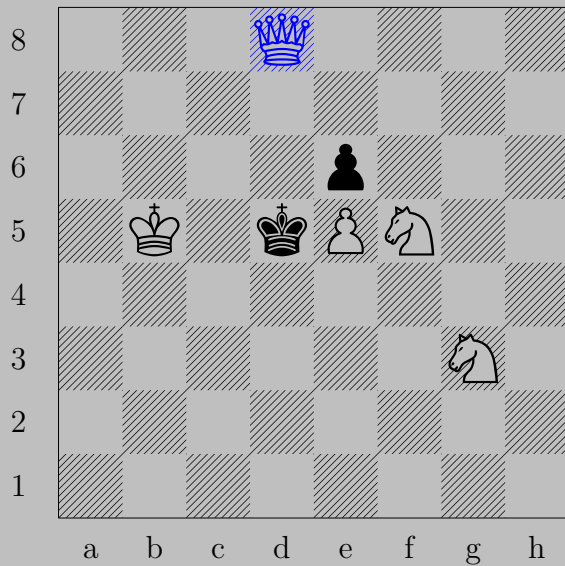
♙d5+

If ♚f5+, ♙xf5. If ♚g5, ♙f7.



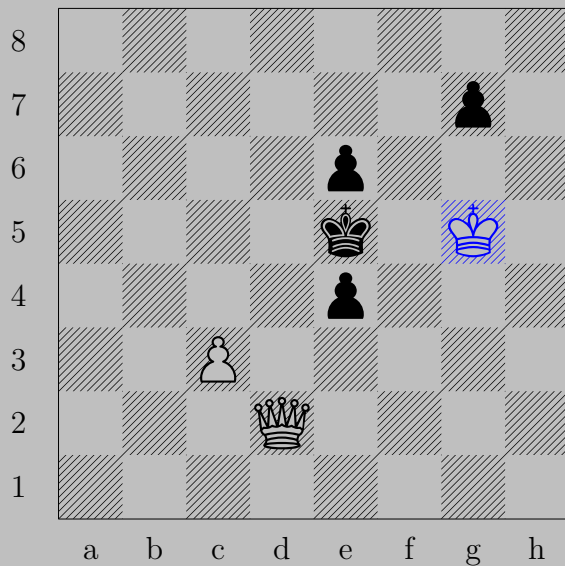
♙d3+

If ♚×g5, ♙g6. If ♚e6, ♙d7.



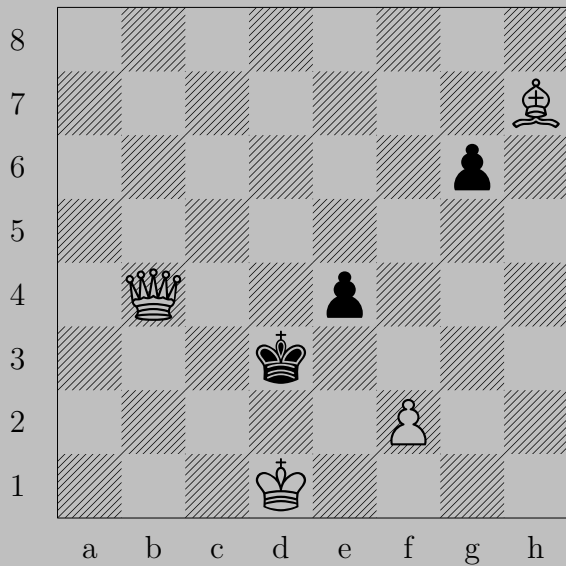
♔d8+, ♔xe5

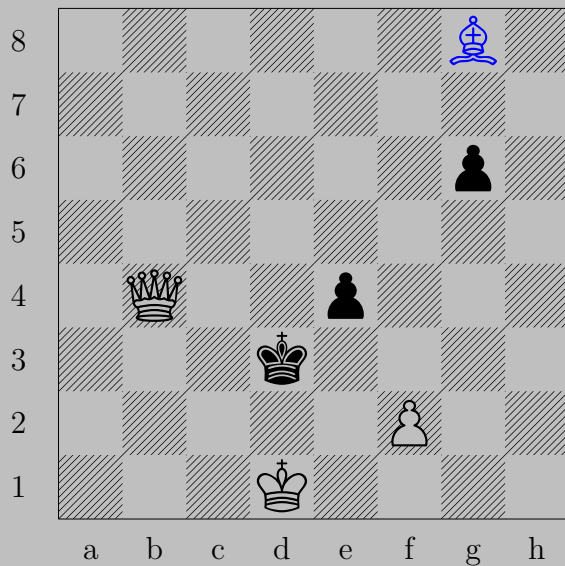
♔d4



♔g5, ♖g6 or ♖e3

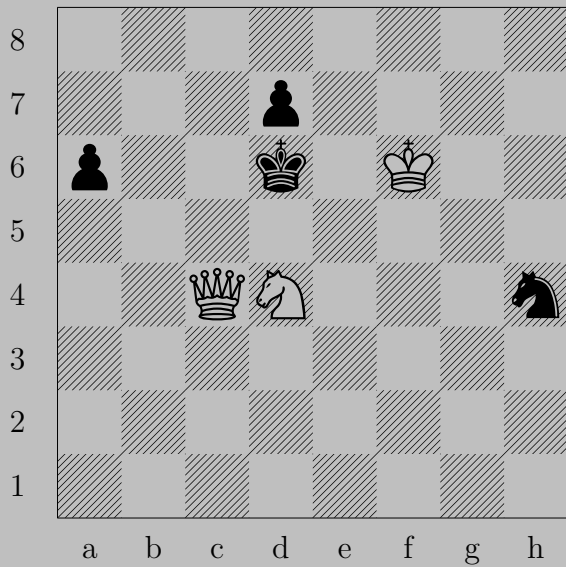
♔d4

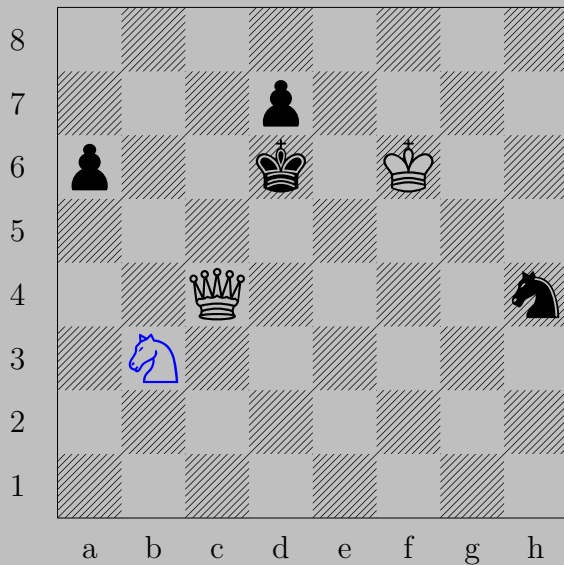






♔g8, ♖e3 or ♖g5

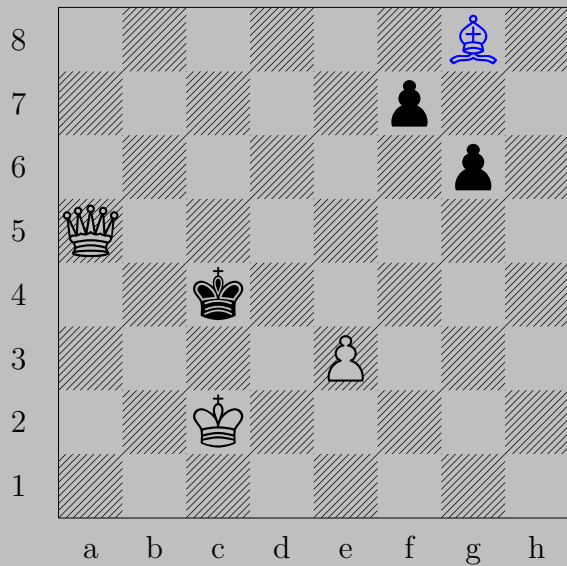
♚c4





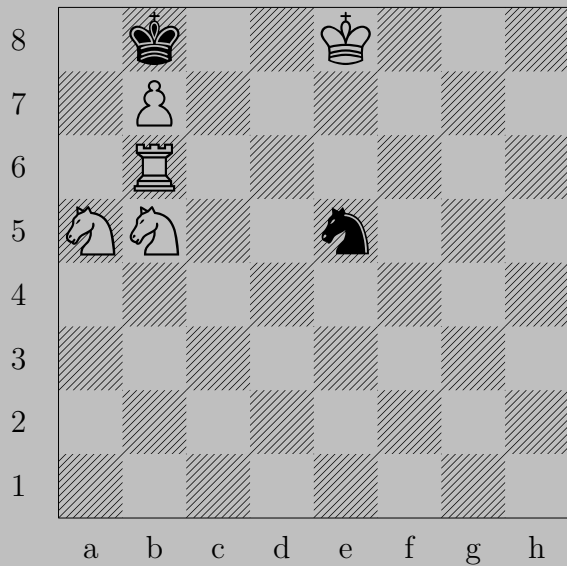
b3, a5 or any knight move

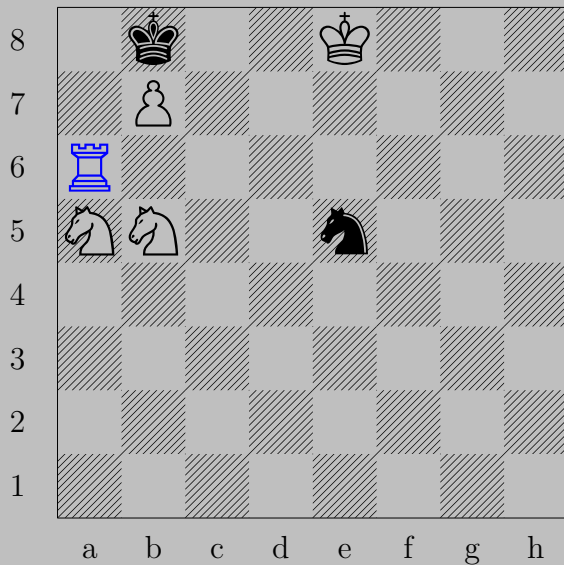
c5



♠g8, ♖g5

♠xf7





♖a6, any knight move

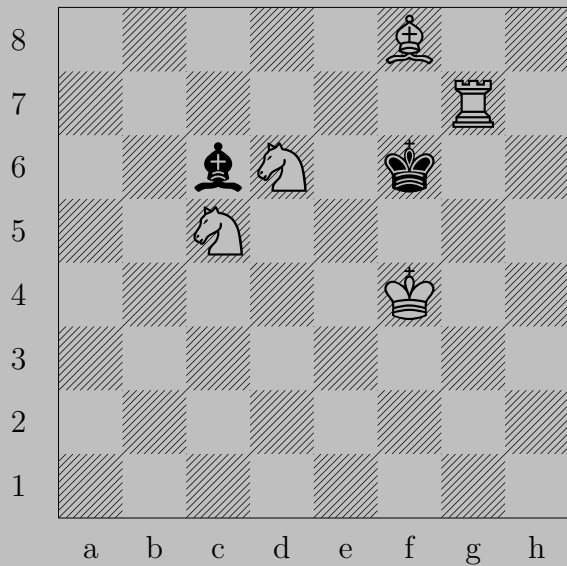
♖a8



♖h3, ♔f4
♜f3



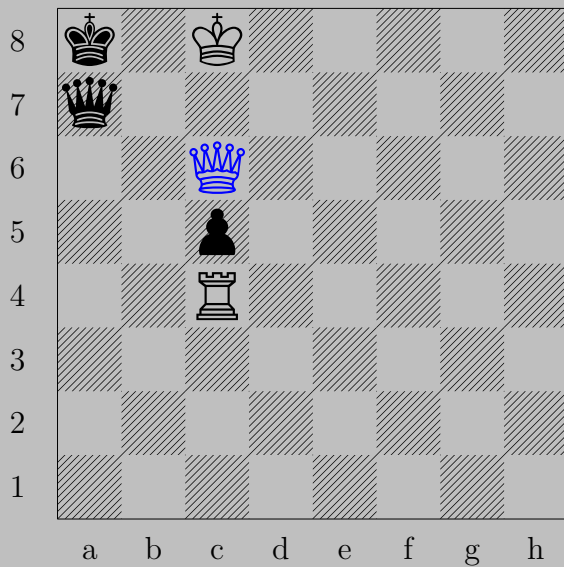
♙f1, ♚h1 or ♘g3
♙g2



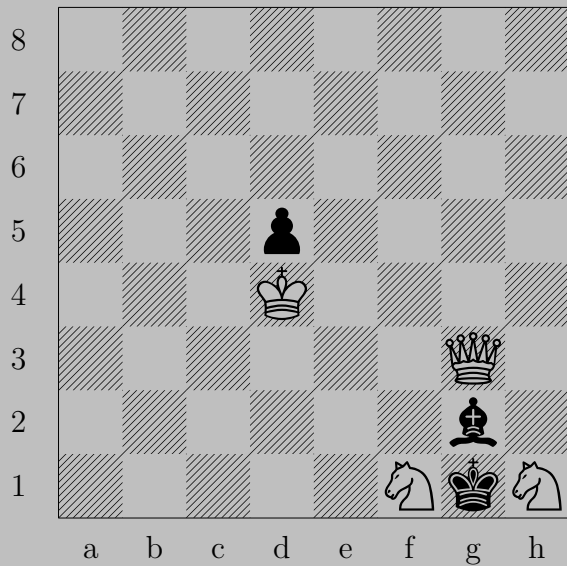


♞f5 , any bishop move

♜e7



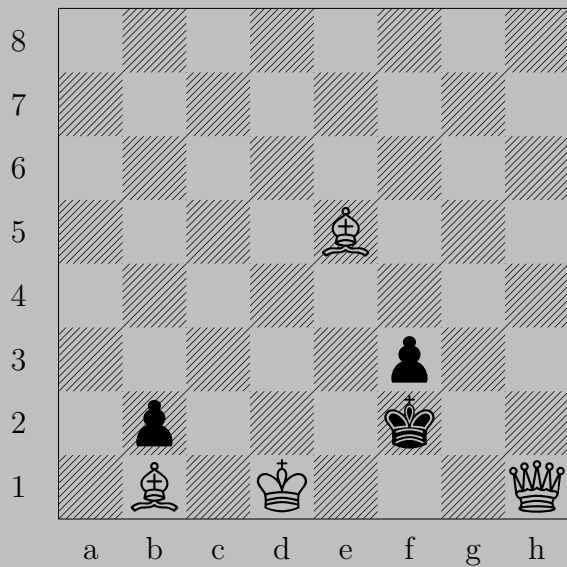
♔c6+, ♔b7+
♔xb7

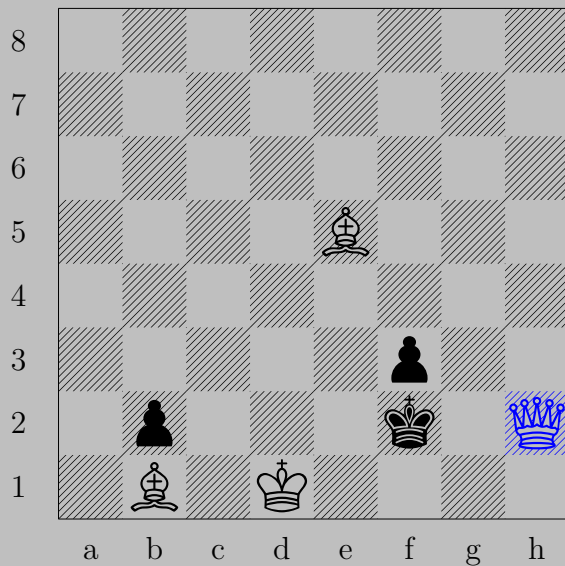




♞e3, ♔xh1

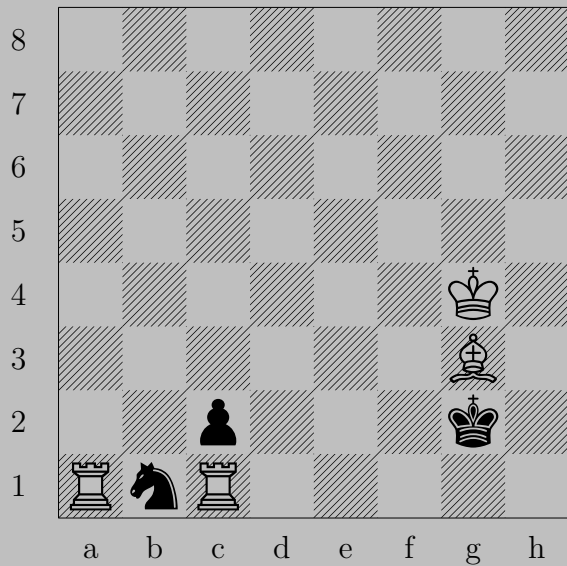
♚xg2

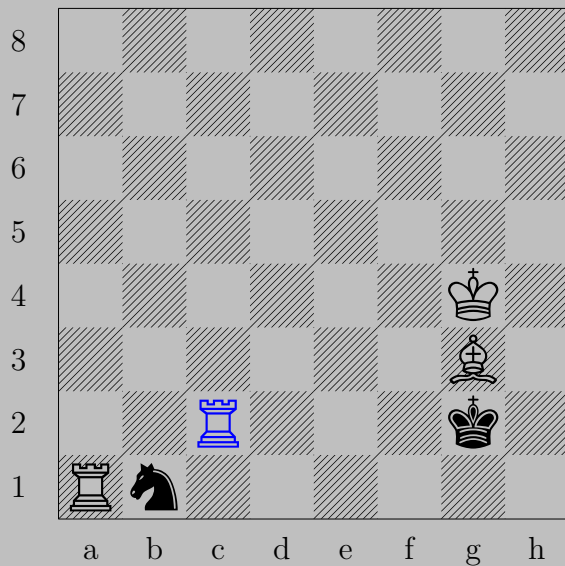




♔h2+

If ♔e3, ♕f4. If ♔f1, ♘d3.

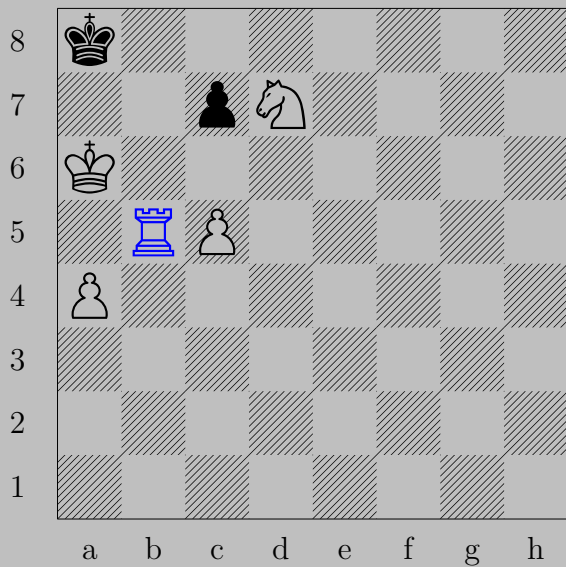




$\text{R}\times\text{c}2+$

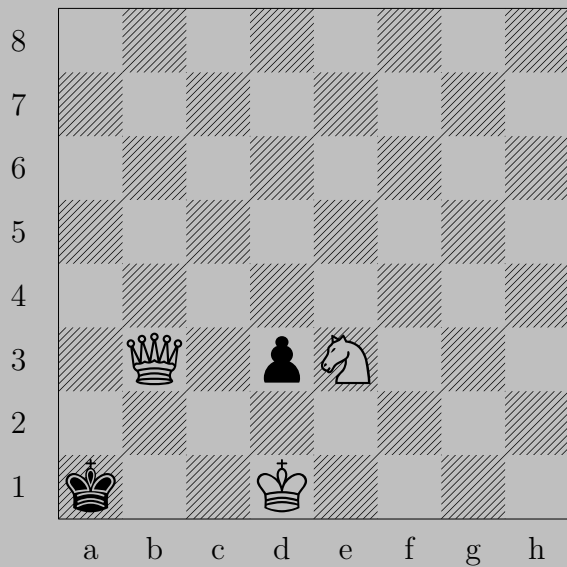
If $\text{K}\text{d}2$, $\text{R}\times\text{d}2$.

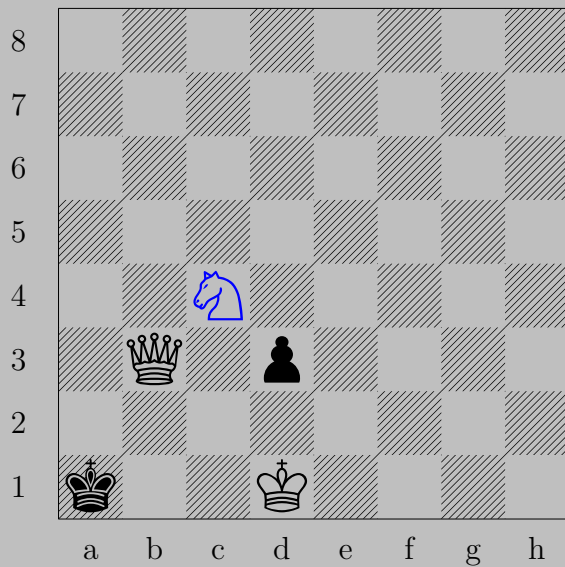
Otherwise, $\text{R}\times\text{b}1$.



♖b5, ♘c6

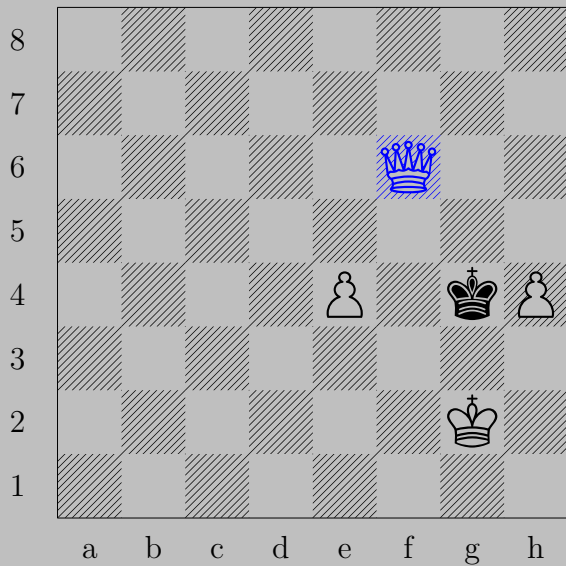
♖b8





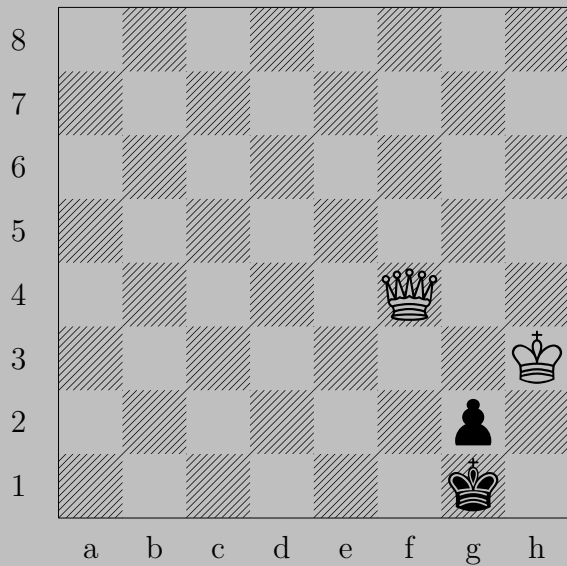
♞c4, ♖d2

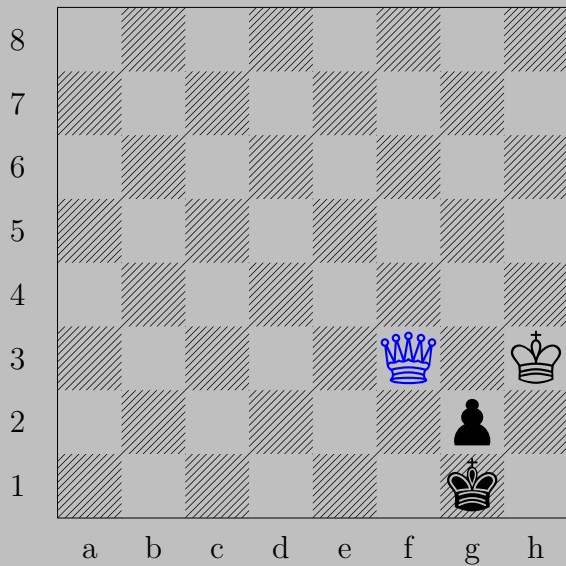
♚b2



♙×f6, ♚h5

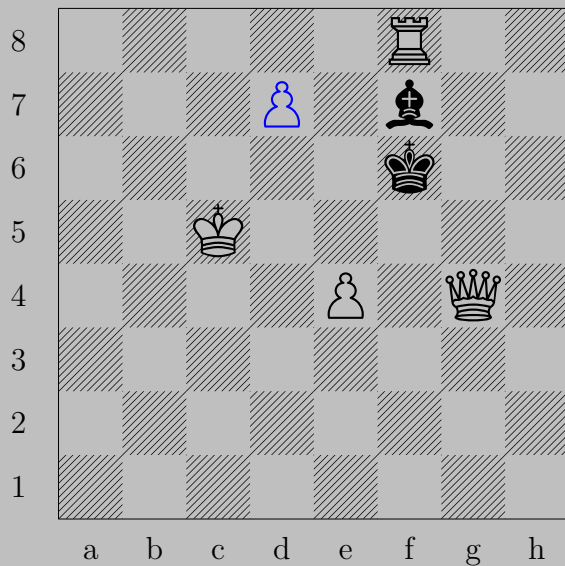
♙g5





♔f3, ♔h1

♙xg2

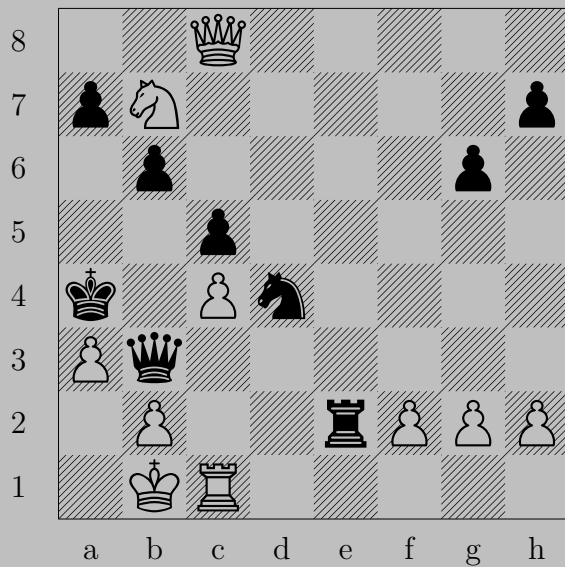


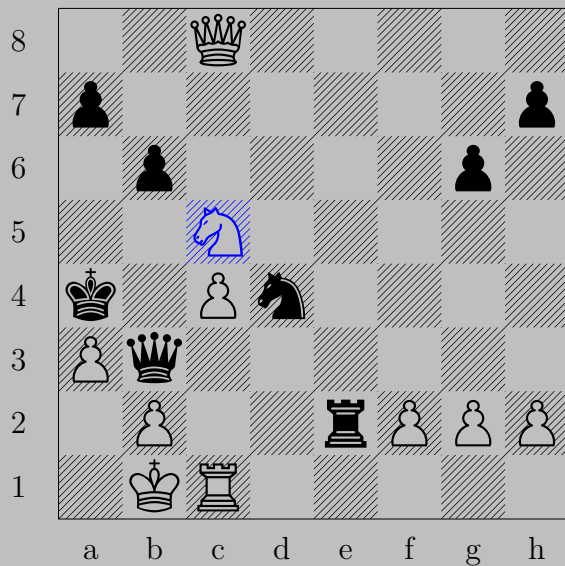
♠d7

If ♔e7, ♠d8♔. If ♔e5, ♔f5.

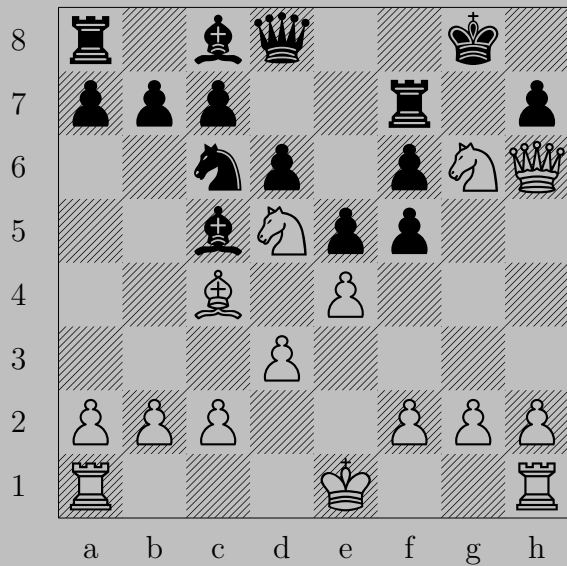


♙f5+, ♔e7
♕f8♙






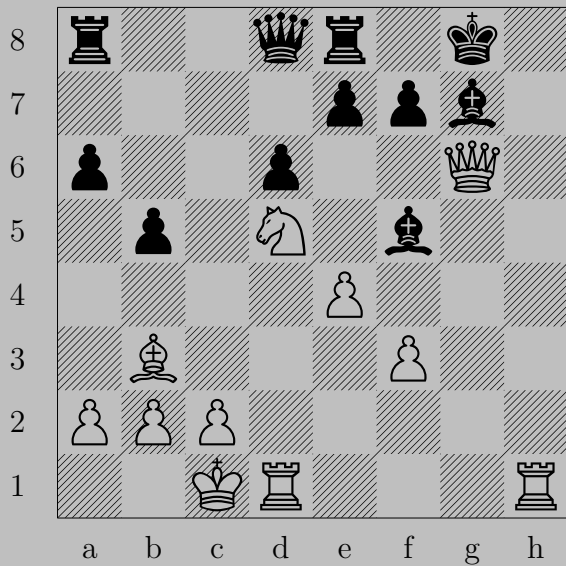


♞xc5+, ♟xc5 or ♔a5
♔a6



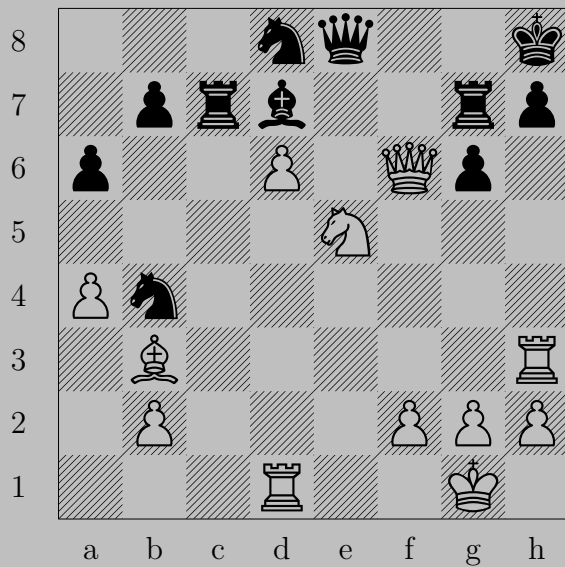


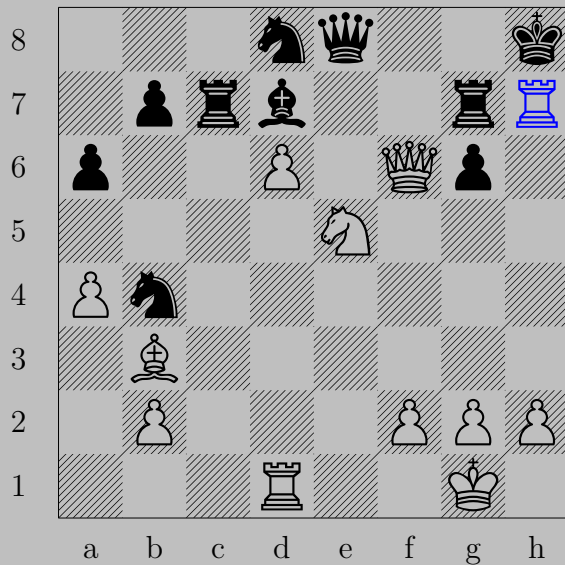
 × f6+,  × f6
 f8



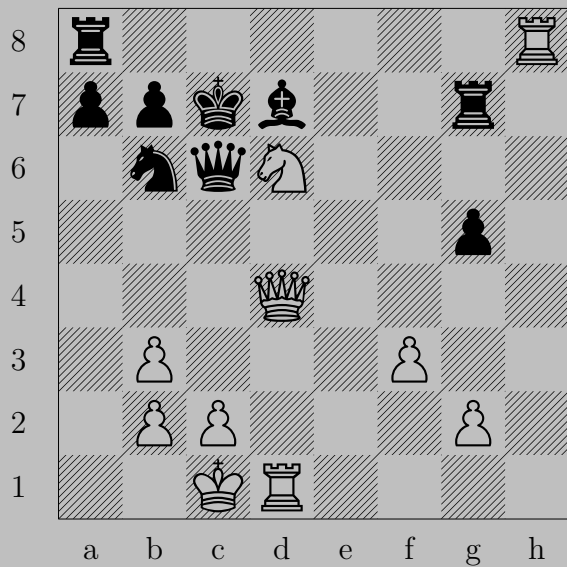


♞f6+, ♟×f6 or ♔f8
♚×f7



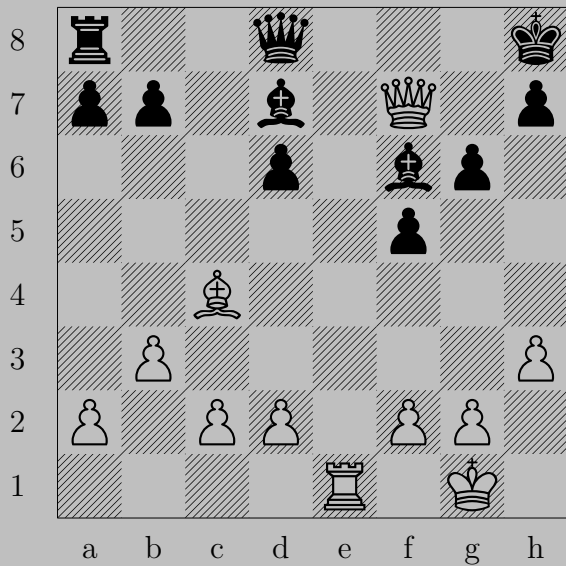


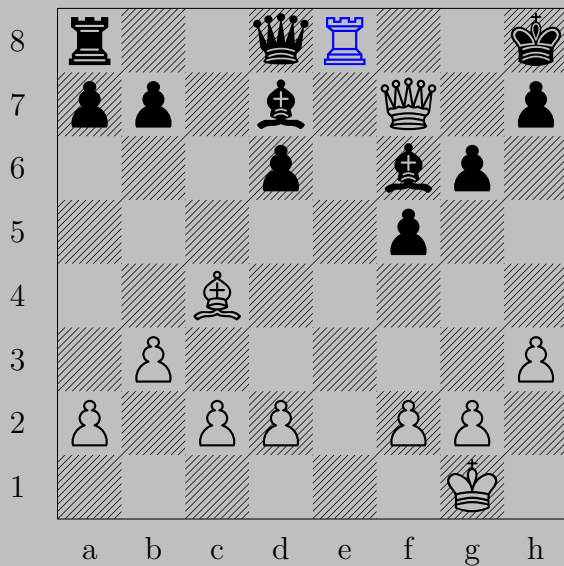
♖xh7+, ♔xh7
♔h4





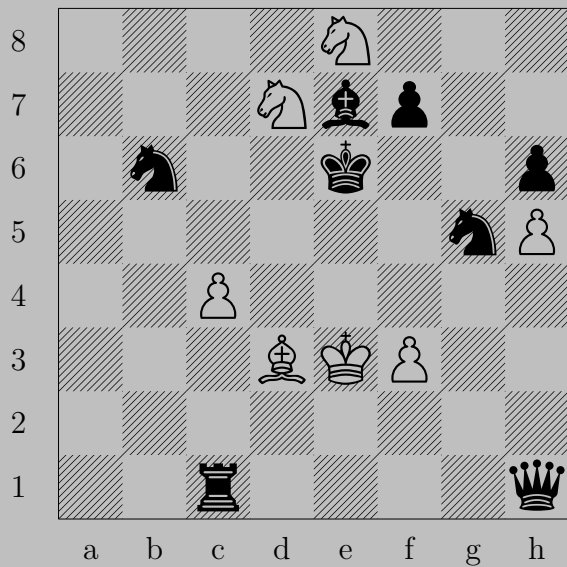
♞b5+, ♚×b5
 ♚d6





$\text{R}e8+$

If $\text{Q}xe8$, $\text{Q}xf6$. If $\text{N}xe8$, $\text{Q}g8$.



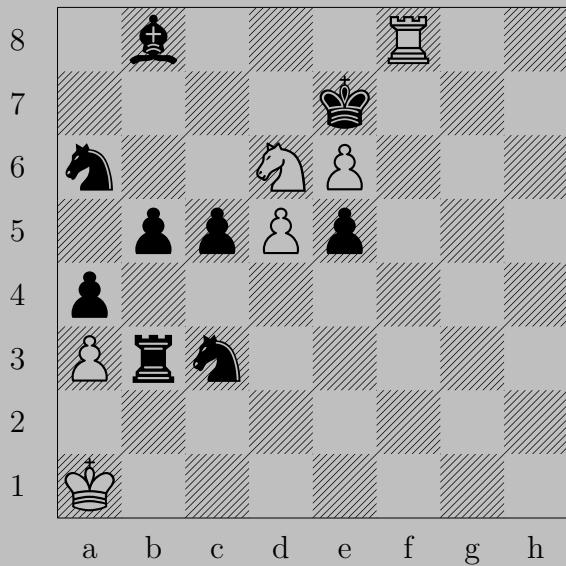


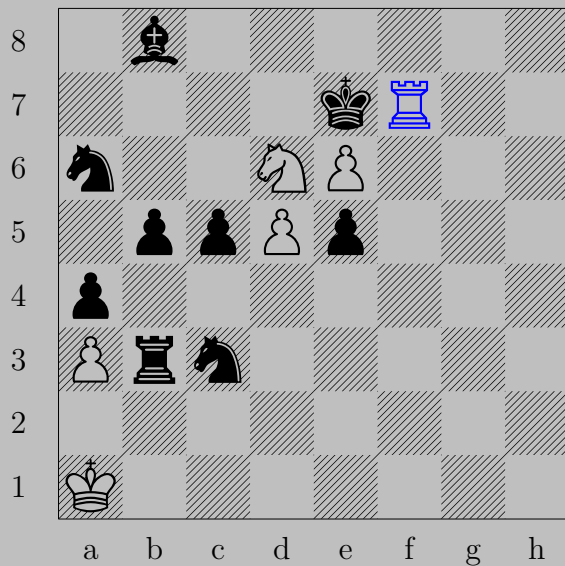
♘f5+, ♔×f5

♞g7

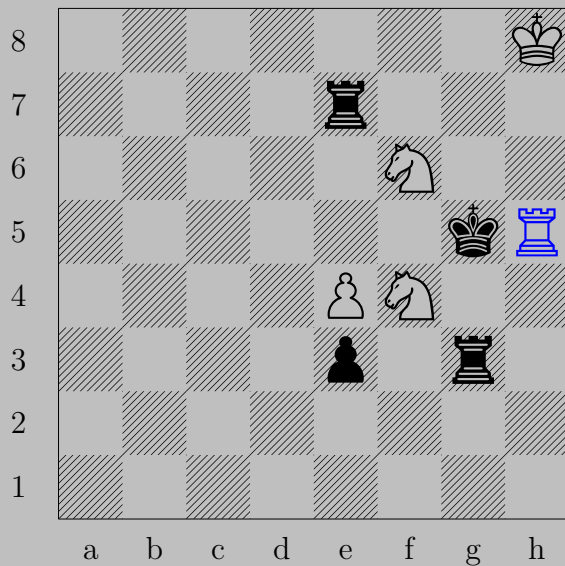


♙d1+, ♚xh4
 ♖g3

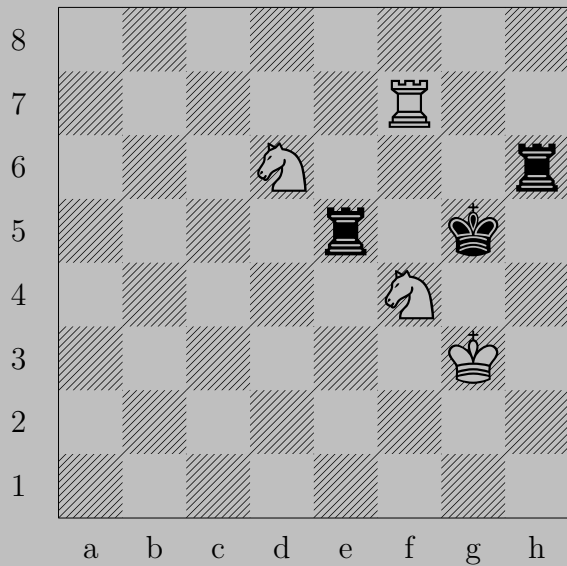


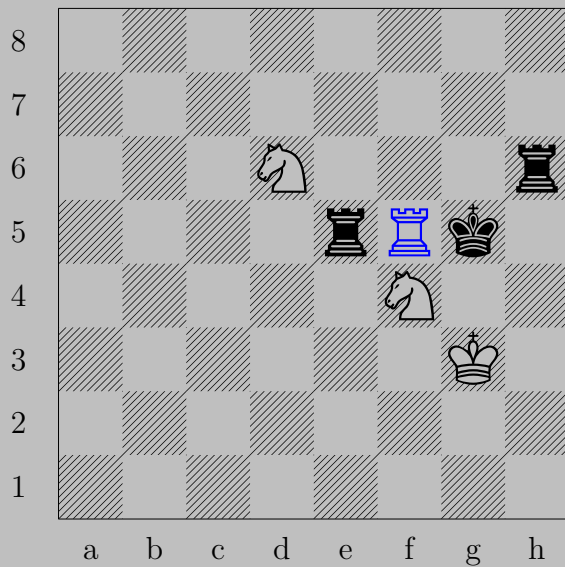


♖f7+, ♔xd6 or ♔d8
♖d7

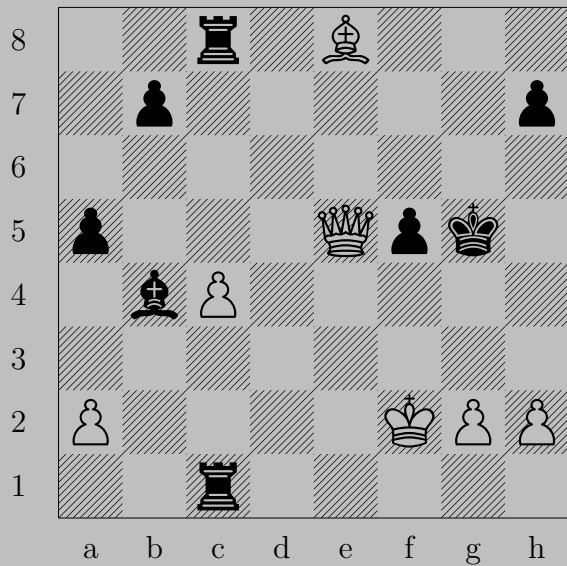


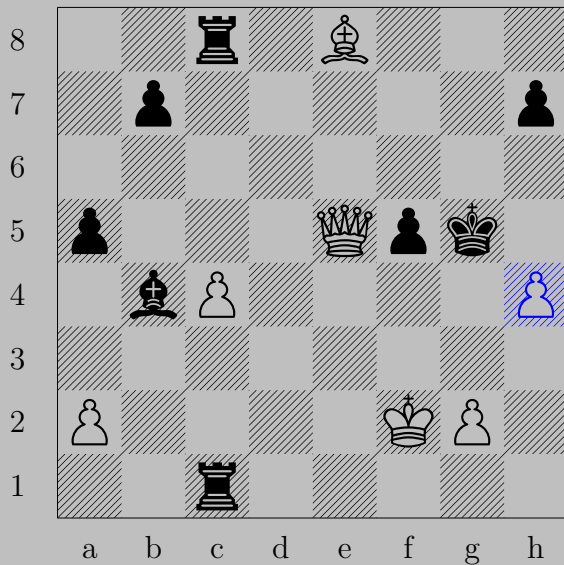
♖h5+, ♔xf4 or ♔xf6
♖f5





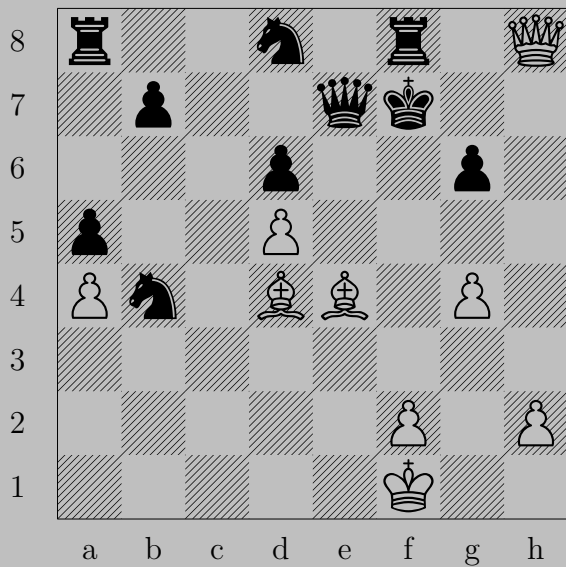
$\text{Rf5+}, \text{Rxf5}$
 Ne4





$\triangleleft h4+$

If $\text{♙} \times h4$ or $\text{♙} g4$, $\text{♚} g3$. If $\text{♙} h6$, $\text{♚} f6$.



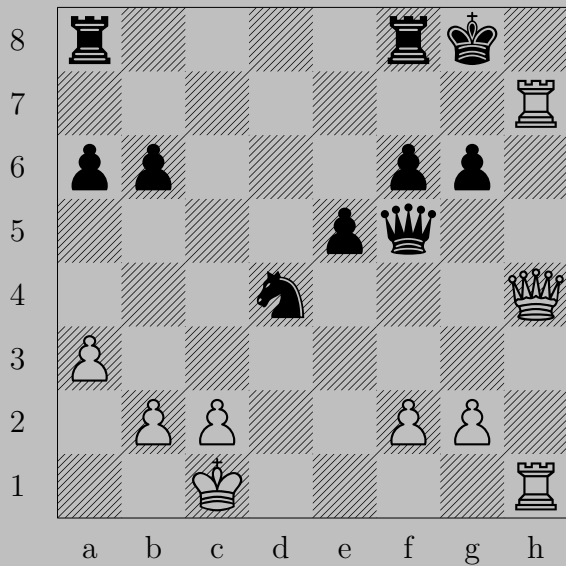


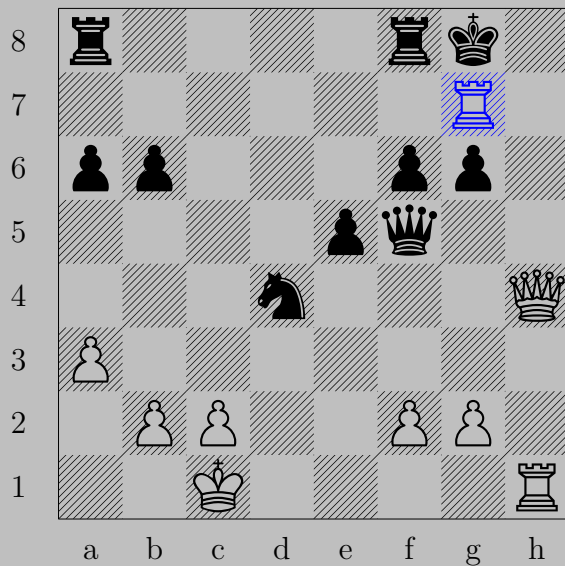
♙×g6+, ♚×g6
♚h5



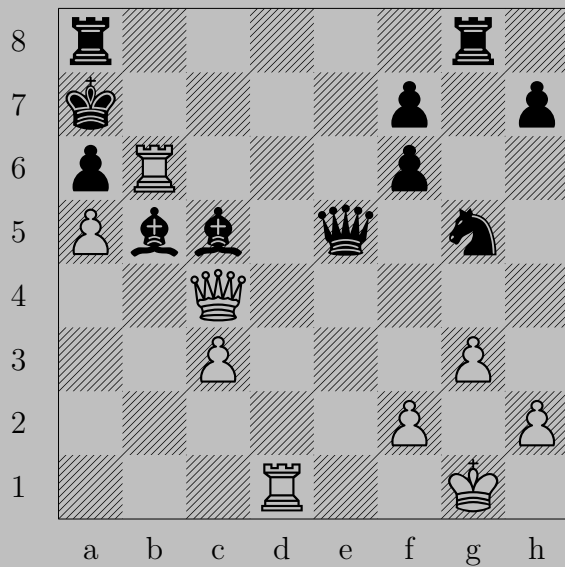
♞e7+

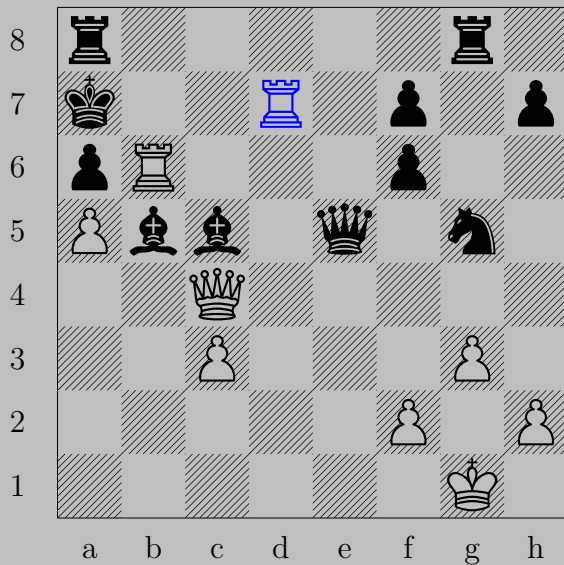
If ♜xe7 , ♜h8 . If ♞g7 , ♜h6 .





$\text{♖g7+}, \text{♔xg7}$
 ♕h7





♖d7+

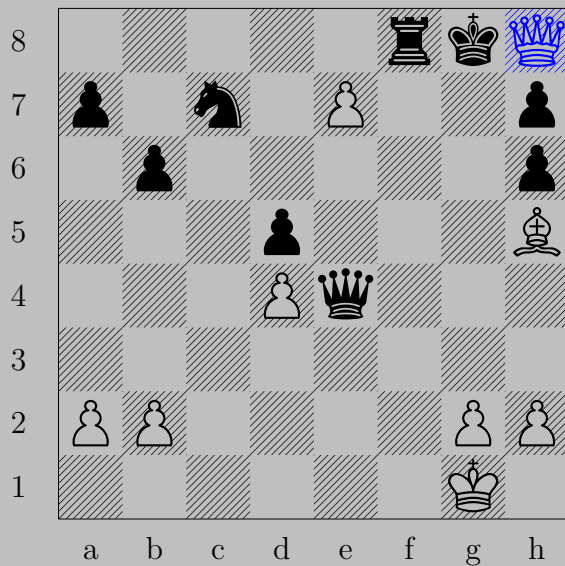
If ♙xd7 , ♚xa6 . If ♙c7 , ♖xc7 .



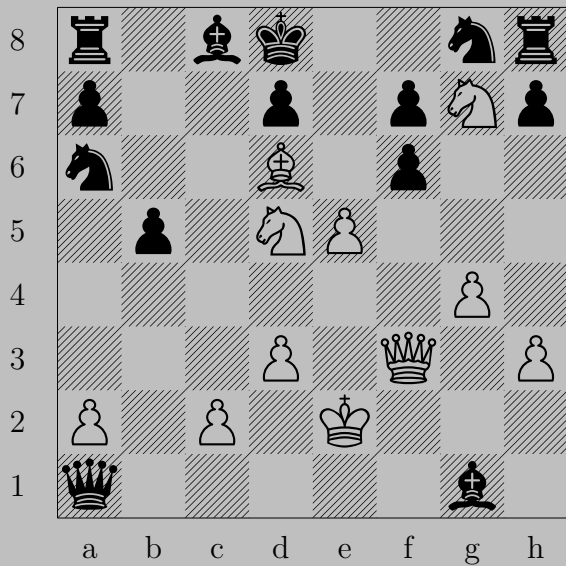
♙f8

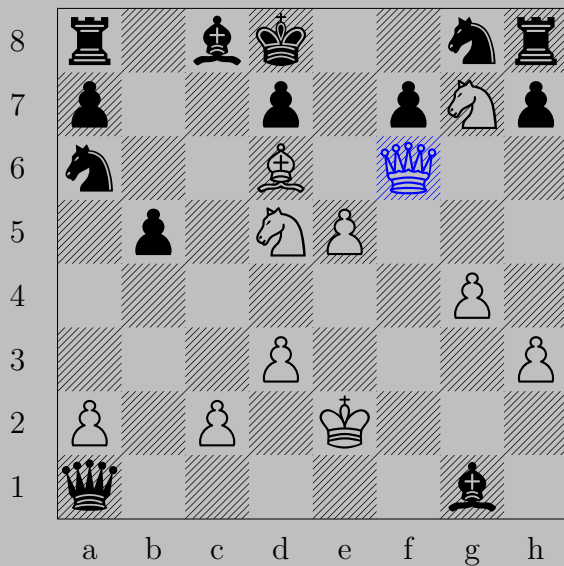
If ♜x f8 , ♞e7 . If ♚x f8 , ♞h8 .

Otherwise, ♞g7 .



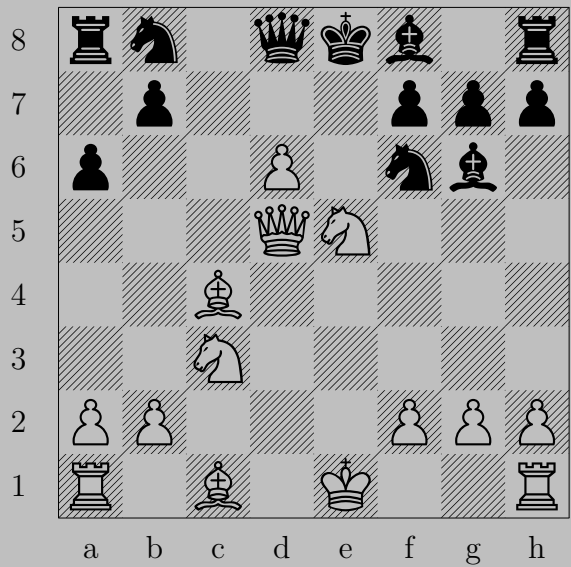
h8+, xh8
xf8 





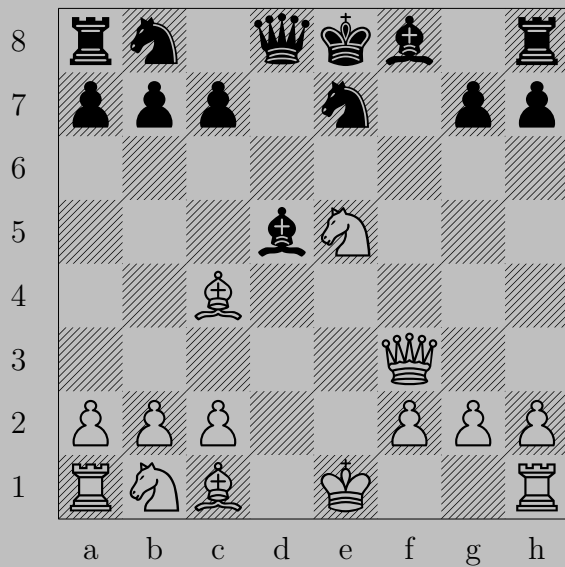
♙×f6+

If ♘×f6, ♕e7. If ♘e7, ♙×e7.





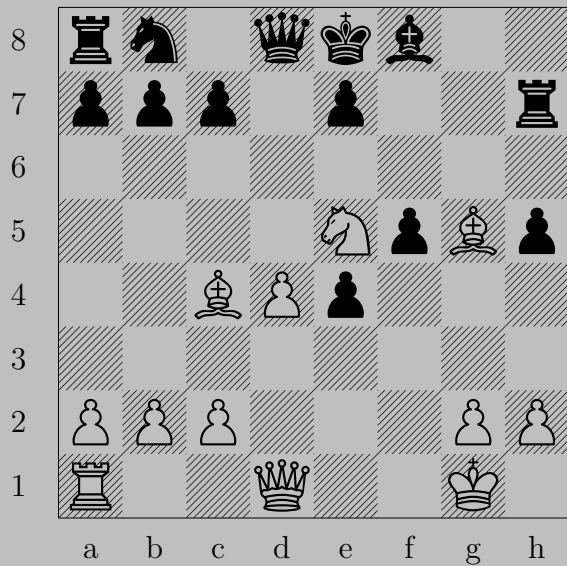
♔×f7+, ♕×f7
 ♕×f7

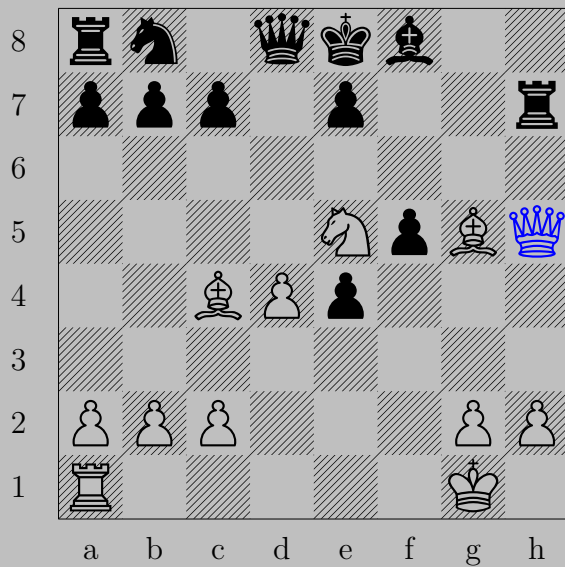




♙f7+, ♜xg7

♜xg7





♔×h5+, ♖×h5

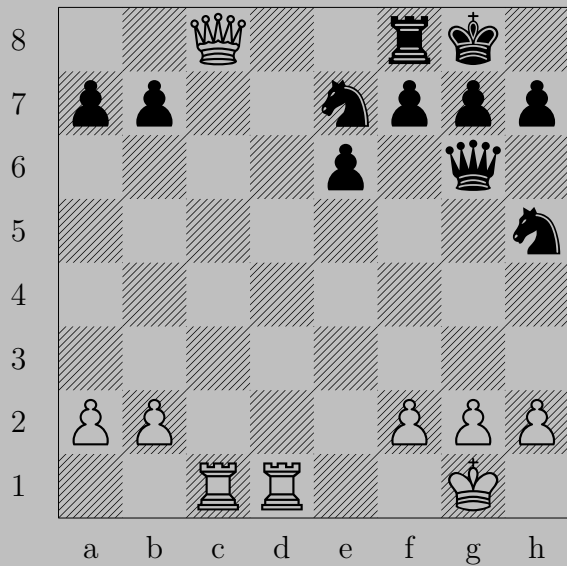
♗f7

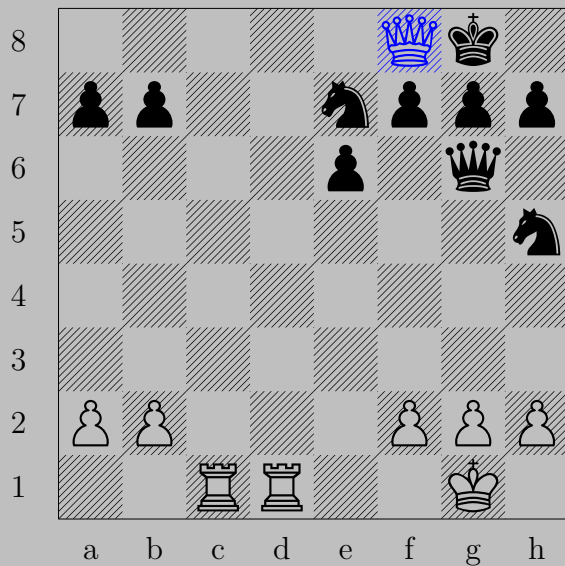


♙×c4

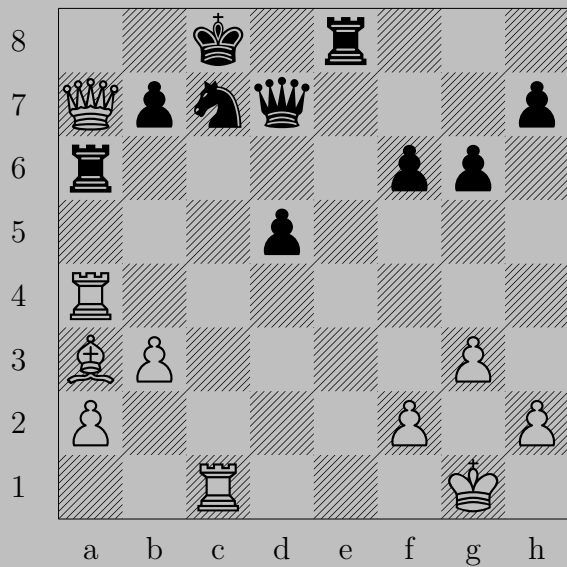
If ♖×c4, ♜×f8.

Otherwise, ♚g8.







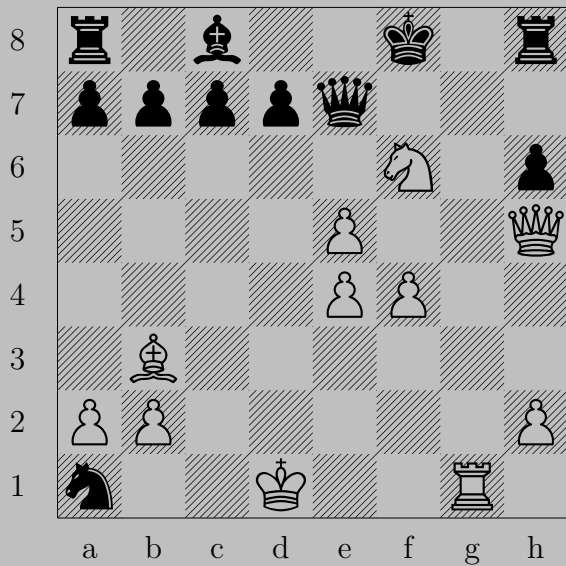
♙×f8+, ♚×f8
♖d8

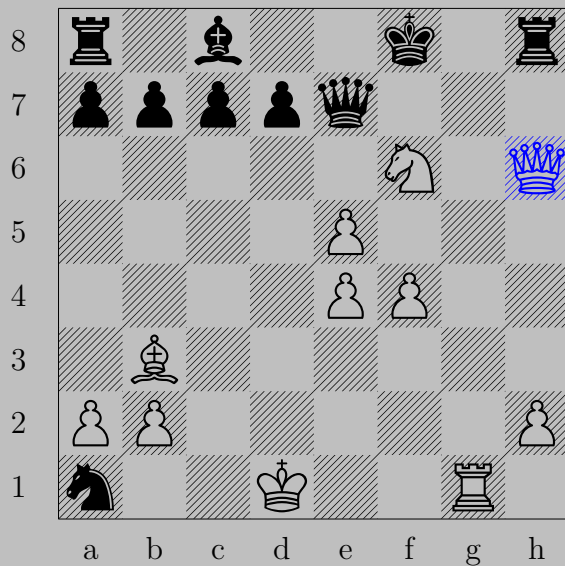




a8+, x8

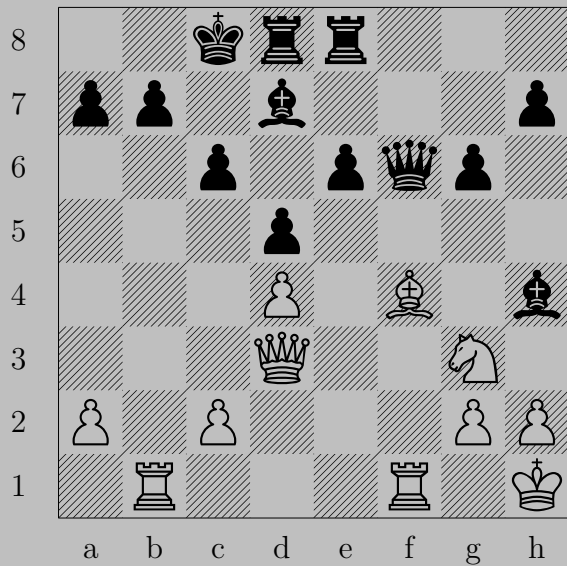
x8





♙xh6+

If ♖xh6, ♜g8. If ♙g7, ♙xg7.

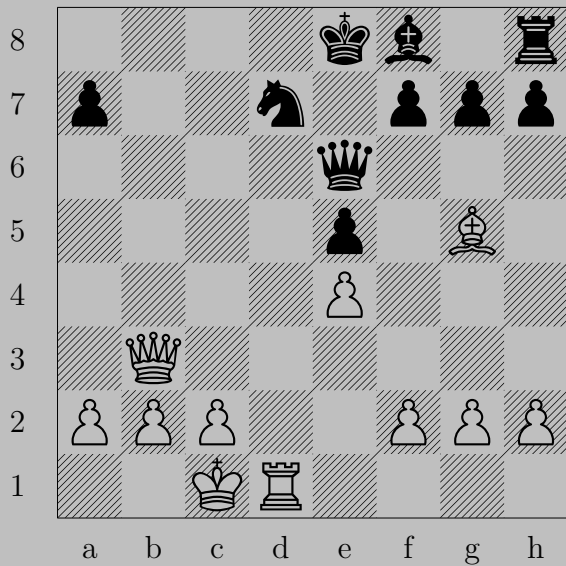


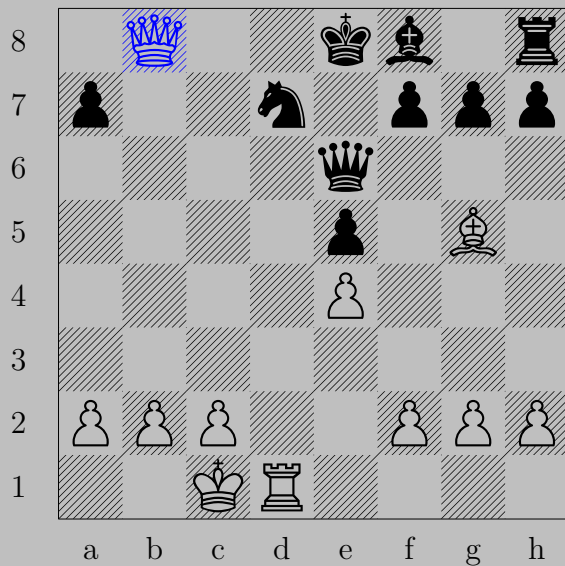


♙a6

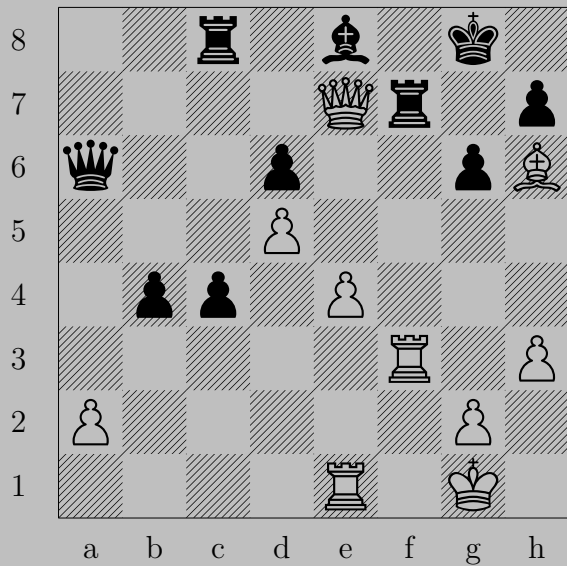
If ♖×a6, ♖b8.

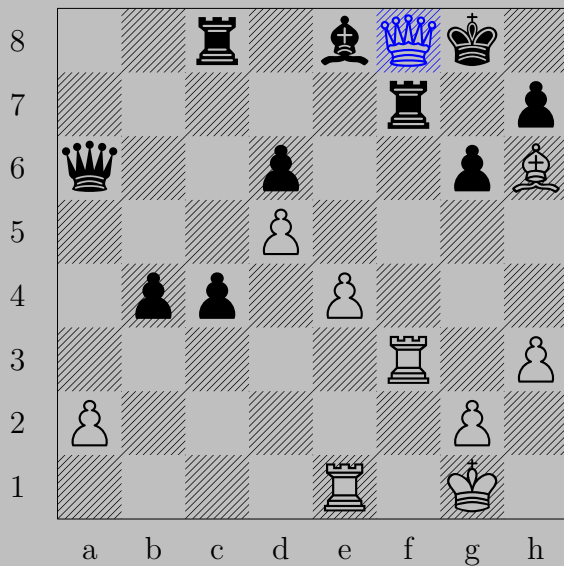
Otherwise, ♙×b7.



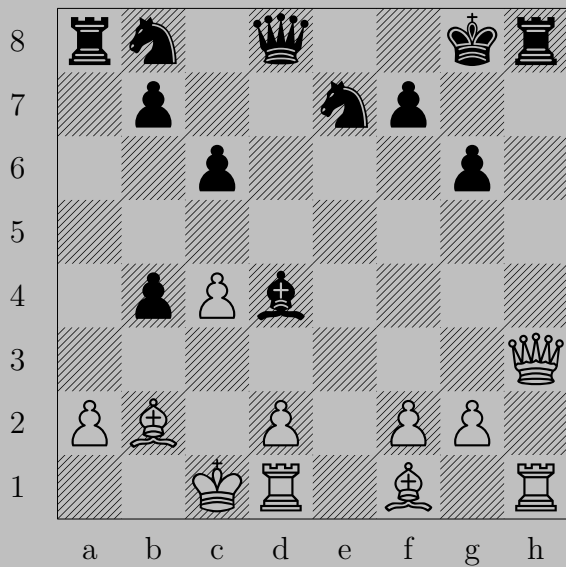


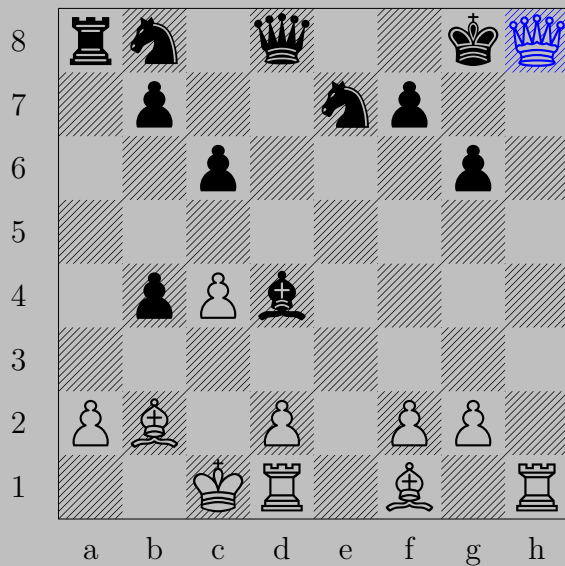
♙b8+, ♘xb8
♖d8





♙f8+, ♜xg8
 ♜xg8





♙×h8+, ♚×h8
♖×h8

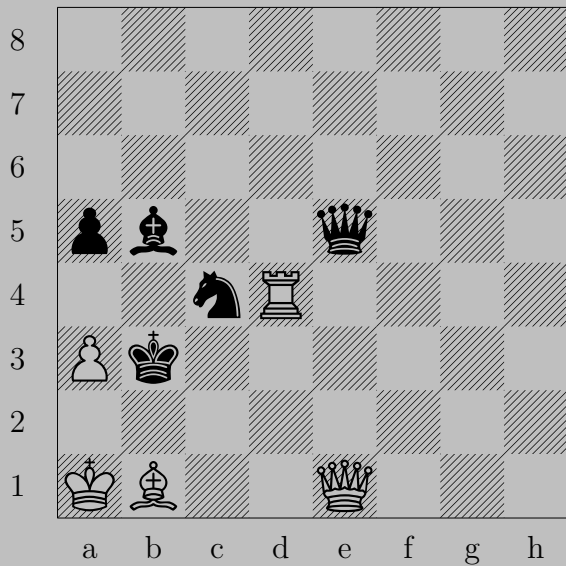


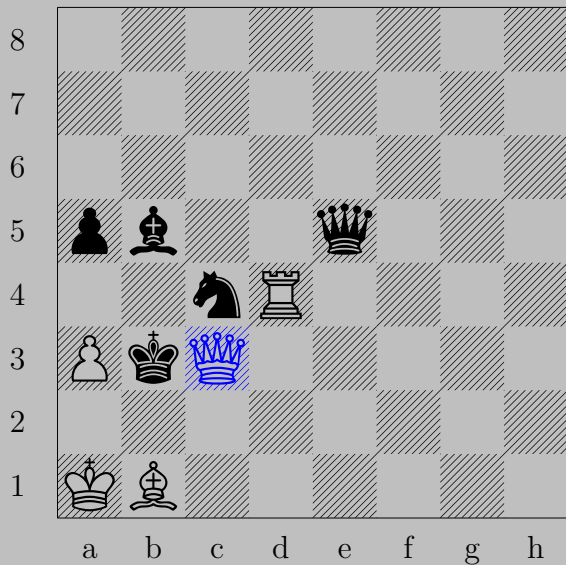


♔xg8+, ♔xg8
♖f8



$\text{♙} \times f6+, \text{♖} \times f6$
 $\text{♖} h7$

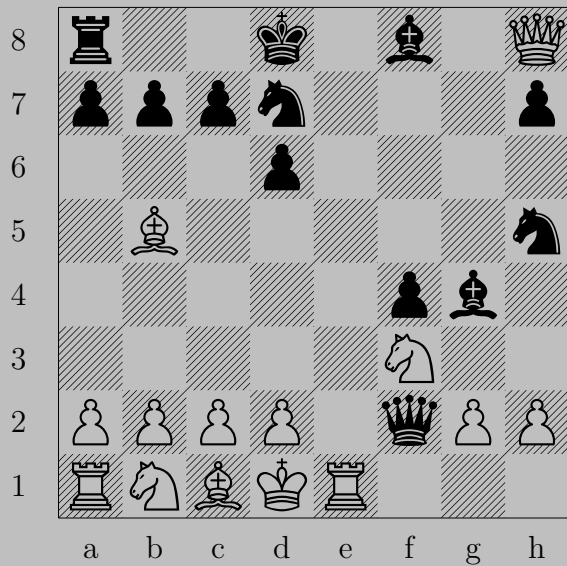


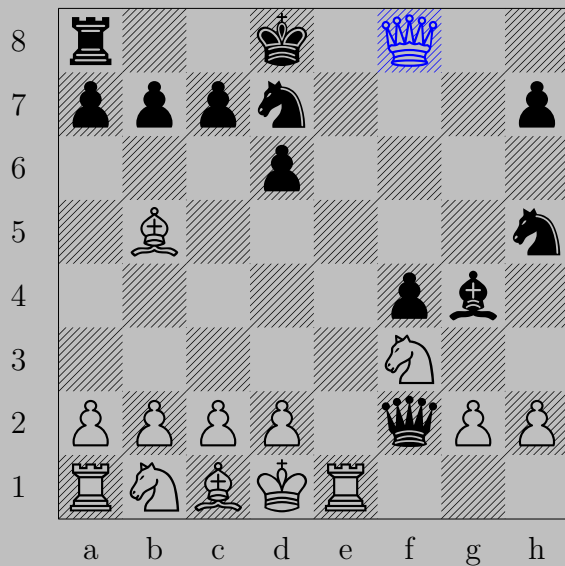


♙c3+, ♚xc3
♖d3

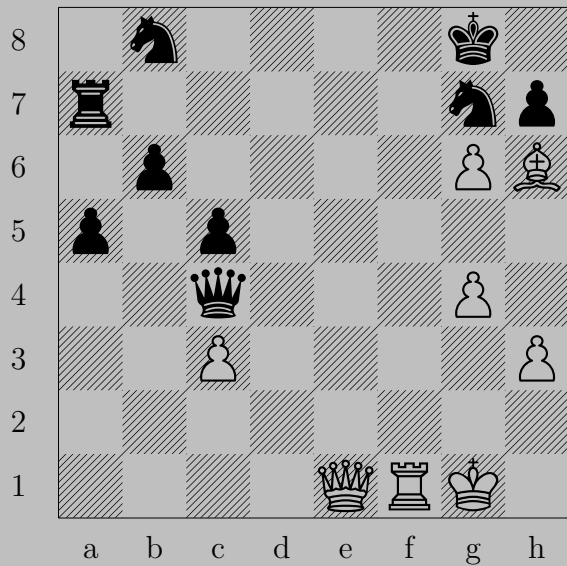


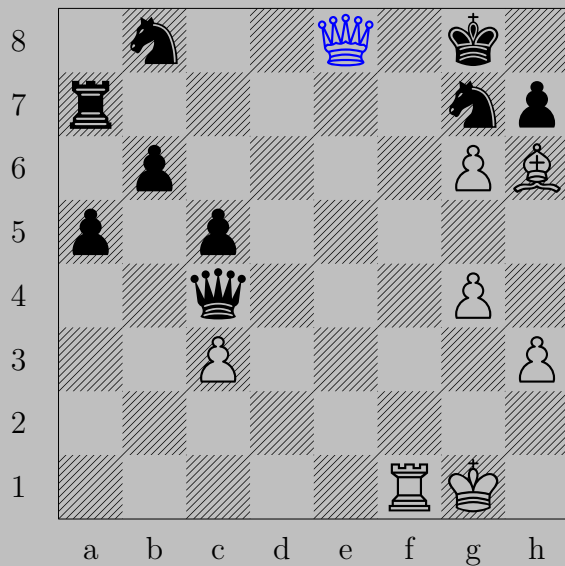
♔c8♚+, ♞xc8
♖d8



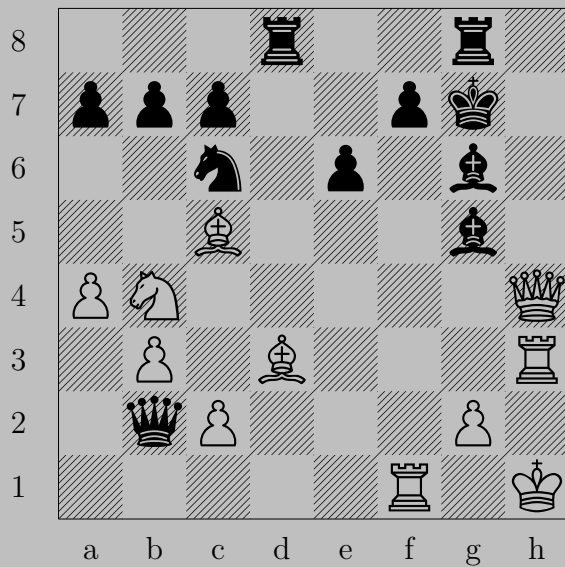


♙×f8+, ♘×f8
♖e8



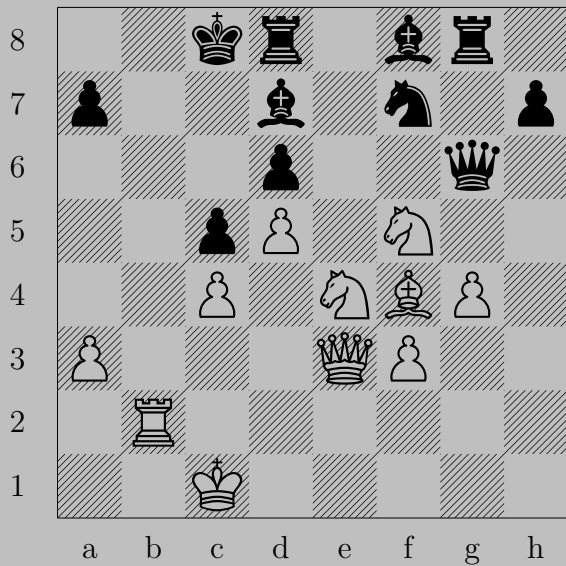


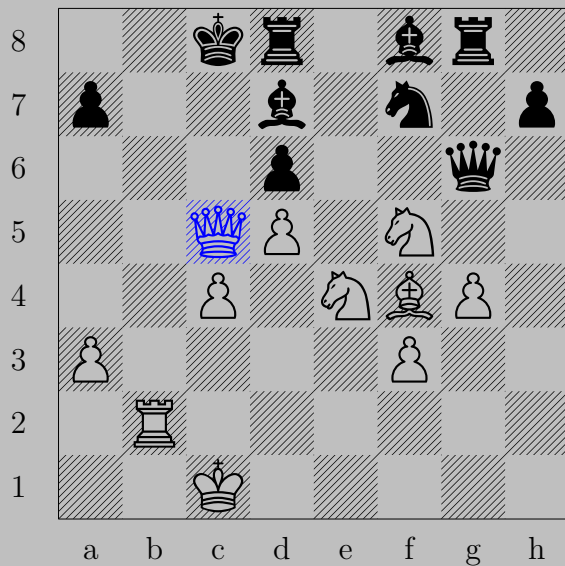
♙e8+, ♘xe8
♖f8





♔h7+, ♕xh7
♖xh7



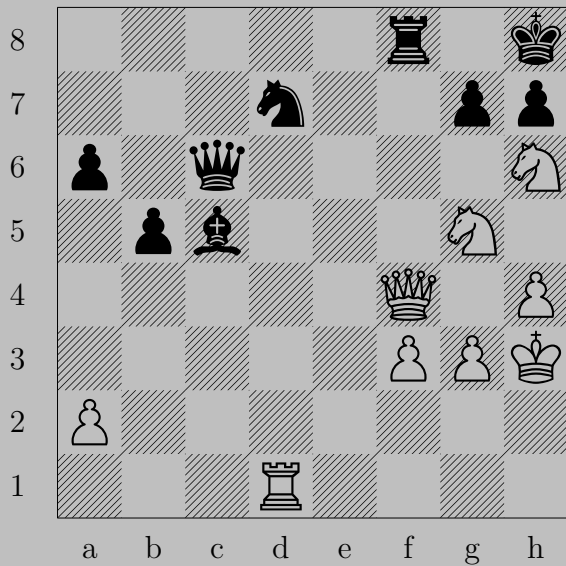


♙×c5+

If ♖×c5, ♜b8. If ♘c6, ♙×c6.

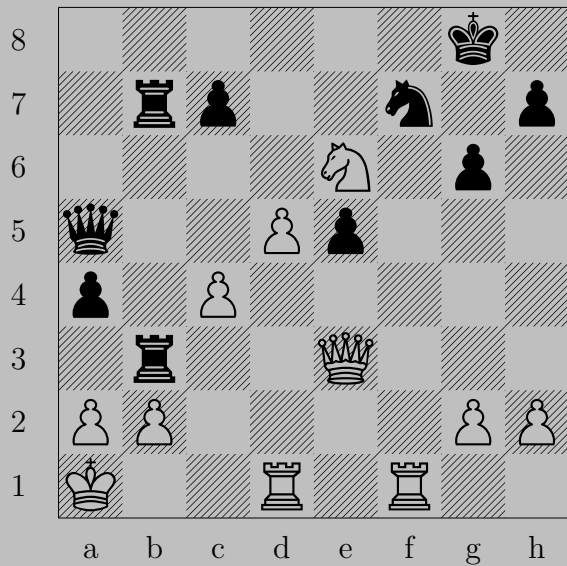


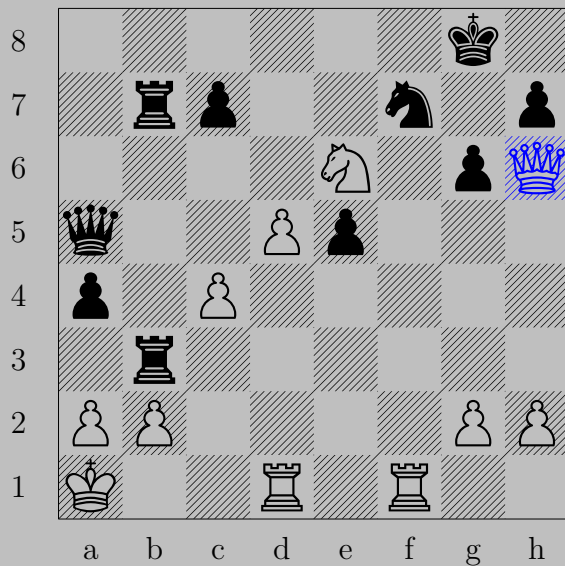
♙xh7+, ♖xh7
 ♞g6





♙×f8+, ♞×f8
 ♞(g5)f7





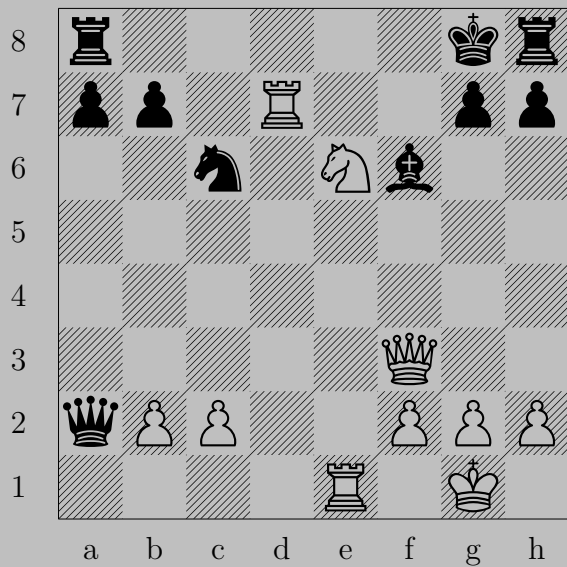
♚h6

If ♘×h6, ♖f8.

Otherwise, ♚g7.



♙xc8+ , ♞xc8 or ♚a7
 ♖xb7

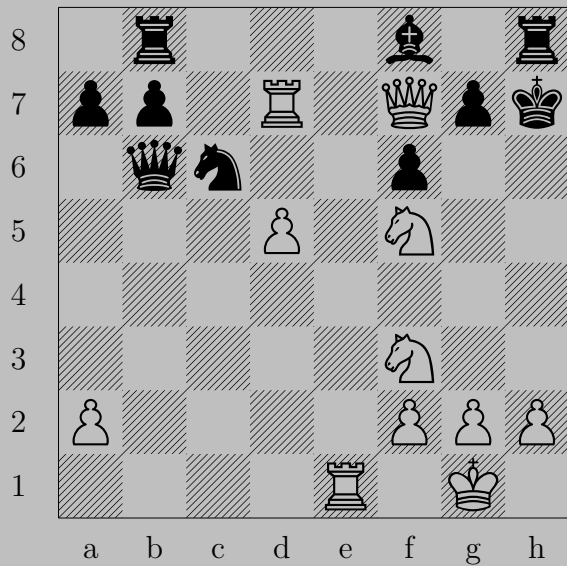


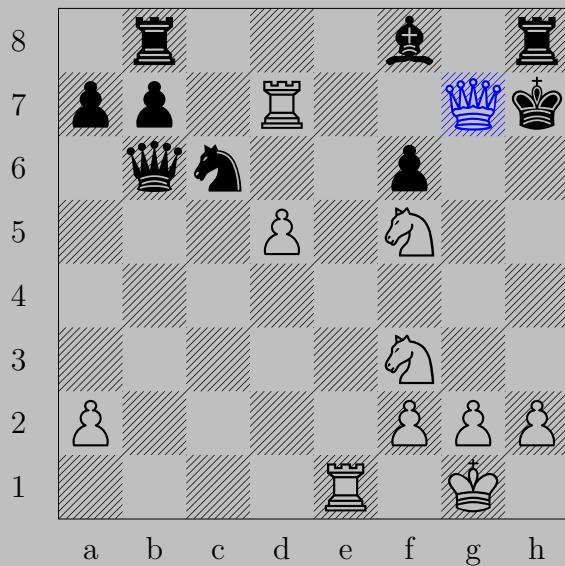


♙×f6

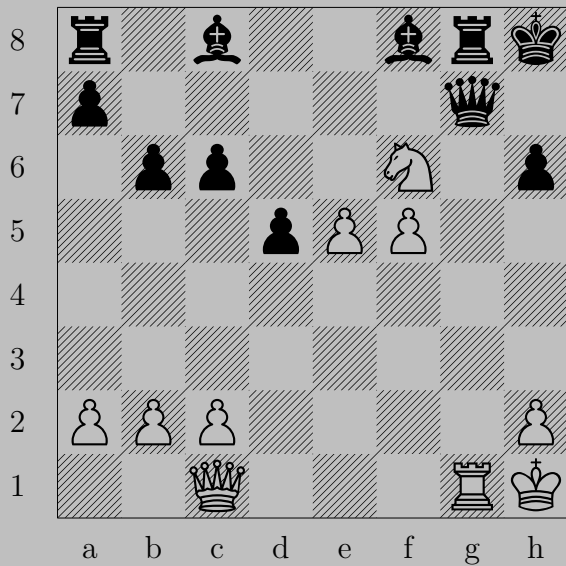
If ♖×f6 or ♖g6, ♜g7. If ♙×b2, ♜×g7.

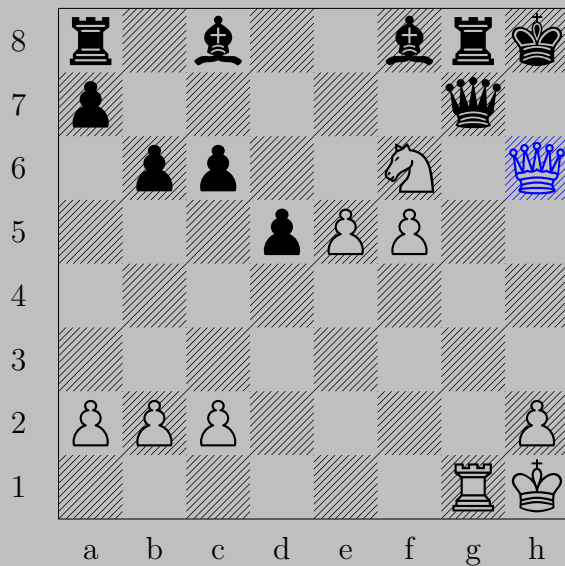
Otherwise, ♙×g7.





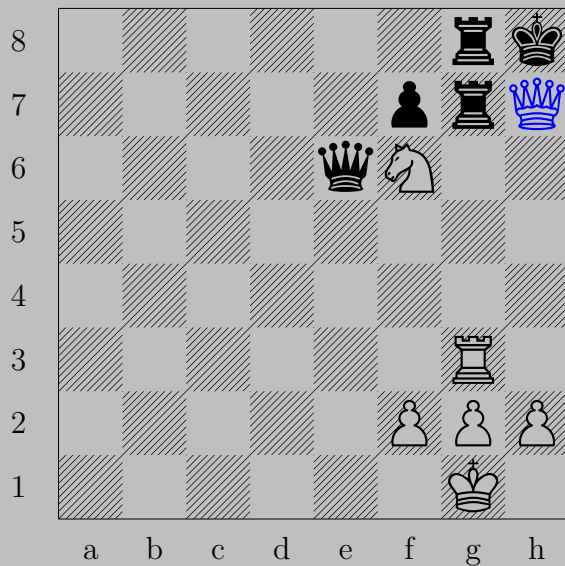
♔×g7+, ♖×g7
 ♖×g7



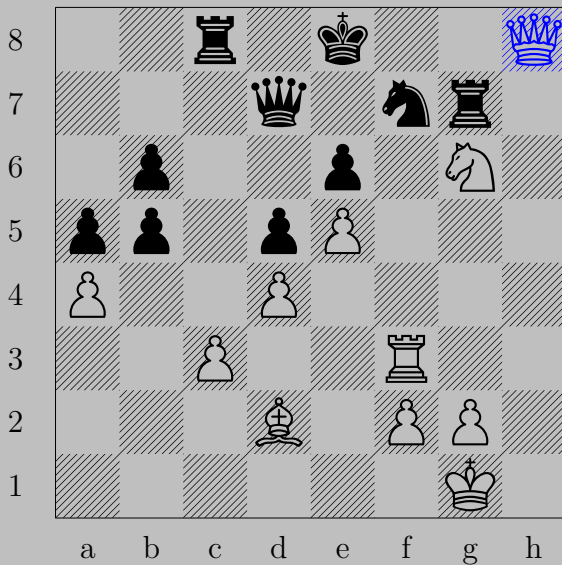


$\text{♔} \times \text{h6} +$

If $\text{♔} \times \text{h6}$, $\text{♖} \times \text{g8}$. If $\text{♔} \text{h7}$, $\text{♔} \times \text{h7}$.

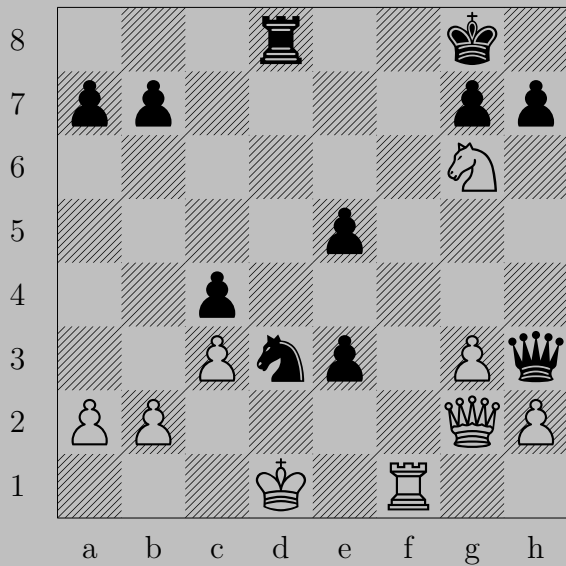


♔×h7+, ♖×h7
 ♖×g8



♔h8+

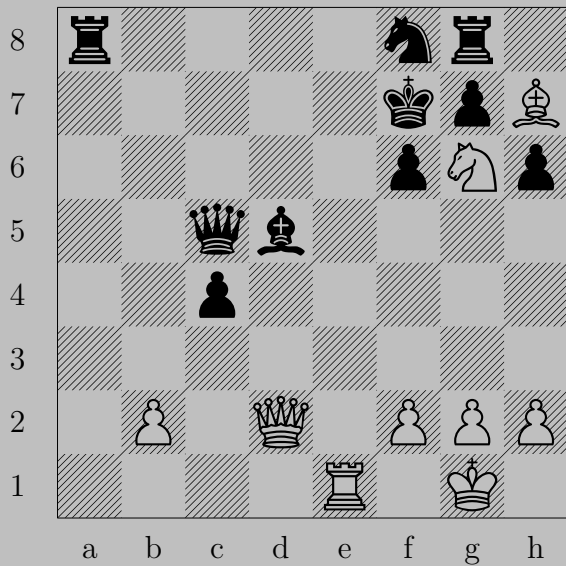
If ♘xh8, ♖f8. If ♖g8, ♔xg8.





♙d5+

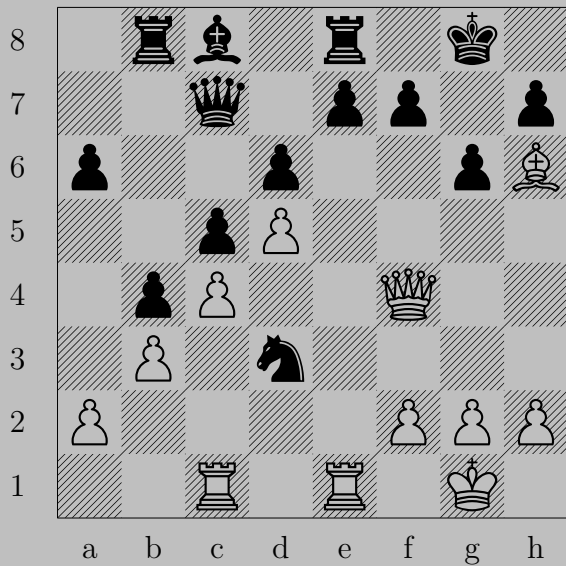
If ♖xd5, ♜f8. If ♙e6, ♙xe6.

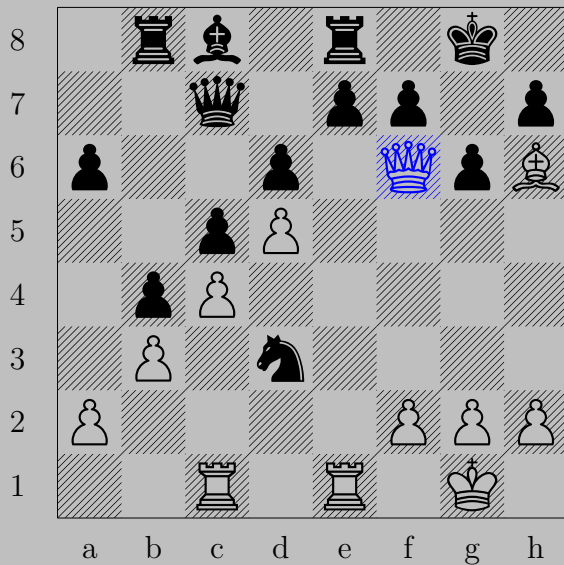




♙×d5+

If ♙×d5, ♖e7. If ♘e6, ♙×e6.





♙f6

If ♖×f6, ♜×e8.

Otherwise, ♙g7.