

Chess Puzzles

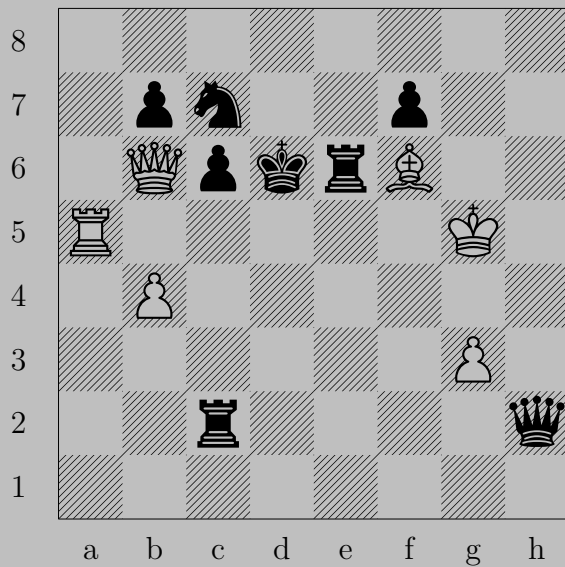
701-800

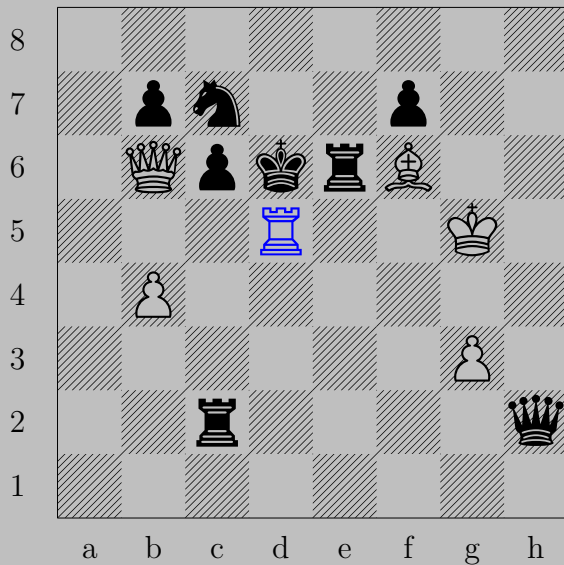
Mate in Two
White to Move

László Polgár

Links

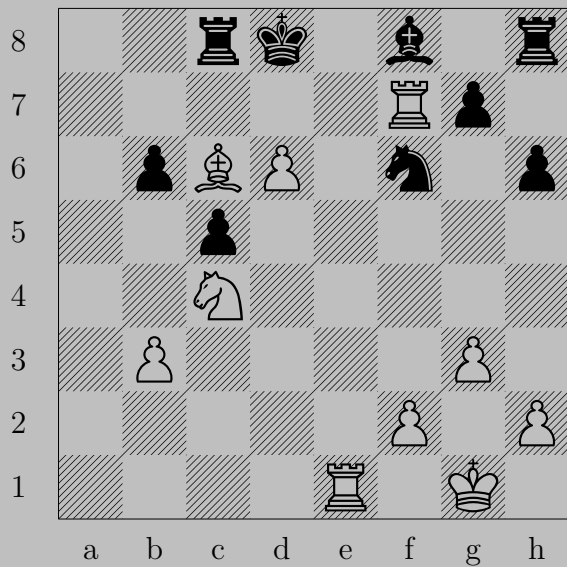
701	702	703	704	705	706	707	708	709	710
711	712	713	714	715	716	717	718	719	720
721	722	723	724	725	726	727	728	729	730
731	732	733	734	735	736	737	738	739	740
741	742	743	744	745	746	747	748	749	750
751	752	753	754	755	756	757	758	759	760
761	762	763	764	765	766	767	768	769	770
771	772	773	774	775	776	777	778	779	780
781	782	783	784	785	786	787	788	789	790
791	792	793	794	795	796	797	798	799	800

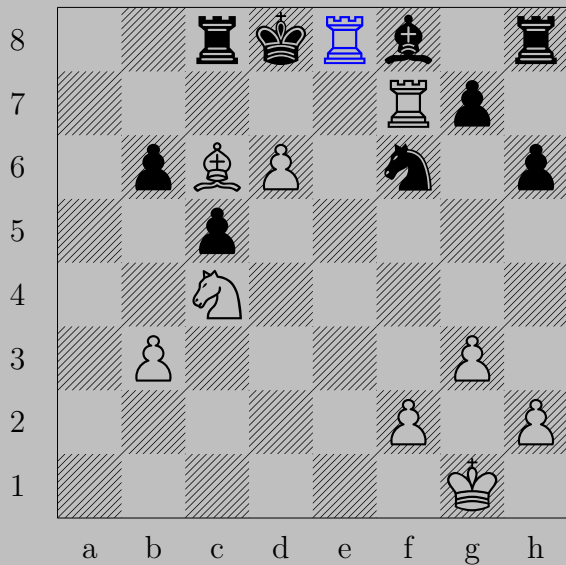




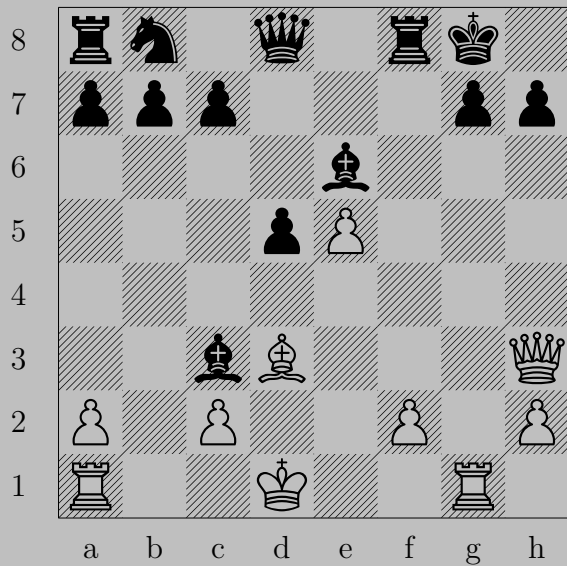
Rd5+

If Nxd5 , Qd8 . If Kxd5 , Qd4 .





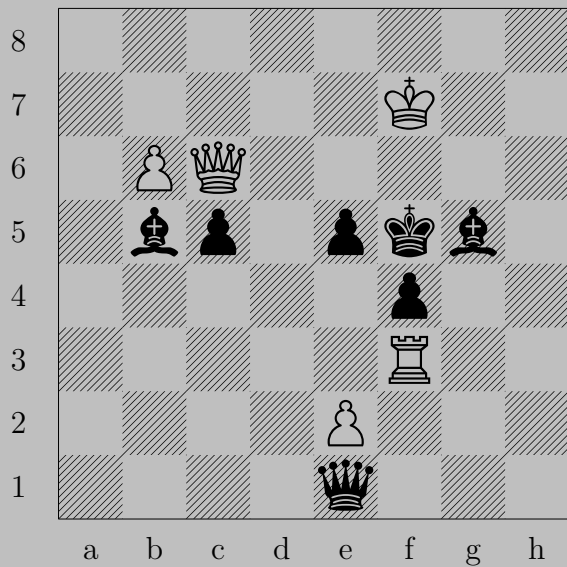
♖e8+, ♞xe8
♖d7

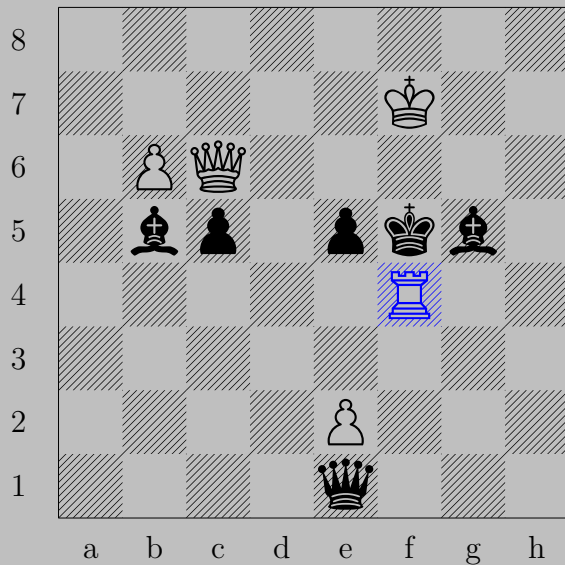




$\text{♖} \times \text{g}7+$, $\text{♔} \times \text{g}7$ or $\text{♔} \text{h}8$

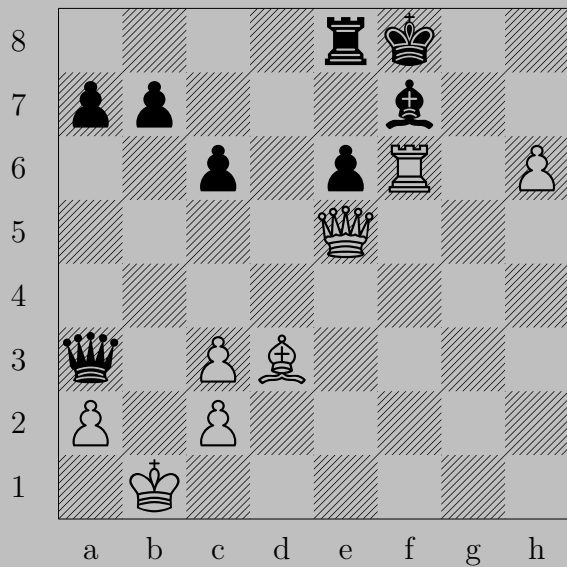
$\text{♔} \times \text{h}7$

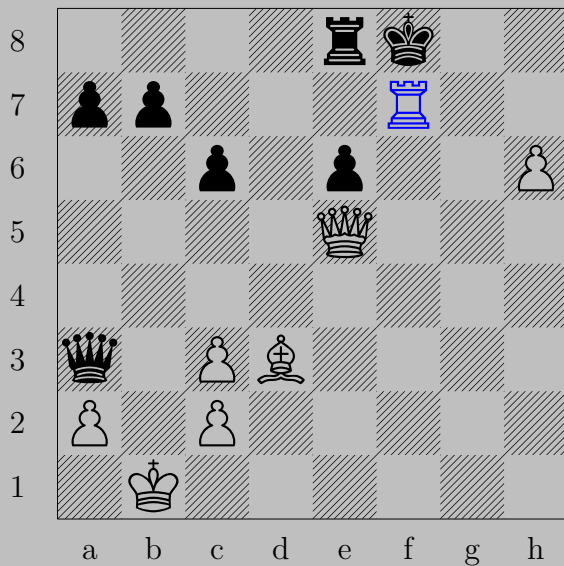




$\text{♖}\times\text{f4}+$

If $\text{♕}\times\text{f4}$, $\text{♔}\text{g6}$. If $\text{♗}\times\text{f4}$, $\text{♕}\text{e6}$. If $\text{♚}\times\text{f4}$, $\text{♕}\text{f3}$.

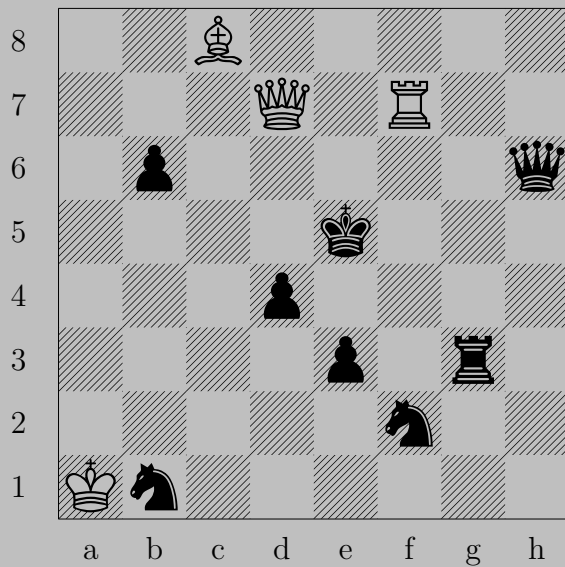


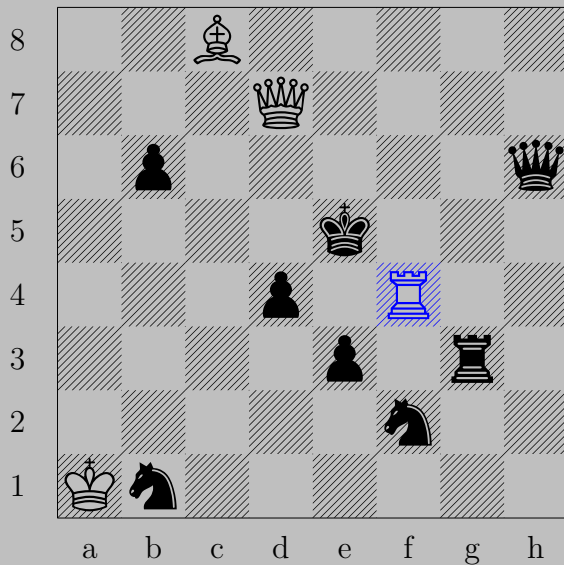


♖xf7+, ♔xf7 or ♔g8
 ♕g7



♖b8+, ♞x♞8
♖c7

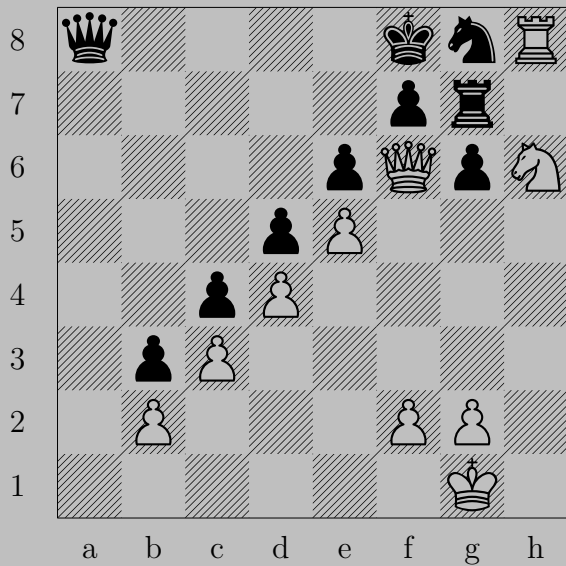


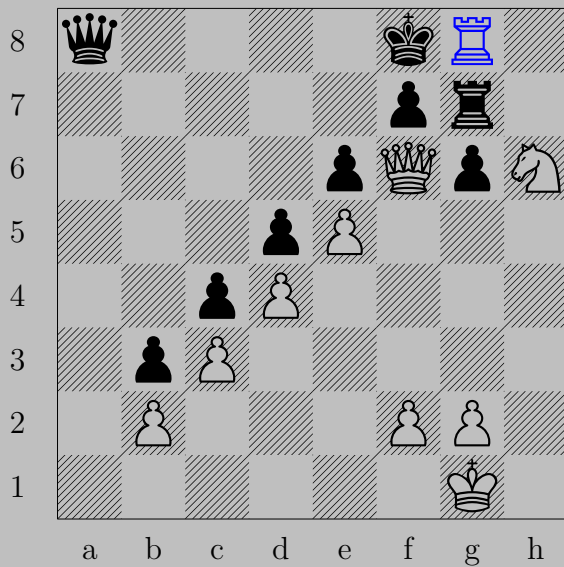


Rf4

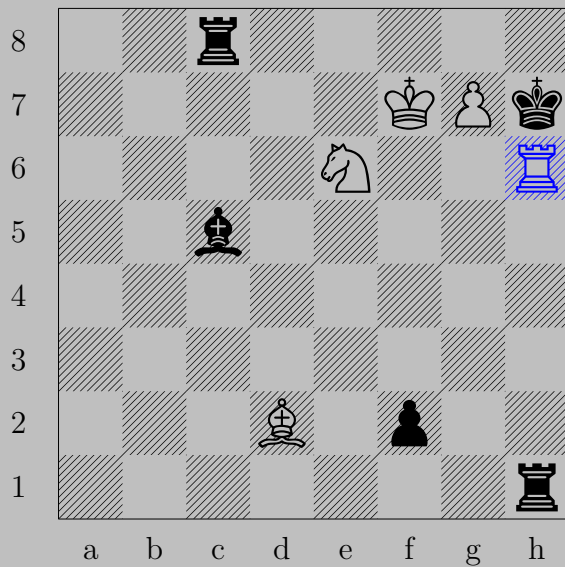
If Qxf4 , Ke6 . If Kxf4 or Qd6 , Qf5 .

Otherwise, Qxd4 .

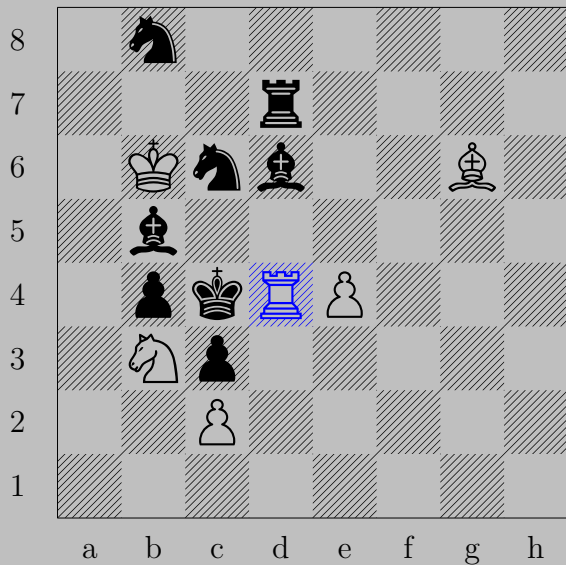




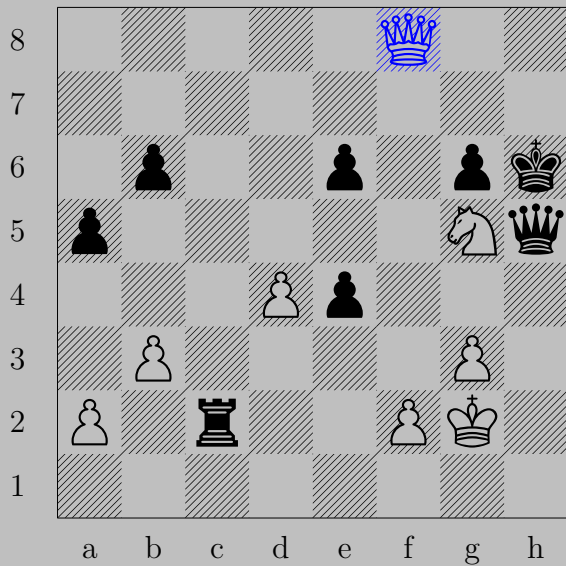
♖xg8+, ♖xg8
 ♔xg7



♖×h6+, ♖×h6
 ♞g5

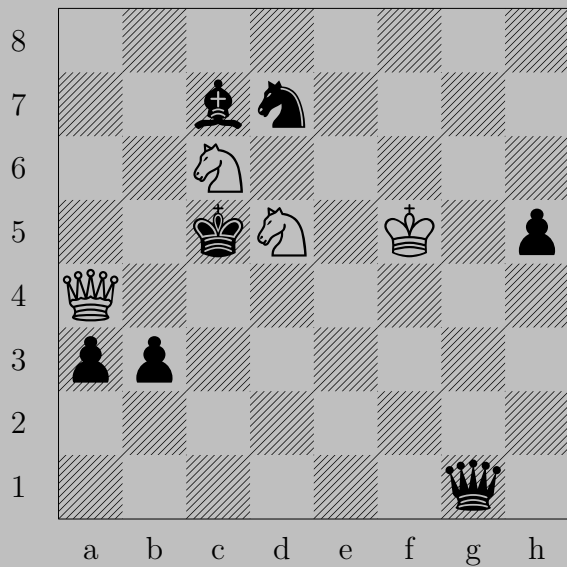


Rd4+ , Nxd4
 Na5



♙f8+, ♔xg5

♙f4



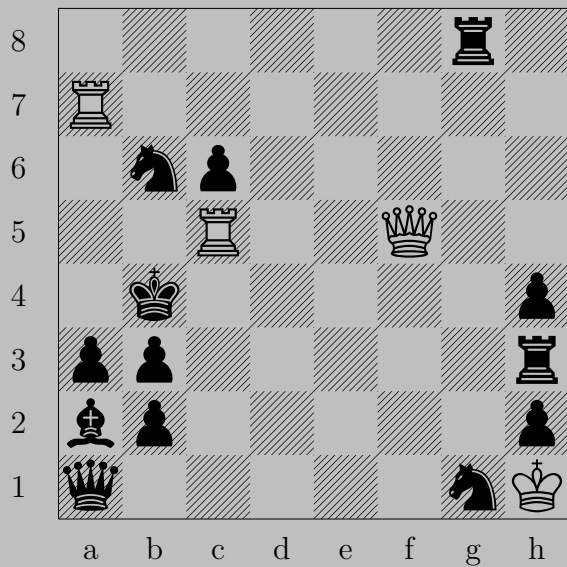


♙b4+, ♖xc6 or ♖xd5
♞e7



♙h7+, ♚xg6 or ♚g8

♙xh6





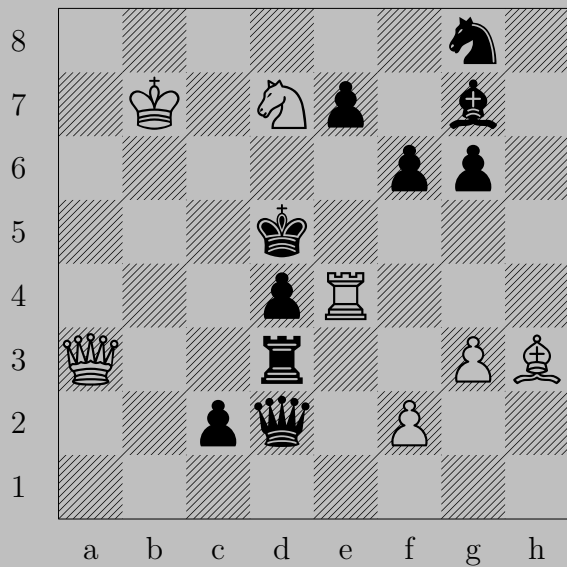
♔f4+

If ♕xc5, ♖a5. If ♞c4, ♔xc4.



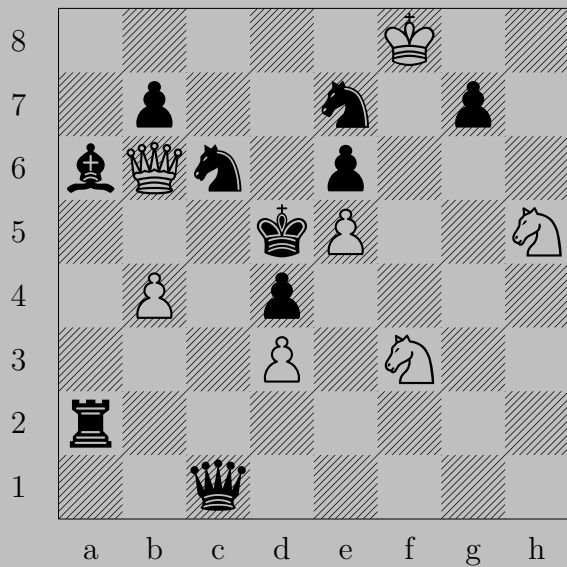


♙f8+, ♖x8
 ♖x8

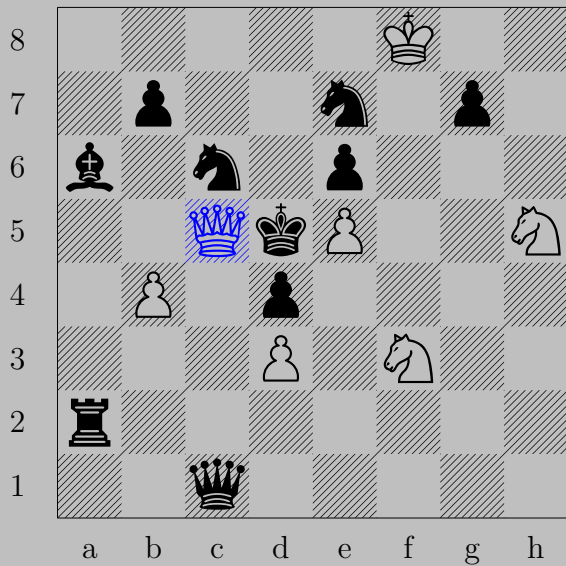




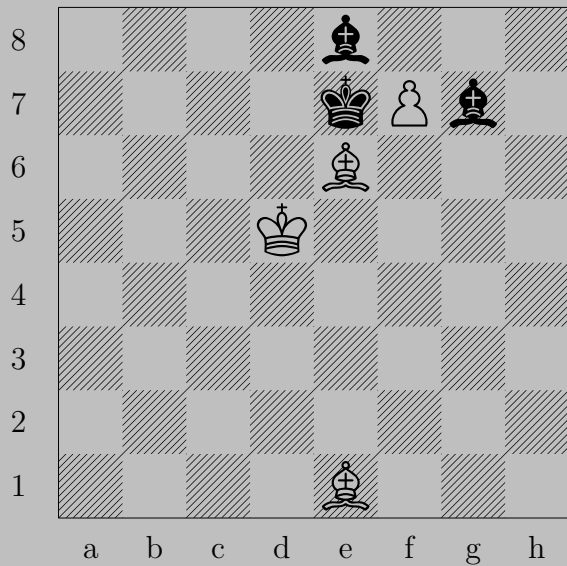
♙c5+, ♚xe4
♙c6

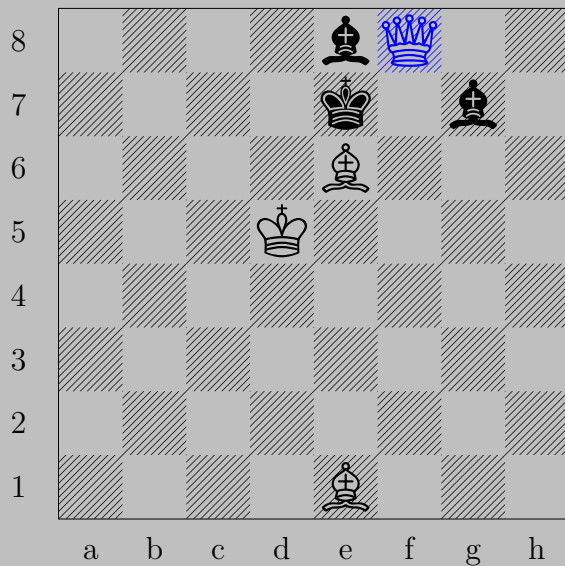


717



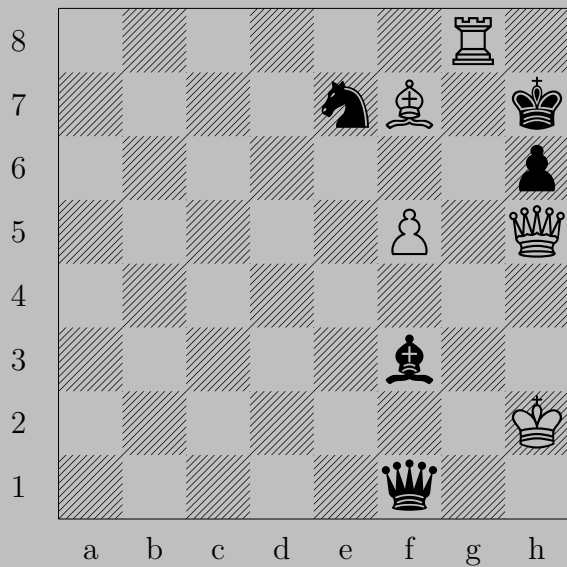
♚c5+, ♚xc5
♞f4

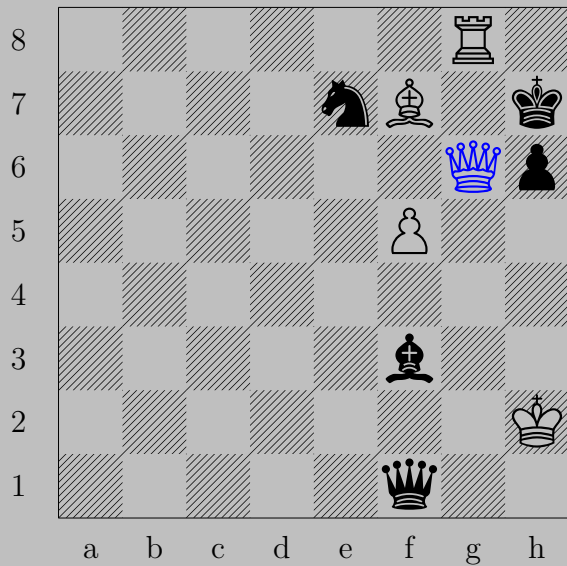




$\triangle f8$ ♔+

If ♔×f8, ♔h4. If ♔×f8, ♔b4. If ♔d8, ♔a5.

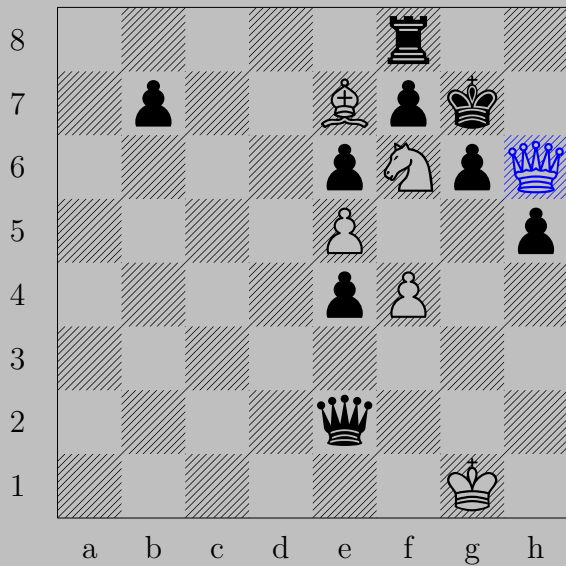




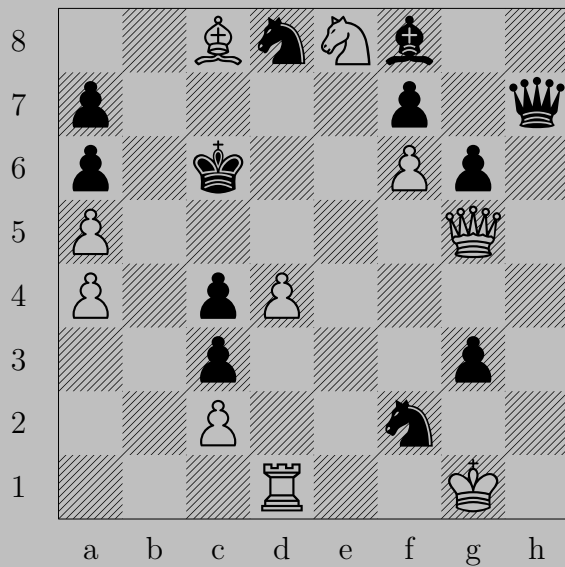
♙g6+, ♞xg6
♟xg6



$\text{K}e7+, \text{K}xe7$
 $\text{B}a3$



♔h6+, ♔×h6
♗×f8





♚c5+, ♙xc5

♙d5



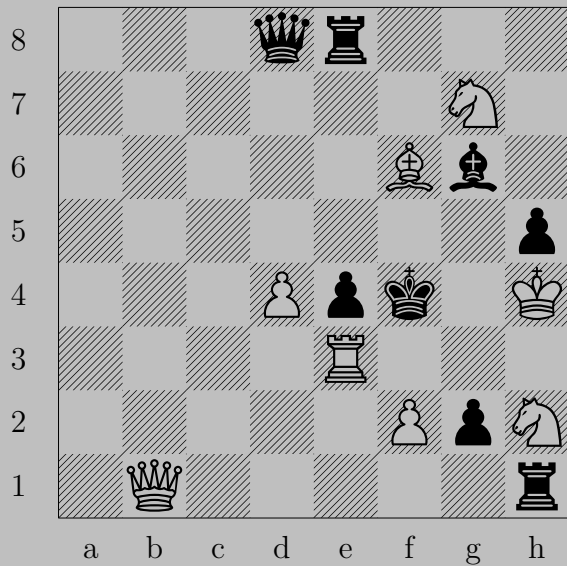
♙c6

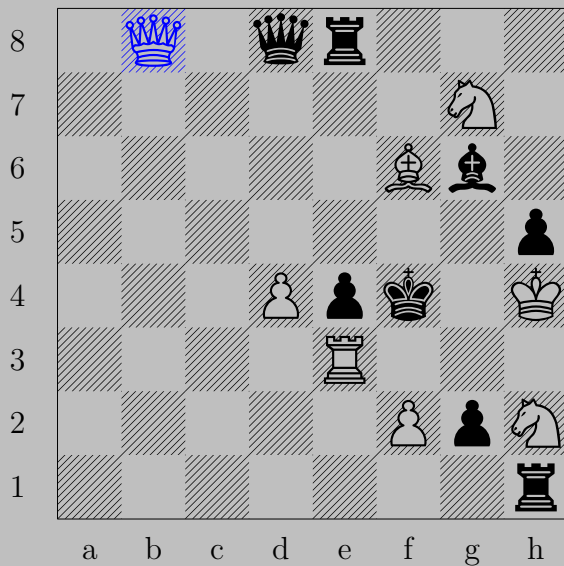
If ♖xc6, ♗xc6.

Otherwise, ♙xb7.



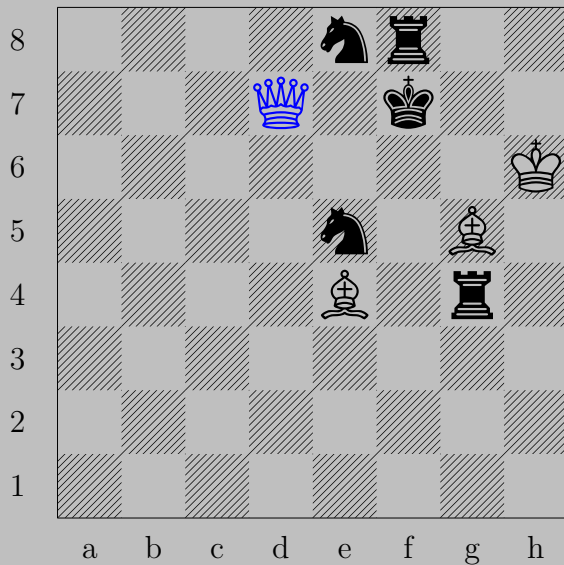
♚d5+, ♙x d5
♘b2





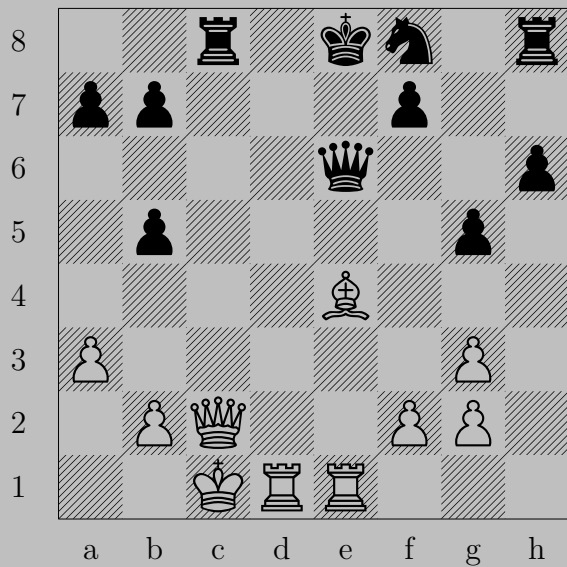
♙b8+

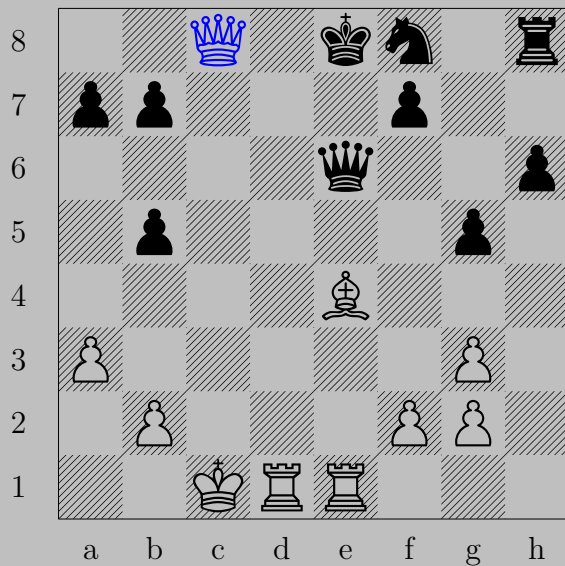
If ♙xb8 or ♙c7 or ♙d6, ♕g5. If ♖e5, ♙xe5.



♙xd7+

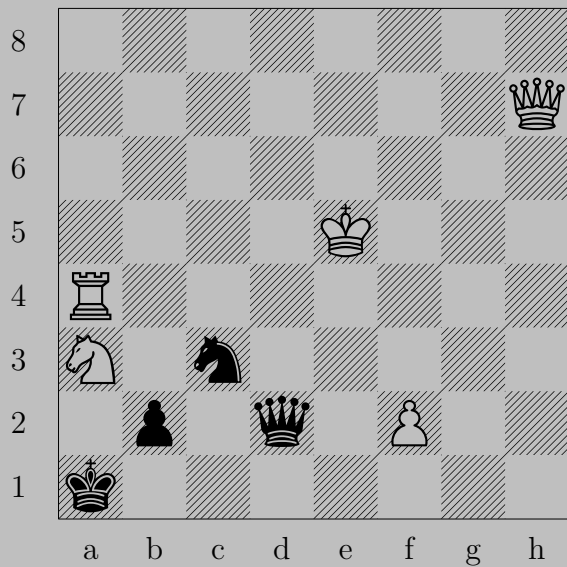
If ♘xd7, ♙d5. If ♚g8, ♙h7.





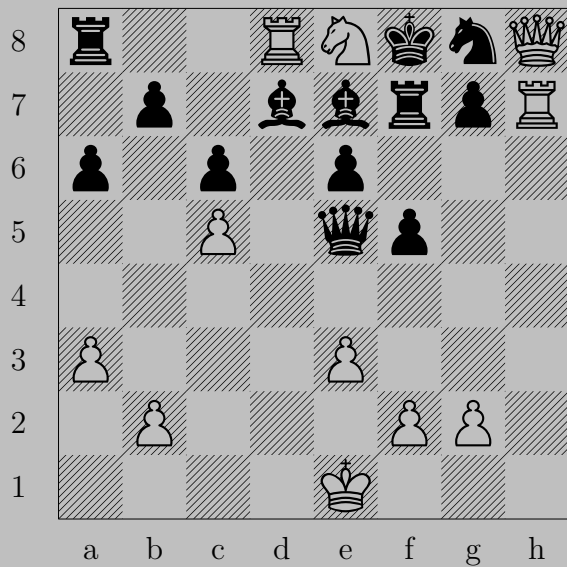
xc8+

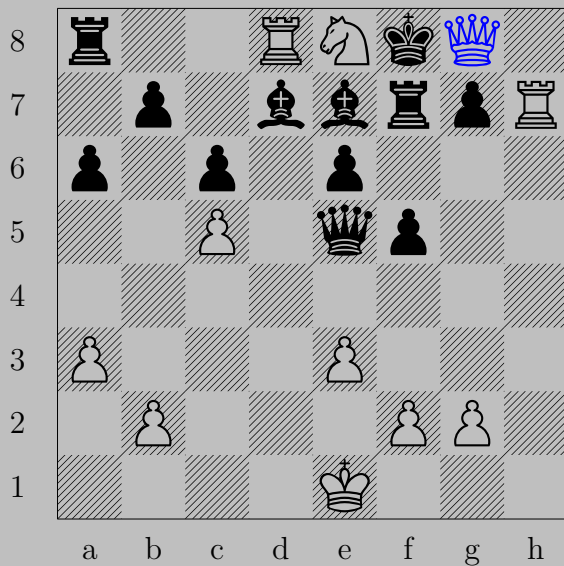
If xc8+, c6. If e7, d8.








♔b1+, ♘x b1
♘c2





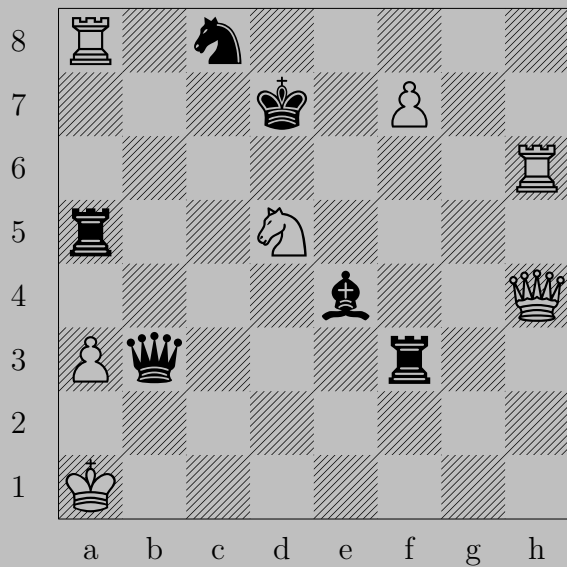
xg8+, xg8
f6

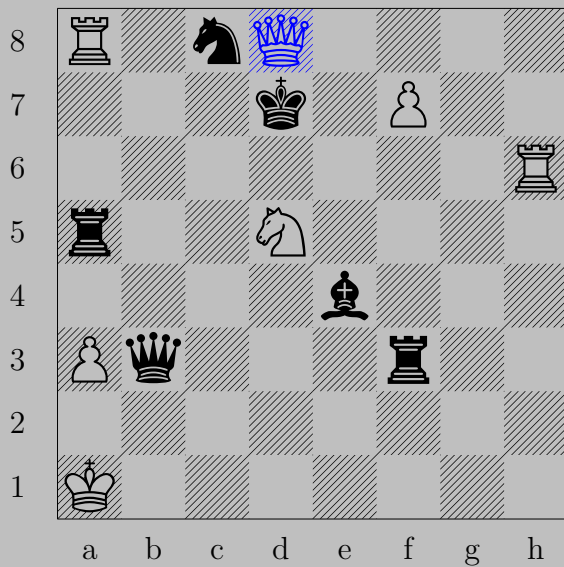


♔d5+, ♖x5
♙x5

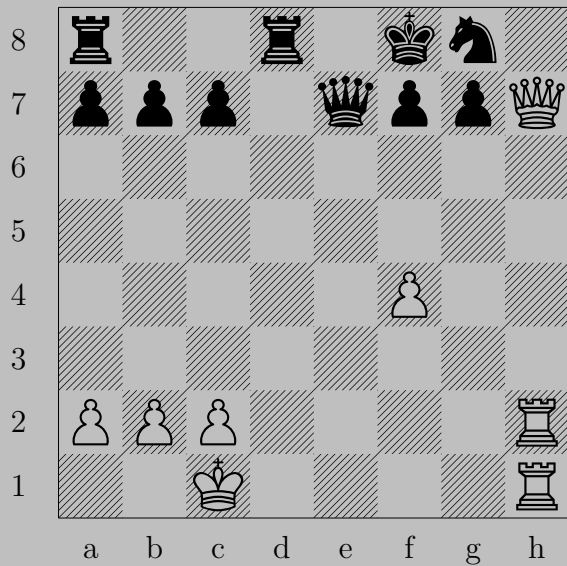


♔c5+, ♔xc5
♞xe6





♔e8+, ♕xe8
♖d6

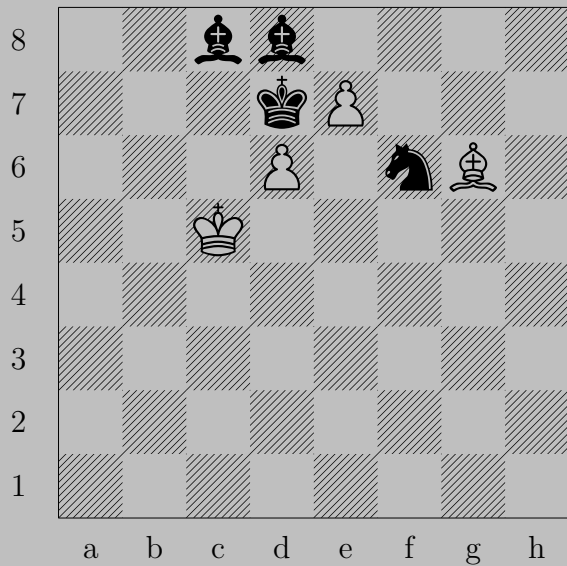




$\text{♙} \times \text{g8} +, \text{♚} \times \text{g8}$
 $\text{♖} \text{h8}$




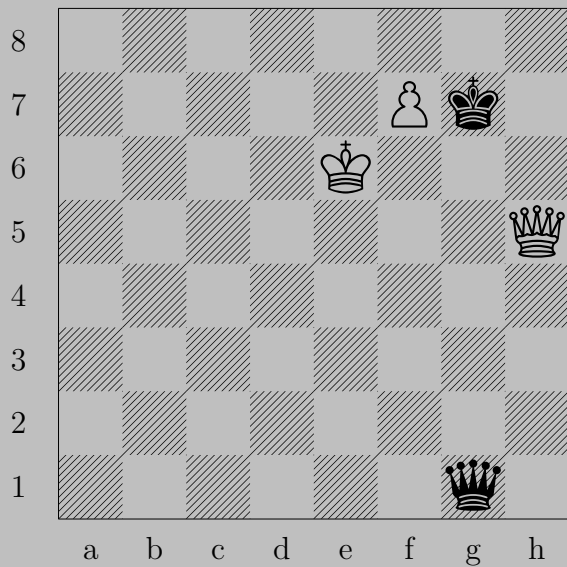
♙f6+, ♚×f6
♖g8

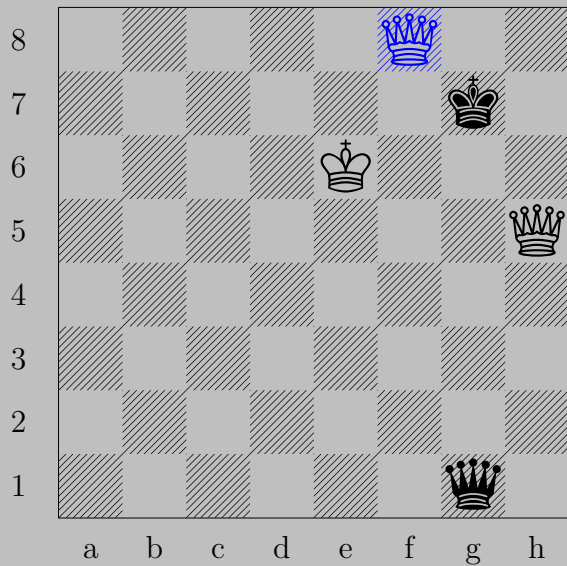


735

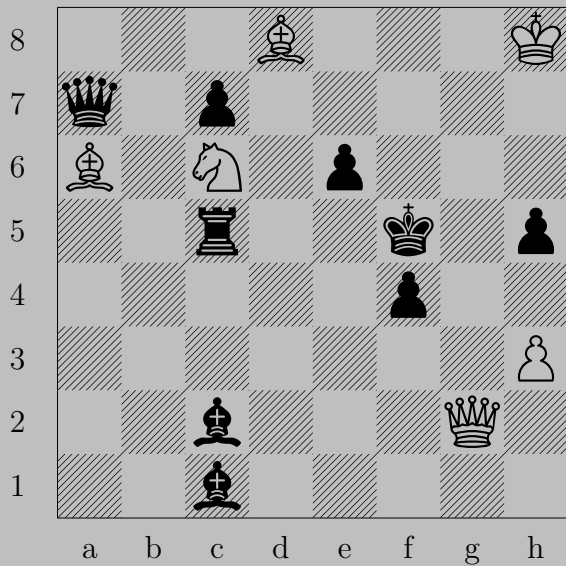


$\triangleleft e8$ +, $\triangleleft xe8$
 $\triangleleft f5$

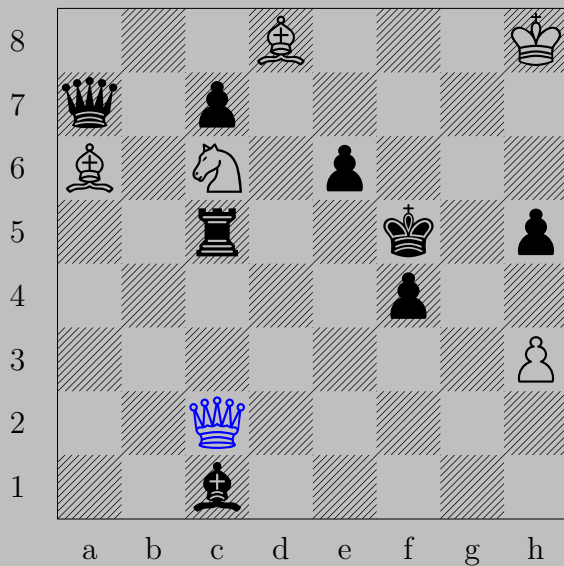




$\text{♔f8} \text{♚+}, \text{♚} \times \text{f8}$
 ♚f7



737



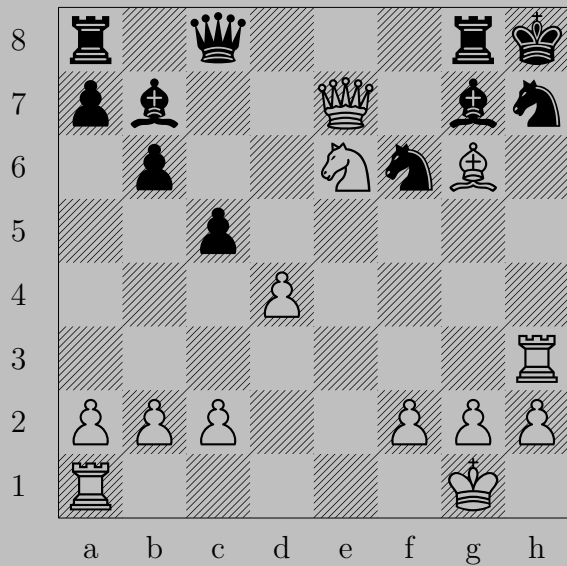
♙×c2+, ♖×c2
♗d3





♙b5+

If ♖xb5, ♘c6. If ♔xb5, ♖xb3.

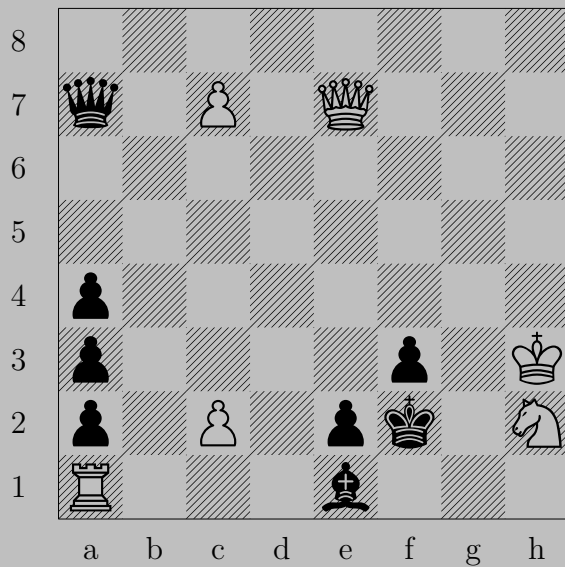


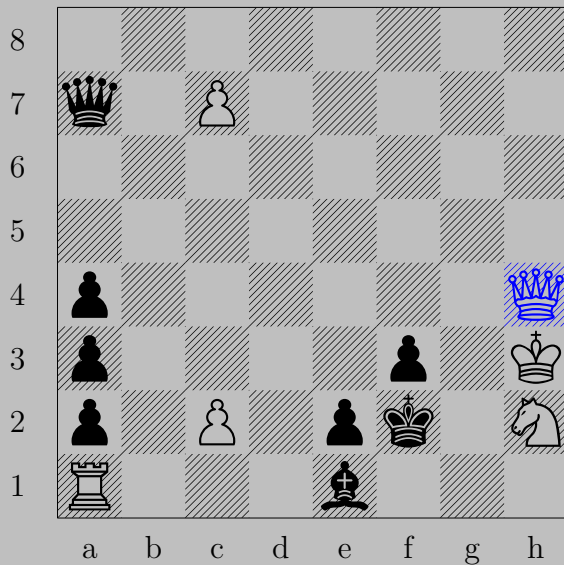


♙×f6

If ♖f8, ♗e8 or ♖d8, ♙×g7.

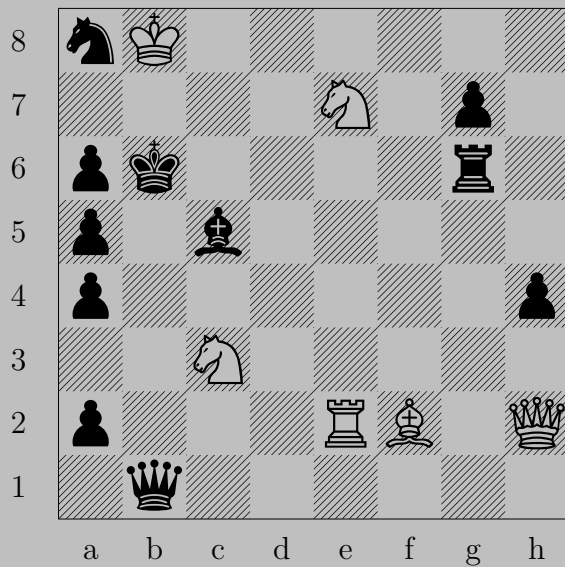
Otherwise, ♖×h7.

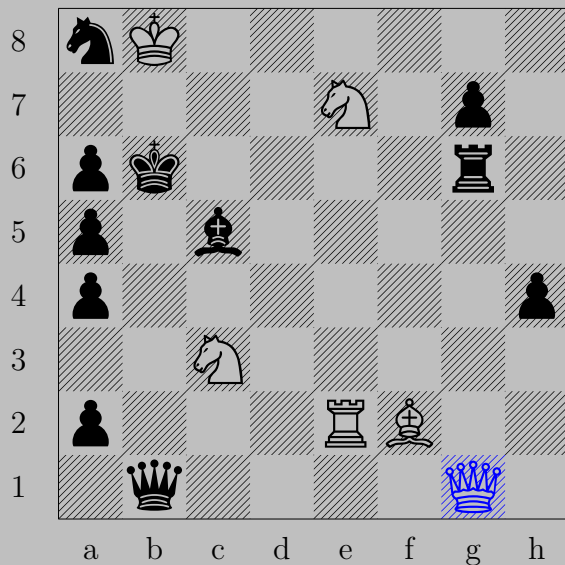




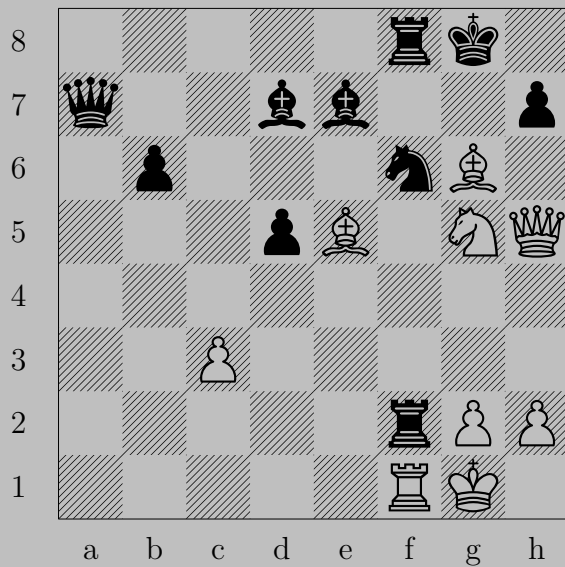
♔h4+

If ♔g1, ♖xe1. If ♔e3, ♘f1.



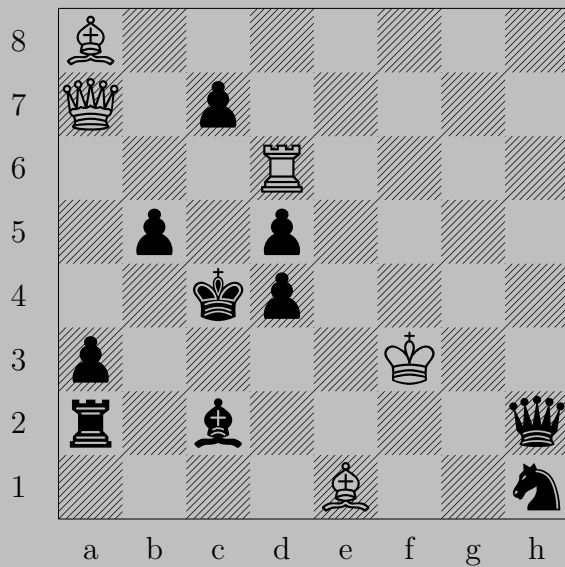


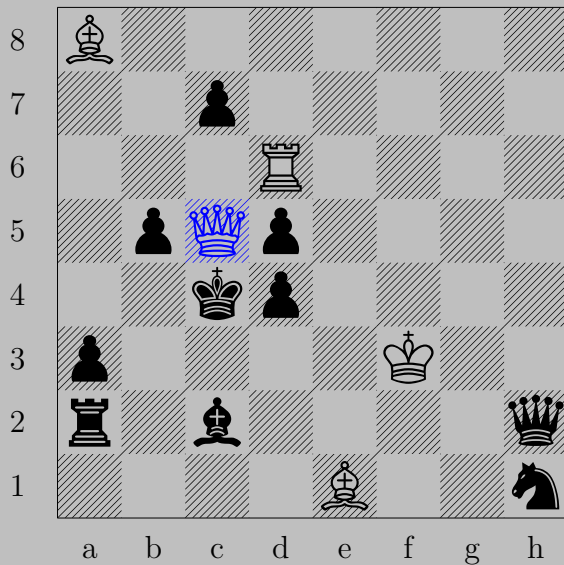
♔g1
 If ♖xg1 or ♖g5, ♜e6. If ♔xg1 or ♔f5, ♜b2. If ♙xf2, ♔xf2. If ♜c6, ♘(e7)d5.
 If ♔b5, ♘(c3)d5. If ♔b4, ♔xg6. Otherwise, ♙x♙.





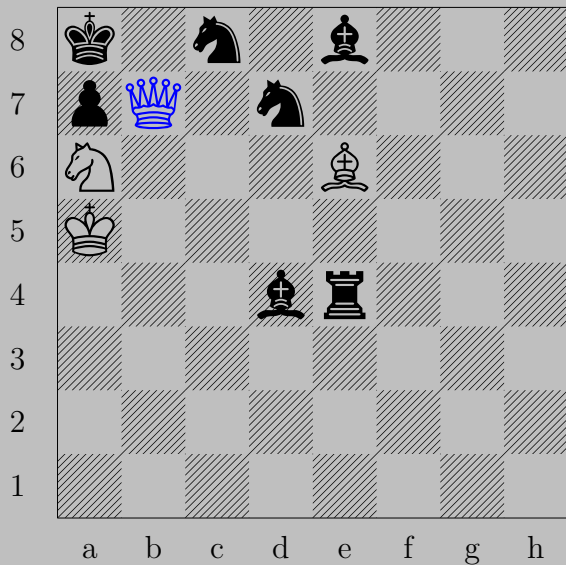
♔×h7+, ♞×h7
 ♞×h7



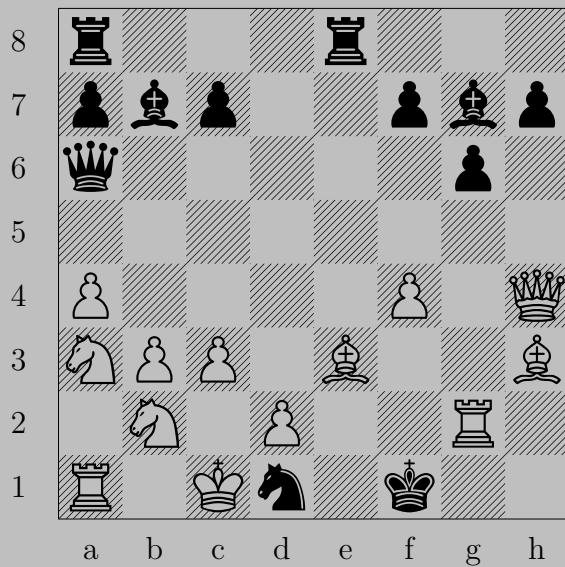


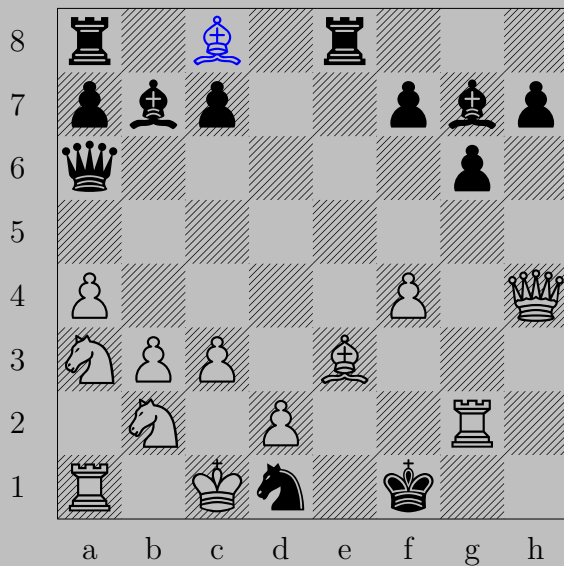
♙c5+

If ♖xc5, ♖c6. If ♖b3 or ♖d3, ♙xb5.



♚×b7+, ♔×b7
♞d5

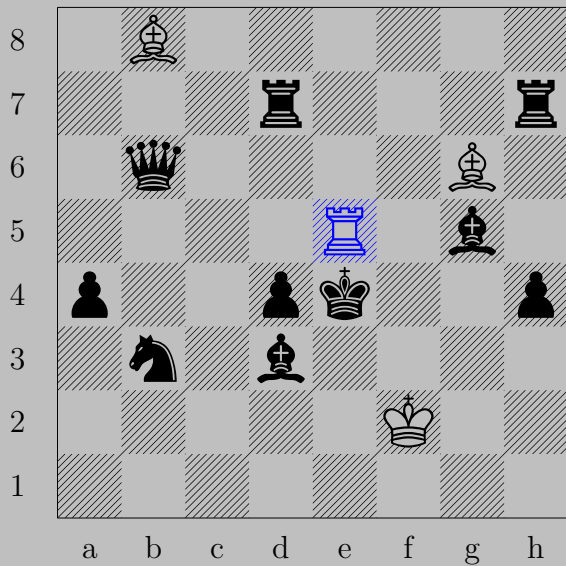




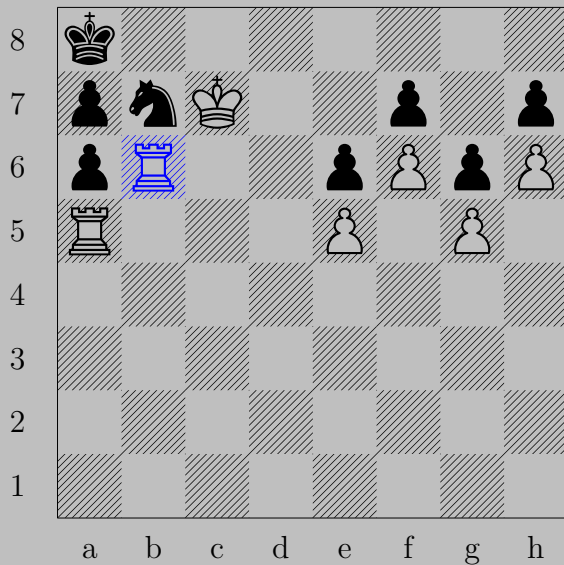
♞c8

If ♞xg2 , ♞xa6 . If ♚xg2 , ♞h3 . If ♞f2 , ♞xf2 .

Otherwise, ♞h1 .



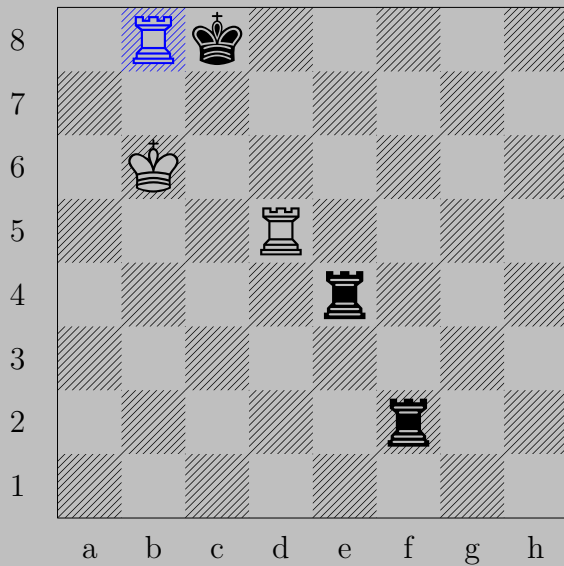
$\text{R}e5+$, $\text{K}f4$
 $\text{R}e4$



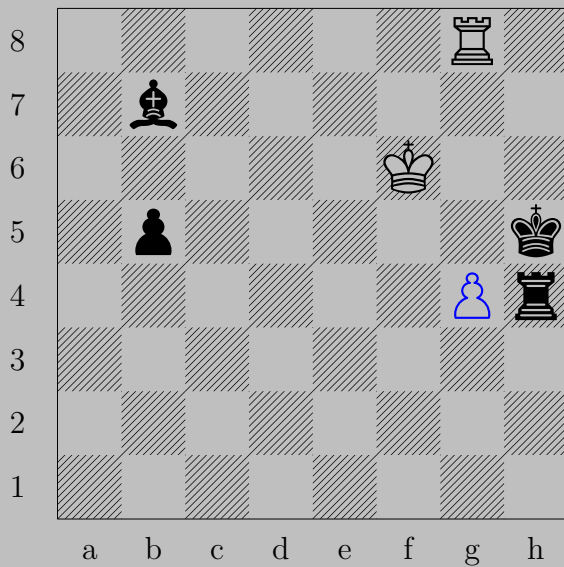
$\text{♖} \times b6$

If $\text{♗} \times b6$, $\text{♖} \times a6$.

Otherwise, $\text{♖} b8$.



$\text{Rook} \times \text{b8}+$, $\text{King} \times \text{b8}$
 $\text{Rook} \times \text{d8}$

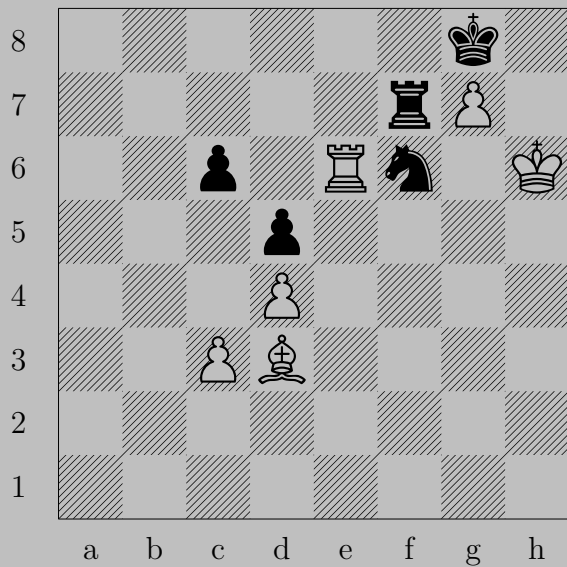


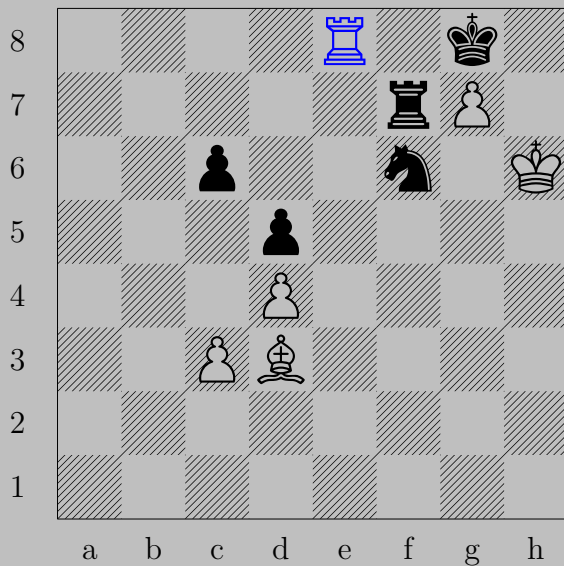
♔g4+, ♖xg4 or ♚h6
♜h8

750



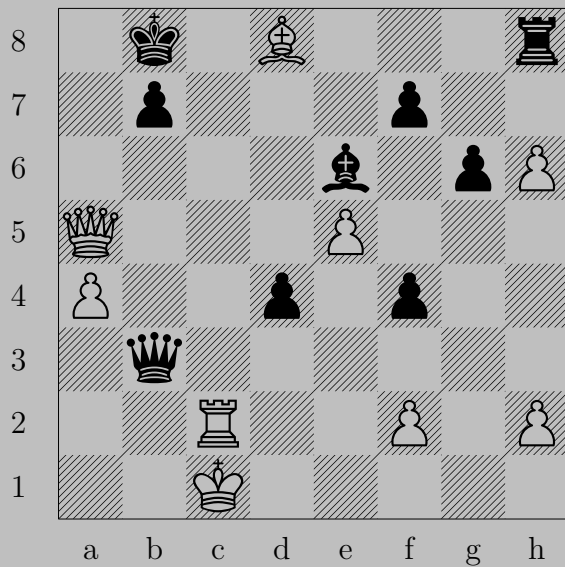
♙e5+, ♖×e5 or ♔g8
♖d8

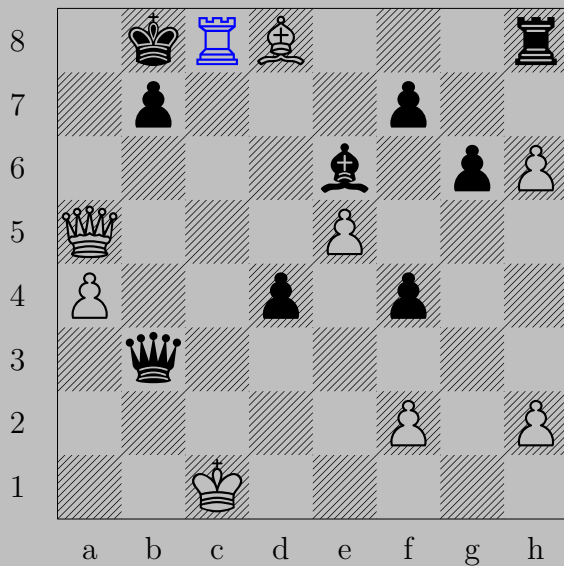




$\text{R}e8+$

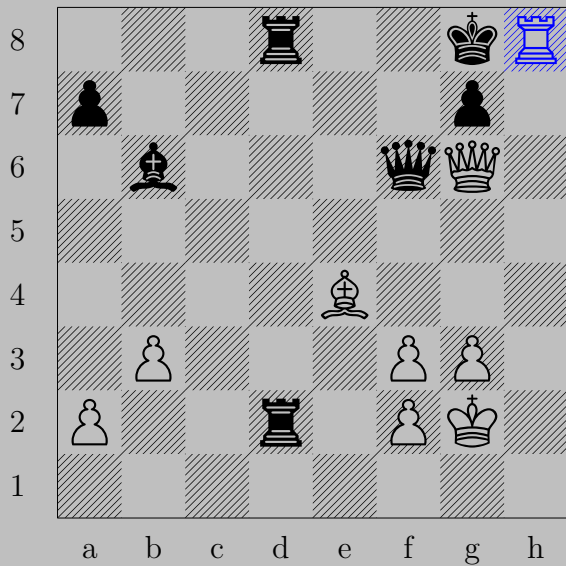
If $\text{N}xe8$, $\text{K}h7$. If $\text{R}f8$, $\text{R}xf8$.



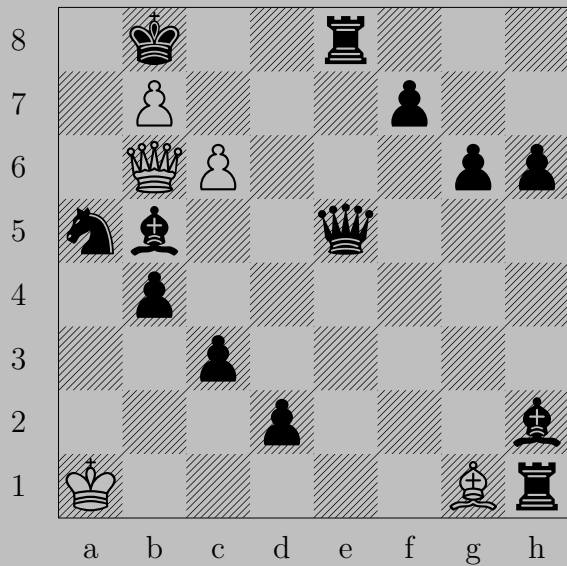


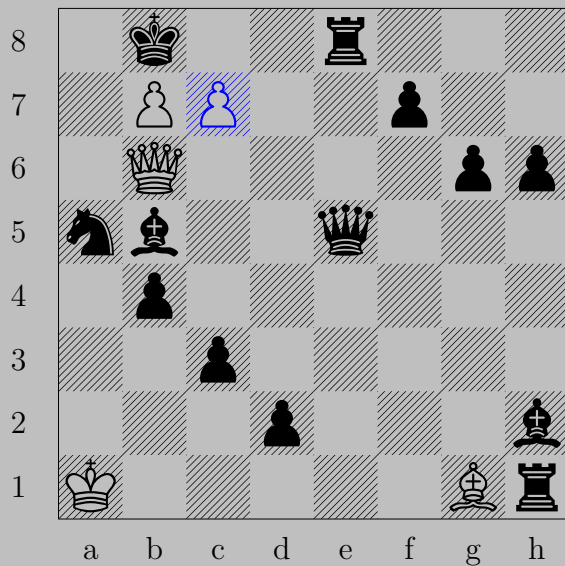
Rc8+

If Kxc8 , Kc7 . If Kxc8 , Qc7 .

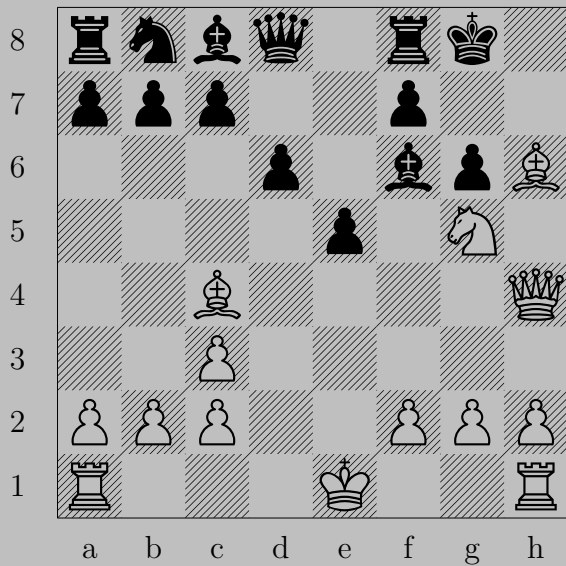


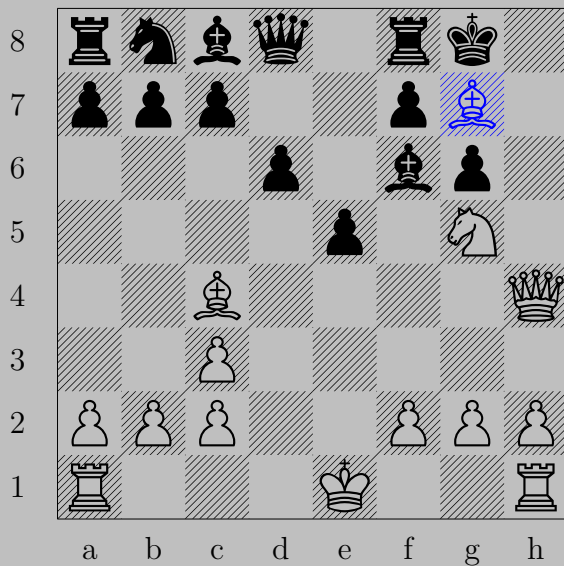
♖h8+, ♔xh8
♔h7





$\text{♟c7+}, \text{♞xc7}$
 ♞a7

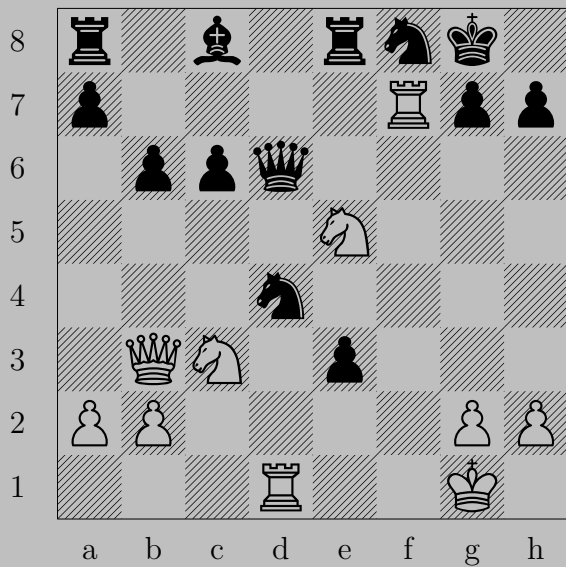




♞g7

If ♞xg5 , ♚h8 .

Otherwise, ♚h7 .

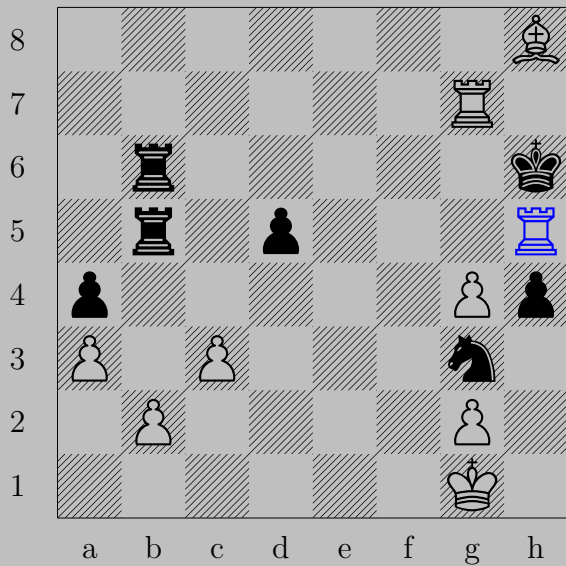




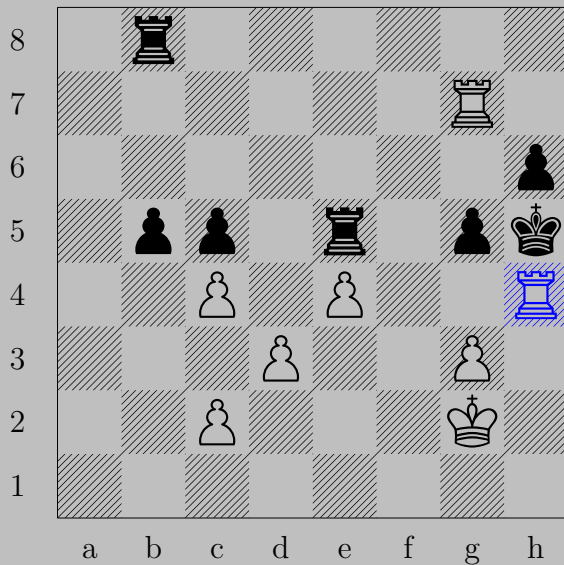
♖×f8+, ♔×f8
 ♕f7



♖g8+, ♔xg8
♗e6

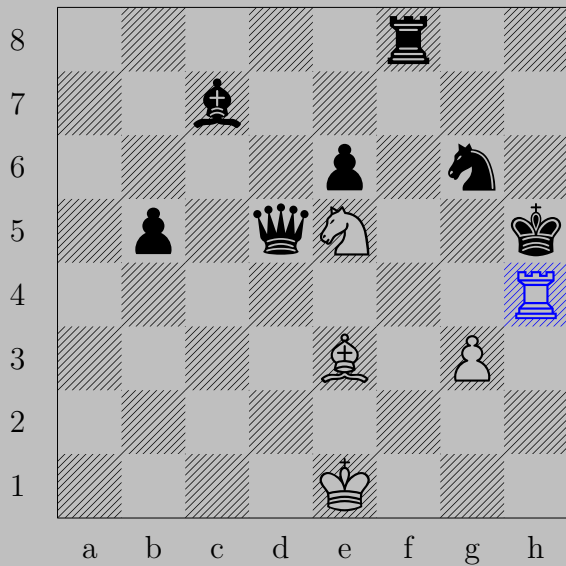


Rh5+, Nxh5
Pg5

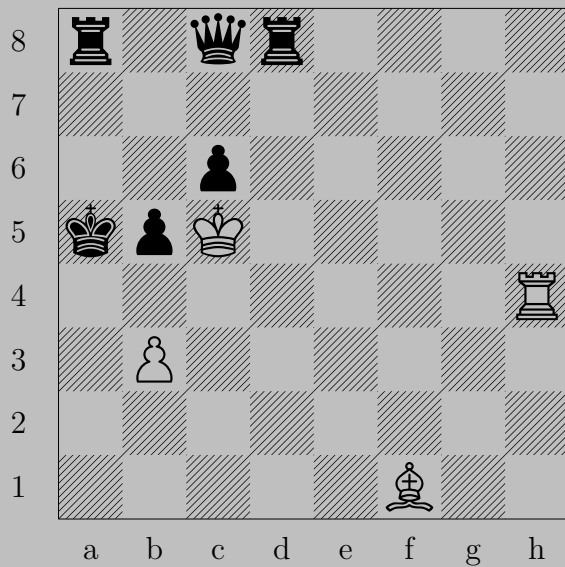


♖h4+ , ♙xh4
 ♙g4





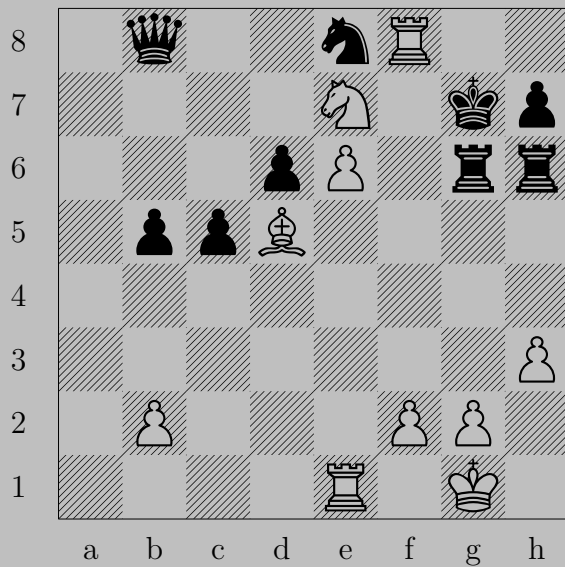
Rh4+, Nxh4
Bg4

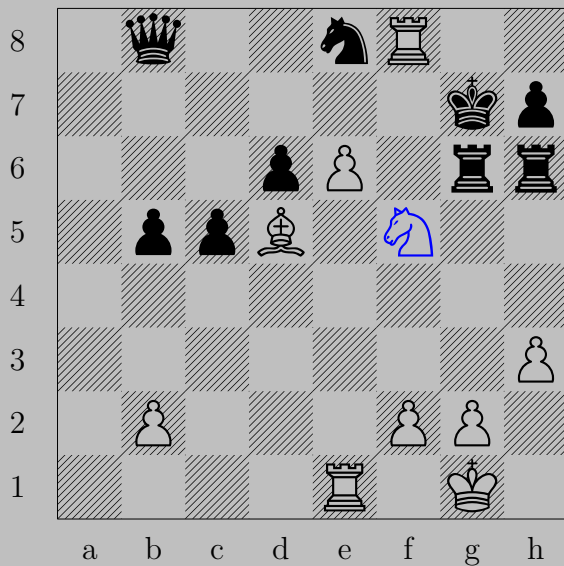


761



♖a4+, ♕×a4
♗b4





♞f5+, ♔xf8

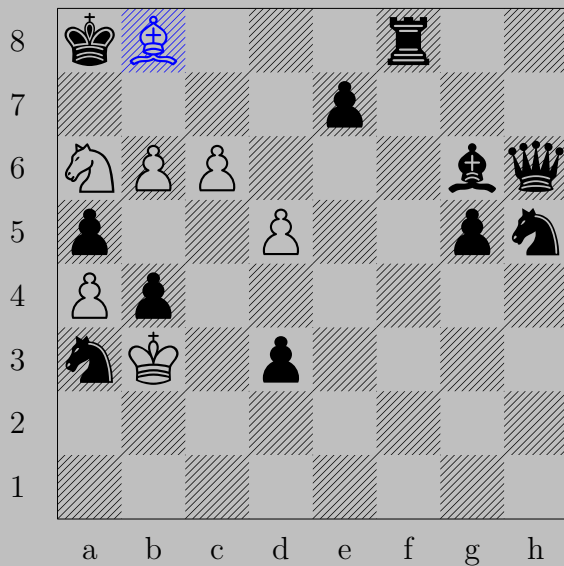
♙e7

763



$\text{Nc5+}, \text{Pxc5}$

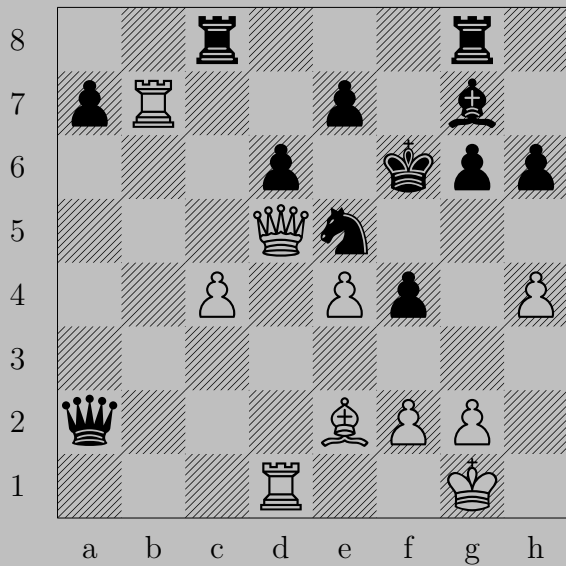
Ph6



♔b8

If ♖xb8, ♘c7.

Otherwise, ♙b7.





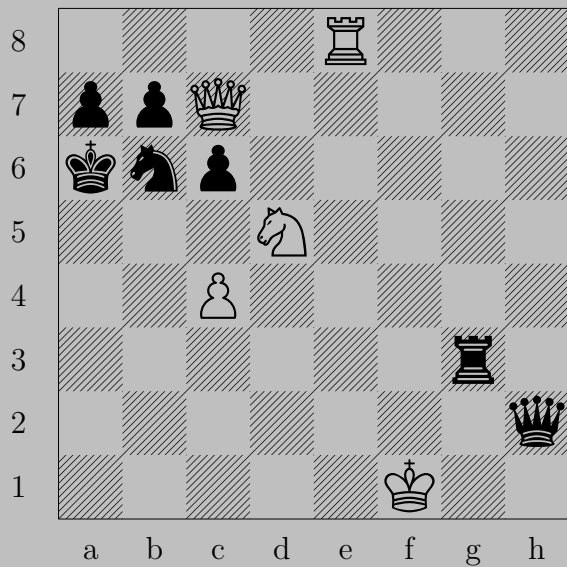
♙×d6+

If ♖×d6, ♖×d6. If ♔f7, ♙×e7.





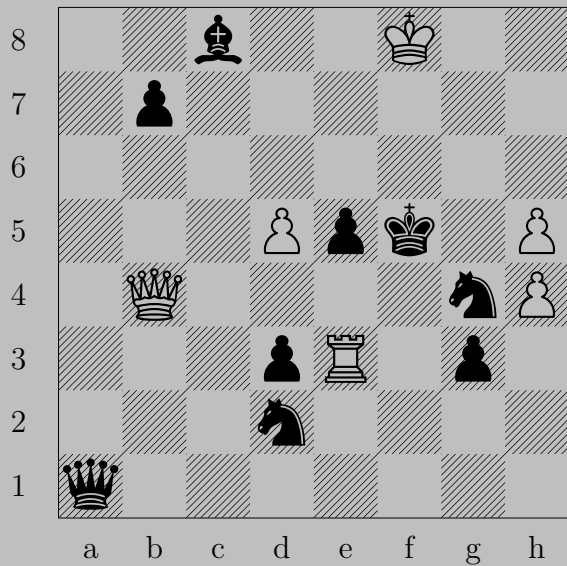
♙b4+, ♚×b4
♖c2

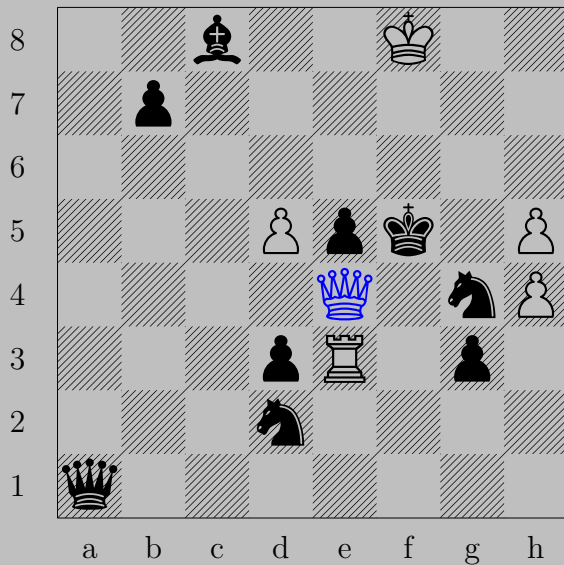


767



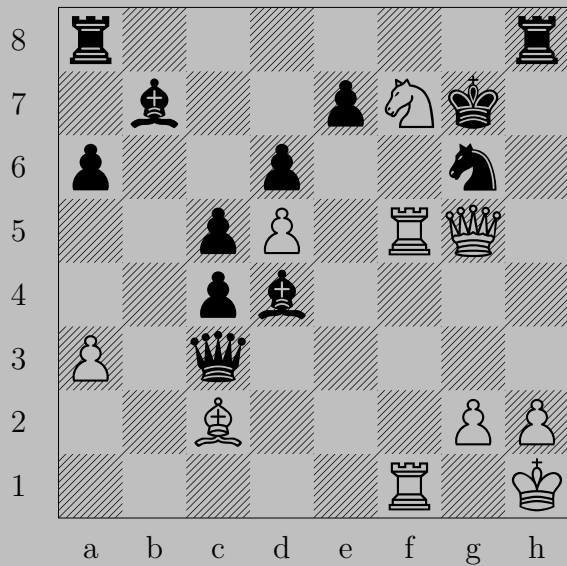
$\text{♙} \times b6+, \text{♜} \times b6$
 $\text{♖} a8$





♚e4+

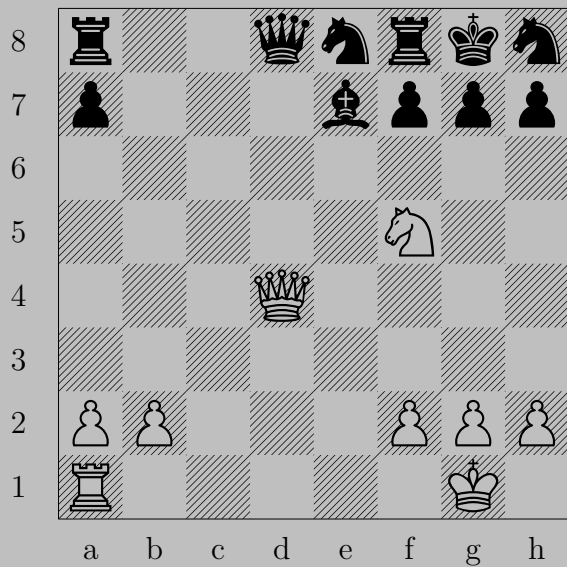
If ♞xe4, ♖f3. If ♚f6, ♚g6.

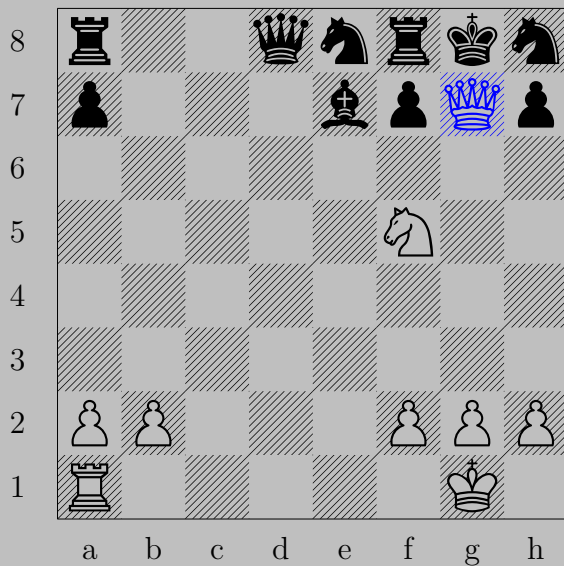







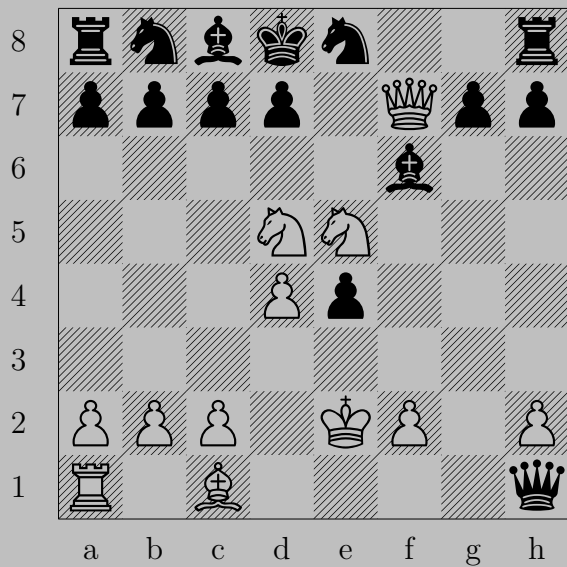
♙×g6+

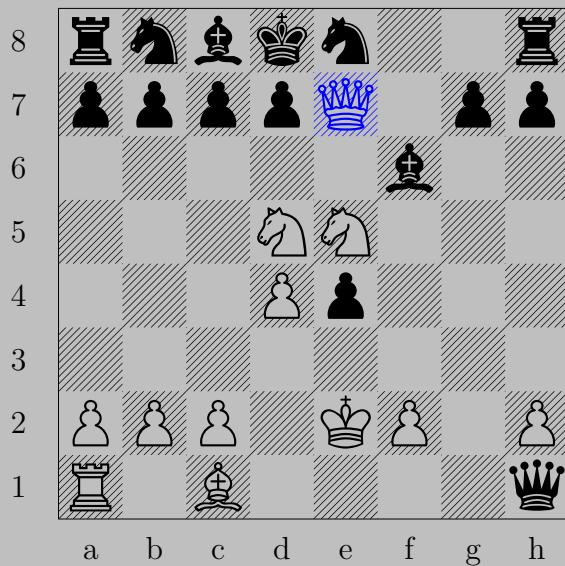
If ♙×g6, ♖g5. If ♙f8, ♘e5.





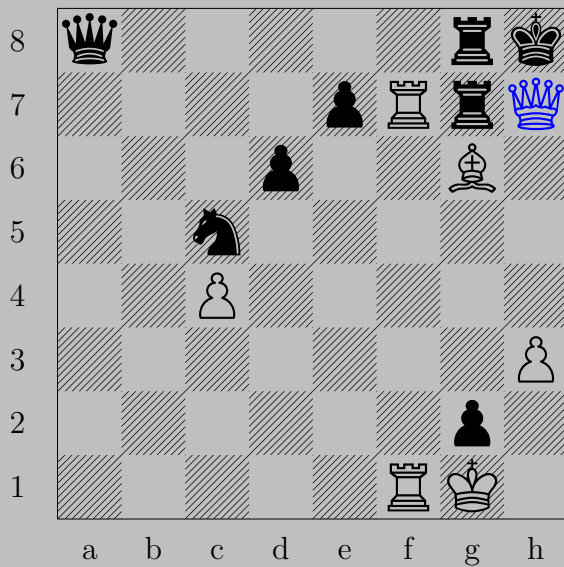
xg7+, xg7
h6



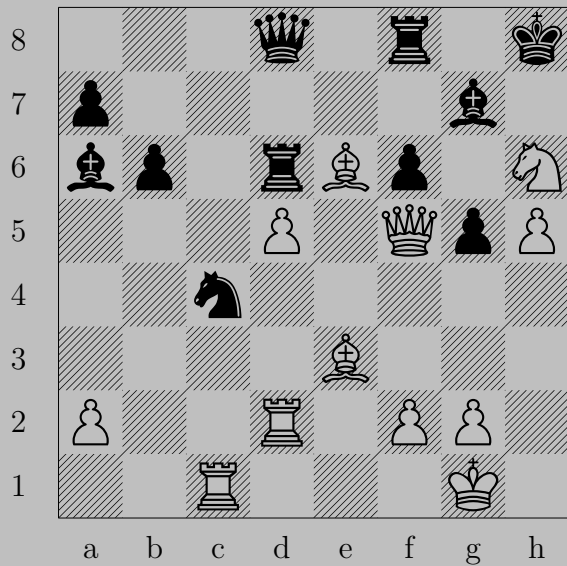


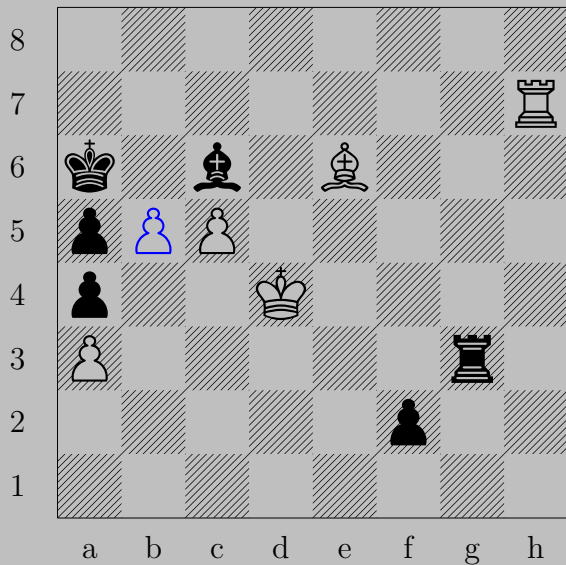
♔e7+, ♕xe7
 ♞f7





♔×h7+, ♖×h7
♖×h7





♠b5+

If ♙×b5, ♙c8. If ♚×b5, ♙c4.

775



♞c6+, ♟×c6

♜c5



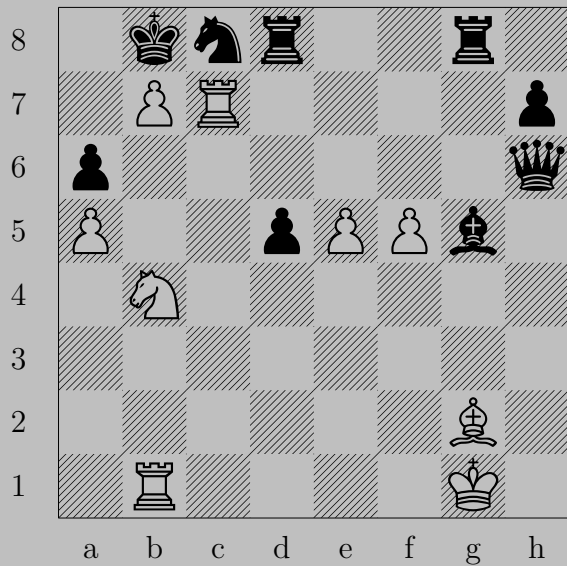
♖e6+

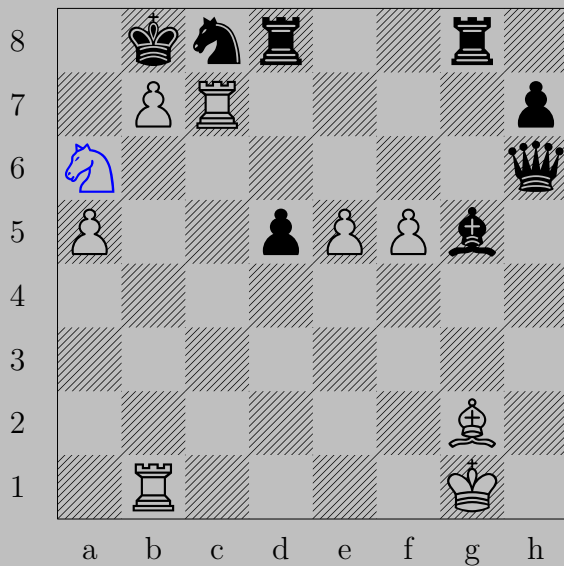
If ♔×e6, ♕h3. If ♔f4, ♖f5.



♙h6+, ♚xh6

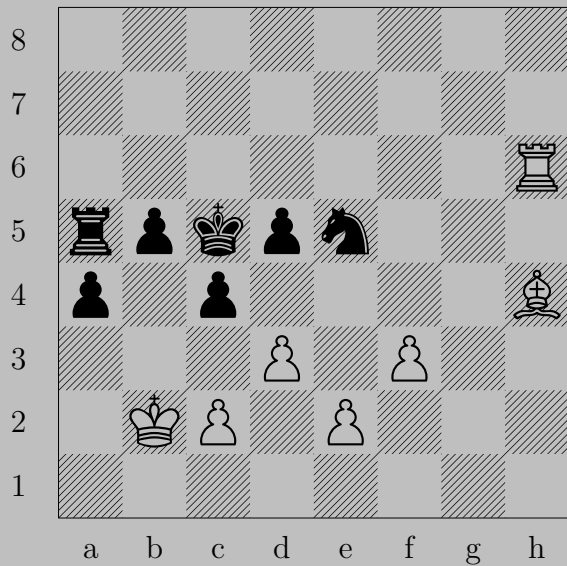
♞f8





♞a6+ , ♜xa6 or ♞a7

♟xc8 ♜

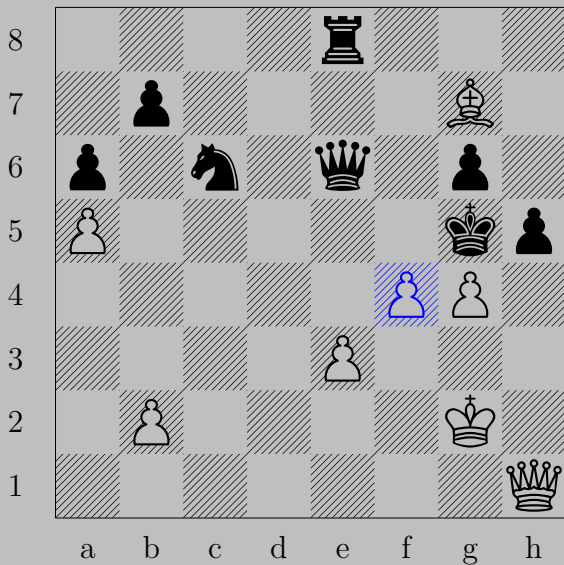




♔d4+

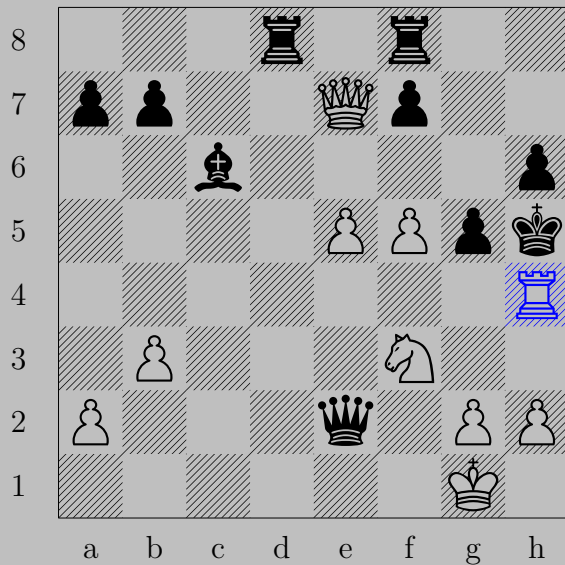
If ♙×d4, ♕f2. If ♙b4, ♕e7.

780



♙f4+, ♔xg4

♚h3

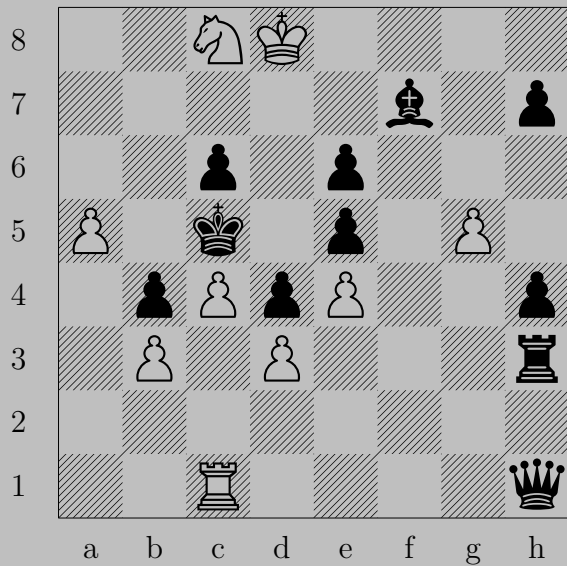


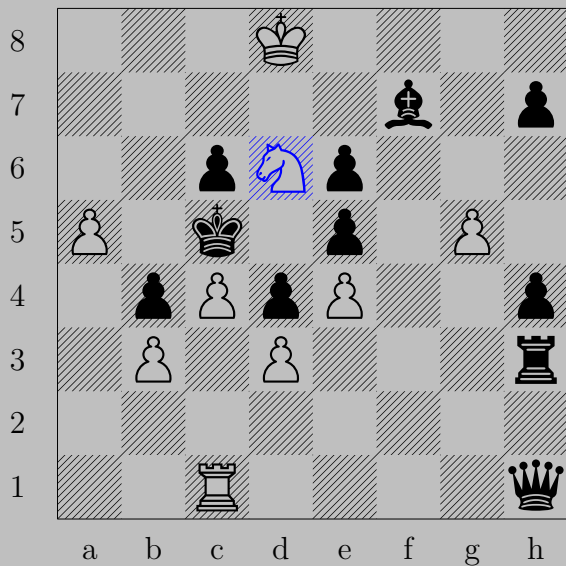
♖×h4+, ♘×h4
 ♙×h4



Rg6

If Pxg6 , Pxg6 . If Pf6 , Rg7 .

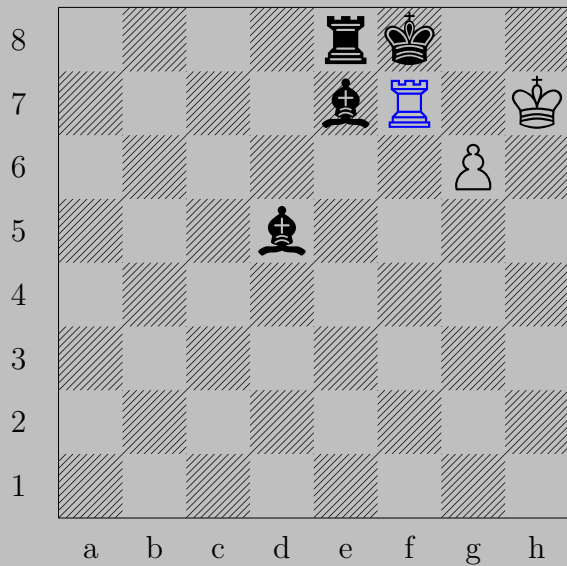




♞d6

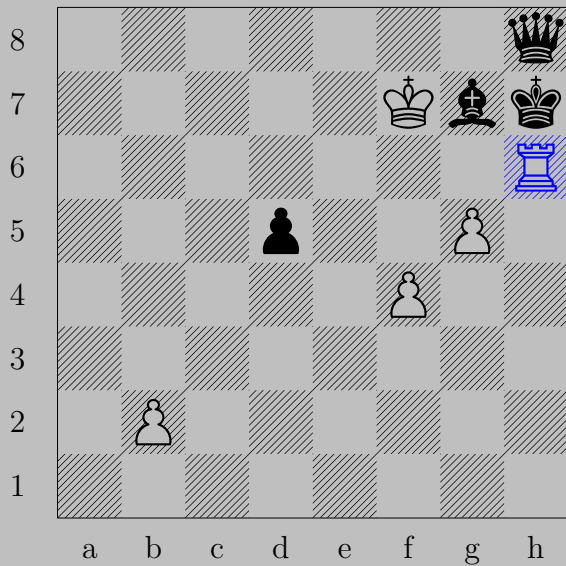
If $\text{♞}\times\text{d6}$, ♙c5 .

Otherwise, ♞b7 .



♖f7+, ♗xf7
♙g7

785



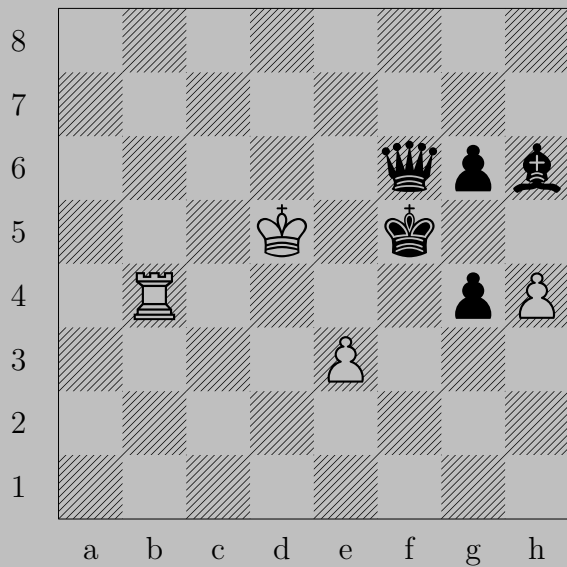
♖h6+, ♙xh6

♙g6





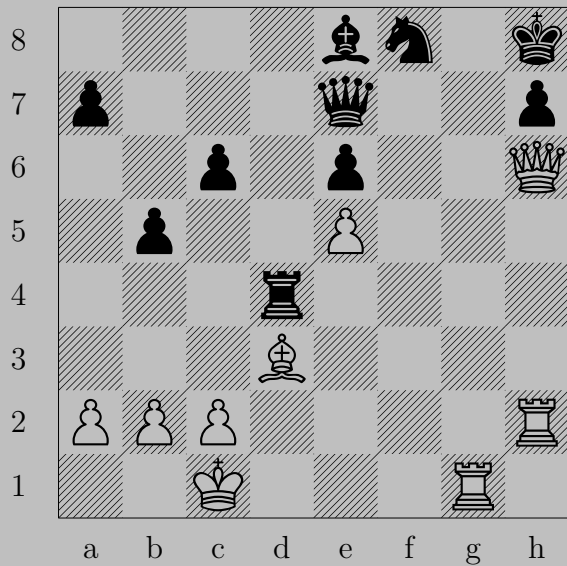
♖a4+, ♘x4
♘b4



787

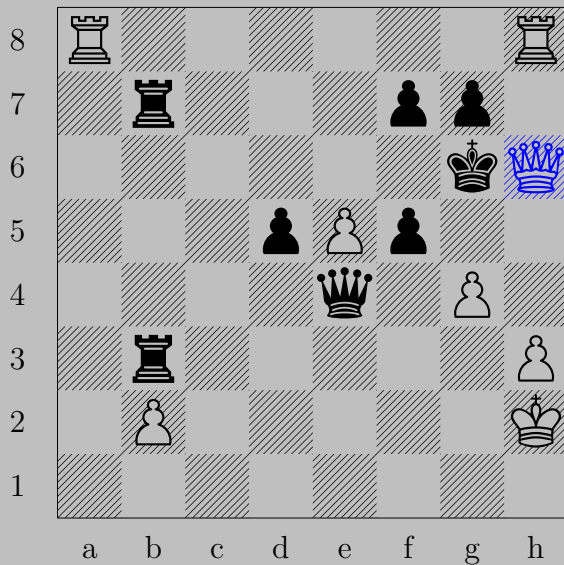


$\text{Rf4+}, \text{Qxf4}$
 Pe4



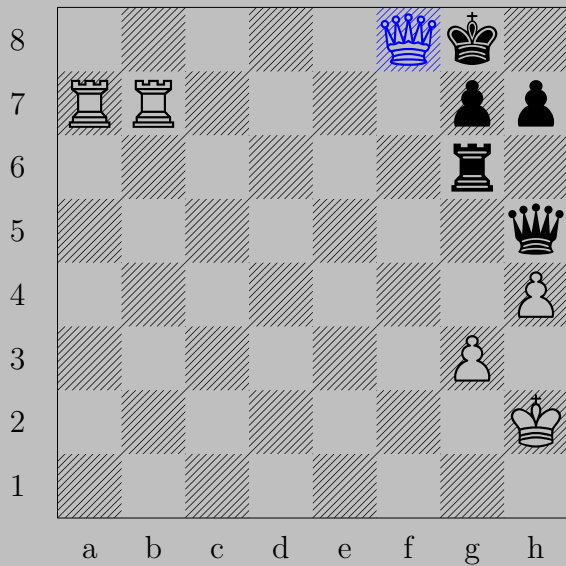





♔×f8+, ♔×f8
♖×h7

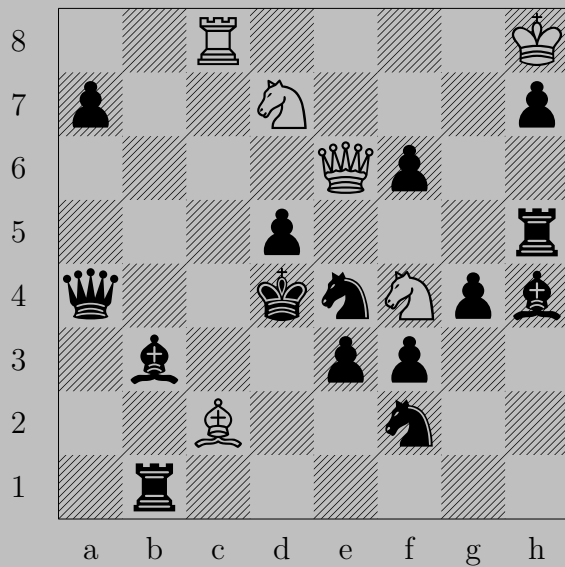


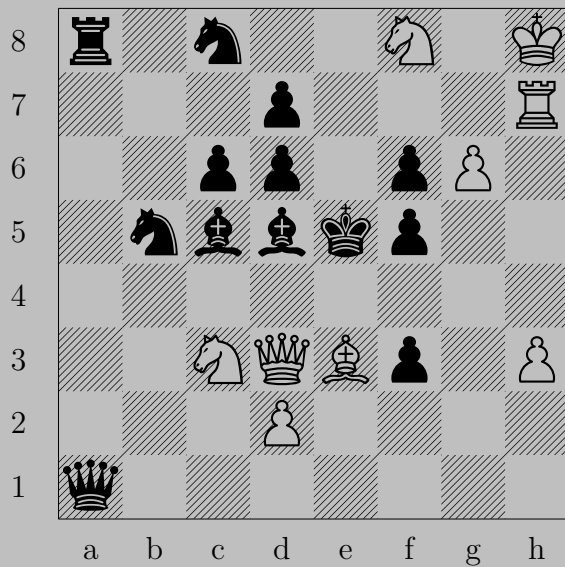
$\text{♙} \times h6+, \text{♚} \times h6$

$\text{♖} (a8)g8$



 × f8+.  × f8
 a8



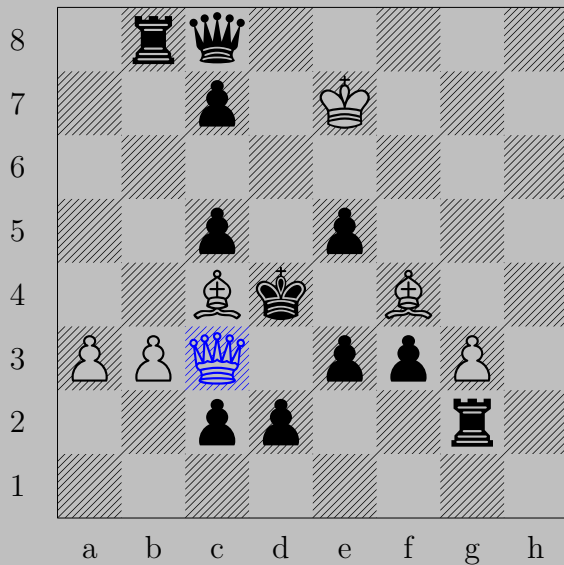




♙×g6

If ♖×g6, ♖h7.

Otherwise, ♙h7.

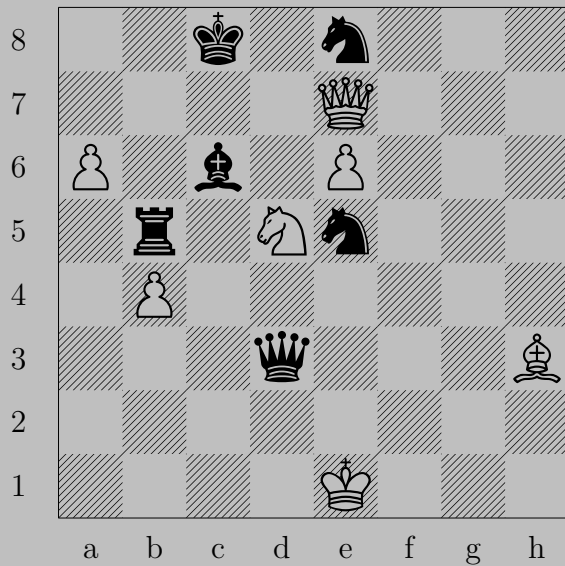


♙c3+

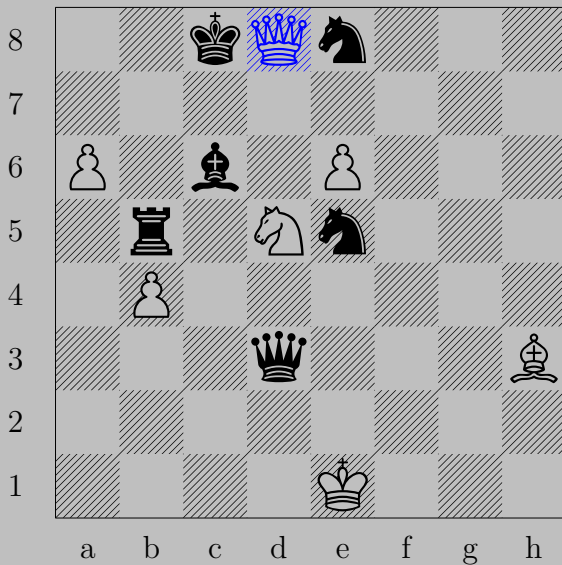
If ♖xc3, ♗xe5. If ♔e4, ♙xe5.



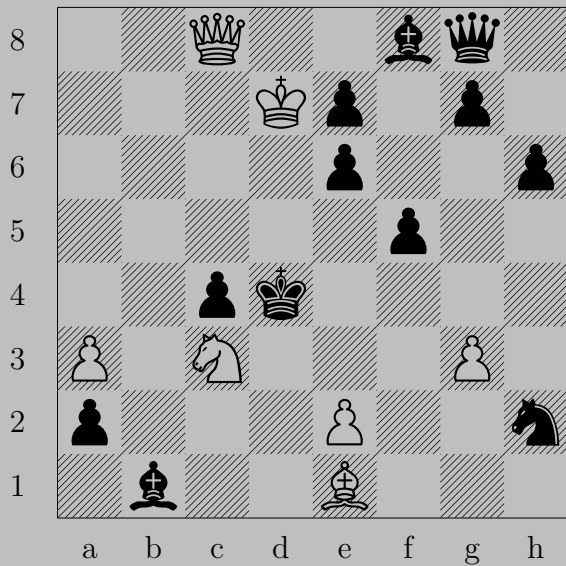
♖×e5+, ♔×e5
 ♗×c5



797



♚d8+, ♔xd8
♙e7



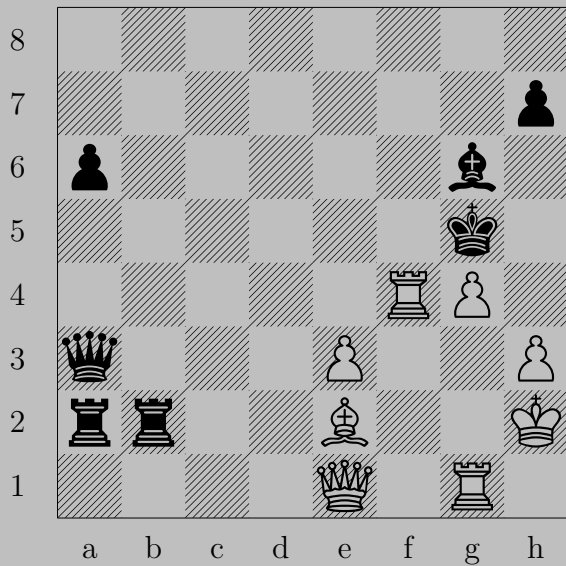


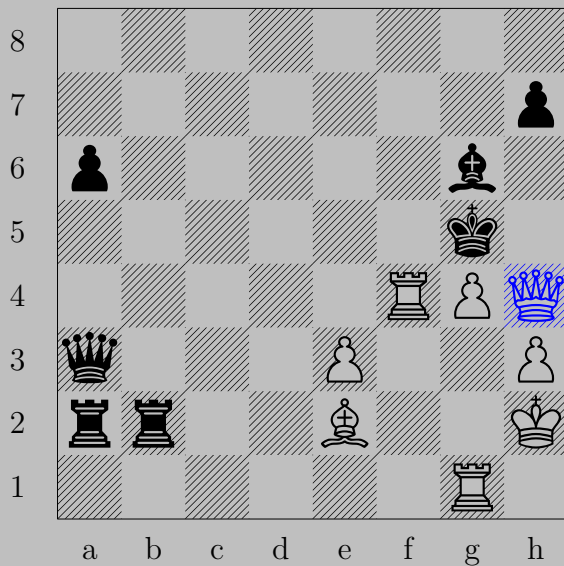
♙c5+, ♚xc5
♘f2



♙h7+, ♚×h7

♜f7





♚h4+, ♔xh4
♙g5