

Chess Puzzles

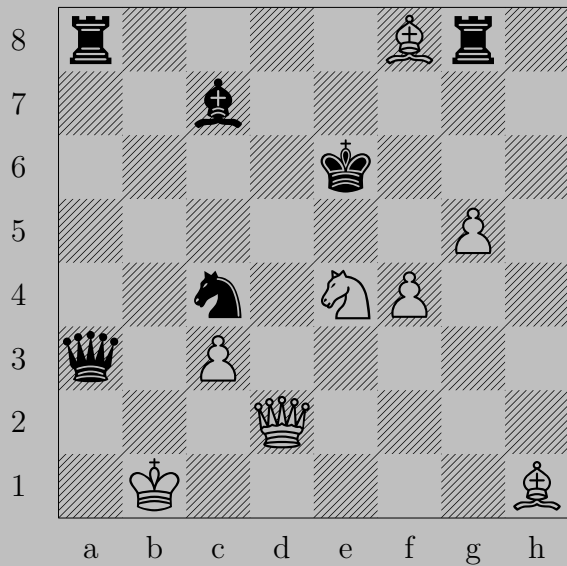
801-900

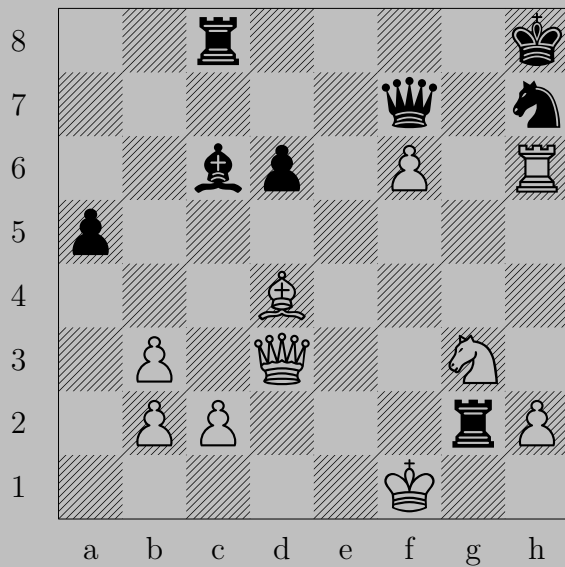
Mate in Two
White to Move

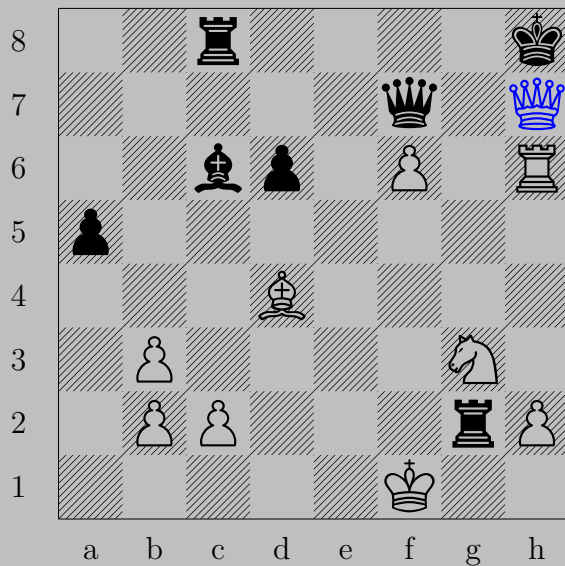
László Polgár

Links

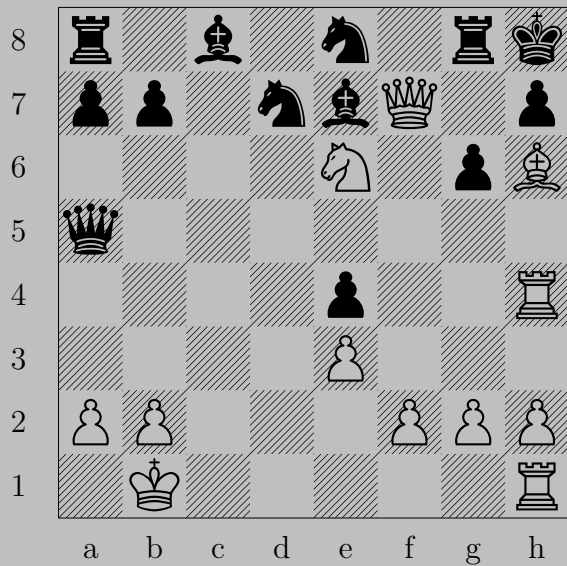
801 802 803 804 805 806 807 808 809 810
811 812 813 814 815 816 817 818 819 820
821 822 823 824 825 826 827 828 829 830
831 832 833 834 835 836 837 838 839 840
841 842 843 844 845 846 847 848 849 850
851 852 853 854 855 856 857 858 859 860
861 862 863 864 865 866 867 868 869 870
871 872 873 874 875 876 877 878 879 880
881 882 883 884 885 886 887 888 889 890
891 892 893 894 895 896 897 898 899 900

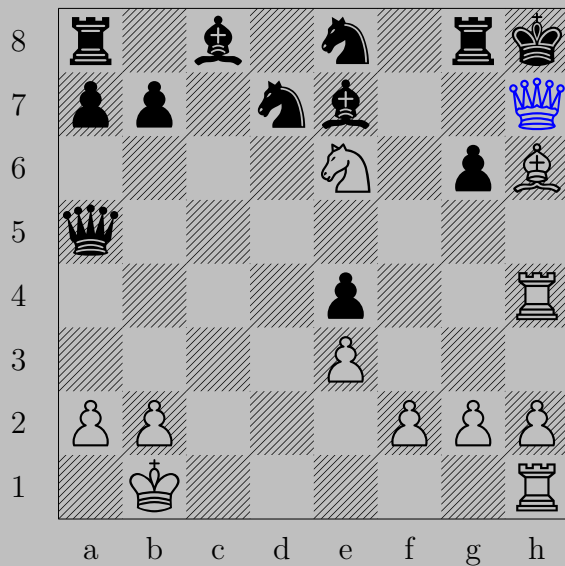




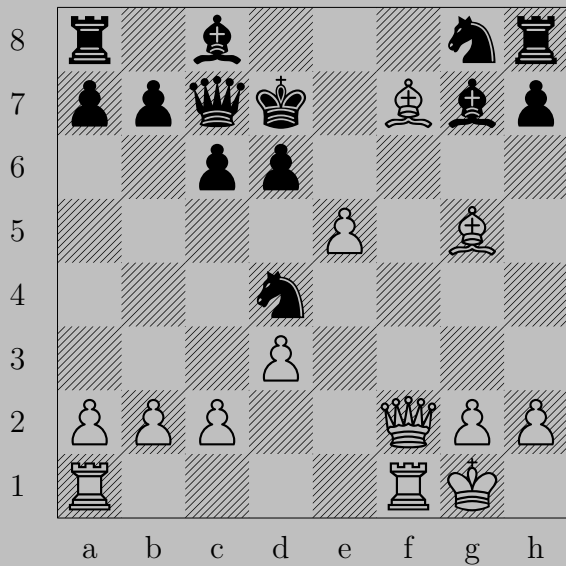


♔×h7+, ♔×h7
♕f7





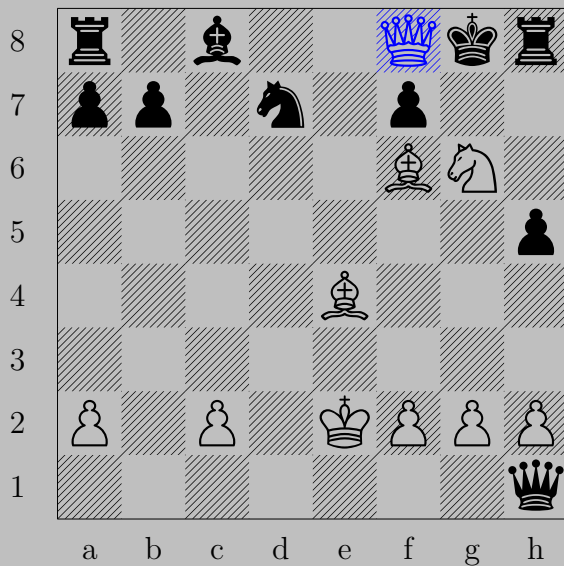
♔×h7+, ♔×h7
♘g7





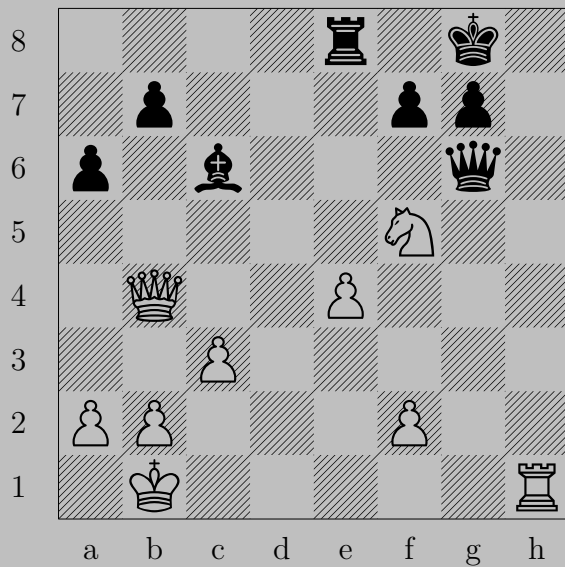
♙f5+

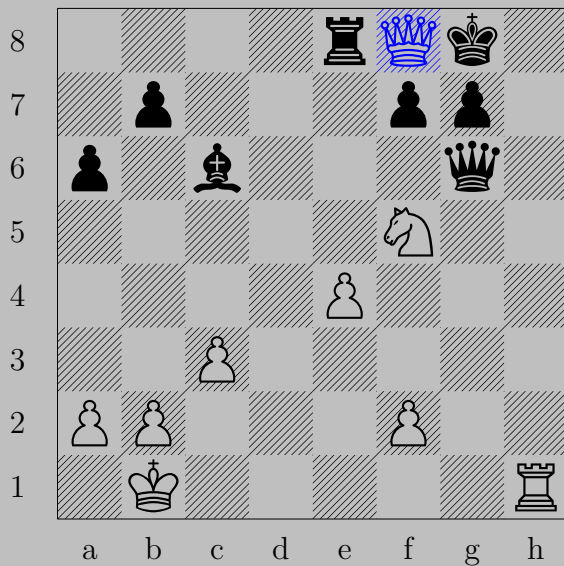
If ♘xf5 ♖e6. If ♘e6, ♙xe6.



♙f8+

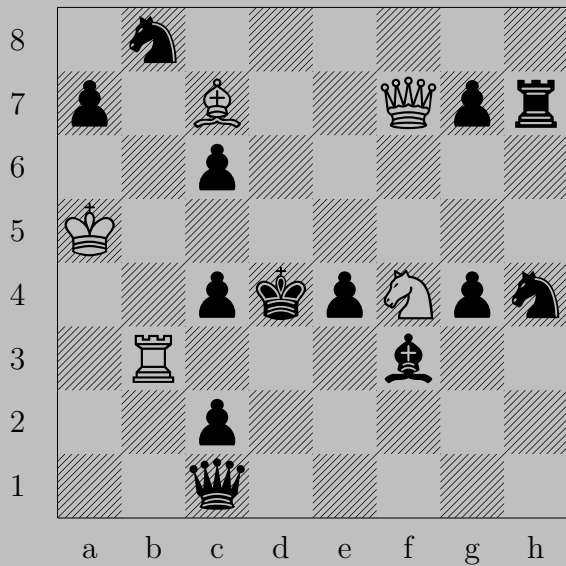
If ♖x8, ♗e7. If ♔h7, ♘x8.

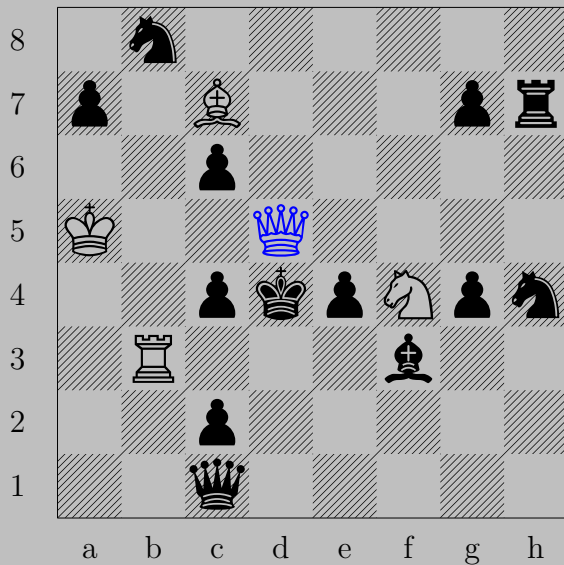




♙f8+

If ♖xf8, ♘e7. If ♚xf8, ♜h8.



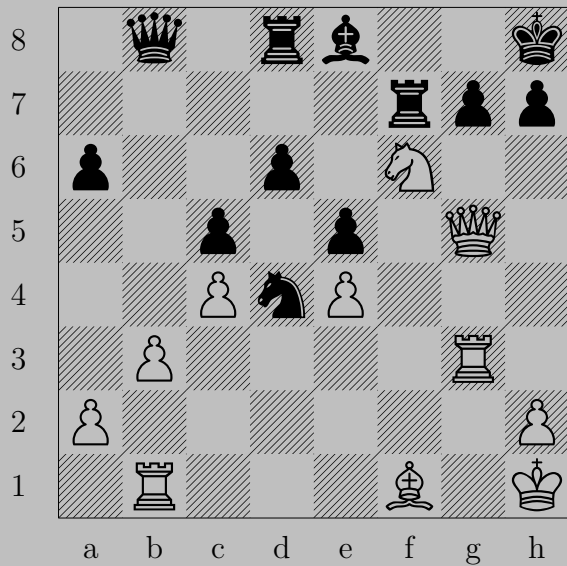


♔d5+, ♕×d5
♞e6



♙d6+

If ♖xd6, ♕g7. If ♔f6, ♙xf4.

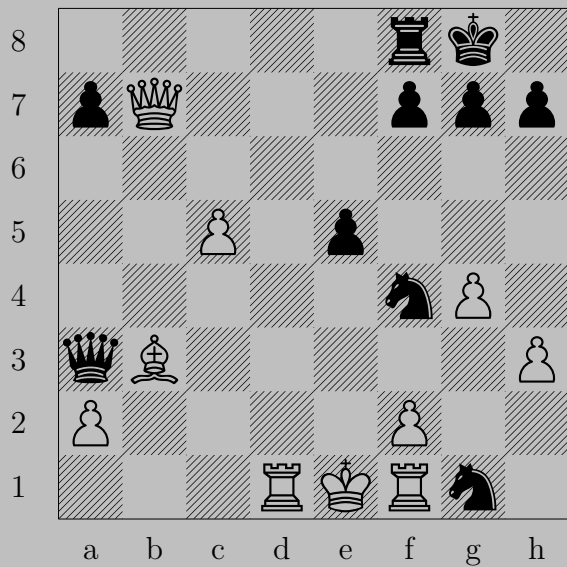




♙g6

If ♖×g6, ♜h3. If ♜×f6, ♙×g7.

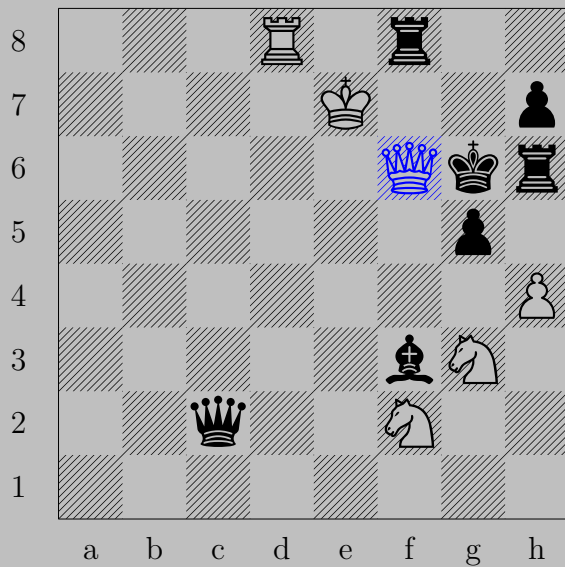
Otherwise, ♙×h7.



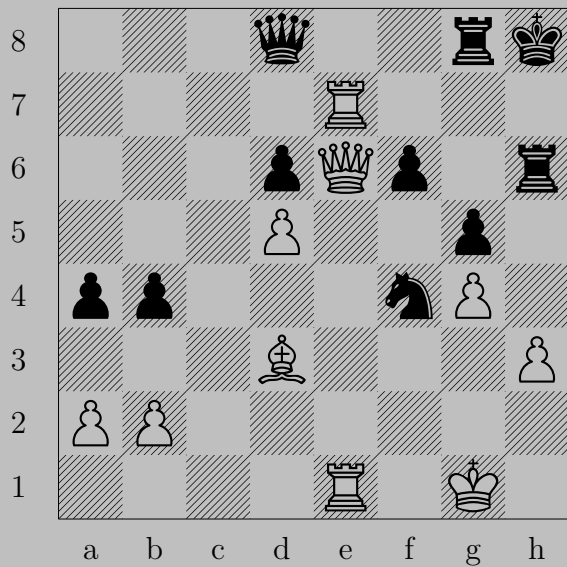


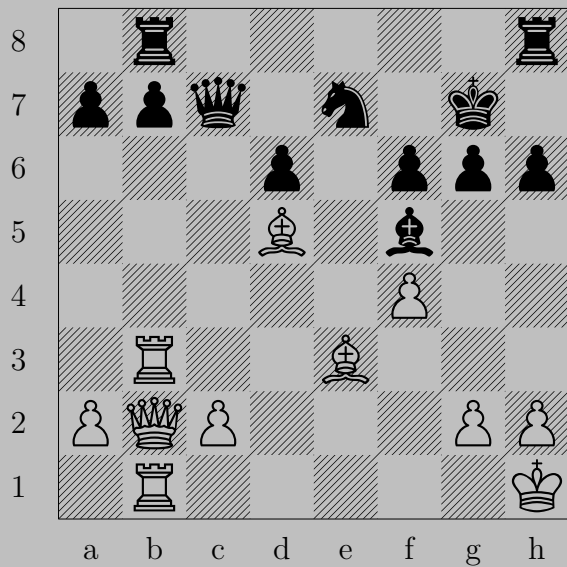
♙xf7+

If ♖xf7, ♖c8. If ♔h8, ♙xf8.



♙×f6+, ♖×f6
♖g8

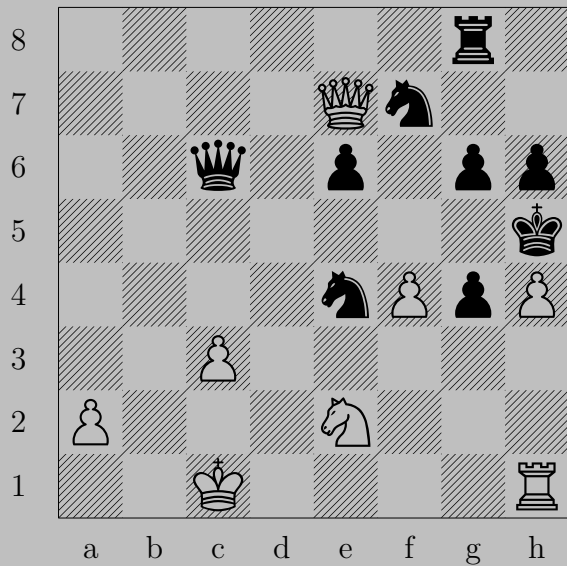






♙×f6

If ♔×f6, ♕d4. If ♔h7, ♙f7.





♔g5+, ♖xg5 or ♘xg5
 ♖xg5



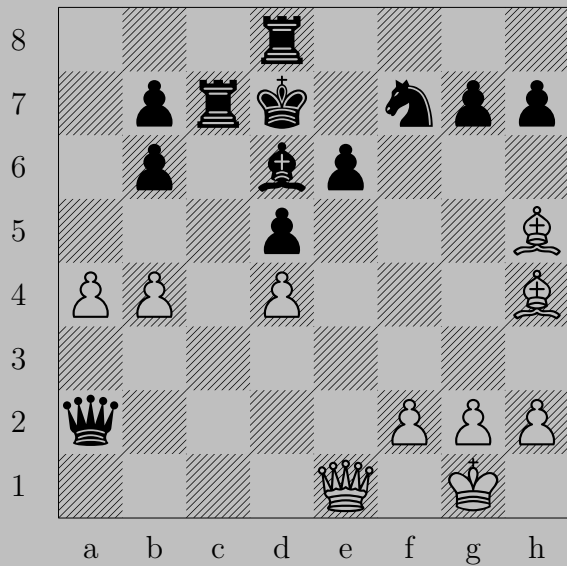
♙xg7+, ♚xg7
♘c3



817



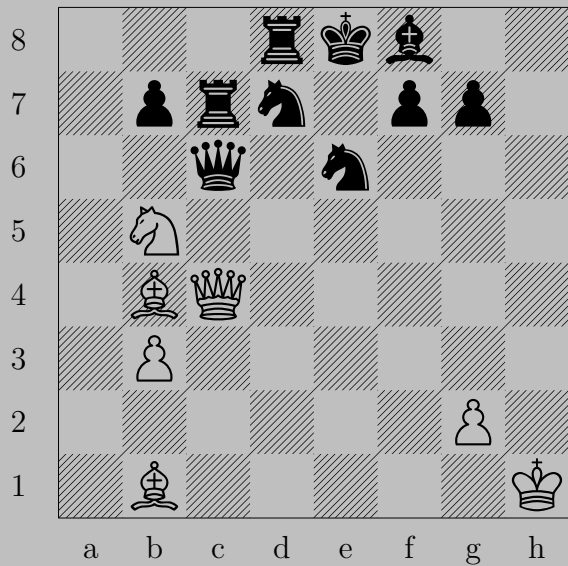
$\text{♔e7+}, \text{♕xe7}$
 ♞c5





♙×e6+

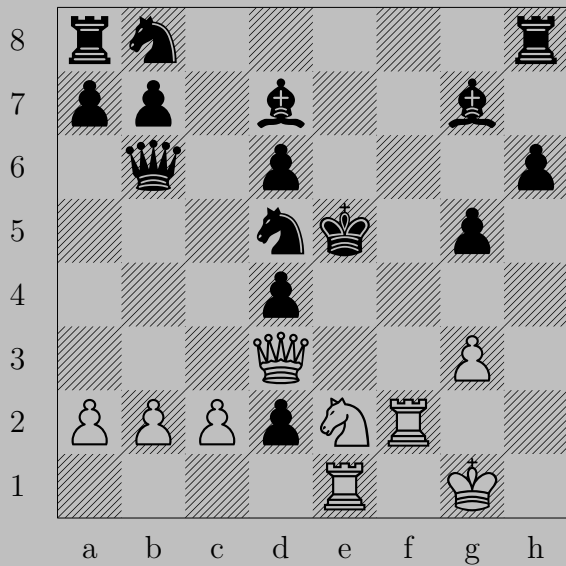
If ♖×e6, ♗g4. If ♖c6, ♔b5.

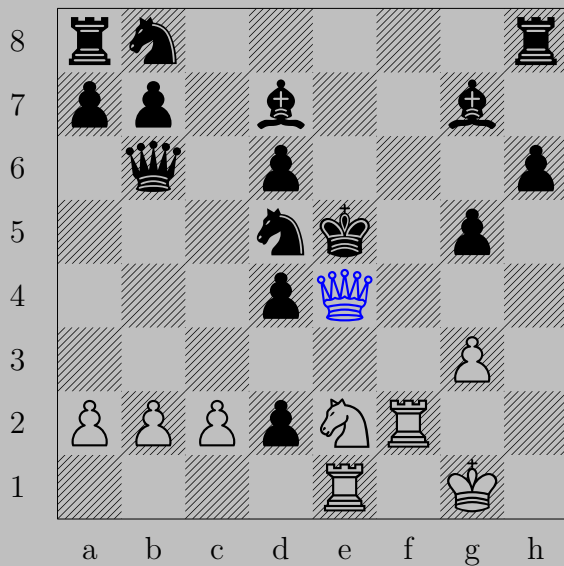




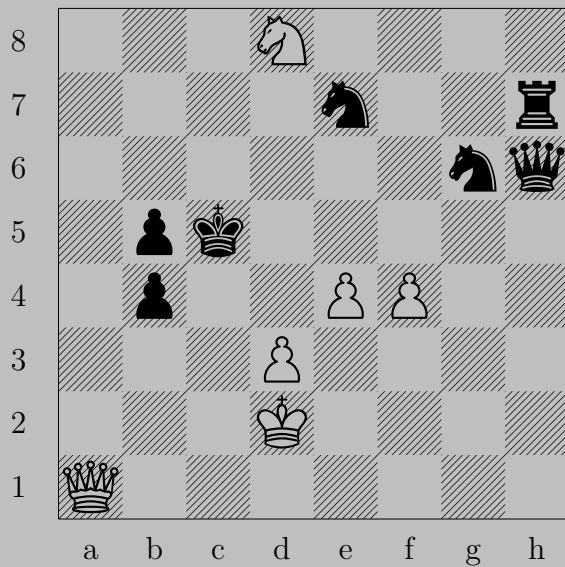
♙×e6+

If ♙×e6, ♞×c7. If ♜×e6, ♜g6.





♔e4+, ♕xe4
♞c3



821

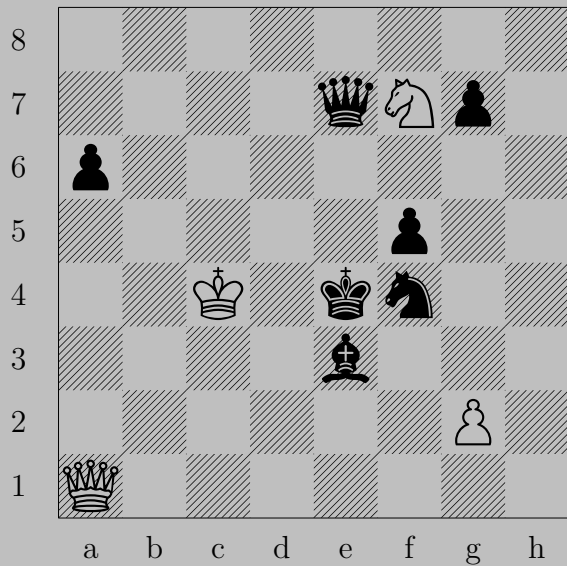


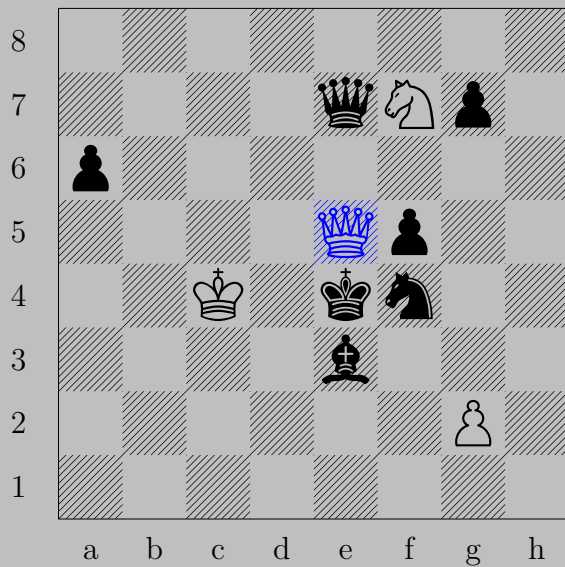
♙d4+, ♚xd4
♞f5



♚c6+

If ♙xc6, ♙d7. If ♚c7, ♚xc7.








♔e5+, ♔xe5
♞g5



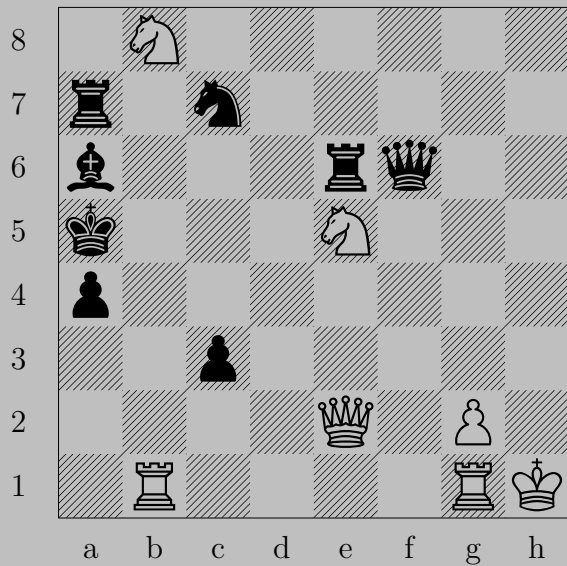


b5+, x b5
x b5



♚h6+

If ♗xh6, ♗e7. If ♔xh6, ♗e3.








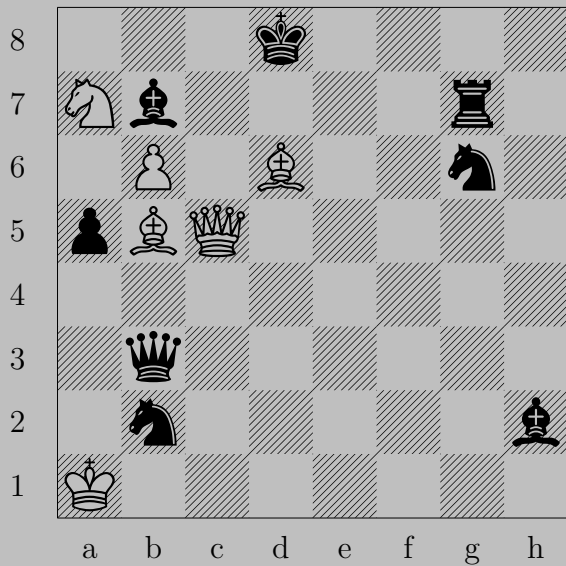
♙×a6+, ♖×a6 or ♞×a6

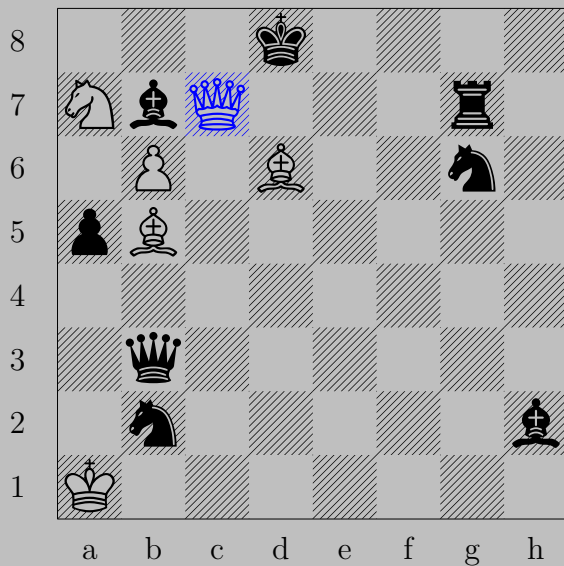
♞c4





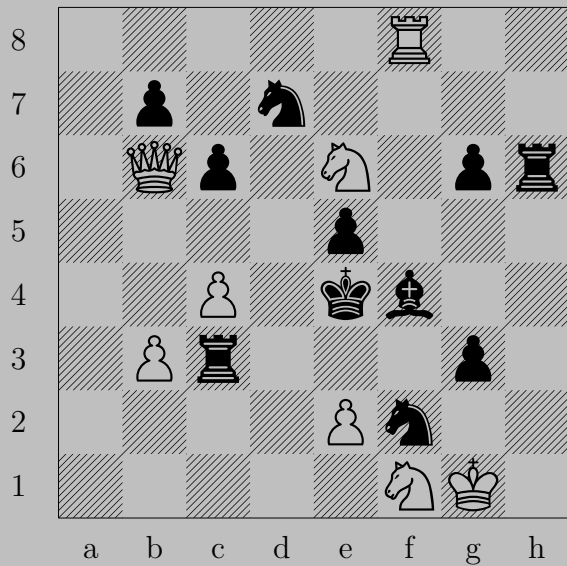
d6+, x d6
f7

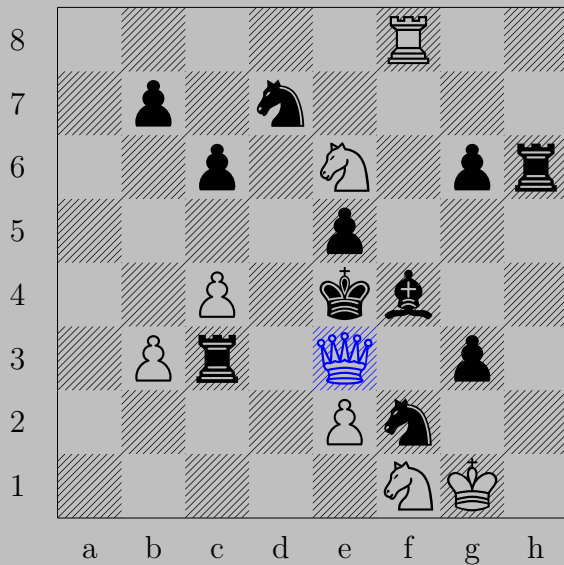




♚c7+, ♖xc7

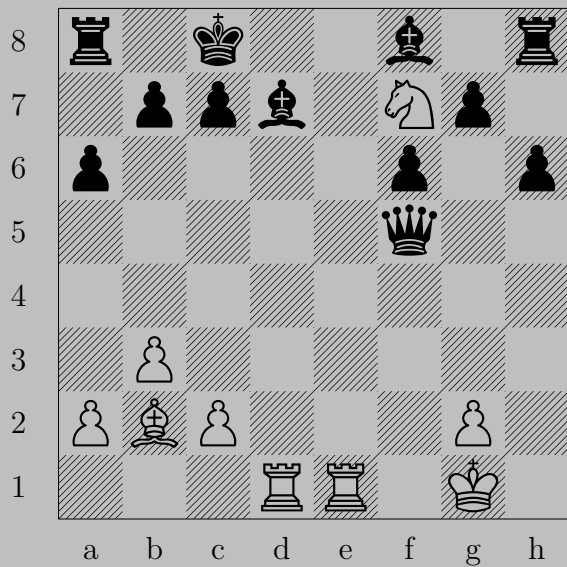
♙xc7





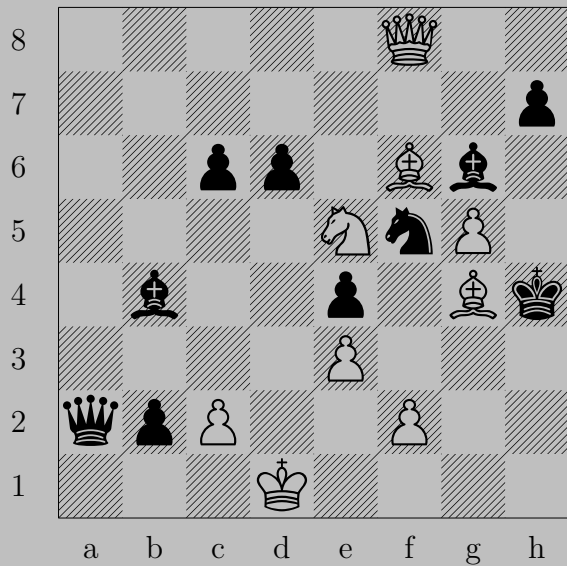
♔e3+

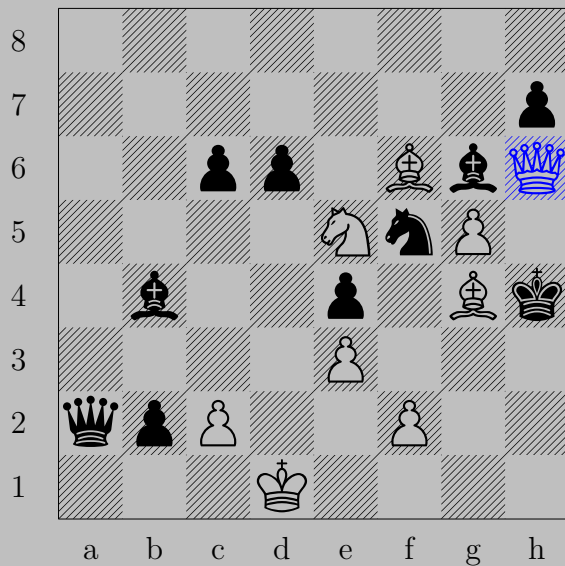
If ♙xe3, ♘xg3. If ♖xe3, ♘d2.



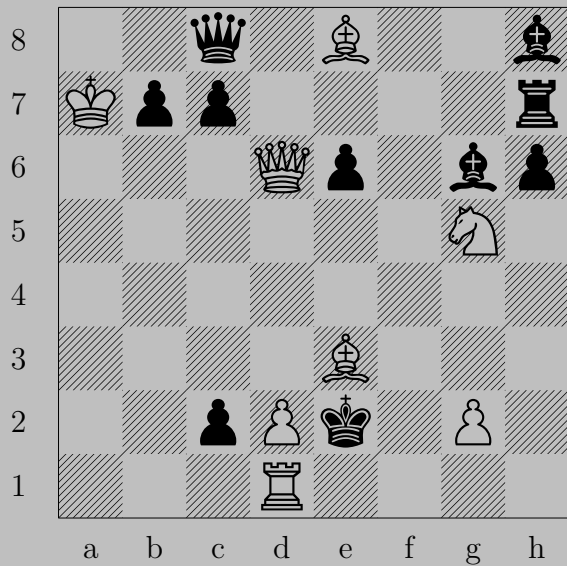


♖e8+, ♔xe8
♖d8





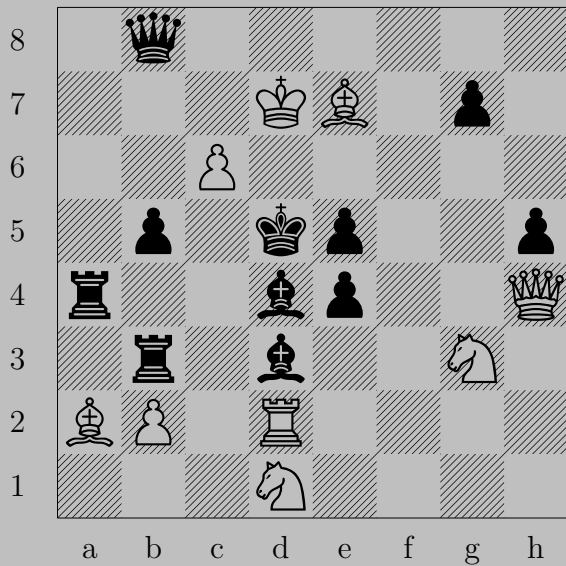
♚h6+, ♞xh6
♙xh6

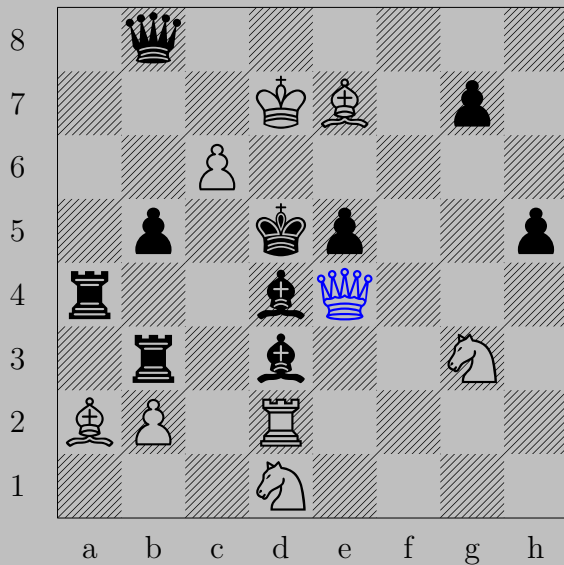




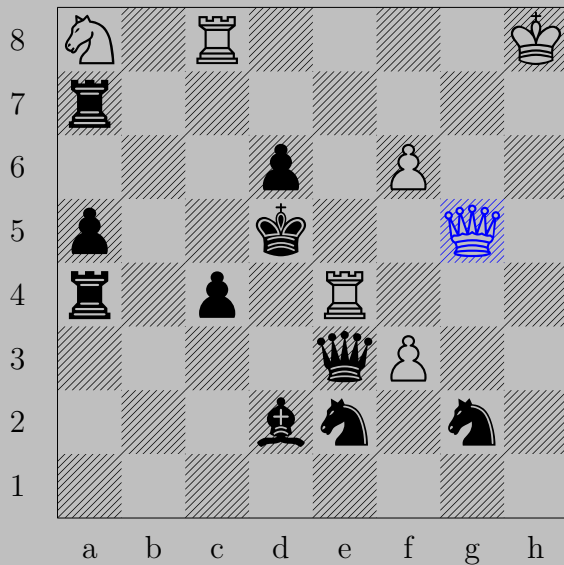
♔d3+

If ♙xd3, ♙h5. If ♖xd3, ♙b5. If ♖xd1, ♔f1.



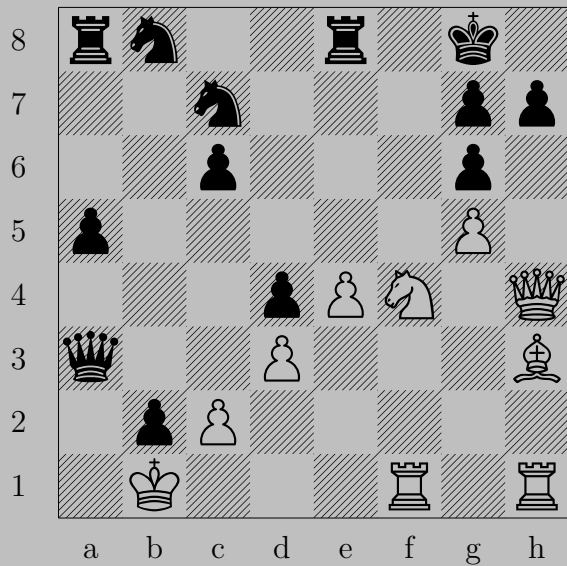


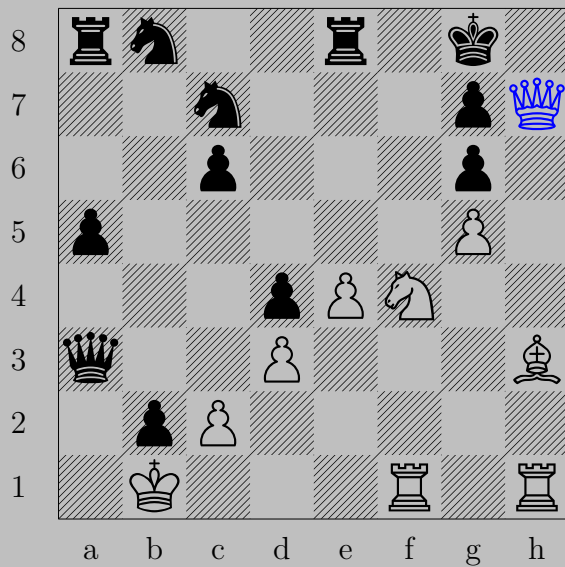
$\text{♙} \times e4+$, $\text{♜} \times e4$ or $\text{♚} c4$
 $\text{♞} e3$



♔xg5+, ♔xg5

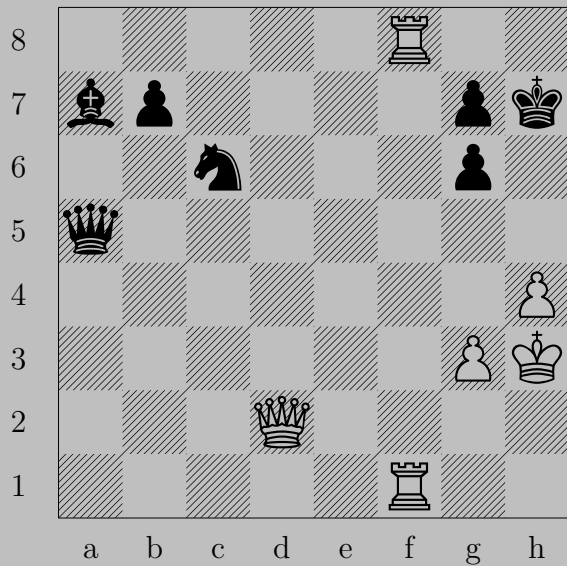
♞b6





♔×h7+, ♔×h7

♘e6



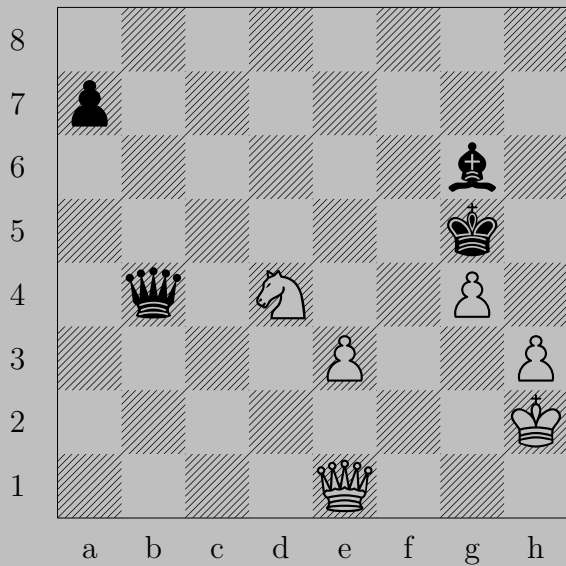


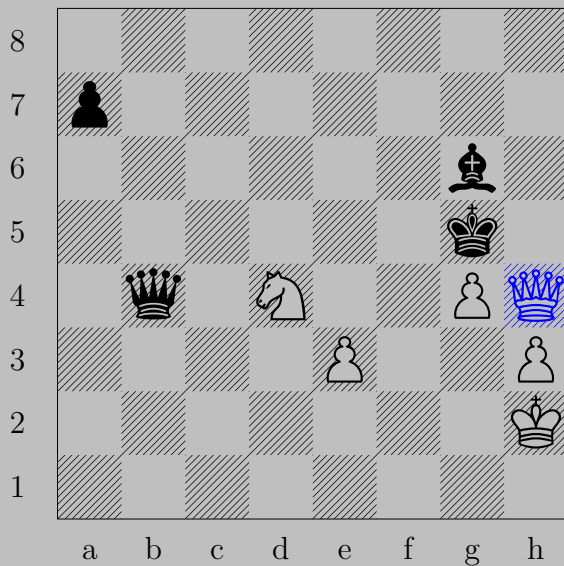
♙h6+

If ♗×h6, ♖(f1)f7. If ♔×h6, ♖h8.

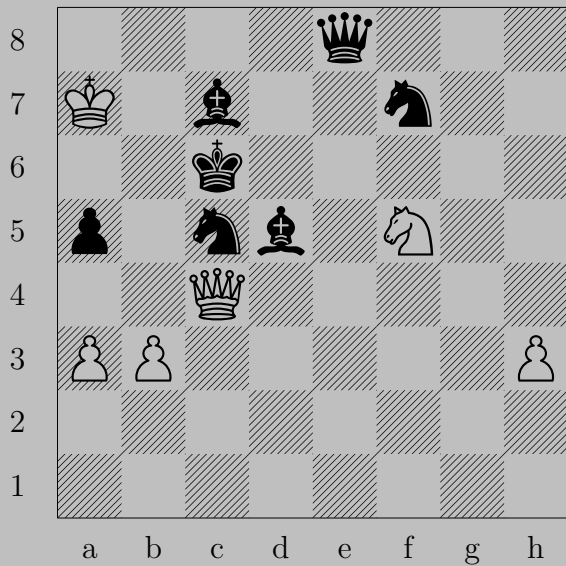


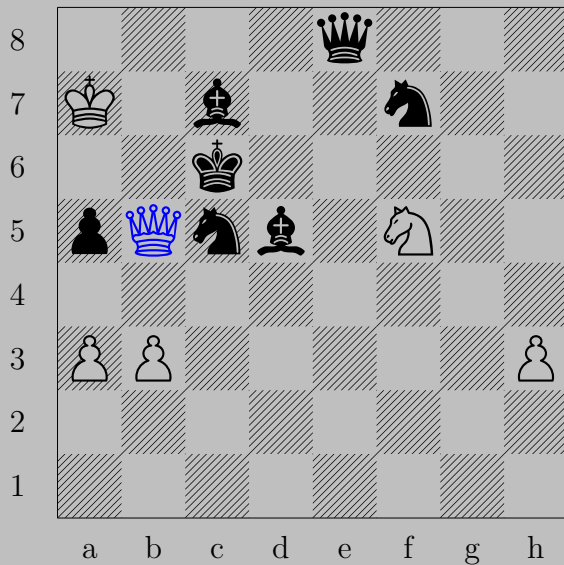
♙h7+, ♘xh7
♚xh7



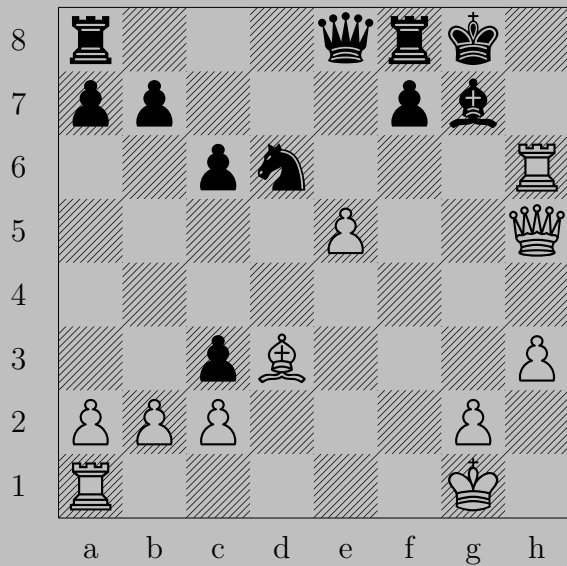


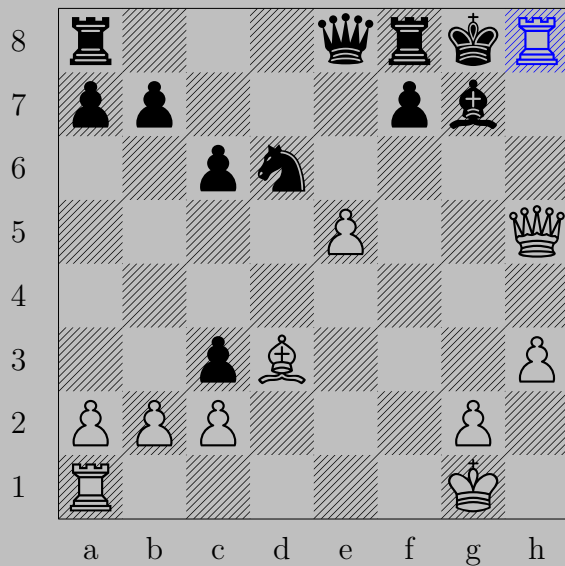
♔h4+, ♕xh4
♞f3





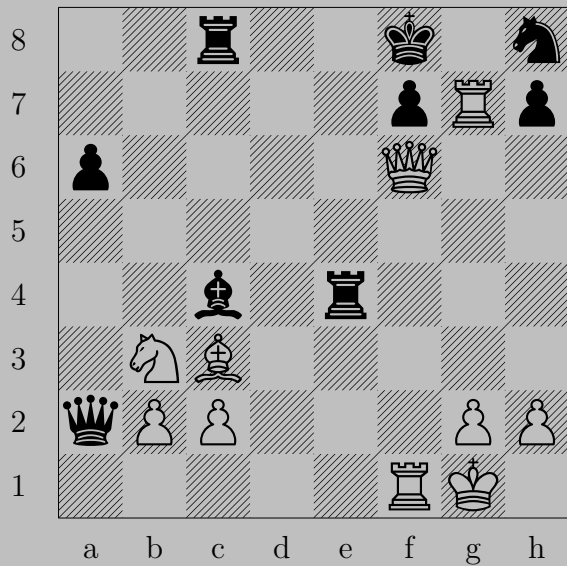
♔b5+, ♕×b5
♞d4





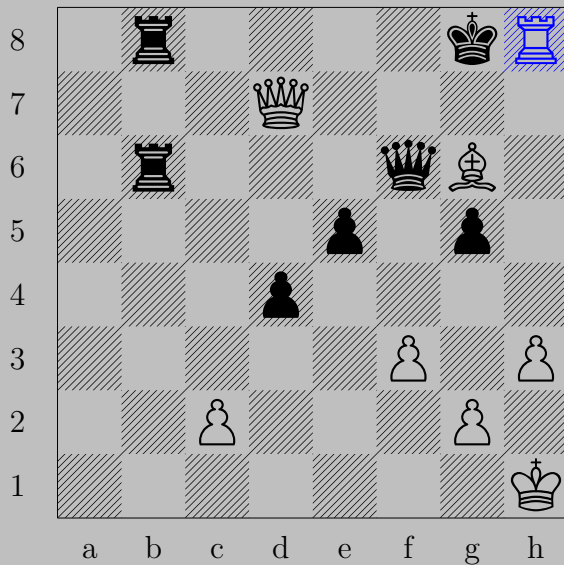
$\text{R}h8+, \text{K}xh8$

$\text{K}h7$



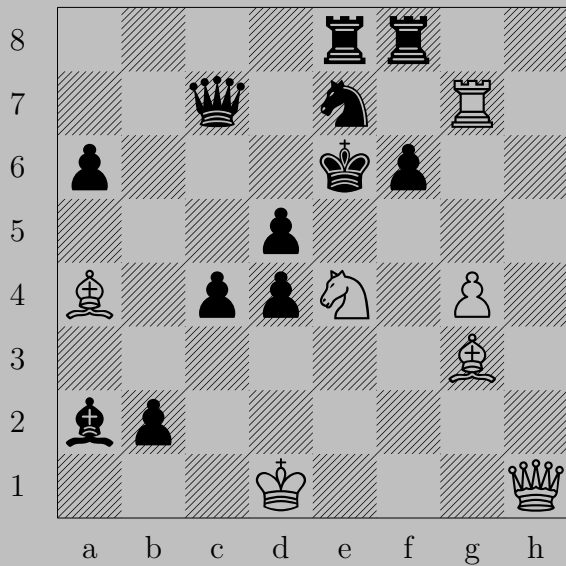


♖g8+, ♔xg8
 ♕g7 or ♕xh8



$\text{R}h8+$

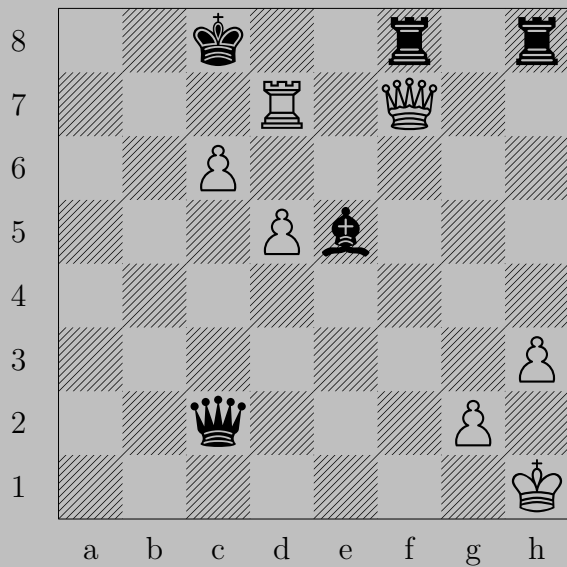
If $\text{Q} \times h8$, $\text{Q}h7$. If $\text{Q} \times h8$, $\text{Q}f7$.





$\text{Nc5+}, \text{Qxc5}$

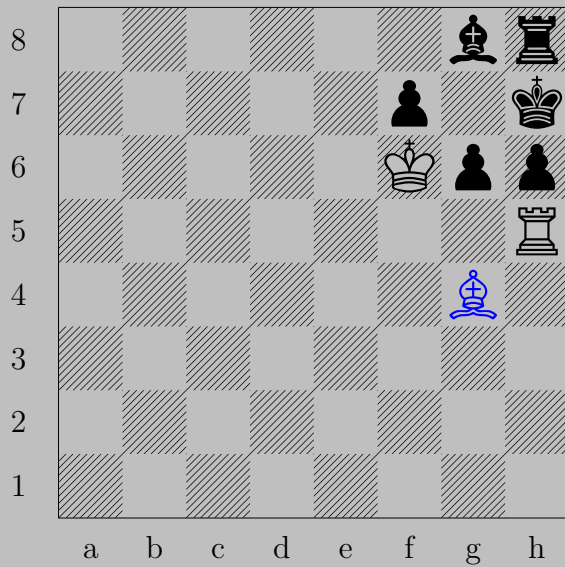
Qe1





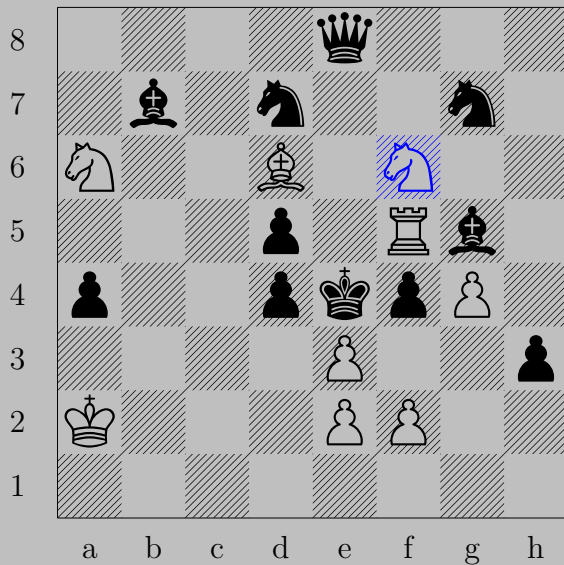
Rd8+

If Rxd8 , Qb7 . If Kxd8 , Qd7 .



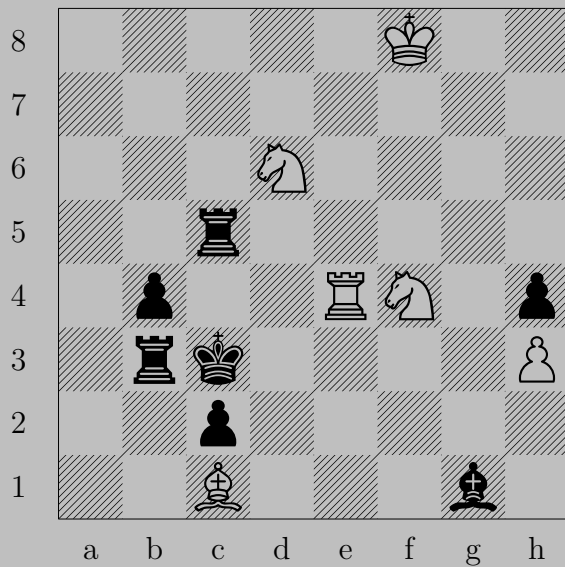
♖×g4, ♗×h4

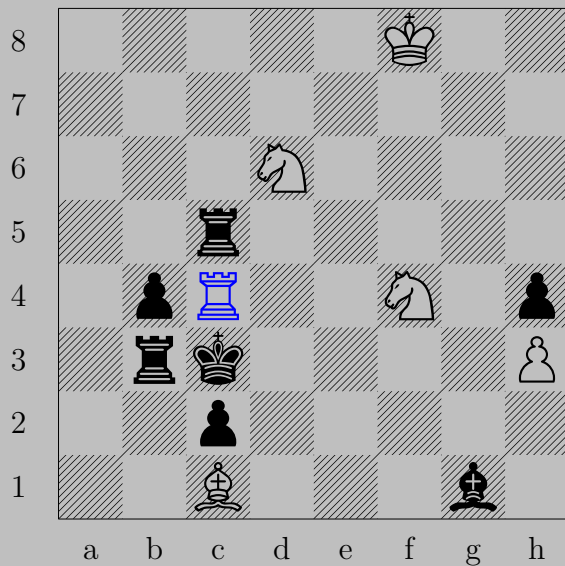
♖f5



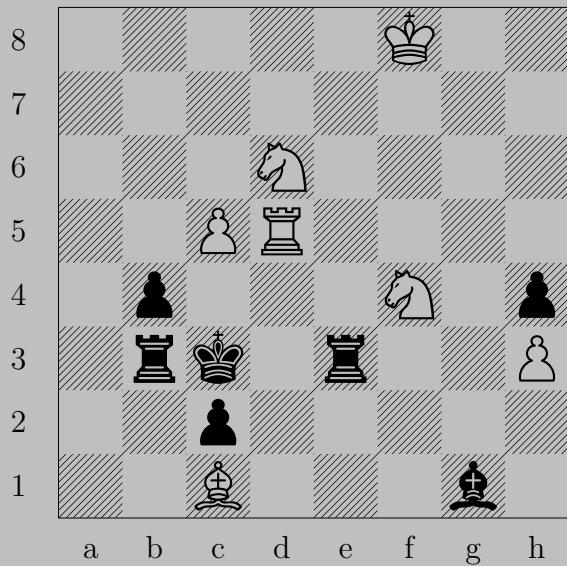
♞×f6+

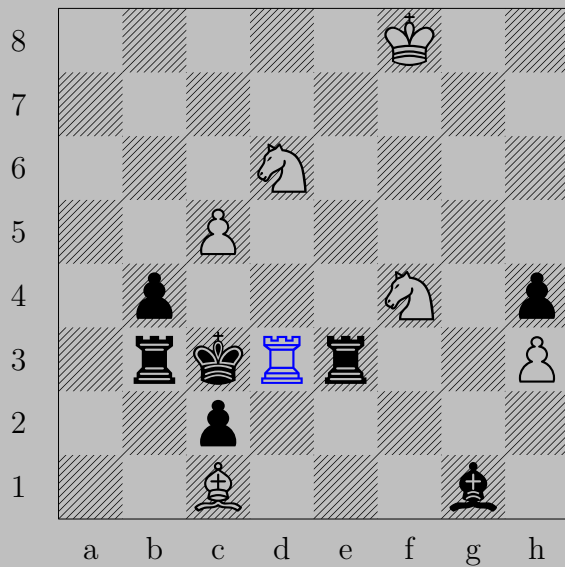
if ♞×f6, ♞c5. If ♗×f6, ♖×f4.





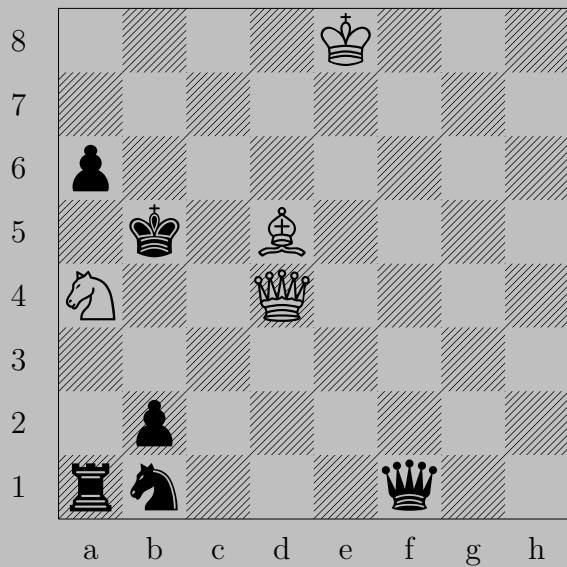
$\text{Rc4+}, \text{Rxc4}$
 Nb5

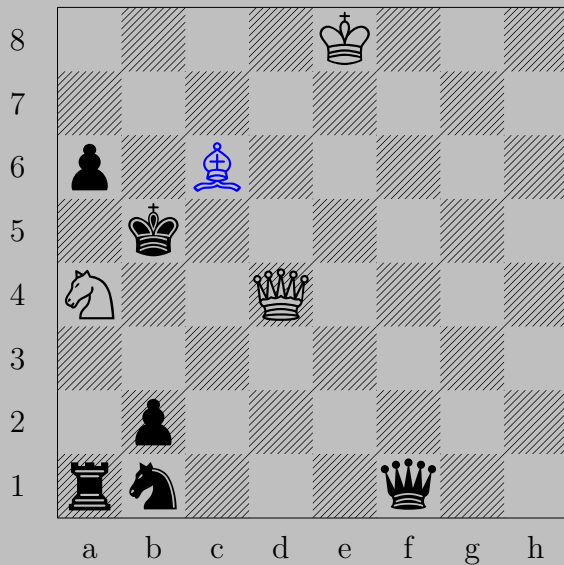




♖d3+, ♖x3

♘e2

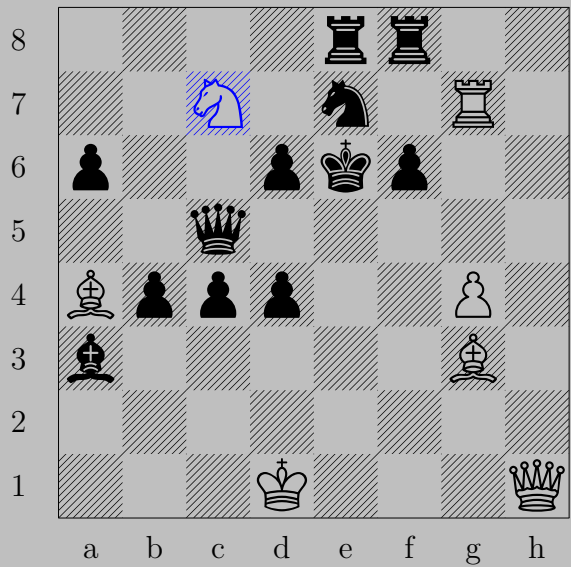




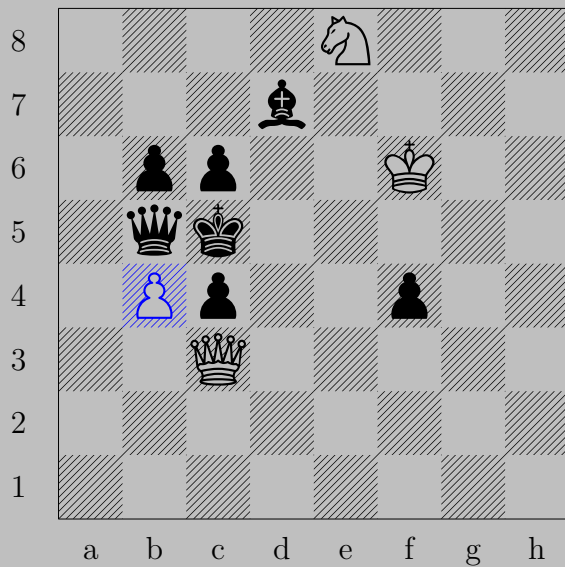
♔c6+

If ♕×c6, ♔d7. If ♕a5, ♖b6.

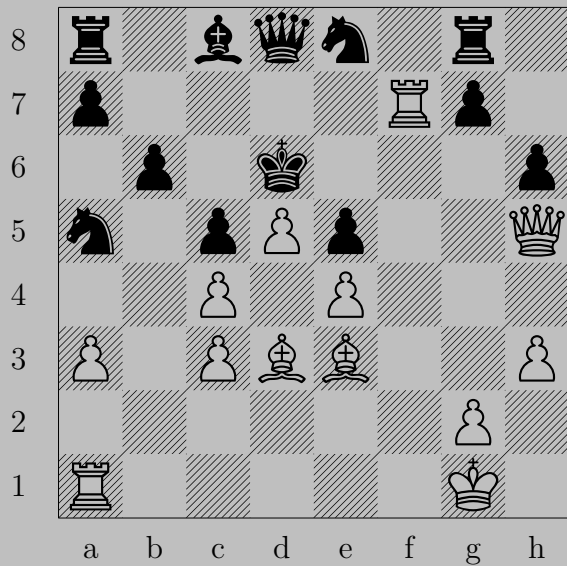


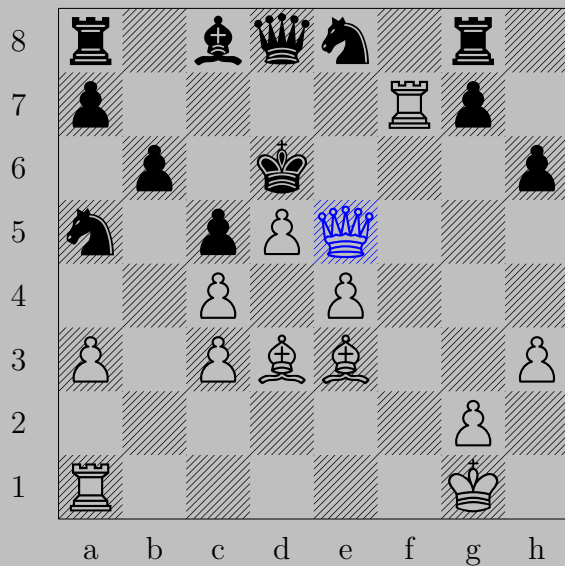


$\text{♞} \times c7+, \text{♔} \times c7$
 $\text{♔} e4$



♠b4+, ♚×b4
♚e5



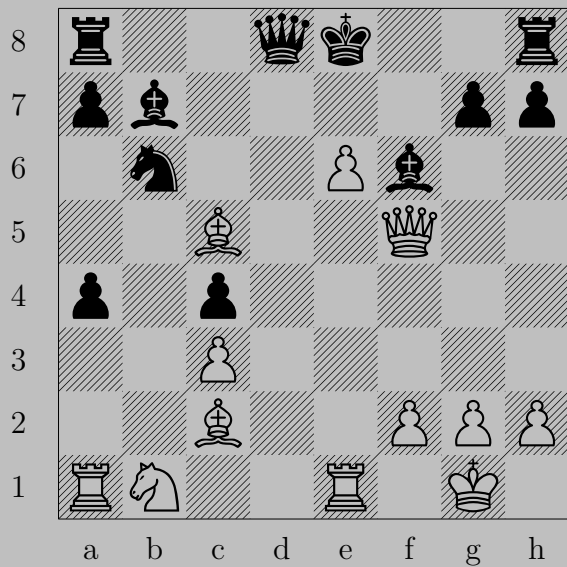


♔×e5+, ♕×e5
♗f4



♙f8+

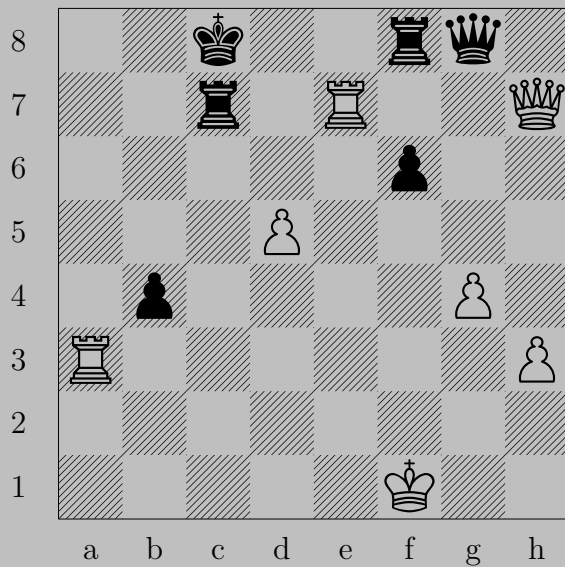
if ♚xf8, ♖h8. If ♚h7, ♖xh6.

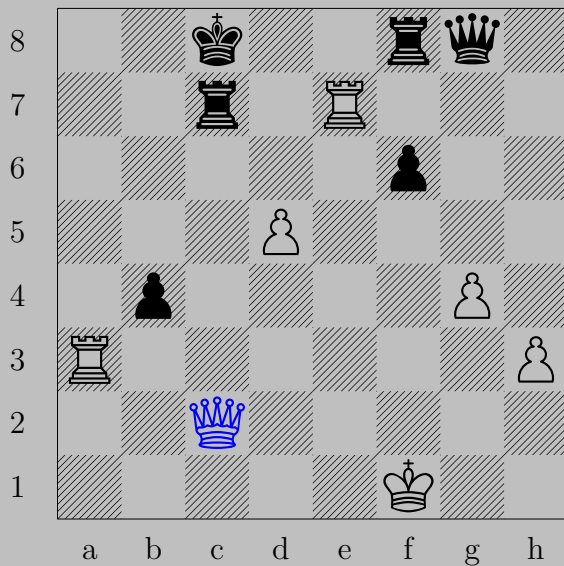




♔g6+, ♕×g6

♖×g6

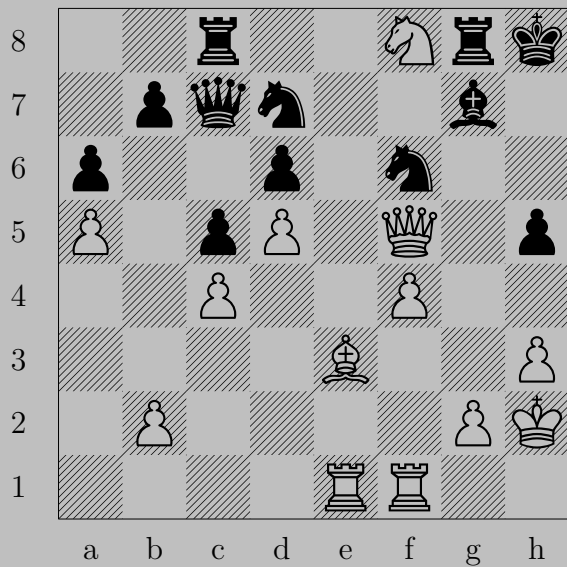


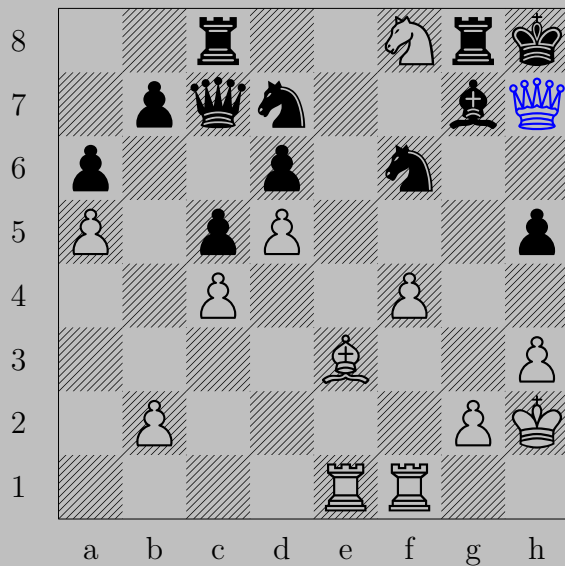


♙c2

If ♖xc2, ♖a8.

Otherwise, ♙xc7.

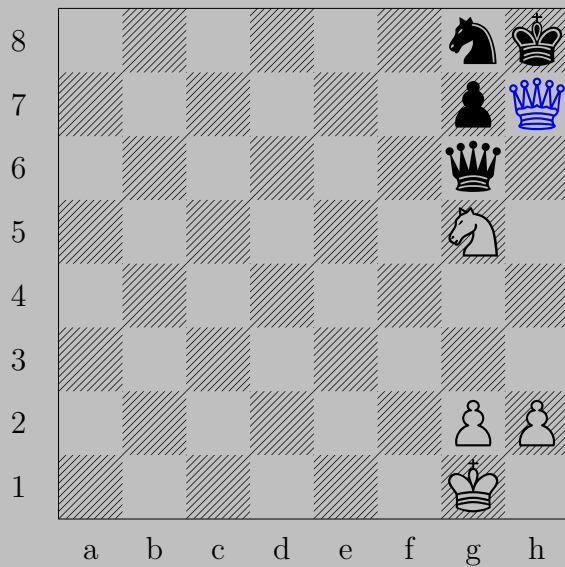




♔h7+, ♘xh7
 ♘g6

857

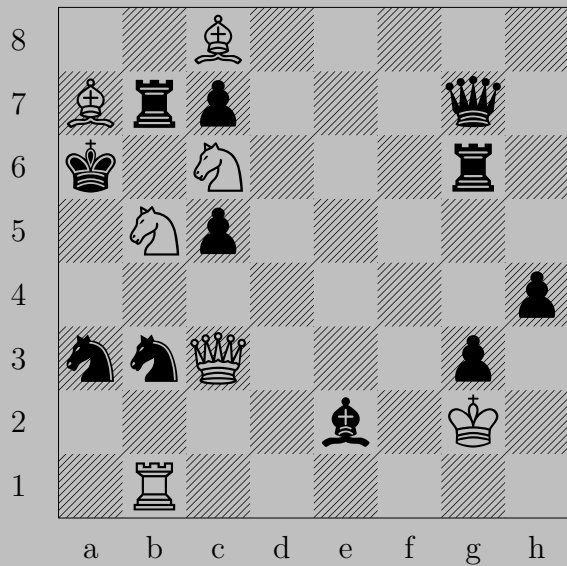


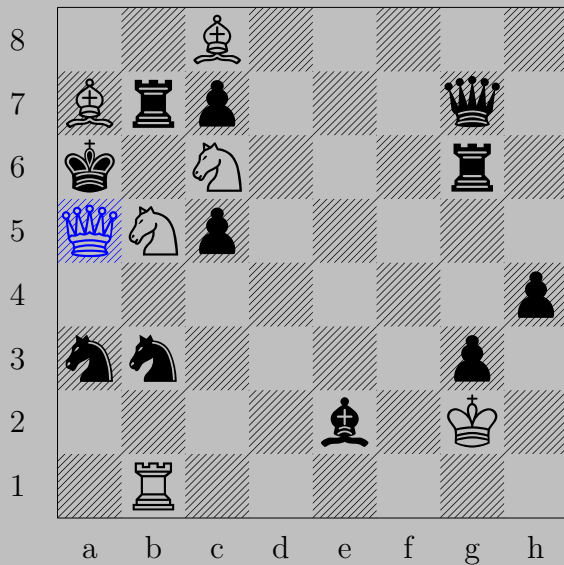


♔×h7+, ♔×h7
♘f7

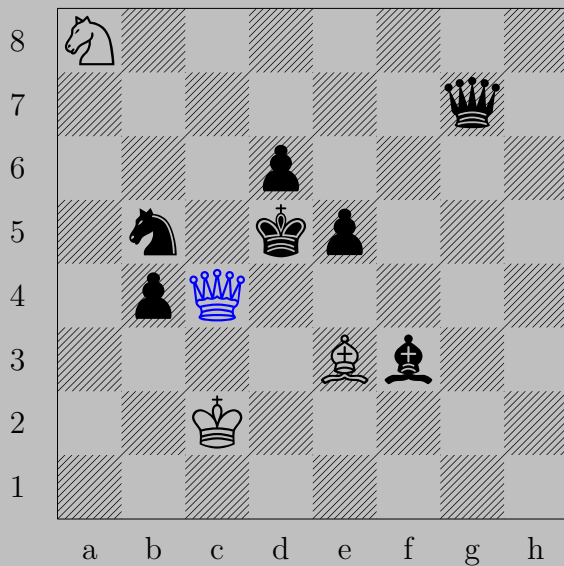


♙g8+, ♖xg8
 ♖xg8

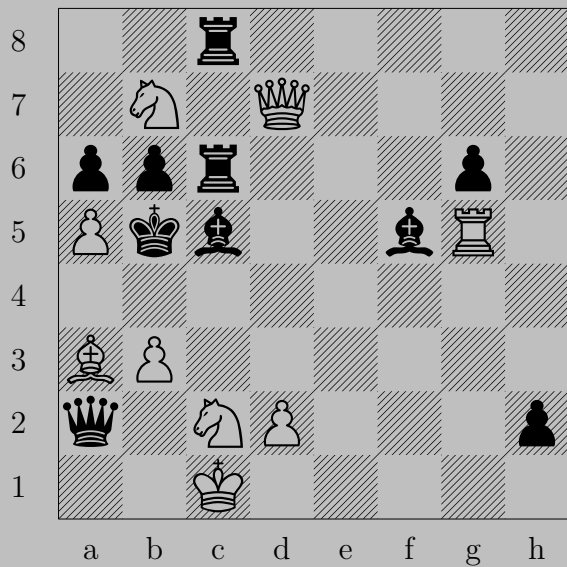


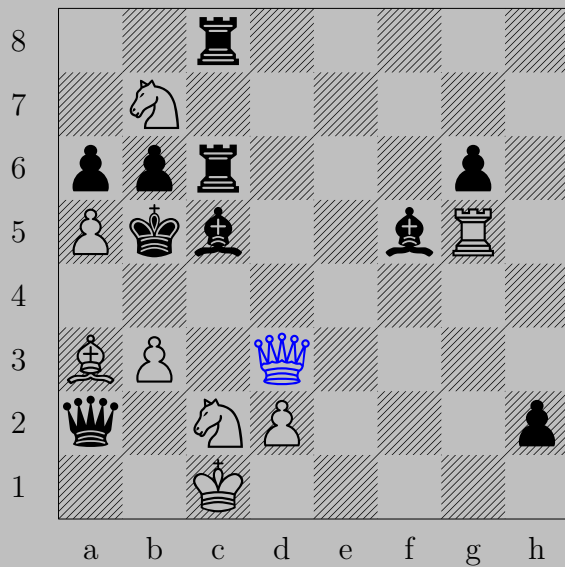


♔a5+, ♘x5
♘b8



♙c4+, ♚xc4
♞b6

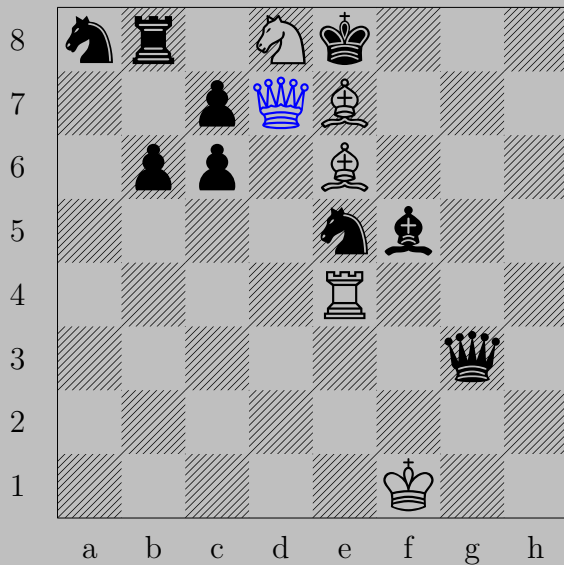




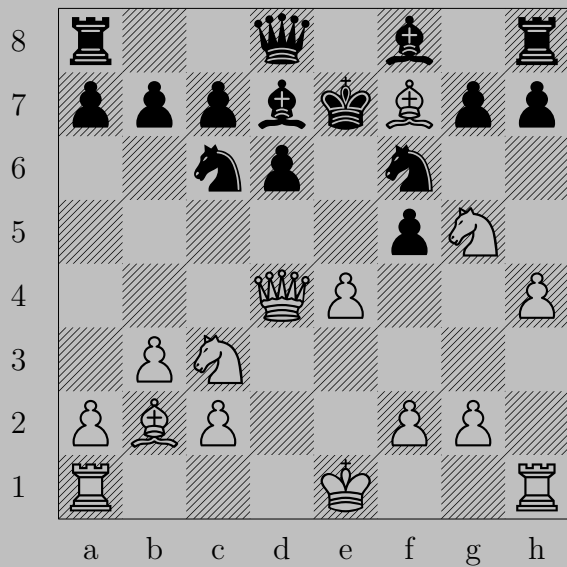
♙d3+, ♜xg3

♞d4



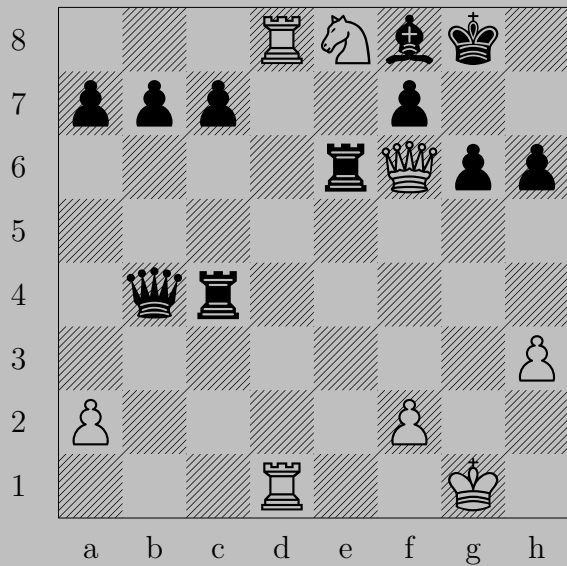


♔d7+, ♘xd7
♙f7



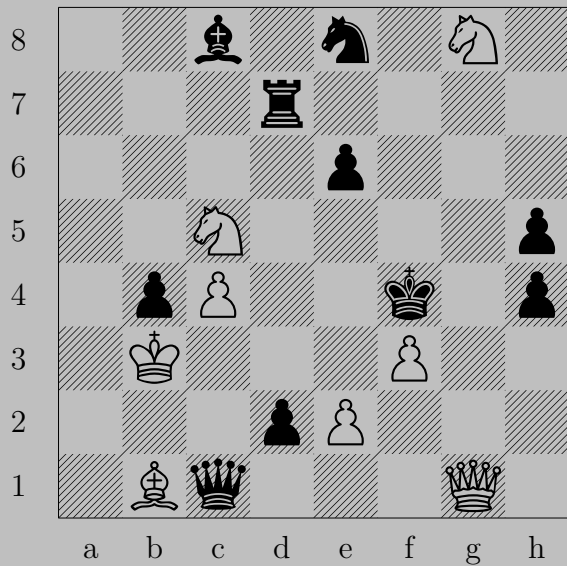


$\text{♙} \times f6+$, $\text{♜} \times f6$ or $\text{♚} \times f6$
 $\text{♞} d5$








♙g7+, ♖xg7
♘f6





g5+, xg5
xe6

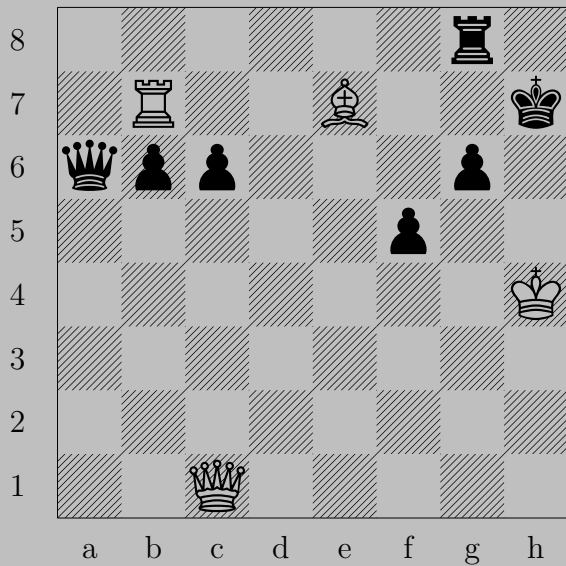


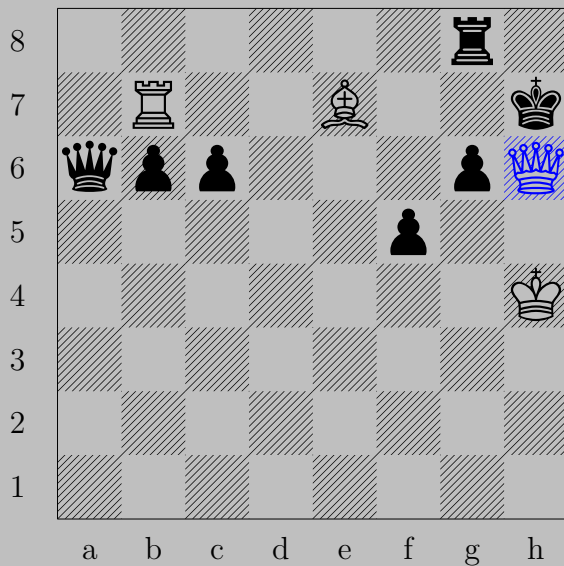


♚×h6+

If ♔×h6, ♖h3. If ♔g4, ♚g5.

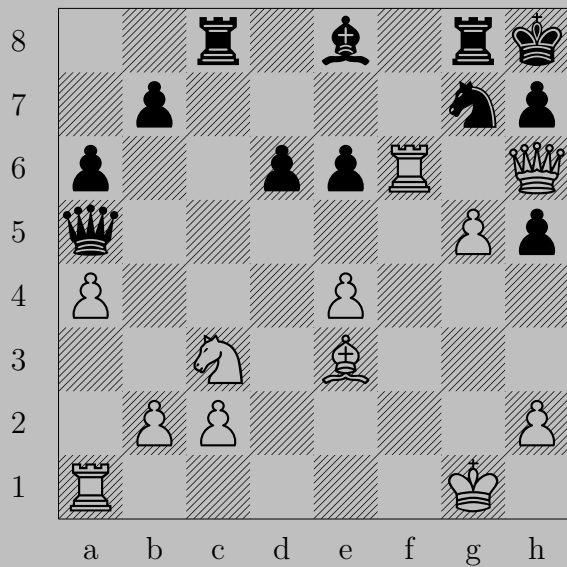
867

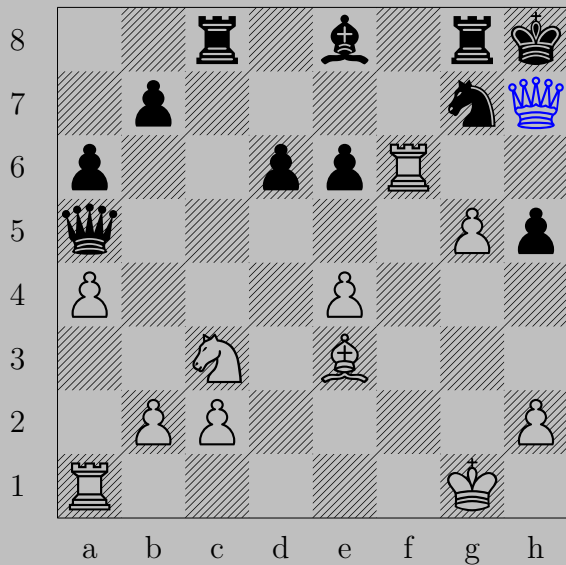




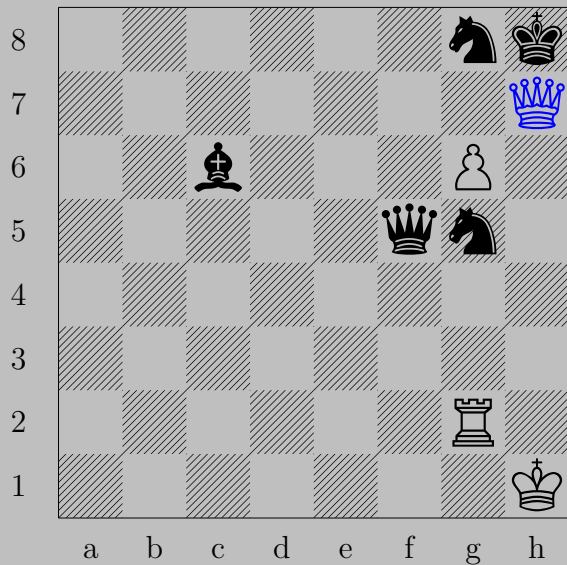
♙h6+, ♔×h6

♚g5

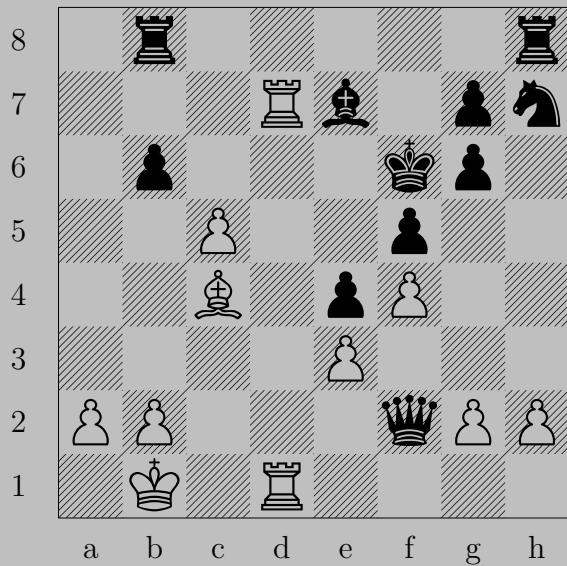


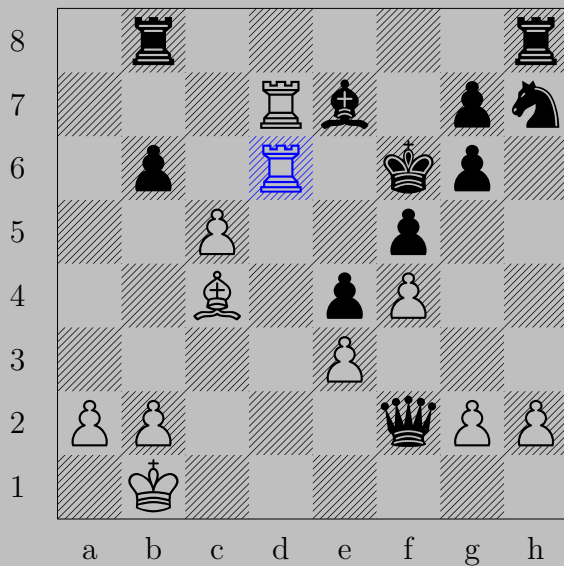


xh7+, xh7
h6



♚xh7+, ♞xh7
♙g7



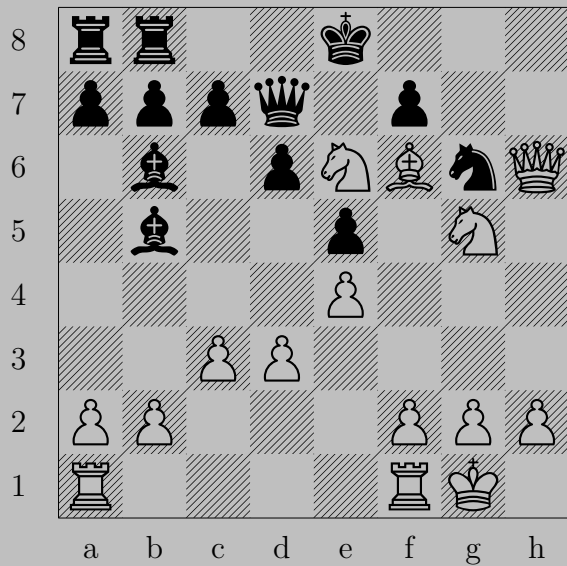


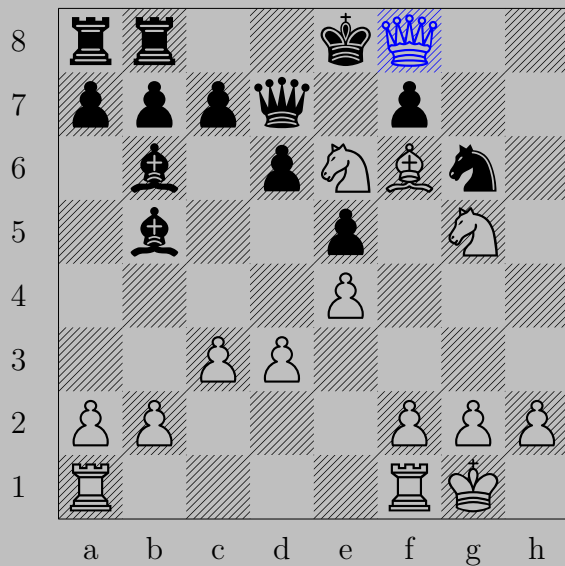
$\text{R}(d1)d6+, \text{N}\times d6$

$\text{R}f7$



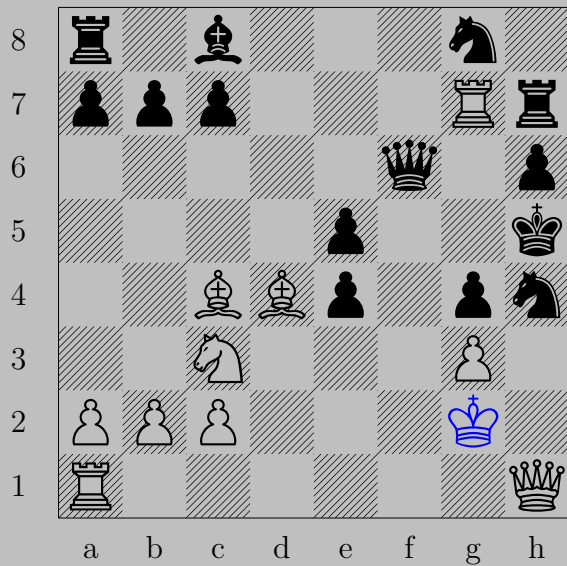
♙×f6+, ♚×f6
♜d4

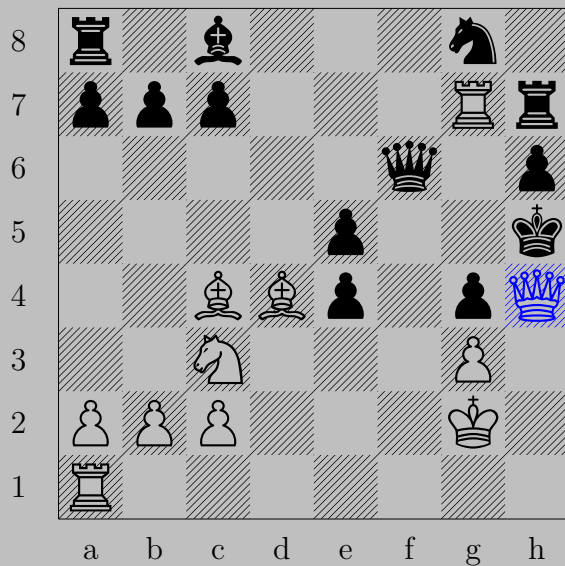




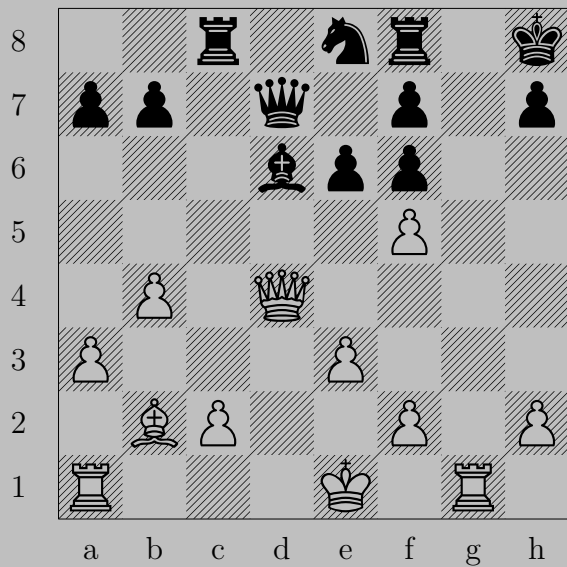
♔f8+, ♖xg8

♘g7





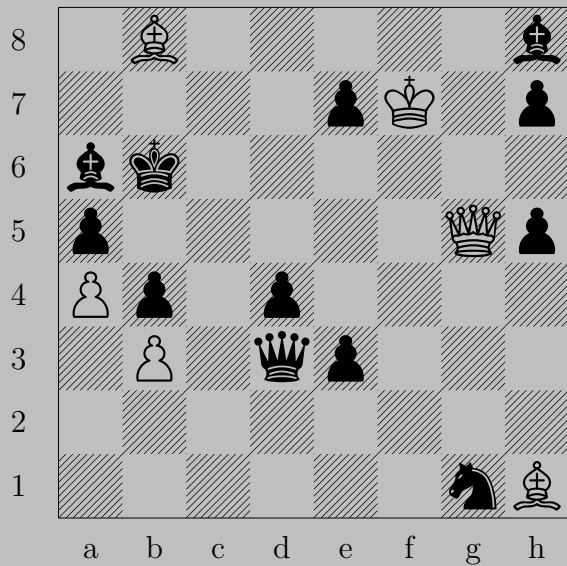
♔×h4+, ♔×h4
♘f7



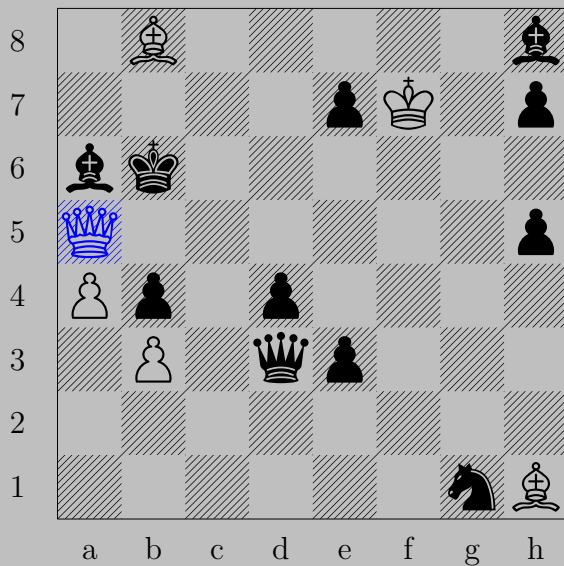


$\text{♔} \times f6+$

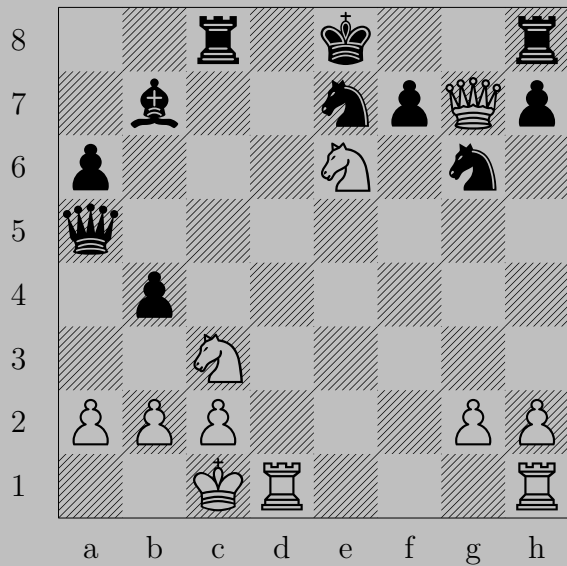
If $\text{♞} \times f6$, $\text{♕} \times f6$. If $\text{♞} g7$, $\text{♔} \times g7$.



875



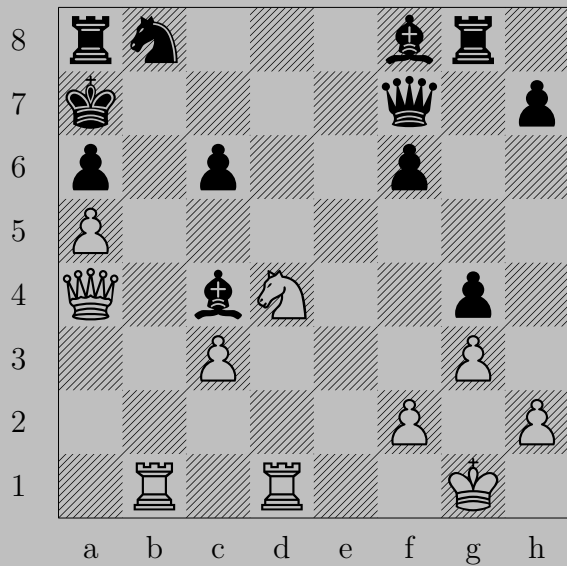
♙xa5+, ♚xa5
♞c7





♙f8+, ♖x8 or ♘x8

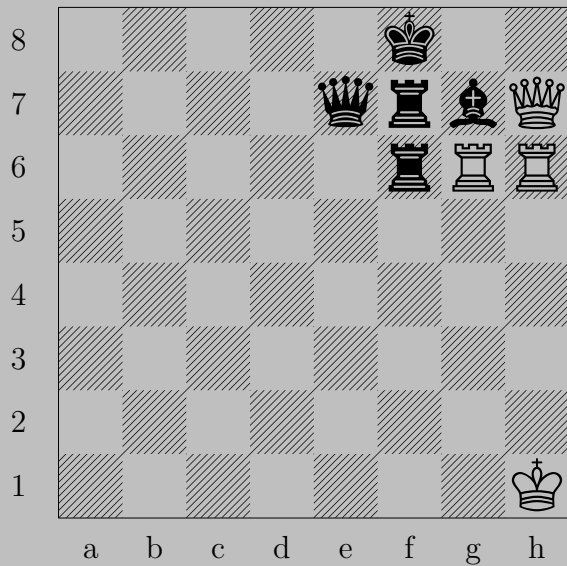
♘g7

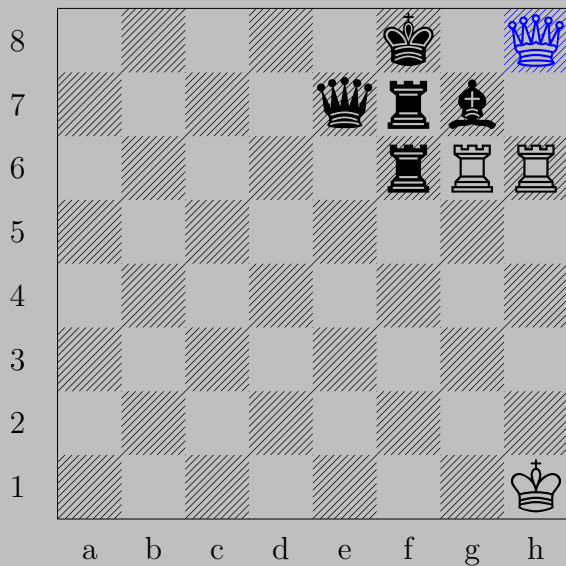




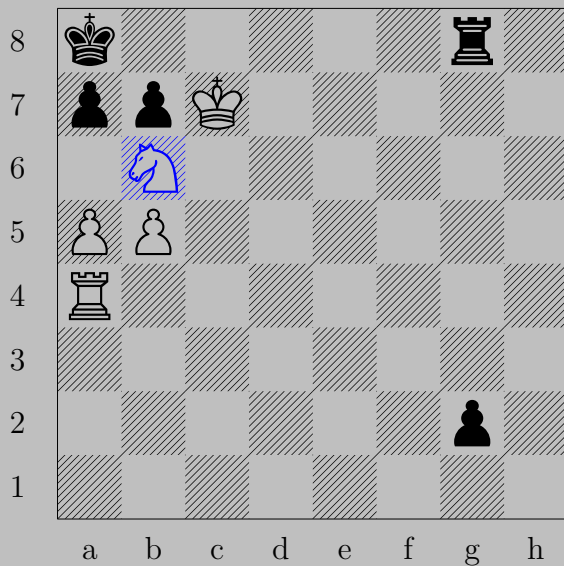
♙xc6

If ♘xc6, ♘xc6. If ♚b7, ♚xb7. If ♚c7, ♚xc7. If ♞d7, ♚b7. If ♙c5, ♚xc5.
Otherwise, ♚b6.

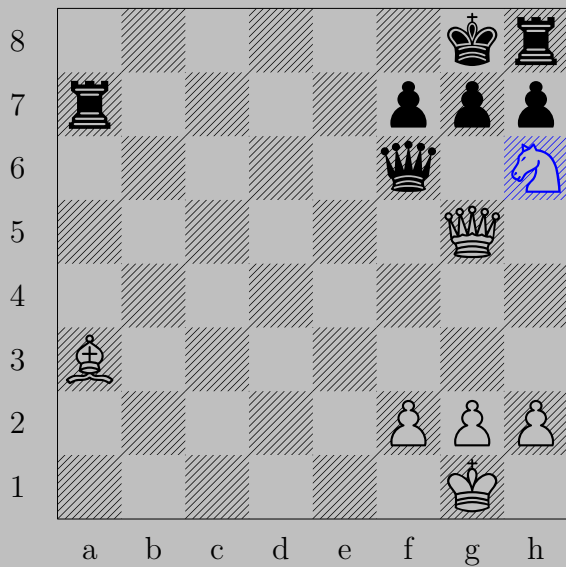




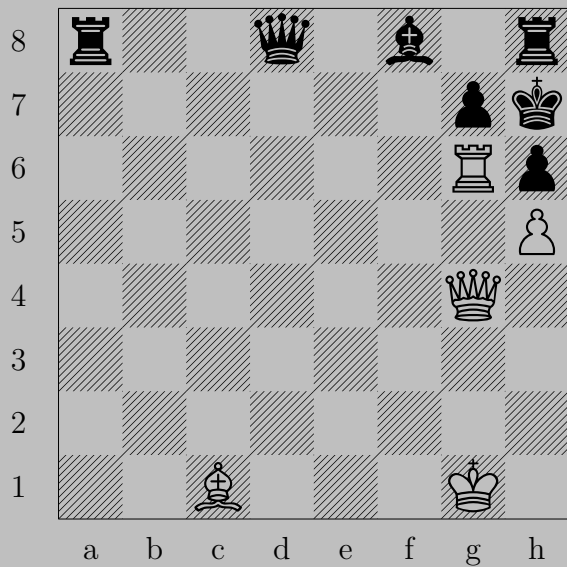
♔h8+, ♕xh8
♖xh8

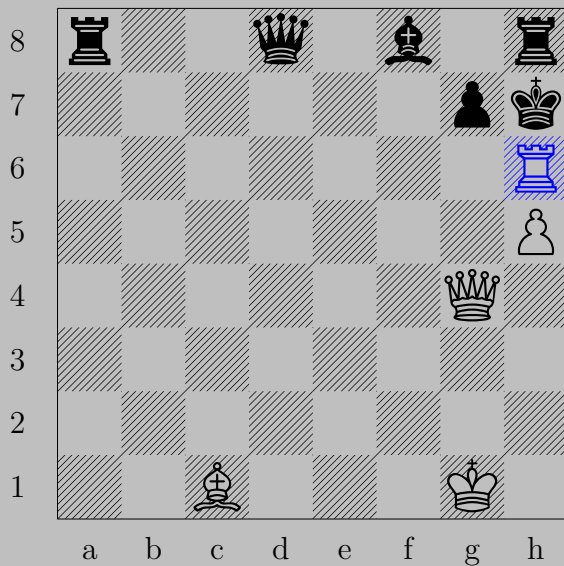


♞b6+, ♙x♞b6
♙x♞b6



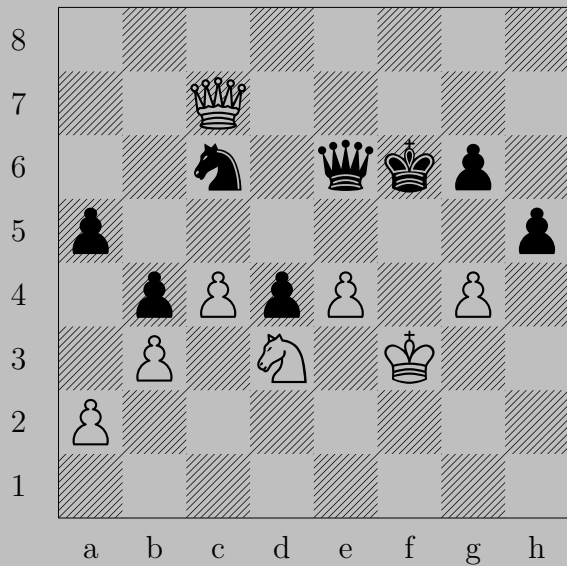
$\text{♞h6+}, \text{♔}\times\text{h6}$
 ♔d8

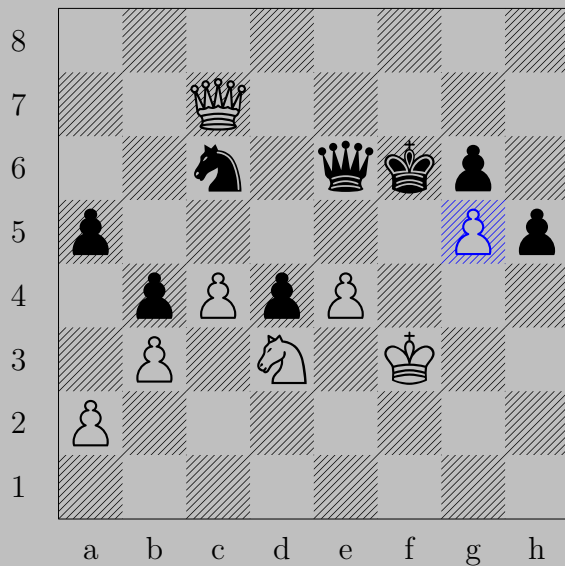




$\text{R} \times \text{h6}+$

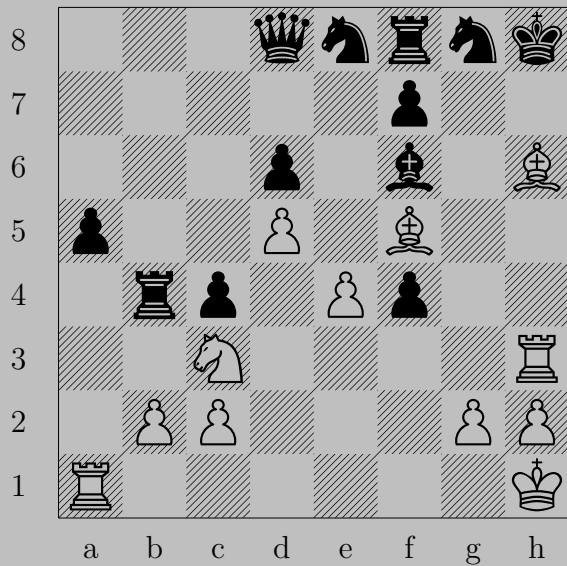
If $\text{P} \times \text{h6}$, $\text{Q} \times \text{g6}$. If $\text{K} \times \text{g8}$, $\text{Q} \times \text{e6}$.

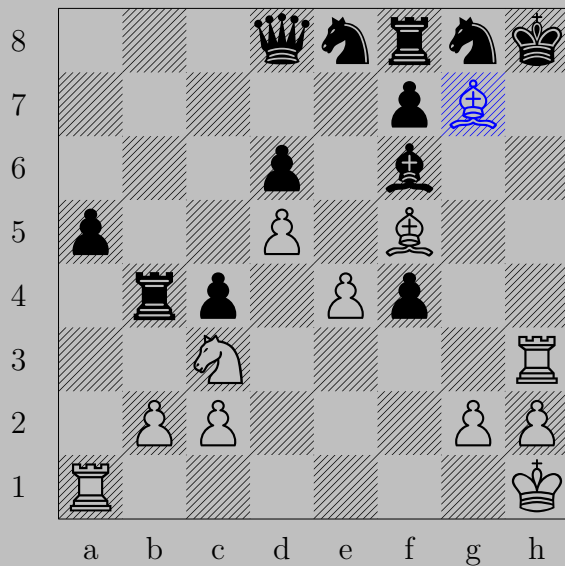




♙g5+, ♔xg5

♔f4



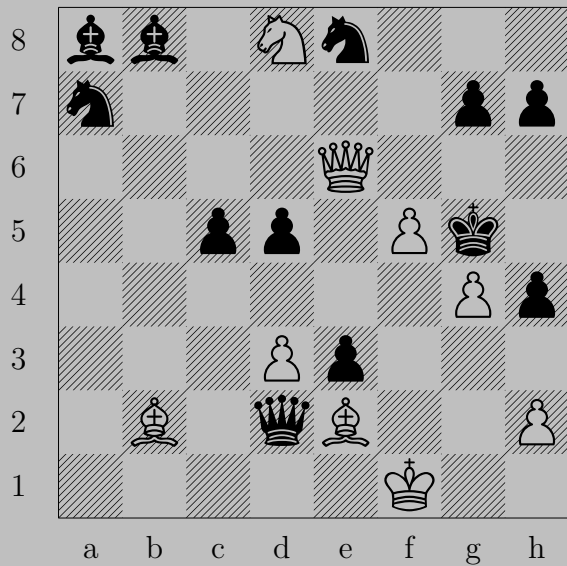


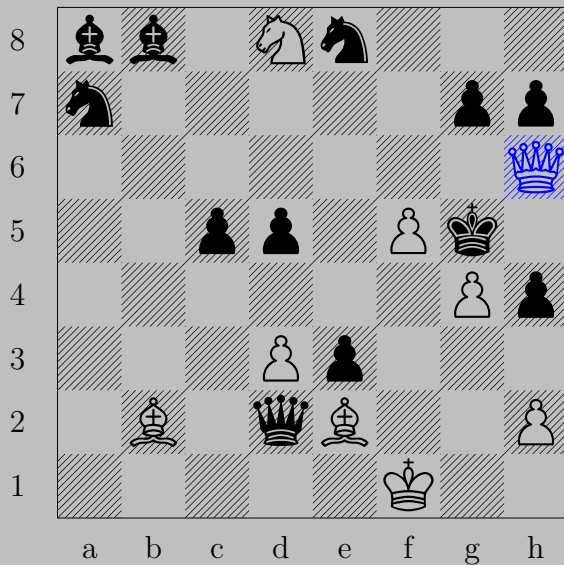
♖g7+, ♔xg7
♖h7



♖e8+, ♞xe8

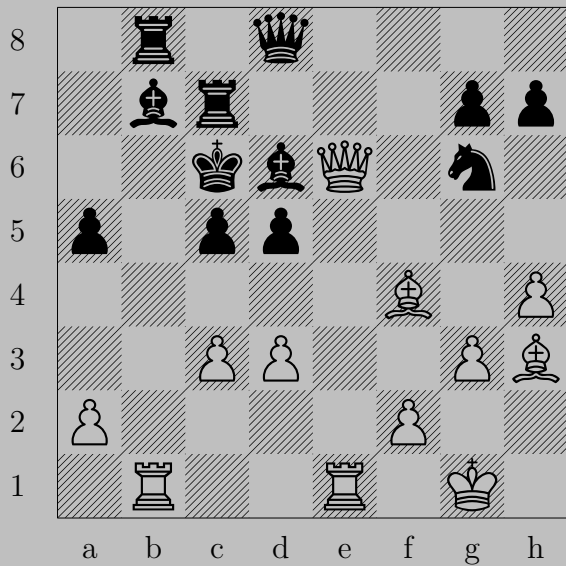
♚f8





♙h6+

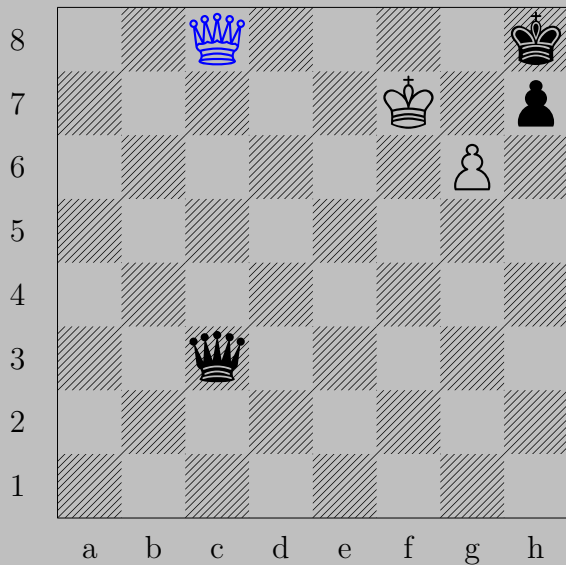
If ♖xh6, ♘e6. If ♚xh6, ♘f7.



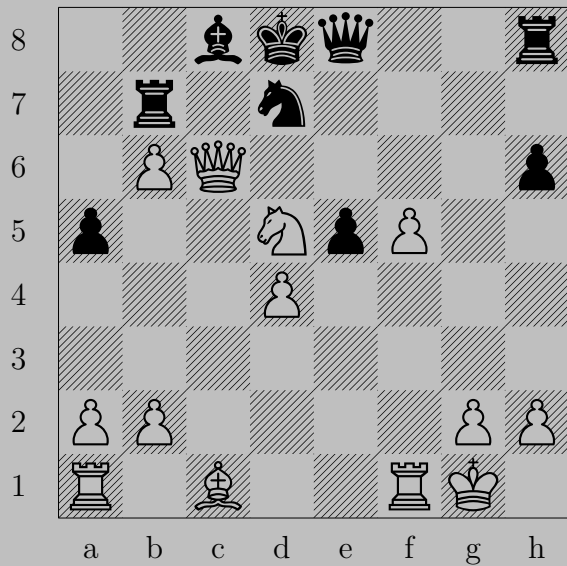


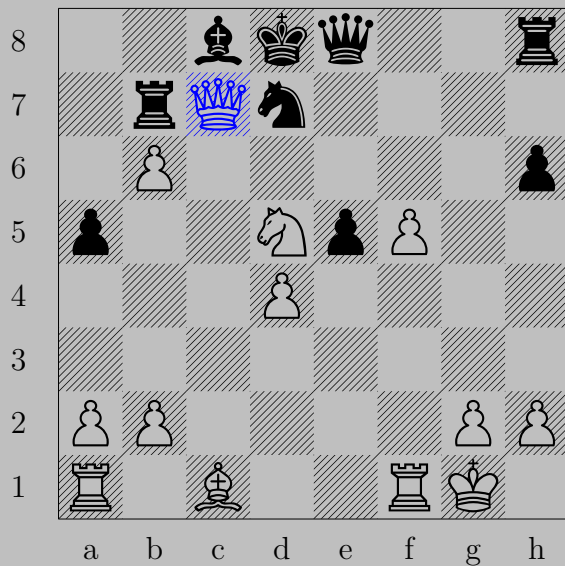
♔×d5, ♕×d5
♖g2

887

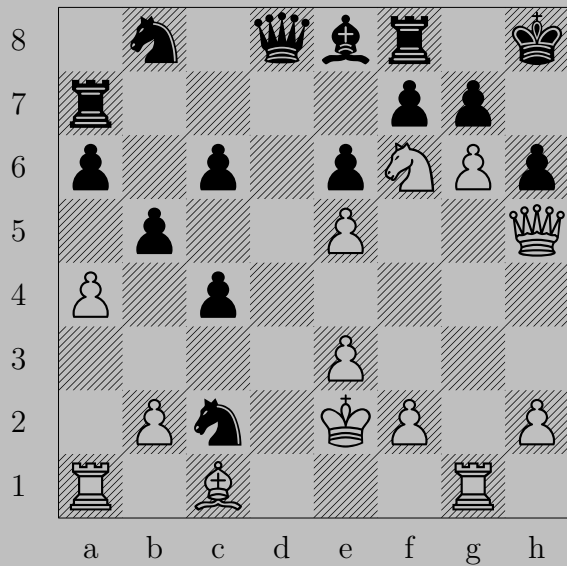


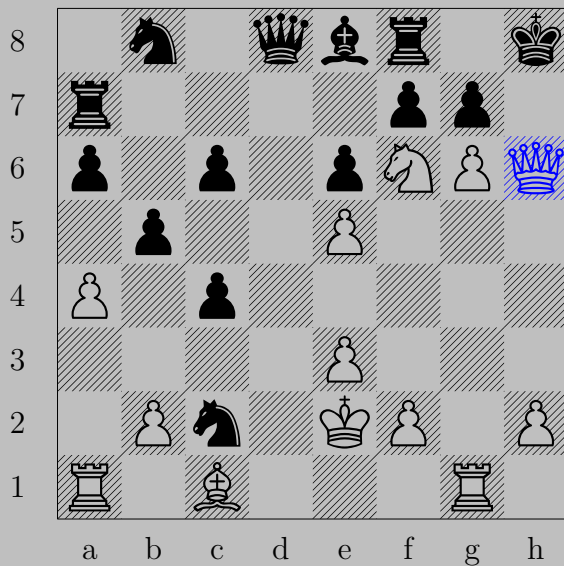
♔c8+, ♔xc8
♕g7



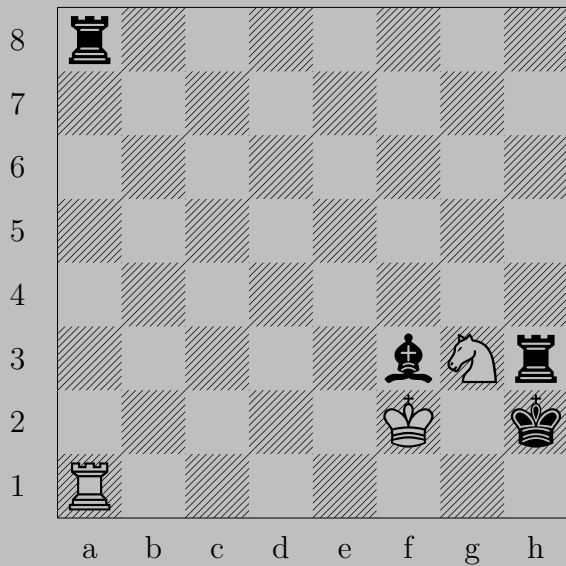


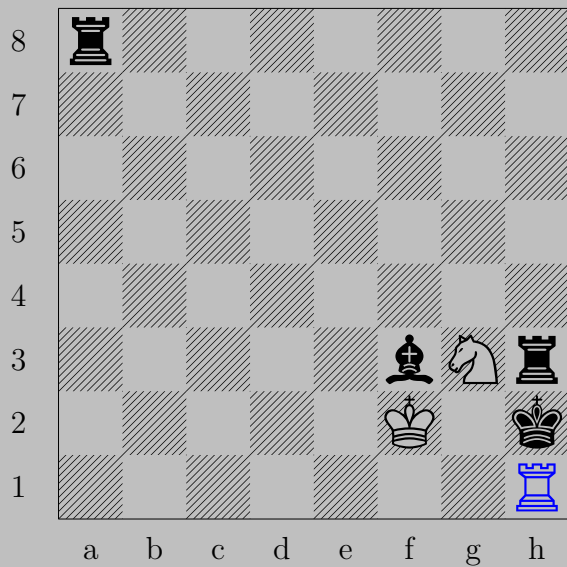
♙c7+, ♖xc7
 ♗xc7





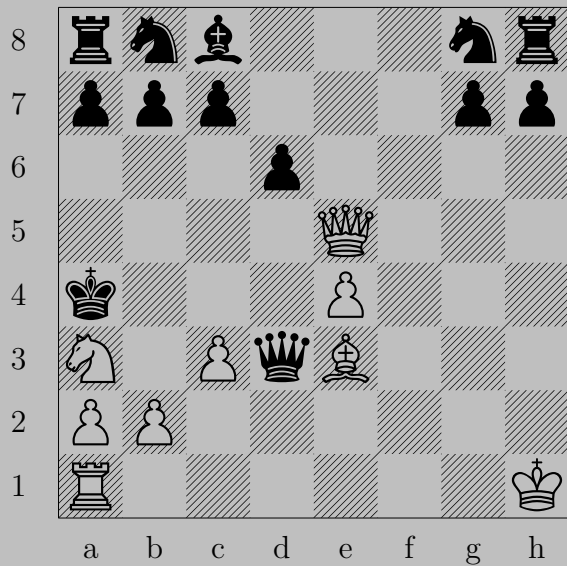
♙xh6+, ♚xh6
 ♙g7

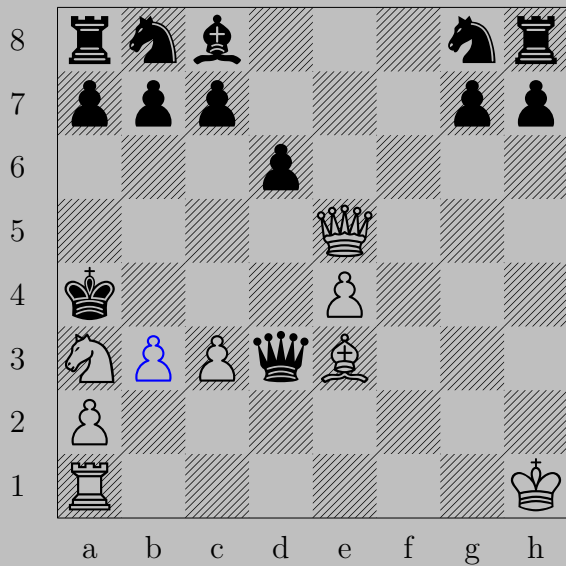




$\text{R}h1+, \text{K}xh1$

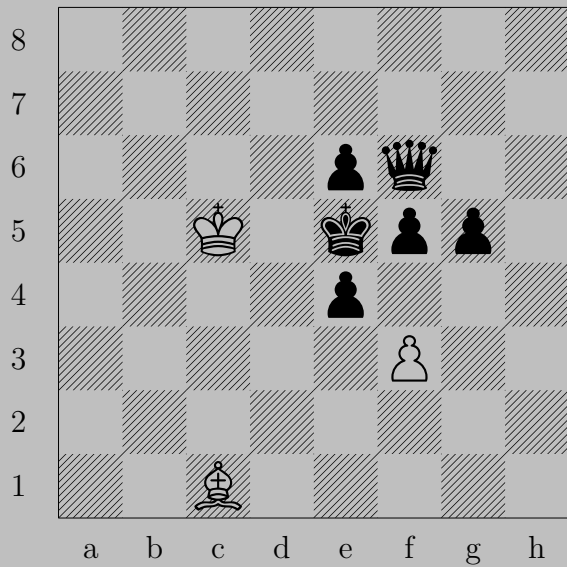
$\text{N}f1$





♖b3+, ♔xa3

♘c1



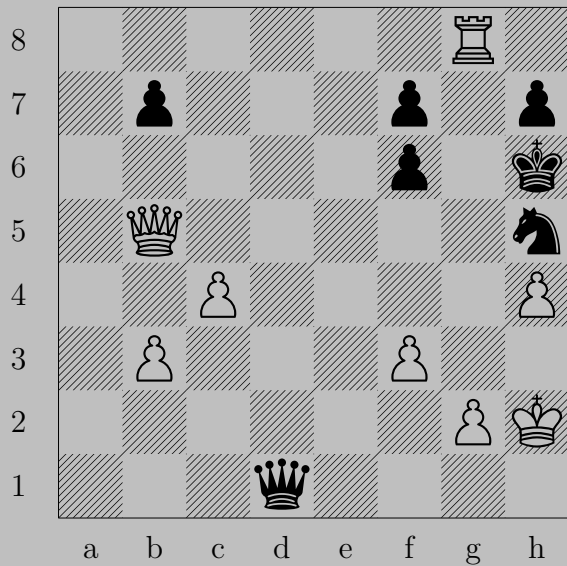


♔f4+, ♕×f4

♗b2



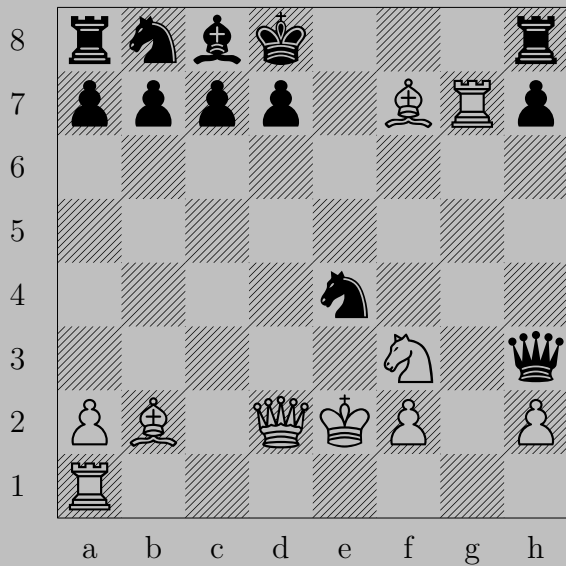
♔g5+, ♖xg5
 ♕xg5





♙g5+, ♖xg5

♖xg5





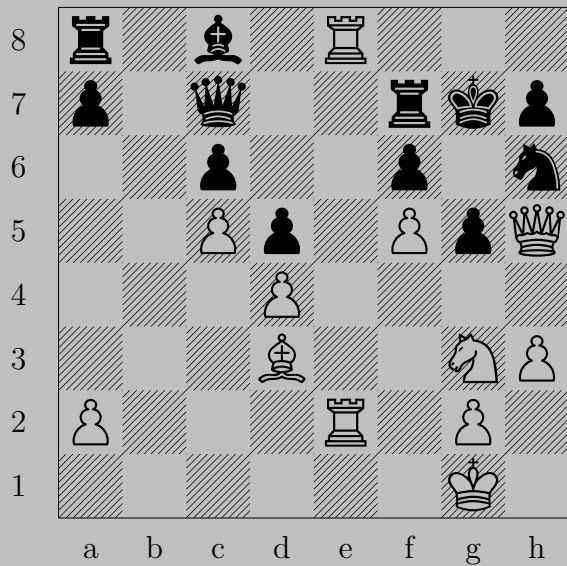
♙g5+

If ♗×g5, ♕f6. If ♘f6, ♕×f6.



♙g5+

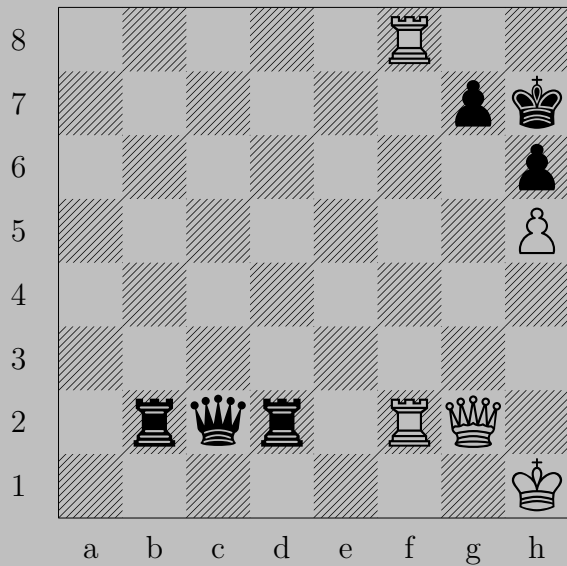
If ♖×g5, ♘f4. If ♙h7, ♙×h5.





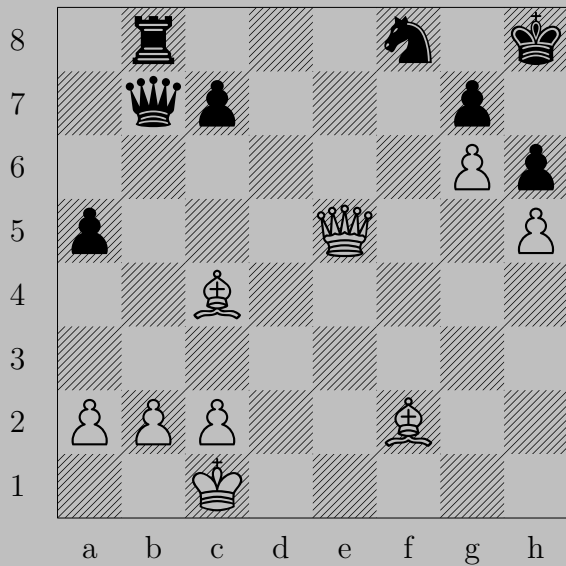
♔xg5+, ♕xg5

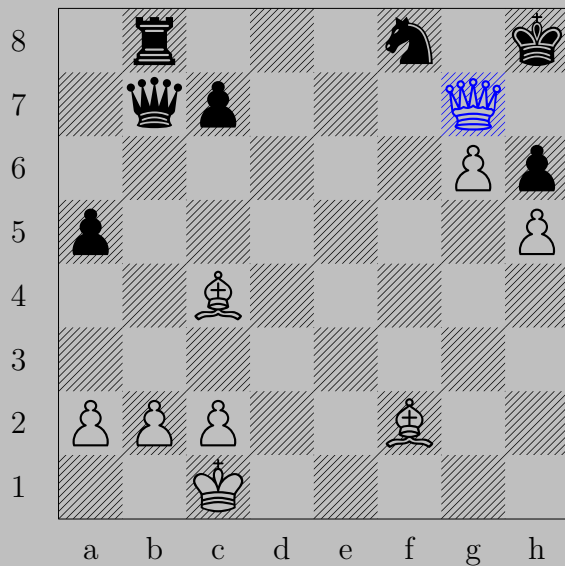
♞h5



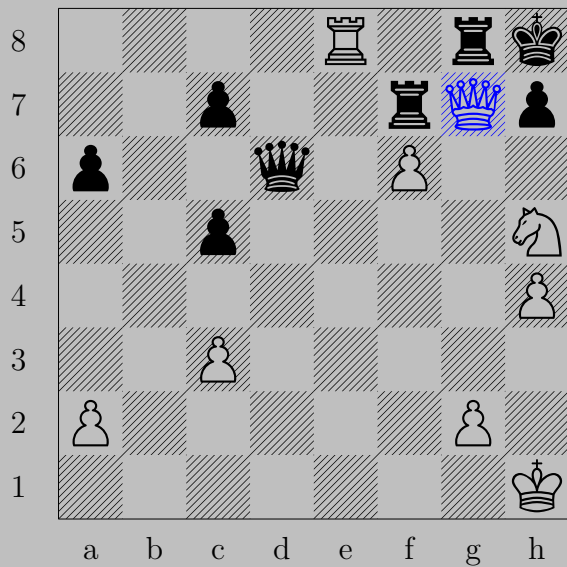





♙xg7+, ♚xg7
 ♖(f2)f7





♙xg7+, ♔xg7
♗d4



g7+, xg7
xg7