

Chess Puzzles

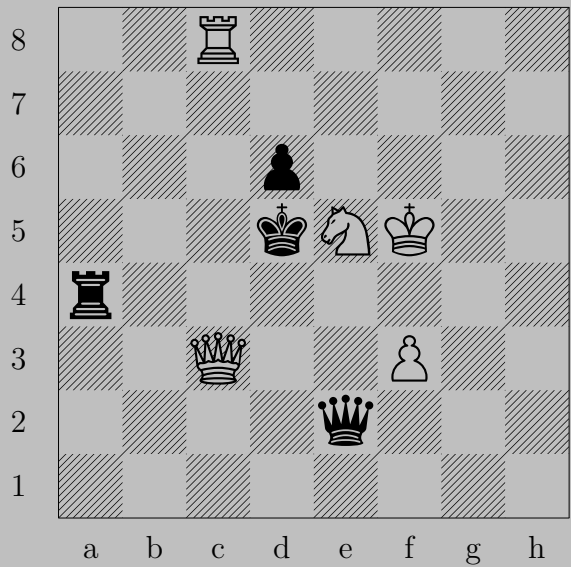
901-1000

Mate in Two
White to Move

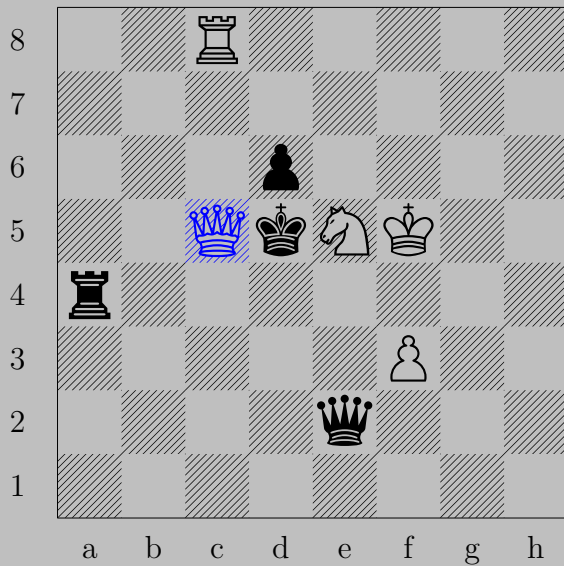
László Polgár

Links

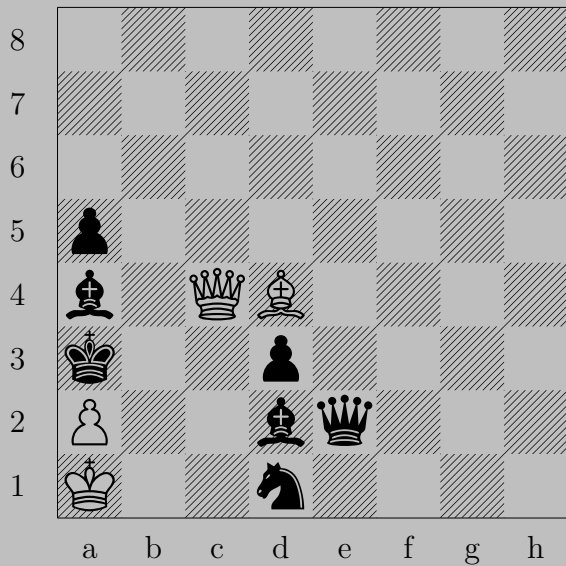
901 902 903 904 905 906 907 908 909 910
911 912 913 914 915 916 917 918 919 920
921 922 923 924 925 926 927 928 929 930
931 932 933 934 935 936 937 938 939 940
941 942 943 944 945 946 947 948 949 950
951 952 953 954 955 956 957 958 959 960
961 962 963 964 965 966 967 968 969 970
971 972 973 974 975 976 977 978 979 980
981 982 983 984 985 986 987 988 989 990
991 992 993 994 995 996 997 998 999 1000

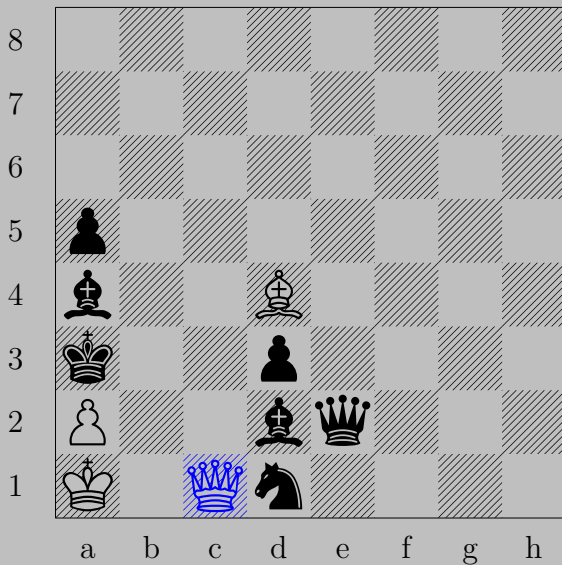


901



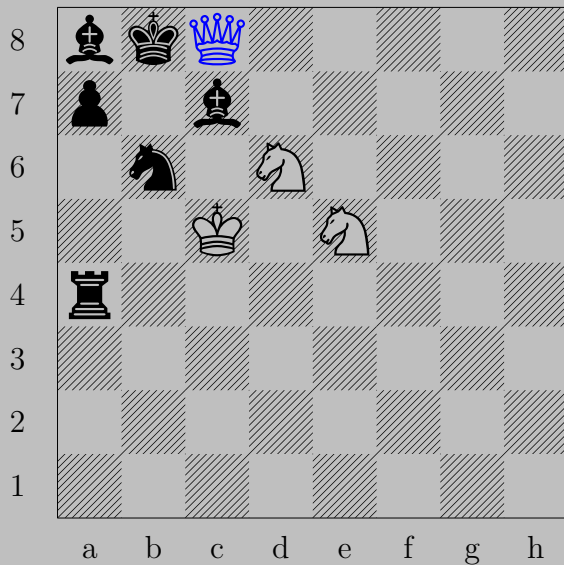
♙c5+, ♖xc5
♖d8



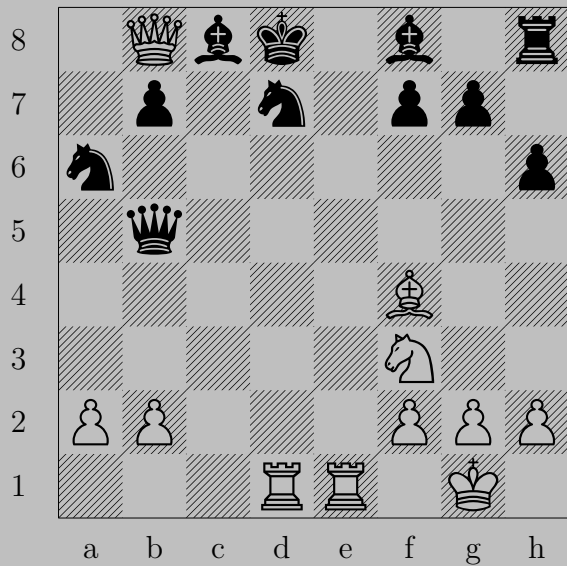


♔c1+

If ♕xc1, ♕c5. if ♔b4, ♔c5. If ♞b2, ♔xb2.

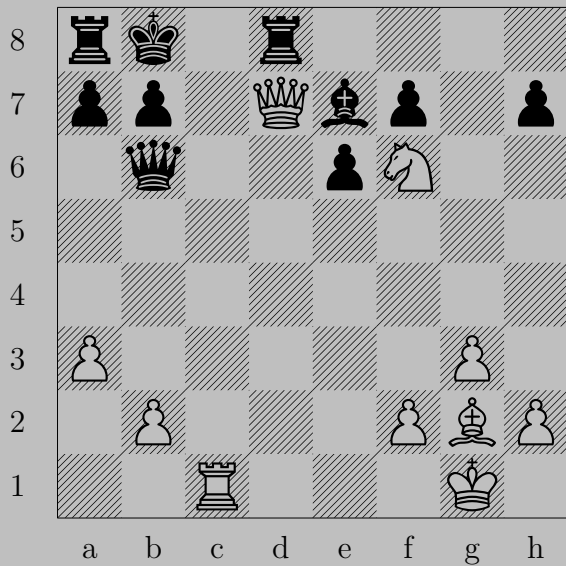


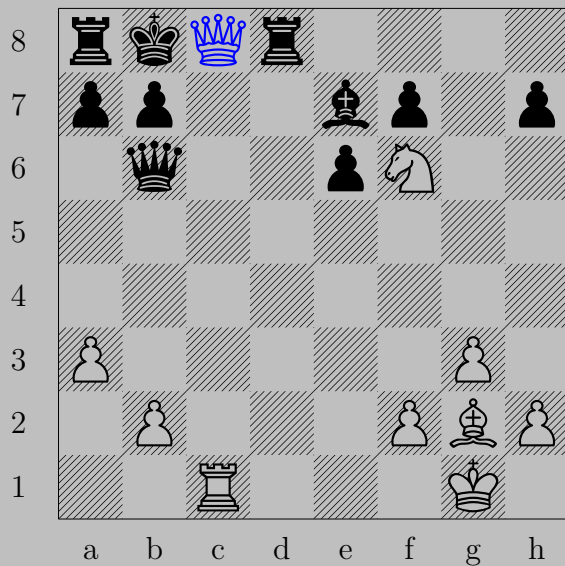
♛c8+, ♞xc8
♞d7





♙xc8+, ♚xc8
♖e8



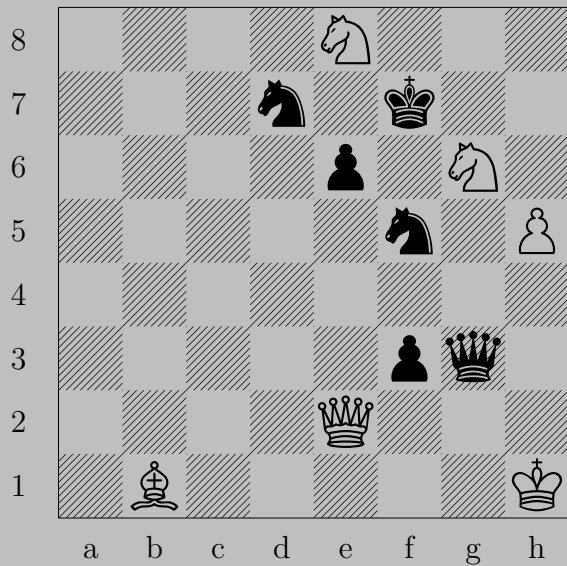


♙c8+, ♖xc8
♞d7

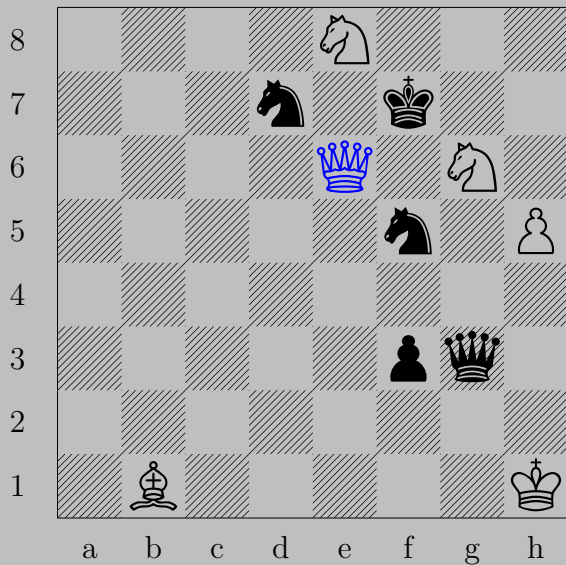




♙c8+, ♚xc8
♘d6



907



♙×e6+, ♔×e6
♗a2

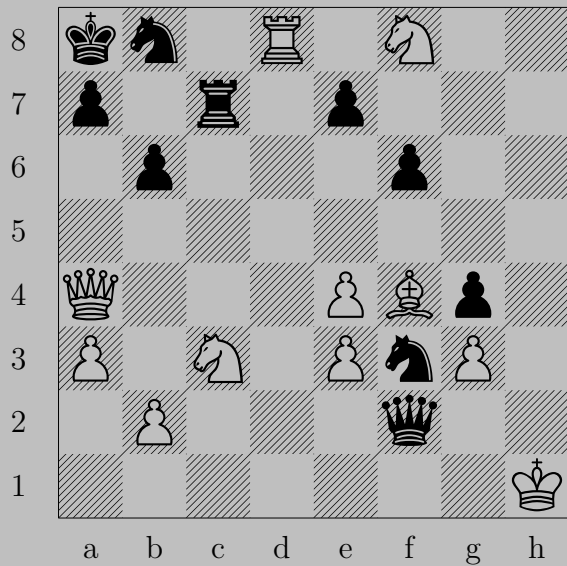


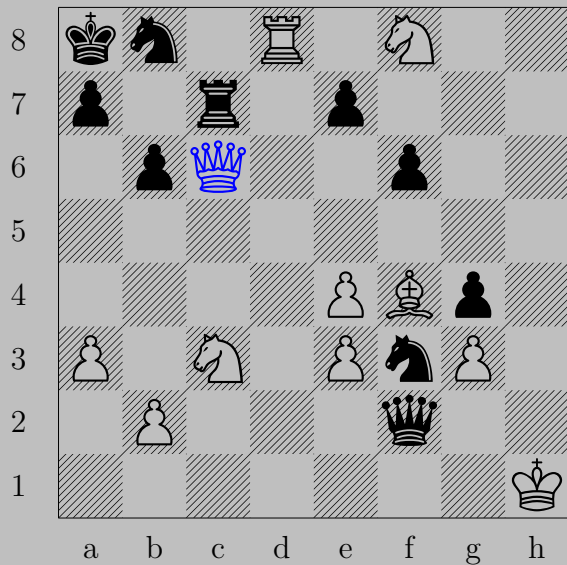
♔c6+

If ♖xc6, ♜d7. If ♔c7, ♔xc7.

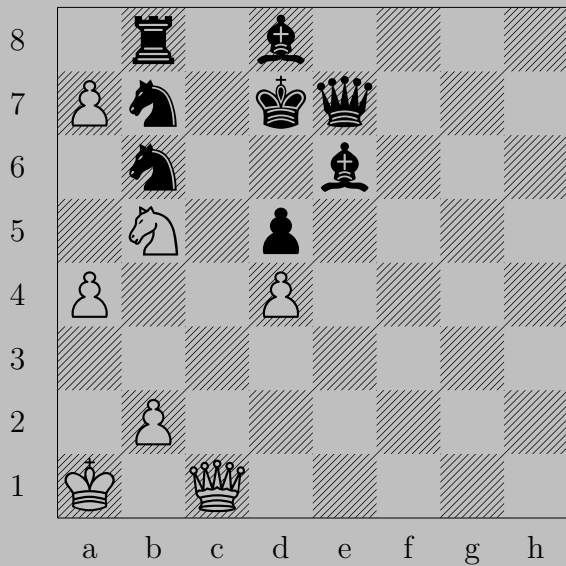


♔c6+, ♕xc6
 ♕xc6

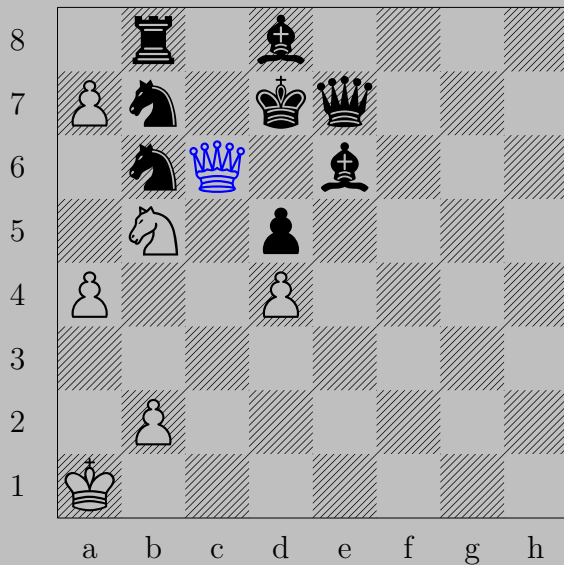




♙c6+, ♖xc6
 ♖xb8



911

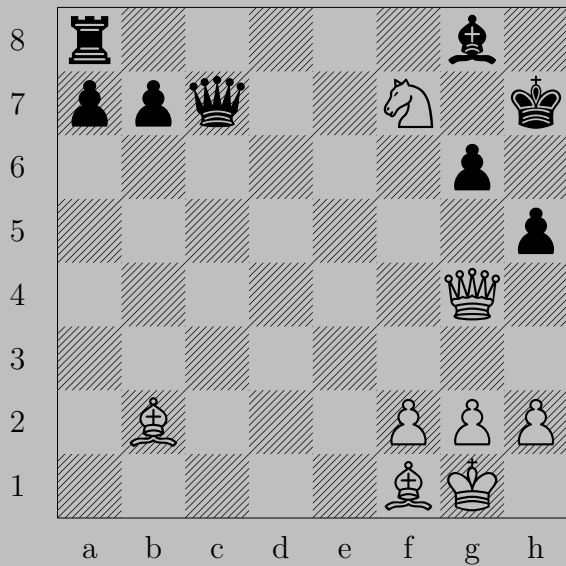


♙c6+, ♚xc6
♙xb8(♘)





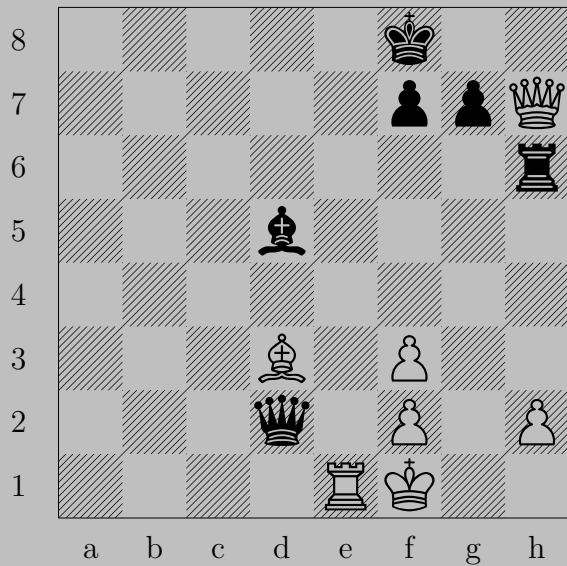
♙c7+, ♚xc7
♞d5

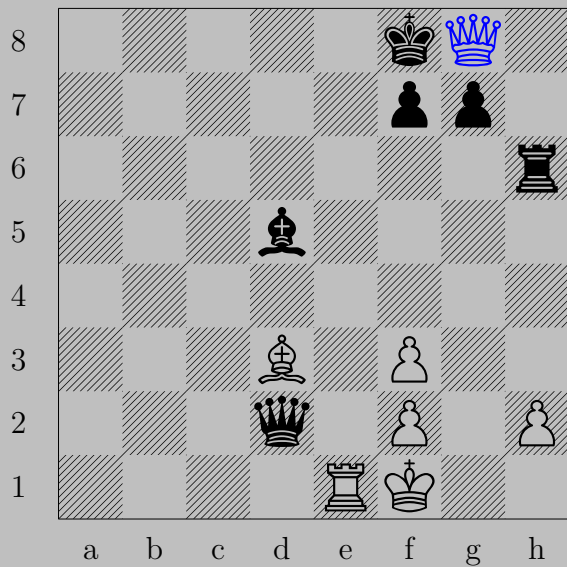







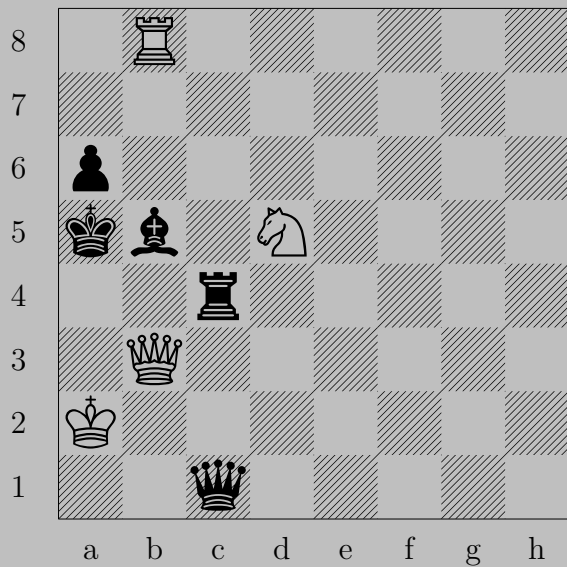
♙×h5+, ♖×h5

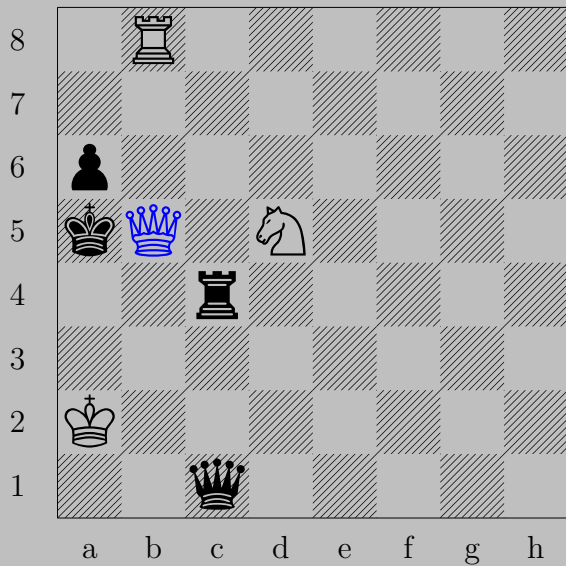
♗d3



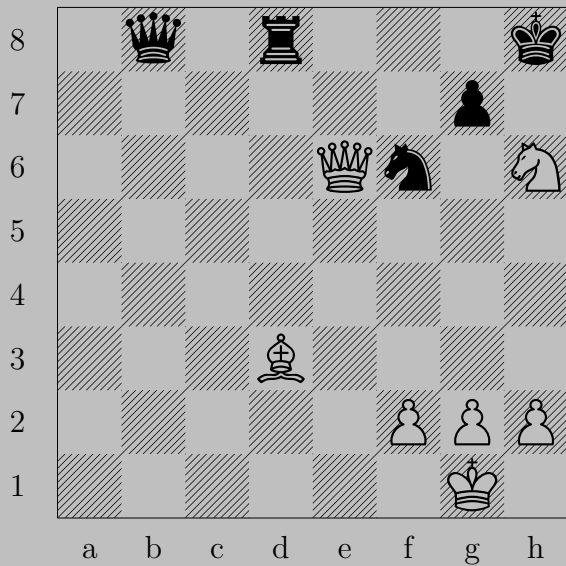


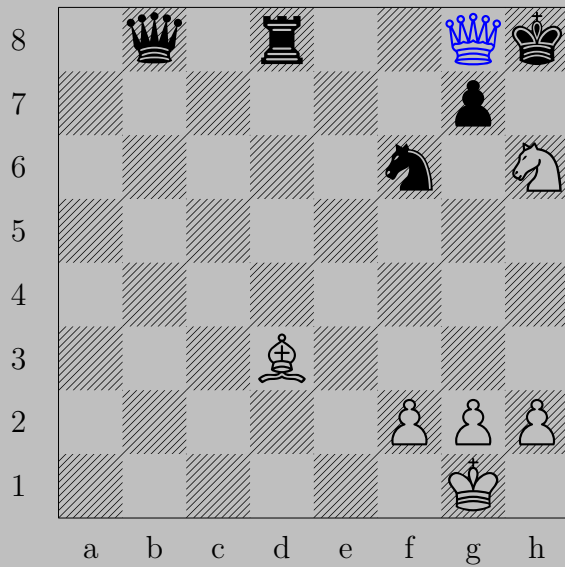
g8+, xg8
e8


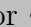









♙×b5+, ♖×b5
♖a8

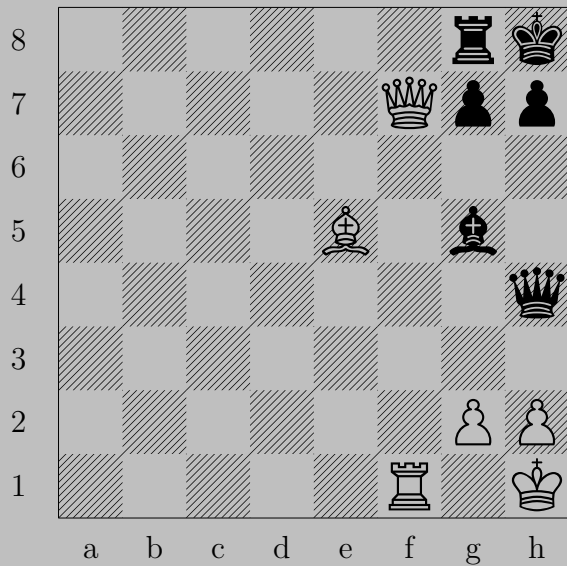




g8+, xg8 or xg8
f7

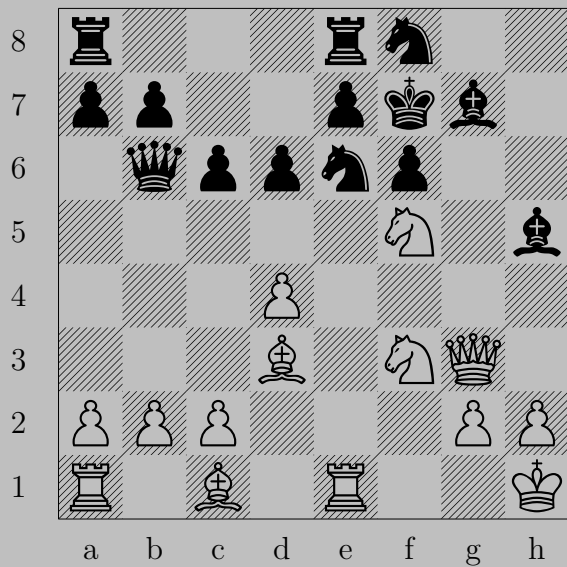


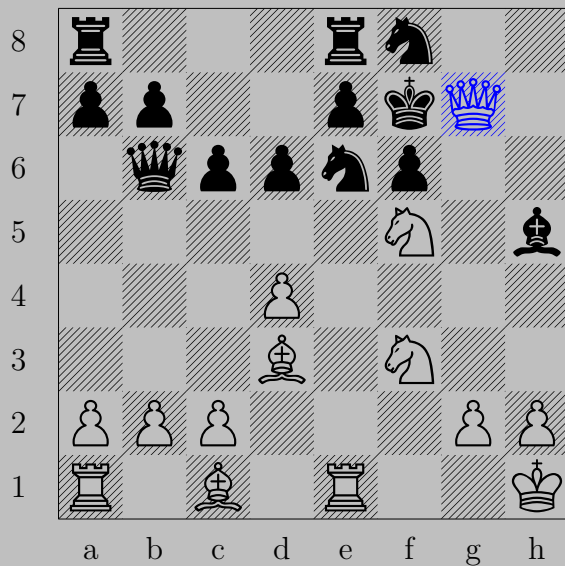
g8+, xg8
f6



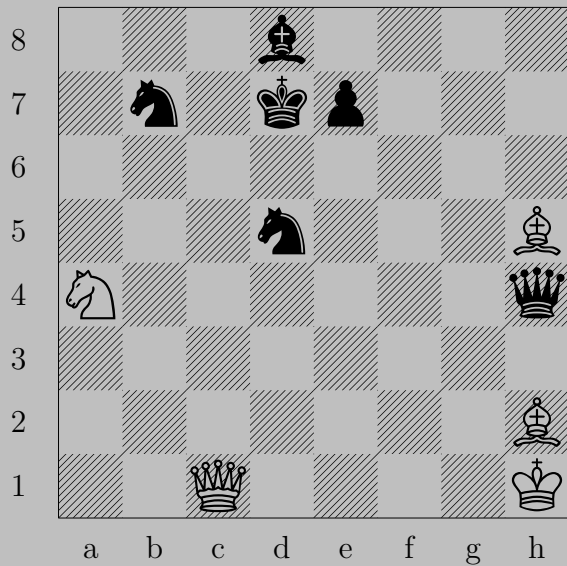


xg7+, xg7
f8





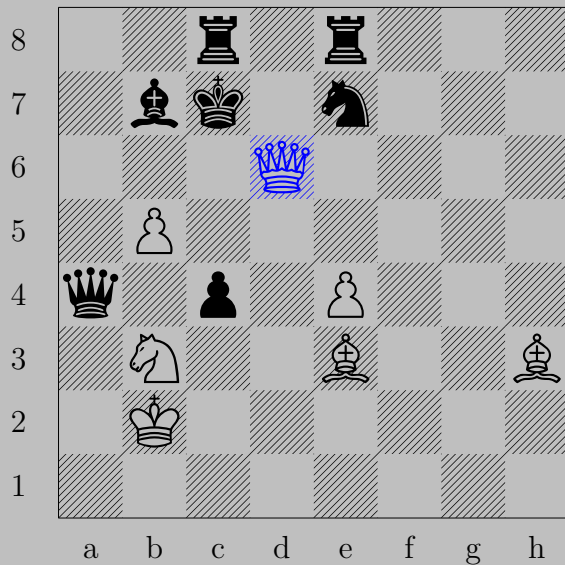
xg7+, xg7
h6





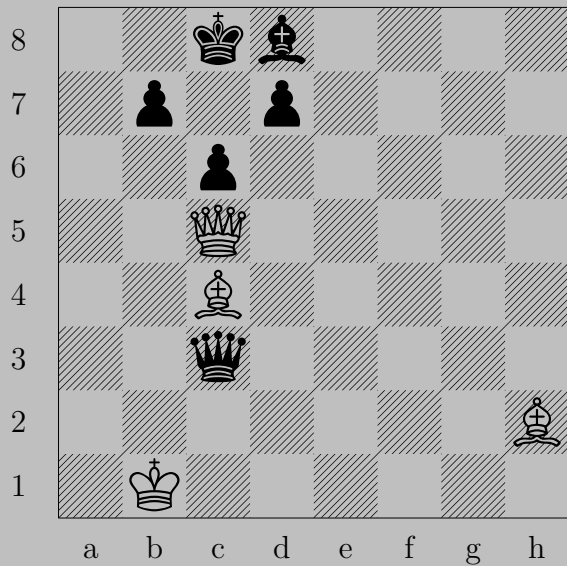
♚c6+, ♔xc6

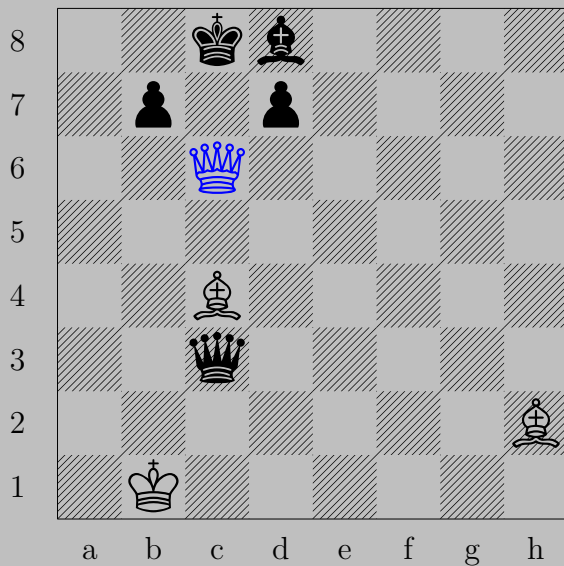
♗e8



♙×d6+, ♚×d6

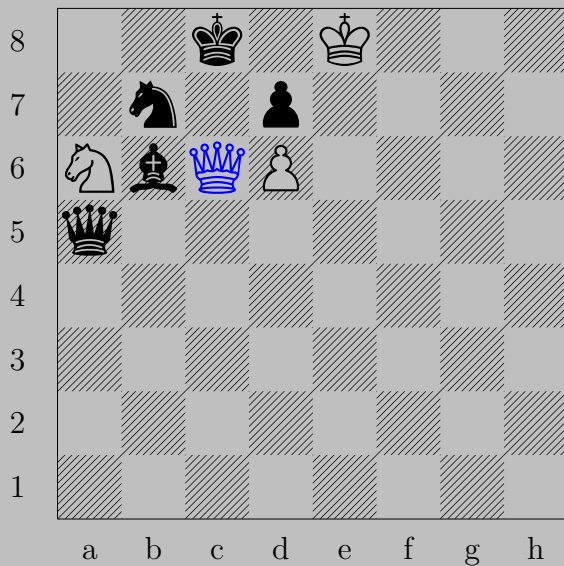
♜f4



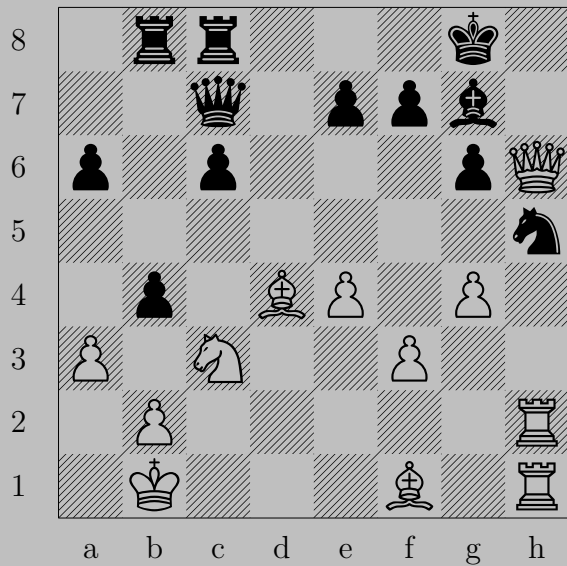


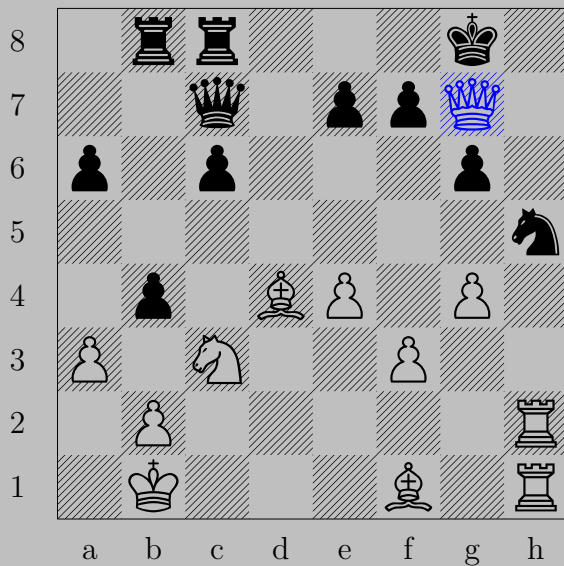
♔xc6+

If ♖(b7)xc6, ♙a6. If ♖(d7)xc6, ♙e6. If ♙c7, ♔xc7.

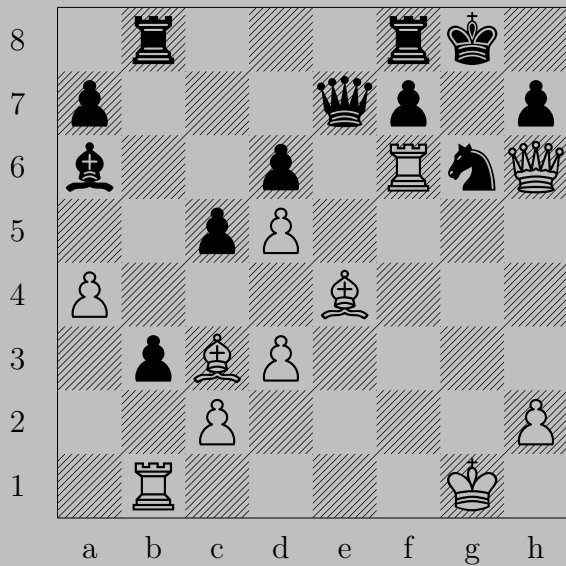


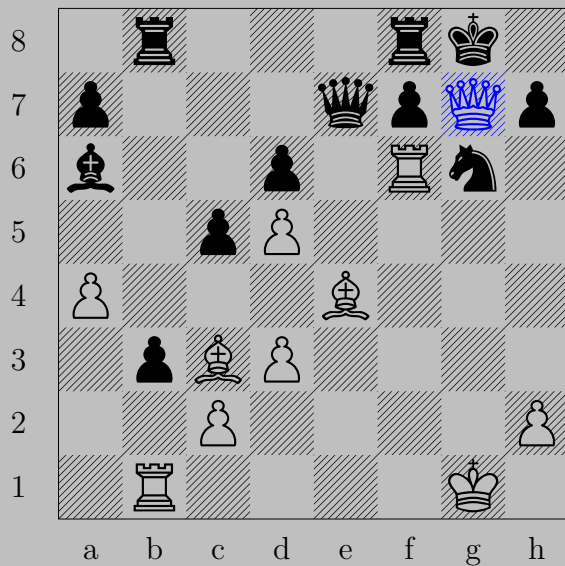
♔c6+, ♖xc6
♖d7



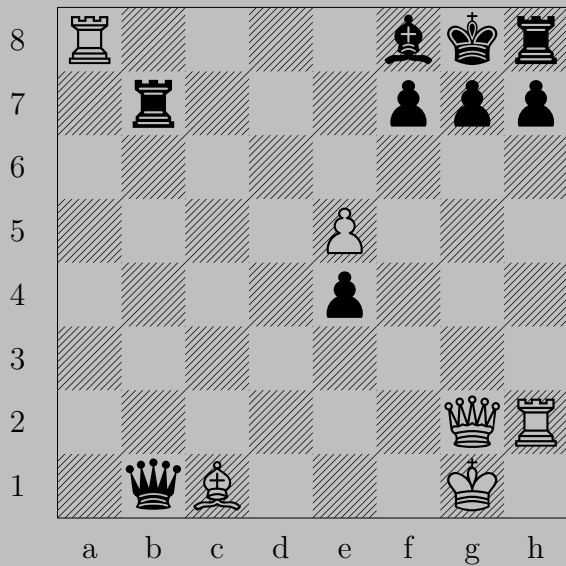


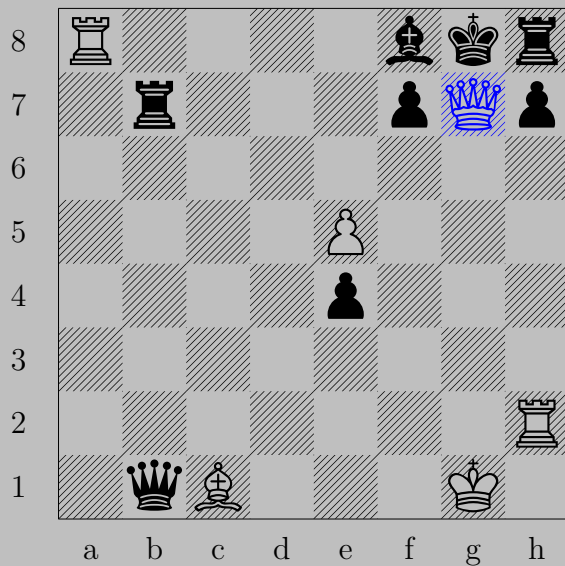
♙xg7+, ♞xg7
♖h8



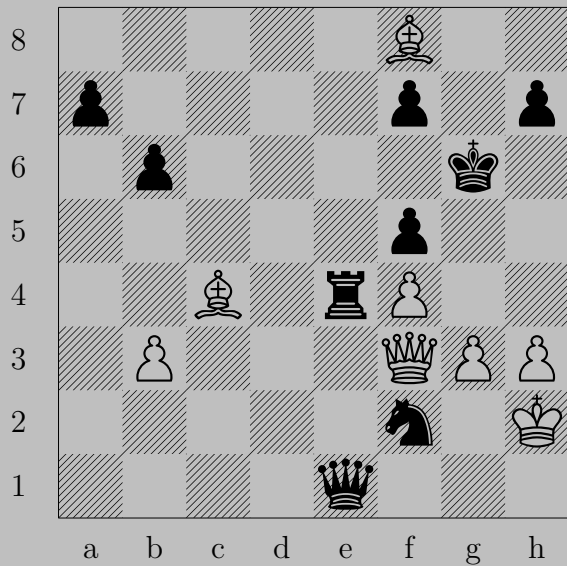


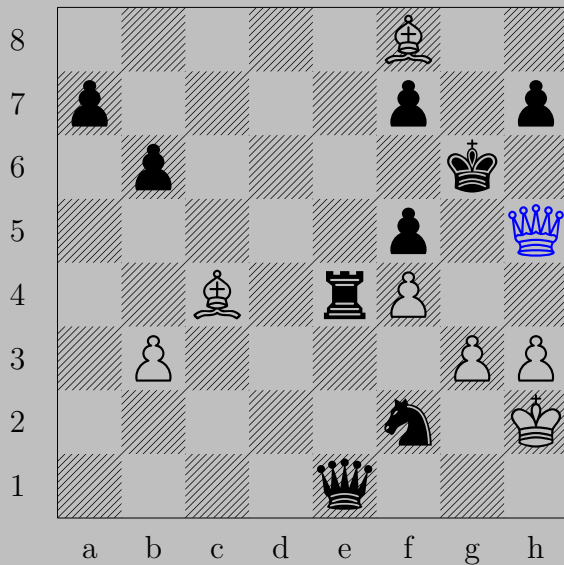
♙g7+, ♚xg7
 ♖xg6





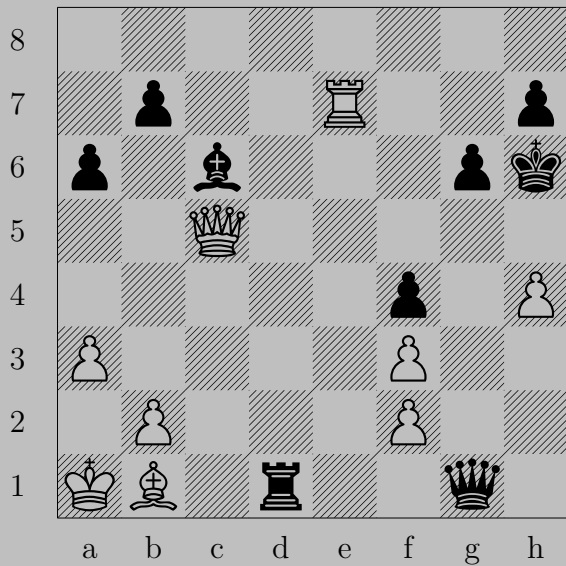
♙×g7+, ♔×g7
♖g2

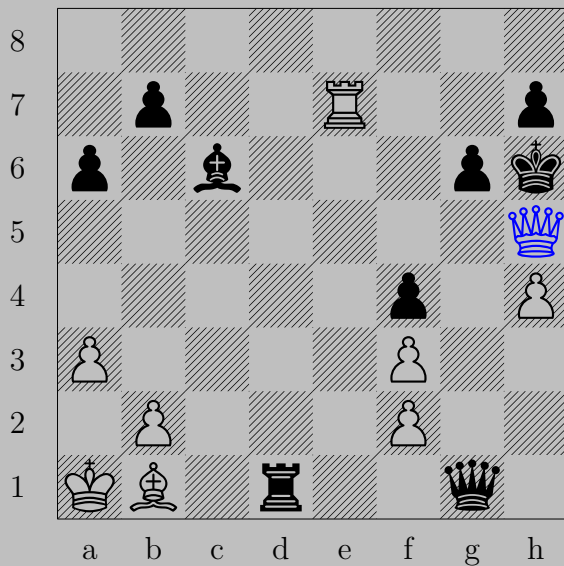




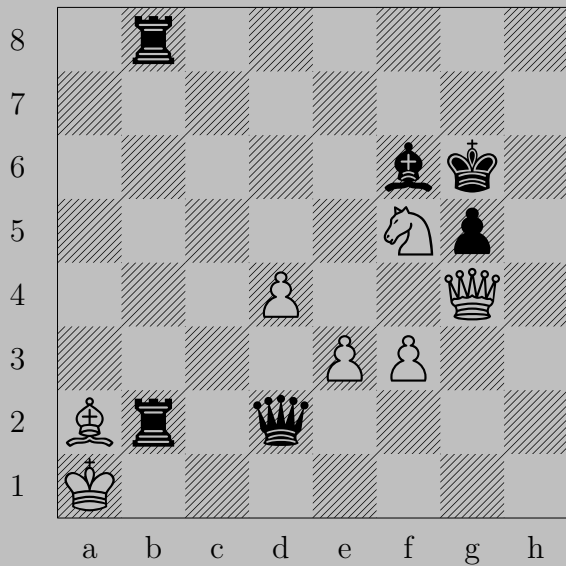
♙h5+

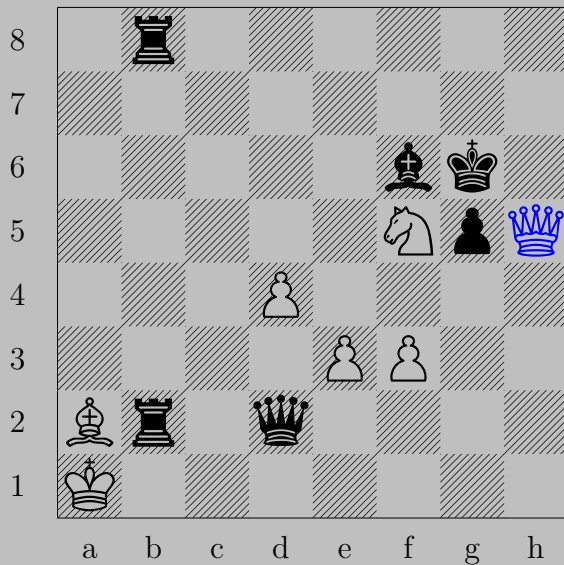
If ♖×h5, ♙×f7. If ♔f6, ♙×f7.





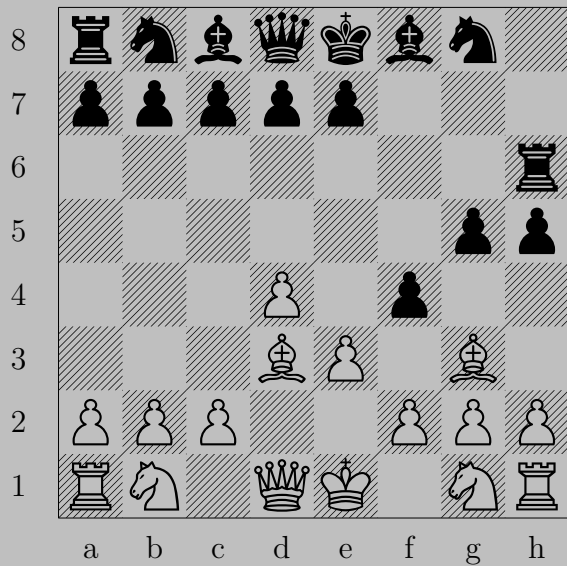
♙h5+, ♚xh5 or ♘xh5
♖xh7

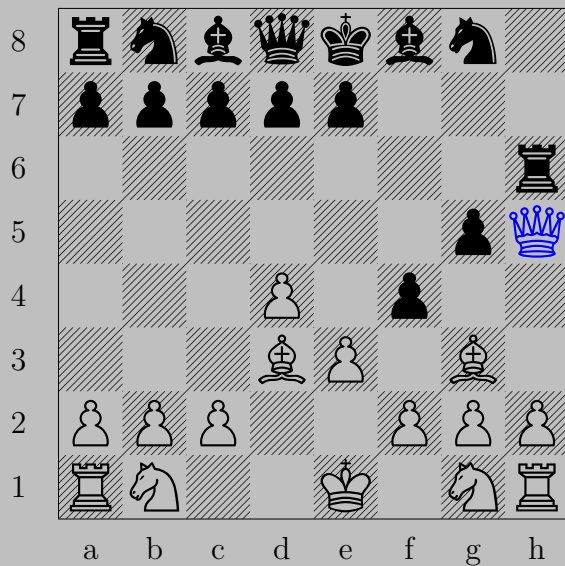




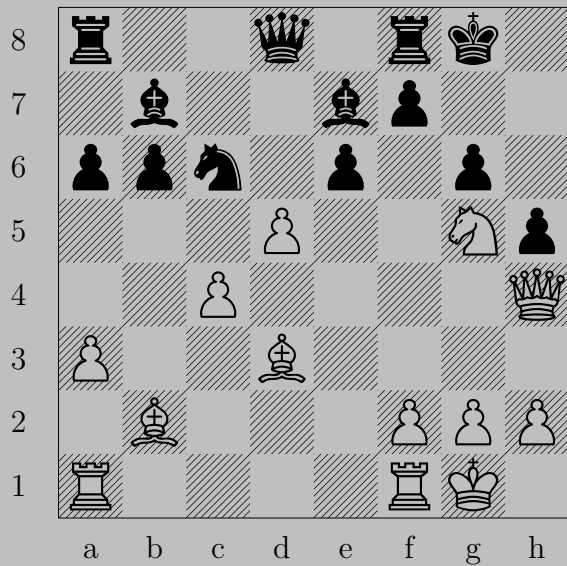
♔h5+

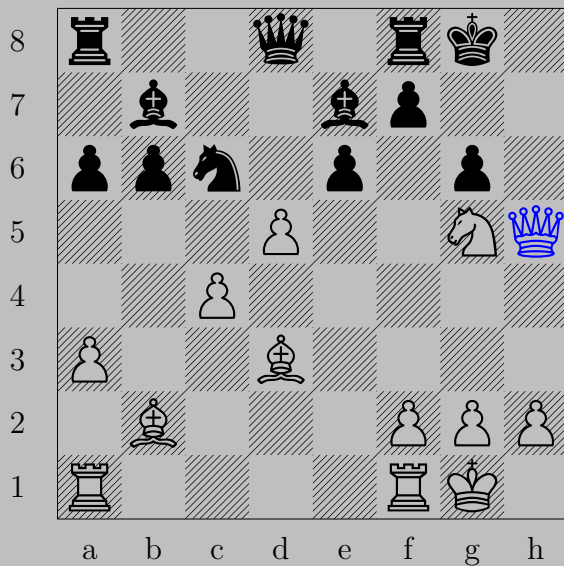
If ♖×h5, ♙f7. If ♖×f5, ♔h7.





♔×h5+, ♖×h5
 ♔g6

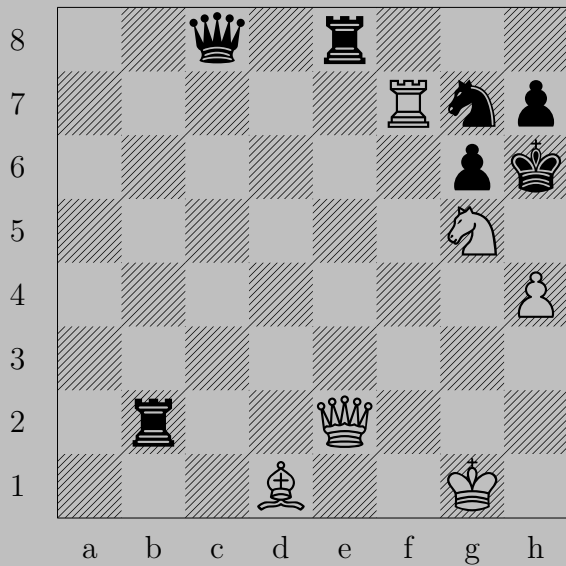




♙×h5

If ♖×h5, ♕h7. If ♕×g5, ♖h8.

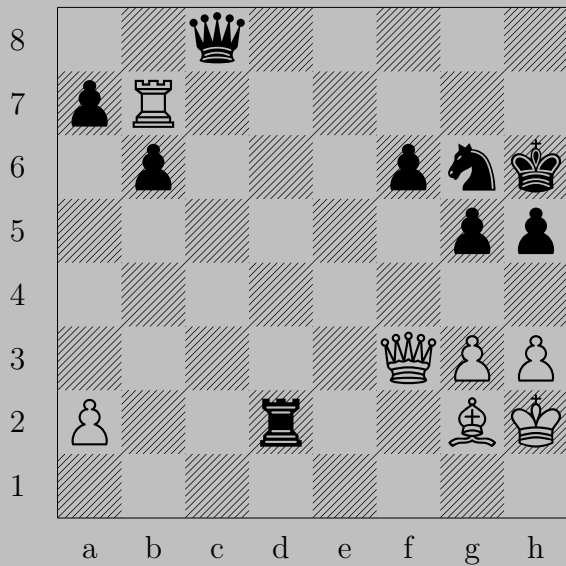
Otherwise, ♙h7.

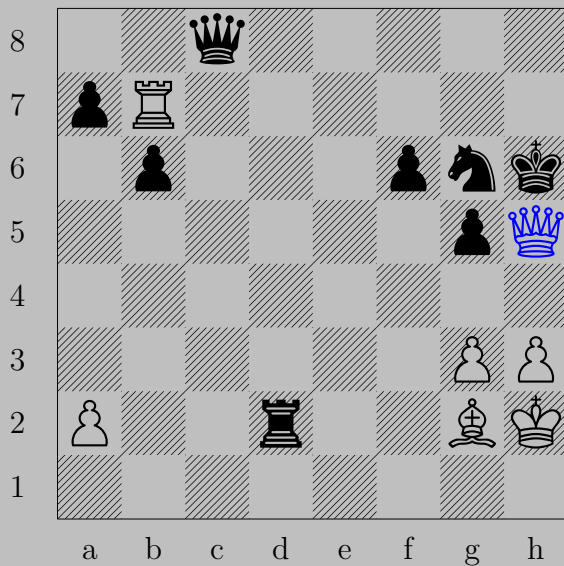




♙h5+

If ♖xh5, ♜g5. if ♘xh5, ♜xh7.





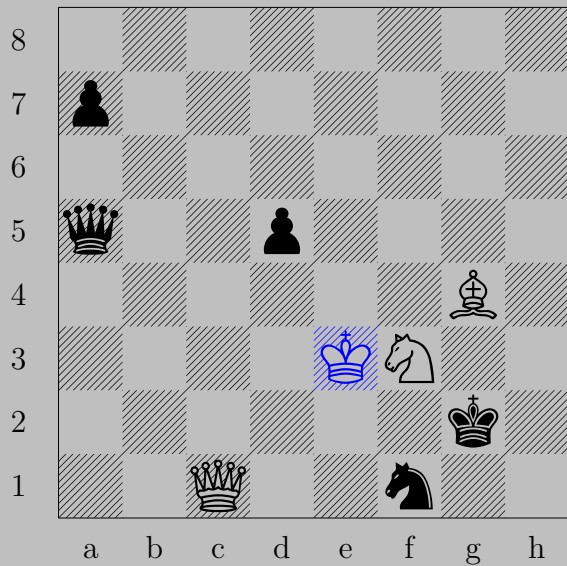
♙×h5+, ♚×h5
♖h7





$\text{♙} \times h5+, \text{♜} \times h5$

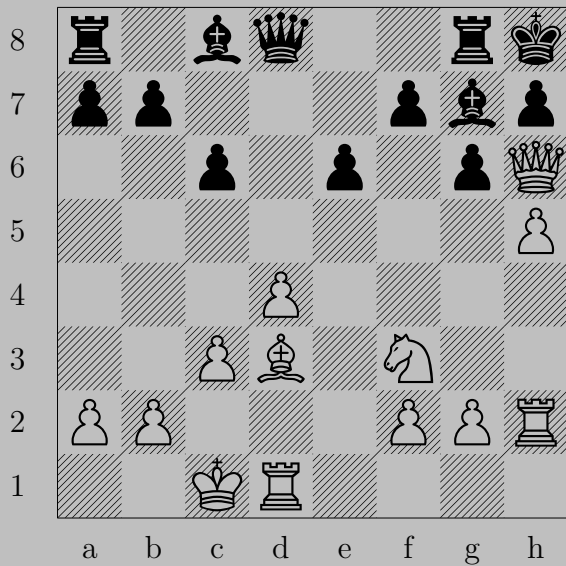
$\text{♖} \times h5$

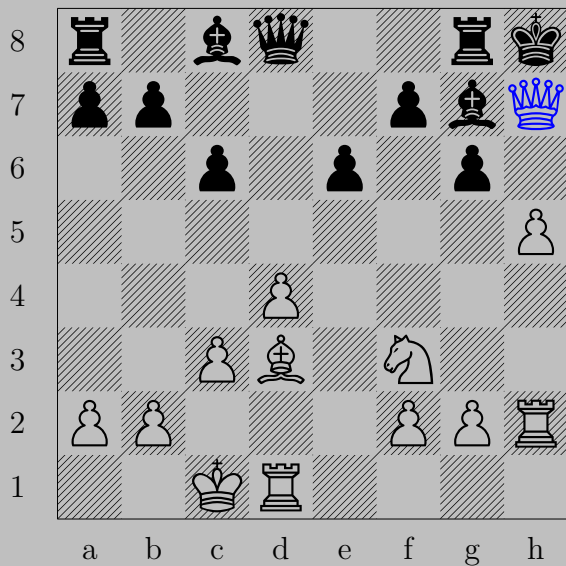




♙×f1+

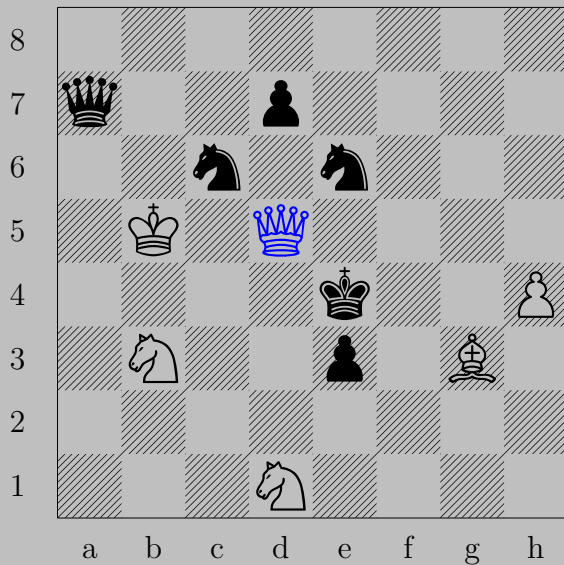
If ♔×f1, ♕h3. If ♔g3, ♙h3.



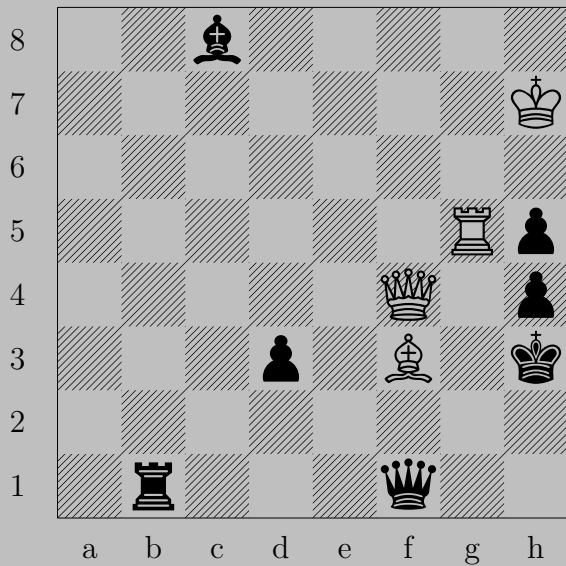


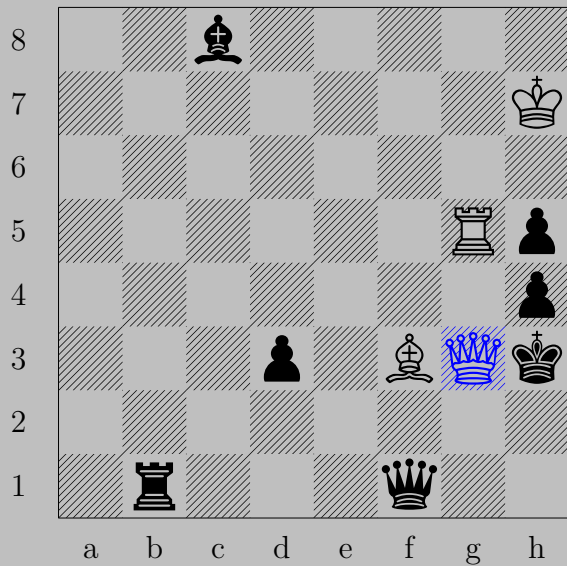
♔×h7+, ♕×h7
♖×g6





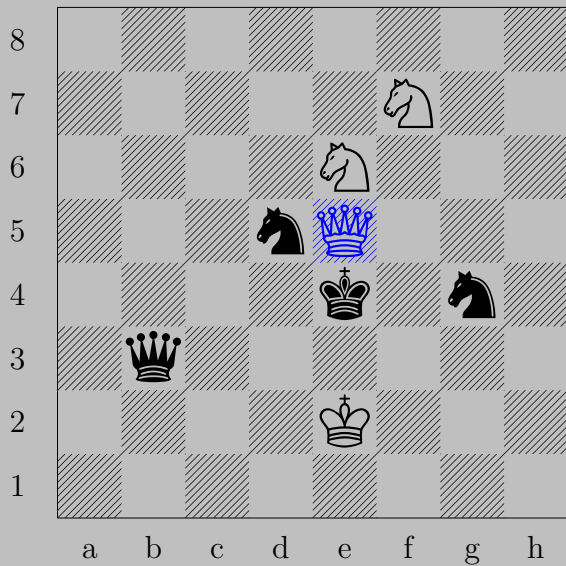
♛d5+, ♚x5
♞c3



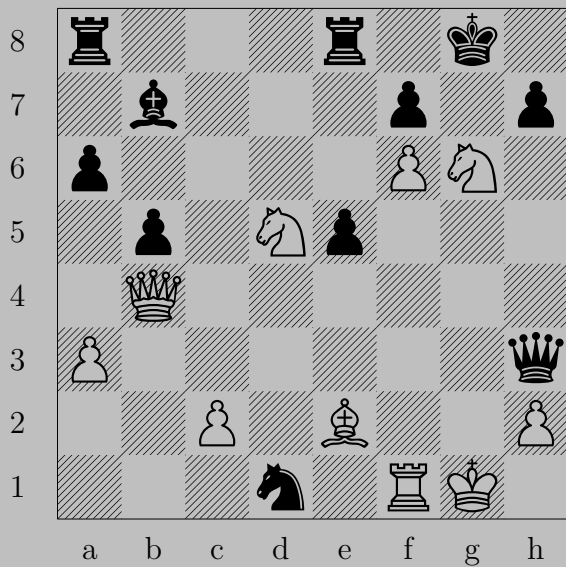


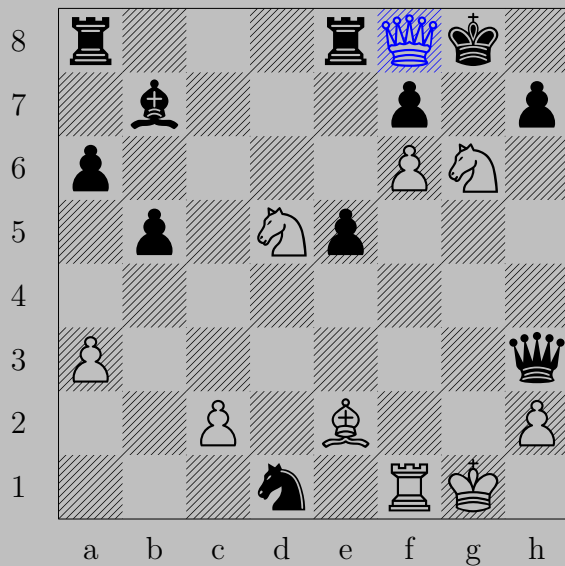
♔g3+, ♕×g3




♖×h5

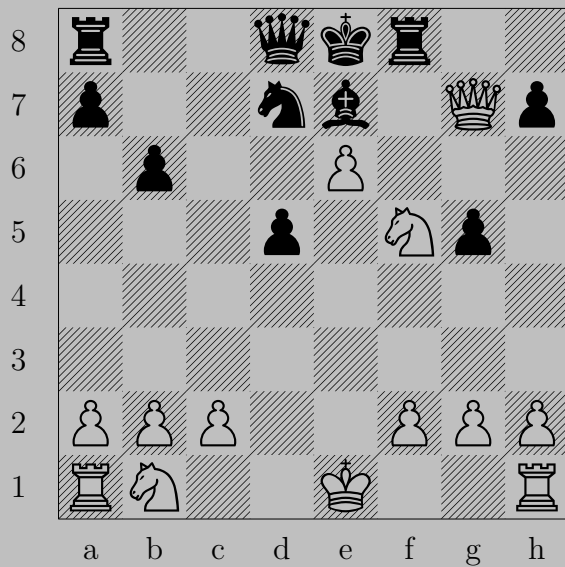


♔e5+, ♖x5
♘d6





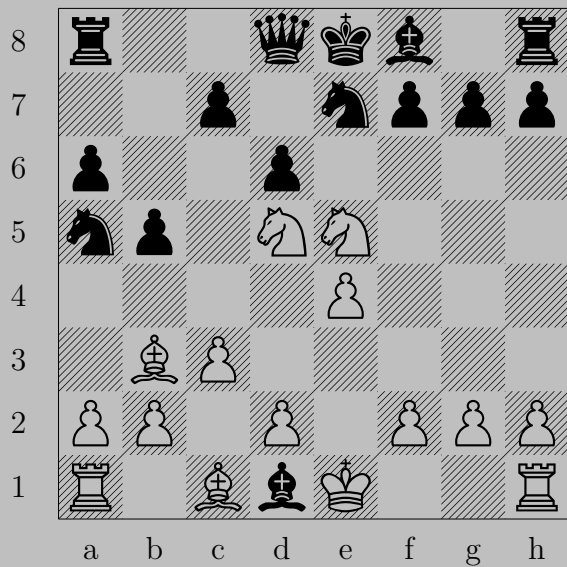
g8+, x f8
e7





♙g6+

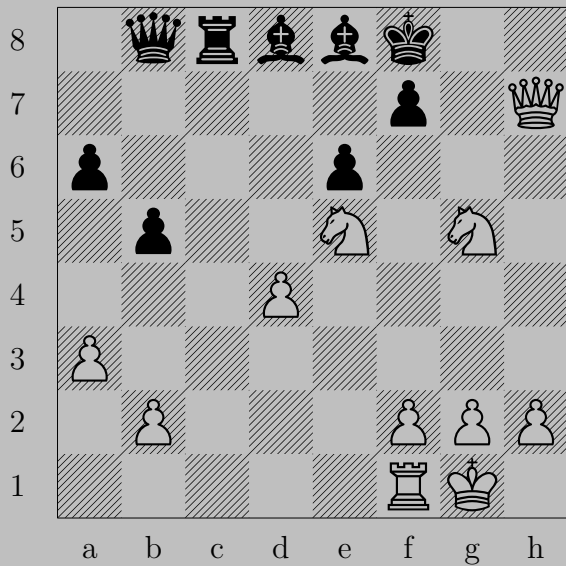
If ♟×g6, ♘g7. If ♖f7, ♙×f7.

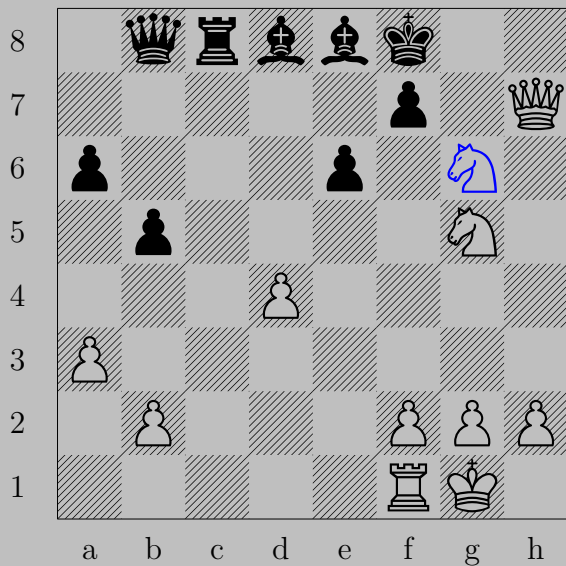




♞f6+ , ♙x6

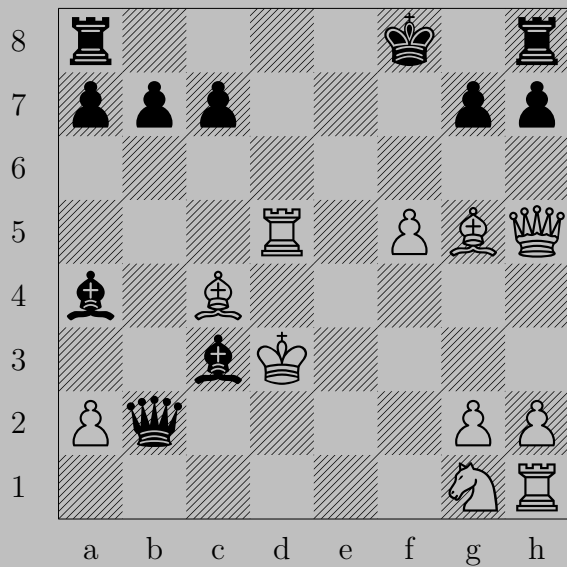
♚x7

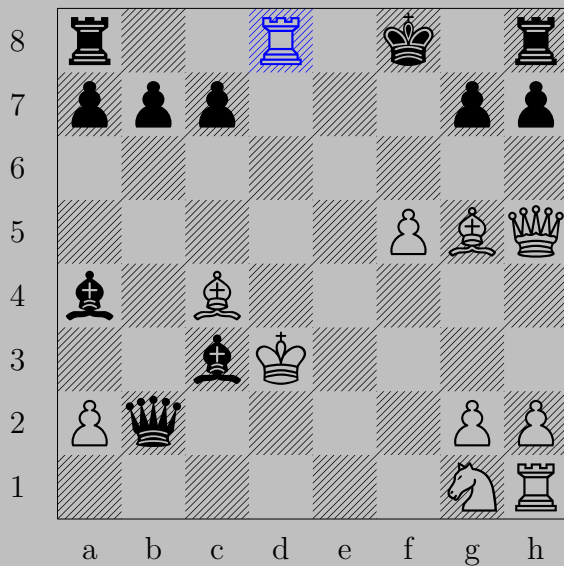




$\text{Ng6+}, \text{Pxg6}$

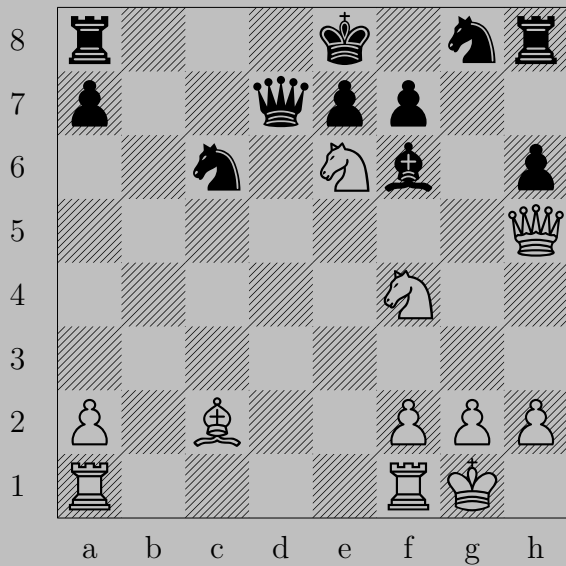
Nxe6





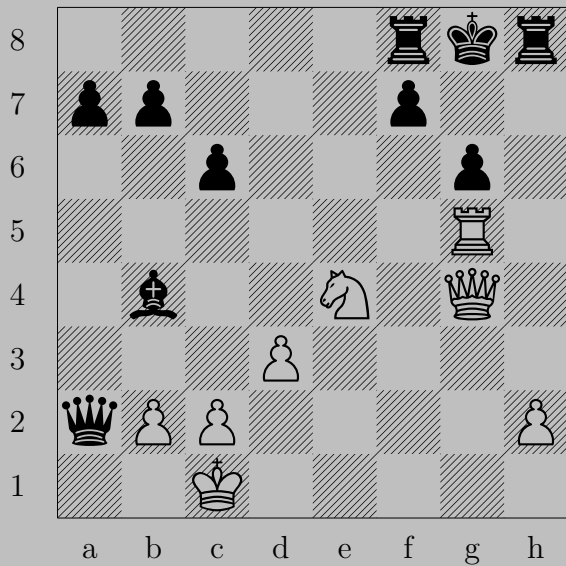
Rd8+

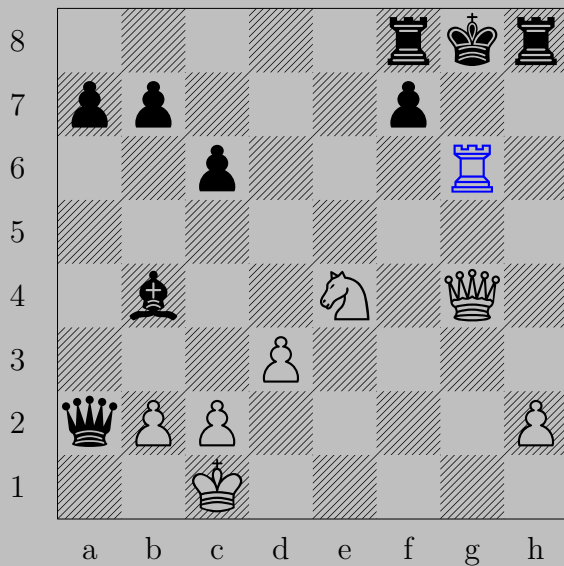
If Rxd8 , Qf7 . If Ke8 , Qxe8 .





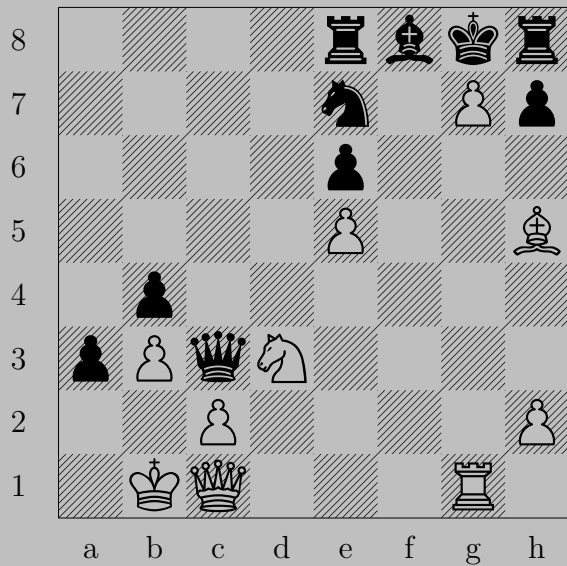
♔xf7+, ♔xf7
♘g6

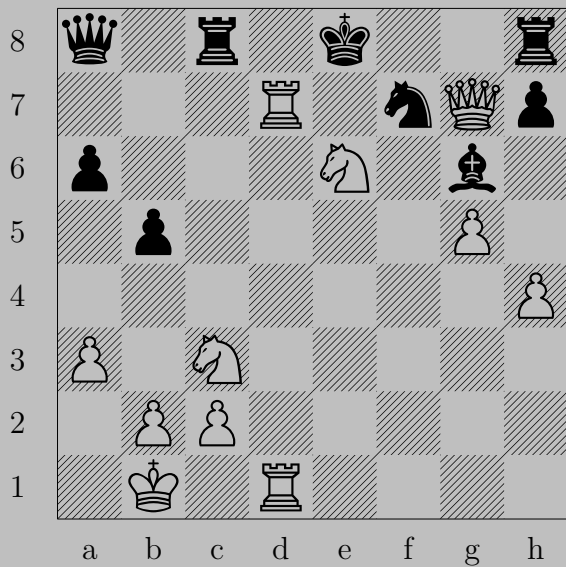


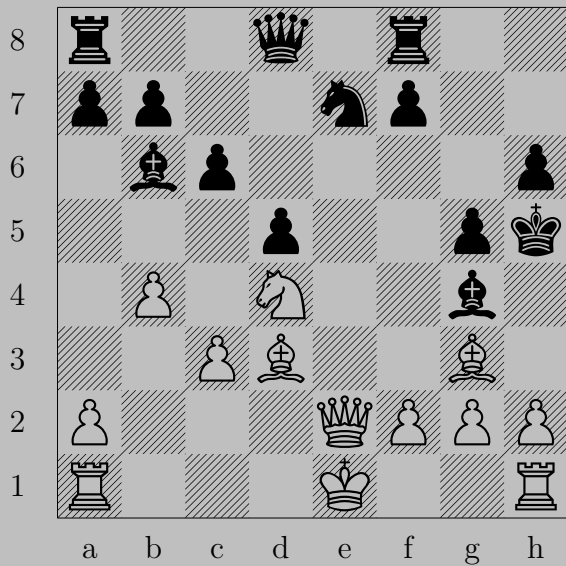


Rook×g6+

If Pawn×g6, King×g6. If Kingh7, Kingh5.












♙xg4+, ♚xg4
♜e2





f7+, x f7
x f7

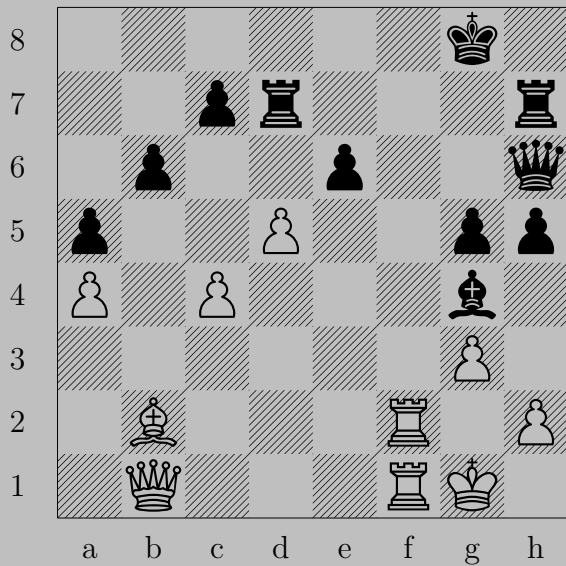




♙e6

If ♗×e6, ♘×e6.

Otherwise, ♙d7.



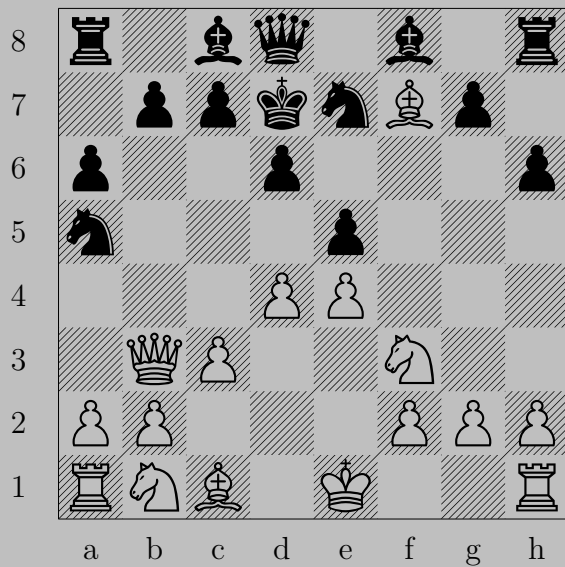


♔g6+, ♕xg6 or ♖g7 or ♔g7
 ♖f8








Ng5+ , Pxg5
 Pxg6

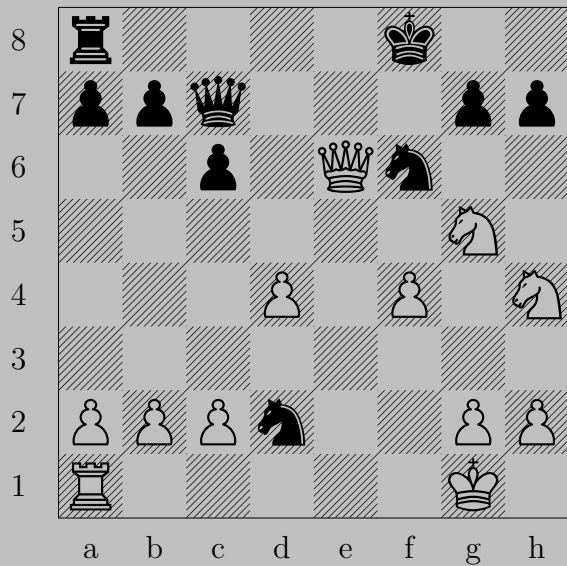


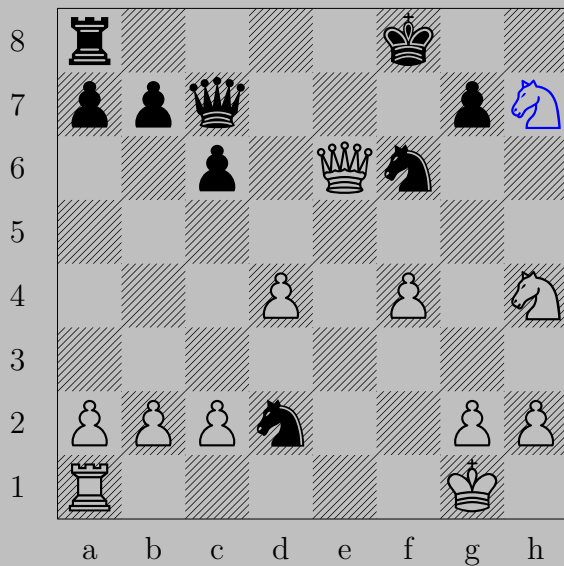


xg5+, xg5
g6



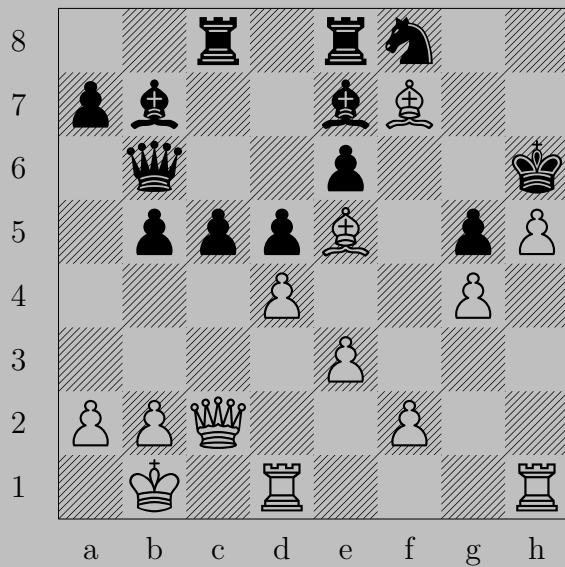
♔f7+, ♙×f7
♙h7



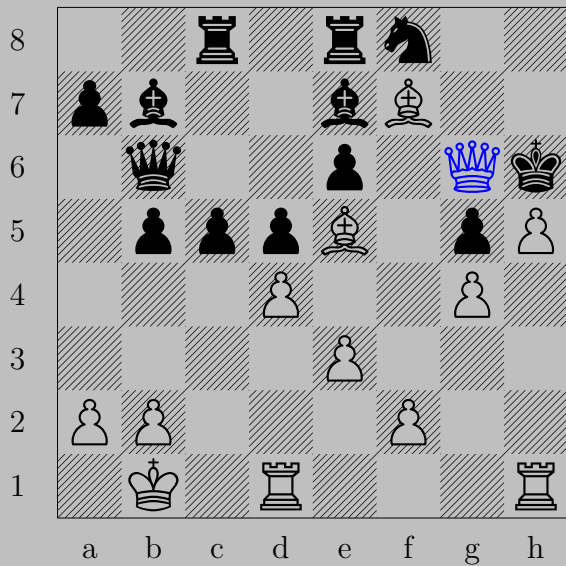


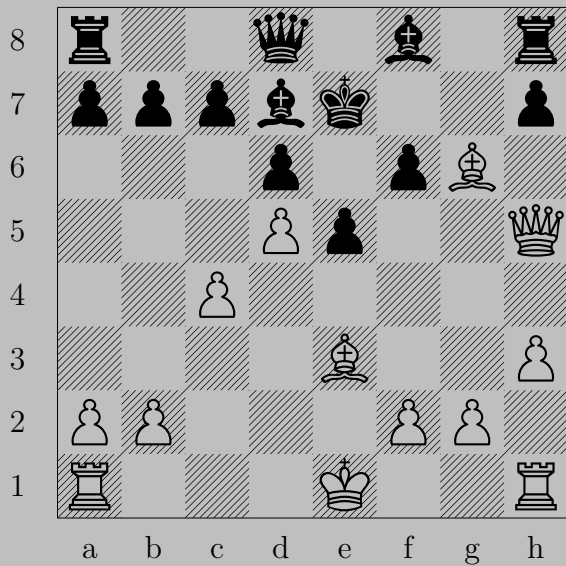
$\text{♞} \times \text{h7} +$, $\text{♞} \times \text{h7}$
 $\text{♞} \text{g6}$

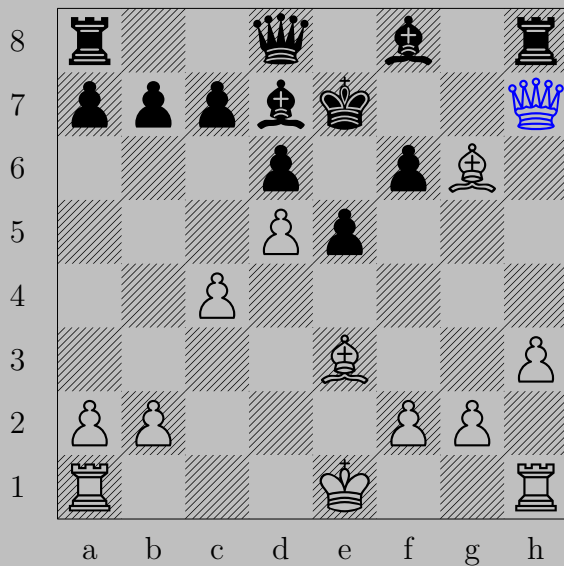
957



957

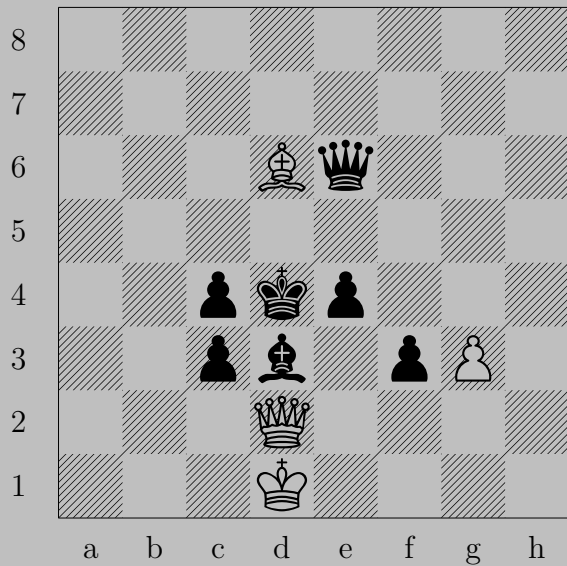


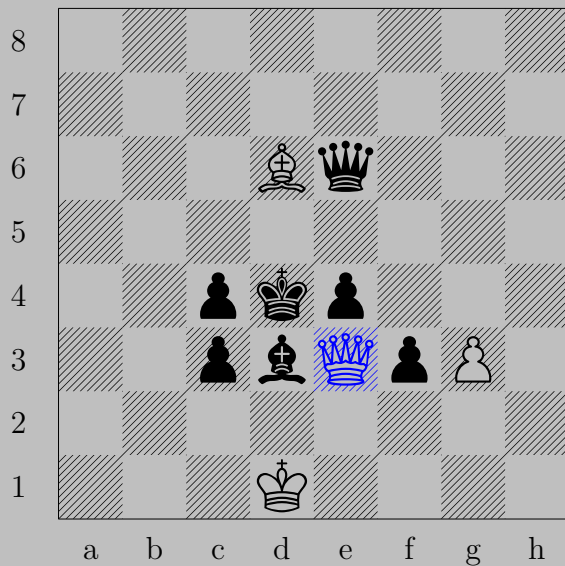




$\text{♔} \times \text{h}7+$

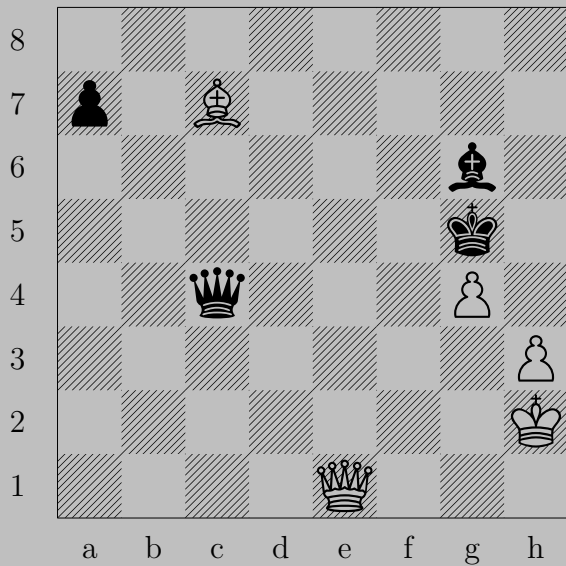
If $\text{♖} \times \text{h}7$, $\text{♜} \times \text{h}7$. If $\text{♘} \text{g}7$, $\text{♔} \times \text{g}7$.

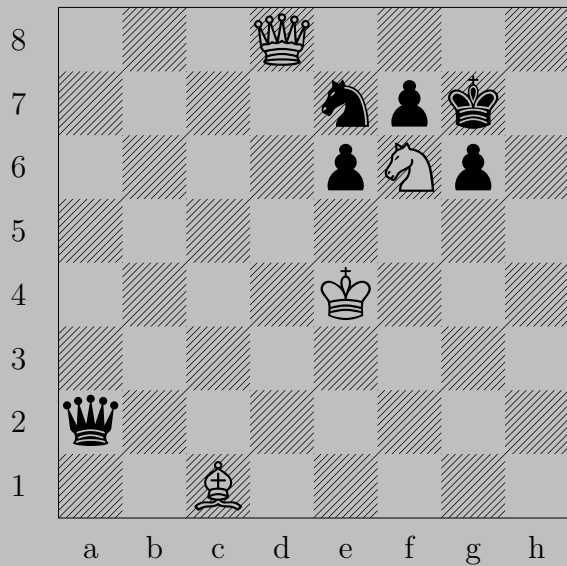


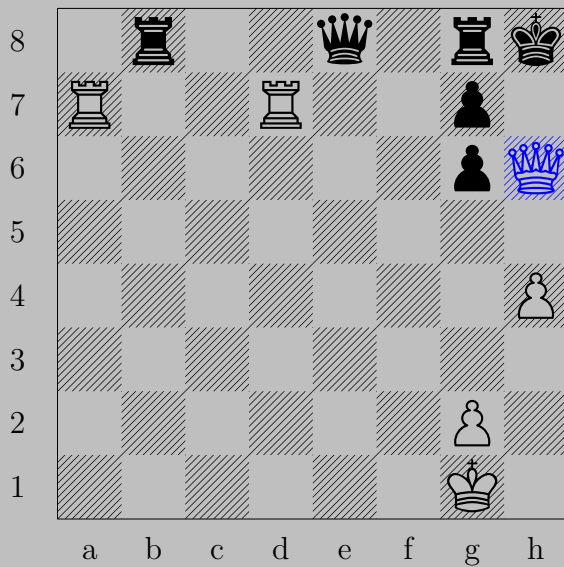


♔e3+

If ♙×e3, ♘c5. If ♙d5, ♔c5.







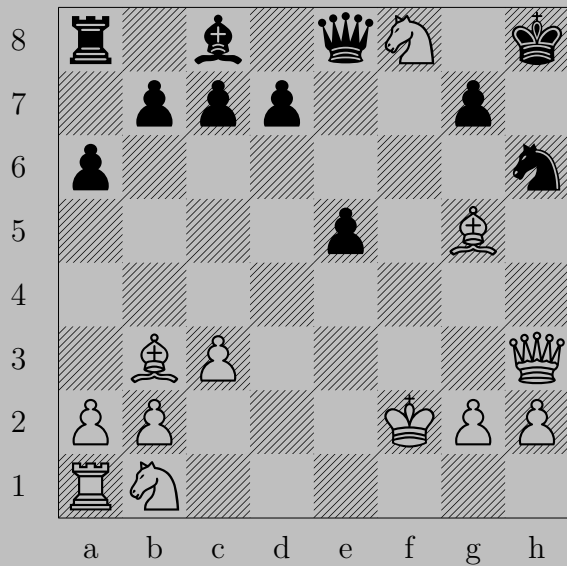
♙h6+, ♖xh6

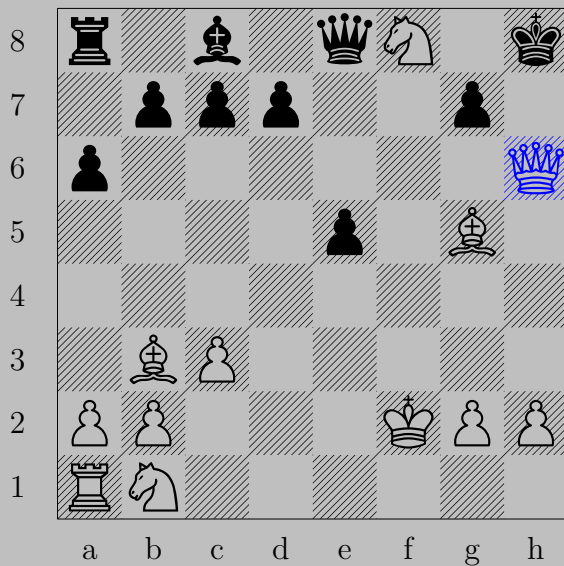
♖h7



♚×h6+

If ♘×h6, ♞f7. If ♔g8, ♚×g7.





♔×h6+, ♕×h6

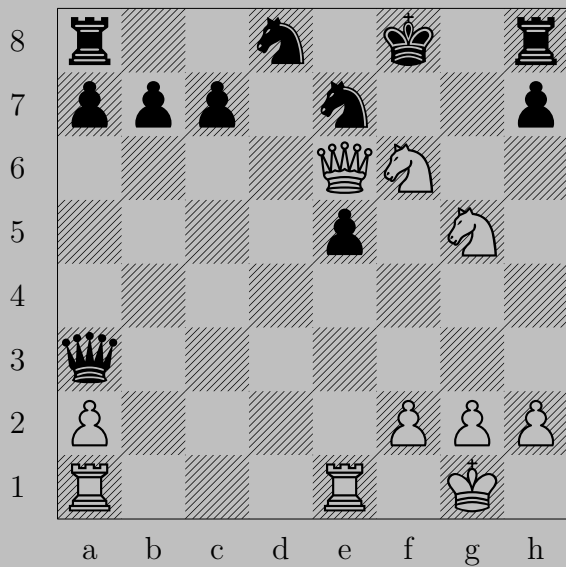
♗f6





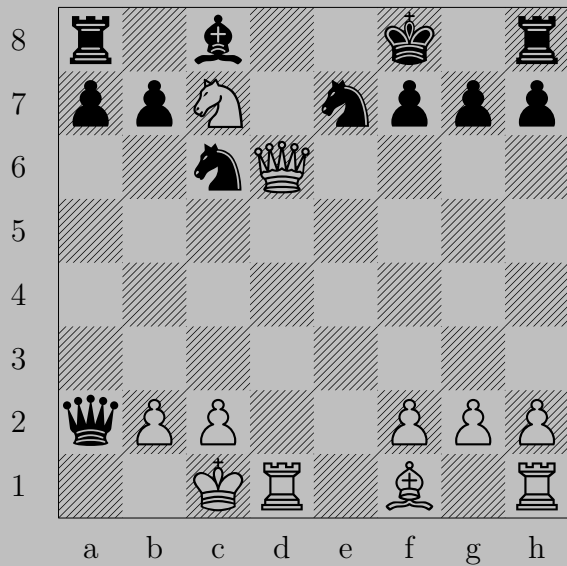
♔b8+

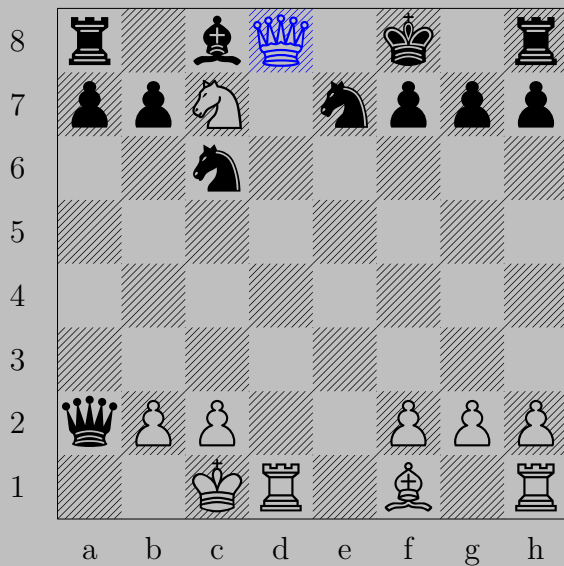
If ♕×b8, ♞c6. If ♕a6, ♜d3.



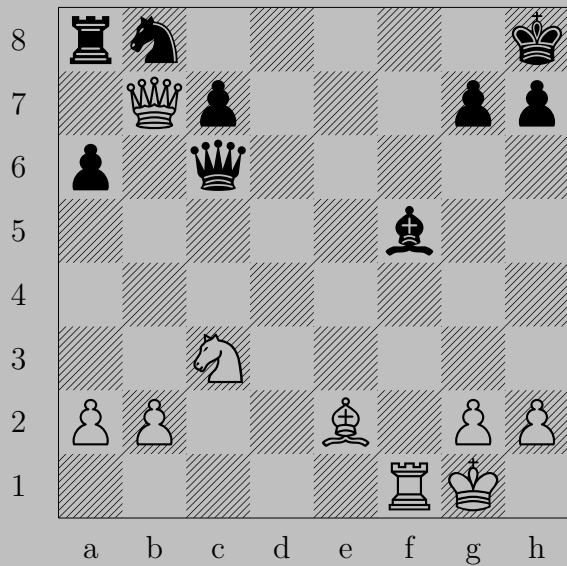


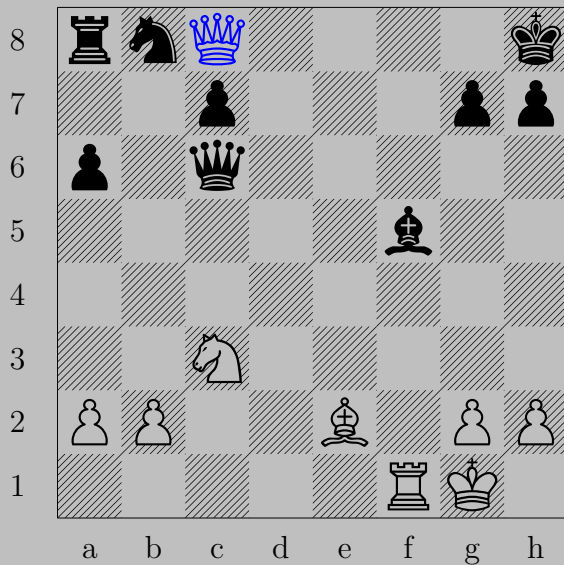
♔f7+, ♘xg7
 ♘e6





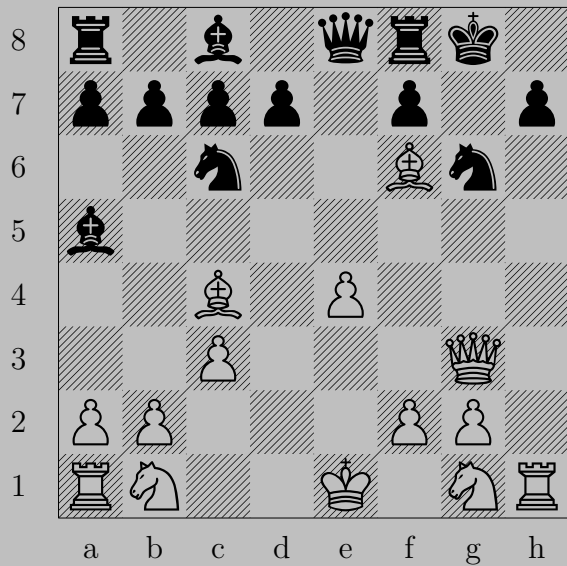
♙d8+, ♘xd8
♖xd8

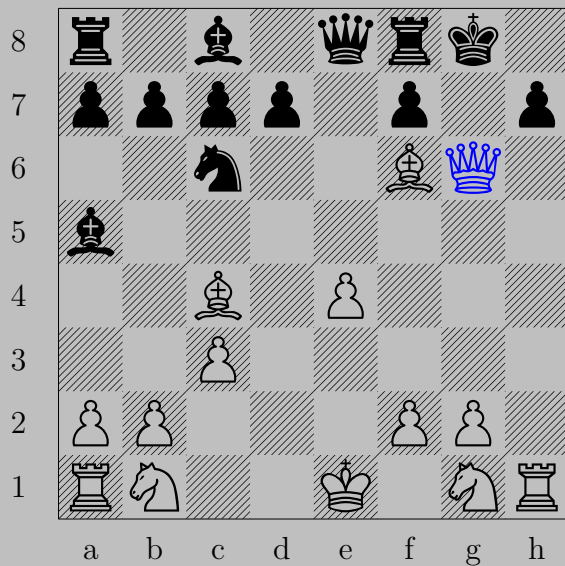




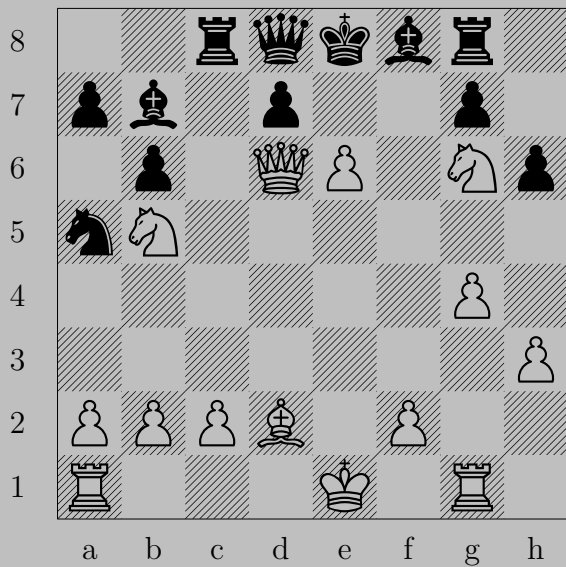
♙c8+

If ♘xc8, ♖f8. If ♚e8, ♙xe8.





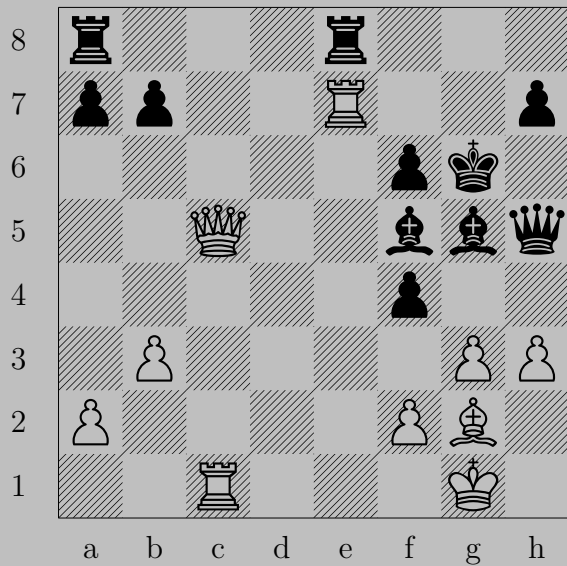
♔×g6+, ♕×g6
♖h8

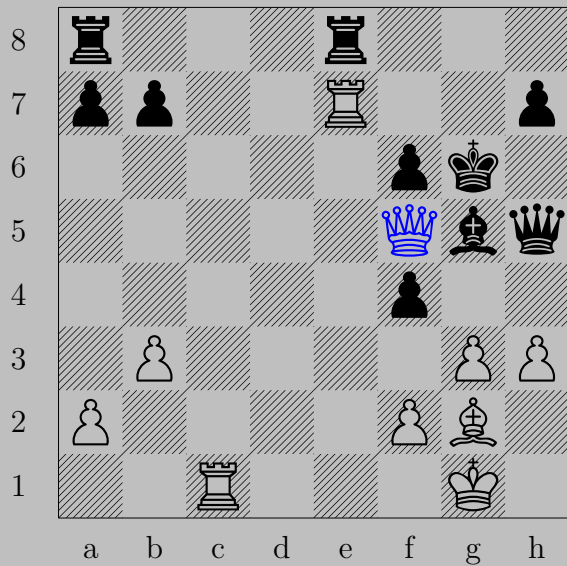




♔×f8+, ♖×f8

♞d6

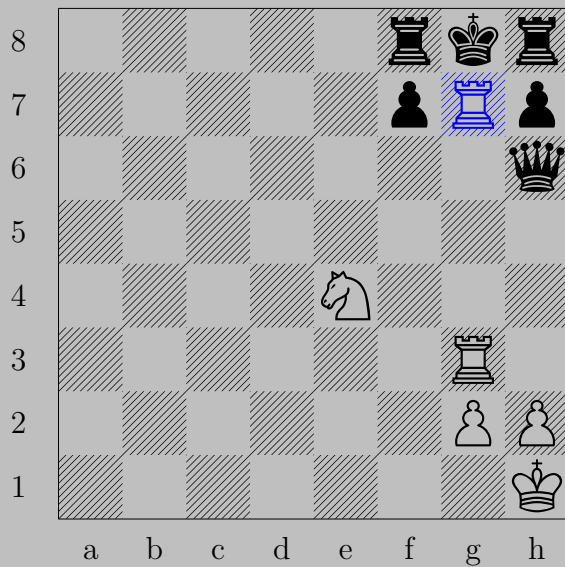




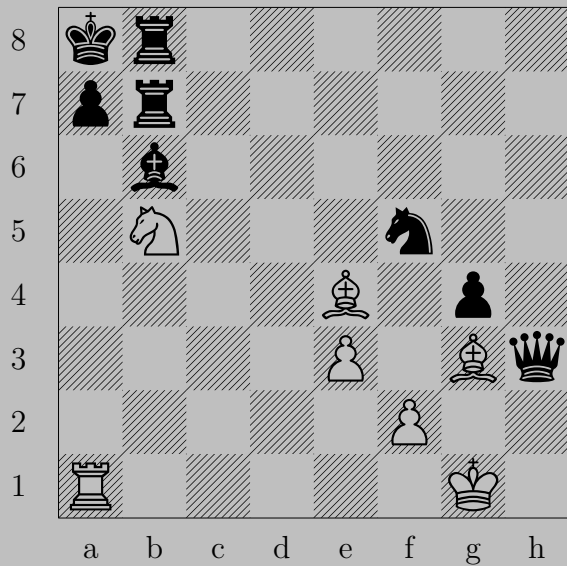


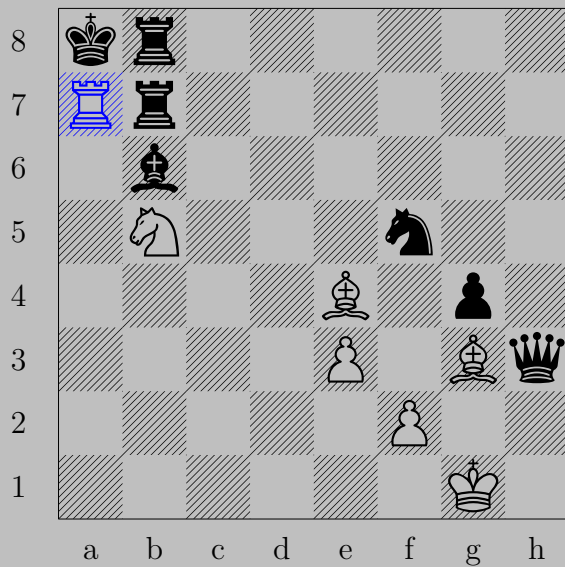


g6+, xg6
 h3



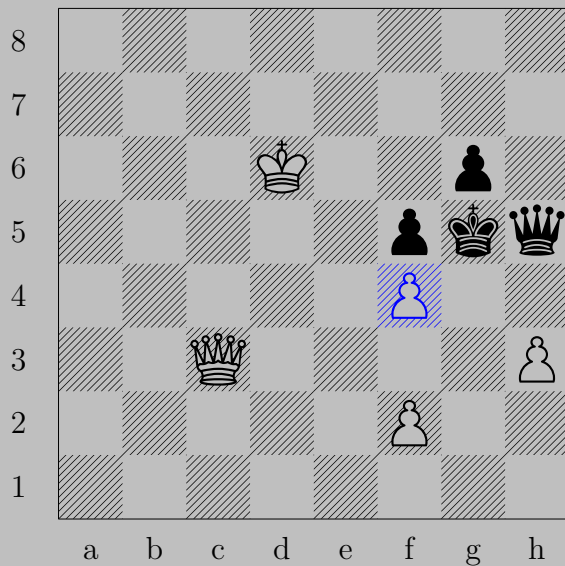
♖xg7+, ♔xg7
 ♞f6





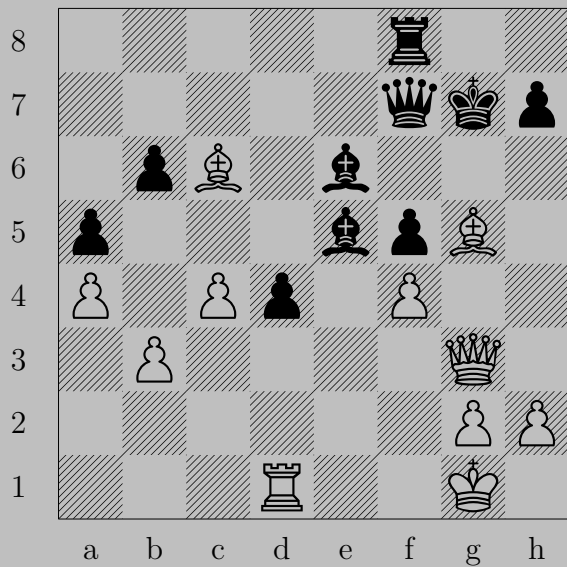
$\text{Rxa7+}, \text{Kxa7}$

Nc7



♔f4+

If ♚xf4, ♛e3. If ♚h4, ♛g3. If ♚h6, ♛h8.

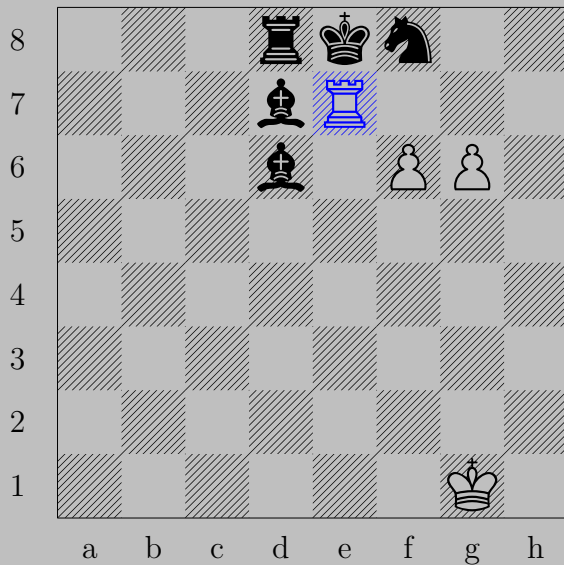




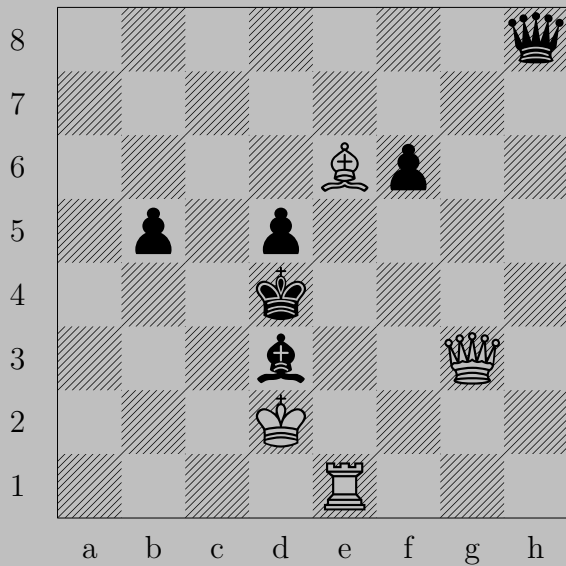
♘f6+, ♔×f6 or ♔h6

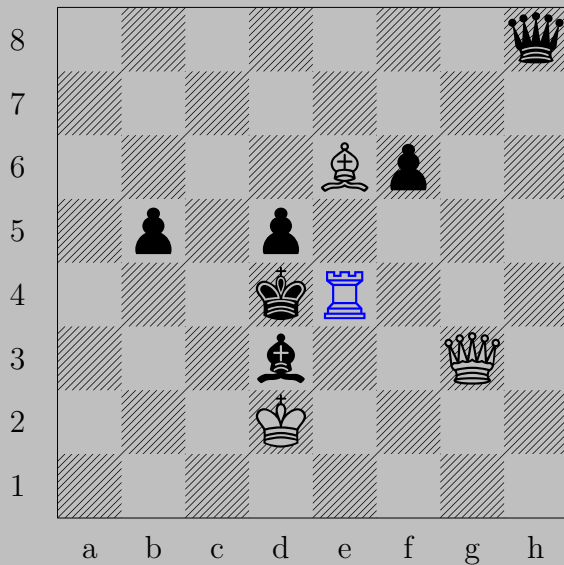
♚g5

977



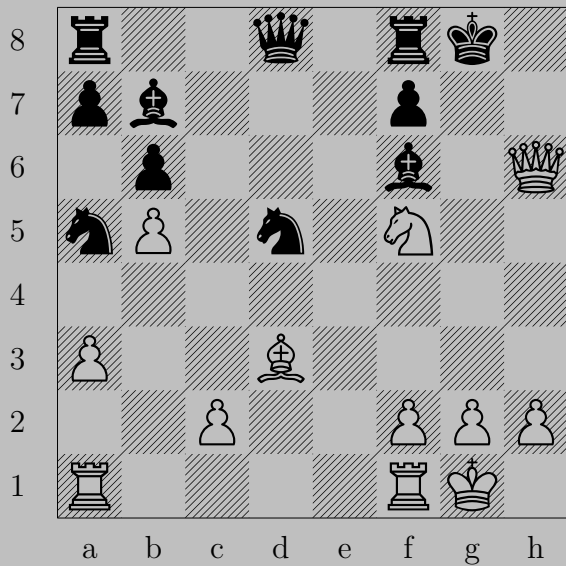
$\text{R}e7+, \text{K}xe7$
 $\text{P}f7$

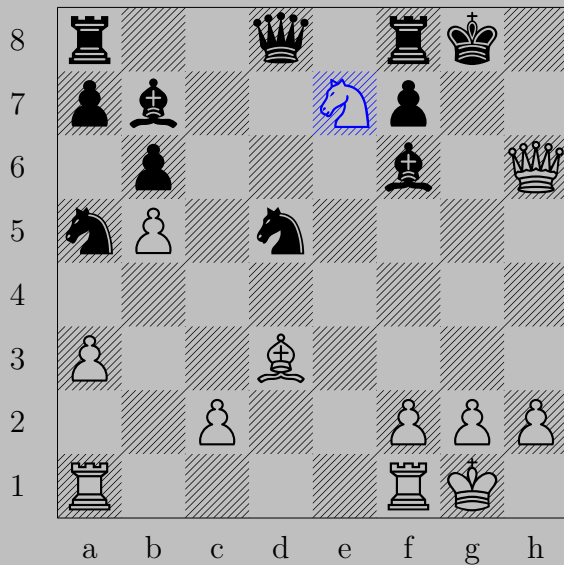




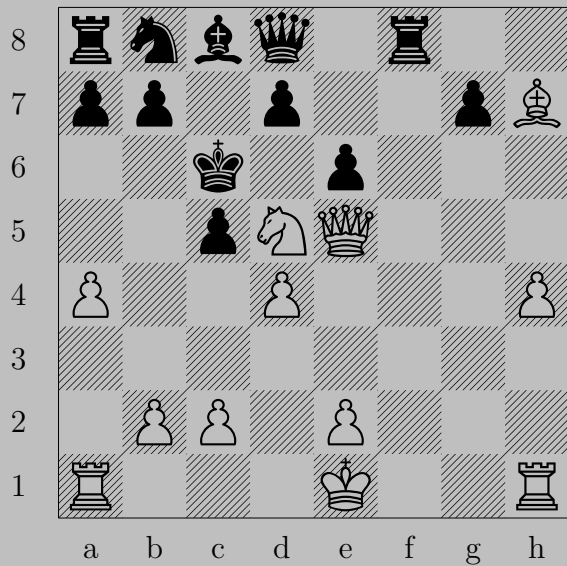
$\text{R}e4+$

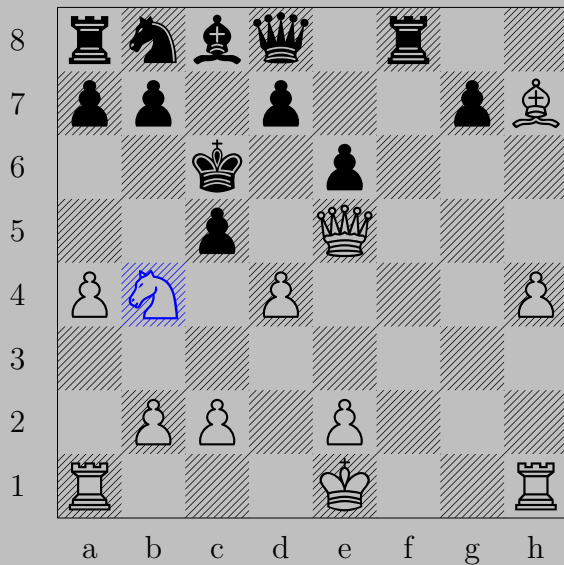
If $\text{P}xe4$ or $\text{Q}xe4$, $\text{Q}e3$. If $\text{N}xe4$, $\text{Q}c3$. If $\text{K}c5$, $\text{Q}c7$.





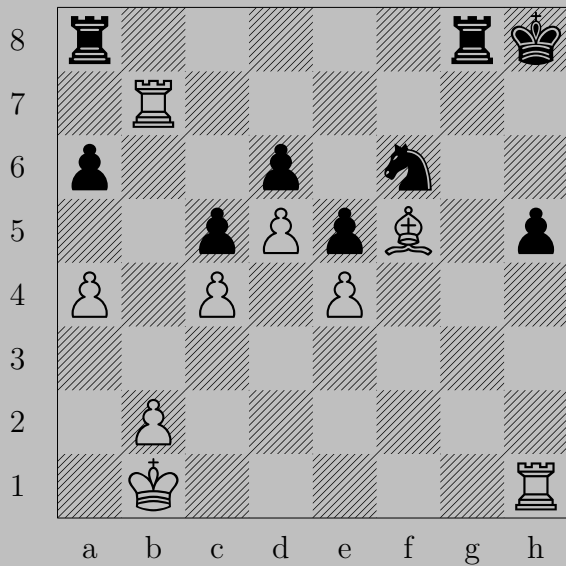
♞e7+ , ♞xe7 or ♝xe7 or ♚xe7
 ♚h7

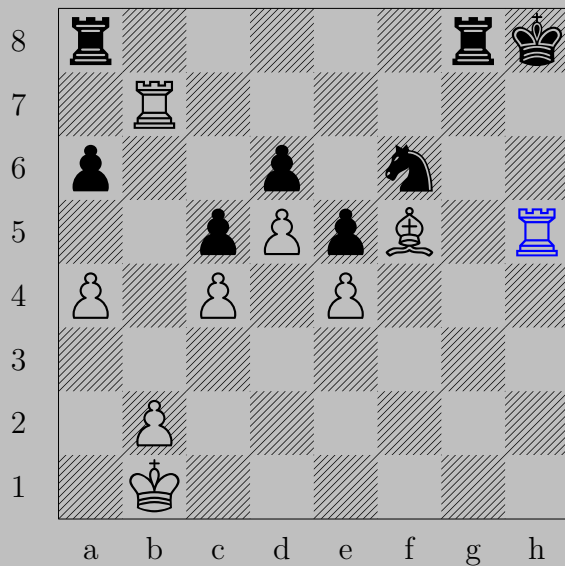




$\text{N}b4+$

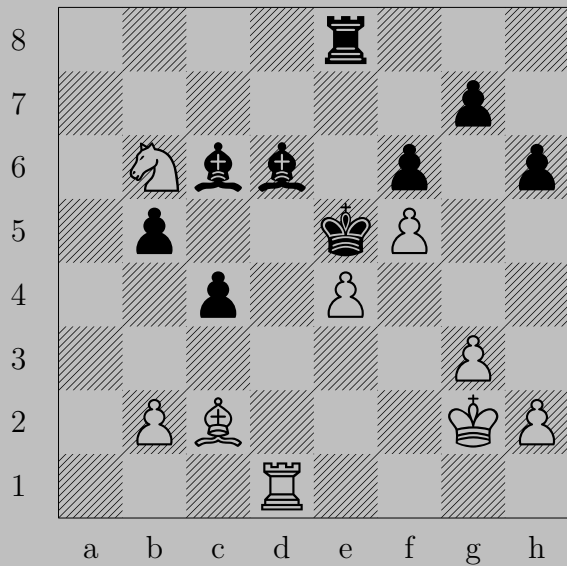
If $\text{P} \times b4$, $\text{Q}c5$. If $\text{K}b6$, $\text{Q} \times c5$.

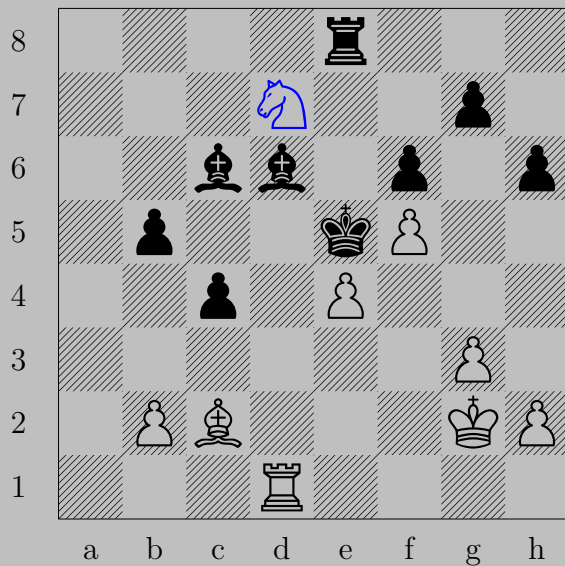




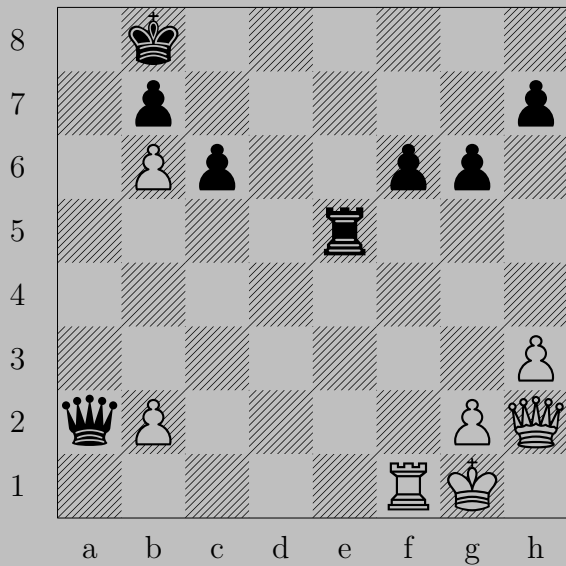
$\text{R} \times \text{h}5+$

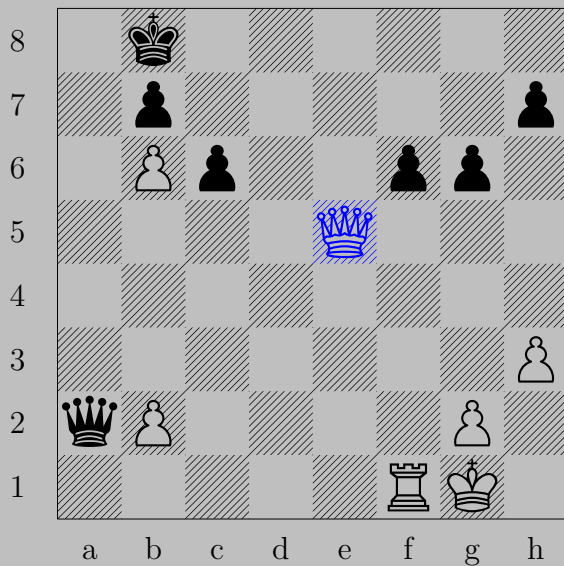
If $\text{Q} \times \text{h}5$, $\text{R} \text{h}7$. If $\text{Q} \text{h}7$, $\text{R} \times \text{h}7$.





♞d7+ , ♜x d7
 ♖d5





♙×e5

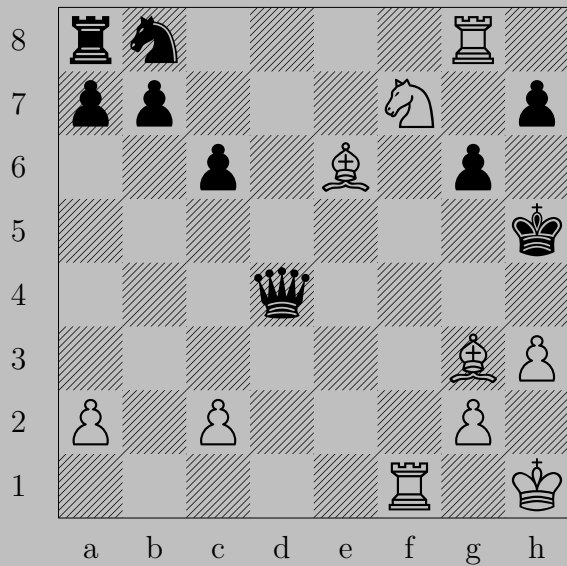
If ♖×e5, ♖f8. If ♔c8, ♙c7. If ♔a8, ♙e8.



♚f6

If ♚xf6, ♖xe8.

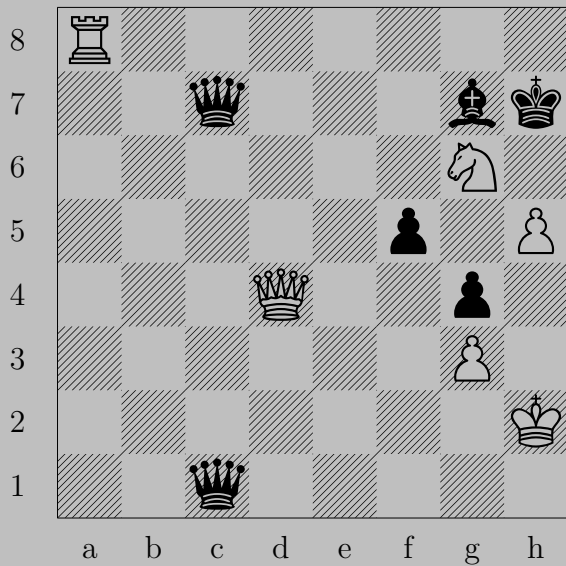
Otherwise, ♚g7.

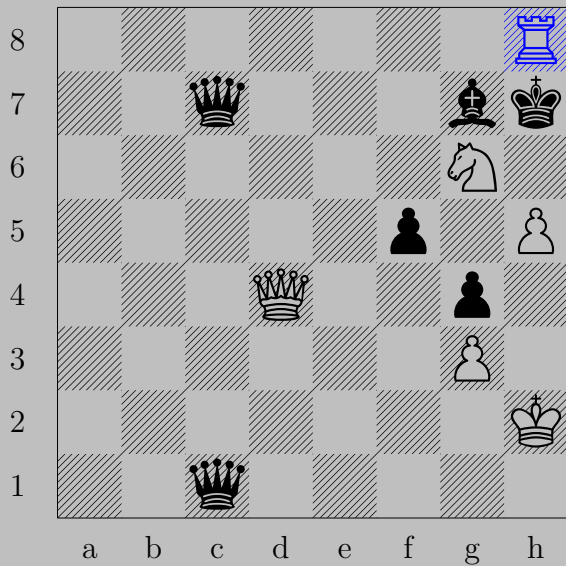






♖f5+, ♟×f5

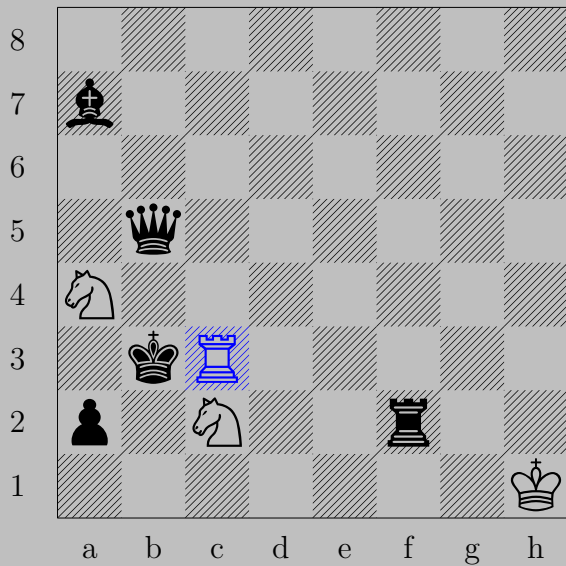
♖g5



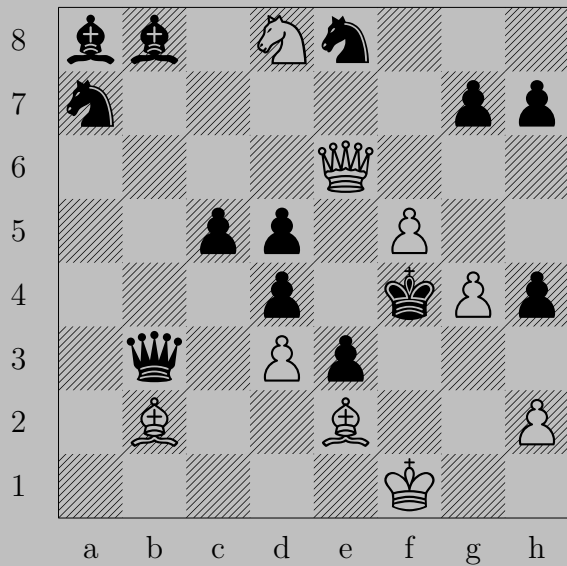


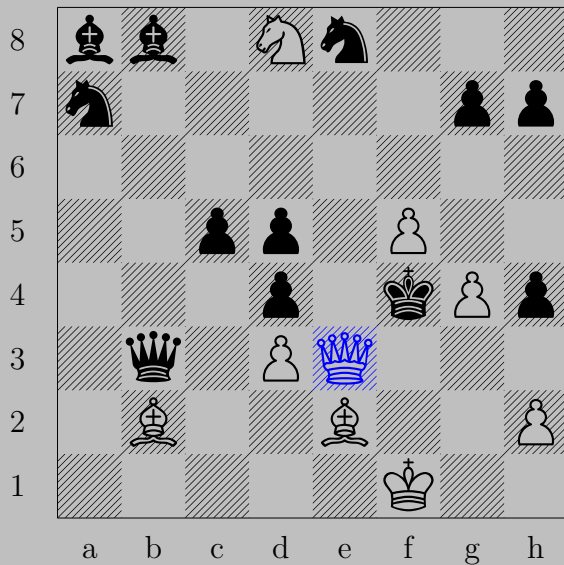
h9+, xh8

xh8



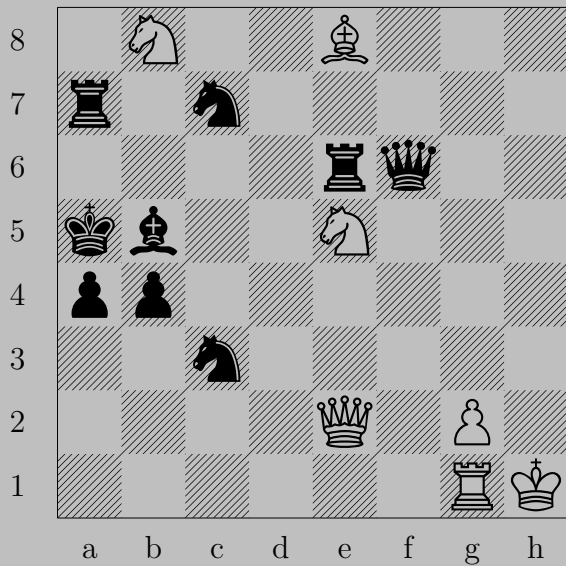
♖c3+, ♔xa4
♜a3








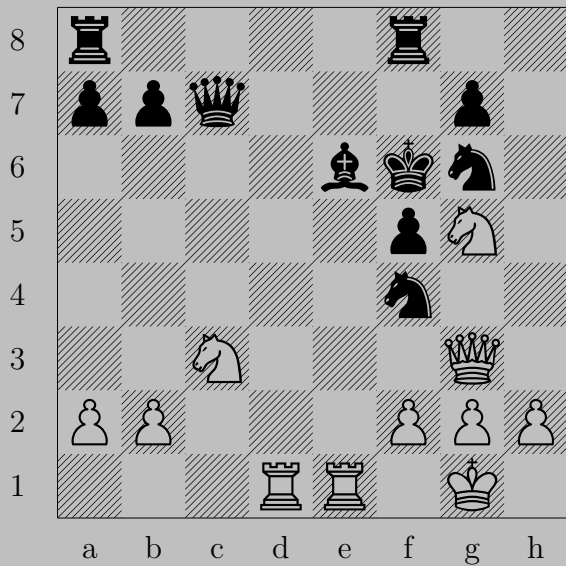
♔xe3+

If ♖xe3, ♜e6. If ♔xe3, ♚c1.



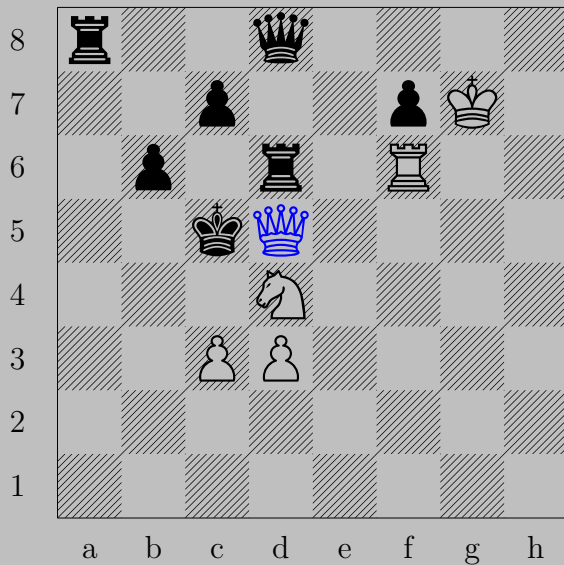


x**b5+**, x**b5**
**c4**



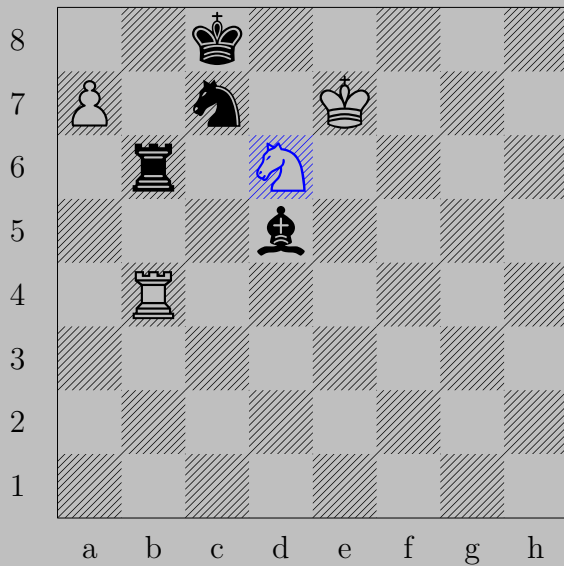


$\text{R}\times\text{e6+}$, $\text{N}\times\text{e6}$
 $\text{N}\text{d5}$



♙×d5+

If ♖×d5, ♜c6. If ♚×d5, ♜f5.

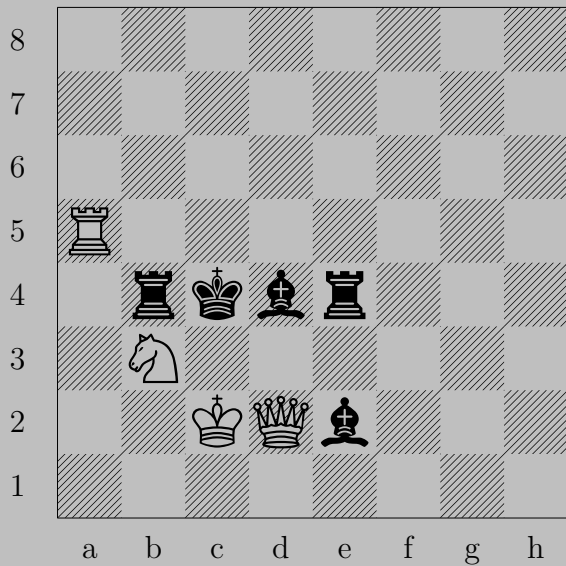


♞d6+ , ♖xe6
 ♖b8



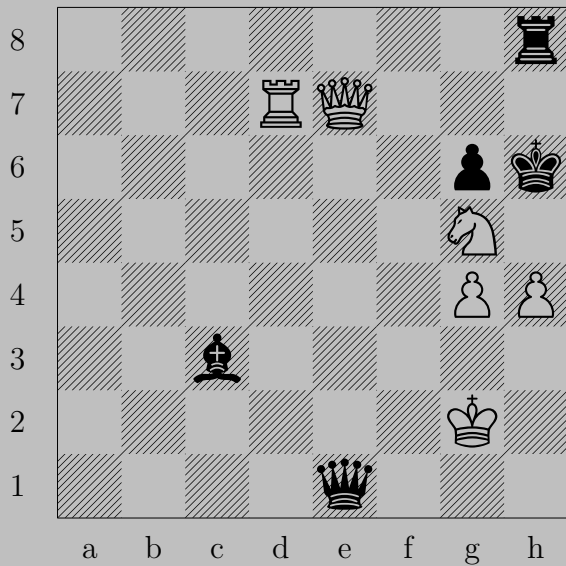


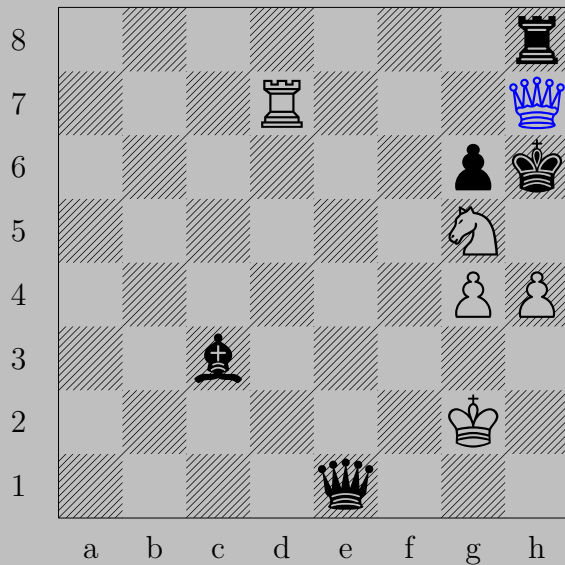
♔e6+, ♕xe6 or ♖xe6
 ♗h6



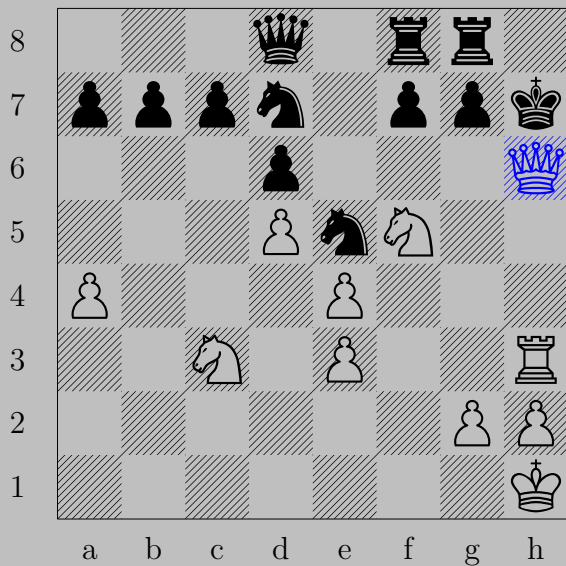


♙×d4+, ♜×d4
♜c5



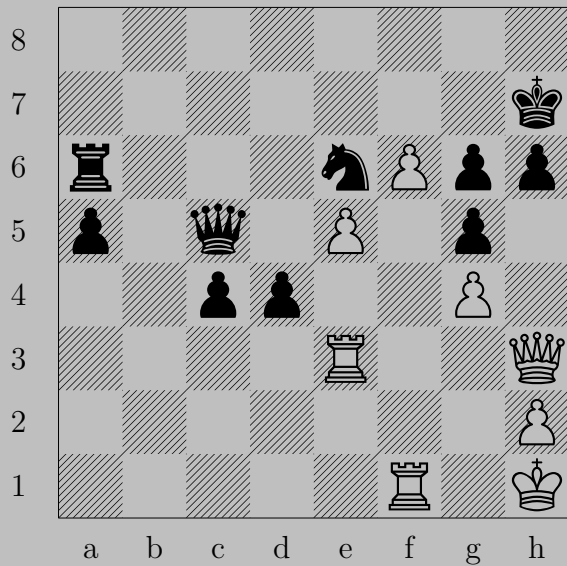


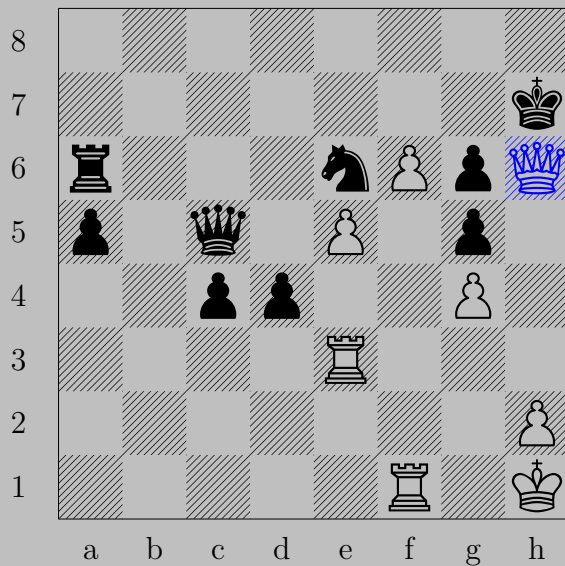
♔h7+, ♖xh7
 ♖xh7



♙×h6+, ♖×h6

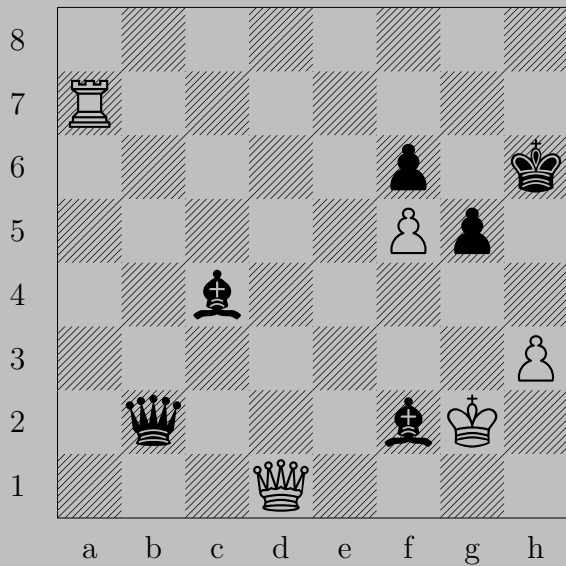
♖×h6

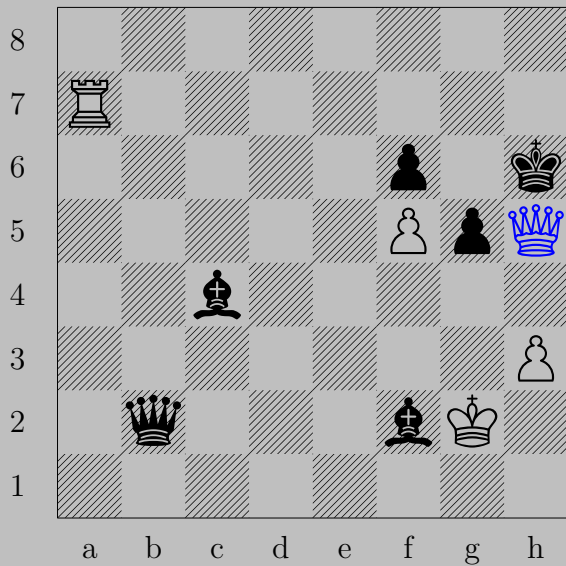




♙×h6+

If ♙×h6, ♖h3. If ♙g8, ♔f7.





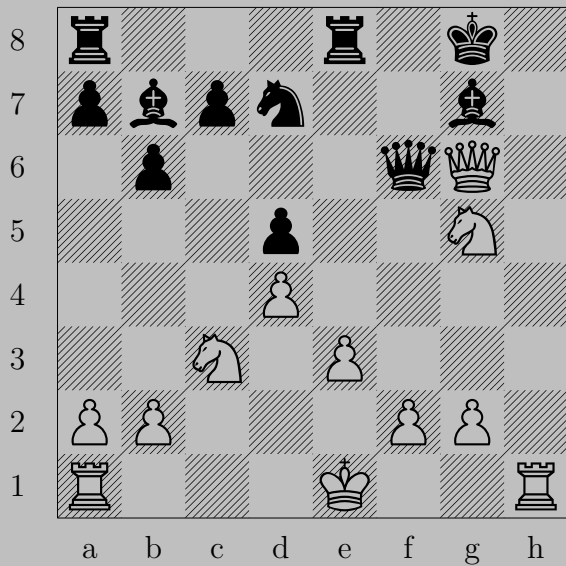
♔h5+, ♔xh5
♖h7



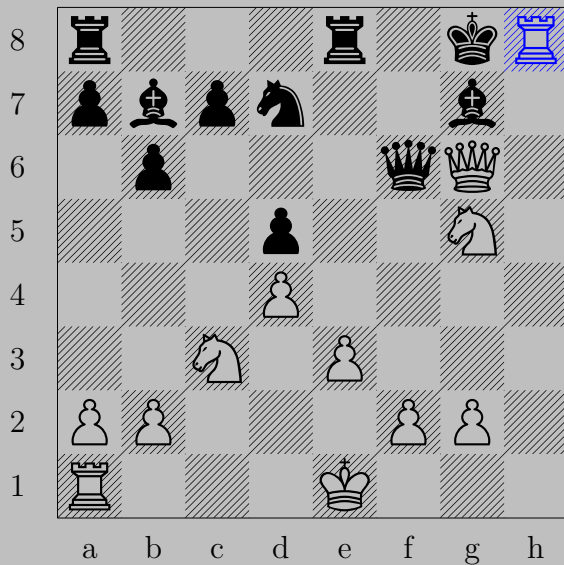
♙f5+

If ♖×f5, ♕h7. If ♖g7 or ♖h6, ♙h7.

1000



1000



Rh8+, Kh8
Kh7